



## KEY IMAGESCAN FEATURES

- Consists of a CD and a thumb drive, which are provided to each investigator during comprehensive hands-on training
- Can boot and view graphics and movies on most PCs and laptops manufactured and sold in the past 10 years
- Alters no files on the subject's computer
- Creates and saves a directory listing of pictures
- Allows the investigator to view files and copy specific files to the thumb drive to support further investigation
- Permits the investigator to write the contents of the thumb drive to CD-ROM using the ImageScan software
- Provides a forensically sound method for wiping the thumb drive between uses so it is ready for the next case
- Includes ongoing support



## CONTACT INFORMATION

E-mail: [imagescan@rcfl.gov](mailto:imagescan@rcfl.gov)

### RCFL National Program Office

ERF Building 27958-A  
Quantico, VA 22135  
Telephone: 703-985-3677  
Web site: [www.rcfl.gov](http://www.rcfl.gov)

### FBI CART Headquarters

ERF Building 27958-A  
Quantico, VA 22135  
Telephone: 703-985-3326

### Local RCFLs

Chicago RCFL  
[www.chicagorcfl.org](http://www.chicagorcfl.org)

Greater Houston RCFL  
[www.ghrcfl.org](http://www.ghrcfl.org)

Heart of America RCFL  
[www.harcrfl.org](http://www.harcrfl.org)

Intermountain West RCFL  
[www.iwrcfl.org](http://www.iwrcfl.org)

Kentucky RCFL  
[www.kentuckyrcfl.org](http://www.kentuckyrcfl.org)

Miami Valley RCFL  
[www.mvrcfl.org](http://www.mvrcfl.org)

New Jersey RCFL  
[www.njrcfl.org](http://www.njrcfl.org)

North Texas RCFL  
[www.ntrcfl.org](http://www.ntrcfl.org)

Northwest RCFL  
[www.nwrcfl.org](http://www.nwrcfl.org)

Philadelphia RCFL  
[www.phrcfl.org](http://www.phrcfl.org)

Rocky Mountain RCFL  
[www.rmrcfl.org](http://www.rmrcfl.org)

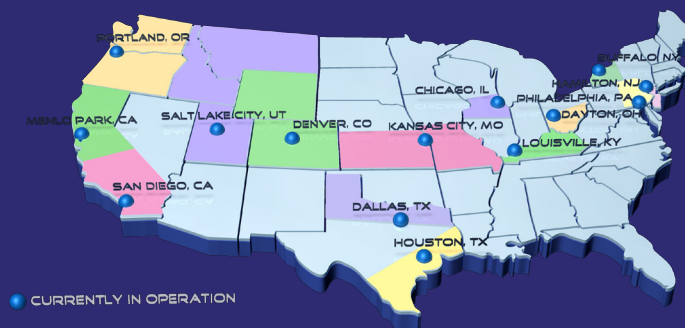
San Diego RCFL  
[www.sdrcfl.org](http://www.sdrcfl.org)

Silicon Valley RCFL  
[www.svrcfl.org](http://www.svrcfl.org)

Western New York RCFL  
[www.wnycfl.org](http://www.wnycfl.org)



ImageScan is a software tool that enables investigators to identify and isolate images on a suspect's computer and then store them on a thumb drive. This process allows officers to collect data necessary to obtain search warrants or to detain subjects pending a more comprehensive search. ImageScan is designed to support "knock and talk" situations in child exploitation cases. To date, thousands of law enforcement personnel have been trained to employ this easy-to-use software.



The ImageScan tool consists of a CD and a thumb drive.



On scene, you obtain consent from the subject to search the computer.



On scene, you insert the CD, thumb drive in the subject's computer and turn it on to review graphics and movies.



Back at the office, you can review the evidence and write the files to CD to provide to a court or store as evidence, allowing reuse of the thumb drive.

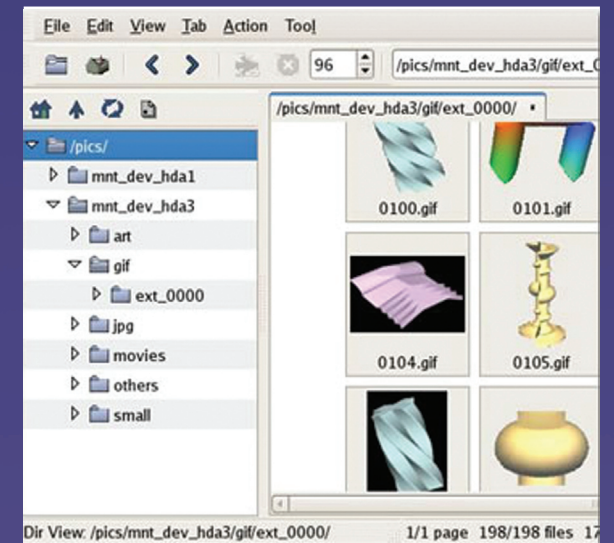


## ABOUT IMAGESCAN

ImageScan is a preview tool developed by the FBI CART Unix Program for the Innocent Images National Initiative to aid field investigators in safely viewing a variety of graphics formats on a subject's computer. ImageScan uses a customized Linux boot CD in conjunction with a mass storage USB device that allows investigators in the field to access the graphics files on a subject's computer while making absolutely no changes to any files. When this system is used for consent searches, it maintains the forensic integrity of the computer viewed for subsequent forensic examination in a laboratory environment.

ImageScan classes are open to all law enforcement personnel. Students who successfully complete the class receive an ImageScan CD and USB device free of charge.

## IMAGESCAN 3



## MEDIA PLAYER

