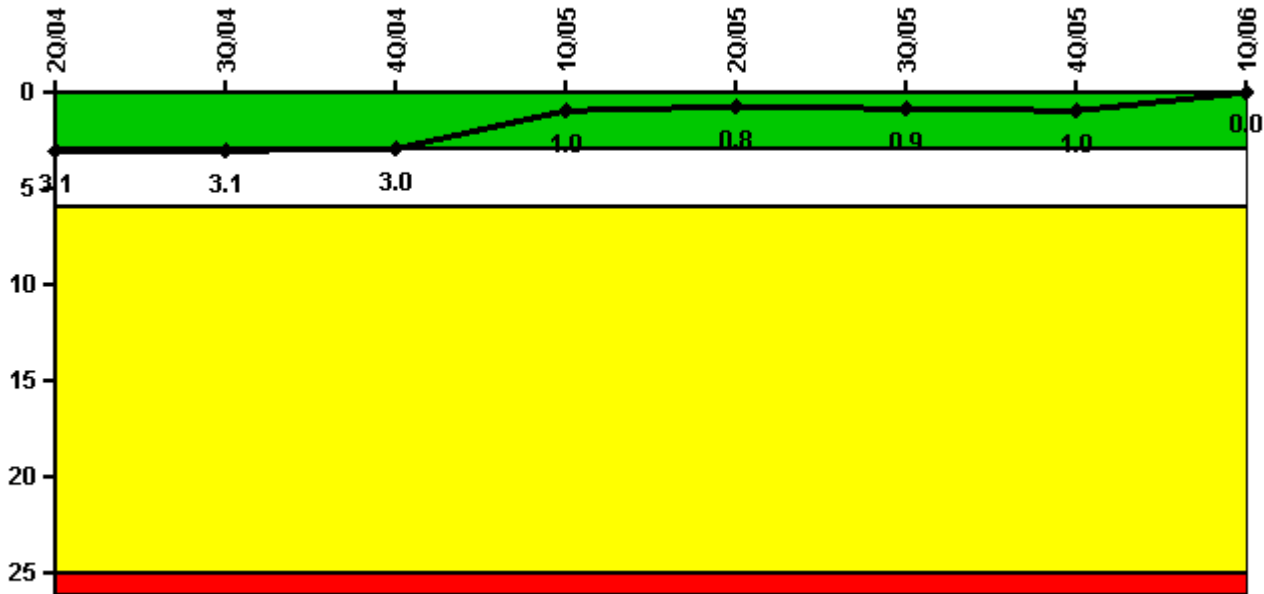


# Callaway

## 1Q/2006 Performance Indicators

Licensee's General Comments: none

### Unplanned Scrams per 7000 Critical Hrs



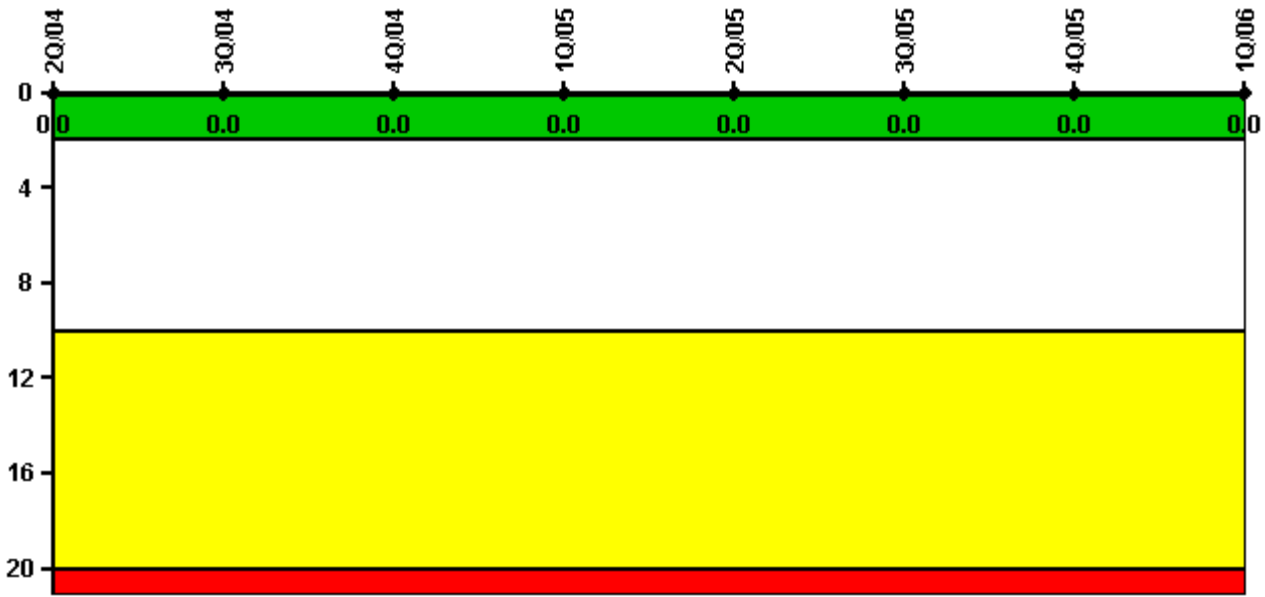
Thresholds: White > 3.0 Yellow > 6.0 Red > 25.0

### Notes

Unplanned Scrams per 7000 Critical Hrs	2Q/04	3Q/04	4Q/04	1Q/05	2Q/05	3Q/05	4Q/05	1Q/06
Unplanned scrams	0	0	0	1.0	0	0	0	0
Critical hours	670.7	2208.0	2209.0	1993.7	2125.2	1873.0	1073.5	2160.0
Indicator value	3.1	3.1	3.0	1.0	0.8	0.9	1.0	0

Licensee Comments: none

### Scrams with Loss of Normal Heat Removal



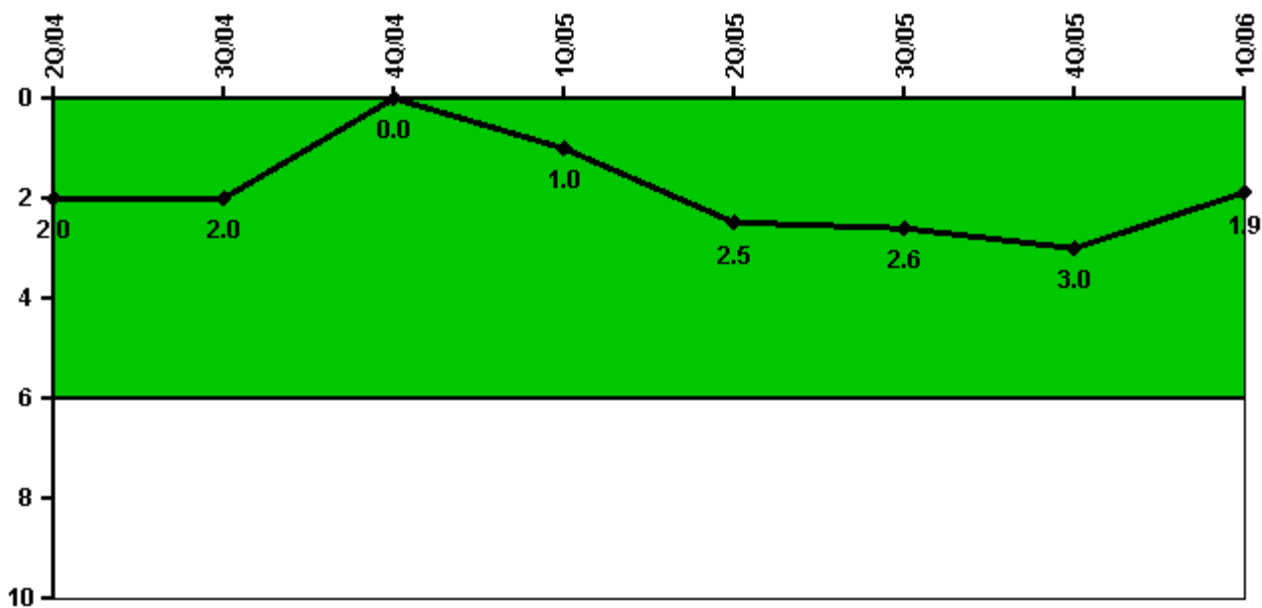
Thresholds: White > 2.0 Yellow > 10.0 Red > 20.0

#### Notes

Scrams with Loss of Normal Heat Removal	2Q/04	3Q/04	4Q/04	1Q/05	2Q/05	3Q/05	4Q/05	1Q/06
Scrams	0	0	0	0	0	0	0	0
Indicator value	0	0	0	0	0	0	0	0

Licensee Comments: none

### Unplanned Power Changes per 7000 Critical Hrs



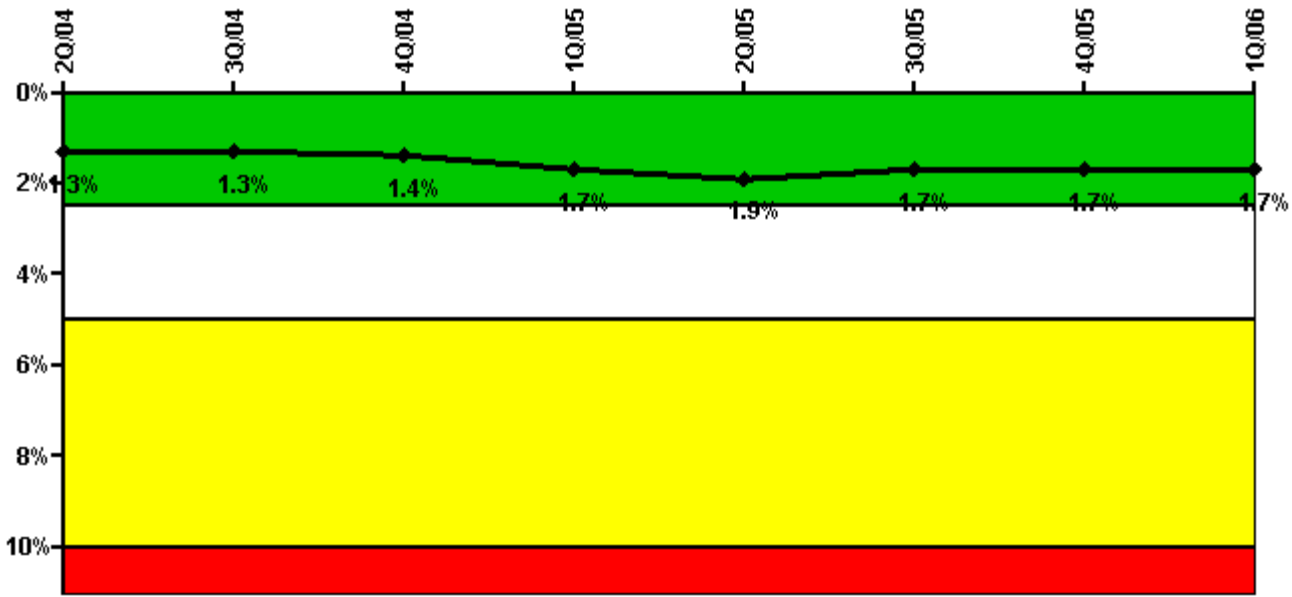
Thresholds: White > 6.0

#### Notes

Unplanned Power Changes per 7000 Critical Hrs	2Q/04	3Q/04	4Q/04	1Q/05	2Q/05	3Q/05	4Q/05	1Q/06
Unplanned power changes	0	0	0	1.0	2.0	0	0	0
Critical hours	670.7	2208.0	2209.0	1993.7	2125.2	1873.0	1073.5	2160.0
Indicator value	2.0	2.0	0	1.0	2.5	2.6	3.0	1.9

Licensee Comments: none

### Safety System Unavailability, Emergency AC Power



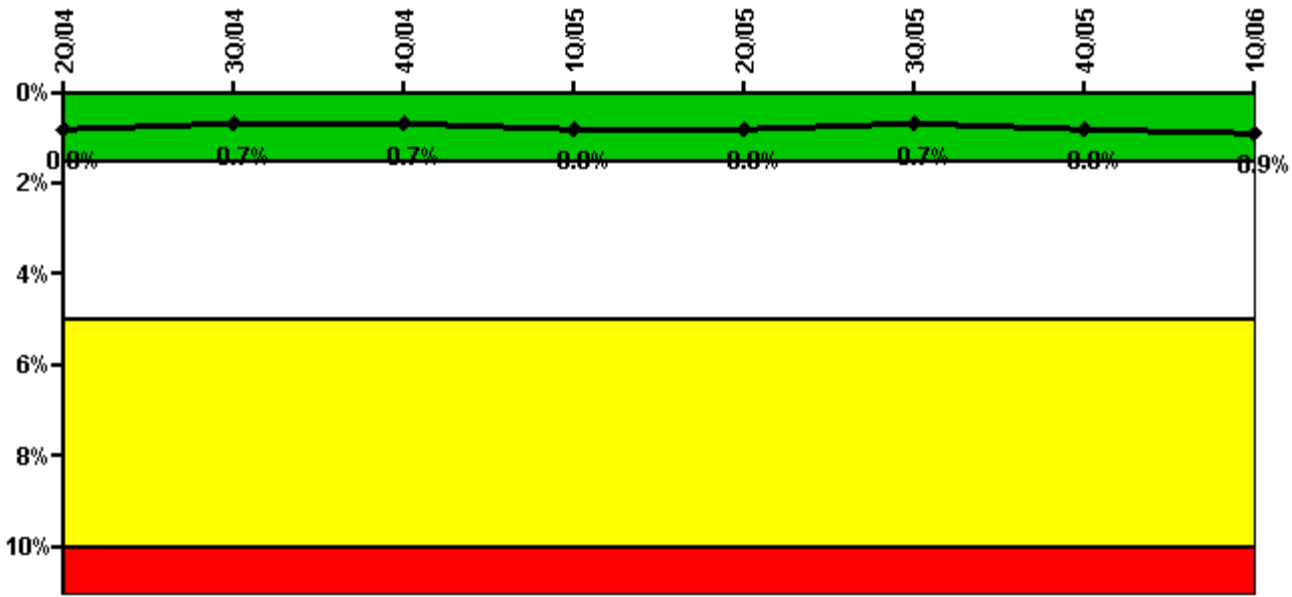
Thresholds: White > 2.5% Yellow > 5.0% Red > 10.0%

#### Notes

Safety System Unavailability, Emergency AC Power	2Q/04	3Q/04	4Q/04	1Q/05	2Q/05	3Q/05	4Q/05	1Q/06
<b>Train 1</b>								
Planned unavailable hours	3.90	51.90	19.90	69.20	1.80	2.40	0.50	4.70
Unplanned unavailable hours	0	0	0	0	5.00	0	0.80	20.30
Fault exposure hours	0	0	0	0	0	0	0	0
Effective Reset hours	0	0	0	0	0	0	0	0
Required hours	1234.35	2208.00	2209.00	2160.00	2183.00	1998.20	1327.20	2160.00
<b>Train 2</b>								
Planned unavailable hours	3.10	11.10	44.60	3.10	39.90	1.50	0.90	1.40
Unplanned unavailable hours	11.40	0	3.60	148.80	45.90	0	27.90	27.40
Fault exposure hours	0	0	0	0	0	0	0	0
Effective Reset hours	0	0	0	0	0	0	0	0
Required hours	1234.35	2208.00	2209.00	2160.00	2183.00	1998.20	1327.20	2160.00
<b>Indicator value</b>	<b>1.3%</b>	<b>1.3%</b>	<b>1.4%</b>	<b>1.7%</b>	<b>1.9%</b>	<b>1.7%</b>	<b>1.7%</b>	<b>1.7%</b>

Licensee Comments: none

### Safety System Unavailability, High Pressure Injection System (HPSI)



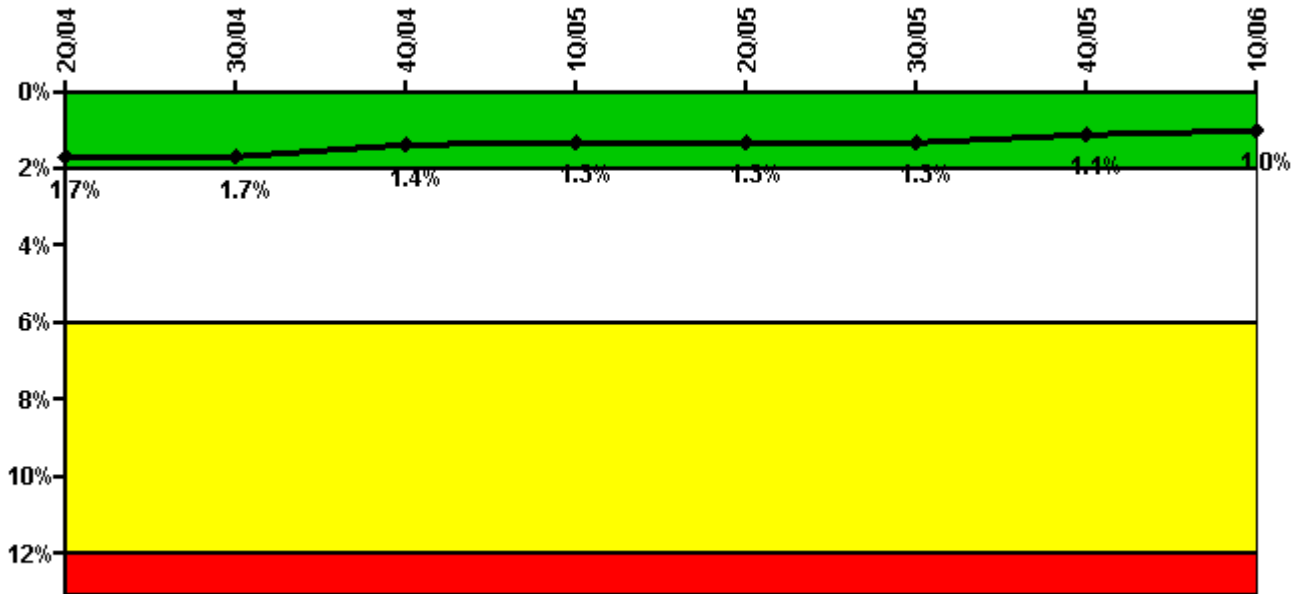
Thresholds: White > 1.5% Yellow > 5.0% Red > 10.0%

Notes

Safety System Unavailability, High Pressure Injection System (HPSI)	2Q/04	3Q/04	4Q/04	1Q/05	2Q/05	3Q/05	4Q/05	1Q/06
<b>Train 1</b>								
Planned unavailable hours	1.00	17.90	24.60	2.60	3.80	11.80	1.60	33.20
Unplanned unavailable hours	5.30	0	0	0	0	0	0	20.30
Fault exposure hours	0	0	0	0	0	0	0	0
Effective Reset hours	0	0	0	0	0	0	0	0
Required hours	764.25	2208.00	2209.00	2160.00	2183.00	1888.00	1147.10	2160.00
<b>Train 2</b>								
Planned unavailable hours	6.80	1.30	27.40	2.00	1.20	2.70	1.20	31.80
Unplanned unavailable hours	0	0	8.90	0	0	0	23.40	15.70
Fault exposure hours	0	0	0	0	0	0	0	0
Effective Reset hours	0	0	0	0	0	0	0	0
Required hours	764.25	2208.00	2209.00	2160.00	2183.00	1888.00	1147.10	2160.00
<b>Train 3</b>								
Planned unavailable hours	1.00	1.20	2.00	44.00	2.50	11.60	1.20	18.80
Unplanned unavailable hours	5.30	0	0	3.50	0	0	0	20.30
Fault exposure hours	0	0	0	0	0	0	0	0
Effective Reset hours	0	0	0	0	0	0	0	0
Required hours	737.70	2208.00	2209.00	2160.00	2183.00	1888.00	1147.10	2160.00
<b>Train 4</b>								
Planned unavailable hours	0.20	0.90	15.60	25.90	0.80	13.80	0.60	7.90
Unplanned unavailable hours	0	0	8.90	41.80	0	0	23.40	15.70
Fault exposure hours	0	0	0	0	0	0	0	0
Effective Reset hours	0	0	0	0	0	0	0	0
Required hours	737.70	2208.00	2209.00	2160.00	2183.00	1888.00	1147.10	2160.00
<b>Indicator value</b>	<b>0.8%</b>	<b>0.7%</b>	<b>0.7%</b>	<b>0.8%</b>	<b>0.8%</b>	<b>0.7%</b>	<b>0.8%</b>	<b>0.9%</b>

Licensee Comments: none

### Safety System Unavailability, Heat Removal System (AFW)



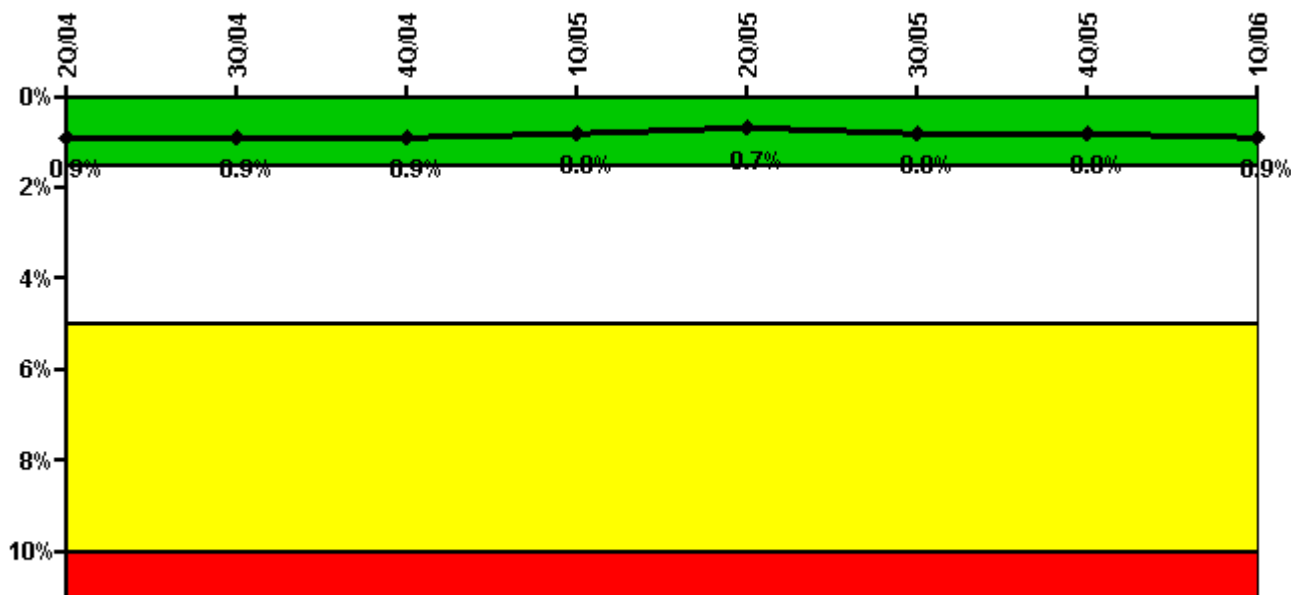
Thresholds: White > 2.0% Yellow > 6.0% Red > 12.0%

### Notes

Safety System Unavailability, Heat Removal System (AFW)	2Q/04	3Q/04	4Q/04	1Q/05	2Q/05	3Q/05	4Q/05	1Q/06
<b>Train 1</b>								
Planned unavailable hours	0	0.10	30.10	1.60	2.30	3.20	2.40	33.60
Unplanned unavailable hours	0	0	1.30	0	0	0	0	20.30
Fault exposure hours	0	0	0	0	0	0	0	0
Effective Reset hours	0	0	0	0	0	0	0	0
Required hours	737.70	2208.00	2209.00	2160.00	2183.00	1883.90	1134.80	2160.00
<b>Train 2</b>								
Planned unavailable hours	0	21.20	2.20	1.30	2.10	17.90	1.10	4.20
Unplanned unavailable hours	0	0	0	0	0	0	23.40	15.70
Fault exposure hours	0	0	0	0	0	0	0	0
Effective Reset hours	0	0	0	0	0	0	0	0
Required hours	737.70	2208.00	2209.00	2160.00	2183.00	1883.90	1134.80	2160.00
<b>Train 3</b>								
Planned unavailable hours	2.80	2.70	3.60	9.10	43.70	1.40	4.10	5.20
Unplanned unavailable hours	0	53.70	39.90	0	0	4.90	0	0
Fault exposure hours	0	0	0	0	0	0	0	0
Effective Reset hours	0	0	0	0	0	0	0	0
Required hours	737.70	2208.00	2209.00	2160.00	2183.00	1883.90	1134.80	2160.00
<b>Indicator value</b>	<b>1.7%</b>	<b>1.7%</b>	<b>1.4%</b>	<b>1.3%</b>	<b>1.3%</b>	<b>1.3%</b>	<b>1.1%</b>	<b>1.0%</b>

Licensee Comments: none

### Safety System Unavailability, Residual Heat Removal System



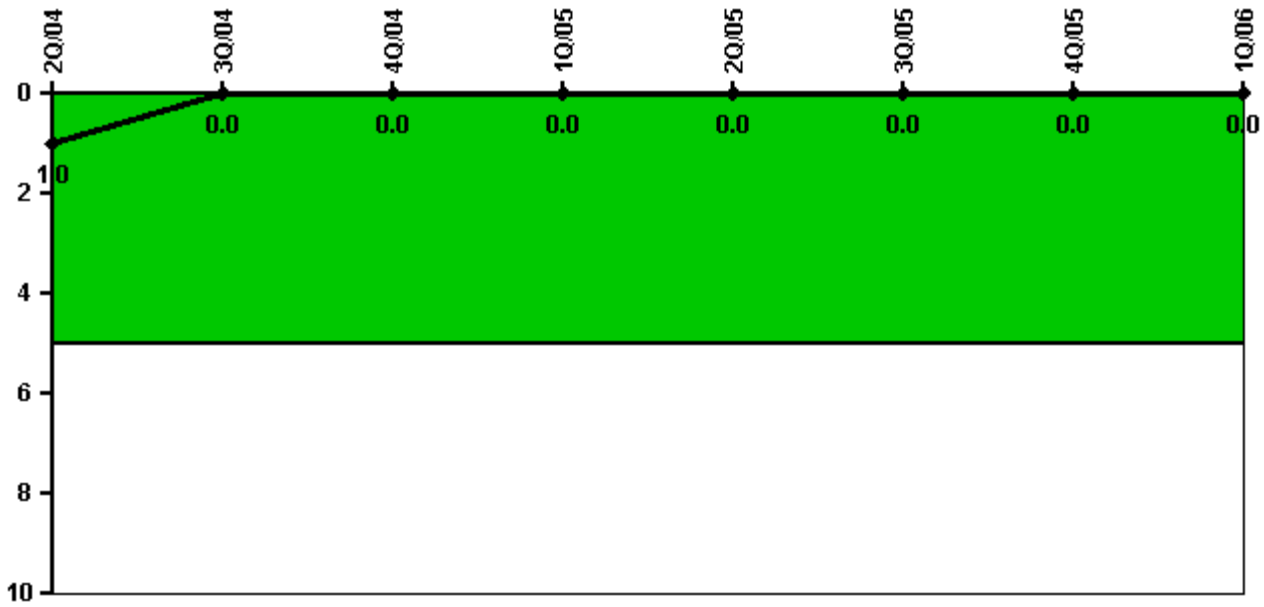
Thresholds: White > 1.5% Yellow > 5.0% Red > 10.0%

#### Notes

Safety System Unavailability, Residual Heat Removal System	2Q/04	3Q/04	4Q/04	1Q/05	2Q/05	3Q/05	4Q/05	1Q/06
<b>Train 1</b>								
Planned unavailable hours	8.40	1.30	2.10	2.30	2.50	39.50	1.30	18.90
Unplanned unavailable hours	5.30	0	0	0	0	3.00	0	20.30
Fault exposure hours	0	0	0	0	0	0	0	0
Effective Reset hours	0	0	0	0	0	0	0	0
Required hours	1171.70	2208.00	2209.00	2160.00	2183.00	1888.00	1313.90	2160.00
<b>Train 2</b>								
Planned unavailable hours	0.30	26.50	15.70	1.50	0.90	2.20	0.70	8.00
Unplanned unavailable hours	26.70	0	8.90	0	0	0	23.40	15.70
Fault exposure hours	0	0	0	0	0	0	0	0
Effective Reset hours	0	0	0	0	0	0	0	0
Required hours	1171.70	2208.00	2209.00	2160.00	2183.00	1888.00	1313.90	2160.00
<b>Indicator value</b>	<b>0.9%</b>	<b>0.9%</b>	<b>0.9%</b>	<b>0.8%</b>	<b>0.7%</b>	<b>0.8%</b>	<b>0.8%</b>	<b>0.9%</b>

Licensee Comments: none

### Safety System Functional Failures (PWR)



Thresholds: White > 5.0

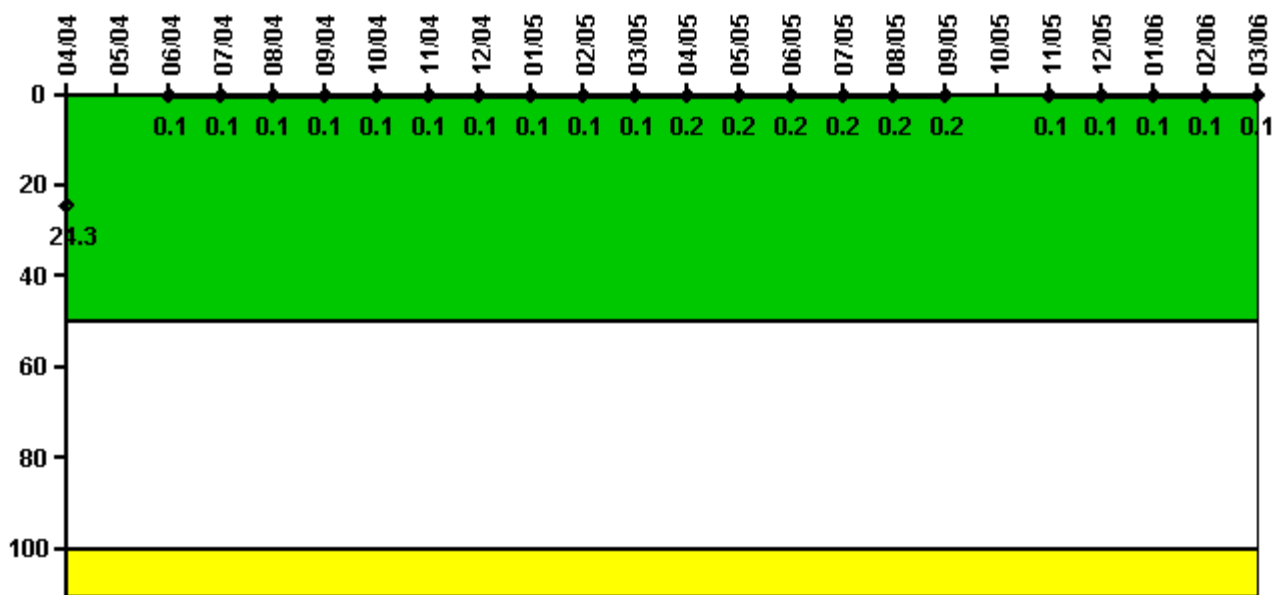
#### Notes

Safety System Functional Failures (PWR)	2Q/04	3Q/04	4Q/04	1Q/05	2Q/05	3Q/05	4Q/05	1Q/06
Safety System Functional Failures	0	0	0	0	0	0	0	0
Indicator value	1	0	0	0	0	0	0	0

Licensee Comments: none



### Reactor Coolant System Activity



Thresholds: White > 50.0 Yellow > 100.0

#### Notes

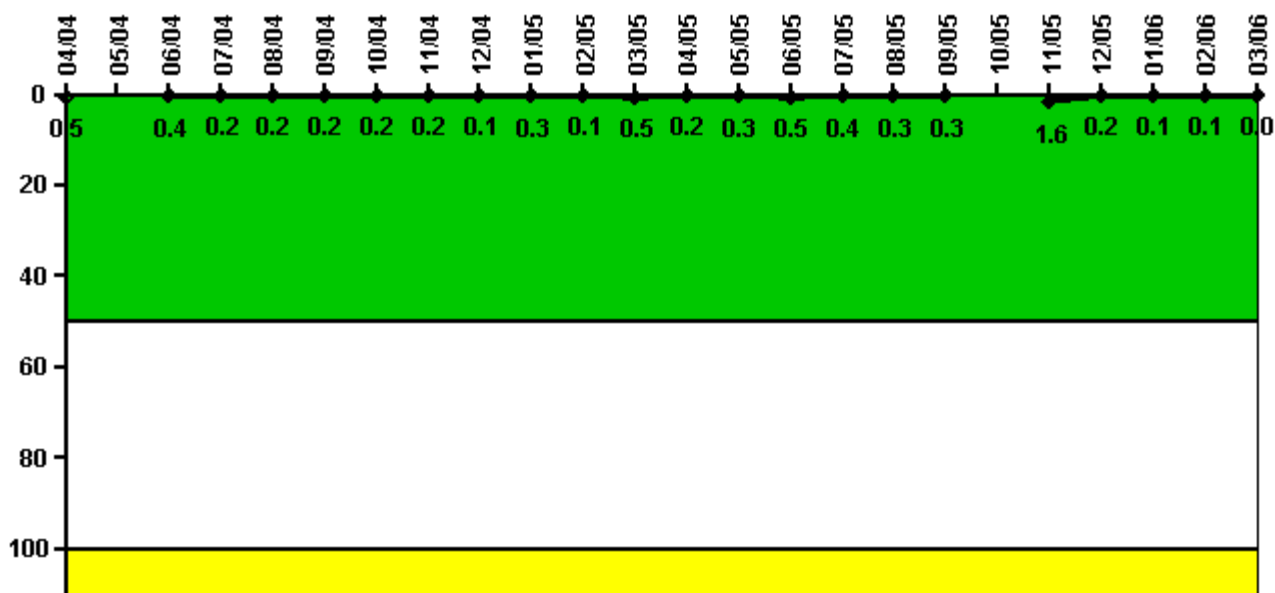
Reactor Coolant System Activity	4/04	5/04	6/04	7/04	8/04	9/04	10/04	11/04	12/04	1/05	2/05	3/05
Maximum activity	0.073000	N/A	0.000690	0.000750	0.000884	0.001087	0.001150	0.001170	0.001220	0.001470	0.001410	0.001410
Technical specification limit	0.3	1.0	1.0	1.0	1.0	1.0	1.0	1.0	1.0	1.0	1.0	1.0
Indicator value	24.3	N/A	0.1	0.1	0.1	0.1	0.1	0.1	0.1	0.1	0.1	0.1

Reactor Coolant System Activity	4/05	5/05	6/05	7/05	8/05	9/05	10/05	11/05	12/05	1/06	2/06	3/06
Maximum activity	0.001540	0.001640	0.001630	0.001620	0.001660	0.001710	N/A	0.000540	0.000544	0.000581	0.000548	0.000550
Technical specification limit	1.0	1.0	1.0	1.0	1.0	1.0	1.0	1.0	1.0	1.0	1.0	1.0
Indicator value	0.2	0.2	0.2	0.2	0.2	0.2	N/A	0.1	0.1	0.1	0.1	0.1

Licensee Comments: none

### Reactor Coolant System Leakage



Thresholds: White > 50.0 Yellow > 100.0

#### Notes

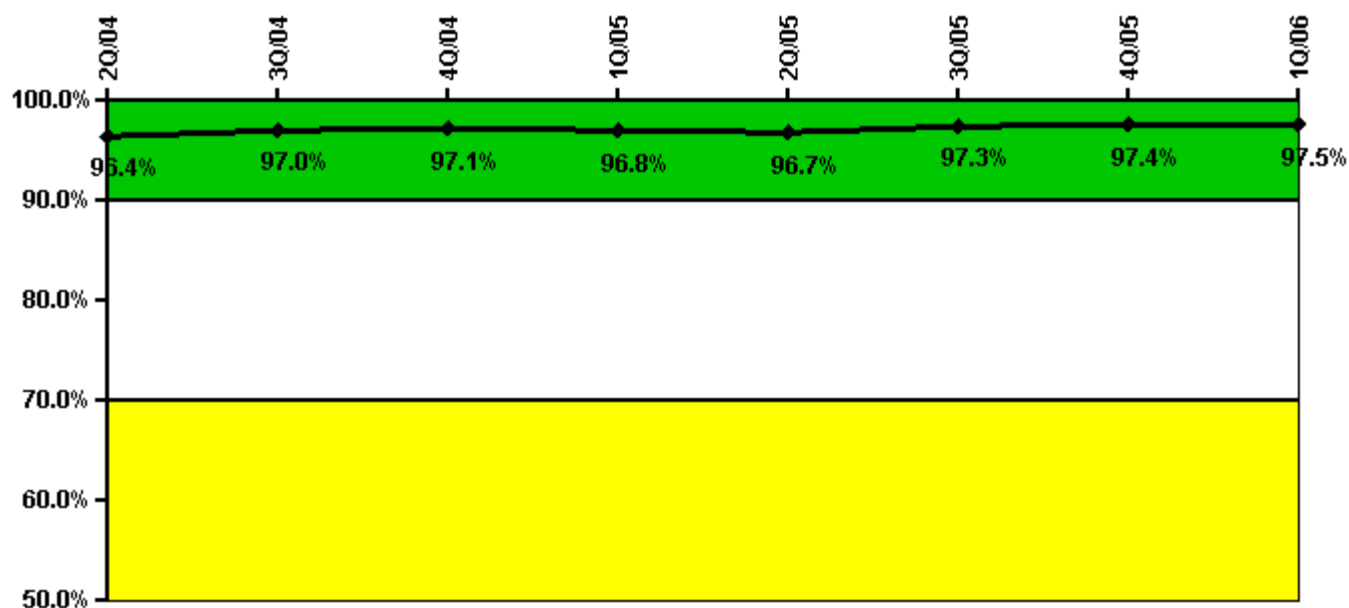
Reactor Coolant System Leakage	4/04	5/04	6/04	7/04	8/04	9/04	10/04	11/04	12/04	1/05	2/05	3/05
Maximum leakage	0.047	N/A	0.040	0.018	0.020	0.018	0.024	0.015	0.006	0.026	0.012	0.049
Technical specification limit	10.0	10.0	10.0	10.0	10.0	10.0	10.0	10.0	10.0	10.0	10.0	10.0
Indicator value	0.5	N/A	0.4	0.2	0.2	0.2	0.2	0.2	0.1	0.3	0.1	0.5

Reactor Coolant System Leakage	4/05	5/05	6/05	7/05	8/05	9/05	10/05	11/05	12/05	1/06	2/06	3/06
Maximum leakage	0.016	0.031	0.051	0.038	0.030	0.030	N/A	0.156	0.023	0.013	0.007	0.003
Technical specification limit	10.0	10.0	10.0	10.0	10.0	10.0	10.0	10.0	10.0	10.0	10.0	10.0
Indicator value	0.2	0.3	0.5	0.4	0.3	0.3	N/A	1.6	0.2	0.1	0.1	0

Licensee Comments: none

### Drill/Exercise Performance



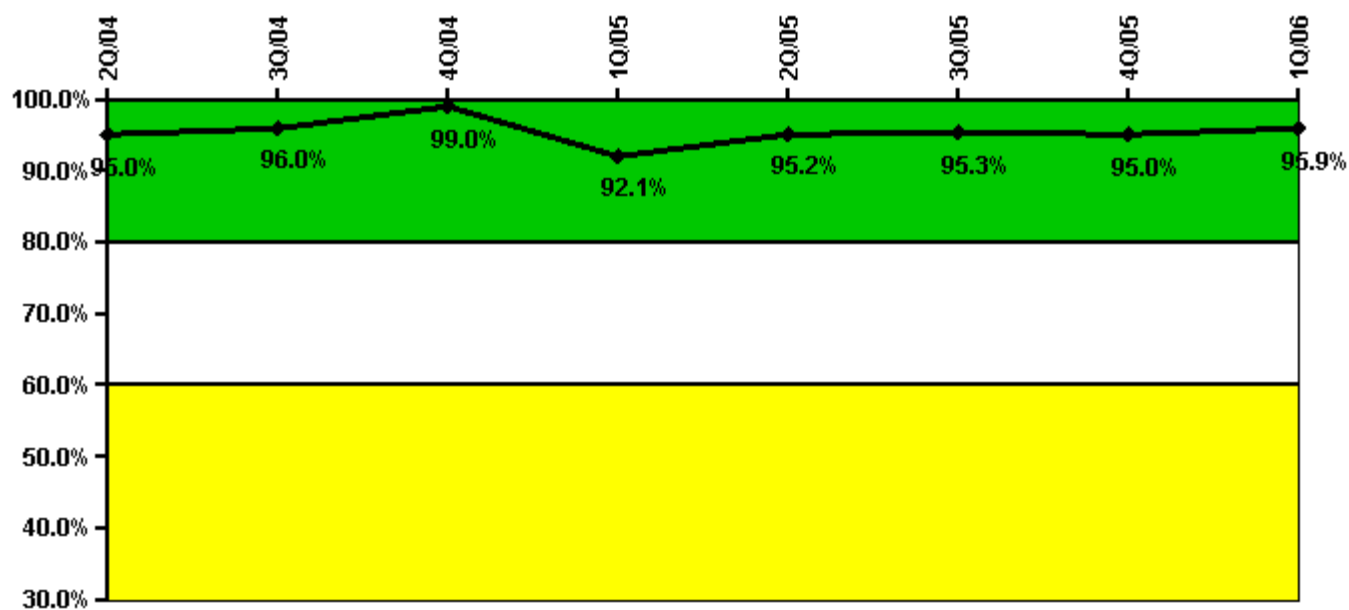
Thresholds: White < 90.0% Yellow < 70.0%

#### Notes

Drill/Exercise Performance	2Q/04	3Q/04	4Q/04	1Q/05	2Q/05	3Q/05	4Q/05	1Q/06
Successful opportunities	0	30.0	43.0	36.0	33.0	14.0	0	36.0
Total opportunities	0	31.0	44.0	38.0	34.0	14.0	0	36.0
Indicator value	96.4%	97.0%	97.1%	96.8%	96.7%	97.3%	97.4%	97.5%

Licensee Comments: none

### ERO Drill Participation



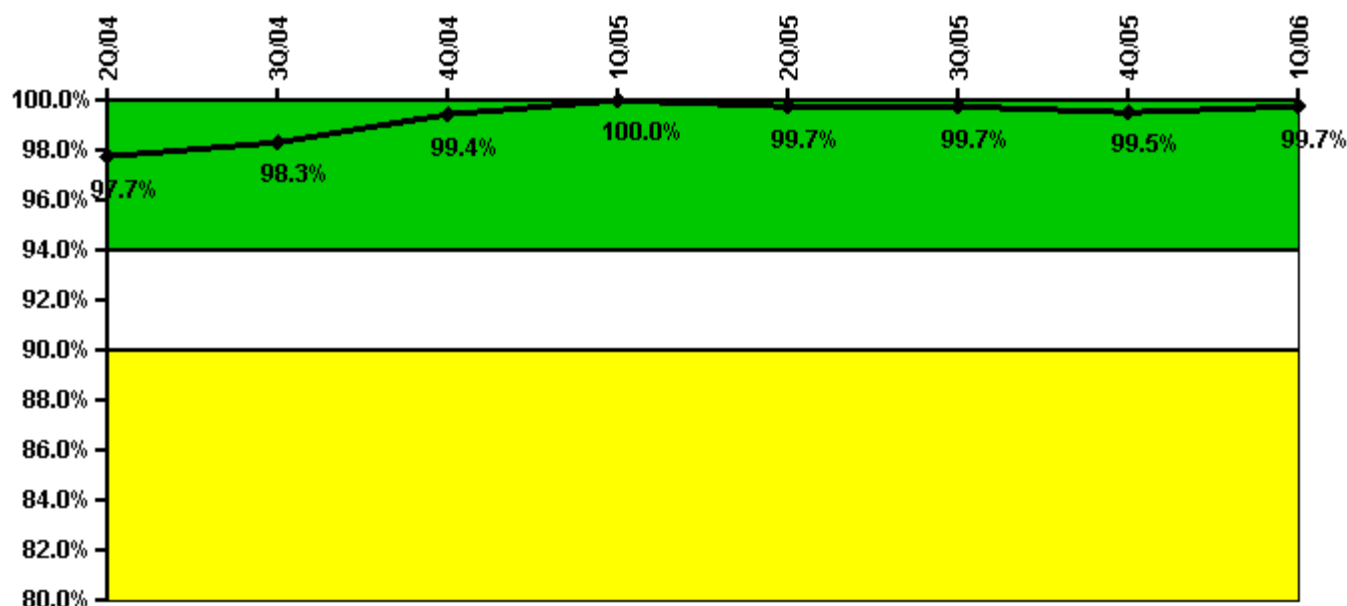
Thresholds: White < 80.0% Yellow < 60.0%

#### Notes

ERO Drill Participation	2Q/04	3Q/04	4Q/04	1Q/05	2Q/05	3Q/05	4Q/05	1Q/06
Participating Key personnel	95.0	96.0	96.0	93.0	100.0	101.0	95.0	94.0
Total Key personnel	100.0	100.0	97.0	101.0	105.0	106.0	100.0	98.0
Indicator value	95.0%	96.0%	99.0%	92.1%	95.2%	95.3%	95.0%	95.9%

Licensee Comments: none

### Alert & Notification System



Thresholds: White < 94.0% Yellow < 90.0%

#### Notes

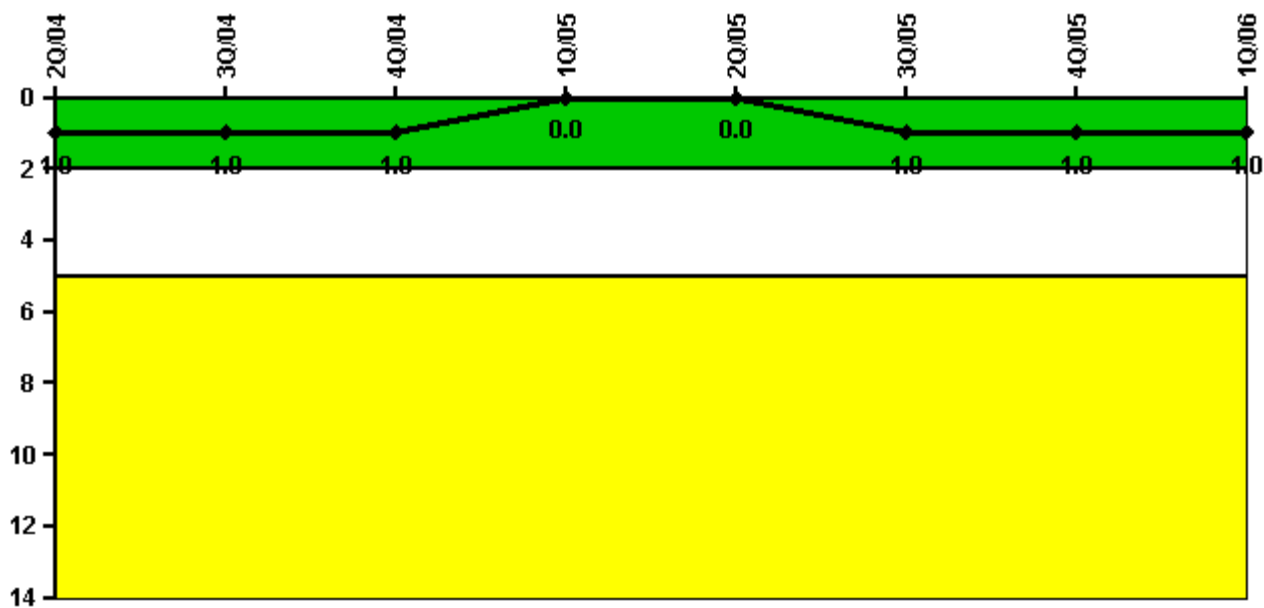
Alert & Notification System	2Q/04	3Q/04	4Q/04	1Q/05	2Q/05	3Q/05	4Q/05	1Q/06
Successful siren-tests	87	87	87	87	86	87	375	377
Total sirens-tests	87	87	87	87	87	87	377	377
Indicator value	97.7%	98.3%	99.4%	100.0%	99.7%	99.7%	99.5%	99.7%

#### Licensee Comments:

4Q/05: A self-assessment activity completed in the second quarter 2006 identified a siren failure not properly identified and reported in the fourth quarter 2005. Siren data for the fourth quarter 2005 is corrected from 376 to 375 successful siren-tests. This change did not result in crossing a threshold or changing the color of the indicator. Callaway Plant implemented a revised ANS testing methodology effective for the fourth quarter 2005. The new methodology includes quiet weekly functional tests in addition to the original monthly sounding tests.

2Q/05: A self-assessment activity completed in the second quarter 2006 identified a siren failure not properly identified and reported in the second quarter 2005. Siren data for the second quarter 2005 is corrected from 87 to 86 successful siren-tests. This change did not result in crossing a threshold or changing the color of the indicator.

### Occupational Exposure Control Effectiveness



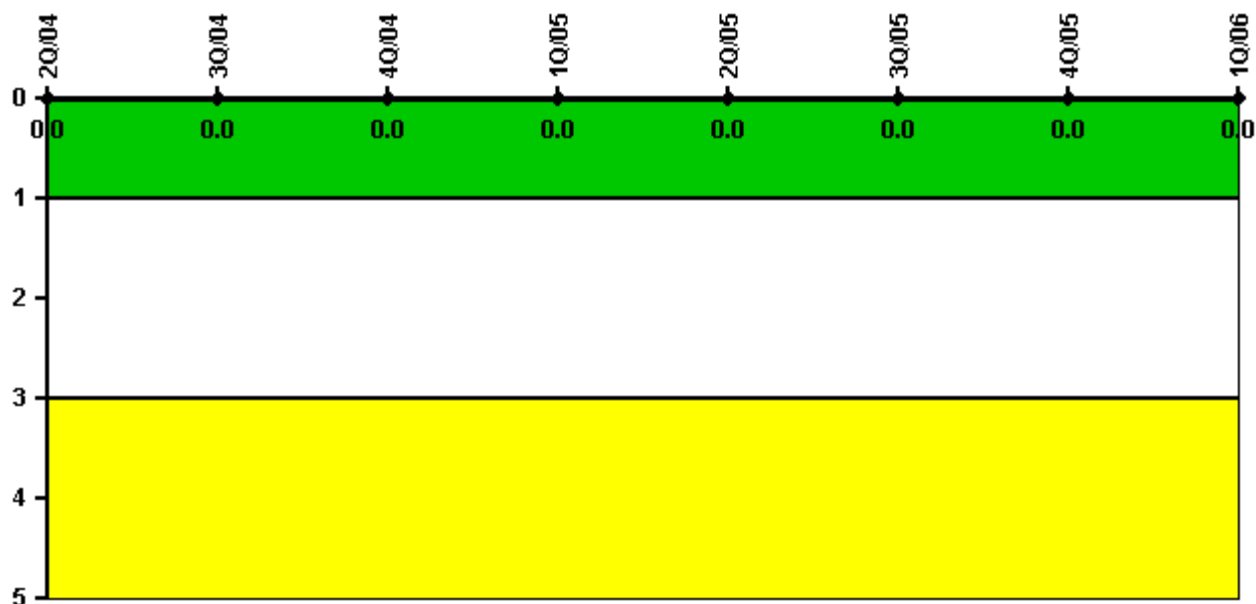
Thresholds: White > 2.0 Yellow > 5.0

#### Notes

Occupational Exposure Control Effectiveness	2Q/04	3Q/04	4Q/04	1Q/05	2Q/05	3Q/05	4Q/05	1Q/06
High radiation area occurrences	0	0	0	0	0	1	0	0
Very high radiation area occurrences	0	0	0	0	0	0	0	0
Unintended exposure occurrences	0	0	0	0	0	0	0	0
<b>Indicator value</b>	<b>1</b>	<b>1</b>	<b>1</b>	<b>0</b>	<b>0</b>	<b>1</b>	<b>1</b>	<b>1</b>

Licensee Comments: none

### RETS/ODCM Radiological Effluent



Thresholds: White > 1.0 Yellow > 3.0

#### Notes

RETS/ODCM Radiological Effluent	2Q/04	3Q/04	4Q/04	1Q/05	2Q/05	3Q/05	4Q/05	1Q/06
RETS/ODCM occurrences	0	0	0	0	0	0	0	0
Indicator value	0	0	0	0	0	0	0	0

Licensee Comments: none

[Physical Protection](#) information not publicly available.

▲ [Action Matrix Summary](#) | [Inspection Findings Summary](#) | [PI Summary](#) | [Reactor Oversight Process](#)

Last Modified: May 5, 2006