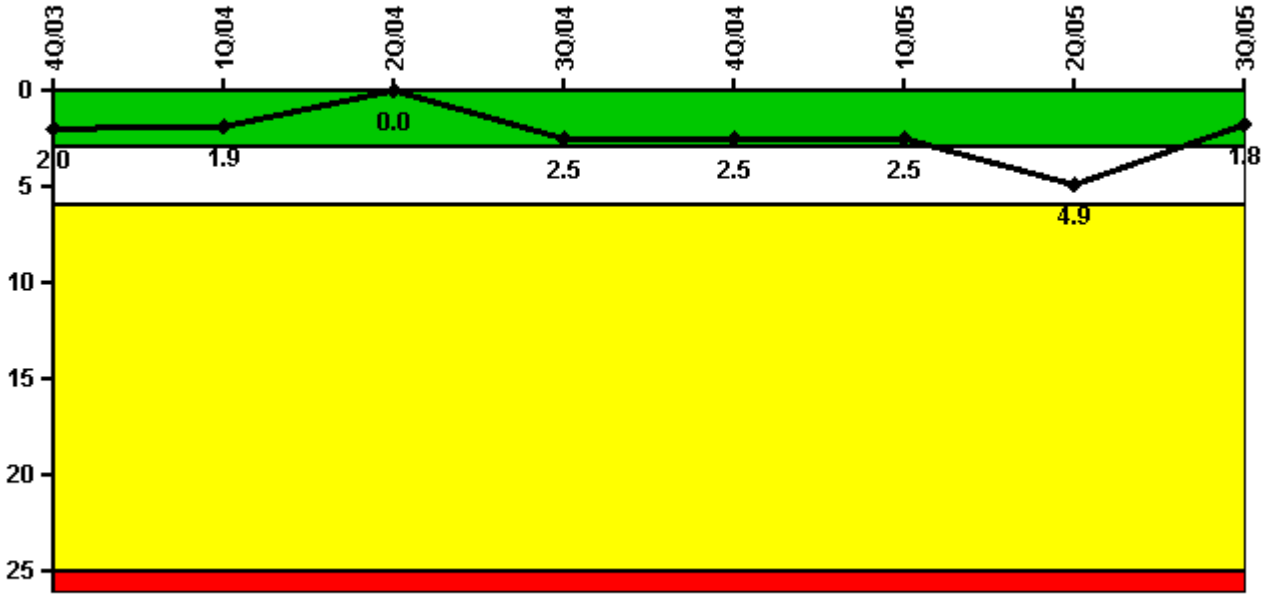


# Columbia Generating Station

## 3Q/2005 Performance Indicators

Licensee's General Comments: none

### Unplanned Scrams per 7000 Critical Hrs



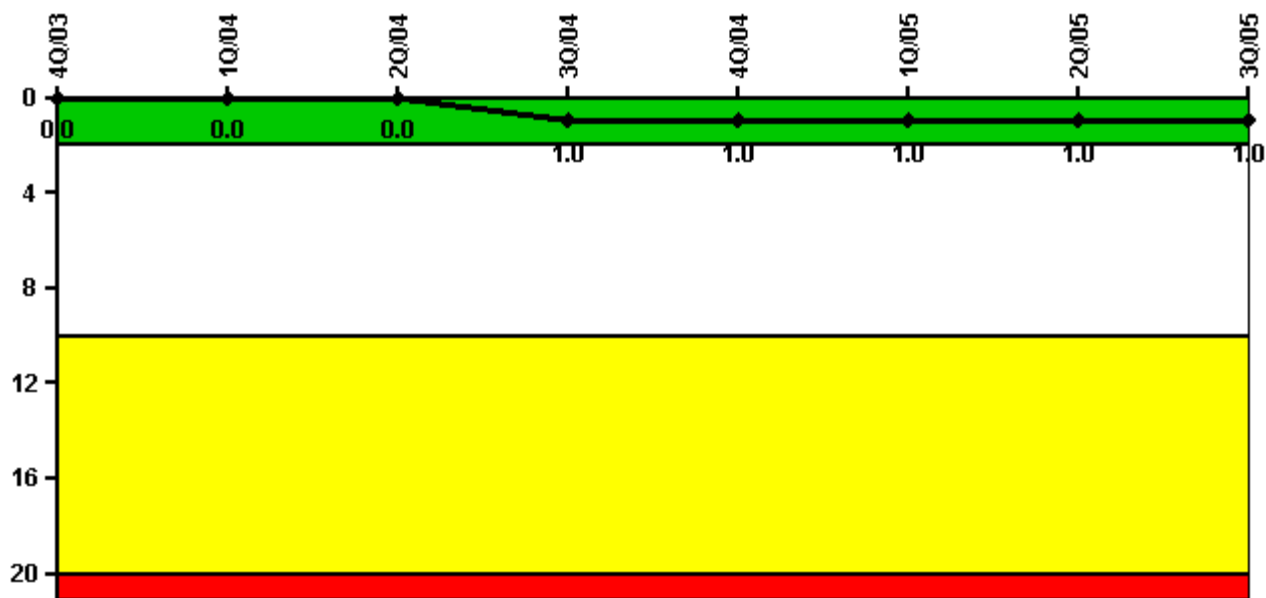
**Thresholds: White > 3.0 Yellow > 6.0 Red > 25.0**

### Notes

Unplanned Scrams per 7000 Critical Hrs	4Q/03	1Q/04	2Q/04	3Q/04	4Q/04	1Q/05	2Q/05	3Q/05
Unplanned scrams	0	0	0	3.0	0	0	2.0	0
Critical hours	2209.0	2184.0	2183.0	1733.0	2209.0	2160.0	1073.4	2208.0
Indicator value	2.0	1.9	0	2.5	2.5	2.5	4.9	1.8

Licensee Comments: none

### Scrams with Loss of Normal Heat Removal



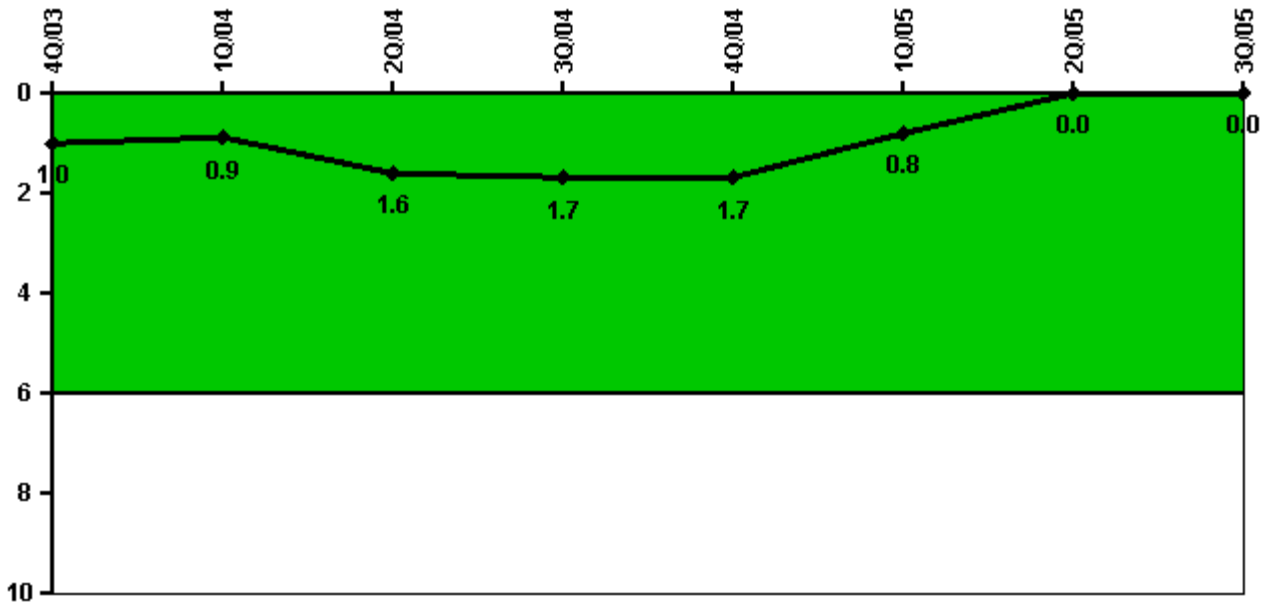
Thresholds: White > 2.0 Yellow > 10.0 Red > 20.0

#### Notes

Scrams with Loss of Normal Heat Removal	4Q/03	1Q/04	2Q/04	3Q/04	4Q/04	1Q/05	2Q/05	3Q/05
Scrams	0	0	0	1.0	0	0	0	0
Indicator value	0	0	0	1.0	1.0	1.0	1.0	1.0

Licensee Comments: none

### Unplanned Power Changes per 7000 Critical Hrs



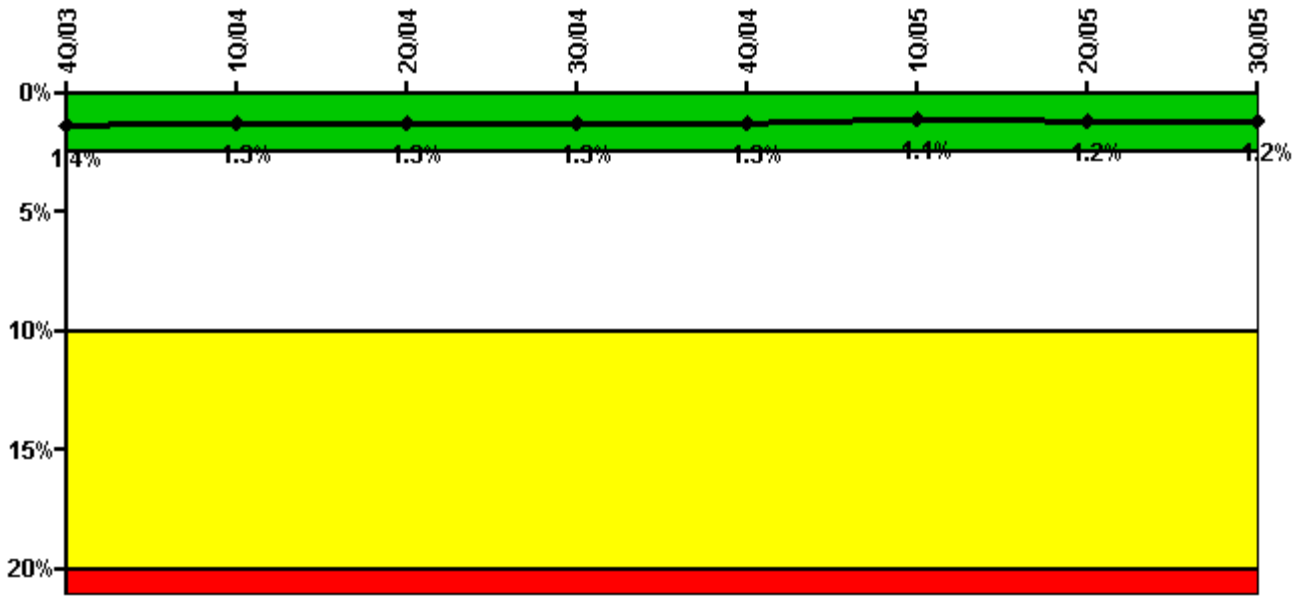
Thresholds: White > 6.0

#### Notes

Unplanned Power Changes per 7000 Critical Hrs	4Q/03	1Q/04	2Q/04	3Q/04	4Q/04	1Q/05	2Q/05	3Q/05
Unplanned power changes	0	1.0	1.0	0	0	0	0	0
Critical hours	2209.0	2184.0	2183.0	1733.0	2209.0	2160.0	1073.4	2208.0
Indicator value	1.0	0.9	1.6	1.7	1.7	0.8	0	0

Licensee Comments: none

### Safety System Unavailability, Emergency AC Power, >2EDG



Thresholds: White > 2.5% Yellow > 10.0% Red > 20.0%

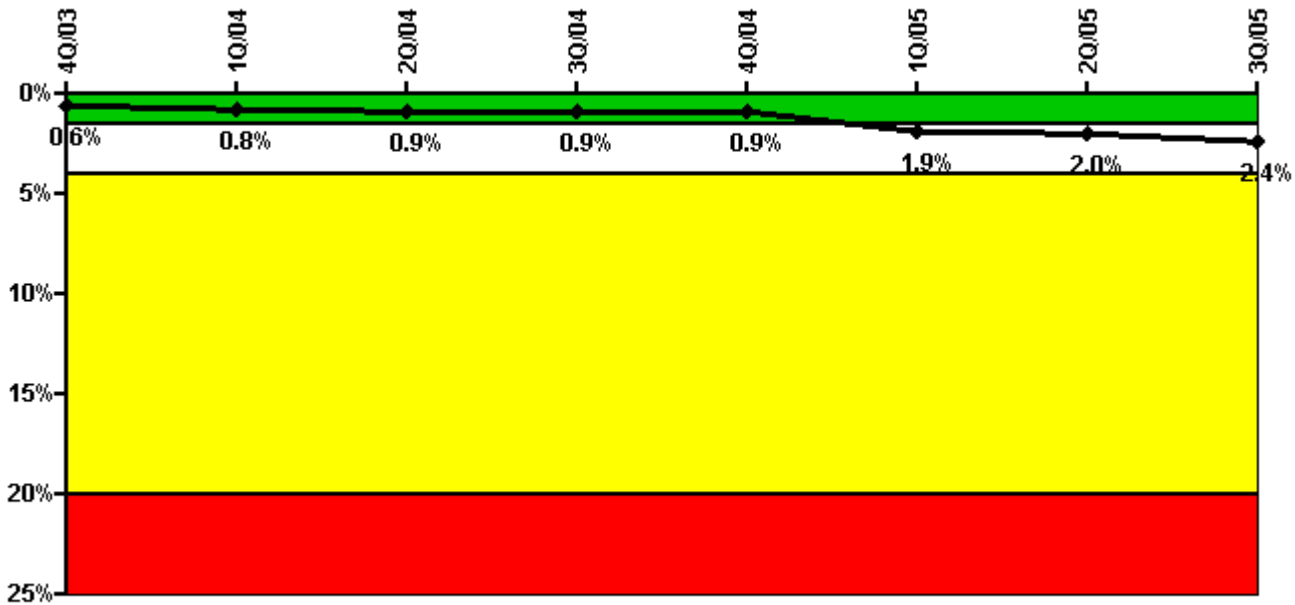
#### Notes

Safety System Unavailability, Emergency AC Power, >2EDG	4Q/03	1Q/04	2Q/04	3Q/04	4Q/04	1Q/05	2Q/05	3Q/05
<b>Train 1</b>								
Planned unavailable hours	40.07	1.42	17.96	1.20	8.48	1.48	8.26	30.39
Unplanned unavailable hours	0	0	0	0	0	0	27.47	0
Fault exposure hours	0	0	0	0	0	0	0	0
Effective Reset hours	0	0	0	0	0	0	0	0
Required hours	2209.00	2184.00	2183.00	2208.00	2209.00	2160.00	2183.00	2208.00
<b>Train 2</b>								
Planned unavailable hours	6.22	2.66	7.62	1.47	1.47	10.23	9.92	24.78
Unplanned unavailable hours	0	0	0	0	0	0	0	8.82
Fault exposure hours	0	0	0	0	0	0	0	0
Effective Reset hours	0	0	0	0	0	0	0	0
Required hours	2209.00	2184.00	2183.00	2208.00	2209.00	2160.00	2183.00	2208.00
<b>Train 3</b>								
Planned unavailable hours	9.13	4.23	3.07	9.06	10.88	6.94	0.93	2.93
Unplanned unavailable hours	0	0	0	0	0	0	0	0
Fault exposure hours	0	0	0	0	0	0	0	0
Effective Reset hours	0	0	0	0	0	0	0	0
Required hours	2209.00	2184.00	2183.00	2208.00	2209.00	2160.00	2183.00	2208.00
<b>Indicator value</b>	<b>1.4%</b>	<b>1.3%</b>	<b>1.3%</b>	<b>1.3%</b>	<b>1.3%</b>	<b>1.1%</b>	<b>1.2%</b>	<b>1.2%</b>

#### Licensee Comments:

3Q/05: Train 1 unplanned hours for 2Q05 are due to maintenance on associated service water pump. An engineering evaluation for determining availability prior to maintenance is complete. Service water pump was determined to be available so no fault exposure hours will be reported or commented.

### Safety System Unavailability, High Pressure Injection System (HPCS)



Thresholds: White > 1.5% Yellow > 4.0% Red > 20.0%

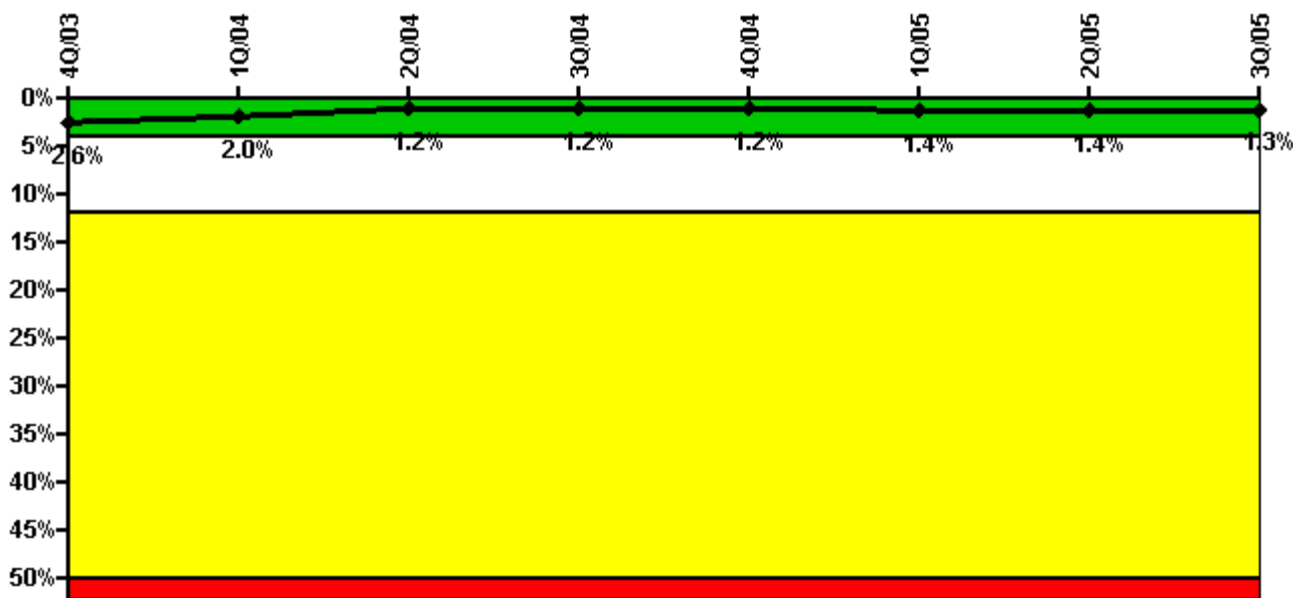
#### Notes

Safety System Unavailability, High Pressure Injection System (HPCS)	4Q/03	1Q/04	2Q/04	3Q/04	4Q/04	1Q/05	2Q/05	3Q/05
<b>Train 1</b>								
Planned unavailable hours	12.89	49.24	5.62	0.52	1.90	265.37	0	102.75
Unplanned unavailable hours	0	0.10	16.88	0	0	0	0	0
Fault exposure hours	0	0	0	0	0	0	0	0
Effective Reset hours	0	0	0	0	0	0	0	0
Required hours	2209.00	2184.00	2183.00	1876.06	2209.00	2160.00	1164.02	2208.00
<b>Indicator value</b>	<b>0.6%</b>	<b>0.8%</b>	<b>0.9%</b>	<b>0.9%</b>	<b>0.9%</b>	<b>1.9%</b>	<b>2.0%</b>	<b>2.4%</b>

Licensee Comments:

3Q/05: Exceeded GREEN/WHITE threshold due to ~ 11 days of maintenance on HPCS motor following discovery of equipment issues in 1Q05. Engineering evaluation of fault exposure hours associated with 1Q05 planned hours is complete. It has been determined that the pump remained available until removed from service for maintenance. No fault exposure hours will be reported or commented.

### Safety System Unavailability, Heat Removal System (RCIC)



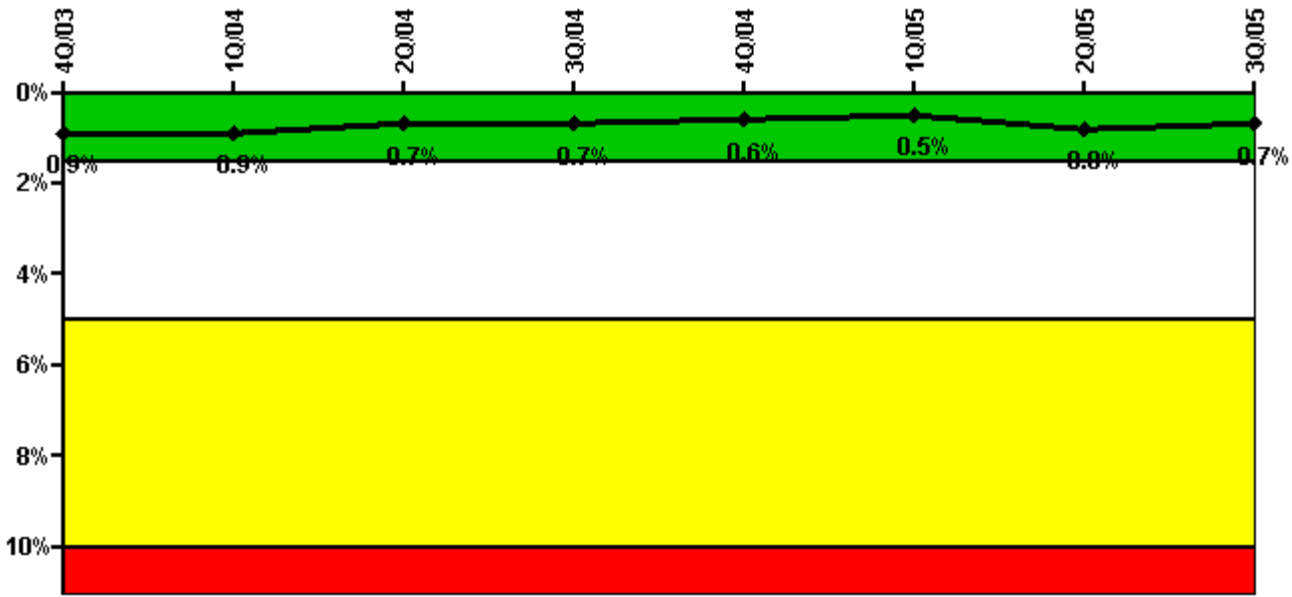
Thresholds: White > 4.0% Yellow > 12.0% Red > 50.0%

#### Notes

Safety System Unavailability, Heat Removal System (RCIC)	4Q/03	1Q/04	2Q/04	3Q/04	4Q/04	1Q/05	2Q/05	3Q/05
<b>Train 1</b>								
Planned unavailable hours	13.39	16.81	3.72	20.34	5.43	57.99	2.40	9.96
Unplanned unavailable hours	0	12.80	0	0	2.05	0	1.60	0
Fault exposure hours	0	0	0	0	0	0	0	0
Effective Reset hours	0	0	0	0	0	0	0	0
Required hours	2209.00	2184.00	2183.00	1750.51	2209.00	2160.00	1070.21	2200.13
<b>Indicator value</b>	<b>2.6%</b>	<b>2.0%</b>	<b>1.2%</b>	<b>1.2%</b>	<b>1.2%</b>	<b>1.4%</b>	<b>1.4%</b>	<b>1.3%</b>

Licensee Comments: none

### Safety System Unavailability, Residual Heat Removal System



Thresholds: White > 1.5% Yellow > 5.0% Red > 10.0%

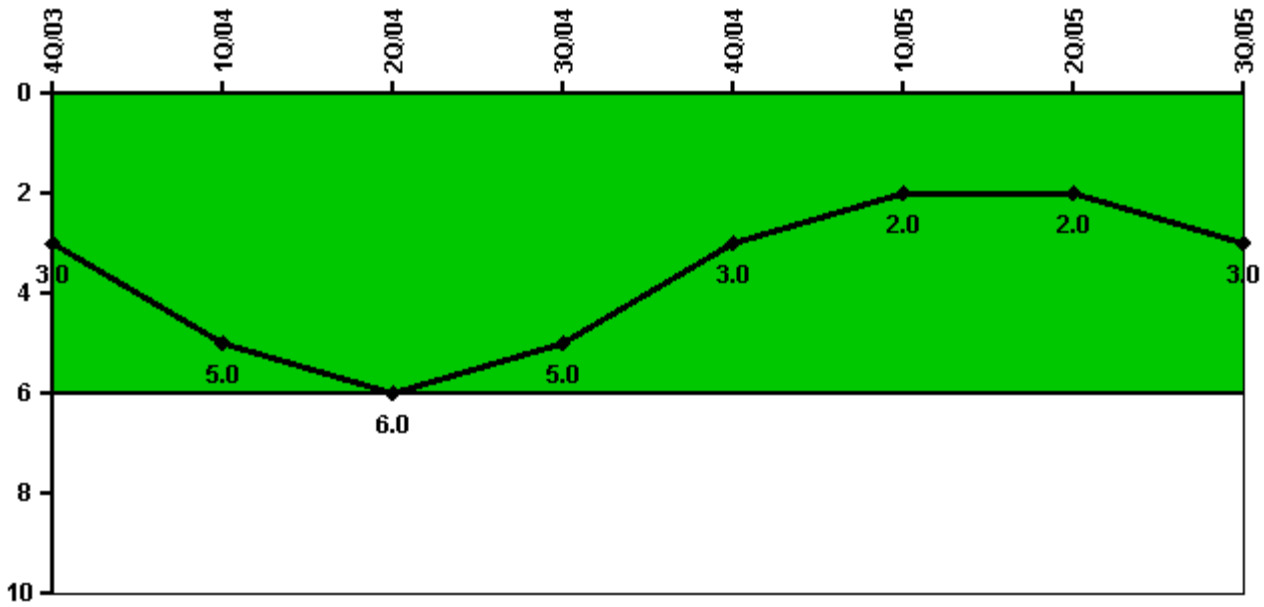
**Notes**

Safety System Unavailability, Residual Heat Removal System	4Q/03	1Q/04	2Q/04	3Q/04	4Q/04	1Q/05	2Q/05	3Q/05
<b>Train 1</b>								
Planned unavailable hours	0.69	1.23	0.37	0.30	8.18	0.70	39.27	0
Unplanned unavailable hours	0	0	0	0	0	0	109.71	0
Fault exposure hours	0	0	0	0	0	0	0	0
Effective Reset hours	0	0	0	0	0	0	0	0
Required hours	2209.00	2184.00	2183.00	2208.00	2209.00	2160.00	2183.00	2208.00
<b>Train 2</b>								
Planned unavailable hours	0.28	1.95	0.23	6.78	0.25	12.10	23.15	6.15
Unplanned unavailable hours	0	0	0	0	0	0	0	0.65
Fault exposure hours	0	0	0	0	0	0	0	0
Effective Reset hours	0	0	0	0	0	0	0	0
Required hours	2209.00	2184.00	2183.00	2208.00	2209.00	2160.00	2183.00	2208.00
<b>Indicator value</b>	<b>0.9%</b>	<b>0.9%</b>	<b>0.7%</b>	<b>0.7%</b>	<b>0.6%</b>	<b>0.5%</b>	<b>0.8%</b>	<b>0.7%</b>

Licensee Comments:

3Q/05: Train 1 unplanned hours for 2Q05 are due to maintenance on associated service water pump. An engineering evaluation for determining availability prior to maintenance is complete. Service water pump was determined to be available so no fault exposure hours will be reported or commented.

### Safety System Functional Failures (BWR)



Thresholds: White > 6.0

#### Notes

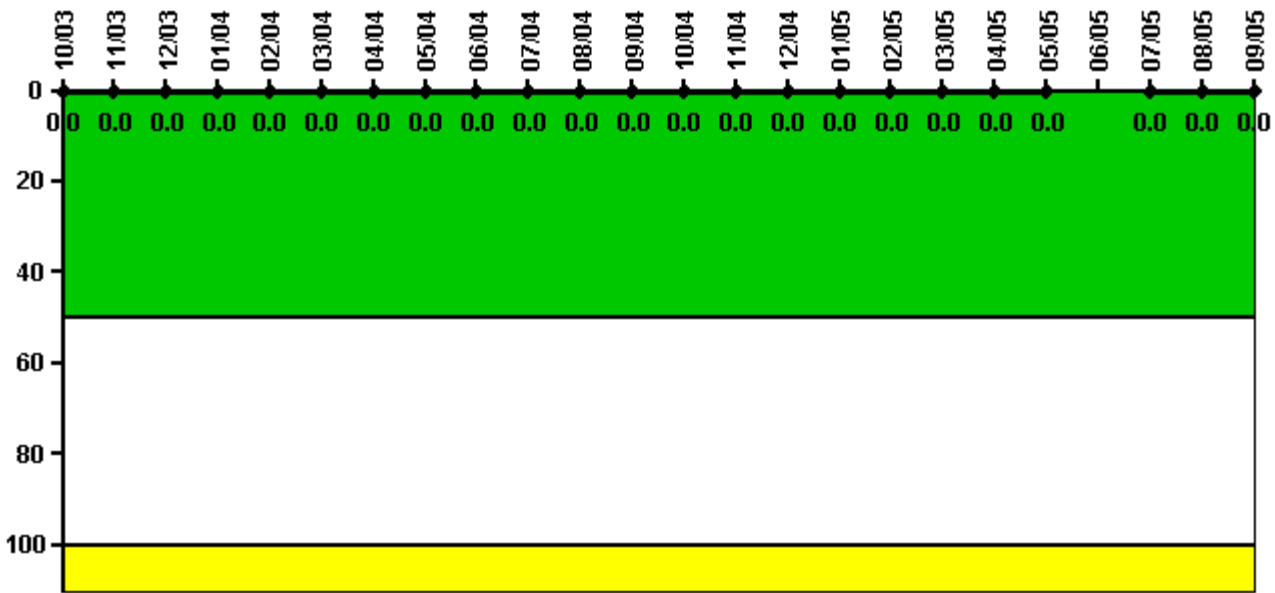
Safety System Functional Failures (BWR)	4Q/03	1Q/04	2Q/04	3Q/04	4Q/04	1Q/05	2Q/05	3Q/05
Safety System Functional Failures	2	2	1	0	0	1	1	1
Indicator value	3	5	6	5	3	2	2	3

Licensee Comments:

3Q/05: LER 2005-004-00 documents RCIC trip during system start attempt due to design problem.



### Reactor Coolant System Activity



Thresholds: White > 50.0 Yellow > 100.0

#### Notes

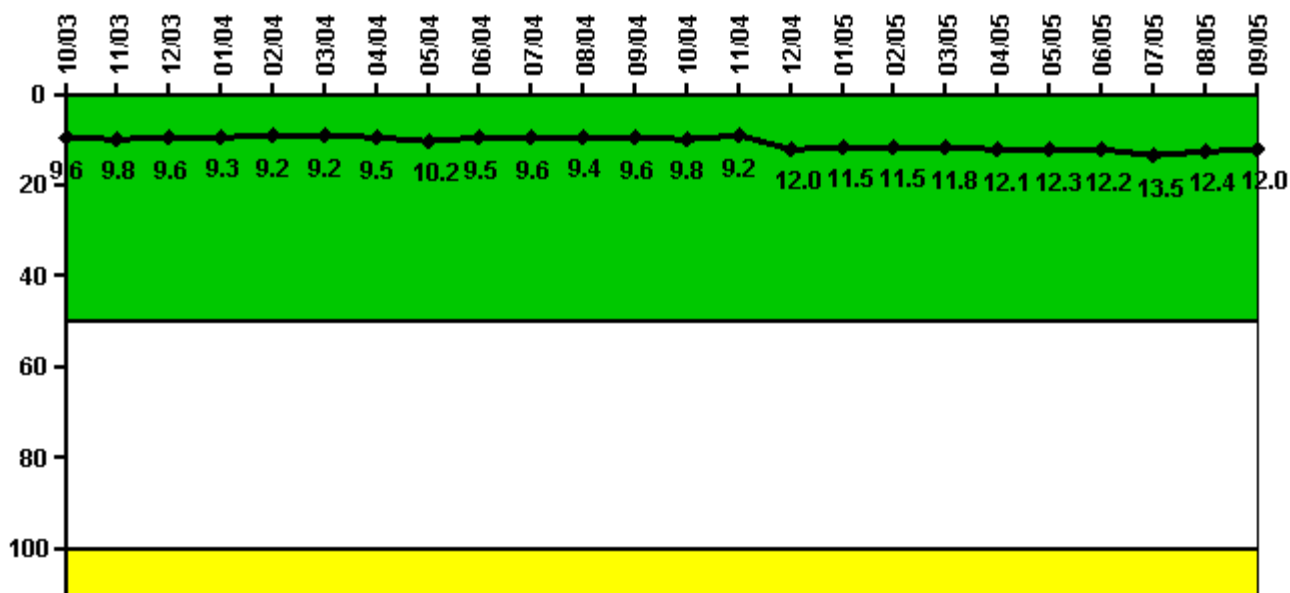
Reactor Coolant System Activity	10/03	11/03	12/03	1/04	2/04	3/04	4/04	5/04	6/04	7/04	8/04	9/04
Maximum activity	0.000006	0.000005	0.000008	0.000005	0.000005	0.000005	0.000005	0.000005	0.000006	0.000006	0.000004	0.000005
Technical specification limit	0.2	0.2	0.2	0.2	0.2	0.2	0.2	0.2	0.2	0.2	0.2	0.2
Indicator value	0	0	0	0	0	0	0	0	0	0	0	0

Reactor Coolant System Activity	10/04	11/04	12/04	1/05	2/05	3/05	4/05	5/05	6/05	7/05	8/05	9/05
Maximum activity	0.000006	0.000007	0.000008	0.000007	0.000006	0.000015	0.000011	0.000010	N/A	0.000005	0.000004	0.000003
Technical specification limit	0.2	0.2	0.2	0.2	0.2	0.2	0.2	0.2	0.2	0.2	0.2	0.2
Indicator value	0	0	0	0	0	0	0	0	N/A	0	0	0

Licensee Comments: none

### Reactor Coolant System Leakage



Thresholds: White > 50.0 Yellow > 100.0

#### Notes

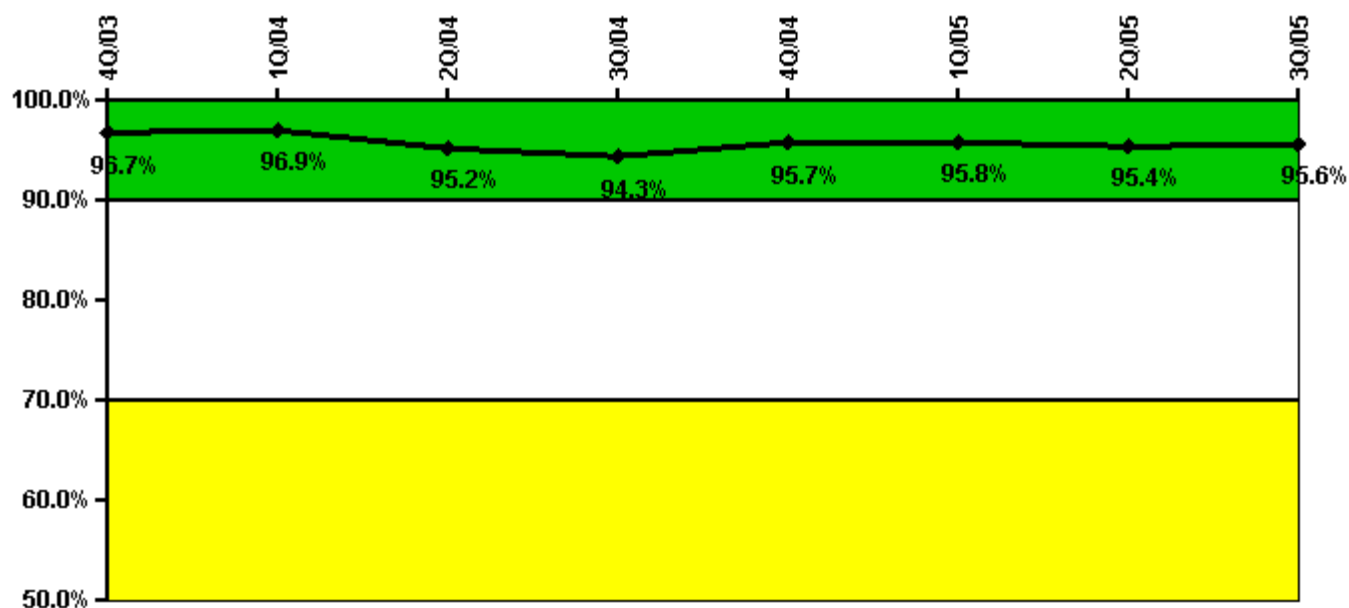
Reactor Coolant System Leakage	10/03	11/03	12/03	1/04	2/04	3/04	4/04	5/04	6/04	7/04	8/04	9/04
Maximum leakage	2.390	2.450	2.410	2.330	2.310	2.290	2.370	2.550	2.380	2.390	2.340	2.390
Technical specification limit	25.0	25.0	25.0	25.0	25.0	25.0	25.0	25.0	25.0	25.0	25.0	25.0
Indicator value	9.6	9.8	9.6	9.3	9.2	9.2	9.5	10.2	9.5	9.6	9.4	9.6

Reactor Coolant System Leakage	10/04	11/04	12/04	1/05	2/05	3/05	4/05	5/05	6/05	7/05	8/05	9/05
Maximum leakage	2.440	2.300	2.990	2.880	2.880	2.960	3.030	3.070	3.040	3.370	3.100	3.000
Technical specification limit	25.0	25.0	25.0	25.0	25.0	25.0	25.0	25.0	25.0	25.0	25.0	25.0
Indicator value	9.8	9.2	12.0	11.5	11.5	11.8	12.1	12.3	12.2	13.5	12.4	12.0

Licensee Comments: none

### Drill/Exercise Performance



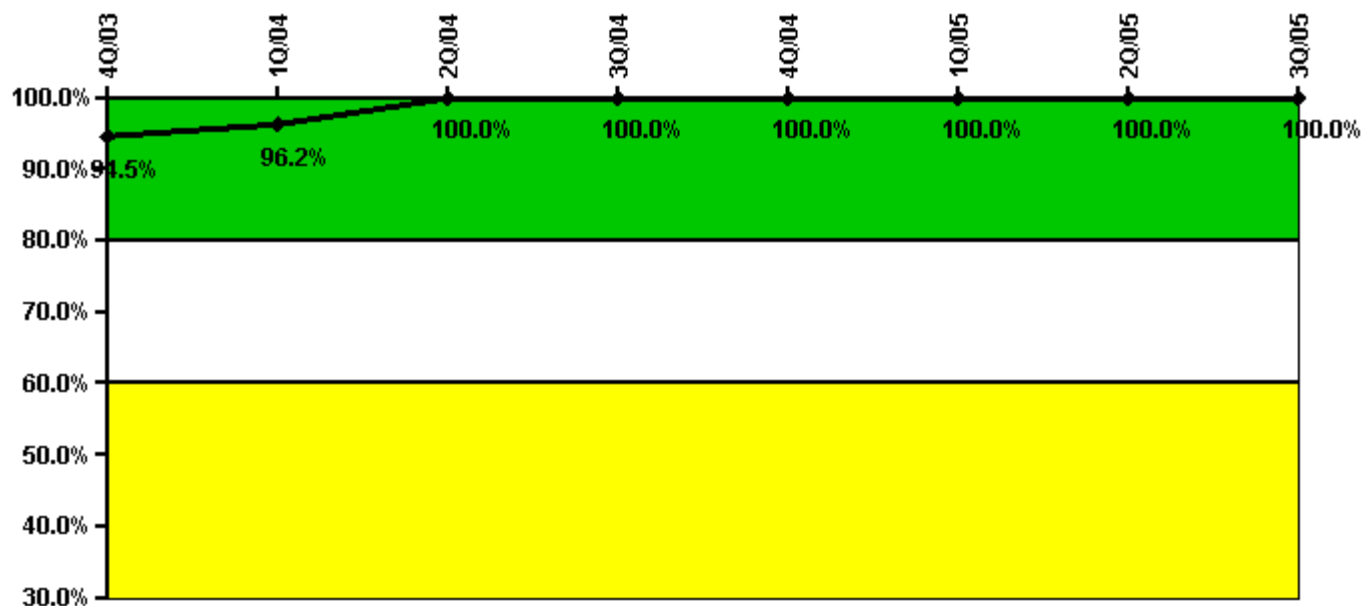
Thresholds: White < 90.0% Yellow < 70.0%

#### Notes

Drill/Exercise Performance	4Q/03	1Q/04	2Q/04	3Q/04	4Q/04	1Q/05	2Q/05	3Q/05
Successful opportunities	33.0	17.0	39.0	26.0	52.0	38.0	20.0	55.0
Total opportunities	34.0	18.0	43.0	28.0	53.0	39.0	22.0	56.0
Indicator value	96.7%	96.9%	95.2%	94.3%	95.7%	95.8%	95.4%	95.6%

Licensee Comments: none

### ERO Drill Participation



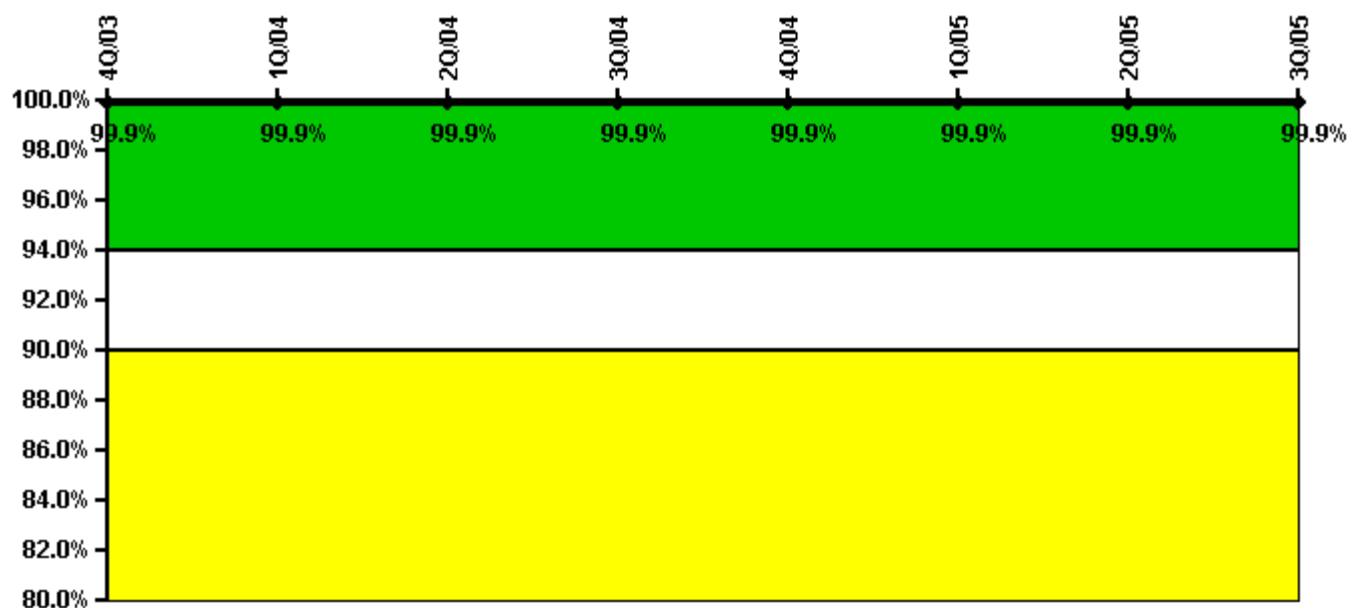
Thresholds: White < 80.0% Yellow < 60.0%

#### Notes

ERO Drill Participation	4Q/03	1Q/04	2Q/04	3Q/04	4Q/04	1Q/05	2Q/05	3Q/05
Participating Key personnel	52.0	51.0	54.0	55.0	56.0	58.0	61.0	65.0
Total Key personnel	55.0	53.0	54.0	55.0	56.0	58.0	61.0	65.0
Indicator value	94.5%	96.2%	100.0%	100.0%	100.0%	100.0%	100.0%	100.0%

Licensee Comments: none

### Alert & Notification System



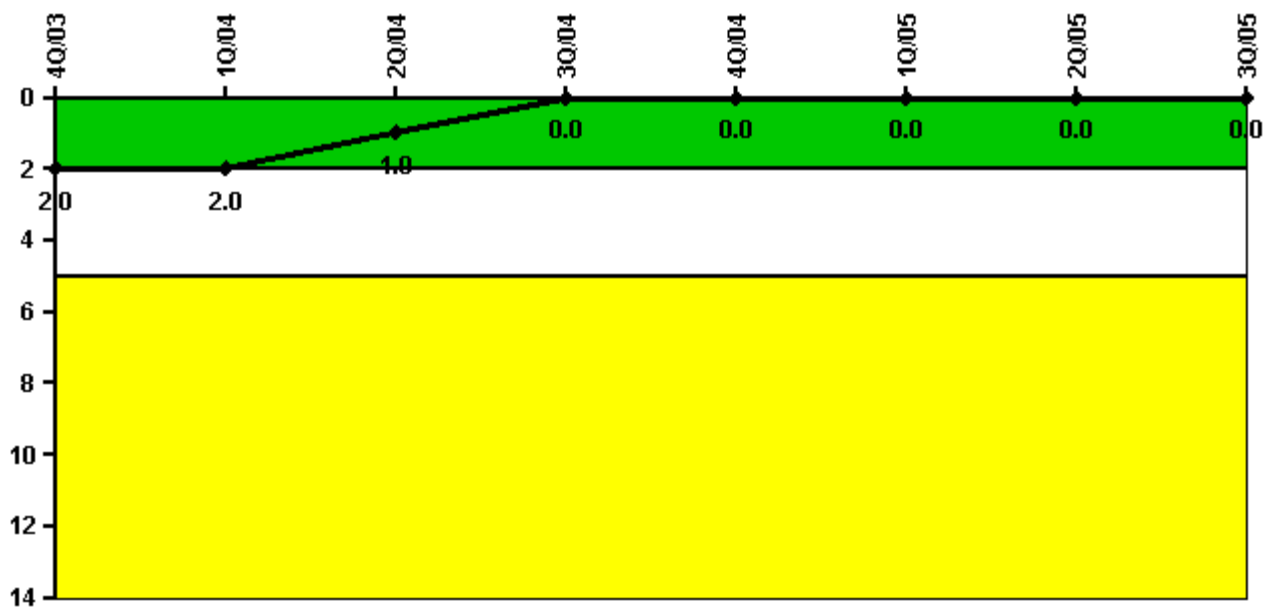
Thresholds: White < 94.0% Yellow < 90.0%

#### Notes

Alert & Notification System	4Q/03	1Q/04	2Q/04	3Q/04	4Q/04	1Q/05	2Q/05	3Q/05
Successful siren-tests	340	286	286	286	296	286	286	286
Total sirens-tests	341	286	286	286	297	286	286	286
Indicator value	99.9%	99.9%	99.9%	99.9%	99.9%	99.9%	99.9%	99.9%

Licensee Comments: none

### Occupational Exposure Control Effectiveness



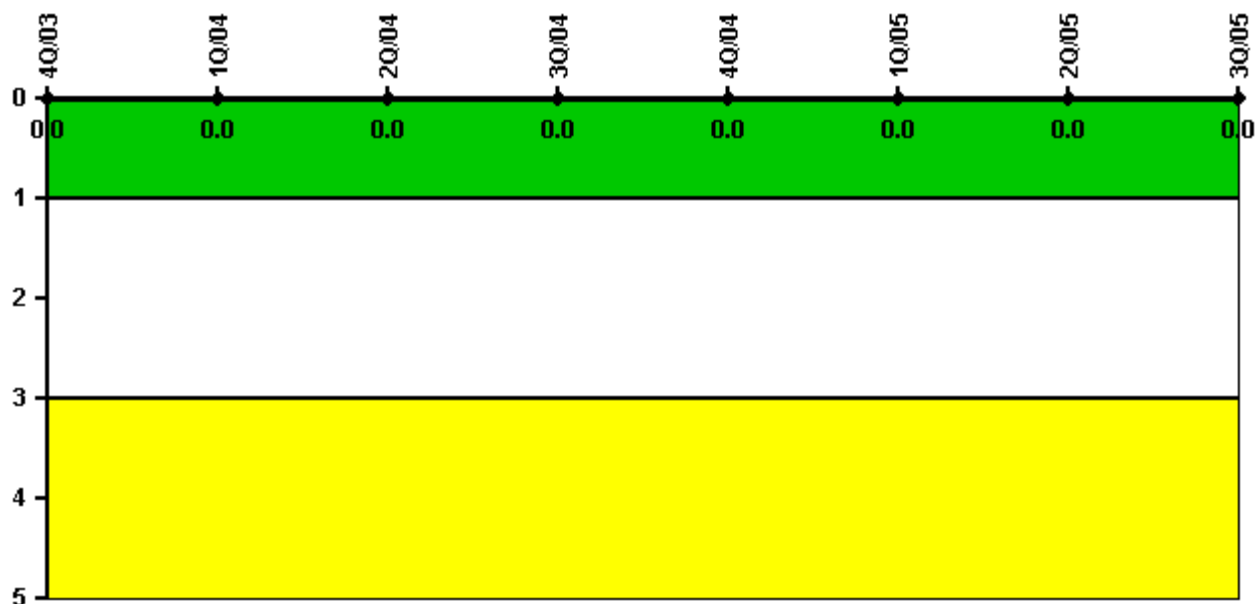
Thresholds: White > 2.0 Yellow > 5.0

#### Notes

Occupational Exposure Control Effectiveness	4Q/03	1Q/04	2Q/04	3Q/04	4Q/04	1Q/05	2Q/05	3Q/05
High radiation area occurrences	0	0	0	0	0	0	0	0
Very high radiation area occurrences	0	0	0	0	0	0	0	0
Unintended exposure occurrences	0	0	0	0	0	0	0	0
<b>Indicator value</b>	<b>2</b>	<b>2</b>	<b>1</b>	<b>0</b>	<b>0</b>	<b>0</b>	<b>0</b>	<b>0</b>

Licensee Comments: none

### RETS/ODCM Radiological Effluent



Thresholds: White > 1.0 Yellow > 3.0

#### Notes

RETS/ODCM Radiological Effluent	4Q/03	1Q/04	2Q/04	3Q/04	4Q/04	1Q/05	2Q/05	3Q/05
RETS/ODCM occurrences	0	0	0	0	0	0	0	0
Indicator value	0	0	0	0	0	0	0	0

Licensee Comments: none

[Physical Protection](#) information not publicly available.