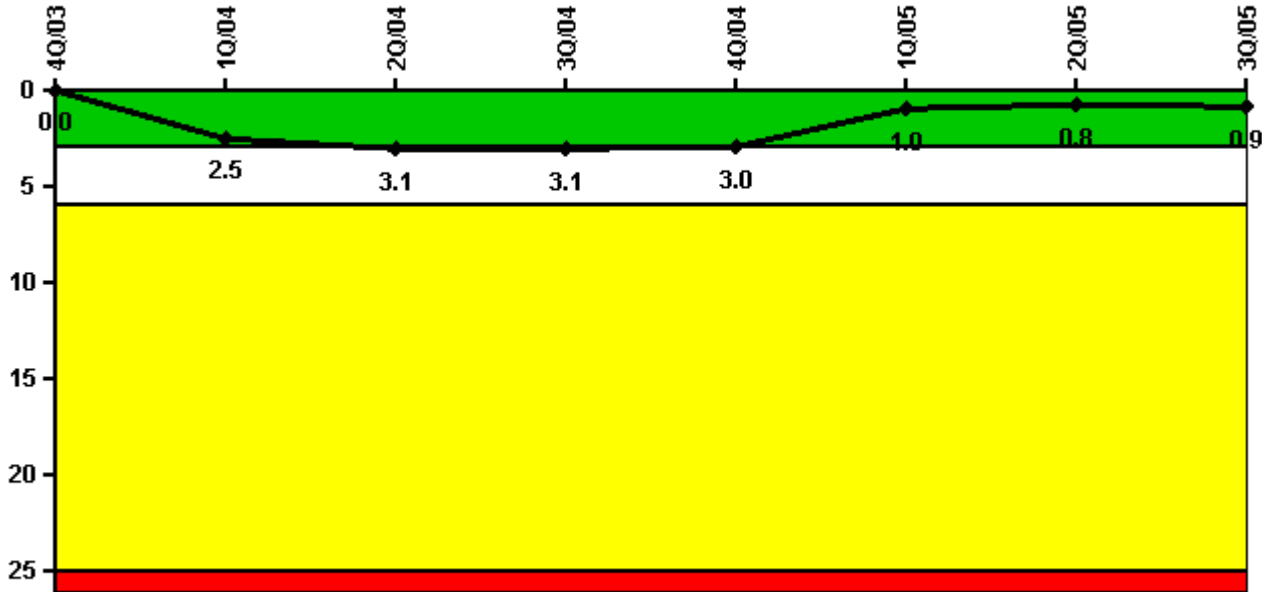


# Callaway

## 3Q/2005 Performance Indicators

Licensee's General Comments: none

### Unplanned Scrams per 7000 Critical Hrs



Thresholds: White > 3.0 Yellow > 6.0 Red > 25.0

### Notes

Unplanned Scrams per 7000 Critical Hrs	4Q/03	1Q/04	2Q/04	3Q/04	4Q/04	1Q/05	2Q/05	3Q/05
Unplanned scrams	0	3.0	0	0	0	1.0	0	0
Critical hours	2143.5	1844.9	670.7	2208.0	2209.0	1993.7	2125.2	1873.0
Indicator value	0	2.5	3.1	3.1	3.0	1.0	0.8	0.9

Licensee Comments: none

### Scrams with Loss of Normal Heat Removal



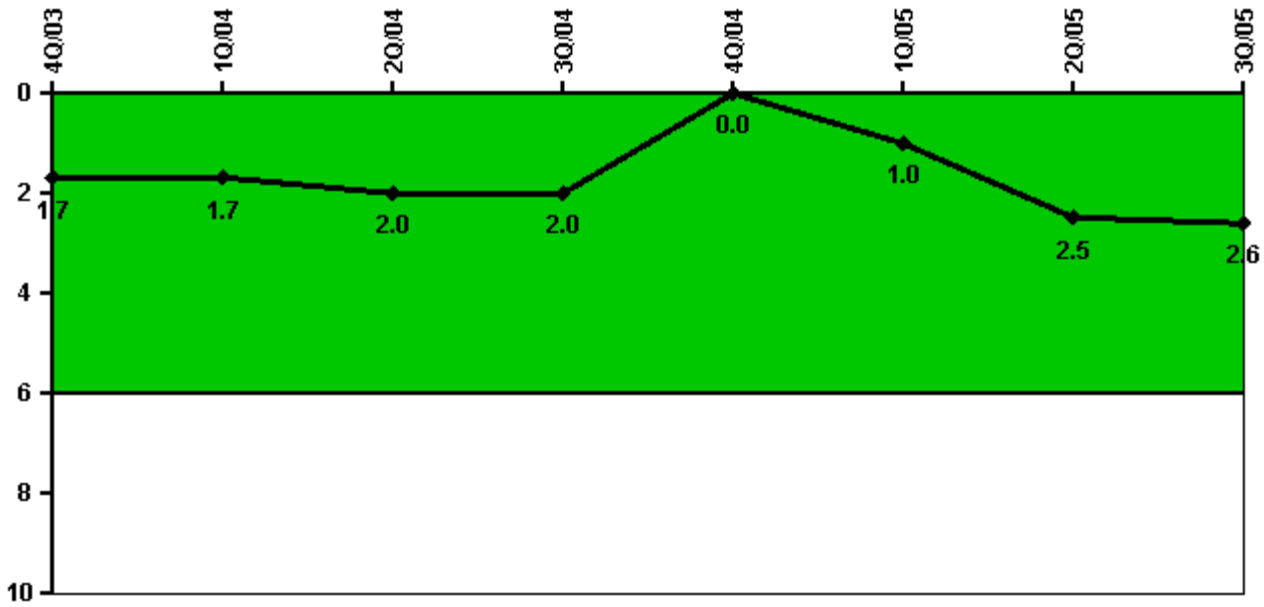
Thresholds: White > 2.0 Yellow > 10.0 Red > 20.0

#### Notes

Scrams with Loss of Normal Heat Removal	4Q/03	1Q/04	2Q/04	3Q/04	4Q/04	1Q/05	2Q/05	3Q/05
Scrams	0	0	0	0	0	0	0	0
Indicator value	0	0	0	0	0	0	0	0

Licensee Comments: none

### Unplanned Power Changes per 7000 Critical Hrs



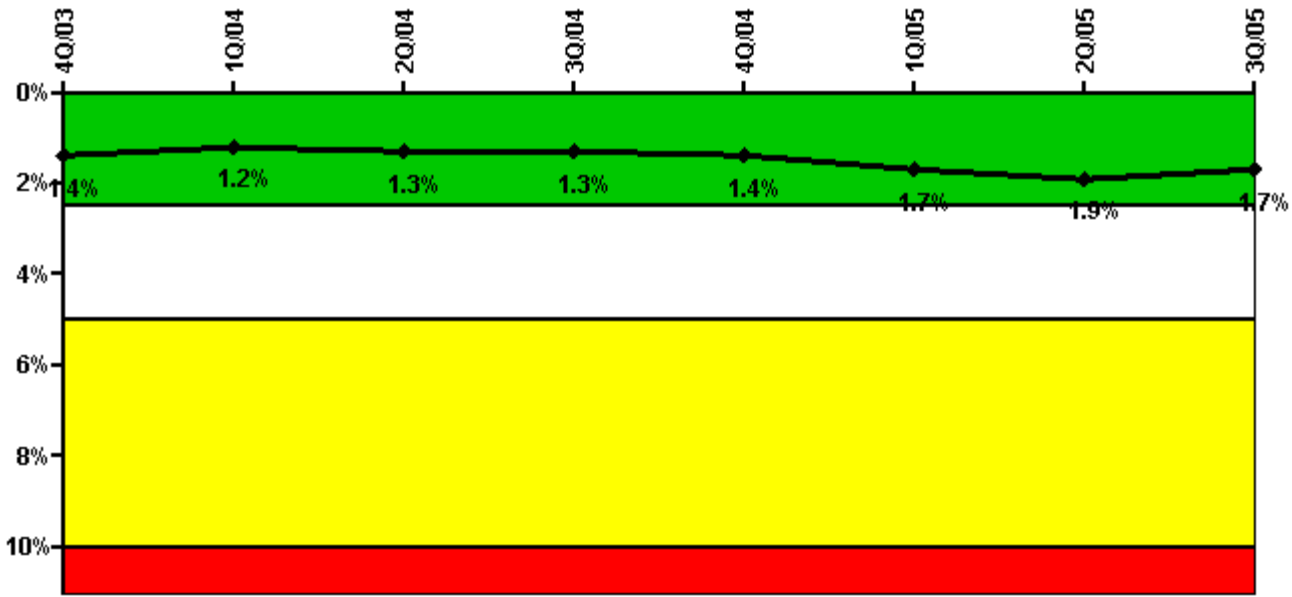
Thresholds: White > 6.0

#### Notes

Unplanned Power Changes per 7000 Critical Hrs	4Q/03	1Q/04	2Q/04	3Q/04	4Q/04	1Q/05	2Q/05	3Q/05
Unplanned power changes	2.0	0	0	0	0	1.0	2.0	0
Critical hours	2143.5	1844.9	670.7	2208.0	2209.0	1993.7	2125.2	1873.0
Indicator value	1.7	1.7	2.0	2.0	0	1.0	2.5	2.6

Licensee Comments: none

### Safety System Unavailability, Emergency AC Power



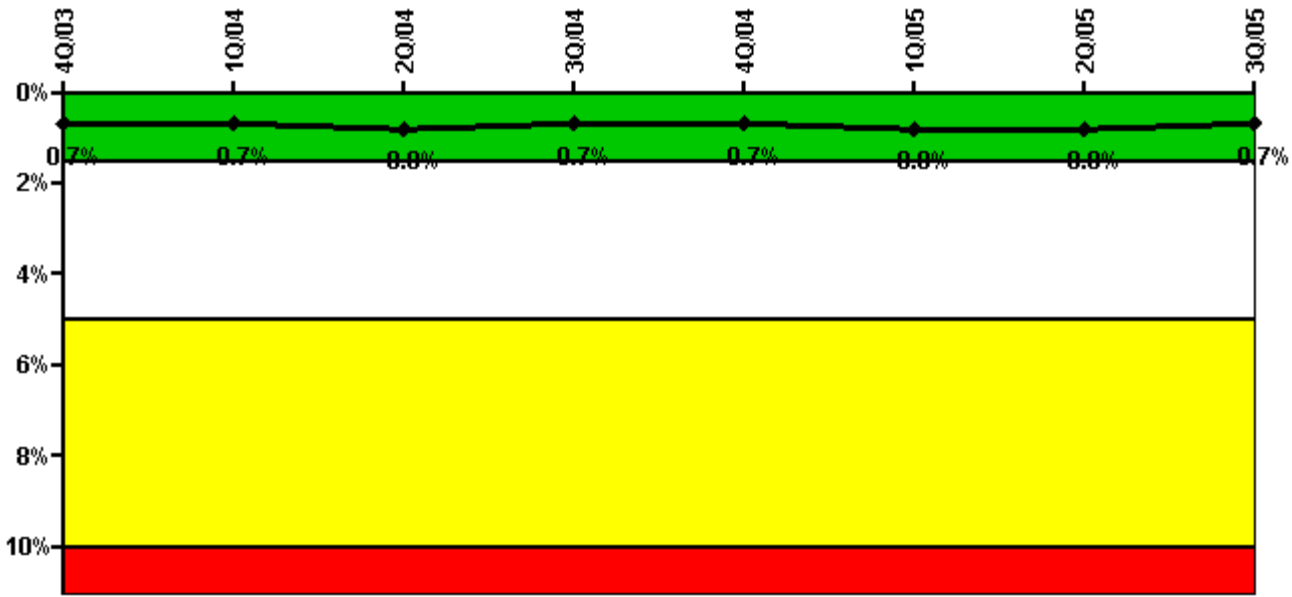
Thresholds: White > 2.5% Yellow > 5.0% Red > 10.0%

**Notes**

Safety System Unavailability, Emergency AC Power	4Q/03	1Q/04	2Q/04	3Q/04	4Q/04	1Q/05	2Q/05	3Q/05
<b>Train 1</b>								
Planned unavailable hours	3.00	3.40	3.90	51.90	19.90	69.20	1.80	2.40
Unplanned unavailable hours	0	28.00	0	0	0	0	5.00	0
Fault exposure hours	0	0	0	0	0	0	0	0
Effective Reset hours	0	0	0	0	0	0	0	0
Required hours	2208.00	2184.00	1234.35	2208.00	2209.00	2160.00	2183.00	1998.20
<b>Train 2</b>								
Planned unavailable hours	40.10	1.70	3.10	11.10	44.60	3.10	39.90	1.50
Unplanned unavailable hours	47.70	55.60	11.40	0	3.60	148.80	45.90	0
Fault exposure hours	0	0	0	0	0	0	0	0
Effective Reset hours	0	0	0	0	0	0	0	0
Required hours	2208.00	2184.00	1234.35	2208.00	2209.00	2160.00	2183.00	1998.20
<b>Indicator value</b>	<b>1.4%</b>	<b>1.2%</b>	<b>1.3%</b>	<b>1.3%</b>	<b>1.4%</b>	<b>1.7%</b>	<b>1.9%</b>	<b>1.7%</b>

Licensee Comments: none

### Safety System Unavailability, High Pressure Injection System (HPSI)



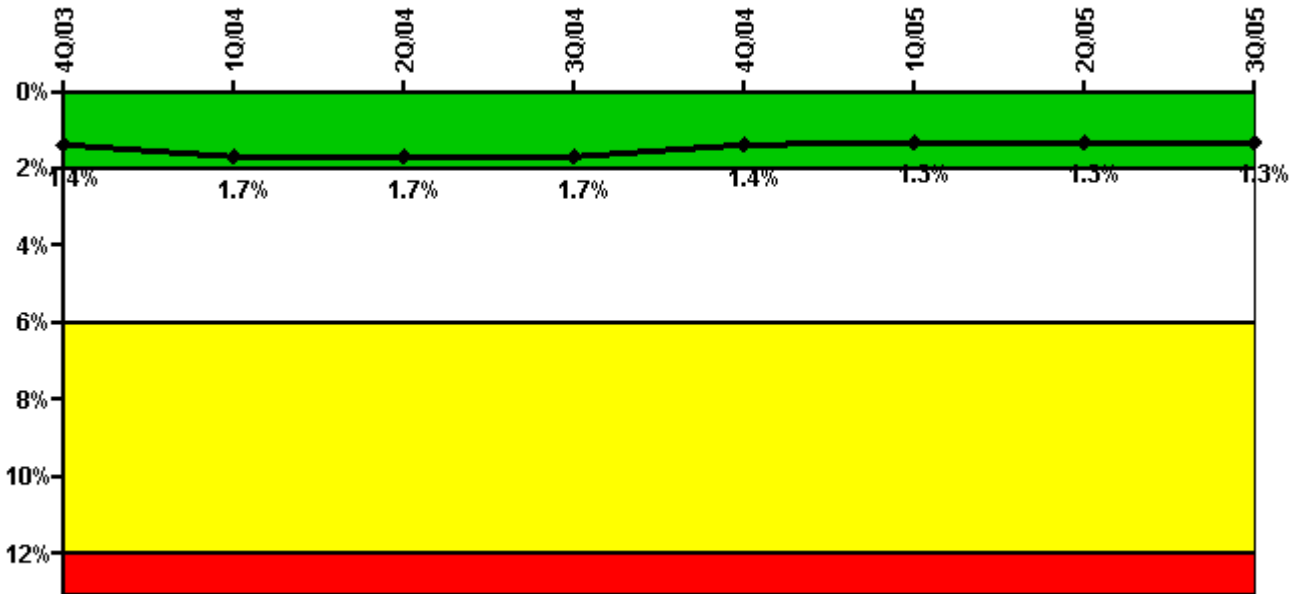
Thresholds: White > 1.5% Yellow > 5.0% Red > 10.0%

#### Notes

Safety System Unavailability, High Pressure Injection System (HPSI)	4Q/03	1Q/04	2Q/04	3Q/04	4Q/04	1Q/05	2Q/05	3Q/05
<b>Train 1</b>								
Planned unavailable hours	30.80	4.00	1.00	17.90	24.60	2.60	3.80	11.80
Unplanned unavailable hours	0	0	5.30	0	0	0	0	0
Fault exposure hours	0	0	0	0	0	0	0	0
Effective Reset hours	0	0	0	0	0	0	0	0
Required hours	2208.00	2160.00	764.25	2208.00	2209.00	2160.00	2183.00	1888.00
<b>Train 2</b>								
Planned unavailable hours	3.00	11.30	6.80	1.30	27.40	2.00	1.20	2.70
Unplanned unavailable hours	3.90	0	0	0	8.90	0	0	0
Fault exposure hours	0	0	0	0	0	0	0	0
Effective Reset hours	0	0	0	0	0	0	0	0
Required hours	2208.00	2160.00	764.25	2208.00	2209.00	2160.00	2183.00	1888.00
<b>Train 3</b>								
Planned unavailable hours	30.80	17.50	1.00	1.20	2.00	44.00	2.50	11.60
Unplanned unavailable hours	0	0	5.30	0	0	3.50	0	0
Fault exposure hours	0	0	0	0	0	0	0	0
Effective Reset hours	0	0	0	0	0	0	0	0
Required hours	2208.00	2160.00	737.70	2208.00	2209.00	2160.00	2183.00	1888.00
<b>Train 4</b>								
Planned unavailable hours	3.30	13.50	0.20	0.90	15.60	25.90	0.80	13.80
Unplanned unavailable hours	3.90	0	0	0	8.90	41.80	0	0
Fault exposure hours	0	0	0	0	0	0	0	0
Effective Reset hours	0	0	0	0	0	0	0	0
Required hours	2208.00	2160.00	737.70	2208.00	2209.00	2160.00	2183.00	1888.00
<b>Indicator value</b>	<b>0.7%</b>	<b>0.7%</b>	<b>0.8%</b>	<b>0.7%</b>	<b>0.7%</b>	<b>0.8%</b>	<b>0.8%</b>	<b>0.7%</b>

Licensee Comments: none

### Safety System Unavailability, Heat Removal System (AFW)



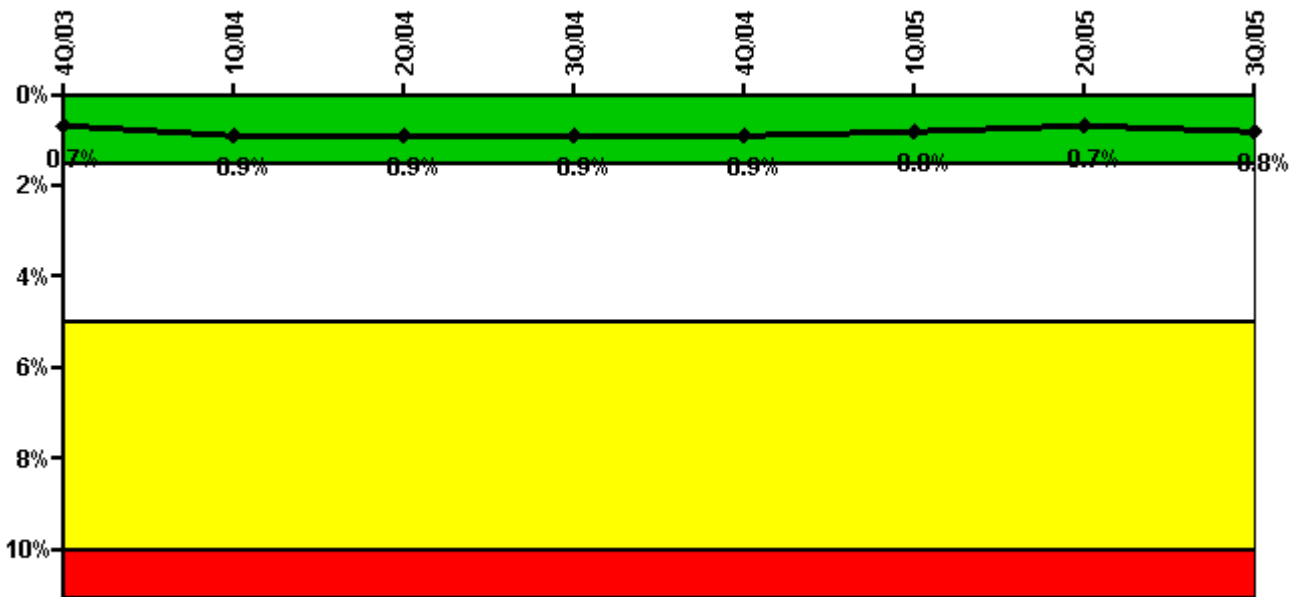
Thresholds: White > 2.0% Yellow > 6.0% Red > 12.0%

### Notes

Safety System Unavailability, Heat Removal System (AFW)	4Q/03	1Q/04	2Q/04	3Q/04	4Q/04	1Q/05	2Q/05	3Q/05
<b>Train 1</b>								
Planned unavailable hours	5.80	0	0	0.10	30.10	1.60	2.30	3.20
Unplanned unavailable hours	0	0	0	0	1.30	0	0	0
Fault exposure hours	0	0	0	0	0	0	0	0
Effective Reset hours	0	0	0	0	0	0	0	0
Required hours	2208.00	2136.00	737.70	2208.00	2209.00	2160.00	2183.00	1883.90
<b>Train 2</b>								
Planned unavailable hours	21.00	7.90	0	21.20	2.20	1.30	2.10	17.90
Unplanned unavailable hours	0	0	0	0	0	0	0	0
Fault exposure hours	0	0	0	0	0	0	0	0
Effective Reset hours	0	0	0	0	0	0	0	0
Required hours	2208.00	2136.00	737.70	2208.00	2209.00	2160.00	2183.00	1883.90
<b>Train 3</b>								
Planned unavailable hours	3.20	28.20	2.80	2.70	3.60	9.10	43.70	1.40
Unplanned unavailable hours	0	195.00	0	53.70	39.90	0	0	4.90
Fault exposure hours	0	0	0	0	0	0	0	0
Effective Reset hours	0	0	0	0	0	0	0	0
Required hours	2208.00	2136.00	737.70	2208.00	2209.00	2160.00	2183.00	1883.90
<b>Indicator value</b>	<b>1.4%</b>	<b>1.7%</b>	<b>1.7%</b>	<b>1.7%</b>	<b>1.4%</b>	<b>1.3%</b>	<b>1.3%</b>	<b>1.3%</b>

Licensee Comments: none

### Safety System Unavailability, Residual Heat Removal System



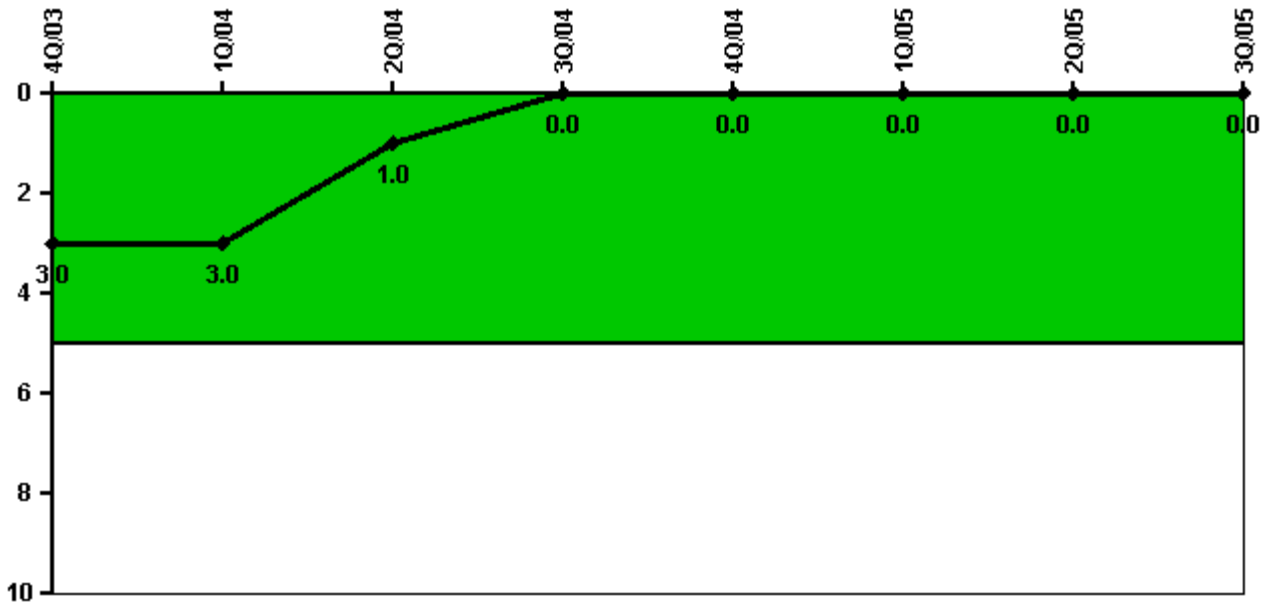
Thresholds: White > 1.5% Yellow > 5.0% Red > 10.0%

#### Notes

Safety System Unavailability, Residual Heat Removal System	4Q/03	1Q/04	2Q/04	3Q/04	4Q/04	1Q/05	2Q/05	3Q/05
<b>Train 1</b>								
Planned unavailable hours	29.90	79.90	8.40	1.30	2.10	2.30	2.50	39.50
Unplanned unavailable hours	0	0	5.30	0	0	0	0	3.00
Fault exposure hours	0	0	0	0	0	0	0	0
Effective Reset hours	0	0	0	0	0	0	0	0
Required hours	2208.00	2160.00	1171.70	2208.00	2209.00	2160.00	2183.00	1888.00
<b>Train 2</b>								
Planned unavailable hours	2.80	11.00	0.30	26.50	15.70	1.50	0.90	2.20
Unplanned unavailable hours	3.90	0	26.70	0	8.90	0	0	0
Fault exposure hours	0	0	0	0	0	0	0	0
Effective Reset hours	0	0	0	0	0	0	0	0
Required hours	2208.00	2160.00	1171.70	2208.00	2209.00	2160.00	2183.00	1888.00
<b>Indicator value</b>	<b>0.7%</b>	<b>0.9%</b>	<b>0.9%</b>	<b>0.9%</b>	<b>0.9%</b>	<b>0.8%</b>	<b>0.7%</b>	<b>0.8%</b>

Licensee Comments: none

### Safety System Functional Failures (PWR)



Thresholds: White > 5.0

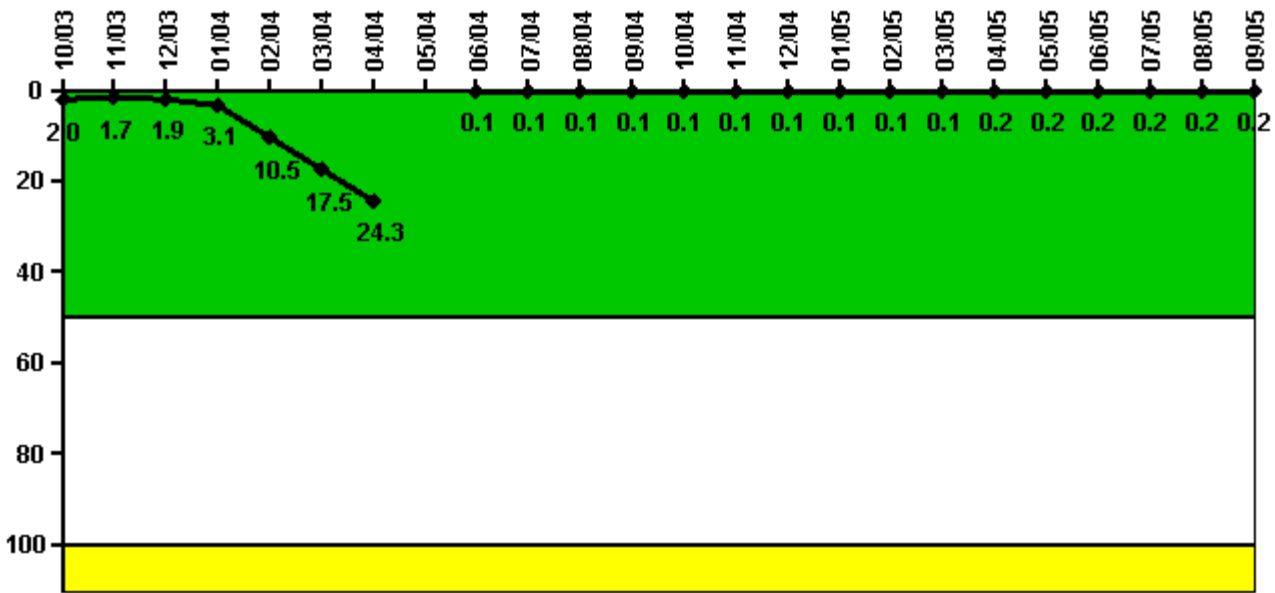
#### Notes

Safety System Functional Failures (PWR)	4Q/03	1Q/04	2Q/04	3Q/04	4Q/04	1Q/05	2Q/05	3Q/05
Safety System Functional Failures	0	0	0	0	0	0	0	0
Indicator value	3	3	1	0	0	0	0	0

Licensee Comments: none



### Reactor Coolant System Activity



Thresholds: White > 50.0 Yellow > 100.0

#### Notes

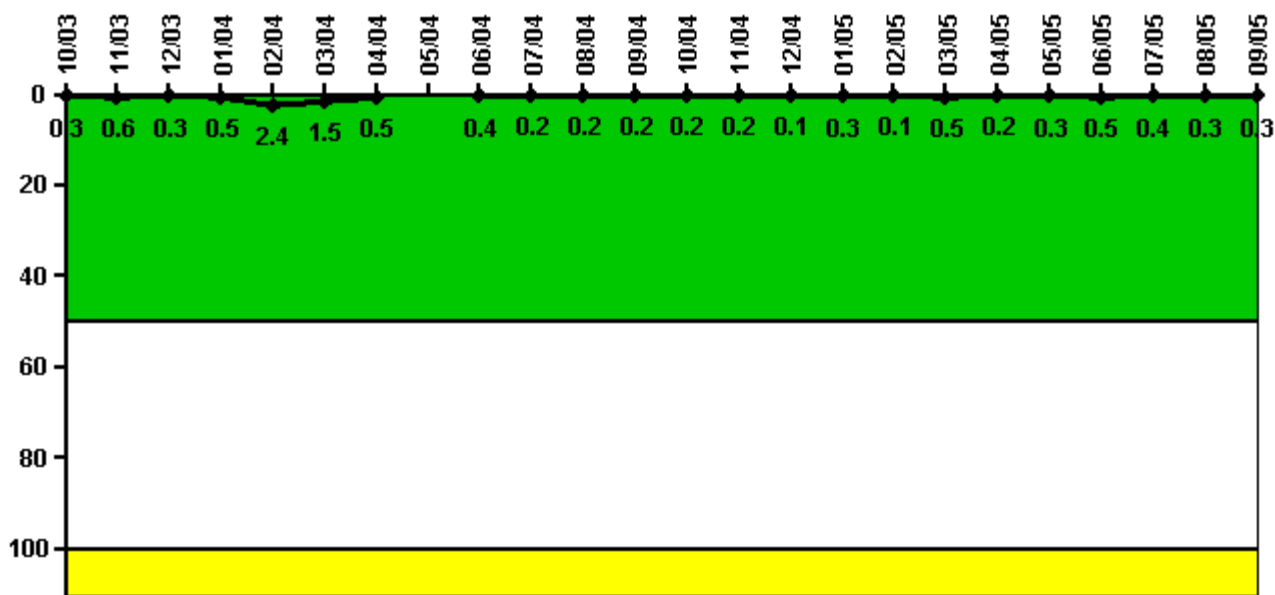
Reactor Coolant System Activity	10/03	11/03	12/03	1/04	2/04	3/04	4/04	5/04	6/04	7/04	8/04	9/04
Maximum activity	0.005990	0.005120	0.005810	0.009300	0.031500	0.052600	0.073000	N/A	0.000690	0.000750	0.000884	0.001087
Technical specification limit	0.3	0.3	0.3	0.3	0.3	0.3	0.3	1.0	1.0	1.0	1.0	1.0
Indicator value	2.0	1.7	1.9	3.1	10.5	17.5	24.3	N/A	0.1	0.1	0.1	0.1

Reactor Coolant System Activity	10/04	11/04	12/04	1/05	2/05	3/05	4/05	5/05	6/05	7/05	8/05	9/05
Maximum activity	0.001150	0.001170	0.001220	0.001470	0.001410	0.001410	0.001540	0.001640	0.001630	0.001620	0.001660	0.001710
Technical specification limit	1.0	1.0	1.0	1.0	1.0	1.0	1.0	1.0	1.0	1.0	1.0	1.0
Indicator value	0.1	0.1	0.1	0.1	0.1	0.1	0.2	0.2	0.2	0.2	0.2	0.2

Licensee Comments: none

### Reactor Coolant System Leakage



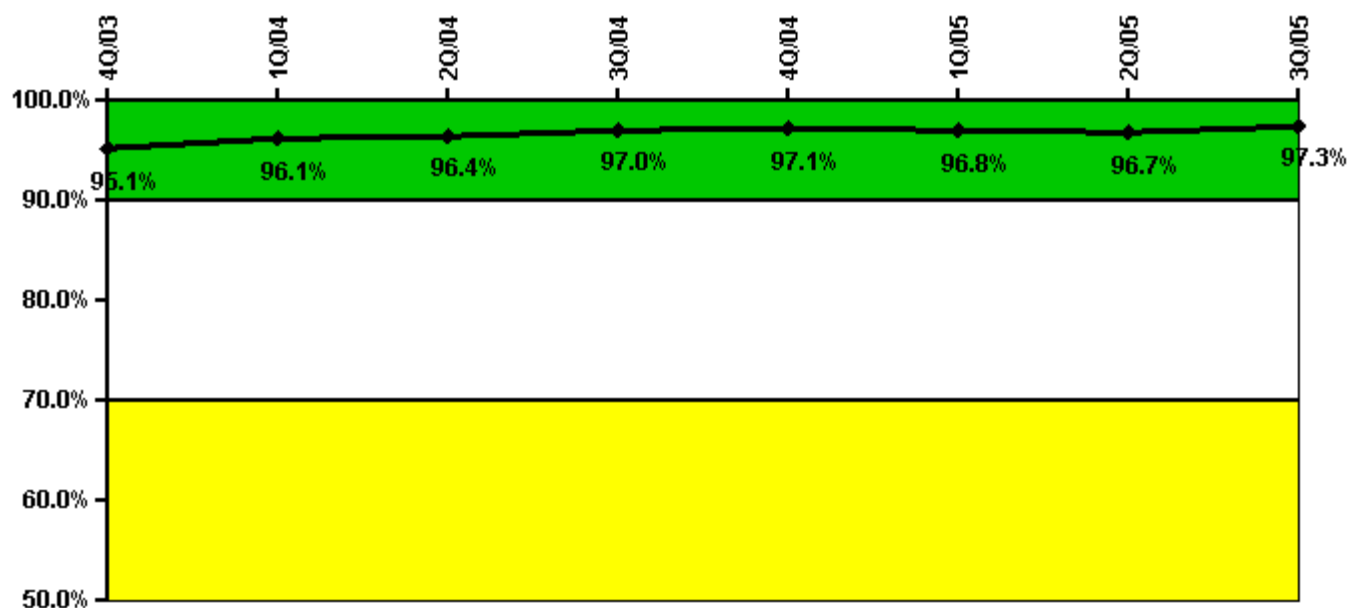
Thresholds: White > 50.0 Yellow > 100.0

#### Notes

Reactor Coolant System Leakage	10/03	11/03	12/03	1/04	2/04	3/04	4/04	5/04	6/04	7/04	8/04	9/04
Maximum leakage	0.031	0.060	0.025	0.045	0.236	0.145	0.047	N/A	0.040	0.018	0.020	0.018
Technical specification limit	10.0	10.0	10.0	10.0	10.0	10.0	10.0	10.0	10.0	10.0	10.0	10.0
Indicator value	0.3	0.6	0.3	0.5	2.4	1.5	0.5	N/A	0.4	0.2	0.2	0.2
Reactor Coolant System Leakage	10/04	11/04	12/04	1/05	2/05	3/05	4/05	5/05	6/05	7/05	8/05	9/05
Maximum leakage	0.024	0.015	0.006	0.026	0.012	0.049	0.016	0.031	0.051	0.038	0.030	0.030
Technical specification limit	10.0	10.0	10.0	10.0	10.0	10.0	10.0	10.0	10.0	10.0	10.0	10.0
Indicator value	0.2	0.2	0.1	0.3	0.1	0.5	0.2	0.3	0.5	0.4	0.3	0.3

Licensee Comments: none

### Drill/Exercise Performance



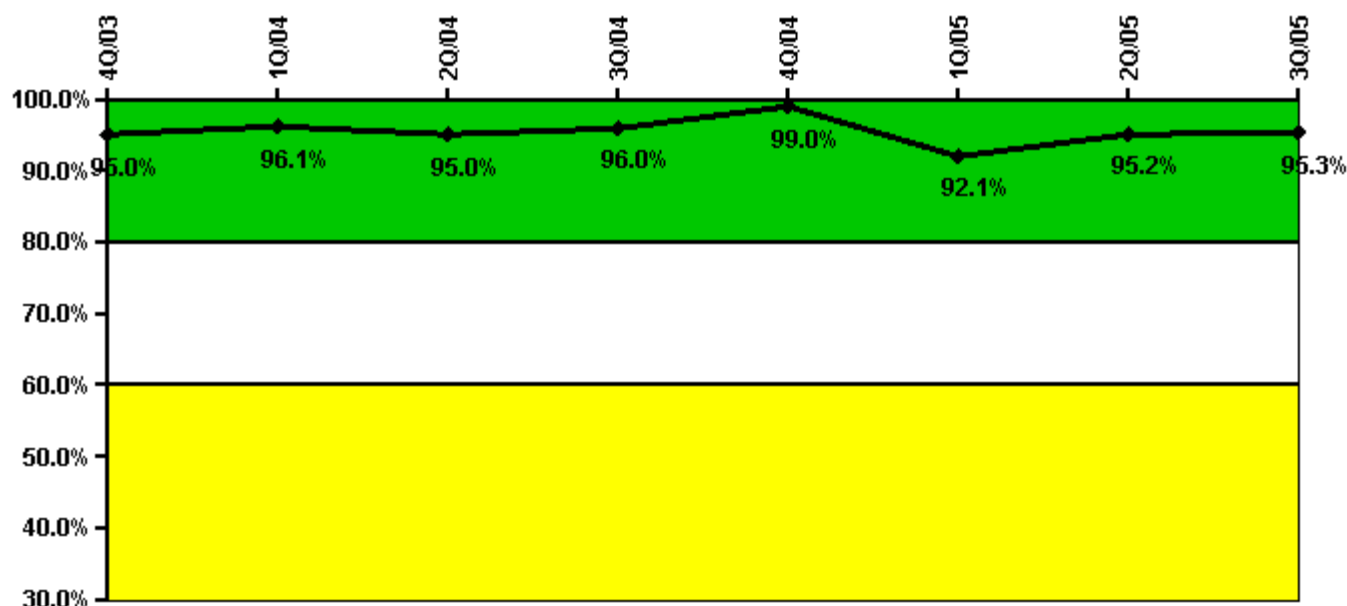
Thresholds: White < 90.0% Yellow < 70.0%

#### Notes

Drill/Exercise Performance	4Q/03	1Q/04	2Q/04	3Q/04	4Q/04	1Q/05	2Q/05	3Q/05
Successful opportunities	35.0	28.0	0	30.0	43.0	36.0	33.0	14.0
Total opportunities	36.0	28.0	0	31.0	44.0	38.0	34.0	14.0
Indicator value	95.1%	96.1%	96.4%	97.0%	97.1%	96.8%	96.7%	97.3%

Licensee Comments: none

### ERO Drill Participation



**Thresholds: White < 80.0% Yellow < 60.0%**

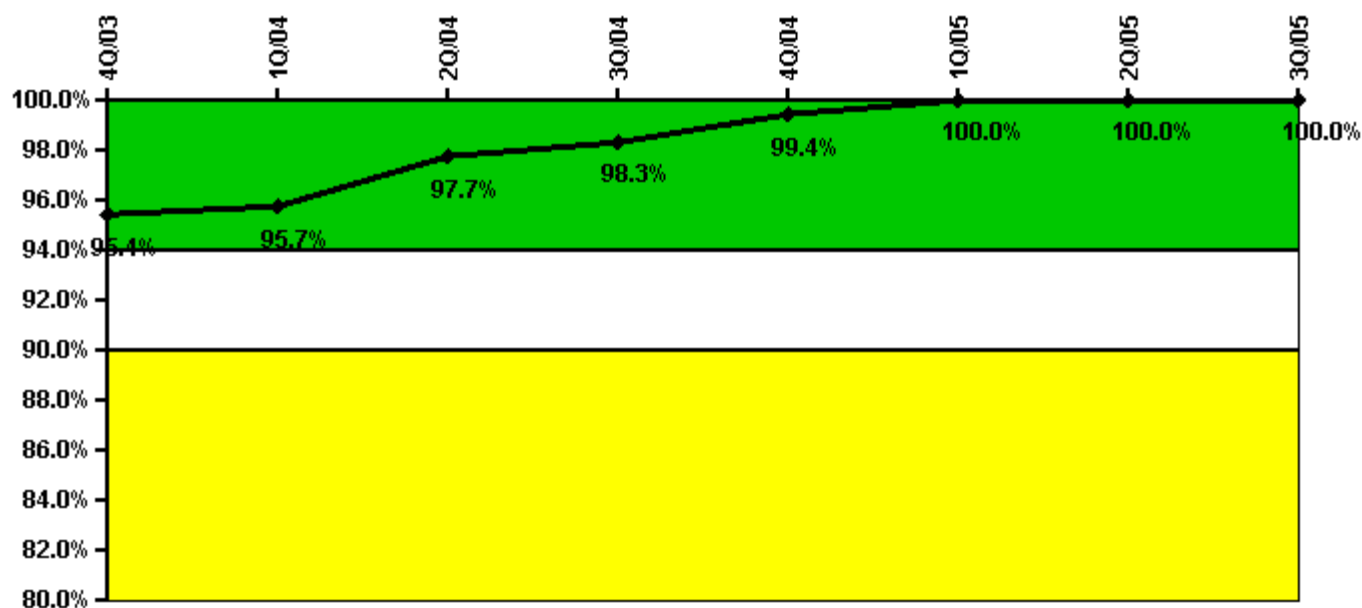
**Notes**

ERO Drill Participation	4Q/03	1Q/04	2Q/04	3Q/04	4Q/04	1Q/05	2Q/05	3Q/05
Participating Key personnel	96.0	99.0	95.0	96.0	96.0	93.0	100.0	101.0
Total Key personnel	101.0	103.0	100.0	100.0	97.0	101.0	105.0	106.0
Indicator value	95.0%	96.1%	95.0%	96.0%	99.0%	92.1%	95.2%	95.3%

Licensee Comments:

2Q/05: Added a key ERO member due to license activation in the second quarter 2005 that was not initially captured in the ERO tracking system. The change affects the data for the second quarter 2005. This change did not result in crossing a threshold or changing the color of the indicator.

### Alert & Notification System



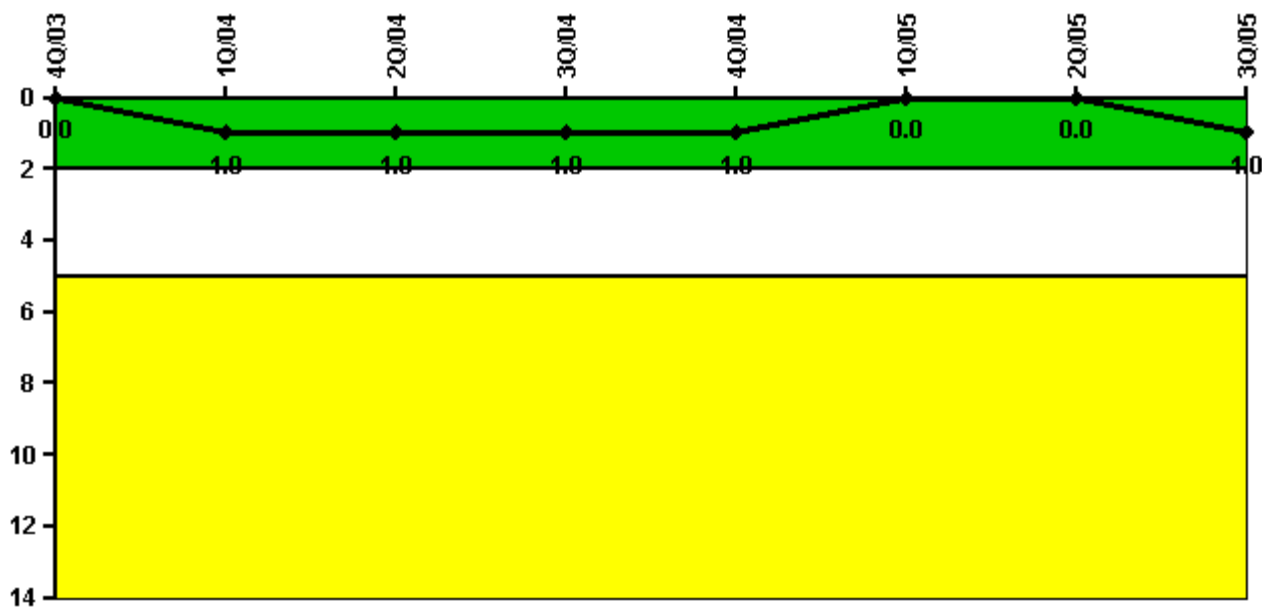
Thresholds: White < 94.0% Yellow < 90.0%

#### Notes

Alert & Notification System	4Q/03	1Q/04	2Q/04	3Q/04	4Q/04	1Q/05	2Q/05	3Q/05
Successful siren-tests	83	85	87	87	87	87	87	87
Total sirens-tests	87	87	87	87	87	87	87	87
Indicator value	95.4%	95.7%	97.7%	98.3%	99.4%	100.0%	100.0%	100.0%

Licensee Comments: none

### Occupational Exposure Control Effectiveness



Thresholds: White > 2.0 Yellow > 5.0

#### Notes

Occupational Exposure Control Effectiveness	4Q/03	1Q/04	2Q/04	3Q/04	4Q/04	1Q/05	2Q/05	3Q/05
High radiation area occurrences	0	1	0	0	0	0	0	1
Very high radiation area occurrences	0	0	0	0	0	0	0	0
Unintended exposure occurrences	0	0	0	0	0	0	0	0
<b>Indicator value</b>	<b>0</b>	<b>1</b>	<b>1</b>	<b>1</b>	<b>1</b>	<b>0</b>	<b>0</b>	<b>1</b>

Licensee Comments: none

### RETS/ODCM Radiological Effluent



Thresholds: White > 1.0 Yellow > 3.0

#### Notes

RETS/ODCM Radiological Effluent	4Q/03	1Q/04	2Q/04	3Q/04	4Q/04	1Q/05	2Q/05	3Q/05
RETS/ODCM occurrences	0	0	0	0	0	0	0	0
Indicator value	0	0	0	0	0	0	0	0

Licensee Comments: none

[Physical Protection](#) information not publicly available.