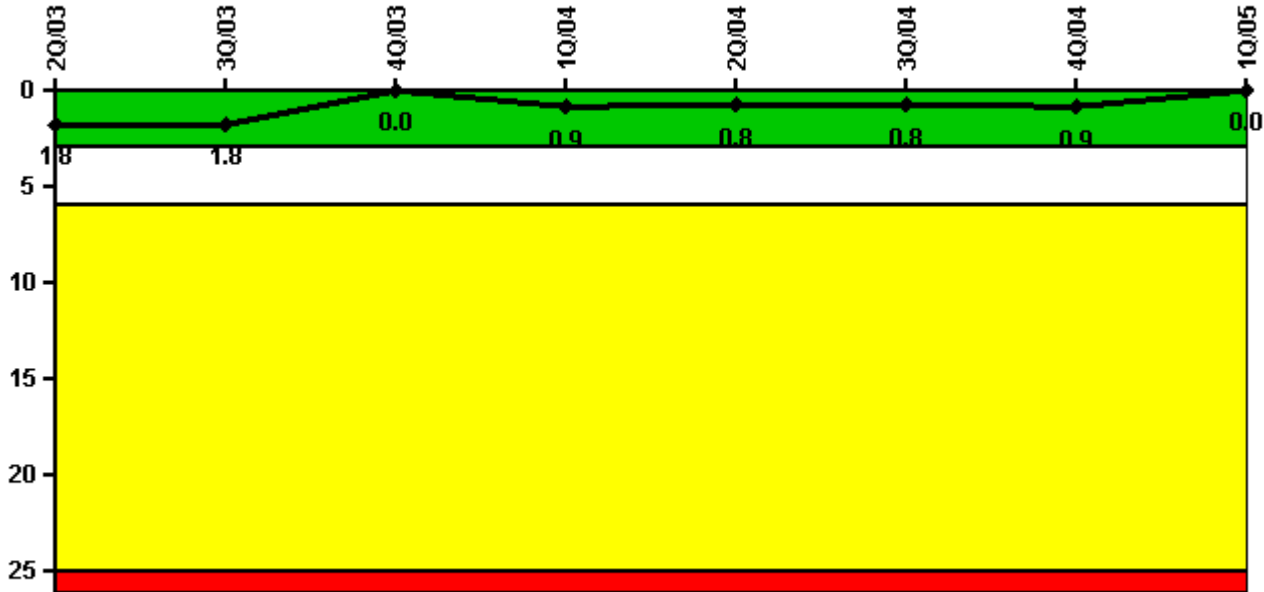


Farley 1

1Q/2005 Performance Indicators

Licensee's General Comments: none

Unplanned Scrams per 7000 Critical Hrs



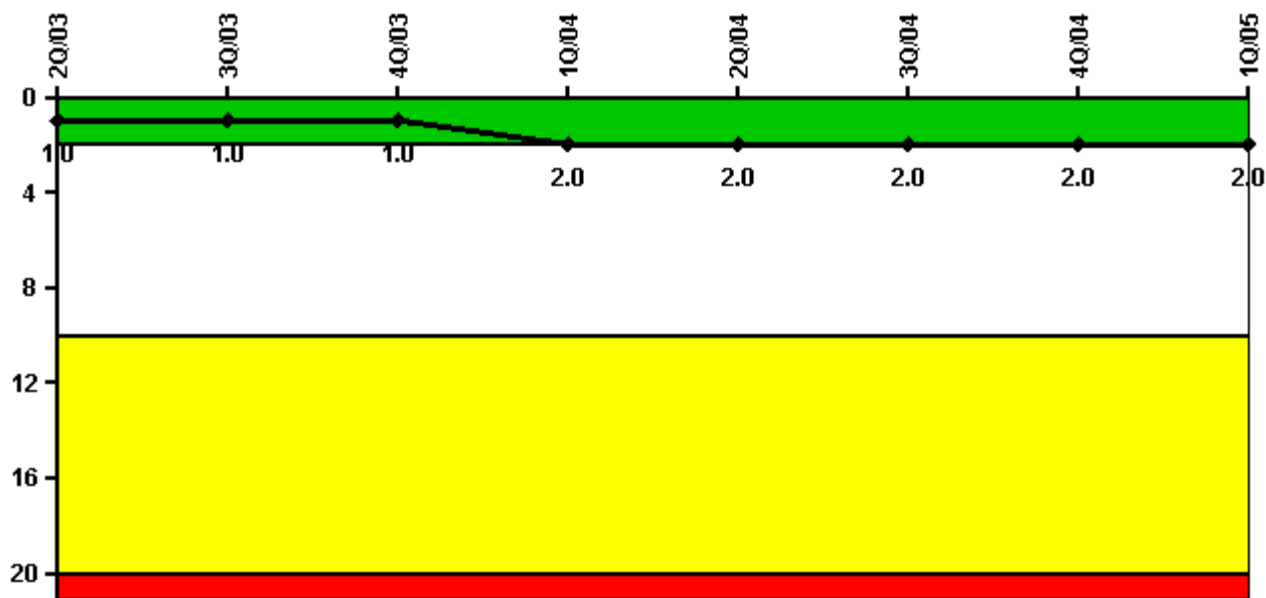
Thresholds: White > 3.0 Yellow > 6.0 Red > 25.0

Notes

Unplanned Scrams per 7000 Critical Hrs	2Q/03	3Q/03	4Q/03	1Q/04	2Q/04	3Q/04	4Q/04	1Q/05
Unplanned scrams	0	0	0	1.0	0	0	0	0
Critical hours	1468.7	2208.0	2209.0	2159.4	2183.0	2208.0	1160.8	2160.0
Indicator value	1.8	1.8	0	0.9	0.8	0.8	0.9	0

Licensee Comments: none

Scrams with Loss of Normal Heat Removal



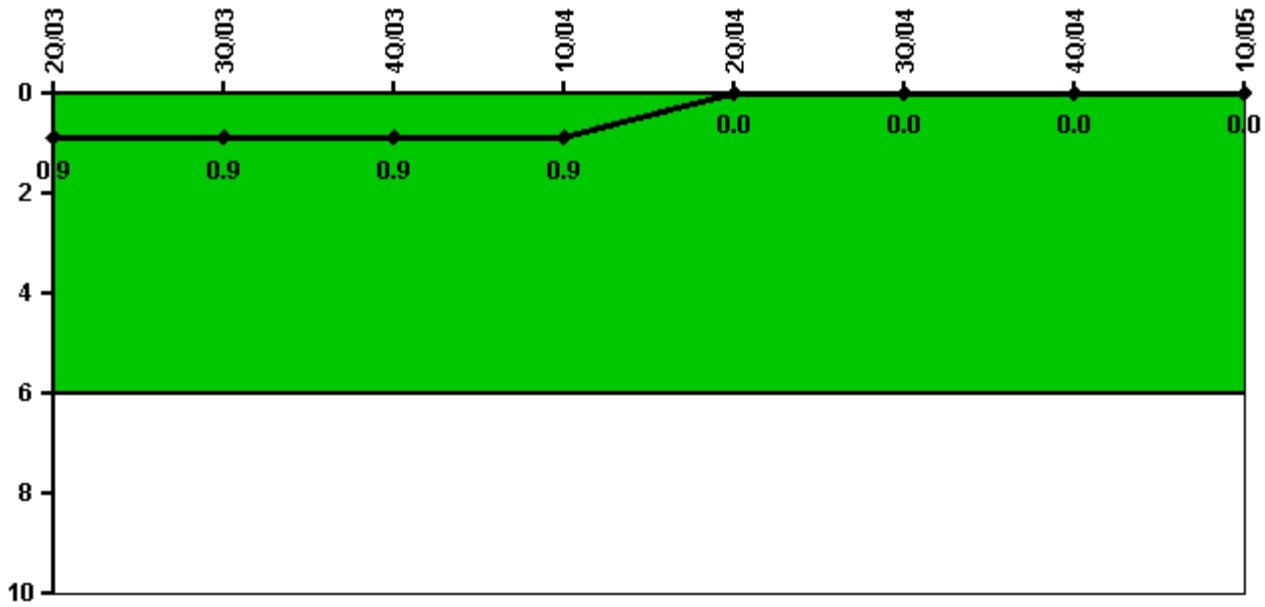
Thresholds: White > 2.0 Yellow > 10.0 Red > 20.0

Notes

Scrams with Loss of Normal Heat Removal	2Q/03	3Q/03	4Q/03	1Q/04	2Q/04	3Q/04	4Q/04	1Q/05
Scrams	0	0	0	1.0	0	0	0	0
Indicator value	1.0	1.0	1.0	2.0	2.0	2.0	2.0	2.0

Licensee Comments: none

Unplanned Power Changes per 7000 Critical Hrs



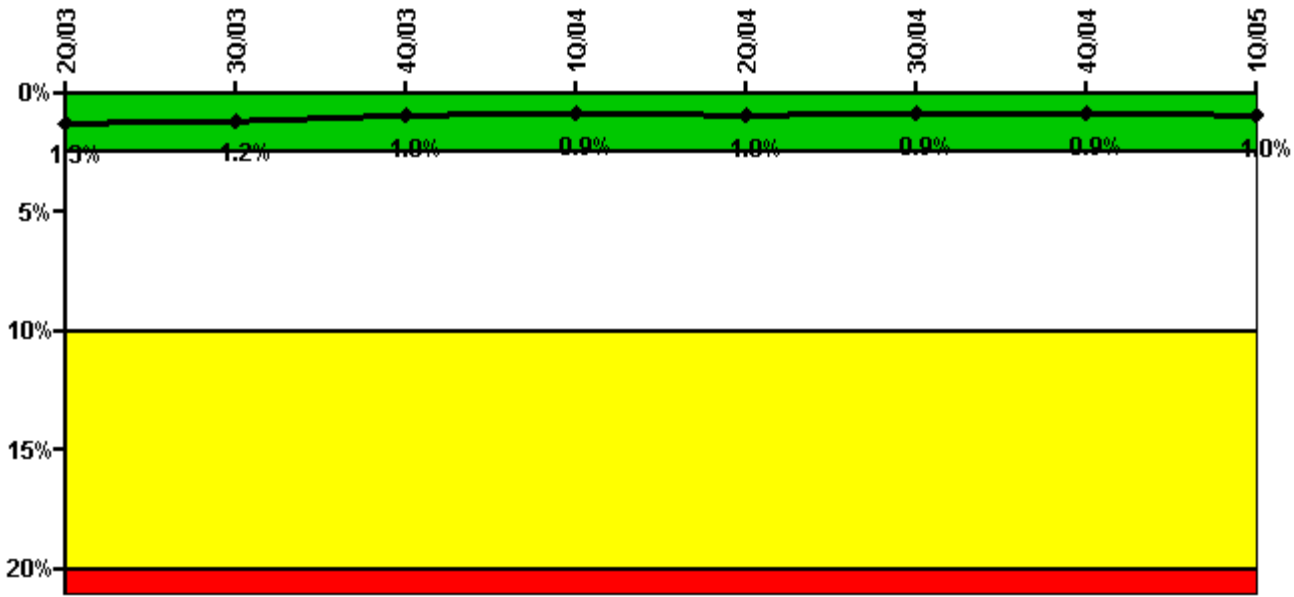
Thresholds: White > 6.0

Notes

Unplanned Power Changes per 7000 Critical Hrs	2Q/03	3Q/03	4Q/03	1Q/04	2Q/04	3Q/04	4Q/04	1Q/05
Unplanned power changes	1.0	0	0	0	0	0	0	0
Critical hours	1468.7	2208.0	2209.0	2159.4	2183.0	2208.0	1160.8	2160.0
Indicator value	0.9	0.9	0.9	0.9	0	0	0	0

Licensee Comments: none

Safety System Unavailability, Emergency AC Power, >2EDG



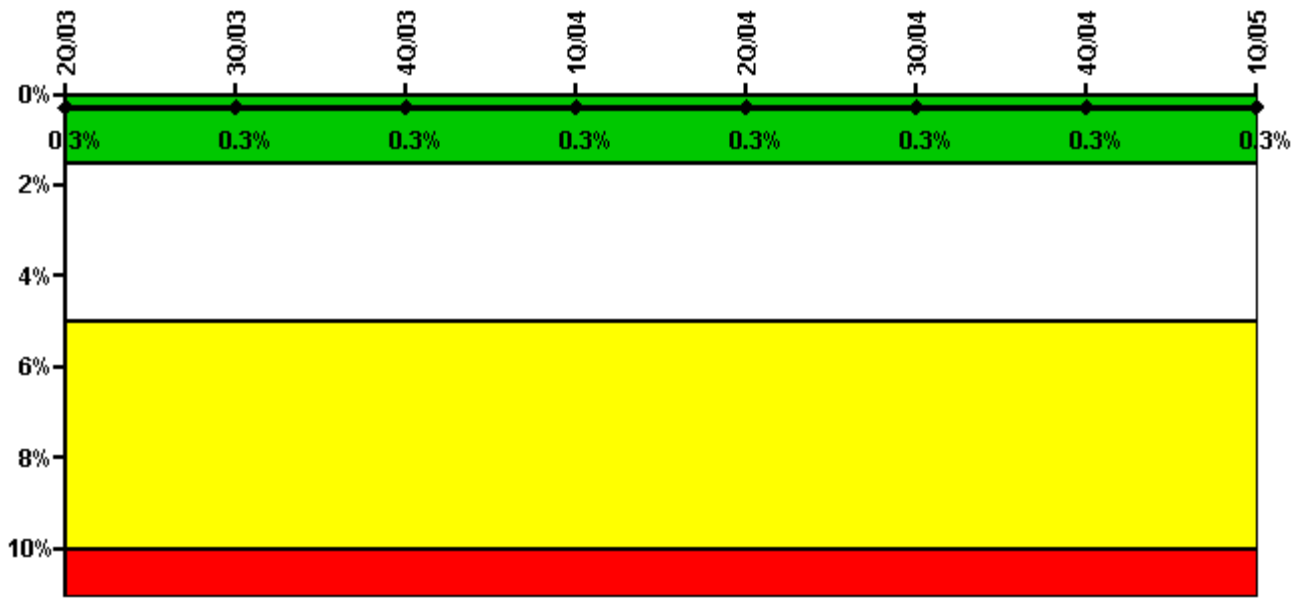
Thresholds: White > 2.5% Yellow > 10.0% Red > 20.0%

Notes

Safety System Unavailability, Emergency AC Power, >2EDG	2Q/03	3Q/03	4Q/03	1Q/04	2Q/04	3Q/04	4Q/04	1Q/05
Train 1								
Planned unavailable hours	125.40	26.10	29.70	0	44.00	2.60	2.70	4.30
Unplanned unavailable hours	1.40	0	0	0	0	0	0	0
Fault exposure hours	0	0	0	0	0	0	0	0
Effective Reset hours	0	0	0	0	0	0	0	0
Required hours	2183.00	2208.00	2209.00	2184.00	2183.00	2208.00	2209.00	2160.00
Train 2								
Planned unavailable hours	0.30	30.20	0	3.00	0.30	30.10	0	26.10
Unplanned unavailable hours	0	0	0	0	0	0	0	14.00
Fault exposure hours	0	0	0	0	0	0	0	0
Effective Reset hours	0	0	0	0	0	0	0	0
Required hours	2183.00	2208.00	2209.00	2184.00	2183.00	2208.00	2209.00	2160.00
Train 3								
Planned unavailable hours	7.40	10.20	3.90	99.10	40.50	34.00	3.20	12.20
Unplanned unavailable hours	0	0	0	0	0	0	1.20	0
Fault exposure hours	0	0	0	0	0	0	0	0
Effective Reset hours	0	0	0	0	0	0	0	0
Required hours	2183.00	2208.00	2209.00	2184.00	2183.00	2208.00	2209.00	2160.00
Indicator value	1.3%	1.2%	1.0%	0.9%	1.0%	0.9%	0.9%	1.0%

Licensee Comments: none

Safety System Unavailability, High Pressure Injection System (HPSI)



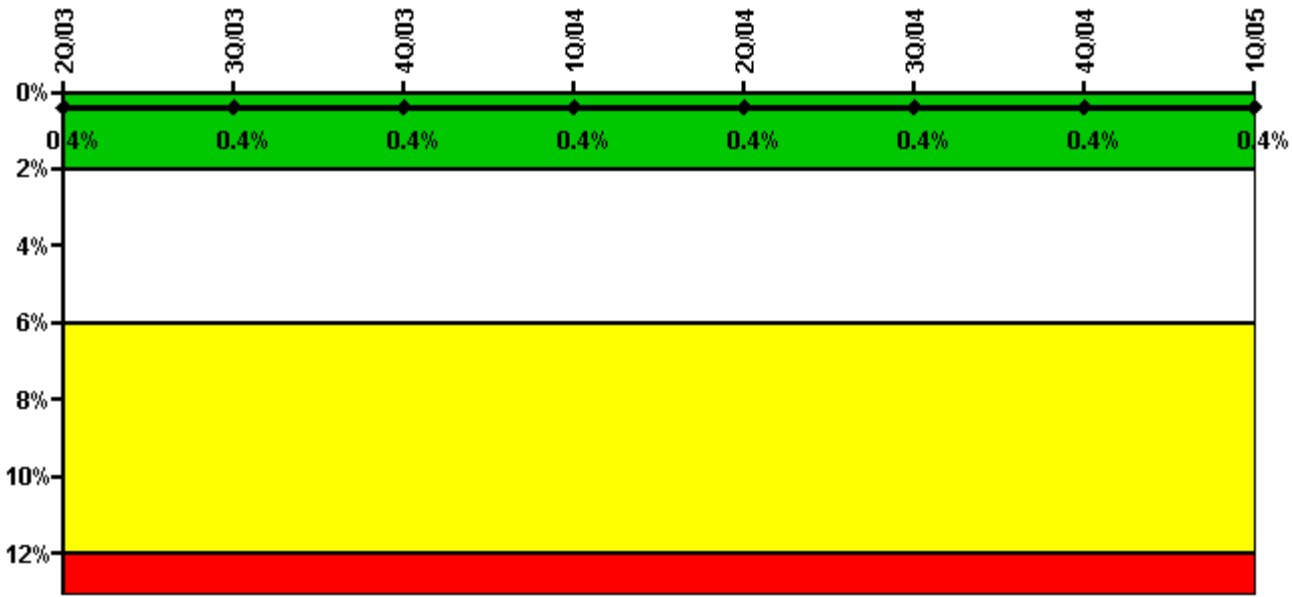
Thresholds: White > 1.5% Yellow > 5.0% Red > 10.0%

Notes

Safety System Unavailability, High Pressure Injection System (HPSI)	2Q/03	3Q/03	4Q/03	1Q/04	2Q/04	3Q/04	4Q/04	1Q/05
Train 1								
Planned unavailable hours	2.00	4.20	3.70	5.10	1.90	7.10	2.50	2.70
Unplanned unavailable hours	0	3.80	0	0	0	0	0	0
Fault exposure hours	0	0	0	0	0	0	0	0
Effective Reset hours	0	0	0	0	0	0	0	0
Required hours	1468.73	2208.00	2209.00	2159.37	2183.00	2208.00	1160.84	2160.00
Train 2								
Planned unavailable hours	2.30	6.00	4.40	3.60	6.60	9.90	2.90	4.90
Unplanned unavailable hours	0	0	0	0	0	0	0	0
Fault exposure hours	0	0	0	0	0	0	0	0
Effective Reset hours	0	0	0	0	0	0	0	0
Required hours	1468.73	2208.00	2209.00	2159.37	2183.00	2208.00	1160.84	2160.00
Indicator value	0.3%	0.3%	0.3%	0.3%	0.3%	0.3%	0.3%	0.3%

Licensee Comments: none

Safety System Unavailability, Heat Removal System (AFW)



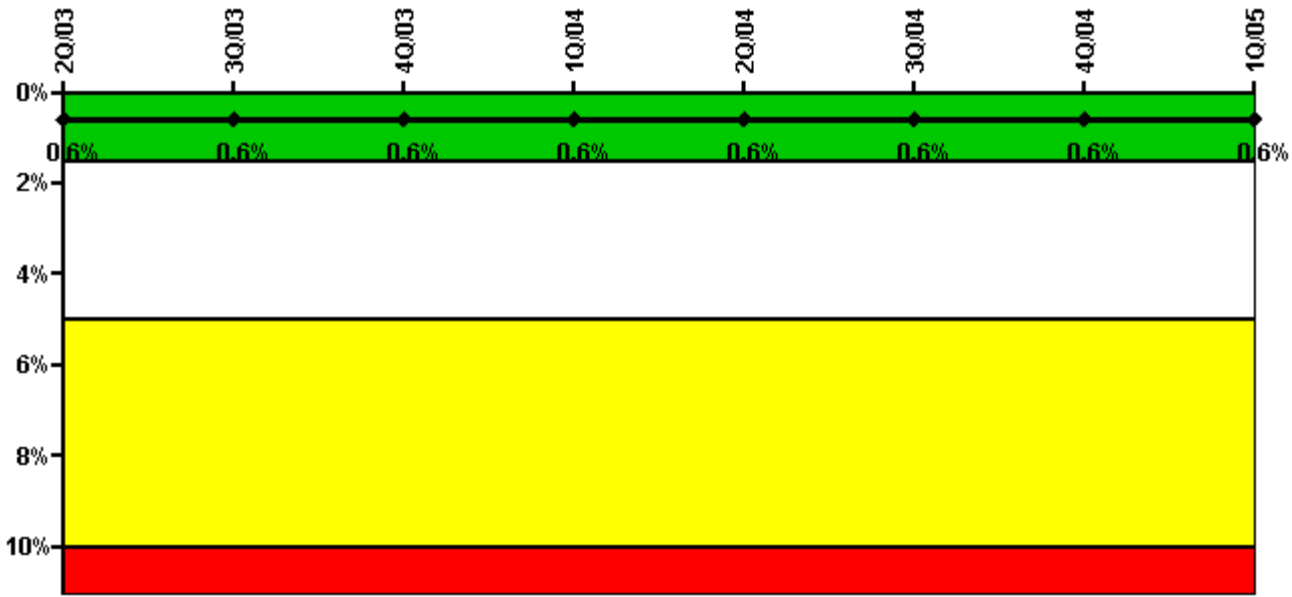
Thresholds: White > 2.0% Yellow > 6.0% Red > 12.0%

Notes

Safety System Unavailability, Heat Removal System (AFW)	2Q/03	3Q/03	4Q/03	1Q/04	2Q/04	3Q/04	4Q/04	1Q/05
Train 1								
Planned unavailable hours	2.70	9.90	5.10	10.00	3.20	5.30	2.80	11.40
Unplanned unavailable hours	0	3.80	0	0	0	0	2.70	0
Fault exposure hours	0	0	0	0	0	0	0	0
Effective Reset hours	0	0	0	0	0	0	0	0
Required hours	1468.73	2208.00	2209.00	2159.37	2183.00	2208.00	1160.84	2160.00
Train 2								
Planned unavailable hours	2.30	7.90	4.40	5.80	8.10	3.50	2.90	5.50
Unplanned unavailable hours	0	0	0	0	0	0	2.70	0
Fault exposure hours	0	0	0	0	0	0	0	0
Effective Reset hours	0	0	0	0	0	0	0	0
Required hours	1468.73	2208.00	2209.00	2159.37	2183.00	2208.00	1160.84	2160.00
Train 3								
Planned unavailable hours	40.00	3.40	7.10	27.50	1.90	16.40	3.20	50.60
Unplanned unavailable hours	0	0	0	0	0	0	0	0
Fault exposure hours	0	0	0	0	0	0	0	0
Effective Reset hours	0	0	0	0	0	0	0	0
Required hours	1468.73	2208.00	2209.00	2159.37	2183.00	2208.00	1160.84	2160.00
Indicator value	0.4%	0.4%	0.4%	0.4%	0.4%	0.4%	0.4%	0.4%

Licensee Comments: none

Safety System Unavailability, Residual Heat Removal System



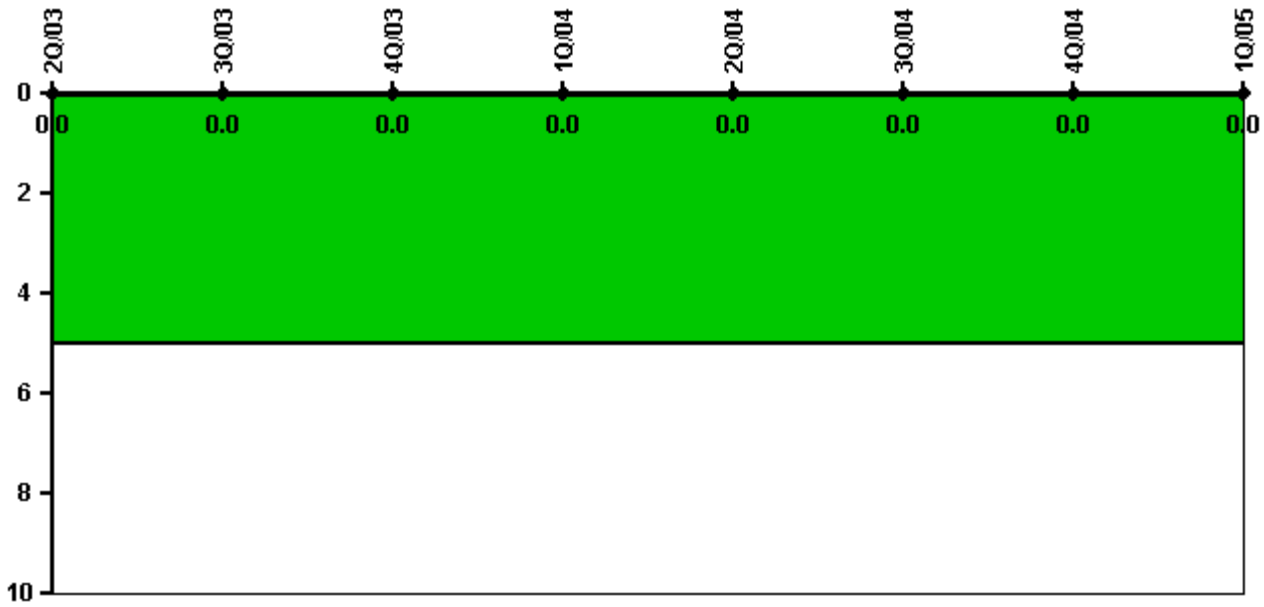
Thresholds: White > 1.5% Yellow > 5.0% Red > 10.0%

Notes

Safety System Unavailability, Residual Heat Removal System	2Q/03	3Q/03	4Q/03	1Q/04	2Q/04	3Q/04	4Q/04	1Q/05
Train 1								
Planned unavailable hours	7.90	11.00	4.50	20.60	3.00	24.40	4.40	18.60
Unplanned unavailable hours	0	3.80	0	0	0	0	0	0
Fault exposure hours	0	0	0	0	0	0	0	0
Effective Reset hours	0	0	0	0	0	0	0	0
Required hours	2183.00	2208.00	2209.00	2184.00	2183.00	2208.00	2209.00	2160.00
Train 2								
Planned unavailable hours	15.90	8.00	12.00	4.60	21.50	24.00	5.50	20.90
Unplanned unavailable hours	0	0	0	0	0	0	0	0
Fault exposure hours	0	0	0	0	0	0	0	0
Effective Reset hours	0	0	0	0	0	0	0	0
Required hours	2183.00	2208.00	2209.00	2184.00	2183.00	2208.00	2209.00	2160.00
Indicator value	0.6%	0.6%	0.6%	0.6%	0.6%	0.6%	0.6%	0.6%

Licensee Comments: none

Safety System Functional Failures (PWR)



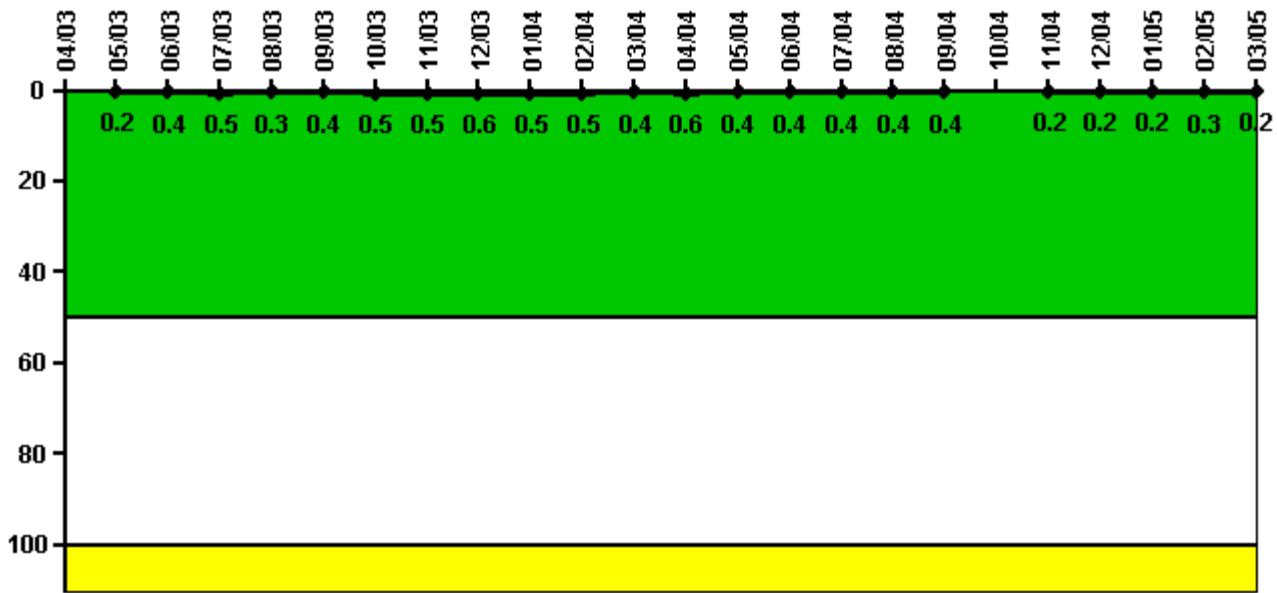
Thresholds: White > 5.0

Notes

Safety System Functional Failures (PWR)	2Q/03	3Q/03	4Q/03	1Q/04	2Q/04	3Q/04	4Q/04	1Q/05
Safety System Functional Failures	0	0	0	0	0	0	0	0
Indicator value	0	0	0	0	0	0	0	0

Licensee Comments: none

Reactor Coolant System Activity



Thresholds: White > 50.0 Yellow > 100.0

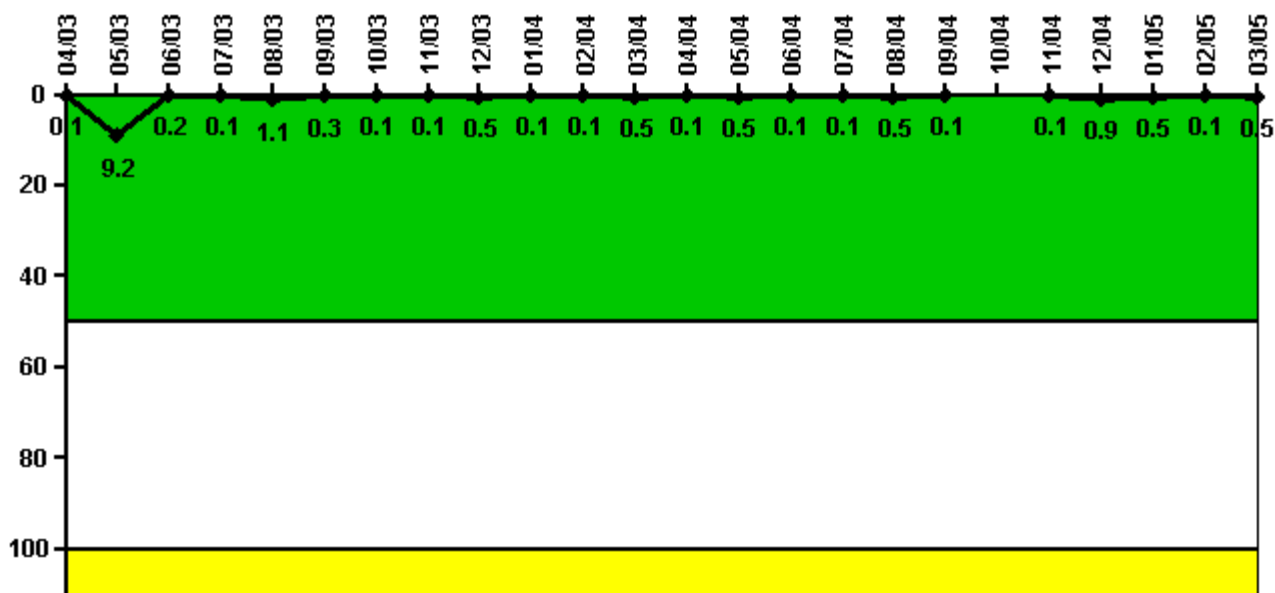
Notes

Reactor Coolant System Activity	4/03	5/03	6/03	7/03	8/03	9/03	10/03	11/03	12/03	1/04	2/04	3/04
Maximum activity	N/A	0.001185	0.002150	0.002310	0.001570	0.002002	0.002449	0.002735	0.002806	0.002376	0.002283	0.002167
Technical specification limit	0.5	0.5	0.5	0.5	0.5	0.5	0.5	0.5	0.5	0.5	0.5	0.5
Indicator value	N/A	0.2	0.4	0.5	0.3	0.4	0.5	0.5	0.6	0.5	0.5	0.4

Reactor Coolant System Activity	4/04	5/04	6/04	7/04	8/04	9/04	10/04	11/04	12/04	1/05	2/05	3/05
Maximum activity	0.002815	0.002128	0.001935	0.001817	0.001885	0.001885	N/A	0.000922	0.000989	0.001074	0.001336	0.000968
Technical specification limit	0.5	0.5	0.5	0.5	0.5	0.5	0.5	0.5	0.5	0.5	0.5	0.5
Indicator value	0.6	0.4	0.4	0.4	0.4	0.4	N/A	0.2	0.2	0.2	0.3	0.2

Licensee Comments: none

Reactor Coolant System Leakage



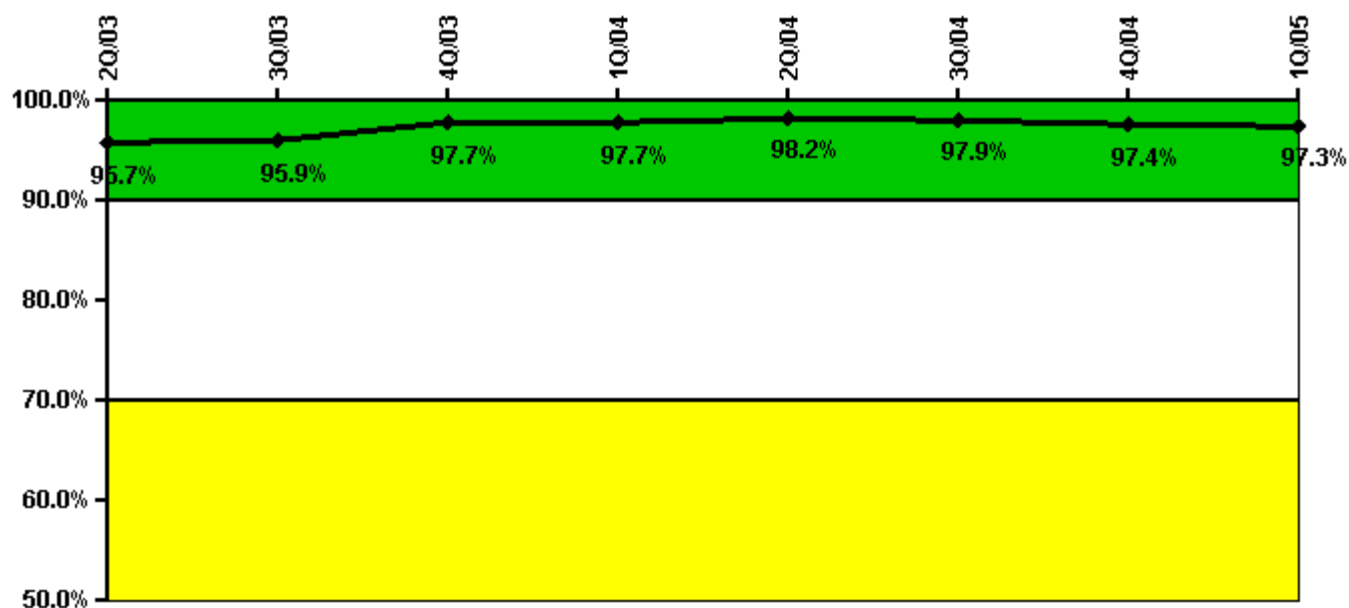
Thresholds: White > 50.0 Yellow > 100.0

Notes

Reactor Coolant System Leakage	4/03	5/03	6/03	7/03	8/03	9/03	10/03	11/03	12/03	1/04	2/04	3/04
Maximum leakage	0.008	0.917	0.015	0.010	0.109	0.027	0.009	0.009	0.053	0.009	0.009	0.048
Technical specification limit	10.0	10.0	10.0	10.0	10.0	10.0	10.0	10.0	10.0	10.0	10.0	10.0
Indicator value	0.1	9.2	0.2	0.1	1.1	0.3	0.1	0.1	0.5	0.1	0.1	0.5
Reactor Coolant System Leakage	4/04	5/04	6/04	7/04	8/04	9/04	10/04	11/04	12/04	1/05	2/05	3/05
Maximum leakage	0.009	0.051	0.009	0.012	0.048	0.010	N/A	0.010	0.090	0.050	0.010	0.050
Technical specification limit	10.0	10.0	10.0	10.0	10.0	10.0	10.0	10.0	10.0	10.0	10.0	10.0
Indicator value	0.1	0.5	0.1	0.1	0.5	0.1	N/A	0.1	0.9	0.5	0.1	0.5

Licensee Comments: none

Drill/Exercise Performance



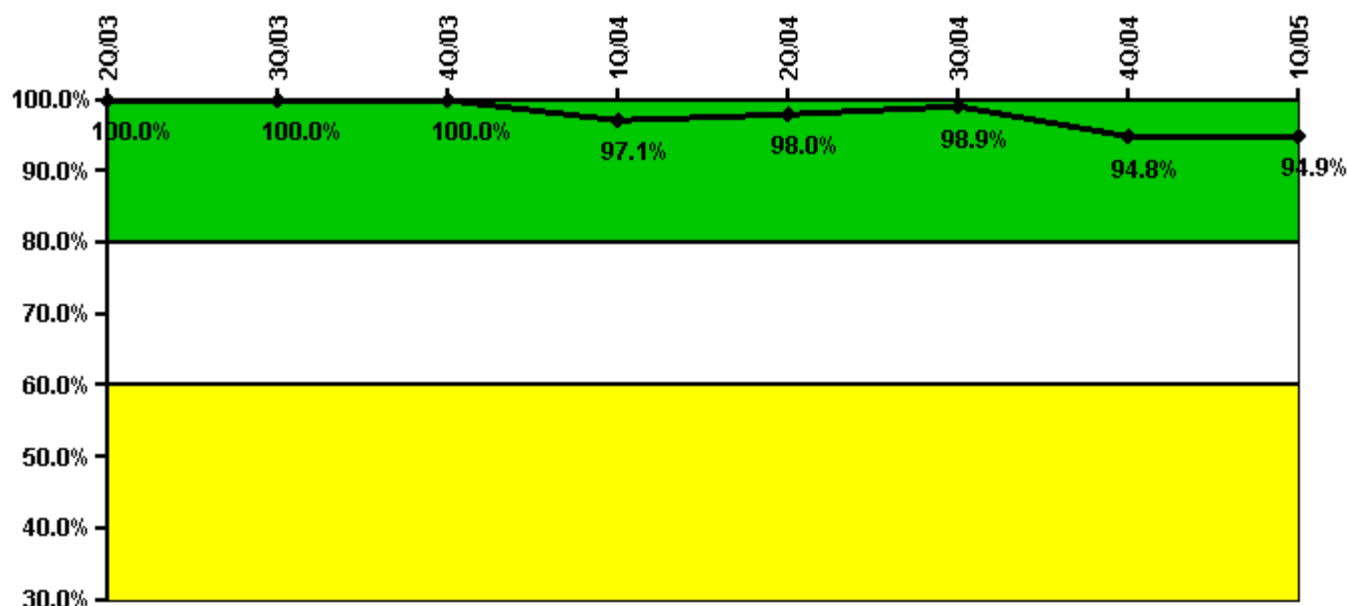
Thresholds: White < 90.0% Yellow < 70.0%

Notes

Drill/Exercise Performance	2Q/03	3Q/03	4Q/03	1Q/04	2Q/04	3Q/04	4Q/04	1Q/05
Successful opportunities	8.0	33.0	102.0	0	2.0	71.0	34.0	0
Total opportunities	8.0	34.0	103.0	0	2.0	74.0	36.0	0
Indicator value	95.7%	95.9%	97.7%	97.7%	98.2%	97.9%	97.4%	97.3%

Licensee Comments: none

ERO Drill Participation



Thresholds: White < 80.0% Yellow < 60.0%

Notes

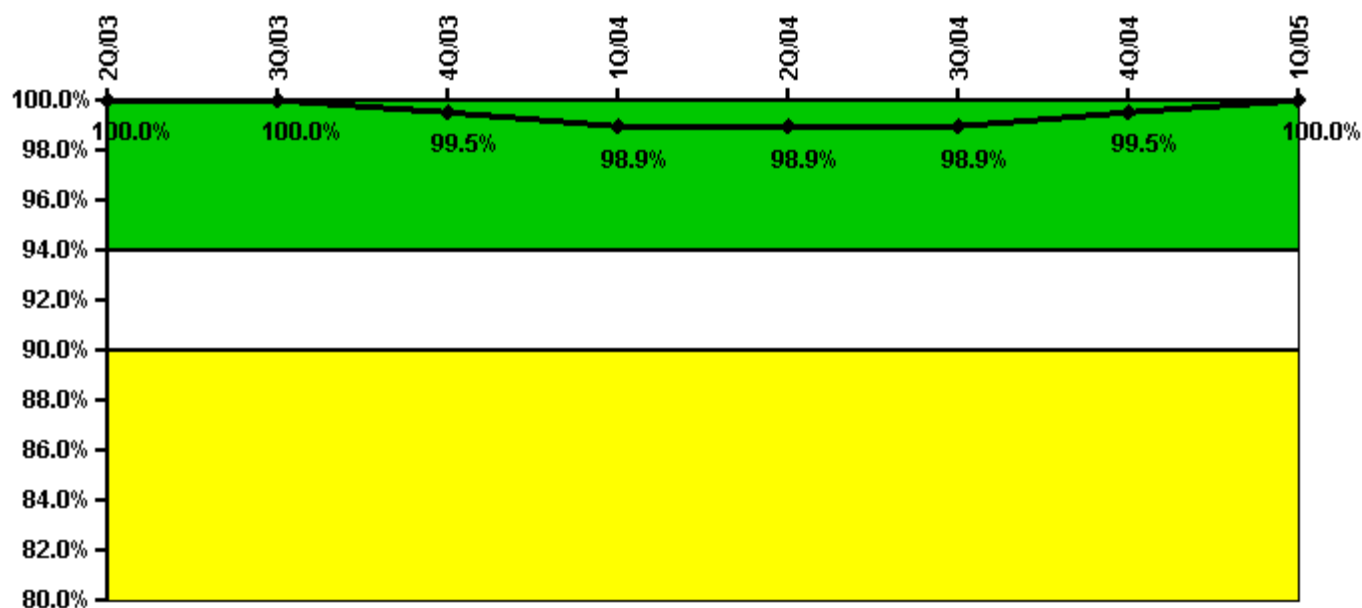
ERO Drill Participation	2Q/03	3Q/03	4Q/03	1Q/04	2Q/04	3Q/04	4Q/04	1Q/05
Participating Key personnel	101.0	100.0	108.0	100.0	97.0	91.0	91.0	93.0
Total Key personnel	101.0	100.0	108.0	103.0	99.0	92.0	96.0	98.0
Indicator value	100.0%	100.0%	100.0%	97.1%	98.0%	98.9%	94.8%	94.9%

Licensee Comments:

4Q/04: September through December 2004 drill participation and exercise performance data slightly revised for individuals on special assignment/illness. Training and EP databases linkages enhanced to ensure proper tracking. Color unaffected.

3Q/04: September through December 2004 drill participation and exercise performance data slightly revised for individuals on special assignment/illness. Training and EP databases linkages enhanced to ensure proper tracking. Color unaffected.

Alert & Notification System



Thresholds: White < 94.0% Yellow < 90.0%

Notes

Alert & Notification System	2Q/03	3Q/03	4Q/03	1Q/04	2Q/04	3Q/04	4Q/04	1Q/05
Successful siren-tests	45	45	47	47	45	45	51	48
Total sirens-tests	45	45	48	48	45	45	51	48
Indicator value	100.0%	100.0%	99.5%	98.9%	98.9%	98.9%	99.5%	100.0%

Licensee Comments: none

Occupational Exposure Control Effectiveness



Thresholds: White > 2.0 Yellow > 5.0

Notes

Occupational Exposure Control Effectiveness	2Q/03	3Q/03	4Q/03	1Q/04	2Q/04	3Q/04	4Q/04	1Q/05
High radiation area occurrences	0	0	0	0	0	0	0	0
Very high radiation area occurrences	0	0	0	0	0	0	0	0
Unintended exposure occurrences	0	0	0	0	0	0	0	0
Indicator value	0	0	0	0	0	0	0	0

Licensee Comments: none

RETS/ODCM Radiological Effluent



Thresholds: White > 1.0 Yellow > 3.0

Notes

RETS/ODCM Radiological Effluent	2Q/03	3Q/03	4Q/03	1Q/04	2Q/04	3Q/04	4Q/04	1Q/05
RETS/ODCM occurrences	0	0	0	0	0	0	0	0
Indicator value	0	0	0	0	0	0	0	0

Licensee Comments: none

[Physical Protection](#) information not publicly available.

▲ [Action Matrix Summary](#) | [Inspection Findings Summary](#) | [PI Summary](#) | [Reactor Oversight Process](#)

Last Modified: June 17, 2005