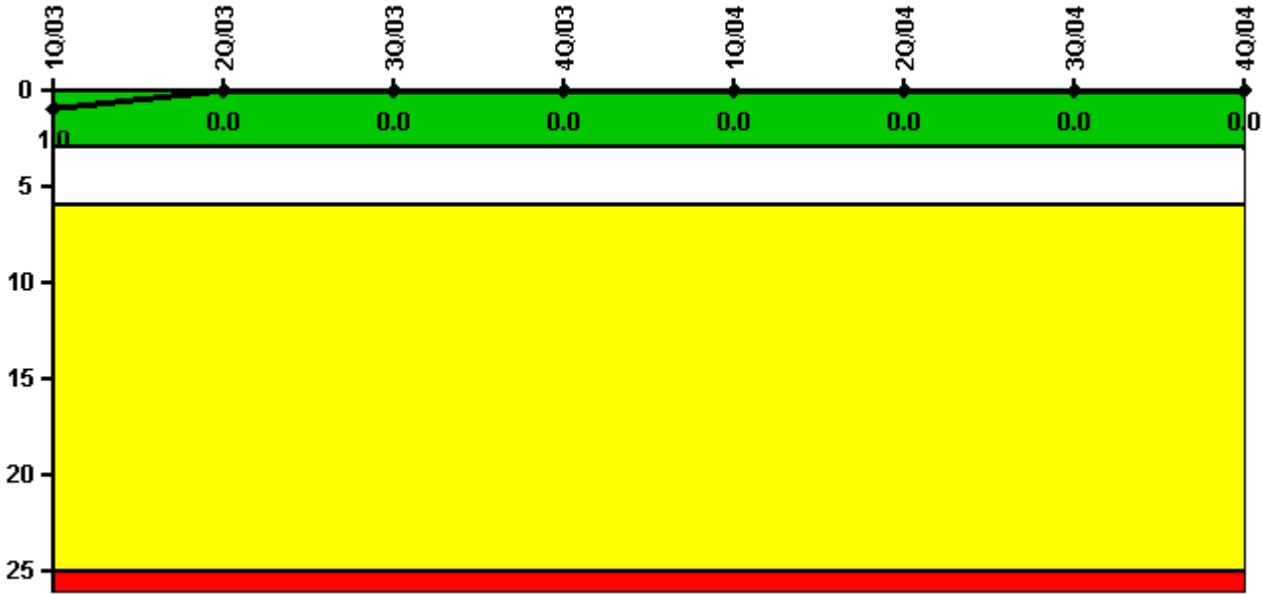


Diablo Canyon 1

4Q/2004 Performance Indicators

Licensee's General Comments: none

Unplanned Scrams per 7000 Critical Hrs



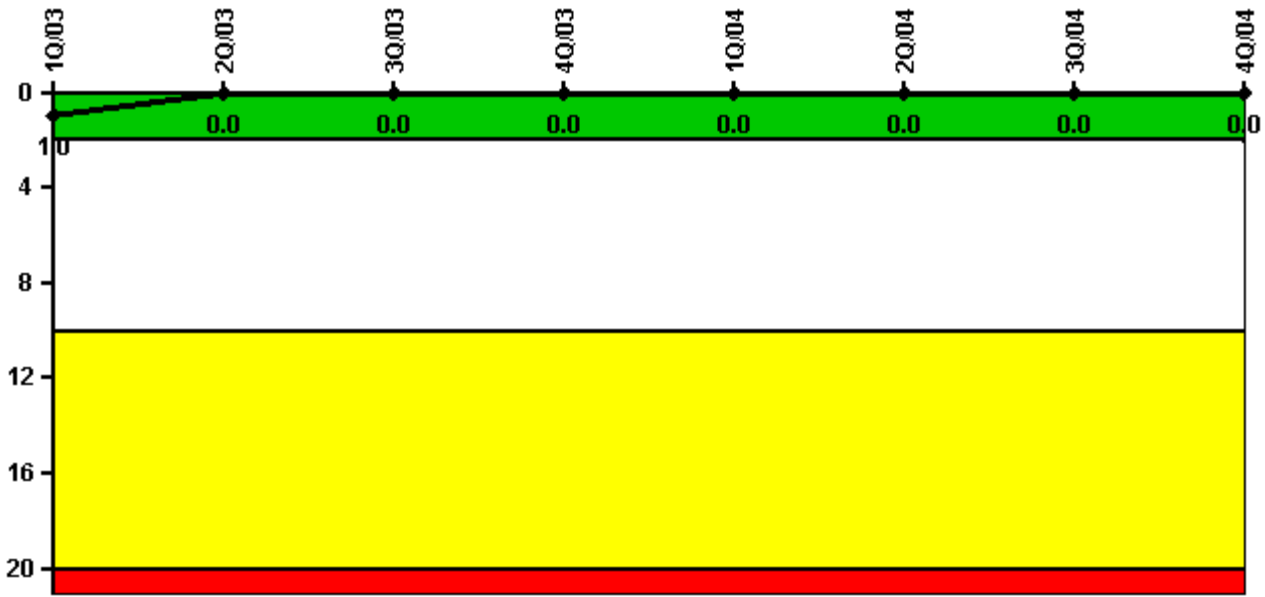
Thresholds: White > 3.0 Yellow > 6.0 Red > 25.0

Notes

Unplanned Scrams per 7000 Critical Hrs	1Q/03	2Q/03	3Q/03	4Q/03	1Q/04	2Q/04	3Q/04	4Q/04
Unplanned scrams	0	0	0	0	0	0	0	0
Critical hours	2160.0	2183.0	2208.0	2209.0	1947.5	677.1	2167.8	2209.0
Indicator value	1.0	0	0	0	0	0	0	0

Licensee Comments: none

Scrams with Loss of Normal Heat Removal



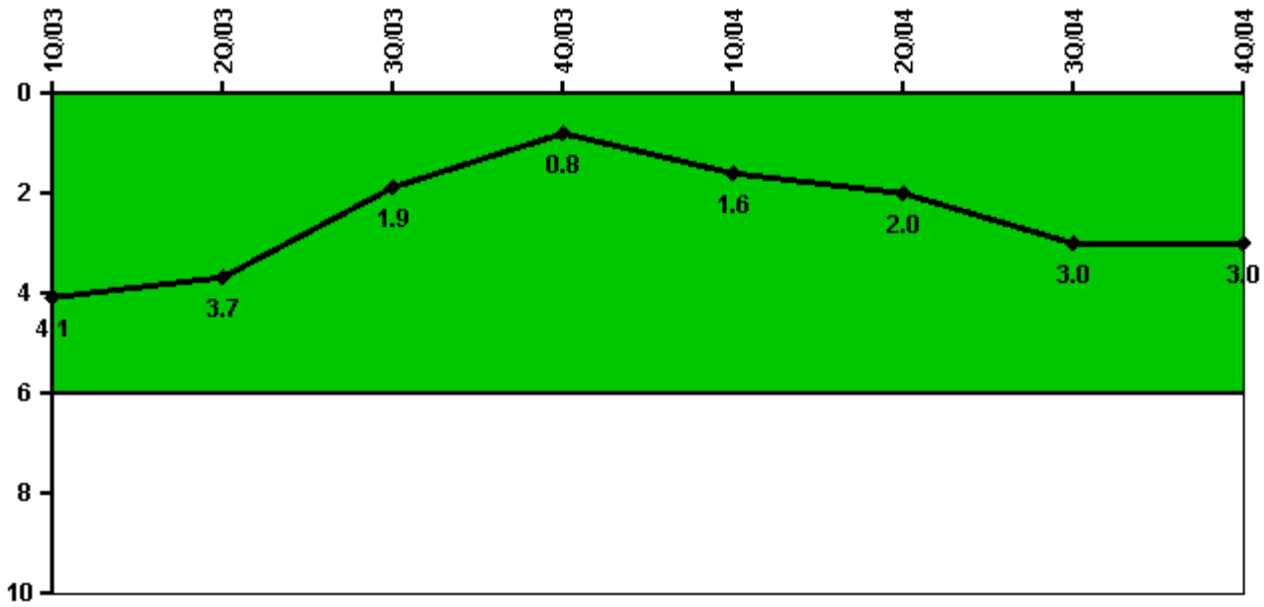
Thresholds: White > 2.0 Yellow > 10.0 Red > 20.0

Notes

Scrams with Loss of Normal Heat Removal	1Q/03	2Q/03	3Q/03	4Q/03	1Q/04	2Q/04	3Q/04	4Q/04
Scrams	0	0	0	0	0	0	0	0
Indicator value	1.0	0	0	0	0	0	0	0

Licensee Comments: none

Unplanned Power Changes per 7000 Critical Hrs



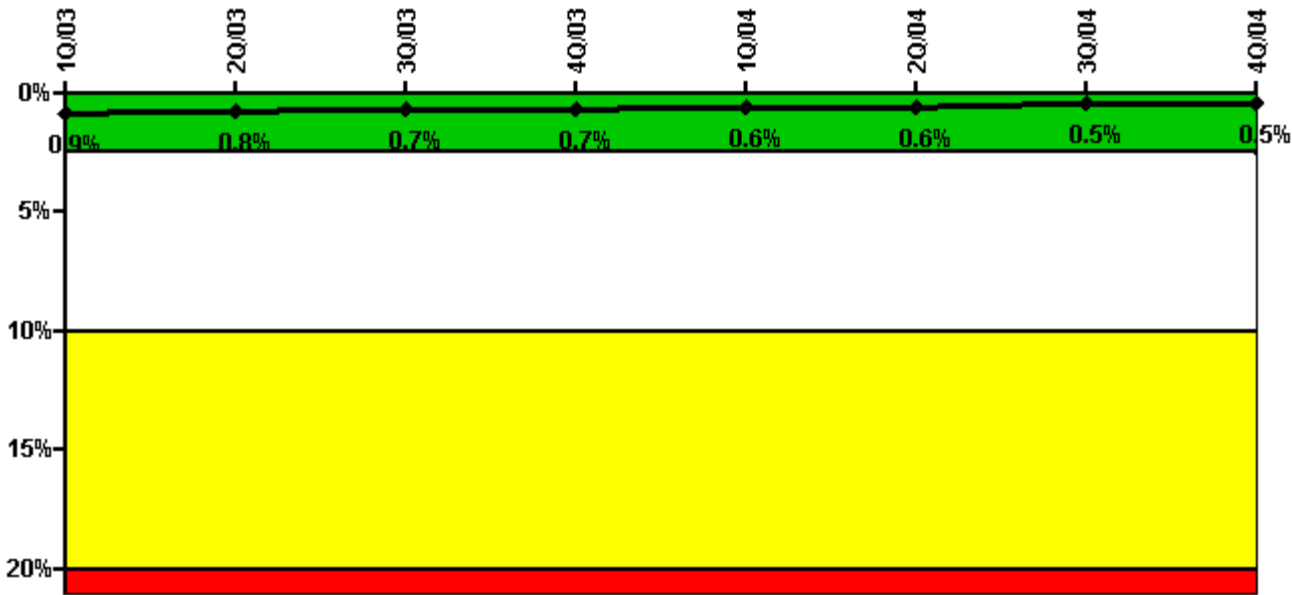
Thresholds: White > 6.0

Notes

Unplanned Power Changes per 7000 Critical Hrs	1Q/03	2Q/03	3Q/03	4Q/03	1Q/04	2Q/04	3Q/04	4Q/04
Unplanned power changes	0	1.0	0	0	1.0	1.0	1.0	0
Critical hours	2160.0	2183.0	2208.0	2209.0	1947.5	677.1	2167.8	2209.0
Indicator value	4.1	3.7	1.9	0.8	1.6	2.0	3.0	3.0

Licensee Comments: none

Safety System Unavailability, Emergency AC Power, >2EDG



Thresholds: White > 2.5% Yellow > 10.0% Red > 20.0%

Notes

Safety System Unavailability, Emergency AC Power, >2EDG	1Q/03	2Q/03	3Q/03	4Q/03	1Q/04	2Q/04	3Q/04	4Q/04
Train 1								
Planned unavailable hours	0	0	0	0	0	1.47	1.30	0
Unplanned unavailable hours	0	0	15.50	0	0	0	2.20	0
Fault exposure hours	0	0	0	0	0	0	0	0
Effective Reset hours	0	0	0	0	0	0	0	0
Required hours	2160.00	2183.00	2208.00	2209.00	2184.00	2183.00	2208.00	2209.00
Train 2								
Planned unavailable hours	3.74	3.08	18.63	6.48	13.22	3.80	0	3.31
Unplanned unavailable hours	0	0.20	4.90	0.25	0	0	0	0
Fault exposure hours	0	0	0	0	0	0	0	0
Effective Reset hours	0	0	0	0	0	0	0	0
Required hours	2160.00	2183.00	2208.00	2209.00	2184.00	2183.00	2208.00	2209.00
Train 3								
Planned unavailable hours	1.45	2.80	1.55	5.00	1.52	8.74	3.15	2.33
Unplanned unavailable hours	120.30	28.90	2.90	0	0	0	0	0
Fault exposure hours	0	0	0	0	0	0	0	0
Effective Reset hours	0	0	0	0	0	0	0	0
Required hours	2160.00	2183.00	2208.00	2209.00	2184.00	2183.00	2208.00	2209.00
Indicator value	0.9%	0.8%	0.7%	0.7%	0.6%	0.6%	0.5%	0.5%

Licensee Comments:

2Q/04: January 2005: 1.88 and 1.32 of Planned Unavailable Hours added to the last month of this quarter for Train 2 and Train 3, respectively. These additional hours were accrued in this quarter during Solid State Protection System (SSPS) testing and identified by Diablo Canyon during a review of previously submitted safety system unavailability data. This correction does not affect the color of the performance indicator.

1Q/04: January 2005: 1.65 and 1.52 of Planned Unavailable Hours added to the last month of this quarter for Train 2 and

Train 3, respectively. These additional hours were accrued in this quarter during Solid State Protection System (SSPS) testing and identified by Diablo Canyon during a review of previously submitted safety system unavailability data. This correction does not affect the color of the performance indicator.

4Q/03: January 2005: 6.48 and 5.0 of Planned Unavailable Hours added to the last month of the 4th quarter 2003 for Train 2 and Train 3, respectively. These additional hours were accrued during Solid State Protection System testing in this quarter and identified by Diablo Canyon during a review of previously submitted safety system unavailability data. This correction does not affect the color of the performance indicator.

3Q/03: January 2005: 4.23 and 1.55 of Planned Unavailable Hours added to the last month of this quarter for Train 2 and Train 3, respectively. These additional hours were accrued in this quarter during Solid State Protection System (SSPS) testing and identified by Diablo Canyon during a review of previously submitted safety system unavailability data. This correction does not affect the color of the performance indicator.

2Q/03: January 2005: 3.08 and 2.8 of Planned Unavailable Hours added to the last month of this quarter for Train 2 and Train 3, respectively. These additional hours were accrued in this quarter during Solid State Protection System (SSPS) testing and identified by Diablo Canyon during a review of previously submitted safety system unavailability data. This correction does not affect the color of the performance indicator.

1Q/03: January 2005: 3.74 and 1.45 of Planned Unavailable Hours added to the last month of this quarter for Train 2 and Train 3, respectively. These additional hours were accrued in this quarter during Solid State Protection System (SSPS) testing and identified by Diablo Canyon during a review of previously submitted safety system unavailability data. This correction does not affect the color of the performance indicator.

4Q/02: January 2005: 0.0 and 1.23 of Planned Unavailable Hours added to the last month of this quarter for Train 2 and Train 3, respectively. These additional hours were accrued in this quarter during Solid State Protection System (SSPS) testing and identified by Diablo Canyon during a review of previously submitted safety system unavailability data. This correction does not affect the color of the performance indicator.

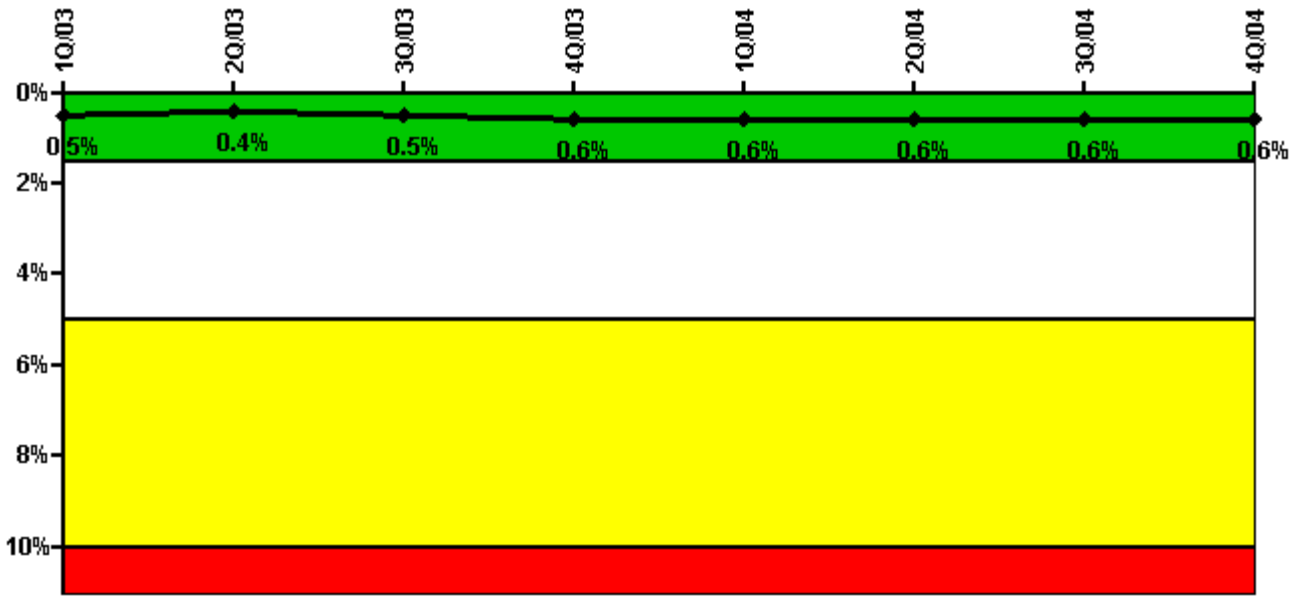
3Q/02: Change to clarify that EDG 3 for Unit 1 was not Fault Exposure hours but T/2 Fault Exposure hours. January 2005: 1.22 and 1.43 of Planned Unavailable Hours added to the last month of this quarter for Train 2 and Train 3, respectively. These additional hours were accrued in this quarter during Solid State Protection System (SSPS) testing and identified by Diablo Canyon during a review of previously submitted safety system unavailability data. This correction does not affect the color of the performance indicator.

2Q/02: January 2005: 1.5 and 2.68 of Planned Unavailable Hours added to the last month of this quarter for Train 2 and Train 3, respectively. These additional hours were accrued in this quarter during Solid State Protection System (SSPS) testing and identified by Diablo Canyon during a review of previously submitted safety system unavailability data. This correction does not affect the color of the performance indicator.

1Q/02: January 2005: 2.78 and 1.37 of Planned Unavailable Hours added to the last month of this quarter for Train 2 and Train 3, respectively. These additional hours were accrued in this quarter during Solid State Protection System (SSPS) testing and identified by Diablo Canyon during a review of previously submitted safety system unavailability data. This correction does not affect the color of the performance indicator.

4Q/01: January 2005: 5.88 and 2.68 of Planned Unavailable Hours added to the last month of this quarter for Train 2 and Train 3, respectively. These additional hours were accrued in this quarter during Solid State Protection System (SSPS) testing and identified by Diablo Canyon during a review of previously submitted safety system unavailability data. This correction does not affect the color of the performance indicator.

Safety System Unavailability, High Pressure Injection System (HPSI)



Thresholds: White > 1.5% Yellow > 5.0% Red > 10.0%

Notes

Safety System Unavailability, High Pressure Injection System (HPSI)	1Q/03	2Q/03	3Q/03	4Q/03	1Q/04	2Q/04	3Q/04	4Q/04
Train 1								
Planned unavailable hours	1.45	2.80	89.05	5.00	13.52	1.32	3.15	14.65
Unplanned unavailable hours	0	0	0	0	0	0	0	0.33
Fault exposure hours	0	0	0	0	0	0	0	0
Effective Reset hours	0	0	0	0	0	0	0	0
Required hours	2160.00	2183.00	2208.00	2209.00	1947.50	677.10	2167.80	2209.00
Train 2								
Planned unavailable hours	17.24	3.08	17.13	15.91	11.23	1.88	18.03	3.31
Unplanned unavailable hours	0	0	0	0	0	0	0	0.33
Fault exposure hours	0	0	0	0	0	0	0	0
Effective Reset hours	0	0	0	0	0	0	0	0
Required hours	2160.00	2183.00	2208.00	2209.00	1947.50	677.10	2167.80	2209.00
Train 3								
Planned unavailable hours	1.85	17.10	1.95	17.59	2.53	1.81	14.00	2.92
Unplanned unavailable hours	0	0	1.90	12.58	0	0	0	0
Fault exposure hours	0	0	0	0	0	0	0	0
Effective Reset hours	0	0	0	0	0	0	0	0
Required hours	2160.00	2183.00	2208.00	2209.00	1947.50	677.10	2167.80	2209.00
Train 4								
Planned unavailable hours	20.34	3.18	14.33	6.48	2.37	2.26	0.08	3.38
Unplanned unavailable hours	0	0	1.80	0	0	19.88	0	0
Fault exposure hours	0	0	0	0	0	0	0	0
Effective Reset hours	0	0	0	0	0	0	0	0
Required hours	2160.00	2183.00	2208.00	2209.00	1947.50	677.10	2167.80	2209.00
Indicator value	0.5%	0.4%	0.5%	0.6%	0.6%	0.6%	0.6%	0.6%

Licensee Comments:

2Q/04: January 2005: 1.32, 1.88, 1.32 and 1.88 of Planned Unavailable Hours added to the last month of this quarter for Train 1, 2, 3 and 4, respectively. These additional hours were accrued in this quarter during Solid State Protection System (SSPS) testing and identified by Diablo Canyon during a review of previously submitted safety system unavailability data. This correction does not affect the color of the performance indicator.

1Q/04: January 2005: 1.52, 1.65, 1.52 and 1.65 of Planned Unavailable Hours added to the last month of this quarter for Train 1, 2, 3 and 4, respectively. These additional hours were accrued in this quarter during Solid State Protection System (SSPS) testing and identified by Diablo Canyon during a review of previously submitted safety system unavailability data. This correction does not affect the color of the performance indicator.

4Q/03: January 2005: 5.0, 6.48, 5.0, 6.48 of Planned Unavailable Hours added to the last month of this quarter for Train 1,2,3,4 respectively. These additional hours were accrued in this quarter during Solid State Protection System (SSPS) testing and identified by Diablo Canyon during a review of previously submitted safety system unavailability data. This correction does not affect the color of the performance indicator.

3Q/03: January 2005: 1.55, 4.23, 1.55 and 4.23 of Planned Unavailable Hours added to the last month of this quarter for Train 1, 2, 3 and 4, respectively. These additional hours were accrued in this quarter during Solid State Protection System (SSPS) testing and identified by Diablo Canyon during a review of previously submitted safety system unavailability data. This correction does not affect the color of the performance indicator.

2Q/03: January 2005: 2.8, 3.08, 2.8 and 3.08 of Planned Unavailable Hours added to the last month of this quarter for Train 1, 2, 3 and 4, respectively. These additional hours were accrued in this quarter during Solid State Protection System (SSPS) testing and identified by Diablo Canyon during a review of previously submitted safety system unavailability data. This correction does not affect the color of the performance indicator.

1Q/03: January 2005: 1.45, 3.74, 1.45 and 3.74 of Planned Unavailable Hours added to the last month of this quarter for Train 1, 2, 3 and 4, respectively. These additional hours were accrued in this quarter during Solid State Protection System (SSPS) testing and identified by Diablo Canyon during a review of previously submitted safety system unavailability data. This correction does not affect the color of the performance indicator.

4Q/02: January 2005: 1.23, 0.0, 1.23 and 0.0 of Planned Unavailable Hours added to the last month of this quarter for Train 1, 2, 3 and 4, respectively. These additional hours were accrued in this quarter during Solid State Protection System (SSPS) testing and identified by Diablo Canyon during a review of previously submitted safety system unavailability data. This correction does not affect the color of the performance indicator.

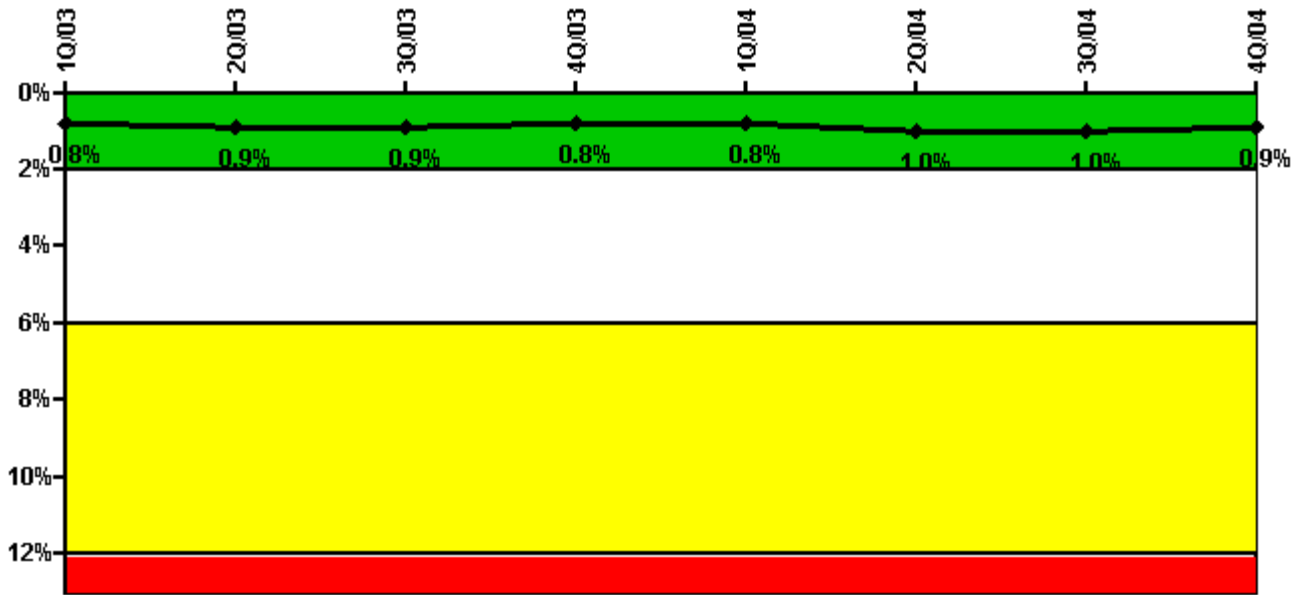
3Q/02: January 2005: 1.43, 1.22, 1.43 and 1.22 of Planned Unavailable Hours added to the last month of this quarter for Train 1, 2, 3 and 4, respectively. These additional hours were accrued in this quarter during Solid State Protection System (SSPS) testing and identified by Diablo Canyon during a review of previously submitted safety system unavailability data. This correction does not affect the color of the performance indicator.

2Q/02: January 2005: 2.68, 1.5, 2.68 and 1.5 of Planned Unavailable Hours added to the last month of this quarter for Train 1, 2, 3 and 4, respectively. These additional hours were accrued in this quarter during Solid State Protection System (SSPS) testing and identified by Diablo Canyon during a review of previously submitted safety system unavailability data. This correction does not affect the color of the performance indicator.

1Q/02: January 2005: 1.37, 2.78, 1.37 and 2.78 of Planned Unavailable Hours added to the last month of this quarter for Train 1, 2, 3 and 4, respectively. These additional hours were accrued in this quarter during Solid State Protection System (SSPS) testing and identified by Diablo Canyon during a review of previously submitted safety system unavailability data. This correction does not affect the color of the performance indicator.

4Q/01: January 2005: 2.68, 5.88, 2.68 and 5.88 of Planned Unavailable Hours added to the last month of this quarter for Train 1, 2, 3 and 4, respectively. These additional hours were accrued in this quarter during Solid State Protection System (SSPS) testing and identified by Diablo Canyon during a review of previously submitted safety system unavailability data. This correction does not affect the color of the performance indicator.

Safety System Unavailability, Heat Removal System (AFW)



Thresholds: White > 2.0% Yellow > 6.0% Red > 12.0%

Notes

Safety System Unavailability, Heat Removal System (AFW)	1Q/03	2Q/03	3Q/03	4Q/03	1Q/04	2Q/04	3Q/04	4Q/04
Train 1								
Planned unavailable hours	1.00	30.70	11.70	2.05	11.30	1.15	18.97	2.55
Unplanned unavailable hours	0	0	0	0	0	93.27	21.25	0
Fault exposure hours	0	0	0	0	0	0	0	0
Effective Reset hours	0	0	0	0	0	0	0	0
Required hours	2160.00	2183.00	2208.00	2209.00	1947.50	677.10	2167.80	2209.00
Train 2								
Planned unavailable hours	5.84	4.08	28.63	7.33	3.65	2.66	14.48	4.81
Unplanned unavailable hours	0	44.00	0	0	0	0	0	0
Fault exposure hours	0	0	0	0	0	0	0	0
Effective Reset hours	0	0	0	0	0	0	0	0
Required hours	2160.00	2183.00	2208.00	2209.00	1947.50	677.10	2167.80	2209.00
Train 3								
Planned unavailable hours	37.45	4.50	1.55	18.68	2.00	15.77	4.32	12.96
Unplanned unavailable hours	0	0	52.60	0	0	0	0	0
Fault exposure hours	0	0	0	0	0	0	0	0
Effective Reset hours	0	0	0	0	0	0	0	0
Required hours	2160.00	2183.00	2208.00	2209.00	1947.50	677.10	2167.80	2209.00
Indicator value	0.8%	0.9%	0.9%	0.8%	0.8%	1.0%	1.0%	0.9%

Licensee Comments:

2Q/04: January 2005: 1.88 and 1.32 of Planned Unavailable Hours added to the last month of this quarter for Train 2 and Train 3, respectively. These additional hours were accrued in this quarter during Solid State Protection System (SSPS) testing and identified by Diablo Canyon during a review of previously submitted safety system unavailability data. This correction does not affect the color of the performance indicator.

1Q/04: January 2005: 1.65 and 1.52 of Planned Unavailable Hours added to the last month of this quarter for Train 2 and

Train 3, respectively. These additional hours were accrued in this quarter during Solid State Protection System (SSPS) testing and identified by Diablo Canyon during a review of previously submitted safety system unavailability data. This correction does not affect the color of the performance indicator.

4Q/03: January 2005: 6.48 and 5.0 of Planned Unavailable Hours added to the last month of this quarter for Train 2 and Train 3, respectively. These additional hours were accrued in this quarter during Solid State Protection System (SSPS) testing and identified by Diablo Canyon during a review of previously submitted safety system unavailability data. This correction does not affect the color of the performance indicator.

3Q/03: January 2005: 4.23 and 1.55 of Planned Unavailable Hours added to the last month of this quarter for Train 2 and Train 3, respectively. These additional hours were accrued in this quarter during Solid State Protection System (SSPS) testing and identified by Diablo Canyon during a review of previously submitted safety system unavailability data. This correction does not affect the color of the performance indicator.

2Q/03: January 2005: 3.08 and 2.8 of Planned Unavailable Hours added to the last month of this quarter for Train 2 and Train 3, respectively. These additional hours were accrued in this quarter during Solid State Protection System (SSPS) testing and identified by Diablo Canyon during a review of previously submitted safety system unavailability data. This correction does not affect the color of the performance indicator.

1Q/03: January 2005: 3.74 and 1.45 of Planned Unavailable Hours added to the last month of this quarter for Train 2 and Train 3, respectively. These additional hours were accrued in this quarter during Solid State Protection System (SSPS) testing and identified by Diablo Canyon during a review of previously submitted safety system unavailability data. This correction does not affect the color of the performance indicator.

4Q/02: January 2005: 0.0 and 1.23 of Planned Unavailable Hours added to the last month of this quarter for Train 2 and Train 3, respectively. These additional hours were accrued in this quarter during Solid State Protection System (SSPS) testing and identified by Diablo Canyon during a review of previously submitted safety system unavailability data. This correction does not affect the color of the performance indicator.

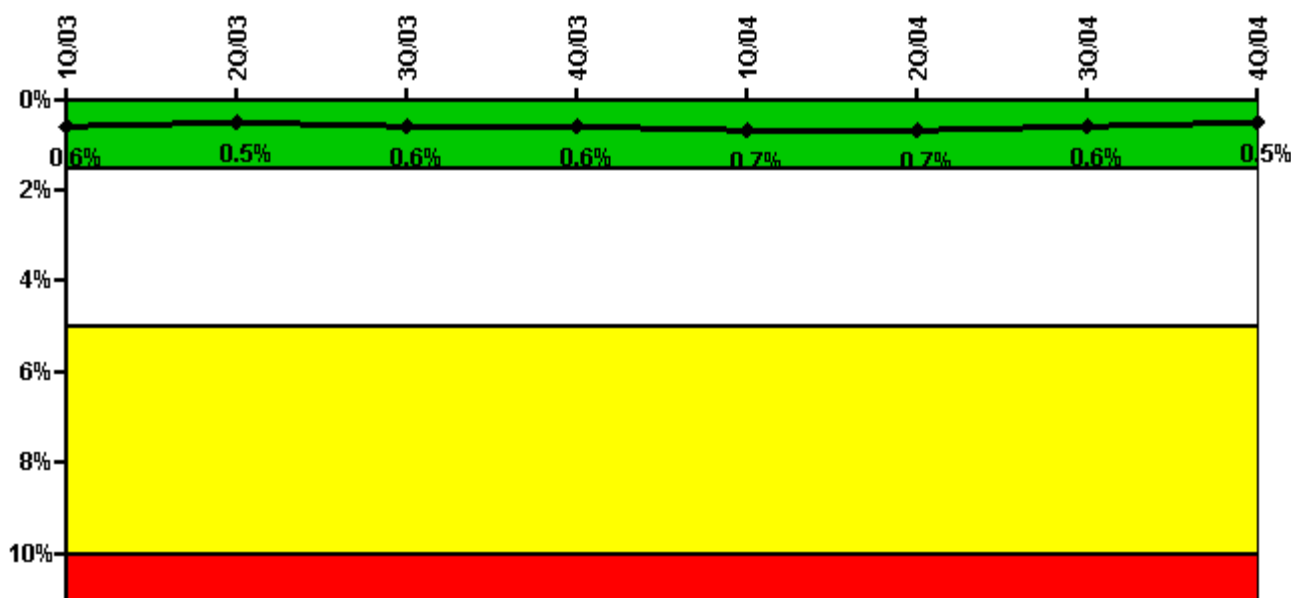
3Q/02: January 2005: 1.22 and 1.43 of Planned Unavailable Hours added to the last month of this quarter for Train 2 and Train 3, respectively. These additional hours were accrued in this quarter during Solid State Protection System (SSPS) testing and identified by Diablo Canyon during a review of previously submitted safety system unavailability data. This correction does not affect the color of the performance indicator.

2Q/02: January 2005: 1.5 and 2.68 of Planned Unavailable Hours added to the last month of this quarter for Train 2 and Train 3, respectively. These additional hours were accrued in this quarter during Solid State Protection System (SSPS) testing and identified by Diablo Canyon during a review of previously submitted safety system unavailability data. This correction does not affect the color of the performance indicator.

1Q/02: January 2005: 2.78 and 1.37 of Planned Unavailable Hours added to the last month of this quarter for Train 2 and Train 3, respectively. These additional hours were accrued in this quarter during Solid State Protection System (SSPS) testing and identified by Diablo Canyon during a review of previously submitted safety system unavailability data. This correction does not affect the color of the performance indicator.

4Q/01: January 2005: 5.88 and 2.68 of Planned Unavailable Hours added to the last month of this quarter for Train 2 and Train 3, respectively. These additional hours were accrued in this quarter during Solid State Protection System (SSPS) testing and identified by Diablo Canyon during a review of previously submitted safety system unavailability data. This correction does not affect the color of the performance indicator.

Safety System Unavailability, Residual Heat Removal System



Thresholds: White > 1.5% Yellow > 5.0% Red > 10.0%

Notes

Safety System Unavailability, Residual Heat Removal System	1Q/03	2Q/03	3Q/03	4Q/03	1Q/04	2Q/04	3Q/04	4Q/04
Train 1								
Planned unavailable hours	15.34	3.58	19.63	7.15	24.18	2.00	24.17	4.53
Unplanned unavailable hours	0	0	0	0	0	0	0	0
Fault exposure hours	0	0	0	0	0	0	0	0
Effective Reset hours	0	0	0	0	0	0	0	0
Required hours	2160.00	2183.00	2208.00	2209.00	2184.00	2183.00	2208.00	2209.00
Train 2								
Planned unavailable hours	28.15	2.90	12.65	6.30	24.39	1.32	17.00	3.18
Unplanned unavailable hours	0	0	0	0	0	0	0	0
Fault exposure hours	0	0	0	0	0	0	0	0
Effective Reset hours	0	0	0	0	0	0	0	0
Required hours	2160.00	2183.00	2208.00	2209.00	2184.00	2183.00	2208.00	2209.00
Indicator value	0.6%	0.5%	0.6%	0.6%	0.7%	0.7%	0.6%	0.5%

Licensee Comments:

2Q/04: January 2005: 1.88 and 1.32 of Planned Unavailable Hours added to the last month of this quarter for Train 1 and Train 2 respectively. These additional hours were accrued in this quarter during Solid State Protection System (SSPS) testing and identified by Diablo Canyon during a review of previously submitted safety system unavailability data. This correction does not affect the color of the performance indicator.

1Q/04: January 2005: 1.65 and 1.52 of Planned Unavailable Hours added to the last month of this quarter for Train 1 and Train 2, respectively. These additional hours were accrued in this quarter during Solid State Protection System (SSPS) testing and identified by Diablo Canyon during a review of previously submitted safety system unavailability data. This correction does not affect the color of the performance indicator.

4Q/03: January 2005: 6.48 and 5.0 of Planned Unavailable Hours added to the last month of this quarter for Train 1 and Train 2, respectively. These additional hours were accrued in this quarter during Solid State Protection System (SSPS) testing and identified by Diablo Canyon during a review of previously submitted safety system unavailability data. This correction does not affect the color of the performance indicator.

3Q/03: January 2005: 4.23 and 1.55 of Planned Unavailable Hours added to the last month of this quarter for Train 1 and Train 2, respectively. These additional hours were accrued in this quarter during Solid State Protection System (SSPS) testing and identified by Diablo Canyon during a review of previously submitted safety system unavailability data. This correction does not affect the color of the performance indicator.

2Q/03: January 2005: 3.08 and 2.8 of Planned Unavailable Hours added to the last month of this quarter for Train 1 and Train 2, respectively. These additional hours were accrued in this quarter during Solid State Protection System (SSPS) testing and identified by Diablo Canyon during a review of previously submitted safety system unavailability data. This correction does not affect the color of the performance indicator.

1Q/03: January 2005: 3.74 and 1.45 of Planned Unavailable Hours added to the last month of this quarter for Train 1 and Train 2, respectively. These additional hours were accrued in this quarter during Solid State Protection System (SSPS) testing and identified by Diablo Canyon during a review of previously submitted safety system unavailability data. This correction does not affect the color of the performance indicator.

4Q/02: January 2005: 0.0 and 1.23 of Planned Unavailable Hours added to the last month of this quarter for Train 1 and Train 2, respectively. These additional hours were accrued in this quarter during Solid State Protection System (SSPS) testing and identified by Diablo Canyon during a review of previously submitted safety system unavailability data. This correction does not affect the color of the performance indicator.

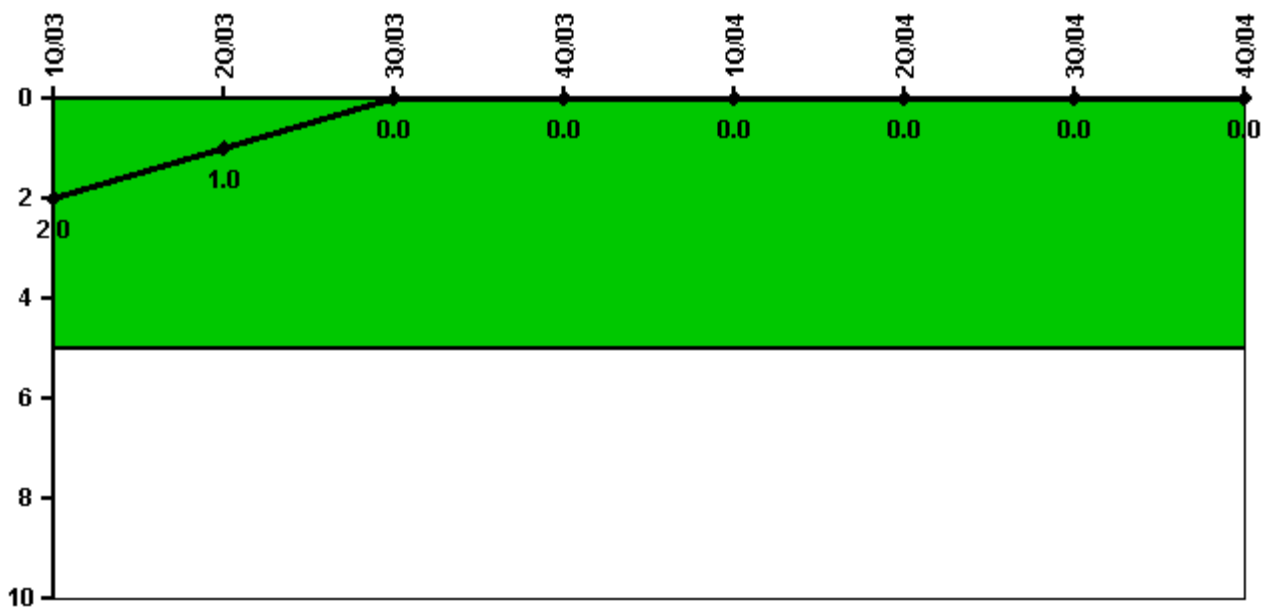
3Q/02: January 2005: 1.22 and 1.43 of Planned Unavailable Hours added to the last month of this quarter for Train 1 and Train 2, respectively. These additional hours were accrued in this quarter during Solid State Protection System (SSPS) testing and identified by Diablo Canyon during a review of previously submitted safety system unavailability data. This correction does not affect the color of the performance indicator.

2Q/02: January 2005: 1.5 and 2.68 of Planned Unavailable Hours added to the last month of this quarter for Train 1 and Train 2, respectively. These additional hours were accrued in this quarter during Solid State Protection System (SSPS) testing and identified by Diablo Canyon during a review of previously submitted safety system unavailability data. This correction does not affect the color of the performance indicator.

1Q/02: January 2005: 2.78 and 1.37 of Planned Unavailable Hours added to the last month of this quarter for Train 1 and Train 2, respectively. These additional hours were accrued in this quarter during Solid State Protection System (SSPS) testing and identified by Diablo Canyon during a review of previously submitted safety system unavailability data. This correction does not affect the color of the performance indicator.

4Q/01: January 2005: 5.88 and 2.68 of Planned Unavailable Hours added to the last month of this quarter for Train 1 and Train 2, respectively. These additional hours were accrued in this quarter during Solid State Protection System (SSPS) testing and identified by Diablo Canyon during a review of previously submitted safety system unavailability data. This correction does not affect the color of the performance indicator.

Safety System Functional Failures (PWR)



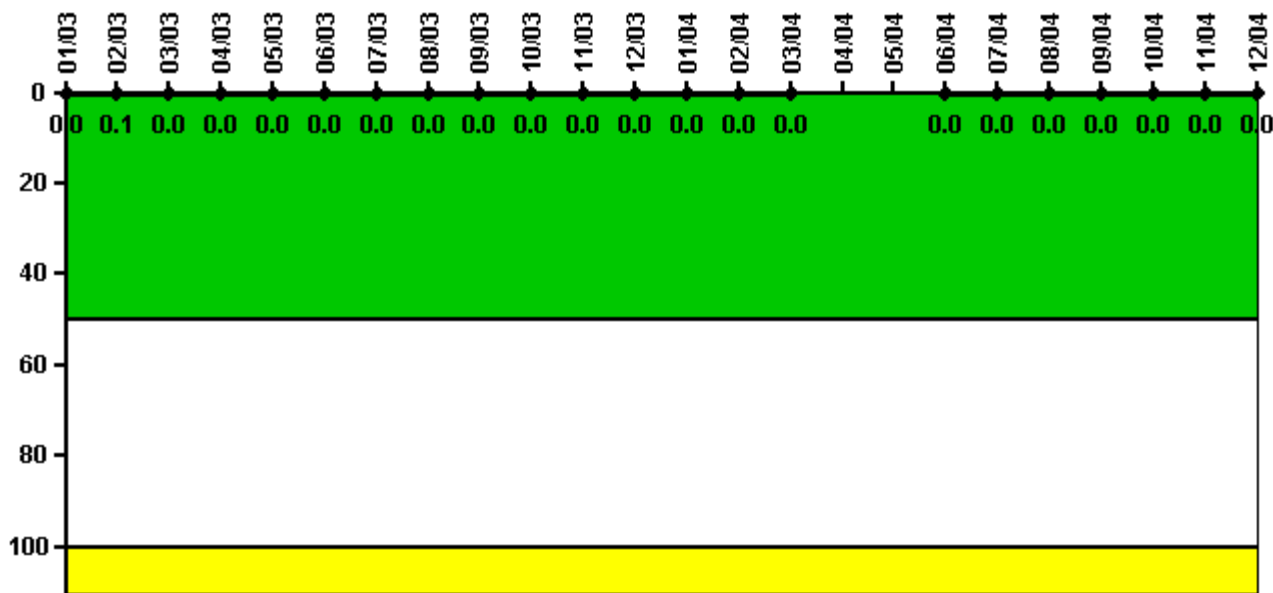
Thresholds: White > 5.0

Notes

Safety System Functional Failures (PWR)	1Q/03	2Q/03	3Q/03	4Q/03	1Q/04	2Q/04	3Q/04	4Q/04
Safety System Functional Failures	0	0	0	0	0	0	0	0
Indicator value	2	1	0	0	0	0	0	0

Licensee Comments: none

Reactor Coolant System Activity



Thresholds: White > 50.0 Yellow > 100.0

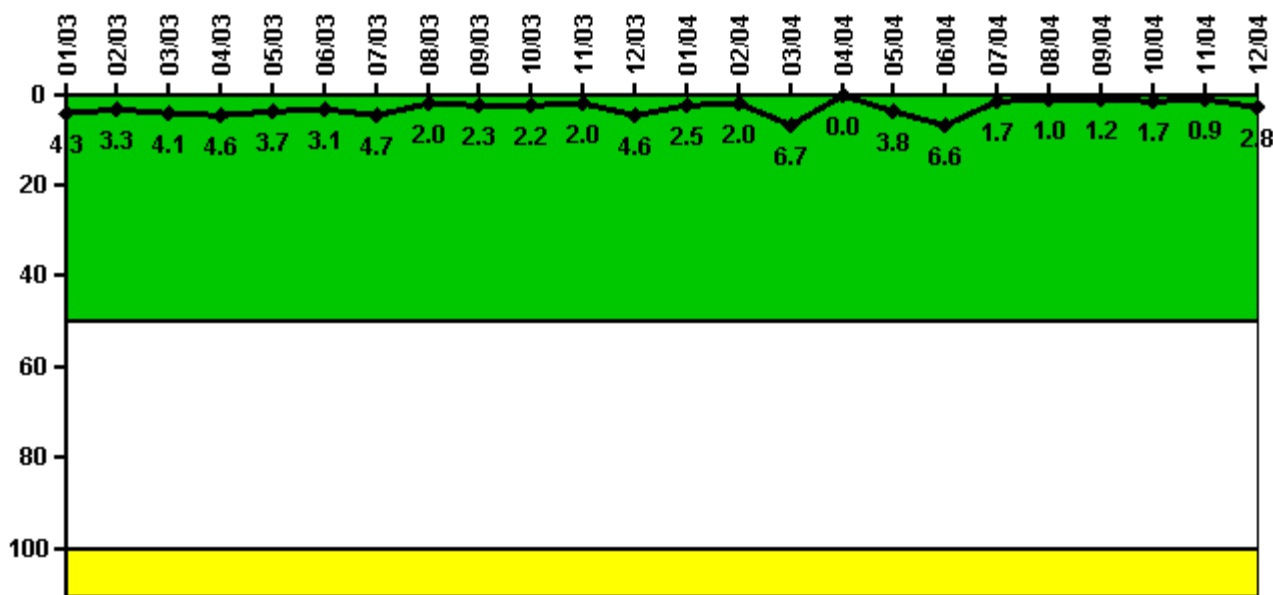
Notes

Reactor Coolant System Activity	1/03	2/03	3/03	4/03	5/03	6/03	7/03	8/03	9/03	10/03	11/03	12/03
Maximum activity	0.000253	0.000552	0.000255	0.000276	0.000275	0.000287	0.000281	0.000286	0.000307	0.000299	0.000290	0.000305
Technical specification limit	0.7	0.7	0.7	0.7	1.0	1.0	1.0	1.0	1.0	1.0	1.0	1.0
Indicator value	0	0.1	0	0	0	0	0	0	0	0	0	0

Reactor Coolant System Activity	1/04	2/04	3/04	4/04	5/04	6/04	7/04	8/04	9/04	10/04	11/04	12/04
Maximum activity	0.000316	0.000362	0.000274	N/A	N/A	0.000178	0.000184	0.000196	0.000208	0.000227	0.000316	0.000286
Technical specification limit	1.0	1.0	1.0	1.0	1.0	1.0	1.0	1.0	1.0	1.0	1.0	1.0
Indicator value	0	0	0	N/A	N/A	0	0	0	0	0	0	0

Licensee Comments: none

Reactor Coolant System Leakage



Thresholds: White > 50.0 Yellow > 100.0

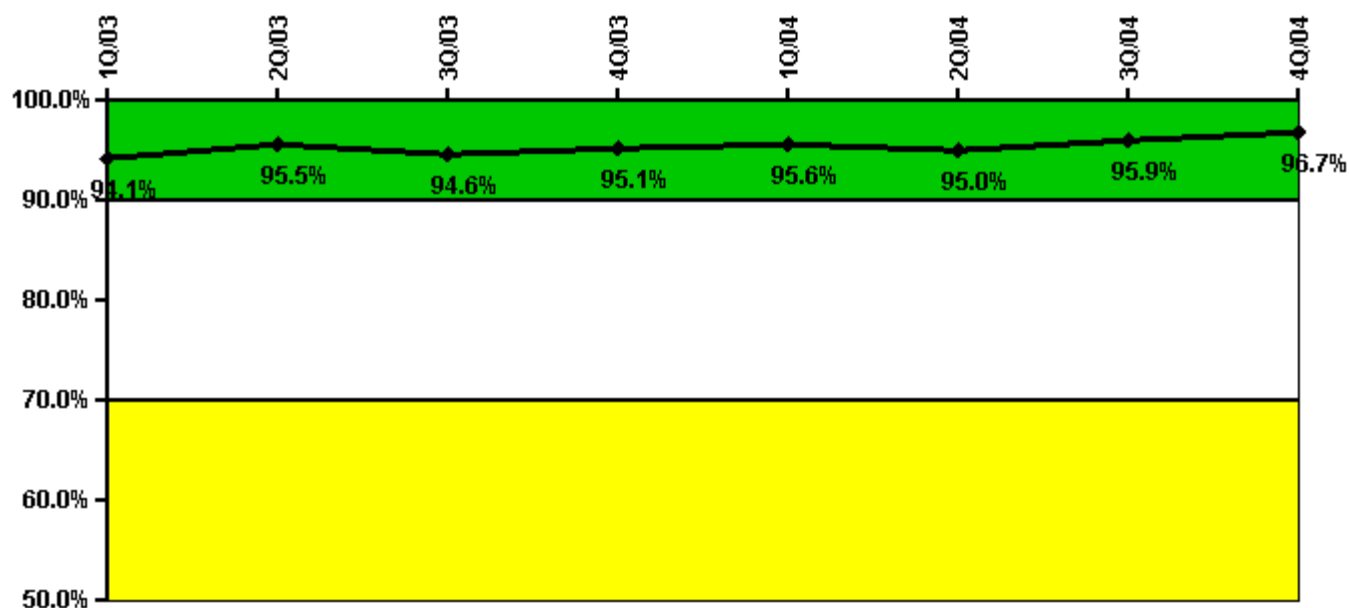
Notes

Reactor Coolant System Leakage	1/03	2/03	3/03	4/03	5/03	6/03	7/03	8/03	9/03	10/03	11/03	12/03
Maximum leakage	0.425	0.332	0.405	0.455	0.366	0.313	0.465	0.198	0.232	0.217	0.197	0.459
Technical specification limit	10.0	10.0	10.0	10.0	10.0	10.0	10.0	10.0	10.0	10.0	10.0	10.0
Indicator value	4.3	3.3	4.1	4.6	3.7	3.1	4.7	2.0	2.3	2.2	2.0	4.6

Reactor Coolant System Leakage	1/04	2/04	3/04	4/04	5/04	6/04	7/04	8/04	9/04	10/04	11/04	12/04
Maximum leakage	0.253	0.199	0.669	0	0.383	0.655	0.168	0.099	0.123	0.169	0.085	0.275
Technical specification limit	10.0	10.0	10.0	10.0	10.0	10.0	10.0	10.0	10.0	10.0	10.0	10.0
Indicator value	2.5	2.0	6.7	0	3.8	6.6	1.7	1.0	1.2	1.7	0.9	2.8

Licensee Comments: none

Drill/Exercise Performance



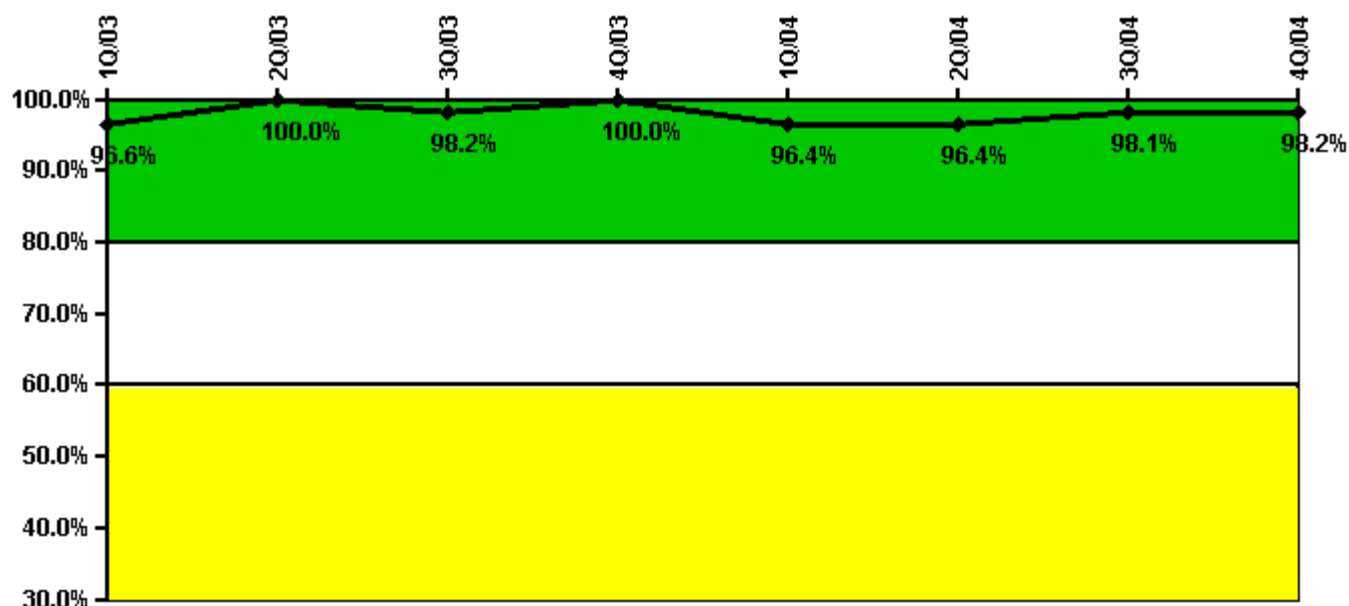
Thresholds: White < 90.0% Yellow < 70.0%

Notes

Drill/Exercise Performance	1Q/03	2Q/03	3Q/03	4Q/03	1Q/04	2Q/04	3Q/04	4Q/04
Successful opportunities	33.0	57.0	21.0	15.0	39.0	14.0	14.0	11.0
Total opportunities	33.0	58.0	23.0	15.0	41.0	15.0	14.0	12.0
Indicator value	94.1%	95.5%	94.6%	95.1%	95.6%	95.0%	95.9%	96.7%

Licensee Comments: none

ERO Drill Participation



Thresholds: White < 80.0% Yellow < 60.0%

Notes

ERO Drill Participation	1Q/03	2Q/03	3Q/03	4Q/03	1Q/04	2Q/04	3Q/04	4Q/04
Participating Key personnel	57.0	55.0	54.0	54.0	53.0	53.0	53.0	55.0
Total Key personnel	59.0	55.0	55.0	54.0	55.0	55.0	54.0	56.0
Indicator value	96.6%	100.0%	98.2%	100.0%	96.4%	96.4%	98.1%	98.2%

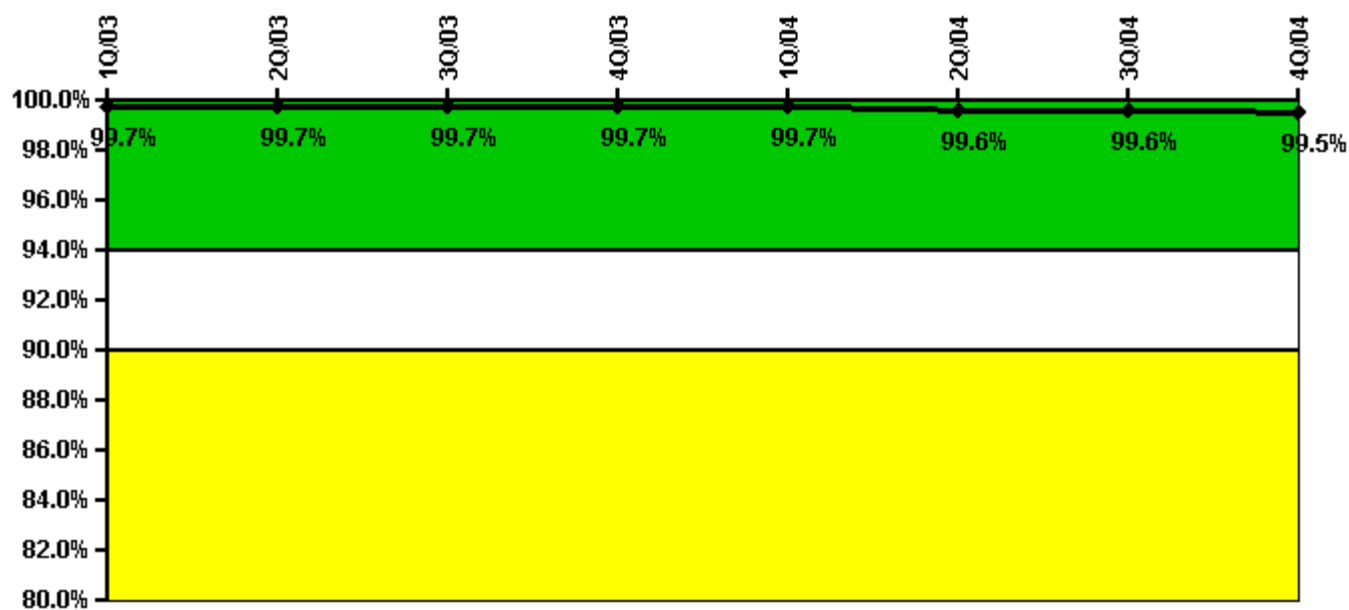
Licensee Comments:

3Q/04: January 2005: During review of previously submitted ERO Drill Participation data, it was noted that the number of key ERO members that have participated in a drill in previous 3 quarters needed to be reduced by 1. The reduction of 1 key ERO member in the PI calculation does NOT result in a change to the color of the PI.

2Q/04: January 2005: During review of previously submitted ERO Drill Participation data, it was noted that the number of key ERO members that have participated in a drill in previous 3 quarters needed to be reduced by 1. The reduction of 1 key ERO member in the PI calculation does NOT result in a change to the color of the PI.

1Q/04: January 2005: During review of previously submitted ERO Drill Participation data, it was noted that the number of key ERO members that have participated in a drill in previous 3 quarters needed to be reduced by 1. The reduction of 1 key ERO member in the PI calculation does NOT result in a change to the color of the PI.

Alert & Notification System



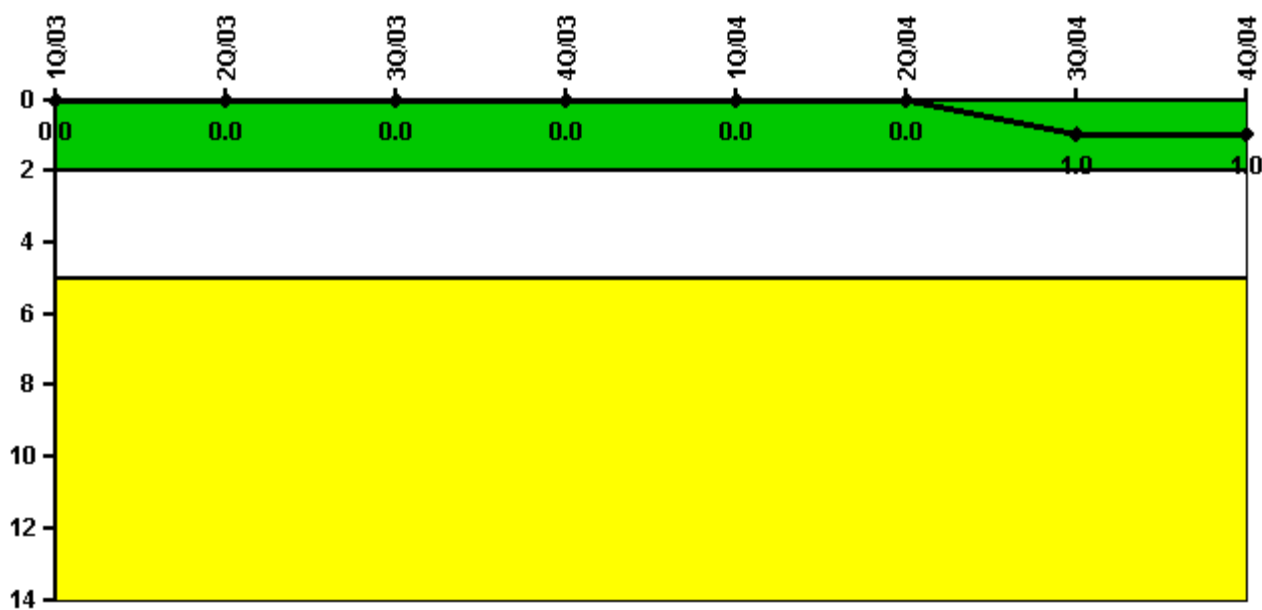
Thresholds: White < 94.0% Yellow < 90.0%

Notes

Alert & Notification System	1Q/03	2Q/03	3Q/03	4Q/03	1Q/04	2Q/04	3Q/04	4Q/04
Successful siren-tests	913	915	1174	1046	1044	1043	1303	911
Total sirens-tests	917	917	1179	1048	1048	1048	1310	917
Indicator value	99.7%	99.7%	99.7%	99.7%	99.7%	99.6%	99.6%	99.5%

Licensee Comments: none

Occupational Exposure Control Effectiveness



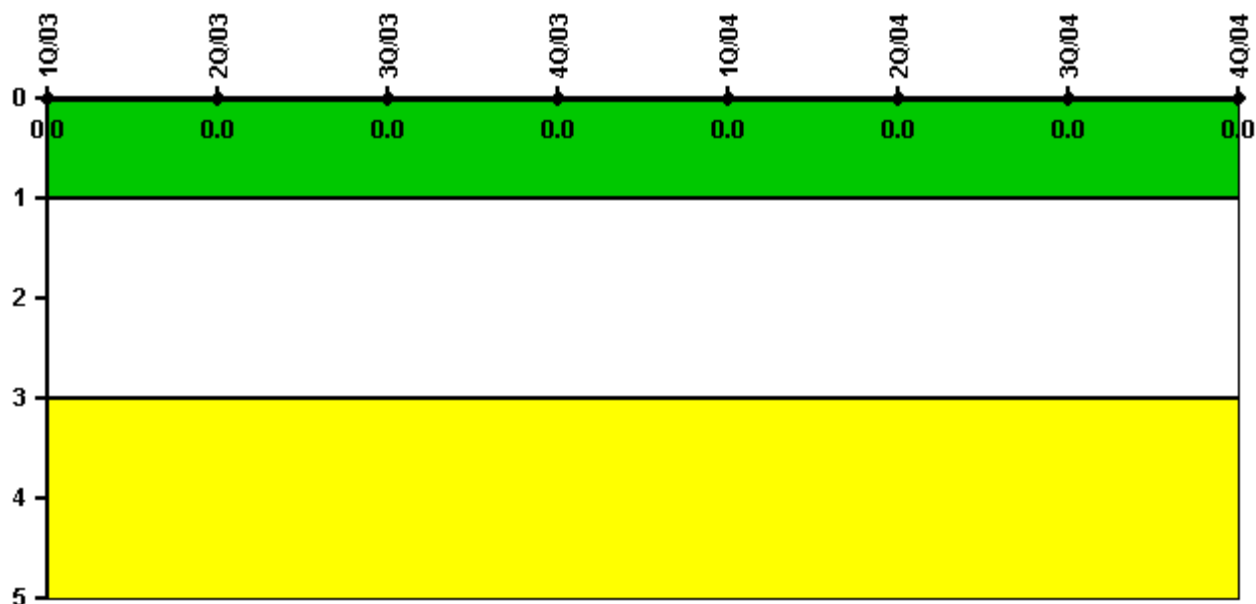
Thresholds: White > 2.0 Yellow > 5.0

Notes

Occupational Exposure Control Effectiveness	1Q/03	2Q/03	3Q/03	4Q/03	1Q/04	2Q/04	3Q/04	4Q/04
High radiation area occurrences	0	0	0	0	0	0	1	0
Very high radiation area occurrences	0	0	0	0	0	0	0	0
Unintended exposure occurrences	0	0	0	0	0	0	0	0
Indicator value	0	0	0	0	0	0	1	1

Licensee Comments: none

RETS/ODCM Radiological Effluent



Thresholds: White > 1.0 Yellow > 3.0

Notes

RETS/ODCM Radiological Effluent	1Q/03	2Q/03	3Q/03	4Q/03	1Q/04	2Q/04	3Q/04	4Q/04
RETS/ODCM occurrences	0	0	0	0	0	0	0	0
Indicator value	0	0	0	0	0	0	0	0

Licensee Comments: none

[Physical Protection](#) information not publicly available.

▲ [Action Matrix Summary](#) | [Inspection Findings Summary](#) | [PI Summary](#) | [Reactor Oversight Process](#)

Last Modified: March 9, 2005