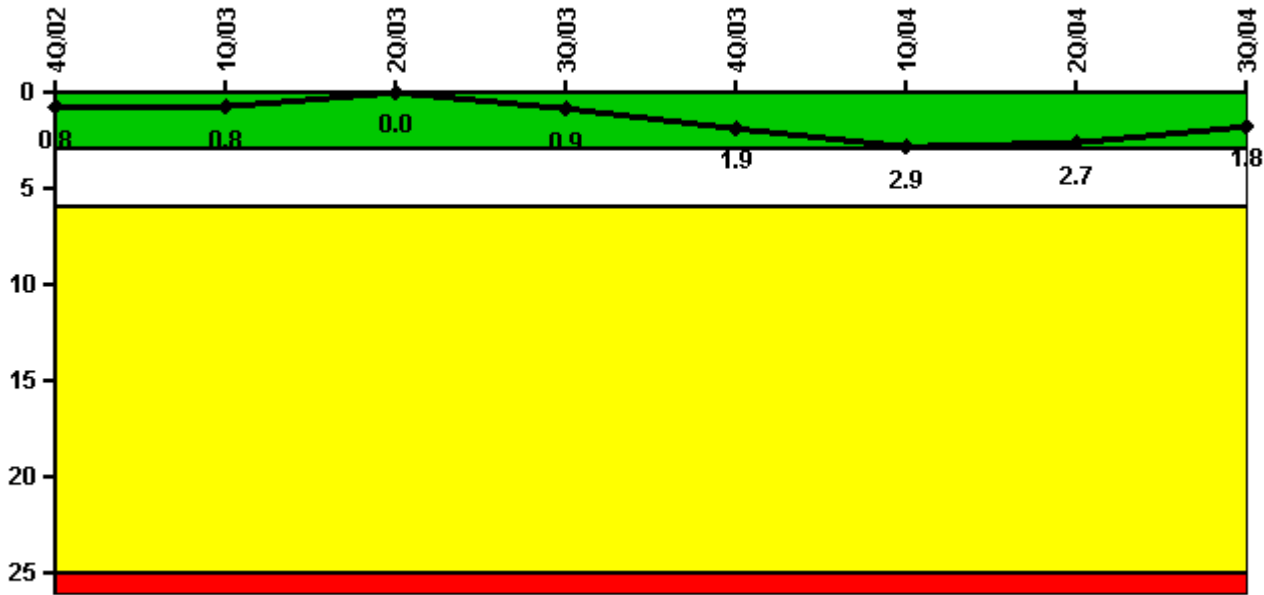


# Hope Creek 1

## 3Q/2004 Performance Indicators

Licensee's General Comments: MS02 An original design question was raised with the HPCI orifice plate. This issue was not capable of being discovered through a normal surveillance test. Therefore, in accordance with NEI 99-02, it is not included in the PI. It was reviewed via an SDP. MS05 - LER 354/2004-006

### Unplanned Scrams per 7000 Critical Hrs



Thresholds: White > 3.0 Yellow > 6.0 Red > 25.0

### Notes

Unplanned Scrams per 7000 Critical Hrs	4Q/02	1Q/03	2Q/03	3Q/03	4Q/03	1Q/04	2Q/04	3Q/04
Unplanned scrams	0	0	0	1.0	1.0	1.0	0	0
Critical hours	2209.0	1959.8	1537.6	2003.5	1909.2	1824.6	1994.6	2208.0
Indicator value	0.8	0.8	0	0.9	1.9	2.9	2.7	1.8

Licensee Comments: none

### Scrams with Loss of Normal Heat Removal



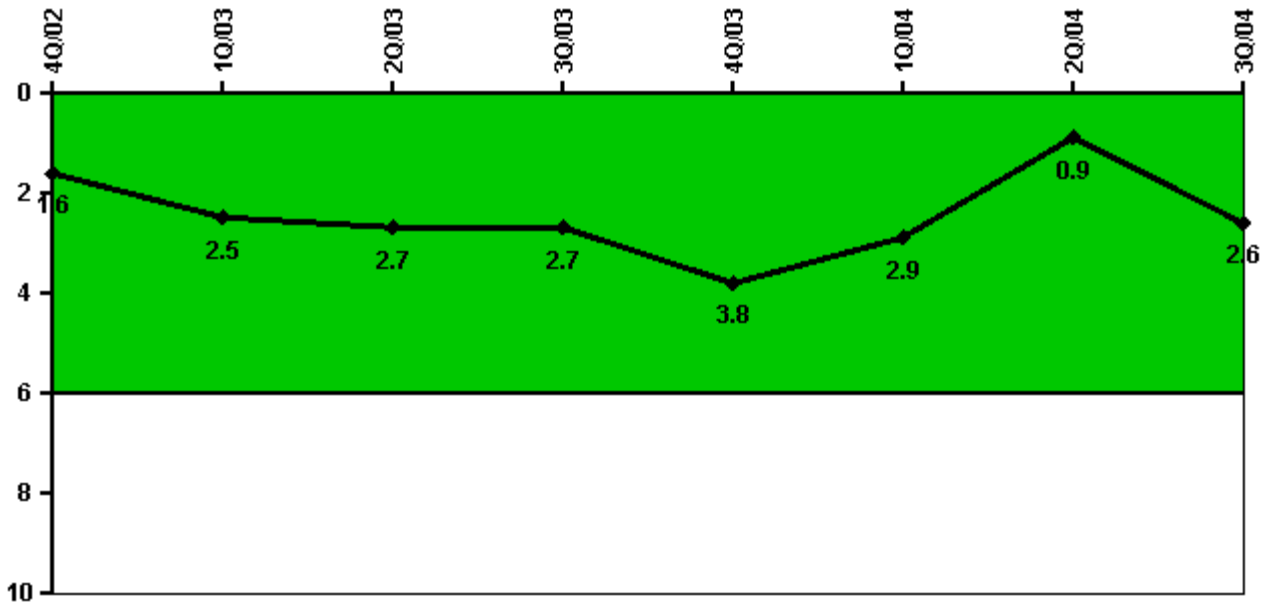
Thresholds: White > 2.0 Yellow > 10.0 Red > 20.0

#### Notes

Scrams with Loss of Normal Heat Removal	4Q/02	1Q/03	2Q/03	3Q/03	4Q/03	1Q/04	2Q/04	3Q/04
Scrams	0	0	0	0	0	0	0	0
Indicator value	0	0	0	0	0	0	0	0

Licensee Comments: none

### Unplanned Power Changes per 7000 Critical Hrs



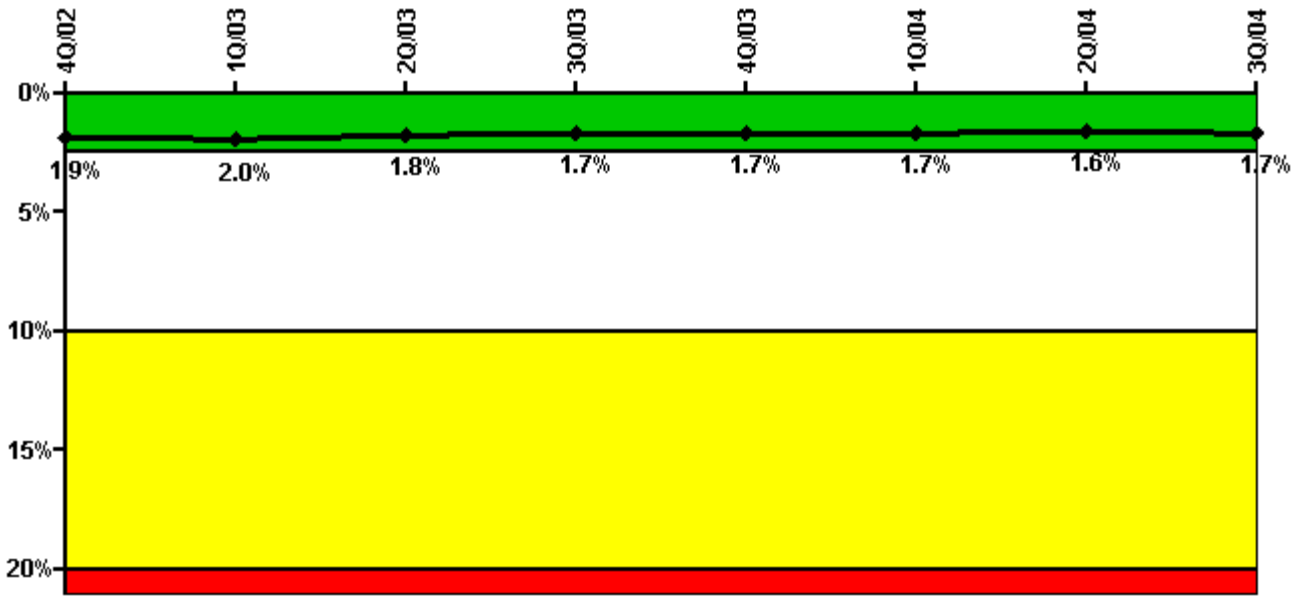
Thresholds: White > 6.0

#### Notes

Unplanned Power Changes per 7000 Critical Hrs	4Q/02	1Q/03	2Q/03	3Q/03	4Q/03	1Q/04	2Q/04	3Q/04
Unplanned power changes	0	1.0	2.0	0	1.0	0	0	2.0
Critical hours	2209.0	1959.8	1537.6	2003.5	1909.2	1824.6	1994.6	2208.0
<b>Indicator value</b>	<b>1.6</b>	<b>2.5</b>	<b>2.7</b>	<b>2.7</b>	<b>3.8</b>	<b>2.9</b>	<b>0.9</b>	<b>2.6</b>

Licensee Comments: none

### Safety System Unavailability, Emergency AC Power, >2EDG



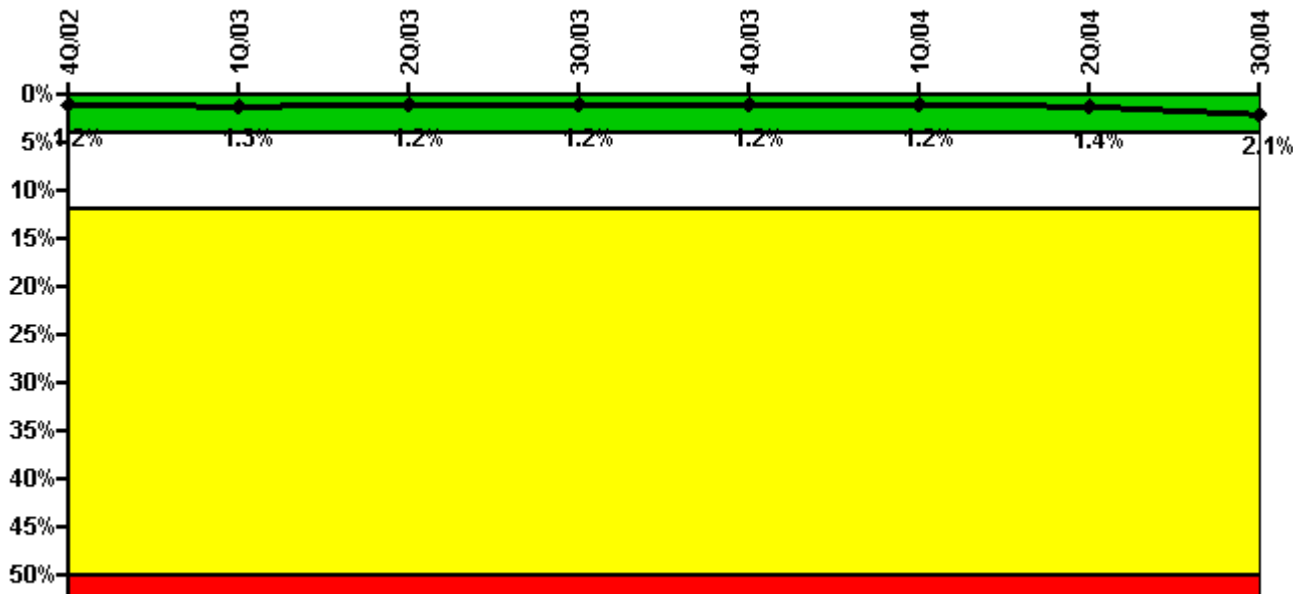
Thresholds: White > 2.5% Yellow > 10.0% Red > 20.0%

#### Notes

Safety System Unavailability, Emergency AC Power, >2EDG	4Q/02	1Q/03	2Q/03	3Q/03	4Q/03	1Q/04	2Q/04	3Q/04
<b>Train 1</b>								
Planned unavailable hours	4.80	65.60	69.02	0	17.90	29.10	13.30	39.50
Unplanned unavailable hours	0	0	61.10	0.60	0	1.20	0	0
Fault exposure hours	0	0	0	0	0	0	0	0
Effective Reset hours	0	0	0	0	0	0	0	0
Required hours	2209.00	2160.00	2183.00	2208.00	2209.00	2184.00	2183.00	2208.00
<b>Train 2</b>								
Planned unavailable hours	6.70	36.50	5.70	0	72.70	39.70	0	13.90
Unplanned unavailable hours	0	36.50	0	0	0	0	0	0
Fault exposure hours	0	33.70	0	0	0	0	0	0
Effective Reset hours	0	0	0	0	0	0	0	0
Required hours	2209.00	2160.00	2183.00	2208.00	2209.00	2184.00	2183.00	2208.00
<b>Train 3</b>								
Planned unavailable hours	131.20	0.75	0.52	0	22.10	0	22.00	154.60
Unplanned unavailable hours	38.70	0	0	2.60	0	33.10	0	0
Fault exposure hours	0	0	0	0	0	0	0	0
Effective Reset hours	0	0	0	0	0	0	0	0
Required hours	2209.00	2160.00	2183.00	2208.00	2209.00	2184.00	2183.00	2208.00
<b>Train 4</b>								
Planned unavailable hours	1.40	45.00	0	7.40	0	0	0	15.50
Unplanned unavailable hours	30.50	0	0	0	0	0	0	0
Fault exposure hours	0	0	0	0	0	0	0	0
Effective Reset hours	0	0	0	0	0	0	0	0
Required hours	2209.00	2160.00	2183.00	2208.00	2209.00	2184.00	2183.00	2208.00
<b>Indicator value</b>	<b>1.9%</b>	<b>2.0%</b>	<b>1.8%</b>	<b>1.7%</b>	<b>1.7%</b>	<b>1.7%</b>	<b>1.6%</b>	<b>1.7%</b>

Licensee Comments: none

### Safety System Unavailability, High Pressure Injection System (HPCI)



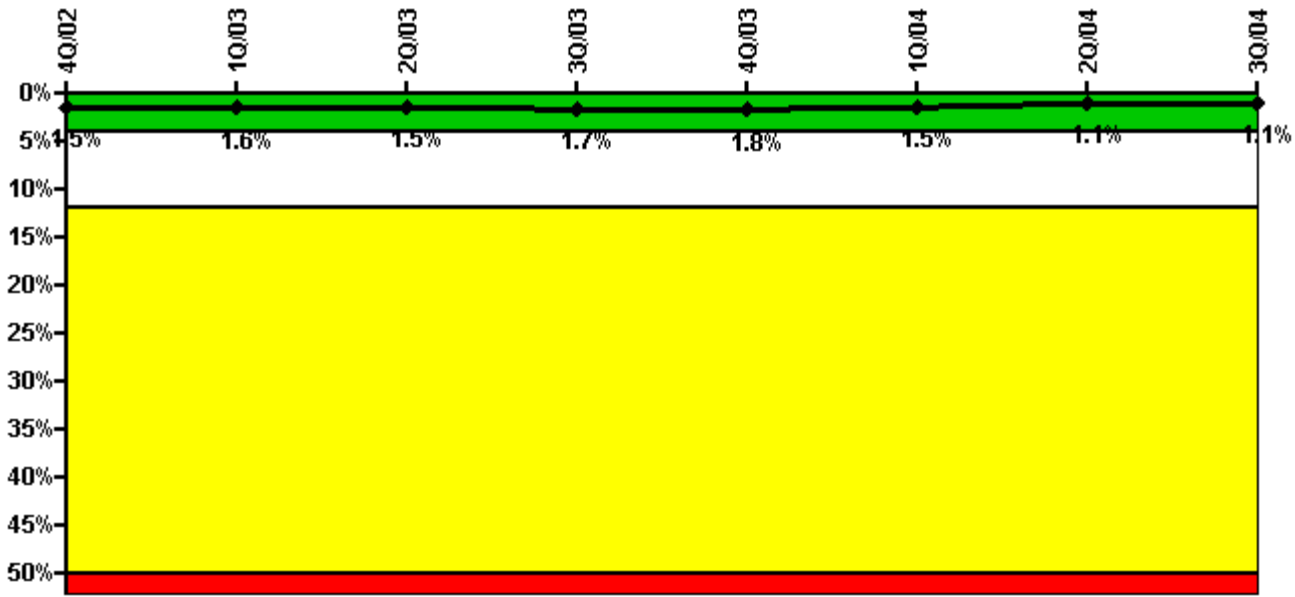
Thresholds: White > 4.0% Yellow > 12.0% Red > 50.0%

#### Notes

Safety System Unavailability, High Pressure Injection System (HPCI)	4Q/02	1Q/03	2Q/03	3Q/03	4Q/03	1Q/04	2Q/04	3Q/04
<b>Train 1</b>								
Planned unavailable hours	4.80	1.40	20.20	3.70	1.70	4.60	51.60	154.20
Unplanned unavailable hours	0	0	0	0	0	0	0	0
Fault exposure hours	0	0	0	0	0	0	0	0
Effective Reset hours	0	0	0	0	0	0	0	0
Required hours	2209.00	1959.80	1537.60	2003.50	1909.20	1824.62	1994.55	2208.00
<b>Indicator value</b>	<b>1.2%</b>	<b>1.3%</b>	<b>1.2%</b>	<b>1.2%</b>	<b>1.2%</b>	<b>1.2%</b>	<b>1.4%</b>	<b>2.1%</b>

Licensee Comments: none

### Safety System Unavailability, Heat Removal System (RCIC)



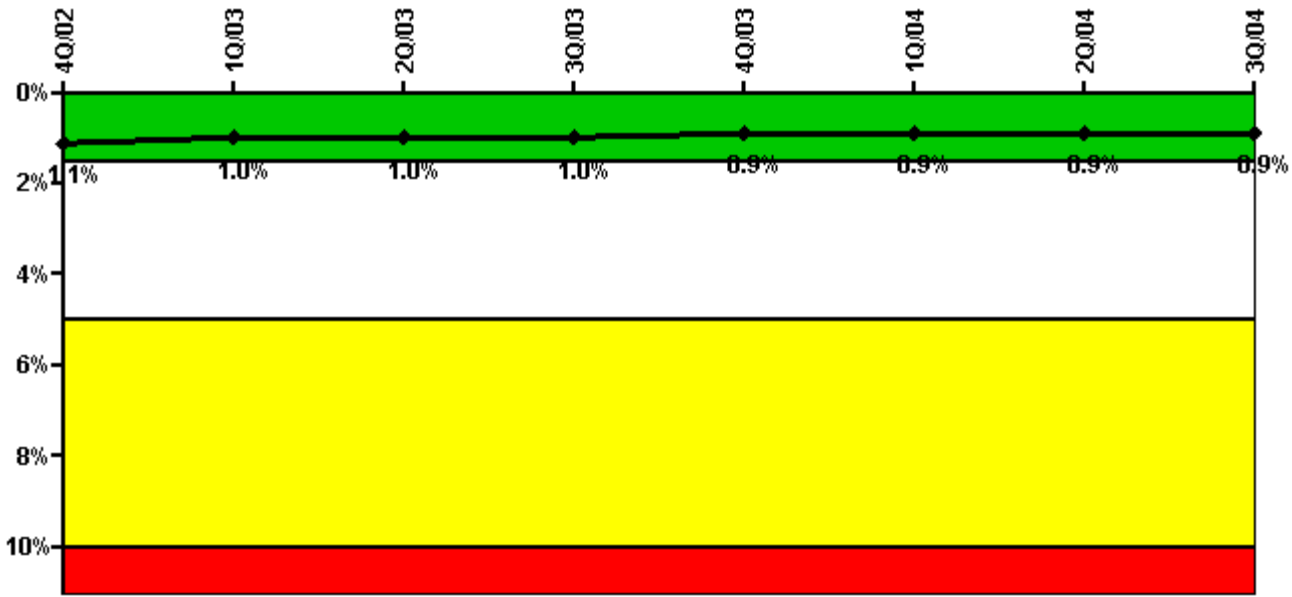
Thresholds: White > 4.0% Yellow > 12.0% Red > 50.0%

#### Notes

Safety System Unavailability, Heat Removal System (RCIC)	4Q/02	1Q/03	2Q/03	3Q/03	4Q/03	1Q/04	2Q/04	3Q/04
<b>Train 1</b>								
Planned unavailable hours	11.70	13.00	8.80	31.60	15.10	0.40	12.90	5.40
Unplanned unavailable hours	0	0	0	0	6.20	0	0	0
Fault exposure hours	0	0	0	0	0	0	0	0
Effective Reset hours	0	0	0	0	0	0	0	0
Required hours	2209.00	1959.80	1537.60	2003.50	1909.20	1824.62	1994.55	2208.00
<b>Indicator value</b>	<b>1.5%</b>	<b>1.6%</b>	<b>1.5%</b>	<b>1.7%</b>	<b>1.8%</b>	<b>1.5%</b>	<b>1.1%</b>	<b>1.1%</b>

Licensee Comments: none

### Safety System Unavailability, Residual Heat Removal System



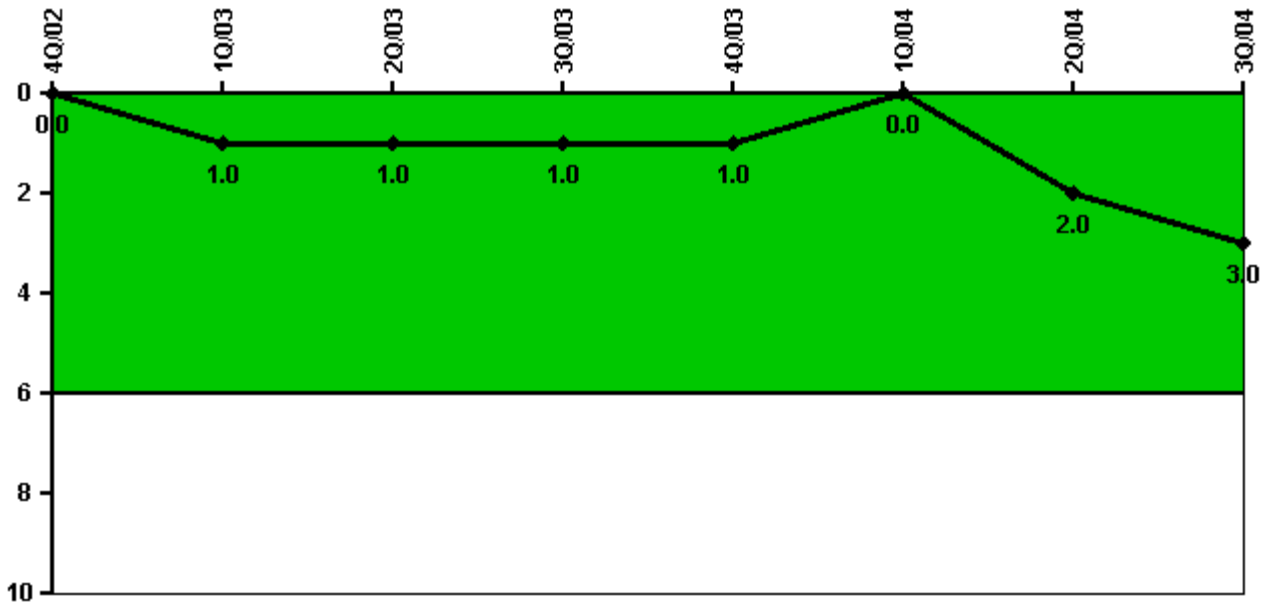
Thresholds: White > 1.5% Yellow > 5.0% Red > 10.0%

**Notes**

Safety System Unavailability, Residual Heat Removal System	4Q/02	1Q/03	2Q/03	3Q/03	4Q/03	1Q/04	2Q/04	3Q/04
<b>Train 1</b>								
Planned unavailable hours	1.00	30.80	1.00	2.70	1.00	1.00	60.20	1.00
Unplanned unavailable hours	0	0	0	0	0	1.60	0	0
Fault exposure hours	0	0	0	0	0	0	0	0
Effective Reset hours	0	0	0	0	0	0	0	0
Required hours	2209.00	2160.00	2183.00	2208.00	2209.00	2184.00	2183.00	2208.00
<b>Train 2</b>								
Planned unavailable hours	18.10	5.00	2.90	1.00	1.00	24.10	17.80	1.00
Unplanned unavailable hours	0	0	0	0	0	0	0	0
Fault exposure hours	0	0	0	0	0	0	0	0
Effective Reset hours	0	0	0	0	0	0	0	0
Required hours	2209.00	2160.00	2183.00	2208.00	2209.00	2184.00	2183.00	2208.00
<b>Indicator value</b>	<b>1.1%</b>	<b>1.0%</b>	<b>1.0%</b>	<b>1.0%</b>	<b>0.9%</b>	<b>0.9%</b>	<b>0.9%</b>	<b>0.9%</b>

Licensee Comments: none

### Safety System Functional Failures (BWR)



Thresholds: White > 6.0

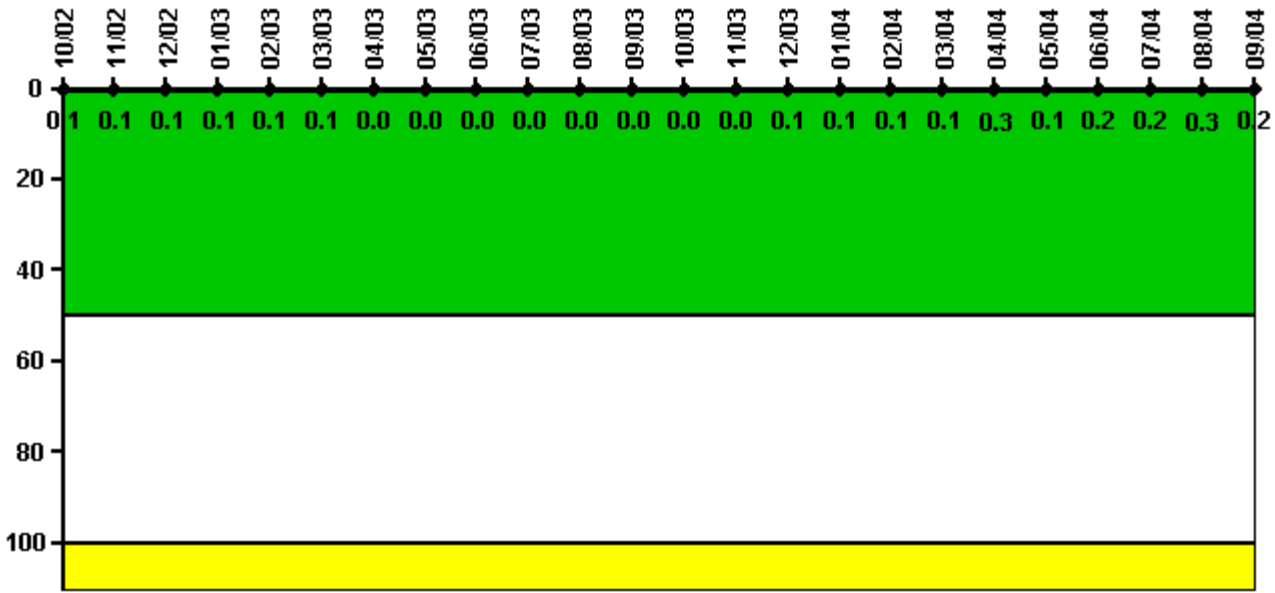
#### Notes

Safety System Functional Failures (BWR)	4Q/02	1Q/03	2Q/03	3Q/03	4Q/03	1Q/04	2Q/04	3Q/04
Safety System Functional Failures	0	1	0	0	0	0	2	1
Indicator value	0	1	1	1	1	0	2	3

Licensee Comments: none



### Reactor Coolant System Activity



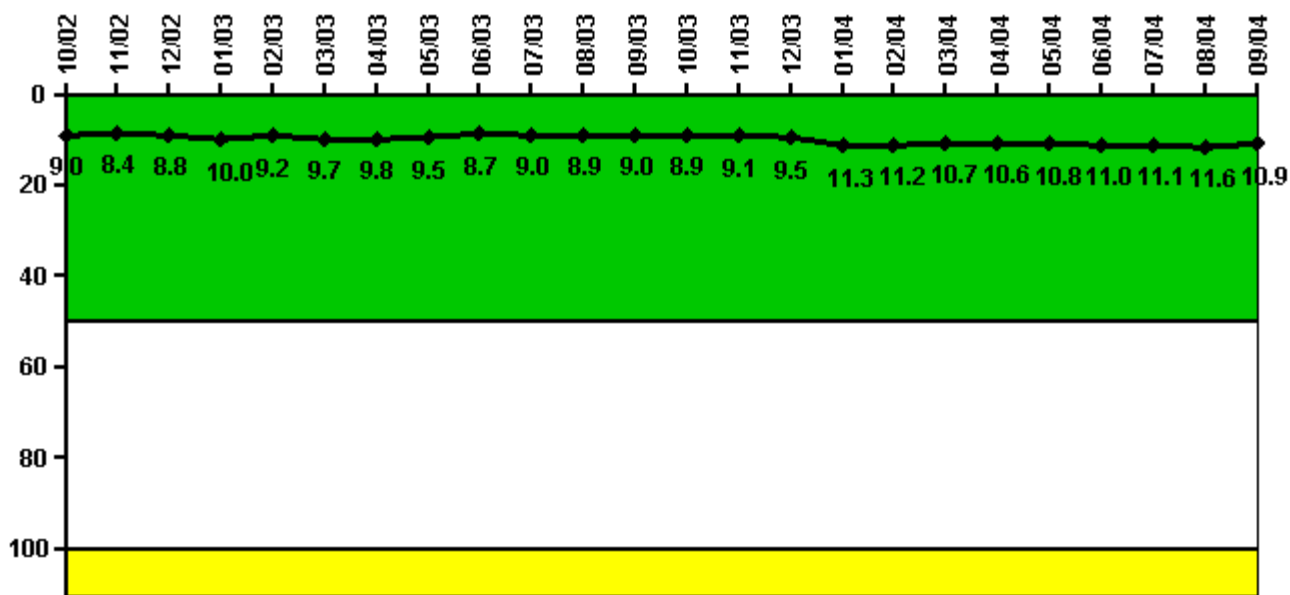
Thresholds: White > 50.0 Yellow > 100.0

#### Notes

Reactor Coolant System Activity	10/02	11/02	12/02	1/03	2/03	3/03	4/03	5/03	6/03	7/03	8/03	9/03
Maximum activity	0.000242	0.000190	0.000199	0.000136	0.000144	0.000101	0.000076	0.000025	0.000020	0.000024	0.000033	0.000043
Technical specification limit	0.2	0.2	0.2	0.2	0.2	0.2	0.2	0.2	0.2	0.2	0.2	0.2
Indicator value	0.1	0.1	0.1	0.1	0.1	0.1	0	0	0	0	0	0
Reactor Coolant System Activity	10/03	11/03	12/03	1/04	2/04	3/04	4/04	5/04	6/04	7/04	8/04	9/04
Maximum activity	0.000074	0.000096	0.000112	0.000153	0.000158	0.000203	0.000565	0.000270	0.000314	0.000376	0.000617	0.000412
Technical specification limit	0.2	0.2	0.2	0.2	0.2	0.2	0.2	0.2	0.2	0.2	0.2	0.2
Indicator value	0	0	0.1	0.1	0.1	0.1	0.3	0.1	0.2	0.2	0.3	0.2

Licensee Comments: none

### Reactor Coolant System Leakage



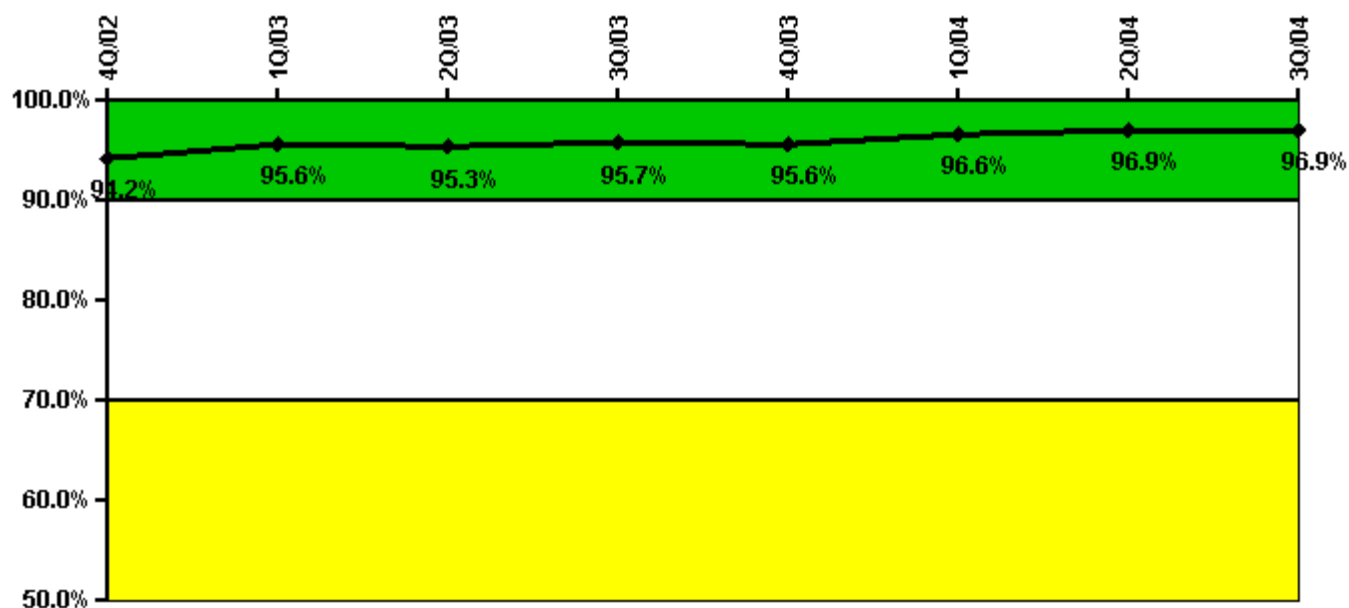
Thresholds: White > 50.0 Yellow > 100.0

#### Notes

Reactor Coolant System Leakage	10/02	11/02	12/02	1/03	2/03	3/03	4/03	5/03	6/03	7/03	8/03	9/03
Maximum leakage	2.254	2.104	2.204	2.504	2.304	2.424	2.454	2.363	2.183	2.253	2.233	2.253
Technical specification limit	25.0	25.0	25.0	25.0	25.0	25.0	25.0	25.0	25.0	25.0	25.0	25.0
Indicator value	9.0	8.4	8.8	10.0	9.2	9.7	9.8	9.5	8.7	9.0	8.9	9.0
Reactor Coolant System Leakage	10/03	11/03	12/03	1/04	2/04	3/04	4/04	5/04	6/04	7/04	8/04	9/04
Maximum leakage	2.233	2.273	2.363	2.830	2.790	2.670	2.640	2.700	2.750	2.770	2.890	2.737
Technical specification limit	25.0	25.0	25.0	25.0	25.0	25.0	25.0	25.0	25.0	25.0	25.0	25.0
Indicator value	8.9	9.1	9.5	11.3	11.2	10.7	10.6	10.8	11.0	11.1	11.6	10.9

Licensee Comments: none

### Drill/Exercise Performance



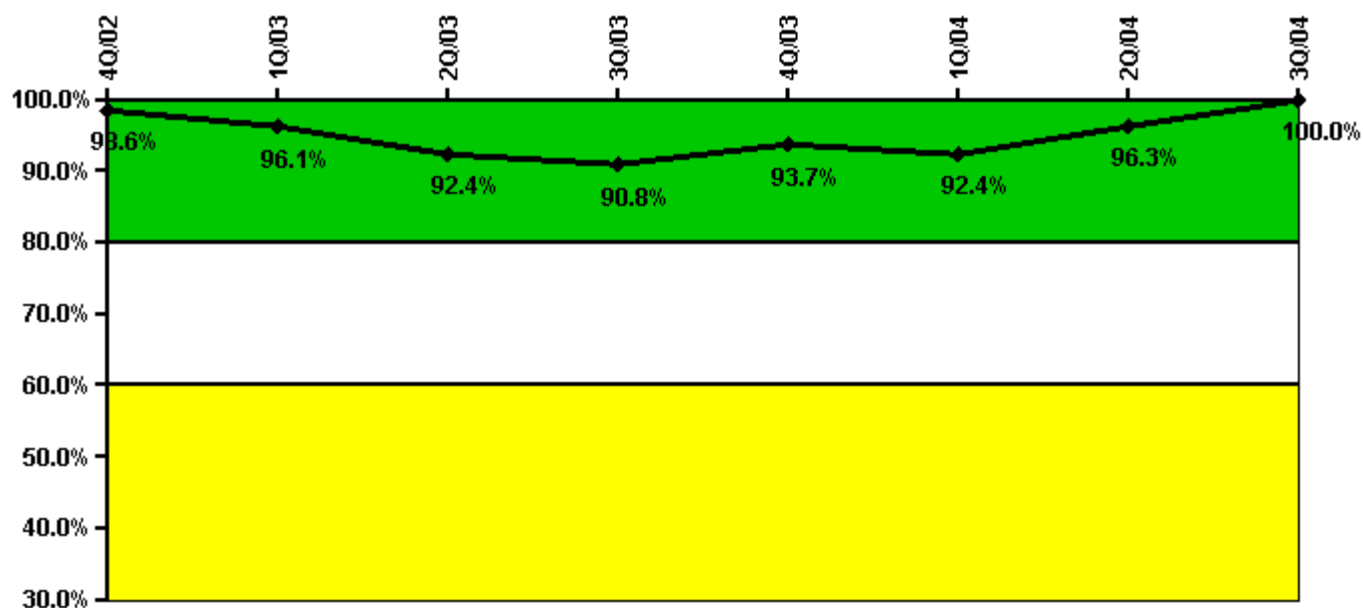
Thresholds: White < 90.0% Yellow < 70.0%

#### Notes

Drill/Exercise Performance	4Q/02	1Q/03	2Q/03	3Q/03	4Q/03	1Q/04	2Q/04	3Q/04
Successful opportunities	34.0	96.0	5.0	18.0	106.0	24.0	10.0	16.0
Total opportunities	38.0	98.0	6.0	18.0	109.0	24.0	10.0	16.0
Indicator value	94.2%	95.6%	95.3%	95.7%	95.6%	96.6%	96.9%	96.9%

Licensee Comments: none

### ERO Drill Participation



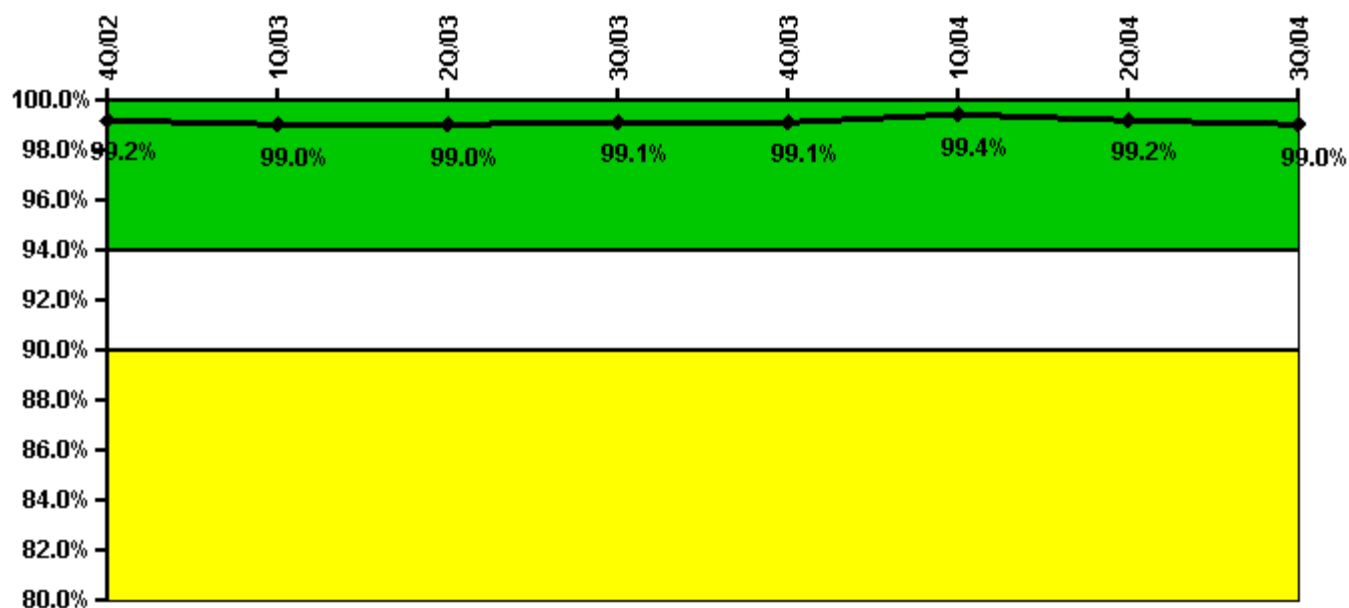
Thresholds: White < 80.0% Yellow < 60.0%

#### Notes

ERO Drill Participation	4Q/02	1Q/03	2Q/03	3Q/03	4Q/03	1Q/04	2Q/04	3Q/04
Participating Key personnel	73.0	73.0	73.0	69.0	74.0	73.0	79.0	82.0
Total Key personnel	74.0	76.0	79.0	76.0	79.0	79.0	82.0	82.0
Indicator value	98.6%	96.1%	92.4%	90.8%	93.7%	92.4%	96.3%	100.0%

Licensee Comments: none

### Alert & Notification System



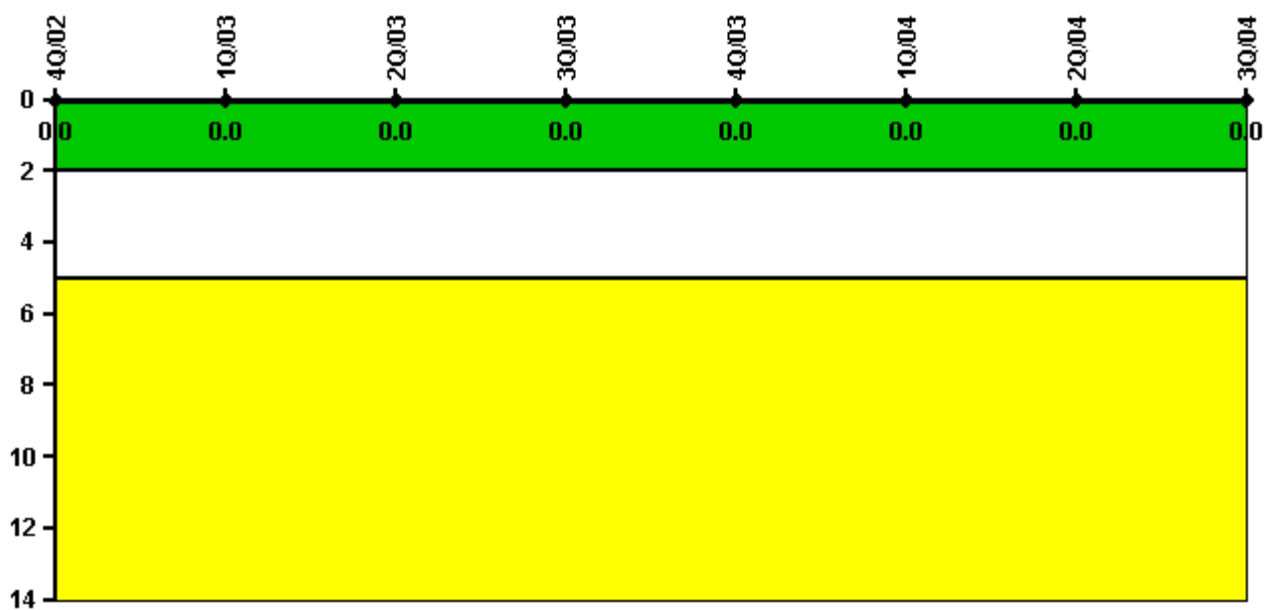
Thresholds: White < 94.0% Yellow < 90.0%

#### Notes

Alert & Notification System	4Q/02	1Q/03	2Q/03	3Q/03	4Q/03	1Q/04	2Q/04	3Q/04
Successful siren-tests	563	526	495	496	491	496	490	492
Total sirens-tests	568	534	499	497	497	497	497	497
Indicator value	99.2%	99.0%	99.0%	99.1%	99.1%	99.4%	99.2%	99.0%

Licensee Comments: none

### Occupational Exposure Control Effectiveness



Thresholds: White > 2.0 Yellow > 5.0

**Notes**

Occupational Exposure Control Effectiveness	4Q/02	1Q/03	2Q/03	3Q/03	4Q/03	1Q/04	2Q/04	3Q/04
High radiation area occurrences	0	0	0	0	0	0	0	0
Very high radiation area occurrences	0	0	0	0	0	0	0	0
Unintended exposure occurrences	0	0	0	0	0	0	0	0
<b>Indicator value</b>	<b>0</b>	<b>0</b>	<b>0</b>	<b>0</b>	<b>0</b>	<b>0</b>	<b>0</b>	<b>0</b>

Licensee Comments: none

### RETS/ODCM Radiological Effluent



Thresholds: White > 1.0 Yellow > 3.0

#### Notes

RETS/ODCM Radiological Effluent	4Q/02	1Q/03	2Q/03	3Q/03	4Q/03	1Q/04	2Q/04	3Q/04
RETS/ODCM occurrences	0	0	0	0	0	0	0	0
Indicator value	0	0	0	0	0	0	0	0

Licensee Comments: none

[Physical Protection](#) information not publicly available.

▲ [Action Matrix Summary](#) | [Inspection Findings Summary](#) | [PI Summary](#) | [Reactor Oversight Process](#)

Last Modified: October 25, 2004