

# Braidwood 1

## 3Q/2004 Performance Indicators

Licensee's General Comments: none

### Unplanned Scrams per 7000 Critical Hrs



Thresholds: White > 3.0 Yellow > 6.0 Red > 25.0

### Notes

Unplanned Scrams per 7000 Critical Hrs	4Q/02	1Q/03	2Q/03	3Q/03	4Q/03	1Q/04	2Q/04	3Q/04
Unplanned scrams	0	0	0	0	0	0	0	0
Critical hours	2209.0	2160.0	1786.1	2208.0	2209.0	2184.0	2183.0	2208.0
Indicator value	0	0	0	0	0	0	0	0

Licensee Comments: none

### Scrams with Loss of Normal Heat Removal



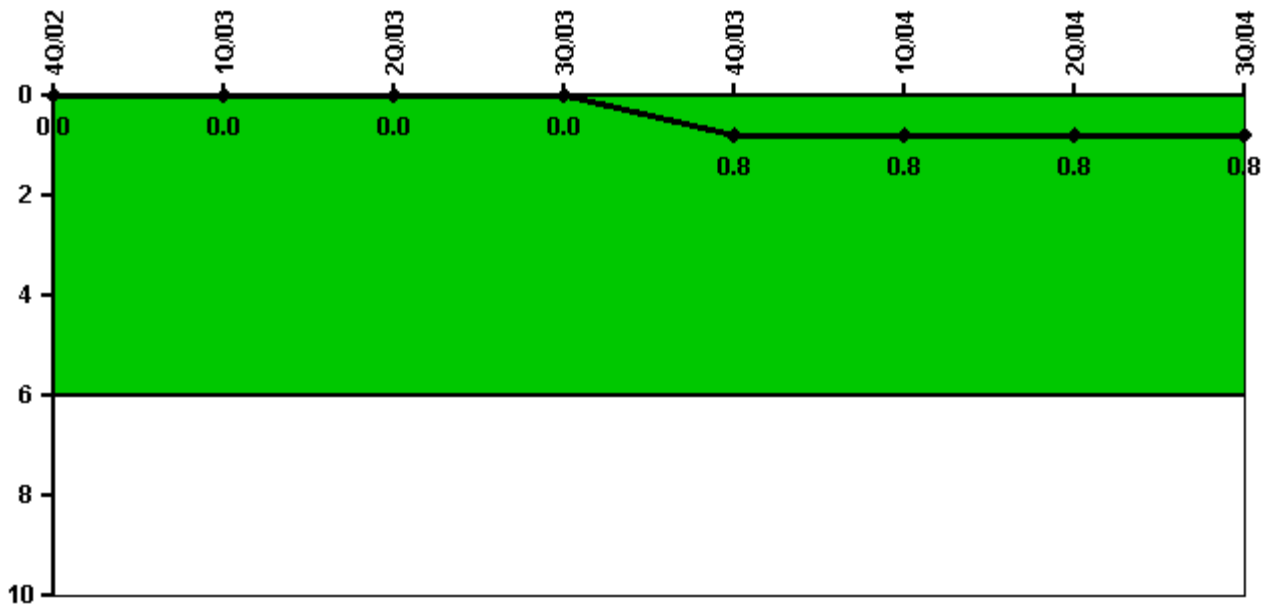
Thresholds: White > 2.0 Yellow > 10.0 Red > 20.0

#### Notes

Scrams with Loss of Normal Heat Removal	4Q/02	1Q/03	2Q/03	3Q/03	4Q/03	1Q/04	2Q/04	3Q/04
Scrams	0	0	0	0	0	0	0	0
Indicator value	0	0	0	0	0	0	0	0

Licensee Comments: none

### Unplanned Power Changes per 7000 Critical Hrs



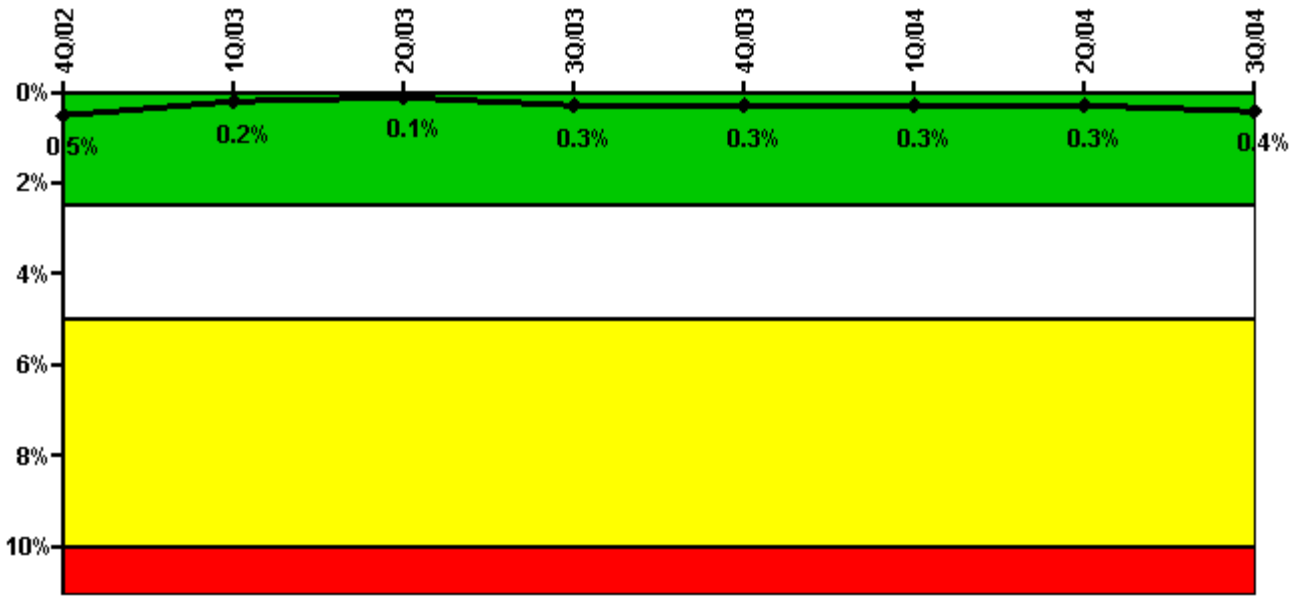
Thresholds: White > 6.0

#### Notes

Unplanned Power Changes per 7000 Critical Hrs	4Q/02	1Q/03	2Q/03	3Q/03	4Q/03	1Q/04	2Q/04	3Q/04
Unplanned power changes	0	0	0	0	1.0	0	0	0
Critical hours	2209.0	2160.0	1786.1	2208.0	2209.0	2184.0	2183.0	2208.0
Indicator value	0	0	0	0	0.8	0.8	0.8	0.8

Licensee Comments: none

### Safety System Unavailability, Emergency AC Power



Thresholds: White > 2.5% Yellow > 5.0% Red > 10.0%

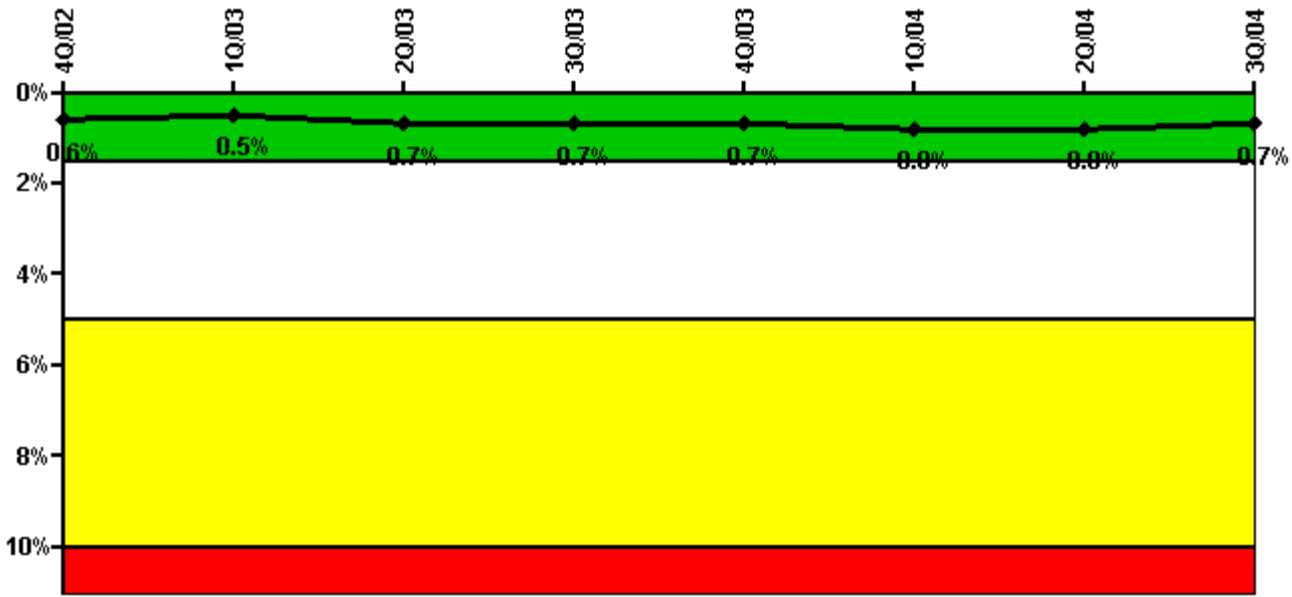
#### Notes

Safety System Unavailability, Emergency AC Power	4Q/02	1Q/03	2Q/03	3Q/03	4Q/03	1Q/04	2Q/04	3Q/04
<b>Train 1</b>								
Planned unavailable hours	2.80	6.60	1.50	94.80	1.27	4.10	2.70	14.60
Unplanned unavailable hours	0	0	0	9.45	0	0	0	0
Fault exposure hours	0	0	0	0	0	0	0	0
Effective Reset hours	0	0	0	0	0	0	0	0
Required hours	2209.00	2160.00	2183.00	2208.00	2209.00	2184.00	2183.00	2208.00
<b>Train 2</b>								
Planned unavailable hours	1.70	6.10	0.40	2.60	1.40	2.80	2.50	17.00
Unplanned unavailable hours	0	0.30	0	0	0	0	0	0
Fault exposure hours	0	0	0	0	0	0	0	0
Effective Reset hours	0	0	0	0	0	0	0	0
Required hours	2209.00	2160.00	2183.00	2208.00	2209.00	2184.00	2183.00	2208.00
<b>Indicator value</b>	<b>0.5%</b>	<b>0.2%</b>	<b>0.1%</b>	<b>0.3%</b>	<b>0.3%</b>	<b>0.3%</b>	<b>0.3%</b>	<b>0.4%</b>

#### Licensee Comments:

2Q/03: 2nd Qtr '04 Change File - comments revised. 1B diesel (Train 2) - 102.9 hrs planned unavailability originally reported 6/03. Hours were due to a planned on-line overhaul/inspection which is allowed by NEI 99-02. Therefore, correction submitted 2Q04. Indicator color does not change.

### Safety System Unavailability, High Pressure Injection System (HPSI)



Thresholds: White > 1.5% Yellow > 5.0% Red > 10.0%

#### Notes

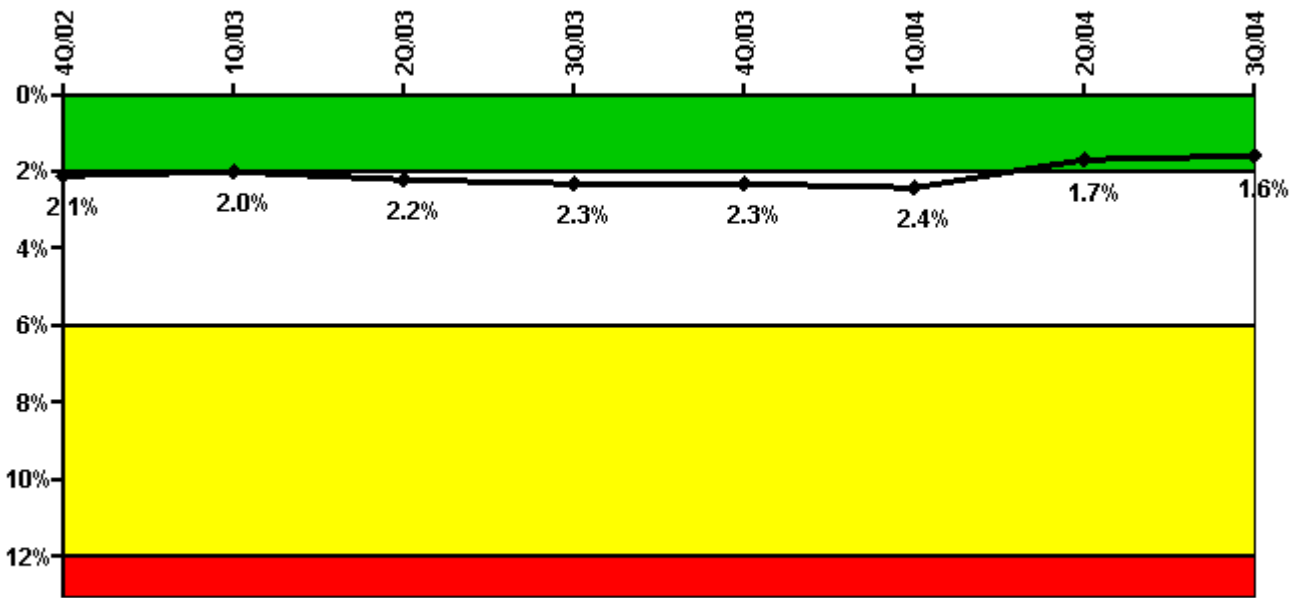
Safety System Unavailability, High Pressure Injection System (HPSI)	4Q/02	1Q/03	2Q/03	3Q/03	4Q/03	1Q/04	2Q/04	3Q/04
<b>Train 1</b>								
Planned unavailable hours	2.90	51.30	1.90	2.90	1.60	17.70	2.70	5.20
Unplanned unavailable hours	0	0	0	0	0	0	0	0
Fault exposure hours	0	0	0	0	0	0	0	0
Effective Reset hours	0	0	0	0	0	0	0	0
Required hours	2209.00	2160.00	1786.10	2208.00	2209.00	2184.00	2183.00	2208.00
<b>Train 2</b>								
Planned unavailable hours	9.70	3.70	89.20	20.10	1.40	35.40	2.50	30.10
Unplanned unavailable hours	0	0	27.70	0	0	0	0	0
Fault exposure hours	0	0	0	0	0	0	0	0
Effective Reset hours	0	0	0	0	0	0	0	0
Required hours	2209.00	2160.00	1786.10	2208.00	2209.00	2184.00	2183.00	2208.00
<b>Train 3</b>								
Planned unavailable hours	2.80	56.50	42.50	2.80	1.30	28.50	2.90	26.90
Unplanned unavailable hours	0	0	0	0	0	0	0	0
Fault exposure hours	0	0	0	0	0	0	0	0
Effective Reset hours	0	0	0	0	0	0	0	0
Required hours	2209.00	2160.00	1786.10	2208.00	2209.00	2184.00	2183.00	2208.00
<b>Train 4</b>								
Planned unavailable hours	74.40	9.80	0.60	2.80	9.40	49.20	70.00	1.60
Unplanned unavailable hours	0	1.00	0	0.20	0	0	0	0
Fault exposure hours	0	0	0	0	0	0	0	0
Effective Reset hours	0	0	0	0	0	0	0	0
Required hours	2209.00	2160.00	1786.10	2208.00	2209.00	2184.00	2183.00	2208.00
<b>Indicator value</b>	<b>0.6%</b>	<b>0.5%</b>	<b>0.7%</b>	<b>0.7%</b>	<b>0.7%</b>	<b>0.8%</b>	<b>0.8%</b>	<b>0.7%</b>

Licensee Comments:

2Q/03: 2nd Qtr '04 Change File - comments revised. Review of data determined that 4/03, 0.5 hours of planned unavail. was originally credited to 1A CV train (Train 3), and should have been credited to the 1B CV train (Train 4). Indicator color does not change.

1Q/01: 2nd Qtr '04 change file - comments revised. Review of data review determined that 2/01, 0.1 hours of planned unavailability was over reported for 1B SI (Train 2). Indicator color is not affected.

### Safety System Unavailability, Heat Removal System (AFW)



Thresholds: White > 2.0% Yellow > 6.0% Red > 12.0%

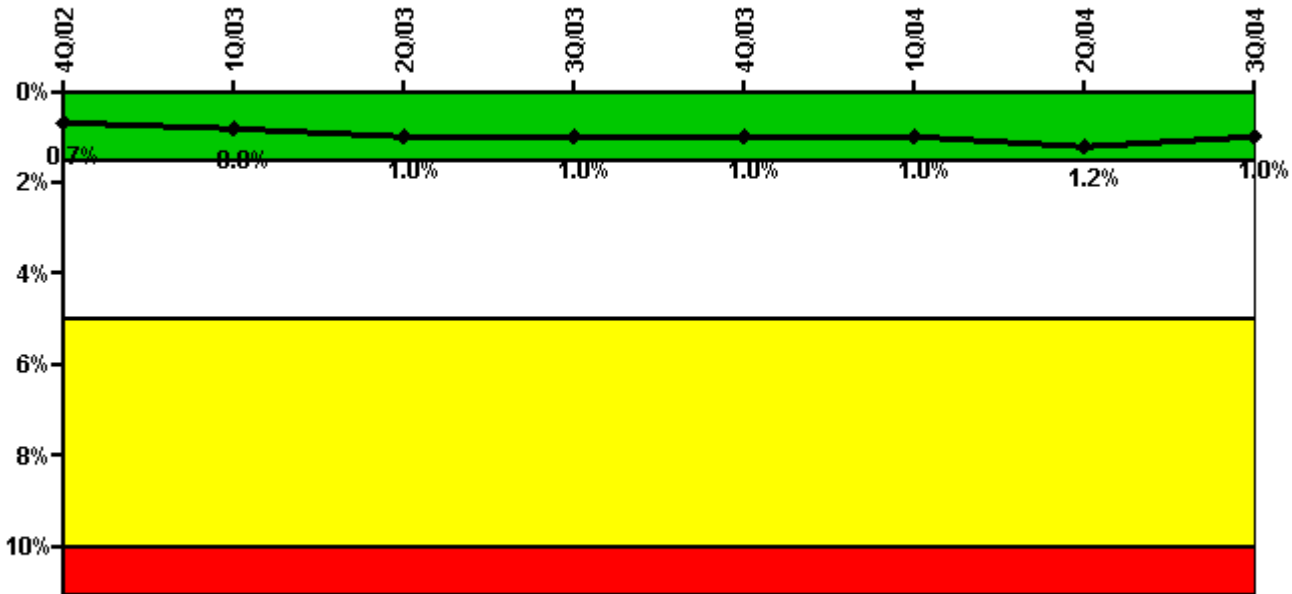
Notes

Safety System Unavailability, Heat Removal System (AFW)	4Q/02	1Q/03	2Q/03	3Q/03	4Q/03	1Q/04	2Q/04	3Q/04
<b>Train 1</b>								
Planned unavailable hours	12.50	9.40	5.90	8.17	6.78	12.20	11.80	8.90
Unplanned unavailable hours	0	0	0	0	0	0	0	0
Fault exposure hours	0	0	0	0	0	0	0	0
Effective Reset hours	0	0	0	0	0	0	0	0
Required hours	2209.00	2160.00	1786.10	2208.00	2209.00	2184.00	2183.00	2208.00
<b>Train 2</b>								
Planned unavailable hours	18.50	13.80	3.30	18.67	20.90	6.80	8.10	9.80
Unplanned unavailable hours	0	0	22.60	0	0	0	0	0
Fault exposure hours	0	0	54.40	64.20	0	0	0	0
Effective Reset hours	0	0	0	0	0	0	0	0
Required hours	2209.00	2160.00	1786.10	2208.00	2209.00	2184.00	2183.00	2208.00
<b>Indicator value</b>	<b>2.1%</b>	<b>2.0%</b>	<b>2.2%</b>	<b>2.3%</b>	<b>2.3%</b>	<b>2.4%</b>	<b>1.7%</b>	<b>1.6%</b>

Licensee Comments:

2Q/03: 2nd Qtr '04 Change File - comments revised. 05/03, 1B AF (Train 2) is reduced by 1.2 hrs due to originally double-counting unavailability time. Indicator color does not change.

### Safety System Unavailability, Residual Heat Removal System



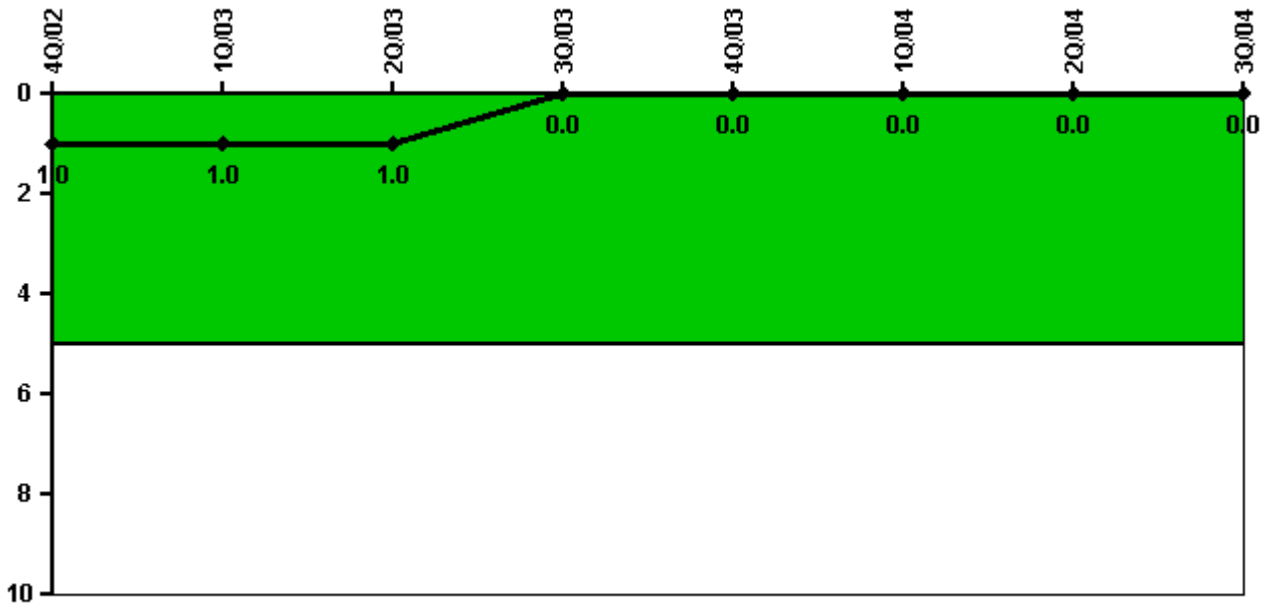
Thresholds: White > 1.5% Yellow > 5.0% Red > 10.0%

### Notes

Safety System Unavailability, Residual Heat Removal System	4Q/02	1Q/03	2Q/03	3Q/03	4Q/03	1Q/04	2Q/04	3Q/04
<b>Train 1</b>								
Planned unavailable hours	38.81	6.90	116.50	4.30	2.10	4.20	69.20	7.10
Unplanned unavailable hours	0	0	0	0	0	0	0	0
Fault exposure hours	0	0	0	0	0	0	0	0
Effective Reset hours	0	0	0	0	0	0	0	0
Required hours	2209.00	2160.00	2183.00	2208.00	2209.00	2184.00	2183.00	2208.00
<b>Train 2</b>								
Planned unavailable hours	14.80	176.90	0	4.80	2.00	3.10	3.50	66.70
Unplanned unavailable hours	0	0	0	0	0	0	0	0
Fault exposure hours	0	0	0	0	0	0	0	0
Effective Reset hours	0	0	0	0	0	0	0	0
Required hours	2209.00	2160.00	2183.00	2208.00	2209.00	2184.00	2183.00	2208.00
<b>Indicator value</b>	<b>0.7%</b>	<b>0.8%</b>	<b>1.0%</b>	<b>1.0%</b>	<b>1.0%</b>	<b>1.0%</b>	<b>1.2%</b>	<b>1.0%</b>

Licensee Comments: none

### Safety System Functional Failures (PWR)



Thresholds: White > 5.0

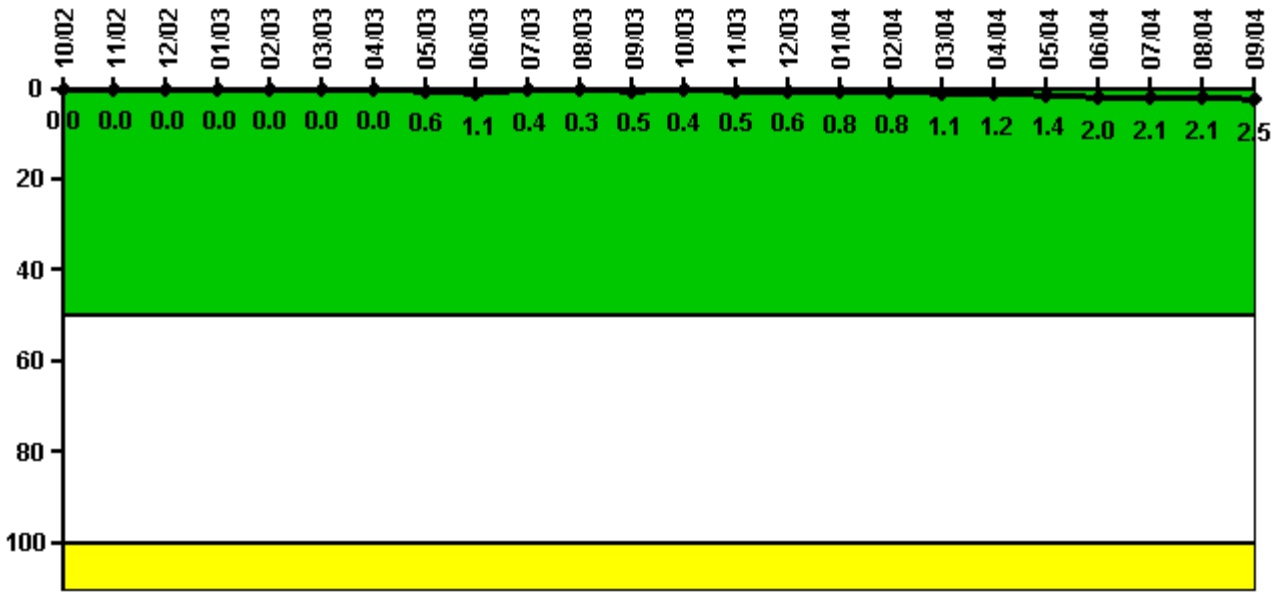
#### Notes

Safety System Functional Failures (PWR)	4Q/02	1Q/03	2Q/03	3Q/03	4Q/03	1Q/04	2Q/04	3Q/04
Safety System Functional Failures	0	0	0	0	0	0	0	0
Indicator value	1	1	1	0	0	0	0	0

Licensee Comments: none



### Reactor Coolant System Activity



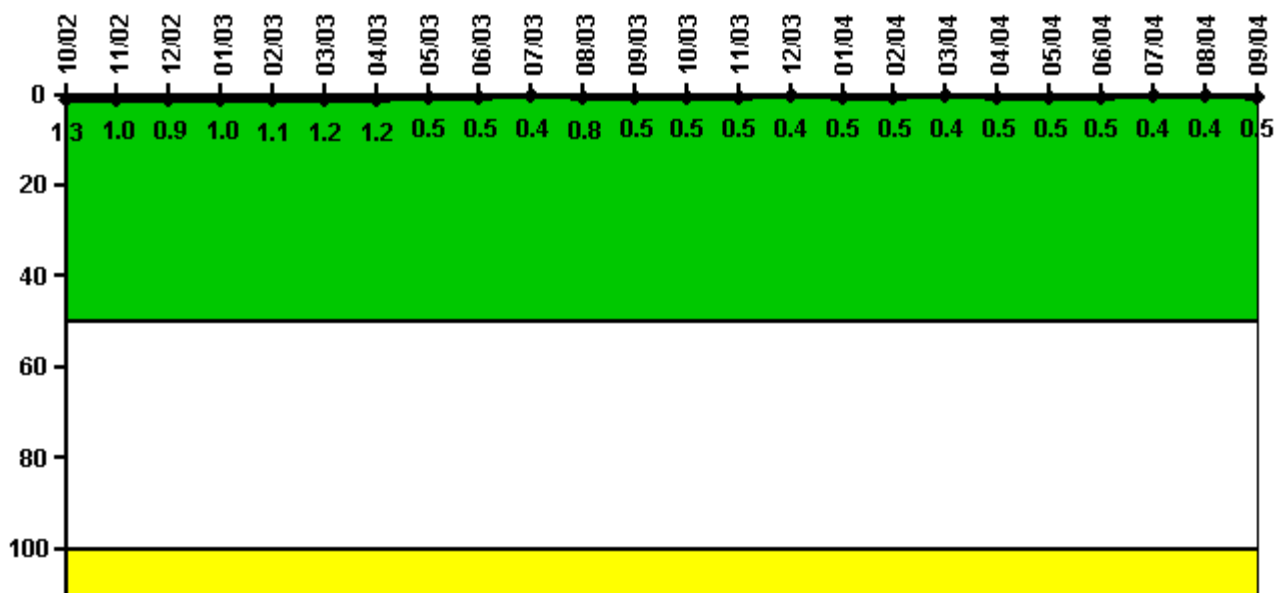
Thresholds: White > 50.0 Yellow > 100.0

#### Notes

Reactor Coolant System Activity	10/02	11/02	12/02	1/03	2/03	3/03	4/03	5/03	6/03	7/03	8/03	9/03
Maximum activity	0.000296	0.000286	0.000297	0.000310	0.000315	0.000317	0.000312	0.005660	0.011300	0.003620	0.002750	0.004690
Technical specification limit	1.0	1.0	1.0	1.0	1.0	1.0	1.0	1.0	1.0	1.0	1.0	1.0
Indicator value	0	0	0	0	0	0	0	0.6	1.1	0.4	0.3	0.5
Reactor Coolant System Activity	10/03	11/03	12/03	1/04	2/04	3/04	4/04	5/04	6/04	7/04	8/04	9/04
Maximum activity	0.003970	0.004590	0.006040	0.007750	0.007920	0.010900	0.011900	0.014200	0.020200	0.021300	0.021400	0.025100
Technical specification limit	1.0	1.0	1.0	1.0	1.0	1.0	1.0	1.0	1.0	1.0	1.0	1.0
Indicator value	0.4	0.5	0.6	0.8	0.8	1.1	1.2	1.4	2.0	2.1	2.1	2.5

Licensee Comments: none

### Reactor Coolant System Leakage



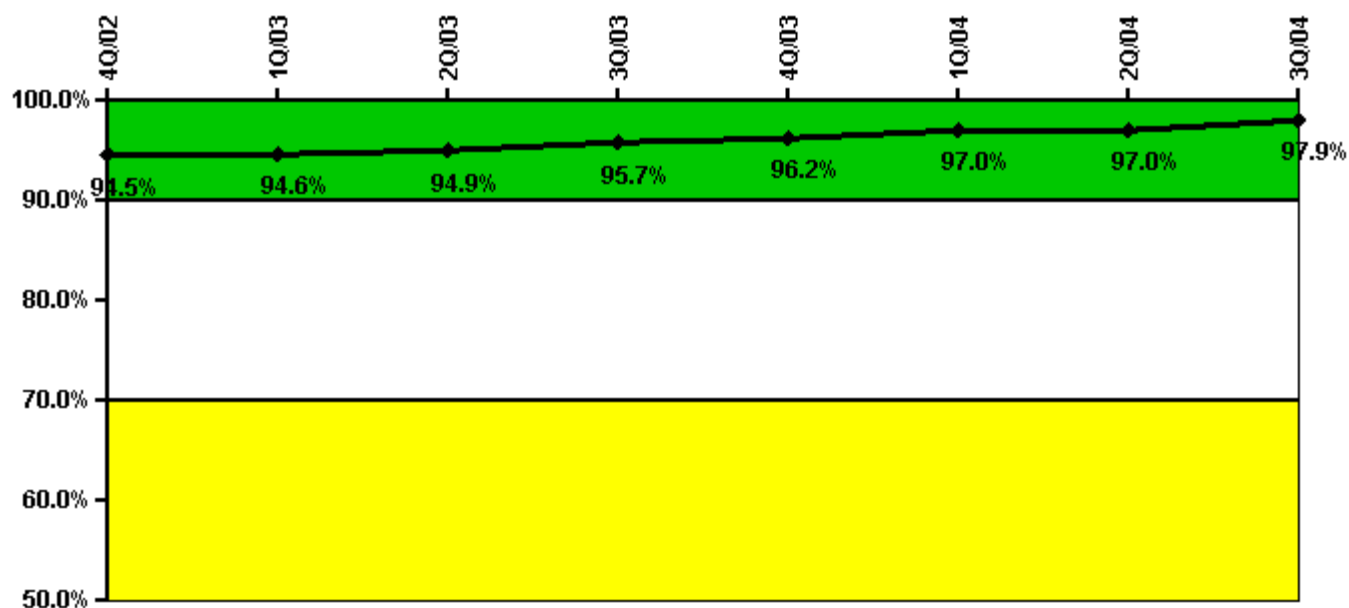
Thresholds: White > 50.0 Yellow > 100.0

#### Notes

Reactor Coolant System Leakage	10/02	11/02	12/02	1/03	2/03	3/03	4/03	5/03	6/03	7/03	8/03	9/03
Maximum leakage	0.129	0.103	0.094	0.096	0.109	0.115	0.118	0.049	0.054	0.044	0.080	0.049
Technical specification limit	10.0	10.0	10.0	10.0	10.0	10.0	10.0	10.0	10.0	10.0	10.0	10.0
Indicator value	1.3	1.0	0.9	1.0	1.1	1.2	1.2	0.5	0.5	0.4	0.8	0.5
Reactor Coolant System Leakage	10/03	11/03	12/03	1/04	2/04	3/04	4/04	5/04	6/04	7/04	8/04	9/04
Maximum leakage	0.046	0.045	0.037	0.045	0.047	0.037	0.045	0.047	0.053	0.041	0.041	0.045
Technical specification limit	10.0	10.0	10.0	10.0	10.0	10.0	10.0	10.0	10.0	10.0	10.0	10.0
Indicator value	0.5	0.5	0.4	0.5	0.5	0.4	0.5	0.5	0.5	0.4	0.4	0.5

Licensee Comments: none

### Drill/Exercise Performance



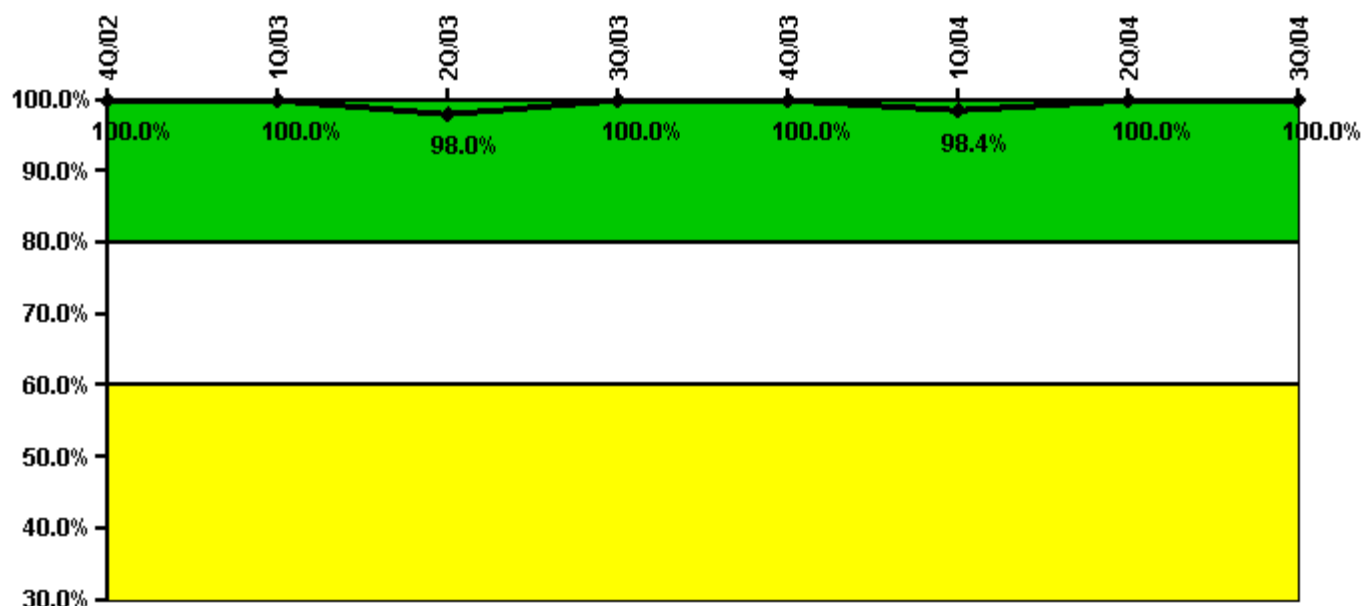
Thresholds: White < 90.0% Yellow < 70.0%

#### Notes

Drill/Exercise Performance	4Q/02	1Q/03	2Q/03	3Q/03	4Q/03	1Q/04	2Q/04	3Q/04
Successful opportunities	73.0	56.0	61.0	128.0	22.0	52.0	50.0	82.0
Total opportunities	77.0	58.0	62.0	130.0	22.0	52.0	52.0	82.0
Indicator value	94.5%	94.6%	94.9%	95.7%	96.2%	97.0%	97.0%	97.9%

Licensee Comments: none

### ERO Drill Participation



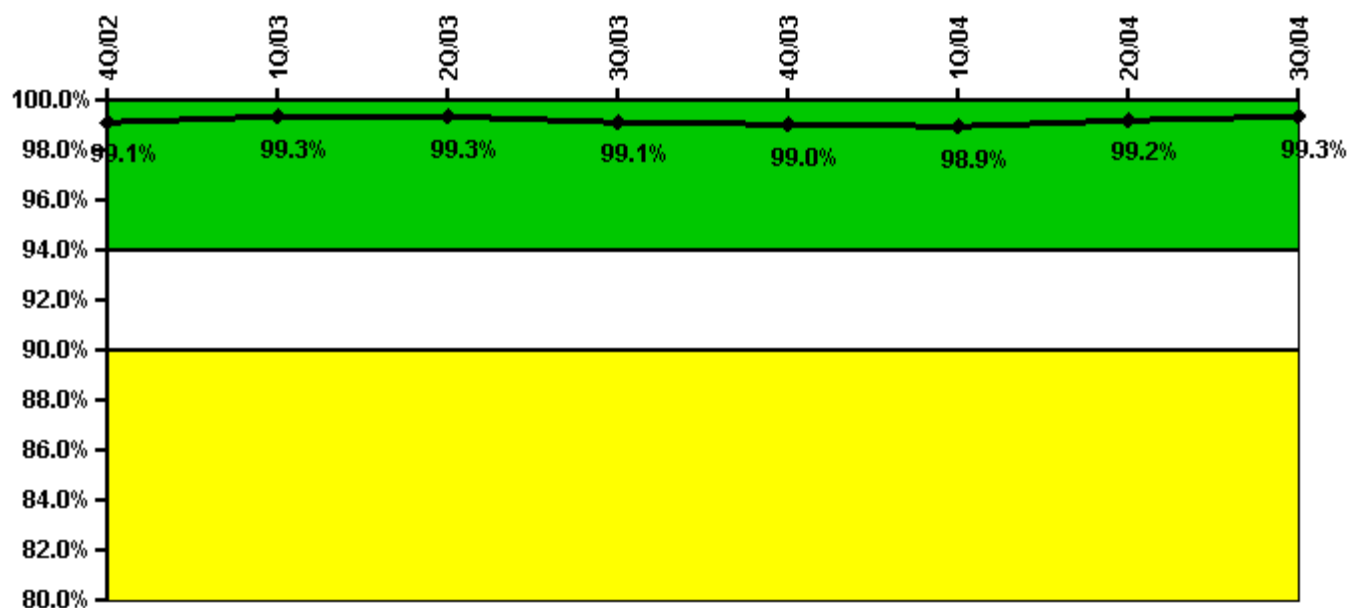
Thresholds: White < 80.0% Yellow < 60.0%

#### Notes

ERO Drill Participation	4Q/02	1Q/03	2Q/03	3Q/03	4Q/03	1Q/04	2Q/04	3Q/04
Participating Key personnel	51.0	53.0	49.0	52.0	52.0	62.0	62.0	60.0
Total Key personnel	51.0	53.0	50.0	52.0	52.0	63.0	62.0	60.0
Indicator value	100.0%	100.0%	98.0%	100.0%	100.0%	98.4%	100.0%	100.0%

Licensee Comments: none

### Alert & Notification System



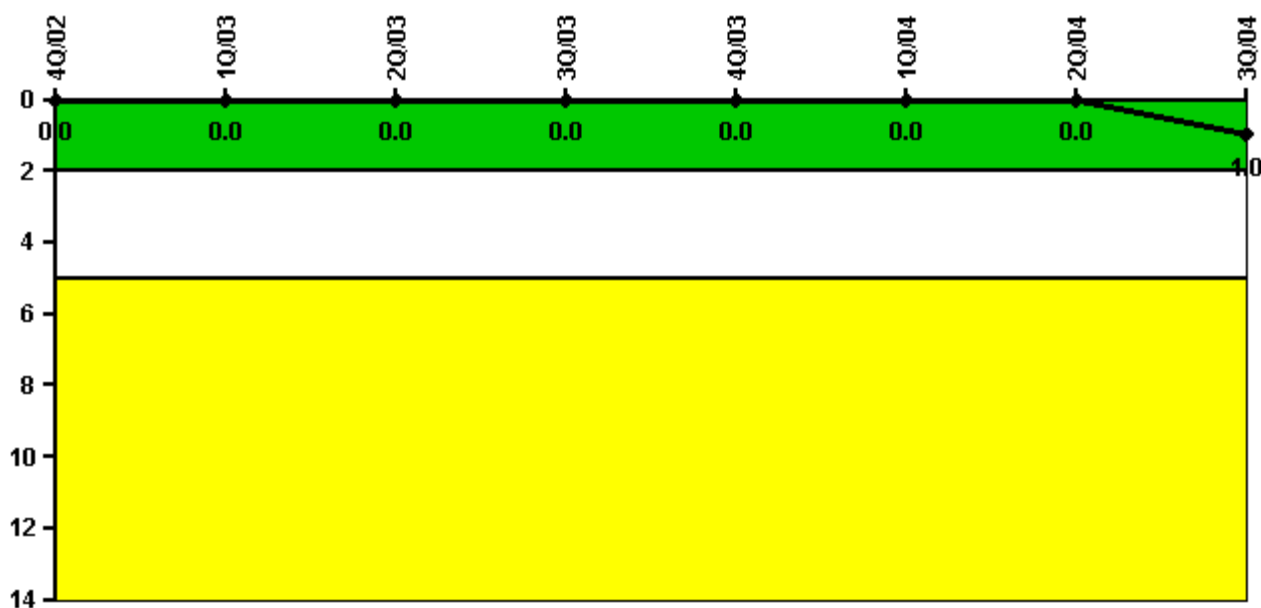
Thresholds: White < 94.0% Yellow < 90.0%

#### Notes

Alert & Notification System	4Q/02	1Q/03	2Q/03	3Q/03	4Q/03	1Q/04	2Q/04	3Q/04
Successful siren-tests	4538	4459	4461	4415	4457	4464	4440	4497
Total sirens-tests	4544	4473	4544	4482	4480	4480	4480	4541
Indicator value	99.1%	99.3%	99.3%	99.1%	99.0%	98.9%	99.2%	99.3%

Licensee Comments: none

### Occupational Exposure Control Effectiveness



Thresholds: White > 2.0 Yellow > 5.0

#### Notes

Occupational Exposure Control Effectiveness	4Q/02	1Q/03	2Q/03	3Q/03	4Q/03	1Q/04	2Q/04	3Q/04
High radiation area occurrences	0	0	0	0	0	0	0	1
Very high radiation area occurrences	0	0	0	0	0	0	0	0
Unintended exposure occurrences	0	0	0	0	0	0	0	0
<b>Indicator value</b>	<b>0</b>	<b>0</b>	<b>0</b>	<b>0</b>	<b>0</b>	<b>0</b>	<b>0</b>	<b>1</b>

Licensee Comments:

3Q/04: The August 2004 event is under review by the Regional Inspector for applicability to FAQ 341.

### RETS/ODCM Radiological Effluent



Thresholds: White > 1.0 Yellow > 3.0

#### Notes

RETS/ODCM Radiological Effluent	4Q/02	1Q/03	2Q/03	3Q/03	4Q/03	1Q/04	2Q/04	3Q/04
RETS/ODCM occurrences	0	0	0	0	0	0	0	0
Indicator value	0	0	0	0	0	0	0	0

Licensee Comments: none

[Physical Protection](#) information not publicly available.

▲ [Action Matrix Summary](#) | [Inspection Findings Summary](#) | [PI Summary](#) | [Reactor Oversight Process](#)

Last Modified: October 25, 2004