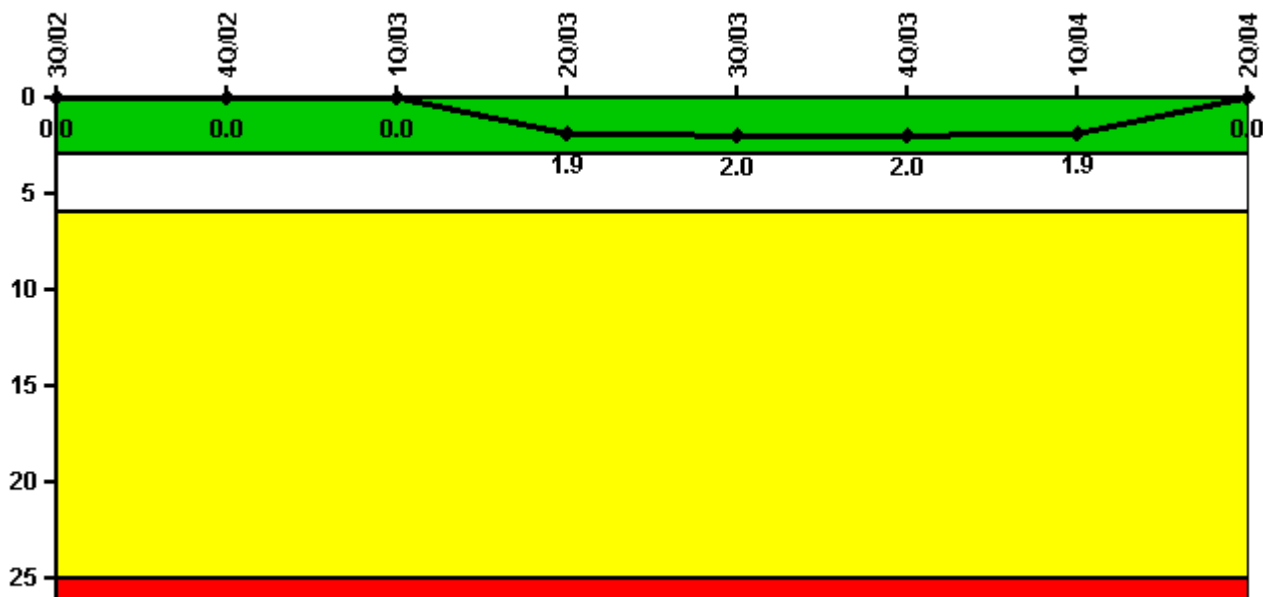


# Columbia Generating Station

## 2Q/2004 Performance Indicators

Licensee's General Comments: none

### Unplanned Scrams per 7000 Critical Hrs



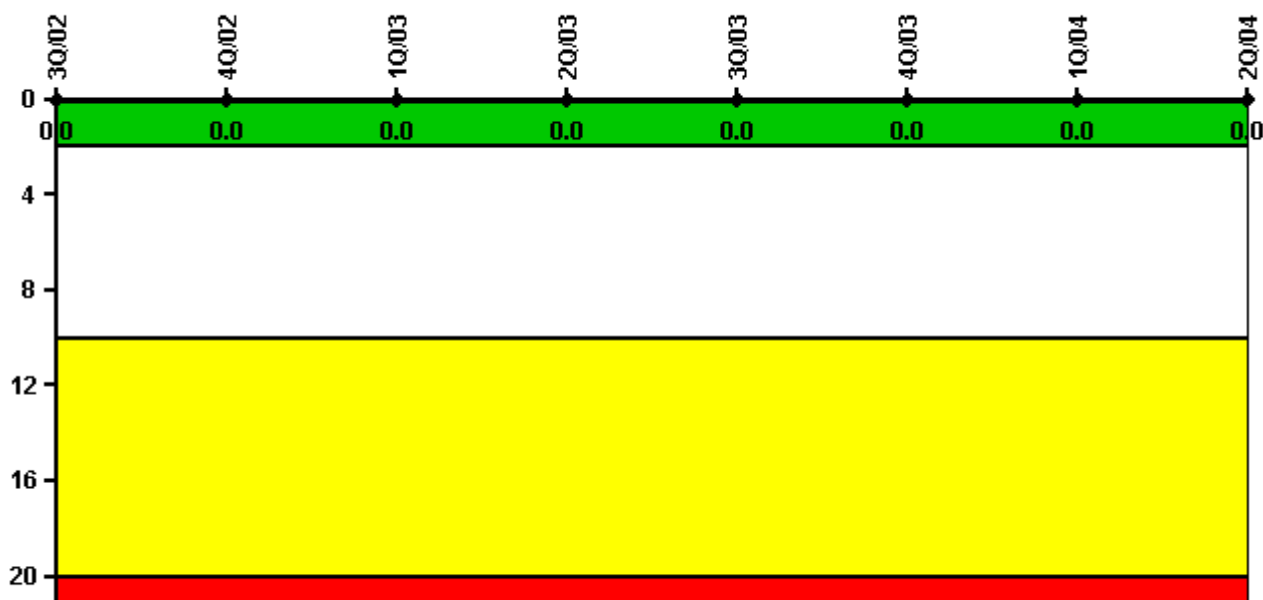
**Thresholds: White > 3.0 Yellow > 6.0 Red > 25.0**

### Notes

Unplanned Scrams per 7000 Critical Hrs	3Q/02	4Q/02	1Q/03	2Q/03	3Q/03	4Q/03	1Q/04	2Q/04
Unplanned scrams	0	0	0	2.0	0	0	0	0
Critical hours	2208.0	2209.0	1849.5	929.1	2175.4	2209.0	2184.0	2183.0
<b>Indicator value</b>	<b>0</b>	<b>0</b>	<b>0</b>	<b>1.9</b>	<b>2.0</b>	<b>2.0</b>	<b>1.9</b>	<b>0</b>

Licensee Comments: none

### Scrams with Loss of Normal Heat Removal



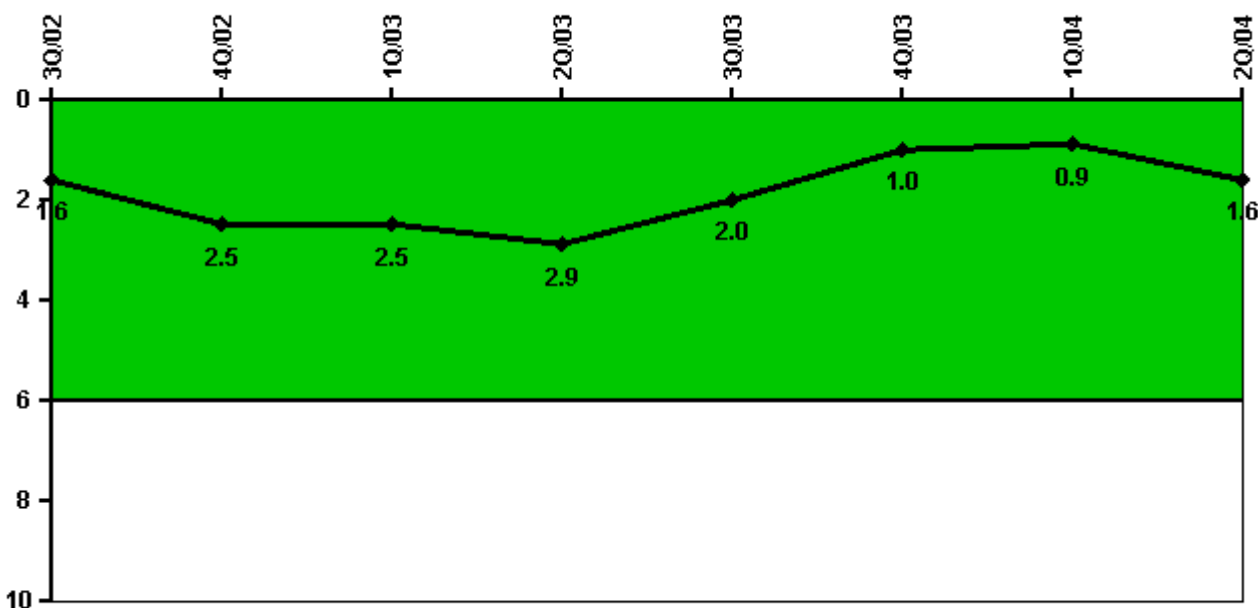
Thresholds: White > 2.0 Yellow > 10.0 Red > 20.0

#### Notes

Scrams with Loss of Normal Heat Removal	3Q/02	4Q/02	1Q/03	2Q/03	3Q/03	4Q/03	1Q/04	2Q/04
Scrams	0	0	0	0	0	0	0	0
Indicator value	0	0	0	0	0	0	0	0

Licensee Comments: none

### Unplanned Power Changes per 7000 Critical Hrs



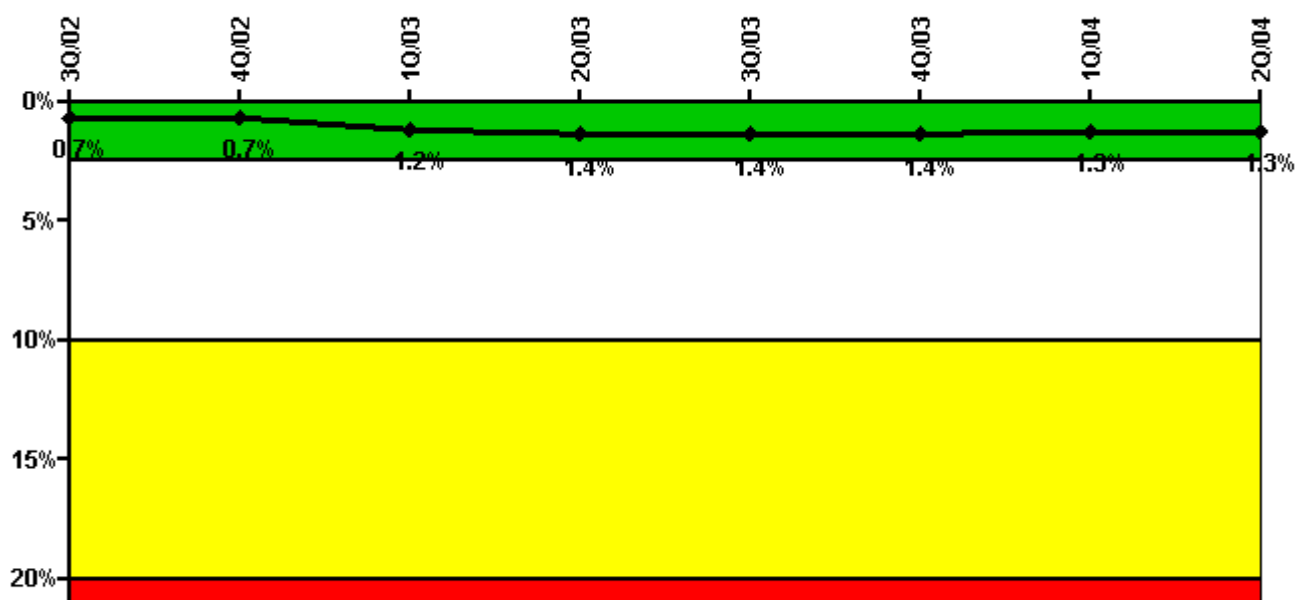
Thresholds: White > 6.0

#### Notes

Unplanned Power Changes per 7000 Critical Hrs	3Q/02	4Q/02	1Q/03	2Q/03	3Q/03	4Q/03	1Q/04	2Q/04
Unplanned power changes	1.0	1.0	1.0	0	0	0	1.0	1.0
Critical hours	2208.0	2209.0	1849.5	929.1	2175.4	2209.0	2184.0	2183.0
Indicator value	1.6	2.5	2.5	2.9	2.0	1.0	0.9	1.6

Licensee Comments: none

## Safety System Unavailability, Emergency AC Power, >2EDG



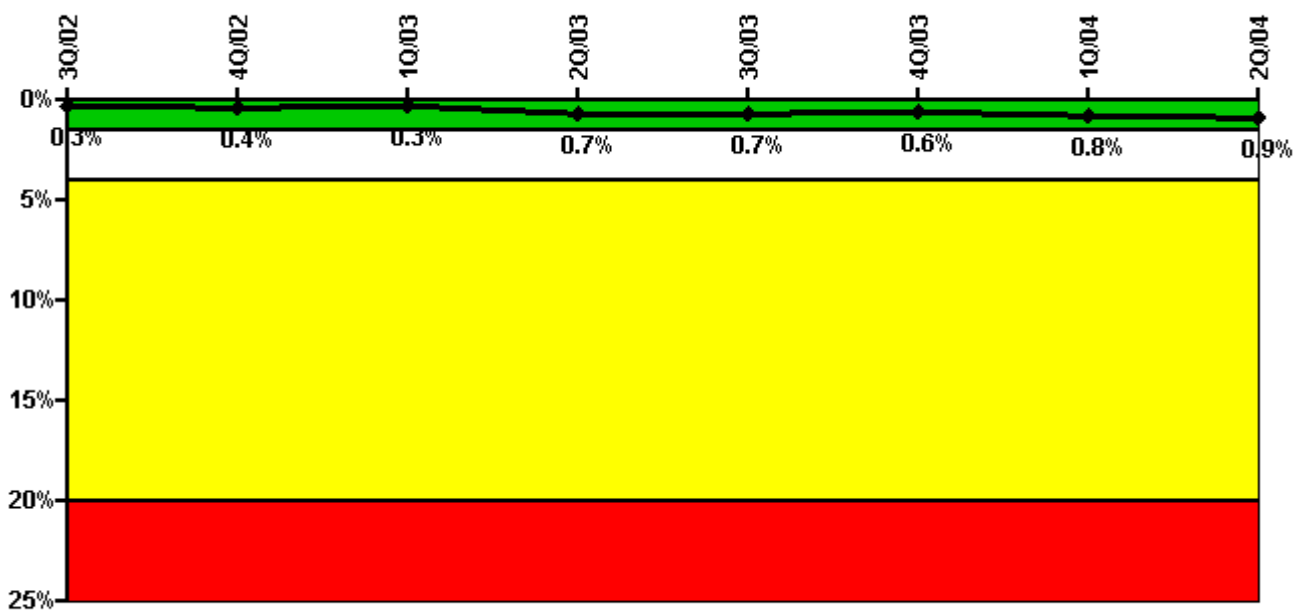
**Thresholds: White > 2.5% Yellow > 10.0% Red > 20.0%**

### Notes

Safety System Unavailability, Emergency AC Power, >2EDG	3Q/02	4Q/02	1Q/03	2Q/03	3Q/03	4Q/03	1Q/04	2Q/04
<b>Train 1</b>								
Planned unavailable hours	2.86	9.47	4.02	63.69	7.22	40.07	1.42	17.96
Unplanned unavailable hours	0	0	317.58	0	0	0	0	0
Fault exposure hours	0	0	0	0	0	0	0	0
Effective Reset hours	0	0	0	0	0	0	0	0
Required hours	2208.00	2209.00	2160.00	2183.00	2208.00	2209.00	2184.00	2183.00
<b>Train 2</b>								
Planned unavailable hours	1.87	2.31	77.49	6.64	41.16	6.22	2.66	7.62
Unplanned unavailable hours	58.30	0	0	0	0	0	0	0
Fault exposure hours	0	0	0	0	0	0	0	0
Effective Reset hours	0	0	0	0	0	0	0	0
Required hours	2208.00	2209.00	2160.00	2183.00	2208.00	2209.00	2184.00	2183.00
<b>Train 3</b>								
Planned unavailable hours	3.42	21.33	8.10	97.82	8.26	9.13	4.23	3.07
Unplanned unavailable hours	0	0	0	0	5.88	0	0	0
Fault exposure hours	0	0	0	0	0	0	0	0
Effective Reset hours	0	0	0	0	0	0	0	0
Required hours	2208.00	2209.00	2160.00	2183.00	2208.00	2209.00	2184.00	2183.00
<b>Indicator value</b>	<b>0.7%</b>	<b>0.7%</b>	<b>1.2%</b>	<b>1.4%</b>	<b>1.4%</b>	<b>1.4%</b>	<b>1.3%</b>	<b>1.3%</b>

Licensee Comments: none

### Safety System Unavailability, High Pressure Injection System (HPIS)



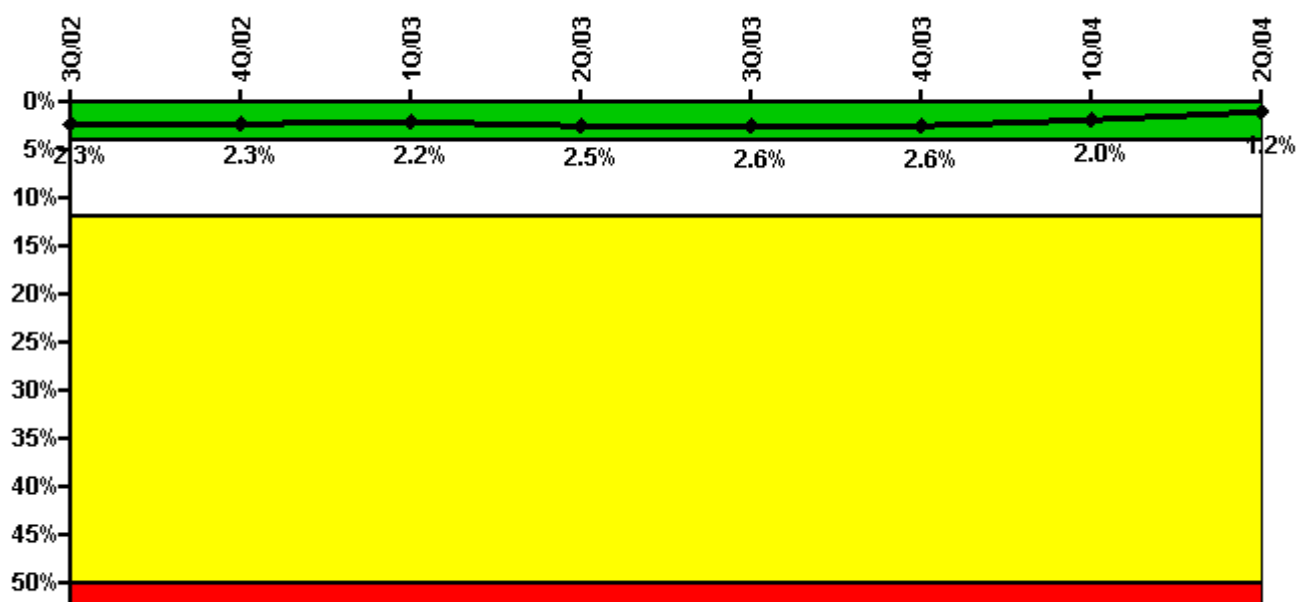
Thresholds: White > 1.5% Yellow > 4.0% Red > 20.0%

#### Notes

Safety System Unavailability, High Pressure Injection System (HPIS)	3Q/02	4Q/02	1Q/03	2Q/03	3Q/03	4Q/03	1Q/04	2Q/04
<b>Train 1</b>								
Planned unavailable hours	1.67	17.46	0.45	78.68	7.42	12.89	49.24	5.62
Unplanned unavailable hours	0	0	0	0	0	0	0.10	16.88
Fault exposure hours	0	0	0	0	0	0	0	0
Effective Reset hours	0	0	0	0	0	0	0	0
Required hours	2208.00	2209.00	1865.85	948.29	2180.17	2209.00	2184.00	2183.00
<b>Indicator value</b>	<b>0.3%</b>	<b>0.4%</b>	<b>0.3%</b>	<b>0.7%</b>	<b>0.7%</b>	<b>0.6%</b>	<b>0.8%</b>	<b>0.9%</b>

Licensee Comments: none

### Safety System Unavailability, Heat Removal System (RCIC)



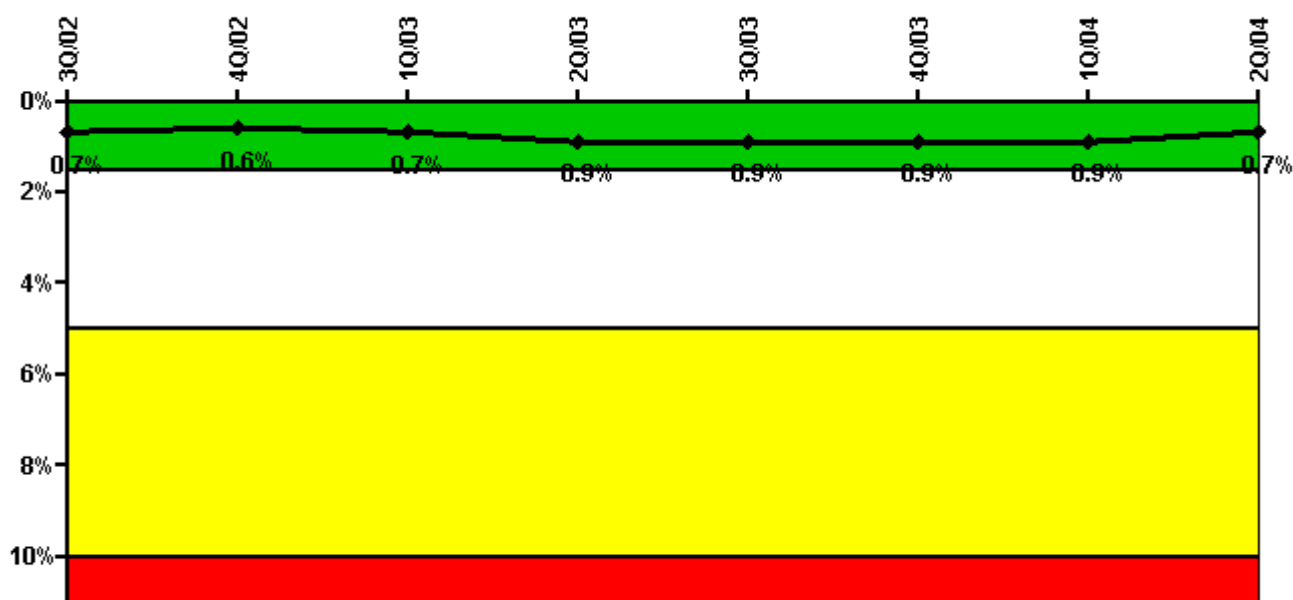
Thresholds: White > 4.0% Yellow > 12.0% Red > 50.0%

#### Notes

Safety System Unavailability, Heat Removal System (RCIC)	3Q/02	4Q/02	1Q/03	2Q/03	3Q/03	4Q/03	1Q/04	2Q/04
<b>Train 1</b>								
Planned unavailable hours	40.55	6.48	11.30	101.52	30.62	13.39	16.81	3.72
Unplanned unavailable hours	3.25	0	1.15	0	0.87	0	12.80	0
Fault exposure hours	0	0	0	0	0	0	0	0
Effective Reset hours	0	0	0	0	0	0	0	0
Required hours	2208.00	2209.00	1851.33	922.61	2166.90	2209.00	2184.00	2183.00
<b>Indicator value</b>	<b>2.3%</b>	<b>2.3%</b>	<b>2.2%</b>	<b>2.5%</b>	<b>2.6%</b>	<b>2.6%</b>	<b>2.0%</b>	<b>1.2%</b>

Licensee Comments: none

## Safety System Unavailability, Residual Heat Removal System



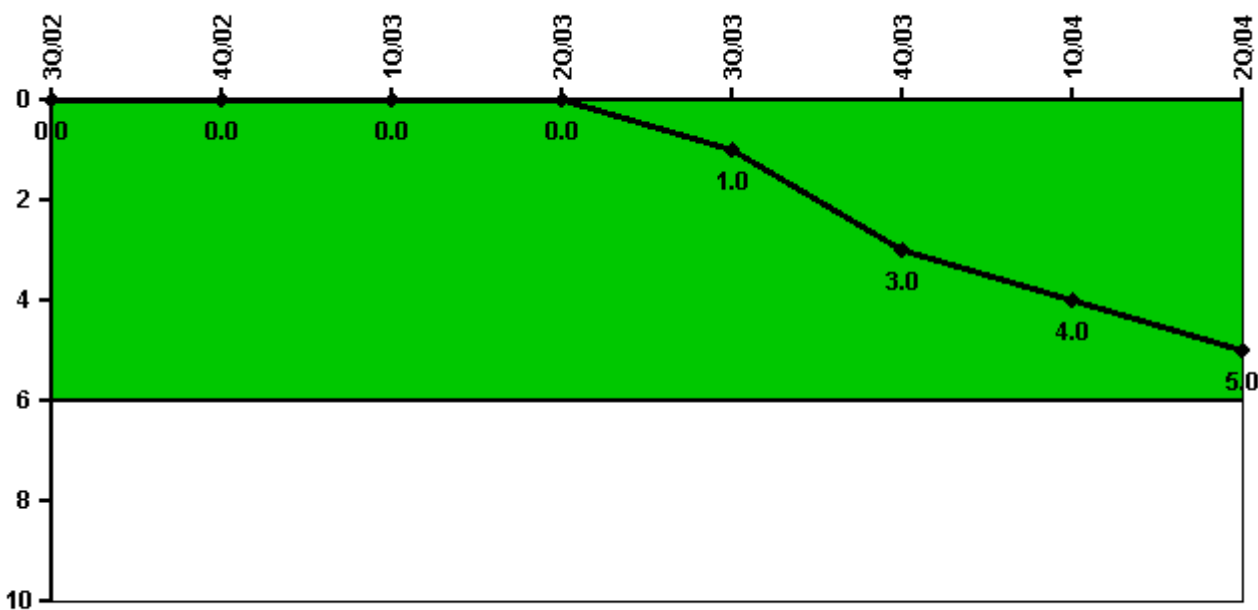
Thresholds: White > 1.5% Yellow > 5.0% Red > 10.0%

### Notes

Safety System Unavailability, Residual Heat Removal System	3Q/02	4Q/02	1Q/03	2Q/03	3Q/03	4Q/03	1Q/04	2Q/04
<b>Train 1</b>								
Planned unavailable hours	1.00	0.48	0.28	68.40	8.05	0.69	1.23	0.37
Unplanned unavailable hours	7.70	0	0	2.34	0	0	0	0
Fault exposure hours	0	0	0	0	0	0	0	0
Effective Reset hours	0	0	0	0	0	0	0	0
Required hours	2208.00	2209.00	2160.00	2183.00	2208.00	2209.00	2184.00	2183.00
<b>Train 2</b>								
Planned unavailable hours	0.67	0.45	47.45	15.69	11.31	0.28	1.95	0.23
Unplanned unavailable hours	58.30	0	0	0	0	0	0	0
Fault exposure hours	0	0	0	0	0	0	0	0
Effective Reset hours	0	0	0	0	0	0	0	0
Required hours	2208.00	2209.00	2160.00	2183.00	2208.00	2209.00	2184.00	2183.00
<b>Indicator value</b>	<b>0.7%</b>	<b>0.6%</b>	<b>0.7%</b>	<b>0.9%</b>	<b>0.9%</b>	<b>0.9%</b>	<b>0.9%</b>	<b>0.7%</b>

Licensee Comments: none

### Safety System Functional Failures (BWR)



Thresholds: White > 6.0

#### Notes

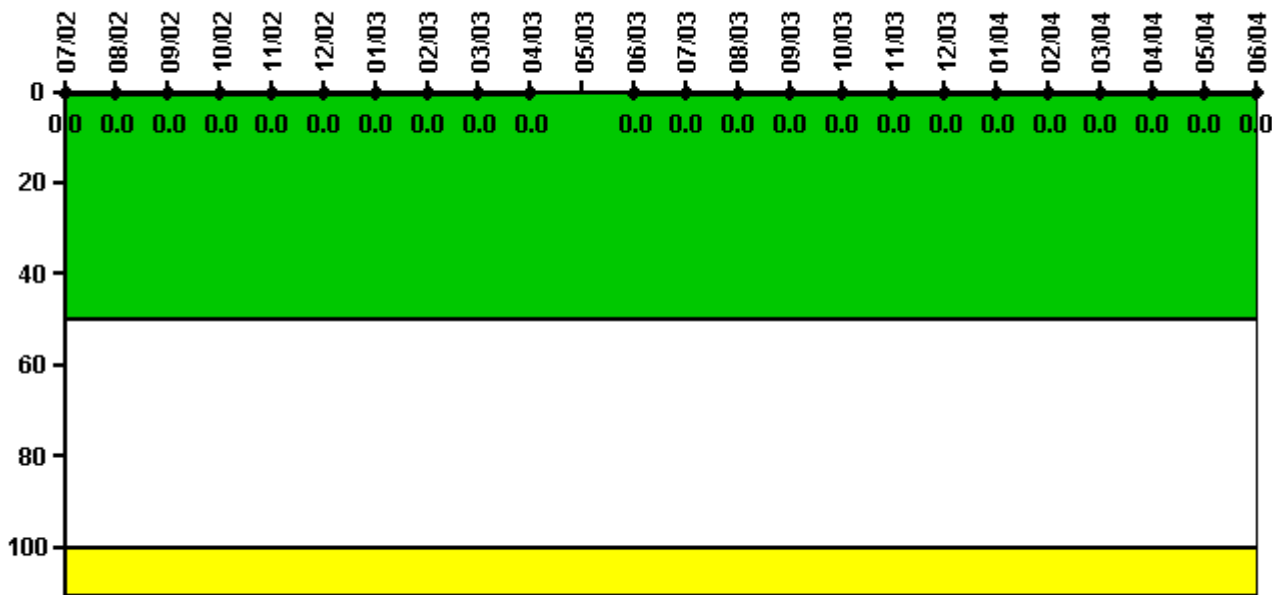
Safety System Functional Failures (BWR)	3Q/02	4Q/02	1Q/03	2Q/03	3Q/03	4Q/03	1Q/04	2Q/04
Safety System Functional Failures	0	0	0	0	1	2	1	1
Indicator value	0	0	0	0	1	3	4	5

Licensee Comments:

2Q/04: Reporting basis for LERs 2003-003-00 & 203-005-00 was changed from reportable per 10 CRF 50.73(a)(2)(v) to "voluntary" via letter GO2-04-102.



### Reactor Coolant System Activity



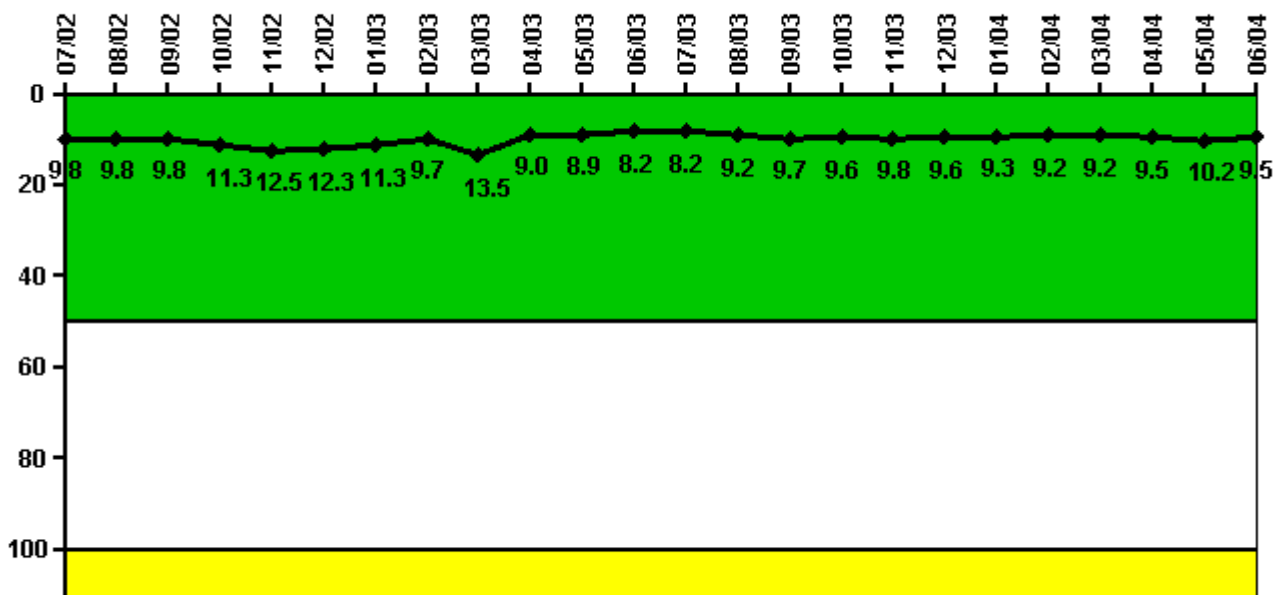
Thresholds: White > 50.0 Yellow > 100.0

#### Notes

Reactor Coolant System Activity	7/02	8/02	9/02	10/02	11/02	12/02	1/03	2/03	3/03	4/03	5/03	6/03
Maximum activity	0.000013	0.000011	0.000010	0.000013	0.000018	0.000014	0.000015	0.000010	0.000018	0.000013	N/A	0.000008
Technical specification limit	0.2	0.2	0.2	0.2	0.2	0.2	0.2	0.2	0.2	0.2	0.2	0.2
Indicator value	0	0	0	0	0	0	0	0	0	0	N/A	0
Reactor Coolant System Activity	7/03	8/03	9/03	10/03	11/03	12/03	1/04	2/04	3/04	4/04	5/04	6/04
Maximum activity	0.000018	0.000017	0.000009	0.000006	0.000005	0.000008	0.000005	0.000005	0.000005	0.000005	0.000005	0.000006
Technical specification limit	0.2	0.2	0.2	0.2	0.2	0.2	0.2	0.2	0.2	0.2	0.2	0.2
Indicator value	0	0	0	0	0	0	0	0	0	0	0	0

Licensee Comments: none

### Reactor Coolant System Leakage



Thresholds: White > 50.0 Yellow > 100.0

#### Notes

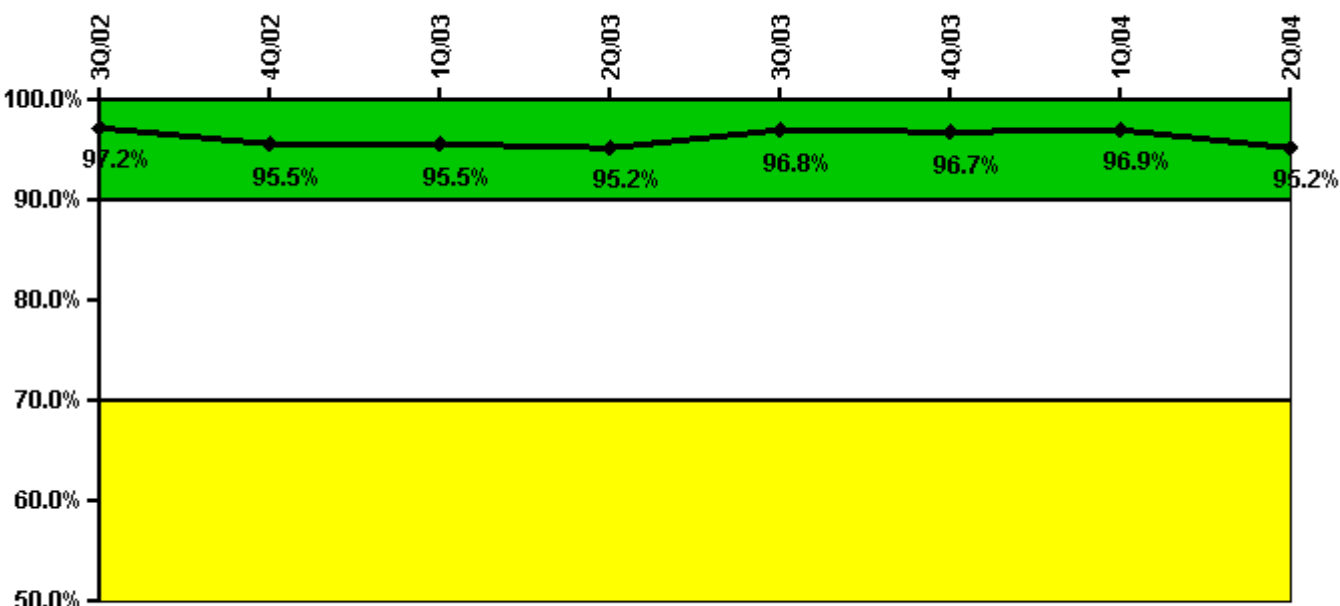
Reactor Coolant System Leakage	7/02	8/02	9/02	10/02	11/02	12/02	1/03	2/03	3/03	4/03	5/03	6/03
Maximum leakage	2.440	2.440	2.460	2.820	3.125	3.070	2.820	2.420	3.370	2.250	2.230	2.060
Technical specification limit	25.0	25.0	25.0	25.0	25.0	25.0	25.0	25.0	25.0	25.0	25.0	25.0
Indicator value	9.8	9.8	9.8	11.3	12.5	12.3	11.3	9.7	13.5	9.0	8.9	8.2

Reactor Coolant System Leakage	7/03	8/03	9/03	10/03	11/03	12/03	1/04	2/04	3/04	4/04	5/04	6/04
Maximum leakage	2.060	2.310	2.420	2.390	2.450	2.410	2.330	2.310	2.290	2.370	2.550	2.380
Technical specification limit	25.0	25.0	25.0	25.0	25.0	25.0	25.0	25.0	25.0	25.0	25.0	25.0
Indicator value	8.2	9.2	9.7	9.6	9.8	9.6	9.3	9.2	9.2	9.5	10.2	9.5

Licensee Comments: none

### Drill/Exercise Performance



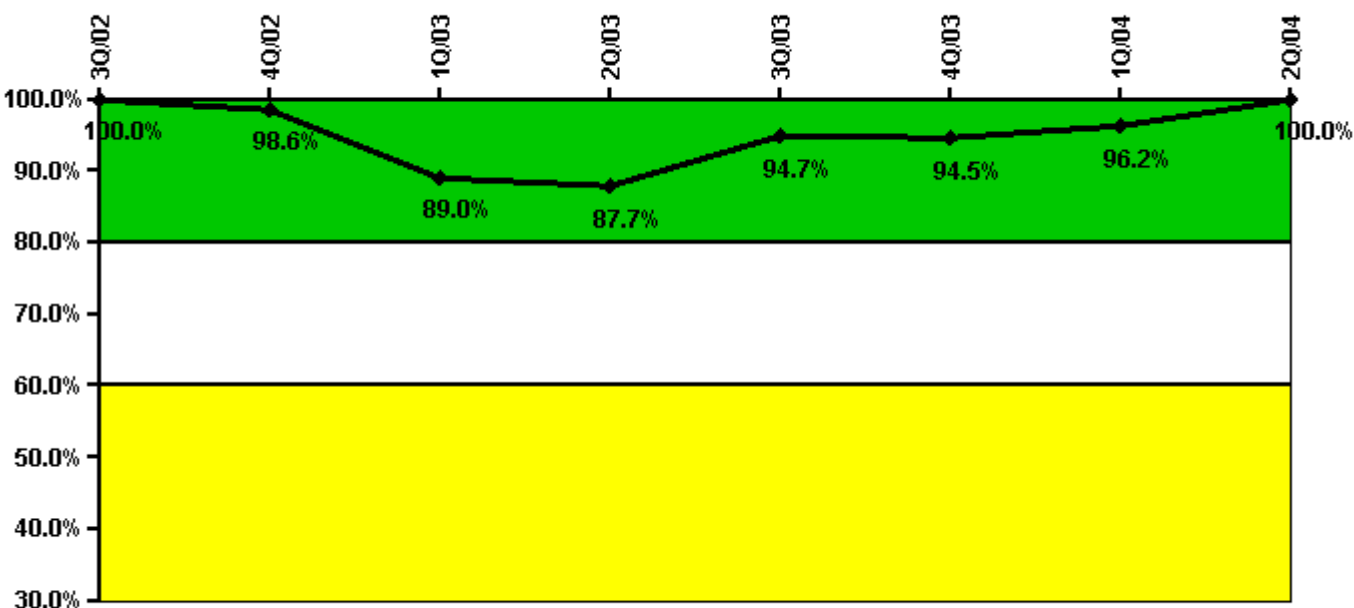
Thresholds: White < 90.0% Yellow < 70.0%

#### Notes

Drill/Exercise Performance	3Q/02	4Q/02	1Q/03	2Q/03	3Q/03	4Q/03	1Q/04	2Q/04
Successful opportunities	20.0	10.0	13.0	19.0	26.0	33.0	17.0	39.0
Total opportunities	20.0	12.0	13.0	20.0	26.0	34.0	18.0	43.0
Indicator value	97.2%	95.5%	95.5%	95.2%	96.8%	96.7%	96.9%	95.2%

Licensee Comments: none

### ERO Drill Participation



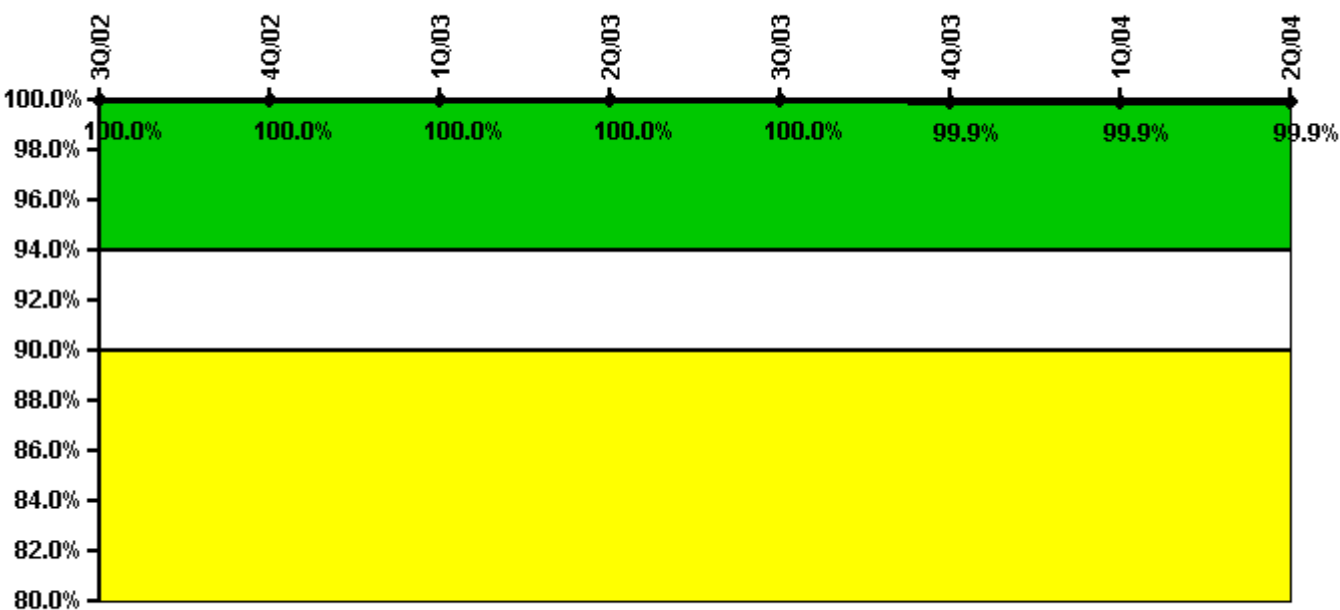
Thresholds: White < 80.0% Yellow < 60.0%

#### Notes

ERO Drill Participation	3Q/02	4Q/02	1Q/03	2Q/03	3Q/03	4Q/03	1Q/04	2Q/04
Participating Key personnel	70.0	69.0	65.0	64.0	54.0	52.0	51.0	54.0
Total Key personnel	70.0	70.0	73.0	73.0	57.0	55.0	53.0	54.0
Indicator value	100.0%	98.6%	89.0%	87.7%	94.7%	94.5%	96.2%	100.0%

Licensee Comments: none

### Alert & Notification System



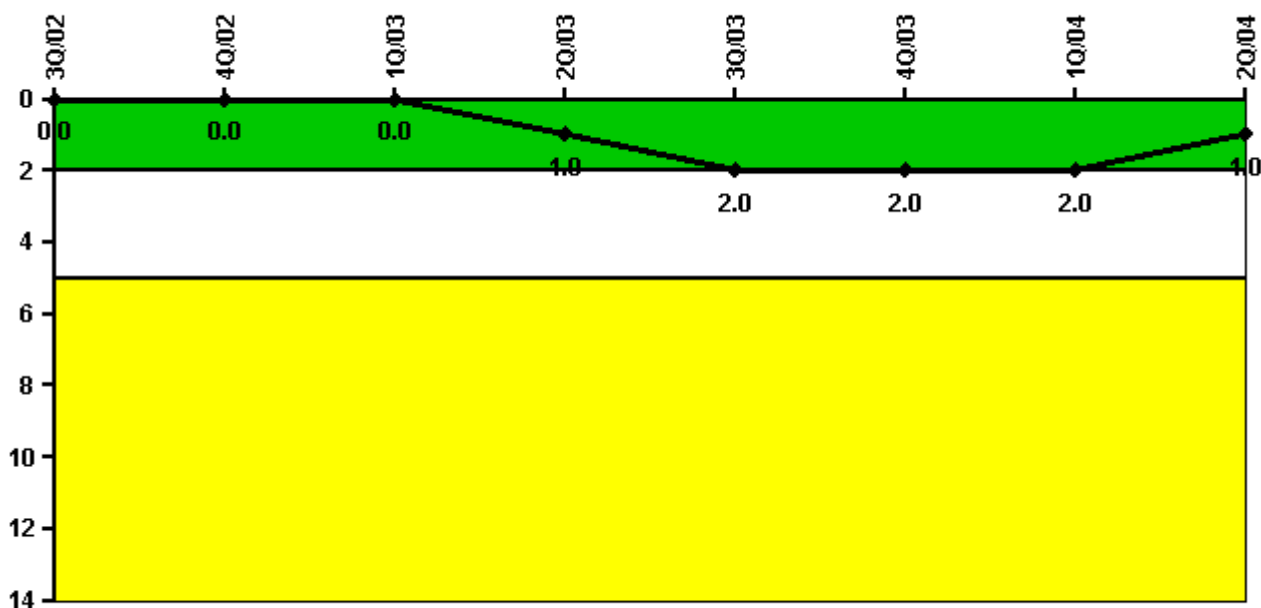
Thresholds: White < 94.0% Yellow < 90.0%

#### Notes

Alert & Notification System	3Q/02	4Q/02	1Q/03	2Q/03	3Q/03	4Q/03	1Q/04	2Q/04
Successful siren-tests	286	319	286	286	286	340	286	286
Total sirens-tests	286	319	286	286	286	341	286	286
Indicator value	100.0%	100.0%	100.0%	100.0%	100.0%	99.9%	99.9%	99.9%

Licensee Comments: none

### Occupational Exposure Control Effectiveness



Thresholds: White > 2.0 Yellow > 5.0

#### Notes

Occupational Exposure Control Effectiveness	3Q/02	4Q/02	1Q/03	2Q/03	3Q/03	4Q/03	1Q/04	2Q/04
High radiation area occurrences	0	0	0	1	1	0	0	0
Very high radiation area occurrences	0	0	0	0	0	0	0	0
Unintended exposure occurrences	0	0	0	0	0	0	0	0
<b>Indicator value</b>	<b>0</b>	<b>0</b>	<b>0</b>	<b>1</b>	<b>2</b>	<b>2</b>	<b>2</b>	<b>1</b>

Licensee Comments:

2Q/04: NRC Inspection resulted in identification of one potential High Radiation Area occurrence from an event in July 2003. This occurrence has been added to the database in the appropriate calendar quarter.

### RETS/ODCM Radiological Effluent



Thresholds: White > 1.0 Yellow > 3.0

#### Notes

RETS/ODCM Radiological Effluent	3Q/02	4Q/02	1Q/03	2Q/03	3Q/03	4Q/03	1Q/04	2Q/04
RETS/ODCM occurrences	0	0	0	0	0	0	0	0
Indicator value	0	0	0	0	0	0	0	0

Licensee Comments: none

[Physical Protection](#) information not publicly available.

▲ [Action Matrix Summary](#) | [Inspection Findings Summary](#) | [PI Summary](#) | [Reactor Oversight Process](#)

Last Modified: September 8, 2004