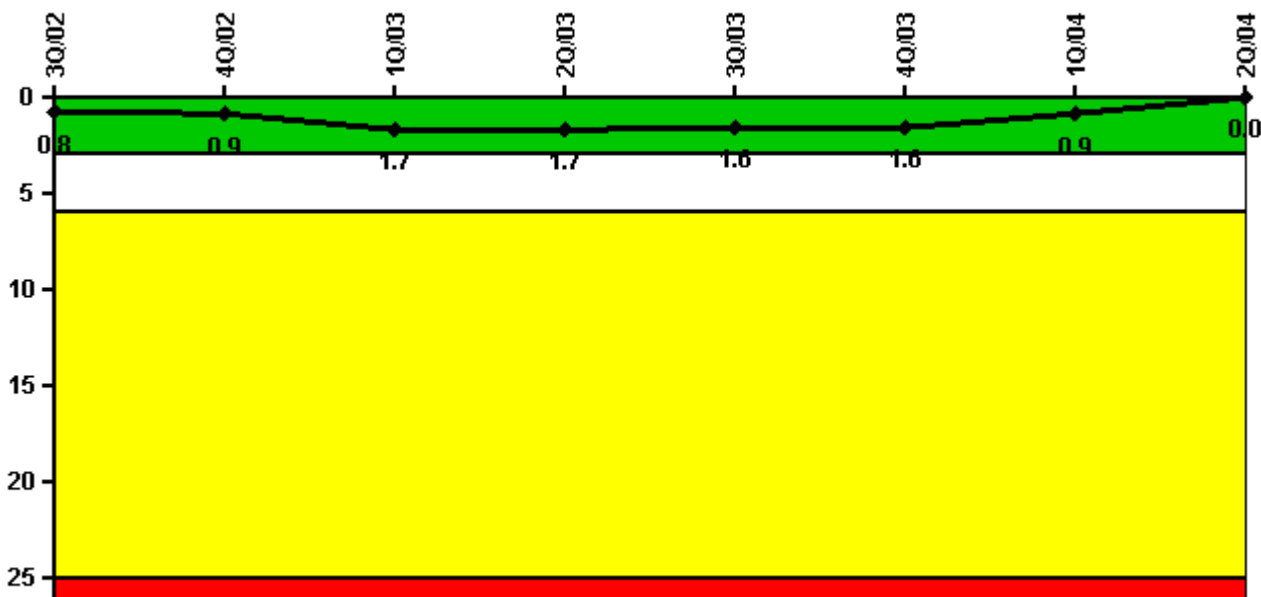


# Grand Gulf 1

## 2Q/2004 Performance Indicators

Licensee's General Comments: none

### Unplanned Scrams per 7000 Critical Hrs



Thresholds: White > 3.0 Yellow > 6.0 Red > 25.0

### Notes

Unplanned Scrams per 7000 Critical Hrs	3Q/02	4Q/02	1Q/03	2Q/03	3Q/03	4Q/03	1Q/04	2Q/04
Unplanned scrams	0	0	1.0	1.0	0	0	0	0
Critical hours	1796.0	2109.0	2133.6	2091.1	2208.0	2209.0	1500.5	2183.0
Indicator value	0.8	0.9	1.7	1.7	1.6	1.6	0.9	0

Licensee Comments: none

### Scrams with Loss of Normal Heat Removal



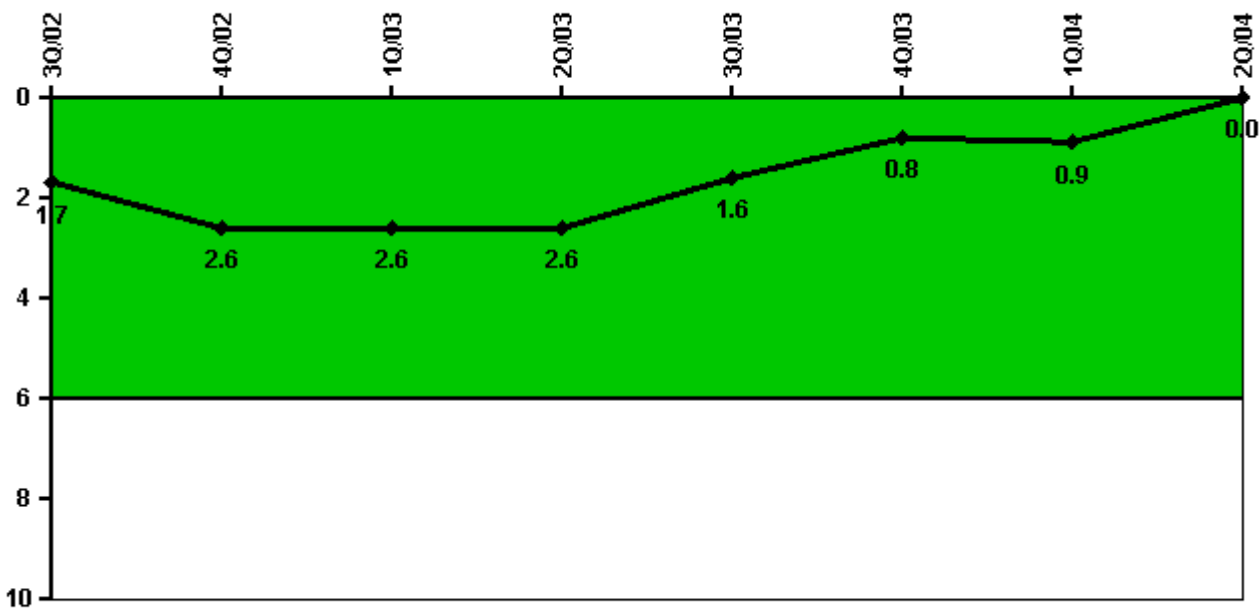
Thresholds: White > 2.0 Yellow > 10.0 Red > 20.0

#### Notes

Scrams with Loss of Normal Heat Removal	3Q/02	4Q/02	1Q/03	2Q/03	3Q/03	4Q/03	1Q/04	2Q/04
Scrams	0	0	0	0	0	0	0	0
Indicator value	1.0	1.0	1.0	1.0	1.0	1.0	1.0	1.0

Licensee Comments: none

### Unplanned Power Changes per 7000 Critical Hrs



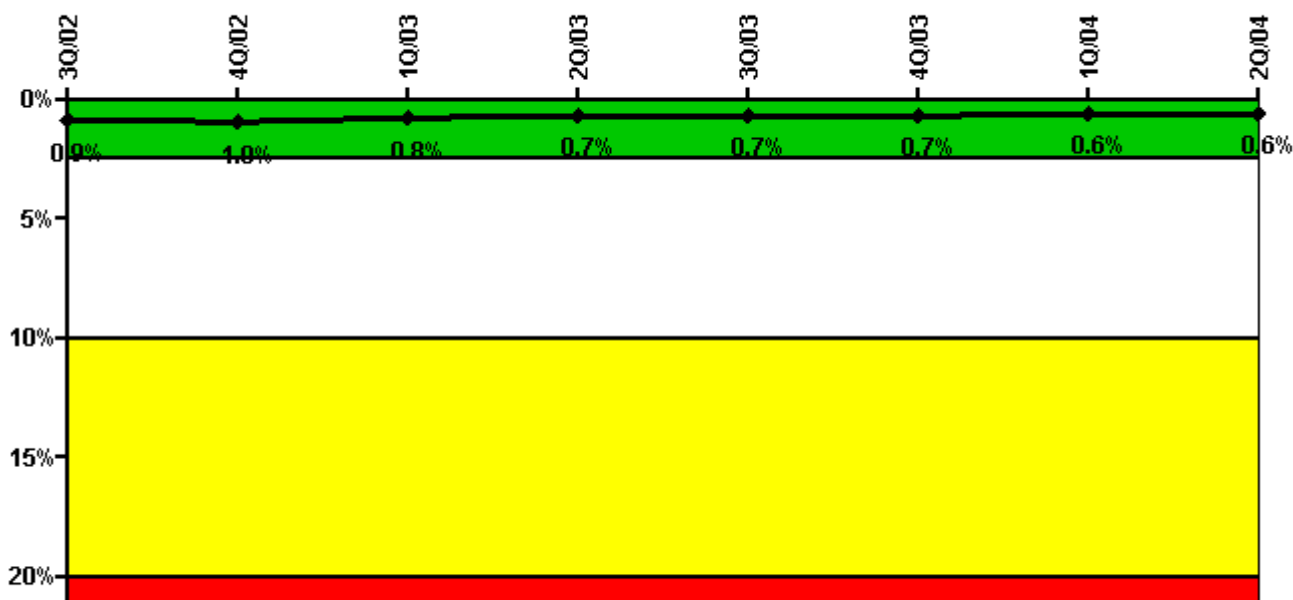
Thresholds: White > 6.0

#### Notes

Unplanned Power Changes per 7000 Critical Hrs	3Q/02	4Q/02	1Q/03	2Q/03	3Q/03	4Q/03	1Q/04	2Q/04
Unplanned power changes	1.0	1.0	0	1.0	0	0	0	0
Critical hours	1796.0	2109.0	2133.6	2091.1	2208.0	2209.0	1500.5	2183.0
Indicator value	1.7	2.6	2.6	2.6	1.6	0.8	0.9	0

Licensee Comments: none

### Safety System Unavailability, Emergency AC Power, >2EDG



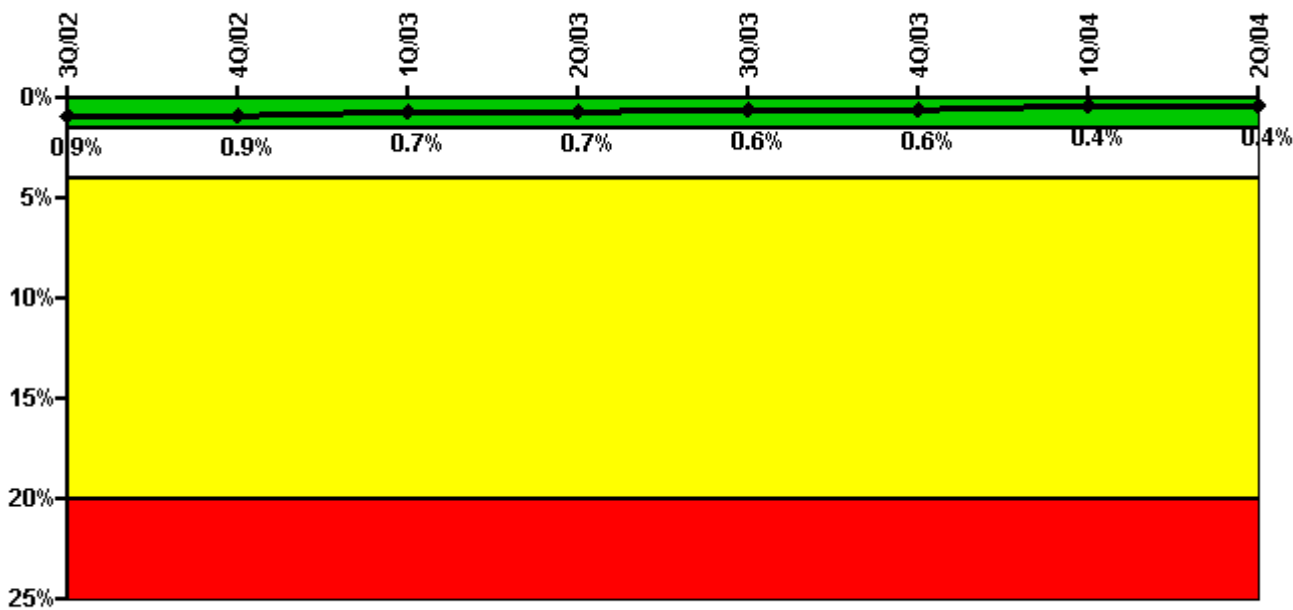
Thresholds: White > 2.5% Yellow > 10.0% Red > 20.0%

#### Notes

Safety System Unavailability, Emergency AC Power, >2EDG	3Q/02	4Q/02	1Q/03	2Q/03	3Q/03	4Q/03	1Q/04	2Q/04
<b>Train 1</b>								
Planned unavailable hours	0.69	7.99	6.58	11.30	21.27	1.44	13.77	0.82
Unplanned unavailable hours	11.45	41.38	0	0	0	0	0	35.57
Fault exposure hours	0	0	0	0	0	0	0	0
Effective Reset hours	0	0	0	0	0	0	0	0
Required hours	2208.00	2209.00	2160.00	2183.00	2208.00	2209.00	2184.00	2183.00
<b>Train 2</b>								
Planned unavailable hours	1.56	8.28	25.25	1.26	19.55	19.52	1.06	0.70
Unplanned unavailable hours	0	8.88	1.18	0	0	0	0	0
Fault exposure hours	0	0	0	0	0	0	0	0
Effective Reset hours	0	0	0	0	0	0	0	0
Required hours	2208.00	2209.00	2160.00	2183.00	2208.00	2209.00	2184.00	2183.00
<b>Train 3</b>								
Planned unavailable hours	0.46	1.22	7.86	7.17	16.13	2.70	8.57	1.43
Unplanned unavailable hours	0	0	0	2.10	0	0	0	0
Fault exposure hours	0	0	0	0	0	0	0	0
Effective Reset hours	0	0	0	0	0	0	0	0
Required hours	2208.00	2209.00	2160.00	2183.00	2208.00	2209.00	2184.00	2183.00
<b>Indicator value</b>	<b>0.9%</b>	<b>1.0%</b>	<b>0.8%</b>	<b>0.7%</b>	<b>0.7%</b>	<b>0.7%</b>	<b>0.6%</b>	<b>0.6%</b>

Licensee Comments: none

### Safety System Unavailability, High Pressure Injection System (HPCS)



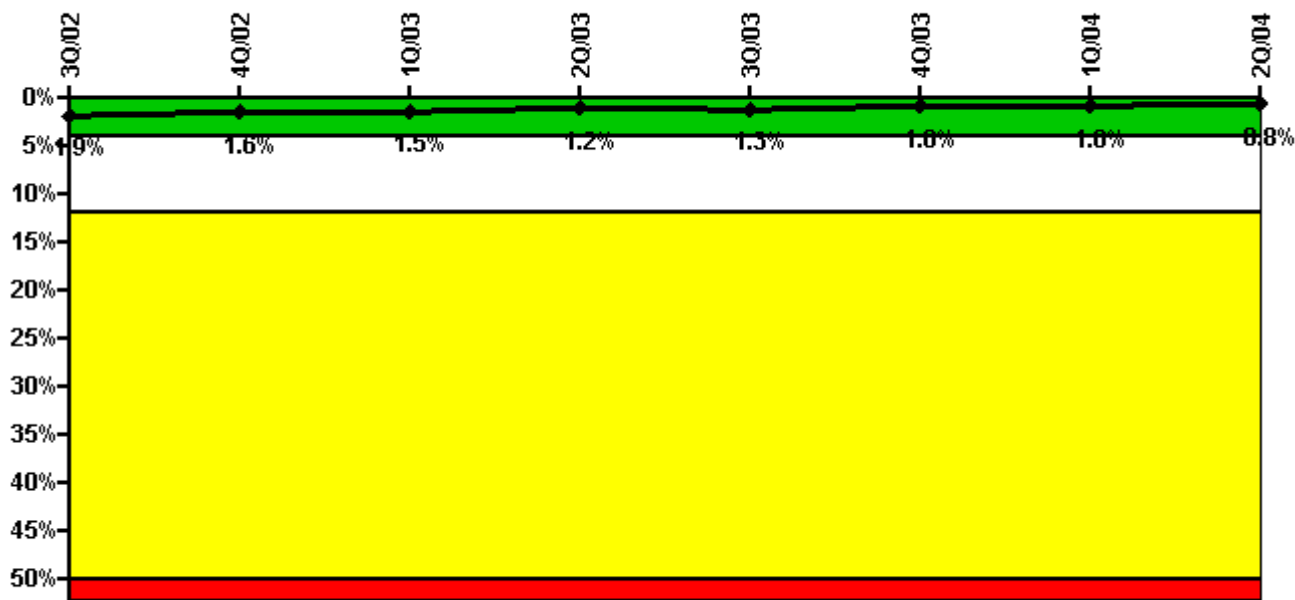
Thresholds: White > 1.5% Yellow > 4.0% Red > 20.0%

#### Notes

Safety System Unavailability, High Pressure Injection System (HPCS)	3Q/02	4Q/02	1Q/03	2Q/03	3Q/03	4Q/03	1Q/04	2Q/04
<b>Train 1</b>								
Planned unavailable hours	18.56	2.08	3.81	1.99	3.30	1.40	0.65	5.30
Unplanned unavailable hours	0	0	0	0	0	0	0	0
Fault exposure hours	0	0	0	0	0	0	0	0
Effective Reset hours	0	0	0	0	0	0	0	0
Required hours	1796.00	2109.00	2133.60	2091.10	2208.00	2209.00	1500.48	2183.00
<b>Indicator value</b>	<b>0.9%</b>	<b>0.9%</b>	<b>0.7%</b>	<b>0.7%</b>	<b>0.6%</b>	<b>0.6%</b>	<b>0.4%</b>	<b>0.4%</b>

Licensee Comments: none

### Safety System Unavailability, Heat Removal System (RCIC)



Thresholds: White > 4.0% Yellow > 12.0% Red > 50.0%

#### Notes

Safety System Unavailability, Heat Removal System (RCIC)	3Q/02	4Q/02	1Q/03	2Q/03	3Q/03	4Q/03	1Q/04	2Q/04
<b>Train 1</b>								
Planned unavailable hours	6.43	20.13	5.51	4.23	12.74	11.35	12.12	4.09
Unplanned unavailable hours	0	3.42	0	0	0	0	0	0
Fault exposure hours	0	0	0	0	0	0	0	0
Effective Reset hours	0	0	0	0	0	0	0	0
Required hours	1796.00	2109.00	2133.60	2091.10	2208.00	2209.00	1500.48	2183.00
<b>Indicator value</b>	<b>1.9%</b>	<b>1.6%</b>	<b>1.5%</b>	<b>1.2%</b>	<b>1.3%</b>	<b>1.0%</b>	<b>1.0%</b>	<b>0.8%</b>

Licensee Comments: none

### Safety System Unavailability, Residual Heat Removal System



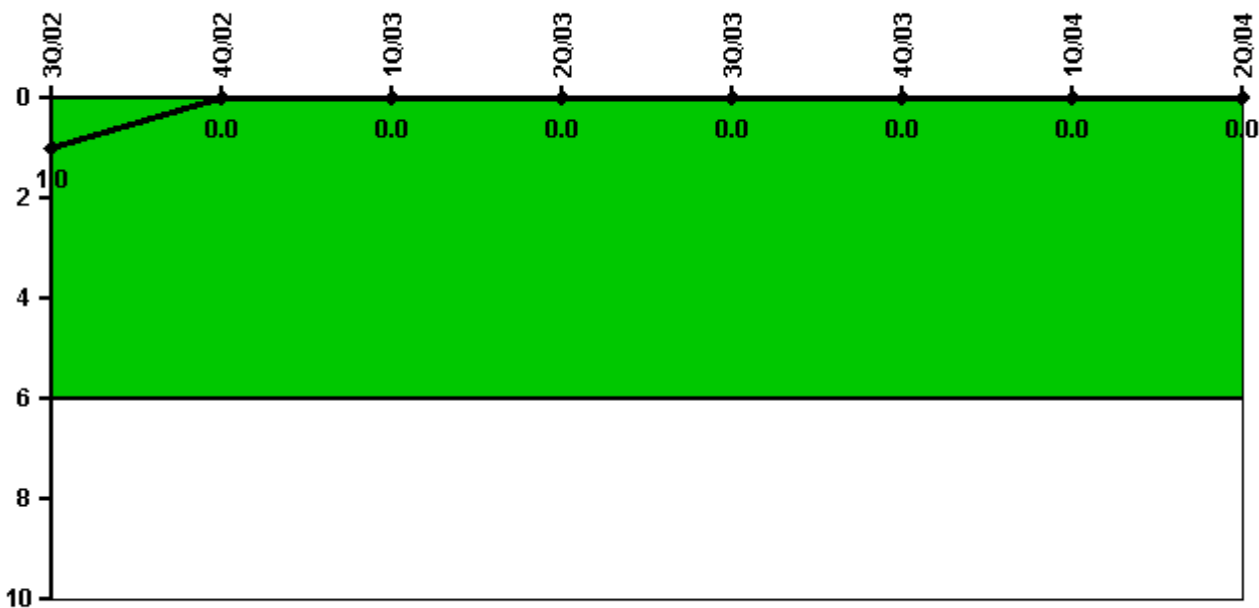
Thresholds: White > 1.5% Yellow > 5.0% Red > 10.0%

#### Notes

Safety System Unavailability, Residual Heat Removal System	3Q/02	4Q/02	1Q/03	2Q/03	3Q/03	4Q/03	1Q/04	2Q/04
<b>Train 1</b>								
Planned unavailable hours	19.84	14.33	12.69	12.42	46.38	3.68	13.02	6.80
Unplanned unavailable hours	3.77	0	0	0	0	0	0	0
Fault exposure hours	0	0	0	0	0	0	0	0
Effective Reset hours	0	0	0	0	0	0	0	0
Required hours	2208.00	2209.00	2160.00	2183.00	2208.00	2209.00	2184.00	2183.00
<b>Train 2</b>								
Planned unavailable hours	5.02	43.58	16.88	2.83	16.02	3.85	3.52	60.00
Unplanned unavailable hours	3.32	12.88	1.12	0	0	0	0	0
Fault exposure hours	0	0	0	0	0	0	0	0
Effective Reset hours	0	0	0	0	0	0	0	0
Required hours	2208.00	2209.00	2160.00	2183.00	2208.00	2209.00	2184.00	2183.00
<b>Indicator value</b>	<b>0.8%</b>	<b>0.9%</b>	<b>0.9%</b>	<b>0.8%</b>	<b>0.8%</b>	<b>0.8%</b>	<b>0.8%</b>	<b>0.8%</b>

Licensee Comments: none

### Safety System Functional Failures (BWR)



Thresholds: White > 6.0

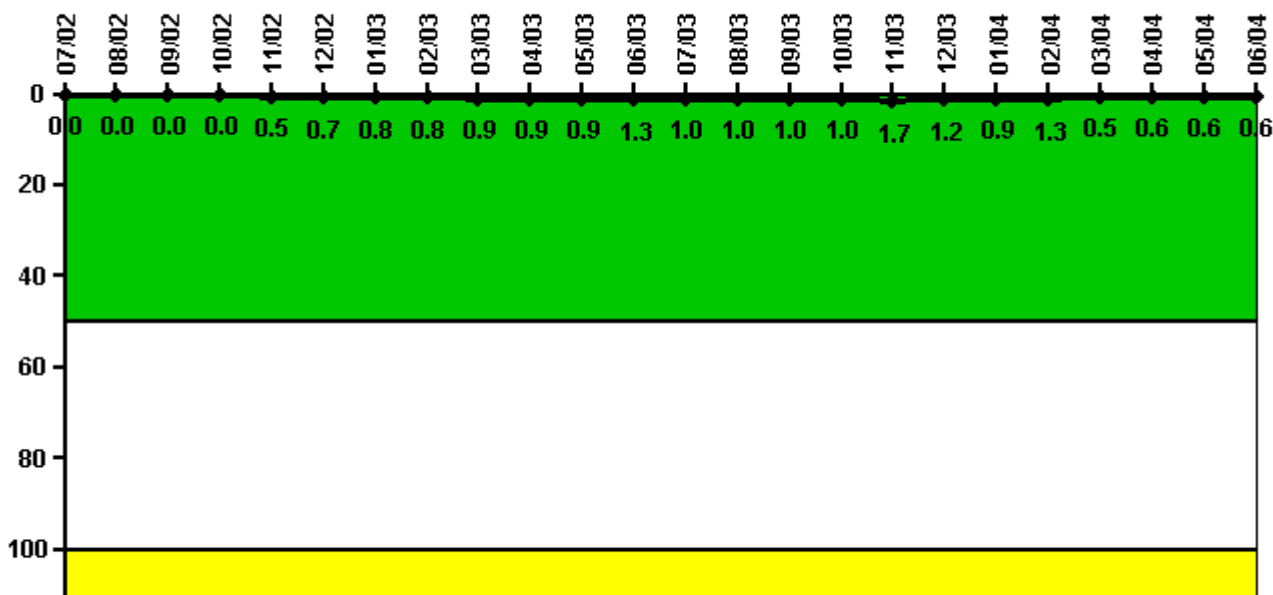
#### Notes

Safety System Functional Failures (BWR)	3Q/02	4Q/02	1Q/03	2Q/03	3Q/03	4Q/03	1Q/04	2Q/04
Safety System Functional Failures	0	0	0	0	0	0	0	0
Indicator value	1	0	0	0	0	0	0	0

Licensee Comments: none



### Reactor Coolant System Activity



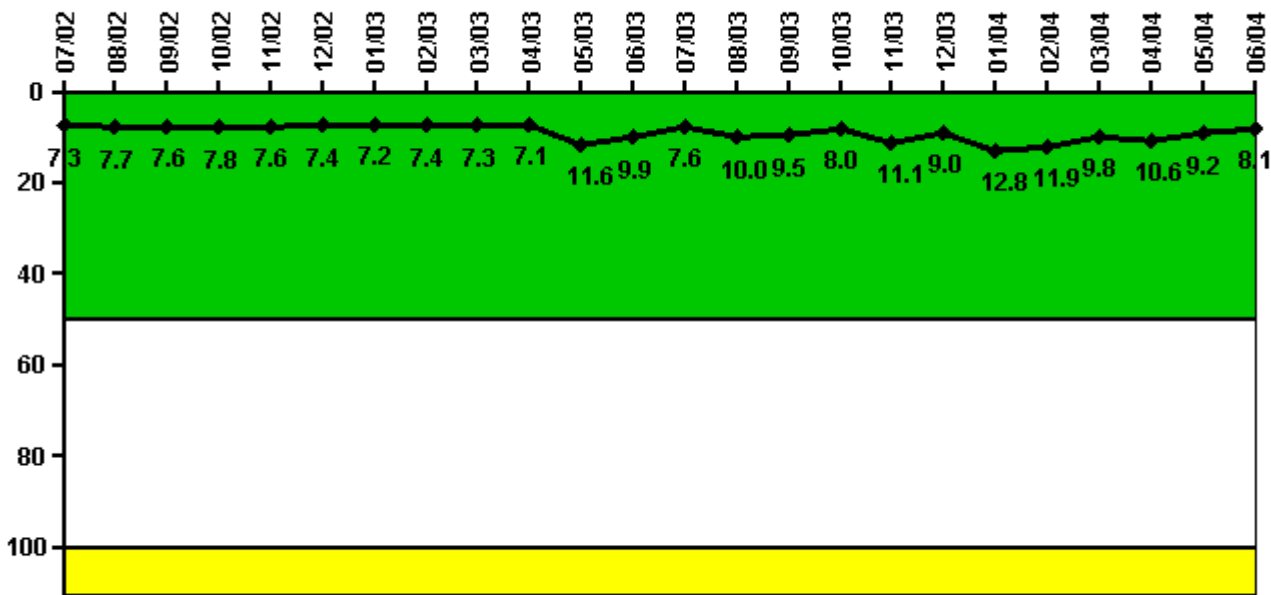
Thresholds: White > 50.0 Yellow > 100.0

#### Notes

Reactor Coolant System Activity	7/02	8/02	9/02	10/02	11/02	12/02	1/03	2/03	3/03	4/03	5/03	6/03
Maximum activity	0.000027	0.000029	0.000025	0.000015	0.001080	0.001440	0.001610	0.001660	0.001810	0.001760	0.001870	0.002510
Technical specification limit	0.2	0.2	0.2	0.2	0.2	0.2	0.2	0.2	0.2	0.2	0.2	0.2
Indicator value	0	0	0	0	0.5	0.7	0.8	0.8	0.9	0.9	0.9	1.3
Reactor Coolant System Activity	7/03	8/03	9/03	10/03	11/03	12/03	1/04	2/04	3/04	4/04	5/04	6/04
Maximum activity	0.002080	0.002060	0.001980	0.002020	0.003440	0.002350	0.001800	0.002590	0.000905	0.001140	0.001230	0.001280
Technical specification limit	0.2	0.2	0.2	0.2	0.2	0.2	0.2	0.2	0.2	0.2	0.2	0.2
Indicator value	1.0	1.0	1.0	1.0	1.7	1.2	0.9	1.3	0.5	0.6	0.6	0.6

Licensee Comments: none

### Reactor Coolant System Leakage



Thresholds: White > 50.0 Yellow > 100.0

#### Notes

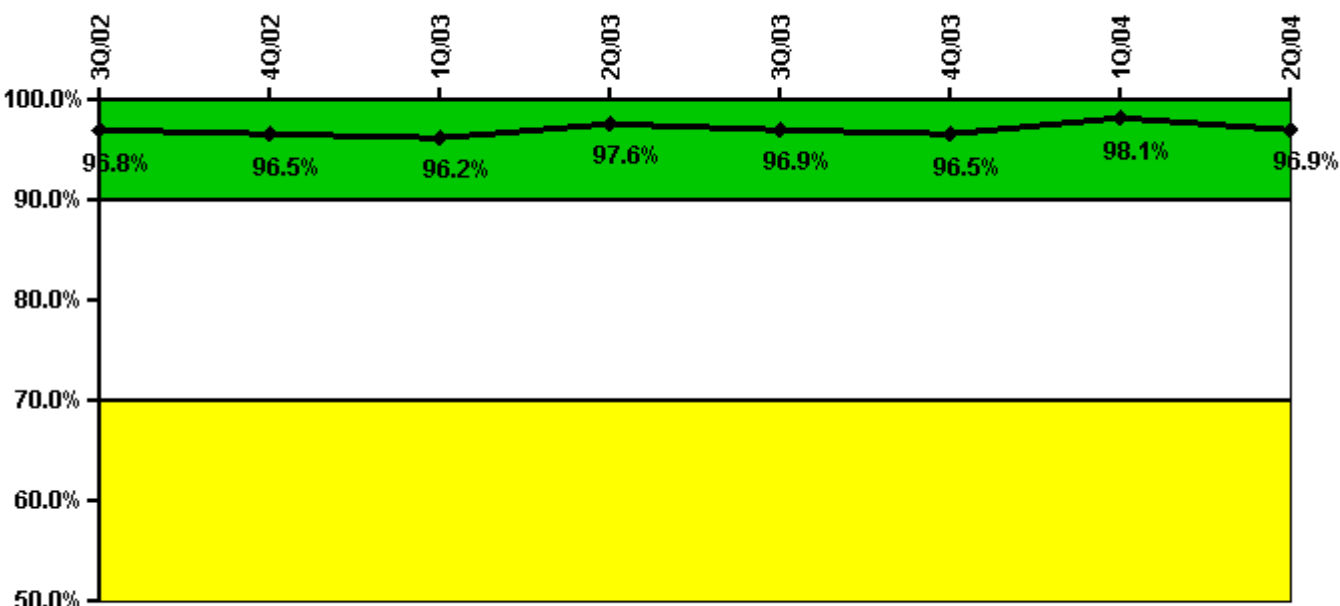
Reactor Coolant System Leakage	7/02	8/02	9/02	10/02	11/02	12/02	1/03	2/03	3/03	4/03	5/03	6/03
Maximum leakage	2.190	2.310	2.270	2.330	2.290	2.210	2.165	2.205	2.190	2.123	3.480	2.980
Technical specification limit	30.0	30.0	30.0	30.0	30.0	30.0	30.0	30.0	30.0	30.0	30.0	30.0
Indicator value	7.3	7.7	7.6	7.8	7.6	7.4	7.2	7.4	7.3	7.1	11.6	9.9

Reactor Coolant System Leakage	7/03	8/03	9/03	10/03	11/03	12/03	1/04	2/04	3/04	4/04	5/04	6/04
Maximum leakage	2.290	3.010	2.840	2.410	3.320	2.700	3.850	3.580	2.950	3.170	2.760	2.440
Technical specification limit	30.0	30.0	30.0	30.0	30.0	30.0	30.0	30.0	30.0	30.0	30.0	30.0
Indicator value	7.6	10.0	9.5	8.0	11.1	9.0	12.8	11.9	9.8	10.6	9.2	8.1

Licensee Comments: none

### Drill/Exercise Performance



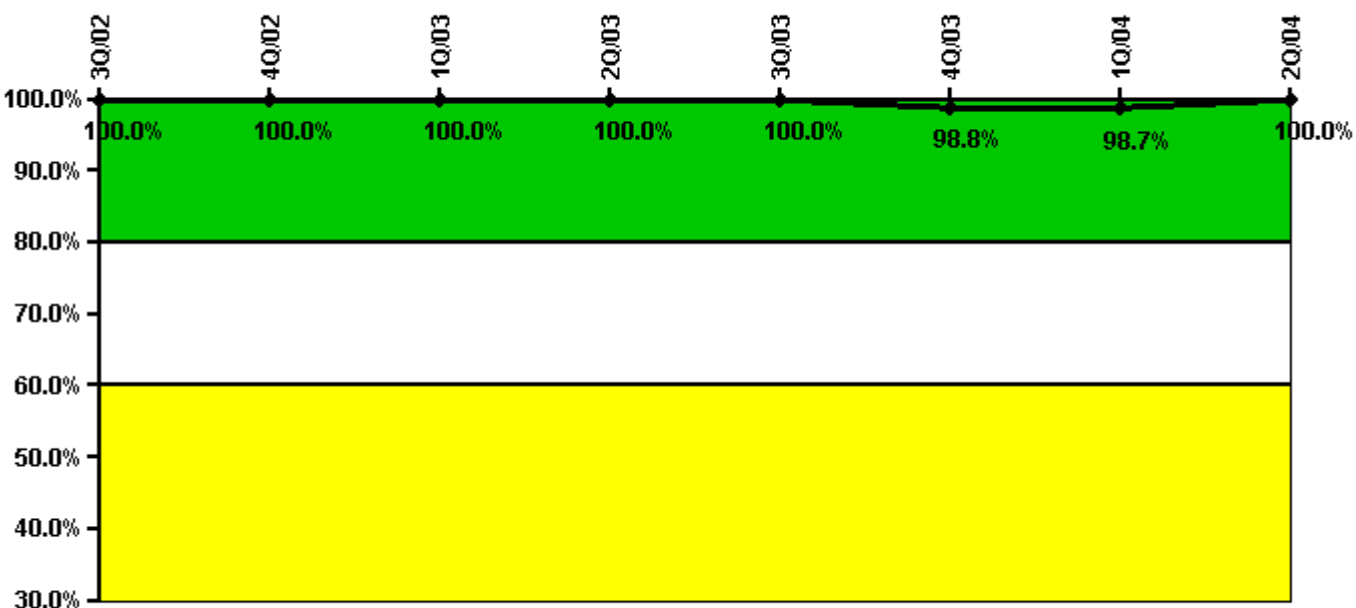
Thresholds: White < 90.0% Yellow < 70.0%

#### Notes

Drill/Exercise Performance	3Q/02	4Q/02	1Q/03	2Q/03	3Q/03	4Q/03	1Q/04	2Q/04
Successful opportunities	10.0	18.0	10.0	7.0	31.0	12.0	0	38.0
Total opportunities	10.0	18.0	10.0	8.0	32.0	12.0	0	40.0
Indicator value	96.8%	96.5%	96.2%	97.6%	96.9%	96.5%	98.1%	96.9%

Licensee Comments: none

### ERO Drill Participation



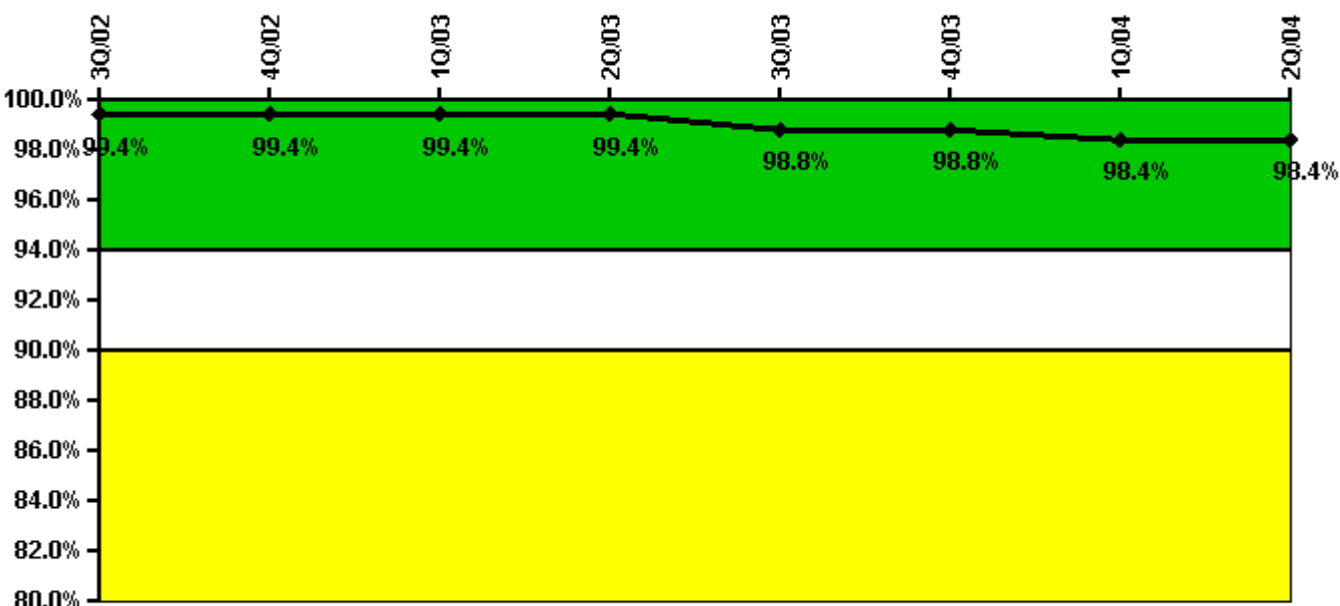
Thresholds: White < 80.0% Yellow < 60.0%

#### Notes

ERO Drill Participation	3Q/02	4Q/02	1Q/03	2Q/03	3Q/03	4Q/03	1Q/04	2Q/04
Participating Key personnel	77.0	81.0	81.0	80.0	81.0	82.0	76.0	77.0
Total Key personnel	77.0	81.0	81.0	80.0	81.0	83.0	77.0	77.0
Indicator value	100.0%	100.0%	100.0%	100.0%	100.0%	98.8%	98.7%	100.0%

Licensee Comments: none

### Alert & Notification System



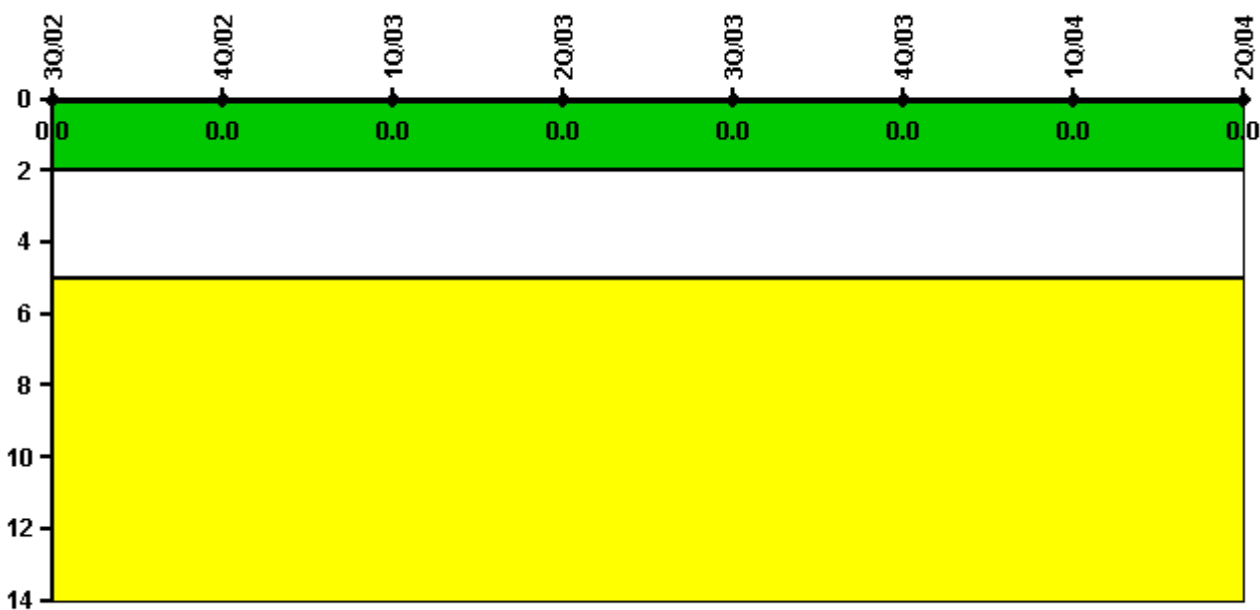
Thresholds: White < 94.0% Yellow < 90.0%

#### Notes

Alert & Notification System	3Q/02	4Q/02	1Q/03	2Q/03	3Q/03	4Q/03	1Q/04	2Q/04
Successful siren-tests	127	129	129	128	124	129	127	128
Total sirens-tests	129	129	129	129	129	129	129	129
Indicator value	99.4%	99.4%	99.4%	99.4%	98.8%	98.8%	98.4%	98.4%

Licensee Comments: none

### Occupational Exposure Control Effectiveness



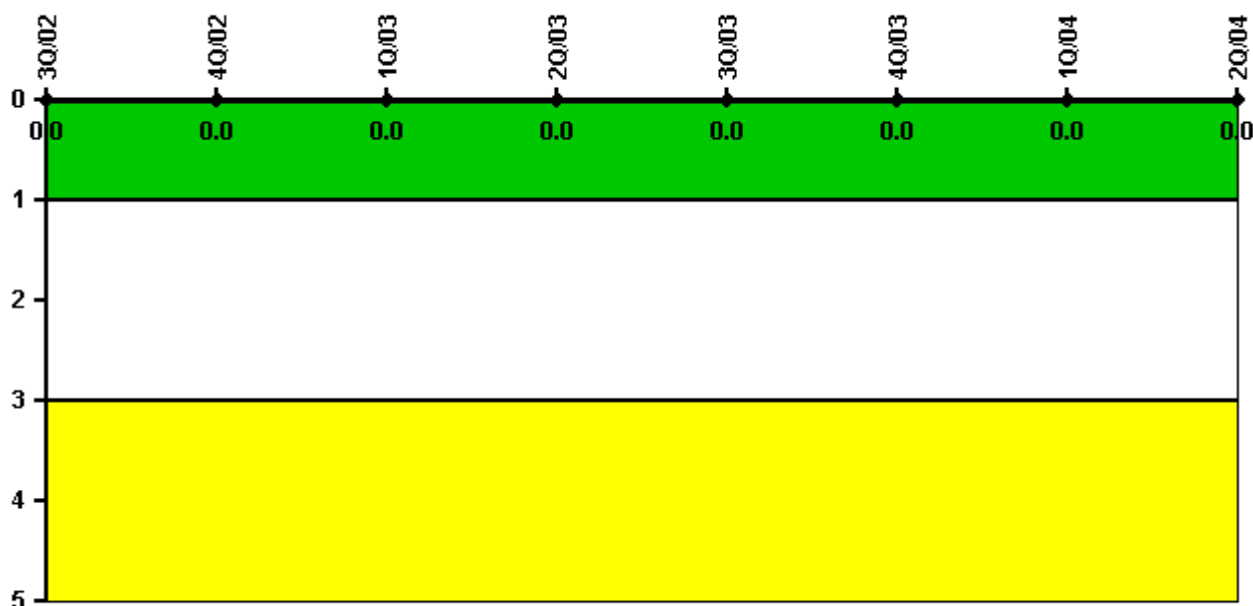
Thresholds: White > 2.0 Yellow > 5.0

#### Notes

Occupational Exposure Control Effectiveness	3Q/02	4Q/02	1Q/03	2Q/03	3Q/03	4Q/03	1Q/04	2Q/04
High radiation area occurrences	0	0	0	0	0	0	0	0
Very high radiation area occurrences	0	0	0	0	0	0	0	0
Unintended exposure occurrences	0	0	0	0	0	0	0	0
<b>Indicator value</b>	<b>0</b>	<b>0</b>	<b>0</b>	<b>0</b>	<b>0</b>	<b>0</b>	<b>0</b>	<b>0</b>

Licensee Comments: none

### RETS/ODCM Radiological Effluent



Thresholds: White > 1.0 Yellow > 3.0

#### Notes

RETS/ODCM Radiological Effluent	3Q/02	4Q/02	1Q/03	2Q/03	3Q/03	4Q/03	1Q/04	2Q/04
RETS/ODCM occurrences	0	0	0	0	0	0	0	0
Indicator value	0	0	0	0	0	0	0	0

Licensee Comments: none

[Physical Protection](#) information not publicly available.

▲ [Action Matrix Summary](#) | [Inspection Findings Summary](#) | [PI Summary](#) | [Reactor Oversight Process](#)

Last Modified: September 8, 2004