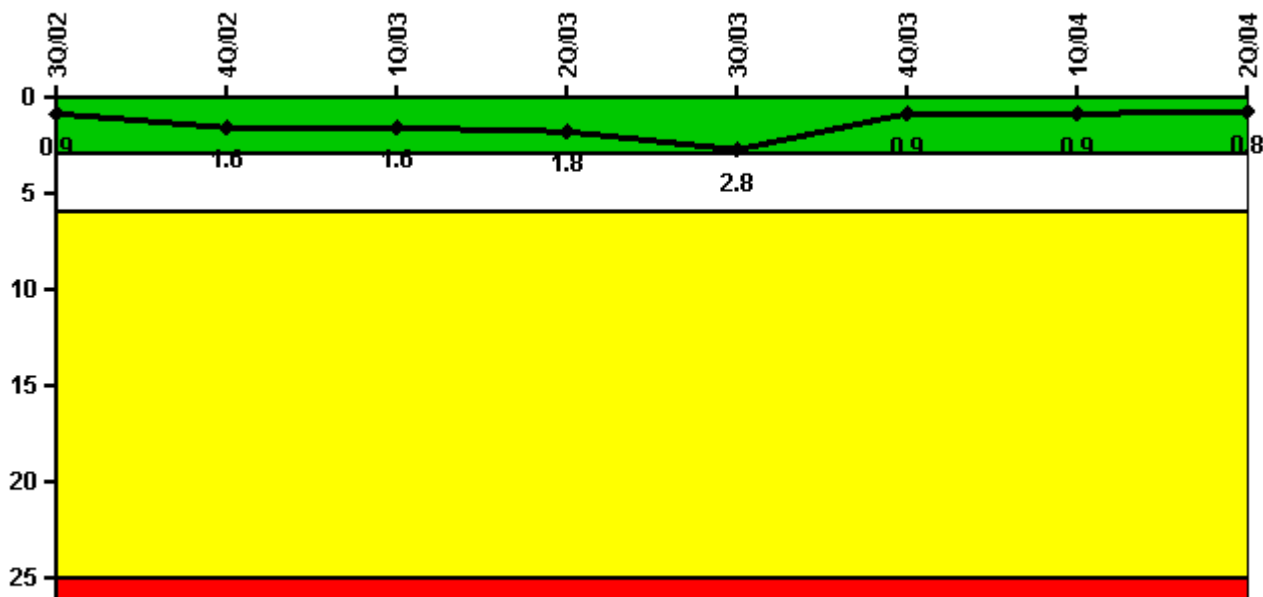


Fermi 2

2Q/2004 Performance Indicators

Licensee's General Comments: none

Unplanned Scrams per 7000 Critical Hrs



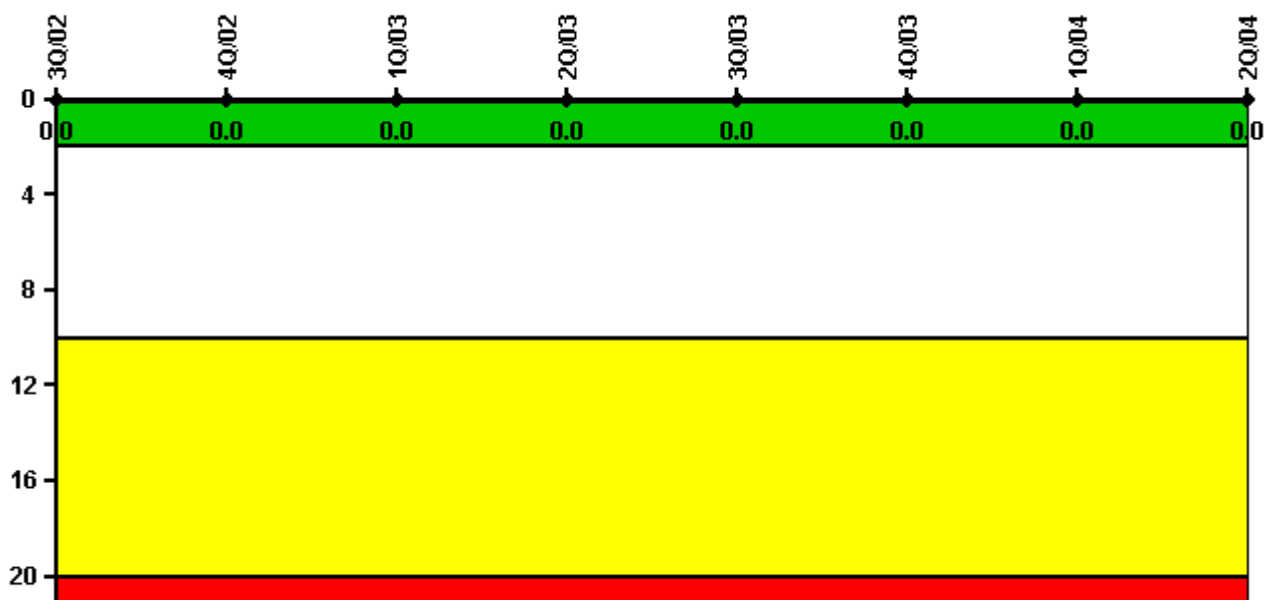
Thresholds: White > 3.0 Yellow > 6.0 Red > 25.0

Notes

Unplanned Scrams per 7000 Critical Hrs	3Q/02	4Q/02	1Q/03	2Q/03	3Q/03	4Q/03	1Q/04	2Q/04
Unplanned scrams	0	2.0	0	0	1.0	0	0	0
Critical hours	2208.0	2094.9	2086.6	1307.5	2010.5	2209.0	2184.0	2183.0
Indicator value	0.9	1.6	1.6	1.8	2.8	0.9	0.9	0.8

Licensee Comments: none

Scrams with Loss of Normal Heat Removal



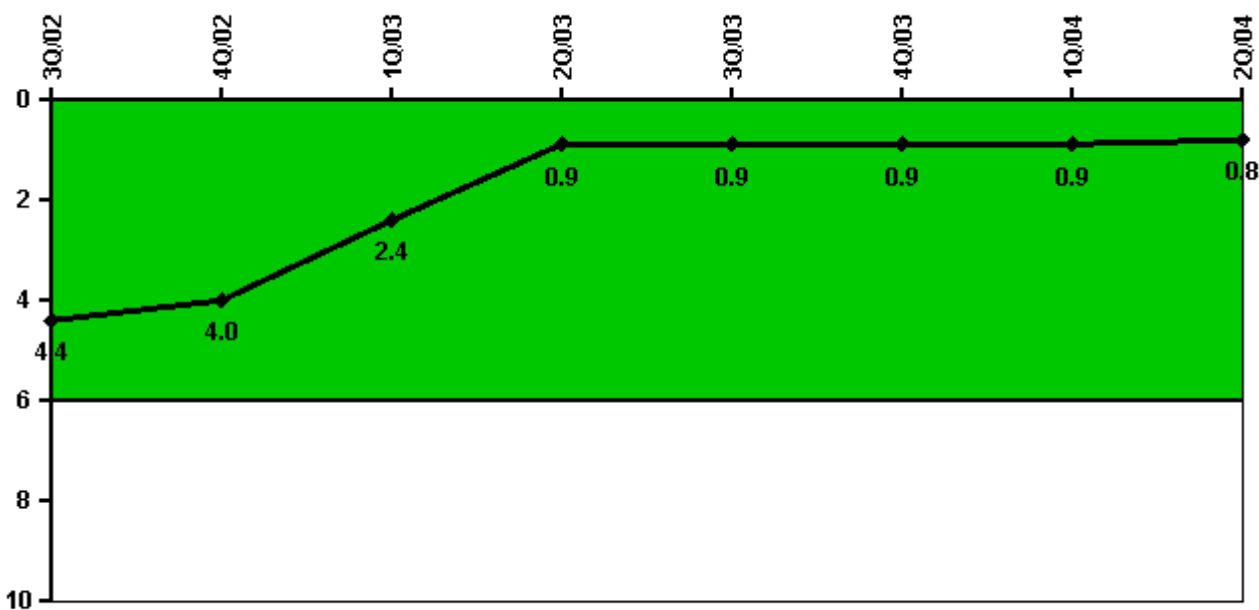
Thresholds: White > 2.0 Yellow > 10.0 Red > 20.0

Notes

Scrams with Loss of Normal Heat Removal	3Q/02	4Q/02	1Q/03	2Q/03	3Q/03	4Q/03	1Q/04	2Q/04
Scrams	0	0	0	0	0	0	0	0
Indicator value	0	0	0	0	0	0	0	0

Licensee Comments: none

Unplanned Power Changes per 7000 Critical Hrs



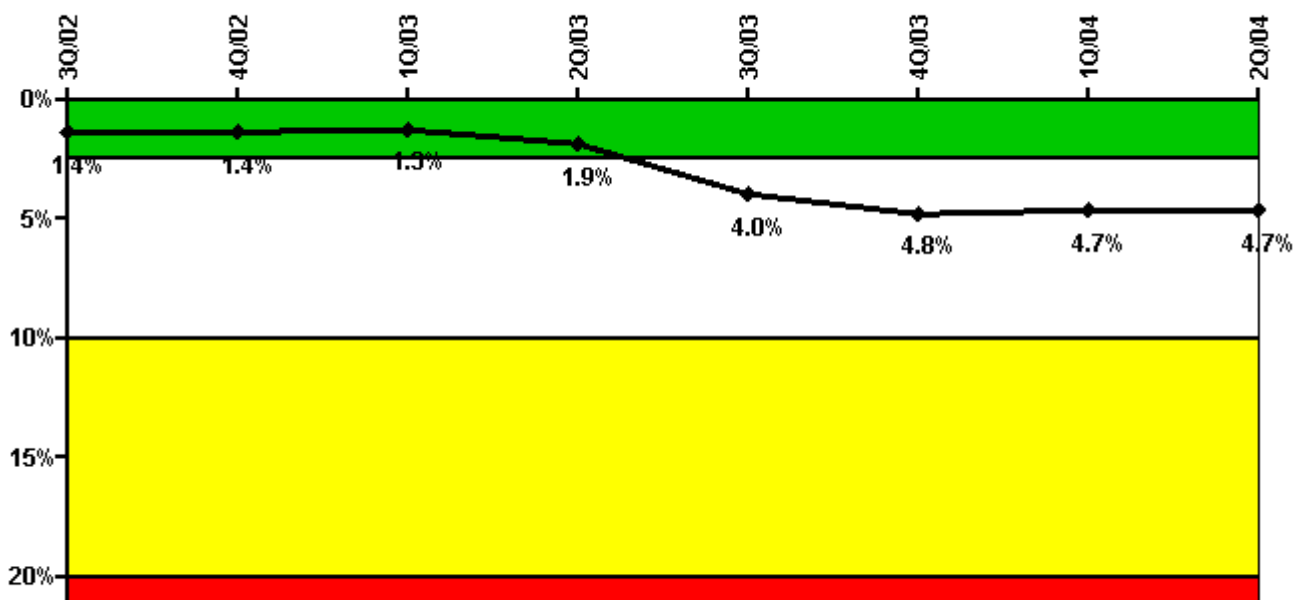
Thresholds: White > 6.0

Notes

Unplanned Power Changes per 7000 Critical Hrs	3Q/02	4Q/02	1Q/03	2Q/03	3Q/03	4Q/03	1Q/04	2Q/04
Unplanned power changes	0	0	1.0	0	0	0	1.0	0
Critical hours	2208.0	2094.9	2086.6	1307.5	2010.5	2209.0	2184.0	2183.0
Indicator value	4.4	4.0	2.4	0.9	0.9	0.9	0.9	0.8

Licensee Comments: none

Safety System Unavailability, Emergency AC Power, >2EDG



Thresholds: White > 2.5% Yellow > 10.0% Red > 20.0%

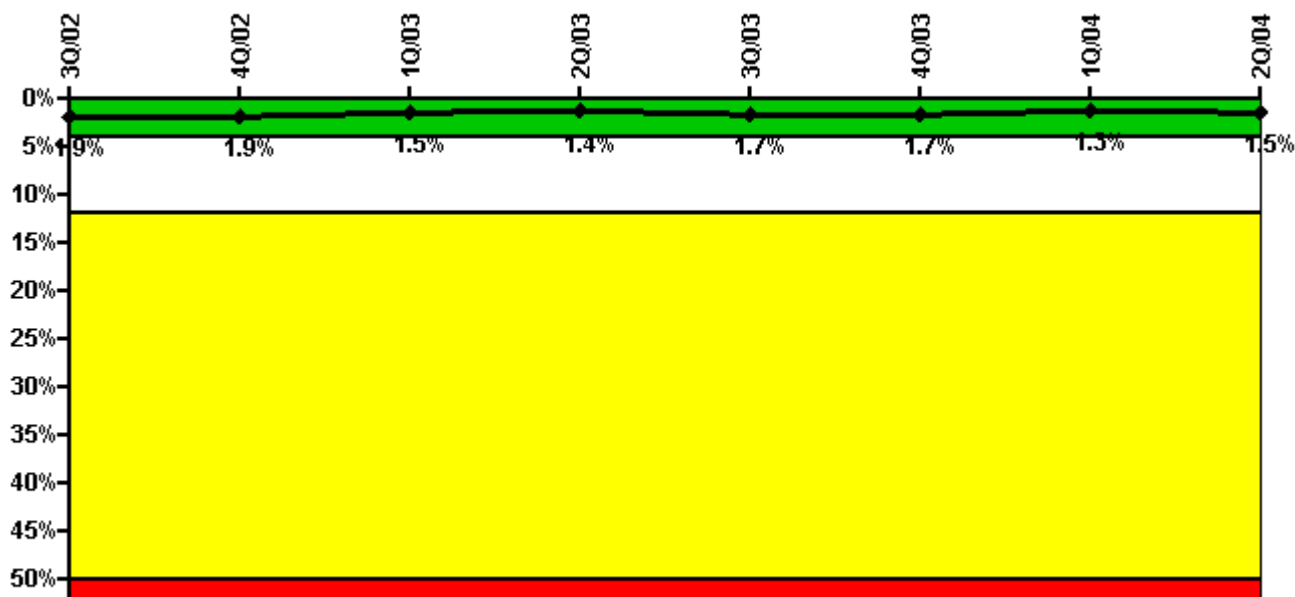
Notes

Safety System Unavailability, Emergency AC Power, >2EDG	3Q/02	4Q/02	1Q/03	2Q/03	3Q/03	4Q/03	1Q/04	2Q/04
Train 1								
Planned unavailable hours	52.76	7.04	38.03	8.15	28.15	9.52	10.00	6.70
Unplanned unavailable hours	0	0	29.82	0	0	0	0	1.27
Fault exposure hours	0	0	0	0	0	0	0	0
Effective Reset hours	0	0	0	0	0	0	0	0
Required hours	2208.00	2209.00	2160.00	2183.00	2208.00	2209.00	2184.00	2183.00
Train 2								
Planned unavailable hours	11.37	16.53	17.09	2.13	0	11.47	71.86	4.76
Unplanned unavailable hours	0	26.40	0	0	0	0	0	0
Fault exposure hours	0	0	0	694.00	2208.00	928.93	0	0
Effective Reset hours	0	0	0	0	0	0	0	0
Required hours	2208.00	2209.00	2160.00	2183.00	2208.00	2209.00	2184.00	2183.00
Train 3								
Planned unavailable hours	7.72	6.95	26.45	3.55	6.09	17.49	8.03	4.84
Unplanned unavailable hours	1.30	0	0	2.03	0	0	0	0
Fault exposure hours	0	0	0	0	0	0	0	0
Effective Reset hours	0	0	0	0	0	0	0	0
Required hours	2208.00	2209.00	2160.00	2183.00	2208.00	2209.00	2184.00	2183.00
Train 4								
Planned unavailable hours	23.22	7.74	24.71	8.61	8.17	5.63	13.07	5.91
Unplanned unavailable hours	3.94	0	0	0	0	0	0	0
Fault exposure hours	0	0	0	0	0	0	0	0
Effective Reset hours	0	0	0	0	0	0	0	0
Required hours	2208.00	2209.00	2160.00	2183.00	2208.00	2209.00	2184.00	2183.00
Indicator value	1.4%	1.4%	1.3%	1.9%	4.0%	4.8%	4.7%	4.7%

Licensor Comments:

2Q/04: Train 2 {EDG 12}: 427 T/2 fault hours assigned from 10/22/01 through 11/9/01 based on engineering review of 11/14/01 signal generator failure. This change has no effect on the current indicator value.

Safety System Unavailability, High Pressure Injection System (HPCI)



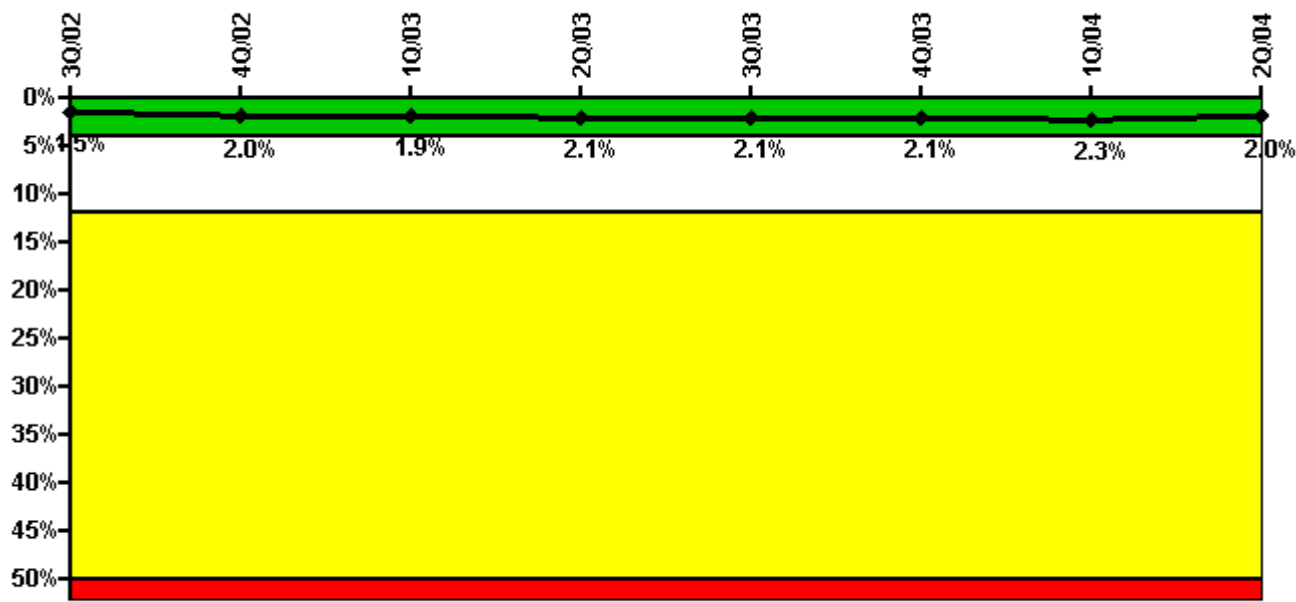
Thresholds: White > 4.0% Yellow > 12.0% Red > 50.0%

Notes

Safety System Unavailability, High Pressure Injection System (HPCI)	3Q/02	4Q/02	1Q/03	2Q/03	3Q/03	4Q/03	1Q/04	2Q/04
Train 1								
Planned unavailable hours	3.13	2.20	26.08	0	66.32	3.18	1.37	73.04
Unplanned unavailable hours	0	0	0	0	3.30	0	0	20.77
Fault exposure hours	0	0	0	0	0	0	0	0
Effective Reset hours	0	0	0	0	0	0	0	0
Required hours	2208.00	2094.90	2086.60	1307.50	2010.50	2209.00	2184.00	2183.00
Indicator value	1.9%	1.9%	1.5%	1.4%	1.7%	1.7%	1.3%	1.5%

Licensee Comments: none

Safety System Unavailability, Heat Removal System (RCIC)



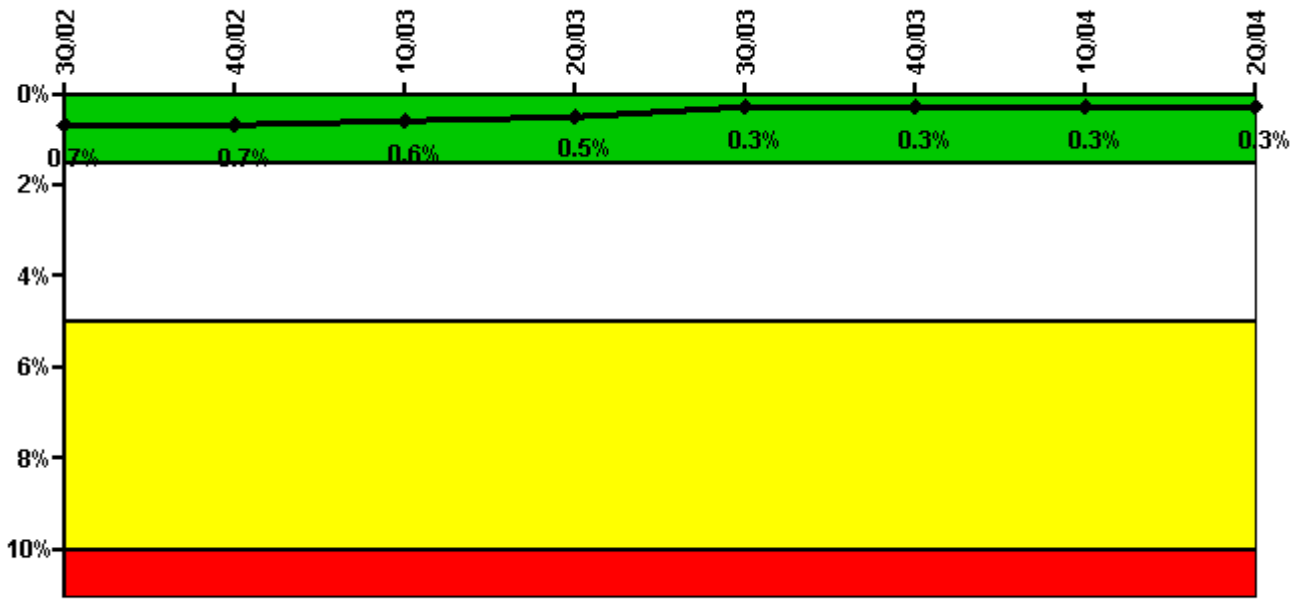
Thresholds: White > 4.0% Yellow > 12.0% Red > 50.0%

Notes

Safety System Unavailability, Heat Removal System (RCIC)	3Q/02	4Q/02	1Q/03	2Q/03	3Q/03	4Q/03	1Q/04	2Q/04
Train 1								
Planned unavailable hours	2.83	127.80	14.21	57.48	7.98	2.52	55.16	1.48
Unplanned unavailable hours	0	0	0	0	0	2.92	0	0
Fault exposure hours	0	0	0	0	0	0	0	0
Effective Reset hours	0	0	0	0	0	0	0	0
Required hours	2208.00	2094.90	2086.60	1307.50	2010.50	2209.00	2184.00	2183.00
Indicator value	1.5%	2.0%	1.9%	2.1%	2.1%	2.1%	2.3%	2.0%

Licensee Comments: none

Safety System Unavailability, Residual Heat Removal System



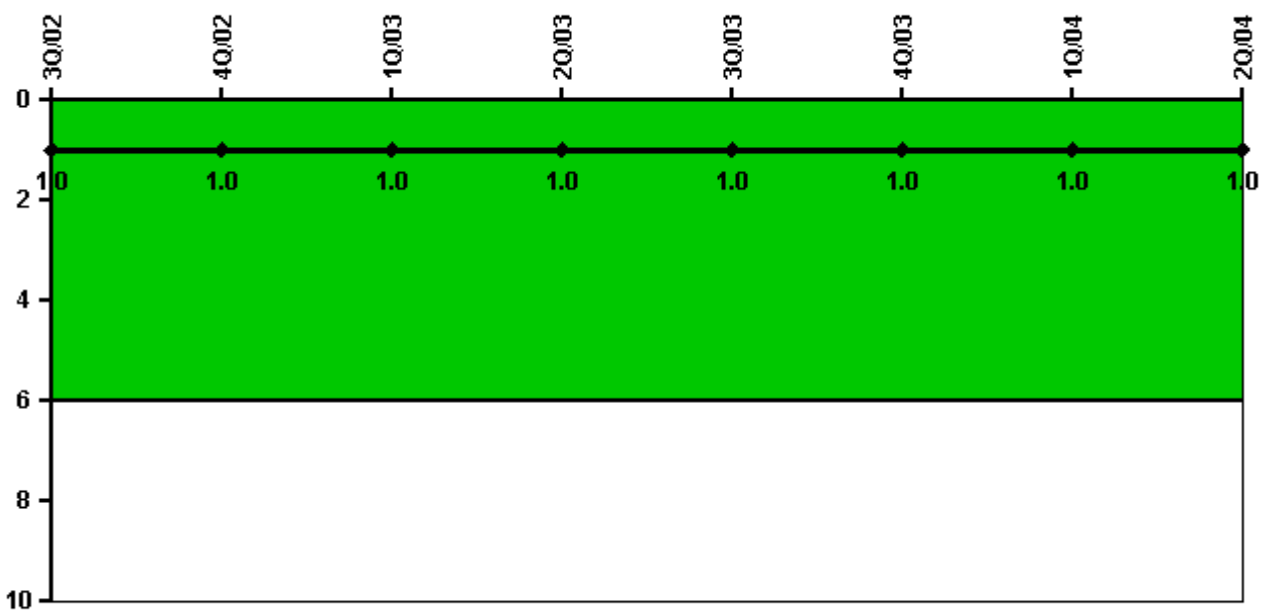
Thresholds: White > 1.5% Yellow > 5.0% Red > 10.0%

Notes

Safety System Unavailability, Residual Heat Removal System	3Q/02	4Q/02	1Q/03	2Q/03	3Q/03	4Q/03	1Q/04	2Q/04
Train 1								
Planned unavailable hours	19.08	3.13	0.88	0	13.76	0.62	1.42	0.72
Unplanned unavailable hours	0	0	0	0.65	0	0.15	0	0
Fault exposure hours	0	0	0	0	0	0	0	0
Effective Reset hours	0	0	0	0	0	0	0	0
Required hours	2208.00	2209.00	2160.00	2183.00	2208.00	2209.00	2184.00	2183.00
Train 2								
Planned unavailable hours	1.20	1.50	9.05	0	8.85	1.70	1.10	2.27
Unplanned unavailable hours	0	0	0	0	0	0	0	0
Fault exposure hours	0	0	0	0	0	0	0	0
Effective Reset hours	0	0	0	0	0	0	0	0
Required hours	2208.00	2209.00	2160.00	2183.00	2208.00	2209.00	2184.00	2183.00
Indicator value	0.7%	0.7%	0.6%	0.5%	0.3%	0.3%	0.3%	0.3%

Licensee Comments: none

Safety System Functional Failures (BWR)



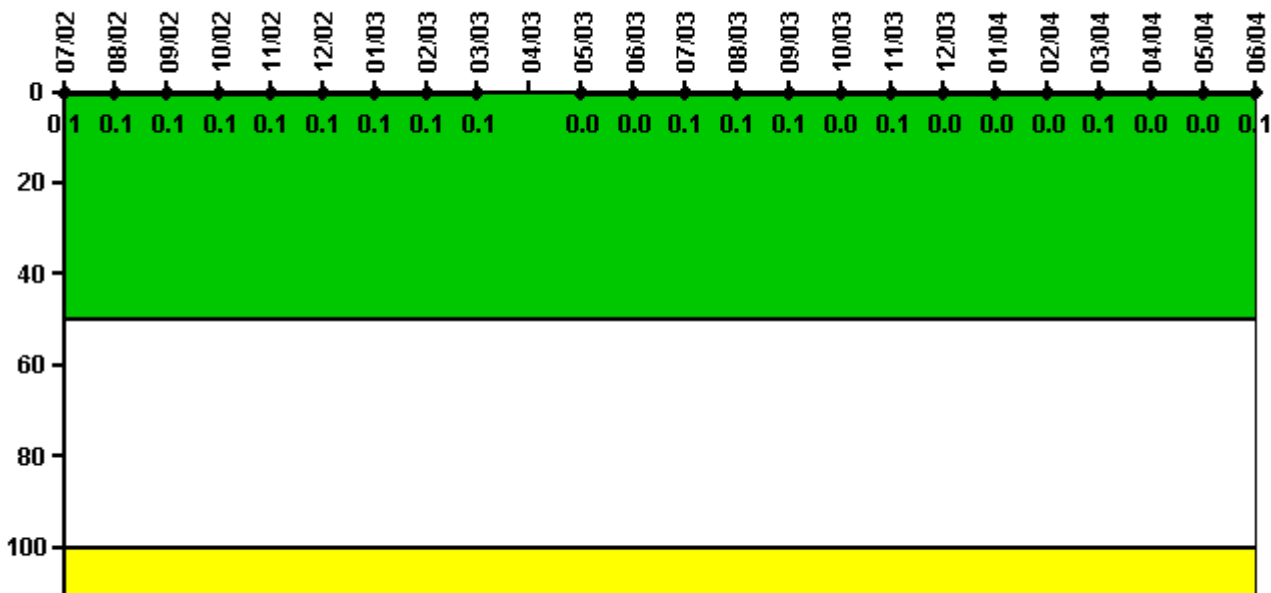
Thresholds: White > 6.0

Notes

Safety System Functional Failures (BWR)	3Q/02	4Q/02	1Q/03	2Q/03	3Q/03	4Q/03	1Q/04	2Q/04
Safety System Functional Failures	1	0	0	0	1	0	0	0
Indicator value	1	1	1	1	1	1	1	1

Licensee Comments: none

Reactor Coolant System Activity



Thresholds: White > 50.0 Yellow > 100.0

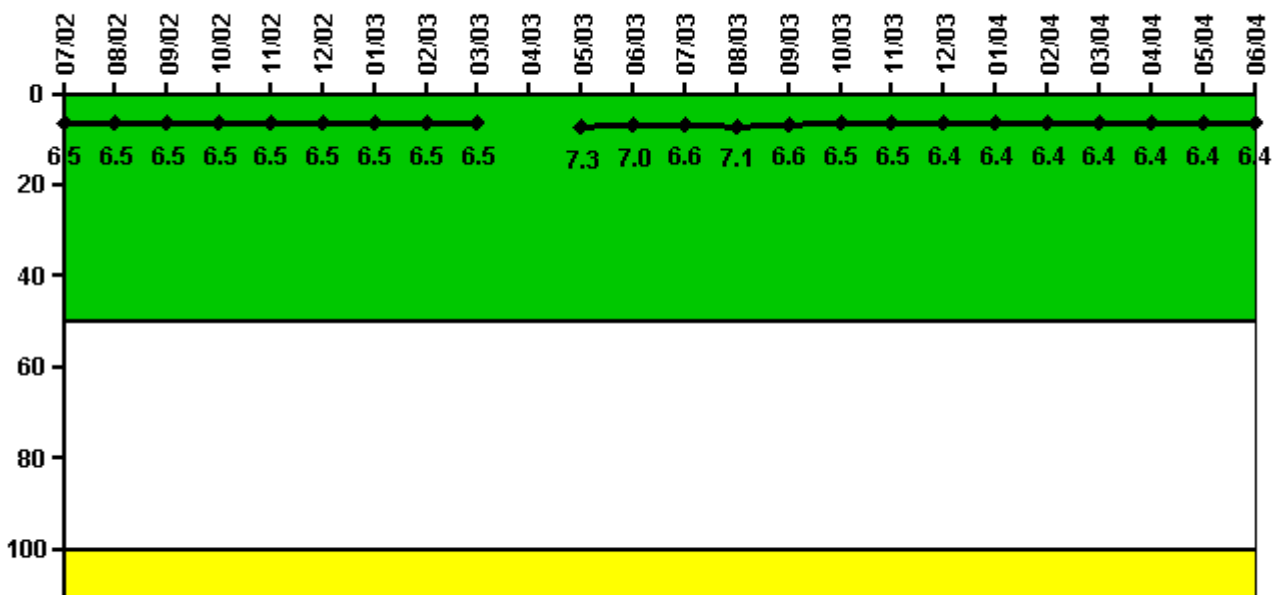
Notes

Reactor Coolant System Activity	7/02	8/02	9/02	10/02	11/02	12/02	1/03	2/03	3/03	4/03	5/03	6/03
Maximum activity	0.000208	0.000184	0.000196	0.000173	0.000211	0.000169	0.000144	0.000178	0.000168	N/A	0.000080	0.000084
Technical specification limit	0.2	0.2	0.2	0.2	0.2	0.2	0.2	0.2	0.2	0.2	0.2	0.2
Indicator value	0.1	0.1	0.1	0.1	0.1	0.1	0.1	0.1	0.1	N/A	0	0

Reactor Coolant System Activity	7/03	8/03	9/03	10/03	11/03	12/03	1/04	2/04	3/04	4/04	5/04	6/04
Maximum activity	0.000123	0.000124	0.000135	0.000092	0.000129	0.000094	0.000089	0.000094	0.000114	0.000080	0.000076	0.000125
Technical specification limit	0.2	0.2	0.2	0.2	0.2	0.2	0.2	0.2	0.2	0.2	0.2	0.2
Indicator value	0.1	0.1	0.1	0	0.1	0	0	0	0.1	0	0	0.1

Licensee Comments: none

Reactor Coolant System Leakage



Thresholds: White > 50.0 Yellow > 100.0

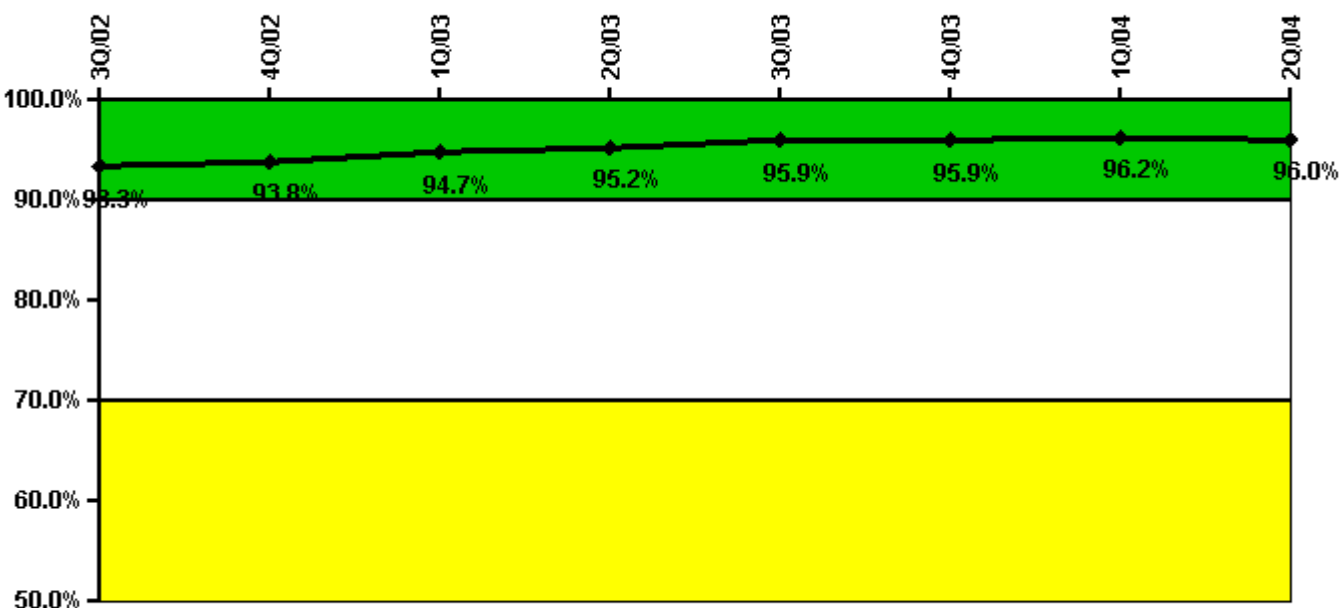
Notes

Reactor Coolant System Leakage	7/02	8/02	9/02	10/02	11/02	12/02	1/03	2/03	3/03	4/03	5/03	6/03
Maximum leakage	1.630	1.620	1.630	1.630	1.620	1.620	1.630	1.630	1.630	N/A	1.830	1.750
Technical specification limit	25.0	25.0	25.0	25.0	25.0	25.0	25.0	25.0	25.0	25.0	25.0	25.0
Indicator value	6.5	6.5	6.5	6.5	6.5	6.5	6.5	6.5	6.5	N/A	7.3	7.0

Reactor Coolant System Leakage	7/03	8/03	9/03	10/03	11/03	12/03	1/04	2/04	3/04	4/04	5/04	6/04
Maximum leakage	1.640	1.770	1.650	1.620	1.620	1.610	1.610	1.600	1.610	1.600	1.610	1.610
Technical specification limit	25.0	25.0	25.0	25.0	25.0	25.0	25.0	25.0	25.0	25.0	25.0	25.0
Indicator value	6.6	7.1	6.6	6.5	6.5	6.4	6.4	6.4	6.4	6.4	6.4	6.4

Licensee Comments: none

Drill/Exercise Performance



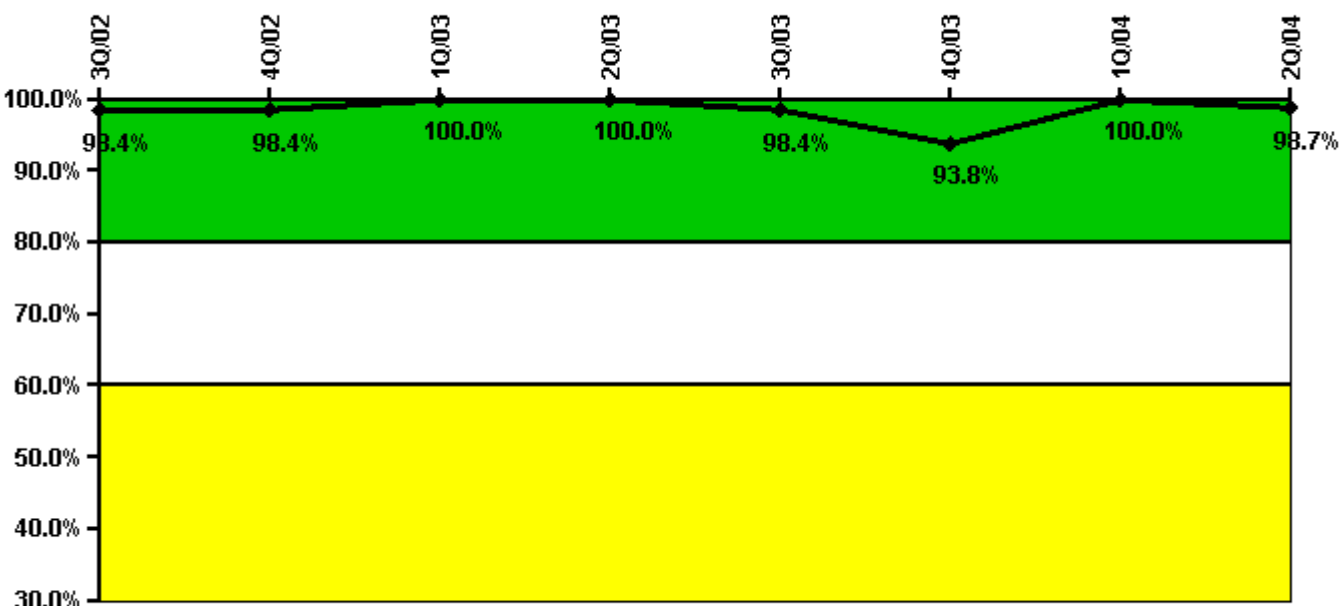
Thresholds: White < 90.0% Yellow < 70.0%

Notes

Drill/Exercise Performance	3Q/02	4Q/02	1Q/03	2Q/03	3Q/03	4Q/03	1Q/04	2Q/04
Successful opportunities	145.0	10.0	64.0	28.0	149.0	0	54.0	52.0
Total opportunities	154.0	10.0	65.0	28.0	156.0	0	57.0	53.0
Indicator value	93.3%	93.8%	94.7%	95.2%	95.9%	95.9%	96.2%	96.0%

Licensee Comments: none

ERO Drill Participation



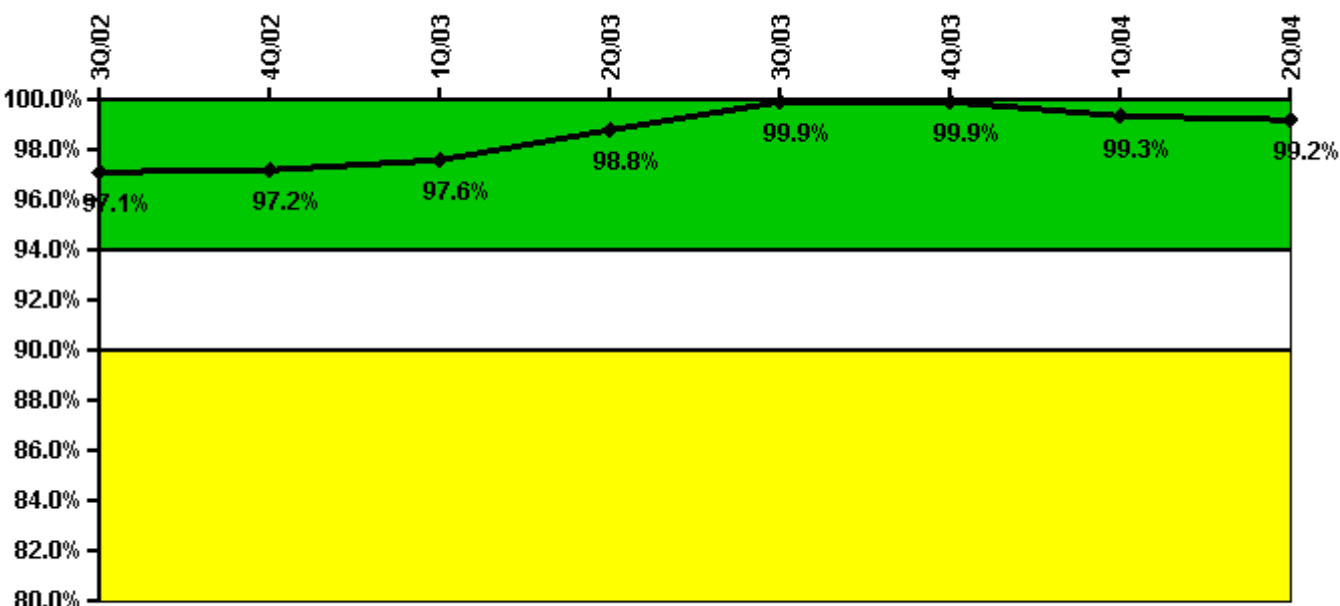
Thresholds: White < 80.0% Yellow < 60.0%

Notes

ERO Drill Participation	3Q/02	4Q/02	1Q/03	2Q/03	3Q/03	4Q/03	1Q/04	2Q/04
Participating Key personnel	61.0	60.0	60.0	60.0	63.0	61.0	78.0	76.0
Total Key personnel	62.0	61.0	60.0	60.0	64.0	65.0	78.0	77.0
Indicator value	98.4%	98.4%	100.0%	100.0%	98.4%	93.8%	100.0%	98.7%

Licensee Comments: none

Alert & Notification System



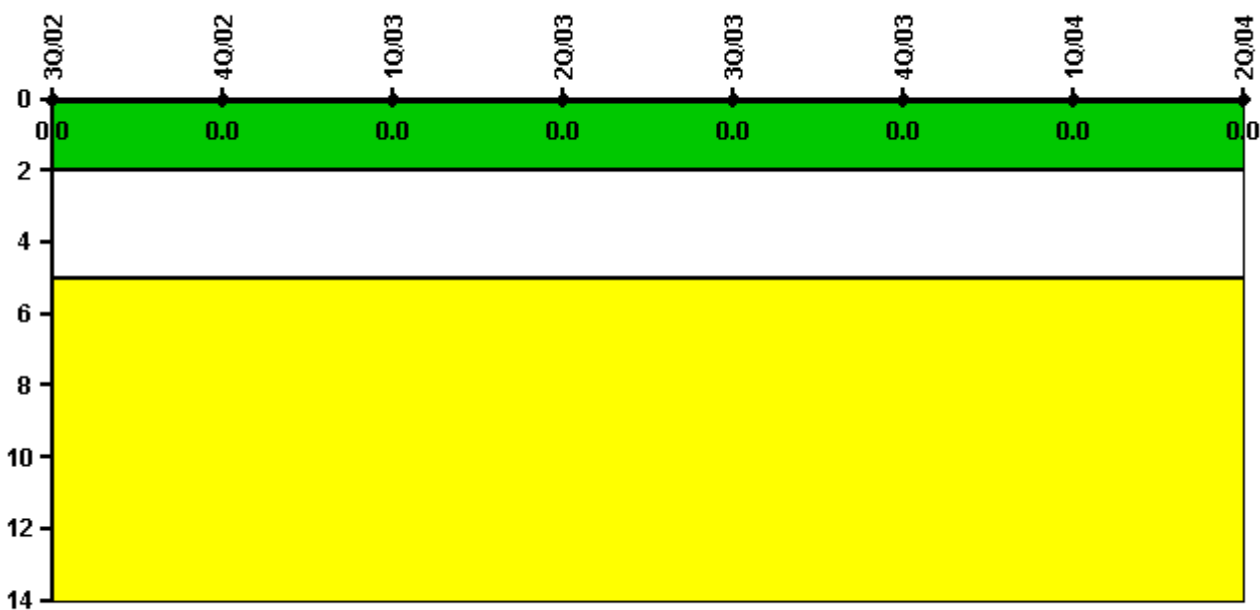
Thresholds: White < 94.0% Yellow < 90.0%

Notes

Alert & Notification System	3Q/02	4Q/02	1Q/03	2Q/03	3Q/03	4Q/03	1Q/04	2Q/04
Successful siren-tests	198	181	185	186	186	186	181	185
Total sirens-tests	206	181	186	186	186	186	186	186
Indicator value	97.1%	97.2%	97.6%	98.8%	99.9%	99.9%	99.3%	99.2%

Licensee Comments: none

Occupational Exposure Control Effectiveness



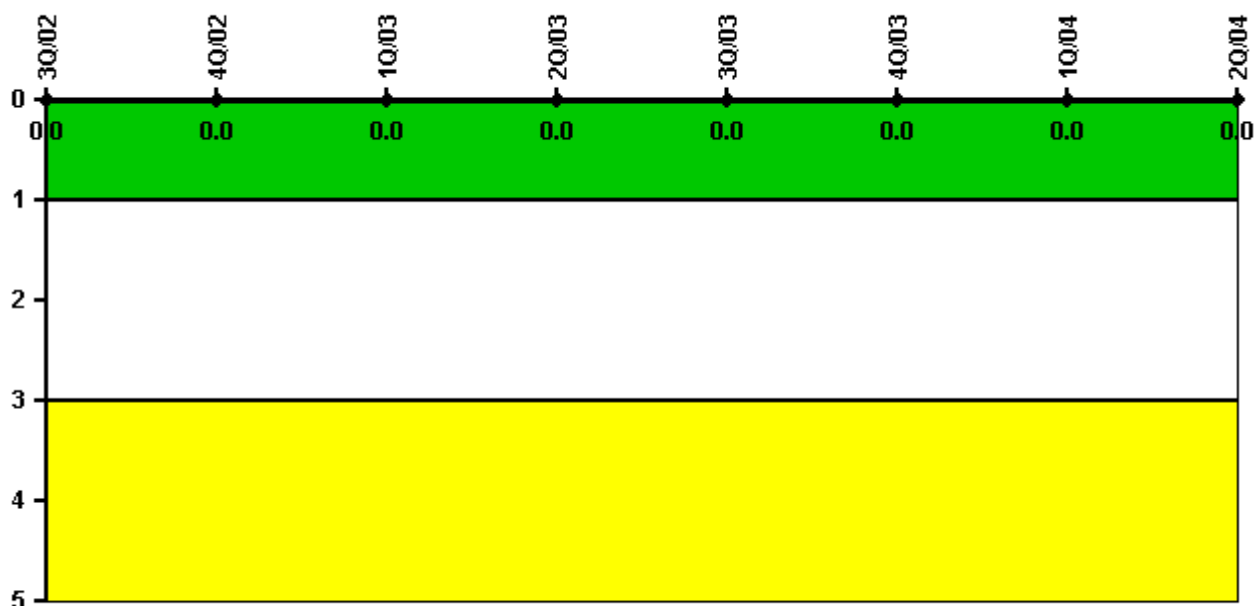
Thresholds: White > 2.0 Yellow > 5.0

Notes

Occupational Exposure Control Effectiveness	3Q/02	4Q/02	1Q/03	2Q/03	3Q/03	4Q/03	1Q/04	2Q/04
High radiation area occurrences	0	0	0	0	0	0	0	0
Very high radiation area occurrences	0	0	0	0	0	0	0	0
Unintended exposure occurrences	0	0	0	0	0	0	0	0
Indicator value	0	0	0	0	0	0	0	0

Licensee Comments: none

RETS/ODCM Radiological Effluent



Thresholds: White > 1.0 Yellow > 3.0

Notes

RETS/ODCM Radiological Effluent	3Q/02	4Q/02	1Q/03	2Q/03	3Q/03	4Q/03	1Q/04	2Q/04
RETS/ODCM occurrences	0	0	0	0	0	0	0	0
Indicator value	0	0	0	0	0	0	0	0

Licensee Comments: none

[Physical Protection](#) information not publicly available.

▲ [Action Matrix Summary](#) | [Inspection Findings Summary](#) | [PI Summary](#) | [Reactor Oversight Process](#)

Last Modified: September 8, 2004