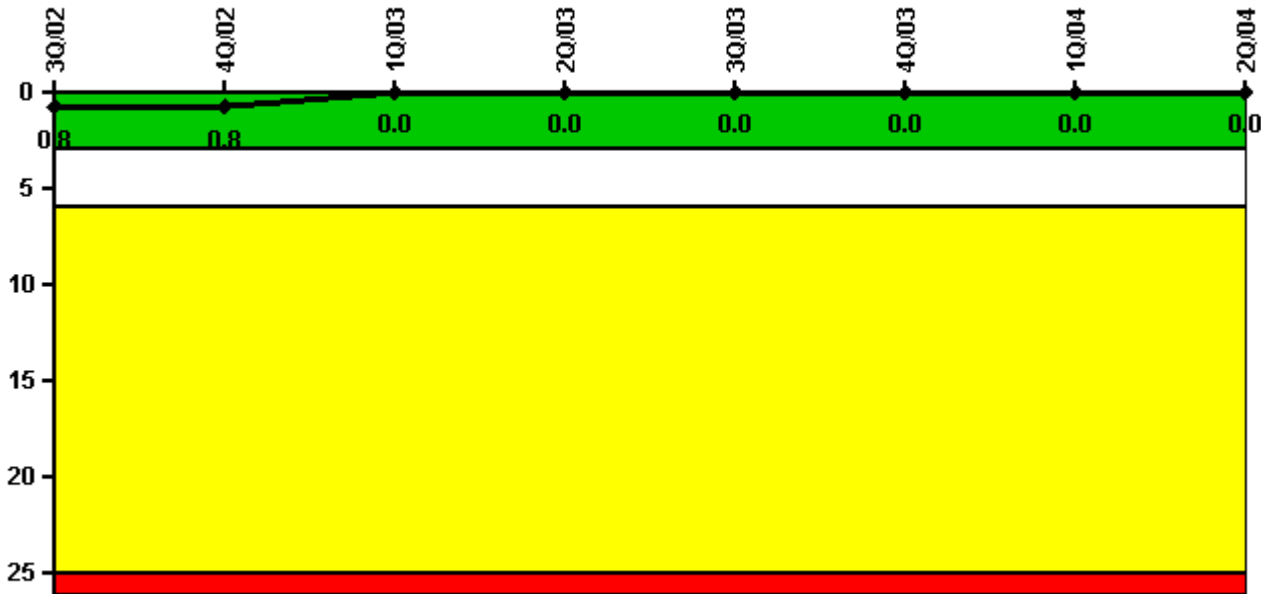


## Diablo Canyon 2

### 2Q/2004 Performance Indicators

Licensee's General Comments: none

#### Unplanned Scrams per 7000 Critical Hrs



Thresholds: White > 3.0 Yellow > 6.0 Red > 25.0

#### Notes

Unplanned Scrams per 7000 Critical Hrs	3Q/02	4Q/02	1Q/03	2Q/03	3Q/03	4Q/03	1Q/04	2Q/04
Unplanned scrams	0	0	0	0	0	0	0	0
Critical hours	2208.0	2157.6	942.4	1932.0	2208.0	2209.0	2184.0	2183.0
Indicator value	0.8	0.8	0	0	0	0	0	0

Licensee Comments: none

### Scrams with Loss of Normal Heat Removal



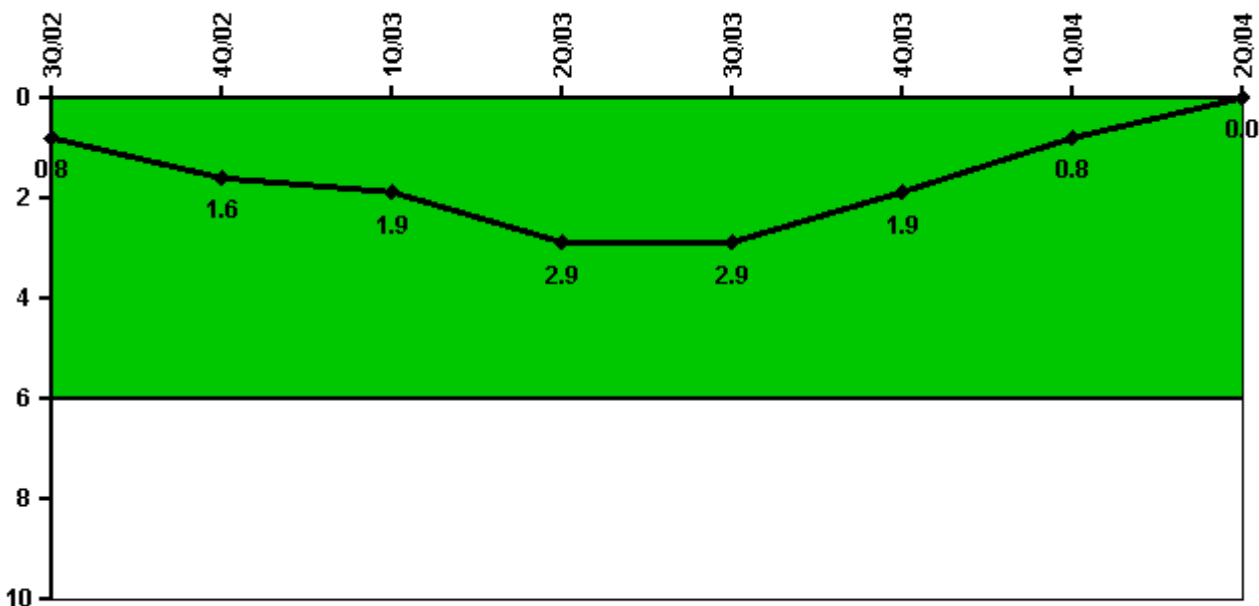
Thresholds: White > 2.0 Yellow > 10.0 Red > 20.0

### Notes

Scrams with Loss of Normal Heat Removal	3Q/02	4Q/02	1Q/03	2Q/03	3Q/03	4Q/03	1Q/04	2Q/04
Scrams	0	0	0	0	0	0	0	0
Indicator value	1.0	0	0	0	0	0	0	0

Licensee Comments: none

### Unplanned Power Changes per 7000 Critical Hrs



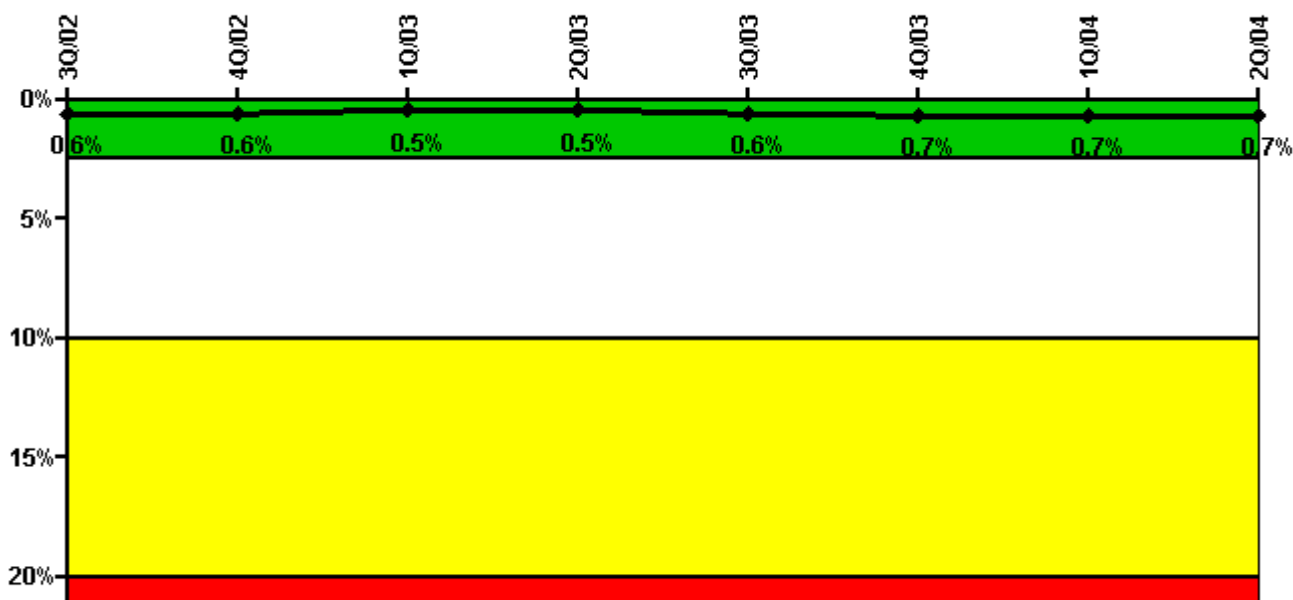
Thresholds: White > 6.0

#### Notes

Unplanned Power Changes per 7000 Critical Hrs	3Q/02	4Q/02	1Q/03	2Q/03	3Q/03	4Q/03	1Q/04	2Q/04
Unplanned power changes	0	1.0	1.0	1.0	0	0	0	0
Critical hours	2208.0	2157.6	942.4	1932.0	2208.0	2209.0	2184.0	2183.0
Indicator value	0.8	1.6	1.9	2.9	2.9	1.9	0.8	0

Licensee Comments: none

### Safety System Unavailability, Emergency AC Power, >2EDG



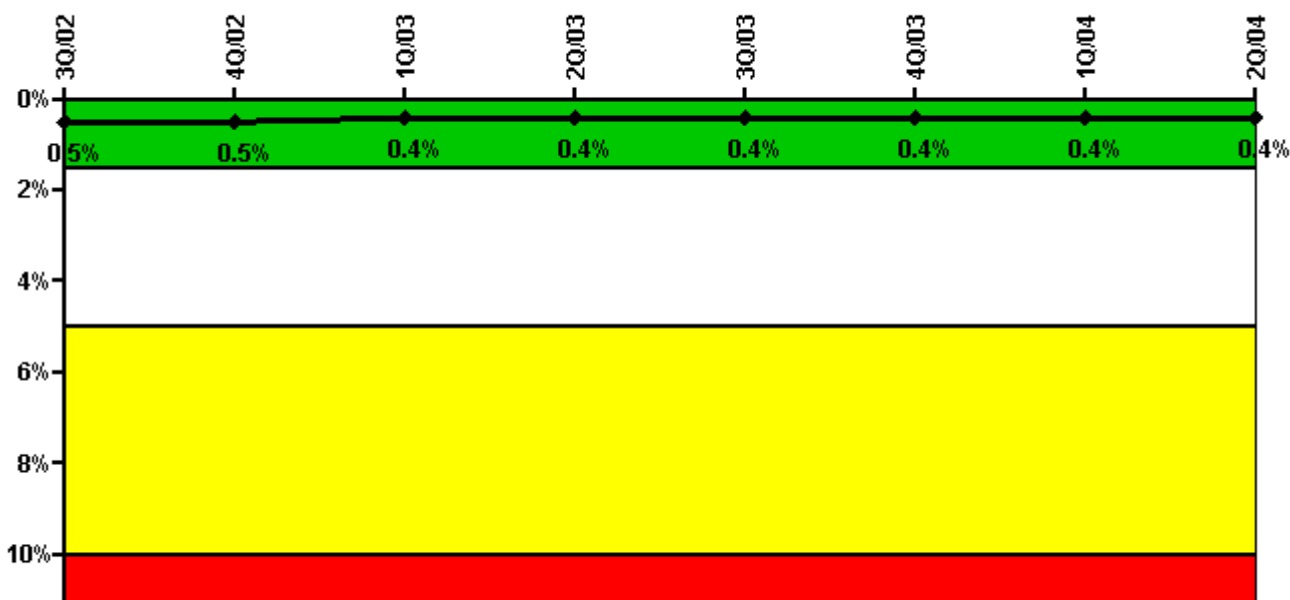
Thresholds: White > 2.5% Yellow > 10.0% Red > 20.0%

#### Notes

Safety System Unavailability, Emergency AC Power, >2EDG	3Q/02	4Q/02	1Q/03	2Q/03	3Q/03	4Q/03	1Q/04	2Q/04
<b>Train 1</b>								
Planned unavailable hours	0	6.90	0	0	41.80	0	0	0
Unplanned unavailable hours	5.50	2.00	0	0.10	7.10	0	60.00	0
Fault exposure hours	0	0	0	0	0	0	0	0
Effective Reset hours	0	0	0	0	0	0	0	0
Required hours	2208.00	2209.00	2160.00	2183.00	2208.00	2209.00	2184.00	2183.00
<b>Train 2</b>								
Planned unavailable hours	0	0	0	0	10.60	36.68	9.00	0
Unplanned unavailable hours	0	0	0	52.30	13.60	4.07	61.43	0
Fault exposure hours	0	0	0	0	0	0	0	0
Effective Reset hours	0	0	0	0	0	0	0	0
Required hours	2208.00	2209.00	2160.00	2183.00	2208.00	2209.00	2184.00	2183.00
<b>Train 3</b>								
Planned unavailable hours	0	0	0	0	1.40	43.58	0	0
Unplanned unavailable hours	0	0	0	0	9.30	2.07	50.05	0
Fault exposure hours	0	0	0	0	0	0	0	0
Effective Reset hours	0	0	0	0	0	0	0	0
Required hours	2208.00	2209.00	2160.00	2183.00	2208.00	2209.00	2184.00	2183.00
<b>Indicator value</b>	<b>0.6%</b>	<b>0.6%</b>	<b>0.5%</b>	<b>0.5%</b>	<b>0.6%</b>	<b>0.7%</b>	<b>0.7%</b>	<b>0.7%</b>

Licensee Comments: none

### Safety System Unavailability, High Pressure Injection System (HPSI)

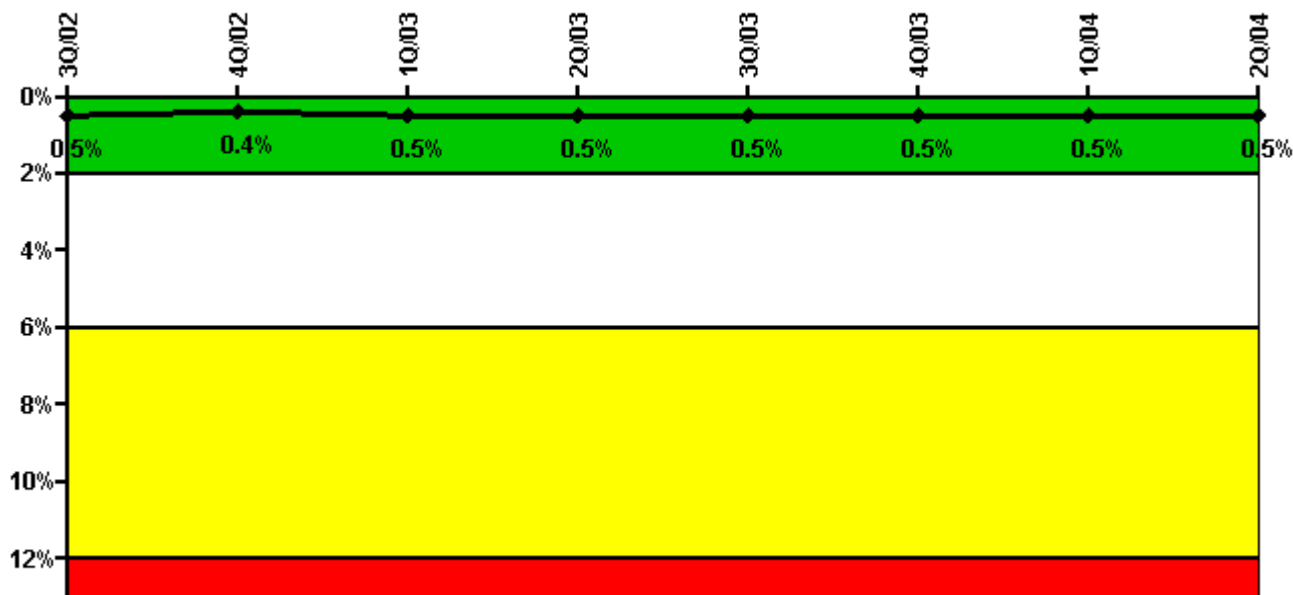


Thresholds: White > 1.5% Yellow > 5.0% Red > 10.0%

#### Notes

Safety System Unavailability, High Pressure Injection System (HPSI)	3Q/02	4Q/02	1Q/03	2Q/03	3Q/03	4Q/03	1Q/04	2Q/04
<b>Train 1</b>								
Planned unavailable hours	21.20	16.60	0	0.70	0	13.30	0	53.93
Unplanned unavailable hours	0	0	0	0	14.60	0	0	0
Fault exposure hours	0	0	0	0	0	0	0	0
Effective Reset hours	0	0	0	0	0	0	0	0
Required hours	2208.00	2157.60	942.40	1932.00	2208.00	2209.00	2184.00	2183.00
<b>Train 2</b>								
Planned unavailable hours	0	0	32.40	0	9.30	0	0	14.48
Unplanned unavailable hours	0	0	0	0	0	0	0	0
Fault exposure hours	0	0	0	0	0	0	0	0
Effective Reset hours	0	0	0	0	0	0	0	0
Required hours	2208.00	2157.60	942.40	1932.00	2208.00	2209.00	2184.00	2183.00
<b>Train 3</b>								
Planned unavailable hours	0.60	21.10	0.80	0.30	23.70	0.38	0.30	11.65
Unplanned unavailable hours	0	0	0	0	0	0	0	0
Fault exposure hours	0	0	0	0	0	0	0	0
Effective Reset hours	0	0	0	0	0	0	0	0
Required hours	2208.00	2157.60	942.40	1932.00	2208.00	2209.00	2184.00	2183.00
<b>Train 4</b>								
Planned unavailable hours	29.50	0.20	4.20	10.70	0.30	0.12	19.05	0.18
Unplanned unavailable hours	41.40	0	0	0	0	0	0	0
Fault exposure hours	0	0	0	0	0	0	0	0
Effective Reset hours	0	0	0	0	0	0	0	0
Required hours	2208.00	2157.60	942.40	1932.00	2208.00	2209.00	2184.00	2183.00
<b>Indicator value</b>	<b>0.5%</b>	<b>0.5%</b>	<b>0.4%</b>	<b>0.4%</b>	<b>0.4%</b>	<b>0.4%</b>	<b>0.4%</b>	<b>0.4%</b>

### Safety System Unavailability, Heat Removal System (AFW)



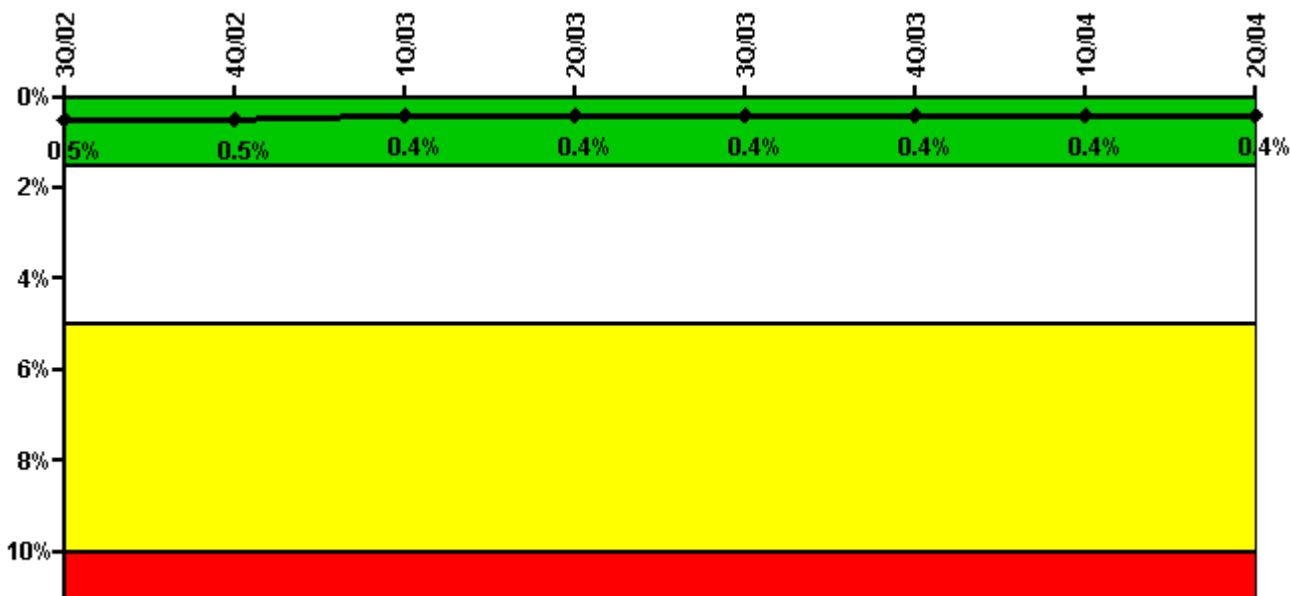
Thresholds: White > 2.0% Yellow > 6.0% Red > 12.0%

#### Notes

Safety System Unavailability, Heat Removal System (AFW)	3Q/02	4Q/02	1Q/03	2Q/03	3Q/03	4Q/03	1Q/04	2Q/04
<b>Train 1</b>								
Planned unavailable hours	12.80	1.70	15.00	1.60	13.50	0	14.25	10.20
Unplanned unavailable hours	0	0	10.80	0	0	0	0	0
Fault exposure hours	0	0	0	0	0	0	0	0
Effective Reset hours	0	0	0	0	0	0	0	0
Required hours	2208.00	2157.60	942.40	1932.00	2208.00	2209.00	2184.00	2183.00
<b>Train 2</b>								
Planned unavailable hours	12.10	2.10	1.40	4.60	1.70	21.10	0	1.00
Unplanned unavailable hours	0	0	0	0	0	0	0	1.75
Fault exposure hours	0	0	0	0	0	0	0	0
Effective Reset hours	0	0	0	0	0	0	0	0
Required hours	2208.00	2157.60	942.40	1932.00	2208.00	2209.00	2184.00	2183.00
<b>Train 3</b>								
Planned unavailable hours	0	23.70	0.40	22.30	15.50	1.05	14.61	1.88
Unplanned unavailable hours	0	0	0	0	0	0	0	37.32
Fault exposure hours	0	0	0	0	0	0	0	0
Effective Reset hours	0	0	0	0	0	0	0	0
Required hours	2208.00	2157.60	942.40	1932.00	2208.00	2209.00	2184.00	2183.00
<b>Indicator value</b>	<b>0.5%</b>	<b>0.4%</b>	<b>0.5%</b>	<b>0.5%</b>	<b>0.5%</b>	<b>0.5%</b>	<b>0.5%</b>	<b>0.5%</b>

Licensee Comments: none

### Safety System Unavailability, Residual Heat Removal System



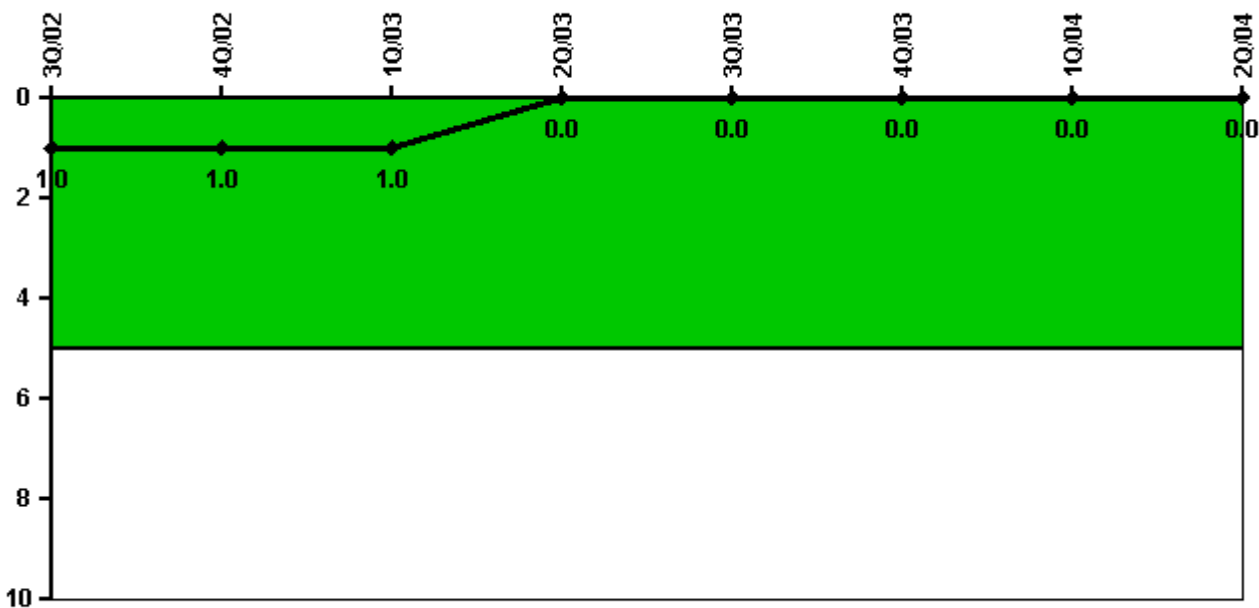
Thresholds: White > 1.5% Yellow > 5.0% Red > 10.0%

#### Notes

Safety System Unavailability, Residual Heat Removal System	3Q/02	4Q/02	1Q/03	2Q/03	3Q/03	4Q/03	1Q/04	2Q/04
<b>Train 1</b>								
Planned unavailable hours	21.40	0.70	1.10	8.90	1.00	0.66	14.07	0.72
Unplanned unavailable hours	24.60	0	0	0	0	0	0	0
Fault exposure hours	0	0	0	0	0	0	0	0
Effective Reset hours	0	0	0	0	0	0	0	0
Required hours	2208.00	2209.00	2160.00	2183.00	2208.00	2209.00	2184.00	2183.00
<b>Train 2</b>								
Planned unavailable hours	0.80	0.40	0	0.30	14.40	0.35	0.83	19.70
Unplanned unavailable hours	41.40	0	0	0	0	0	0	0
Fault exposure hours	0	0	0	0	0	0	0	0
Effective Reset hours	0	0	0	0	0	0	0	0
Required hours	2208.00	2209.00	2160.00	2183.00	2208.00	2209.00	2184.00	2183.00
<b>Indicator value</b>	<b>0.5%</b>	<b>0.5%</b>	<b>0.4%</b>	<b>0.4%</b>	<b>0.4%</b>	<b>0.4%</b>	<b>0.4%</b>	<b>0.4%</b>

Licensee Comments: none

### Safety System Functional Failures (PWR)



Thresholds: White > 5.0

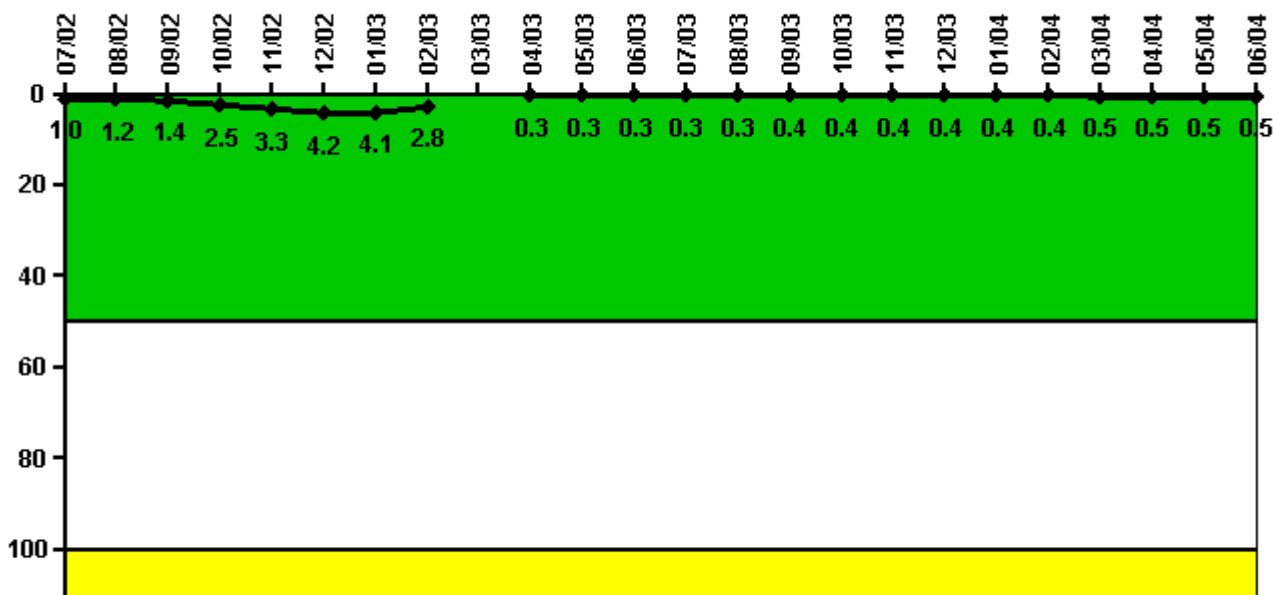
#### Notes

Safety System Functional Failures (PWR)	3Q/02	4Q/02	1Q/03	2Q/03	3Q/03	4Q/03	1Q/04	2Q/04
Safety System Functional Failures	0	0	0	0	0	0	0	0
Indicator value	1	1	1	0	0	0	0	0

Licensee Comments: none



### Reactor Coolant System Activity



Thresholds: White > 50.0 Yellow > 100.0

#### Notes

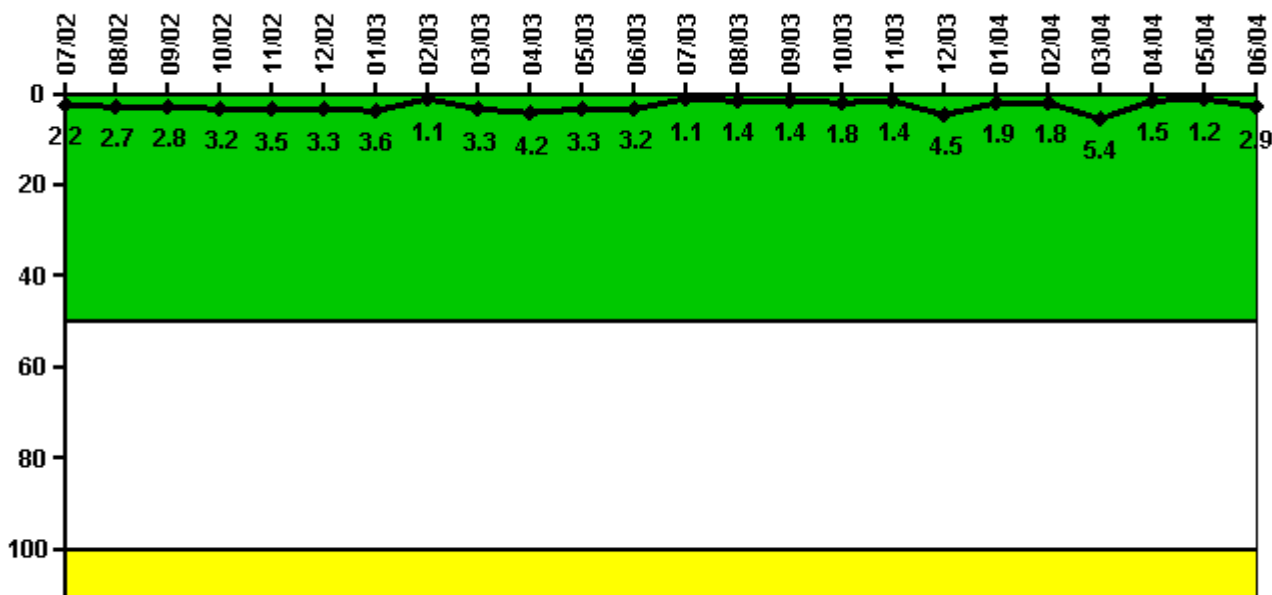
Reactor Coolant System Activity	7/02	8/02	9/02	10/02	11/02	12/02	1/03	2/03	3/03	4/03	5/03	6/03
Maximum activity	0.006990	0.008660	0.010200	0.017800	0.023300	0.029500	0.029000	0.019800	N/A	0.002310	0.002770	0.002790
Technical specification limit	0.7	0.7	0.7	0.7	0.7	0.7	0.7	0.7	N/A	0.7	1.0	1.0
Indicator value	1.0	1.2	1.4	2.5	3.3	4.2	4.1	2.8	N/A	0.3	0.3	0.3

Reactor Coolant System Activity	7/03	8/03	9/03	10/03	11/03	12/03	1/04	2/04	3/04	4/04	5/04	6/04
Maximum activity	0.003030	0.003200	0.003670	0.003500	0.003710	0.003800	0.004300	0.004240	0.004710	0.005100	0.004720	0.005150
Technical specification limit	1.0	1.0	1.0	1.0	1.0	1.0	1.0	1.0	1.0	1.0	1.0	1.0
Indicator value	0.3	0.3	0.4	0.4	0.4	0.4	0.4	0.4	0.5	0.5	0.5	0.5

Licensee Comments: none

### Reactor Coolant System Leakage



Thresholds: White > 50.0 Yellow > 100.0

#### Notes

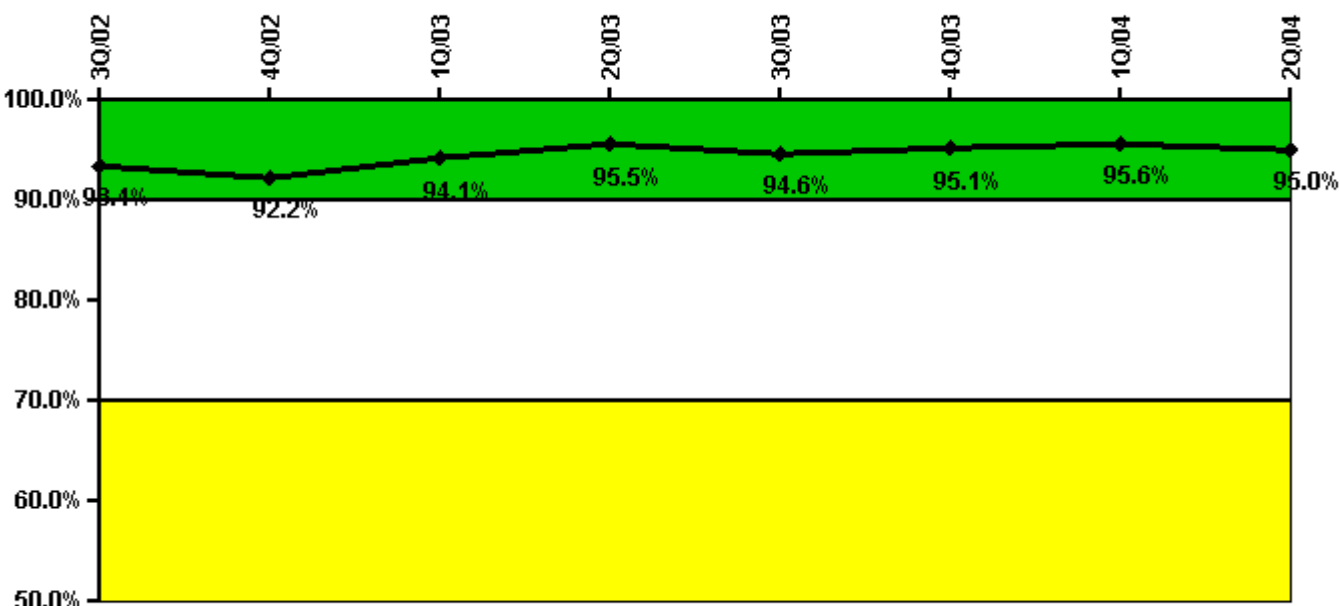
Reactor Coolant System Leakage	7/02	8/02	9/02	10/02	11/02	12/02	1/03	2/03	3/03	4/03	5/03	6/03
Maximum leakage	0.219	0.274	0.276	0.321	0.348	0.333	0.363	0.114	0.325	0.418	0.328	0.319
Technical specification limit	10.0	10.0	10.0	10.0	10.0	10.0	10.0	10.0	10.0	10.0	10.0	10.0
Indicator value	2.2	2.7	2.8	3.2	3.5	3.3	3.6	1.1	3.3	4.2	3.3	3.2

Reactor Coolant System Leakage	7/03	8/03	9/03	10/03	11/03	12/03	1/04	2/04	3/04	4/04	5/04	6/04
Maximum leakage	0.112	0.135	0.142	0.179	0.143	0.454	0.185	0.175	0.541	0.152	0.123	0.290
Technical specification limit	10.0	10.0	10.0	10.0	10.0	10.0	10.0	10.0	10.0	10.0	10.0	10.0
Indicator value	1.1	1.4	1.4	1.8	1.4	4.5	1.9	1.8	5.4	1.5	1.2	2.9

Licensee Comments: none

### Drill/Exercise Performance



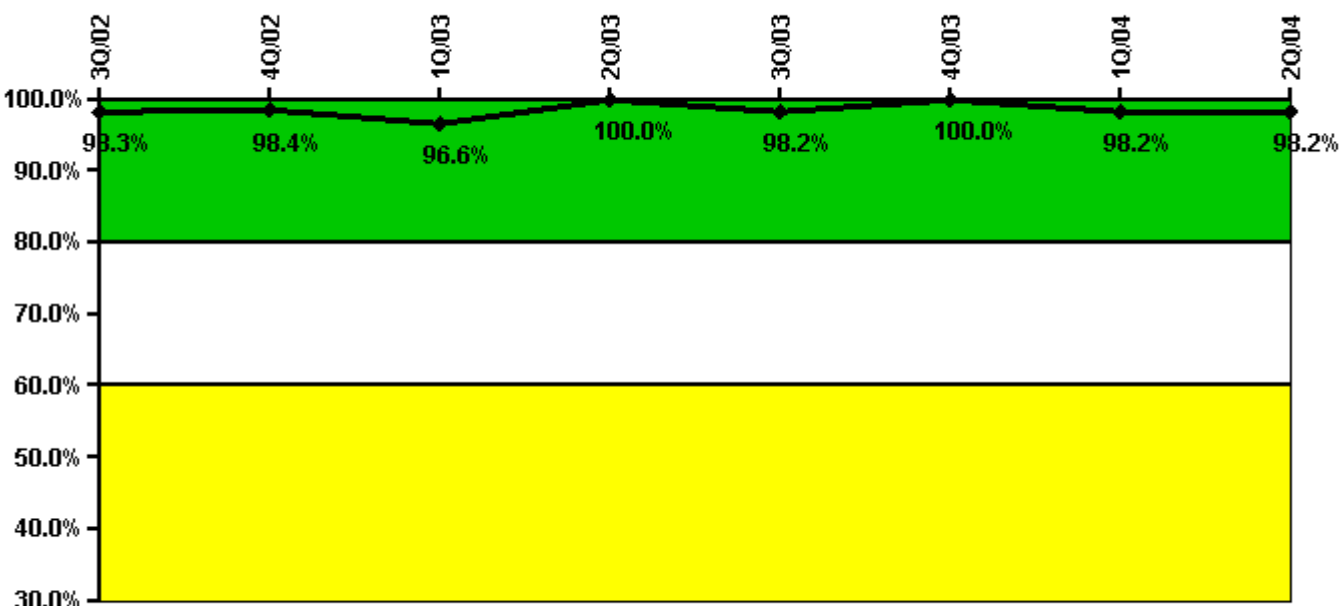
Thresholds: White < 90.0% Yellow < 70.0%

#### Notes

Drill/Exercise Performance	3Q/02	4Q/02	1Q/03	2Q/03	3Q/03	4Q/03	1Q/04	2Q/04
Successful opportunities	9.0	19.0	33.0	57.0	21.0	15.0	39.0	14.0
Total opportunities	11.0	22.0	33.0	58.0	23.0	15.0	41.0	15.0
Indicator value	93.4%	92.2%	94.1%	95.5%	94.6%	95.1%	95.6%	95.0%

Licensee Comments: none

### ERO Drill Participation



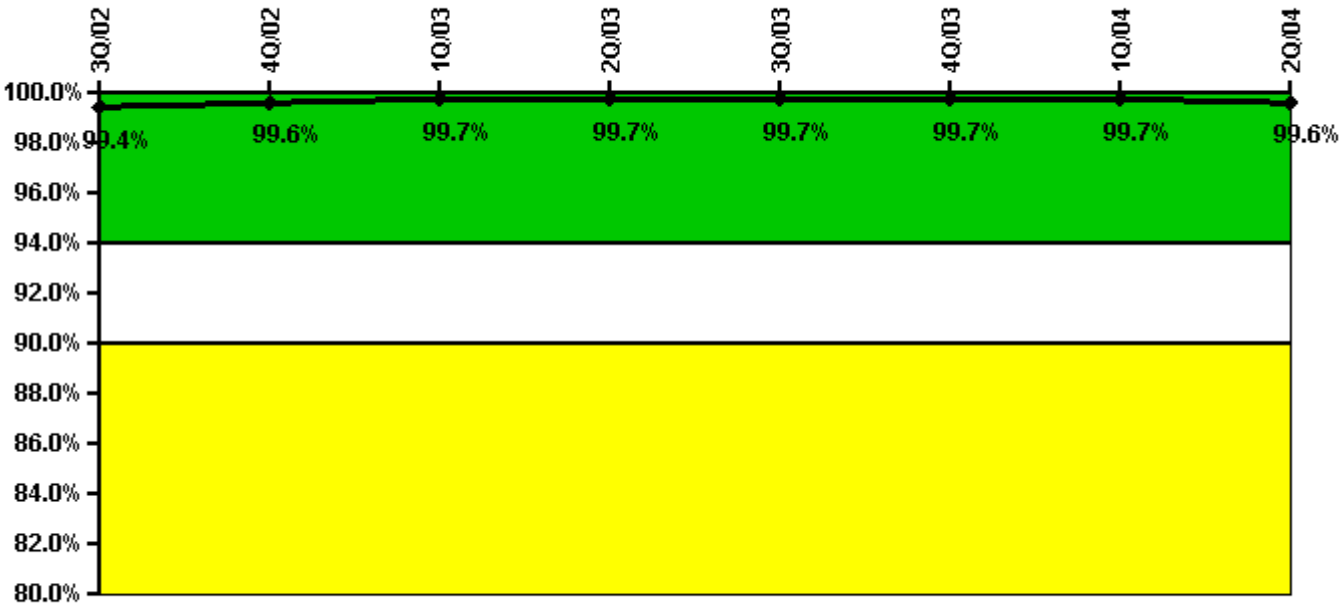
Thresholds: White < 80.0% Yellow < 60.0%

#### Notes

ERO Drill Participation	3Q/02	4Q/02	1Q/03	2Q/03	3Q/03	4Q/03	1Q/04	2Q/04
Participating Key personnel	59.0	60.0	57.0	55.0	54.0	54.0	54.0	54.0
Total Key personnel	60.0	61.0	59.0	55.0	55.0	54.0	55.0	55.0
Indicator value	98.3%	98.4%	96.6%	100.0%	98.2%	100.0%	98.2%	98.2%

Licensee Comments: none

### Alert & Notification System



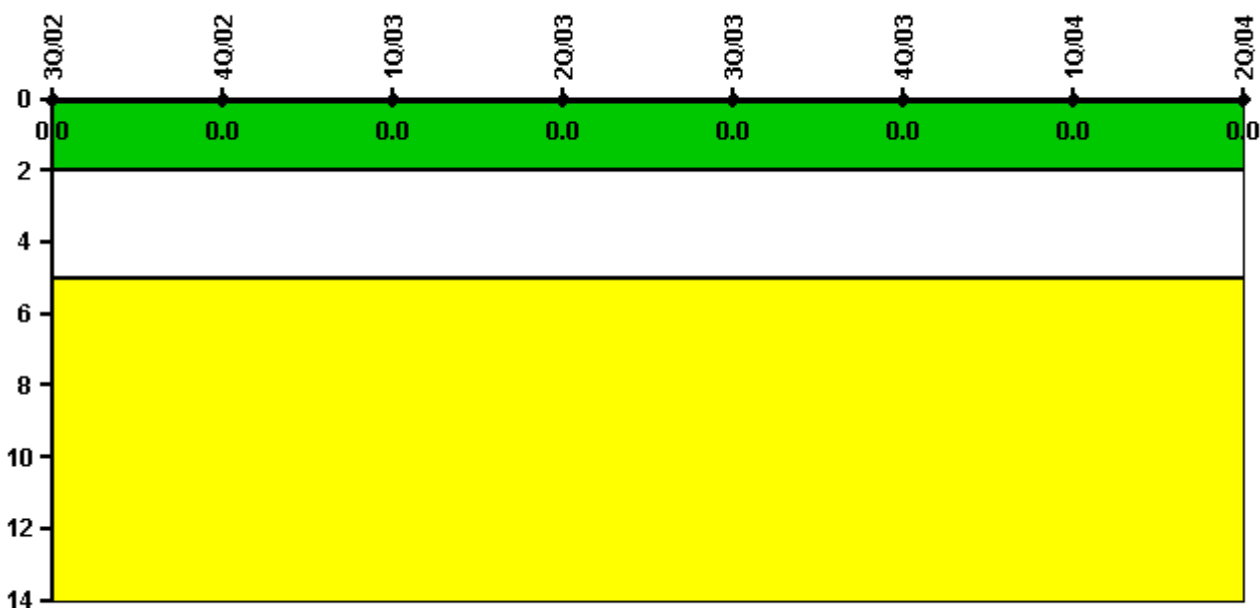
Thresholds: White < 94.0% Yellow < 90.0%

#### Notes

Alert & Notification System	3Q/02	4Q/02	1Q/03	2Q/03	3Q/03	4Q/03	1Q/04	2Q/04
Successful siren-tests	1045	1047	913	915	1174	1046	1044	1043
Total sirens-tests	1048	1048	917	917	1179	1048	1048	1048
Indicator value	99.4%	99.6%	99.7%	99.7%	99.7%	99.7%	99.7%	99.6%

Licensee Comments: none

### Occupational Exposure Control Effectiveness



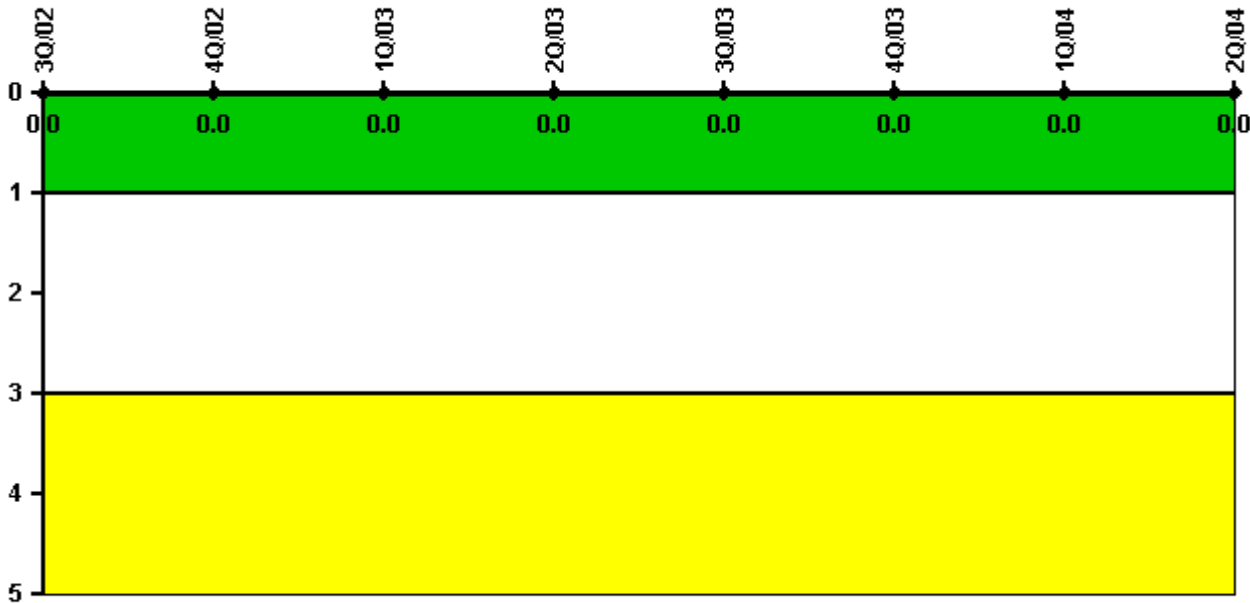
Thresholds: White > 2.0 Yellow > 5.0

#### Notes

Occupational Exposure Control Effectiveness	3Q/02	4Q/02	1Q/03	2Q/03	3Q/03	4Q/03	1Q/04	2Q/04
High radiation area occurrences	0	0	0	0	0	0	0	0
Very high radiation area occurrences	0	0	0	0	0	0	0	0
Unintended exposure occurrences	0	0	0	0	0	0	0	0
<b>Indicator value</b>	<b>0</b>	<b>0</b>	<b>0</b>	<b>0</b>	<b>0</b>	<b>0</b>	<b>0</b>	<b>0</b>

Licensee Comments: none

### RETS/ODCM Radiological Effluent



Thresholds: White > 1.0 Yellow > 3.0

#### Notes

RETS/ODCM Radiological Effluent	3Q/02	4Q/02	1Q/03	2Q/03	3Q/03	4Q/03	1Q/04	2Q/04
RETS/ODCM occurrences	0	0	0	0	0	0	0	0
Indicator value	0	0	0	0	0	0	0	0

Licensee Comments: none

[Physical Protection](#) information not publicly available.

▲ [Action Matrix Summary](#) | [Inspection Findings Summary](#) | [PI Summary](#) | [Reactor Oversight Process](#)

Last Modified: September 8, 2004