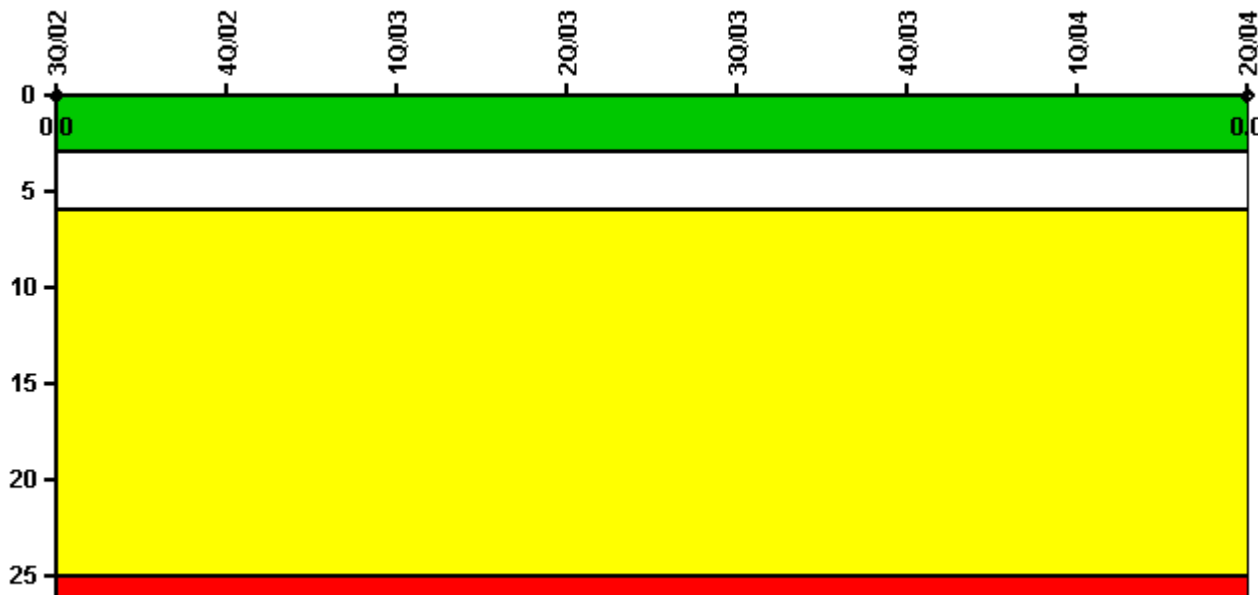


Davis-Besse

2Q/2004 Performance Indicators

Licensee's General Comments: none

Unplanned Scrams per 7000 Critical Hrs



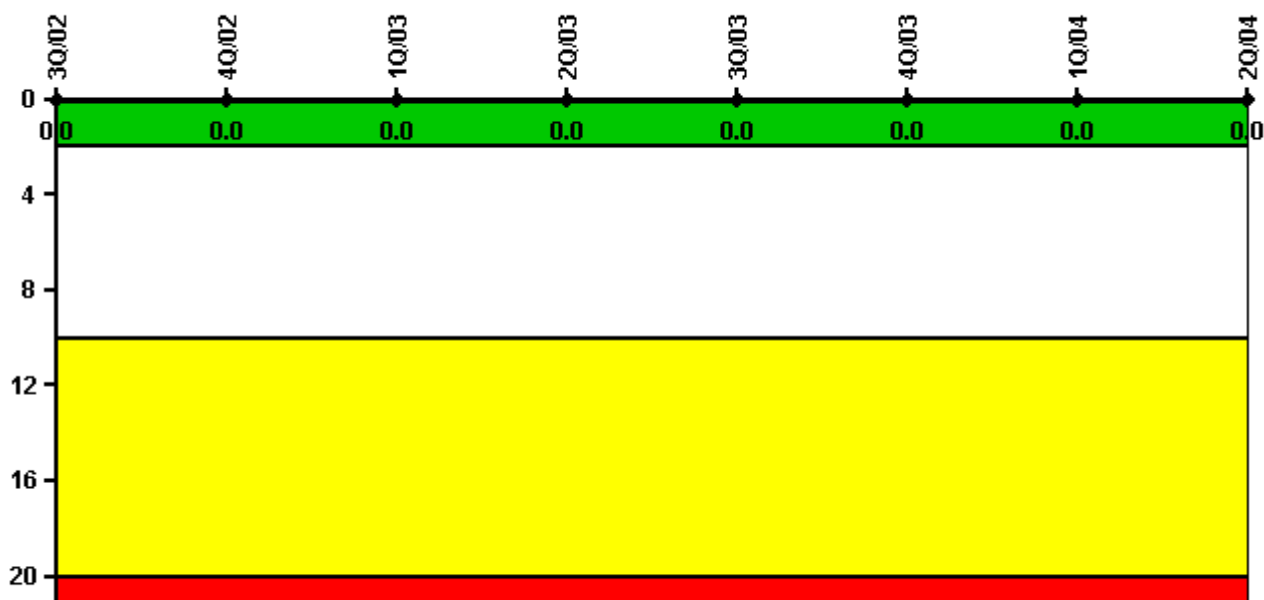
Thresholds: White > 3.0 Yellow > 6.0 Red > 25.0

Notes

Unplanned Scrams per 7000 Critical Hrs	3Q/02	4Q/02	1Q/03	2Q/03	3Q/03	4Q/03	1Q/04	2Q/04
Unplanned scrams	0	0	0	0	0	0	0	0
Critical hours	0	0	0	0	0	0	287.3	2183.0
Indicator value	0	N/A	N/A	N/A	N/A	N/A	N/A	0

Licensee Comments: none

Scrams with Loss of Normal Heat Removal



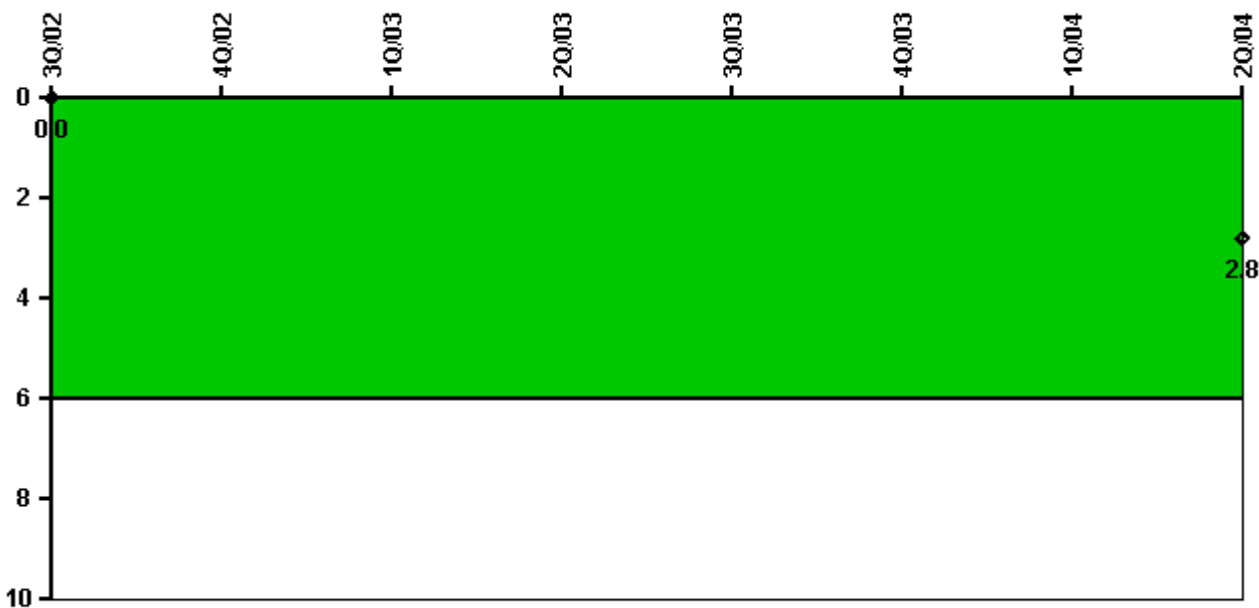
Thresholds: White > 2.0 Yellow > 10.0 Red > 20.0

Notes

Scrams with Loss of Normal Heat Removal	3Q/02	4Q/02	1Q/03	2Q/03	3Q/03	4Q/03	1Q/04	2Q/04
Scrams	0	0	0	0	0	0	0	0
Indicator value	0	0	0	0	0	0	0	0

Licensee Comments: none

Unplanned Power Changes per 7000 Critical Hrs



Thresholds: White > 6.0

Notes

Unplanned Power Changes per 7000 Critical Hrs	3Q/02	4Q/02	1Q/03	2Q/03	3Q/03	4Q/03	1Q/04	2Q/04
Unplanned power changes	0	0	0	0	0	0	1.0	0
Critical hours	0	0	0	0	0	0	287.3	2183.0
Indicator value	0	N/A	N/A	N/A	N/A	N/A	N/A	2.8

Licensee Comments: none

Safety System Unavailability, Emergency AC Power



Thresholds: White > 2.5% Yellow > 5.0% Red > 10.0%

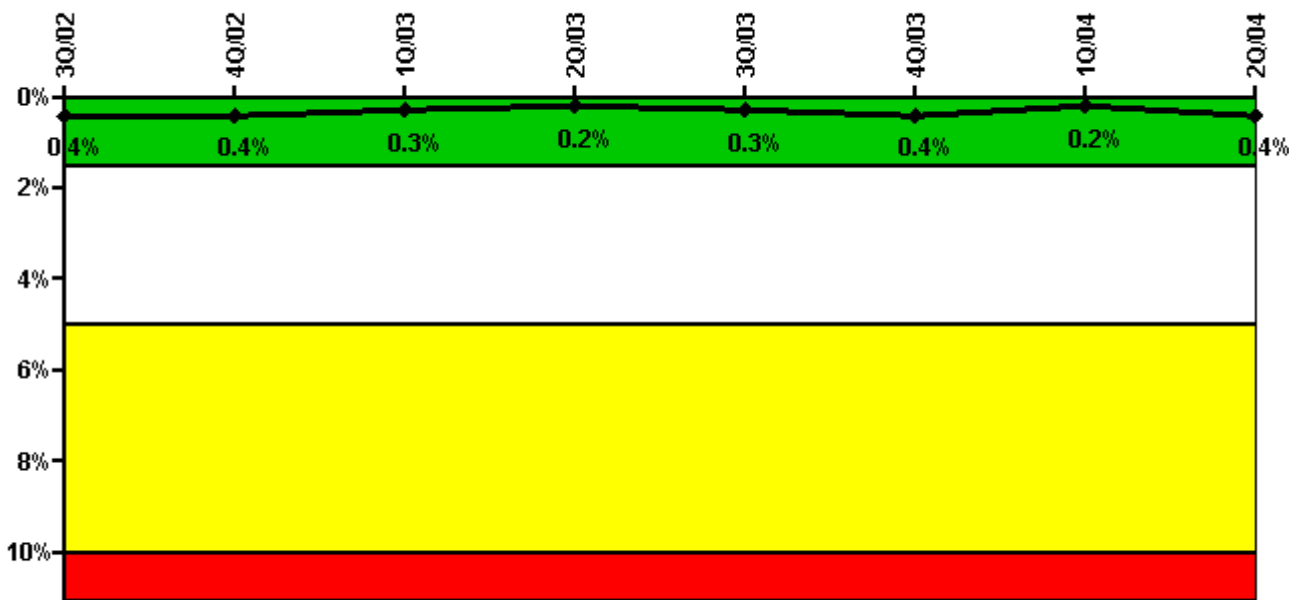
Notes

Safety System Unavailability, Emergency AC Power	3Q/02	4Q/02	1Q/03	2Q/03	3Q/03	4Q/03	1Q/04	2Q/04
Train 1								
Planned unavailable hours	0	0	0	0	0	0.80	29.20	5.40
Unplanned unavailable hours	0	0	0	0	0	0	0	15.70
Fault exposure hours	0	0	0	0	0	0	0	0
Effective Reset hours	0	0	0	0	0	0	0	0
Required hours	1239.30	609.70	1192.50	937.80	1616.20	953.30	2184.00	2183.00
Train 2								
Planned unavailable hours	0	0	0	0	1.80	0	7.30	35.30
Unplanned unavailable hours	0	0	0	0	0	0	0	0
Fault exposure hours	0	0	0	0	0	0	0	0
Effective Reset hours	0	0	0	0	0	0	0	0
Required hours	968.70	1598.30	967.50	1246.20	1011.30	1401.80	2184.00	2183.00
Indicator value	0.9%	0.8%	0.8%	0.8%	0.8%	0.7%	0.8%	0.8%

Licensee Comments:

2Q/04: EDG train 1, 293.5 hours of T/2 Fault Exposure hours.

Safety System Unavailability, High Pressure Injection System (HPSI)



Thresholds: White > 1.5% Yellow > 5.0% Red > 10.0%

Notes

Safety System Unavailability, High Pressure Injection System (HPSI)	3Q/02	4Q/02	1Q/03	2Q/03	3Q/03	4Q/03	1Q/04	2Q/04
Train 1								
Planned unavailable hours	0	0	0	0	9.10	0	0	10.80
Unplanned unavailable hours	0	0	0	0	0	0	0	0
Fault exposure hours	0	0	0	0	0	0	0	0
Effective Reset hours	0	0	0	0	0	0	0	0
Required hours	0	0	0	0	377.70	213.30	2063.50	2183.00
Train 2								
Planned unavailable hours	0	0	0	0	3.50	0	0.60	16.40
Unplanned unavailable hours	0	0	0	0	0	0	0	6.80
Fault exposure hours	0	0	0	0	0	0	0	0
Effective Reset hours	0	0	0	0	0	0	0	0
Required hours	0	0	0	0	377.70	147.20	2063.50	2183.00
Indicator value	0.4%	0.4%	0.3%	0.2%	0.3%	0.4%	0.2%	0.4%

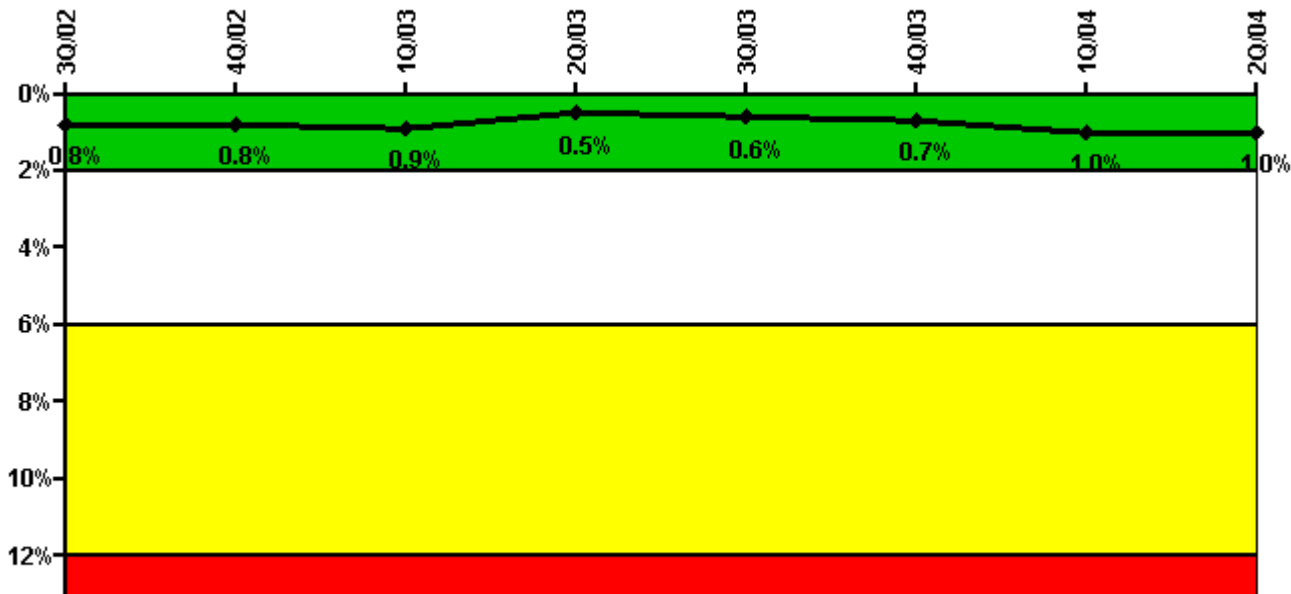
Licensee Comments:

3Q/03: Because of design deficiencies associated with the High Pressure Injection Pumps involving degradation due to debris in emergency sump fluid post-accident (LER 2003-002) and inadequate pump minimum recirculation flow following SBLOCA (LER 2003-003), the following fault exposure hours would apply to the High Pressure Injection System: 3Q2000 - Train 1: 2208 hours; Train 2: 2202.6 hours. 4Q2000 - Train 1: 2209 hours; Train 2: 2209 hours. 1Q2001 - Train 1: 2146 hours; Train 2: 2145.7 hours. 2Q2001 - Train 1: 2183 hours; Train 2: 2183 hours. 3Q2001 - Train 1: 2207.5 hours; Train 2: 2198.7 hours. 4Q2001 - Train 1: 2203.2 hours; Train 2: 2209 hours. 1Q2002 - Train 1: 1113.3 hours; Train 2: 1134.4 hours. No Fault Exposure Hours for 2Q2002 and beyond due to plant shutdown. This was also noted for 2Q2003.

2Q/02: Updated values based on revised hours calculation.

1Q/02: Updated values based on revised hours calculation.

Safety System Unavailability, Heat Removal System (AFW)



Thresholds: White > 2.0% Yellow > 6.0% Red > 12.0%

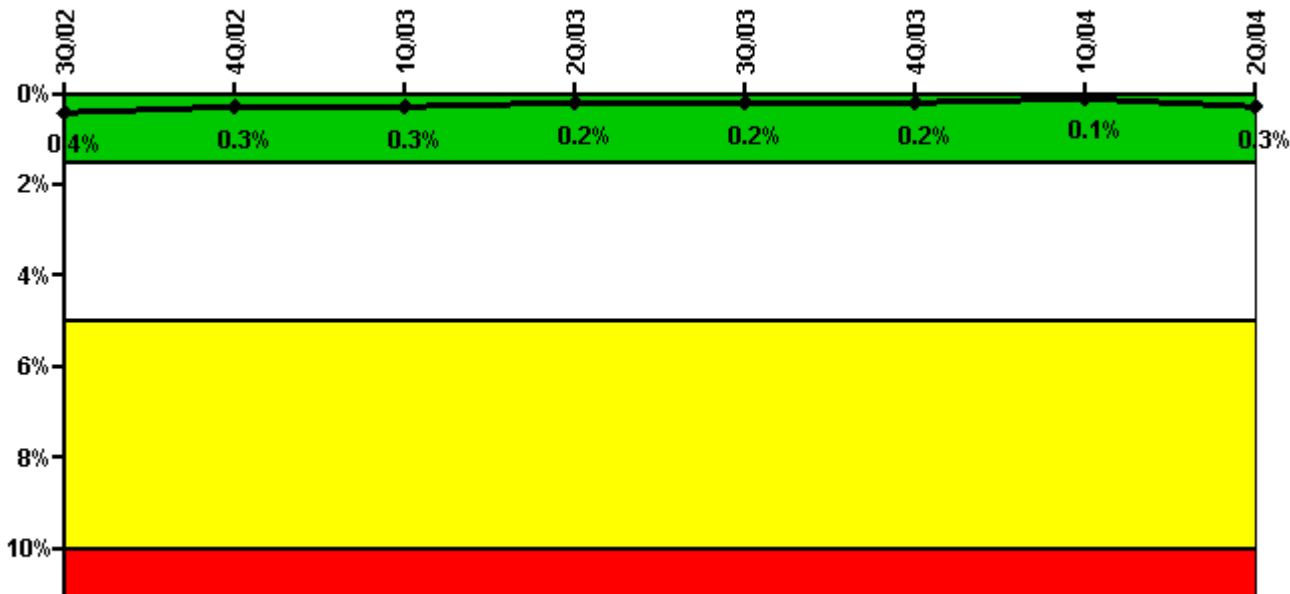
Notes

Safety System Unavailability, Heat Removal System (AFW)	3Q/02	4Q/02	1Q/03	2Q/03	3Q/03	4Q/03	1Q/04	2Q/04
Train 1								
Planned unavailable hours	0	0	0	0	6.65	2.53	12.30	23.40
Unplanned unavailable hours	0	0	0	0	18.12	0	22.90	0
Fault exposure hours	0	0	0	0	0	0	0	0
Effective Reset hours	0	0	0	0	0	0	0	0
Required hours	0	0	0	0	377.68	92.07	1656.30	2183.00
Train 2								
Planned unavailable hours	0	0	0	0	0.72	0	9.80	23.90
Unplanned unavailable hours	0	0	0	0	0	0	31.90	0
Fault exposure hours	0	0	0	0	0	0	0	0
Effective Reset hours	0	0	0	0	0	0	0	0
Required hours	0	0	0	0	377.68	92.07	1656.30	2183.00
Train 3								
Planned unavailable hours	0	0	0	0	0	0	0	13.70
Unplanned unavailable hours	0	0	0	0	0	0	0	0
Fault exposure hours	0	0	0	0	0	0	0	0
Effective Reset hours	0	0	0	0	0	0	0	0
Required hours	0	0	0	0	377.68	92.07	1656.30	2183.00
Indicator value	0.8%	0.8%	0.9%	0.5%	0.6%	0.7%	1.0%	1.0%

Licensee Comments:

1Q/04: Updated values based on revised hours calculation.

Safety System Unavailability, Residual Heat Removal System



Thresholds: White > 1.5% Yellow > 5.0% Red > 10.0%

Notes

Safety System Unavailability, Residual Heat Removal System	3Q/02	4Q/02	1Q/03	2Q/03	3Q/03	4Q/03	1Q/04	2Q/04
Train 1								
Planned unavailable hours	0	0	0	0	3.80	0	2.60	26.90
Unplanned unavailable hours	0	0	0	0	0	0	0	0
Fault exposure hours	0	0	0	0	0	0	0	0
Effective Reset hours	0	0	0	0	0	0	0	0
Required hours	1250.60	609.70	1801.70	1384.70	1662.60	943.40	2184.00	2183.00
Train 2								
Planned unavailable hours	0	0	0	0	1.50	0	2.80	15.50
Unplanned unavailable hours	0	0	0	0	0	0	0	0
Fault exposure hours	0	0	0	0	0	0	0	0
Effective Reset hours	0	0	0	0	0	0	0	0
Required hours	957.40	1598.30	1057.50	1573.80	1136.30	1477.90	2184.00	2183.00
Indicator value	0.4%	0.3%	0.3%	0.2%	0.2%	0.2%	0.1%	0.3%

Licensee Comments:

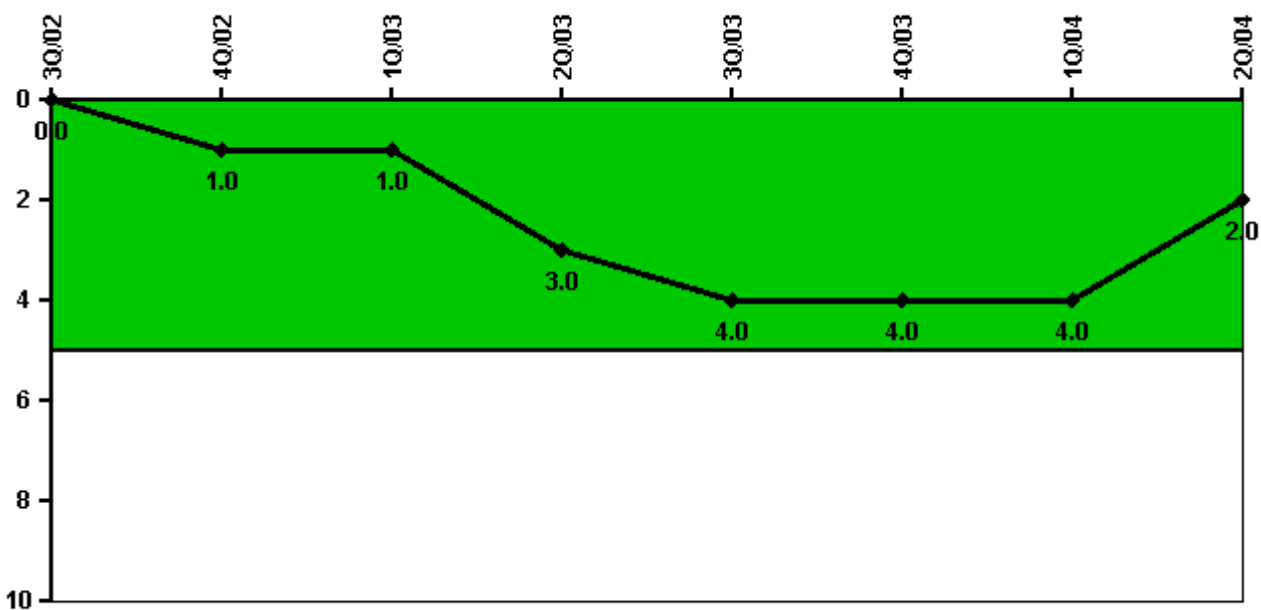
3Q/03: Updated values based on revised hours calculation.

2Q/03: Updated values based on revised hours calculation.

1Q/03: Updated values based on revised hours calculation.

1Q/02: Updated values based on revised hours calculation.

Safety System Functional Failures (PWR)



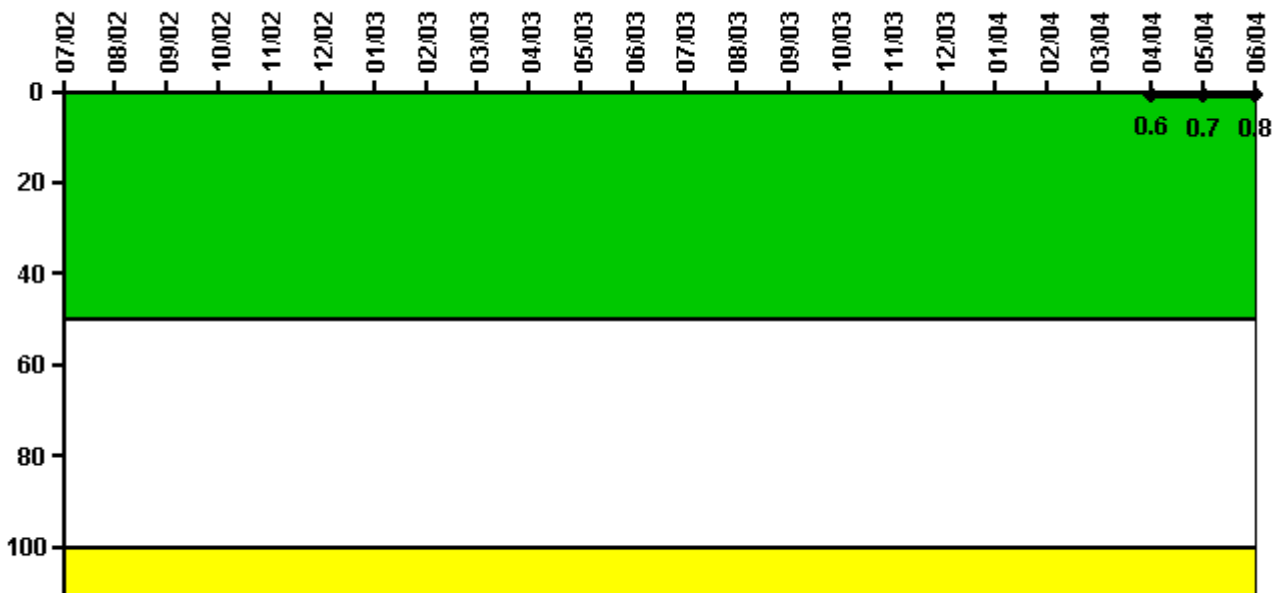
Thresholds: White > 5.0

Notes

Safety System Functional Failures (PWR)	3Q/02	4Q/02	1Q/03	2Q/03	3Q/03	4Q/03	1Q/04	2Q/04
Safety System Functional Failures	0	1	0	2	1	1	0	0
Indicator value	0	1	1	3	4	4	4	2

Licensee Comments: none

Reactor Coolant System Activity



Thresholds: White > 50.0 Yellow > 100.0

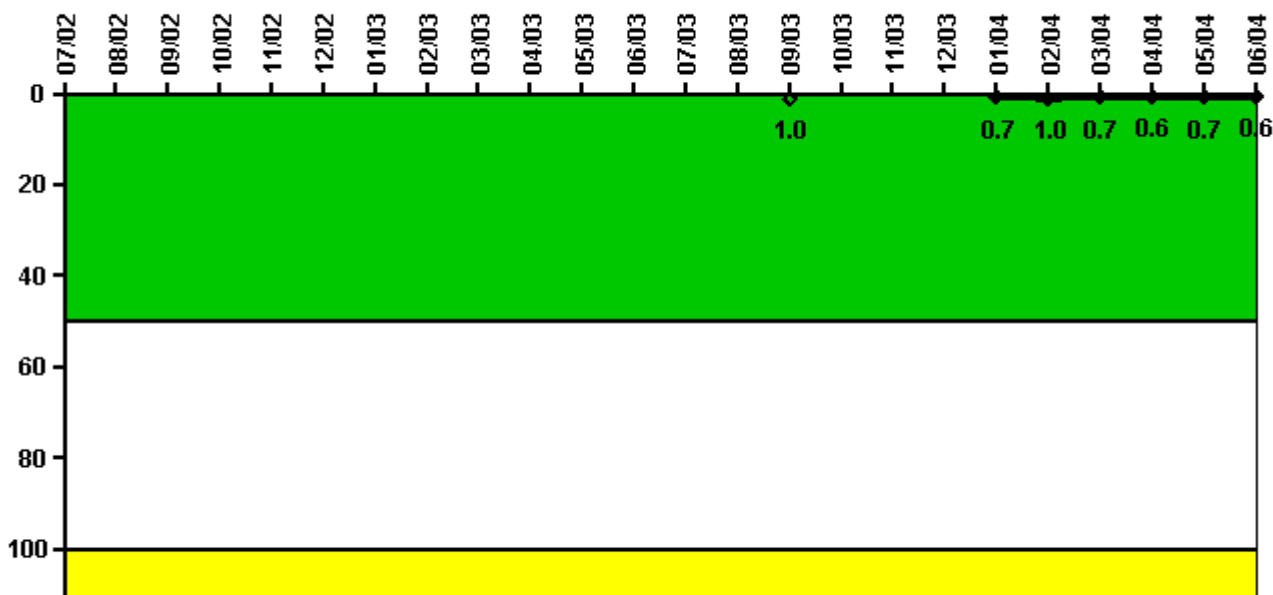
Notes

Reactor Coolant System Activity	7/02	8/02	9/02	10/02	11/02	12/02	1/03	2/03	3/03	4/03	5/03	6/03
Maximum activity	N/A	N/A	N/A	N/A	N/A	N/A	N/A	N/A	N/A	N/A	N/A	N/A
Technical specification limit	1.0	1.0	1.0	1.0	1.0	1.0	1.0	1.0	1.0	1.0	1.0	1.0
Indicator value	N/A	N/A	N/A	N/A	N/A	N/A	N/A	N/A	N/A	N/A	N/A	N/A

Reactor Coolant System Activity	7/03	8/03	9/03	10/03	11/03	12/03	1/04	2/04	3/04	4/04	5/04	6/04
Maximum activity	N/A	N/A	N/A	N/A	N/A	N/A	N/A	N/A	N/A	0.006300	0.007400	0.007600
Technical specification limit	1.0	1.0	1.0	1.0	1.0	1.0	1.0	1.0	1.0	1.0	1.0	1.0
Indicator value	N/A	N/A	N/A	N/A	N/A	N/A	N/A	N/A	N/A	0.6	0.7	0.8

Licensee Comments: none

Reactor Coolant System Leakage



Thresholds: White > 50.0 Yellow > 100.0

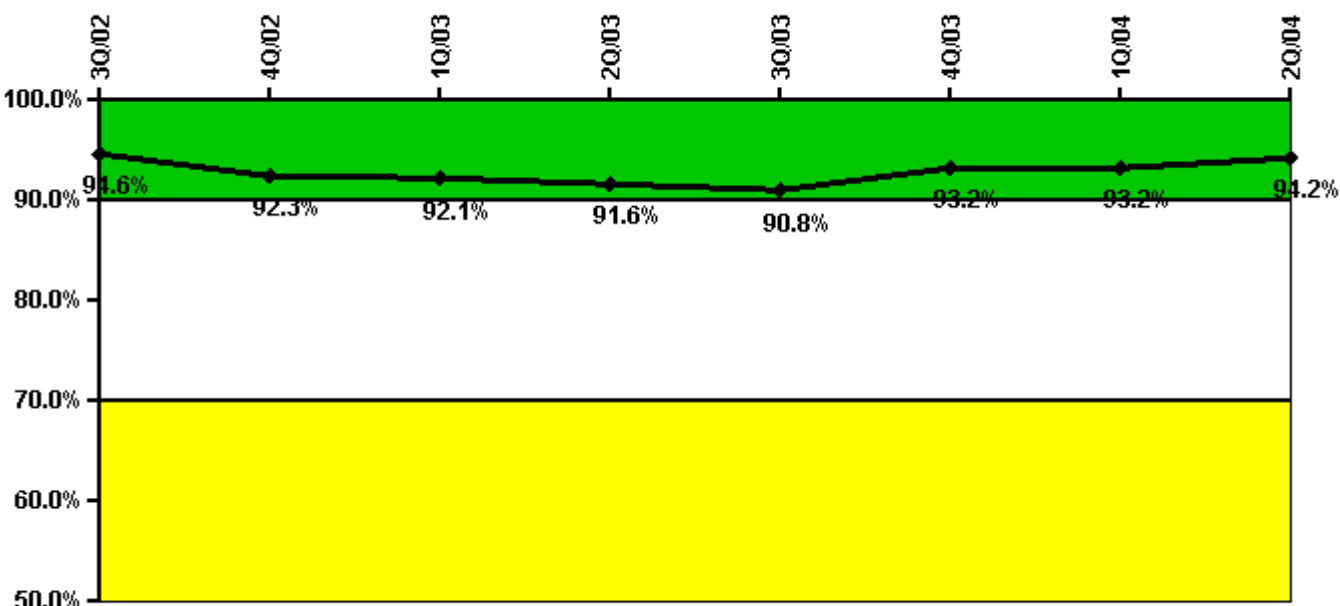
Notes

Reactor Coolant System Leakage	7/02	8/02	9/02	10/02	11/02	12/02	1/03	2/03	3/03	4/03	5/03	6/03
Maximum leakage	N/A	N/A	N/A	N/A	N/A	N/A	N/A	N/A	N/A	N/A	N/A	N/A
Technical specification limit	10.0	10.0	10.0	10.0	10.0	10.0	10.0	10.0	10.0	10.0	10.0	10.0
Indicator value	N/A	N/A	N/A	N/A	N/A	N/A	N/A	N/A	N/A	N/A	N/A	N/A

Reactor Coolant System Leakage	7/03	8/03	9/03	10/03	11/03	12/03	1/04	2/04	3/04	4/04	5/04	6/04
Maximum leakage	N/A	N/A	0.100	N/A	N/A	N/A	0.069	0.099	0.071	0.062	0.070	0.064
Technical specification limit	10.0	10.0	10.0	10.0	10.0	10.0	10.0	10.0	10.0	10.0	10.0	10.0
Indicator value	N/A	N/A	1.0	N/A	N/A	N/A	0.7	1.0	0.7	0.6	0.7	0.6

Licensee Comments: none

Drill/Exercise Performance



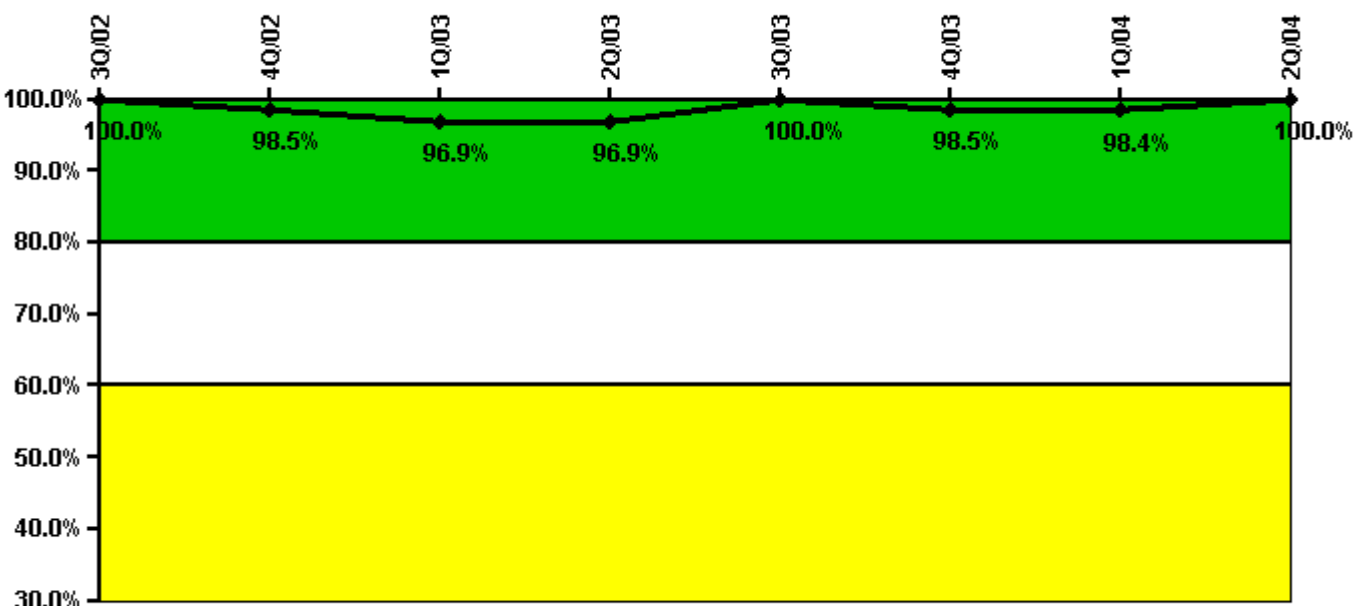
Thresholds: White < 90.0% Yellow < 70.0%

Notes

Drill/Exercise Performance	3Q/02	4Q/02	1Q/03	2Q/03	3Q/03	4Q/03	1Q/04	2Q/04
Successful opportunities	13.0	23.0	0	29.0	17.0	48.0	0	16.0
Total opportunities	14.0	26.0	0	30.0	19.0	50.0	0	16.0
Indicator value	94.6%	92.3%	92.1%	91.6%	90.8%	93.2%	93.2%	94.2%

Licensee Comments: none

ERO Drill Participation



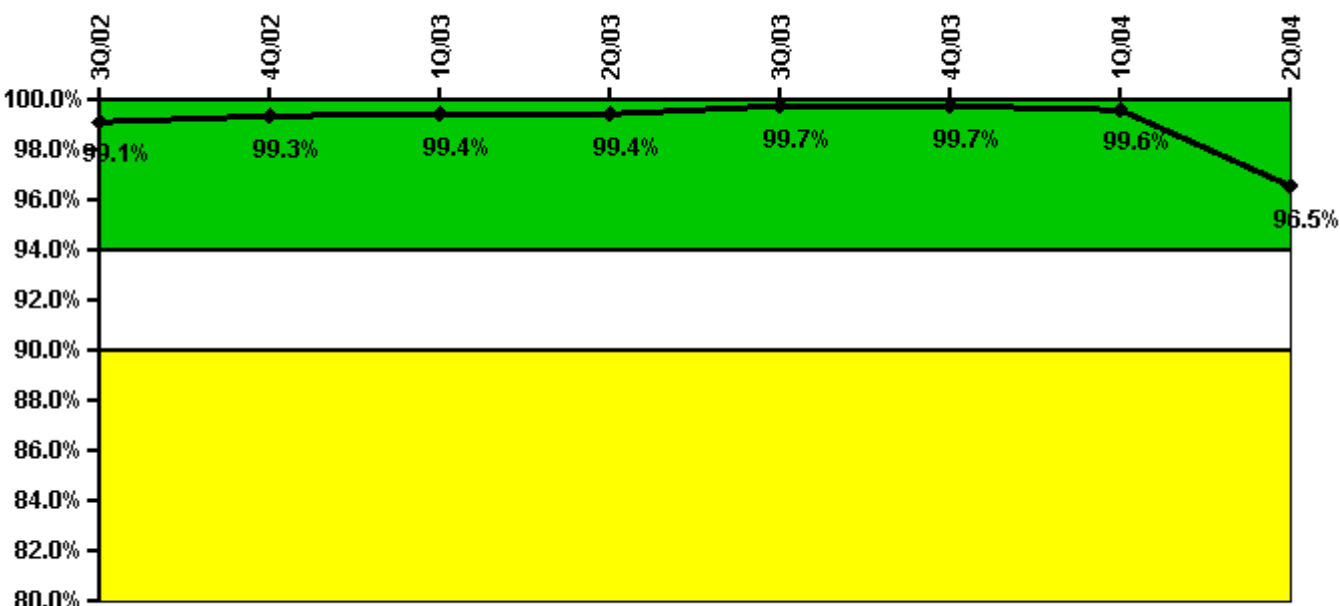
Thresholds: White < 80.0% Yellow < 60.0%

Notes

ERO Drill Participation	3Q/02	4Q/02	1Q/03	2Q/03	3Q/03	4Q/03	1Q/04	2Q/04
Participating Key personnel	68.0	65.0	63.0	62.0	64.0	65.0	63.0	66.0
Total Key personnel	68.0	66.0	65.0	64.0	64.0	66.0	64.0	66.0
Indicator value	100.0%	98.5%	96.9%	96.9%	100.0%	98.5%	98.4%	100.0%

Licensee Comments: none

Alert & Notification System



Thresholds: White < 94.0% Yellow < 90.0%

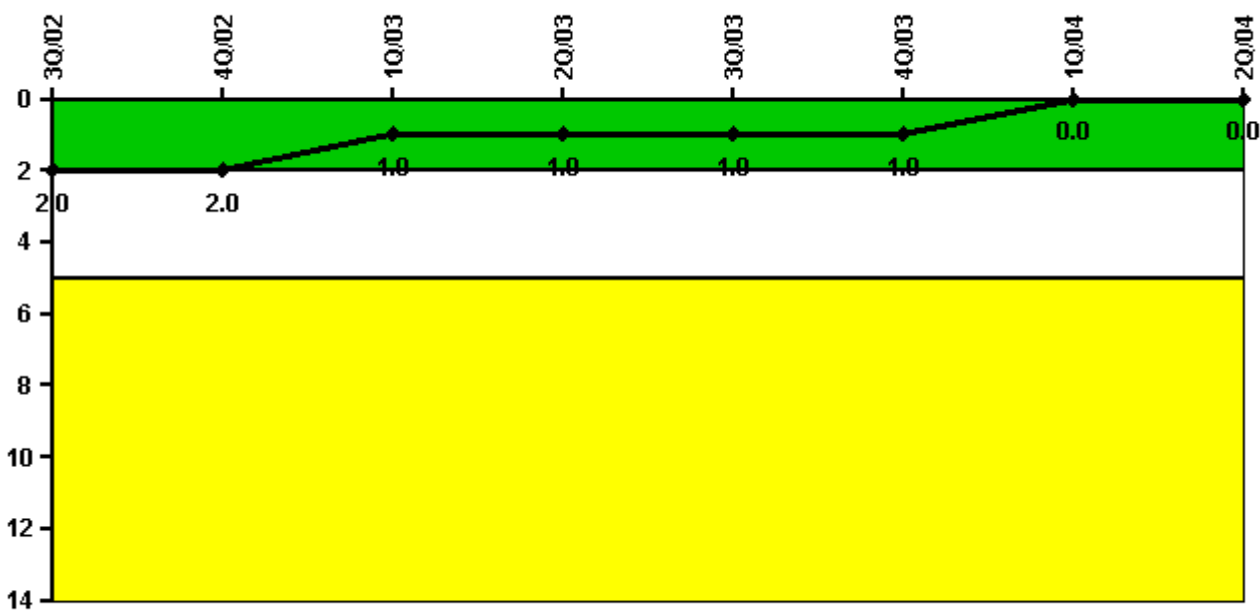
Notes

Alert & Notification System	3Q/02	4Q/02	1Q/03	2Q/03	3Q/03	4Q/03	1Q/04	2Q/04
Successful siren-tests	160	162	214	162	162	162	213	1234
Total sirens-tests	162	162	216	162	162	162	216	1296
Indicator value	99.1%	99.3%	99.4%	99.4%	99.7%	99.7%	99.6%	96.5%

Licensee Comments:

2Q/04: Number of siren tests increased utilizing silent tests after system test failure in May 2004 to improve system confidence and based on industry benchmarking. Per FEMA, this is not a significant change to the approved testing, and FEMA approval not required prior to implementation.

Occupational Exposure Control Effectiveness



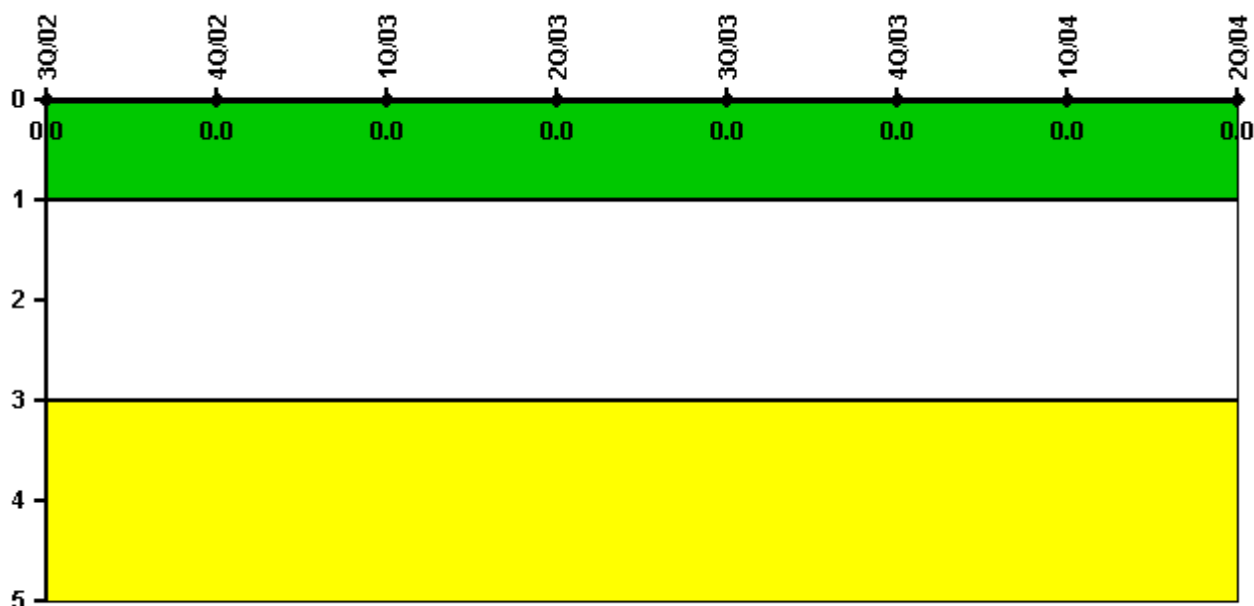
Thresholds: White > 2.0 Yellow > 5.0

Notes

Occupational Exposure Control Effectiveness	3Q/02	4Q/02	1Q/03	2Q/03	3Q/03	4Q/03	1Q/04	2Q/04
High radiation area occurrences	0	0	1	0	0	0	0	0
Very high radiation area occurrences	0	0	0	0	0	0	0	0
Unintended exposure occurrences	0	0	0	0	0	0	0	0
Indicator value	2	2	1	1	1	1	0	0

Licensee Comments: none

RETS/ODCM Radiological Effluent



Thresholds: White > 1.0 Yellow > 3.0

Notes

RETS/ODCM Radiological Effluent	3Q/02	4Q/02	1Q/03	2Q/03	3Q/03	4Q/03	1Q/04	2Q/04
RETS/ODCM occurrences	0	0	0	0	0	0	0	0
Indicator value	0	0	0	0	0	0	0	0

Licensee Comments: none

[Physical Protection](#) information not publicly available.

▲ [Action Matrix Summary](#) | [Inspection Findings Summary](#) | [PI Summary](#) | [Reactor Oversight Process](#)

Last Modified: September 8, 2004