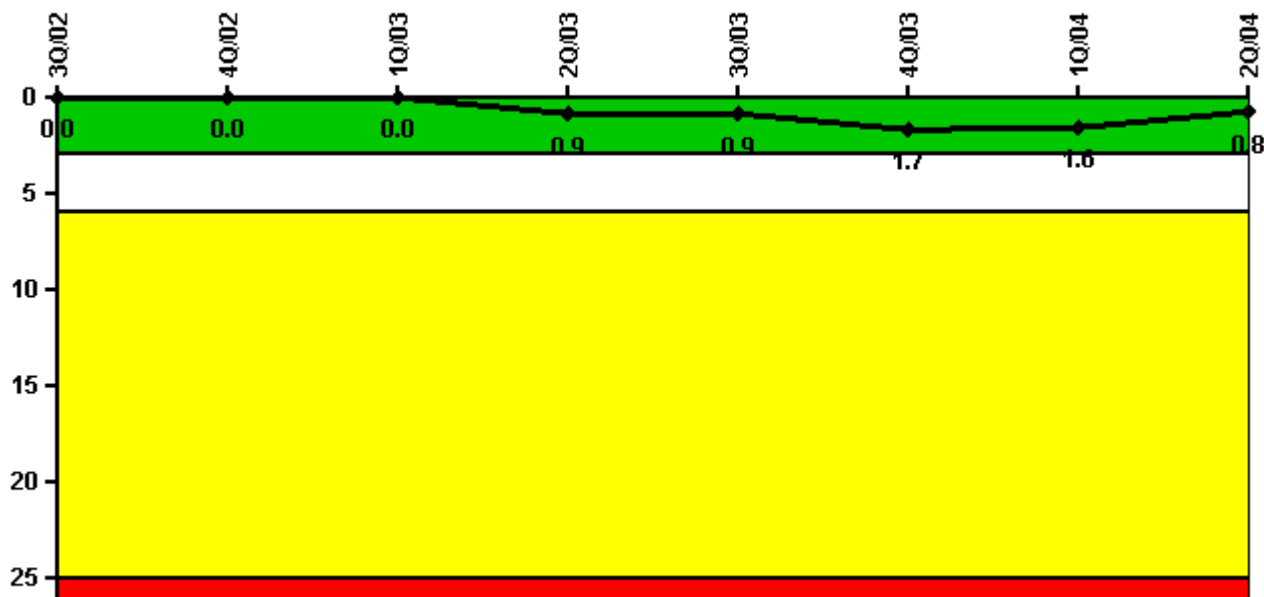


## Brunswick 2

### 2Q/2004 Performance Indicators

Licensee's General Comments: none

#### Unplanned Scrams per 7000 Critical Hrs



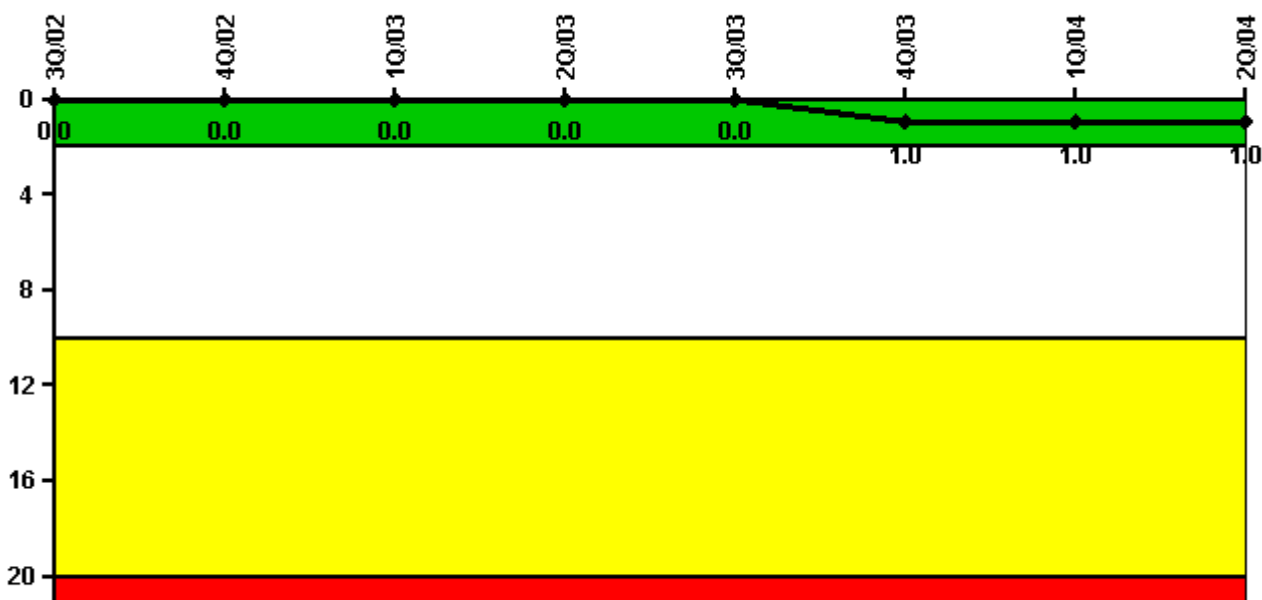
**Thresholds: White > 3.0 Yellow > 6.0 Red > 25.0**

#### Notes

Unplanned Scrams per 7000 Critical Hrs	3Q/02	4Q/02	1Q/03	2Q/03	3Q/03	4Q/03	1Q/04	2Q/04
Unplanned scrams	0	0	0	1.0	0	1.0	0	0
Critical hours	2208.0	2209.0	1583.9	2128.7	2208.0	2135.8	2184.0	2134.2
Indicator value	0	0	0	0.9	0.9	1.7	1.6	0.8

Licensee Comments: none

### Scrams with Loss of Normal Heat Removal



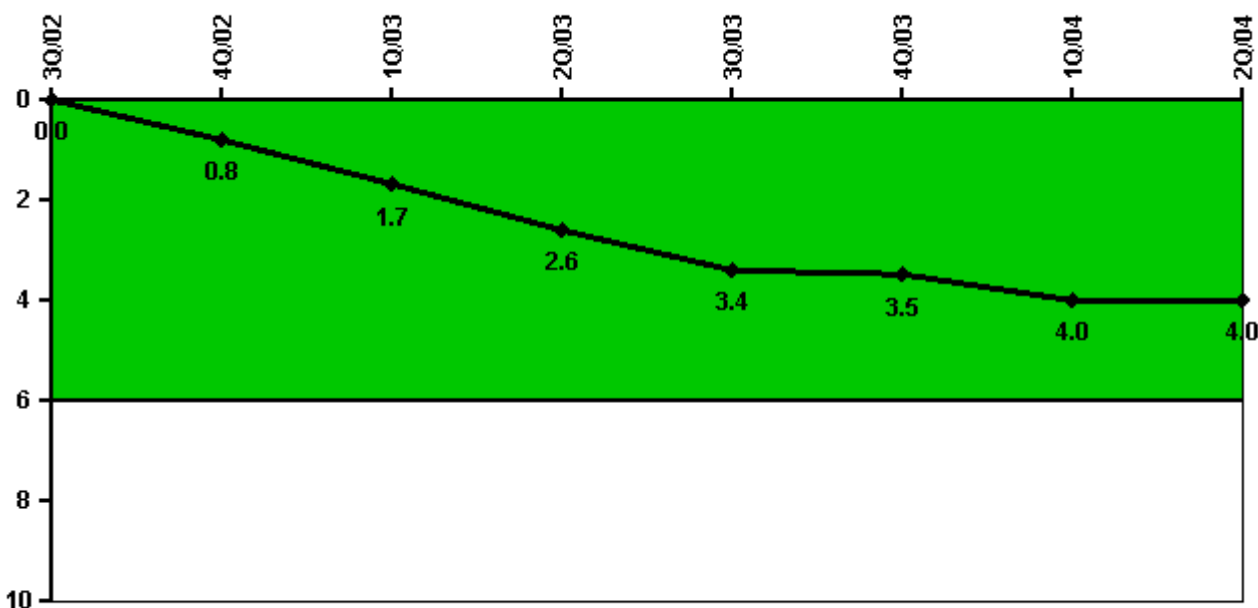
Thresholds: White > 2.0 Yellow > 10.0 Red > 20.0

#### Notes

Scrams with Loss of Normal Heat Removal	3Q/02	4Q/02	1Q/03	2Q/03	3Q/03	4Q/03	1Q/04	2Q/04
Scrams	0	0	0	0	0	1.0	0	0
Indicator value	0	0	0	0	0	1.0	1.0	1.0

Licensee Comments: none

### Unplanned Power Changes per 7000 Critical Hrs



Thresholds: White > 6.0

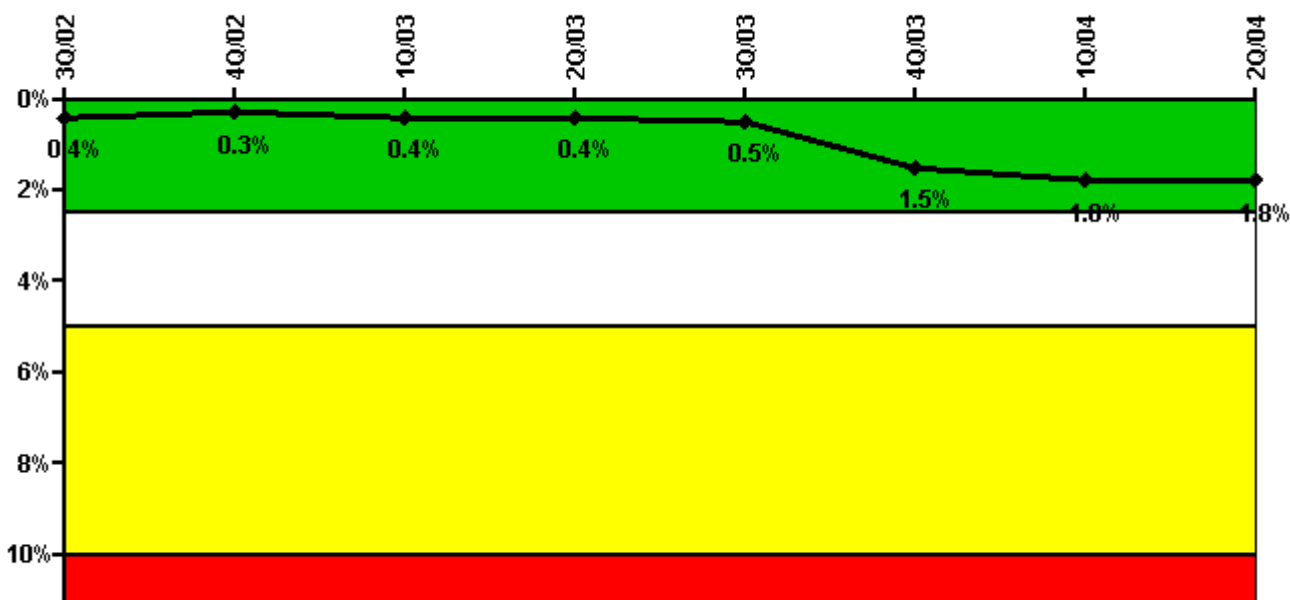
#### Notes

Unplanned Power Changes per 7000 Critical Hrs	3Q/02	4Q/02	1Q/03	2Q/03	3Q/03	4Q/03	1Q/04	2Q/04
Unplanned power changes	0	1.0	1.0	1.0	1.0	1.0	2.0	1.0
Critical hours	2208.0	2209.0	1583.9	2128.7	2208.0	2135.8	2184.0	2134.2
Indicator value	0	0.8	1.7	2.6	3.4	3.5	4.0	4.0

Licensee Comments:

2Q/04: An FAQ will be submitted to document an anticipated power reduction caused by expected external factors. This event is not being counted in the current report based on NEI 99-02 guidance.

### Safety System Unavailability, Emergency AC Power



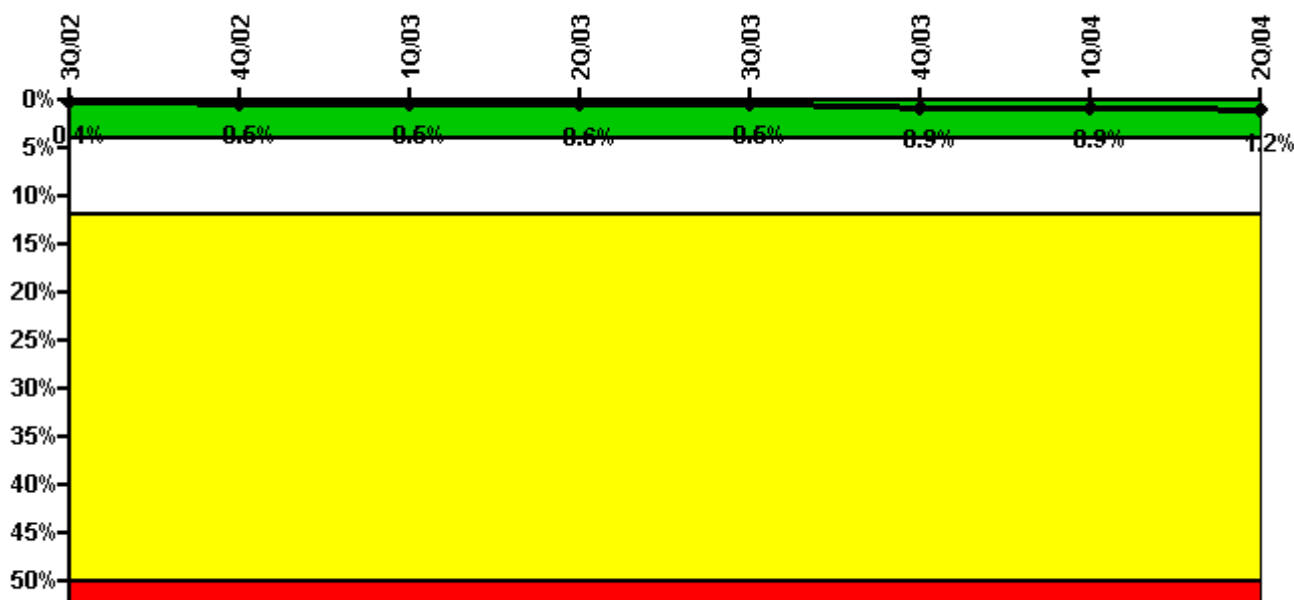
Thresholds: White > 2.5% Yellow > 5.0% Red > 10.0%

#### Notes

Safety System Unavailability, Emergency AC Power	3Q/02	4Q/02	1Q/03	2Q/03	3Q/03	4Q/03	1Q/04	2Q/04
<b>Train 1</b>								
Planned unavailable hours	1.38	0.65	50.28	6.26	13.75	13.50	29.17	1.04
Unplanned unavailable hours	0	0	0	0	13.97	4.75	18.35	0
Fault exposure hours	0	0	0	0	0	559.25	93.35	0
Effective Reset hours	0	0	0	0	0	0	0	0
Required hours	2208.00	2209.00	2160.00	2183.00	2208.00	2209.00	2184.00	2183.00
<b>Train 2</b>								
Planned unavailable hours	0.54	62.05	4.23	1.38	0.84	7.23	1.19	19.15
Unplanned unavailable hours	0	0	0	8.72	12.84	0	0	0
Fault exposure hours	0	0	0	0	0	0	0	0
Effective Reset hours	0	0	0	0	0	0	0	0
Required hours	2208.00	2209.00	2160.00	2183.00	2208.00	2209.00	2184.00	2183.00
<b>Indicator value</b>	<b>0.4%</b>	<b>0.3%</b>	<b>0.4%</b>	<b>0.4%</b>	<b>0.5%</b>	<b>1.5%</b>	<b>1.8%</b>	<b>1.8%</b>

Licensee Comments: none

### Safety System Unavailability, High Pressure Injection System (HPCI)



Thresholds: White > 4.0% Yellow > 12.0% Red > 50.0%

#### Notes

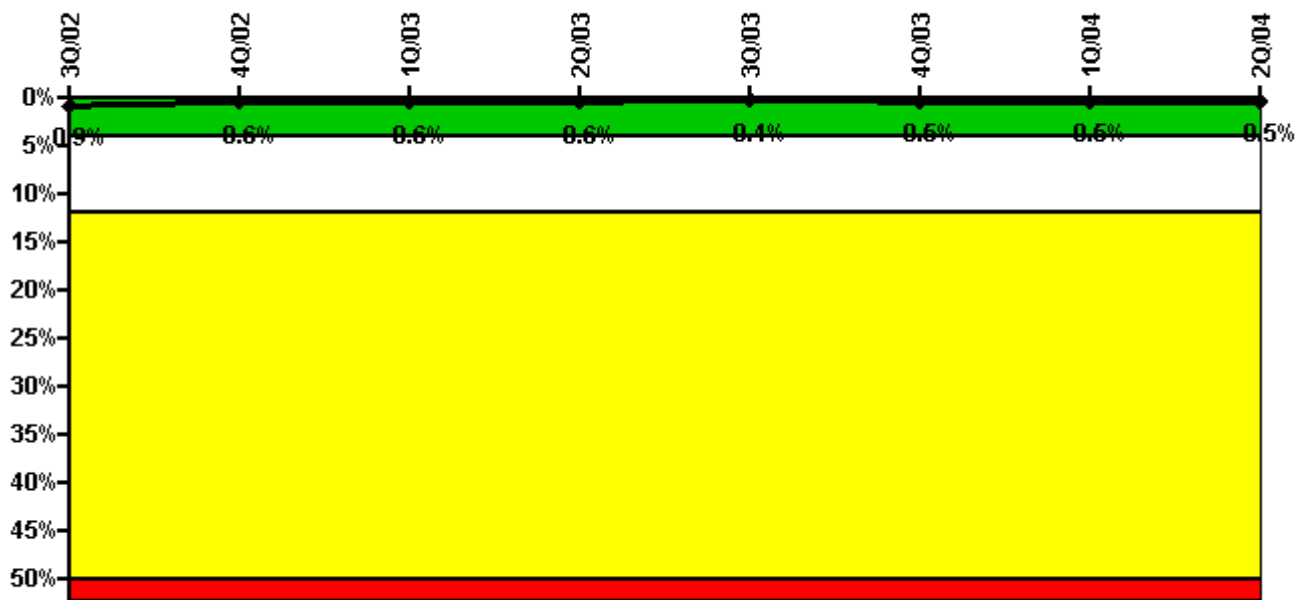
Safety System Unavailability, High Pressure Injection System (HPCI)	3Q/02	4Q/02	1Q/03	2Q/03	3Q/03	4Q/03	1Q/04	2Q/04
<b>Train 1</b>								
Planned unavailable hours	0.20	21.80	0.40	18.30	0.30	95.40	5.90	17.30
Unplanned unavailable hours	0	13.00	0	0	0	0	0	32.90
Fault exposure hours	0	0	1.10	0	0	0	1.83	32.67
Effective Reset hours	0	0	0	0	0	0	0	0
Required hours	2208.00	2209.00	1583.90	2128.70	2208.00	2135.80	2184.00	2134.20
<b>Indicator value</b>	<b>0.4%</b>	<b>0.5%</b>	<b>0.5%</b>	<b>0.6%</b>	<b>0.5%</b>	<b>0.9%</b>	<b>0.9%</b>	<b>1.2%</b>

Licensee Comments:

2Q/04: Added fault exposure hours to Train 1 HPCI Unit 2 as follows: 2.5 in May 2002, 1.1 in February 2003, and 1.8 in January 2004 to account for a newly identified faulted condition based on a recent engineering evaluation. Results are still within the green band.

1Q/04: Added fault exposure hours to Train 1 HPCI Unit 2 as follows: 2.5 in May 2002, 1.1 in February 2003, and 1.8 in January 2004 to account for a newly identified faulted condition based on a recent engineering evaluation. Results are still within the green band.

### Safety System Unavailability, Heat Removal System (RCIC)



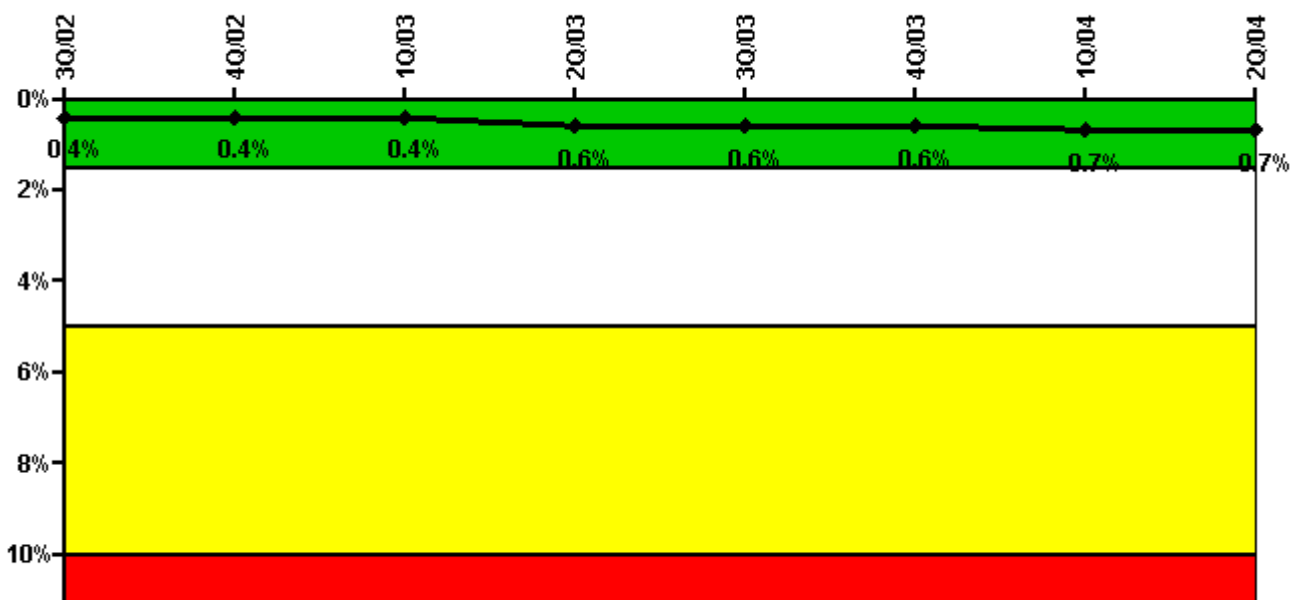
Thresholds: White > 4.0% Yellow > 12.0% Red > 50.0%

#### Notes

Safety System Unavailability, Heat Removal System (RCIC)	3Q/02	4Q/02	1Q/03	2Q/03	3Q/03	4Q/03	1Q/04	2Q/04
<b>Train 1</b>								
Planned unavailable hours	1.60	22.40	13.60	0.30	17.70	13.10	0.40	6.50
Unplanned unavailable hours	0	0	0	0	0	0	0	0
Fault exposure hours	0	0	0	0	0	0	0	0
Effective Reset hours	0	0	0	0	0	0	0	0
Required hours	2208.00	2209.00	1583.90	2128.70	2208.00	2135.80	2184.00	2134.20
<b>Indicator value</b>	<b>0.9%</b>	<b>0.6%</b>	<b>0.6%</b>	<b>0.6%</b>	<b>0.4%</b>	<b>0.5%</b>	<b>0.5%</b>	<b>0.5%</b>

Licensee Comments: none

### Safety System Unavailability, Residual Heat Removal System



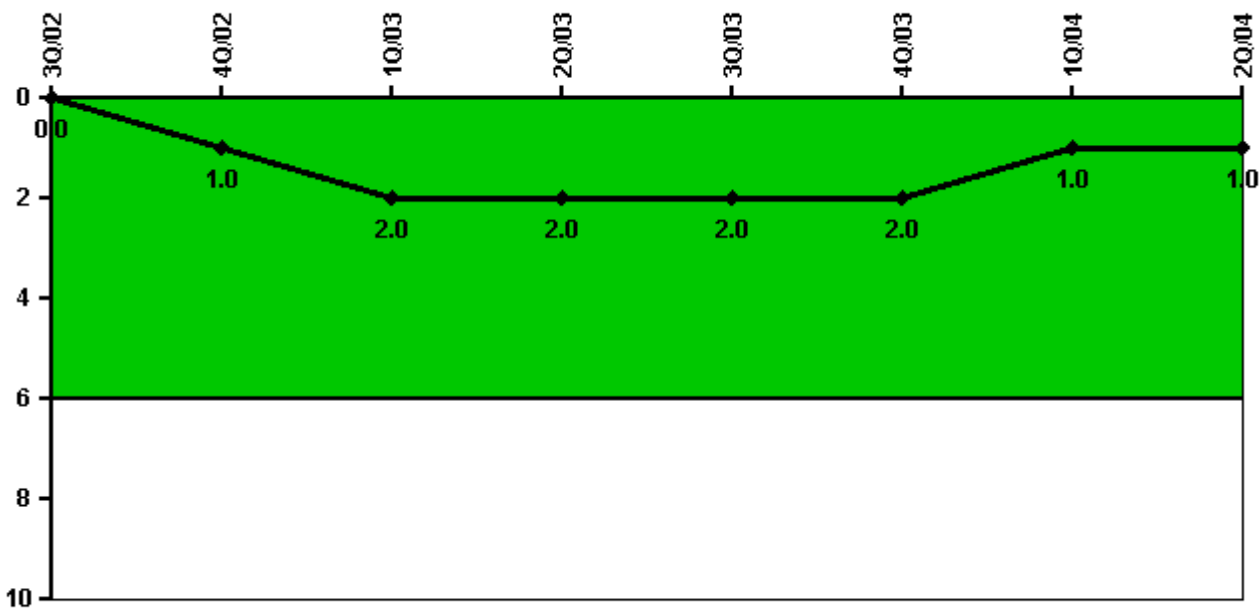
Thresholds: White > 1.5% Yellow > 5.0% Red > 10.0%

#### Notes

Safety System Unavailability, Residual Heat Removal System	3Q/02	4Q/02	1Q/03	2Q/03	3Q/03	4Q/03	1Q/04	2Q/04
<b>Train 1</b>								
Planned unavailable hours	0	16.00	0	11.60	0	0	69.80	0
Unplanned unavailable hours	0	0	0	0	0	0	0	0
Fault exposure hours	0	0	0	0	0	0	0	0
Effective Reset hours	0	0	0	0	0	0	0	0
Required hours	2208.00	2209.00	2160.00	2183.00	2208.00	2209.00	2184.00	2183.00
<b>Train 2</b>								
Planned unavailable hours	0.50	0	16.70	142.20	0	19.50	2.80	19.40
Unplanned unavailable hours	0	0	0	0	0	0	0	0
Fault exposure hours	0	0	0	0	0	0	0	0
Effective Reset hours	0	0	0	0	0	0	0	0
Required hours	2208.00	2209.00	2160.00	2183.00	2208.00	2209.00	2184.00	2183.00
<b>Indicator value</b>	<b>0.4%</b>	<b>0.4%</b>	<b>0.4%</b>	<b>0.6%</b>	<b>0.6%</b>	<b>0.6%</b>	<b>0.7%</b>	<b>0.7%</b>

Licensee Comments: none

### Safety System Functional Failures (BWR)



Thresholds: White > 6.0

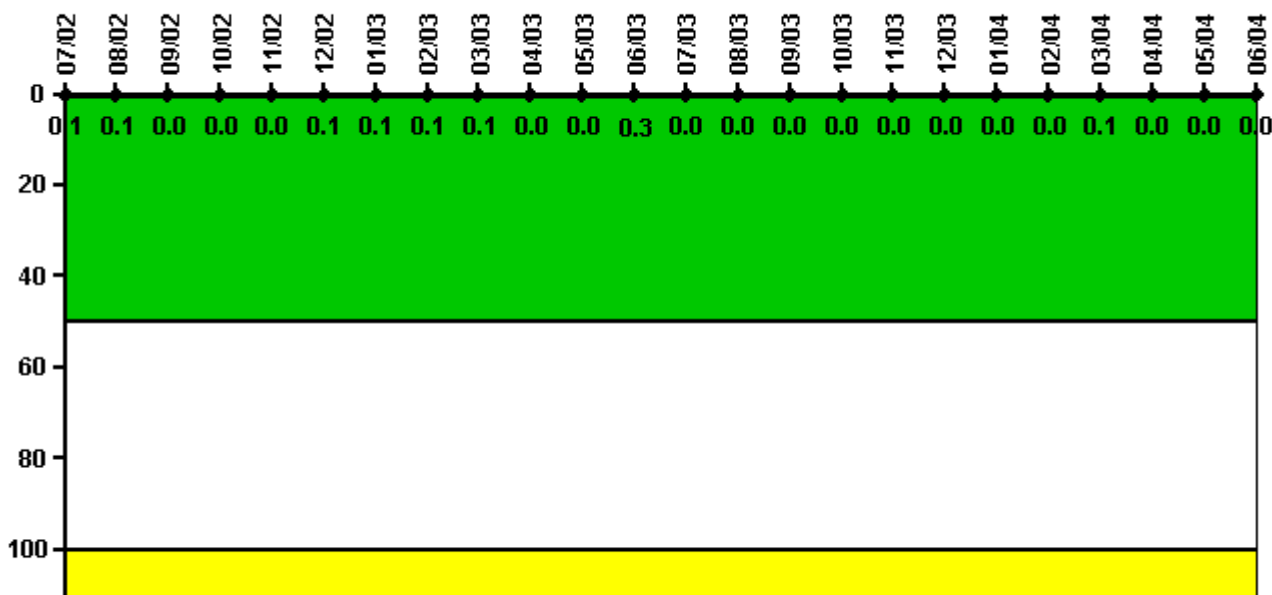
#### Notes

Safety System Functional Failures (BWR)	3Q/02	4Q/02	1Q/03	2Q/03	3Q/03	4Q/03	1Q/04	2Q/04
Safety System Functional Failures	0	1	1	0	0	1	0	0
Indicator value	0	1	2	2	2	2	1	1

Licensee Comments: none



### Reactor Coolant System Activity



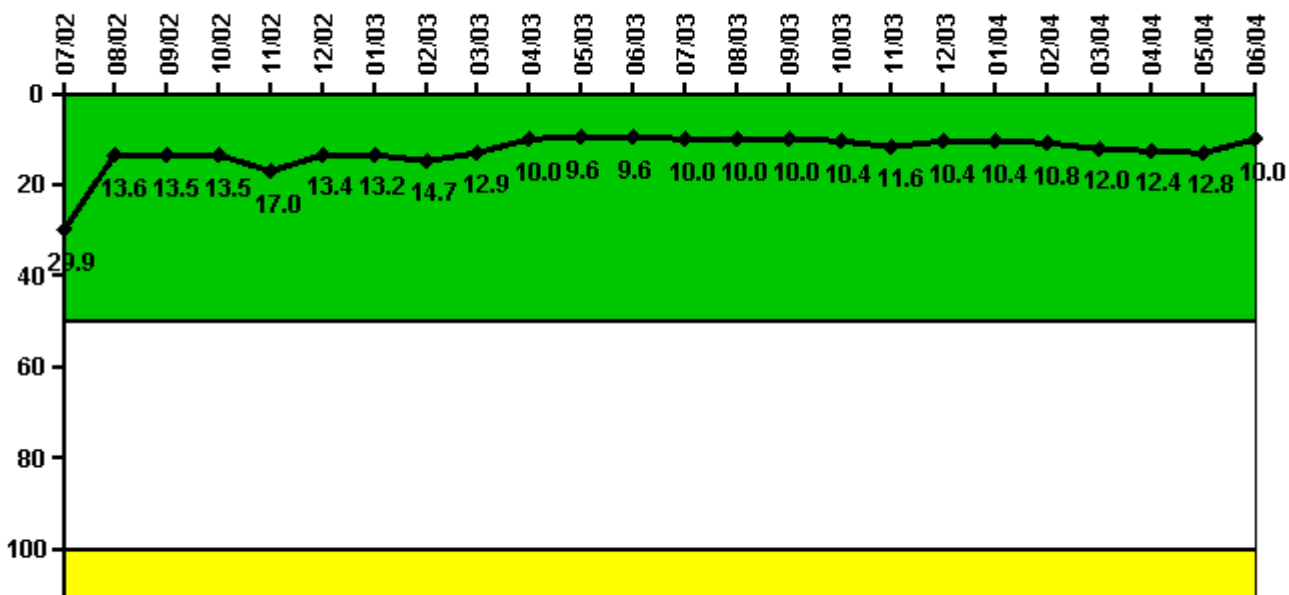
Thresholds: White > 50.0 Yellow > 100.0

### Notes

Reactor Coolant System Activity	7/02	8/02	9/02	10/02	11/02	12/02	1/03	2/03	3/03	4/03	5/03	6/03
Maximum activity	0.000123	0.000102	0.000073	0.000062	0.000050	0.000122	0.000130	0.000145	0.000138	0.000034	0.000033	0.000653
Technical specification limit	0.2	0.2	0.2	0.2	0.2	0.2	0.2	0.2	0.2	0.2	0.2	0.2
Indicator value	0.1	0.1	0	0	0	0.1	0.1	0.1	0.1	0	0	0.3
Reactor Coolant System Activity	7/03	8/03	9/03	10/03	11/03	12/03	1/04	2/04	3/04	4/04	5/04	6/04
Maximum activity	0.000059	0.000034	0.000028	0.000043	0.000046	0.000057	0.000081	0.000053	0.000104	0.000080	0.000079	0.000073
Technical specification limit	0.2	0.2	0.2	0.2	0.2	0.2	0.2	0.2	0.2	0.2	0.2	0.2
Indicator value	0	0	0	0	0	0	0	0	0.1	0	0	0

Licensee Comments: none

### Reactor Coolant System Leakage



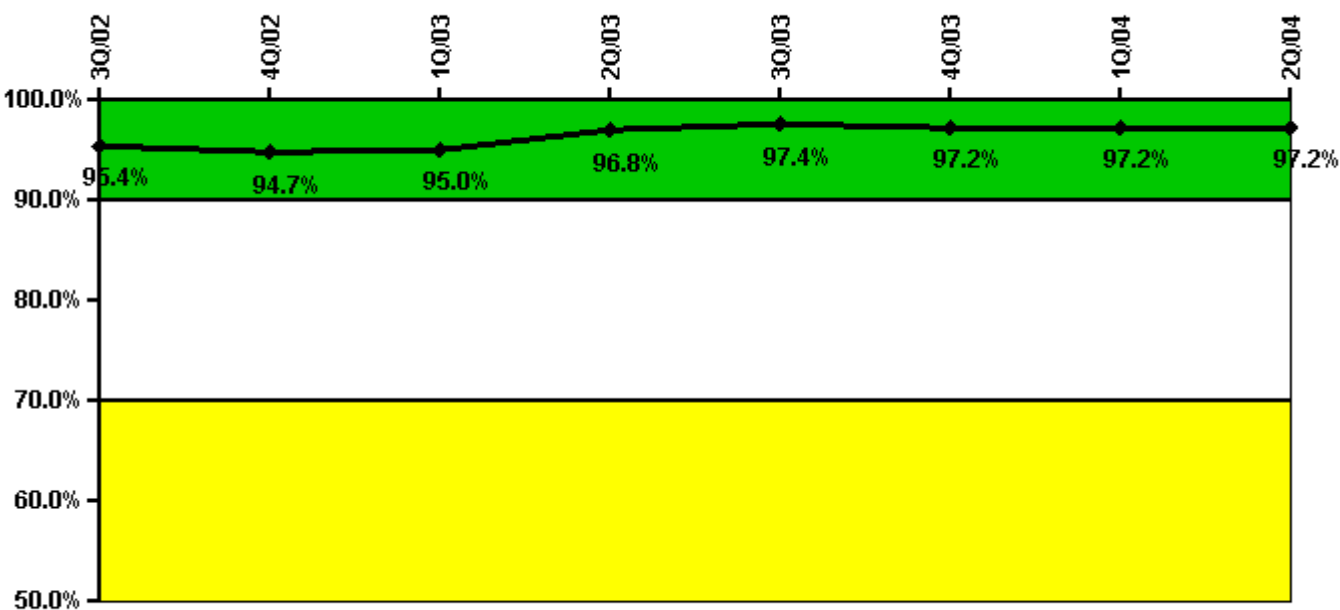
Thresholds: White > 50.0 Yellow > 100.0

#### Notes

Reactor Coolant System Leakage	7/02	8/02	9/02	10/02	11/02	12/02	1/03	2/03	3/03	4/03	5/03	6/03
Maximum leakage	7.475	3.400	3.363	3.368	4.262	3.346	3.311	3.669	3.235	2.500	2.400	2.400
Technical specification limit	25.0	25.0	25.0	25.0	25.0	25.0	25.0	25.0	25.0	25.0	25.0	25.0
Indicator value	29.9	13.6	13.5	13.5	17.0	13.4	13.2	14.7	12.9	10.0	9.6	9.6
Reactor Coolant System Leakage	7/03	8/03	9/03	10/03	11/03	12/03	1/04	2/04	3/04	4/04	5/04	6/04
Maximum leakage	2.500	2.500	2.500	2.600	2.900	2.600	2.600	2.700	3.000	3.100	3.200	2.500
Technical specification limit	25.0	25.0	25.0	25.0	25.0	25.0	25.0	25.0	25.0	25.0	25.0	25.0
Indicator value	10.0	10.0	10.0	10.4	11.6	10.4	10.4	10.8	12.0	12.4	12.8	10.0

Licensee Comments: none

### Drill/Exercise Performance



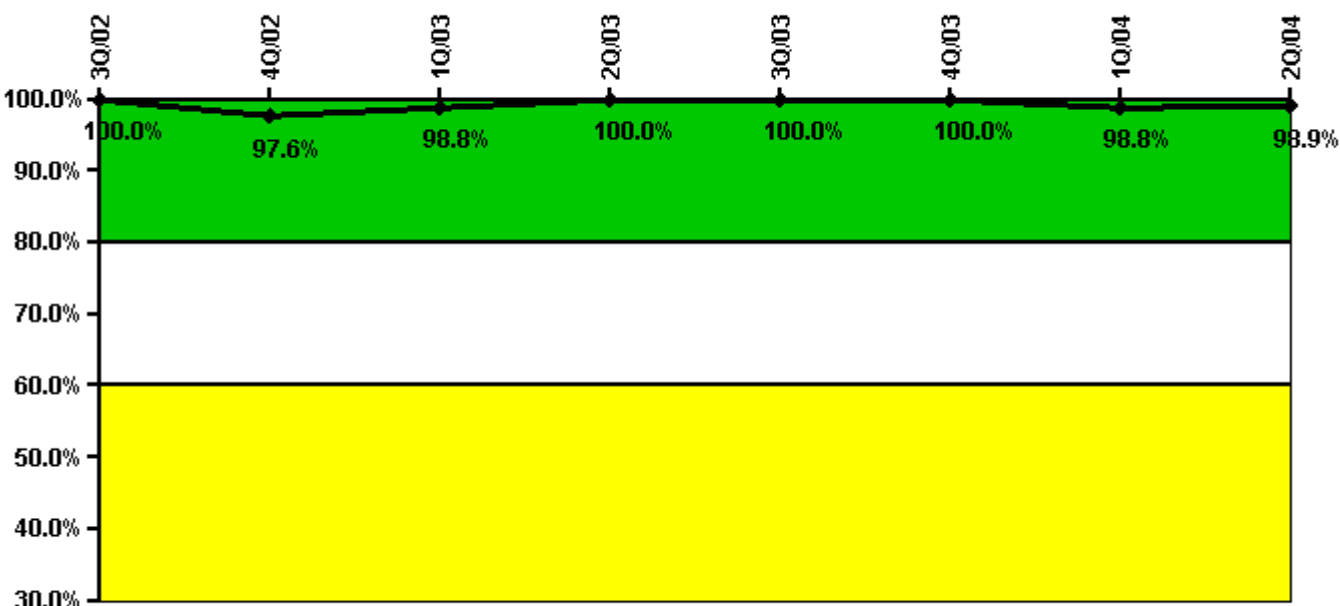
Thresholds: White < 90.0% Yellow < 70.0%

#### Notes

Drill/Exercise Performance	3Q/02	4Q/02	1Q/03	2Q/03	3Q/03	4Q/03	1Q/04	2Q/04
Successful opportunities	46.0	21.0	8.0	51.0	36.0	10.0	0	0
Total opportunities	48.0	22.0	8.0	52.0	37.0	10.0	0	0
Indicator value	95.4%	94.7%	95.0%	96.8%	97.4%	97.2%	97.2%	97.2%

Licensee Comments: none

### ERO Drill Participation



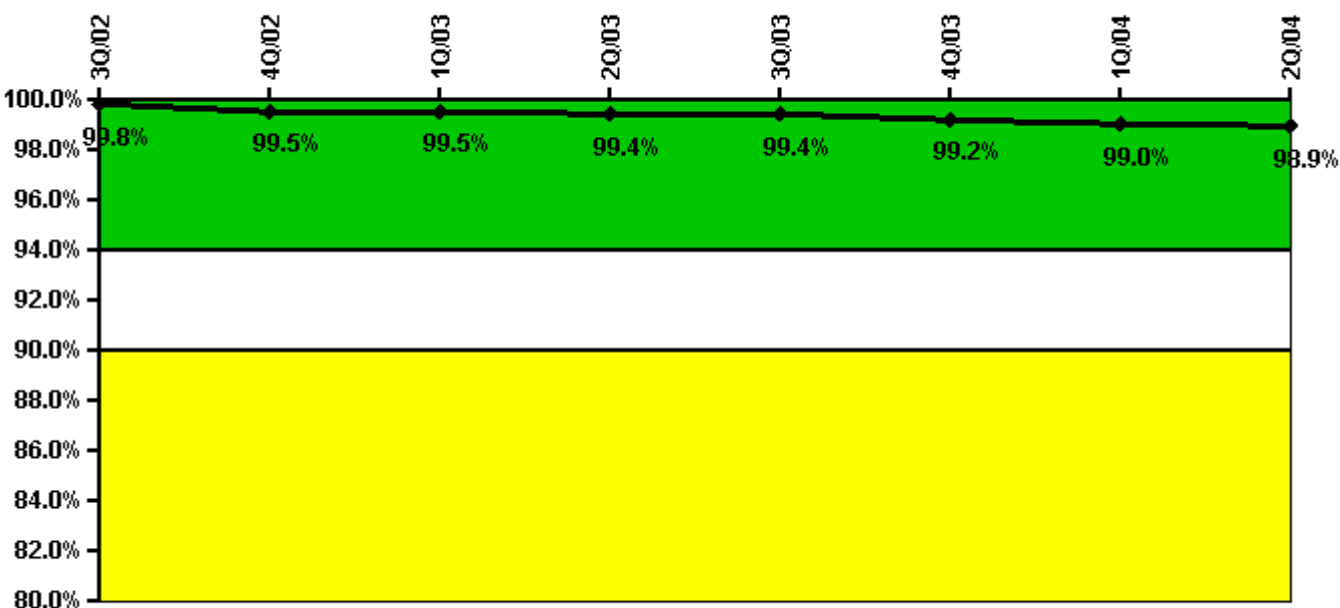
Thresholds: White < 80.0% Yellow < 60.0%

#### Notes

ERO Drill Participation	3Q/02	4Q/02	1Q/03	2Q/03	3Q/03	4Q/03	1Q/04	2Q/04
Participating Key personnel	83.0	81.0	81.0	82.0	93.0	88.0	83.0	86.0
Total Key personnel	83.0	83.0	82.0	82.0	93.0	88.0	84.0	87.0
Indicator value	100.0%	97.6%	98.8%	100.0%	100.0%	100.0%	98.8%	98.9%

Licensee Comments: none

### Alert & Notification System



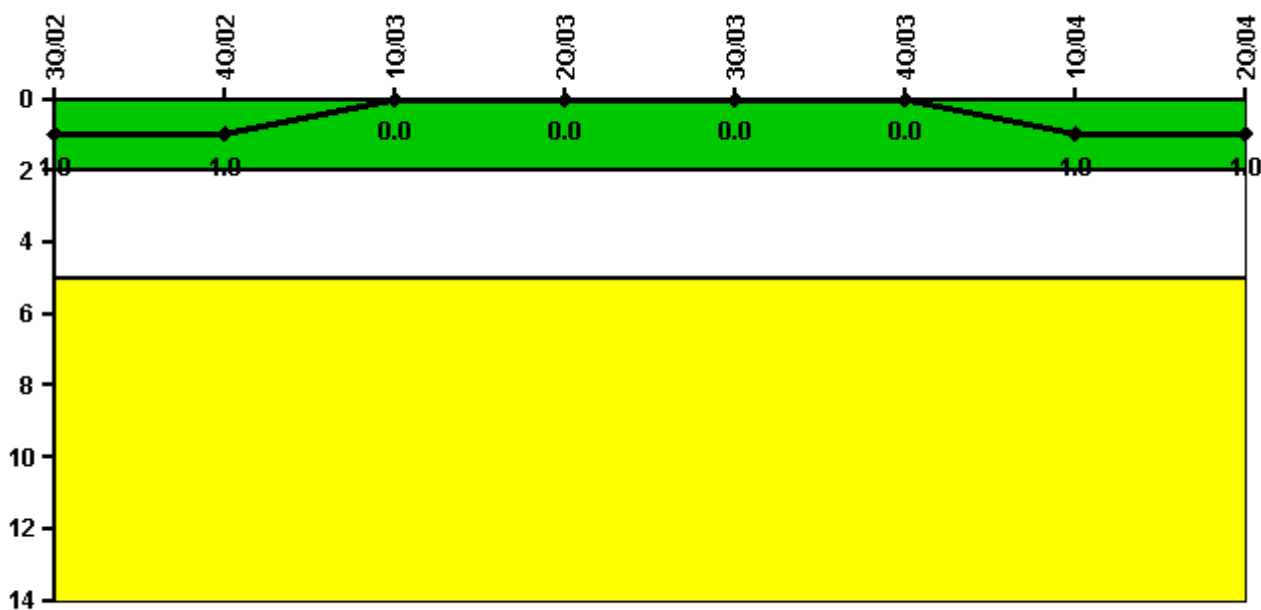
Thresholds: White < 94.0% Yellow < 90.0%

#### Notes

Alert & Notification System	3Q/02	4Q/02	1Q/03	2Q/03	3Q/03	4Q/03	1Q/04	2Q/04
Successful siren-tests	252	319	252	286	252	317	285	356
Total sirens-tests	252	324	252	288	252	324	288	360
Indicator value	99.8%	99.5%	99.5%	99.4%	99.4%	99.2%	99.0%	98.9%

Licensee Comments: none

### Occupational Exposure Control Effectiveness



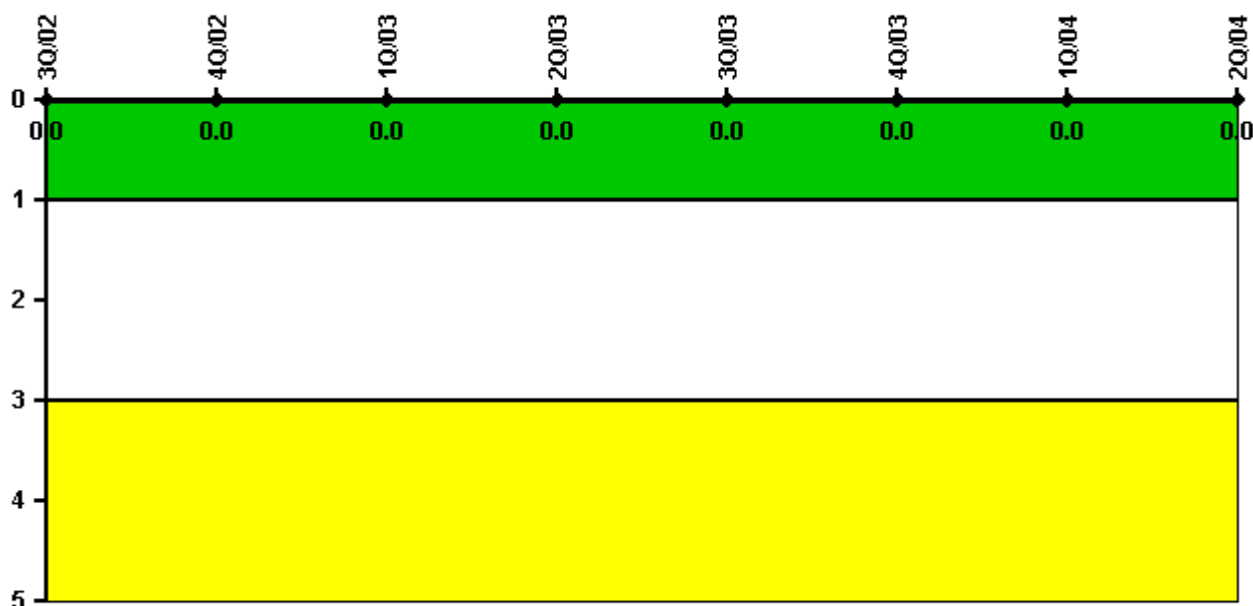
Thresholds: White > 2.0 Yellow > 5.0

#### Notes

Occupational Exposure Control Effectiveness	3Q/02	4Q/02	1Q/03	2Q/03	3Q/03	4Q/03	1Q/04	2Q/04
High radiation area occurrences	0	0	0	0	0	0	0	0
Very high radiation area occurrences	0	0	0	0	0	0	0	0
Unintended exposure occurrences	0	0	0	0	0	0	1	0
<b>Indicator value</b>	<b>1</b>	<b>1</b>	<b>0</b>	<b>0</b>	<b>0</b>	<b>0</b>	<b>1</b>	<b>1</b>

Licensee Comments: none

### RETS/ODCM Radiological Effluent



Thresholds: White > 1.0 Yellow > 3.0

#### Notes

RETS/ODCM Radiological Effluent	3Q/02	4Q/02	1Q/03	2Q/03	3Q/03	4Q/03	1Q/04	2Q/04
RETS/ODCM occurrences	0	0	0	0	0	0	0	0
Indicator value	0	0	0	0	0	0	0	0

Licensee Comments: none

[Physical Protection](#) information not publicly available.

▲ [Action Matrix Summary](#) | [Inspection Findings Summary](#) | [PI Summary](#) | [Reactor Oversight Process](#)

Last Modified: September 8, 2004