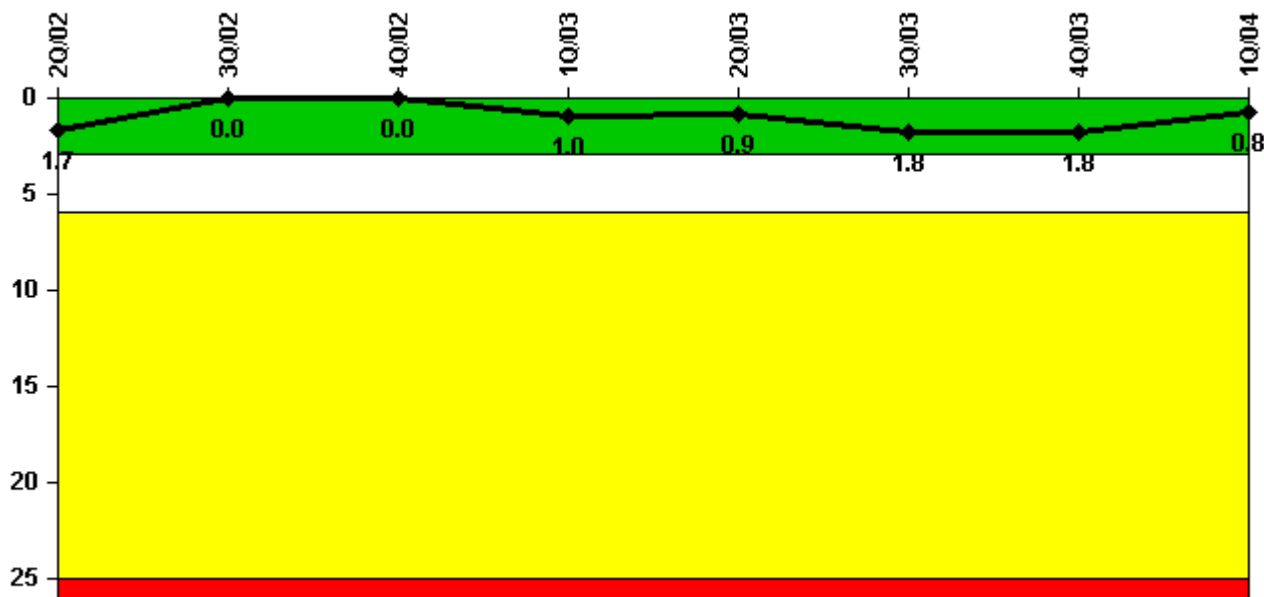


La Salle 2

1Q/2004 Performance Indicators

Licensee's General Comments: none

Unplanned Scrams per 7000 Critical Hrs



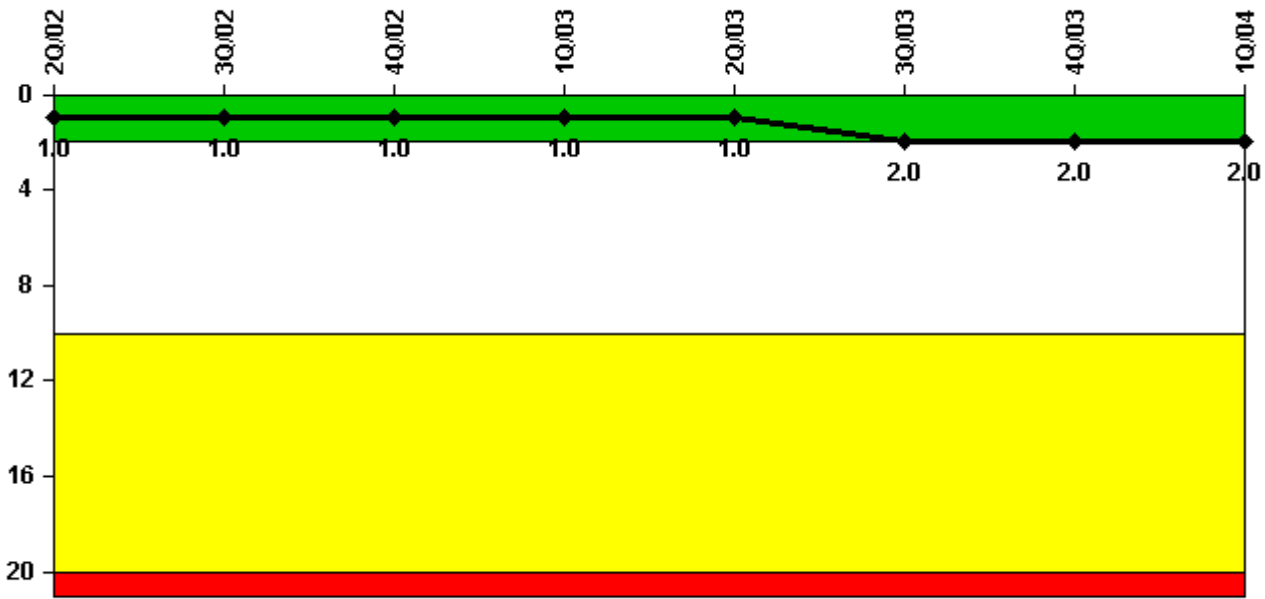
Thresholds: White > 3.0 Yellow > 6.0 Red > 25.0

Notes

Unplanned Scrams per 7000 Critical Hrs	2Q/02	3Q/02	4Q/02	1Q/03	2Q/03	3Q/03	4Q/03	1Q/04
Unplanned scrams	0	0	0	1.0	0	1.0	0	0
Critical hours	1819.8	2208.0	1948.4	1383.3	2183.0	2111.4	2209.0	2184.0
Indicator value	1.7	0	0	1.0	0.9	1.8	1.8	0.8

Licensee Comments: none

Scrams with Loss of Normal Heat Removal



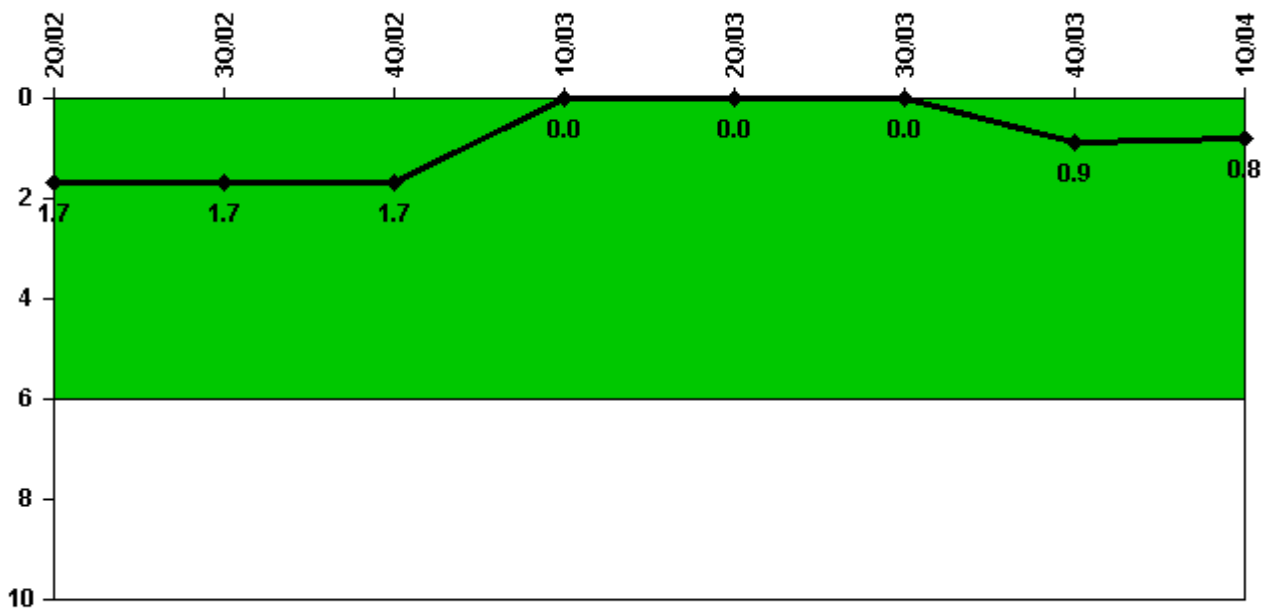
Thresholds: White > 2.0 Yellow > 10.0 Red > 20.0

Notes

Scrams with Loss of Normal Heat Removal	2Q/02	3Q/02	4Q/02	1Q/03	2Q/03	3Q/03	4Q/03	1Q/04
Scrams	0	0	0	0	0	1.0	0	0
Indicator value	1.0	1.0	1.0	1.0	1.0	2.0	2.0	2.0

Licensee Comments: none

Unplanned Power Changes per 7000 Critical Hrs



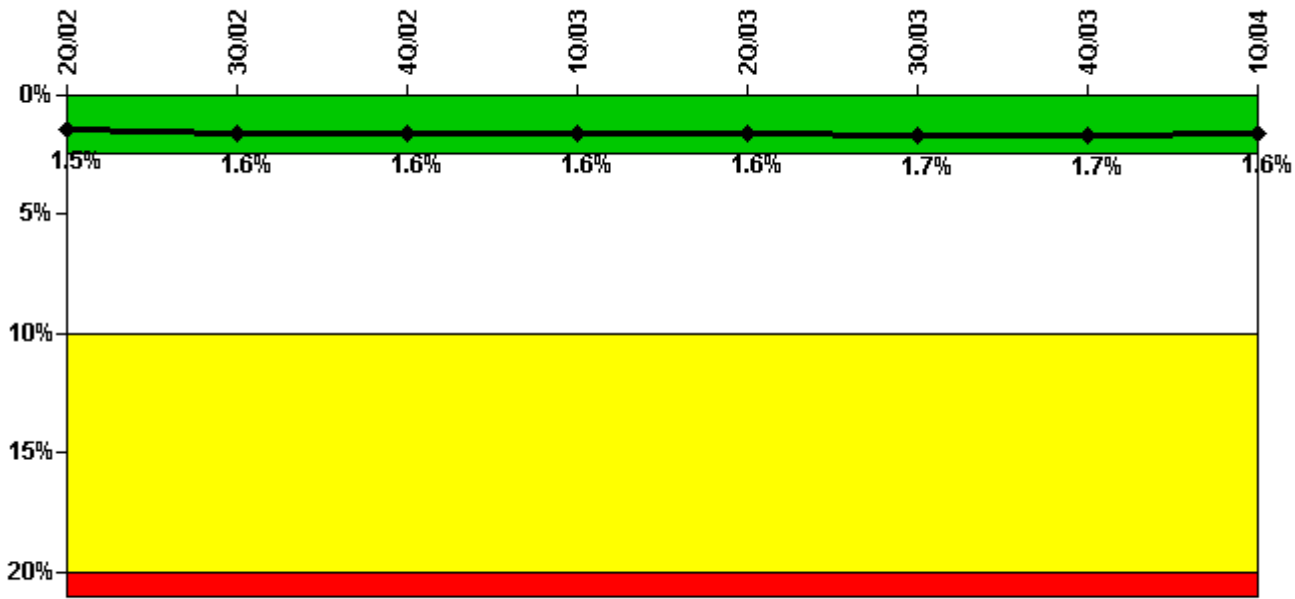
Thresholds: White > 6.0

Notes

Unplanned Power Changes per 7000 Critical Hrs	2Q/02	3Q/02	4Q/02	1Q/03	2Q/03	3Q/03	4Q/03	1Q/04
Unplanned power changes	0	0	0	0	0	0	1.0	0
Critical hours	1819.8	2208.0	1948.4	1383.3	2183.0	2111.4	2209.0	2184.0
Indicator value	1.7	1.7	1.7	0	0	0	0.9	0.8

Licensee Comments: none

Safety System Unavailability, Emergency AC Power, >2EDG



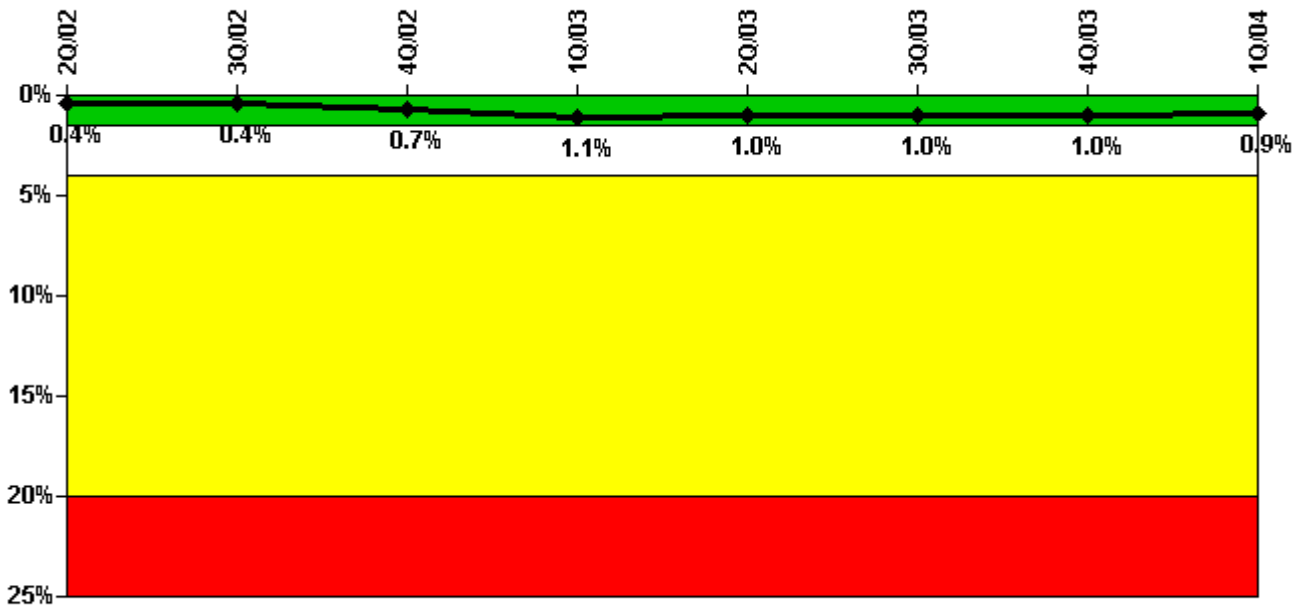
Thresholds: White > 2.5% Yellow > 10.0% Red > 20.0%

Notes

Safety System Unavailability, Emergency AC Power, >2EDG	2Q/02	3Q/02	4Q/02	1Q/03	2Q/03	3Q/03	4Q/03	1Q/04
Train 1								
Planned unavailable hours	6.95	82.40	1.13	20.10	21.60	43.63	7.52	1.25
Unplanned unavailable hours	0	28.00	0	0	51.15	0	0	0
Fault exposure hours	0	0	0	0	0	0	0	0
Effective Reset hours	0	0	0	0	0	0	0	0
Required hours	2183.00	2208.00	2209.00	2160.00	2183.00	2208.00	2209.00	2184.00
Train 2								
Planned unavailable hours	1.22	0.75	35.65	55.53	2.72	0.75	0.75	36.82
Unplanned unavailable hours	0	0	0	0	0	0	0	0
Fault exposure hours	0	0	0	0	0	0	0	0
Effective Reset hours	0	0	0	0	0	0	0	0
Required hours	2183.00	2208.00	2209.00	2160.00	2183.00	2208.00	2209.00	2184.00
Train 3								
Planned unavailable hours	75.65	8.93	47.16	80.47	0.75	0.75	2.12	0.75
Unplanned unavailable hours	6.27	0	0	0	0	0	0	0
Fault exposure hours	0	0	0	0	0	0	0	0
Effective Reset hours	0	0	0	0	0	0	0	0
Required hours	2183.00	2208.00	2209.00	2160.00	2183.00	2208.00	2209.00	2184.00
Indicator value	1.5%	1.6%	1.6%	1.6%	1.6%	1.7%	1.7%	1.6%

Licensee Comments: none

Safety System Unavailability, High Pressure Injection System (HPCS)



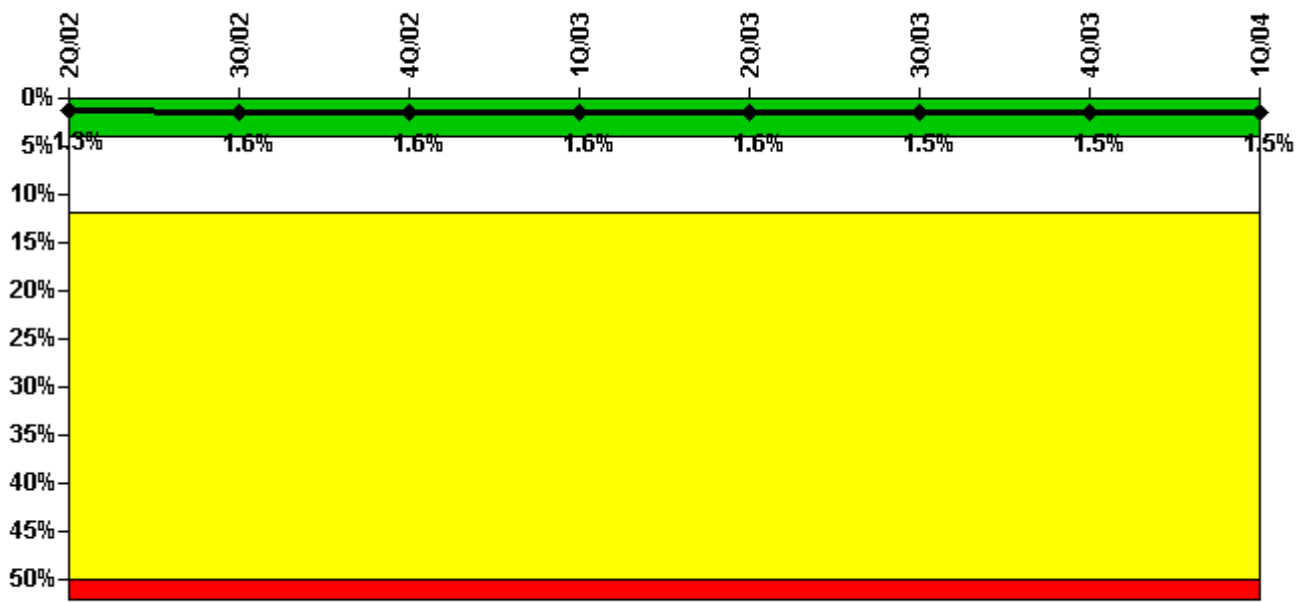
Thresholds: White > 1.5% Yellow > 4.0% Red > 20.0%

Notes

Safety System Unavailability, High Pressure Injection System (HPCS)	2Q/02	3Q/02	4Q/02	1Q/03	2Q/03	3Q/03	4Q/03	1Q/04
Train 1								
Planned unavailable hours	20.10	0	73.80	81.40	0	0	0	0
Unplanned unavailable hours	0	0	0	0	0	0	0	0
Fault exposure hours	0	0	0	0	0	0	0	0
Effective Reset hours	0	0	0	0	0	0	0	0
Required hours	1819.80	2208.00	1948.40	1383.30	2183.00	2111.40	2209.00	2184.00
Indicator value	0.4%	0.4%	0.7%	1.1%	1.0%	1.0%	1.0%	0.9%

Licensee Comments: none

Safety System Unavailability, Heat Removal System (RCIC)



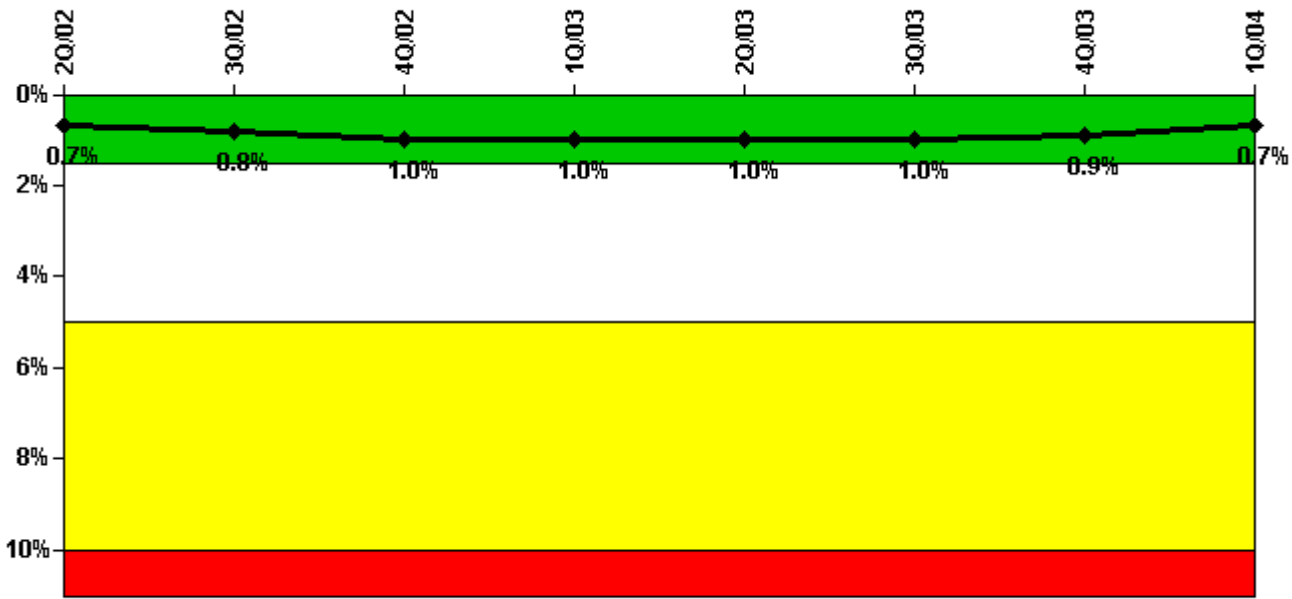
Thresholds: White > 4.0% Yellow > 12.0% Red > 50.0%

Notes

Safety System Unavailability, Heat Removal System (RCIC)	2Q/02	3Q/02	4Q/02	1Q/03	2Q/03	3Q/03	4Q/03	1Q/04
Train 1								
Planned unavailable hours	40.20	43.00	2.80	0.40	13.50	1.53	0	49.95
Unplanned unavailable hours	3.70	20.10	0.30	6.00	13.30	0	0	0
Fault exposure hours	0	0	0	0	0	0	0	0
Effective Reset hours	0	0	0	0	0	0	0	0
Required hours	1819.80	2208.00	1948.40	1383.30	2183.00	2111.40	2209.00	2184.00
Indicator value	1.3%	1.6%	1.6%	1.6%	1.6%	1.5%	1.5%	1.5%

Licensee Comments: none

Safety System Unavailability, Residual Heat Removal System



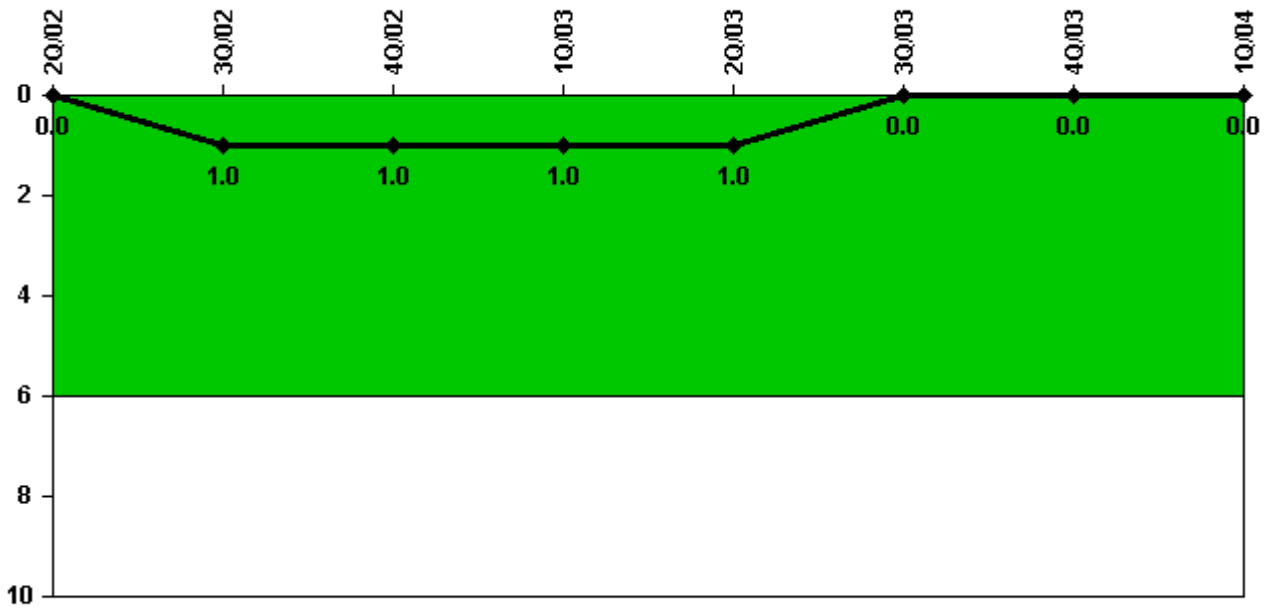
Thresholds: White > 1.5% Yellow > 5.0% Red > 10.0%

Notes

Safety System Unavailability, Residual Heat Removal System	2Q/02	3Q/02	4Q/02	1Q/03	2Q/03	3Q/03	4Q/03	1Q/04
Train 1								
Planned unavailable hours	23.90	56.10	31.10	22.80	0	25.70	0	0
Unplanned unavailable hours	0	20.10	0.30	0	0	0	0	0
Fault exposure hours	0	0	0	0	0	0	0	0
Effective Reset hours	0	0	0	0	0	0	0	0
Required hours	2183.00	2208.00	2209.00	2160.00	2183.00	2208.00	2209.00	2184.00
Train 2								
Planned unavailable hours	27.40	0	36.40	3.00	40.90	15.20	0	12.75
Unplanned unavailable hours	0	0.90	0.70	0	0	0	0	0
Fault exposure hours	0	0	0	0	0	0	0	0
Effective Reset hours	0	0	0	0	0	0	0	0
Required hours	2183.00	2208.00	2209.00	2160.00	2183.00	2208.00	2209.00	2184.00
Indicator value	0.7%	0.8%	1.0%	1.0%	1.0%	1.0%	0.9%	0.7%

Licensee Comments: none

Safety System Functional Failures (BWR)



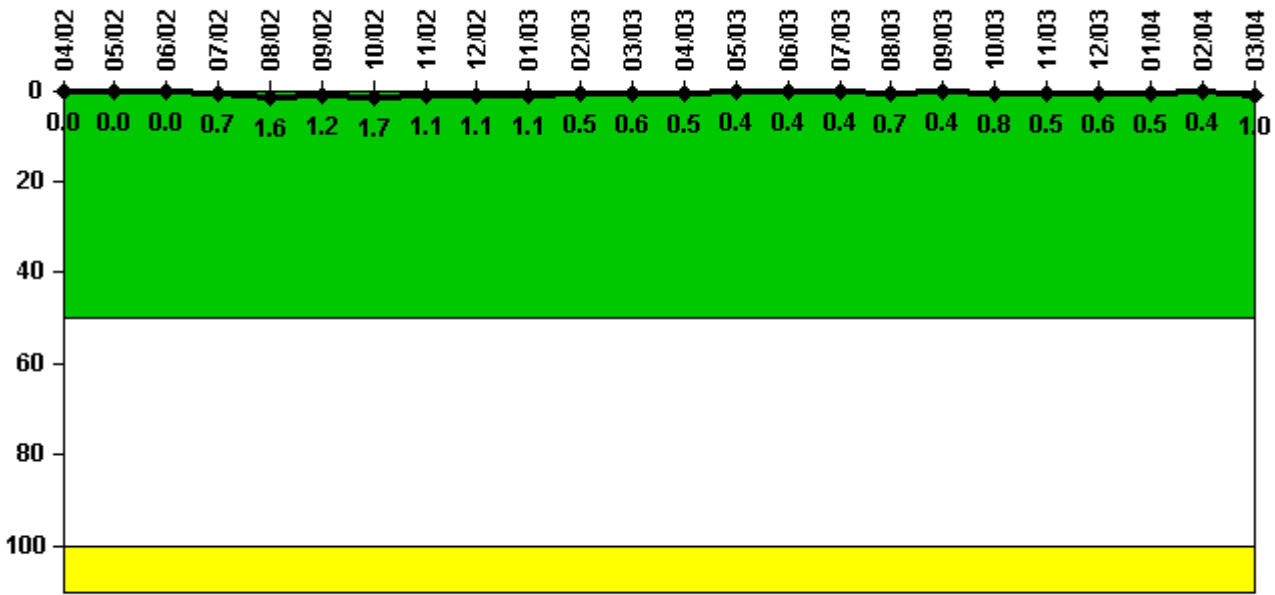
Thresholds: White > 6.0

Notes

Safety System Functional Failures (BWR)	2Q/02	3Q/02	4Q/02	1Q/03	2Q/03	3Q/03	4Q/03	1Q/04
Safety System Functional Failures	0	1	0	0	0	0	0	0
Indicator value	0	1	1	1	1	0	0	0

Licensee Comments: none

Reactor Coolant System Activity



Thresholds: White > 50.0 Yellow > 100.0

Notes

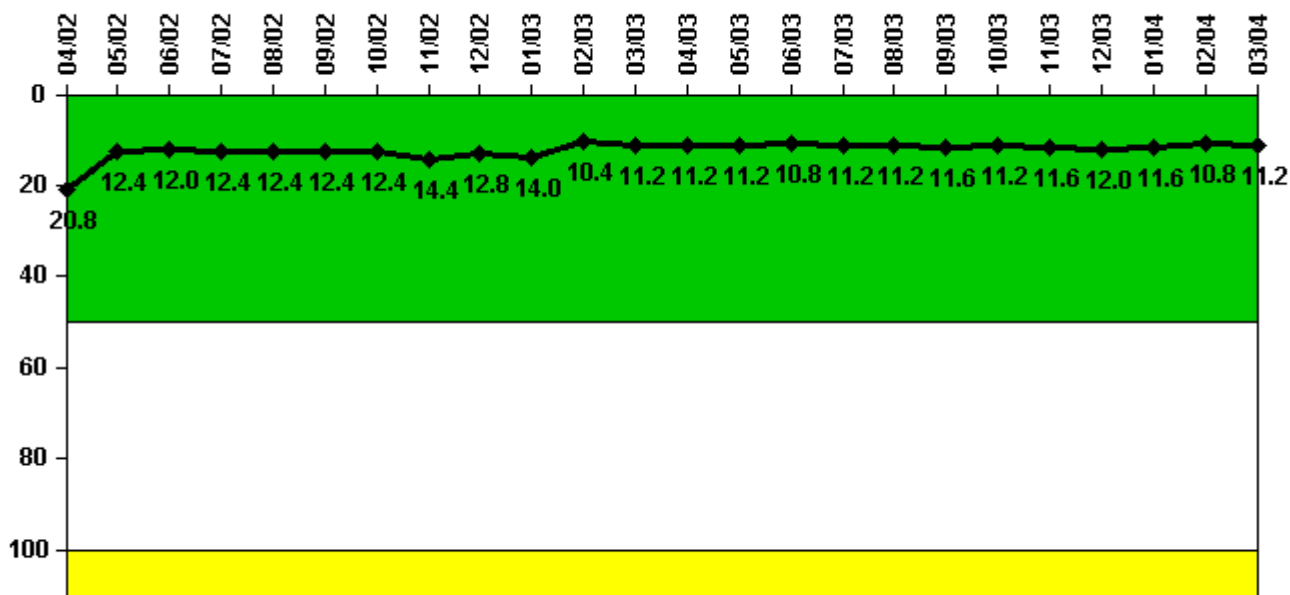
Reactor Coolant System Activity	4/02	5/02	6/02	7/02	8/02	9/02	10/02	11/02	12/02	1/03	2/03	3/03
Maximum activity	0.000020	0.000048	0.000039	0.001420	0.003120	0.002370	0.003450	0.002150	0.002120	0.002150	0.000989	0.001210
Technical specification limit	0.2	0.2	0.2	0.2	0.2	0.2	0.2	0.2	0.2	0.2	0.2	0.2
Indicator value	0	0	0	0.7	1.6	1.2	1.7	1.1	1.1	1.1	0.5	0.6

Reactor Coolant System Activity	4/03	5/03	6/03	7/03	8/03	9/03	10/03	11/03	12/03	1/04	2/04	3/04
Maximum activity	0.001000	0.000731	0.000839	0.000744	0.001460	0.000786	0.001570	0.001000	0.001140	0.000985	0.000877	0.001950
Technical specification limit	0.2	0.2	0.2	0.2	0.2	0.2	0.2	0.2	0.2	0.2	0.2	0.2
Indicator value	0.5	0.4	0.4	0.4	0.7	0.4	0.8	0.5	0.6	0.5	0.4	1.0

Licensee Comments:

9/03: The Unit 2 BI01 value submitted for August 2003 was changed from 0.000737 to 0.00146 uCi/gm. The Station incorrectly excluded the higher value because the sample had been taken following a trip of the Hydrogen Water Chemistry System. This issue has been entered into the Corrective Action Program.

Reactor Coolant System Leakage



Thresholds: White > 50.0 Yellow > 100.0

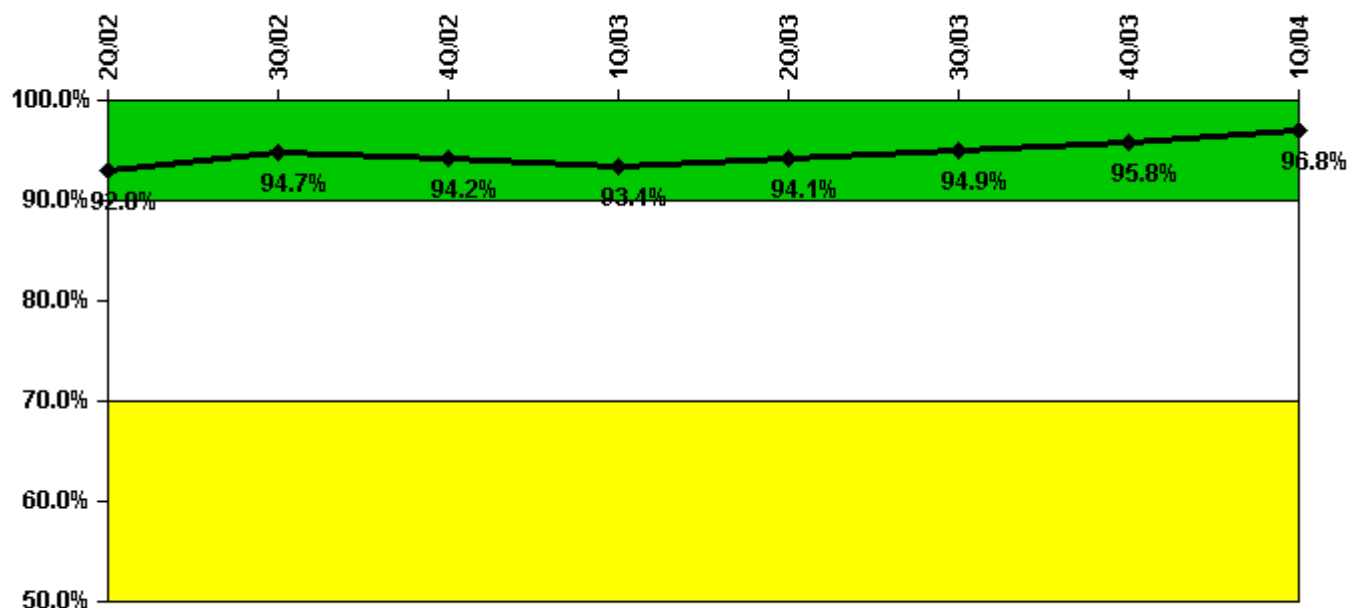
Notes

Reactor Coolant System Leakage	4/02	5/02	6/02	7/02	8/02	9/02	10/02	11/02	12/02	1/03	2/03	3/03
Maximum leakage	5.200	3.100	3.000	3.100	3.100	3.100	3.100	3.600	3.200	3.500	2.600	2.800
Technical specification limit	25.0	25.0	25.0	25.0	25.0	25.0	25.0	25.0	25.0	25.0	25.0	25.0
Indicator value	20.8	12.4	12.0	12.4	12.4	12.4	12.4	14.4	12.8	14.0	10.4	11.2

Reactor Coolant System Leakage	4/03	5/03	6/03	7/03	8/03	9/03	10/03	11/03	12/03	1/04	2/04	3/04
Maximum leakage	2.800	2.800	2.700	2.800	2.800	2.900	2.800	2.900	3.000	2.900	2.700	2.800
Technical specification limit	25.0	25.0	25.0	25.0	25.0	25.0	25.0	25.0	25.0	25.0	25.0	25.0
Indicator value	11.2	11.2	10.8	11.2	11.2	11.6	11.2	11.6	12.0	11.6	10.8	11.2

Licensee Comments: none

Drill/Exercise Performance



Thresholds: White < 90.0% Yellow < 70.0%

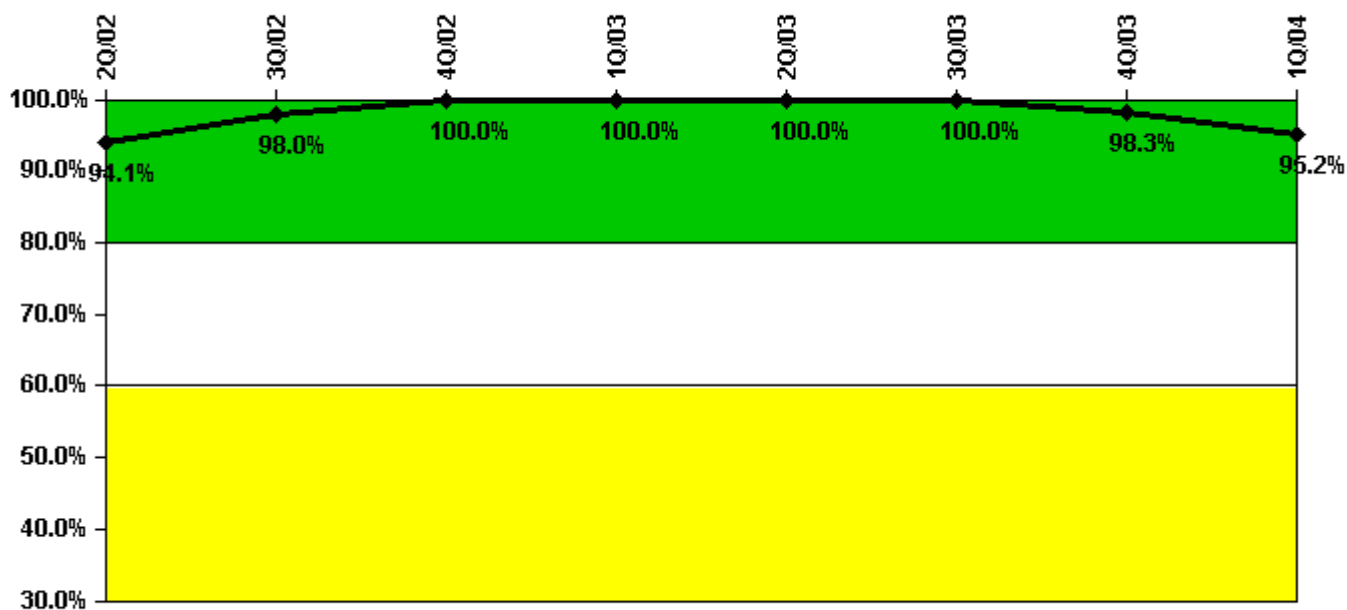
Notes

Drill/Exercise Performance	2Q/02	3Q/02	4Q/02	1Q/03	2Q/03	3Q/03	4Q/03	1Q/04
Successful opportunities	11.0	47.0	17.0	13.0	46.0	45.0	32.0	30.0
Total opportunities	12.0	48.0	18.0	14.0	47.0	48.0	32.0	30.0
Indicator value	92.8%	94.7%	94.2%	93.4%	94.1%	94.9%	95.8%	96.8%

Licensee Comments:

3Q/03: The July 2003 submittal for EP01 was changed from 20 successful opportunities out of 21 total opportunities to 21 of 22. An additional success was identified during a subsequent self-assessment. This issue has been entered into the Corrective Action Program.

ERO Drill Participation



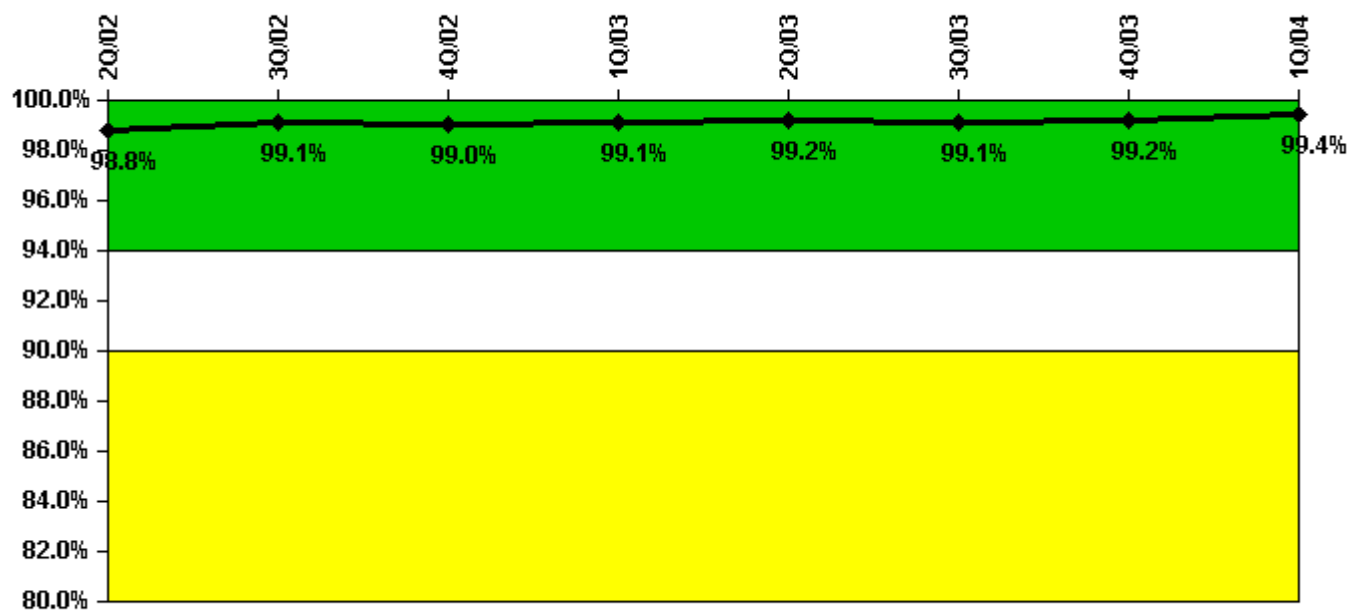
Thresholds: White < 80.0% Yellow < 60.0%

Notes

ERO Drill Participation	2Q/02	3Q/02	4Q/02	1Q/03	2Q/03	3Q/03	4Q/03	1Q/04
Participating Key personnel	48.0	50.0	51.0	54.0	53.0	56.0	57.0	59.0
Total Key personnel	51.0	51.0	51.0	54.0	53.0	56.0	58.0	62.0
Indicator value	94.1%	98.0%	100.0%	100.0%	100.0%	100.0%	98.3%	95.2%

Licensee Comments: none

Alert & Notification System



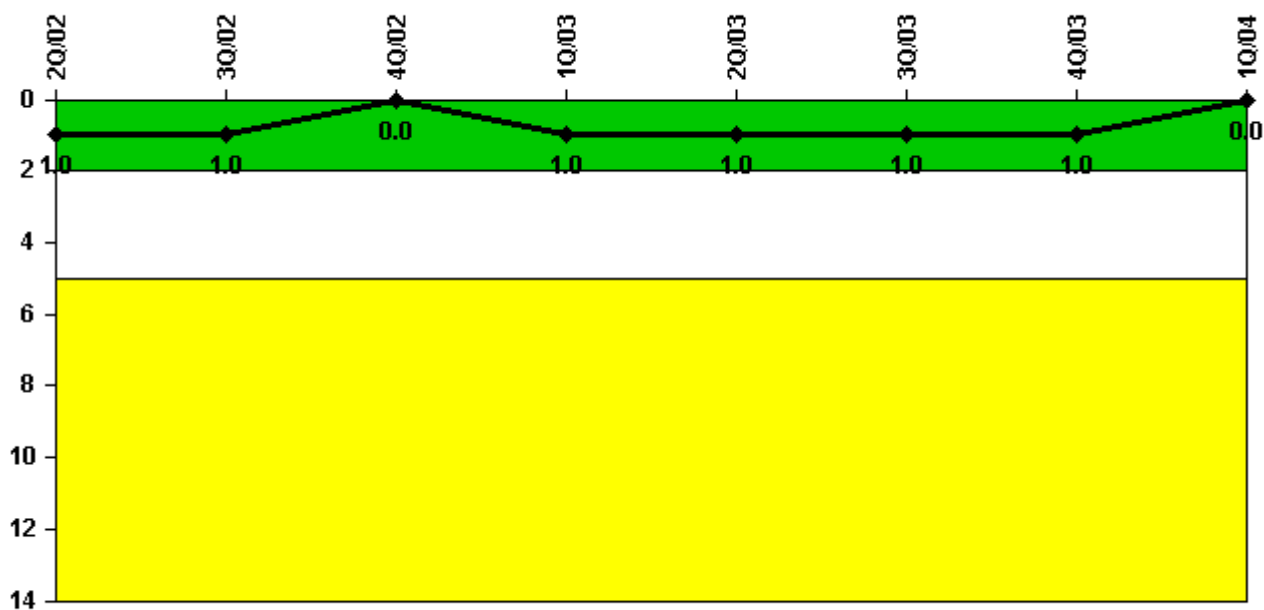
Thresholds: White < 94.0% Yellow < 90.0%

Notes

Alert & Notification System	2Q/02	3Q/02	4Q/02	1Q/03	2Q/03	3Q/03	4Q/03	1Q/04
Successful siren-tests	2150	2160	2489	3129	3173	3159	3192	3194
Total sirens-tests	2176	2176	2512	3150	3200	3200	3200	3200
Indicator value	98.8%	99.1%	99.0%	99.1%	99.2%	99.1%	99.2%	99.4%

Licensee Comments: none

Occupational Exposure Control Effectiveness



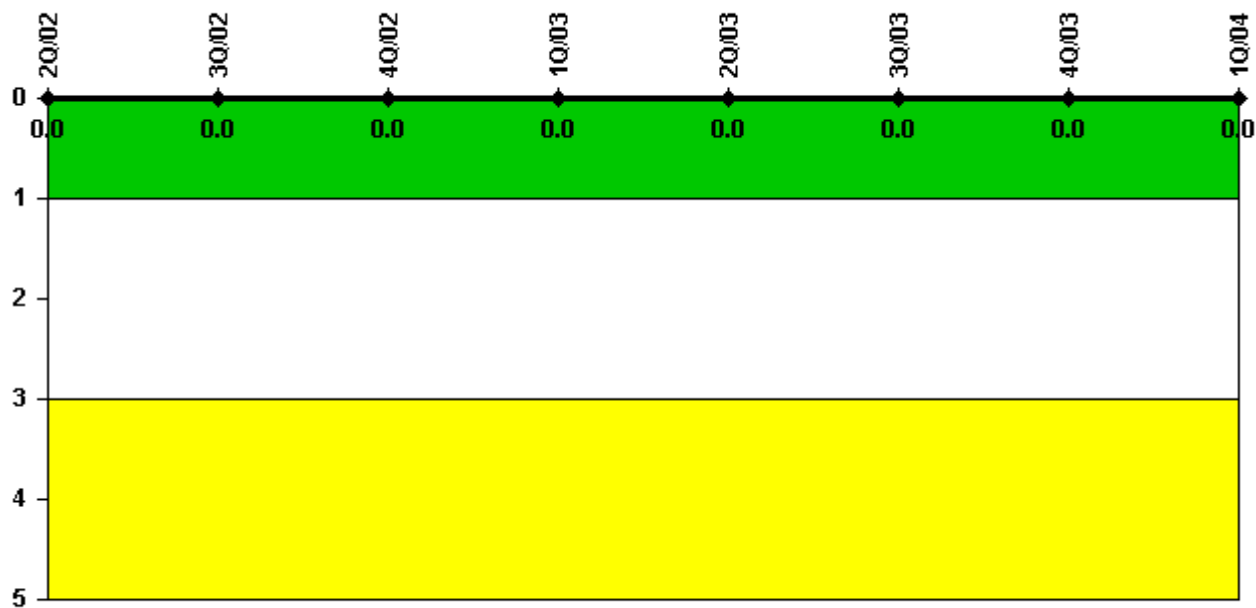
Thresholds: White > 2.0 Yellow > 5.0

Notes

Occupational Exposure Control Effectiveness	2Q/02	3Q/02	4Q/02	1Q/03	2Q/03	3Q/03	4Q/03	1Q/04
High radiation area occurrences	0	0	0	1	0	0	0	0
Very high radiation area occurrences	0	0	0	0	0	0	0	0
Unintended exposure occurrences	0	0	0	0	0	0	0	0
Indicator value	1	1	0	1	1	1	1	0

Licensee Comments: none

RETS/ODCM Radiological Effluent



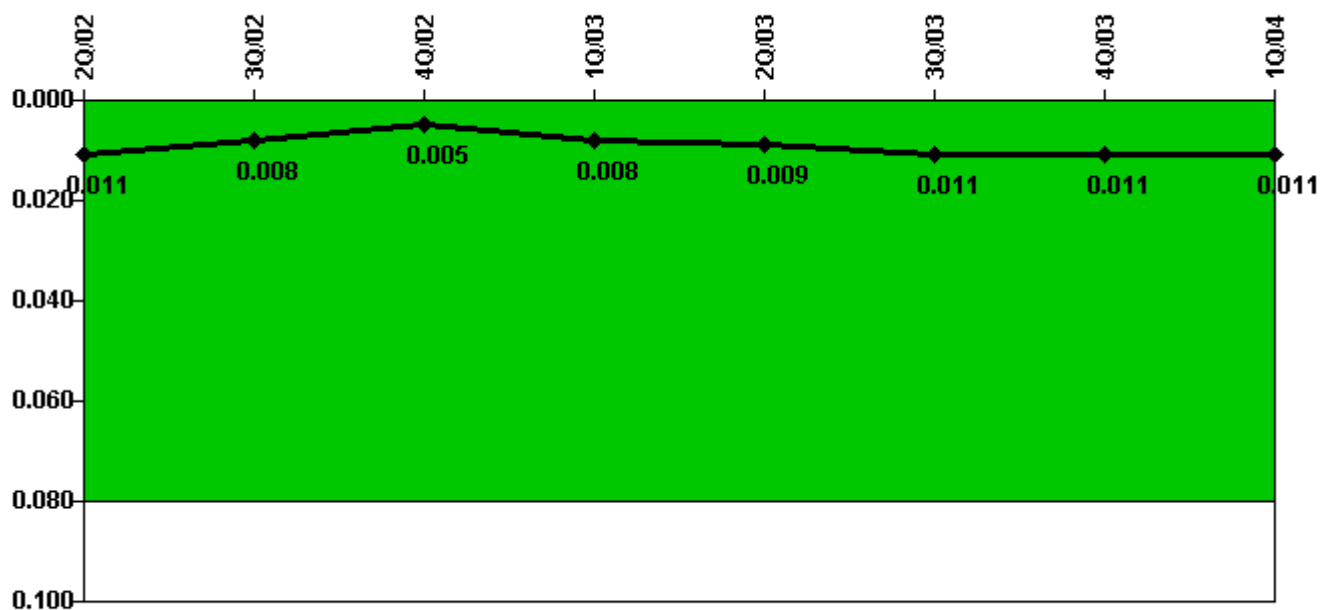
Thresholds: White > 1.0 Yellow > 3.0

Notes

RETS/ODCM Radiological Effluent	2Q/02	3Q/02	4Q/02	1Q/03	2Q/03	3Q/03	4Q/03	1Q/04
RETS/ODCM occurrences	0	0	0	0	0	0	0	0
Indicator value	0	0	0	0	0	0	0	0

Licensee Comments: none

Protected Area Security Performance Index



Thresholds: White > 0.080

Notes

Protected Area Security Performance Index	2Q/02	3Q/02	4Q/02	1Q/03	2Q/03	3Q/03	4Q/03	1Q/04
IDS compensatory hours	11.50	36.40	42.60	49.40	47.70	23.90	43.50	45.80
CCTV compensatory hours	4.7	2.8	0	8.5	4.7	48.9	0	3.2
IDS normalization factor	1.20	1.20	1.20	1.20	1.20	1.20	1.20	1.20
CCTV normalization factor	1.0	1.0	1.0	1.0	1.0	1.0	1.0	1.1
Index Value	0.011	0.008	0.005	0.008	0.009	0.011	0.011	0.011

Licensee Comments:

1Q/04: CCTVs were added during the 4th quarter 2003 to make the current total 33. The CCTV Normalization Factor increased to 1.1 beginning in the 1st quarter 2004.

Personnel Screening Program



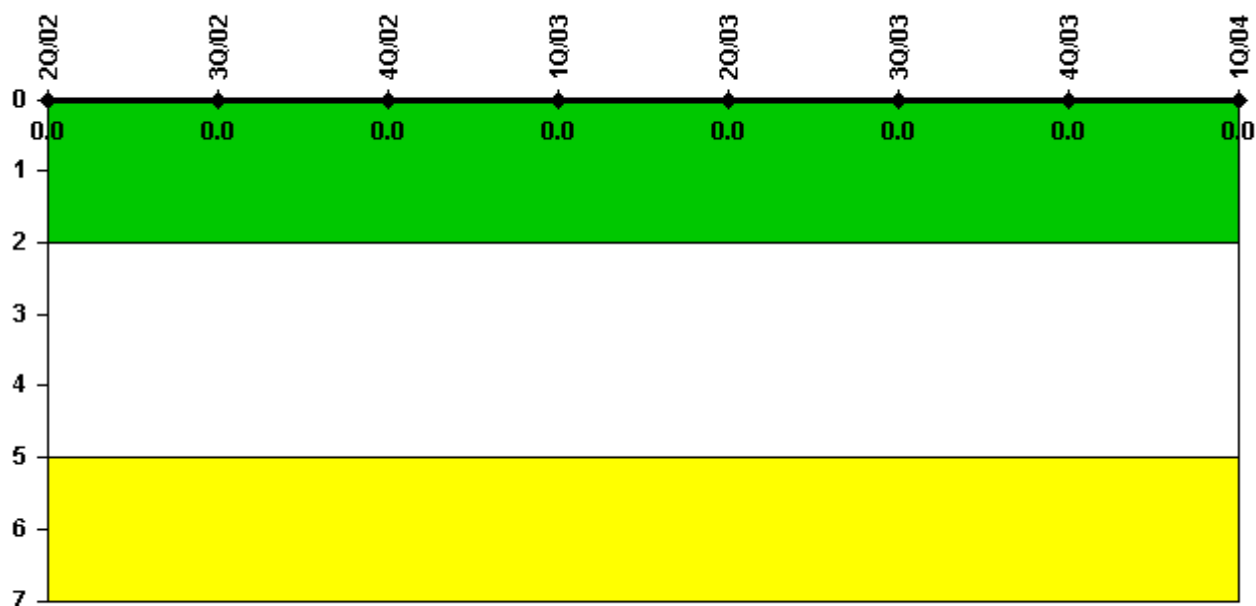
Thresholds: White > 2.0 Yellow > 5.0

Notes

Personnel Screening Program	2Q/02	3Q/02	4Q/02	1Q/03	2Q/03	3Q/03	4Q/03	1Q/04
Program failures	0	0	0	0	0	0	0	0
Indicator value	0	0	0	0	0	0	0	0

Licensee Comments: none

FFD/Personnel Reliability



Thresholds: White > 2.0 Yellow > 5.0

Notes

FFD/Personnel Reliability	2Q/02	3Q/02	4Q/02	1Q/03	2Q/03	3Q/03	4Q/03	1Q/04
Program Failures	0	0	0	0	0	0	0	0
Indicator value	0	0	0	0	0	0	0	0

Licensee Comments: none

▲ [PI Summary](#) | [Inspection Findings Summary](#) | [Reactor Oversight Process](#)

Last Modified: April 22, 2004