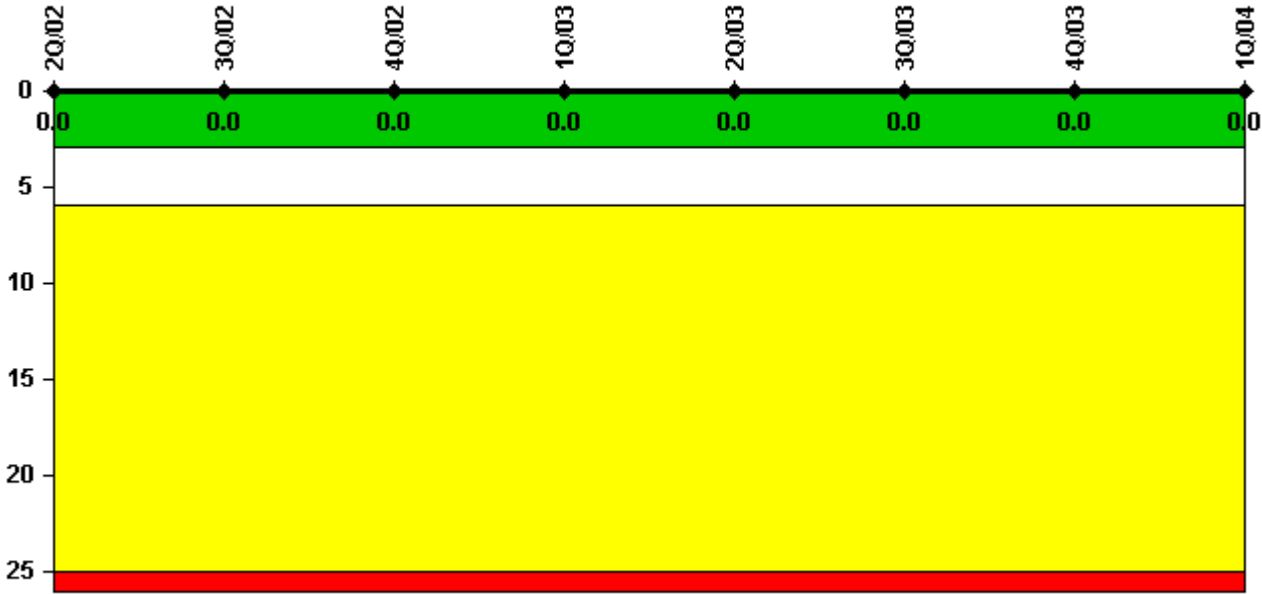


Kewaunee

1Q/2004 Performance Indicators

Licensee's General Comments: none

Unplanned Scrams per 7000 Critical Hrs



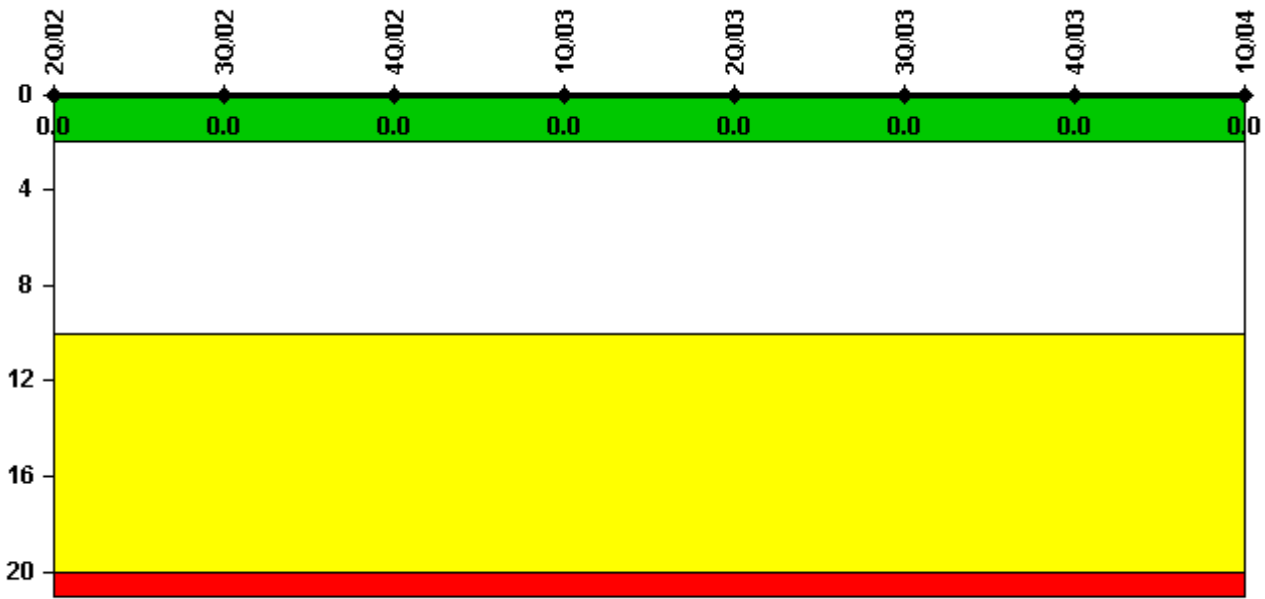
Thresholds: White > 3.0 Yellow > 6.0 Red > 25.0

Notes

Unplanned Scrams per 7000 Critical Hrs	2Q/02	3Q/02	4Q/02	1Q/03	2Q/03	3Q/03	4Q/03	1Q/04
Unplanned scrams	0	0	0	0	0	0	0	0
Critical hours	1951.8	2208.0	2209.0	2160.0	1348.2	2208.0	2209.0	1828.6
Indicator value	0	0	0	0	0	0	0	0

Licensee Comments: none

Scrams with Loss of Normal Heat Removal



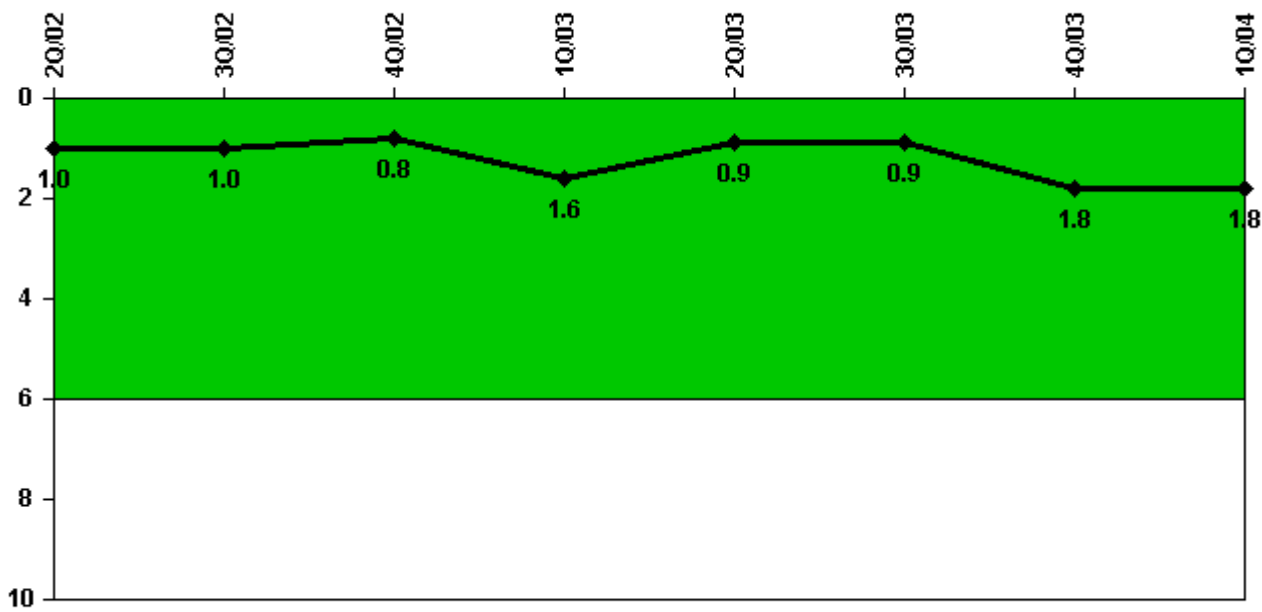
Thresholds: White > 2.0 Yellow > 10.0 Red > 20.0

Notes

Scrams with Loss of Normal Heat Removal	2Q/02	3Q/02	4Q/02	1Q/03	2Q/03	3Q/03	4Q/03	1Q/04
Scrams	0	0	0	0	0	0	0	0
Indicator value	0	0	0	0	0	0	0	0

Licensee Comments: none

Unplanned Power Changes per 7000 Critical Hrs



Thresholds: White > 6.0

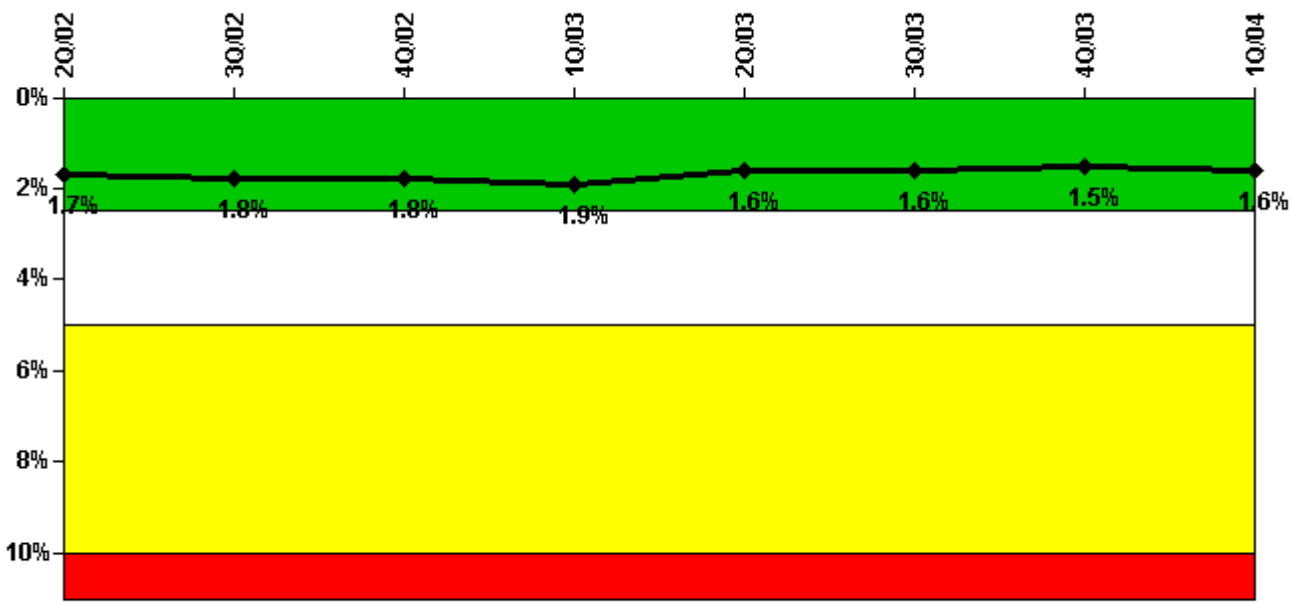
Notes

Unplanned Power Changes per 7000 Critical Hrs	2Q/02	3Q/02	4Q/02	1Q/03	2Q/03	3Q/03	4Q/03	1Q/04
Unplanned power changes	1.0	0	0	1.0	0	0	1.0	1.0
Critical hours	1951.8	2208.0	2209.0	2160.0	1348.2	2208.0	2209.0	1828.6
Indicator value	1.0	1.0	0.8	1.6	0.9	0.9	1.8	1.8

Licensee Comments:

1Q/04: During January 2004, Kewaunee shut down the reactor due to blockage being found in the Safety Injection Pump Lube Oil Coolers. T/2 fault exposure was 1089.55 hours for Train A and 1009.41 hours for Train B. An evaluation is in progress to determine if the Safety Injection Pumps were available during the fault exposure period.

Safety System Unavailability, Emergency AC Power



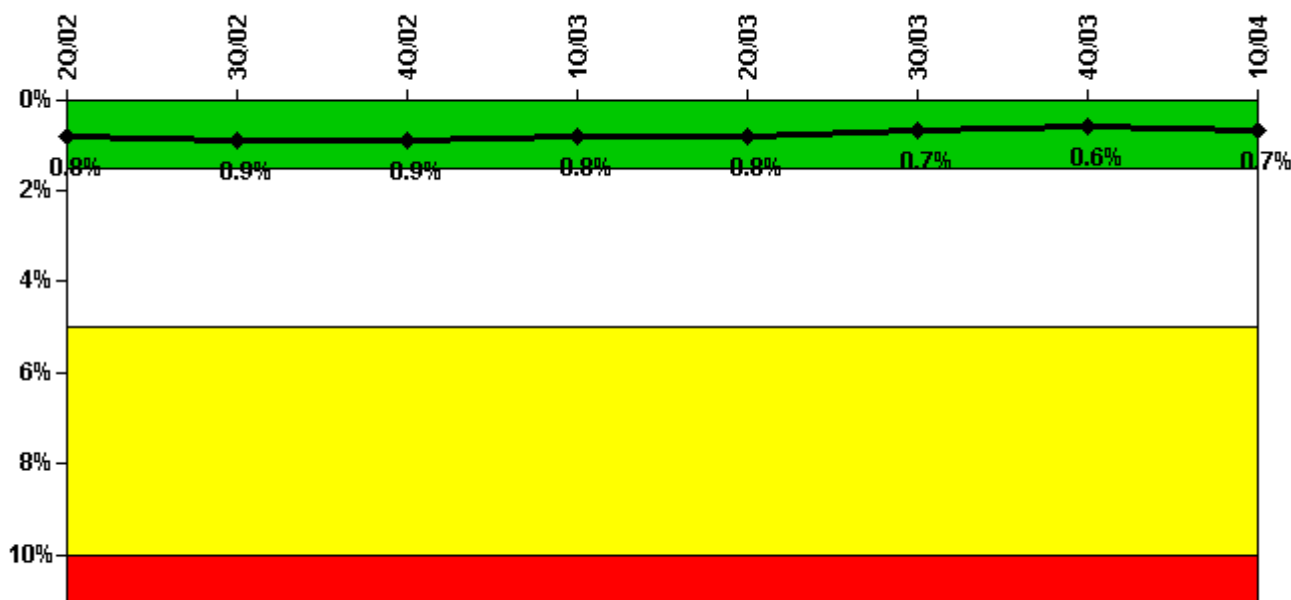
Thresholds: White > 2.5% Yellow > 5.0% Red > 10.0%

Notes

Safety System Unavailability, Emergency AC Power	2Q/02	3Q/02	4Q/02	1Q/03	2Q/03	3Q/03	4Q/03	1Q/04
Train 1								
Planned unavailable hours	35.69	21.83	33.89	56.25	40.13	25.63	43.46	31.36
Unplanned unavailable hours	4.67	0	4.80	0	0	0	2.33	0
Fault exposure hours	0	0	0	0	0	0	0	0
Effective Reset hours	0	0	0	0	0	0	0	0
Required hours	2183.00	2208.00	2209.00	2160.00	2183.00	2208.00	2209.00	2184.00
Train 2								
Planned unavailable hours	32.51	30.70	34.53	16.70	30.61	25.61	25.66	20.77
Unplanned unavailable hours	0	0	2.97	6.12	0	0	0	13.42
Fault exposure hours	0	0	0	22.75	0	0	0	0
Effective Reset hours	0	0	0	0	0	0	0	0
Required hours	2183.00	2208.00	2209.00	2160.00	2183.00	2208.00	2209.00	2184.00
Indicator value	1.7%	1.8%	1.8%	1.9%	1.6%	1.6%	1.5%	1.6%

Licensee Comments: none

Safety System Unavailability, High Pressure Injection System (HPSI)



Thresholds: White > 1.5% Yellow > 5.0% Red > 10.0%

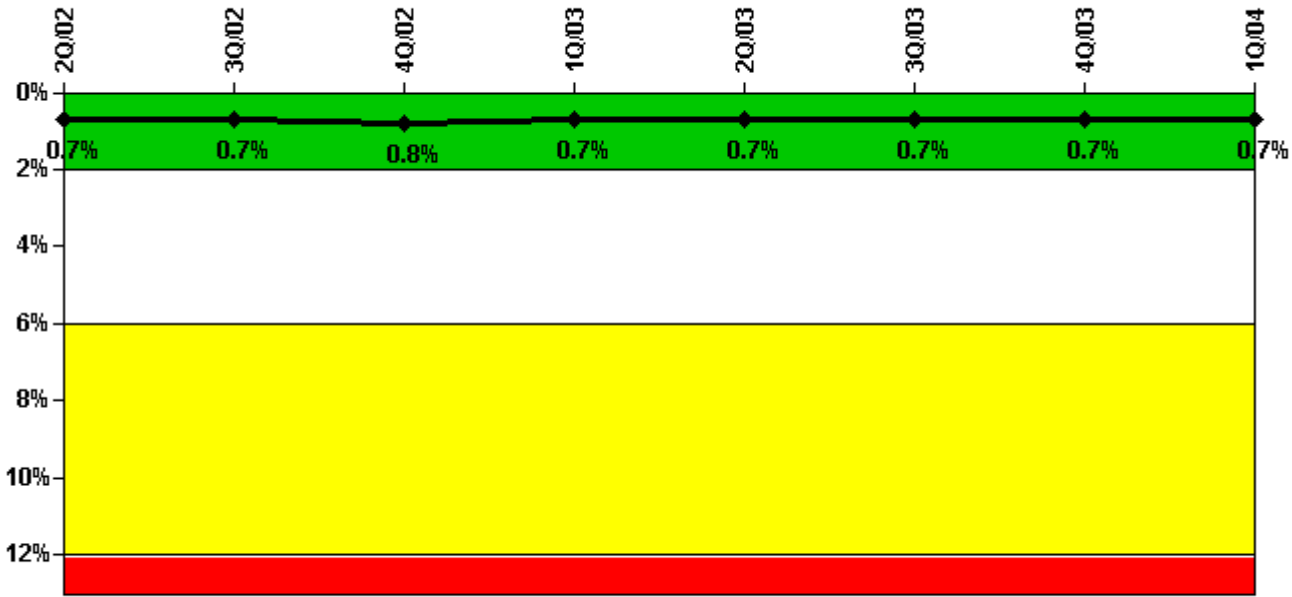
Notes

Safety System Unavailability, High Pressure Injection System (HPSI)	2Q/02	3Q/02	4Q/02	1Q/03	2Q/03	3Q/03	4Q/03	1Q/04
Train 1								
Planned unavailable hours	9.17	8.03	18.55	1.82	24.20	11.50	25.62	20.13
Unplanned unavailable hours	4.67	0	0	0	0	0	0	0
Fault exposure hours	0	0	0	0	0	0	0	0
Effective Reset hours	0	0	0	0	0	0	0	0
Required hours	1951.76	2208.00	2209.00	2160.00	1355.17	2208.00	2209.00	1820.38
Train 2								
Planned unavailable hours	10.68	14.77	19.46	5.66	21.61	9.48	13.33	9.82
Unplanned unavailable hours	0	0	0	0	0	0	0	9.75
Fault exposure hours	0	0	0	0	0	0	0	0
Effective Reset hours	0	0	0	0	0	0	0	0
Required hours	1951.76	2208.00	2209.00	2160.00	1355.17	2208.00	2209.00	1820.38
Indicator value	0.8%	0.9%	0.9%	0.8%	0.8%	0.7%	0.6%	0.7%

Licensee Comments:

1Q/04: During January 2004, Kewaunee shut down the reactor due to blockage being found in the Safety Injection Pump Lube Oil Coolers. T/2 fault exposure was 1089.55 hours for Train A and 1009.41 hours for Train B. An evaluation is in progress to determine if the Safety Injection Pumps were available during the fault exposure period.

Safety System Unavailability, Heat Removal System (AFW)



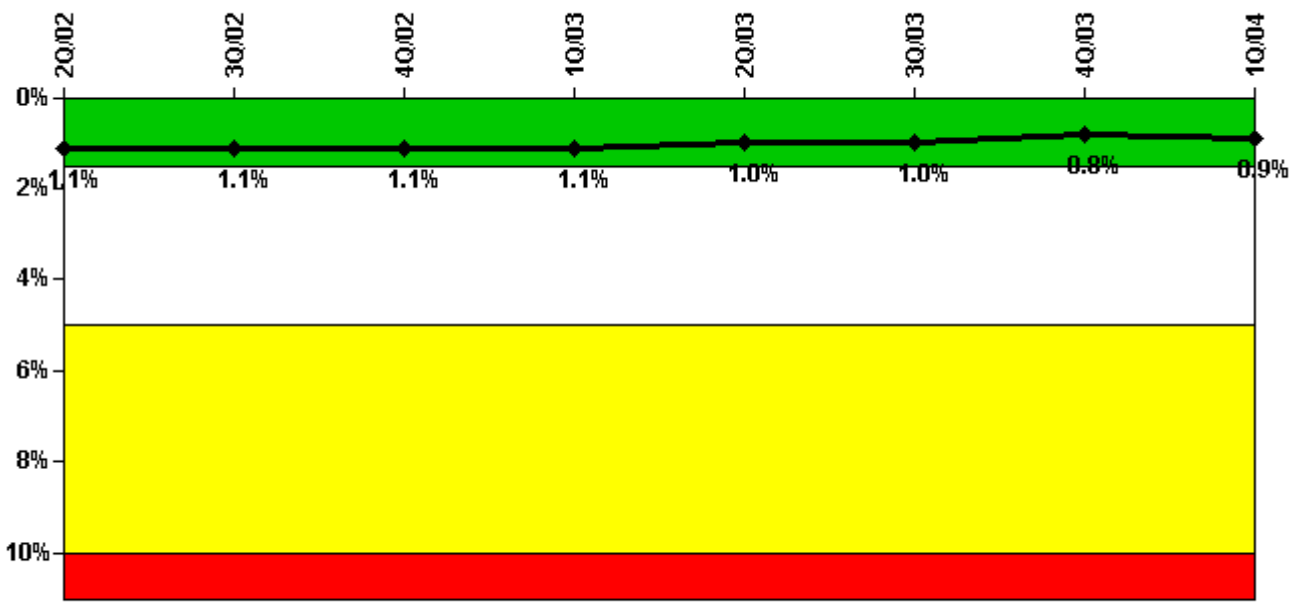
Thresholds: White > 2.0% Yellow > 6.0% Red > 12.0%

Notes

Safety System Unavailability, Heat Removal System (AFW)	2Q/02	3Q/02	4Q/02	1Q/03	2Q/03	3Q/03	4Q/03	1Q/04
Train 1								
Planned unavailable hours	26.25	3.10	26.91	2.79	17.55	7.44	22.85	21.00
Unplanned unavailable hours	4.67	0.79	0	0	0	0	0	0
Fault exposure hours	0	0	0	0	0	0	0	0
Effective Reset hours	0	0	0	0	0	0	0	0
Required hours	1967.27	2208.00	2209.00	2160.00	1365.17	2208.00	2209.00	1828.60
Train 2								
Planned unavailable hours	11.42	7.83	18.24	2.07	18.73	30.98	9.29	11.30
Unplanned unavailable hours	0	0.39	0	0	0	0	0	0
Fault exposure hours	0	0	0	0	0	0	0	0
Effective Reset hours	0	0	0	0	0	0	0	0
Required hours	1967.27	2208.00	2209.00	2160.00	1365.17	2208.00	2209.00	1828.60
Train 3								
Planned unavailable hours	4.68	4.18	17.50	15.60	30.21	3.77	23.90	9.77
Unplanned unavailable hours	0	1.75	17.20	0	0	0	0	0
Fault exposure hours	0	0	0	0	0	0	0	0
Effective Reset hours	0	0	0	0	0	0	0	0
Required hours	1967.27	2208.00	2209.00	2160.00	1365.17	2208.00	2209.00	1828.60
Indicator value	0.7%	0.7%	0.8%	0.7%	0.7%	0.7%	0.7%	0.7%

Licensee Comments: none

Safety System Unavailability, Residual Heat Removal System



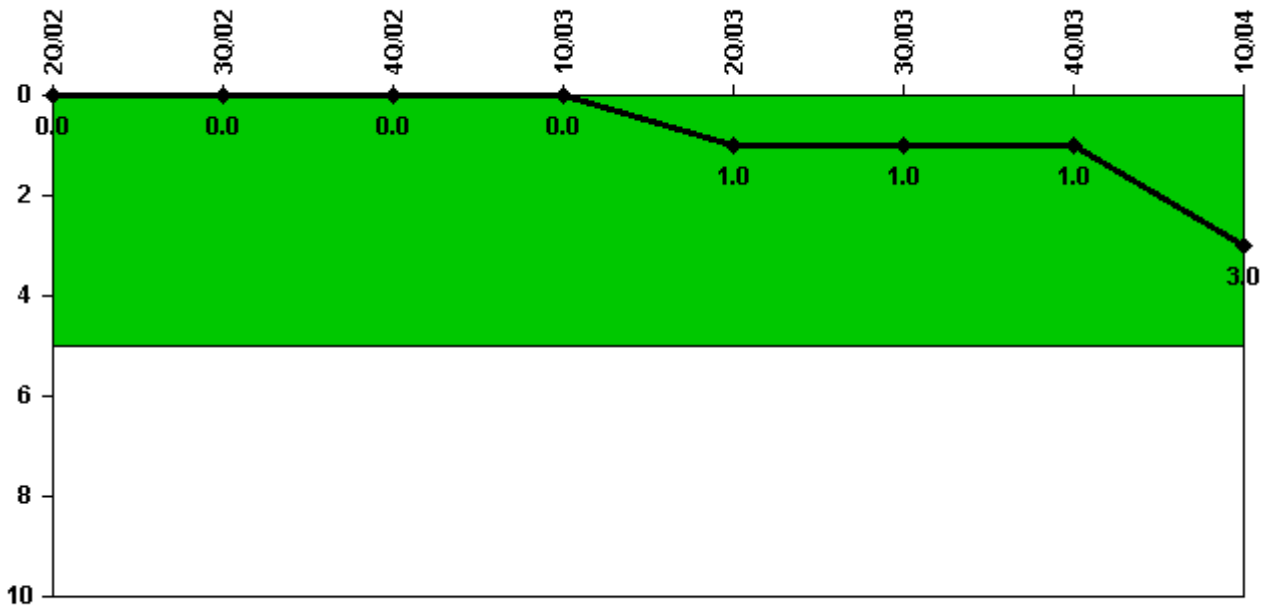
Thresholds: White > 1.5% Yellow > 5.0% Red > 10.0%

Notes

Safety System Unavailability, Residual Heat Removal System	2Q/02	3Q/02	4Q/02	1Q/03	2Q/03	3Q/03	4Q/03	1Q/04
Train 1								
Planned unavailable hours	14.67	9.98	24.05	9.67	59.34	6.78	24.93	19.00
Unplanned unavailable hours	71.93	0	0	0	0	0	0	0
Fault exposure hours	0	0	0	0	0	0	0	0
Effective Reset hours	0	0	0	0	0	0	0	0
Required hours	2183.00	2208.00	2209.00	2160.00	2183.00	2208.00	2209.00	2184.00
Train 2								
Planned unavailable hours	23.62	11.44	17.58	11.00	15.34	9.63	9.35	27.85
Unplanned unavailable hours	0	0	0	0	0	0	0	0
Fault exposure hours	0	0	0	0	0	0	0	0
Effective Reset hours	0	0	0	0	0	0	0	0
Required hours	2183.00	2208.00	2209.00	2160.00	2183.00	2208.00	2209.00	2184.00
Indicator value	1.1%	1.1%	1.1%	1.1%	1.0%	1.0%	0.8%	0.9%

Licensee Comments: none

Safety System Functional Failures (PWR)



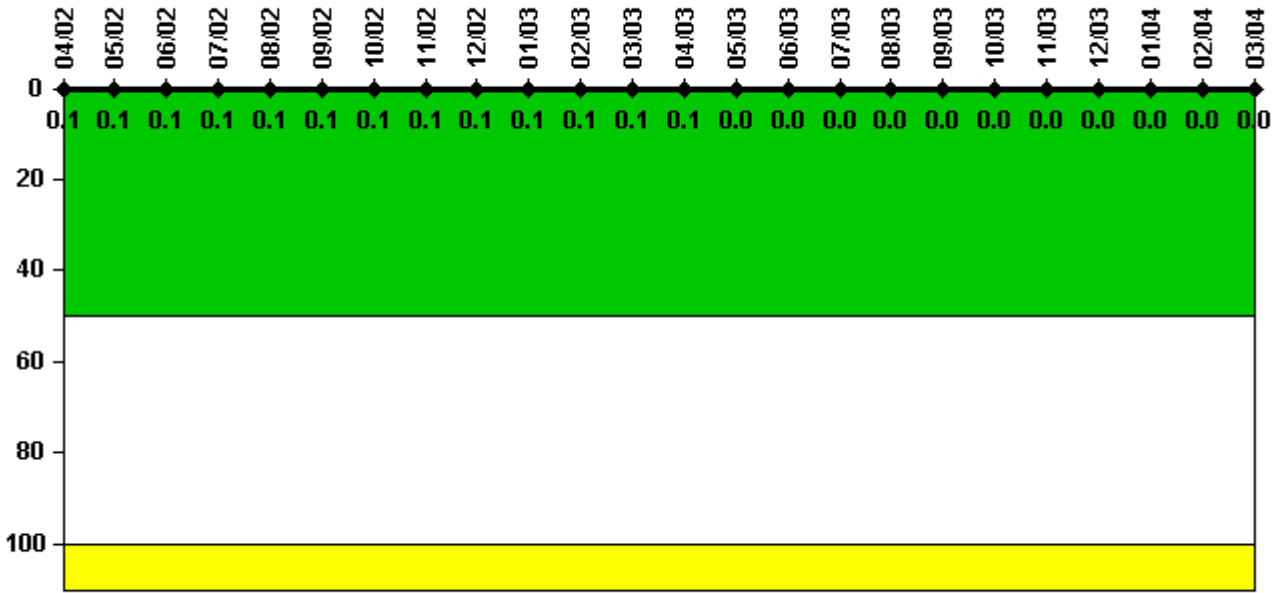
Thresholds: White > 5.0

Notes

Safety System Functional Failures (PWR)	2Q/02	3Q/02	4Q/02	1Q/03	2Q/03	3Q/03	4Q/03	1Q/04
Safety System Functional Failures	0	0	0	0	1	0	0	2
Indicator value	0	0	0	0	1	1	1	3

Licensee Comments: none

Reactor Coolant System Activity



Thresholds: White > 50.0 Yellow > 100.0

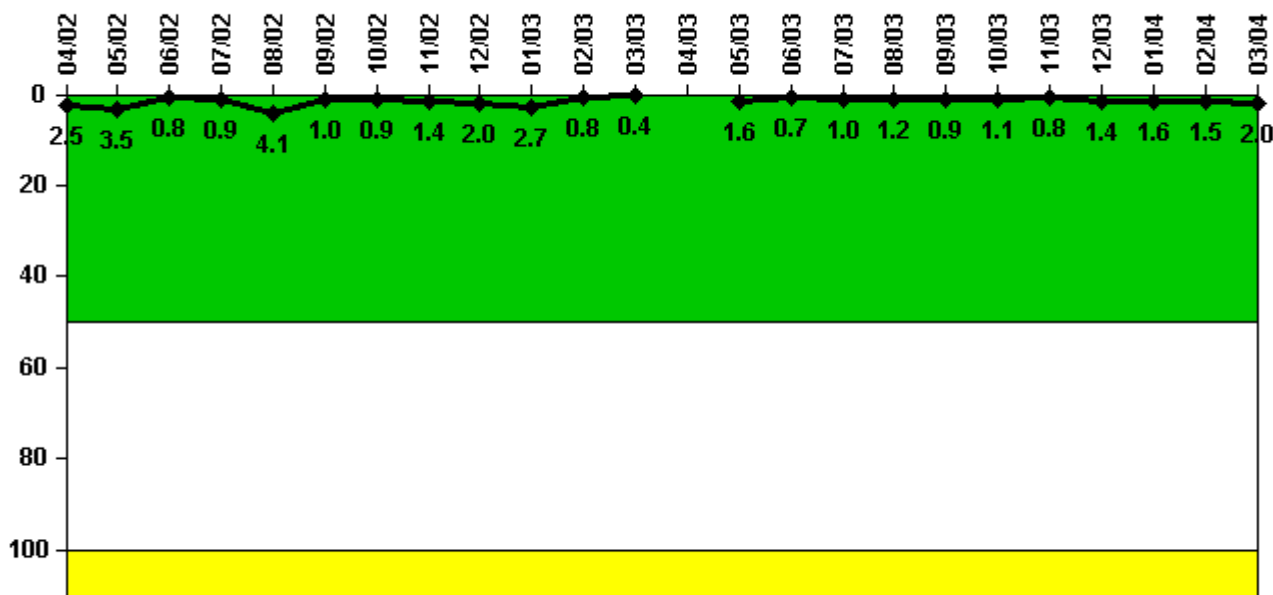
Notes

Reactor Coolant System Activity	4/02	5/02	6/02	7/02	8/02	9/02	10/02	11/02	12/02	1/03	2/03	3/03
Maximum activity	0.000247	0.000236	0.000248	0.000260	0.000272	0.000248	0.000258	0.000292	0.000288	0.000279	0.000293	0.000292
Technical specification limit	0.2	0.2	0.2	0.2	0.2	0.2	0.2	0.2	0.2	0.2	0.2	0.2
Indicator value	0.1	0.1	0.1	0.1	0.1	0.1	0.1	0.1	0.1	0.1	0.1	0.1

Reactor Coolant System Activity	4/03	5/03	6/03	7/03	8/03	9/03	10/03	11/03	12/03	1/04	2/04	3/04
Maximum activity	0.000282	0.000068	0.000079	0.000078	0.000082	0.000088	0.000089	0.000093	0.000097	0.000096	0.000110	0.000111
Technical specification limit	0.2	1.0	1.0	1.0	1.0	1.0	1.0	1.0	1.0	1.0	1.0	1.0
Indicator value	0.1	0	0	0	0	0	0	0	0	0	0	0

Licensee Comments: none

Reactor Coolant System Leakage



Thresholds: White > 50.0 Yellow > 100.0

Notes

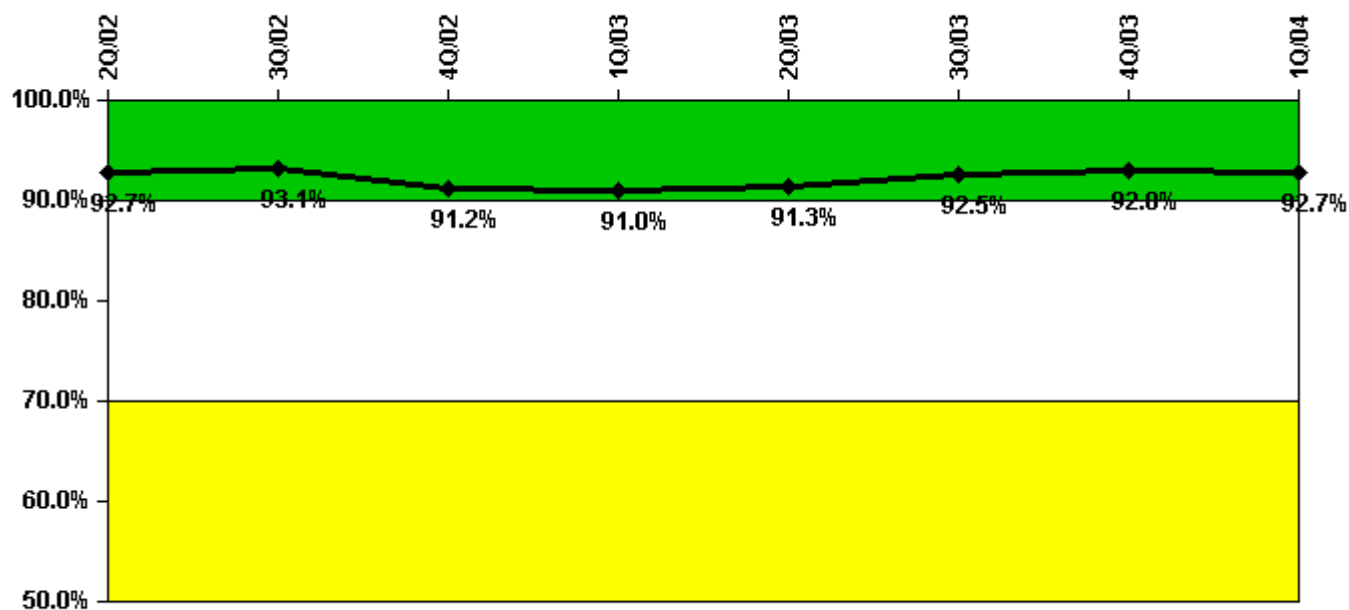
Reactor Coolant System Leakage	4/02	5/02	6/02	7/02	8/02	9/02	10/02	11/02	12/02	1/03	2/03	3/03
Maximum leakage	0.251	0.348	0.083	0.087	0.410	0.098	0.089	0.138	0.201	0.268	0.082	0.037
Technical specification limit	10.0	10.0	10.0	10.0	10.0	10.0	10.0	10.0	10.0	10.0	10.0	10.0
Indicator value	2.5	3.5	0.8	0.9	4.1	1.0	0.9	1.4	2.0	2.7	0.8	0.4

Reactor Coolant System Leakage	4/03	5/03	6/03	7/03	8/03	9/03	10/03	11/03	12/03	1/04	2/04	3/04
Maximum leakage	N/A	0.157	0.066	0.102	0.124	0.087	0.106	0.082	0.138	0.164	0.150	0.198
Technical specification limit	10.0	10.0	10.0	10.0	10.0	10.0	10.0	10.0	10.0	10.0	10.0	10.0
Indicator value	N/A	1.6	0.7	1.0	1.2	0.9	1.1	0.8	1.4	1.6	1.5	2.0

Licensee Comments:

3/03: Upon investigation of data, it was determined that the value for January 2003 was incorrect. Even with the new value, this indicator remains within the green threshold.

Drill/Exercise Performance



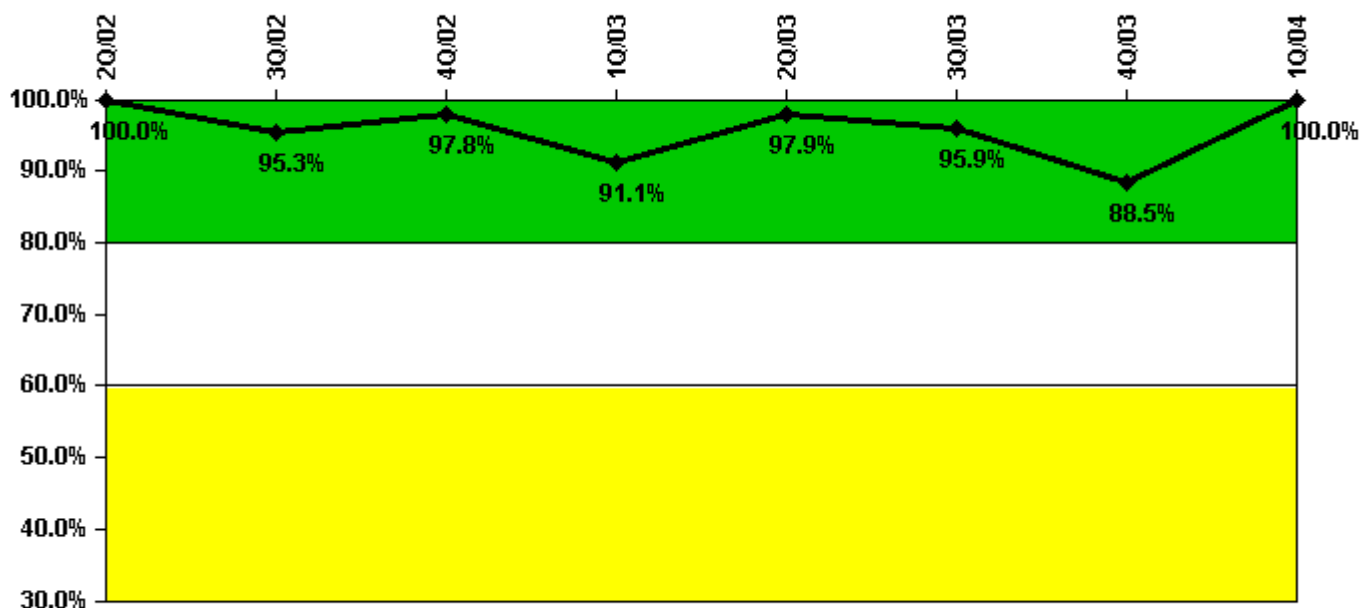
Thresholds: White < 90.0% Yellow < 70.0%

Notes

Drill/Exercise Performance	2Q/02	3Q/02	4Q/02	1Q/03	2Q/03	3Q/03	4Q/03	1Q/04
Successful opportunities	5.0	7.0	19.0	41.0	51.0	20.0	7.0	14.0
Total opportunities	6.0	7.0	23.0	44.0	52.0	22.0	7.0	16.0
Indicator value	92.7%	93.1%	91.2%	91.0%	91.3%	92.5%	92.8%	92.7%

Licensee Comments: none

ERO Drill Participation



Thresholds: White < 80.0% Yellow < 60.0%

Notes

ERO Drill Participation	2Q/02	3Q/02	4Q/02	1Q/03	2Q/03	3Q/03	4Q/03	1Q/04
Participating Key personnel	43.0	41.0	44.0	41.0	46.0	47.0	46.0	49.0
Total Key personnel	43.0	43.0	45.0	45.0	47.0	49.0	52.0	49.0
Indicator value	100.0%	95.3%	97.8%	91.1%	97.9%	95.9%	88.5%	100.0%

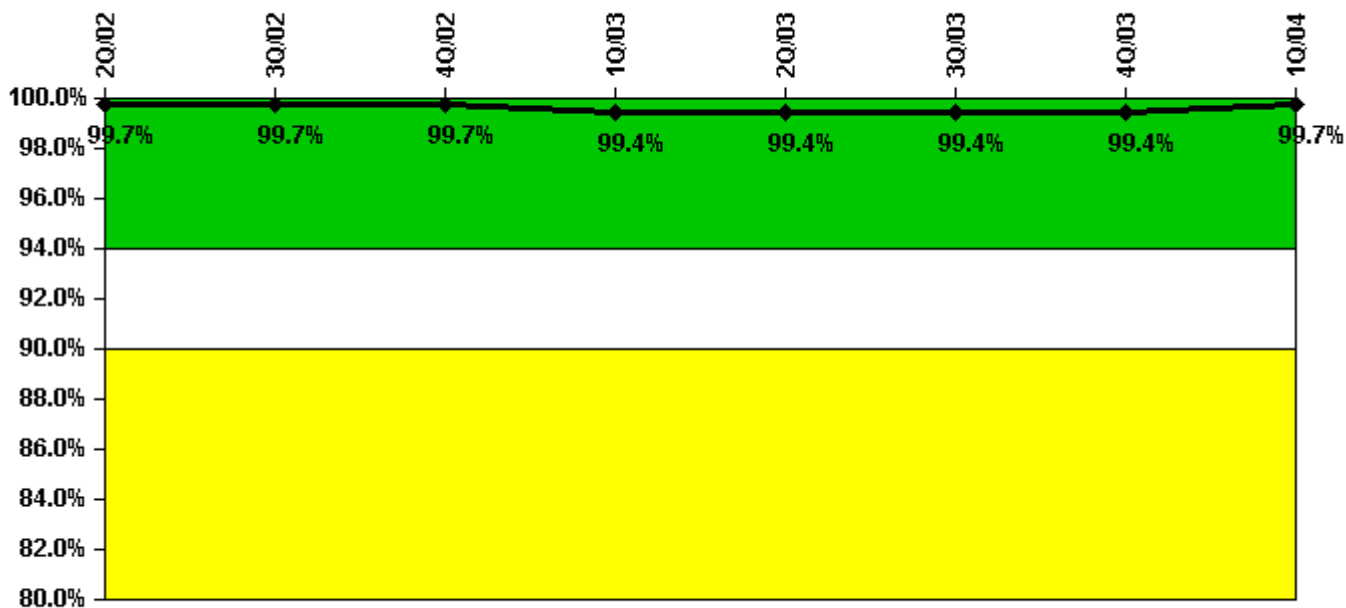
Licensee Comments:

4Q/03: One ERO member was given credit for participation during a drill where DEP was not observed or collected for PI data. Change 3rd month values from 47/52 to 46/52.

3Q/03: One ERO member was given credit for participation in a drill where DEP was not observed or collected. Changed 3rd month values from 48/49 to 47/49.

2Q/03: One ERO member given credit for participation in a drill where DEP was not observed. Changed 3rd month values from 47/47 to 46/47.

Alert & Notification System



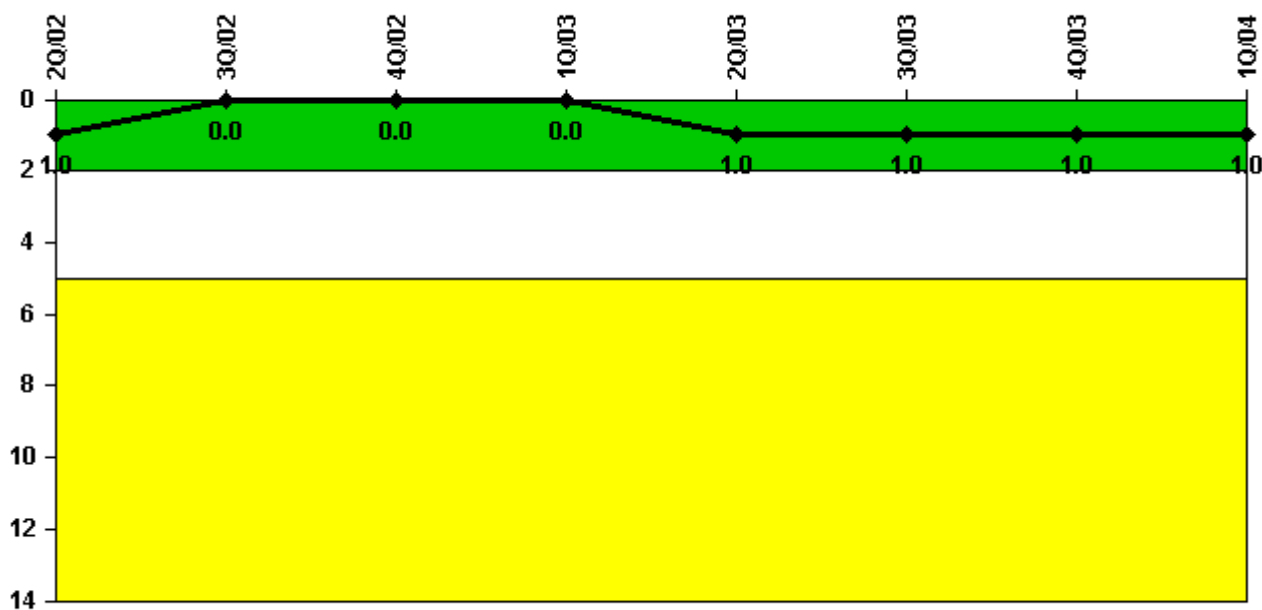
Thresholds: White < 94.0% Yellow < 90.0%

Notes

Alert & Notification System	2Q/02	3Q/02	4Q/02	1Q/03	2Q/03	3Q/03	4Q/03	1Q/04
Successful siren-tests	78	78	78	76	78	78	78	77
Total sirens-tests	78	78	78	78	78	78	78	78
Indicator value	99.7%	99.7%	99.7%	99.4%	99.4%	99.4%	99.4%	99.7%

Licensee Comments: none

Occupational Exposure Control Effectiveness



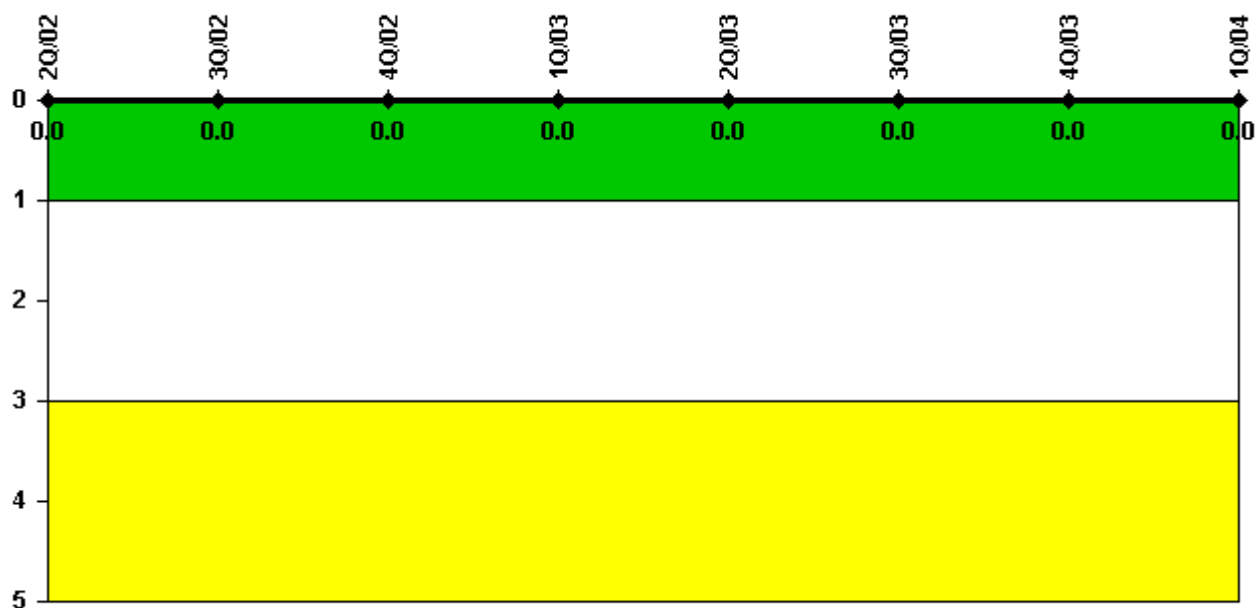
Thresholds: White > 2.0 Yellow > 5.0

Notes

Occupational Exposure Control Effectiveness	2Q/02	3Q/02	4Q/02	1Q/03	2Q/03	3Q/03	4Q/03	1Q/04
High radiation area occurrences	0	0	0	0	1	0	0	0
Very high radiation area occurrences	0	0	0	0	0	0	0	0
Unintended exposure occurrences	0	0	0	0	0	0	0	0
Indicator value	1	0	0	0	1	1	1	1

Licensee Comments: none

RETS/ODCM Radiological Effluent



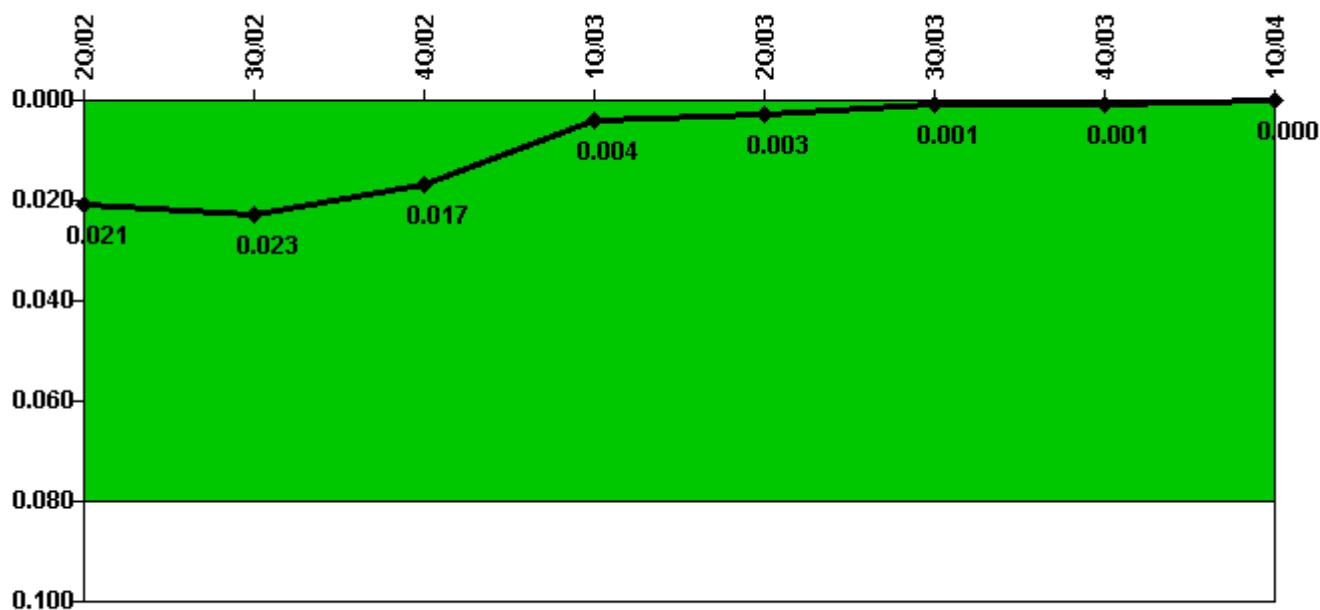
Thresholds: White > 1.0 Yellow > 3.0

Notes

RETS/ODCM Radiological Effluent	2Q/02	3Q/02	4Q/02	1Q/03	2Q/03	3Q/03	4Q/03	1Q/04
RETS/ODCM occurrences	0	0	0	0	0	0	0	0
Indicator value	0	0	0	0	0	0	0	0

Licensee Comments: none

Protected Area Security Performance Index



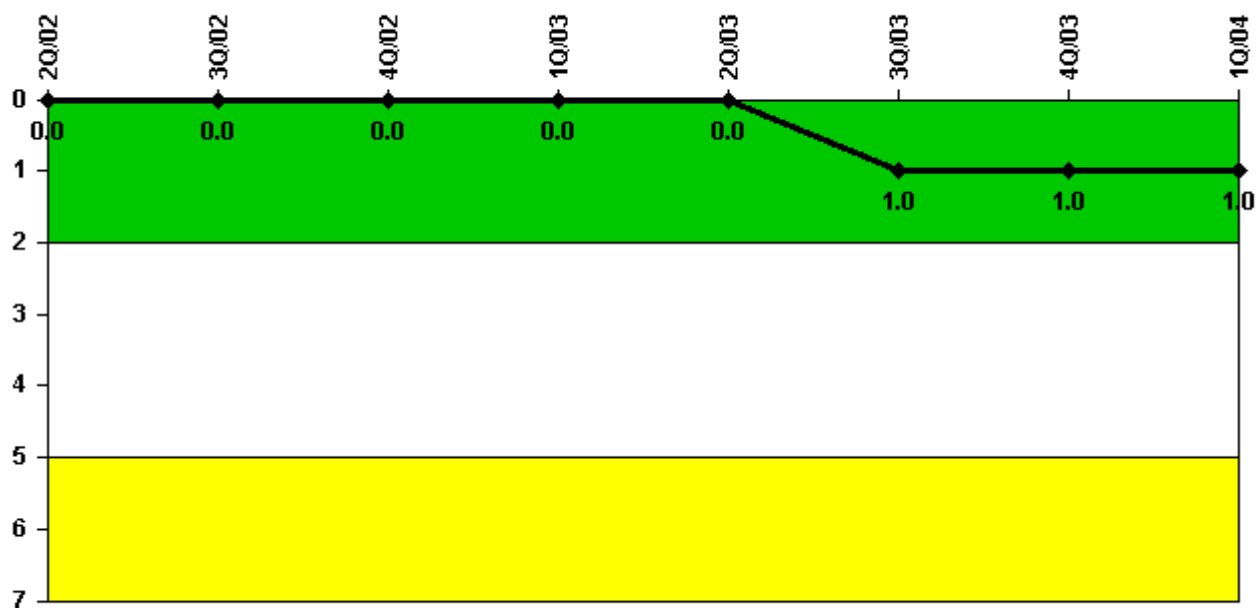
Thresholds: White > 0.080

Notes

Protected Area Security Performance Index	2Q/02	3Q/02	4Q/02	1Q/03	2Q/03	3Q/03	4Q/03	1Q/04
IDS compensatory hours	19.20	44.00	1.10	1.30	2.70	0	0.10	0
CCTV compensatory hours	0	0	2.7	5.7	0	0	2.7	0
IDS normalization factor	1.00	1.00	1.00	1.00	1.00	1.00	1.00	1.00
CCTV normalization factor	1.0	1.0	1.0	1.0	1.0	1.0	1.0	1.0
Index Value	0.021	0.023	0.017	0.004	0.003	0.001	0.001	0

Licensee Comments: none

Personnel Screening Program



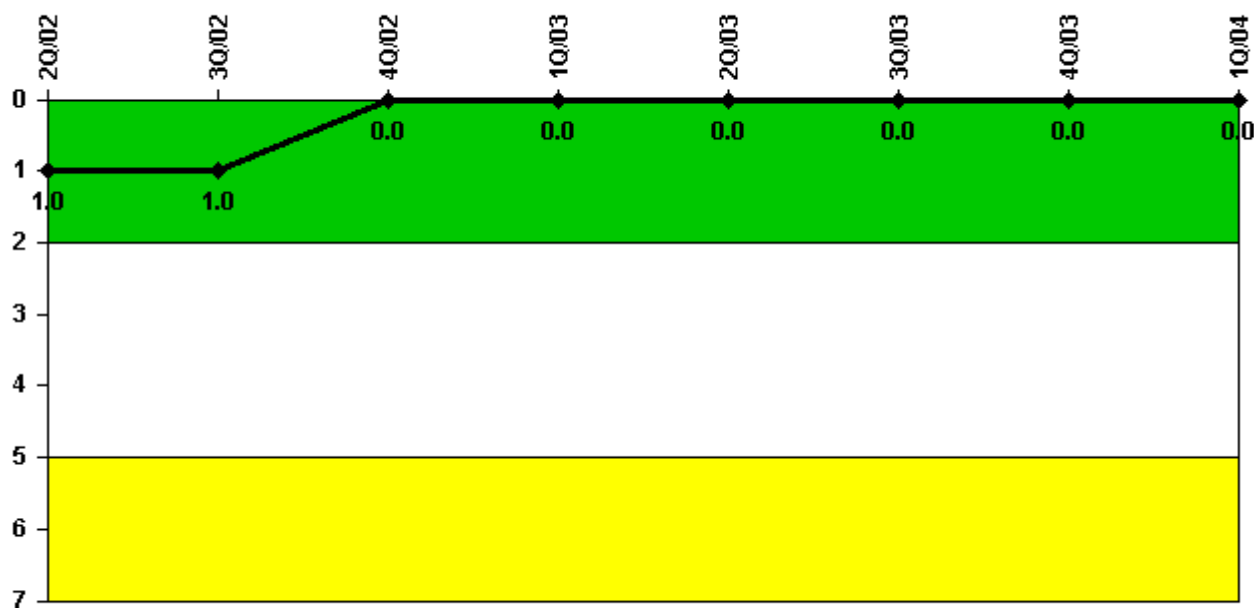
Thresholds: White > 2.0 Yellow > 5.0

Notes

Personnel Screening Program	2Q/02	3Q/02	4Q/02	1Q/03	2Q/03	3Q/03	4Q/03	1Q/04
Program failures	0	0	0	0	0	1	0	0
Indicator value	0	0	0	0	0	1	1	1

Licensee Comments: none

FFD/Personnel Reliability



Thresholds: White > 2.0 Yellow > 5.0

Notes

FFD/Personnel Reliability	2Q/02	3Q/02	4Q/02	1Q/03	2Q/03	3Q/03	4Q/03	1Q/04
Program Failures	0	0	0	0	0	0	0	0
Indicator value	1	1	0	0	0	0	0	0

Licensee Comments:

4Q/01: It was confirmed on December 30, 2003, that a FFD event had occurred in the 3rd Qtr 2001. This is being added for recordkeeping purposes only, as it does not affect the current value of the performance indicator. Reference NOV EA-03-105

▲ [PI Summary](#) | [Inspection Findings Summary](#) | [Reactor Oversight Process](#)

Last Modified: April 22, 2004