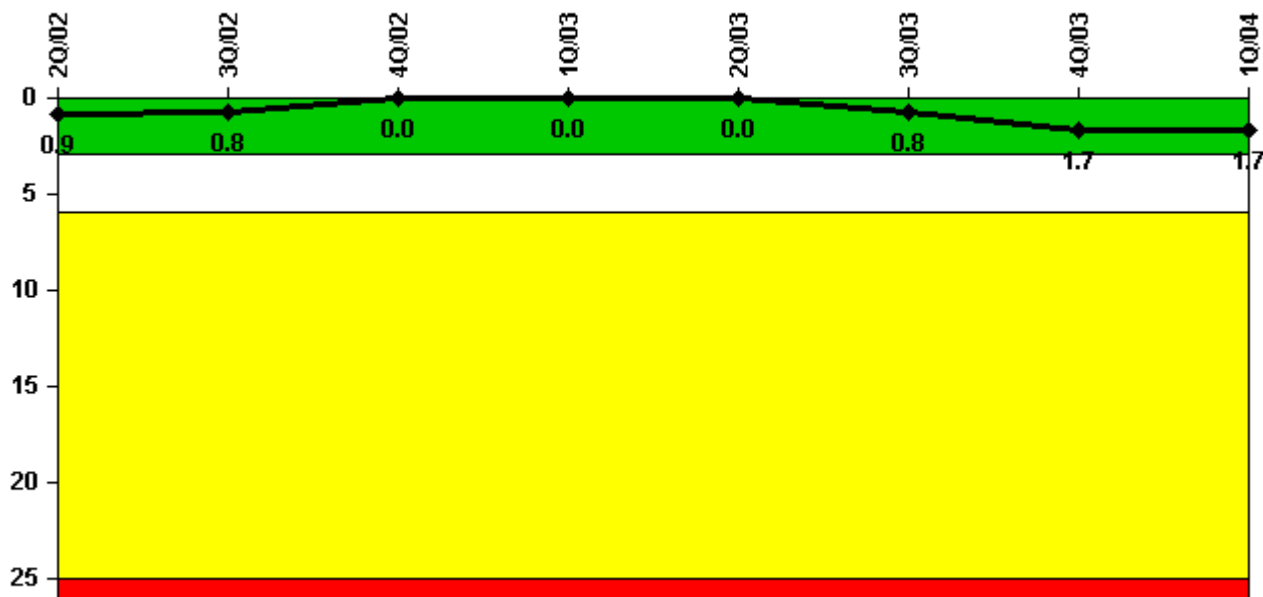


## Dresden 2

### 1Q/2004 Performance Indicators

Licensee's General Comments: none

#### Unplanned Scrams per 7000 Critical Hrs



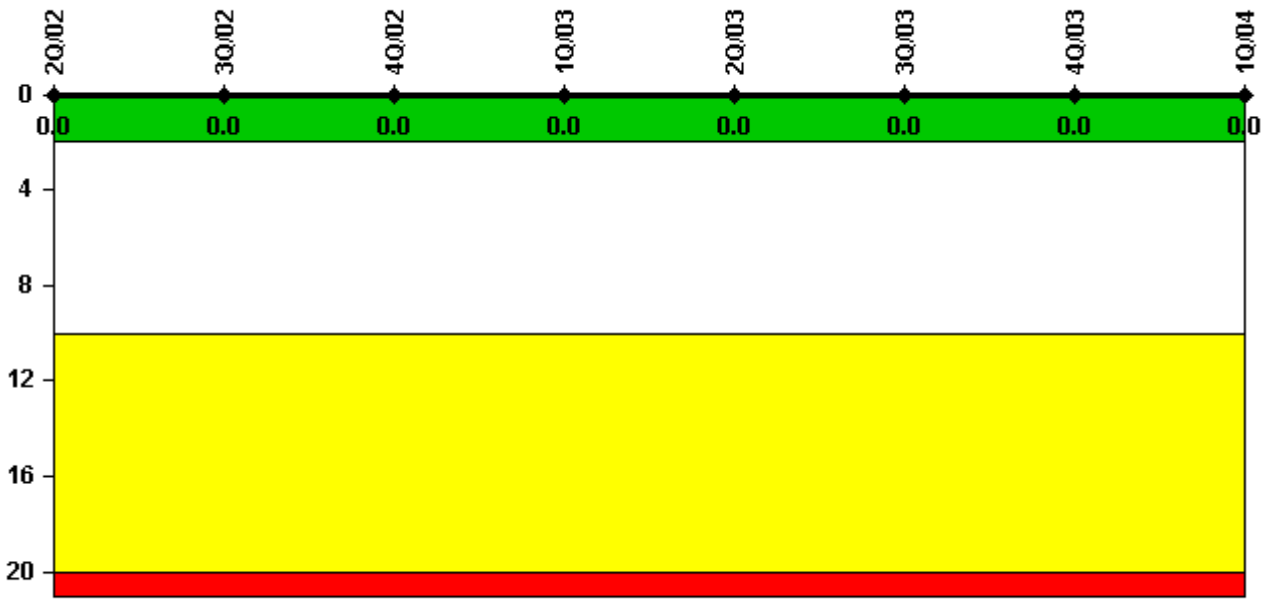
**Thresholds: White > 3.0 Yellow > 6.0 Red > 25.0**

#### Notes

Unplanned Scrams per 7000 Critical Hrs	2Q/02	3Q/02	4Q/02	1Q/03	2Q/03	3Q/03	4Q/03	1Q/04
Unplanned scrams	0	0	0	0	0	1.0	1.0	0
Critical hours	2183.0	2208.0	2209.0	2160.0	2183.0	2204.2	1528.9	2184.0
<b>Indicator value</b>	<b>0.9</b>	<b>0.8</b>	<b>0</b>	<b>0</b>	<b>0</b>	<b>0.8</b>	<b>1.7</b>	<b>1.7</b>

Licensee Comments: none

### Scrams with Loss of Normal Heat Removal



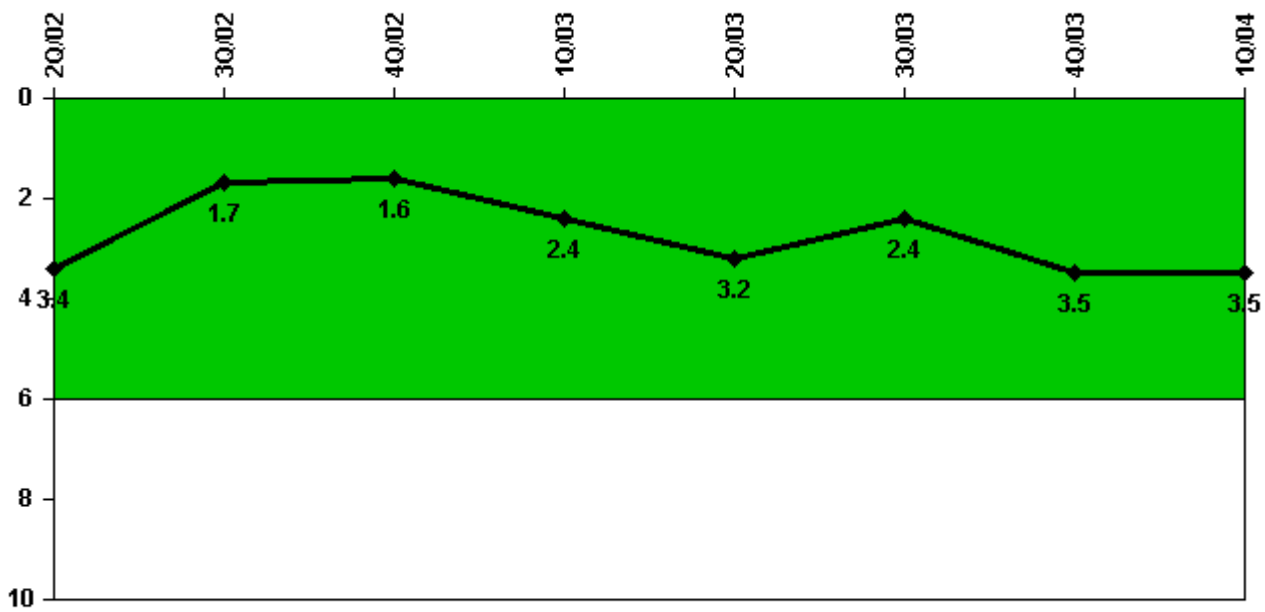
Thresholds: White > 2.0 Yellow > 10.0 Red > 20.0

#### Notes

Scrams with Loss of Normal Heat Removal	2Q/02	3Q/02	4Q/02	1Q/03	2Q/03	3Q/03	4Q/03	1Q/04
Scrams	0	0	0	0	0	0	0	0
Indicator value	0	0	0	0	0	0	0	0

Licensee Comments: none

### Unplanned Power Changes per 7000 Critical Hrs



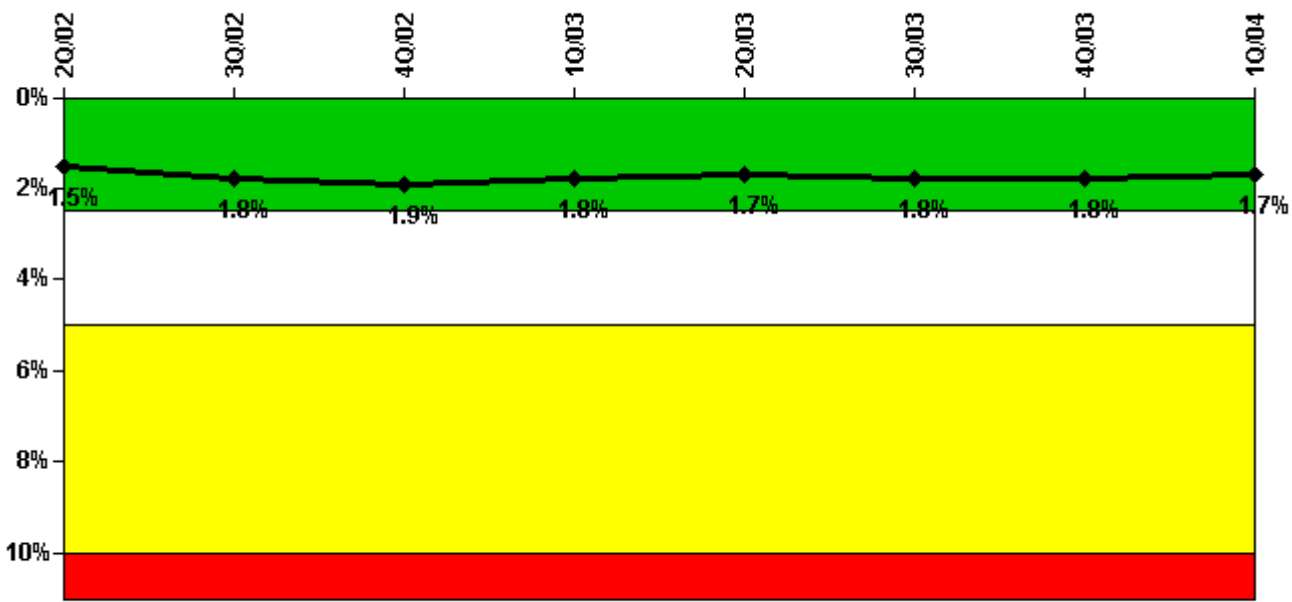
Thresholds: White > 6.0

#### Notes

Unplanned Power Changes per 7000 Critical Hrs	2Q/02	3Q/02	4Q/02	1Q/03	2Q/03	3Q/03	4Q/03	1Q/04
Unplanned power changes	1.0	1.0	0	1.0	2.0	0	1.0	1.0
Critical hours	2183.0	2208.0	2209.0	2160.0	2183.0	2204.2	1528.9	2184.0
Indicator value	3.4	1.7	1.6	2.4	3.2	2.4	3.5	3.5

Licensee Comments: none

### Safety System Unavailability, Emergency AC Power



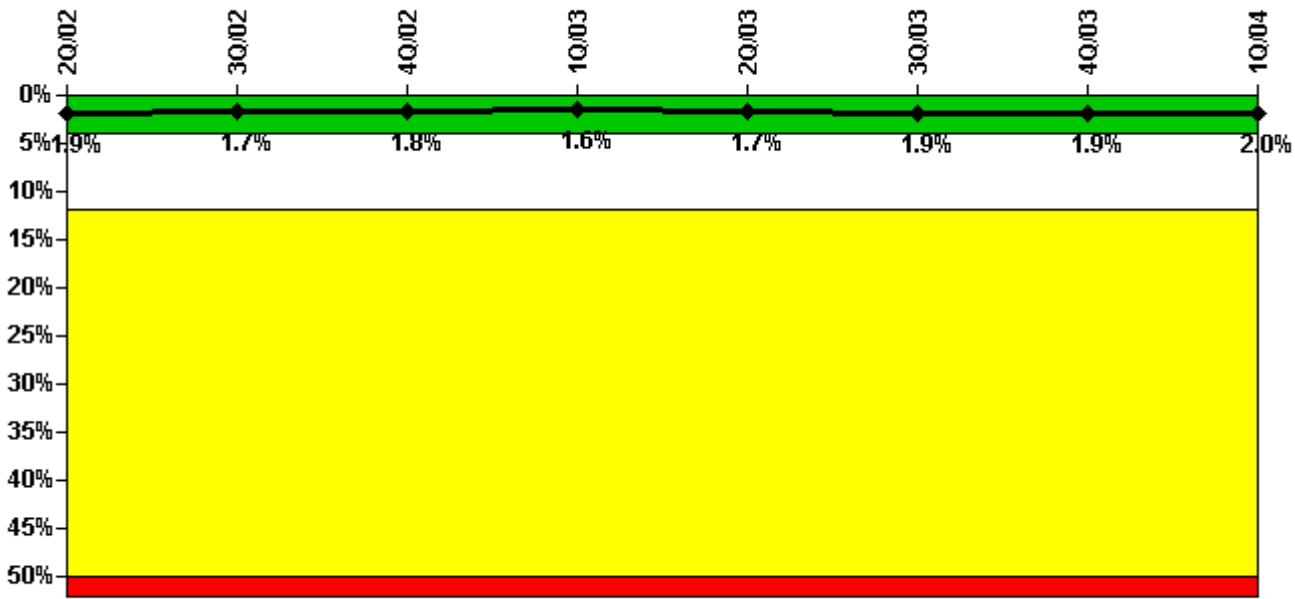
Thresholds: White > 2.5% Yellow > 5.0% Red > 10.0%

#### Notes

Safety System Unavailability, Emergency AC Power	2Q/02	3Q/02	4Q/02	1Q/03	2Q/03	3Q/03	4Q/03	1Q/04
<b>Train 1</b>								
Planned unavailable hours	24.37	14.61	49.90	21.47	11.20	38.25	5.83	7.56
Unplanned unavailable hours	0	141.90	0.35	15.75	0	0	0	0
Fault exposure hours	0	0	0	0	0	0	0	0
Effective Reset hours	0	0	0	0	0	0	0	0
Required hours	2183.00	2208.00	2209.00	2160.00	2183.00	2208.00	2209.00	2184.00
<b>Train 2</b>								
Planned unavailable hours	7.33	66.52	8.59	6.50	31.22	38.02	29.15	96.19
Unplanned unavailable hours	1.00	3.27	5.67	4.23	0	0	0	3.10
Fault exposure hours	0	0	0	0	0	0	0	0
Effective Reset hours	0	0	0	0	0	0	0	0
Required hours	2183.00	2208.00	2209.00	2160.00	2183.00	2208.00	2209.00	2184.00
<b>Indicator value</b>	<b>1.5%</b>	<b>1.8%</b>	<b>1.9%</b>	<b>1.8%</b>	<b>1.7%</b>	<b>1.8%</b>	<b>1.8%</b>	<b>1.7%</b>

Licensee Comments: none

### Safety System Unavailability, High Pressure Injection System (HPCI)



Thresholds: White > 4.0% Yellow > 12.0% Red > 50.0%

#### Notes

Safety System Unavailability, High Pressure Injection System (HPCI)	2Q/02	3Q/02	4Q/02	1Q/03	2Q/03	3Q/03	4Q/03	1Q/04
<b>Train 1</b>								
Planned unavailable hours	32.51	39.50	25.93	102.98	16.17	11.38	5.15	74.90
Unplanned unavailable hours	0	0	4.18	10.53	16.25	26.50	0	0
Fault exposure hours	0	0	0	0	0	0	0	0
Effective Reset hours	0	0	0	0	0	0	0	0
Required hours	2183.00	2208.00	2209.00	2160.00	2183.00	2204.22	1528.92	2184.00
<b>Indicator value</b>	<b>1.9%</b>	<b>1.7%</b>	<b>1.8%</b>	<b>1.6%</b>	<b>1.7%</b>	<b>1.9%</b>	<b>1.9%</b>	<b>2.0%</b>

Licensee Comments:

1Q/04: Following the Unit 3 scram on 01/30/2004, water entered the HPCI Steam line making the system unavailable. This was caused by an improper set point in the Feedwater Level Control System which has existed since the beginning of EPU operation until set point changes were made. This condition is a design deficiency that could not be detected through normal surveillance testing. For Unit 2, this condition existed at least from 11/07/01 until a setpoint change was made on 02/02/04, for a total of 18,937 critical hours. For Unit 3, this condition existed at least from 10/26/02 until a setpoint change was made on 02/01/04, for a total of 10,506 critical hours. A detailed model of the Feedwater Level Control system is being developed to analyze the system response both prior to and subsequent to the set point changes.

## Safety System Unavailability, Heat Removal System

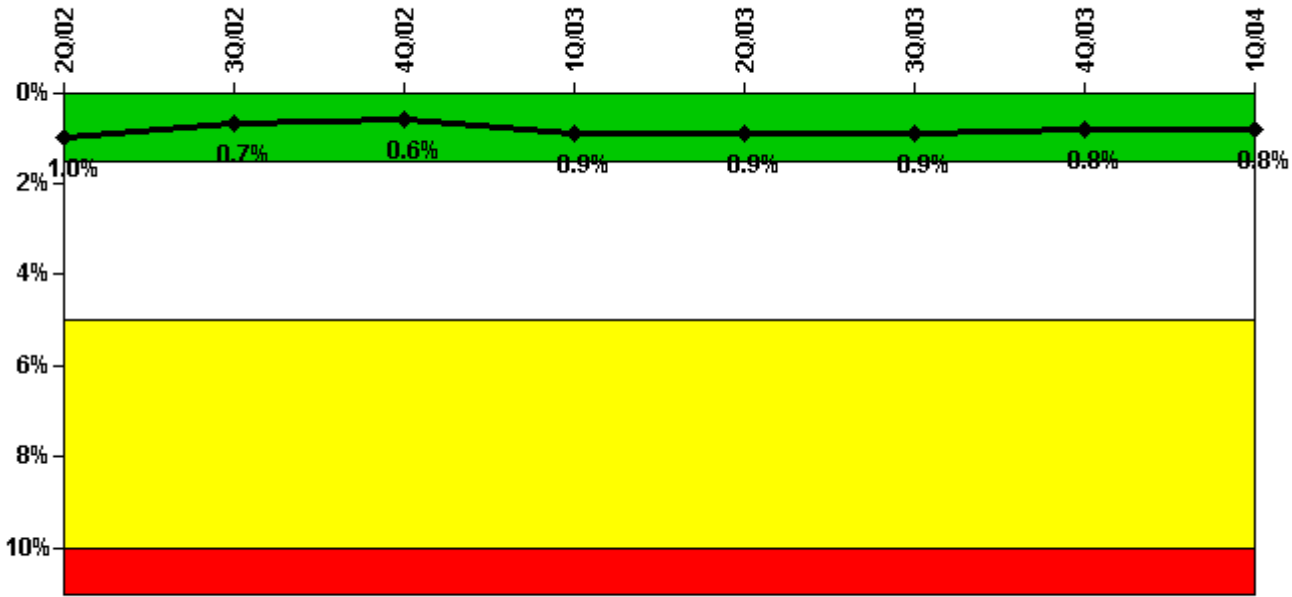
Thresholds  
under  
development /  
review

### Notes

Safety System Unavailability, Heat Removal System	2Q/02	3Q/02	4Q/02	1Q/03	2Q/03	3Q/03	4Q/03	1Q/04
<b>Train 1</b>								
Planned unavailable hours								
Unplanned unavailable hours								
Fault exposure hours								
Effective Reset hours	0	0	0	0	0	0	0	0
Required hours								
<b>Indicator value</b>								

Licensee Comments: none

### Safety System Unavailability, Residual Heat Removal System



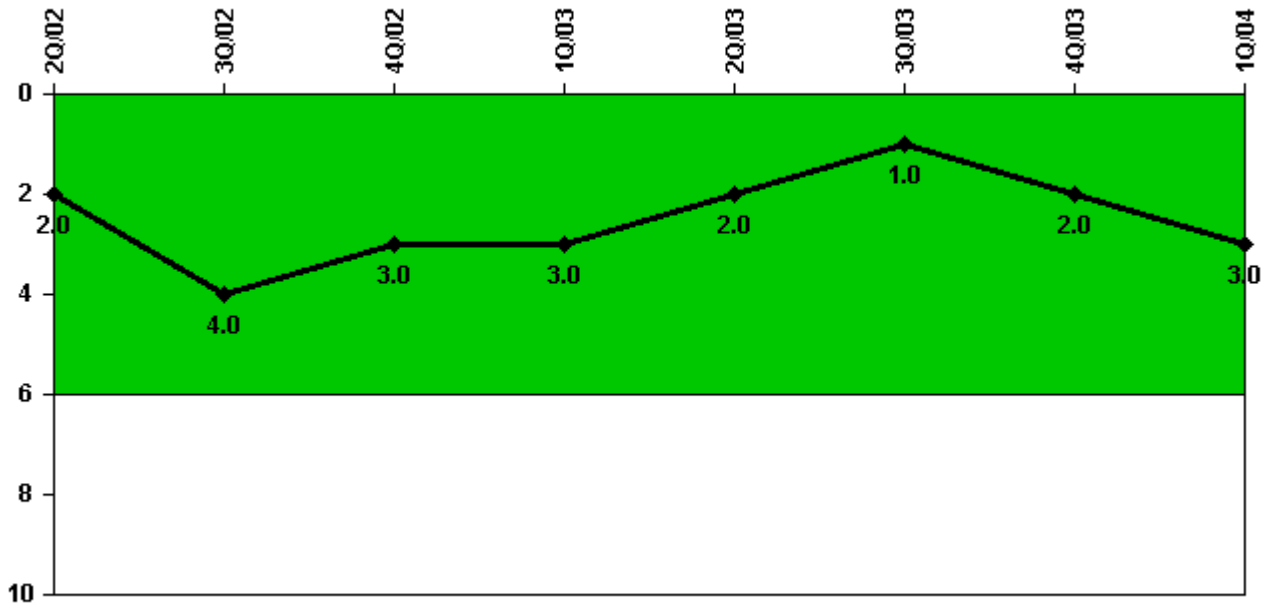
Thresholds: White > 1.5% Yellow > 5.0% Red > 10.0%

#### Notes

Safety System Unavailability, Residual Heat Removal System	2Q/02	3Q/02	4Q/02	1Q/03	2Q/03	3Q/03	4Q/03	1Q/04
<b>Train 1</b>								
Planned unavailable hours	3.12	0	0	125.72	2.97	6.05	24.37	18.90
Unplanned unavailable hours	21.48	0	0	1.97	0	0	0	0
Fault exposure hours	0	0	0	0	0	0	0	0
Effective Reset hours	0	0	0	0	0	0	0	0
Required hours	2183.00	2208.00	2209.00	2160.00	2183.00	2204.22	2209.00	2184.00
<b>Train 2</b>								
Planned unavailable hours	40.98	0	0	113.92	2.38	0	6.40	4.72
Unplanned unavailable hours	0	44.97	0	0	0	0	0	0
Fault exposure hours	0	0	0	0	0	0	0	0
Effective Reset hours	0	0	0	0	0	0	0	0
Required hours	2183.00	2208.00	2209.00	2160.00	2183.00	2204.22	2209.00	2184.00
<b>Train 3</b>								
Planned unavailable hours	0	25.28	0	0	0	16.60	0	0
Unplanned unavailable hours	0	0	0	0	0	0	0.42	0
Fault exposure hours	0	0	0	0	0	0	0	0
Effective Reset hours	0	0	0	0	0	0	0	0
Required hours	2183.00	2208.00	2209.00	2160.00	2183.00	2208.00	2209.00	2184.00
<b>Train 4</b>								
Planned unavailable hours	0	25.28	0	0	0	16.58	0	0
Unplanned unavailable hours	0	0	0	0	0	0	0	0
Fault exposure hours	0	0	0	0	0	0	0	0
Effective Reset hours	0	0	0	0	0	0	0	0
Required hours	2183.00	2208.00	2209.00	2160.00	2183.00	2208.00	2209.00	2184.00
<b>Indicator value</b>	<b>1.0%</b>	<b>0.7%</b>	<b>0.6%</b>	<b>0.9%</b>	<b>0.9%</b>	<b>0.9%</b>	<b>0.8%</b>	<b>0.8%</b>

Licensee Comments: none

### Safety System Functional Failures (BWR)



Thresholds: White > 6.0

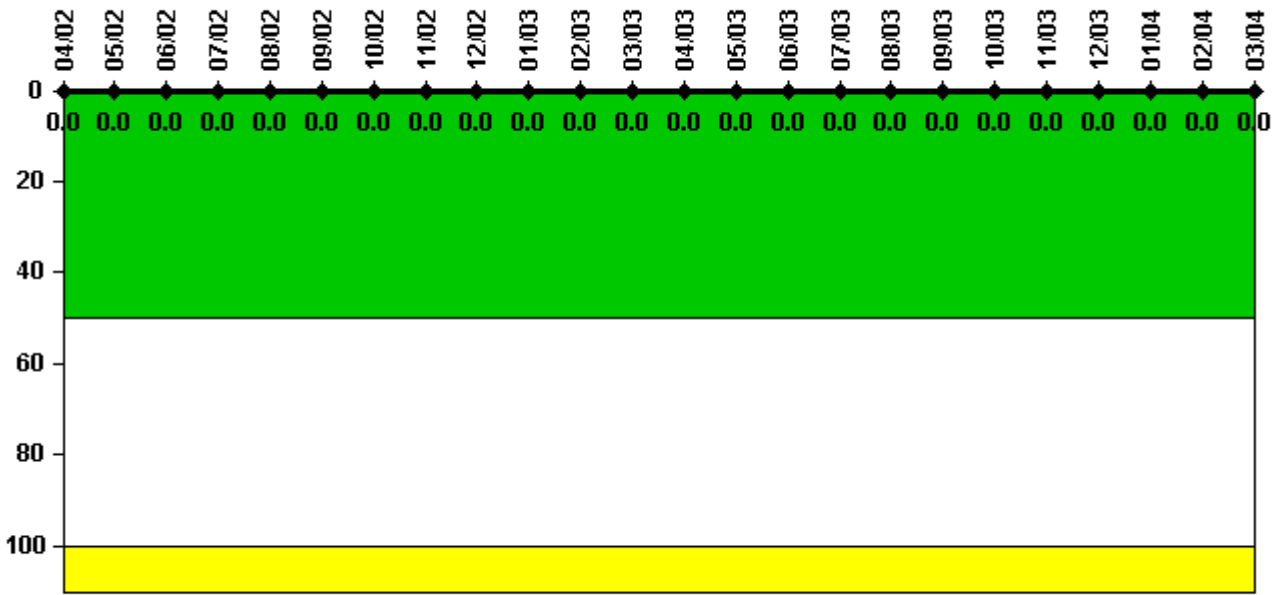
#### Notes

Safety System Functional Failures (BWR)	2Q/02	3Q/02	4Q/02	1Q/03	2Q/03	3Q/03	4Q/03	1Q/04
Safety System Functional Failures	1	2	0	0	0	1	1	1
Indicator value	2	4	3	3	2	1	2	3

Licensee Comments: none



### Reactor Coolant System Activity



Thresholds: White > 50.0 Yellow > 100.0

### Notes

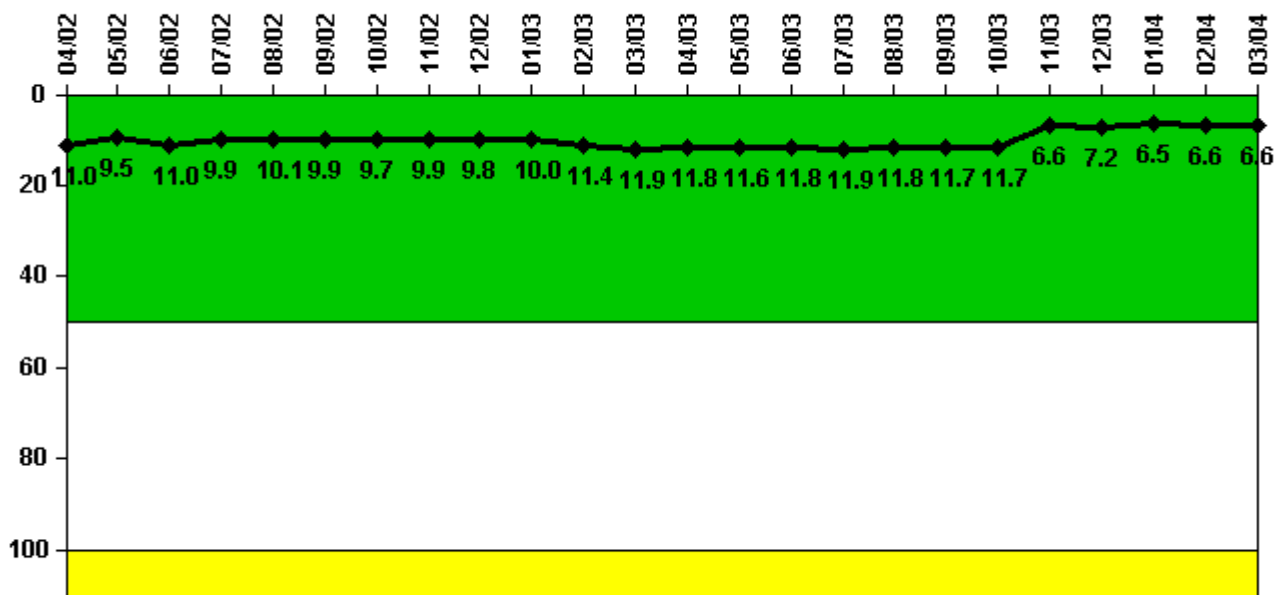
Reactor Coolant System Activity	4/02	5/02	6/02	7/02	8/02	9/02	10/02	11/02	12/02	1/03	2/03	3/03
Maximum activity	0.000004	0.000006	0.000006	0.000008	0.000024	0.000005	0.000006	0.000005	0.000029	0.000006	0.000006	0.000006
Technical specification limit	0.2	0.2	0.2	0.2	0.2	0.2	0.2	0.2	0.2	0.2	0.2	0.2
Indicator value	0	0	0	0	0	0	0	0	0	0	0	0

Reactor Coolant System Activity	4/03	5/03	6/03	7/03	8/03	9/03	10/03	11/03	12/03	1/04	2/04	3/04
Maximum activity	0.000013	0.000017	0.000025	0.000005	0.000004	0.000005	0.000004	0.000010	0.000010	0.000008	0.000035	0.000006
Technical specification limit	0.2	0.2	0.2	0.2	0.2	0.2	0.2	0.2	0.2	0.2	0.2	0.2
Indicator value	0	0	0	0	0	0	0	0	0	0	0	0

Licensee Comments: none

### Reactor Coolant System Leakage



Thresholds: White > 50.0 Yellow > 100.0

#### Notes

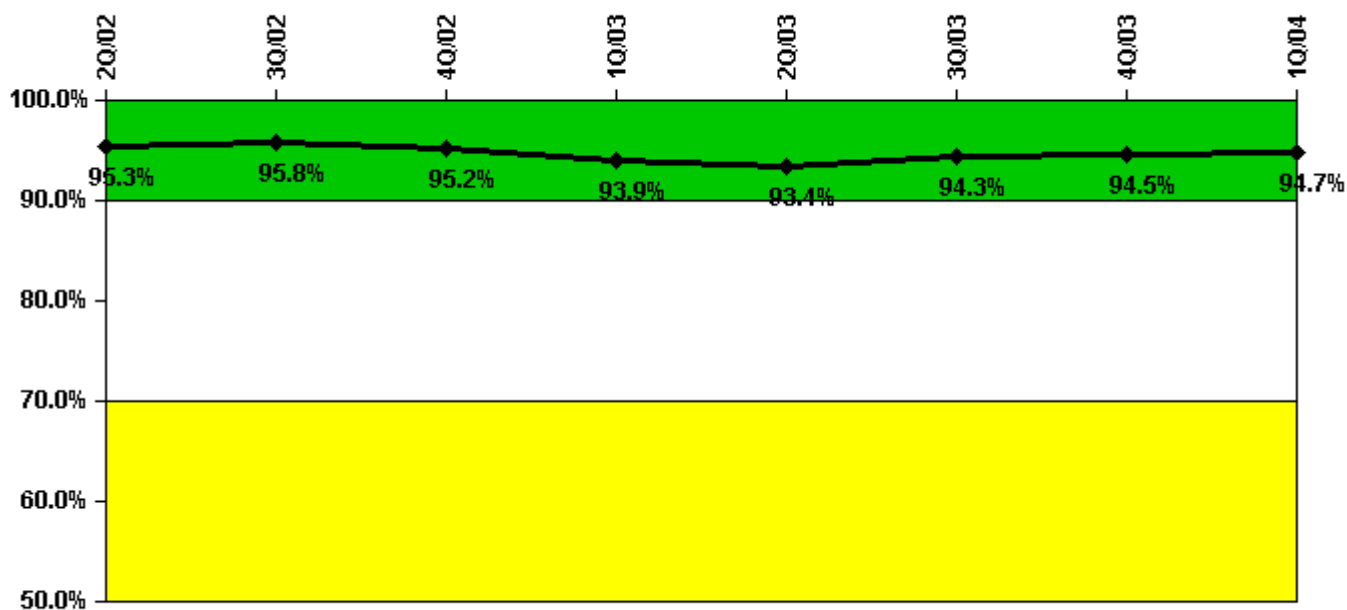
Reactor Coolant System Leakage	4/02	5/02	6/02	7/02	8/02	9/02	10/02	11/02	12/02	1/03	2/03	3/03
Maximum leakage	2.750	2.387	2.741	2.483	2.532	2.468	2.433	2.485	2.457	2.505	2.853	2.987
Technical specification limit	25.0	25.0	25.0	25.0	25.0	25.0	25.0	25.0	25.0	25.0	25.0	25.0
Indicator value	11.0	9.5	11.0	9.9	10.1	9.9	9.7	9.9	9.8	10.0	11.4	11.9

Reactor Coolant System Leakage	4/03	5/03	6/03	7/03	8/03	9/03	10/03	11/03	12/03	1/04	2/04	3/04
Maximum leakage	2.957	2.890	2.945	2.978	2.938	2.937	2.913	1.653	1.790	1.625	1.643	1.638
Technical specification limit	25.0	25.0	25.0	25.0	25.0	25.0	25.0	25.0	25.0	25.0	25.0	25.0
Indicator value	11.8	11.6	11.8	11.9	11.8	11.7	11.7	6.6	7.2	6.5	6.6	6.6

Licensee Comments: none

### Drill/Exercise Performance



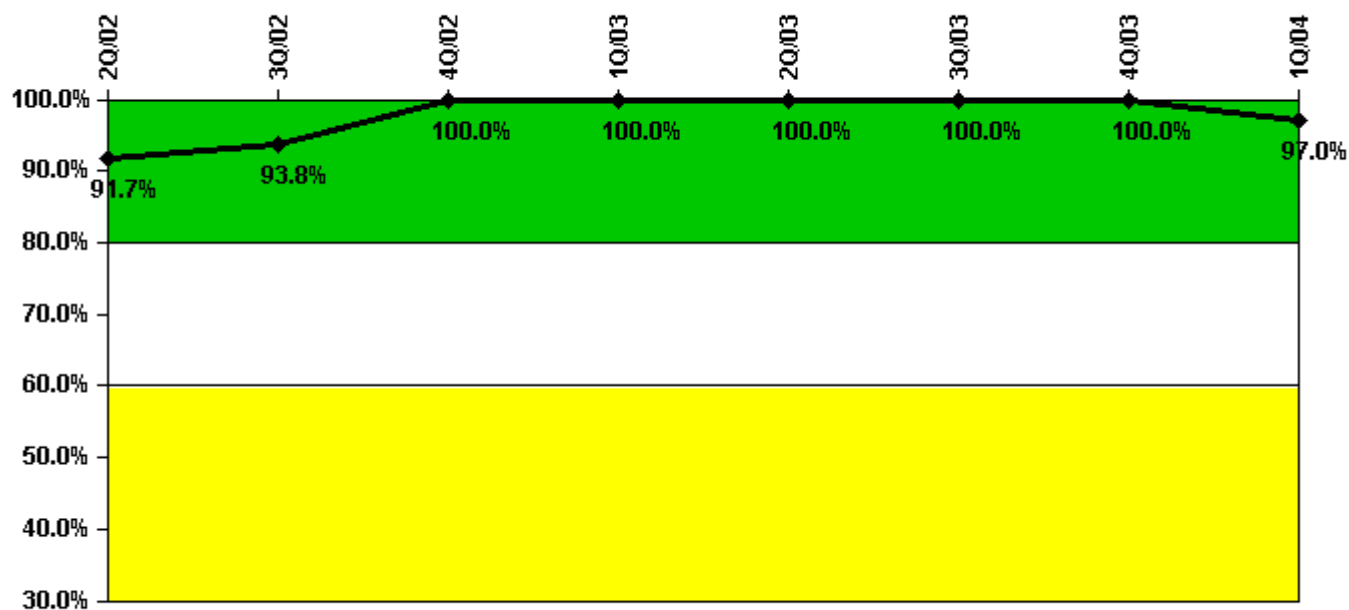
Thresholds: White < 90.0% Yellow < 70.0%

### Notes

Drill/Exercise Performance	2Q/02	3Q/02	4Q/02	1Q/03	2Q/03	3Q/03	4Q/03	1Q/04
Successful opportunities	12.0	1.0	39.0	27.0	56.0	56.0	0	22.0
Total opportunities	12.0	1.0	40.0	30.0	62.0	58.0	0	22.0
Indicator value	95.3%	95.8%	95.2%	93.9%	93.4%	94.3%	94.5%	94.7%

Licensee Comments: none

### ERO Drill Participation



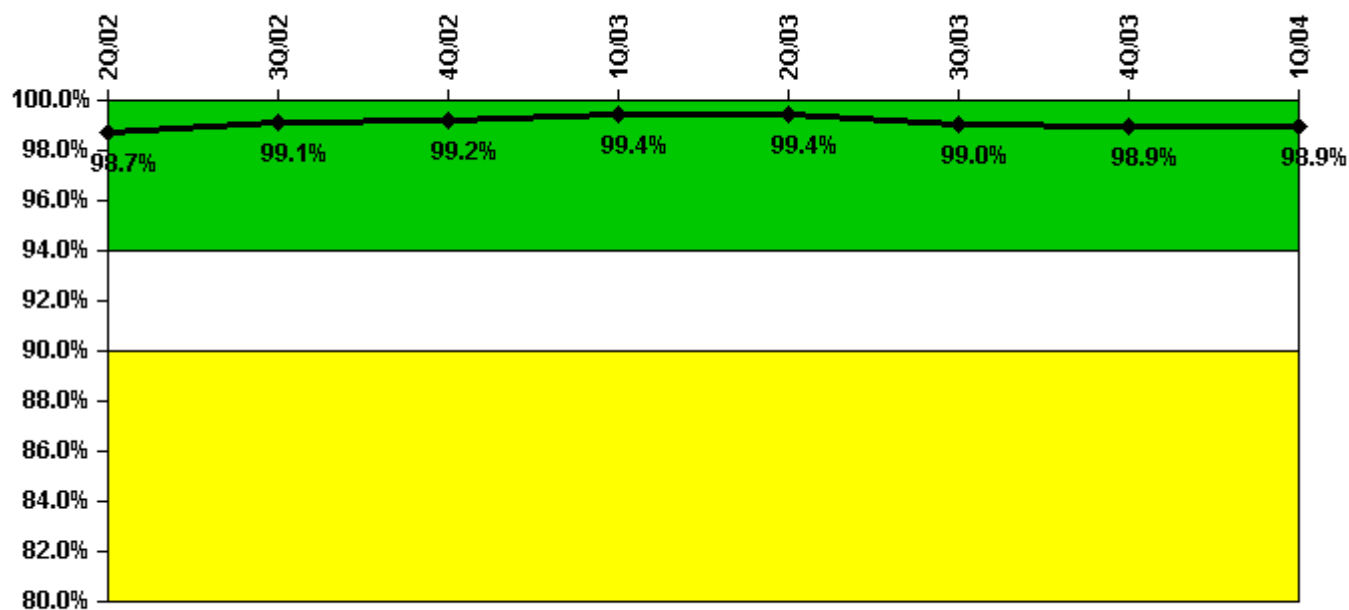
Thresholds: White < 80.0% Yellow < 60.0%

#### Notes

ERO Drill Participation	2Q/02	3Q/02	4Q/02	1Q/03	2Q/03	3Q/03	4Q/03	1Q/04
Participating Key personnel	44.0	45.0	47.0	51.0	50.0	50.0	49.0	64.0
Total Key personnel	48.0	48.0	47.0	51.0	50.0	50.0	49.0	66.0
Indicator value	91.7%	93.8%	100.0%	100.0%	100.0%	100.0%	100.0%	97.0%

Licensee Comments: none

### Alert & Notification System



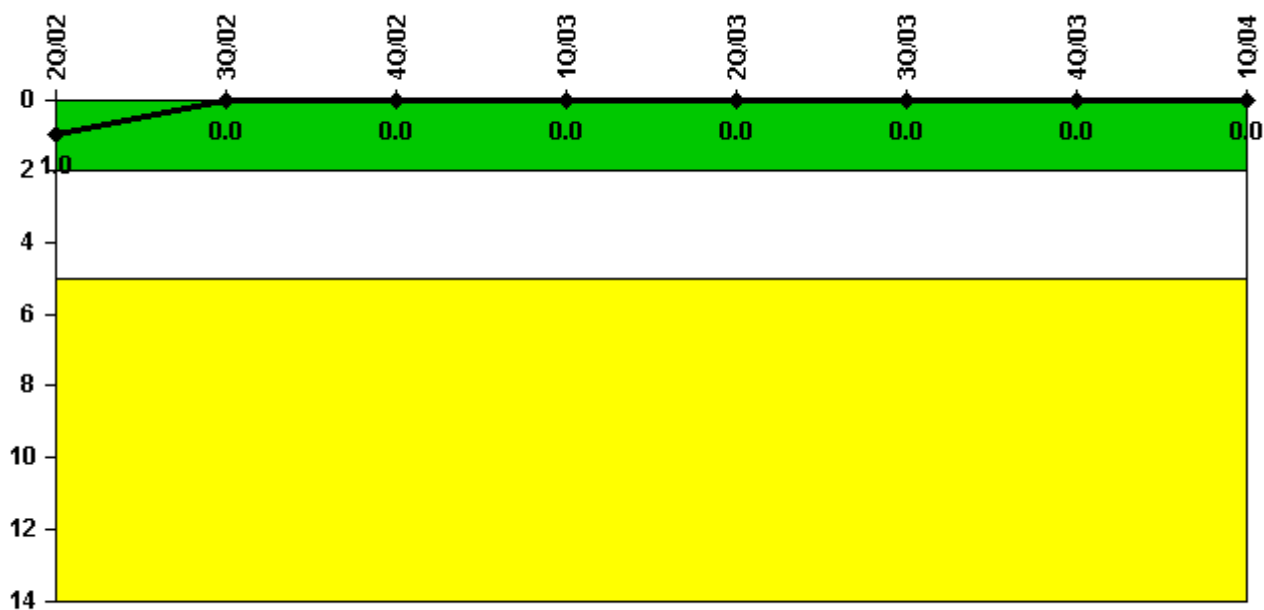
Thresholds: White < 94.0% Yellow < 90.0%

#### Notes

Alert & Notification System	2Q/02	3Q/02	4Q/02	1Q/03	2Q/03	3Q/03	4Q/03	1Q/04
Successful siren-tests	4979	5035	5047	4961	4974	4897	4964	4974
Total sirens-tests	5056	5056	5056	4977	5056	4994	4992	4992
Indicator value	98.7%	99.1%	99.2%	99.4%	99.4%	99.0%	98.9%	98.9%

Licensee Comments: none

### Occupational Exposure Control Effectiveness



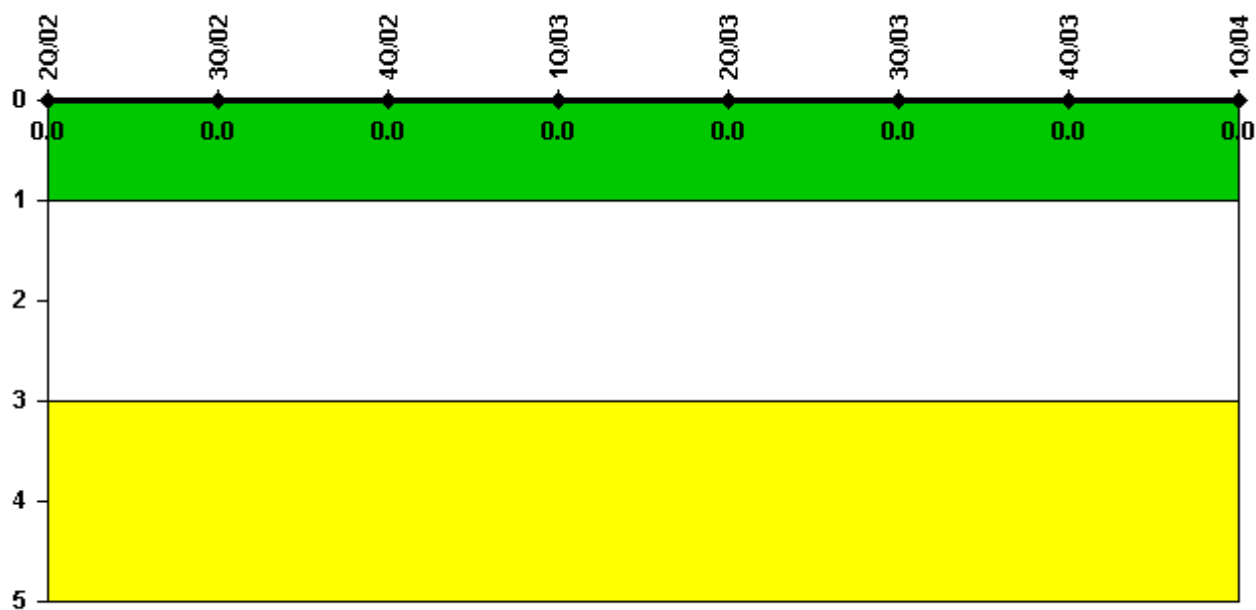
Thresholds: White > 2.0 Yellow > 5.0

#### Notes

Occupational Exposure Control Effectiveness	2Q/02	3Q/02	4Q/02	1Q/03	2Q/03	3Q/03	4Q/03	1Q/04
High radiation area occurrences	0	0	0	0	0	0	0	0
Very high radiation area occurrences	0	0	0	0	0	0	0	0
Unintended exposure occurrences	0	0	0	0	0	0	0	0
<b>Indicator value</b>	<b>1</b>	<b>0</b>	<b>0</b>	<b>0</b>	<b>0</b>	<b>0</b>	<b>0</b>	<b>0</b>

Licensee Comments: none

### RETS/ODCM Radiological Effluent



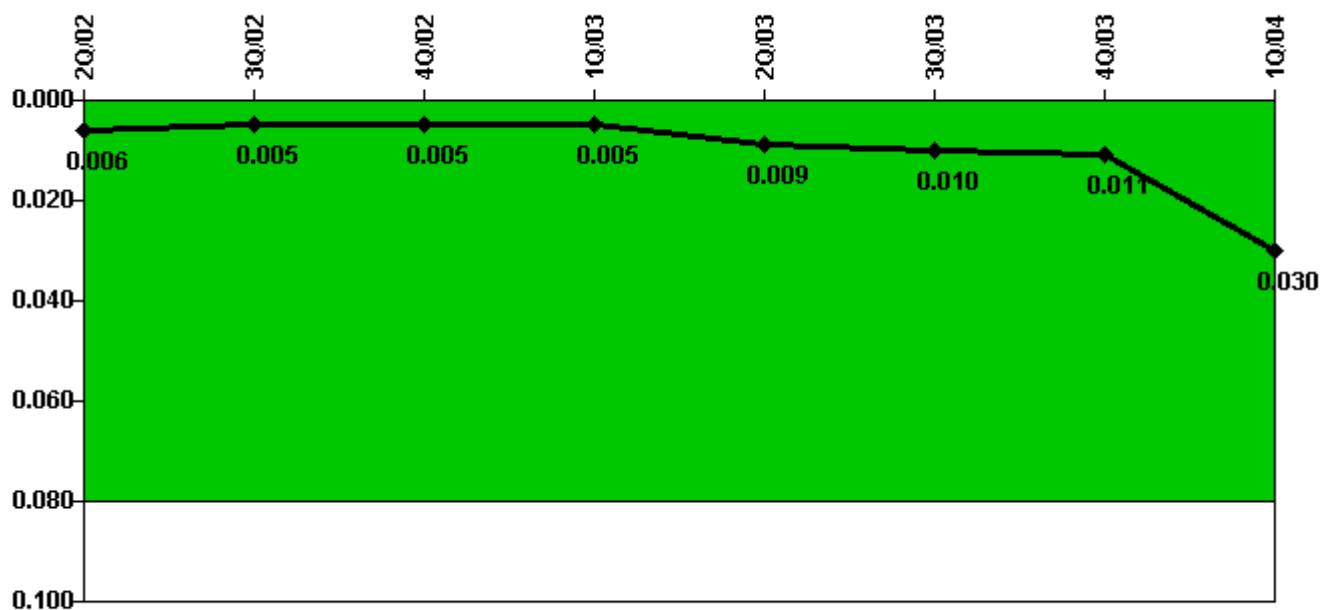
**Thresholds: White > 1.0 Yellow > 3.0**

#### Notes

RETS/ODCM Radiological Effluent	2Q/02	3Q/02	4Q/02	1Q/03	2Q/03	3Q/03	4Q/03	1Q/04
RETS/ODCM occurrences	0	0	0	0	0	0	0	0
<b>Indicator value</b>	<b>0</b>	<b>0</b>	<b>0</b>	<b>0</b>	<b>0</b>	<b>0</b>	<b>0</b>	<b>0</b>

Licensee Comments: none

### Protected Area Security Performance Index



Thresholds: White > 0.080

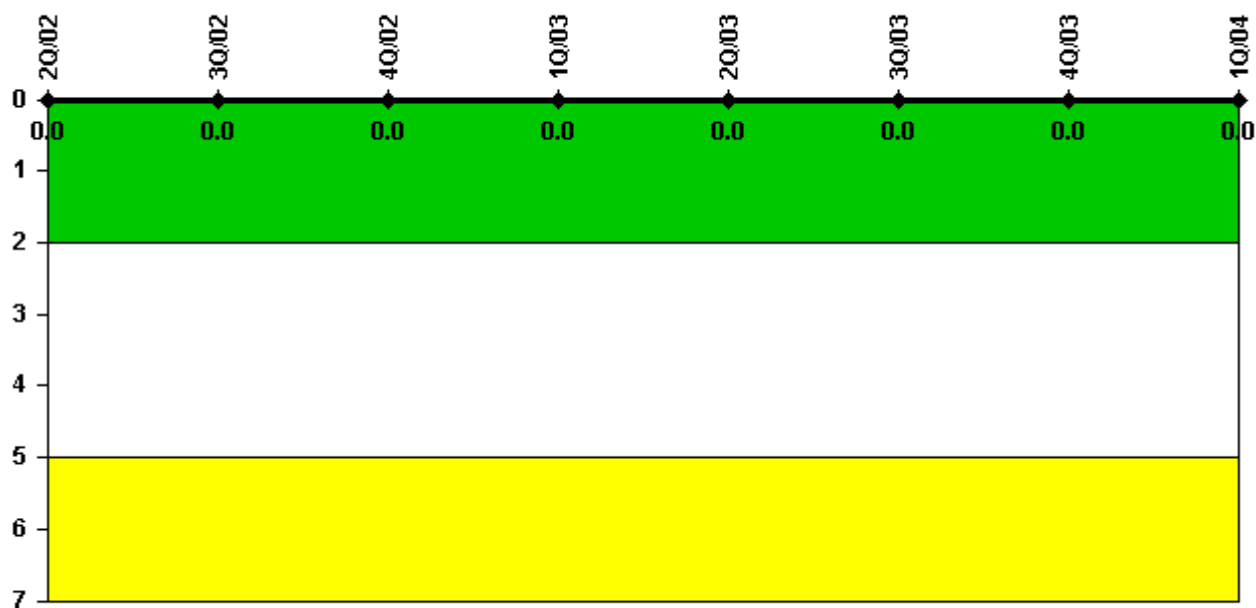
#### Notes

Protected Area Security Performance Index	2Q/02	3Q/02	4Q/02	1Q/03	2Q/03	3Q/03	4Q/03	1Q/04
IDS compensatory hours	27.70	40.60	8.30	12.10	133.08	51.97	38.99	165.75
CCTV compensatory hours	0	0	6.2	5.7	0	1.8	7.7	217.7
IDS normalization factor	1.30	1.30	1.30	1.30	1.30	1.30	1.30	1.30
CCTV normalization factor	1.0	1.0	1.0	1.0	1.0	1.0	1.0	1.0
<b>Index Value</b>	<b>0.006</b>	<b>0.005</b>	<b>0.005</b>	<b>0.005</b>	<b>0.009</b>	<b>0.010</b>	<b>0.011</b>	<b>0.030</b>

Licensee Comments: none



### Personnel Screening Program



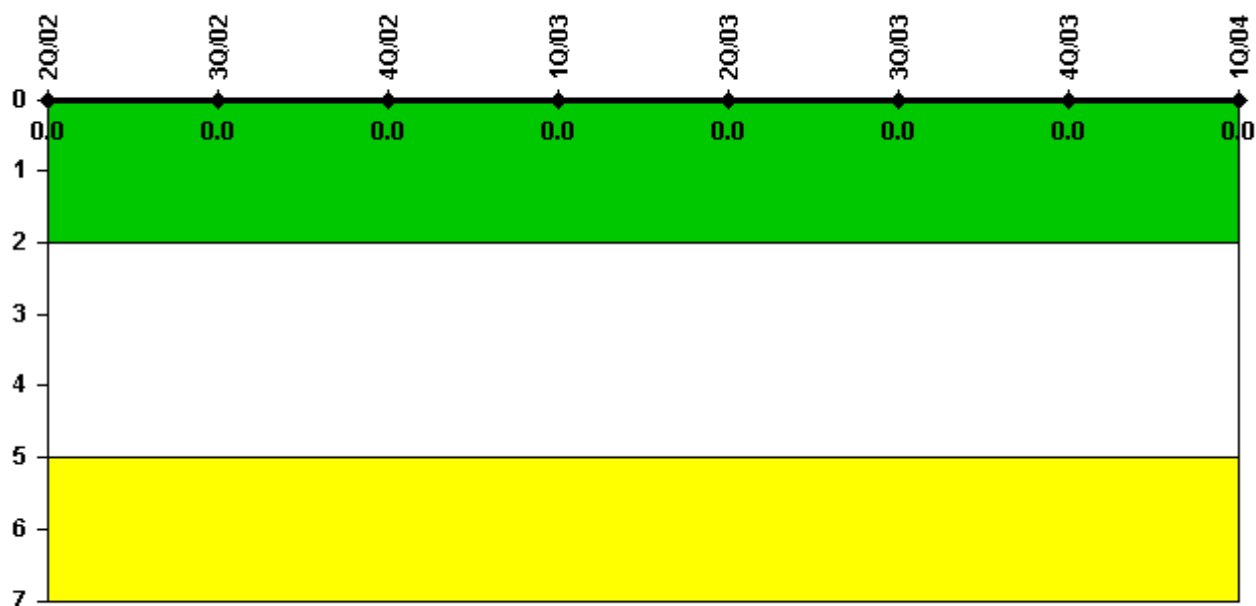
Thresholds: White > 2.0 Yellow > 5.0

#### Notes

Personnel Screening Program	2Q/02	3Q/02	4Q/02	1Q/03	2Q/03	3Q/03	4Q/03	1Q/04
Program failures	0	0	0	0	0	0	0	0
Indicator value	0	0	0	0	0	0	0	0

Licensee Comments: none

### FFD/Personnel Reliability



Thresholds: White > 2.0 Yellow > 5.0

#### Notes

FFD/Personnel Reliability	2Q/02	3Q/02	4Q/02	1Q/03	2Q/03	3Q/03	4Q/03	1Q/04
Program Failures	0	0	0	0	0	0	0	0
<b>Indicator value</b>	<b>0</b>	<b>0</b>	<b>0</b>	<b>0</b>	<b>0</b>	<b>0</b>	<b>0</b>	<b>0</b>

Licensee Comments: none

▲ [PI Summary](#) | [Inspection Findings Summary](#) | [Reactor Oversight Process](#)

Last Modified: April 22, 2004