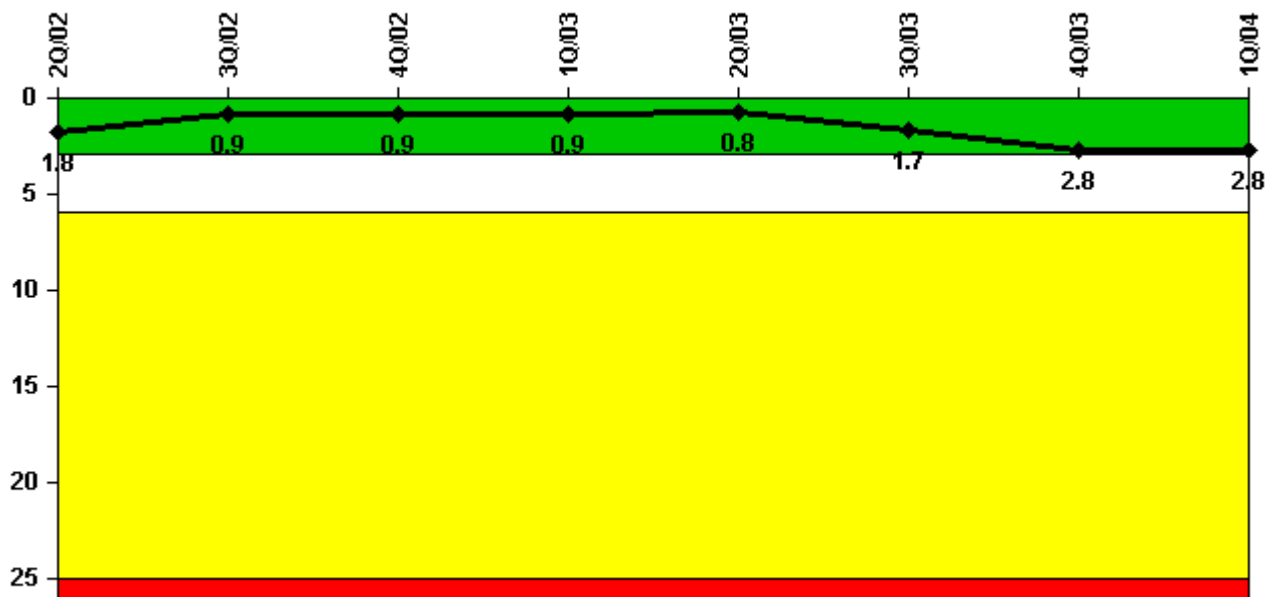


## Comanche Peak 2

### 1Q/2004 Performance Indicators

Licensee's General Comments: none

#### Unplanned Scrams per 7000 Critical Hrs



Thresholds: White > 3.0 Yellow > 6.0 Red > 25.0

#### Notes

Unplanned Scrams per 7000 Critical Hrs	2Q/02	3Q/02	4Q/02	1Q/03	2Q/03	3Q/03	4Q/03	1Q/04
Unplanned scrams	1.0	0	0	0	1.0	1.0	1.0	0
Critical hours	1409.0	2208.0	2209.0	2160.0	1850.0	1821.6	1551.5	2184.0
<b>Indicator value</b>	<b>1.8</b>	<b>0.9</b>	<b>0.9</b>	<b>0.9</b>	<b>0.8</b>	<b>1.7</b>	<b>2.8</b>	<b>2.8</b>

Licensee Comments: none

### Scrams with Loss of Normal Heat Removal



Thresholds: White > 2.0 Yellow > 10.0 Red > 20.0

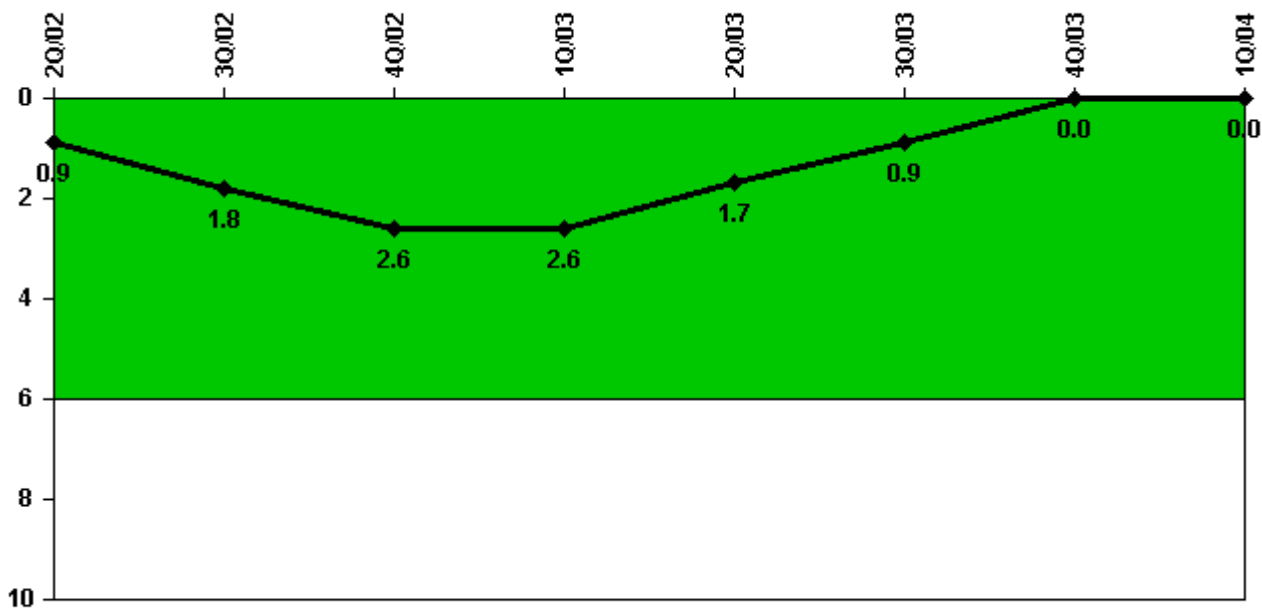
#### Notes

Scrams with Loss of Normal Heat Removal	2Q/02	3Q/02	4Q/02	1Q/03	2Q/03	3Q/03	4Q/03	1Q/04
Scrams	0	0	0	0	0	0	0	0
Indicator value	0	0	0	0	0	0	0	0

Licensee Comments:

2Q/03: Per FAQ 355 partial lost of offsite power should not be counted as a scram with loss of normal cooling, therefore, this event should not have been counted.

### Unplanned Power Changes per 7000 Critical Hrs



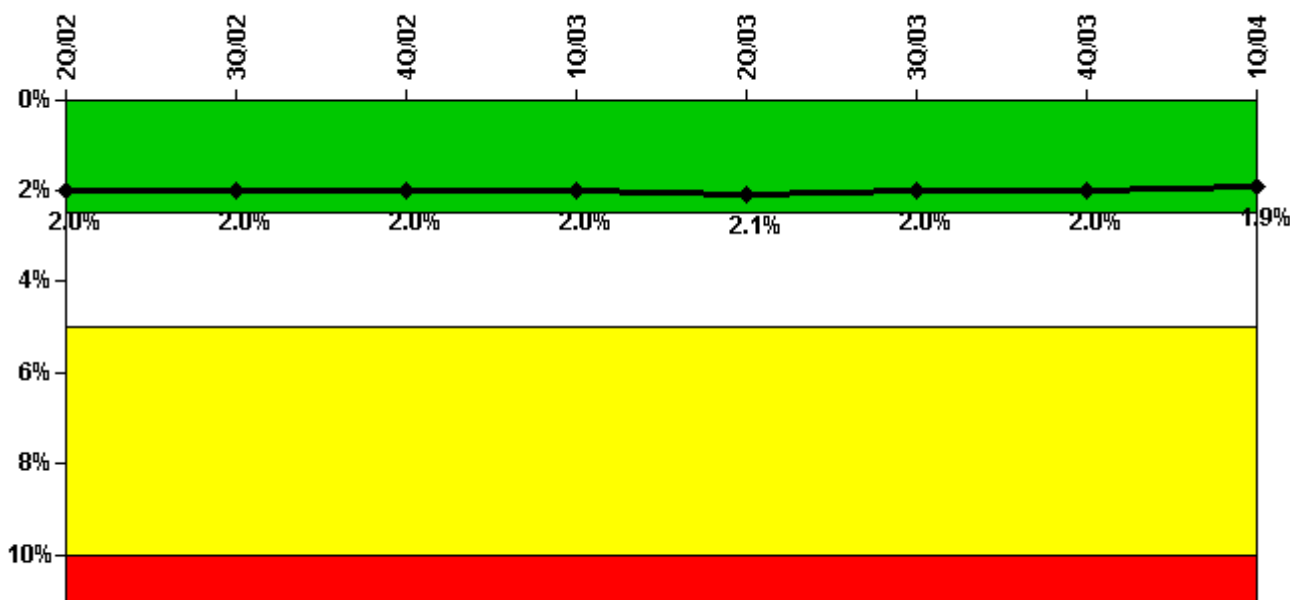
Thresholds: White > 6.0

#### Notes

Unplanned Power Changes per 7000 Critical Hrs	2Q/02	3Q/02	4Q/02	1Q/03	2Q/03	3Q/03	4Q/03	1Q/04
Unplanned power changes	1.0	1.0	1.0	0	0	0	0	0
Critical hours	1409.0	2208.0	2209.0	2160.0	1850.0	1821.6	1551.5	2184.0
Indicator value	0.9	1.8	2.6	2.6	1.7	0.9	0	0

Licensee Comments: none

### Safety System Unavailability, Emergency AC Power



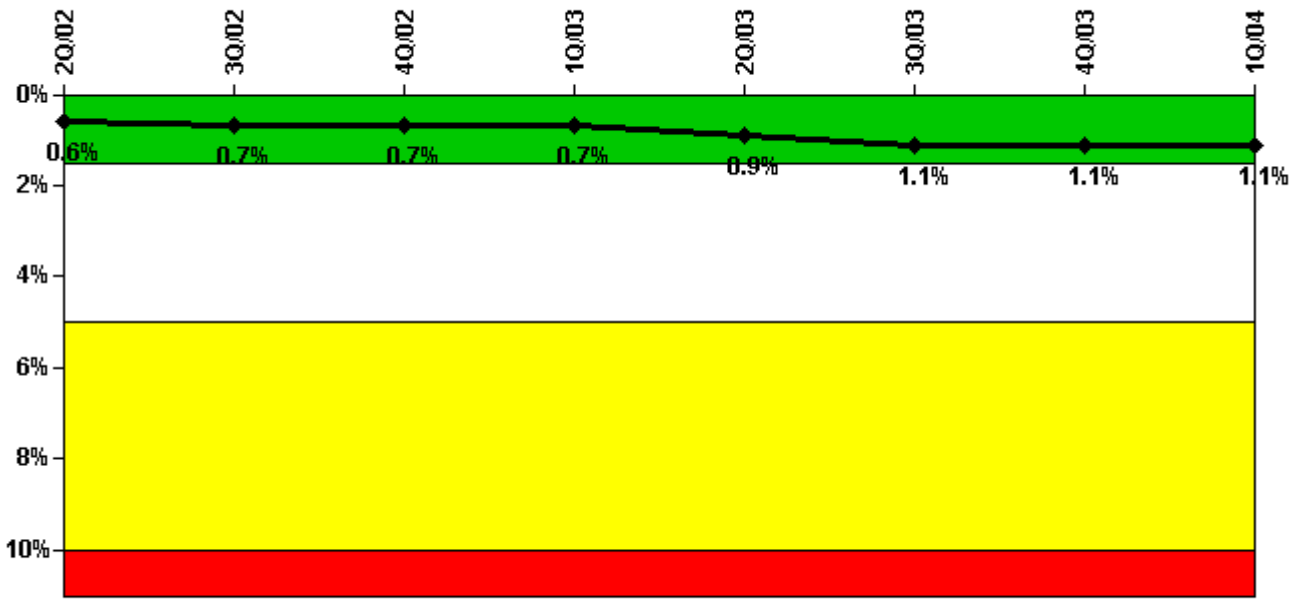
Thresholds: White > 2.5% Yellow > 5.0% Red > 10.0%

#### Notes

Safety System Unavailability, Emergency AC Power	2Q/02	3Q/02	4Q/02	1Q/03	2Q/03	3Q/03	4Q/03	1Q/04
<b>Train 1</b>								
Planned unavailable hours	5.40	13.40	3.60	6.10	29.60	9.70	3.30	6.30
Unplanned unavailable hours	0	0	1.30	0	28.80	0	0	7.30
Fault exposure hours	0	0	0	0	0	0	0	0
Effective Reset hours	0	0	0	0	0	0	0	0
Required hours	2183.00	2208.00	2209.00	2160.00	2183.00	2208.00	2209.00	2184.00
<b>Train 2</b>								
Planned unavailable hours	2.90	6.10	7.20	7.20	56.80	9.30	5.60	4.80
Unplanned unavailable hours	0	0	0	0	0	0	0	0
Fault exposure hours	0	0	0	0	0	0	0	0
Effective Reset hours	0	0	0	0	0	0	0	0
Required hours	2183.00	2208.00	2209.00	2160.00	2183.00	2208.00	2209.00	2184.00
<b>Indicator value</b>	<b>2.0%</b>	<b>2.0%</b>	<b>2.0%</b>	<b>2.0%</b>	<b>2.1%</b>	<b>2.0%</b>	<b>2.0%</b>	<b>1.9%</b>

Licensee Comments: none

### Safety System Unavailability, High Pressure Injection System (HPSI)



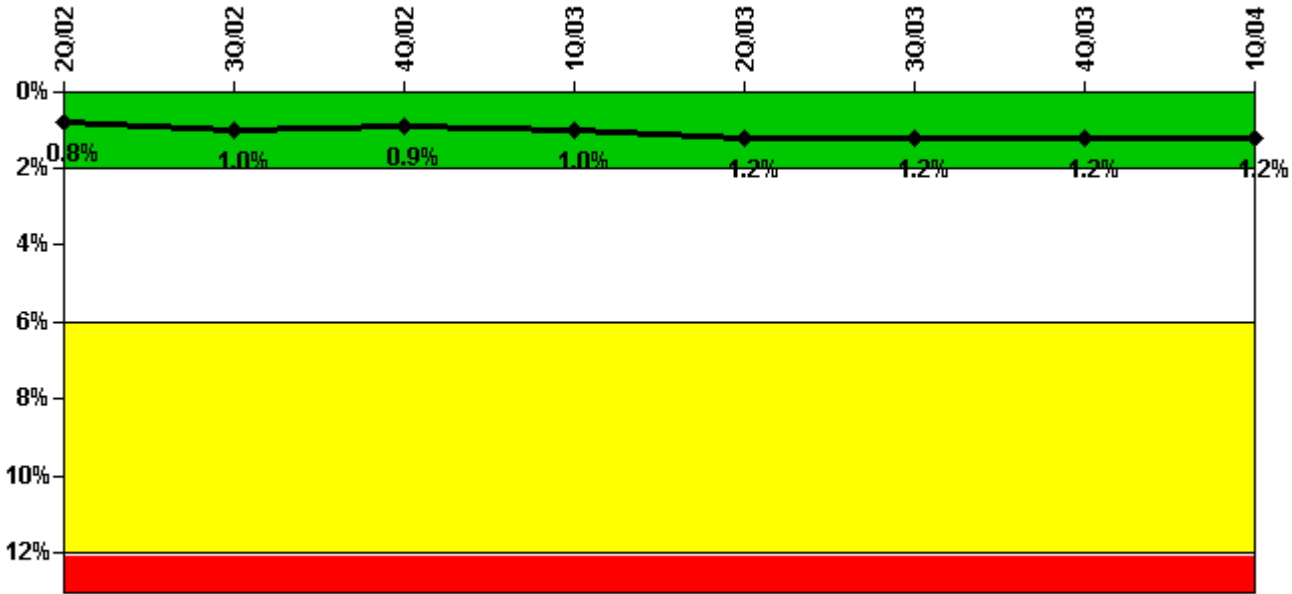
Thresholds: White > 1.5% Yellow > 5.0% Red > 10.0%

#### Notes

Safety System Unavailability, High Pressure Injection System (HPSI)	2Q/02	3Q/02	4Q/02	1Q/03	2Q/03	3Q/03	4Q/03	1Q/04
<b>Train 1</b>								
Planned unavailable hours	37.50	7.80	2.80	33.70	50.50	29.50	3.60	50.90
Unplanned unavailable hours	0	2.00	0.50	0	28.80	6.10	0.60	0
Fault exposure hours	0	0	0	0	0	0	0	0
Effective Reset hours	0	0	0	0	0	0	0	0
Required hours	1409.00	2208.00	2209.00	2160.00	1850.00	1821.60	1551.45	2184.00
<b>Train 2</b>								
Planned unavailable hours	13.70	9.40	4.30	27.10	46.20	57.80	10.30	20.50
Unplanned unavailable hours	0	0	0	0	0.80	0.60	0	0
Fault exposure hours	0	0	0	0	0	0	0	0
Effective Reset hours	0	0	0	0	0	0	0	0
Required hours	1409.00	2208.00	2209.00	2160.00	1850.00	1821.60	1551.45	2184.00
<b>Train 3</b>								
Planned unavailable hours	35.10	8.60	2.80	16.40	46.20	14.70	3.30	30.80
Unplanned unavailable hours	0	0	0.50	0	28.80	6.10	0.60	0
Fault exposure hours	0	0	0	0	0	0	0	0
Effective Reset hours	0	0	0	0	0	0	0	0
Required hours	1409.00	2208.00	2209.00	2160.00	1850.00	1821.60	1551.45	2184.00
<b>Train 4</b>								
Planned unavailable hours	1.40	9.70	4.30	22.80	45.50	32.50	12.10	20.50
Unplanned unavailable hours	0	0	0	0	0.80	0.60	0	0
Fault exposure hours	0	0	0	0	0	0	0	0
Effective Reset hours	0	0	0	0	0	0	0	0
Required hours	1409.00	2208.00	2209.00	2160.00	1850.00	1821.60	1551.45	2184.00
<b>Indicator value</b>	<b>0.6%</b>	<b>0.7%</b>	<b>0.7%</b>	<b>0.7%</b>	<b>0.9%</b>	<b>1.1%</b>	<b>1.1%</b>	<b>1.1%</b>

Licensee Comments: none

### Safety System Unavailability, Heat Removal System (AFW)



Thresholds: White > 2.0% Yellow > 6.0% Red > 12.0%

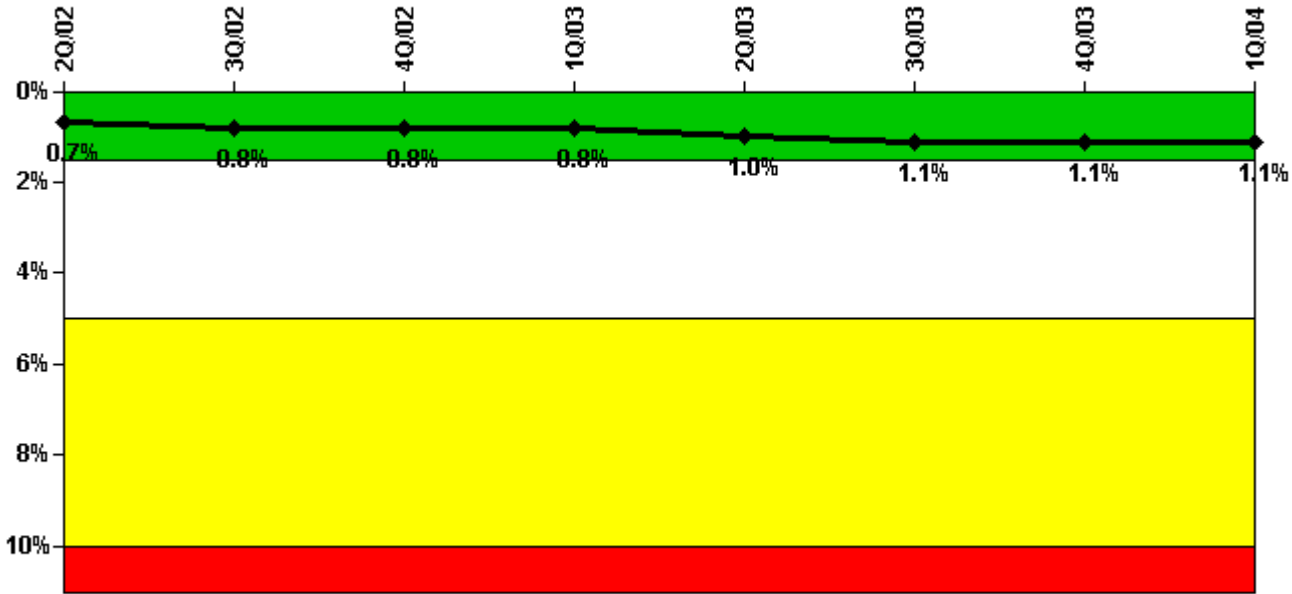
#### Notes

Safety System Unavailability, Heat Removal System (AFW)	2Q/02	3Q/02	4Q/02	1Q/03	2Q/03	3Q/03	4Q/03	1Q/04
<b>Train 1</b>								
Planned unavailable hours	72.10	76.70	2.80	12.20	10.40	27.30	30.80	3.50
Unplanned unavailable hours	35.80	11.80	0	0	0	0	0	0
Fault exposure hours	0	0	0	0	0	0	0	0
Effective Reset hours	0	0	0	0	0	0	0	0
Required hours	1409.00	2208.00	2209.00	2160.00	1850.00	1821.60	1551.45	2184.00
<b>Train 2</b>								
Planned unavailable hours	36.50	10.50	3.40	18.50	48.70	15.70	5.00	29.60
Unplanned unavailable hours	0	0	0	0	28.80	6.10	0.60	0
Fault exposure hours	0	0	0	0	0	0	0	0
Effective Reset hours	0	0	0	0	0	0	0	0
Required hours	1409.00	2208.00	2209.00	2160.00	1850.00	1821.60	1551.45	2184.00
<b>Train 3</b>								
Planned unavailable hours	7.50	6.70	5.50	20.40	44.80	40.50	6.20	24.60
Unplanned unavailable hours	0	0	0	0	1.20	0.60	0	0
Fault exposure hours	0	0	0	0	0	0	0	0
Effective Reset hours	0	0	0	0	0	0	0	0
Required hours	1409.00	2208.00	2209.00	2160.00	1850.00	1821.60	1551.45	2184.00
<b>Indicator value</b>	<b>0.8%</b>	<b>1.0%</b>	<b>0.9%</b>	<b>1.0%</b>	<b>1.2%</b>	<b>1.2%</b>	<b>1.2%</b>	<b>1.2%</b>

Licensee Comments:

4Q/03: Planned unavailability for TDADF 2-01 was corrected from 1.7 hours to 21.7 hours based on unavailability during startup from 2RF07. This correction of data did not affect the PI color or the PI value for the quarter.

### Safety System Unavailability, Residual Heat Removal System



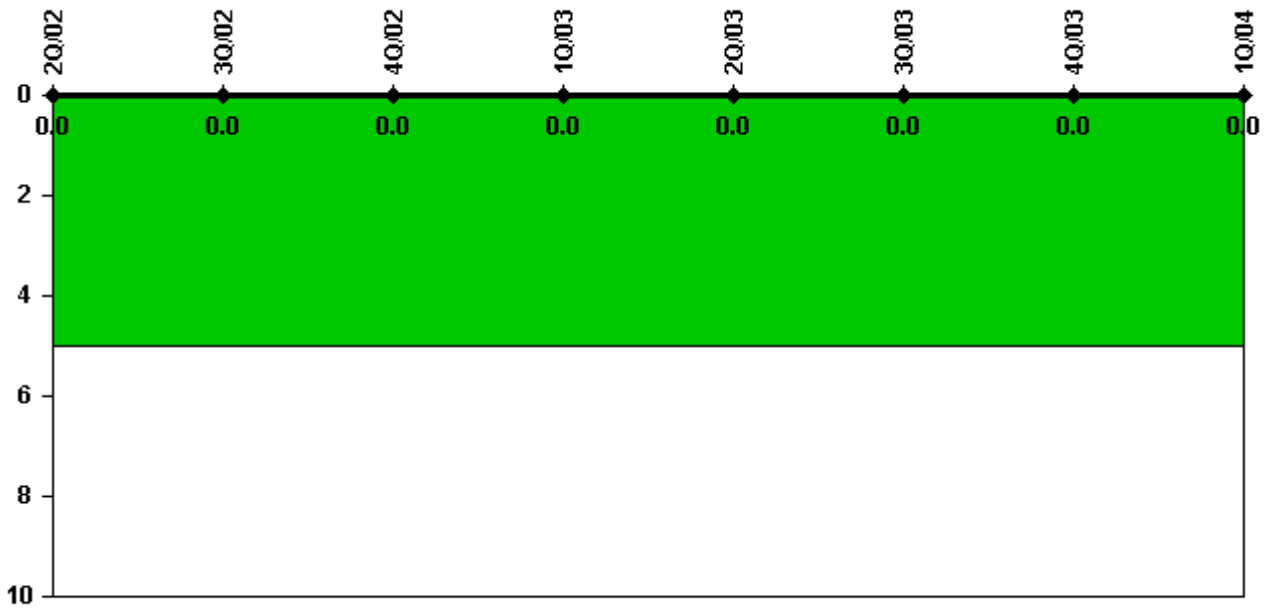
Thresholds: White > 1.5% Yellow > 5.0% Red > 10.0%

#### Notes

Safety System Unavailability, Residual Heat Removal System	2Q/02	3Q/02	4Q/02	1Q/03	2Q/03	3Q/03	4Q/03	1Q/04
<b>Train 1</b>								
Planned unavailable hours	36.70	21.70	3.50	16.40	34.90	26.50	4.60	42.40
Unplanned unavailable hours	0	0	0	0	28.80	6.10	0.60	0
Fault exposure hours	0	0	0	0	0	0	0	0
Effective Reset hours	0	0	0	0	0	0	0	0
Required hours	2183.00	2208.00	2209.00	2160.00	2183.00	2208.00	2209.00	2184.00
<b>Train 2</b>								
Planned unavailable hours	1.70	16.60	6.40	22.10	47.90	31.00	5.40	33.60
Unplanned unavailable hours	0	0	0	0	0.80	0.60	0	0
Fault exposure hours	0	0	0	0	0	0	0	0
Effective Reset hours	0	0	0	0	0	0	0	0
Required hours	2183.00	2208.00	2209.00	2160.00	2183.00	2208.00	2209.00	2184.00
<b>Indicator value</b>	<b>0.7%</b>	<b>0.8%</b>	<b>0.8%</b>	<b>0.8%</b>	<b>1.0%</b>	<b>1.1%</b>	<b>1.1%</b>	<b>1.1%</b>

Licensee Comments: none

### Safety System Functional Failures (PWR)



Thresholds: White > 5.0

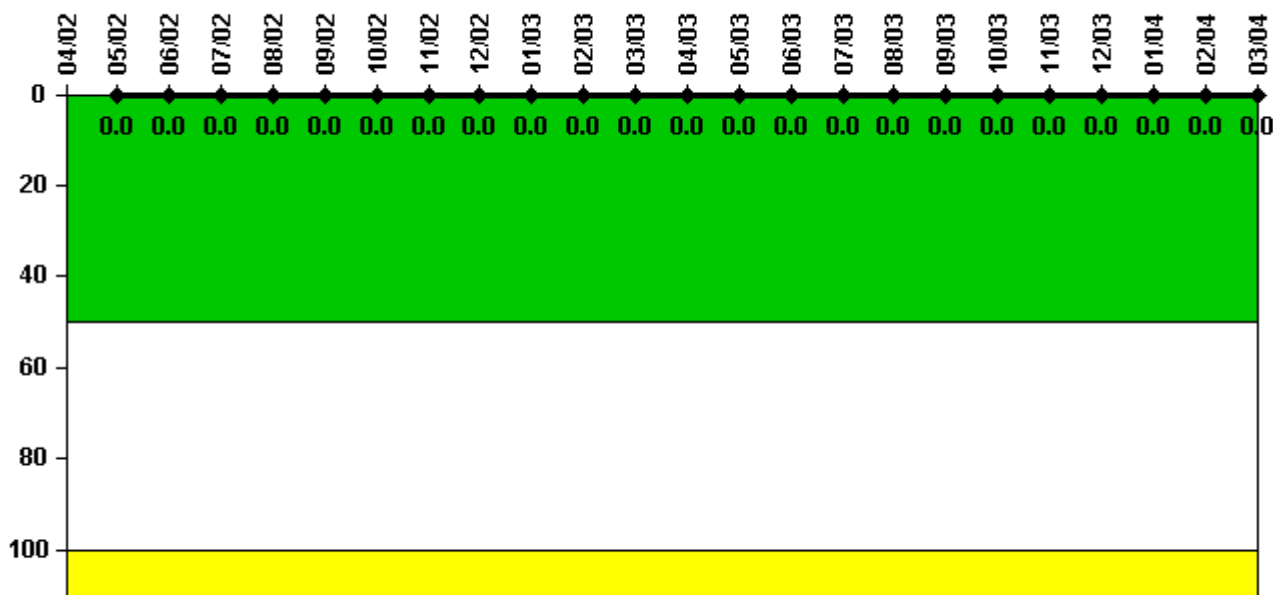
#### Notes

Safety System Functional Failures (PWR)	2Q/02	3Q/02	4Q/02	1Q/03	2Q/03	3Q/03	4Q/03	1Q/04
Safety System Functional Failures	0	0	0	0	0	0	0	0
Indicator value	0	0	0	0	0	0	0	0

Licensee Comments: none



### Reactor Coolant System Activity



Thresholds: White > 50.0 Yellow > 100.0

#### Notes

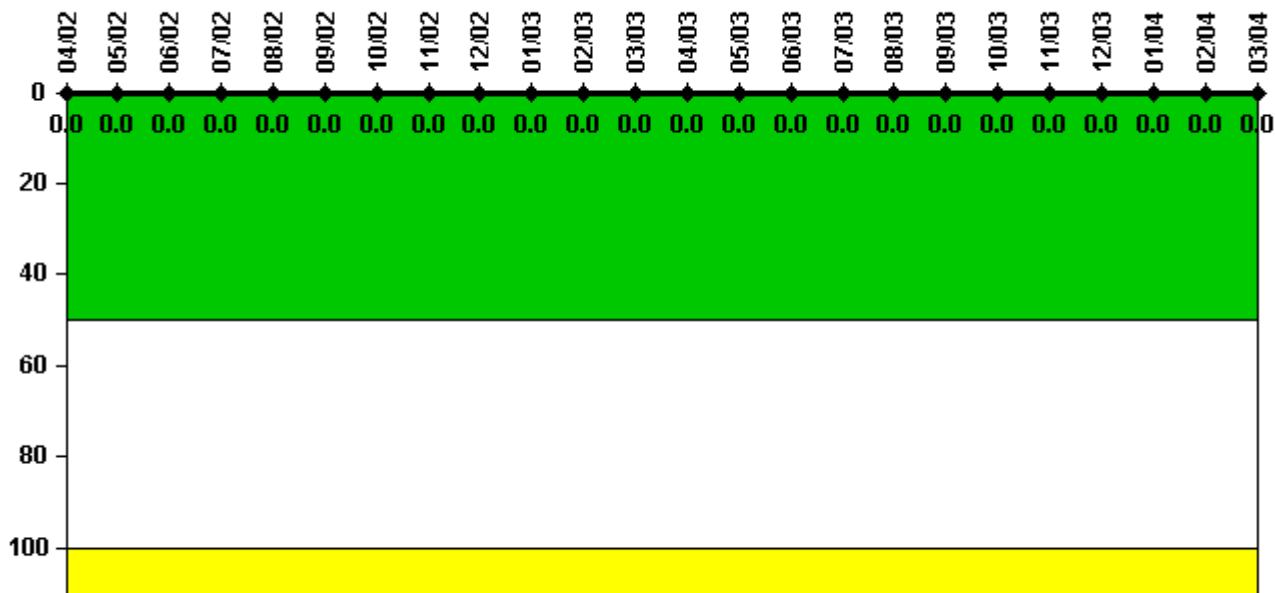
Reactor Coolant System Activity	4/02	5/02	6/02	7/02	8/02	9/02	10/02	11/02	12/02	1/03	2/03	3/03
Maximum activity	N/A	0.000086	0.000128	0.000108	0.000120	0.000115	0.000133	0.000124	0.000149	0.000142	0.000127	0.000151
Technical specification limit	0.5	0.5	0.5	0.5	0.5	0.5	0.5	0.5	0.5	0.5	0.5	0.5
Indicator value	N/A	0	0	0	0	0	0	0	0	0	0	0

Reactor Coolant System Activity	4/03	5/03	6/03	7/03	8/03	9/03	10/03	11/03	12/03	1/04	2/04	3/04
Maximum activity	0.000156	0.000179	0.000143	0.000140	0.000150	0.000162	0.000125	0.000167	0.000169	0.000167	0.000208	0.000179
Technical specification limit	0.5	0.5	0.5	0.5	0.5	0.5	0.5	0.5	0.5	0.5	0.5	0.5
Indicator value	0	0	0	0	0	0	0	0	0	0	0	0

Licensee Comments: none

### Reactor Coolant System Leakage



Thresholds: White > 50.0 Yellow > 100.0

#### Notes

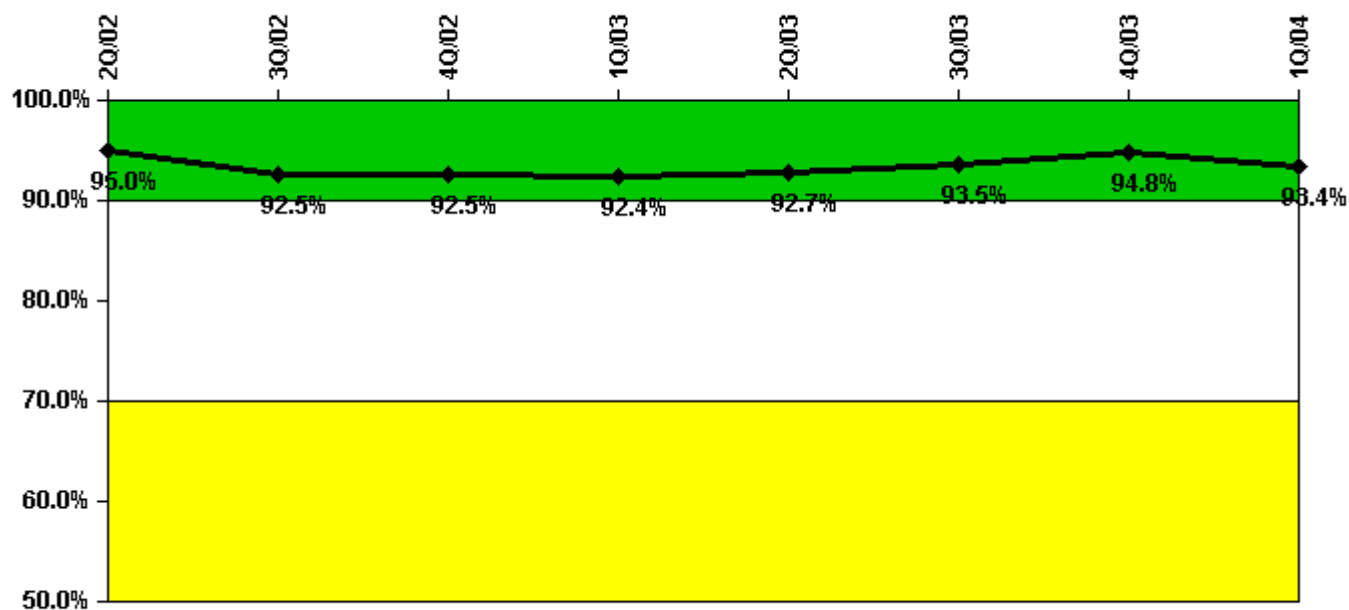
Reactor Coolant System Leakage	4/02	5/02	6/02	7/02	8/02	9/02	10/02	11/02	12/02	1/03	2/03	3/03
Maximum leakage	0	0	0	0	0	0	0	0	0	0	0	0
Technical specification limit	10.0	10.0	10.0	10.0	10.0	10.0	10.0	10.0	10.0	10.0	10.0	10.0
Indicator value	0	0	0	0	0	0	0	0	0	0	0	0

Reactor Coolant System Leakage	4/03	5/03	6/03	7/03	8/03	9/03	10/03	11/03	12/03	1/04	2/04	3/04
Maximum leakage	0	0	0	0	0	0	0	0	0	0	0	0
Technical specification limit	10.0	10.0	10.0	10.0	10.0	10.0	10.0	10.0	10.0	10.0	10.0	10.0
Indicator value	0	0	0	0	0	0	0	0	0	0	0	0

Licensee Comments: none

### Drill/Exercise Performance



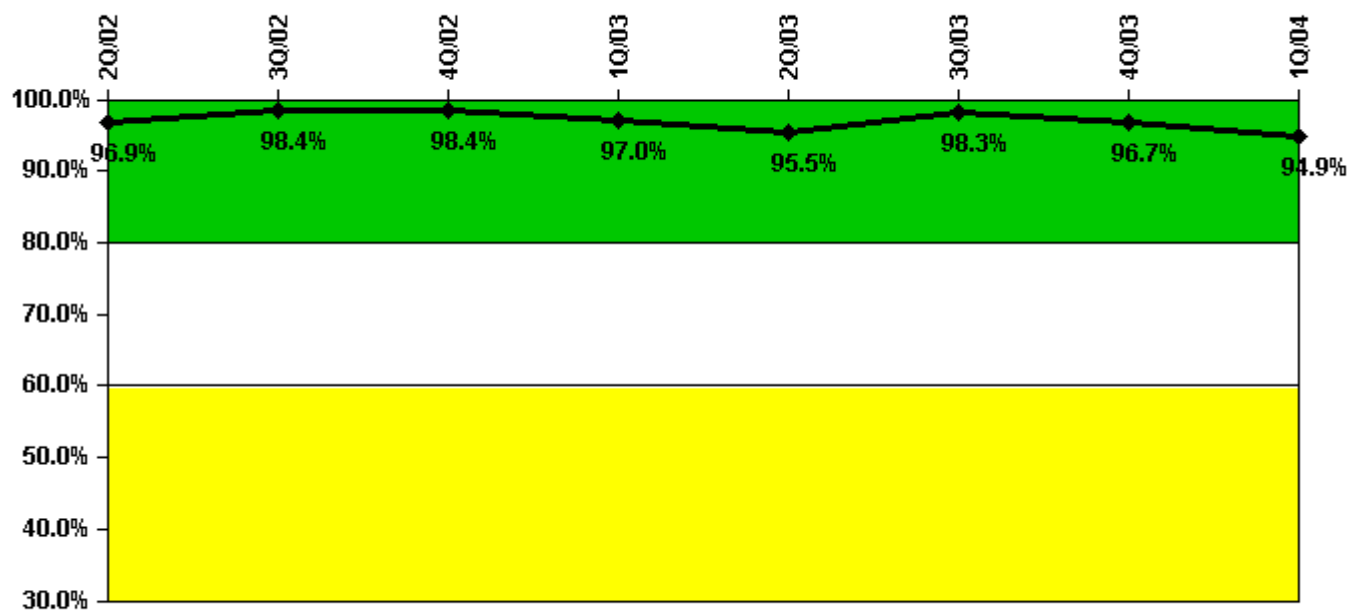
Thresholds: White < 90.0% Yellow < 70.0%

### Notes

Drill/Exercise Performance	2Q/02	3Q/02	4Q/02	1Q/03	2Q/03	3Q/03	4Q/03	1Q/04
Successful opportunities	3.0	40.0	0	9.0	6.0	52.0	12.0	6.0
Total opportunities	4.0	42.0	0	10.0	6.0	54.0	12.0	9.0
Indicator value	95.0%	92.5%	92.5%	92.4%	92.7%	93.5%	94.8%	93.4%

Licensee Comments: none

### ERO Drill Participation



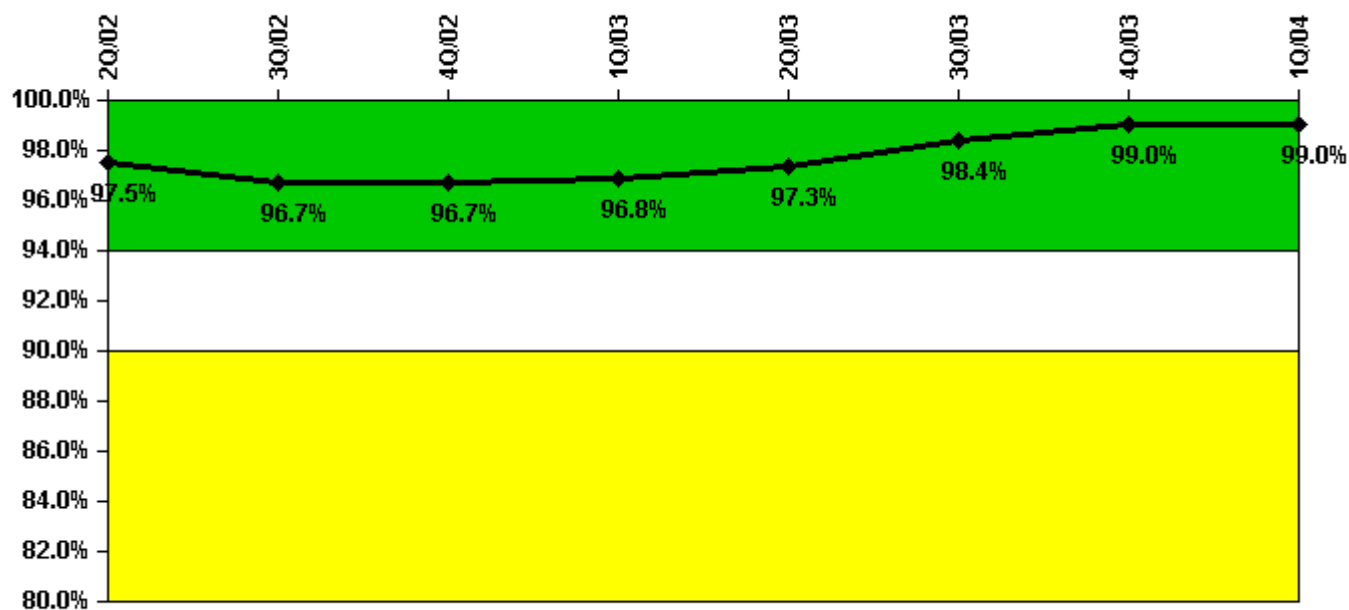
Thresholds: White < 80.0% Yellow < 60.0%

#### Notes

ERO Drill Participation	2Q/02	3Q/02	4Q/02	1Q/03	2Q/03	3Q/03	4Q/03	1Q/04
Participating Key personnel	62.0	63.0	63.0	64.0	64.0	59.0	58.0	56.0
Total Key personnel	64.0	64.0	64.0	66.0	67.0	60.0	60.0	59.0
Indicator value	96.9%	98.4%	98.4%	97.0%	95.5%	98.3%	96.7%	94.9%

Licensee Comments: none

### Alert & Notification System



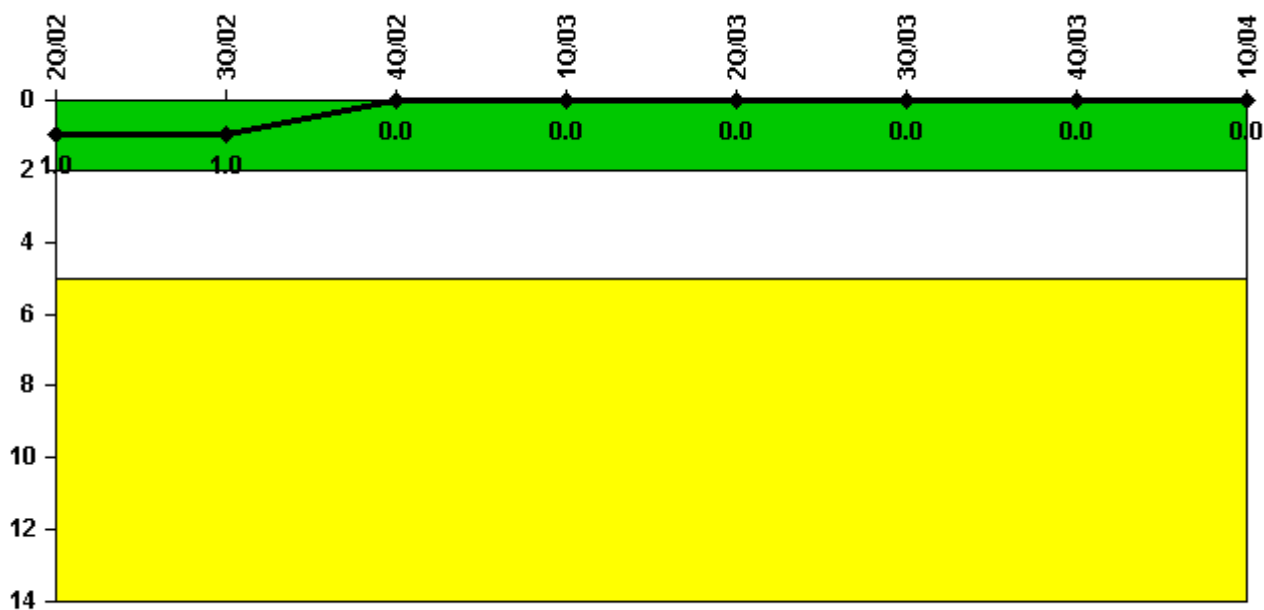
Thresholds: White < 94.0% Yellow < 90.0%

#### Notes

Alert & Notification System	2Q/02	3Q/02	4Q/02	1Q/03	2Q/03	3Q/03	4Q/03	1Q/04
Successful siren-tests	193	188	194	203	206	206	206	206
Total sirens-tests	198	198	201	207	207	207	208	210
Indicator value	97.5%	96.7%	96.7%	96.8%	97.3%	98.4%	99.0%	99.0%

Licensee Comments: none

### Occupational Exposure Control Effectiveness



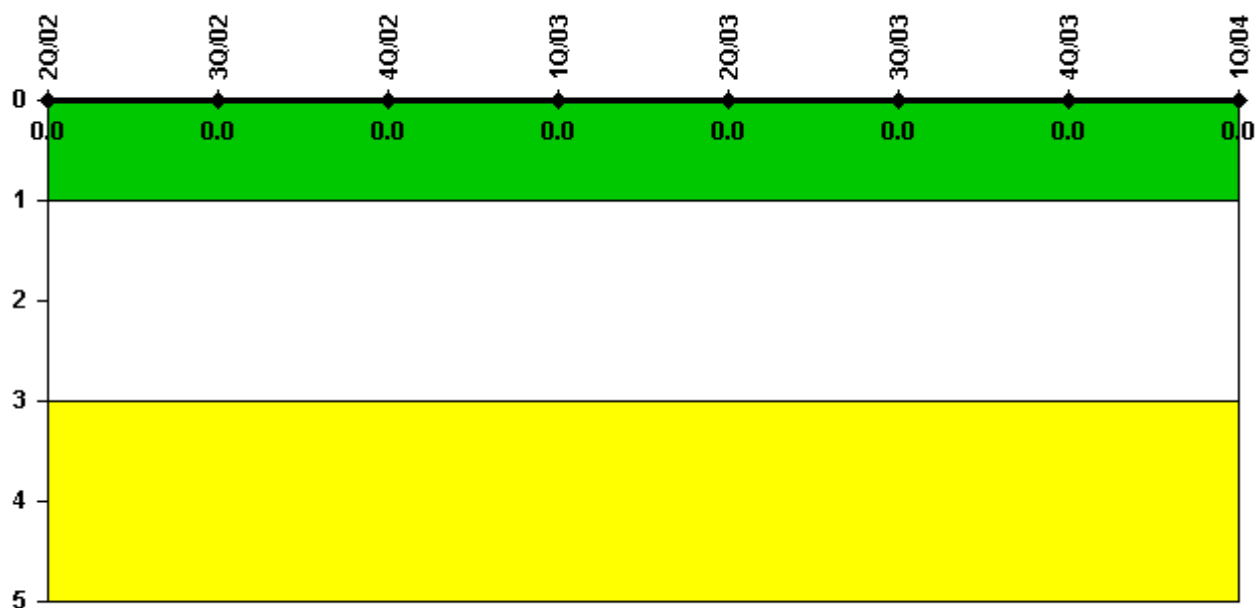
Thresholds: White > 2.0 Yellow > 5.0

#### Notes

Occupational Exposure Control Effectiveness	2Q/02	3Q/02	4Q/02	1Q/03	2Q/03	3Q/03	4Q/03	1Q/04
High radiation area occurrences	0	0	0	0	0	0	0	0
Very high radiation area occurrences	0	0	0	0	0	0	0	0
Unintended exposure occurrences	0	0	0	0	0	0	0	0
<b>Indicator value</b>	<b>1</b>	<b>1</b>	<b>0</b>	<b>0</b>	<b>0</b>	<b>0</b>	<b>0</b>	<b>0</b>

Licensee Comments: none

### RETS/ODCM Radiological Effluent



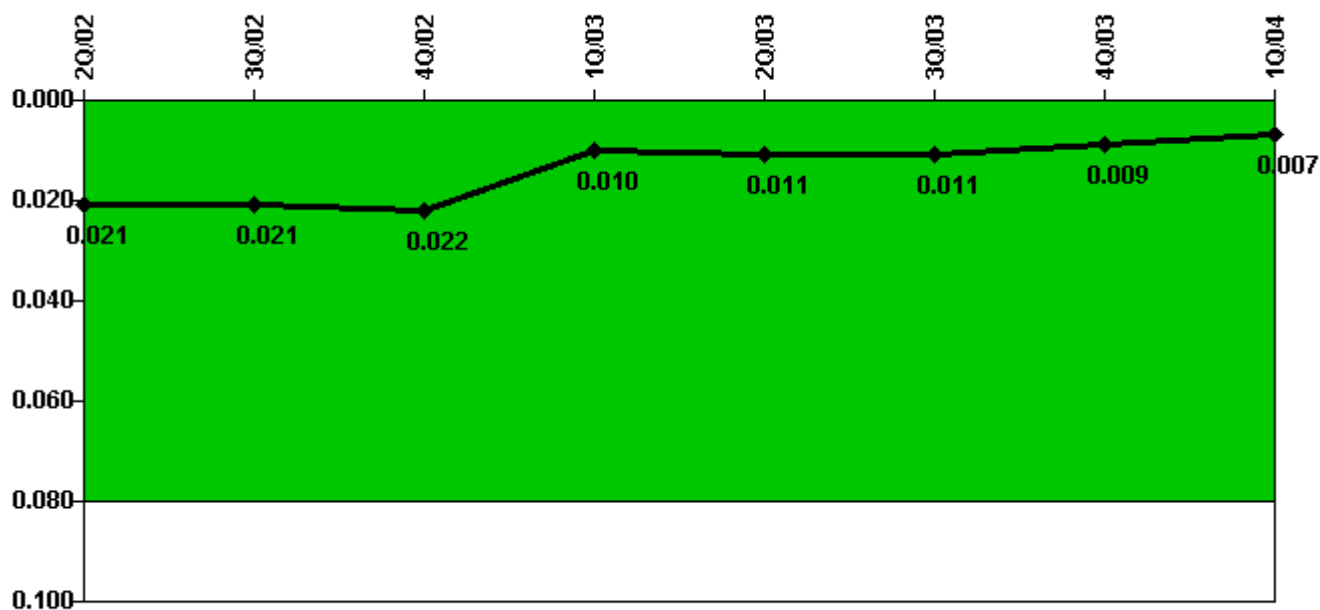
Thresholds: White > 1.0 Yellow > 3.0

#### Notes

RETS/ODCM Radiological Effluent	2Q/02	3Q/02	4Q/02	1Q/03	2Q/03	3Q/03	4Q/03	1Q/04
RETS/ODCM occurrences	0	0	0	0	0	0	0	0
Indicator value	0	0	0	0	0	0	0	0

Licensee Comments: none

### Protected Area Security Performance Index



Thresholds: White > 0.080

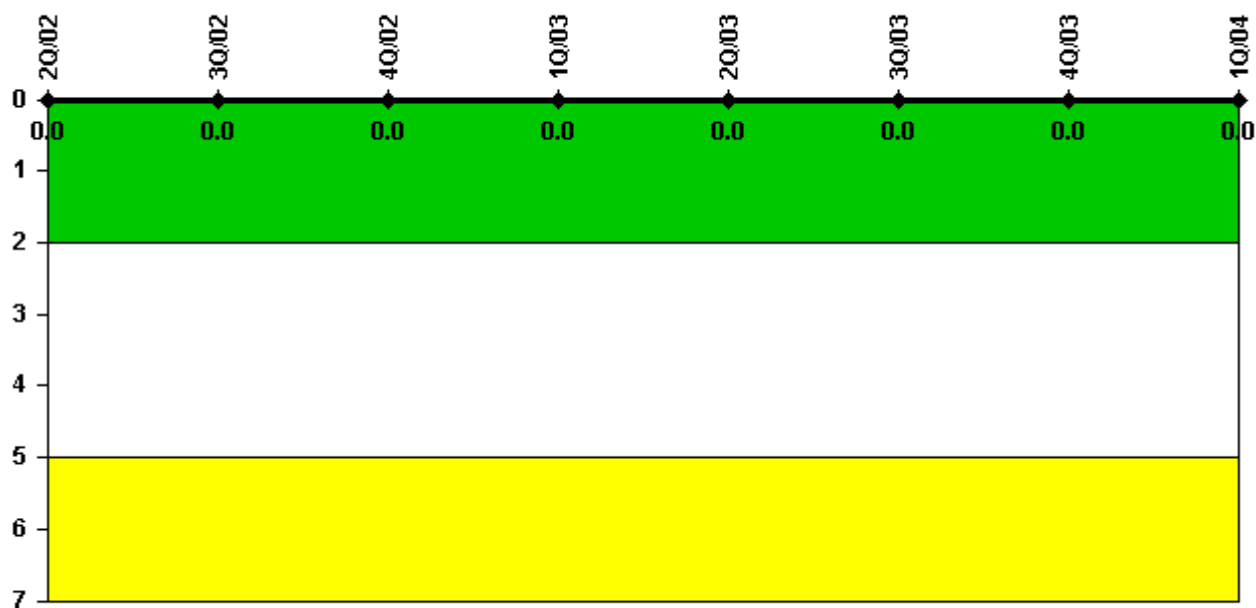
#### Notes

Protected Area Security Performance Index	2Q/02	3Q/02	4Q/02	1Q/03	2Q/03	3Q/03	4Q/03	1Q/04
IDS compensatory hours	40.90	71.50	81.80	70.10	73.00	54.40	24.50	20.60
CCTV compensatory hours	10.2	8.6	21.0	45.6	20.0	4.4	7.9	37.2
IDS normalization factor	2.15	2.15	2.15	2.15	2.15	2.15	2.15	2.15
CCTV normalization factor	1.5	1.5	1.5	1.5	1.5	1.5	1.5	1.5
<b>Index Value</b>	<b>0.021</b>	<b>0.021</b>	<b>0.022</b>	<b>0.010</b>	<b>0.011</b>	<b>0.011</b>	<b>0.009</b>	<b>0.007</b>

Licensee Comments: none



### Personnel Screening Program



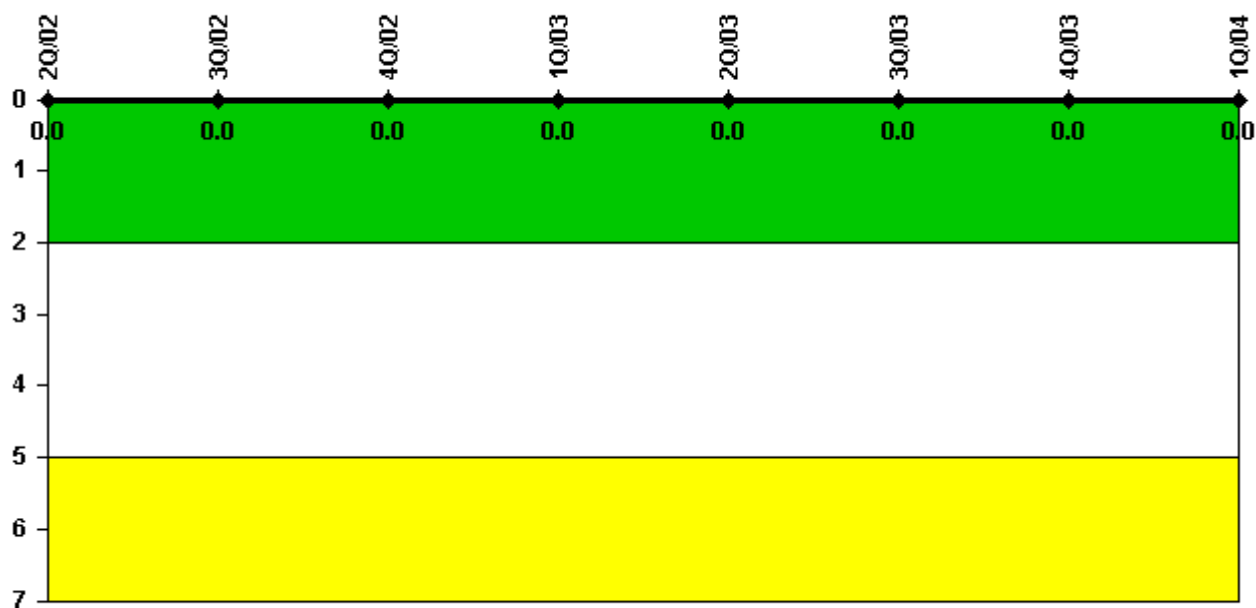
Thresholds: White > 2.0 Yellow > 5.0

#### Notes

Personnel Screening Program	2Q/02	3Q/02	4Q/02	1Q/03	2Q/03	3Q/03	4Q/03	1Q/04
Program failures	0	0	0	0	0	0	0	0
<b>Indicator value</b>	<b>0</b>	<b>0</b>	<b>0</b>	<b>0</b>	<b>0</b>	<b>0</b>	<b>0</b>	<b>0</b>

Licensee Comments: none

### FFD/Personnel Reliability



Thresholds: White > 2.0 Yellow > 5.0

#### Notes

FFD/Personnel Reliability	2Q/02	3Q/02	4Q/02	1Q/03	2Q/03	3Q/03	4Q/03	1Q/04
Program Failures	0	0	0	0	0	0	0	0
<b>Indicator value</b>	<b>0</b>	<b>0</b>	<b>0</b>	<b>0</b>	<b>0</b>	<b>0</b>	<b>0</b>	<b>0</b>

Licensee Comments: none

▲ [PI Summary](#) | [Inspection Findings Summary](#) | [Reactor Oversight Process](#)

Last Modified: April 22, 2004