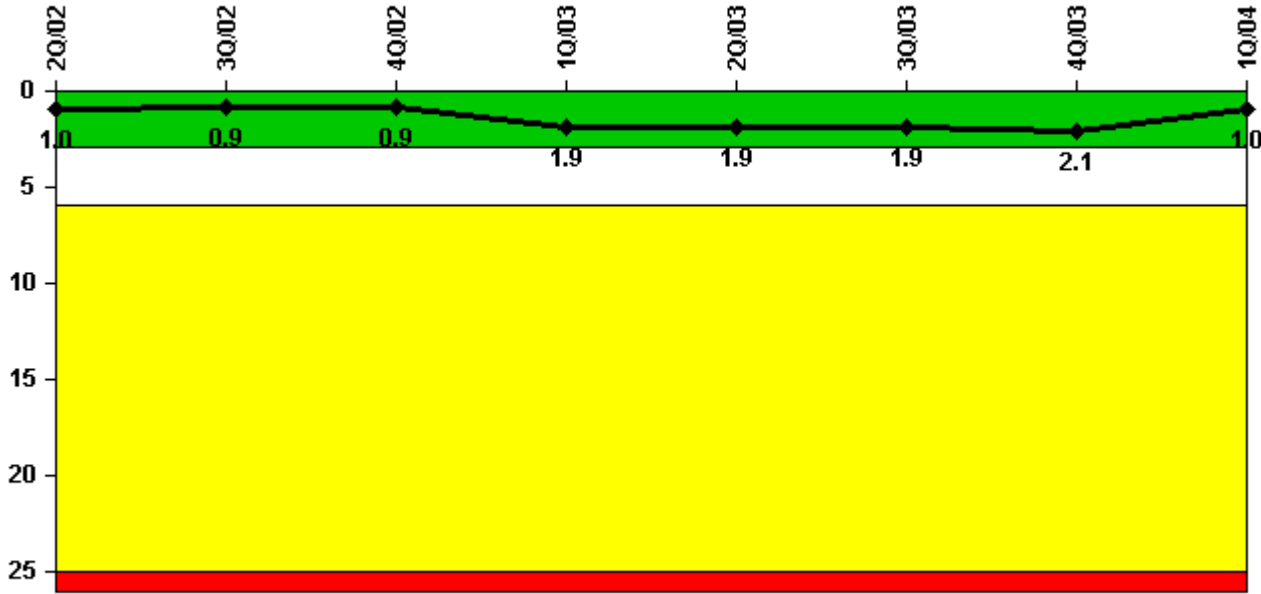


# D.C. Cook 1

## 1Q/2004 Performance Indicators

Licensee's General Comments: none

### Unplanned Scrams per 7000 Critical Hrs



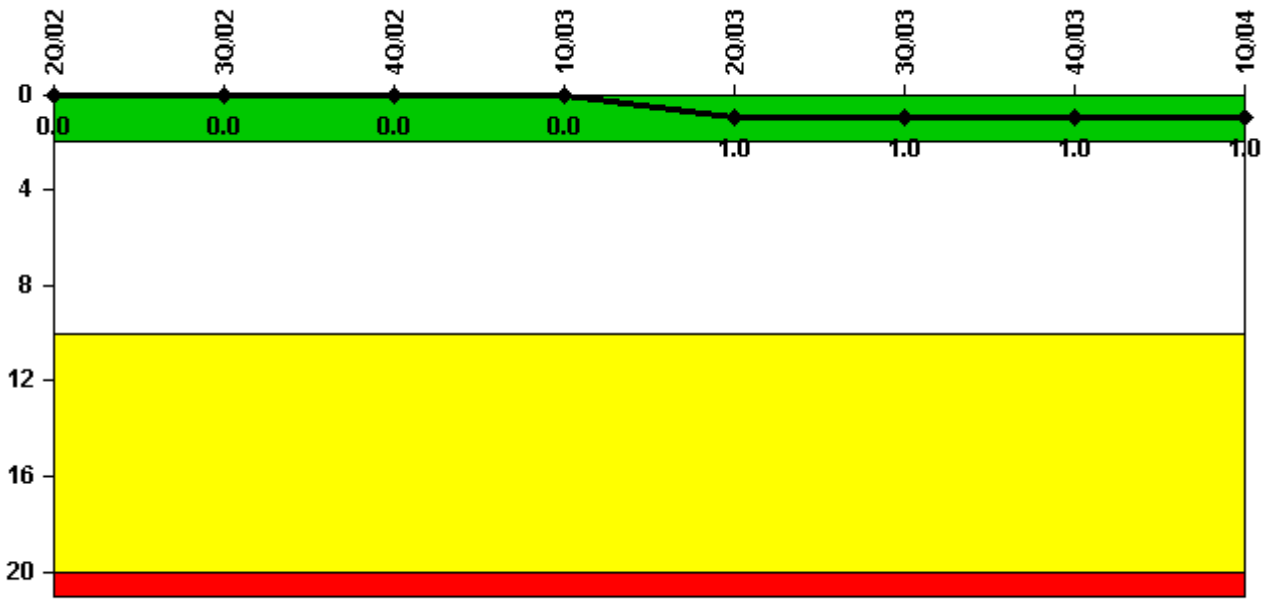
Thresholds: White > 3.0 Yellow > 6.0 Red > 25.0

### Notes

Unplanned Scrams per 7000 Critical Hrs	2Q/02	3Q/02	4Q/02	1Q/03	2Q/03	3Q/03	4Q/03	1Q/04
Unplanned scrams	1.0	0	0	1.0	1.0	0	0	0
Critical hours	1251.0	2208.0	2209.0	1695.2	1370.7	2208.0	1277.7	2140.5
Indicator value	1.0	0.9	0.9	1.9	1.9	1.9	2.1	1.0

Licensee Comments: none

### Scrams with Loss of Normal Heat Removal



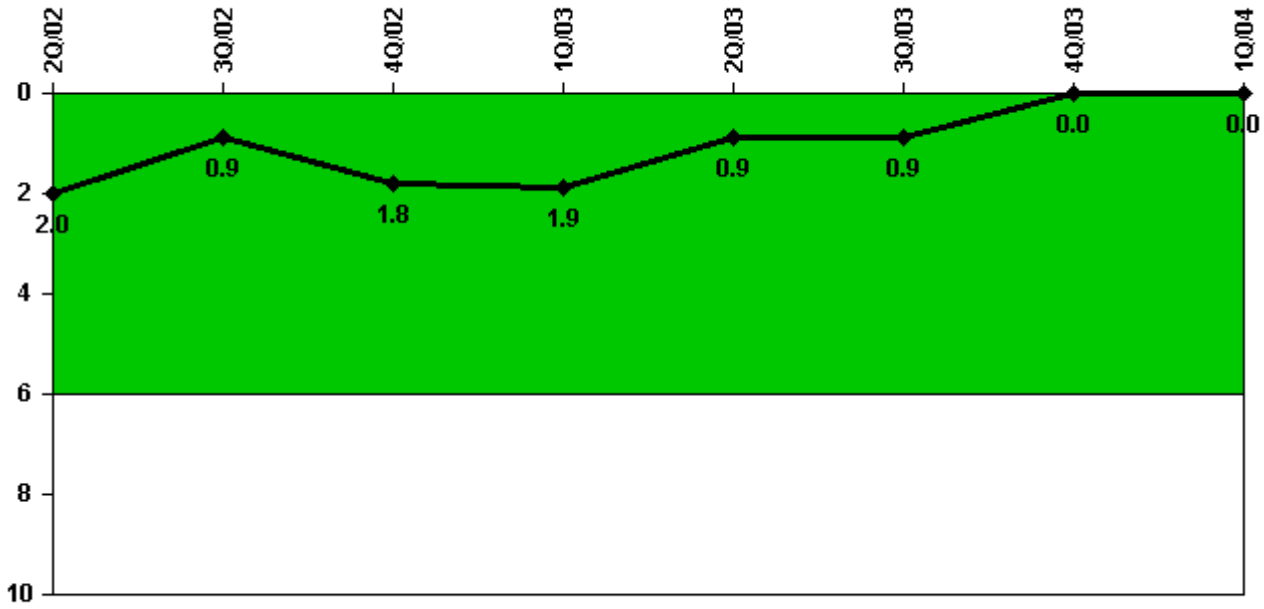
Thresholds: White > 2.0 Yellow > 10.0 Red > 20.0

#### Notes

Scrams with Loss of Normal Heat Removal	2Q/02	3Q/02	4Q/02	1Q/03	2Q/03	3Q/03	4Q/03	1Q/04
Scrams	0	0	0	0	1.0	0	0	0
Indicator value	0	0	0	0	1.0	1.0	1.0	1.0

Licensee Comments: none

### Unplanned Power Changes per 7000 Critical Hrs



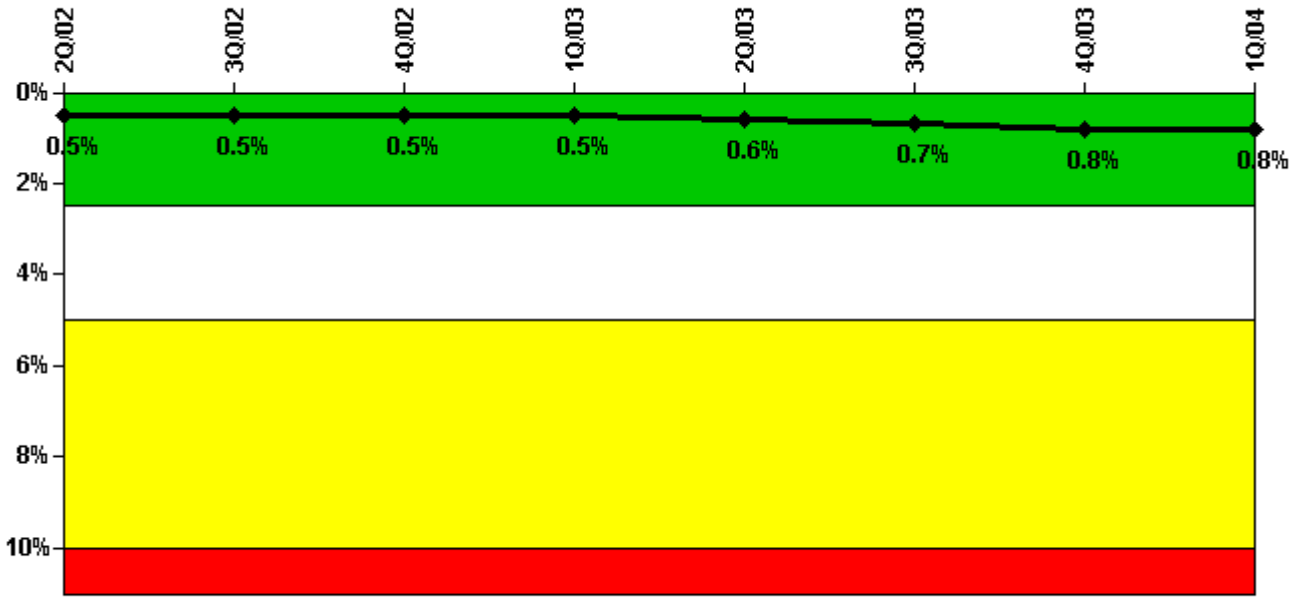
Thresholds: White > 6.0

#### Notes

Unplanned Power Changes per 7000 Critical Hrs	2Q/02	3Q/02	4Q/02	1Q/03	2Q/03	3Q/03	4Q/03	1Q/04
Unplanned power changes	1.0	0	1.0	0	0	0	0	0
Critical hours	1251.0	2208.0	2209.0	1695.2	1370.7	2208.0	1277.7	2140.5
Indicator value	2.0	0.9	1.8	1.9	0.9	0.9	0	0

Licensee Comments: none

### Safety System Unavailability, Emergency AC Power



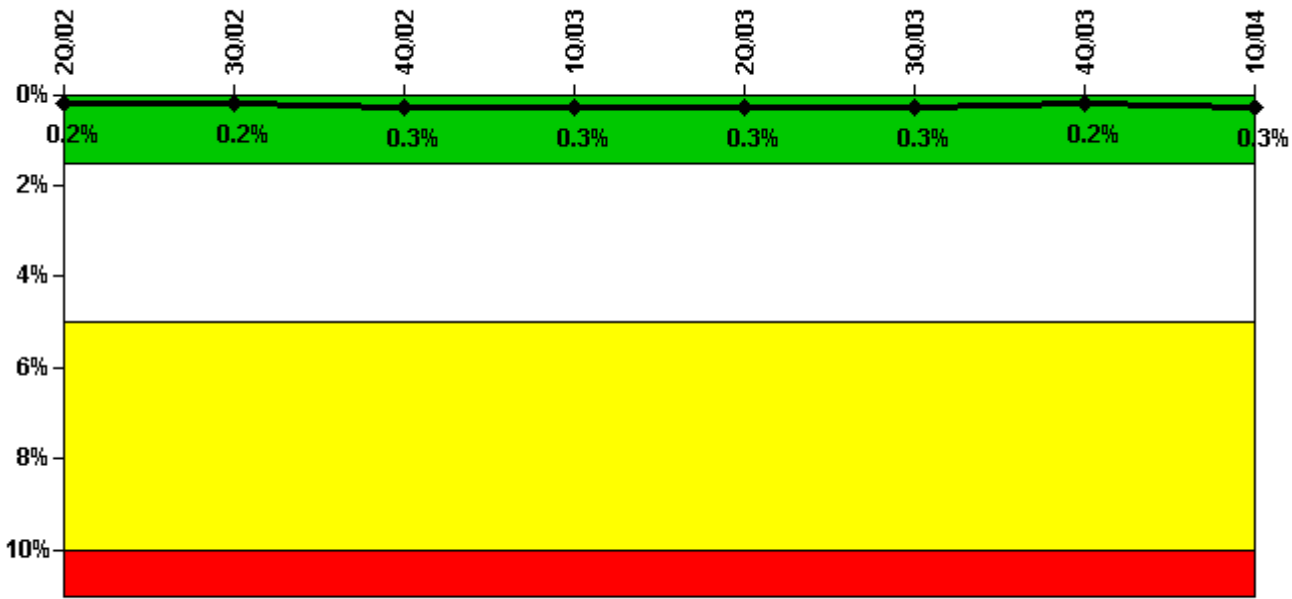
Thresholds: White > 2.5% Yellow > 5.0% Red > 10.0%

#### Notes

Safety System Unavailability, Emergency AC Power	2Q/02	3Q/02	4Q/02	1Q/03	2Q/03	3Q/03	4Q/03	1Q/04
<b>Train 1</b>								
Planned unavailable hours	2.20	1.50	18.10	16.14	0.42	27.81	13.82	27.21
Unplanned unavailable hours	25.90	0	0	0	0	13.17	0	0
Fault exposure hours	1.00	0	0	0	0	0	0	0
Effective Reset hours	0	0	0	0	0	0	0	0
Required hours	1531.15	2208.00	2209.00	2160.00	1585.00	2208.00	1732.24	2184.00
<b>Train 2</b>								
Planned unavailable hours	5.60	0.55	17.90	20.23	44.83	18.61	0.66	20.83
Unplanned unavailable hours	0	0	0	0	0	0	0	0
Fault exposure hours	0	0	0	0	0	0	0	0
Effective Reset hours	0	0	0	0	0	0	0	0
Required hours	1431.65	2208.00	2209.00	2160.00	2183.00	2208.00	1891.40	2184.00
<b>Indicator value</b>	<b>0.5%</b>	<b>0.5%</b>	<b>0.5%</b>	<b>0.5%</b>	<b>0.6%</b>	<b>0.7%</b>	<b>0.8%</b>	<b>0.8%</b>

Licensee Comments: none

### Safety System Unavailability, High Pressure Injection System (HPSI)



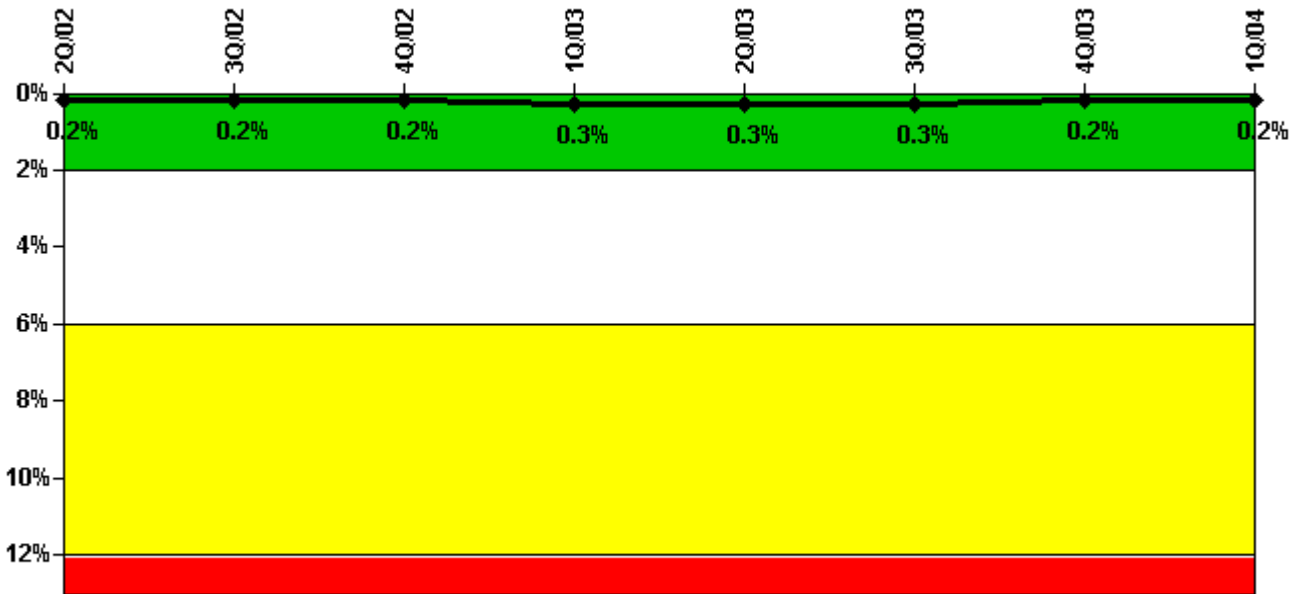
Thresholds: White > 1.5% Yellow > 5.0% Red > 10.0%

#### Notes

Safety System Unavailability, High Pressure Injection System (HPSI)	2Q/02	3Q/02	4Q/02	1Q/03	2Q/03	3Q/03	4Q/03	1Q/04
<b>Train 1</b>								
Planned unavailable hours	5.58	0	49.10	11.17	0	7.82	3.37	2.93
Unplanned unavailable hours	0	2.82	0	0	0	0	0	0
Fault exposure hours	0	0	0	0	0	0	0	0
Effective Reset hours	0	0	0	0	0	0	0	0
Required hours	1431.56	2208.00	2209.00	1804.95	1433.97	2208.00	1414.58	2159.37
<b>Train 2</b>								
Planned unavailable hours	8.82	0	6.22	1.75	10.00	0	0	18.35
Unplanned unavailable hours	0	0	0	0	0	0	0	0
Fault exposure hours	0	0	0	0	0	0	0	0
Effective Reset hours	0	0	0	0	0	0	0	0
Required hours	1386.43	2208.00	2209.00	1866.13	1499.10	2208.00	1339.27	2170.33
<b>Train 3</b>								
Planned unavailable hours	9.33	7.00	0	0	0	0	0	5.50
Unplanned unavailable hours	0	0	2.92	0	0	0	0	0
Fault exposure hours	0	0	0	0	0	0	0	0
Effective Reset hours	0	0	0	0	0	0	0	0
Required hours	1386.43	2208.00	2209.00	1804.95	1433.97	2208.00	1339.27	2159.37
<b>Train 4</b>								
Planned unavailable hours	3.78	0	0	6.75	0	0	0	3.67
Unplanned unavailable hours	0	0	0	0	0	0	0	0
Fault exposure hours	0	0	0	0	0	0	0	0
Effective Reset hours	0	0	0	0	0	0	0	0
Required hours	1386.43	2208.00	2209.00	1804.95	1419.20	2208.00	1339.27	2159.37
<b>Indicator value</b>	<b>0.2%</b>	<b>0.2%</b>	<b>0.3%</b>	<b>0.3%</b>	<b>0.3%</b>	<b>0.3%</b>	<b>0.2%</b>	<b>0.3%</b>

Licensee Comments: none

### Safety System Unavailability, Heat Removal System (AFW)



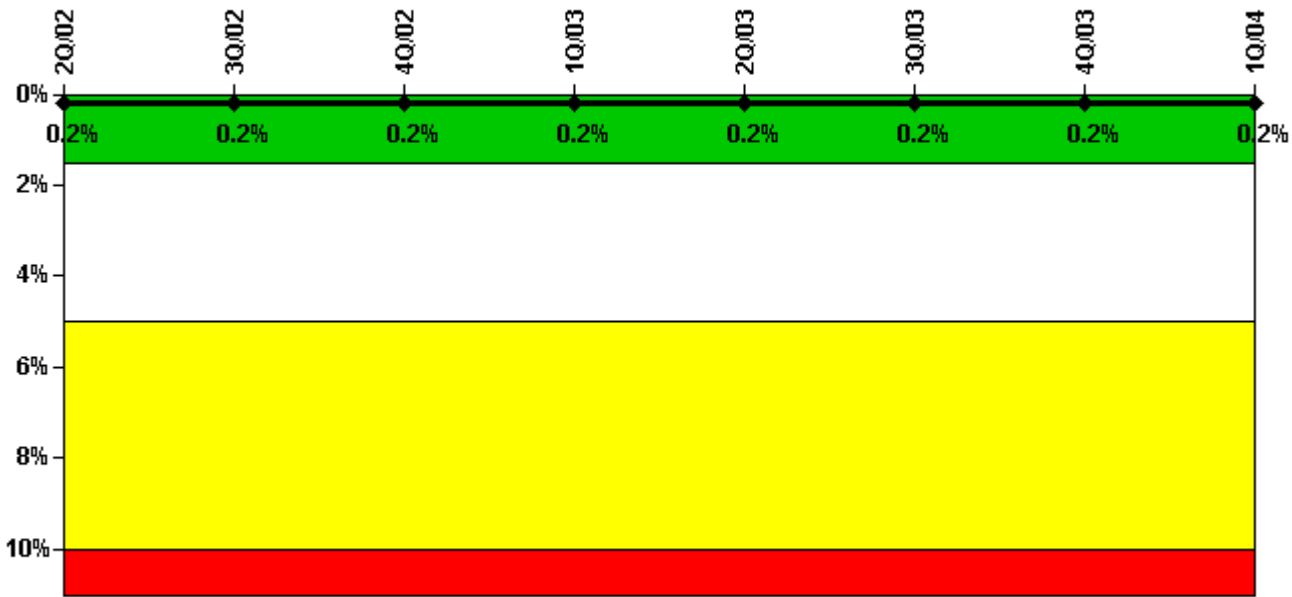
Thresholds: White > 2.0% Yellow > 6.0% Red > 12.0%

#### Notes

Safety System Unavailability, Heat Removal System (AFW)	2Q/02	3Q/02	4Q/02	1Q/03	2Q/03	3Q/03	4Q/03	1Q/04
<b>Train 1</b>								
Planned unavailable hours	0	0	2.67	0	19.15	5.03	0	0
Unplanned unavailable hours	0	0	0	0	0	0	5.42	0
Fault exposure hours	0	0	0	0	0	0	0	0
Effective Reset hours	0	0	0	0	0	0	0	0
Required hours	1357.71	2208.00	2209.00	1804.95	1419.20	2008.00	1339.27	2159.37
<b>Train 2</b>								
Planned unavailable hours	6.55	10.18	0	9.63	0	0	0	0
Unplanned unavailable hours	0	0	0	0	0	0	0.05	0
Fault exposure hours	0	0	0	0	0	0	0	0
Effective Reset hours	0	0	0	0	0	0	0	0
Required hours	1357.70	2208.00	2209.00	1804.95	1419.20	2208.00	1339.27	2159.37
<b>Train 3</b>								
Planned unavailable hours	8.88	12.75	0	13.12	0	0	0	8.55
Unplanned unavailable hours	0	0	0	13.03	0	0	0.85	0
Fault exposure hours	0	0	0	0	0	0	0	0
Effective Reset hours	0	0	0	0	0	0	0	0
Required hours	1357.70	2208.00	2209.00	1804.95	1419.20	2208.00	1339.27	2159.37
<b>Indicator value</b>	<b>0.2%</b>	<b>0.2%</b>	<b>0.2%</b>	<b>0.3%</b>	<b>0.3%</b>	<b>0.3%</b>	<b>0.2%</b>	<b>0.2%</b>

Licensee Comments: none

### Safety System Unavailability, Residual Heat Removal System



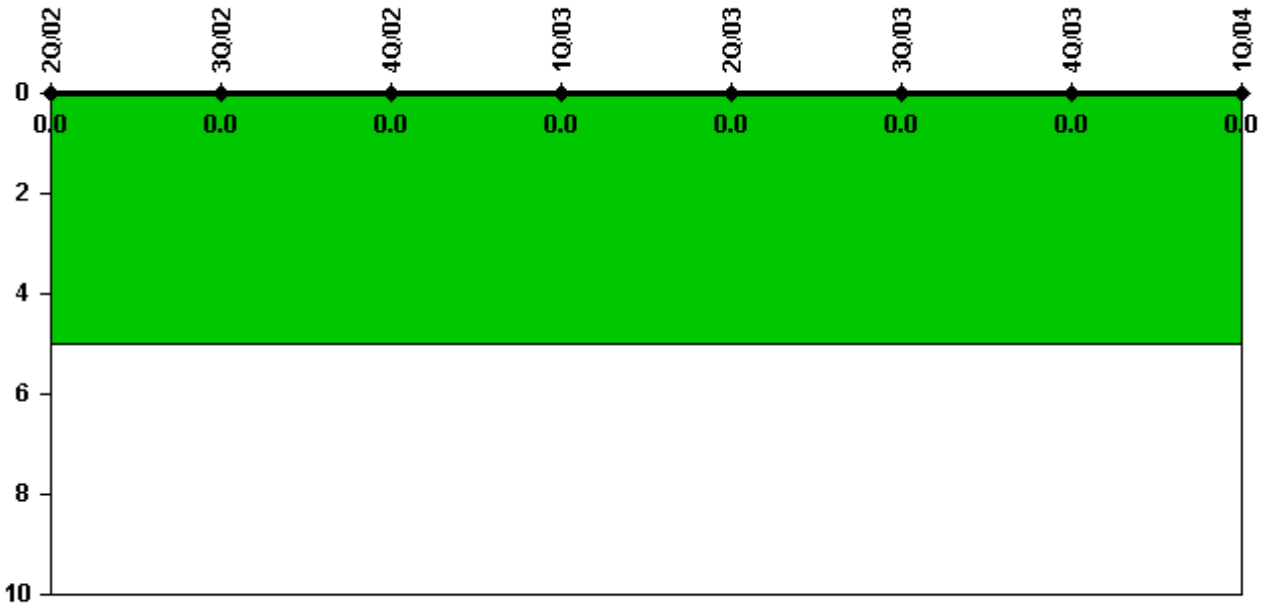
Thresholds: White > 1.5% Yellow > 5.0% Red > 10.0%

#### Notes

Safety System Unavailability, Residual Heat Removal System	2Q/02	3Q/02	4Q/02	1Q/03	2Q/03	3Q/03	4Q/03	1Q/04
<b>Train 1</b>								
Planned unavailable hours	11.98	7.42	0	0.75	0	12.30	0	8.93
Unplanned unavailable hours	0	0	0	0	0	0	0	0
Fault exposure hours	0	0	0	0	0	0	0	0
Effective Reset hours	0	0	0	0	0	0	0	0
Required hours	1962.60	2208.00	2209.00	2160.00	2183.00	2208.00	1949.08	2184.00
<b>Train 2</b>								
Planned unavailable hours	4.03	7.38	8.85	0	0	12.82	0	0
Unplanned unavailable hours	0	0	0	0	0	0	0	0
Fault exposure hours	0	0	0	0	0	0	0	0
Effective Reset hours	0	0	0	0	0	0	0	0
Required hours	1962.60	2208.00	2209.00	2160.00	2183.00	2208.00	1949.08	2184.00
<b>Indicator value</b>	<b>0.2%</b>	<b>0.2%</b>	<b>0.2%</b>	<b>0.2%</b>	<b>0.2%</b>	<b>0.2%</b>	<b>0.2%</b>	<b>0.2%</b>

Licensee Comments: none

### Safety System Functional Failures (PWR)



Thresholds: White > 5.0

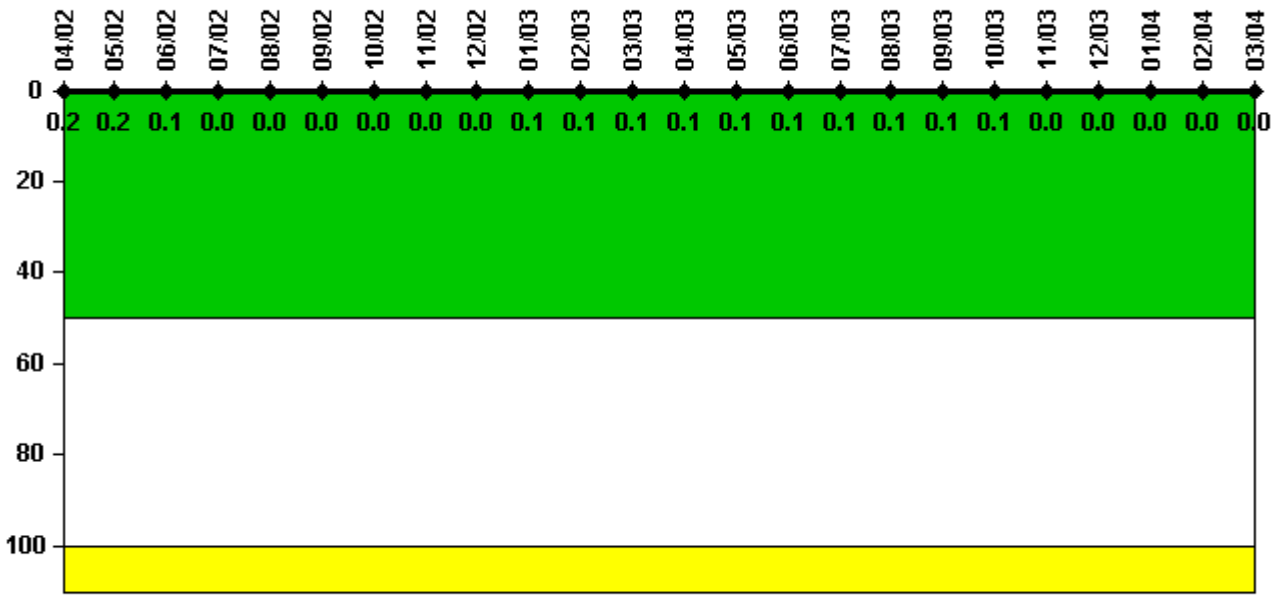
#### Notes

Safety System Functional Failures (PWR)	2Q/02	3Q/02	4Q/02	1Q/03	2Q/03	3Q/03	4Q/03	1Q/04
Safety System Functional Failures	0	0	0	0	0	0	0	0
Indicator value	0	0	0	0	0	0	0	0

Licensee Comments: none



### Reactor Coolant System Activity



Thresholds: White > 50.0 Yellow > 100.0

### Notes

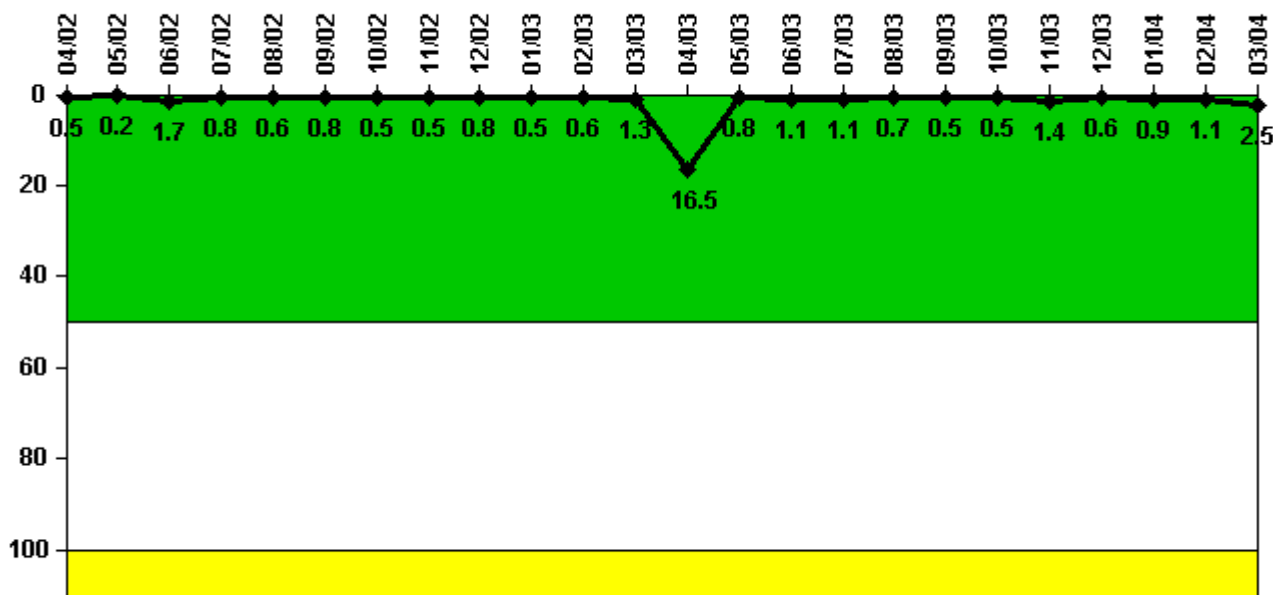
Reactor Coolant System Activity	4/02	5/02	6/02	7/02	8/02	9/02	10/02	11/02	12/02	1/03	2/03	3/03
Maximum activity	0.002250	0.002390	0.000824	0.000447	0.000457	0.000457	0.000470	0.000498	0.000492	0.000506	0.000949	0.000898
Technical specification limit	1.0	1.0	1.0	1.0	1.0	1.0	1.0	1.0	1.0	1.0	1.0	1.0
Indicator value	0.2	0.2	0.1	0	0	0	0	0	0	0.1	0.1	0.1

Reactor Coolant System Activity	4/03	5/03	6/03	7/03	8/03	9/03	10/03	11/03	12/03	1/04	2/04	3/04
Maximum activity	0.000881	0.000546	0.000910	0.001110	0.000936	0.000834	0.000867	0.000234	0.000457	0.000429	0.000446	0.000467
Technical specification limit	1.0	1.0	1.0	1.0	1.0	1.0	1.0	1.0	1.0	1.0	1.0	1.0
Indicator value	0.1	0.1	0.1	0.1	0.1	0.1	0.1	0	0	0	0	0

Licensee Comments: none

### Reactor Coolant System Leakage



Thresholds: White > 50.0 Yellow > 100.0

#### Notes

Reactor Coolant System Leakage	4/02	5/02	6/02	7/02	8/02	9/02	10/02	11/02	12/02	1/03	2/03	3/03
Maximum leakage	0.050	0.020	0.188	0.085	0.063	0.090	0.050	0.060	0.090	0.050	0.069	0.148
Technical specification limit	11.0	11.0	11.0	11.0	11.0	11.0	11.0	11.0	11.0	11.0	11.0	11.0
Indicator value	0.5	0.2	1.7	0.8	0.6	0.8	0.5	0.5	0.8	0.5	0.6	1.3

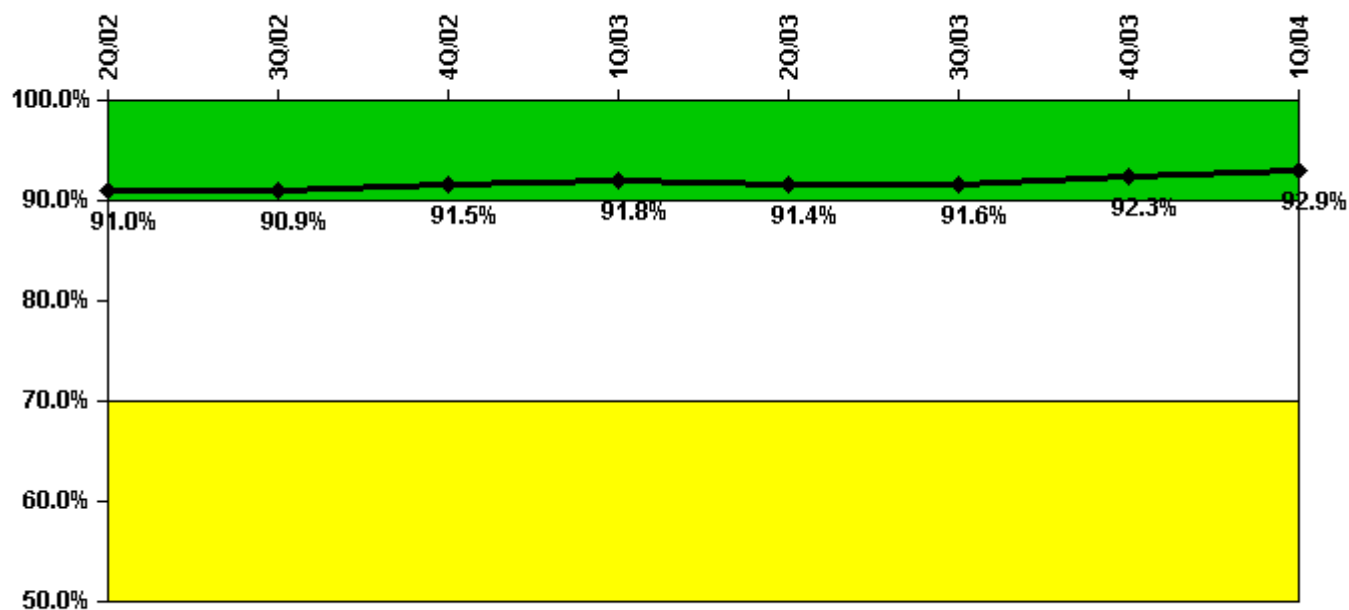
  

Reactor Coolant System Leakage	4/03	5/03	6/03	7/03	8/03	9/03	10/03	11/03	12/03	1/04	2/04	3/04
Maximum leakage	1.820	0.091	0.120	0.120	0.076	0.057	0.060	0.150	0.070	0.100	0.120	0.276
Technical specification limit	11.0	11.0	11.0	11.0	11.0	11.0	11.0	11.0	11.0	11.0	11.0	11.0
Indicator value	16.5	0.8	1.1	1.1	0.7	0.5	0.5	1.4	0.6	0.9	1.1	2.5

Licensee Comments:

3/04: A small primary steam leak associated with the upper pressurizer man-way was identified and repaired during the 1Q2004.

### Drill/Exercise Performance



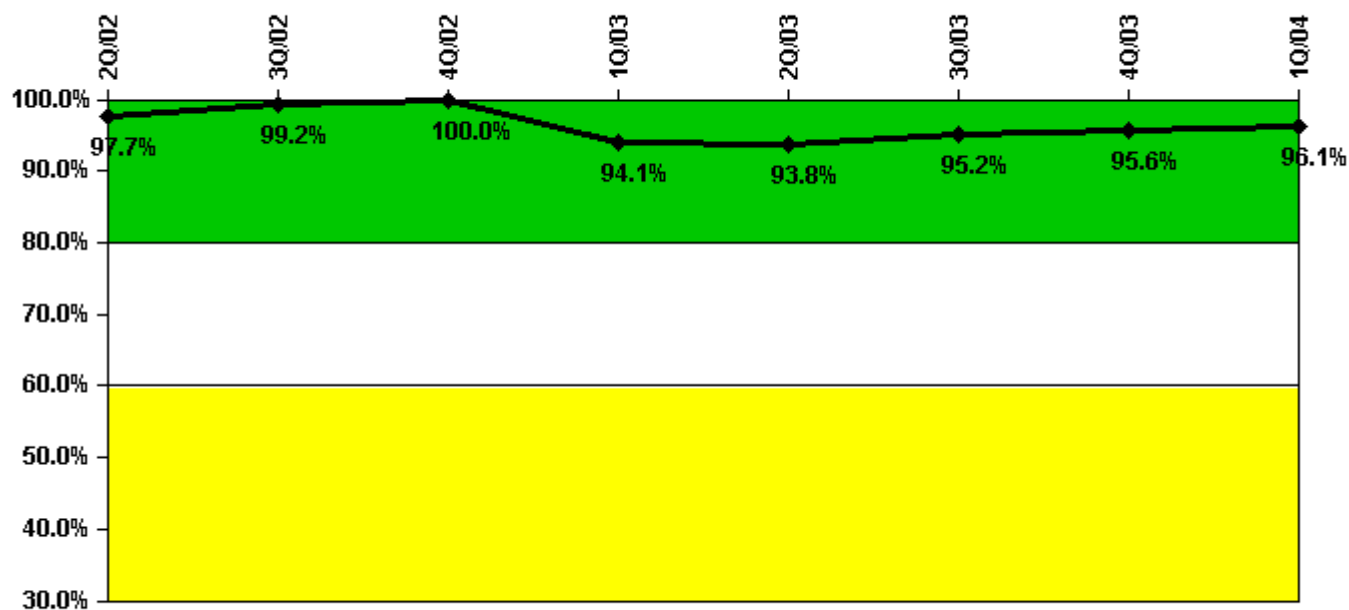
Thresholds: White < 90.0% Yellow < 70.0%

#### Notes

Drill/Exercise Performance	2Q/02	3Q/02	4Q/02	1Q/03	2Q/03	3Q/03	4Q/03	1Q/04
Successful opportunities	24.0	140.0	149.0	85.0	30.0	176.0	83.0	132.0
Total opportunities	34.0	150.0	159.0	87.0	33.0	192.0	90.0	137.0
Indicator value	91.0%	90.9%	91.5%	91.8%	91.4%	91.6%	92.3%	92.9%

Licensee Comments: none

### ERO Drill Participation



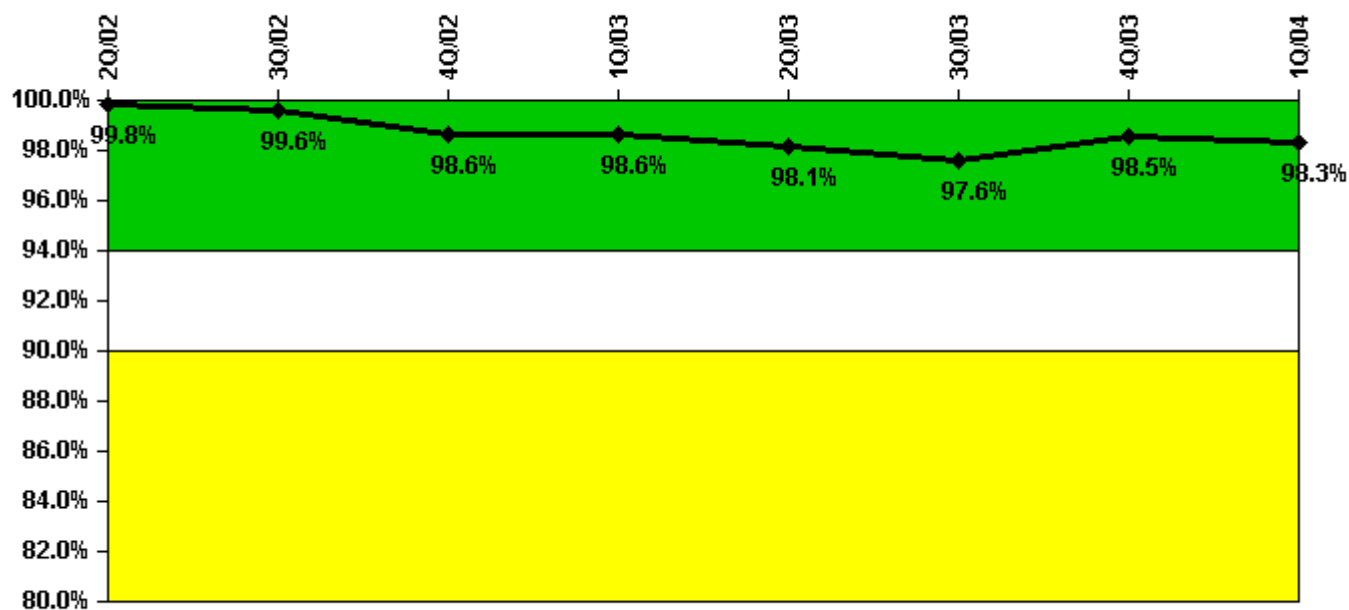
Thresholds: White < 80.0% Yellow < 60.0%

#### Notes

ERO Drill Participation	2Q/02	3Q/02	4Q/02	1Q/03	2Q/03	3Q/03	4Q/03	1Q/04
Participating Key personnel	125.0	130.0	131.0	143.0	135.0	138.0	129.0	124.0
Total Key personnel	128.0	131.0	131.0	152.0	144.0	145.0	135.0	129.0
Indicator value	97.7%	99.2%	100.0%	94.1%	93.8%	95.2%	95.6%	96.1%

Licensee Comments: none

### Alert & Notification System



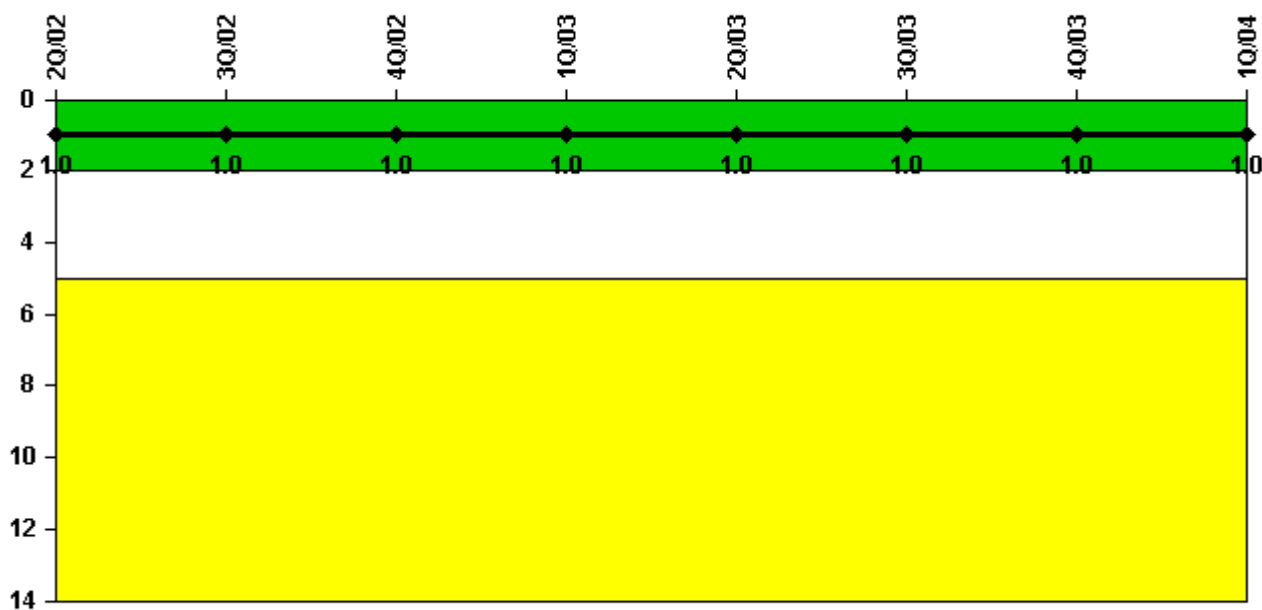
Thresholds: White < 94.0% Yellow < 90.0%

#### Notes

Alert & Notification System	2Q/02	3Q/02	4Q/02	1Q/03	2Q/03	3Q/03	4Q/03	1Q/04
Successful siren-tests	209	209	200	210	205	205	207	209
Total sirens-tests	210	210	210	210	210	210	210	210
Indicator value	99.8%	99.6%	98.6%	98.6%	98.1%	97.6%	98.5%	98.3%

Licensee Comments: none

### Occupational Exposure Control Effectiveness



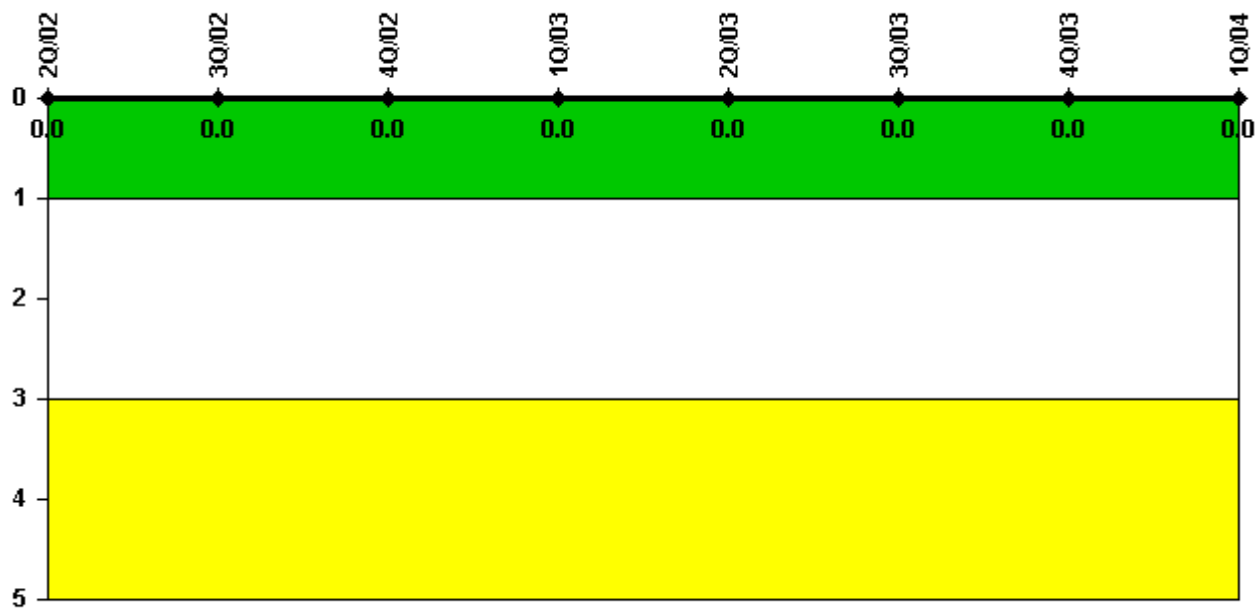
Thresholds: White > 2.0 Yellow > 5.0

#### Notes

Occupational Exposure Control Effectiveness	2Q/02	3Q/02	4Q/02	1Q/03	2Q/03	3Q/03	4Q/03	1Q/04
High radiation area occurrences	1	0	0	0	0	0	0	0
Very high radiation area occurrences	0	0	0	0	0	0	0	0
Unintended exposure occurrences	0	0	0	0	1	0	0	0
<b>Indicator value</b>	<b>1</b>	<b>1</b>	<b>1</b>	<b>1</b>	<b>1</b>	<b>1</b>	<b>1</b>	<b>1</b>

Licensee Comments: none

### RETS/ODCM Radiological Effluent



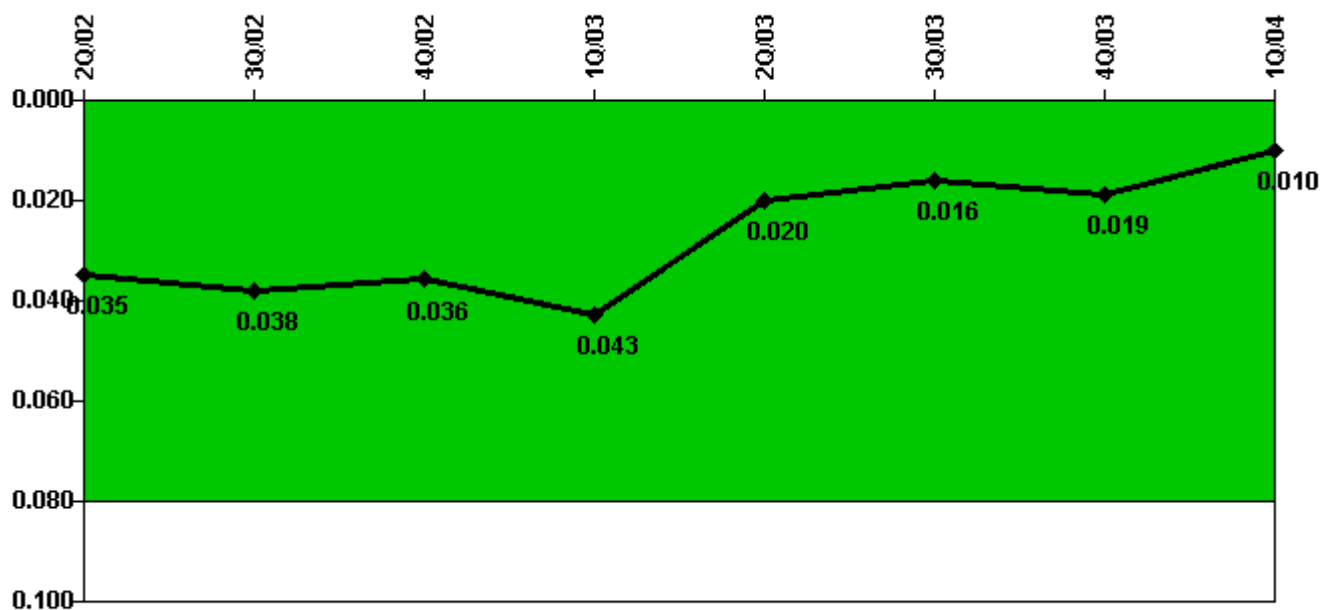
Thresholds: White > 1.0 Yellow > 3.0

#### Notes

RETS/ODCM Radiological Effluent	2Q/02	3Q/02	4Q/02	1Q/03	2Q/03	3Q/03	4Q/03	1Q/04
RETS/ODCM occurrences	0	0	0	0	0	0	0	0
<b>Indicator value</b>	<b>0</b>	<b>0</b>	<b>0</b>	<b>0</b>	<b>0</b>	<b>0</b>	<b>0</b>	<b>0</b>

Licensee Comments: none

### Protected Area Security Performance Index



Thresholds: White > 0.080

#### Notes

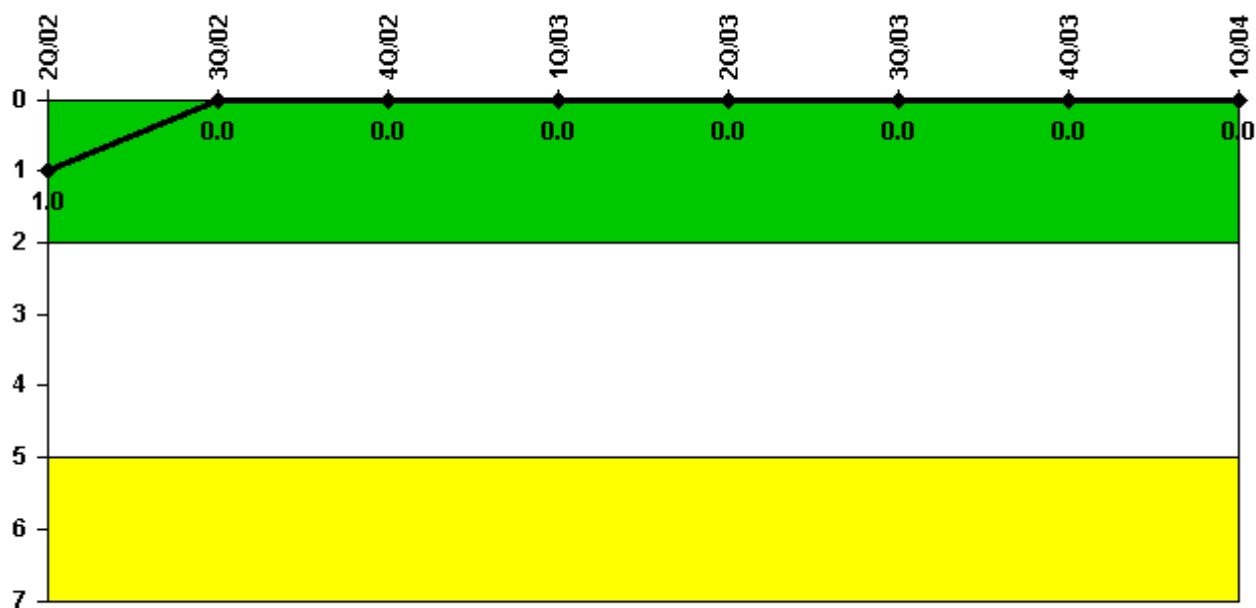
Protected Area Security Performance Index	2Q/02	3Q/02	4Q/02	1Q/03	2Q/03	3Q/03	4Q/03	1Q/04
IDS compensatory hours	680.50	111.70	52.10	263.40	25.70	25.20	139.90	94.90
CCTV compensatory hours	0	0	4.4	16.2	0	0	0	0
IDS normalization factor	1.40	1.40	1.40	1.50	1.40	1.40	1.40	1.60
CCTV normalization factor	1.0	1.0	1.0	1.0	1.0	1.0	1.0	1.1
Index Value	0.035	0.038	0.036	0.043	0.020	0.016	0.019	0.010

Licensee Comments:

1Q/04: In accordance with NEI 99-02, compensatory hours associated with scheduled equipment upgrades that are being performed and those compensatory hours for configuration issues associated with equipment upgrades are excluded.



### Personnel Screening Program



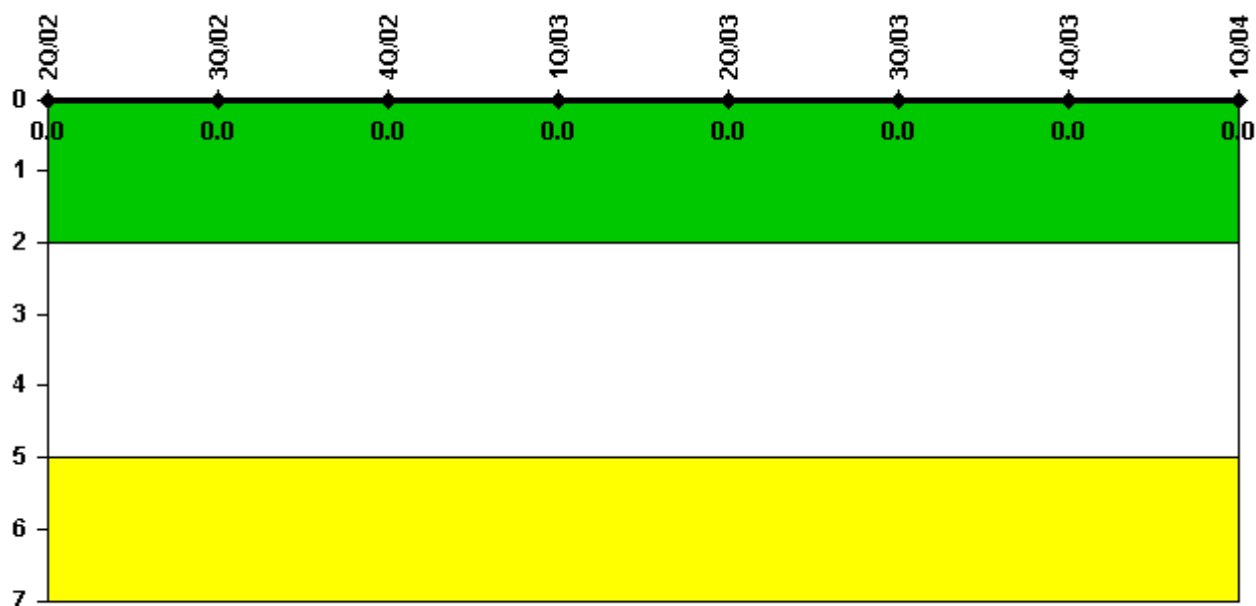
Thresholds: White > 2.0 Yellow > 5.0

#### Notes

Personnel Screening Program	2Q/02	3Q/02	4Q/02	1Q/03	2Q/03	3Q/03	4Q/03	1Q/04
Program failures	0	0	0	0	0	0	0	0
<b>Indicator value</b>	<b>1</b>	<b>0</b>	<b>0</b>	<b>0</b>	<b>0</b>	<b>0</b>	<b>0</b>	<b>0</b>

Licensee Comments: none

### FFD/Personnel Reliability



Thresholds: White > 2.0 Yellow > 5.0

#### Notes

FFD/Personnel Reliability	2Q/02	3Q/02	4Q/02	1Q/03	2Q/03	3Q/03	4Q/03	1Q/04
Program Failures	0	0	0	0	0	0	0	0
<b>Indicator value</b>	<b>0</b>	<b>0</b>	<b>0</b>	<b>0</b>	<b>0</b>	<b>0</b>	<b>0</b>	<b>0</b>

Licensee Comments: none

▲ [PI Summary](#) | [Inspection Findings Summary](#) | [Reactor Oversight Process](#)

Last Modified: April 22, 2004