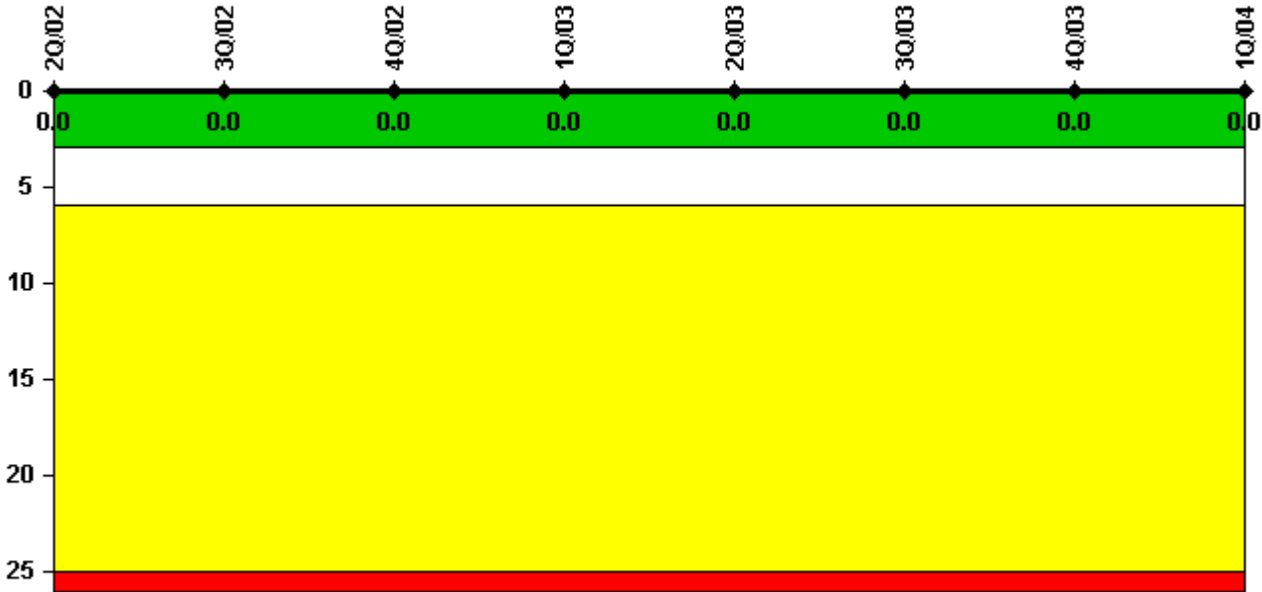


Byron 2

1Q/2004 Performance Indicators

Licensee's General Comments: none

Unplanned Scrams per 7000 Critical Hrs



Thresholds: White > 3.0 Yellow > 6.0 Red > 25.0

Notes

Unplanned Scrams per 7000 Critical Hrs	2Q/02	3Q/02	4Q/02	1Q/03	2Q/03	3Q/03	4Q/03	1Q/04
Unplanned scrams	0	0	0	0	0	0	0	0
Critical hours	2056.2	1870.2	2062.0	2160.0	2183.0	2208.0	2209.0	1967.0
Indicator value	0	0	0	0	0	0	0	0

Licensee Comments: none

Scrams with Loss of Normal Heat Removal



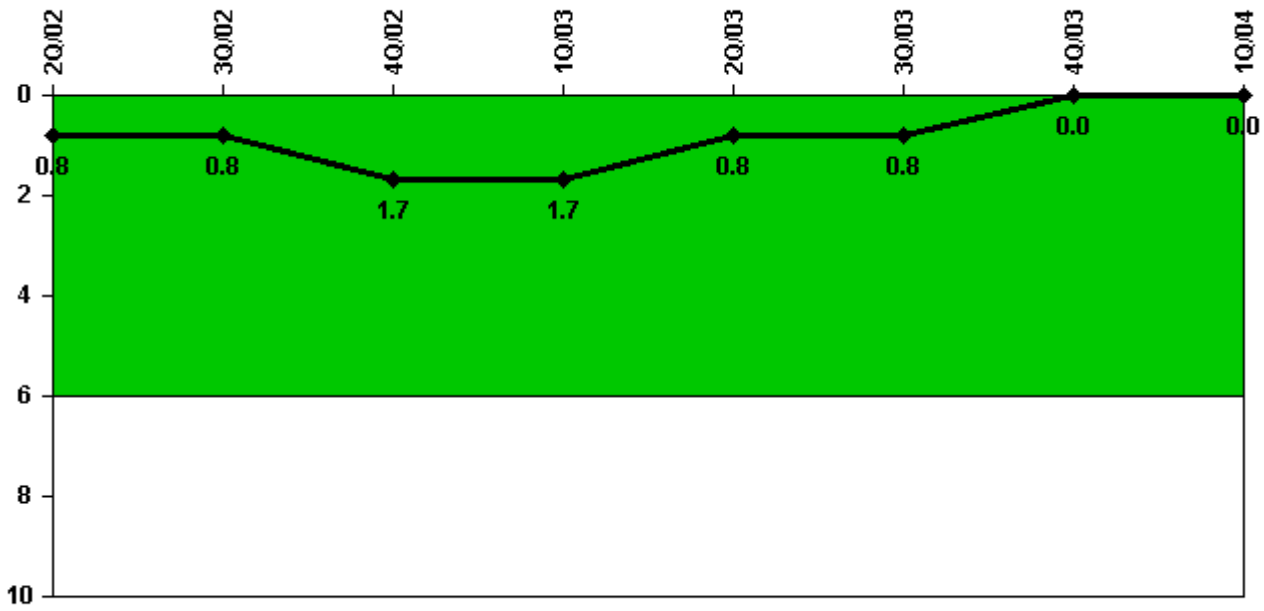
Thresholds: White > 2.0 Yellow > 10.0 Red > 20.0

Notes

Scrams with Loss of Normal Heat Removal	2Q/02	3Q/02	4Q/02	1Q/03	2Q/03	3Q/03	4Q/03	1Q/04
Scrams	0	0	0	0	0	0	0	0
Indicator value	0	0	0	0	0	0	0	0

Licensee Comments: none

Unplanned Power Changes per 7000 Critical Hrs



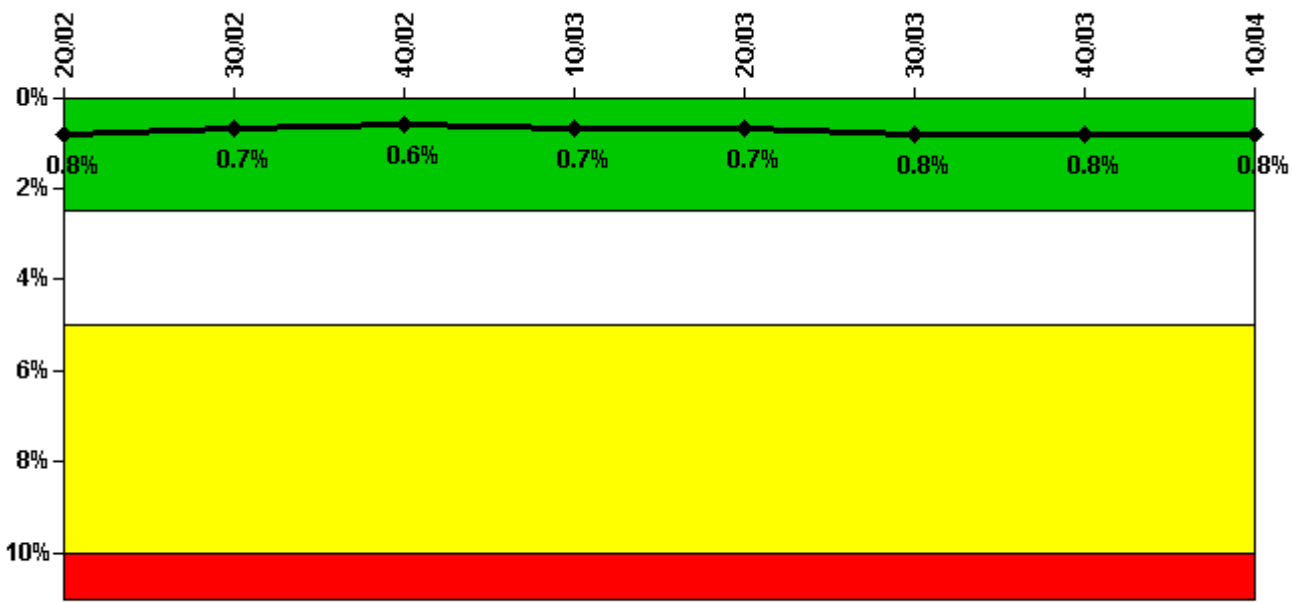
Thresholds: White > 6.0

Notes

Unplanned Power Changes per 7000 Critical Hrs	2Q/02	3Q/02	4Q/02	1Q/03	2Q/03	3Q/03	4Q/03	1Q/04
Unplanned power changes	1.0	0	1.0	0	0	0	0	0
Critical hours	2056.2	1870.2	2062.0	2160.0	2183.0	2208.0	2209.0	1967.0
Indicator value	0.8	0.8	1.7	1.7	0.8	0.8	0	0

Licensee Comments: none

Safety System Unavailability, Emergency AC Power



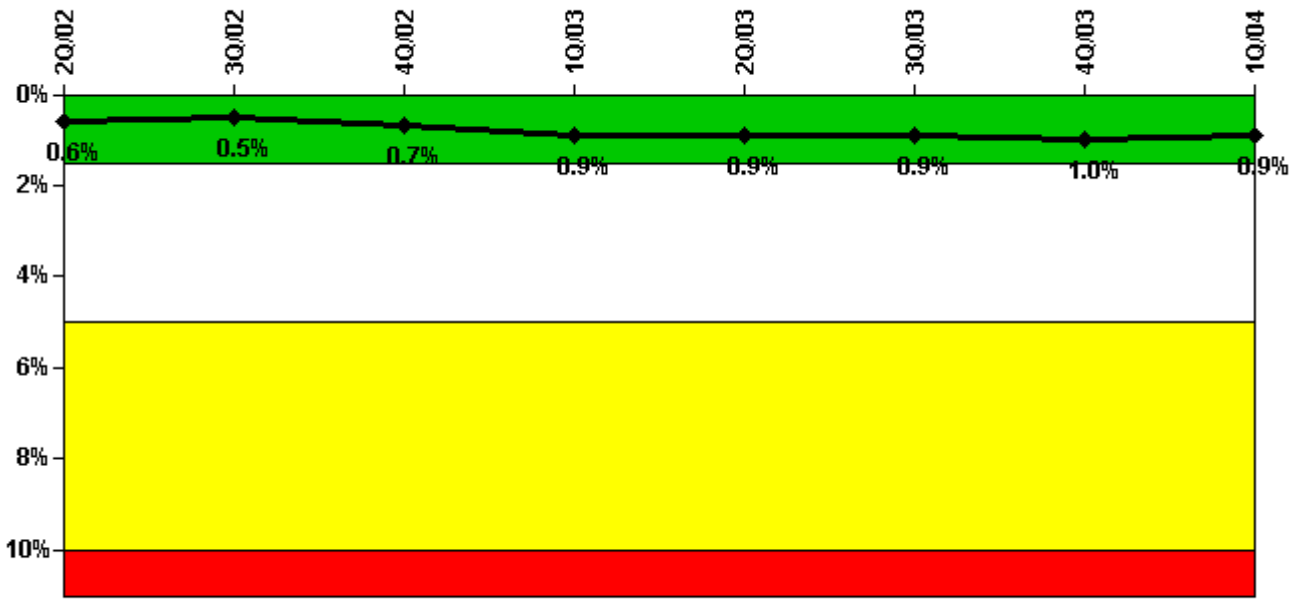
Thresholds: White > 2.5% Yellow > 5.0% Red > 10.0%

Notes

Safety System Unavailability, Emergency AC Power	2Q/02	3Q/02	4Q/02	1Q/03	2Q/03	3Q/03	4Q/03	1Q/04
Train 1								
Planned unavailable hours	13.20	2.30	8.60	42.30	14.80	3.20	1.50	6.20
Unplanned unavailable hours	0	0	0	0	0	0	0	0
Fault exposure hours	0	0	0	0	0	0	0	0
Effective Reset hours	0	0	0	0	0	0	0	0
Required hours	2183.00	2208.00	2209.00	2160.00	2183.00	2208.00	2209.00	2184.00
Train 2								
Planned unavailable hours	12.00	3.40	2.60	1.70	11.40	4.10	2.90	1.80
Unplanned unavailable hours	30.40	10.70	0	0	11.80	54.90	0	0
Fault exposure hours	0	0	0	0	0	0	0	0
Effective Reset hours	0	0	0	0	0	0	0	0
Required hours	2183.00	2208.00	2209.00	2160.00	2183.00	2208.00	2209.00	2184.00
Indicator value	0.8%	0.7%	0.6%	0.7%	0.7%	0.8%	0.8%	0.8%

Licensee Comments: none

Safety System Unavailability, High Pressure Injection System (HPSI)



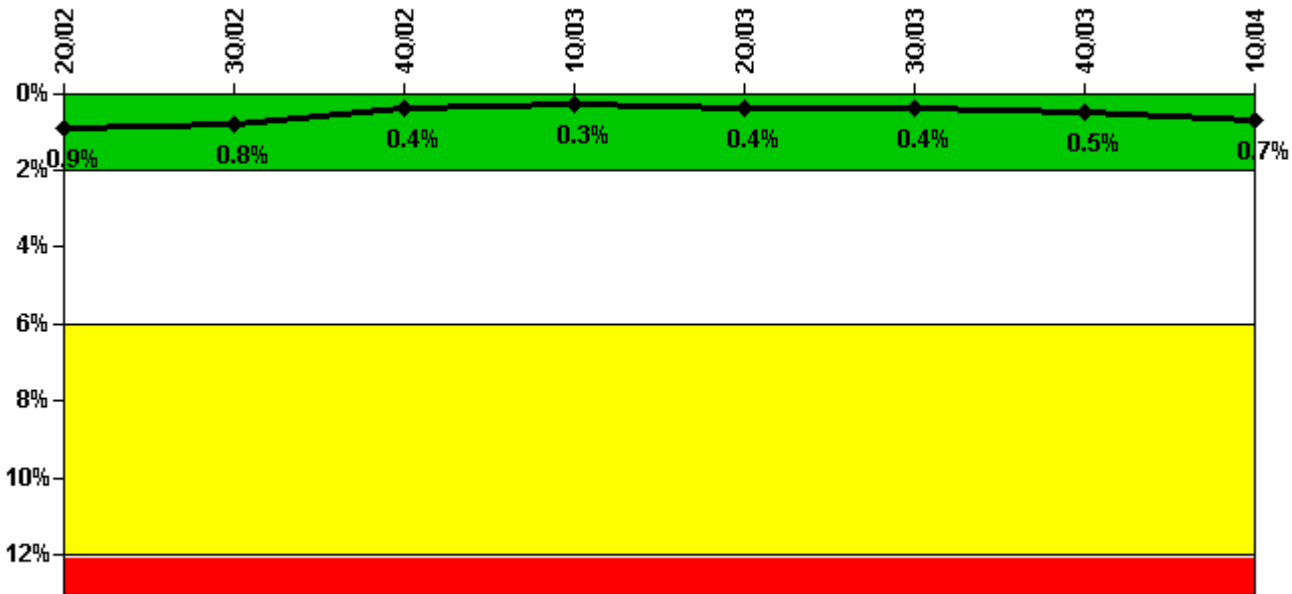
Thresholds: White > 1.5% Yellow > 5.0% Red > 10.0%

Notes

Safety System Unavailability, High Pressure Injection System (HPSI)	2Q/02	3Q/02	4Q/02	1Q/03	2Q/03	3Q/03	4Q/03	1Q/04
Train 1								
Planned unavailable hours	3.20	23.90	2.40	3.60	1.80	3.20	23.40	5.30
Unplanned unavailable hours	0	0	0	213.80	0	0	3.70	0
Fault exposure hours	0	0	0	0	0	0	0	0
Effective Reset hours	0	0	0	0	0	0	0	0
Required hours	2056.20	1870.20	2062.20	2160.00	2183.00	2208.00	2209.00	1967.02
Train 2								
Planned unavailable hours	6.60	3.40	1.30	1.70	4.10	1.90	2.90	1.80
Unplanned unavailable hours	0	0	135.90	2.80	0	0	0	0
Fault exposure hours	0	0	50.40	0	0	0	0	0
Effective Reset hours	0	0	0	0	0	0	0	0
Required hours	2056.20	1870.20	2062.20	2160.00	2183.00	2208.00	2209.00	1967.02
Train 3								
Planned unavailable hours	3.20	4.90	2.40	13.60	39.00	3.20	1.50	5.30
Unplanned unavailable hours	0	0	0	0	0	0	0	0
Fault exposure hours	0	0	0	0	0	0	0	0
Effective Reset hours	0	0	0	0	0	0	0	0
Required hours	2056.20	1870.20	2062.20	2160.00	2183.00	2208.00	2209.00	1967.02
Train 4								
Planned unavailable hours	26.80	3.40	3.00	1.70	4.10	3.10	24.60	1.80
Unplanned unavailable hours	0	0	0	0	0	0	0	0
Fault exposure hours	0	0	0	0	0	0	0	0
Effective Reset hours	0	0	0	0	0	0	0	0
Required hours	2056.20	1870.20	2062.20	2160.00	2183.00	2208.00	2209.00	1967.02
Indicator value	0.6%	0.5%	0.7%	0.9%	0.9%	0.9%	1.0%	0.9%

Licensee Comments: none

Safety System Unavailability, Heat Removal System (AFW)



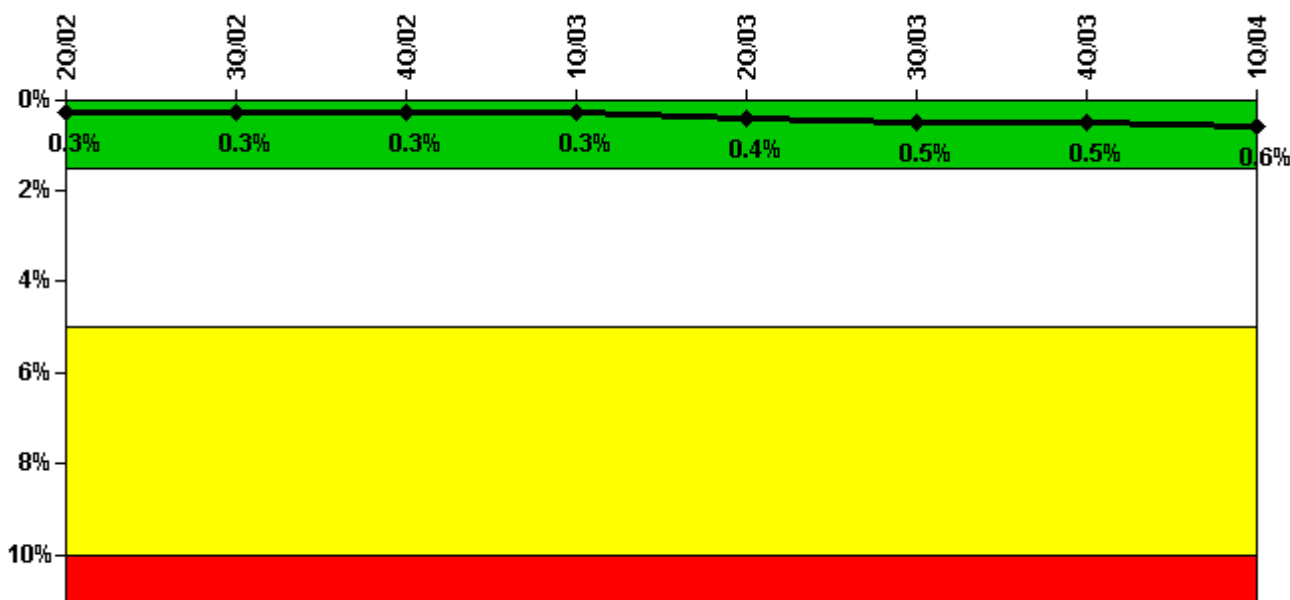
Thresholds: White > 2.0% Yellow > 6.0% Red > 12.0%

Notes

Safety System Unavailability, Heat Removal System (AFW)	2Q/02	3Q/02	4Q/02	1Q/03	2Q/03	3Q/03	4Q/03	1Q/04
Train 1								
Planned unavailable hours	4.30	3.60	4.10	4.60	3.30	7.00	3.30	6.90
Unplanned unavailable hours	0	0	0	0	0	7.00	0	0
Fault exposure hours	0	0	0	0	0	0	0	0
Effective Reset hours	0	0	0	0	0	0	0	0
Required hours	2056.20	1870.20	2062.20	2160.00	2183.00	2208.00	2209.00	1967.02
Train 2								
Planned unavailable hours	2.90	26.20	19.30	2.80	59.70	3.40	11.10	42.60
Unplanned unavailable hours	0	0	0	0	0	0	25.60	57.90
Fault exposure hours	0	0	0	0	0	0	0	0
Effective Reset hours	0	0	0	0	0	0	0	0
Required hours	2056.20	1870.20	2062.20	2160.00	2183.00	2208.00	2209.00	1967.02
Indicator value	0.9%	0.8%	0.4%	0.3%	0.4%	0.4%	0.5%	0.7%

Licensee Comments: none

Safety System Unavailability, Residual Heat Removal System



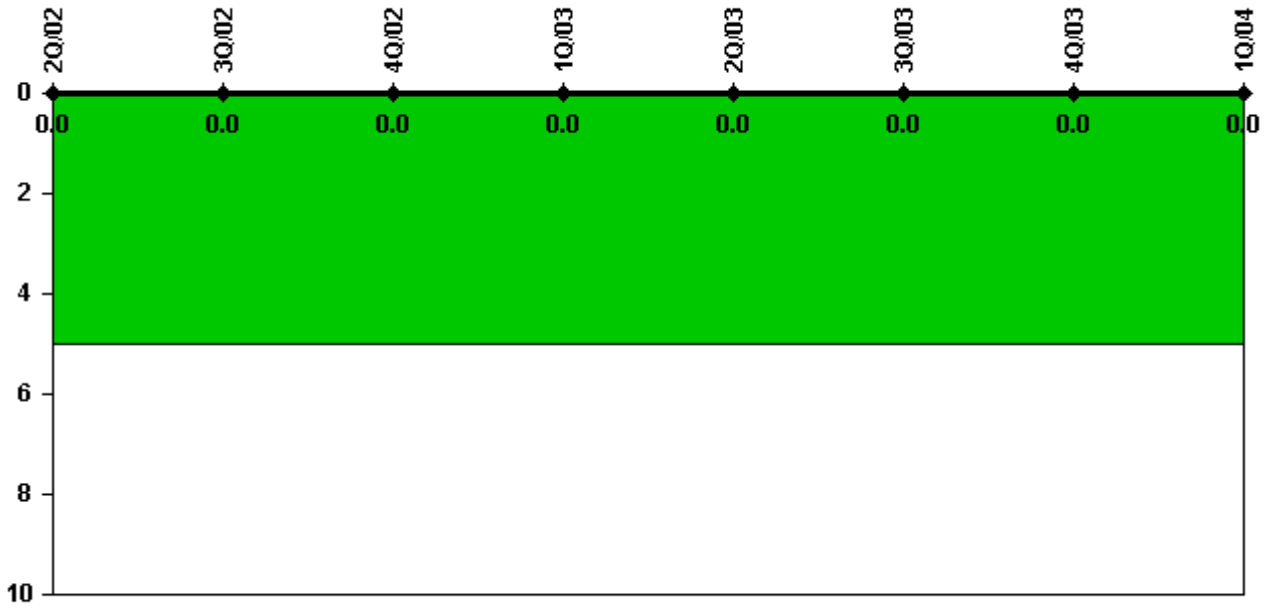
Thresholds: White > 1.5% Yellow > 5.0% Red > 10.0%

Notes

Safety System Unavailability, Residual Heat Removal System	2Q/02	3Q/02	4Q/02	1Q/03	2Q/03	3Q/03	4Q/03	1Q/04
Train 1								
Planned unavailable hours	3.20	21.60	2.40	18.10	49.80	58.50	1.60	9.50
Unplanned unavailable hours	0	0	0	0	0	0	0	0
Fault exposure hours	0	0	0	0	0	0	0	0
Effective Reset hours	0	0	0	0	0	0	0	0
Required hours	2183.00	2208.00	2209.00	2160.00	2183.00	2208.00	2209.00	2184.00
Train 2								
Planned unavailable hours	2.90	3.70	2.60	1.70	18.20	1.90	44.20	46.40
Unplanned unavailable hours	0	0	0	0	0	0	0	0
Fault exposure hours	0	0	0	0	0	0	0	0
Effective Reset hours	0	0	0	0	0	0	0	0
Required hours	2183.00	2208.00	2209.00	2160.00	2183.00	2208.00	2209.00	2184.00
Indicator value	0.3%	0.3%	0.3%	0.3%	0.4%	0.5%	0.5%	0.6%

Licensee Comments: none

Safety System Functional Failures (PWR)



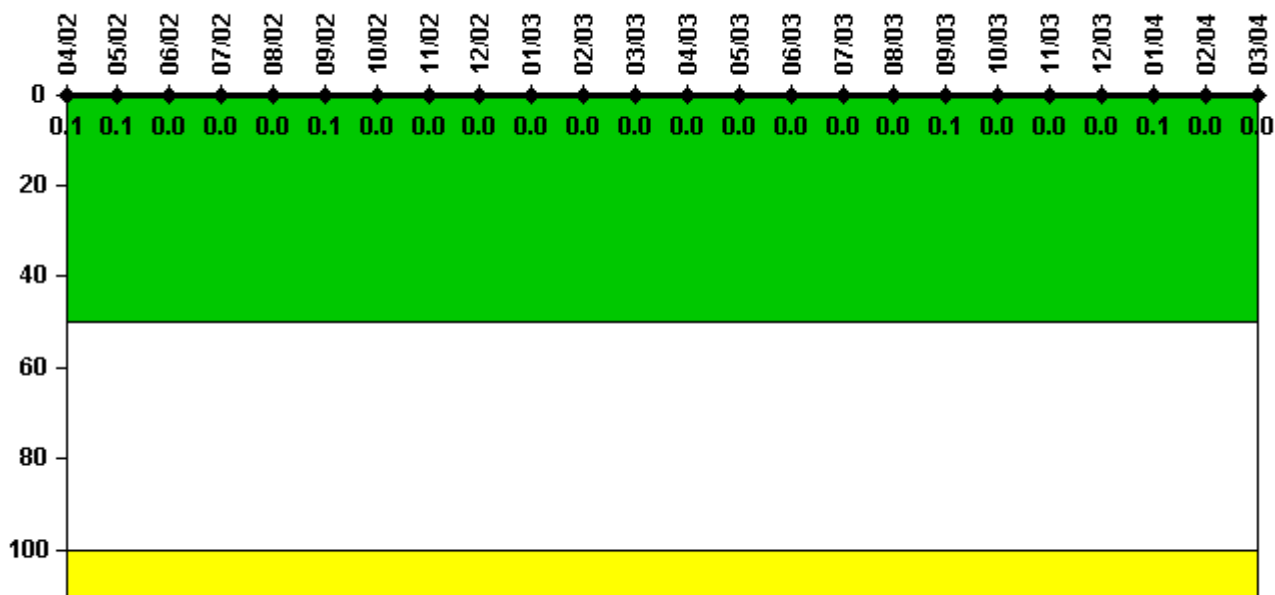
Thresholds: White > 5.0

Notes

Safety System Functional Failures (PWR)	2Q/02	3Q/02	4Q/02	1Q/03	2Q/03	3Q/03	4Q/03	1Q/04
Safety System Functional Failures	0	0	0	0	0	0	0	0
Indicator value	0	0	0	0	0	0	0	0

Licensee Comments: none

Reactor Coolant System Activity



Thresholds: White > 50.0 Yellow > 100.0

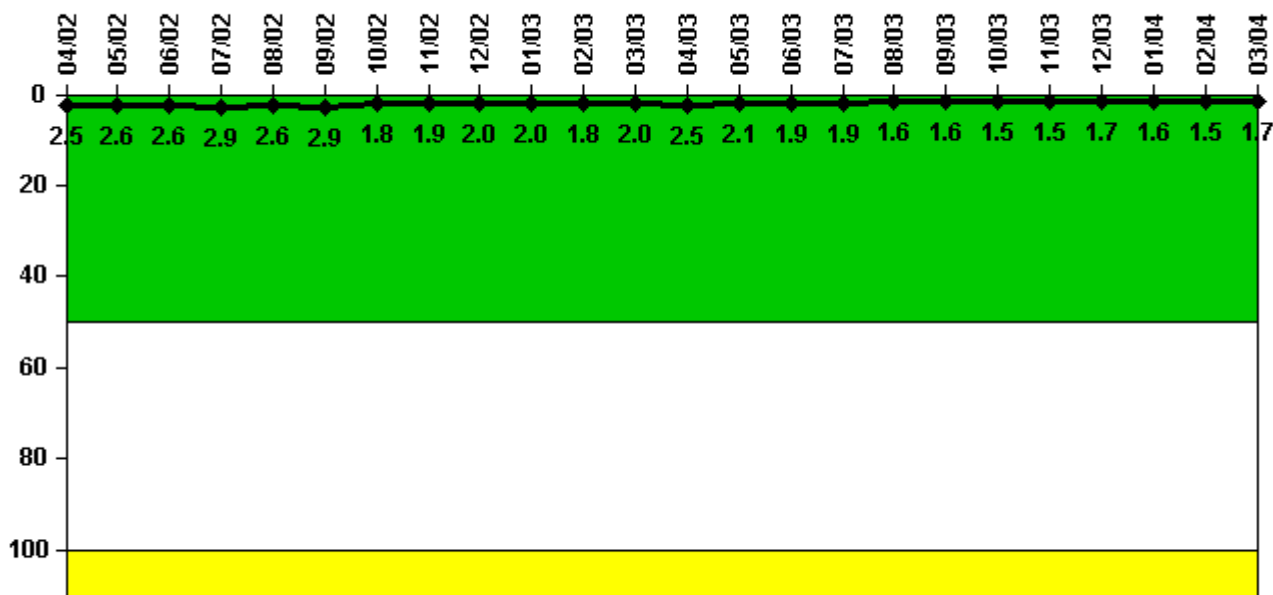
Notes

Reactor Coolant System Activity	4/02	5/02	6/02	7/02	8/02	9/02	10/02	11/02	12/02	1/03	2/03	3/03
Maximum activity	0.000841	0.001210	0.000483	0.000451	0.000447	0.000855	0.000242	0.000318	0.000327	0.000287	0.000301	0.000288
Technical specification limit	1.0	1.0	1.0	1.0	1.0	1.0	1.0	1.0	1.0	1.0	1.0	1.0
Indicator value	0.1	0.1	0	0	0	0.1	0	0	0	0	0	0

Reactor Coolant System Activity	4/03	5/03	6/03	7/03	8/03	9/03	10/03	11/03	12/03	1/04	2/04	3/04
Maximum activity	0.000295	0.000344	0.000317	0.000335	0.000342	0.000523	0.000012	0.000365	0.000399	0.001020	0.000380	0.000384
Technical specification limit	1.0	1.0	1.0	1.0	1.0	1.0	1.0	1.0	1.0	1.0	1.0	1.0
Indicator value	0	0	0	0	0	0.1	0	0	0	0.1	0	0

Licensee Comments: none

Reactor Coolant System Leakage



Thresholds: White > 50.0 Yellow > 100.0

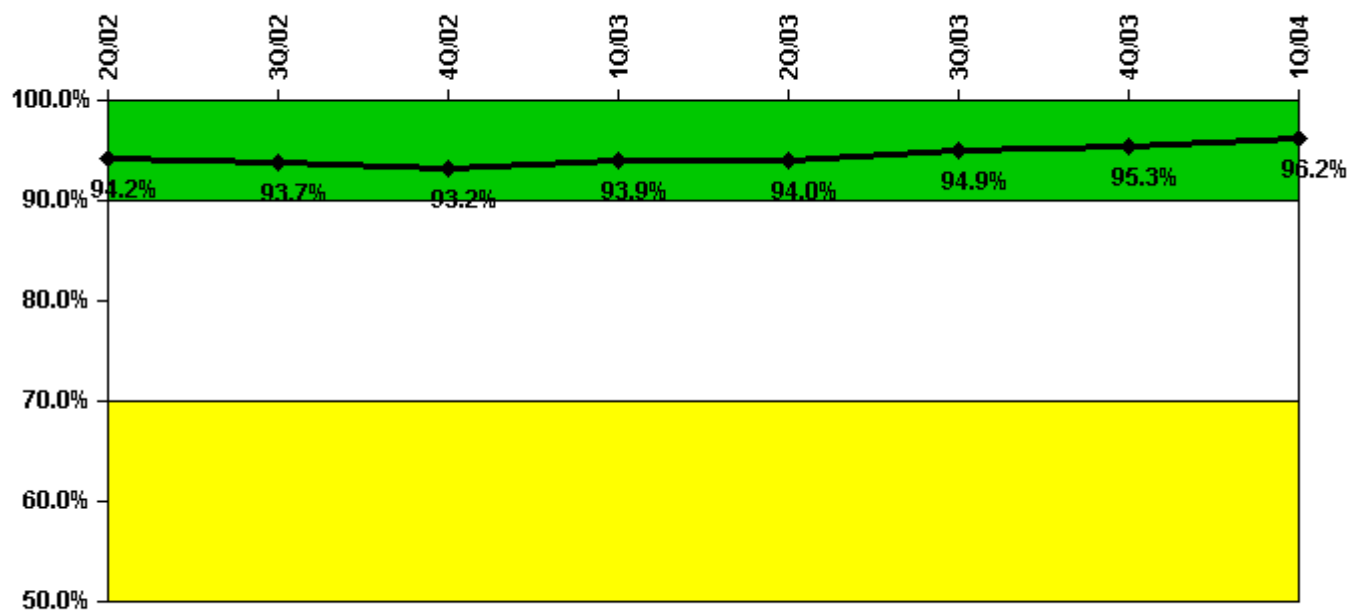
Notes

Reactor Coolant System Leakage	4/02	5/02	6/02	7/02	8/02	9/02	10/02	11/02	12/02	1/03	2/03	3/03
Maximum leakage	0.249	0.257	0.259	0.286	0.256	0.287	0.182	0.192	0.204	0.199	0.180	0.199
Technical specification limit	10.0	10.0	10.0	10.0	10.0	10.0	10.0	10.0	10.0	10.0	10.0	10.0
Indicator value	2.5	2.6	2.6	2.9	2.6	2.9	1.8	1.9	2.0	2.0	1.8	2.0

Reactor Coolant System Leakage	4/03	5/03	6/03	7/03	8/03	9/03	10/03	11/03	12/03	1/04	2/04	3/04
Maximum leakage	0.247	0.212	0.188	0.185	0.155	0.157	0.152	0.148	0.172	0.156	0.154	0.174
Technical specification limit	10.0	10.0	10.0	10.0	10.0	10.0	10.0	10.0	10.0	10.0	10.0	10.0
Indicator value	2.5	2.1	1.9	1.9	1.6	1.6	1.5	1.5	1.7	1.6	1.5	1.7

Licensee Comments: none

Drill/Exercise Performance



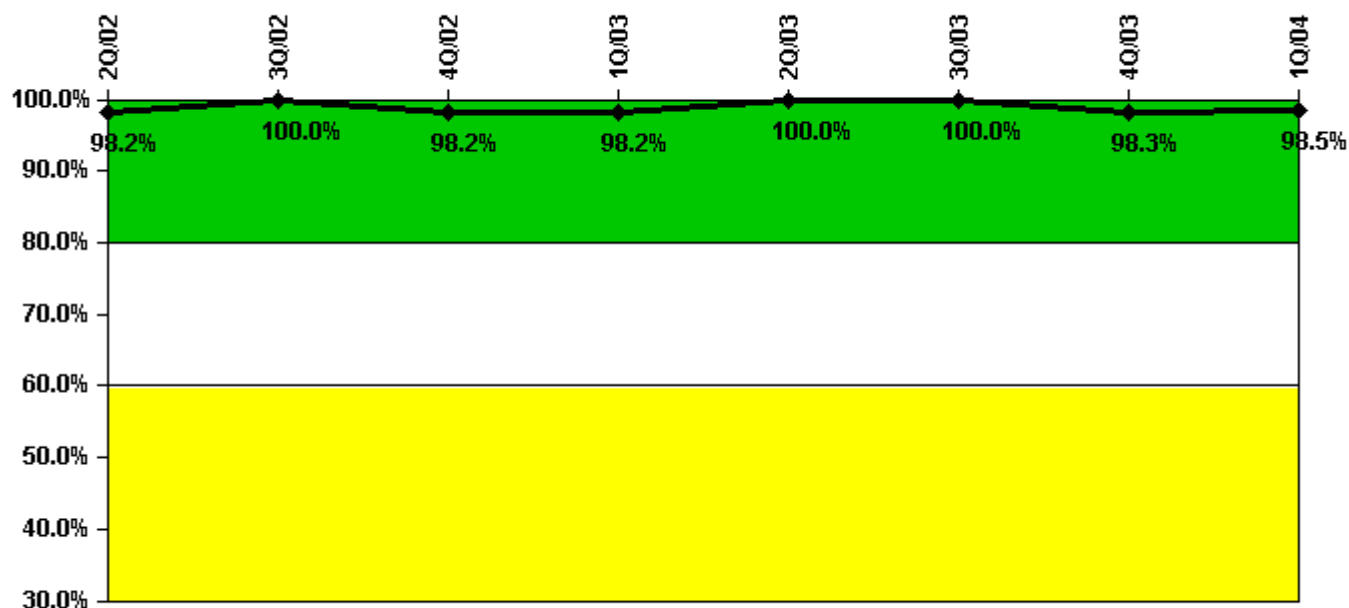
Thresholds: White < 90.0% Yellow < 70.0%

Notes

Drill/Exercise Performance	2Q/02	3Q/02	4Q/02	1Q/03	2Q/03	3Q/03	4Q/03	1Q/04
Successful opportunities	14.0	33.0	43.0	39.0	36.0	45.0	18.0	50.0
Total opportunities	14.0	34.0	47.0	41.0	38.0	47.0	18.0	50.0
Indicator value	94.2%	93.7%	93.2%	93.9%	94.0%	94.9%	95.3%	96.2%

Licensee Comments: none

ERO Drill Participation



Thresholds: White < 80.0% Yellow < 60.0%

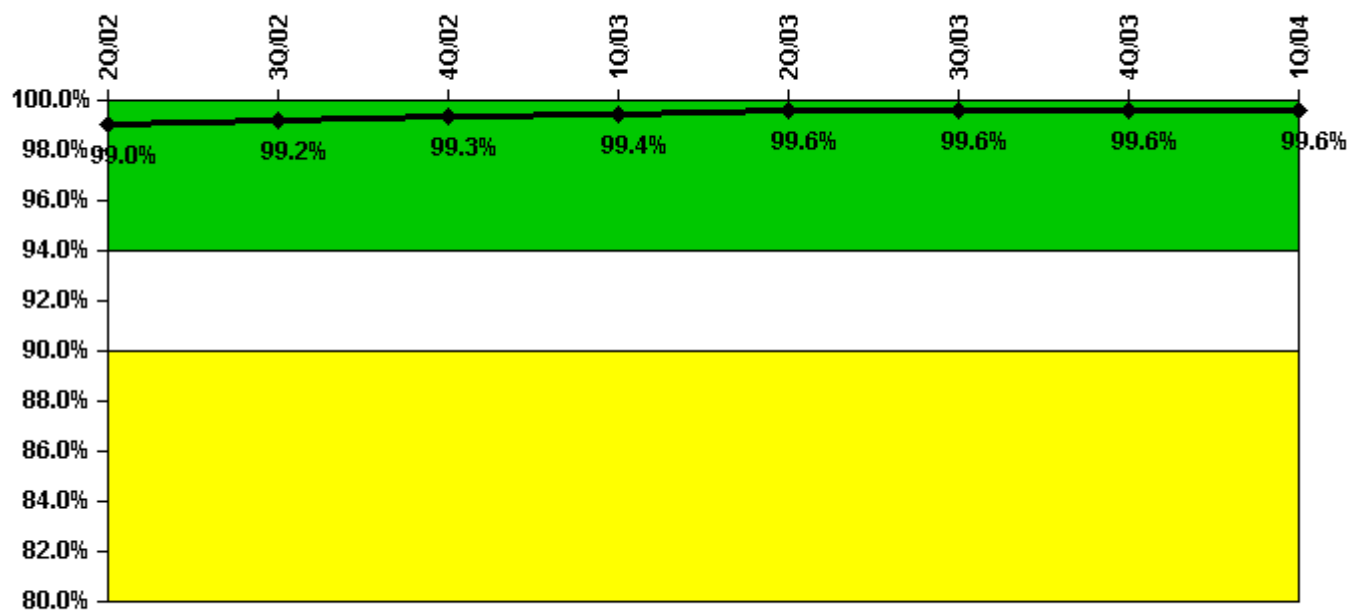
Notes

ERO Drill Participation	2Q/02	3Q/02	4Q/02	1Q/03	2Q/03	3Q/03	4Q/03	1Q/04
Participating Key personnel	55.0	55.0	54.0	54.0	57.0	59.0	57.0	67.0
Total Key personnel	56.0	55.0	55.0	55.0	57.0	59.0	58.0	68.0
Indicator value	98.2%	100.0%	98.2%	98.2%	100.0%	100.0%	98.3%	98.5%

Licensee Comments:

1Q/04: Exelon has modified the utility procedure for the calculation of the NEI 99-02, Revision 2, ERO Participation PI to count individual opportunities for each Shift Manager function. Exelon has adopted the revised calculation beginning with 1Q 2004.

Alert & Notification System



Thresholds: White < 94.0% Yellow < 90.0%

Notes

Alert & Notification System	2Q/02	3Q/02	4Q/02	1Q/03	2Q/03	3Q/03	4Q/03	1Q/04
Successful siren-tests	5945	5994	5991	5898	5990	5988	5997	6000
Total sirens-tests	6016	6016	6016	5922	6016	6016	6016	6016
Indicator value	99.0%	99.2%	99.3%	99.4%	99.6%	99.6%	99.6%	99.6%

Licensee Comments: none

Occupational Exposure Control Effectiveness



Thresholds: White > 2.0 Yellow > 5.0

Notes

Occupational Exposure Control Effectiveness	2Q/02	3Q/02	4Q/02	1Q/03	2Q/03	3Q/03	4Q/03	1Q/04
High radiation area occurrences	0	0	0	0	0	0	0	0
Very high radiation area occurrences	0	0	0	0	0	0	0	0
Unintended exposure occurrences	0	0	0	0	0	0	0	0
Indicator value	0	0	0	0	0	0	0	0

Licensee Comments: none

RETS/ODCM Radiological Effluent



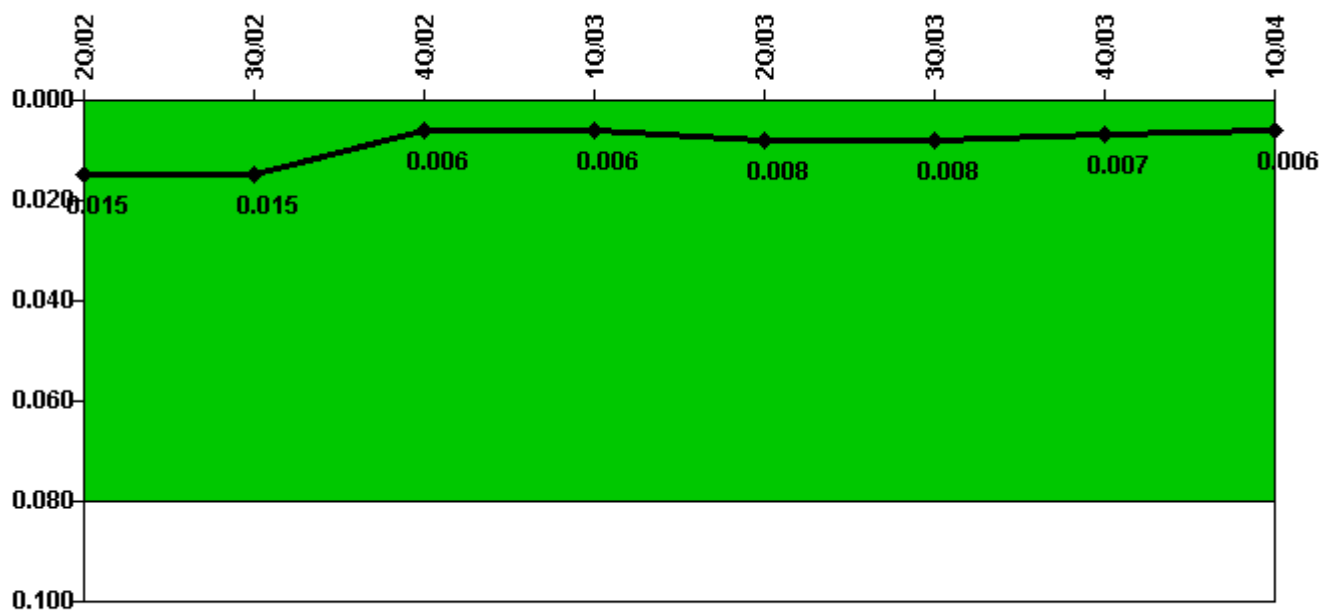
Thresholds: White > 1.0 Yellow > 3.0

Notes

RETS/ODCM Radiological Effluent	2Q/02	3Q/02	4Q/02	1Q/03	2Q/03	3Q/03	4Q/03	1Q/04
RETS/ODCM occurrences	0	0	0	0	0	0	0	0
Indicator value	0	0	0	0	0	0	0	0

Licensee Comments: none

Protected Area Security Performance Index



Thresholds: White > 0.080

Notes

Protected Area Security Performance Index	2Q/02	3Q/02	4Q/02	1Q/03	2Q/03	3Q/03	4Q/03	1Q/04
IDS compensatory hours	14.60	12.80	34.10	21.90	0	5.45	0	22.85
CCTV compensatory hours	13.5	4.3	5.8	21.4	55.9	19.5	2.4	1.3
IDS normalization factor	1.40	1.40	1.40	1.40	1.40	1.40	1.40	1.40
CCTV normalization factor	1.0	1.0	1.0	1.0	1.0	1.0	1.0	1.0
Index Value	0.015	0.015	0.006	0.006	0.008	0.008	0.007	0.006

Licensee Comments: none

Personnel Screening Program



Thresholds: White > 2.0 Yellow > 5.0

Notes

Personnel Screening Program	2Q/02	3Q/02	4Q/02	1Q/03	2Q/03	3Q/03	4Q/03	1Q/04
Program failures	0	0	0	0	0	0	0	0
Indicator value	0	0	0	0	0	0	0	0

Licensee Comments: none

FFD/Personnel Reliability



Thresholds: White > 2.0 Yellow > 5.0

Notes

FFD/Personnel Reliability	2Q/02	3Q/02	4Q/02	1Q/03	2Q/03	3Q/03	4Q/03	1Q/04
Program Failures	0	0	0	0	0	0	0	0
Indicator value	0	0	0	0	0	0	0	0

Licensee Comments: none

▲ [PI Summary](#) | [Inspection Findings Summary](#) | [Reactor Oversight Process](#)

Last Modified: April 22, 2004