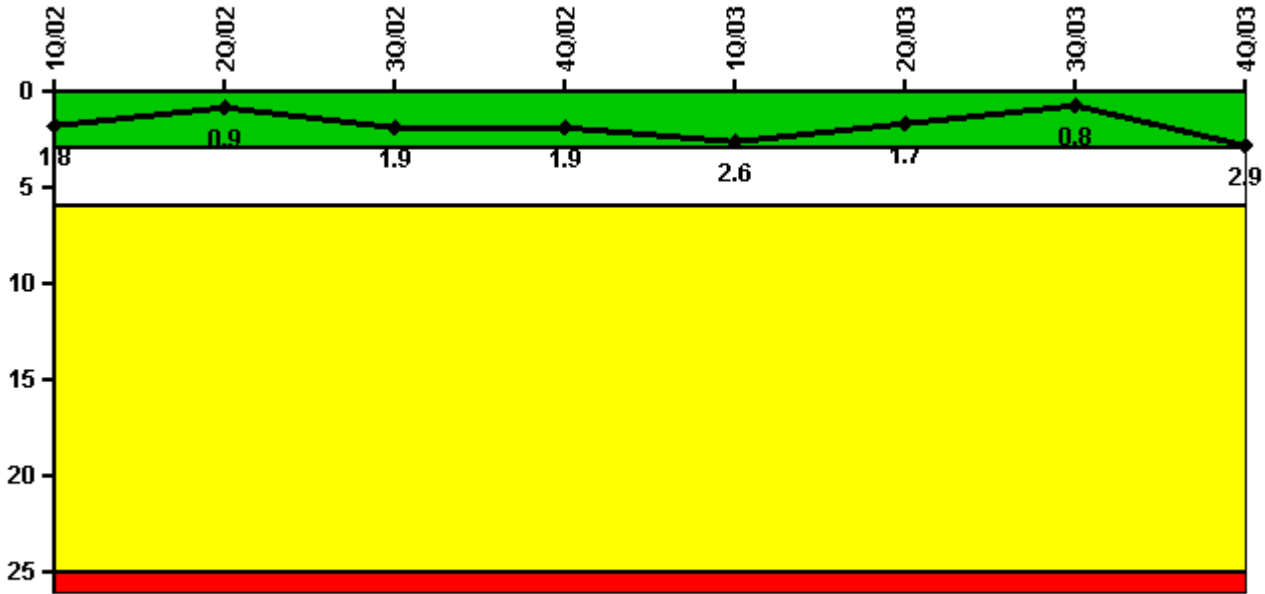


Millstone 2

4Q/2003 Performance Indicators

Licensee's General Comments: none

Unplanned Scrams per 7000 Critical Hrs



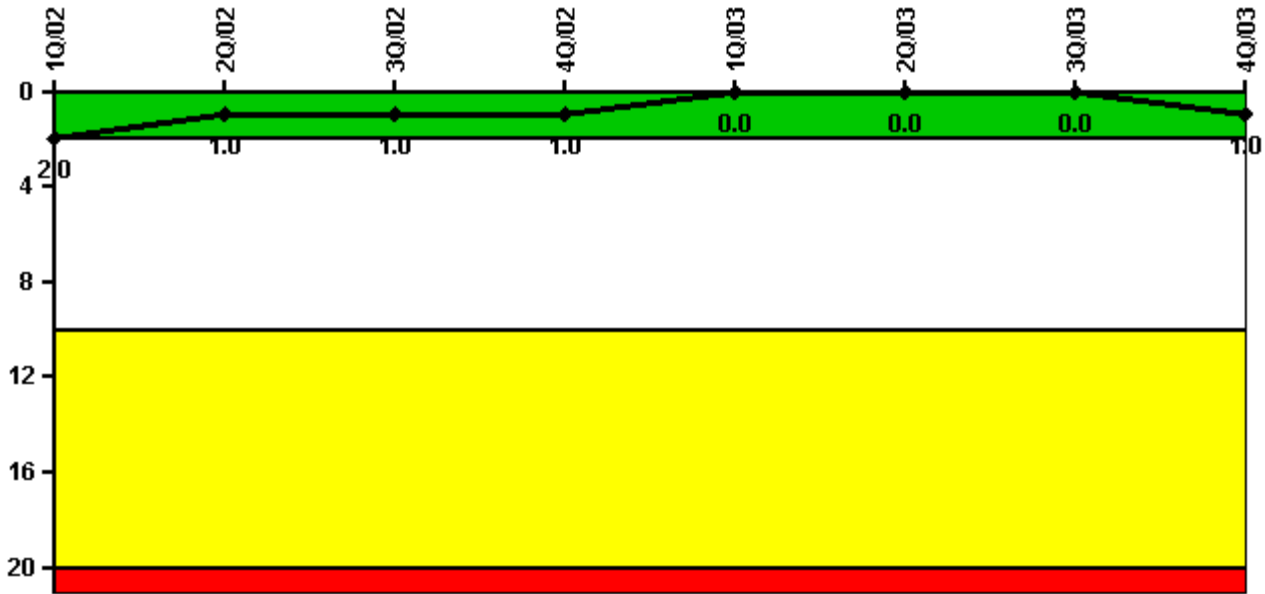
Thresholds: White > 3.0 Yellow > 6.0 Red > 25.0

Notes

Unplanned Scrams per 7000 Critical Hrs	1Q/02	2Q/02	3Q/02	4Q/02	1Q/03	2Q/03	3Q/03	4Q/03
Unplanned scrams	0	1.0	1.0	0	1.0	0	0	2.0
Critical hours	1112.3	1993.6	2067.3	2209.0	1711.2	2183.0	2208.0	1075.0
Indicator value	1.8	0.9	1.9	1.9	2.6	1.7	0.8	2.9

Licensee Comments: none

Scrams with Loss of Normal Heat Removal



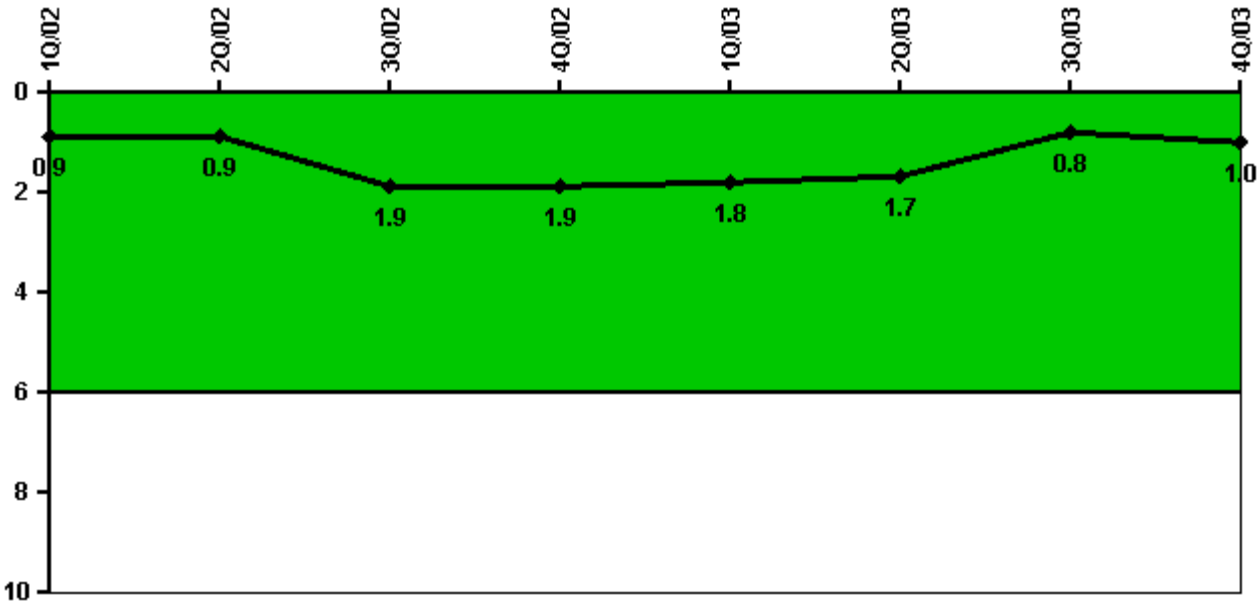
Thresholds: White > 2.0 Yellow > 10.0 Red > 20.0

Notes

Scrams with Loss of Normal Heat Removal	1Q/02	2Q/02	3Q/02	4Q/02	1Q/03	2Q/03	3Q/03	4Q/03
Scrams	0	0	0	0	0	0	0	1.0
Indicator value	2.0	1.0	1.0	1.0	0	0	0	1.0

Licensee Comments: none

Unplanned Power Changes per 7000 Critical Hrs



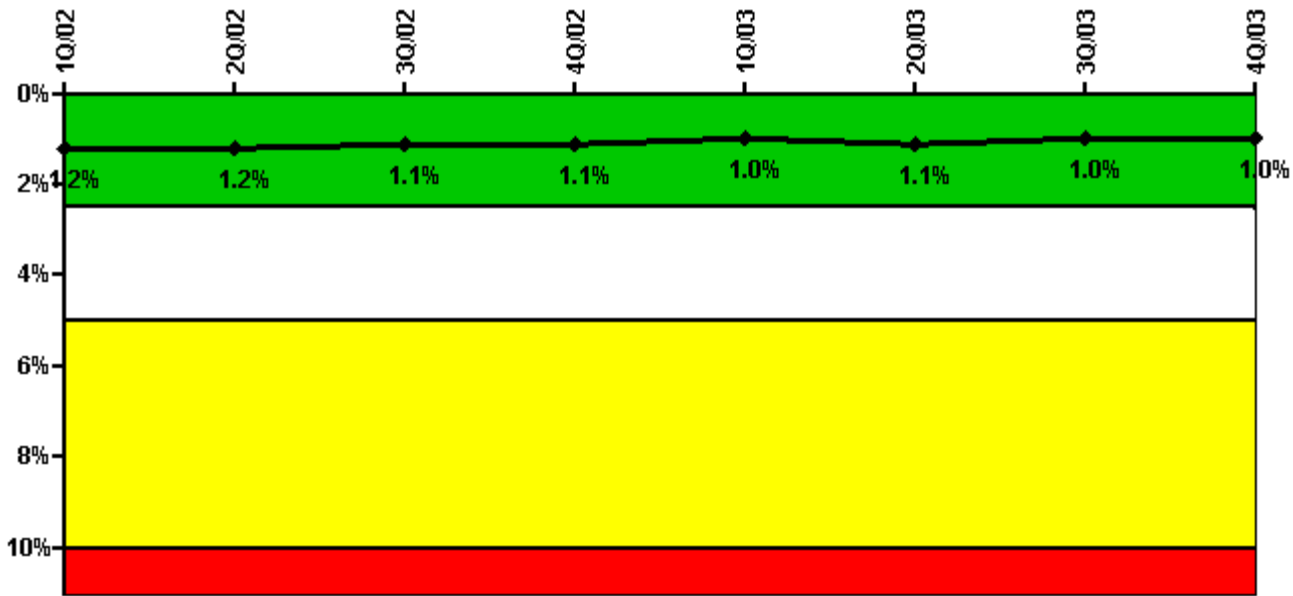
Thresholds: White > 6.0

Notes

Unplanned Power Changes per 7000 Critical Hrs	1Q/02	2Q/02	3Q/02	4Q/02	1Q/03	2Q/03	3Q/03	4Q/03
Unplanned power changes	0	1.0	1.0	0	0	1.0	0	0
Critical hours	1112.3	1993.6	2067.3	2209.0	1711.2	2183.0	2208.0	1075.0
Indicator value	0.9	0.9	1.9	1.9	1.8	1.7	0.8	1.0

Licensee Comments: none

Safety System Unavailability, Emergency AC Power



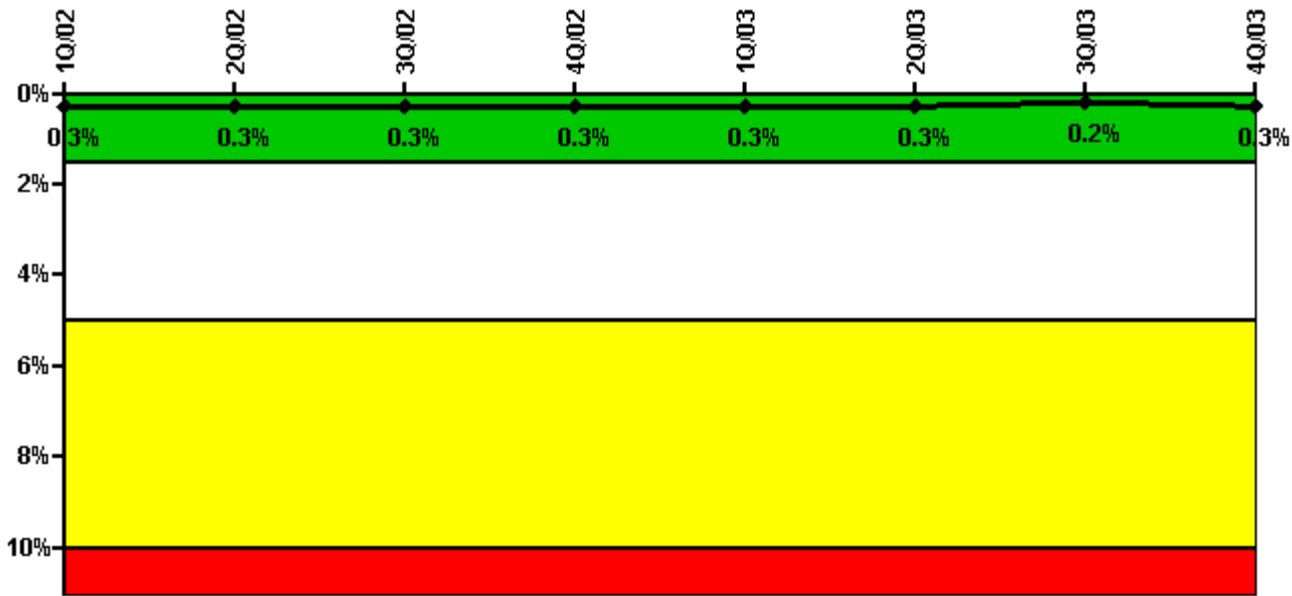
Thresholds: White > 2.5% Yellow > 5.0% Red > 10.0%

Notes

Safety System Unavailability, Emergency AC Power	1Q/02	2Q/02	3Q/02	4Q/02	1Q/03	2Q/03	3Q/03	4Q/03
Train 1								
Planned unavailable hours	9.47	3.29	33.37	16.72	2.49	22.88	9.60	3.63
Unplanned unavailable hours	19.19	0	10.68	17.81	0	27.86	0	0
Fault exposure hours	0	0	0	0	0	0	0	0
Effective Reset hours	0	0	0	0	0	0	0	0
Required hours	1783.66	2183.00	2208.00	2209.00	2073.86	2183.00	2208.00	1498.80
Train 2								
Planned unavailable hours	14.64	20.72	24.09	22.13	13.91	16.50	21.92	17.51
Unplanned unavailable hours	0	0	0	27.66	0	0	0	0
Fault exposure hours	0	0	0	0	0	0	0	0
Effective Reset hours	0	0	0	0	0	0	0	0
Required hours	1592.81	2183.00	2208.00	2209.00	1872.00	2183.00	2208.00	1918.75
Indicator value	1.2%	1.2%	1.1%	1.1%	1.0%	1.1%	1.0%	1.0%

Licensee Comments: none

Safety System Unavailability, High Pressure Injection System (HPSI)



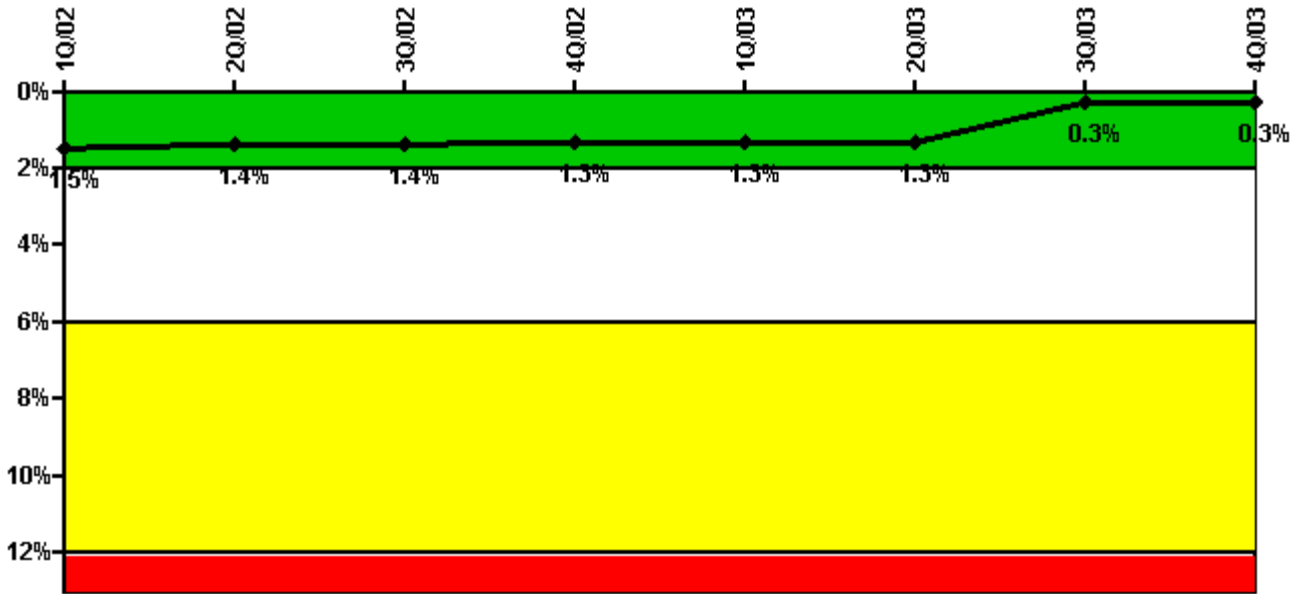
Thresholds: White > 1.5% Yellow > 5.0% Red > 10.0%

Notes

Safety System Unavailability, High Pressure Injection System (HPSI)	1Q/02	2Q/02	3Q/02	4Q/02	1Q/03	2Q/03	3Q/03	4Q/03
Train 1								
Planned unavailable hours	0.51	1.67	0.45	15.76	4.40	0.60	2.00	8.20
Unplanned unavailable hours	0	0	0	0	0	0	0	2.00
Fault exposure hours	0	0	0	0	0	0	0	2.00
Effective Reset hours	0	0	0	0	0	0	0	0
Required hours	1194.56	2032.12	2208.00	2205.00	1767.00	2183.00	2208.00	1198.00
Train 2								
Planned unavailable hours	23.46	12.32	8.61	6.02	1.00	4.20	7.60	0.90
Unplanned unavailable hours	0	0	0	0	0	0	0	0
Fault exposure hours	0	0	0	0	0	0	0	0
Effective Reset hours	0	0	0	0	0	0	0	0
Required hours	1194.56	2032.12	2208.00	2209.00	1767.00	2183.00	2208.00	1198.00
Indicator value	0.3%	0.3%	0.3%	0.3%	0.3%	0.3%	0.2%	0.3%

Licensee Comments: none

Safety System Unavailability, Heat Removal System (AFW)



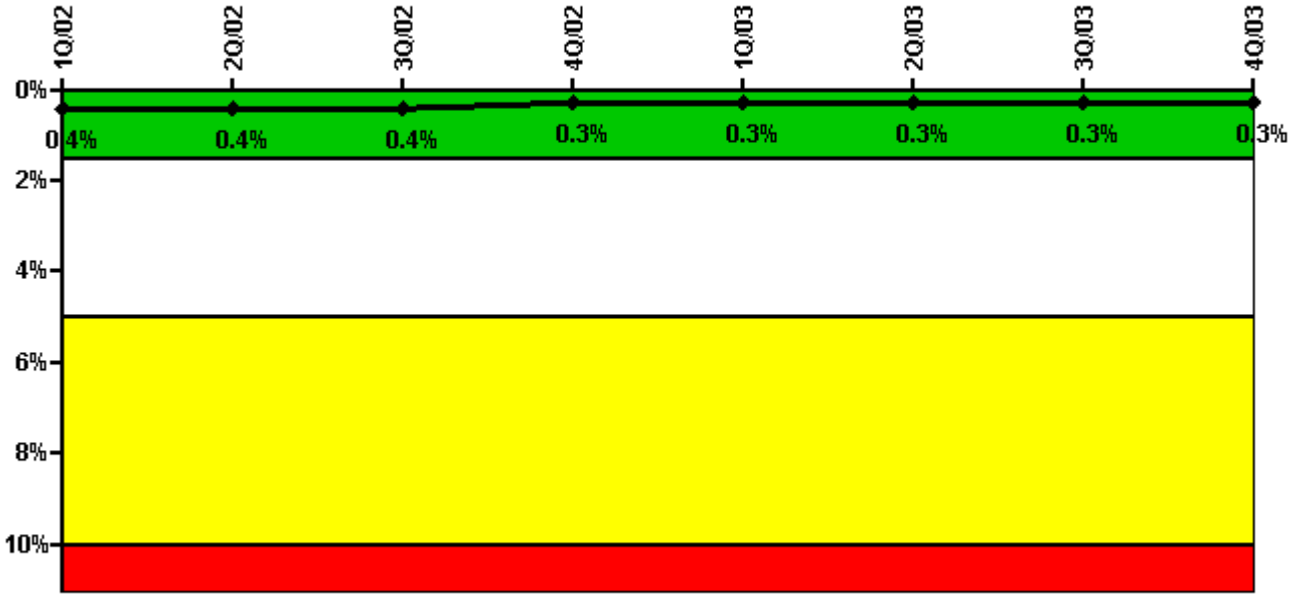
Thresholds: White > 2.0% Yellow > 6.0% Red > 12.0%

Notes

Safety System Unavailability, Heat Removal System (AFW)	1Q/02	2Q/02	3Q/02	4Q/02	1Q/03	2Q/03	3Q/03	4Q/03
Train 1								
Planned unavailable hours	12.50	0	1.00	0	0	25.50	0	0
Unplanned unavailable hours	0	0	0	0	0	0	0	0
Fault exposure hours	0	0	0	0	0	0	0	0
Effective Reset hours	0	0	0	0	0	0	0	0
Required hours	1112.30	1973.50	2067.30	2209.00	1769.00	2183.00	2208.00	1183.30
Train 2								
Planned unavailable hours	0	0	0	0	9.00	9.50	1.00	0
Unplanned unavailable hours	0	0	0	0	0	0	0	0
Fault exposure hours	0	0	0	0	0	0	0	0
Effective Reset hours	0	0	0	0	0	0	0	0
Required hours	1112.30	1973.50	2067.30	2209.00	1769.00	2183.00	2208.00	1183.30
Train 3								
Planned unavailable hours	21.00	0	0	0	13.75	2.50	19.00	0
Unplanned unavailable hours	1.00	0	0	0	0	0	0	33.75
Fault exposure hours	0	0	0	0	0	0	0	0
Effective Reset hours	0	0	0	0	0	0	0	0
Required hours	1112.30	1973.50	2067.30	2209.00	1769.00	2183.00	2208.00	1183.30
Indicator value	1.5%	1.4%	1.4%	1.3%	1.3%	1.3%	0.3%	0.3%

Licensee Comments: none

Safety System Unavailability, Residual Heat Removal System



Thresholds: White > 1.5% Yellow > 5.0% Red > 10.0%

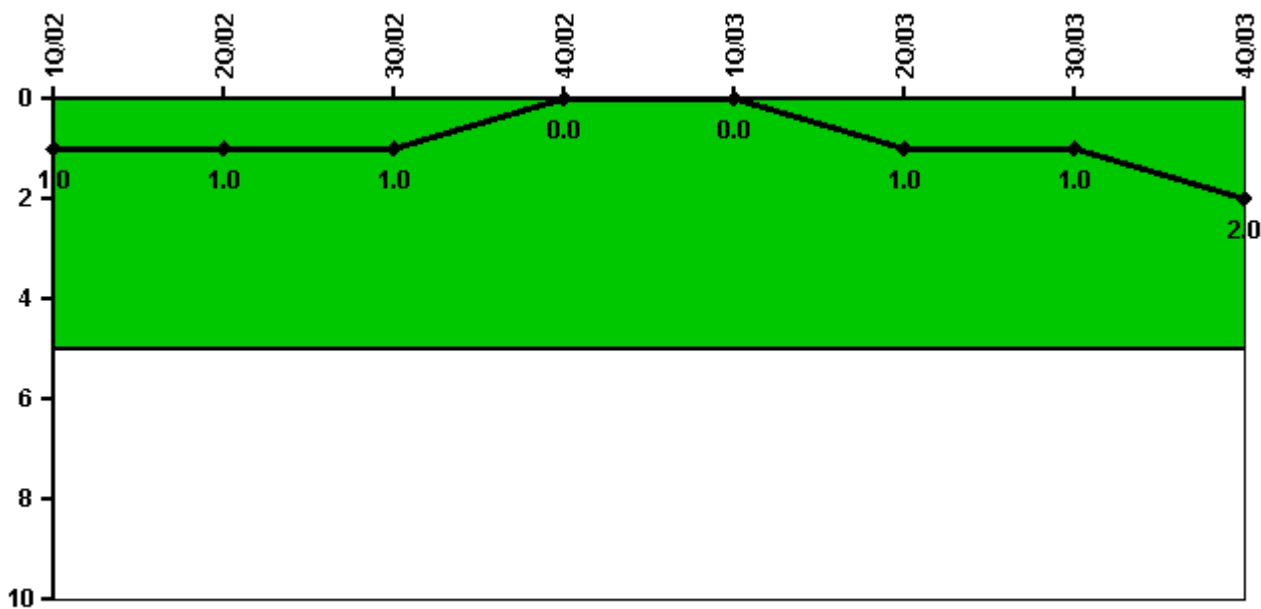
Notes

Safety System Unavailability, Residual Heat Removal System	10/02	20/02	30/02	40/02	10/03	20/03	30/03	40/03
Train 1								
Planned unavailable hours	2.96	11.01	7.96	66.32	3.50	5.10	32.80	3.90
Unplanned unavailable hours	0	0	0	0	0	0	0	0
Fault exposure hours	0	0	0	0	0	0	0	0
Effective Reset hours	0	0	0	0	0	0	0	0
Required hours	1181.10	2032.12	2208.00	2209.00	1706.00	2183.00	2208.00	1169.30
Train 2								
Planned unavailable hours	5.11	27.88	5.62	9.50	2.20	6.80	47.50	3.90
Unplanned unavailable hours	0	0	0	0	0	0	0	0
Fault exposure hours	0	0	0	0	0	0	0	0
Effective Reset hours	0	0	0	0	0	0	0	0
Required hours	1181.10	2032.12	2208.00	2209.00	1706.00	2183.00	2208.00	1169.30
Train 3								
Planned unavailable hours	0	0	0	0	0	0	0	0
Unplanned unavailable hours	0	0	0	0	0	0	0	0.30
Fault exposure hours	0	0	0	0	0	0	0	0
Effective Reset hours	0	0	0	0	0	0	0	0
Required hours	971.30	131.00	0	2209.00	454.00	0	0	1048.40
Train 4								
Planned unavailable hours	0	0	0	0	0	0	0	0

Unplanned unavailable hours	0	0	0	0	0	0	0	0
Fault exposure hours	0	0	0	0	0	0	0	0
Effective Reset hours	0	0	0	0	0	0	0	0
Required hours	971.30	131.00	0	2209.00	454.00	0	0	1048.40
Indicator value	0.4%	0.4%	0.4%	0.3%	0.3%	0.3%	0.3%	0.3%

Licensee Comments: none

Safety System Functional Failures (PWR)



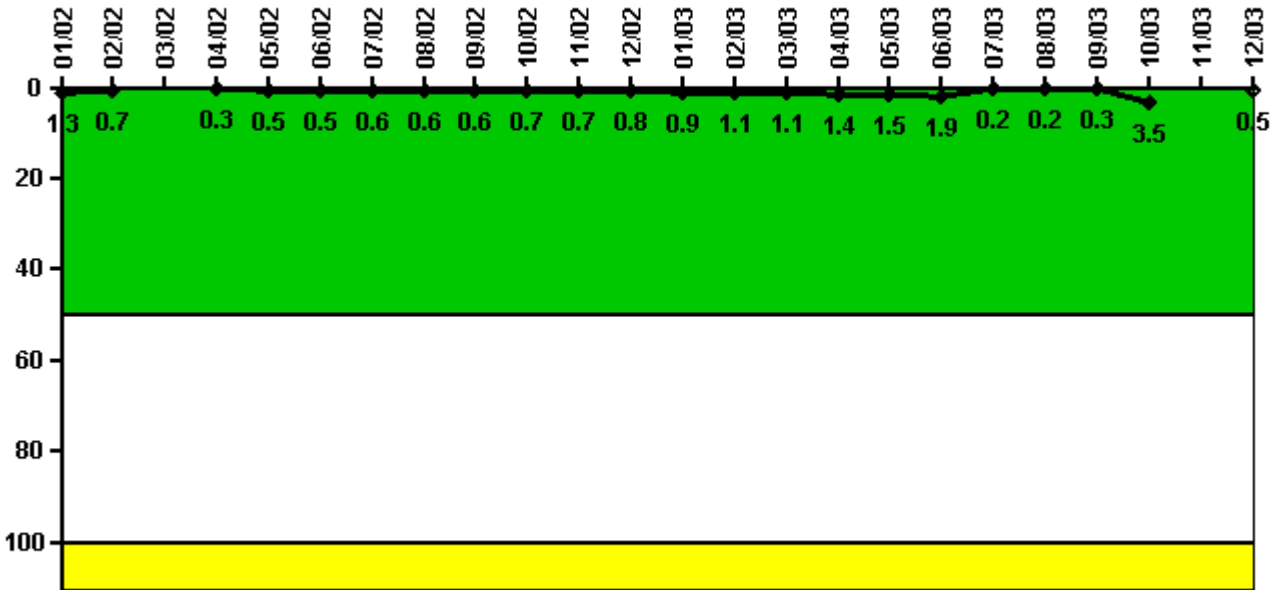
Thresholds: White > 5.0

Notes

Safety System Functional Failures (PWR)	1Q/02	2Q/02	3Q/02	4Q/02	1Q/03	2Q/03	3Q/03	4Q/03
Safety System Functional Failures	0	0	0	0	0	1	0	1
Indicator value	1	1	1	0	0	1	1	2

Licensee Comments: none

Reactor Coolant System Activity



Thresholds: White > 50.0 Yellow > 100.0

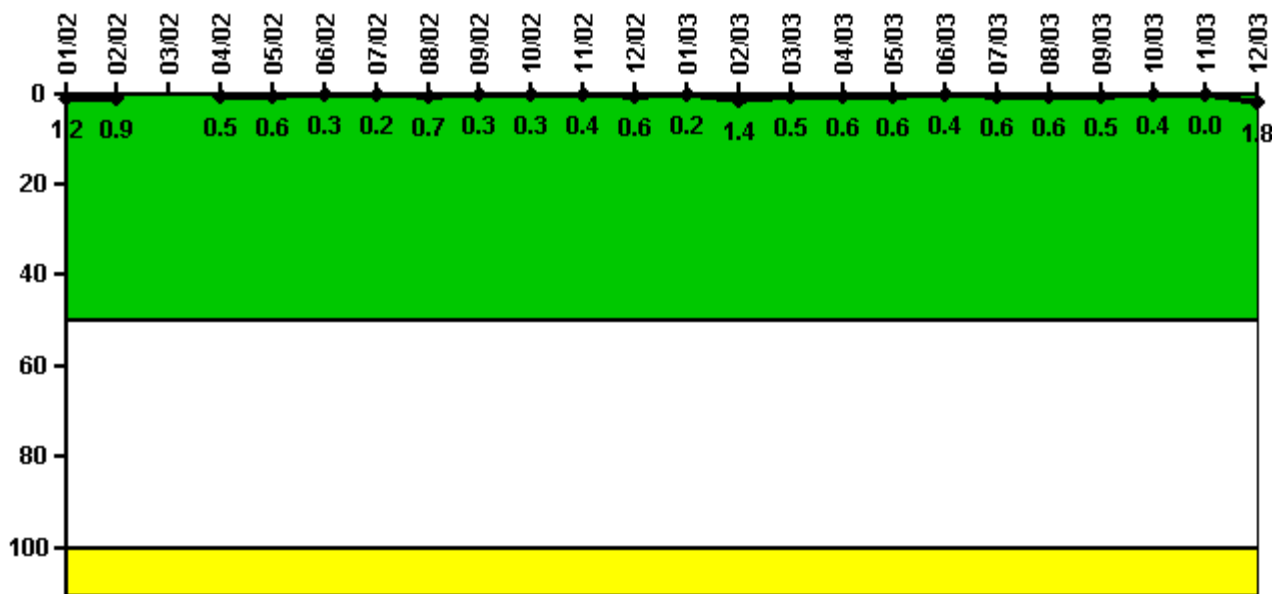
Notes

Reactor Coolant System Activity	1/02	2/02	3/02	4/02	5/02	6/02	7/02	8/02	9/02	10/02	11/02	12/02
Maximum activity	0.012600	0.007420	N/A	0.003230	0.004840	0.005450	0.005520	0.006330	0.006400	0.006910	0.006970	0.008180
Technical specification limit	1.0	1.0	1.0	1.0	1.0	1.0	1.0	1.0	1.0	1.0	1.0	1.0
Indicator value	1.3	0.7	N/A	0.3	0.5	0.5	0.6	0.6	0.6	0.7	0.7	0.8

Reactor Coolant System Activity	1/03	2/03	3/03	4/03	5/03	6/03	7/03	8/03	9/03	10/03	11/03	12/03
Maximum activity	0.009280	0.010700	0.011100	0.013800	0.014800	0.019100	0.001540	0.001770	0.002530	0.034700	N/A	0.004580
Technical specification limit	1.0	1.0	1.0	1.0	1.0	1.0	1.0	1.0	1.0	1.0	1.0	1.0
Indicator value	0.9	1.1	1.1	1.4	1.5	1.9	0.2	0.2	0.3	3.5	N/A	0.5

Licensee Comments: none

Reactor Coolant System Leakage



Thresholds: White > 50.0 Yellow > 100.0

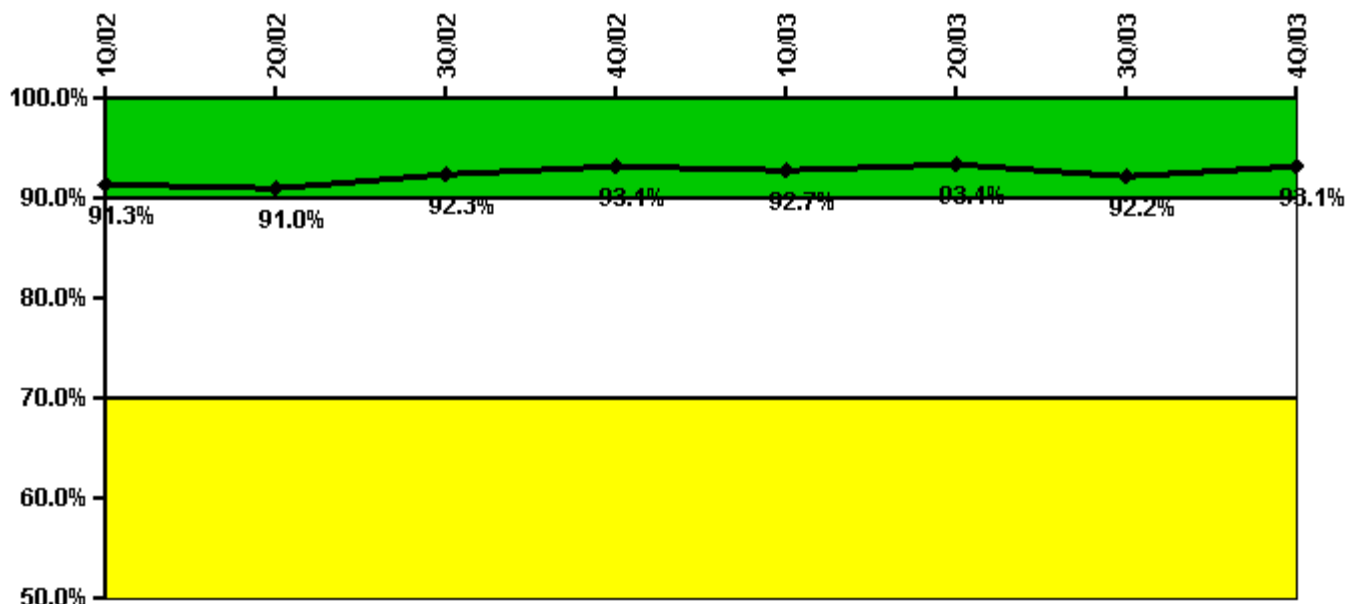
Notes

Reactor Coolant System Leakage	1/02	2/02	3/02	4/02	5/02	6/02	7/02	8/02	9/02	10/02	11/02	12/02
Maximum leakage	0.124	0.094	N/A	0.054	0.055	0.031	0.022	0.070	0.026	0.027	0.043	0.057
Technical specification limit	10.0	10.0	10.0	10.0	10.0	10.0	10.0	10.0	10.0	10.0	10.0	10.0
Indicator value	1.2	0.9	N/A	0.5	0.6	0.3	0.2	0.7	0.3	0.3	0.4	0.6

Reactor Coolant System Leakage	1/03	2/03	3/03	4/03	5/03	6/03	7/03	8/03	9/03	10/03	11/03	12/03
Maximum leakage	0.017	0.142	0.051	0.055	0.058	0.037	0.061	0.064	0.049	0.039	0	0.182
Technical specification limit	10.0	10.0	10.0	10.0	10.0	10.0	10.0	10.0	10.0	10.0	10.0	10.0
Indicator value	0.2	1.4	0.5	0.6	0.6	0.4	0.6	0.6	0.5	0.4	0	1.8

Licensee Comments: none

Drill/Exercise Performance



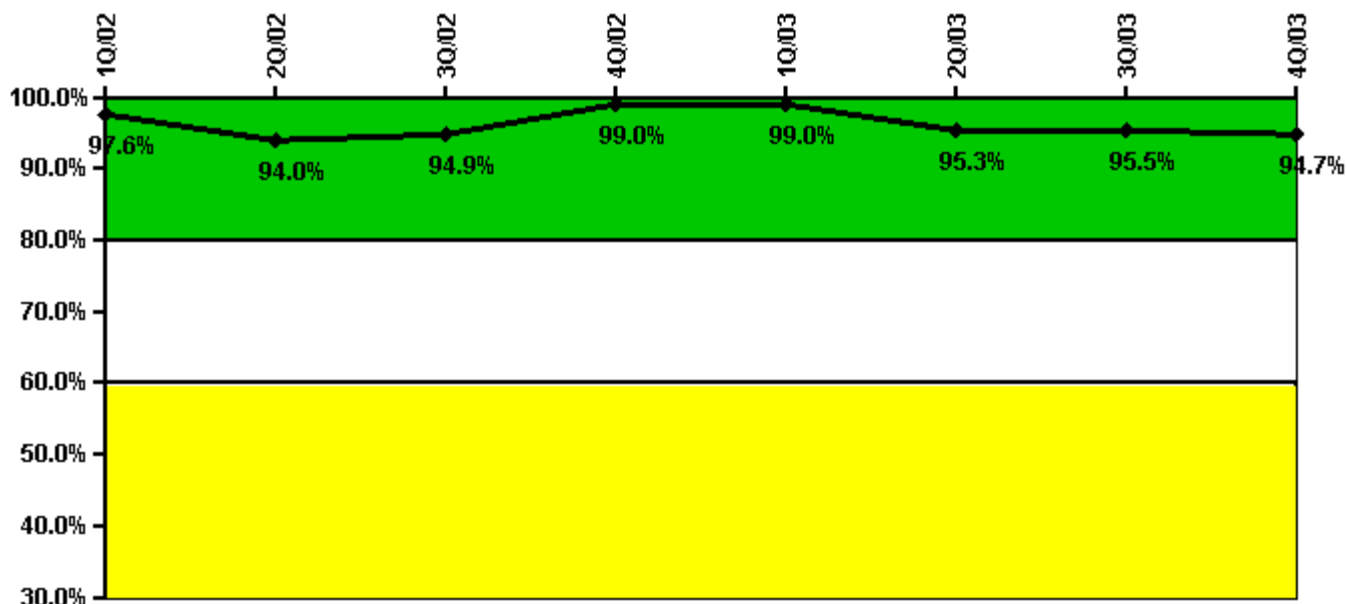
Thresholds: White < 90.0% Yellow < 70.0%

Notes

Drill/Exercise Performance	1Q/02	2Q/02	3Q/02	4Q/02	1Q/03	2Q/03	3Q/03	4Q/03
Successful opportunities	0	30.0	36.0	45.0	1.0	66.0	38.0	27.0
Total opportunities	0	32.0	37.0	47.0	2.0	70.0	44.0	29.0
Indicator value	91.3%	91.0%	92.3%	93.1%	92.7%	93.4%	92.2%	93.1%

Licensee Comments: none

ERO Drill Participation



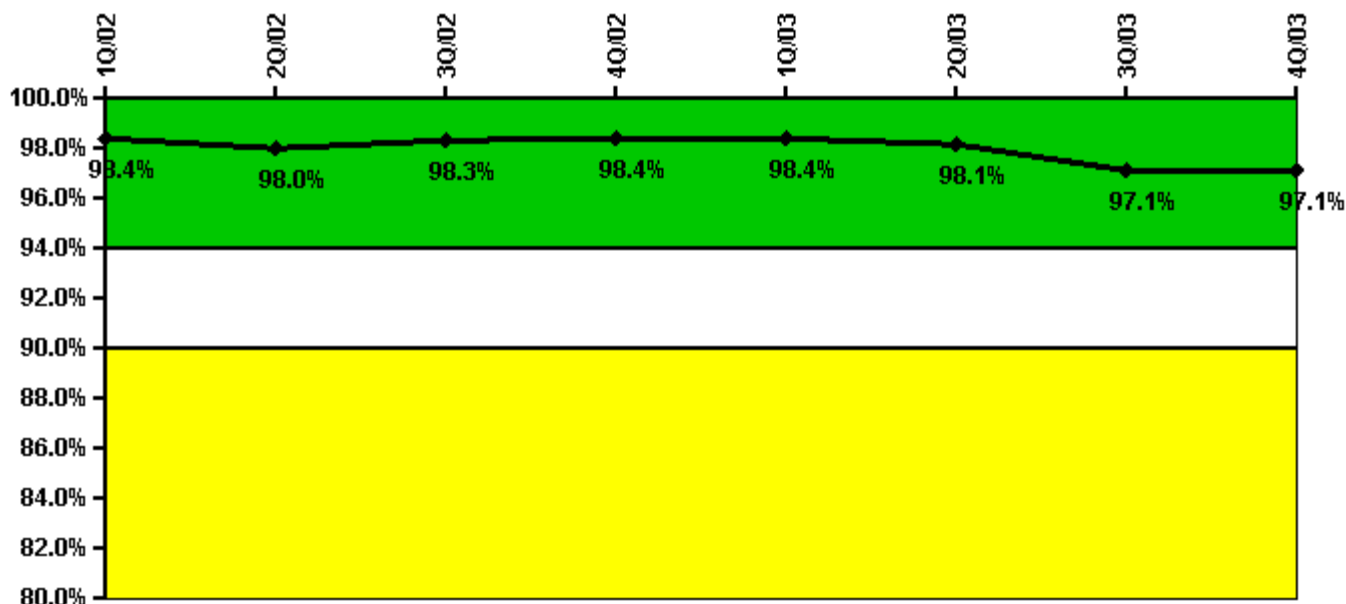
Thresholds: White < 80.0% Yellow < 60.0%

Notes

ERO Drill Participation	1Q/02	2Q/02	3Q/02	4Q/02	1Q/03	2Q/03	3Q/03	4Q/03
Participating Key personnel	83.0	79.0	93.0	100.0	101.0	122.0	127.0	126.0
Total Key personnel	85.0	84.0	98.0	101.0	102.0	128.0	133.0	133.0
Indicator value	97.6%	94.0%	94.9%	99.0%	99.0%	95.3%	95.5%	94.7%

Licensee Comments: none

Alert & Notification System



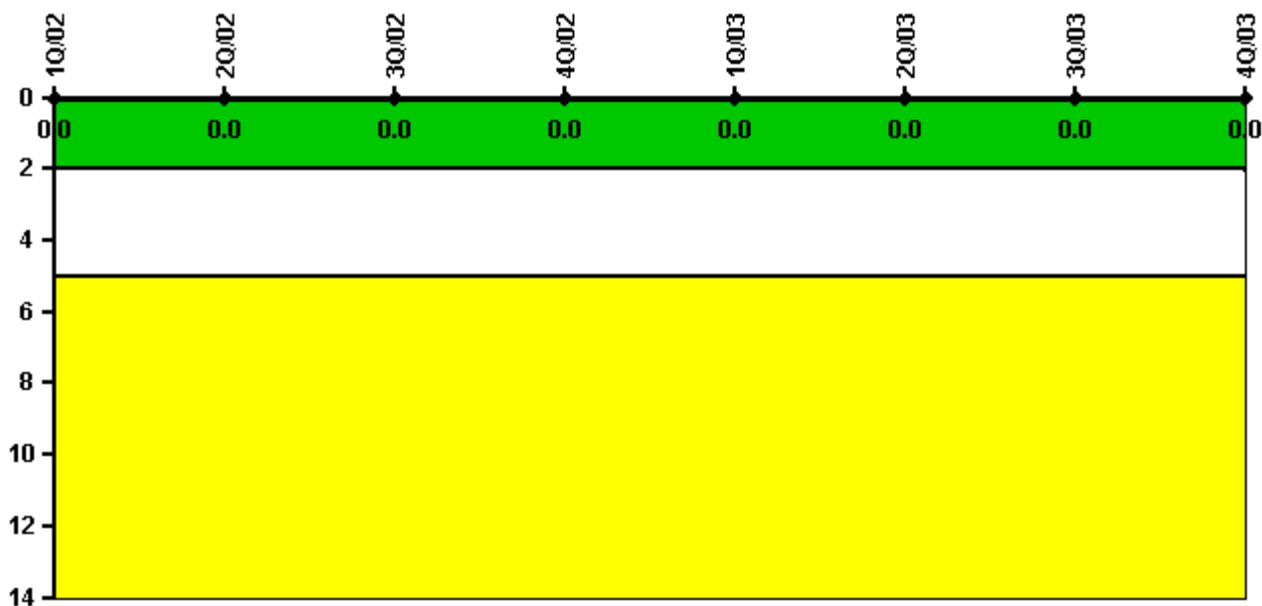
Thresholds: White < 94.0% Yellow < 90.0%

Notes

Alert & Notification System	1Q/02	2Q/02	3Q/02	4Q/02	1Q/03	2Q/03	3Q/03	4Q/03
Successful siren-tests	314	312	468	314	314	308	453	314
Total sirens-tests	318	318	477	318	318	318	477	318
Indicator value	98.4%	98.0%	98.3%	98.4%	98.4%	98.1%	97.1%	97.1%

Licensee Comments: none

Occupational Exposure Control Effectiveness



Thresholds: White > 2.0 Yellow > 5.0

Notes

Occupational Exposure Control Effectiveness	1Q/02	2Q/02	3Q/02	4Q/02	1Q/03	2Q/03	3Q/03	4Q/03
High radiation area occurrences	0	0	0	0	0	0	0	0
Very high radiation area occurrences	0	0	0	0	0	0	0	0
Unintended exposure occurrences	0	0	0	0	0	0	0	0
Indicator value	0	0	0	0	0	0	0	0

Licensee Comments: none

RETS/ODCM Radiological Effluent



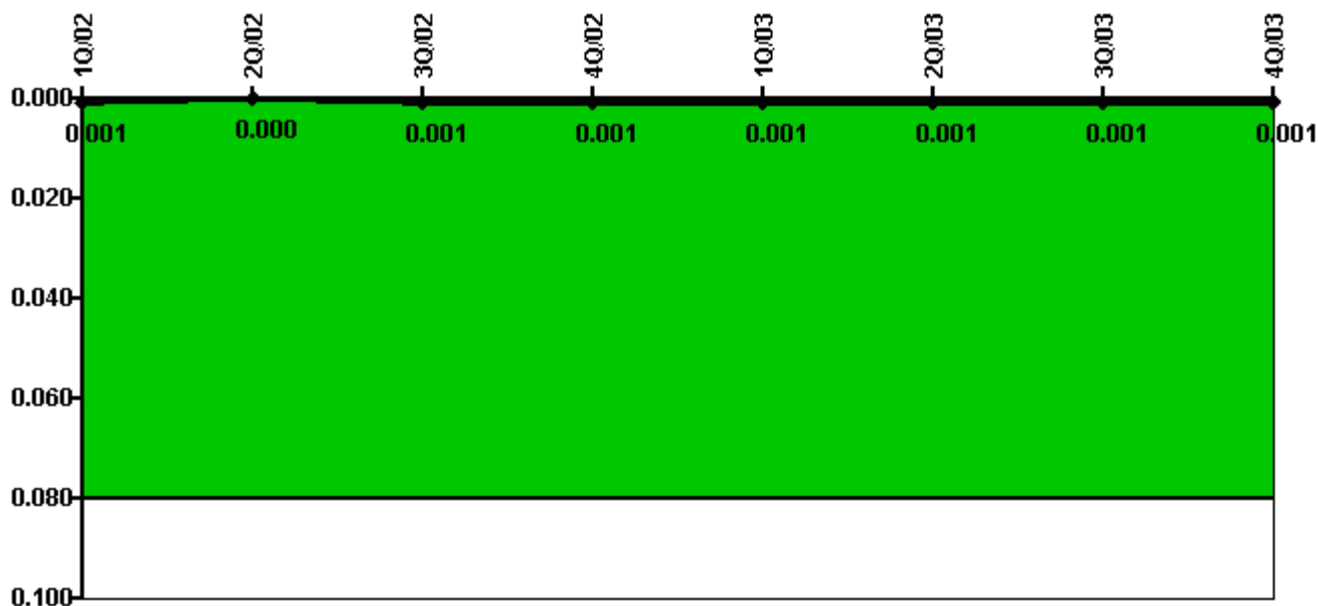
Thresholds: White > 1.0 Yellow > 3.0

Notes

RETS/ODCM Radiological Effluent	1Q/02	2Q/02	3Q/02	4Q/02	1Q/03	2Q/03	3Q/03	4Q/03
RETS/ODCM occurrences	0	0	0	0	0	0	0	0
Indicator value	0	0	0	0	0	0	0	0

Licensee Comments: none

Protected Area Security Performance Index



Thresholds: White > 0.080

Notes

Protected Area Security Performance Index	1Q/02	2Q/02	3Q/02	4Q/02	1Q/03	2Q/03	3Q/03	4Q/03
IDS compensatory hours	4.80	0	0	0	22.20	0	0	0
CCTV compensatory hours	0.1	5.2	21.4	0	0	0	0	1.1
IDS normalization factor	2.50	2.50	2.50	2.50	2.50	2.50	2.50	2.50
CCTV normalization factor	2.1	2.1	2.1	2.1	2.1	2.1	2.1	2.1
Index Value	0.001	0	0.001	0.001	0.001	0.001	0.001	0.001

Licensee Comments: none

Personnel Screening Program



Thresholds: White > 2.0 Yellow > 5.0

Notes

Personnel Screening Program	1Q/02	2Q/02	3Q/02	4Q/02	1Q/03	2Q/03	3Q/03	4Q/03
Program failures	0	0	0	0	0	0	0	0
Indicator value	0	0	0	0	0	0	0	0

Licensee Comments: none

FFD/Personnel Reliability



Thresholds: White > 2.0 Yellow > 5.0

Notes

FFD/Personnel Reliability	1Q/02	2Q/02	3Q/02	4Q/02	1Q/03	2Q/03	3Q/03	4Q/03
Program Failures	0	0	0	0	0	0	0	0
Indicator value	0	0	0	0	0	0	0	0

Licensee Comments: none

▲ [PI Summary](#) | [Inspection Findings Summary](#) | [Reactor Oversight Process](#)

Last Modified: January 23, 2004