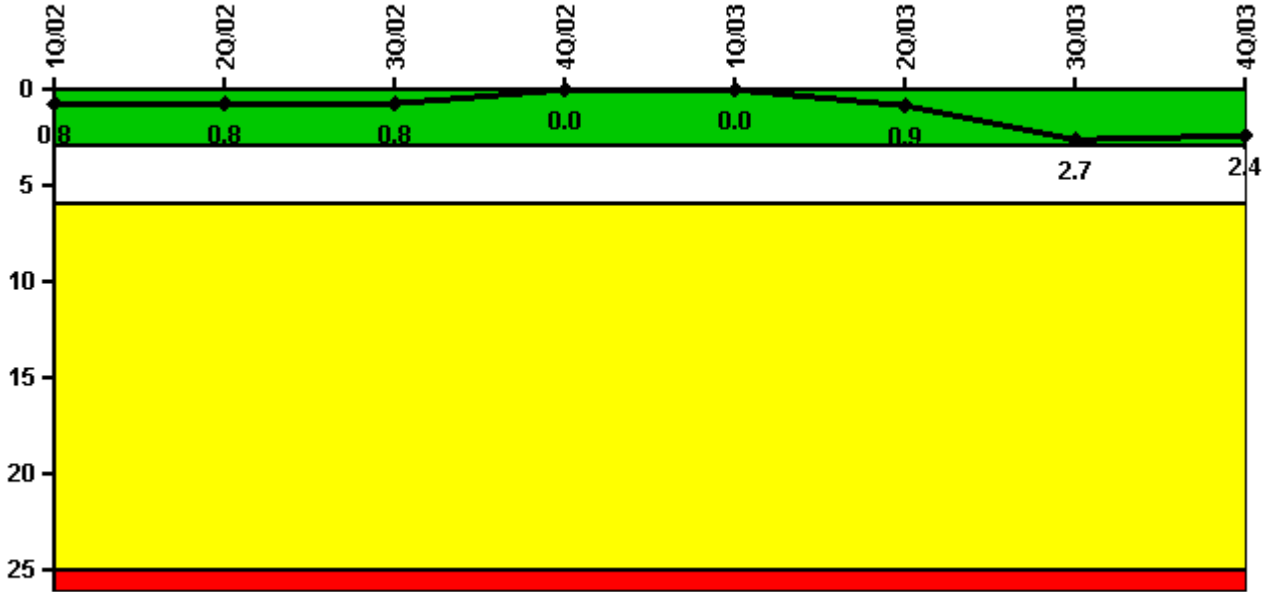


Indian Point 2

4Q/2003 Performance Indicators

Licensee's General Comments: none

Unplanned Scrams per 7000 Critical Hrs



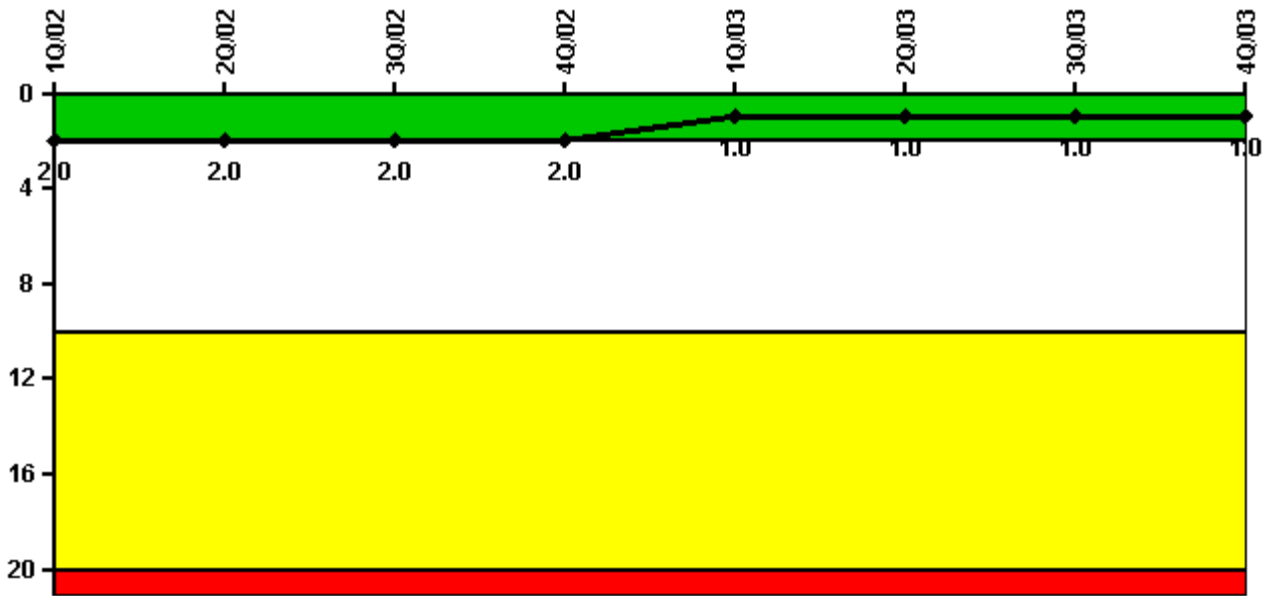
Thresholds: White > 3.0 Yellow > 6.0 Red > 25.0

Notes

Unplanned Scrams per 7000 Critical Hrs	1Q/02	2Q/02	3Q/02	4Q/02	1Q/03	2Q/03	3Q/03	4Q/03
Unplanned scrams	0	0	0	0	0	1.0	2.0	0
Critical hours	2160.0	2183.0	2208.0	1449.9	2160.0	2149.7	2146.2	2209.0
Indicator value	0.8	0.8	0.8	0	0	0.9	2.7	2.4

Licensee Comments: none

Scrams with Loss of Normal Heat Removal



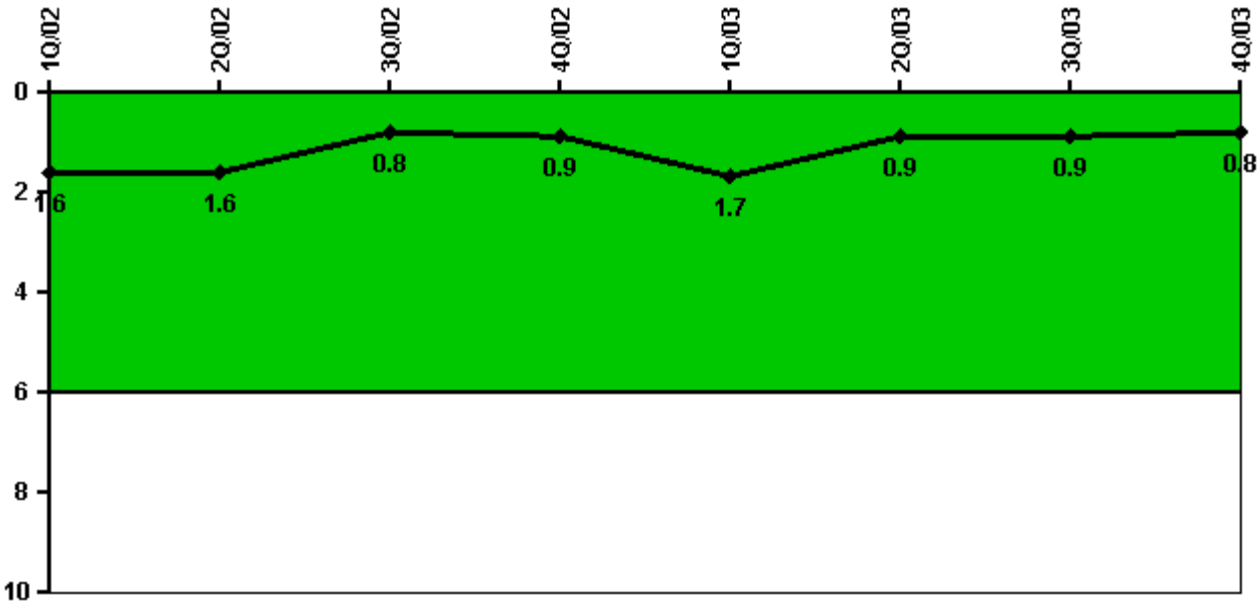
Thresholds: White > 2.0 Yellow > 10.0 Red > 20.0

Notes

Scrams with Loss of Normal Heat Removal	1Q/02	2Q/02	3Q/02	4Q/02	1Q/03	2Q/03	3Q/03	4Q/03
Scrams	0	0	0	0	0	0	0	0
Indicator value	2.0	2.0	2.0	2.0	1.0	1.0	1.0	1.0

Licensee Comments: none

Unplanned Power Changes per 7000 Critical Hrs



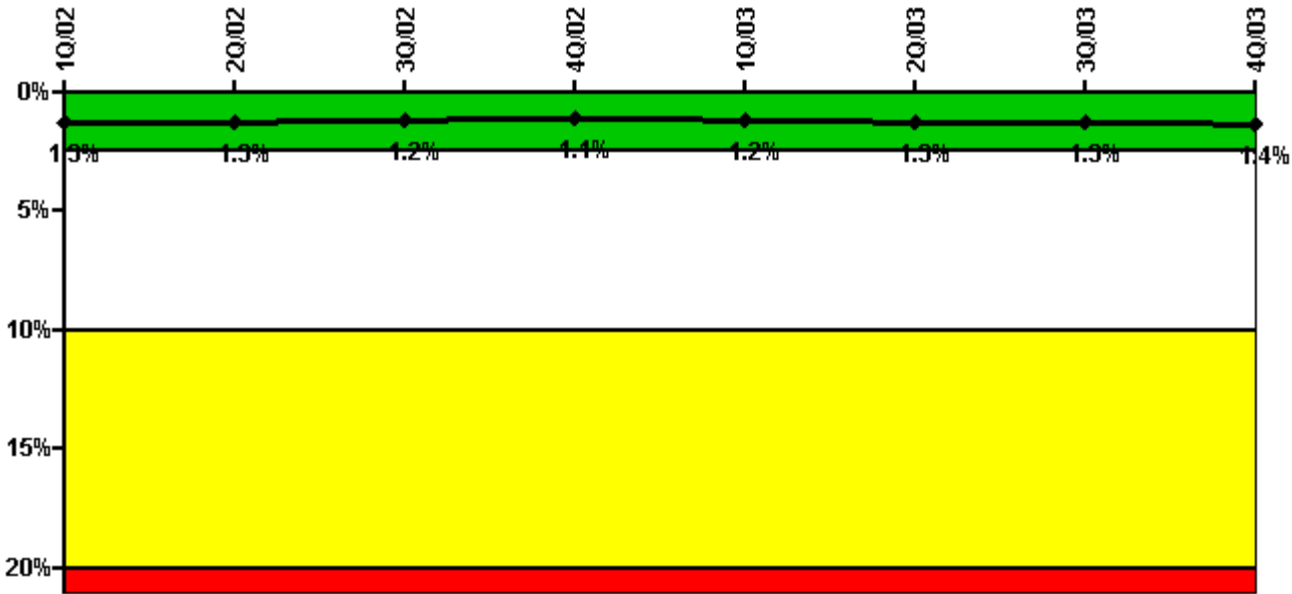
Thresholds: White > 6.0

Notes

Unplanned Power Changes per 7000 Critical Hrs	1Q/02	2Q/02	3Q/02	4Q/02	1Q/03	2Q/03	3Q/03	4Q/03
Unplanned power changes	0	1.0	0	0	1.0	0	0	0
Critical hours	2160.0	2183.0	2208.0	1449.9	2160.0	2149.7	2146.2	2209.0
Indicator value	1.6	1.6	0.8	0.9	1.7	0.9	0.9	0.8

Licensee Comments: none

Safety System Unavailability, Emergency AC Power, >2EDG



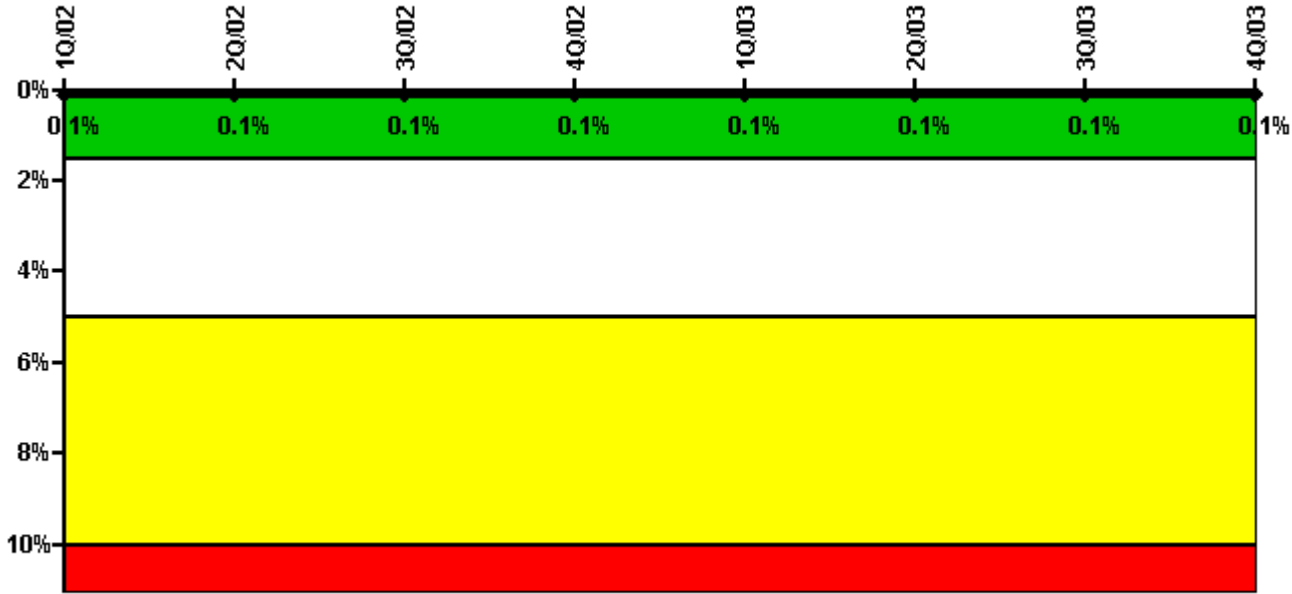
Thresholds: White > 2.5% Yellow > 10.0% Red > 20.0%

Notes

Safety System Unavailability, Emergency AC Power, >2EDG	1Q/02	2Q/02	3Q/02	4Q/02	1Q/03	2Q/03	3Q/03	4Q/03
Train 1								
Planned unavailable hours	0	21.17	4.88	0	68.27	11.35	0	0
Unplanned unavailable hours	0.08	0	0	23.97	0	0	6.57	0
Fault exposure hours	0	0	0	0	0	0	0	0
Effective Reset hours	0	0	0	0	0	0	0	0
Required hours	2160.00	2183.00	2208.00	2209.00	2160.00	2183.00	2208.00	2209.00
Train 2								
Planned unavailable hours	34.80	0	0	0	2.00	21.25	0	25.52
Unplanned unavailable hours	18.67	0	29.45	4.57	0	9.42	0	0
Fault exposure hours	0	0	0	0	0	0	0	0
Effective Reset hours	0	0	0	0	0	0	0	0
Required hours	2160.00	2183.00	2208.00	2209.00	2160.00	2183.00	2208.00	2209.00
Train 3								
Planned unavailable hours	39.72	0	0	0.60	0.22	46.45	0	22.90
Unplanned unavailable hours	23.08	0	0	28.85	46.16	0	0	0
Fault exposure hours	0	0	0	0	0	0	0	0
Effective Reset hours	0	0	0	0	0	0	0	0
Required hours	2160.00	2183.00	2208.00	2209.00	2160.00	2183.00	2208.00	2209.00
Indicator value	1.3%	1.3%	1.2%	1.1%	1.2%	1.3%	1.3%	1.4%

Licensee Comments: none

Safety System Unavailability, High Pressure Injection System (HPSI)



Thresholds: White > 1.5% Yellow > 5.0% Red > 10.0%

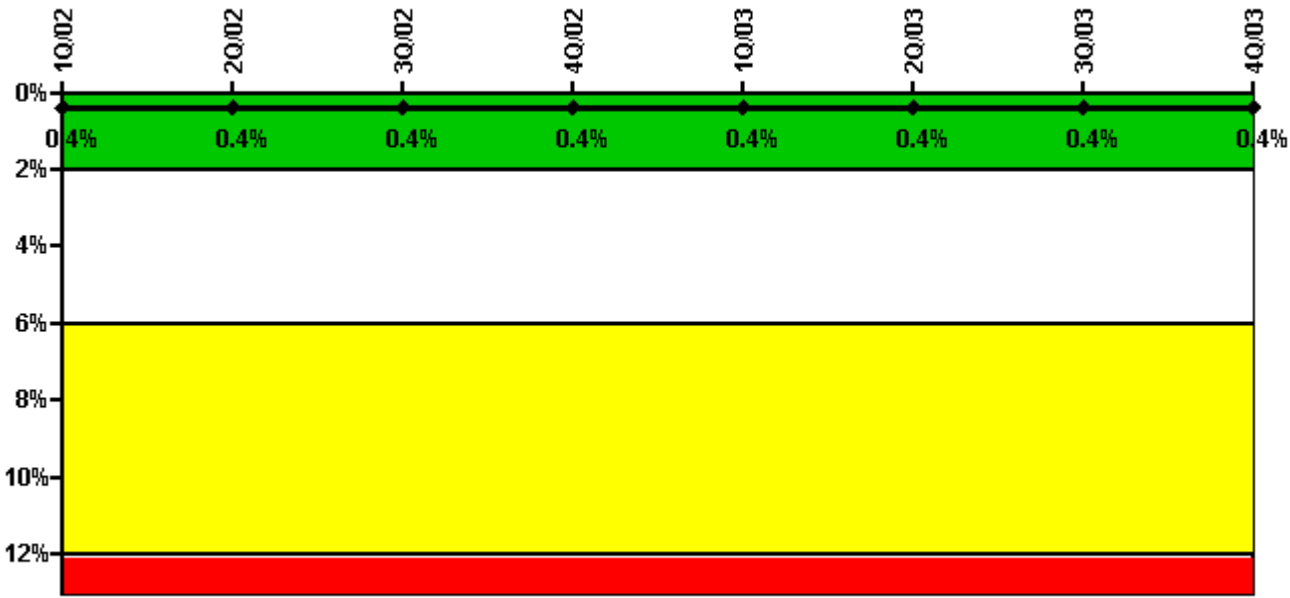
Notes

Safety System Unavailability, High Pressure Injection System (HPSI)	1Q/02	2Q/02	3Q/02	4Q/02	1Q/03	2Q/03	3Q/03	4Q/03
Train 1								
Planned unavailable hours	0.68	0	0	0	6.00	0	12.00	0
Unplanned unavailable hours	0	0	0.25	0	0	0	0	0
Fault exposure hours	0	0	0	0	0	0	0	0
Effective Reset hours	0	0	0	0	0	0	0	0
Required hours	2160.00	2183.00	2208.00	1449.87	2160.00	2183.00	2146.00	2209.00
Train 2								
Planned unavailable hours	0.28	0	1.43	0	0.50	4.76	0	3.00
Unplanned unavailable hours	0	13.30	0	0	0	0	0	4.50
Fault exposure hours	0	0	0	0	0	0	0	0
Effective Reset hours	0	0	0	0	0	0	0	0
Required hours	2160.00	2183.00	2208.00	1449.87	2160.00	2183.00	2146.00	2209.00
Train 3								
Planned unavailable hours	0.41	0	0	0	7.20	0	2.82	2.00
Unplanned unavailable hours	0	0	0	0	0	0	0	6.00
Fault exposure hours	0	0	0	0	0	0	0	0
Effective Reset hours	0	0	0	0	0	0	0	0
Required hours	2160.00	2183.00	2208.00	1449.87	2160.00	2183.00	2146.00	2209.00

Indicator value	0.1%	0.1%	0.1%	0.1%	0.1%	0.1%	0.1%	0.1%
-----------------	------	------	------	------	------	------	------	------

Licensee Comments: none

Safety System Unavailability, Heat Removal System (AFW)



Thresholds: White > 2.0% Yellow > 6.0% Red > 12.0%

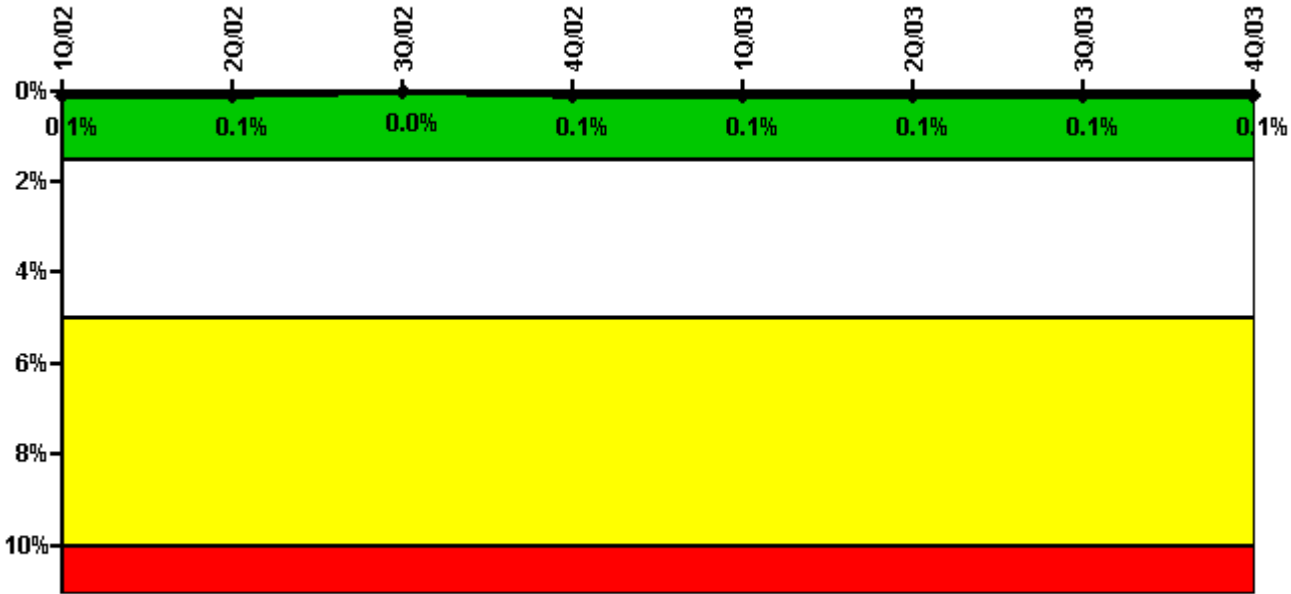
Notes

Safety System Unavailability, Heat Removal System (AFW)	1Q/02	2Q/02	3Q/02	4Q/02	1Q/03	2Q/03	3Q/03	4Q/03
Train 1								
Planned unavailable hours	0.71	0	3.56	6.75	18.75	16.38	1.50	13.60
Unplanned unavailable hours	33.75	7.82	0	0	0	0	0.16	0
Fault exposure hours	0	0	0	0	0	0	0	0
Effective Reset hours	0	0	0	0	0	0	0	0
Required hours	2160.00	2183.00	2208.00	1449.87	2160.00	2149.70	2146.00	2209.00
Train 2								
Planned unavailable hours	2.38	10.00	14.32	0.50	19.63	13.25	2.50	4.30
Unplanned unavailable hours	0	0	0.33	0	0	0	0	7.27
Fault exposure hours	0	0	0	0	0	0	0	0
Effective Reset hours	0	0	0	0	0	0	0	0
Required hours	2160.00	2183.00	2208.00	1449.87	2160.00	2149.70	2146.00	2209.00
Train 3								
Planned unavailable hours	0.33	0.51	8.08	0.38	4.50	9.43	0	11.60
Unplanned unavailable hours	0	0	0	0	0	0	0	0

Fault exposure hours	0	0	0	0	0	0	0	0
Effective Reset hours	0	0	0	0	0	0	0	0
Required hours	2160.00	2183.00	2208.00	1449.87	2160.00	2149.70	2146.00	2209.00
Indicator value	0.4%	0.4%	0.4%	0.4%	0.4%	0.4%	0.4%	0.4%

Licensee Comments: none

Safety System Unavailability, Residual Heat Removal System



Thresholds: White > 1.5% Yellow > 5.0% Red > 10.0%

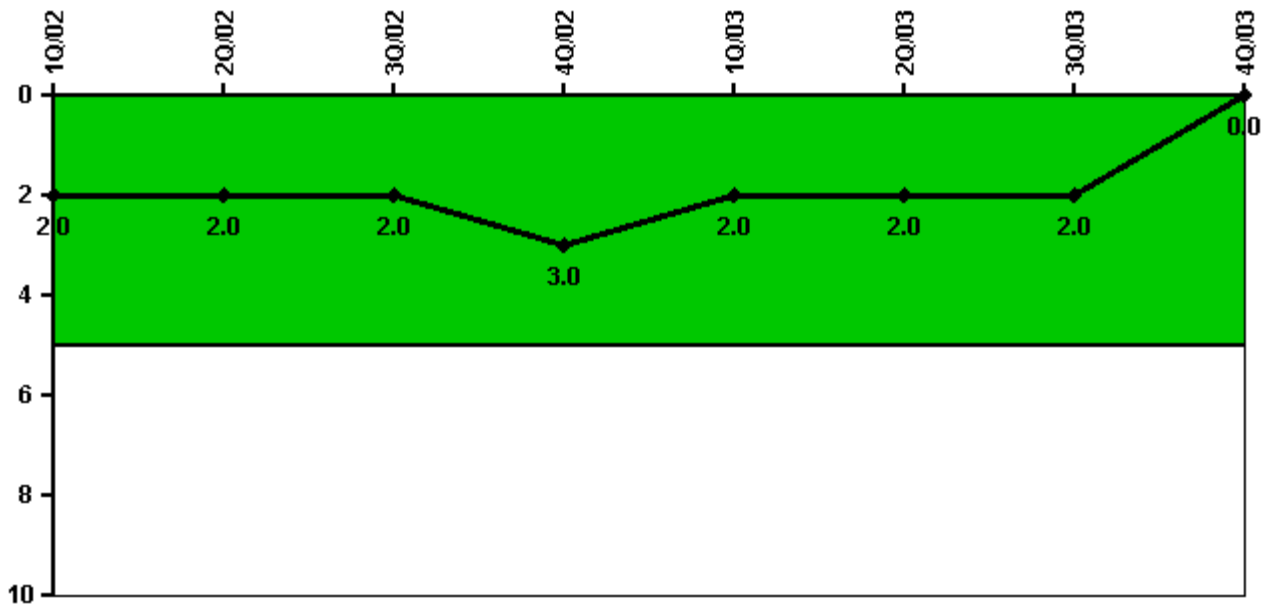
Notes

Safety System Unavailability, Residual Heat Removal System	1Q/02	2Q/02	3Q/02	4Q/02	1Q/03	2Q/03	3Q/03	4Q/03
Train 1								
Planned unavailable hours	0.45	0	0.32	0	5.50	0	0.33	0
Unplanned unavailable hours	0	0	0	19.30	0	0	0	0
Fault exposure hours	0	0	0	0	0	0	0	0
Effective Reset hours	0	0	0	0	0	0	0	0
Required hours	2160.00	2183.00	2208.00	2042.60	2160.00	2183.00	2208.00	2209.00
Train 2								
Planned unavailable hours	0.86	0	0.57	0	5.80	0.56	0	0
Unplanned unavailable hours	0	0	0	0	24.00	0	0	0
Fault exposure hours	0	0	0	0	3.00	0	0	0
Effective Reset hours	0	0	0	0	0	0	0	0

Required hours	2160.00	2183.00	2208.00	2042.60	2160.00	2183.00	2208.00	2209.00
Train 3								
Planned unavailable hours	0	0	0	0	0	0	0	0
Unplanned unavailable hours	0	0	0.25	0	0	0	0	0
Fault exposure hours	0	0	0	0	0	0	0	0
Effective Reset hours	0	0	0	0	0	0	0	0
Required hours	2160.00	2183.00	2208.00	1449.87	2160.00	2183.00	2146.00	2209.00
Train 4								
Planned unavailable hours	0	0	0	0	0	0	0	0
Unplanned unavailable hours	0	0	0	0	24.00	0	0	0
Fault exposure hours	0	0	0	0	3.00	0	0	0
Effective Reset hours	0	0	0	0	0	0	0	0
Required hours	2160.00	2183.00	2208.00	1449.87	2160.00	2183.00	2146.00	2209.00
Indicator value	0.1%	0.1%	0%	0.1%	0.1%	0.1%	0.1%	0.1%

Licensee Comments: none

Safety System Functional Failures (PWR)



Thresholds: White > 5.0

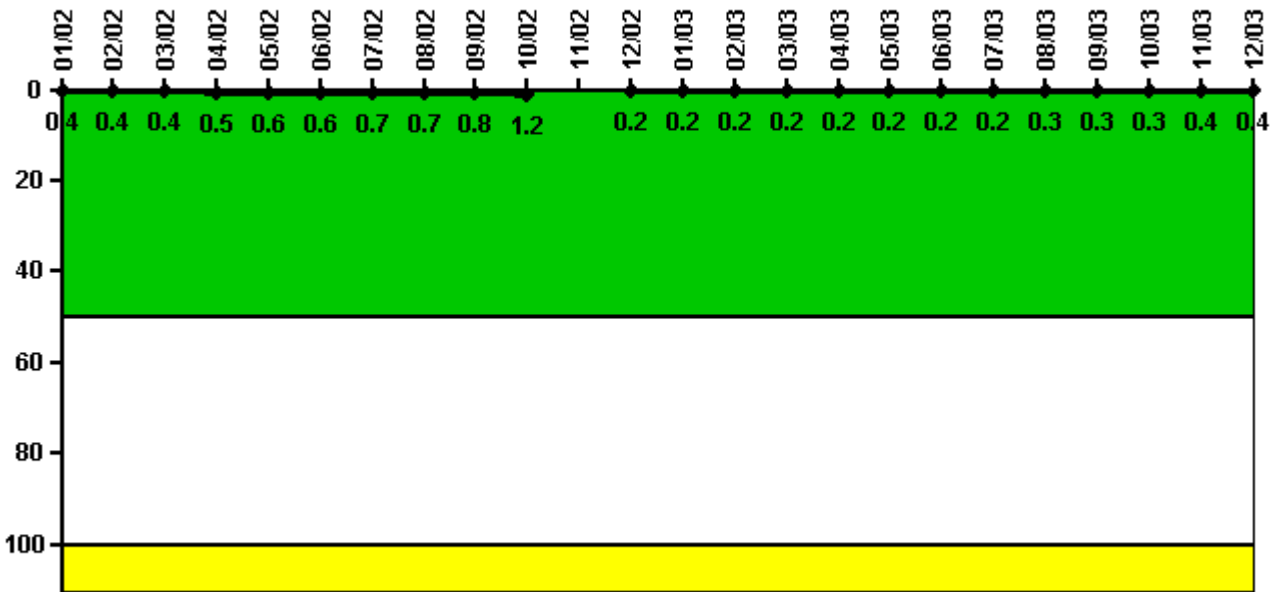
Notes

Safety System Functional Failures (PWR)	1Q/02	2Q/02	3Q/02	4Q/02	1Q/03	2Q/03	3Q/03	4Q/03
Safety System Functional Failures	1	0	0	2	0	0	0	0

Indicator value	2	2	2	3	2	2	2	0

Licensee Comments: none

Reactor Coolant System Activity



Thresholds: White > 50.0 Yellow > 100.0

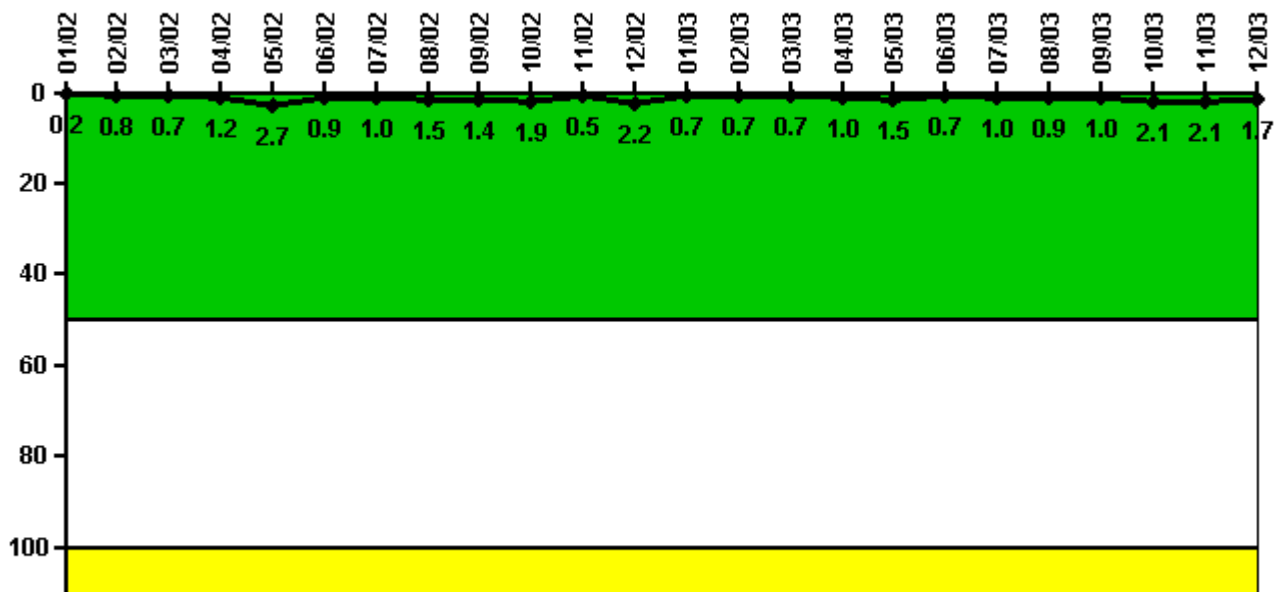
Notes

Reactor Coolant System Activity	1/02	2/02	3/02	4/02	5/02	6/02	7/02	8/02	9/02	10/02	11/02	12/02
Maximum activity	0.003800	0.004300	0.004300	0.004900	0.005800	0.006400	0.006600	0.007200	0.007700	0.012000	N/A	0.001600
Technical specification limit	1.0	1.0	1.0	1.0	1.0	1.0	1.0	1.0	1.0	1.0	1.0	1.0
Indicator value	0.4	0.4	0.4	0.5	0.6	0.6	0.7	0.7	0.8	1.2	N/A	0.2

Reactor Coolant System Activity	1/03	2/03	3/03	4/03	5/03	6/03	7/03	8/03	9/03	10/03	11/03	12/03
Maximum activity	0.001800	0.001900	0.002100	0.002100	0.002200	0.002300	0.002200	0.002800	0.003100	0.003330	0.004160	0.004110
Technical specification limit	1.0	1.0	1.0	1.0	1.0	1.0	1.0	1.0	1.0	1.0	1.0	1.0
Indicator value	0.2	0.2	0.2	0.2	0.2	0.2	0.2	0.3	0.3	0.3	0.4	0.4

Licensee Comments: none

Reactor Coolant System Leakage



Thresholds: White > 50.0 Yellow > 100.0

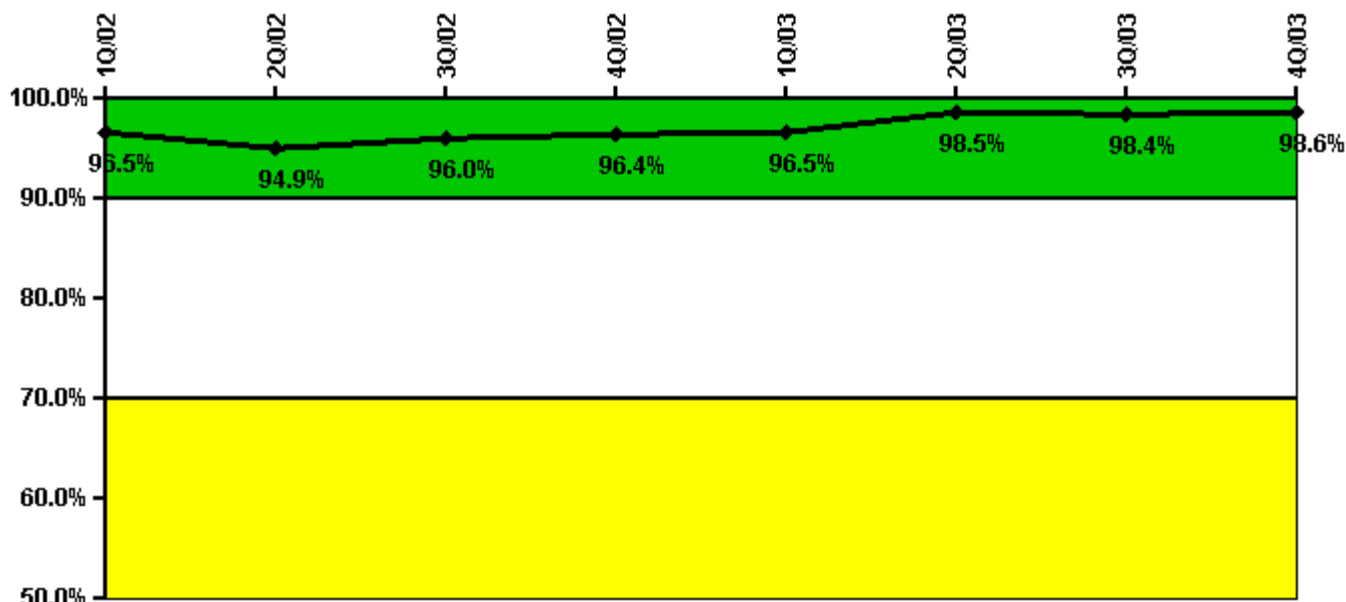
Notes

Reactor Coolant System Leakage	1/02	2/02	3/02	4/02	5/02	6/02	7/02	8/02	9/02	10/02	11/02	12/02
Maximum leakage	0.019	0.077	0.068	0.118	0.269	0.090	0.099	0.154	0.143	0.190	0.052	0.224
Technical specification limit	10.0	10.0	10.0	10.0	10.0	10.0	10.0	10.0	10.0	10.0	10.0	10.0
Indicator value	0.2	0.8	0.7	1.2	2.7	0.9	1.0	1.5	1.4	1.9	0.5	2.2

Reactor Coolant System Leakage	1/03	2/03	3/03	4/03	5/03	6/03	7/03	8/03	9/03	10/03	11/03	12/03
Maximum leakage	0.067	0.070	0.070	0.102	0.148	0.075	0.097	0.093	0.096	0.211	0.211	0.168
Technical specification limit	10.0	10.0	10.0	10.0	10.0	10.0	10.0	10.0	10.0	10.0	10.0	10.0
Indicator value	0.7	0.7	0.7	1.0	1.5	0.7	1.0	0.9	1.0	2.1	2.1	1.7

Licensee Comments: none

Drill/Exercise Performance



Thresholds: White < 90.0% Yellow < 70.0%

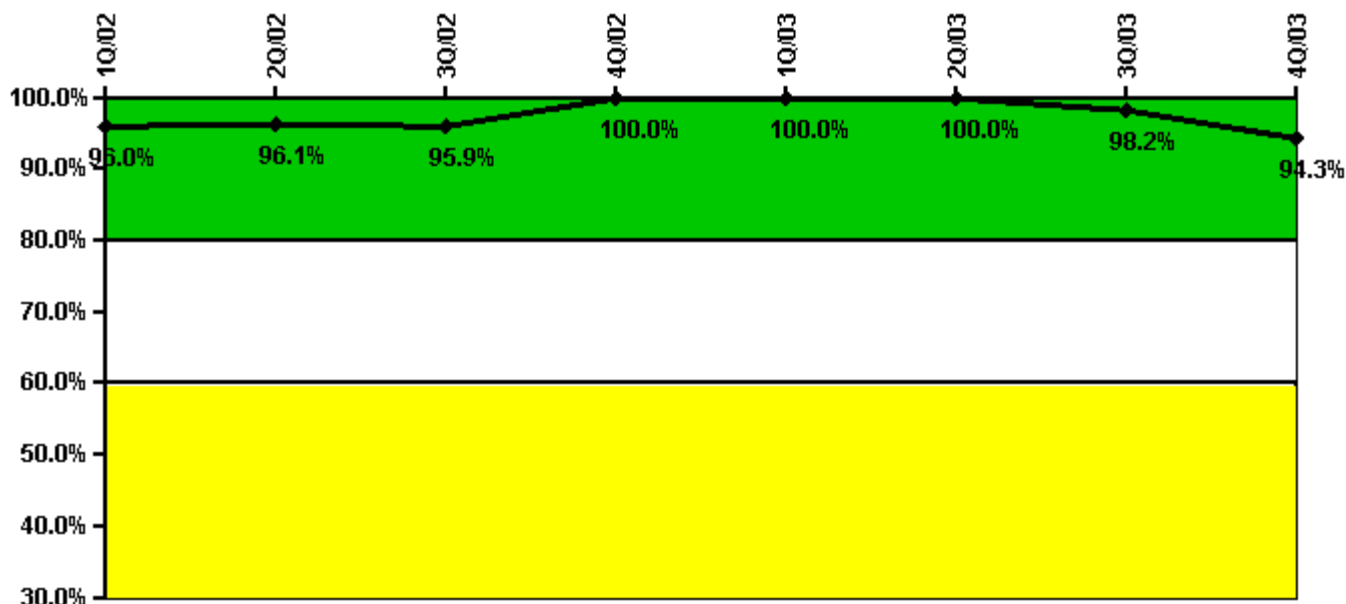
Notes

Drill/Exercise Performance	1Q/02	2Q/02	3Q/02	4Q/02	1Q/03	2Q/03	3Q/03	4Q/03
Successful opportunities	6.0	22.0	50.0	2.0	7.0	9.0	21.0	24.0
Total opportunities	6.0	24.0	50.0	2.0	7.0	9.0	21.0	24.0
Indicator value	96.5%	94.9%	96.0%	96.4%	96.5%	98.5%	98.4%	98.6%

Licensee Comments:

3Q/03: Training Department provided additional data, reflecting training performed by various key ERO Operations personnel. No change in indicator color.

ERO Drill Participation



Thresholds: White < 80.0% Yellow < 60.0%

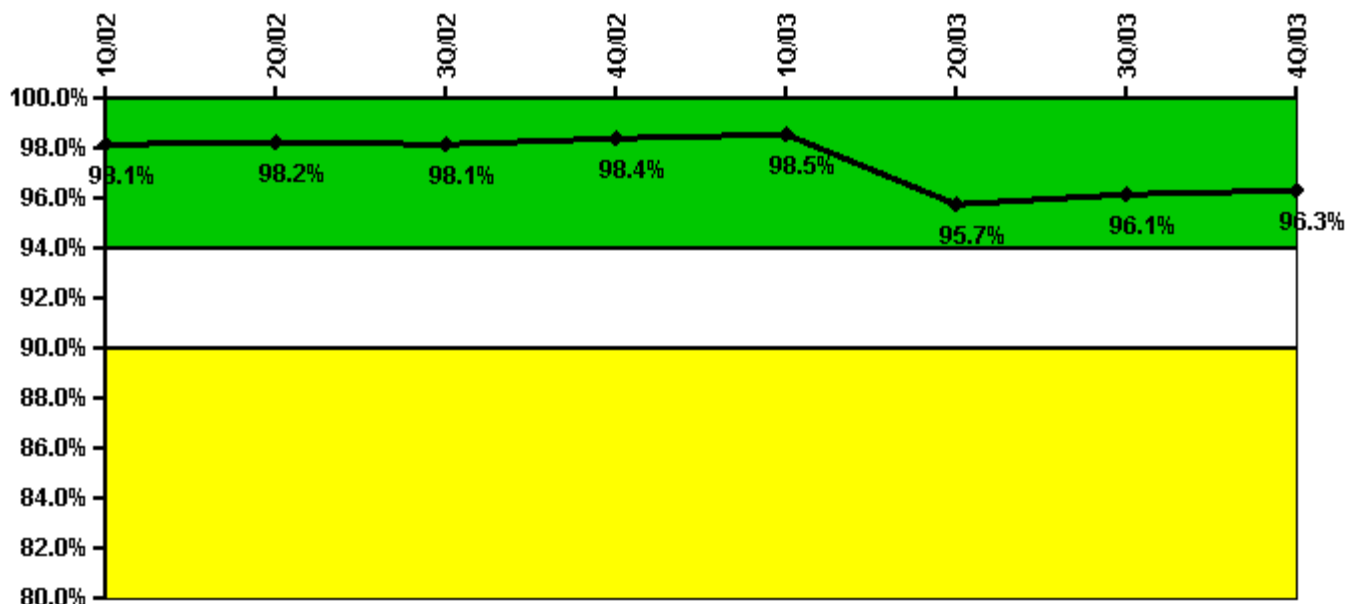
Notes

ERO Drill Participation	1Q/02	2Q/02	3Q/02	4Q/02	1Q/03	2Q/03	3Q/03	4Q/03
Participating Key personnel	48.0	49.0	47.0	50.0	53.0	53.0	55.0	50.0
Total Key personnel	50.0	51.0	49.0	50.0	53.0	53.0	56.0	53.0
Indicator value	96.0%	96.1%	95.9%	100.0%	100.0%	100.0%	98.2%	94.3%

Licensee Comments:

3Q/03: Additional data was received for training of key ERO members. This changed participation data resulting in additional qualified individual. No change in indicator color.

Alert & Notification System



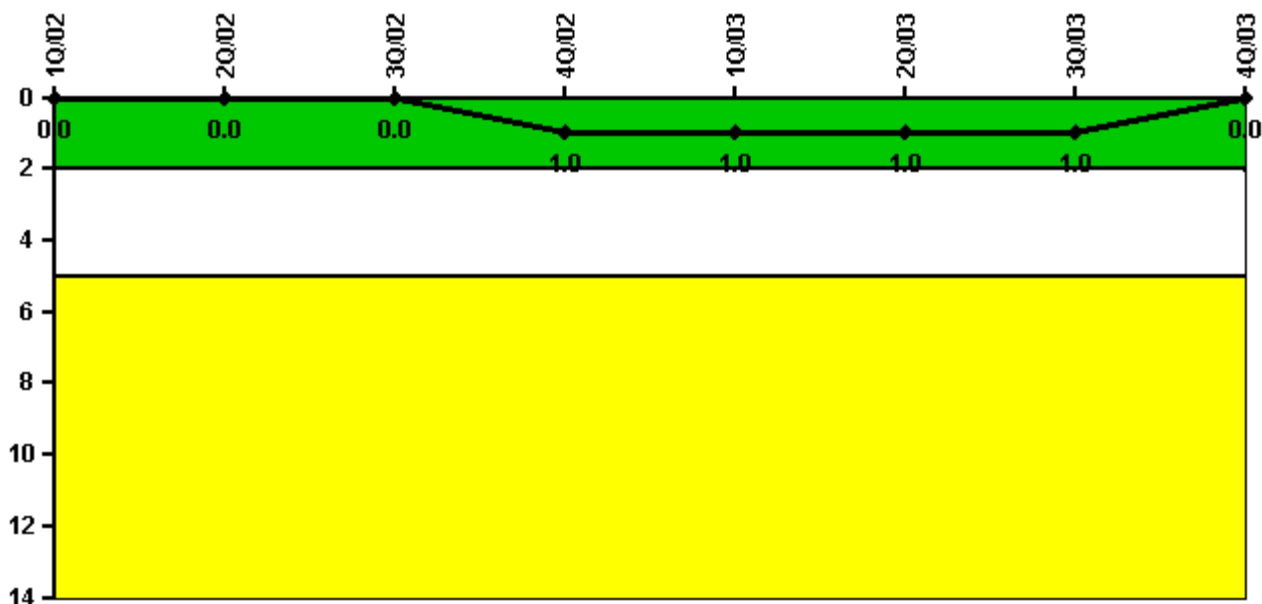
Thresholds: White < 94.0% Yellow < 90.0%

Notes

Alert & Notification System	1Q/02	2Q/02	3Q/02	4Q/02	1Q/03	2Q/03	3Q/03	4Q/03
Successful siren-tests	1003	1111	991	1267	984	1236	1805	1901
Total sirens-tests	1011	1124	1029	1277	988	1386	1857	1920
Indicator value	98.1%	98.2%	98.1%	98.4%	98.5%	95.7%	96.1%	96.3%

Licensee Comments: none

Occupational Exposure Control Effectiveness



Thresholds: White > 2.0 Yellow > 5.0

Notes

Occupational Exposure Control Effectiveness	1Q/02	2Q/02	3Q/02	4Q/02	1Q/03	2Q/03	3Q/03	4Q/03
High radiation area occurrences	0	0	0	1	0	0	0	0
Very high radiation area occurrences	0	0	0	0	0	0	0	0
Unintended exposure occurrences	0	0	0	0	0	0	0	0
Indicator value	0	0	0	1	1	1	1	0

Licensee Comments: none

RETS/ODCM Radiological Effluent



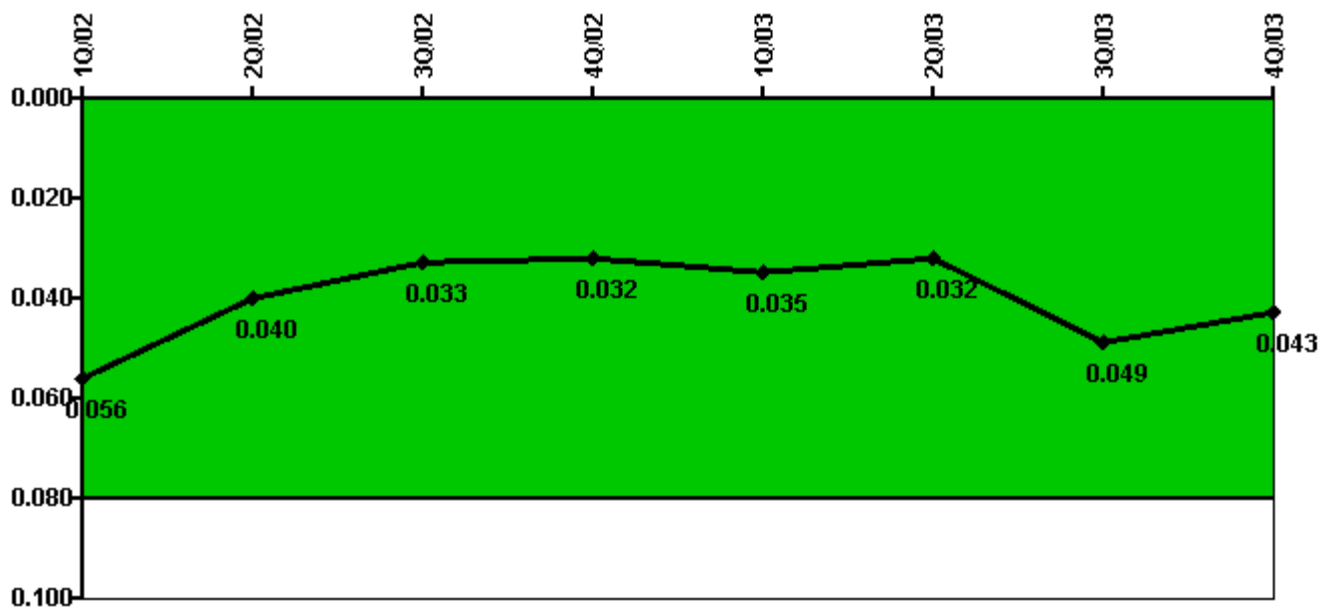
Thresholds: White > 1.0 Yellow > 3.0

Notes

RETS/ODCM Radiological Effluent	1Q/02	2Q/02	3Q/02	4Q/02	1Q/03	2Q/03	3Q/03	4Q/03
RETS/ODCM occurrences	0	0	0	0	0	0	0	0
Indicator value	0	0	0	0	0	0	0	0

Licensee Comments: none

Protected Area Security Performance Index



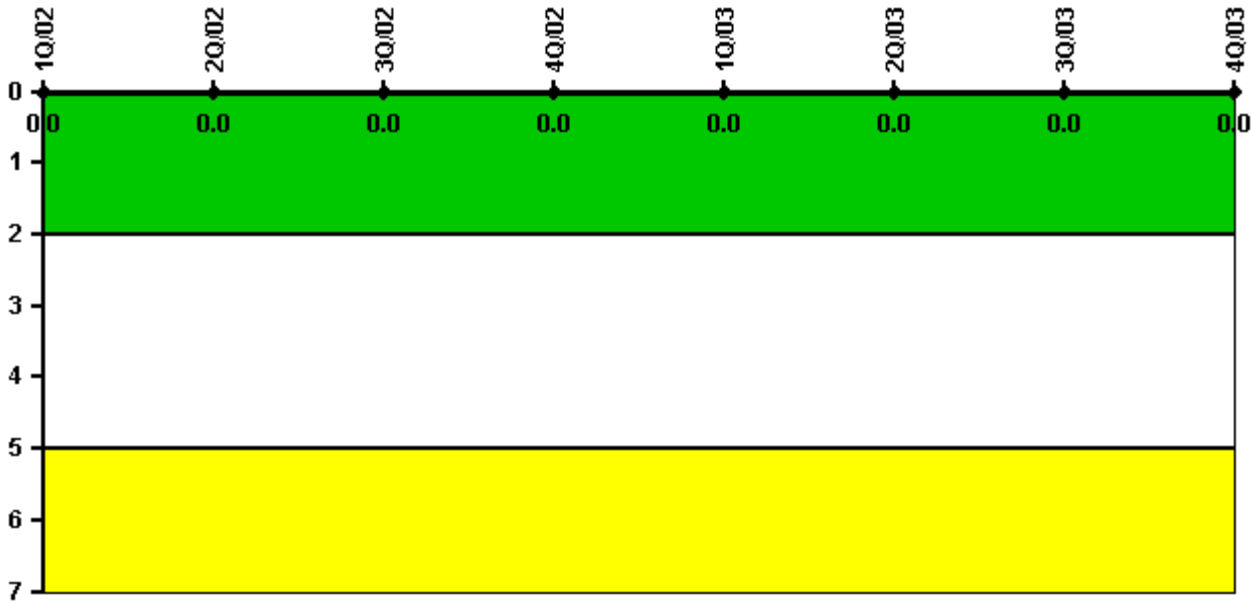
Thresholds: White > 0.080

Notes

Protected Area Security Performance Index	1Q/02	2Q/02	3Q/02	4Q/02	1Q/03	2Q/03	3Q/03	4Q/03
IDS compensatory hours	34.74	206.95	15.55	82.72	141.91	157.00	109.35	59.40
CCTV compensatory hours	72.6	0	2.4	159.2	16.5	5.8	218.7	82.6
IDS normalization factor	1.00	1.00	1.00	1.00	1.00	1.00	1.00	1.00
CCTV normalization factor	1.1	1.1	1.1	1.1	1.1	1.1	1.1	1.1
Index Value	0.056	0.040	0.033	0.032	0.035	0.032	0.049	0.043

Licensee Comments: none

Personnel Screening Program



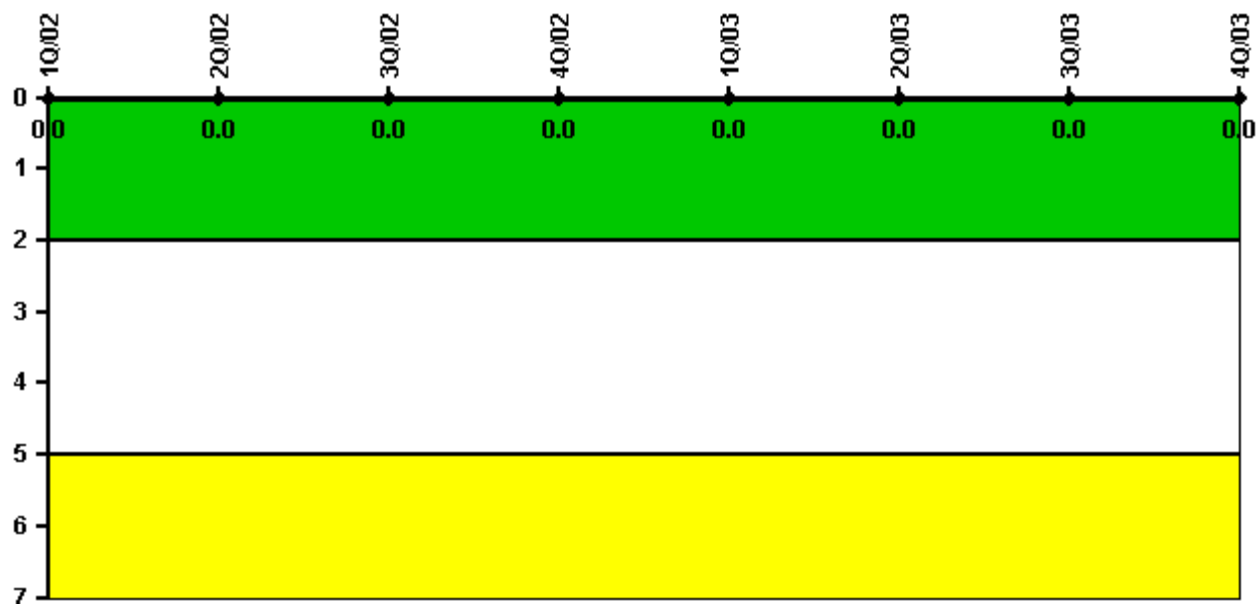
Thresholds: White > 2.0 Yellow > 5.0

Notes

Personnel Screening Program	1Q/02	2Q/02	3Q/02	4Q/02	1Q/03	2Q/03	3Q/03	4Q/03
Program failures	0	0	0	0	0	0	0	0
Indicator value	0	0	0	0	0	0	0	0

Licensee Comments: none

FFD/Personnel Reliability



Thresholds: White > 2.0 Yellow > 5.0

Notes

FFD/Personnel Reliability	1Q/02	2Q/02	3Q/02	4Q/02	1Q/03	2Q/03	3Q/03	4Q/03
Program Failures	0	0	0	0	0	0	0	0
Indicator value	0	0	0	0	0	0	0	0

Licensee Comments: none

▲ [PI Summary](#) | [Inspection Findings Summary](#) | [Reactor Oversight Process](#)

Last Modified: January 23, 2004