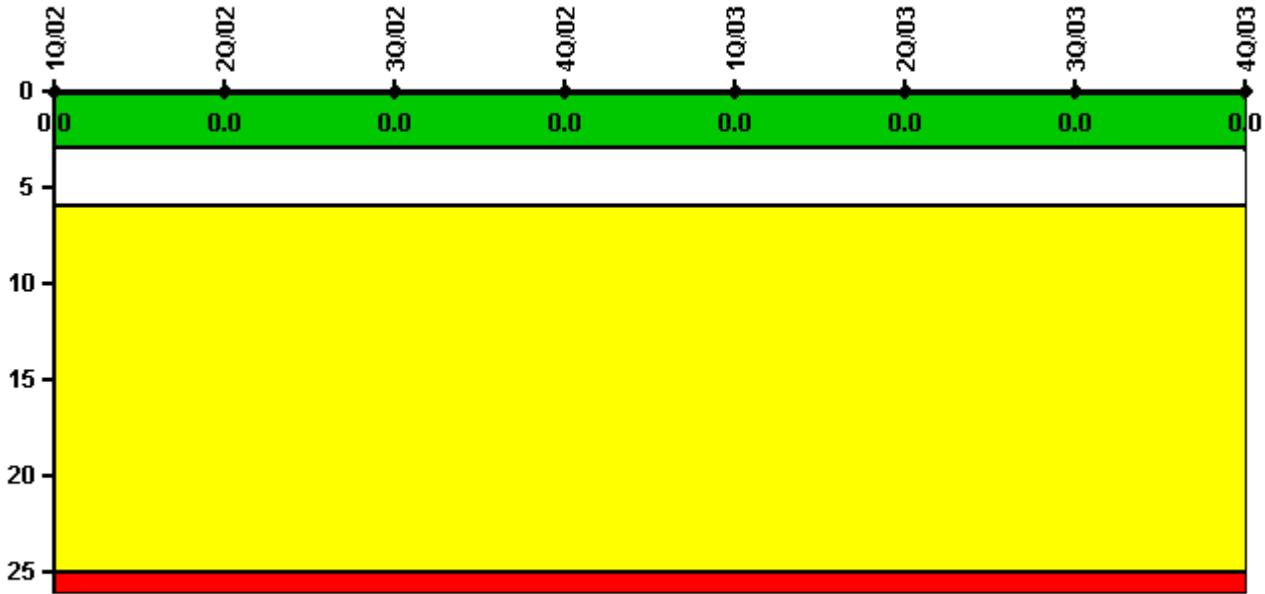


# Hatch 1

## 4Q/2003 Performance Indicators

Licensee's General Comments: none

### Unplanned Scrams per 7000 Critical Hrs



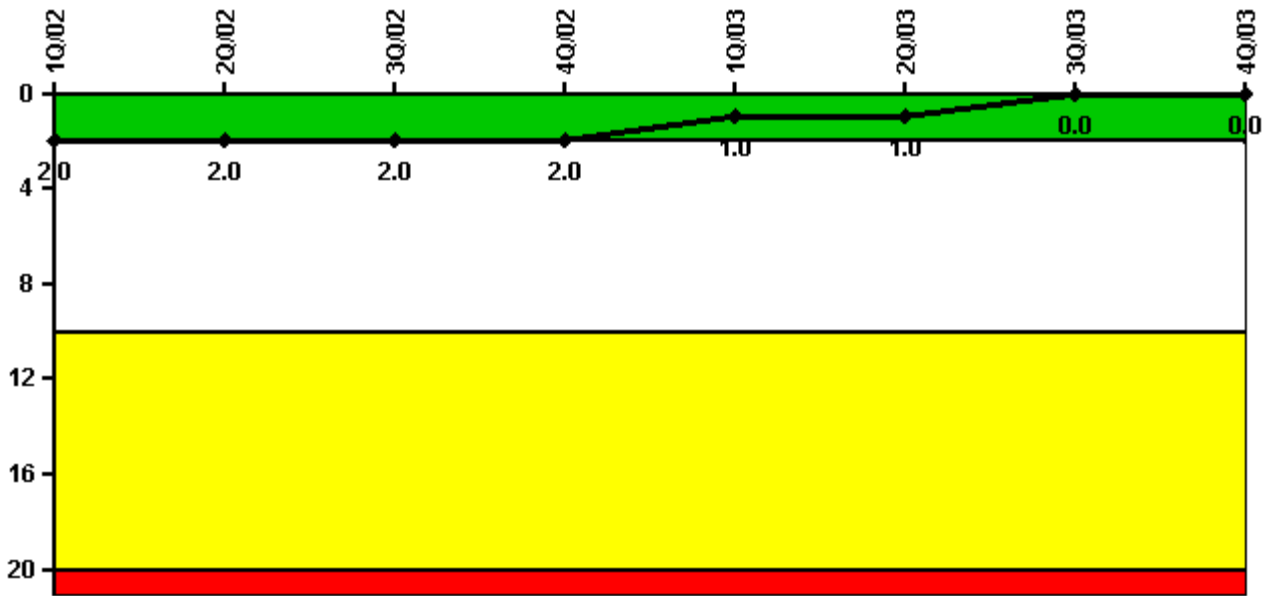
Thresholds: White > 3.0 Yellow > 6.0 Red > 25.0

### Notes

Unplanned Scrams per 7000 Critical Hrs	1Q/02	2Q/02	3Q/02	4Q/02	1Q/03	2Q/03	3Q/03	4Q/03
Unplanned scrams	0	0	0	0	0	0	0	0
Critical hours	1851.4	1718.4	2208.0	2126.1	2160.0	1877.5	2208.0	2209.0
Indicator value	0	0	0	0	0	0	0	0

Licensee Comments: none

### Scrams with Loss of Normal Heat Removal



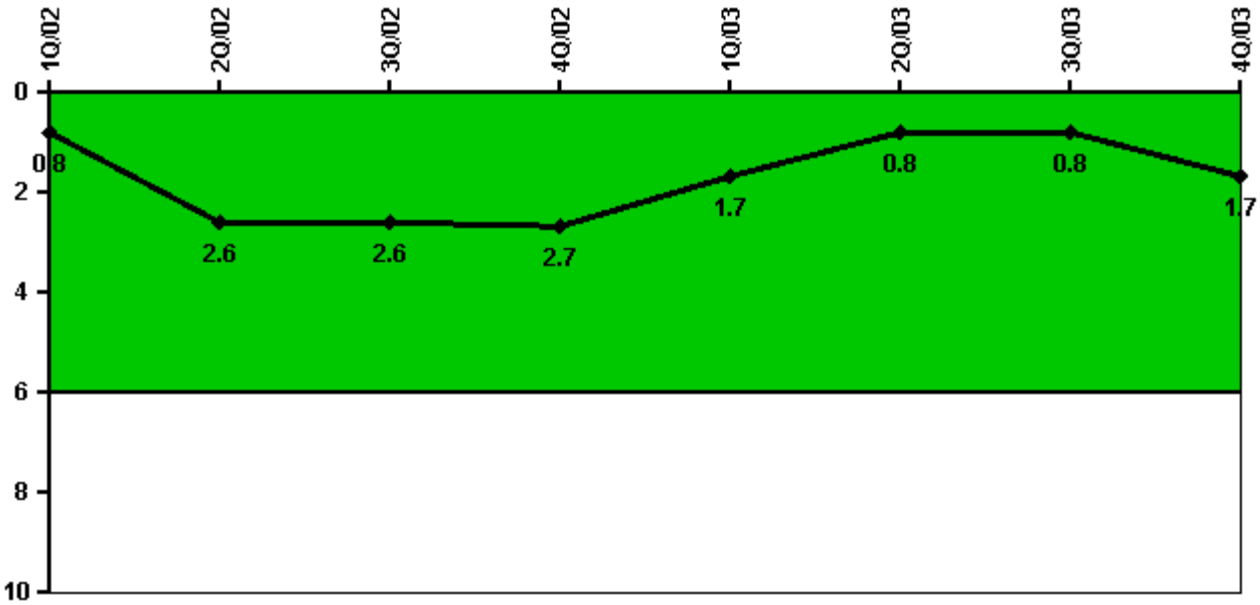
Thresholds: White > 2.0 Yellow > 10.0 Red > 20.0

#### Notes

Scrams with Loss of Normal Heat Removal	1Q/02	2Q/02	3Q/02	4Q/02	1Q/03	2Q/03	3Q/03	4Q/03
Scrams	0	0	0	0	0	0	0	0
Indicator value	2.0	2.0	2.0	2.0	1.0	1.0	0	0

Licensee Comments: none

### Unplanned Power Changes per 7000 Critical Hrs



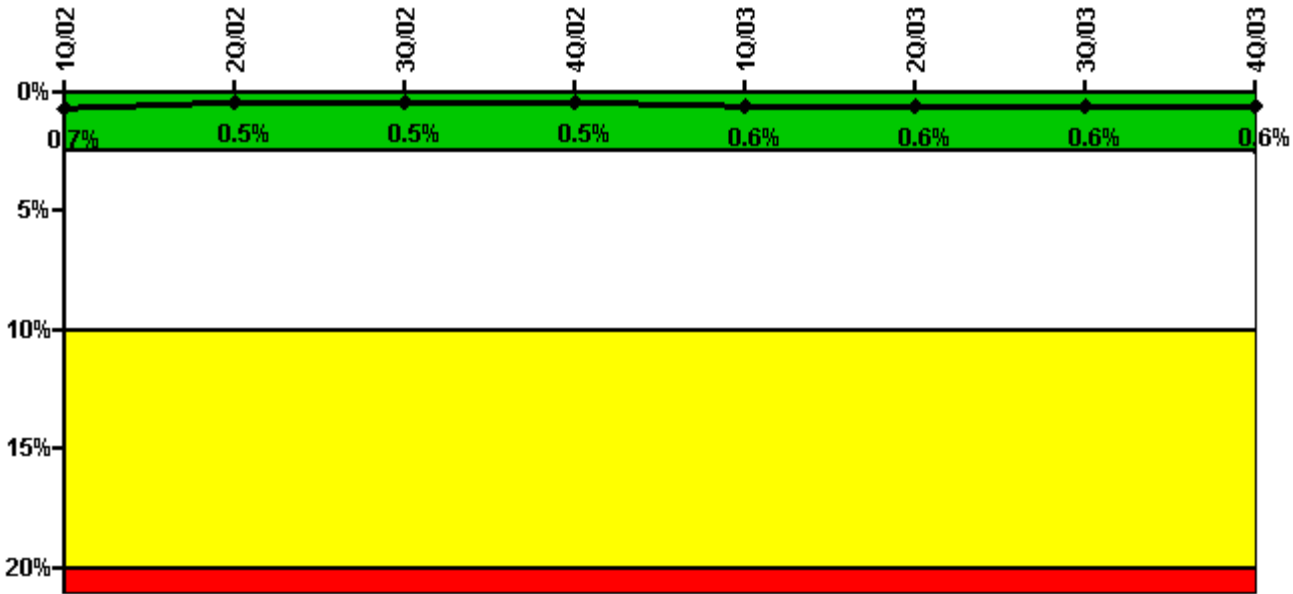
Thresholds: White > 6.0

#### Notes

Unplanned Power Changes per 7000 Critical Hrs	1Q/02	2Q/02	3Q/02	4Q/02	1Q/03	2Q/03	3Q/03	4Q/03
Unplanned power changes	1.0	2.0	0	0	0	1.0	0	1.0
Critical hours	1851.4	1718.4	2208.0	2126.1	2160.0	1877.5	2208.0	2209.0
Indicator value	0.8	2.6	2.6	2.7	1.7	0.8	0.8	1.7

Licensee Comments: none

### Safety System Unavailability, Emergency AC Power, >2EDG



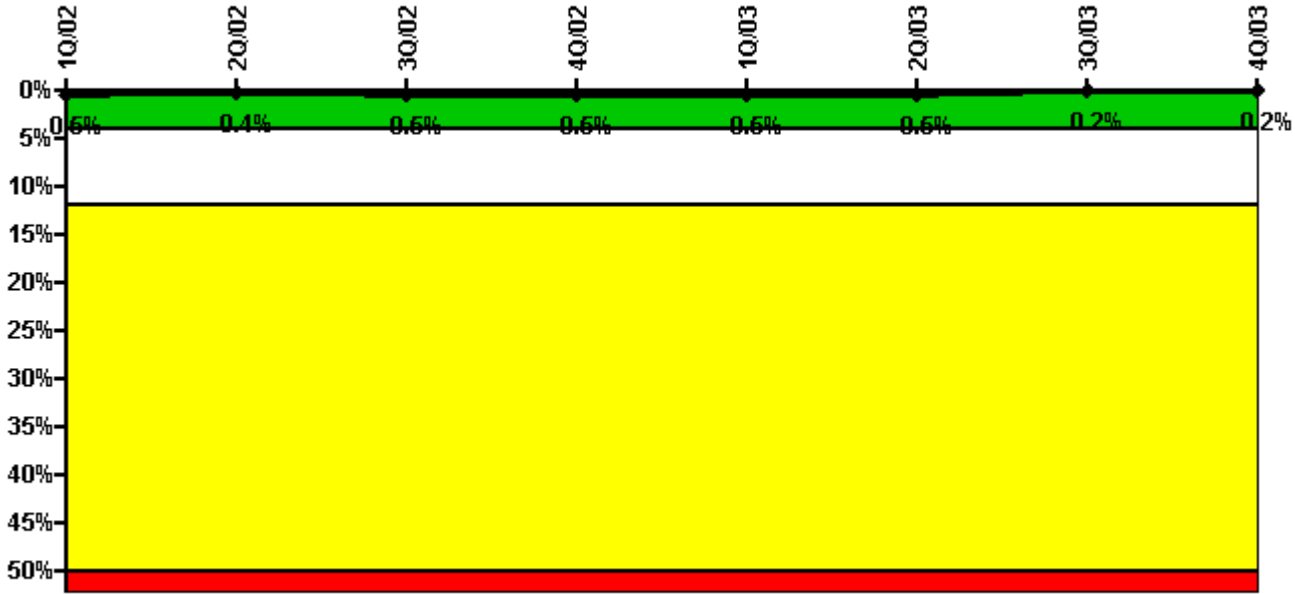
Thresholds: White > 2.5% Yellow > 10.0% Red > 20.0%

#### Notes

Safety System Unavailability, Emergency AC Power, >2EDG	1Q/02	2Q/02	3Q/02	4Q/02	1Q/03	2Q/03	3Q/03	4Q/03
<b>Train 1</b>								
Planned unavailable hours	0.08	0	0	0	0.25	0	0	0
Unplanned unavailable hours	0	0	0	0	44.47	0	0	18.87
Fault exposure hours	0	0	0	0	0	0	0	0
Effective Reset hours	0	0	0	0	0	0	0	0
Required hours	2160.00	2183.00	2208.00	2209.00	2160.00	2183.00	2208.00	2209.00
<b>Train 2</b>								
Planned unavailable hours	0.08	0	0	0	0.43	0	14.50	15.97
Unplanned unavailable hours	0	0	0	0	0	0	0	0
Fault exposure hours	0	0	0	0	0	0	0	0
Effective Reset hours	0	0	0	0	0	0	0	0
Required hours	2160.00	2183.00	2208.00	2209.00	2160.00	2183.00	2208.00	2209.00
<b>Train 3</b>								
Planned unavailable hours	172.83	0	0	0	6.43	39.80	0	0
Unplanned unavailable hours	0	0	0	0	0	0	0	0
Fault exposure hours	0	0	0	0	0	0	0	0
Effective Reset hours	0	0	0	0	0	0	0	0
Required hours	2160.00	2183.00	2208.00	2209.00	2160.00	2183.00	2208.00	2209.00
Indicator value	0.7%	0.5%	0.5%	0.5%	0.6%	0.6%	0.6%	0.6%

Licensee Comments: none

### Safety System Unavailability, High Pressure Injection System (HPCI)



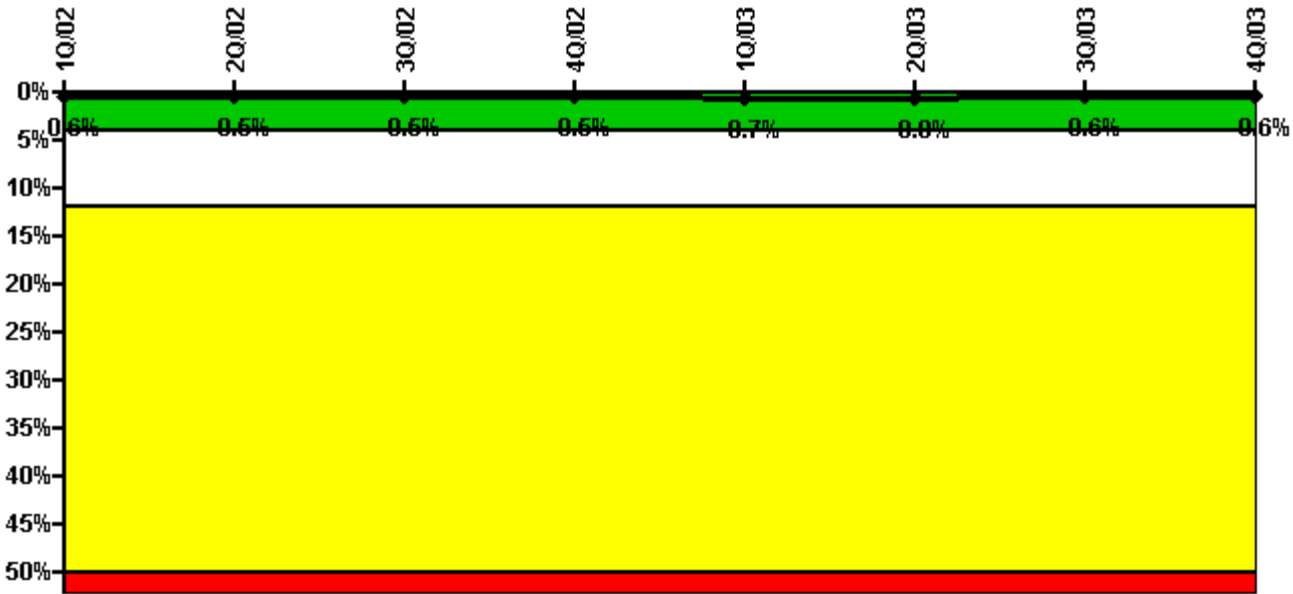
Thresholds: White > 4.0% Yellow > 12.0% Red > 50.0%

#### Notes

Safety System Unavailability, High Pressure Injection System (HPCI)	1Q/02	2Q/02	3Q/02	4Q/02	1Q/03	2Q/03	3Q/03	4Q/03
Train 1								
Planned unavailable hours	0	0	0	5.03	0	0	0	0
Unplanned unavailable hours	0	0	17.08	0	0	0	0	0
Fault exposure hours	0	0	11.58	0	0	0	0	0
Effective Reset hours	0	0	0	0	0	0	0	0
Required hours	1851.40	1718.42	2208.00	2126.12	2160.00	1877.51	2208.00	2209.00
Indicator value	0.5%	0.4%	0.5%	0.5%	0.5%	0.5%	0.2%	0.2%

Licensee Comments: none

### Safety System Unavailability, Heat Removal System (RCIC)



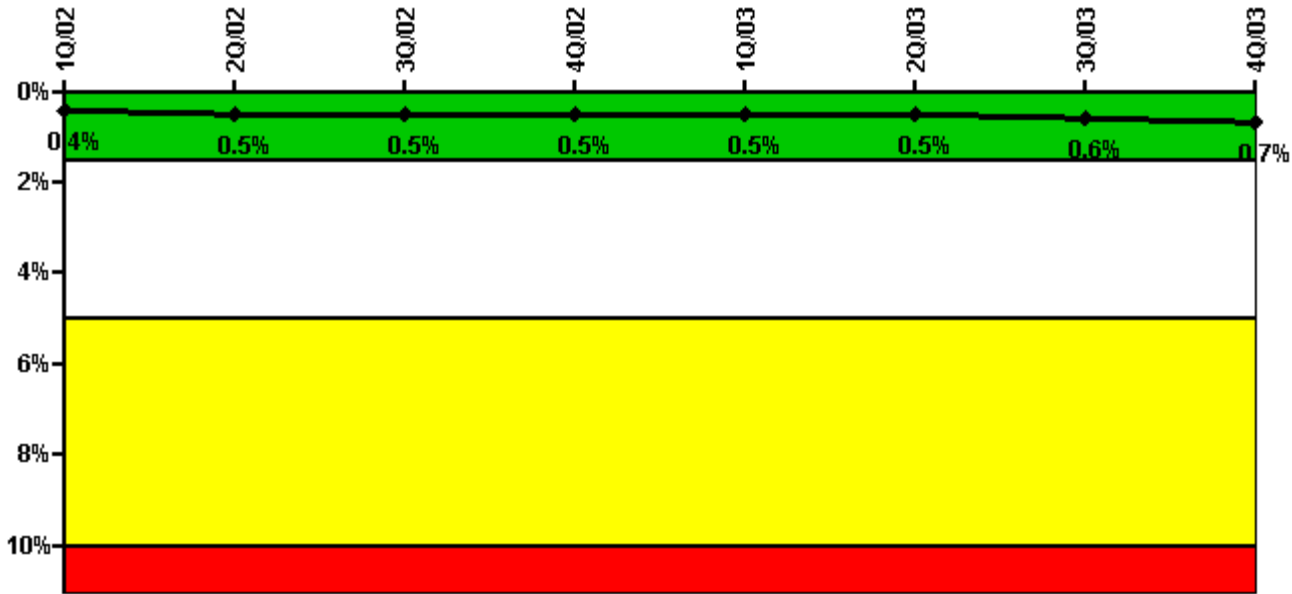
Thresholds: White > 4.0% Yellow > 12.0% Red > 50.0%

#### Notes

Safety System Unavailability, Heat Removal System (RCIC)	1Q/02	2Q/02	3Q/02	4Q/02	1Q/03	2Q/03	3Q/03	4Q/03
Train 1								
Planned unavailable hours	7.67	5.75	0.42	0.55	0.42	0.42	0.83	0.42
Unplanned unavailable hours	0	0	0	0	57.22	0	0	0
Fault exposure hours	0	0	0	0	0	0	0	0
Effective Reset hours	0	0	0	0	0	0	0	0
Required hours	1851.40	1718.42	2208.00	2126.12	2160.00	1877.51	2208.00	2209.00
Indicator value	0.6%	0.5%	0.5%	0.5%	0.7%	0.8%	0.6%	0.6%

Licensee Comments: none

### Safety System Unavailability, Residual Heat Removal System



Thresholds: White > 1.5% Yellow > 5.0% Red > 10.0%

**Notes**

Safety System Unavailability, Residual Heat Removal System	1Q/02	2Q/02	3Q/02	4Q/02	1Q/03	2Q/03	3Q/03	4Q/03
<b>Train 1</b>								
Planned unavailable hours	31.38	0	0	0	0	0	26.31	3.27
Unplanned unavailable hours	0	4.00	21.43	0	0	0	42.60	83.67
Fault exposure hours	0	0	0	0	0	0	0	0
Effective Reset hours	0	0	0	0	0	0	0	0
Required hours	2160.00	2183.00	2208.00	2209.00	2160.00	2183.00	2208.00	2209.00
<b>Train 2</b>								
Planned unavailable hours	18.28	67.93	0	4.97	0	7.55	0	45.42
Unplanned unavailable hours	0	0.83	0	0	0	0	0	0
Fault exposure hours	0	0	0	0	0	0	0	0
Effective Reset hours	0	0	0	0	0	0	0	0
Required hours	2160.00	2183.00	2208.00	2209.00	2160.00	2183.00	2208.00	2209.00
<b>Indicator value</b>	<b>0.4%</b>	<b>0.5%</b>	<b>0.5%</b>	<b>0.5%</b>	<b>0.5%</b>	<b>0.5%</b>	<b>0.6%</b>	<b>0.7%</b>

Licensee Comments:

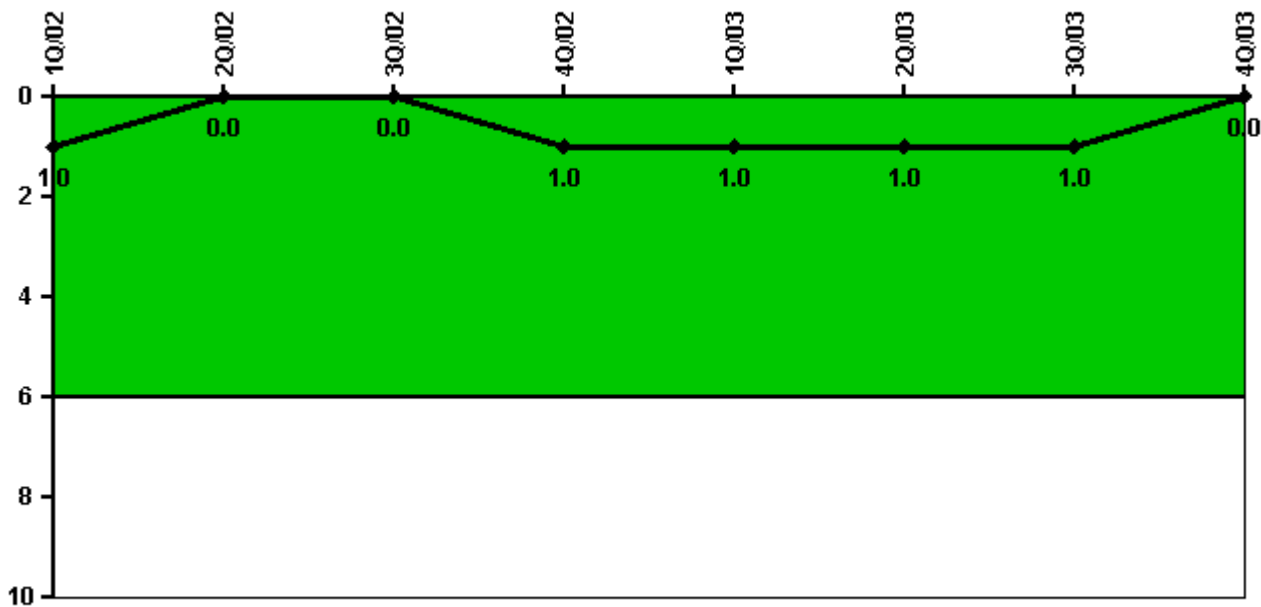
3Q/03: (4Q2003) 42.6 unplanned hours were added to August due to the discovery of the 'C' RHRSW pump being inop since the last RFO (4/23/02) due to corroded anchor bolt nuts. The 'A' RHRSW pump was also unavailable at various times during this period. There was no change in indicator color.

3Q/02: Due to an engineering evaluation which concluded the removal of any one of the RHRSW pump motors would not create an overstressed condition during a seismic event, the following hours have been removed: 01/2000 (train 1) 59.667 planned hours; 04/2000 (train 2) 7.583 planned hours; 12/2001 (train 2) 126.717 unplanned hours; and 6/2002 (train 2) 30.833 planned hours. This did not affect the color of the indicator.

(4Q2003) 21.43 unplanned hours were added to July, due to the discovery of the 'C' RHRSW pump being inop since the last RFO (4/23/02) due to corroded anchor bolt nuts. The 'A' RHRSW pump was also unavailable at various times during this period. There was no change in indicator color.

2Q/02: Due to an engineering evaluation, which concluded the removal of any one of the RHRSW pump motors would not create an overstressed condition during a seismic event, the 30.833 hours included in the 2Q2002 submittal were removed in the Q3/2002 sumittal. There was no affect to the color of the indicator. (4Q3003) 3.167 unplanned hours were added to May due to the discovery of the 'C' RHRSW pump being inop since the last RFO (4/23/02) due to corroded anchor bolt nuts. The 'A' RHRSW pump was also unavailable at various times during this period. There was no change in indicator color.

### Safety System Functional Failures (BWR)



Thresholds: White > 6.0

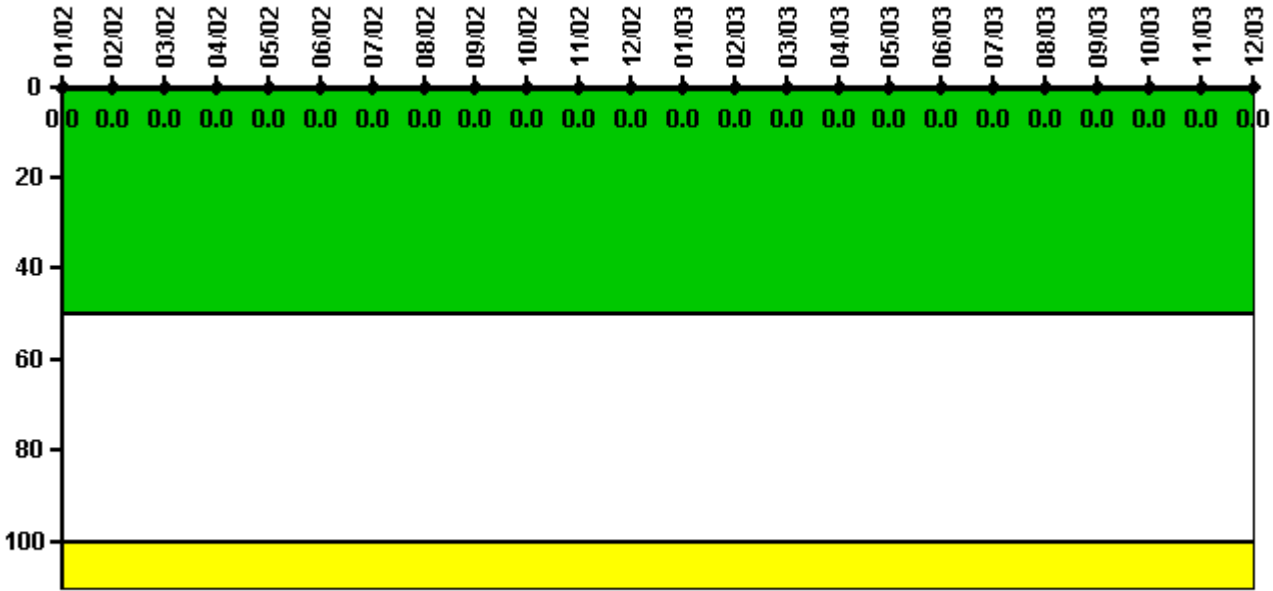
#### Notes

Safety System Functional Failures (BWR)	1Q/02	2Q/02	3Q/02	4Q/02	1Q/03	2Q/03	3Q/03	4Q/03
Safety System Functional Failures	0	0	0	1	0	0	0	0
Indicator value	1	0	0	1	1	1	1	0

Licensee Comments: none



### Reactor Coolant System Activity



Thresholds: White > 50.0 Yellow > 100.0

#### Notes

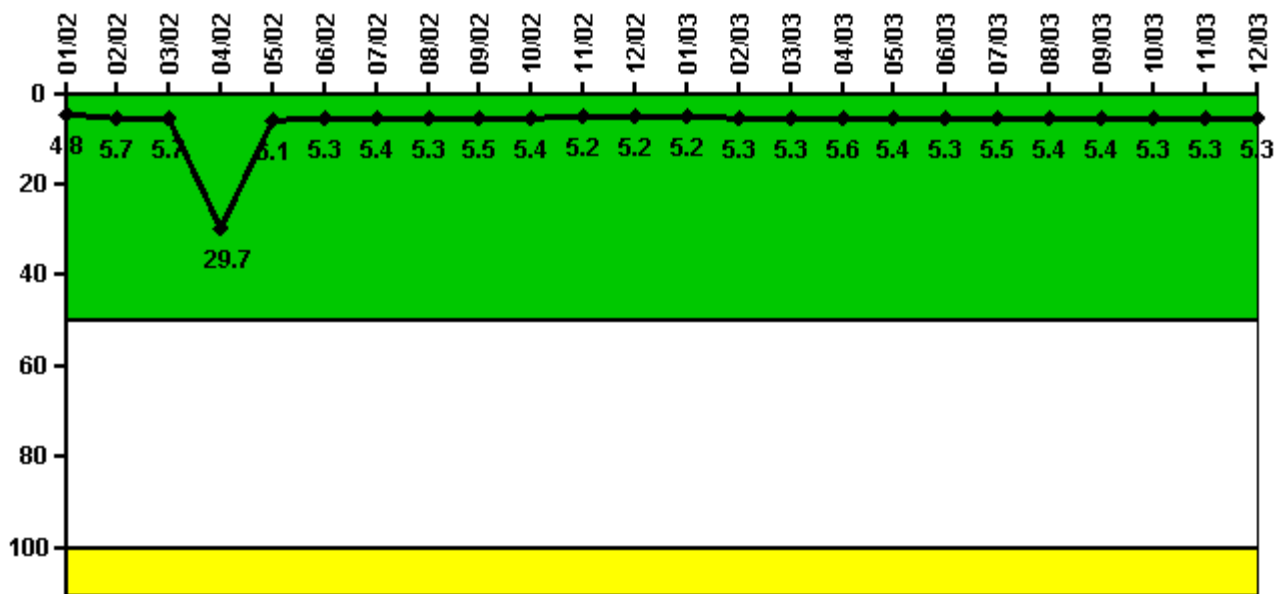
Reactor Coolant System Activity	1/02	2/02	3/02	4/02	5/02	6/02	7/02	8/02	9/02	10/02	11/02	12/02
Maximum activity	0.000040	0.000040	0.000010	0.000004	0.000003	0.000060	0.000004	0.000005	0.000006	0.000004	0.000004	0.000006
Technical specification limit	0.2	0.2	0.2	0.2	0.2	0.2	0.2	0.2	0.2	0.2	0.2	0.2
Indicator value	0	0	0	0	0	0	0	0	0	0	0	0

Reactor Coolant System Activity	1/03	2/03	3/03	4/03	5/03	6/03	7/03	8/03	9/03	10/03	11/03	12/03
Maximum activity	0.000006	0.000005	0.000007	0.000007	0.000009	0.000004	0.000008	0.000006	0.000010	0.000020	0.000020	0.000010
Technical specification limit	0.2	0.2	0.2	0.2	0.2	0.2	0.2	0.2	0.2	0.2	0.2	0.2
Indicator value	0	0	0	0	0	0	0	0	0	0	0	0

Licensee Comments: none

### Reactor Coolant System Leakage



Thresholds: White > 50.0 Yellow > 100.0

Notes

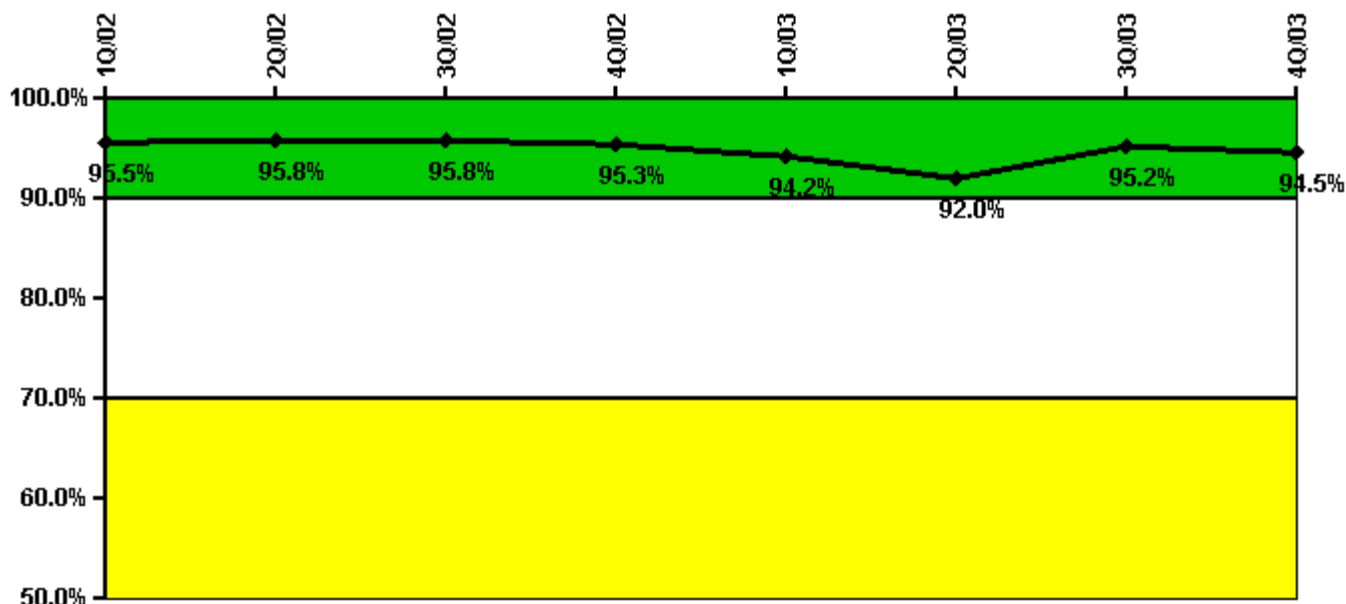
Reactor Coolant System Leakage	1/02	2/02	3/02	4/02	5/02	6/02	7/02	8/02	9/02	10/02	11/02	12/02
Maximum leakage	1.440	1.720	1.720	8.910	1.820	1.580	1.620	1.590	1.640	1.610	1.560	1.560
Technical specification limit	30.0	30.0	30.0	30.0	30.0	30.0	30.0	30.0	30.0	30.0	30.0	30.0
Indicator value	4.8	5.7	5.7	29.7	6.1	5.3	5.4	5.3	5.5	5.4	5.2	5.2

Reactor Coolant System Leakage	1/03	2/03	3/03	4/03	5/03	6/03	7/03	8/03	9/03	10/03	11/03	12/03
Maximum leakage	1.570	1.580	1.580	1.680	1.610	1.600	1.640	1.630	1.630	1.590	1.590	1.590
Technical specification limit	30.0	30.0	30.0	30.0	30.0	30.0	30.0	30.0	30.0	30.0	30.0	30.0
Indicator value	5.2	5.3	5.3	5.6	5.4	5.3	5.5	5.4	5.4	5.3	5.3	5.3

Licensee Comments: none

### Drill/Exercise Performance



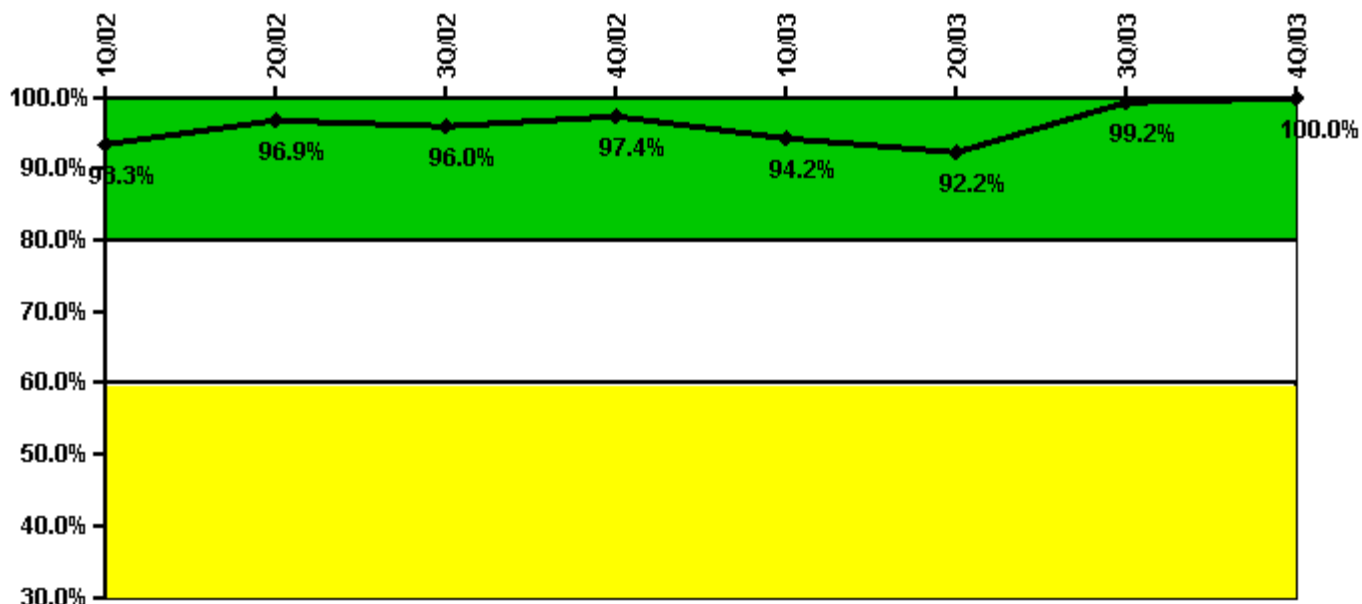
Thresholds: White < 90.0% Yellow < 70.0%

#### Notes

Drill/Exercise Performance	1Q/02	2Q/02	3Q/02	4Q/02	1Q/03	2Q/03	3Q/03	4Q/03
Successful opportunities	0	8.0	54.0	5.0	6.0	6.0	71.0	5.0
Total opportunities	0	8.0	56.0	6.0	8.0	8.0	72.0	6.0
Indicator value	95.5%	95.8%	95.8%	95.3%	94.2%	92.0%	95.2%	94.5%

Licensee Comments: none

### ERO Drill Participation



Thresholds: White < 80.0% Yellow < 60.0%

#### Notes

ERO Drill Participation	1Q/02	2Q/02	3Q/02	4Q/02	1Q/03	2Q/03	3Q/03	4Q/03
Participating Key personnel	126.0	123.0	119.0	114.0	113.0	107.0	130.0	128.0
Total Key personnel	135.0	127.0	124.0	117.0	120.0	116.0	131.0	128.0
Indicator value	93.3%	96.9%	96.0%	97.4%	94.2%	92.2%	99.2%	100.0%

Licensee Comments: none

### Alert & Notification System

**Not applicable due to  
unique design  
characteristics.  
Performance in this area  
will be assessed through  
focused NRC inspection  
efforts.**

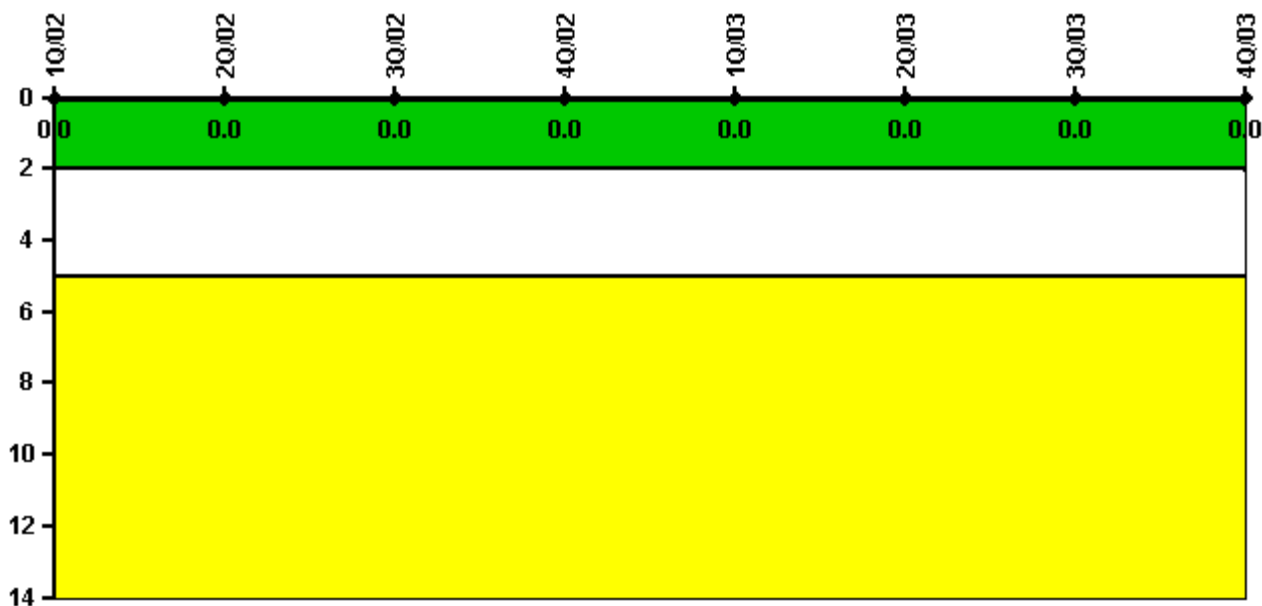
**Notes**

Alert & Notification System	1Q/02	2Q/02	3Q/02	4Q/02	1Q/03	2Q/03	3Q/03	4Q/03
Successful siren-tests								
Total sirens-tests								
Indicator value								

Licensee Comments:

4Q/03: Plant Hatch does not use sirens as an emergency notification system.

### Occupational Exposure Control Effectiveness



Thresholds: White > 2.0 Yellow > 5.0

#### Notes

Occupational Exposure Control Effectiveness	1Q/02	2Q/02	3Q/02	4Q/02	1Q/03	2Q/03	3Q/03	4Q/03
High radiation area occurrences	0	0	0	0	0	0	0	0
Very high radiation area occurrences	0	0	0	0	0	0	0	0
Unintended exposure occurrences	0	0	0	0	0	0	0	0
Indicator value	0	0	0	0	0	0	0	0

Licensee Comments: none

### RETS/ODCM Radiological Effluent



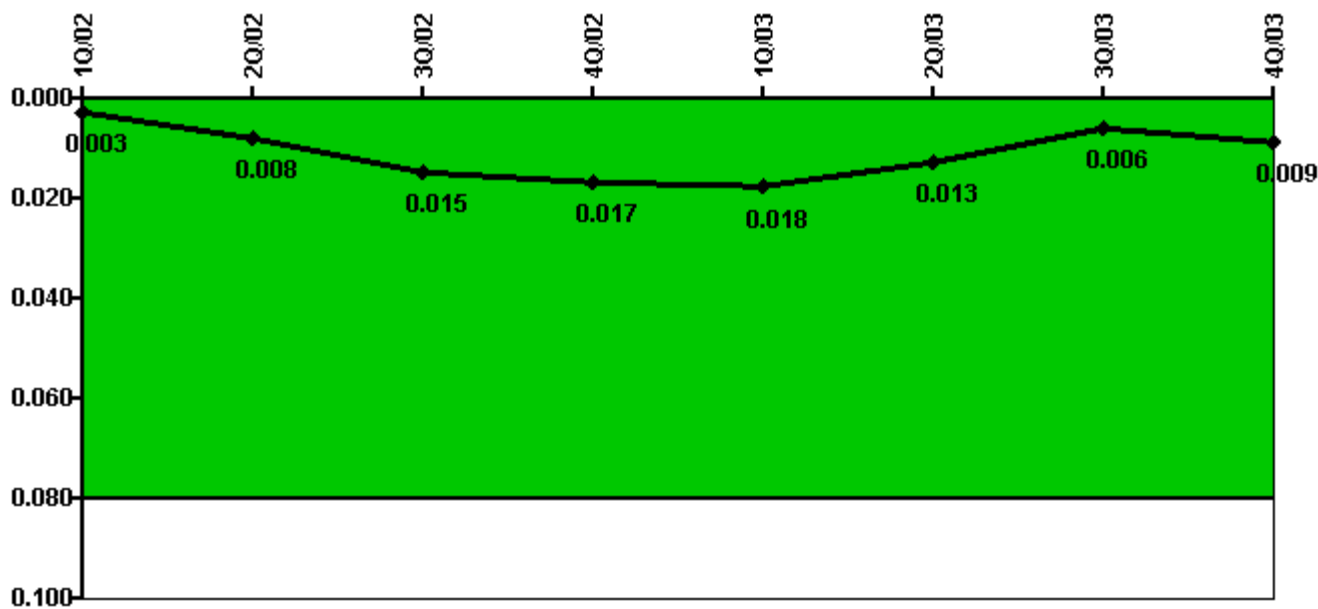
Thresholds: White > 1.0 Yellow > 3.0

#### Notes

RETS/ODCM Radiological Effluent	1Q/02	2Q/02	3Q/02	4Q/02	1Q/03	2Q/03	3Q/03	4Q/03
RETS/ODCM occurrences	0	0	0	0	0	0	0	0
Indicator value	0	0	0	0	0	0	0	0

Licensee Comments: none

### Protected Area Security Performance Index



Thresholds: White > 0.080

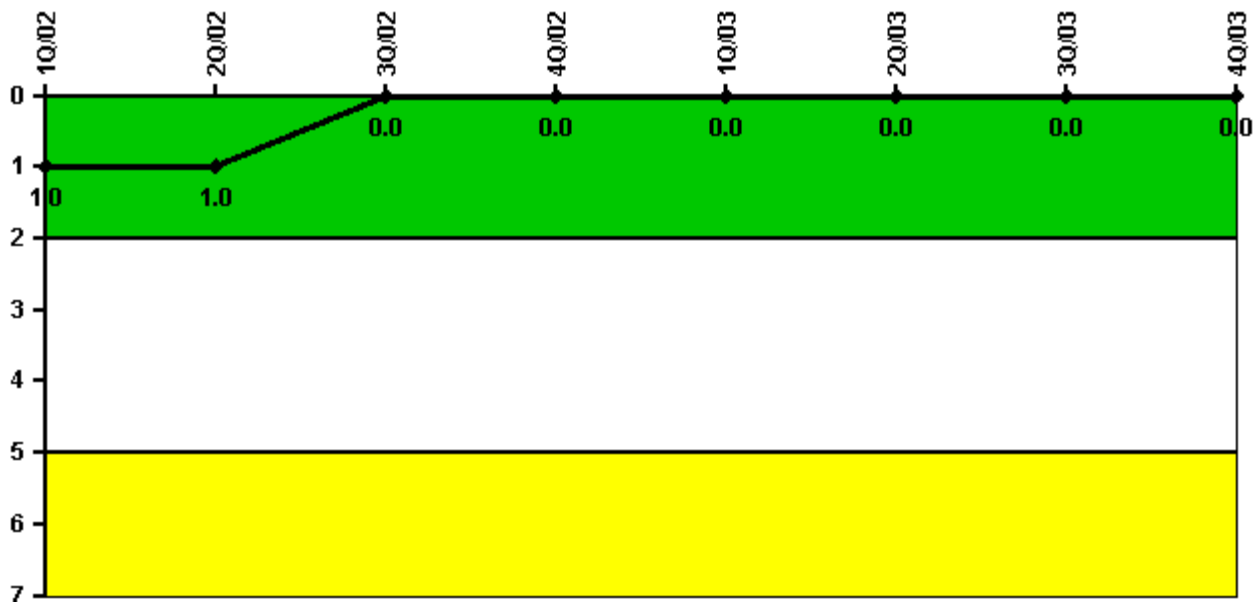
#### Notes

Protected Area Security Performance Index	1Q/02	2Q/02	3Q/02	4Q/02	1Q/03	2Q/03	3Q/03	4Q/03
IDS compensatory hours	20.75	14.06	142.38	48.00	43.37	11.04	0.95	111.33
CCTV compensatory hours	0	87.5	2.4	0	0.7	2.2	0	0
IDS normalization factor	1.10	1.10	1.10	1.10	1.10	1.10	1.10	1.10
CCTV normalization factor	1.0	1.0	1.0	1.0	1.0	1.0	1.0	1.0
Index Value	0.003	0.008	0.015	0.017	0.018	0.013	0.006	0.009

Licensee Comments: none



### Personnel Screening Program



Thresholds: White > 2.0 Yellow > 5.0

#### Notes

Personnel Screening Program	1Q/02	2Q/02	3Q/02	4Q/02	1Q/03	2Q/03	3Q/03	4Q/03
Program failures	0	0	0	0	0	0	0	0
Indicator value	1	1	0	0	0	0	0	0

Licensee Comments: none

### FFD/Personnel Reliability



Thresholds: White > 2.0 Yellow > 5.0

#### Notes

FFD/Personnel Reliability	1Q/02	2Q/02	3Q/02	4Q/02	1Q/03	2Q/03	3Q/03	4Q/03
Program Failures	0	0	0	0	0	0	0	0
Indicator value	0	0	0	0	0	0	0	0

Licensee Comments: none

▲ [PI Summary](#) | [Inspection Findings Summary](#) | [Reactor Oversight Process](#)

Last Modified: January 23, 2004