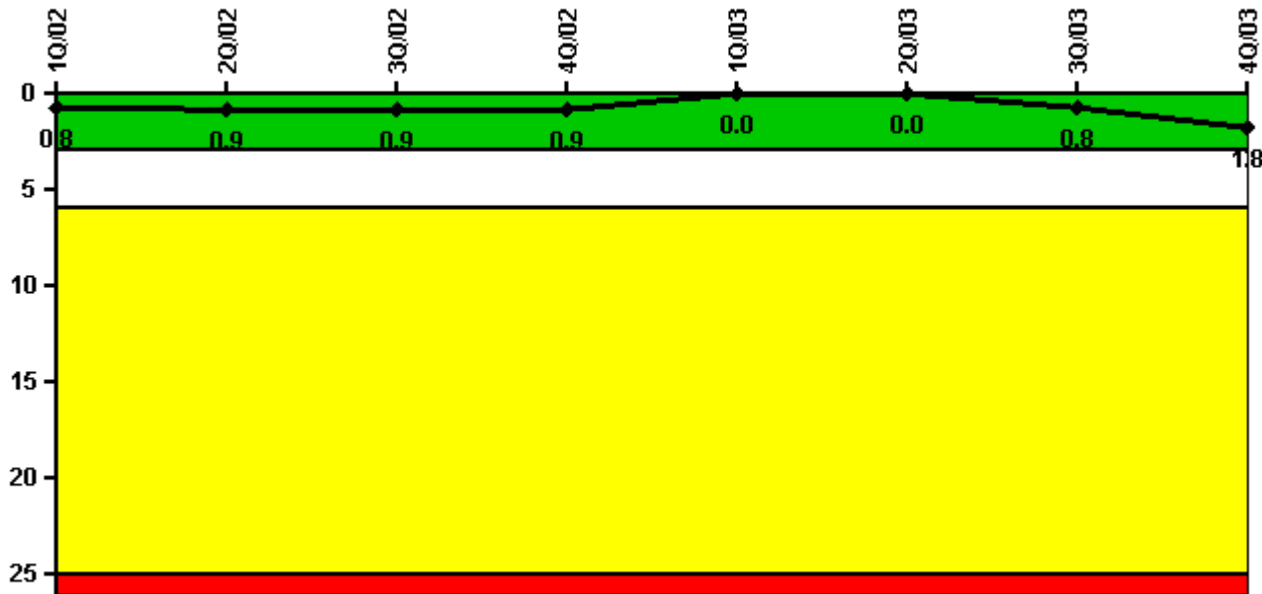


Ginna

4Q/2003 Performance Indicators

Licensee's General Comments: none

Unplanned Scrams per 7000 Critical Hrs



Thresholds: White > 3.0 Yellow > 6.0 Red > 25.0

Notes

Unplanned Scrams per 7000 Critical Hrs	1Q/02	2Q/02	3Q/02	4Q/02	1Q/03	2Q/03	3Q/03	4Q/03
Unplanned scrams	1.0	0	0	0	0	0	1.0	1.0
Critical hours	1810.8	1766.9	2208.0	2209.0	2160.0	2183.0	1761.8	1876.5
Indicator value	0.8	0.9	0.9	0.9	0	0	0.8	1.8

Licensee Comments: none

Scrams with Loss of Normal Heat Removal



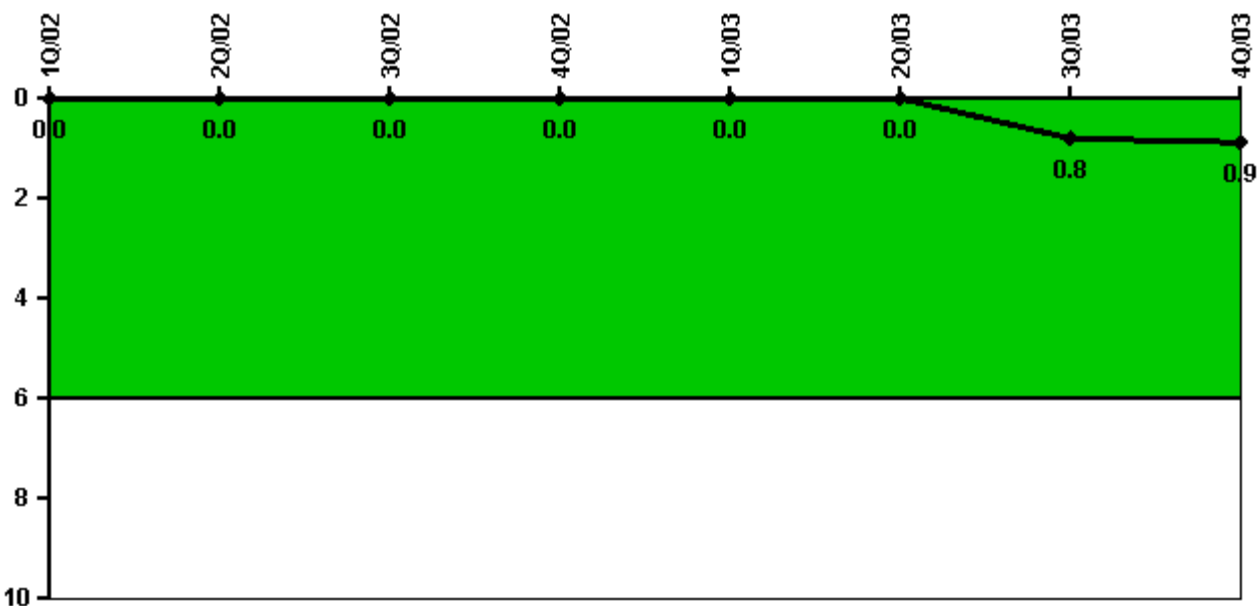
Thresholds: White > 2.0 Yellow > 10.0 Red > 20.0

Notes

Scrams with Loss of Normal Heat Removal	1Q/02	2Q/02	3Q/02	4Q/02	1Q/03	2Q/03	3Q/03	4Q/03
Scrams	1.0	0	0	0	0	0	0	0
Indicator value	1.0	1.0	1.0	1.0	1.0	1.0	1.0	1.0

Licensee Comments: none

Unplanned Power Changes per 7000 Critical Hrs



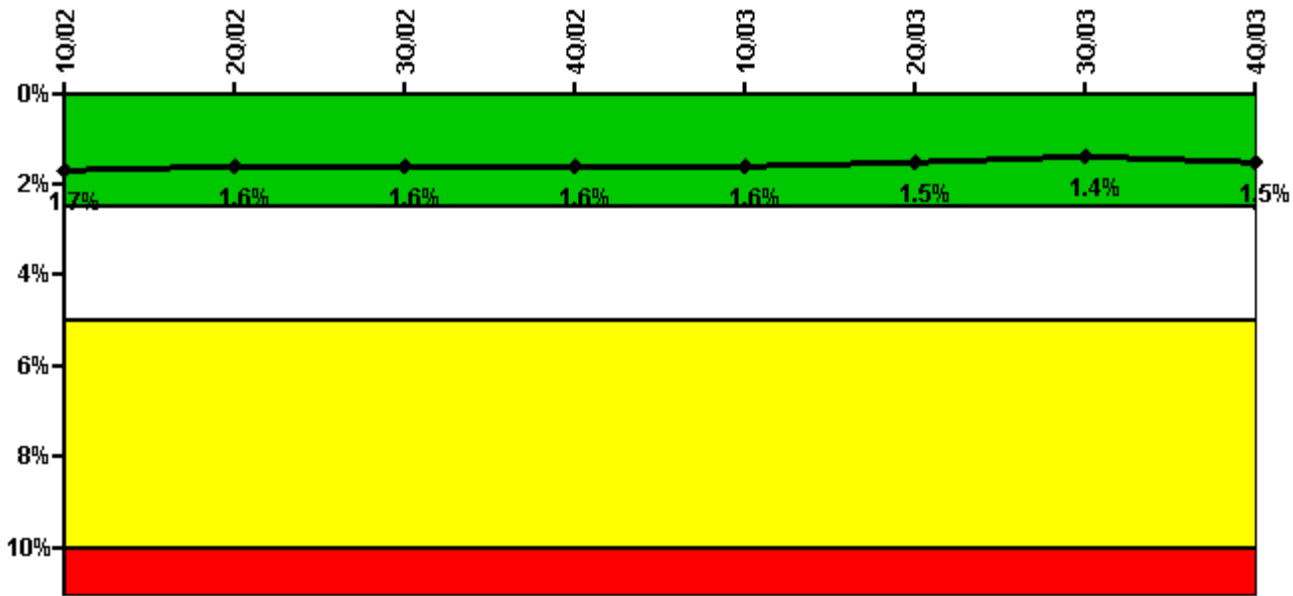
Thresholds: White > 6.0

Notes

Unplanned Power Changes per 7000 Critical Hrs	1Q/02	2Q/02	3Q/02	4Q/02	1Q/03	2Q/03	3Q/03	4Q/03
Unplanned power changes	0	0	0	0	0	0	1.0	0
Critical hours	1810.8	1766.9	2208.0	2209.0	2160.0	2183.0	1761.8	1876.5
Indicator value	0	0	0	0	0	0	0.8	0.9

Licensee Comments: none

Safety System Unavailability, Emergency AC Power



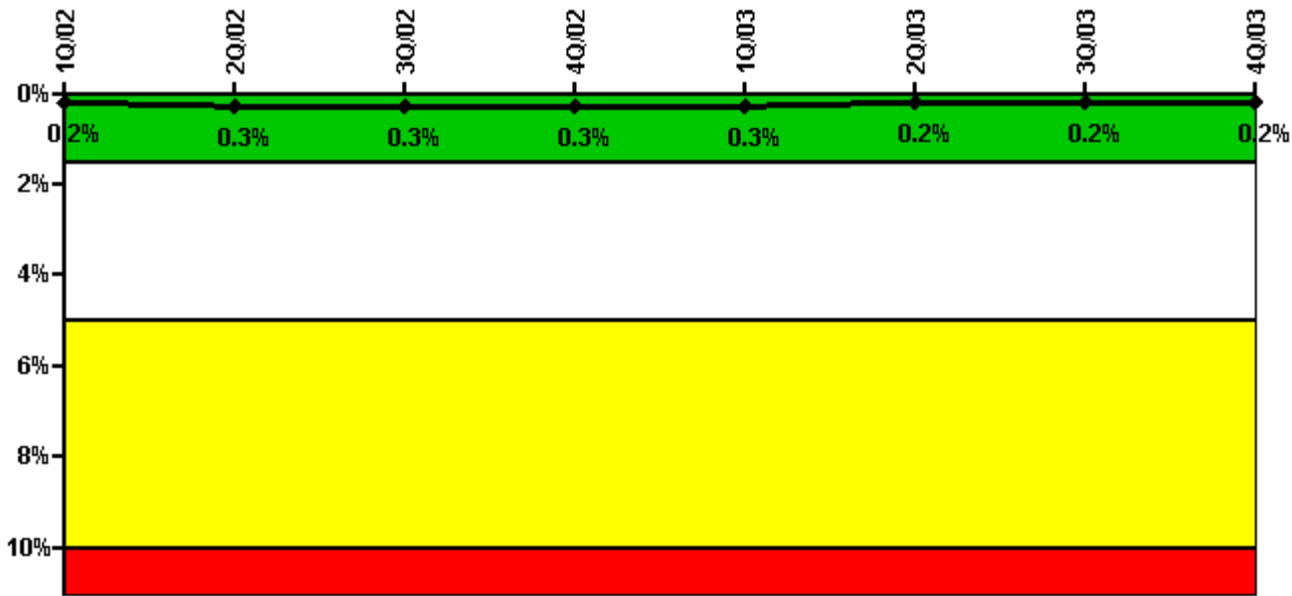
Thresholds: White > 2.5% Yellow > 5.0% Red > 10.0%

Notes

Safety System Unavailability, Emergency AC Power	1Q/02	2Q/02	3Q/02	4Q/02	1Q/03	2Q/03	3Q/03	4Q/03
Train 1								
Planned unavailable hours	7.10	12.60	23.60	6.30	16.10	18.60	6.40	49.50
Unplanned unavailable hours	0	0	0	0	0	0	0	0
Fault exposure hours	0	0	0	0	0	0	0	0
Effective Reset hours	0	0	0	0	0	0	0	0
Required hours	2160.00	2183.00	2208.00	2209.00	2160.00	2183.00	2208.00	2209.00
Train 2								
Planned unavailable hours	15.30	7.90	4.30	17.60	12.60	16.10	11.70	24.80
Unplanned unavailable hours	0	0	8.90	0	0	0	8.20	0
Fault exposure hours	0	0	0	0	0	0	0	0
Effective Reset hours	0	0	0	0	0	0	0	0
Required hours	2160.00	2183.00	2208.00	2209.00	2160.00	2183.00	2208.00	2209.00
Indicator value	1.7%	1.6%	1.6%	1.6%	1.6%	1.5%	1.4%	1.5%

Licensee Comments: none

Safety System Unavailability, High Pressure Injection System (HPSI)



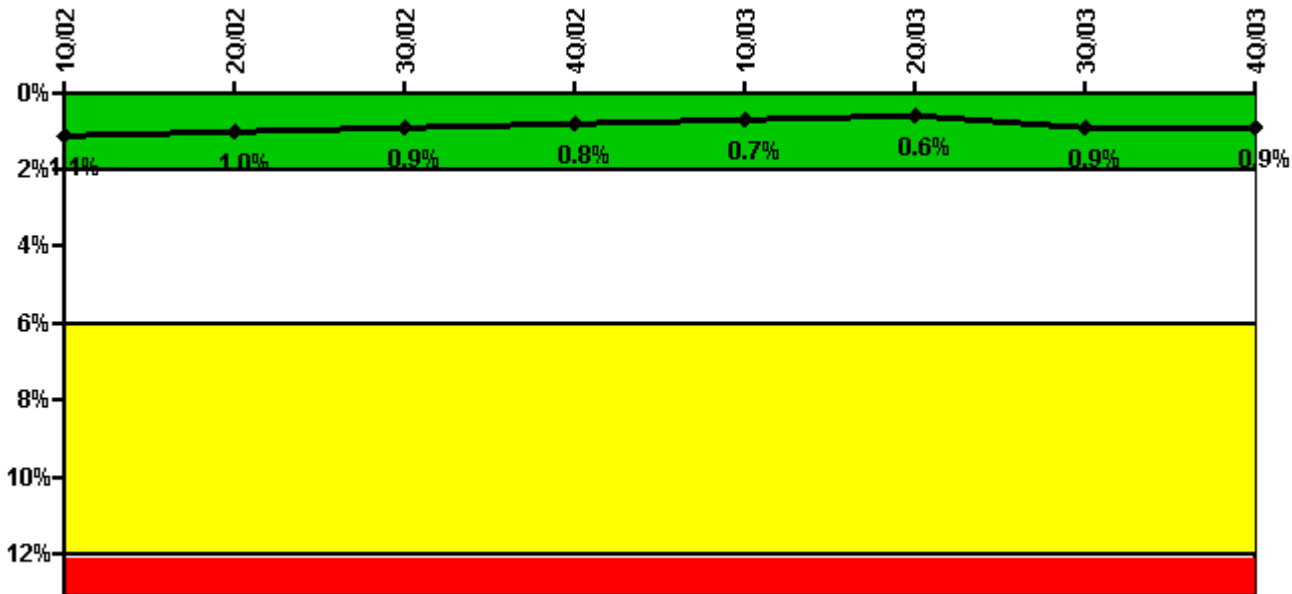
Thresholds: White > 1.5% Yellow > 5.0% Red > 10.0%

Notes

Safety System Unavailability, High Pressure Injection System (HPSI)	1Q/02	2Q/02	3Q/02	4Q/02	1Q/03	2Q/03	3Q/03	4Q/03
Train 1								
Planned unavailable hours	1.90	2.40	0	5.00	6.30	3.43	0	5.91
Unplanned unavailable hours	0	0	0	0	0	0	0	0
Fault exposure hours	0	0	0	0	0	0	0	0
Effective Reset hours	0	0	0	0	0	0	0	0
Required hours	1872.50	1803.20	2208.00	2209.00	2160.00	2183.00	1872.00	1968.00
Train 2								
Planned unavailable hours	6.40	8.03	0	0	0	6.83	6.83	1.28
Unplanned unavailable hours	0	0	0	0	0	0	0	0
Fault exposure hours	0	0	0	0	0	0	0	0
Effective Reset hours	0	0	0	0	0	0	0	0
Required hours	1872.50	1803.20	2208.00	2209.00	2160.00	2183.00	1872.00	1968.00
Train 3								
Planned unavailable hours	5.70	18.50	0	0	11.30	2.33	0.22	4.75
Unplanned unavailable hours	0	0	0	0	0	0	0	0
Fault exposure hours	0	0	0	0	0	0	0	0
Effective Reset hours	0	0	0	0	0	0	0	0
Required hours	1872.50	1803.20	2208.00	2209.00	2160.00	2183.00	1872.00	1968.00
Indicator value	0.2%	0.3%	0.3%	0.3%	0.3%	0.2%	0.2%	0.2%

Licensee Comments: none

Safety System Unavailability, Heat Removal System (AFW)



Thresholds: White > 2.0% Yellow > 6.0% Red > 12.0%

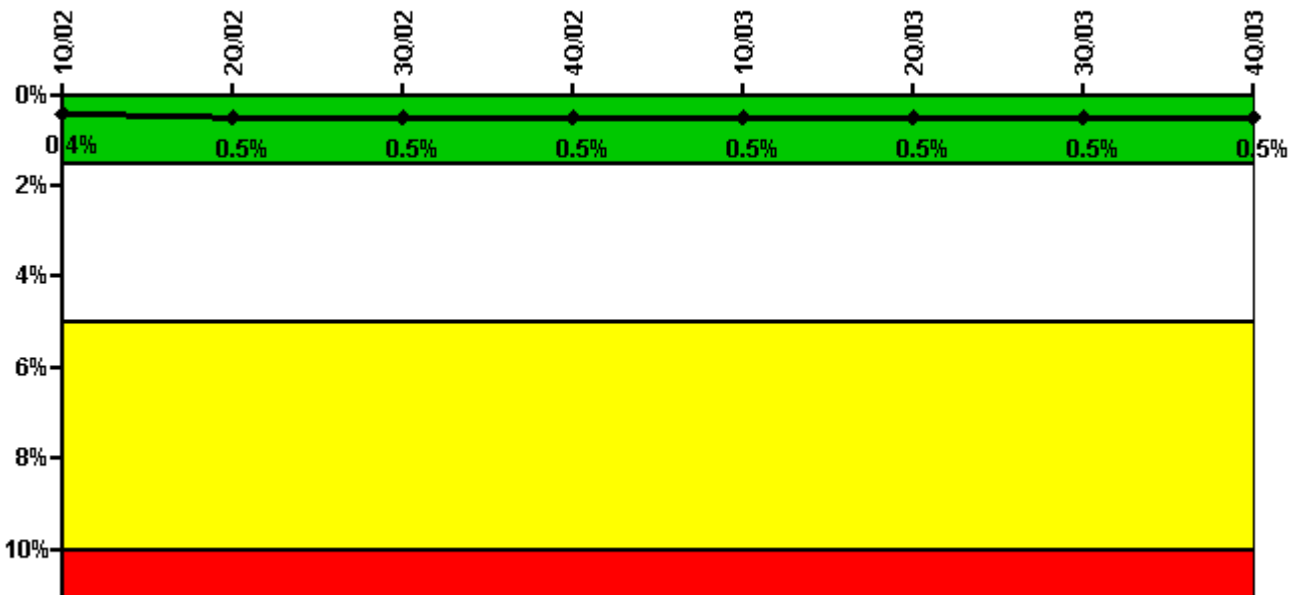
Notes

Safety System Unavailability, Heat Removal System (AFW)	1Q/02	2Q/02	3Q/02	4Q/02	1Q/03	2Q/03	3Q/03	4Q/03
Train 1								
Planned unavailable hours	16.08	2.80	2.73	33.80	0	0	2.42	0
Unplanned unavailable hours	0	0	0	0	0	0	81.69	0
Fault exposure hours	0	0	0	0	0	0	0	0
Effective Reset hours	0	0	0	0	0	0	0	0
Required hours	1836.68	1803.20	2208.00	2209.00	2160.00	2183.00	1837.12	1907.67
Train 2								
Planned unavailable hours	53.93	2.64	4.00	37.55	7.80	0	17.69	0
Unplanned unavailable hours	0	0	0	0	0	0	102.31	0
Fault exposure hours	0	0	0	0	0	0	0	0
Effective Reset hours	0	0	0	0	0	0	0	0
Required hours	1836.68	1803.20	2208.00	2209.00	2160.00	2183.00	1837.12	1907.67
Train 3								
Planned unavailable hours	24.70	6.76	2.85	13.50	8.97	8.45	11.05	7.27
Unplanned unavailable hours	0	0	0	0	0	0	0	0
Fault exposure hours	0	0	0	0	0	0	0	59.78
Effective Reset hours	0	0	0	0	0	0	0	0
Required hours	1836.68	1803.20	2208.00	2209.00	2160.00	2183.00	1837.12	1907.67
Train 4								

Planned unavailable hours	176.92	0	4.32	6.82	0	10.69	31.00	2.49
Unplanned unavailable hours	0	0	0	0	0	0	0	0
Fault exposure hours	0	0	0	0	0	0	0	0
Effective Reset hours	0	0	0	0	0	0	0	0
Required hours	1836.68	1803.20	2208.00	2209.00	2160.00	2183.00	1837.12	1907.67
Train 5								
Planned unavailable hours	0	28.40	5.02	0	8.00	29.67	78.25	0
Unplanned unavailable hours	0	0	0	0	100.50	0	0	0
Fault exposure hours	0	0	0	0	0	0	0	0
Effective Reset hours	0	0	0	0	0	0	0	0
Required hours	1836.68	1803.20	2208.00	2209.00	2160.00	2183.00	1837.12	1907.67
Indicator value	1.1%	1.0%	0.9%	0.8%	0.7%	0.6%	0.9%	0.9%

Licensee Comments: none

Safety System Unavailability, Residual Heat Removal System



Thresholds: White > 1.5% Yellow > 5.0% Red > 10.0%

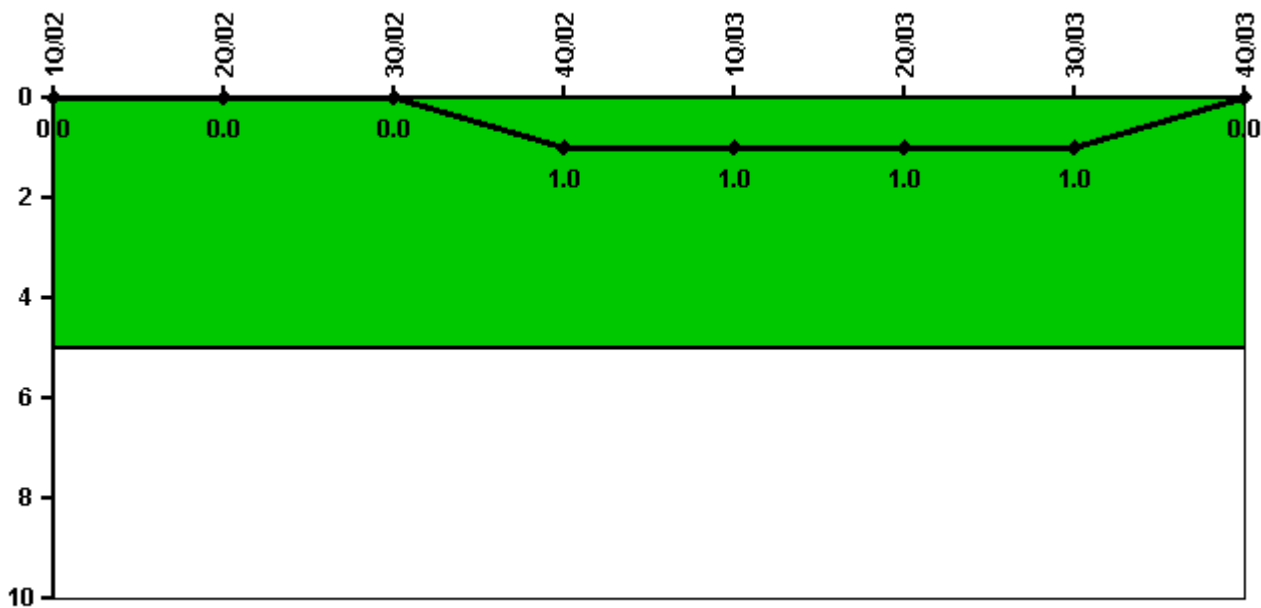
Notes

Safety System Unavailability, Residual Heat Removal System	1Q/02	2Q/02	3Q/02	4Q/02	1Q/03	2Q/03	3Q/03	4Q/03
Train 1								
Planned unavailable hours	5.60	32.50	7.90	15.50	0	16.35	0.83	8.62
Unplanned unavailable hours	0	0	0	0	0	0	0	0

Fault exposure hours	0	0	0	0	0	0	0	0
Effective Reset hours	0	0	0	0	0	0	0	0
Required hours	2034.25	2139.25	2208.00	2209.00	2160.00	2183.00	1944.00	2040.00
Train 2								
Planned unavailable hours	0.20	2.60	0	10.60	4.10	0.57	15.42	8.15
Unplanned unavailable hours	0	0	0	0	0	0	15.55	0
Fault exposure hours	0	0	0	0	0	0	0	0
Effective Reset hours	0	0	0	0	0	0	0	0
Required hours	2034.25	1967.00	2208.00	2209.00	2160.00	2183.00	1944.00	2040.00
Indicator value	0.4%	0.5%	0.5%	0.5%	0.5%	0.5%	0.5%	0.5%

Licensee Comments: none

Safety System Functional Failures (PWR)



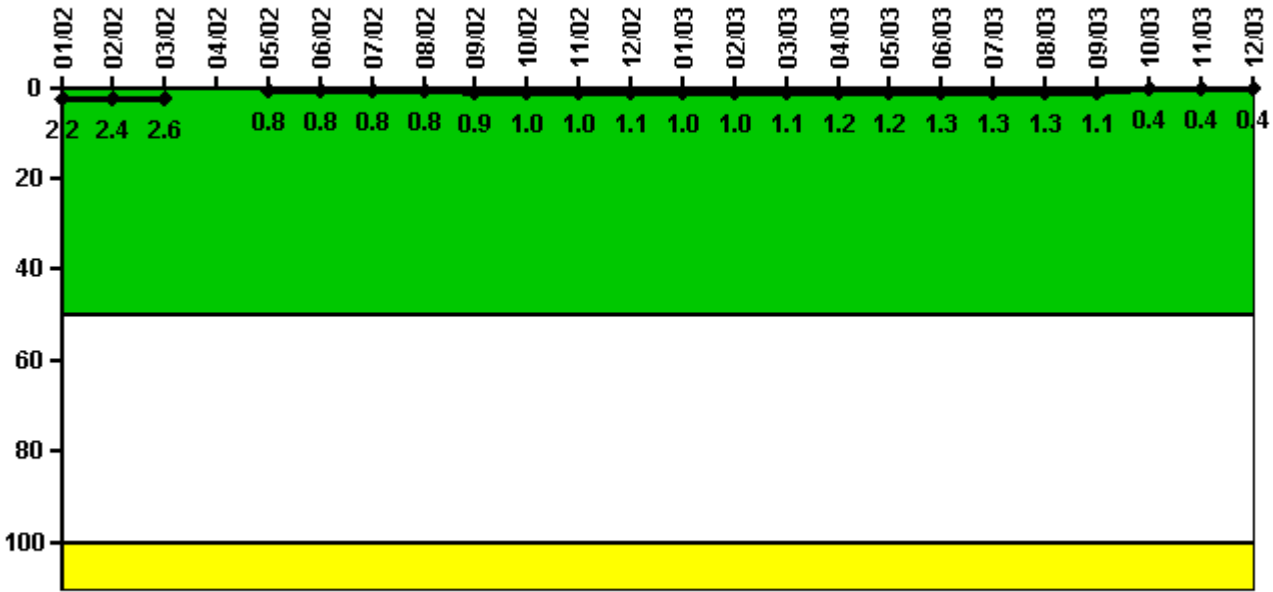
Thresholds: White > 5.0

Notes

Safety System Functional Failures (PWR)	1Q/02	2Q/02	3Q/02	4Q/02	1Q/03	2Q/03	3Q/03	4Q/03
Safety System Functional Failures	0	0	0	1	0	0	0	0
Indicator value	0	0	0	1	1	1	1	0

Licensee Comments: none

Reactor Coolant System Activity



Thresholds: White > 50.0 Yellow > 100.0

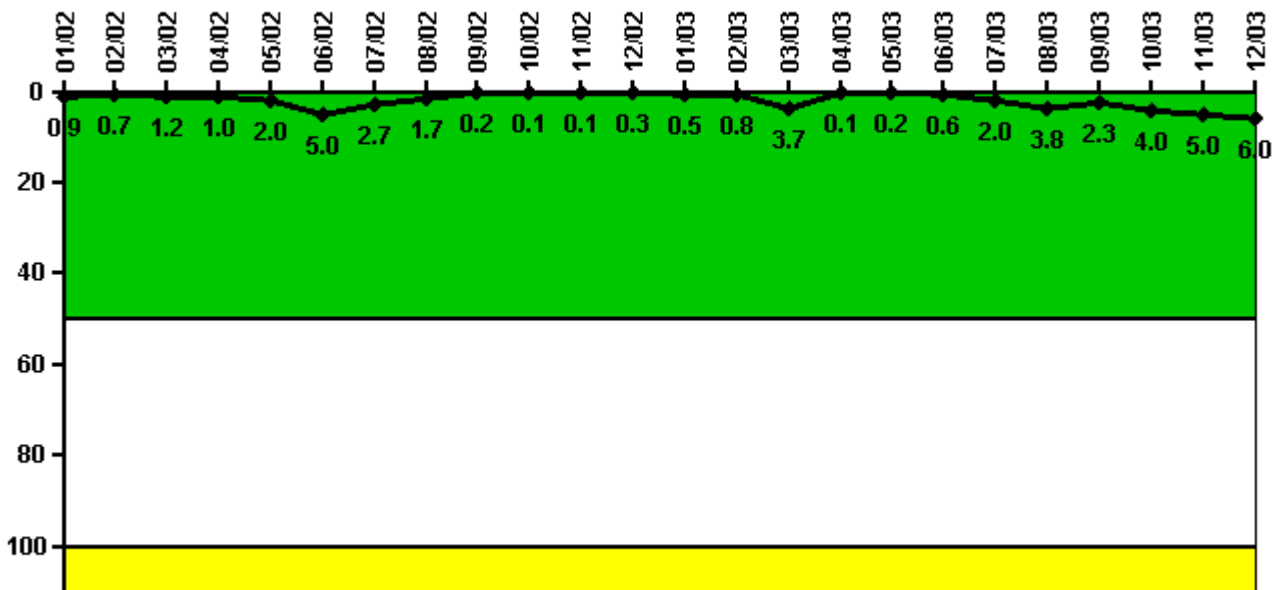
Notes

Reactor Coolant System Activity	1/02	2/02	3/02	4/02	5/02	6/02	7/02	8/02	9/02	10/02	11/02	12/02
Maximum activity	0.009930	0.010900	0.012000	N/A	0.004830	0.005350	0.005290	0.005390	0.005620	0.006220	0.006230	0.006730
Technical specification limit	0.5	0.5	0.5	0.6	0.6	0.6	0.6	0.6	0.6	0.6	0.6	0.6
Indicator value	2.2	2.4	2.6	N/A	0.8	0.8	0.8	0.8	0.9	1.0	1.0	1.1

Reactor Coolant System Activity	1/03	2/03	3/03	4/03	5/03	6/03	7/03	8/03	9/03	10/03	11/03	12/03
Maximum activity	0.006480	0.006540	0.007200	0.007570	0.007760	0.008590	0.008200	0.008480	0.007270	0.002740	0.002390	0.002690
Technical specification limit	0.6	0.6	0.6	0.6	0.6	0.6	0.6	0.6	0.6	0.6	0.6	0.6
Indicator value	1.0	1.0	1.1	1.2	1.2	1.3	1.3	1.3	1.1	0.4	0.4	0.4

Licensee Comments: none

Reactor Coolant System Leakage



Thresholds: White > 50.0 Yellow > 100.0

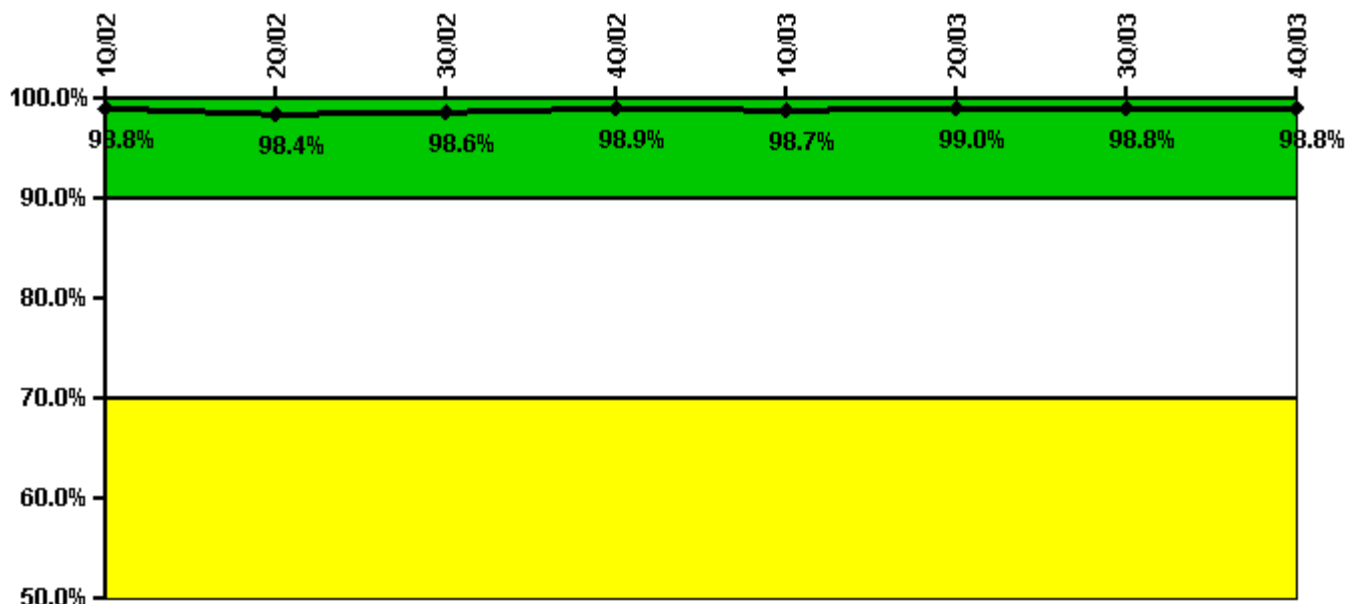
Notes

Reactor Coolant System Leakage	1/02	2/02	3/02	4/02	5/02	6/02	7/02	8/02	9/02	10/02	11/02	12/02
Maximum leakage	0.089	0.067	0.124	0.101	0.202	0.501	0.270	0.168	0.022	0.013	0.008	0.029
Technical specification limit	10.0	10.0	10.0	10.0	10.0	10.0	10.0	10.0	10.0	10.0	10.0	10.0
Indicator value	0.9	0.7	1.2	1.0	2.0	5.0	2.7	1.7	0.2	0.1	0.1	0.3

Reactor Coolant System Leakage	1/03	2/03	3/03	4/03	5/03	6/03	7/03	8/03	9/03	10/03	11/03	12/03
Maximum leakage	0.050	0.084	0.372	0.012	0.017	0.057	0.201	0.383	0.226	0.400	0.502	0.602
Technical specification limit	10.0	10.0	10.0	10.0	10.0	10.0	10.0	10.0	10.0	10.0	10.0	10.0
Indicator value	0.5	0.8	3.7	0.1	0.2	0.6	2.0	3.8	2.3	4.0	5.0	6.0

Licensee Comments: none

Drill/Exercise Performance



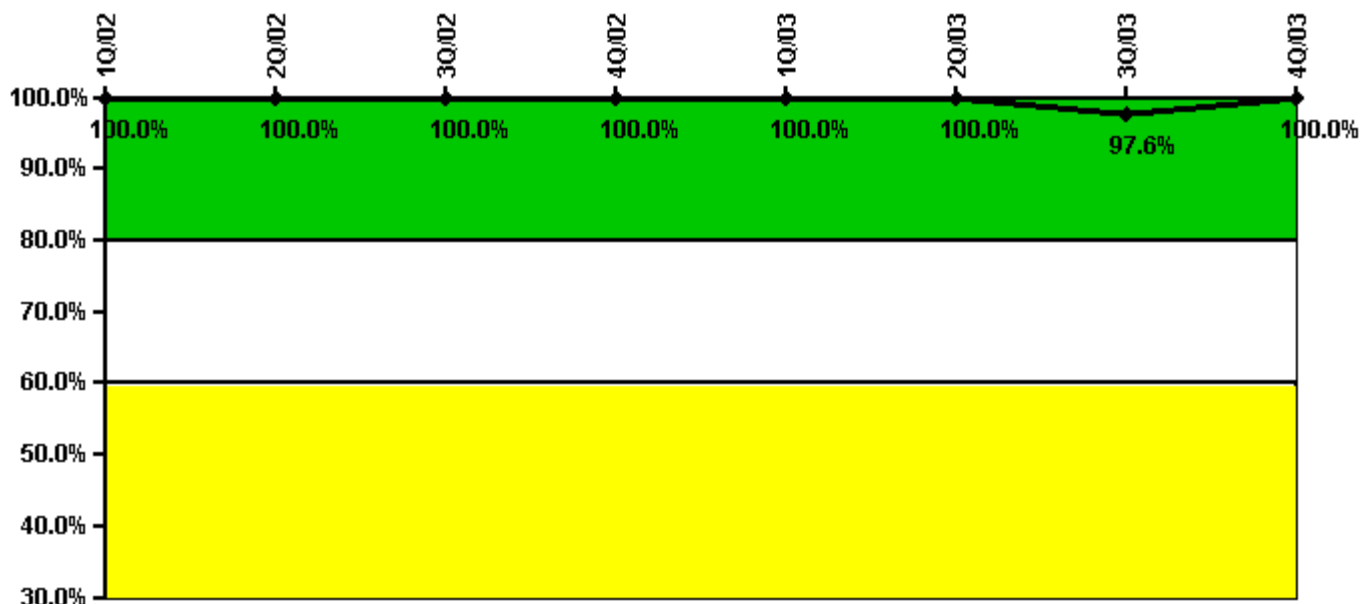
Thresholds: White < 90.0% Yellow < 70.0%

Notes

Drill/Exercise Performance	1Q/02	2Q/02	3Q/02	4Q/02	1Q/03	2Q/03	3Q/03	4Q/03
Successful opportunities	30.0	22.0	29.0	55.0	53.0	10.0	10.0	45.0
Total opportunities	30.0	23.0	29.0	55.0	54.0	10.0	10.0	46.0
Indicator value	98.8%	98.4%	98.6%	98.9%	98.7%	99.0%	98.8%	98.8%

Licensee Comments: none

ERO Drill Participation



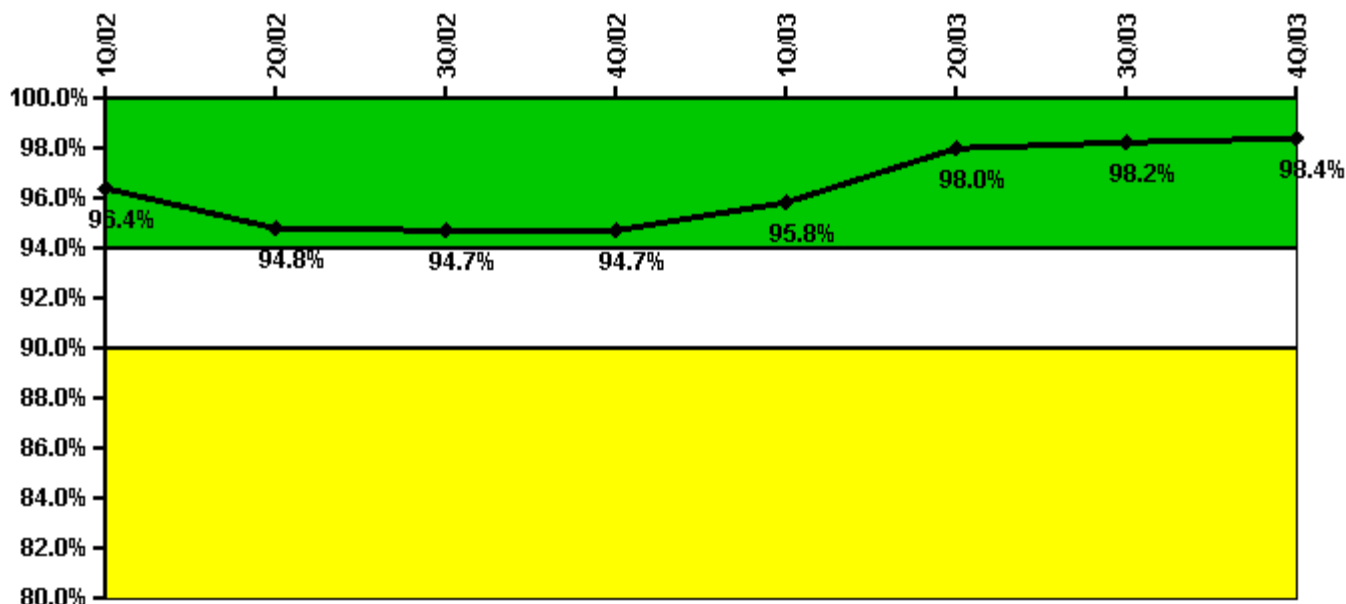
Thresholds: White < 80.0% Yellow < 60.0%

Notes

ERO Drill Participation	1Q/02	2Q/02	3Q/02	4Q/02	1Q/03	2Q/03	3Q/03	4Q/03
Participating Key personnel	78.0	78.0	78.0	78.0	83.0	81.0	81.0	83.0
Total Key personnel	78.0	78.0	78.0	78.0	83.0	81.0	83.0	83.0
Indicator value	100.0%	100.0%	100.0%	100.0%	100.0%	100.0%	97.6%	100.0%

Licensee Comments: none

Alert & Notification System



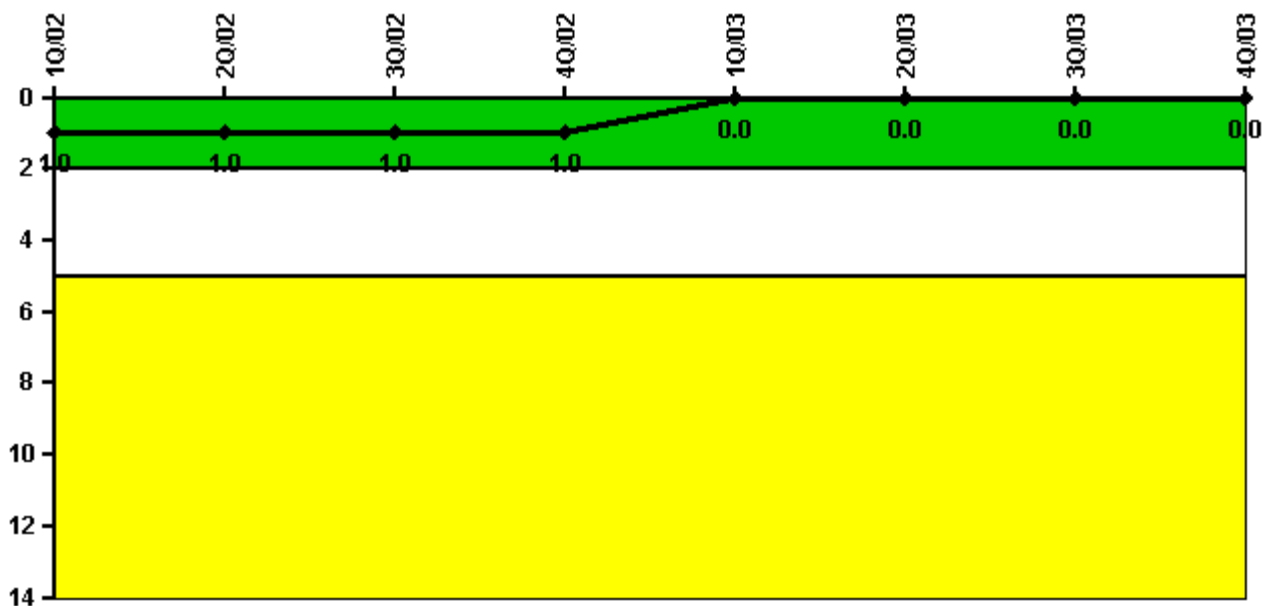
Thresholds: White < 94.0% Yellow < 90.0%

Notes

Alert & Notification System	1Q/02	2Q/02	3Q/02	4Q/02	1Q/03	2Q/03	3Q/03	4Q/03
Successful siren-tests	1094	1111	1122	1220	1147	1214	1227	1231
Total sirens-tests	1152	1248	1152	1248	1152	1248	1248	1248
Indicator value	96.4%	94.8%	94.7%	94.7%	95.8%	98.0%	98.2%	98.4%

Licensee Comments: none

Occupational Exposure Control Effectiveness



Thresholds: White > 2.0 Yellow > 5.0

Notes

Occupational Exposure Control Effectiveness	1Q/02	2Q/02	3Q/02	4Q/02	1Q/03	2Q/03	3Q/03	4Q/03
High radiation area occurrences	1	0	0	0	0	0	0	0
Very high radiation area occurrences	0	0	0	0	0	0	0	0
Unintended exposure occurrences	0	0	0	0	0	0	0	0
Indicator value	1	1	1	1	0	0	0	0

Licensee Comments: none

RETS/ODCM Radiological Effluent



Thresholds: White > 1.0 Yellow > 3.0

Notes

RETS/ODCM Radiological Effluent	1Q/02	2Q/02	3Q/02	4Q/02	1Q/03	2Q/03	3Q/03	4Q/03
RETS/ODCM occurrences	0	0	0	0	0	0	0	0
Indicator value	0	0	0	0	0	0	0	0

Licensee Comments: none

Protected Area Security Performance Index



Thresholds: White > 0.080

Notes

Protected Area Security Performance Index	1Q/02	2Q/02	3Q/02	4Q/02	1Q/03	2Q/03	3Q/03	4Q/03
IDS compensatory hours	9.81	16.64	6.91	4.50	22.42	3.05	12.23	38.49
CCTV compensatory hours	0	0	1.8	1.2	0	2.4	2.1	0.3
IDS normalization factor	1.35	1.35	1.35	1.35	1.35	1.35	1.35	1.35
CCTV normalization factor	1.0	1.0	1.0	1.0	1.0	1.0	1.0	1.0
Index Value	0.002	0.002	0.002	0.002	0.002	0.002	0.002	0.003

Licensee Comments: none

Personnel Screening Program



Thresholds: White > 2.0 Yellow > 5.0

Notes

Personnel Screening Program	1Q/02	2Q/02	3Q/02	4Q/02	1Q/03	2Q/03	3Q/03	4Q/03
Program failures	0	0	0	0	0	0	0	0
Indicator value	0	0	0	0	0	0	0	0

Licensee Comments: none

FFD/Personnel Reliability



Thresholds: White > 2.0 Yellow > 5.0

Notes

FFD/Personnel Reliability	1Q/02	2Q/02	3Q/02	4Q/02	1Q/03	2Q/03	3Q/03	4Q/03
Program Failures	0	0	0	0	0	0	0	0
Indicator value	0	0	0	0	0	0	0	0

Licensee Comments: none

▲ [PI Summary](#) | [Inspection Findings Summary](#) | [Reactor Oversight Process](#)

Last Modified: January 23, 2004