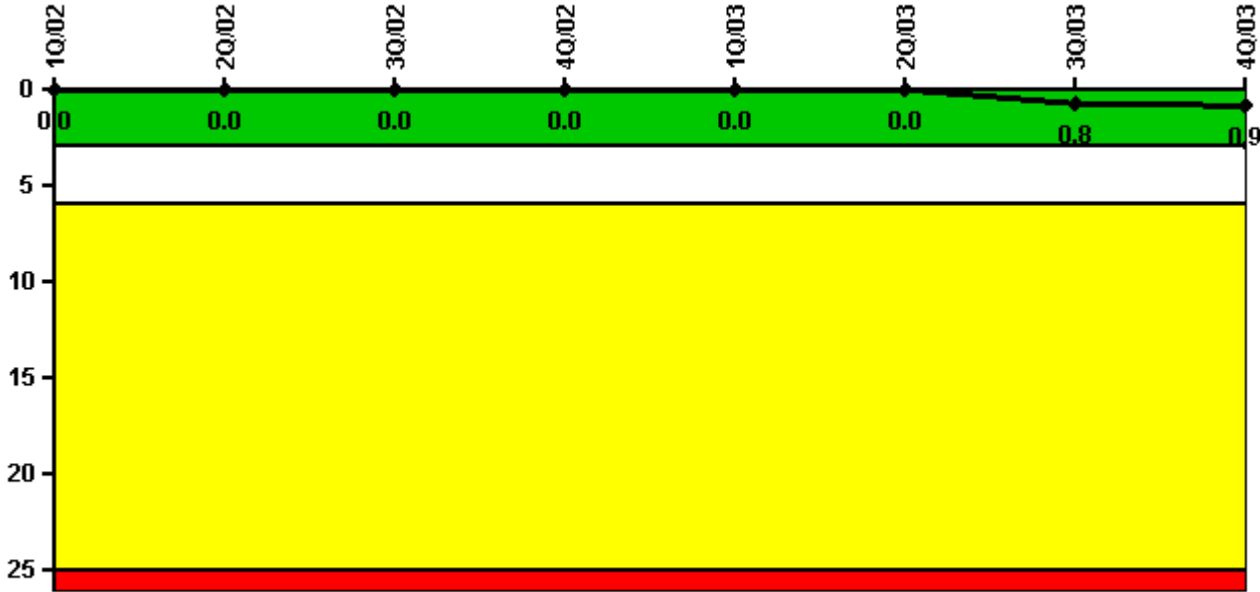


Fort Calhoun

4Q/2003 Performance Indicators

Licensee's General Comments: none

Unplanned Scrams per 7000 Critical Hrs



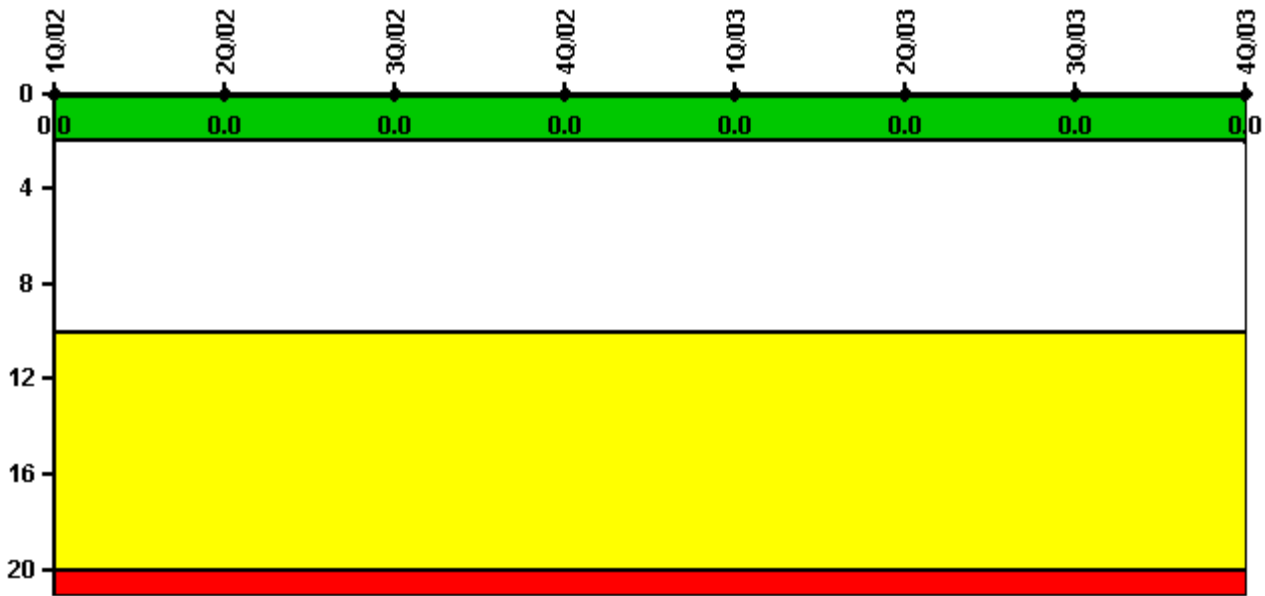
Thresholds: White > 3.0 Yellow > 6.0 Red > 25.0

Notes

Unplanned Scrams per 7000 Critical Hrs	1Q/02	2Q/02	3Q/02	4Q/02	1Q/03	2Q/03	3Q/03	4Q/03
Unplanned scrams	0	0	0	0	0	0	1.0	0
Critical hours	2160.0	1505.4	2208.0	2209.0	2160.0	2183.0	1773.0	1509.0
Indicator value	0	0	0	0	0	0	0.8	0.9

Licensee Comments: none

Scrams with Loss of Normal Heat Removal



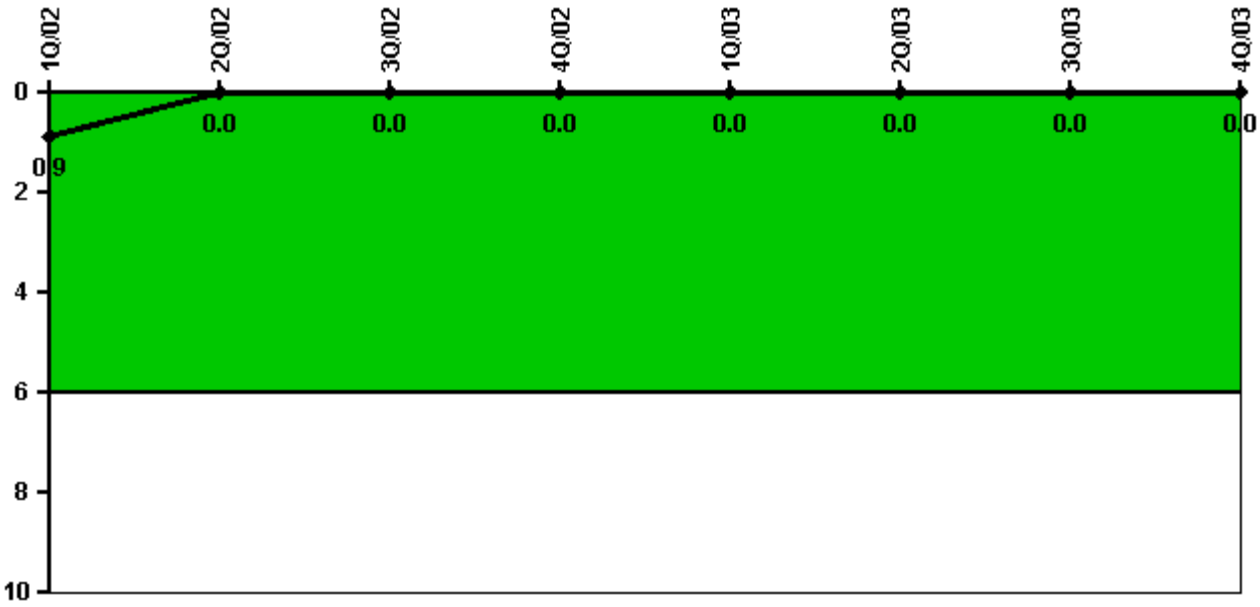
Thresholds: White > 2.0 Yellow > 10.0 Red > 20.0

Notes

Scrams with Loss of Normal Heat Removal	1Q/02	2Q/02	3Q/02	4Q/02	1Q/03	2Q/03	3Q/03	4Q/03
Scrams	0	0	0	0	0	0	0	0
Indicator value	0	0	0	0	0	0	0	0

Licensee Comments: none

Unplanned Power Changes per 7000 Critical Hrs



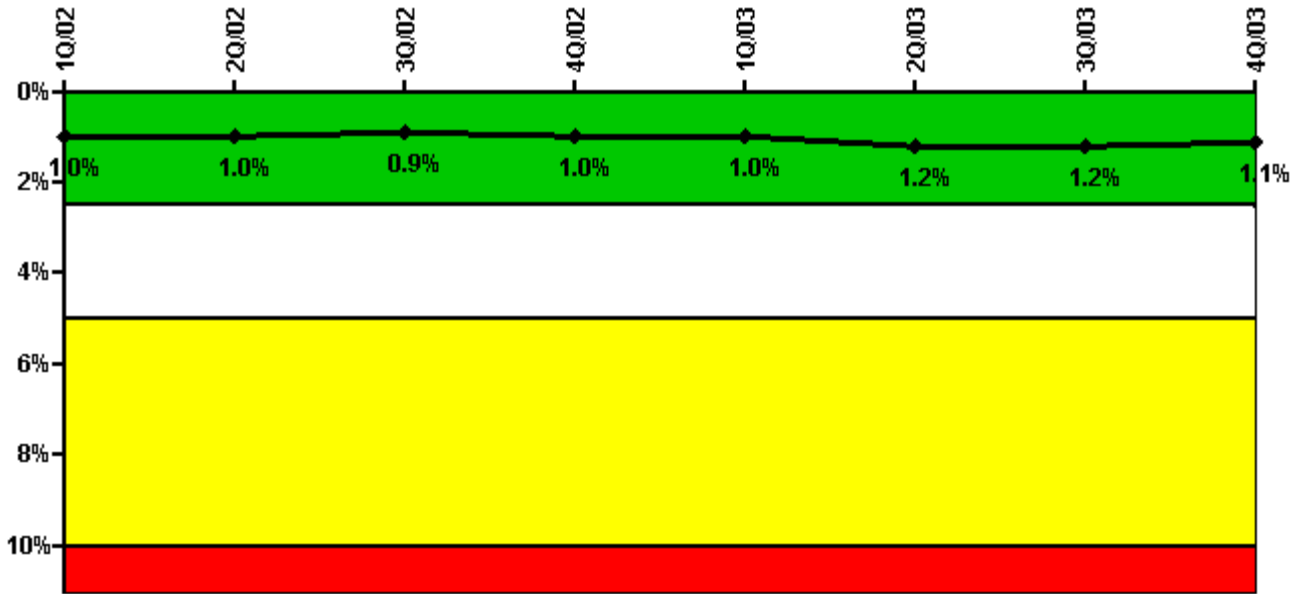
Thresholds: White > 6.0

Notes

Unplanned Power Changes per 7000 Critical Hrs	1Q/02	2Q/02	3Q/02	4Q/02	1Q/03	2Q/03	3Q/03	4Q/03
Unplanned power changes	0	0	0	0	0	0	0	0
Critical hours	2160.0	1505.4	2208.0	2209.0	2160.0	2183.0	1773.0	1509.0
Indicator value	0.9	0	0	0	0	0	0	0

Licensee Comments: none

Safety System Unavailability, Emergency AC Power



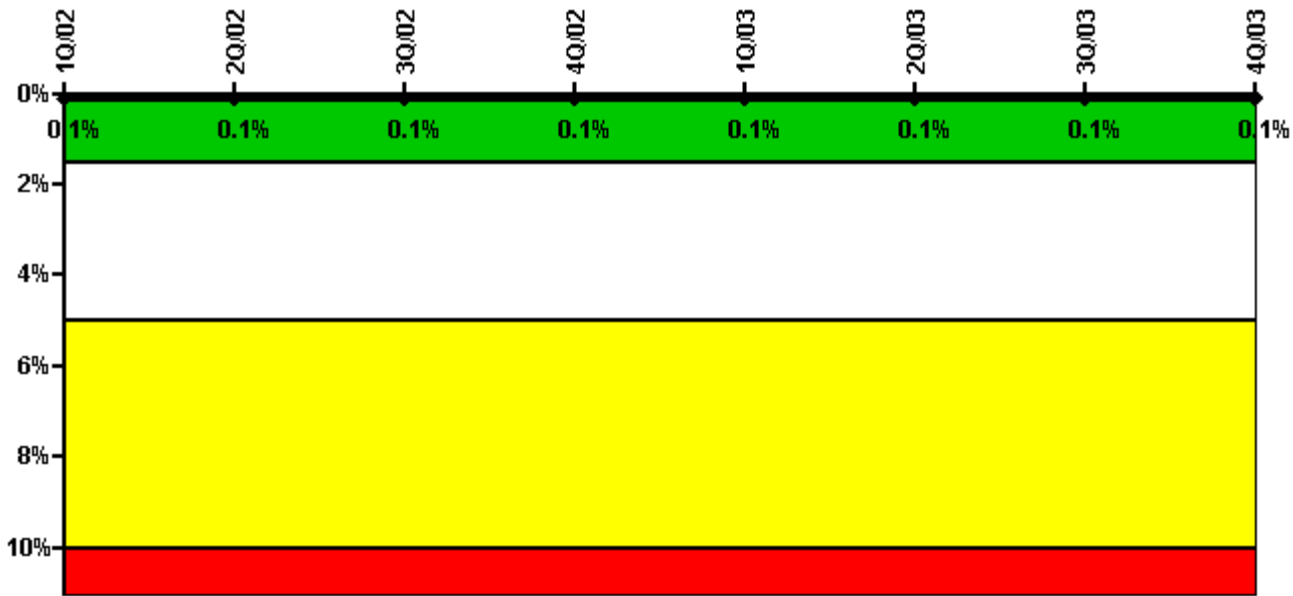
Thresholds: White > 2.5% Yellow > 5.0% Red > 10.0%

Notes

Safety System Unavailability, Emergency AC Power	1Q/02	2Q/02	3Q/02	4Q/02	1Q/03	2Q/03	3Q/03	4Q/03
Train 1								
Planned unavailable hours	15.40	14.65	10.30	19.04	15.90	75.40	16.78	19.46
Unplanned unavailable hours	0	0	0	0	0	0	0.98	0
Fault exposure hours	0	0	0	0	0	0	0	0
Effective Reset hours	0	0	0	0	0	0	0	0
Required hours	2160.00	2183.00	2208.00	2209.00	2160.00	2183.00	2208.00	2208.00
Train 2								
Planned unavailable hours	10.90	15.50	17.50	23.57	41.00	59.52	15.38	11.35
Unplanned unavailable hours	0	0	6.10	0	0	0	0.95	0
Fault exposure hours	0	0	0	0	0	0	0	0
Effective Reset hours	0	0	0	0	0	0	0	0
Required hours	2160.00	2183.00	2208.00	2209.00	2160.00	2183.00	2208.00	2208.00
Indicator value	1.0%	1.0%	0.9%	1.0%	1.0%	1.2%	1.2%	1.1%

Licensee Comments: none

Safety System Unavailability, High Pressure Injection System (HPSI)



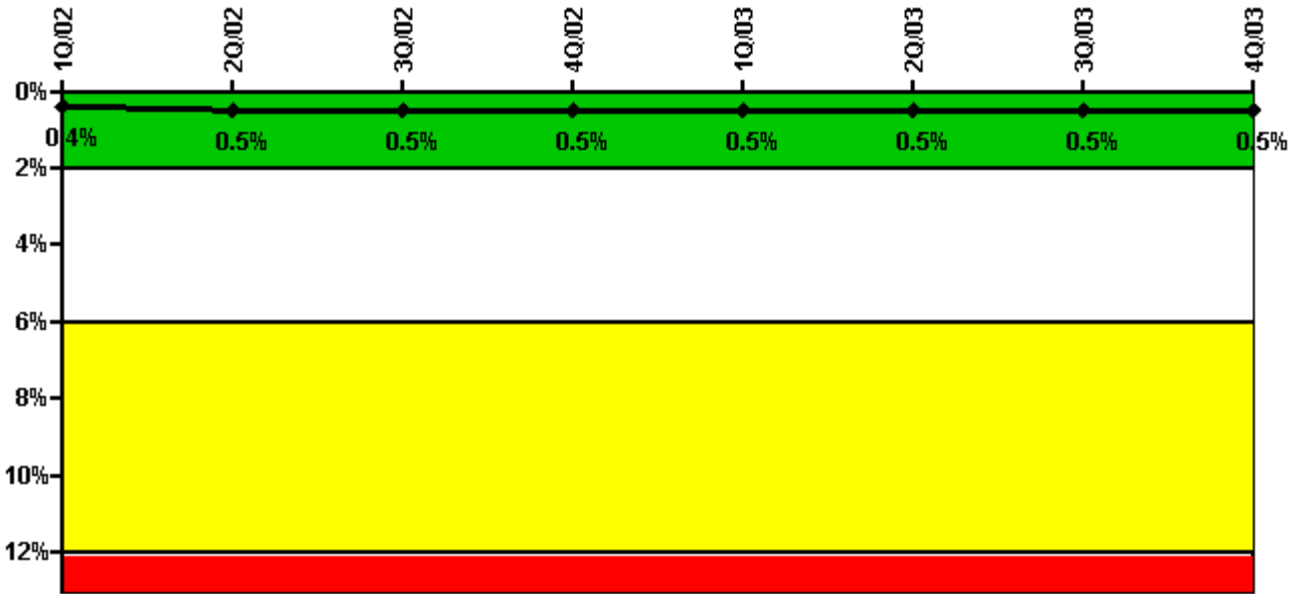
Thresholds: White > 1.5% Yellow > 5.0% Red > 10.0%

Notes

Safety System Unavailability, High Pressure Injection System (HPSI)	1Q/02	2Q/02	3Q/02	4Q/02	1Q/03	2Q/03	3Q/03	4Q/03
Train 1								
Planned unavailable hours	0	0.28	0	0.20	0	0.20	0.20	0
Unplanned unavailable hours	0	0	0	0	0	0	0	0
Fault exposure hours	0	0	0	0	0	0	0	0
Effective Reset hours	0	0	0	0	0	0	0	0
Required hours	2160.00	1511.00	2208.00	2209.00	2160.00	2183.00	1773.00	1509.00
Train 2								
Planned unavailable hours	0.40	11.68	1.40	8.00	0.40	12.32	11.90	0.62
Unplanned unavailable hours	0	0	0	0	0	0	0	0
Fault exposure hours	0	0	0	0	0	0	0	0
Effective Reset hours	0	0	0	0	0	0	0	0
Required hours	2160.00	1511.00	2208.00	2209.00	2160.00	2183.00	1773.00	1509.00
Indicator value	0.1%	0.1%	0.1%	0.1%	0.1%	0.1%	0.1%	0.1%

Licensee Comments: none

Safety System Unavailability, Heat Removal System (AFW)



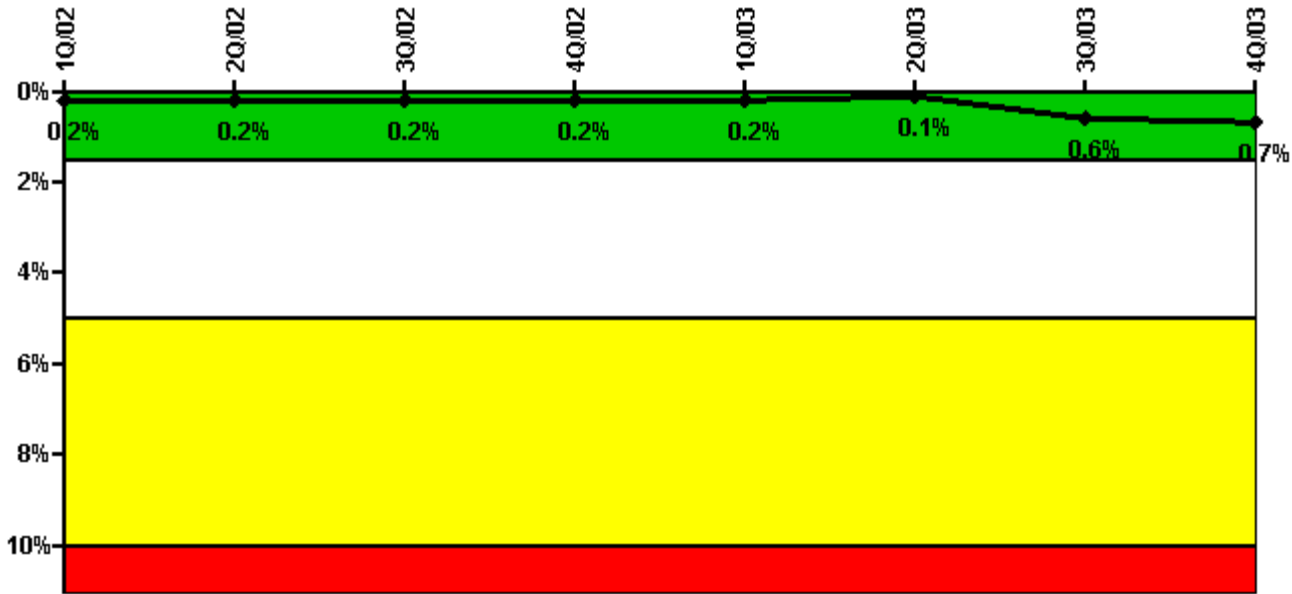
Thresholds: White > 2.0% Yellow > 6.0% Red > 12.0%

Notes

Safety System Unavailability, Heat Removal System (AFW)	1Q/02	2Q/02	3Q/02	4Q/02	1Q/03	2Q/03	3Q/03	4Q/03
Train 1								
Planned unavailable hours	11.22	7.00	1.31	5.08	13.60	21.68	5.90	6.05
Unplanned unavailable hours	0	0	0	0	0	0	0	0
Fault exposure hours	0	0	0	0	0	0	0	0
Effective Reset hours	0	0	0	0	0	0	0	0
Required hours	2160.00	1505.40	2208.00	2209.00	2160.00	2183.00	1773.00	1509.00
Train 2								
Planned unavailable hours	6.60	4.20	11.32	7.24	27.10	12.00	12.00	4.93
Unplanned unavailable hours	0	0	0	0	0	0	0	0
Fault exposure hours	0	0	0	0	0	0	0	0
Effective Reset hours	0	0	0	0	0	0	0	0
Required hours	2160.00	1505.40	2208.00	2209.00	2160.00	2183.00	1773.00	1509.00
Indicator value	0.4%	0.5%	0.5%	0.5%	0.5%	0.5%	0.5%	0.5%

Licensee Comments: none

Safety System Unavailability, Residual Heat Removal System



Thresholds: White > 1.5% Yellow > 5.0% Red > 10.0%

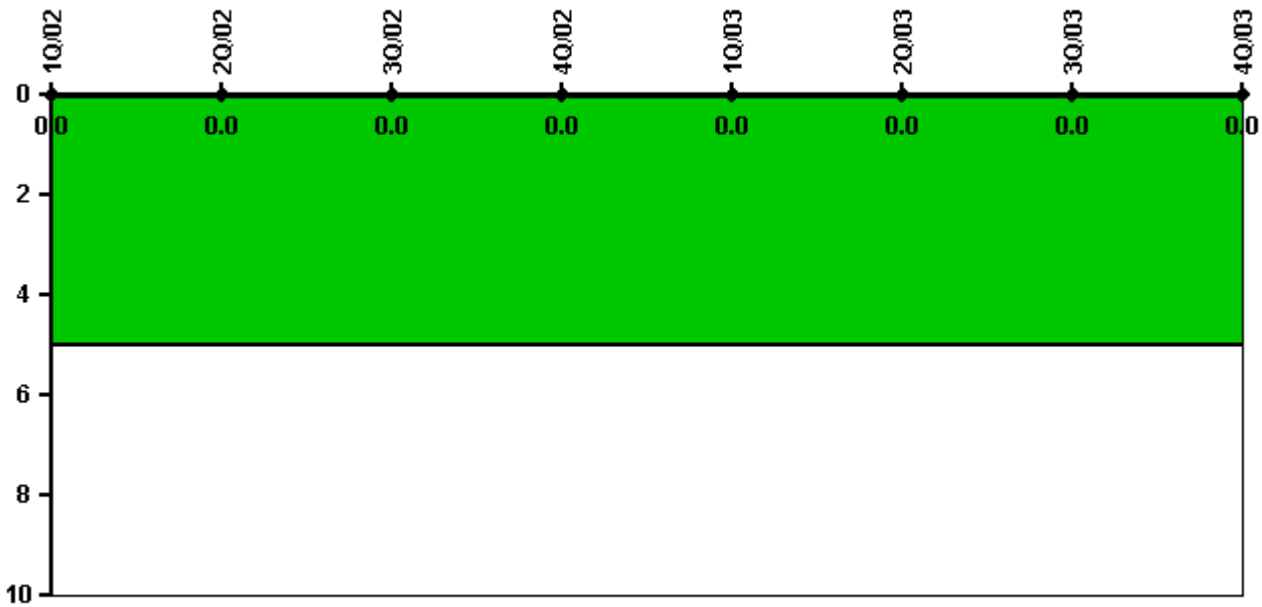
Notes

Safety System Unavailability, Residual Heat Removal System	1Q/02	2Q/02	3Q/02	4Q/02	1Q/03	2Q/03	3Q/03	4Q/03
Train 1								
Planned unavailable hours	11.50	12.60	0.80	0.40	11.90	11.42	38.03	10.70
Unplanned unavailable hours	0	0	0	0	0	0	0	0
Fault exposure hours	0	0	0	0	0	0	0	0
Effective Reset hours	0	0	0	0	0	0	0	0
Required hours	2160.00	1511.00	2208.00	2209.00	2160.00	2183.00	1773.00	1509.00
Train 2								
Planned unavailable hours	0	1.50	0.40	0.40	0	0.20	1.48	0
Unplanned unavailable hours	0	0	0	0	0	0	0	0
Fault exposure hours	0	0	0	0	0	0	0	0
Effective Reset hours	0	0	0	0	0	0	0	0
Required hours	2160.00	1511.00	2208.00	2209.00	2160.00	2183.00	1773.00	1509.00
Train 3								
Planned unavailable hours	0	0	0	0	0	0	1.40	0
Unplanned unavailable hours	0	0	0	0	0	0	0	0
Fault exposure hours	0	0	0	0	0	0	0	0
Effective Reset hours	0	0	0	0	0	0	0	0
Required hours	0	540.30	0	0	0	0	306.50	220.00
Train 4								
Planned unavailable hours	0	0	0	0	0	0	45.90	0
Unplanned unavailable hours	0	0	0	0	0	0	0	0
Fault exposure hours	0	0	0	0	0	0	0	0
Effective Reset hours	0	0	0	0	0	0	0	0
Required hours	0	540.30	0	0	0	0	306.50	220.00

Indicator value	0.2%	0.2%	0.2%	0.2%	0.2%	0.1%	0.6%	0.7%

Licensee Comments: none

Safety System Functional Failures (PWR)



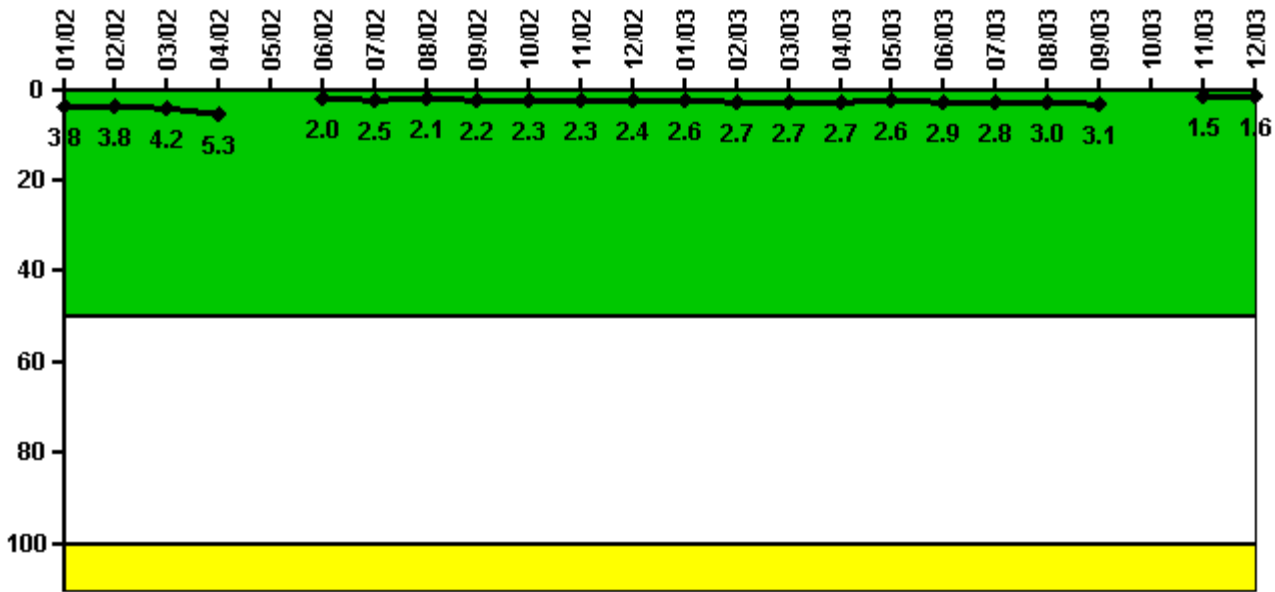
Thresholds: White > 5.0

Notes

Safety System Functional Failures (PWR)	1Q/02	2Q/02	3Q/02	4Q/02	1Q/03	2Q/03	3Q/03	4Q/03
Safety System Functional Failures	0	0	0	0	0	0	0	0
Indicator value	0	0	0	0	0	0	0	0

Licensee Comments: none

Reactor Coolant System Activity



Thresholds: White > 50.0 Yellow > 100.0

Notes

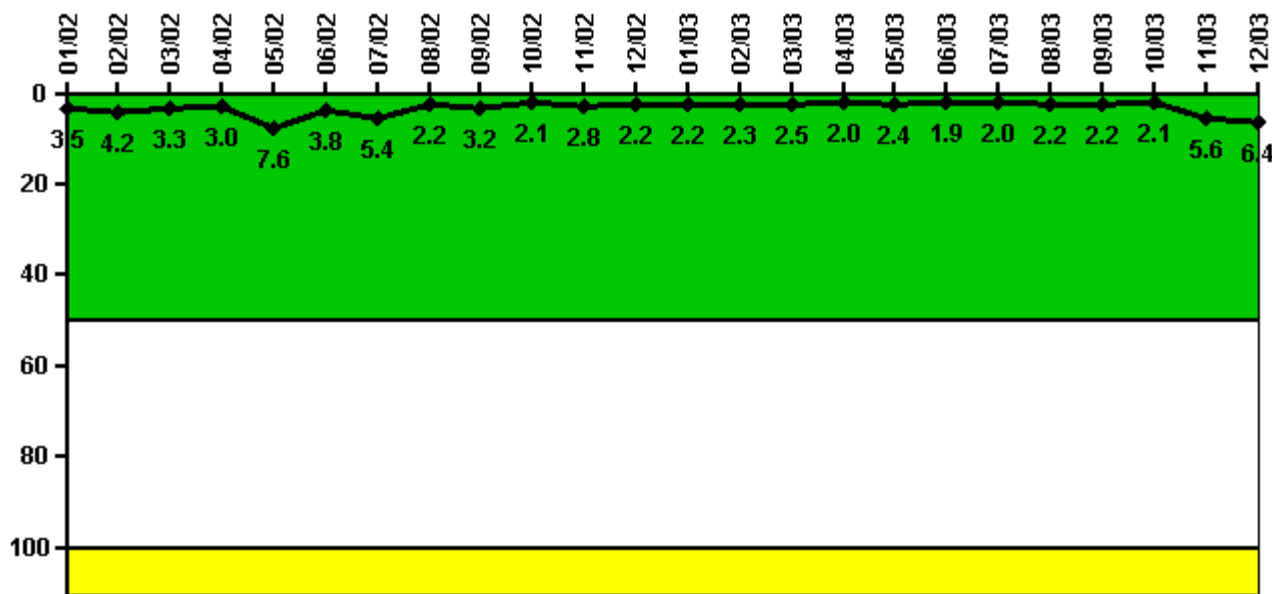
Reactor Coolant System Activity	1/02	2/02	3/02	4/02	5/02	6/02	7/02	8/02	9/02	10/02	11/02	12/02
Maximum activity	0.037700	0.038400	0.041500	0.053100	N/A	0.020000	0.025200	0.021300	0.022100	0.022800	0.023100	0.024000
Technical specification limit	1.0	1.0	1.0	1.0	1.0	1.0	1.0	1.0	1.0	1.0	1.0	1.0
Indicator value	3.8	3.8	4.2	5.3	N/A	2.0	2.5	2.1	2.2	2.3	2.3	2.4

Reactor Coolant System Activity	1/03	2/03	3/03	4/03	5/03	6/03	7/03	8/03	9/03	10/03	11/03	12/03
Maximum activity	0.025900	0.027000	0.026800	0.026800	0.025700	0.028600	0.027800	0.029900	0.030500	N/A	0.015000	0.015600
Technical specification limit	1.0	1.0	1.0	1.0	1.0	1.0	1.0	1.0	1.0	1.0	1.0	1.0
Indicator value	2.6	2.7	2.7	2.7	2.6	2.9	2.8	3.0	3.1	N/A	1.5	1.6

Licensee Comments:

12/03: The plant was in a refuel outage in the month of October.

Reactor Coolant System Leakage



Thresholds: White > 50.0 Yellow > 100.0

Notes

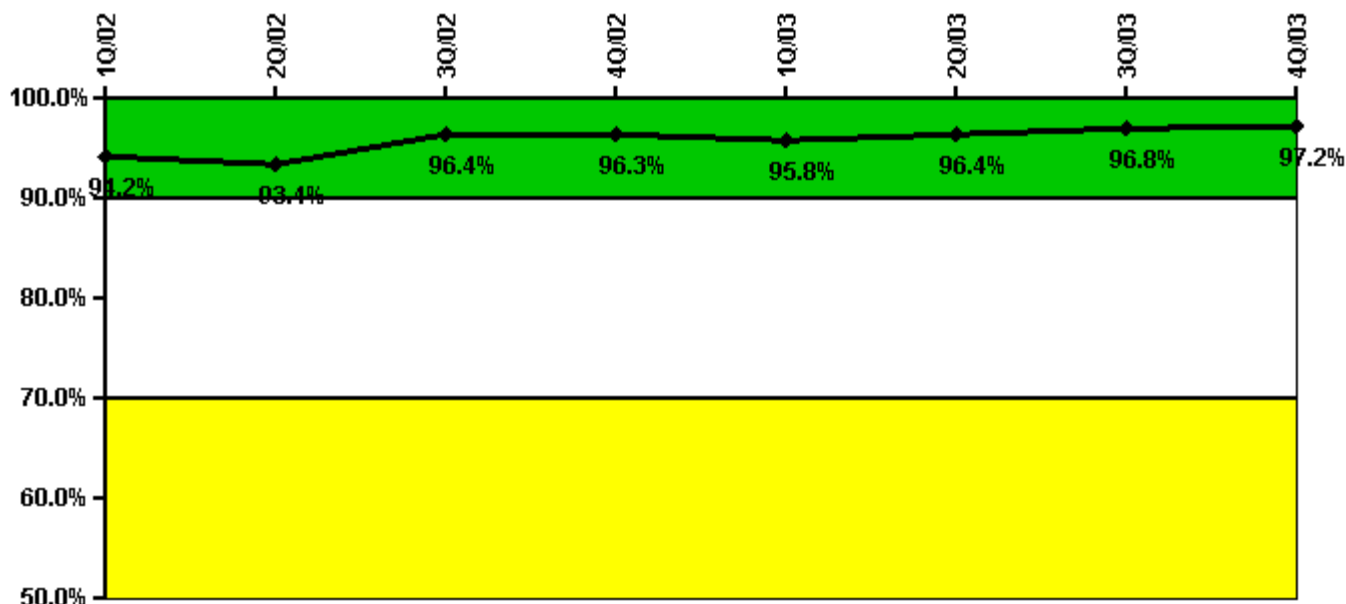
Reactor Coolant System Leakage	1/02	2/02	3/02	4/02	5/02	6/02	7/02	8/02	9/02	10/02	11/02	12/02
Maximum leakage	0.346	0.422	0.332	0.298	0.758	0.380	0.539	0.216	0.315	0.210	0.276	0.216
Technical specification limit	10.0	10.0	10.0	10.0	10.0	10.0	10.0	10.0	10.0	10.0	10.0	10.0
Indicator value	3.5	4.2	3.3	3.0	7.6	3.8	5.4	2.2	3.2	2.1	2.8	2.2

Reactor Coolant System Leakage	1/03	2/03	3/03	4/03	5/03	6/03	7/03	8/03	9/03	10/03	11/03	12/03
Maximum leakage	0.223	0.230	0.248	0.204	0.241	0.186	0.202	0.223	0.215	0.213	0.557	0.636
Technical specification limit	10.0	10.0	10.0	10.0	10.0	10.0	10.0	10.0	10.0	10.0	10.0	10.0
Indicator value	2.2	2.3	2.5	2.0	2.4	1.9	2.0	2.2	2.2	2.1	5.6	6.4

Licensee Comments:

12/03: The elevated RCS leakage is being constantly monitored for impact. The leakage is verified as coming from "C" RC pump seal and going to the Reactor Coolant Drain Tank. A station outage to repair the seal is scheduled for Spring 2004.

Drill/Exercise Performance



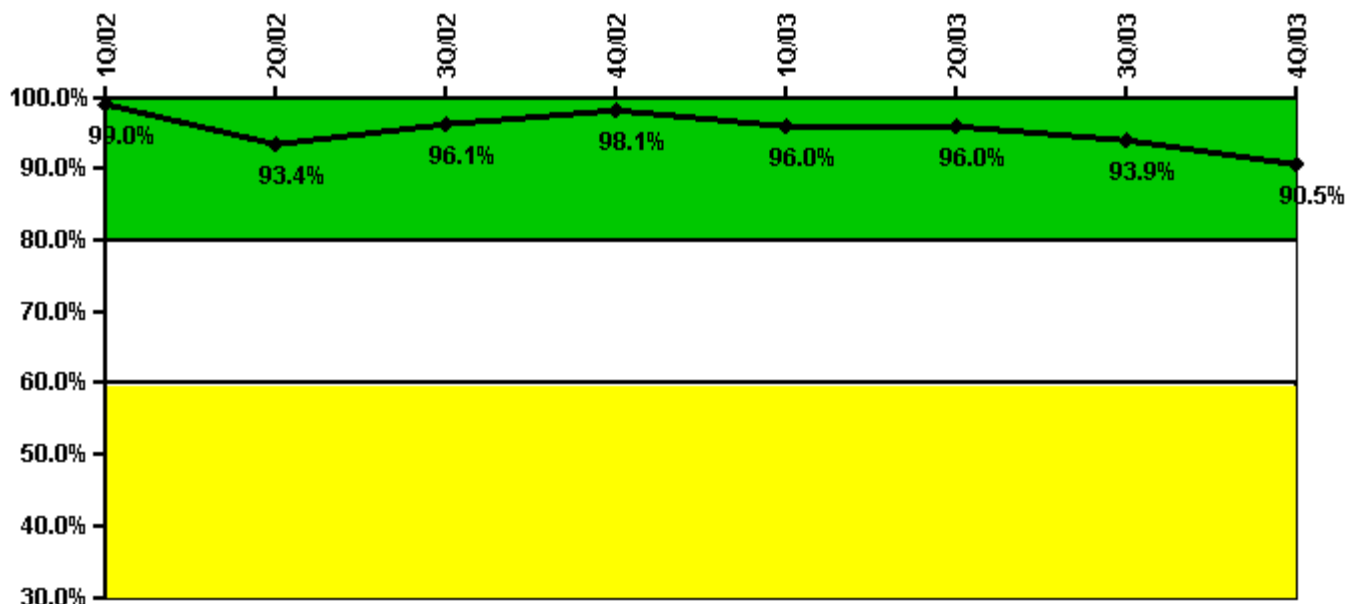
Thresholds: White < 90.0% Yellow < 70.0%

Notes

Drill/Exercise Performance	1Q/02	2Q/02	3Q/02	4Q/02	1Q/03	2Q/03	3Q/03	4Q/03
Successful opportunities	62.0	21.0	43.0	10.0	7.0	15.0	3.0	10.0
Total opportunities	64.0	22.0	43.0	10.0	8.0	16.0	3.0	10.0
Indicator value	94.2%	93.4%	96.4%	96.3%	95.8%	96.4%	96.8%	97.2%

Licensee Comments: none

ERO Drill Participation



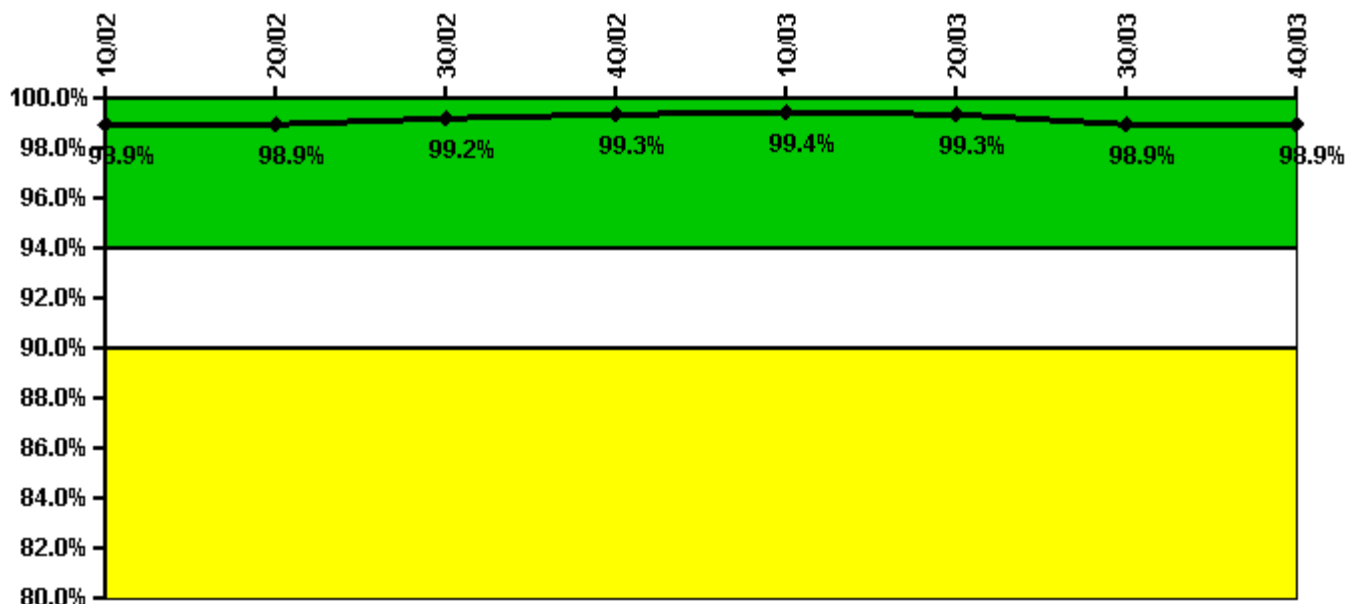
Thresholds: White < 80.0% Yellow < 60.0%

Notes

ERO Drill Participation	1Q/02	2Q/02	3Q/02	4Q/02	1Q/03	2Q/03	3Q/03	4Q/03
Participating Key personnel	98.0	99.0	99.0	101.0	97.0	95.0	92.0	95.0
Total Key personnel	99.0	106.0	103.0	103.0	101.0	99.0	98.0	105.0
Indicator value	99.0%	93.4%	96.1%	98.1%	96.0%	96.0%	93.9%	90.5%

Licensee Comments: none

Alert & Notification System



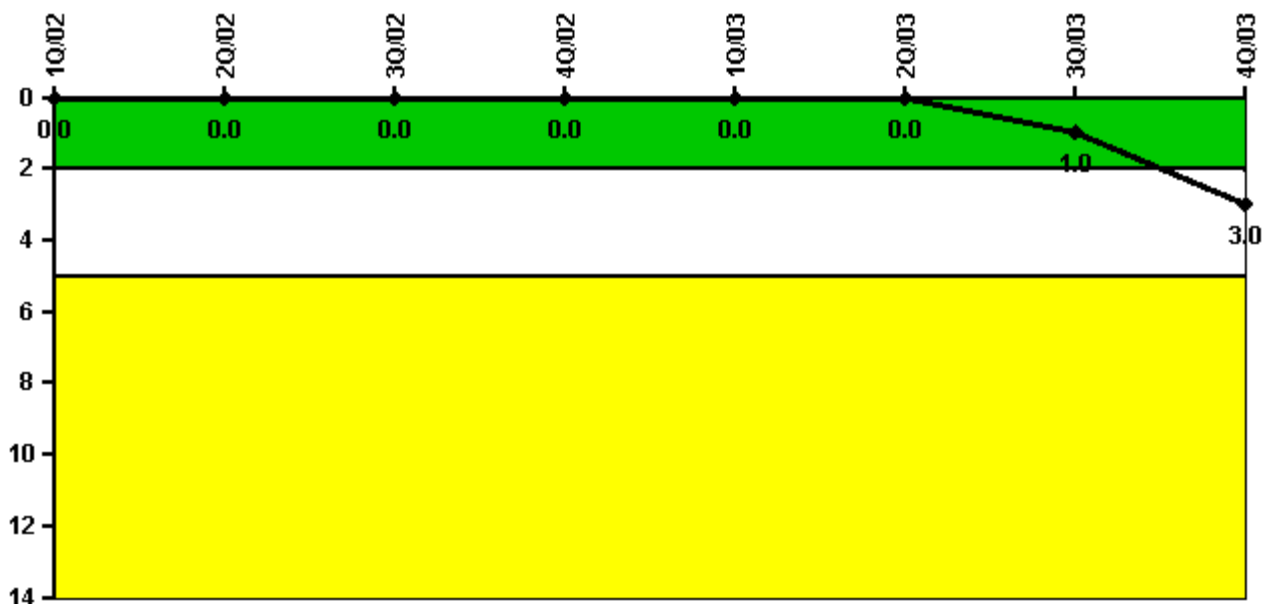
Thresholds: White < 94.0% Yellow < 90.0%

Notes

Alert & Notification System	1Q/02	2Q/02	3Q/02	4Q/02	1Q/03	2Q/03	3Q/03	4Q/03
Successful siren-tests	701	803	900	704	804	700	888	703
Total sirens-tests	707	808	909	707	807	707	909	707
Indicator value	98.9%	98.9%	99.2%	99.3%	99.4%	99.3%	98.9%	98.9%

Licensee Comments: none

Occupational Exposure Control Effectiveness



Thresholds: White > 2.0 Yellow > 5.0

Notes

Occupational Exposure Control Effectiveness	1Q/02	2Q/02	3Q/02	4Q/02	1Q/03	2Q/03	3Q/03	4Q/03
High radiation area occurrences	0	0	0	0	0	0	1	2
Very high radiation area occurrences	0	0	0	0	0	0	0	0
Unintended exposure occurrences	0	0	0	0	0	0	0	0
Indicator value	0	0	0	0	0	0	1	3

Licensee Comments:

4Q/03: Two issues this quarter are making this performance indicator white. In one, the definition of adequacy controls on a high radiation area is being addressed by the station. In the other, the adequacy of barriers to prevent access to high radiation areas is being addressed using industry support to work with the regulators.

RETS/ODCM Radiological Effluent



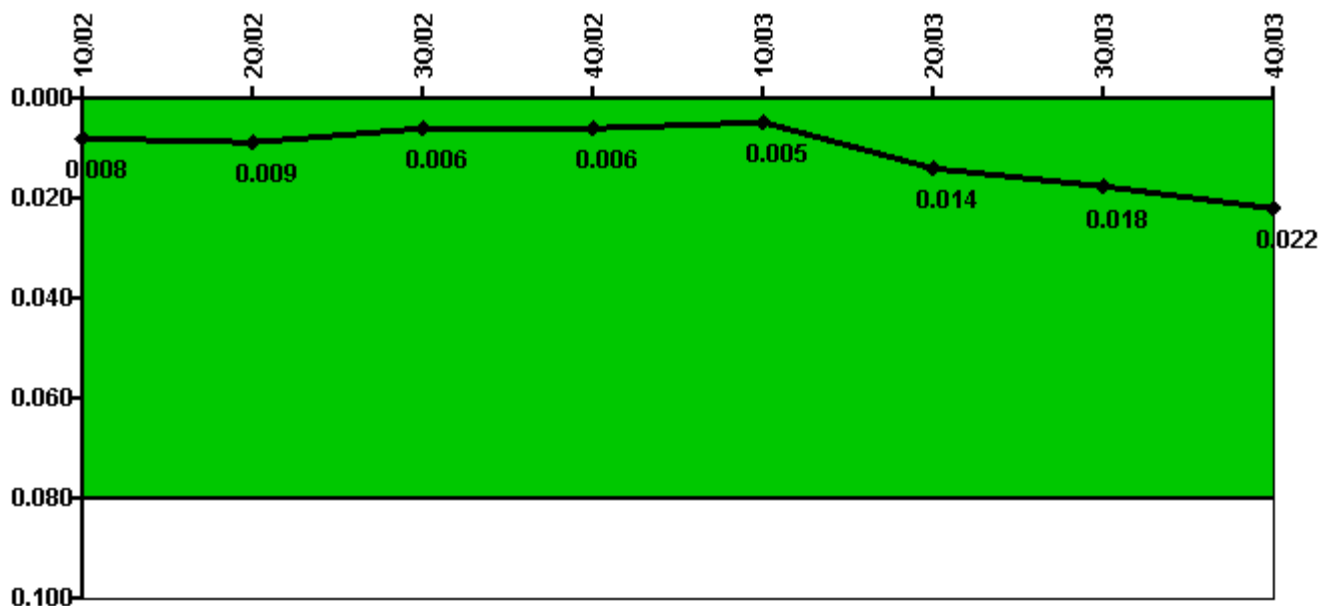
Thresholds: White > 1.0 Yellow > 3.0

Notes

RETS/ODCM Radiological Effluent	1Q/02	2Q/02	3Q/02	4Q/02	1Q/03	2Q/03	3Q/03	4Q/03
RETS/ODCM occurrences	0	0	0	0	0	0	0	0
Indicator value	0	0	0	0	0	0	0	0

Licensee Comments: none

Protected Area Security Performance Index



Thresholds: White > 0.080

Notes

Protected Area Security Performance Index	1Q/02	2Q/02	3Q/02	4Q/02	1Q/03	2Q/03	3Q/03	4Q/03
IDS compensatory hours	80.60	44.60	3.50	17.60	60.00	261.40	112.90	117.00
CCTV compensatory hours	0	0	0	0	0	3.6	8.8	0
IDS normalization factor	1.45	1.45	1.45	1.45	1.45	1.45	1.45	1.45
CCTV normalization factor	1.0	1.0	1.0	1.0	1.0	1.0	1.0	1.0
Index Value	0.008	0.009	0.006	0.006	0.005	0.014	0.018	0.022

Licensee Comments: none

Personnel Screening Program



Thresholds: White > 2.0 Yellow > 5.0

Notes

Personnel Screening Program	1Q/02	2Q/02	3Q/02	4Q/02	1Q/03	2Q/03	3Q/03	4Q/03
Program failures	0	0	0	0	0	0	0	0
Indicator value	0	0	0	0	0	0	0	0

Licensee Comments: none

FFD/Personnel Reliability



Thresholds: White > 2.0 Yellow > 5.0

Notes

FFD/Personnel Reliability	1Q/02	2Q/02	3Q/02	4Q/02	1Q/03	2Q/03	3Q/03	4Q/03
Program Failures	0	0	0	0	0	0	0	0
Indicator value	0	0	0	0	0	0	0	0

Licensee Comments: none

▲ [PI Summary](#) | [Inspection Findings Summary](#) | [Reactor Oversight Process](#)

Last Modified: January 23, 2004