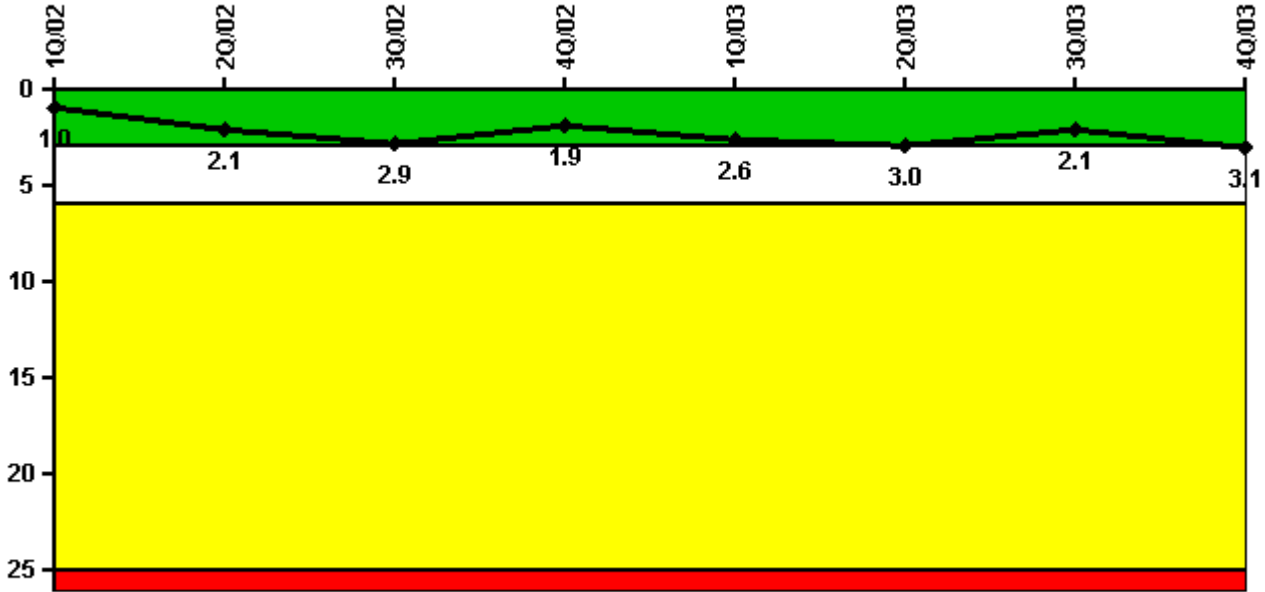


D.C. Cook 2

4Q/2003 Performance Indicators

Licensee's General Comments: none

Unplanned Scrams per 7000 Critical Hrs



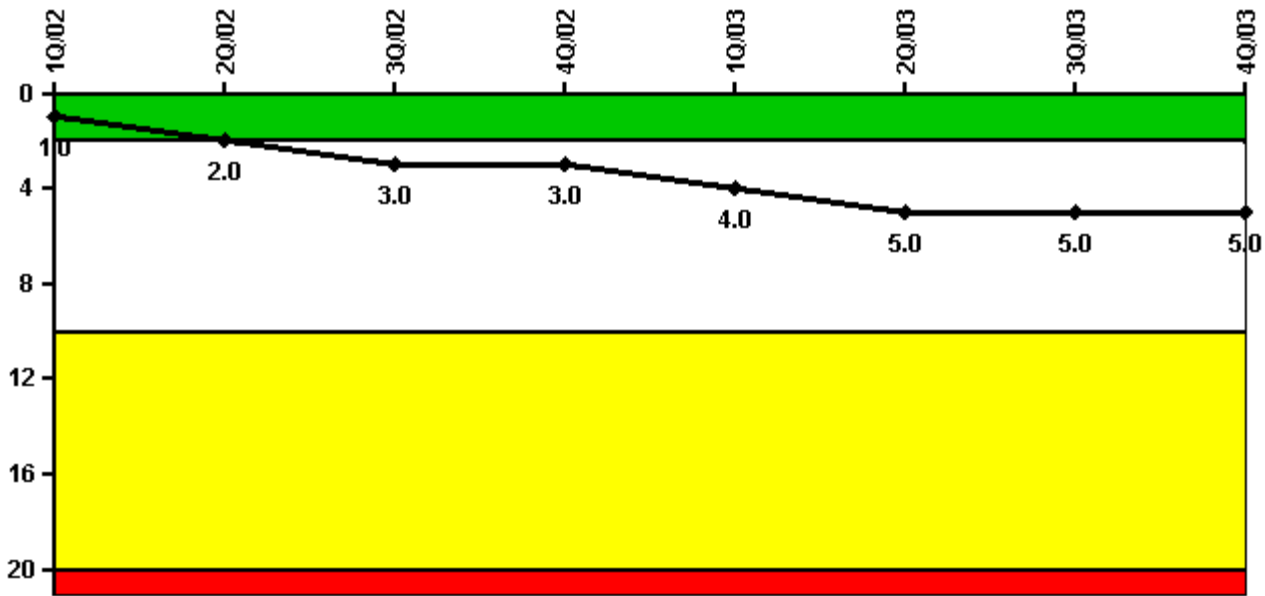
Thresholds: White > 3.0 Yellow > 6.0 Red > 25.0

Notes

Unplanned Scrams per 7000 Critical Hrs	1Q/02	2Q/02	3Q/02	4Q/02	1Q/03	2Q/03	3Q/03	4Q/03
Unplanned scrams	0	1.0	1.0	0	1.0	1.0	0	1.0
Critical hours	1261.5	1965.5	2027.5	2209.0	1884.6	824.0	1832.1	2174.5
Indicator value	1.0	2.1	2.9	1.9	2.6	3.0	2.1	3.1

Licensee Comments: none

Scrams with Loss of Normal Heat Removal



Thresholds: White > 2.0 Yellow > 10.0 Red > 20.0

Notes

Scrams with Loss of Normal Heat Removal	1Q/02	2Q/02	3Q/02	4Q/02	1Q/03	2Q/03	3Q/03	4Q/03
Scrams	0	1.0	1.0	0	1.0	1.0	0	0
Indicator value	1.0	2.0	3.0	3.0	4.0	5.0	5.0	5.0

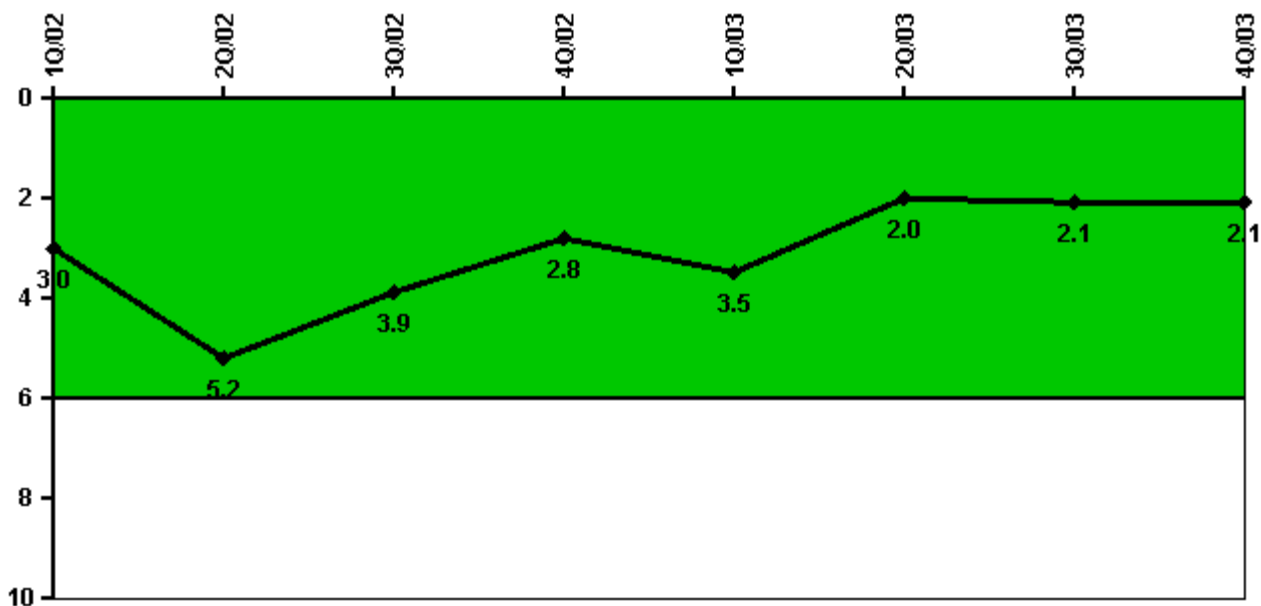
Licensee Comments:

4Q/03: A change report is being submitted to "count" unplanned scrams from the 4th QTR 2001 and 1st QTR 2003 in this indicator. These scrams are currently being reviewed under the FAQ process. If the results of the FAQ process determine that the scrams do not count for this indicator, a change report will be submitted to remove the scrams.

3Q/03: One frequently asked question (FAQ) that was previously submitted was dispositioned to count against this performance indicator as a scram with loss of normal heat removal in the 3rd quarter of 2002. One FAQ that was previously submitted is still open. Disposition of this FAQ is required to evaluate two reactor scrams.

1Q/03: Two frequently asked questions have been submitted to address three reactor scrams that the NRC resident inspector believes should be counted under this reporting criteria. Final resolution may result in the green/white performance indicator threshold being exceeded.

Unplanned Power Changes per 7000 Critical Hrs



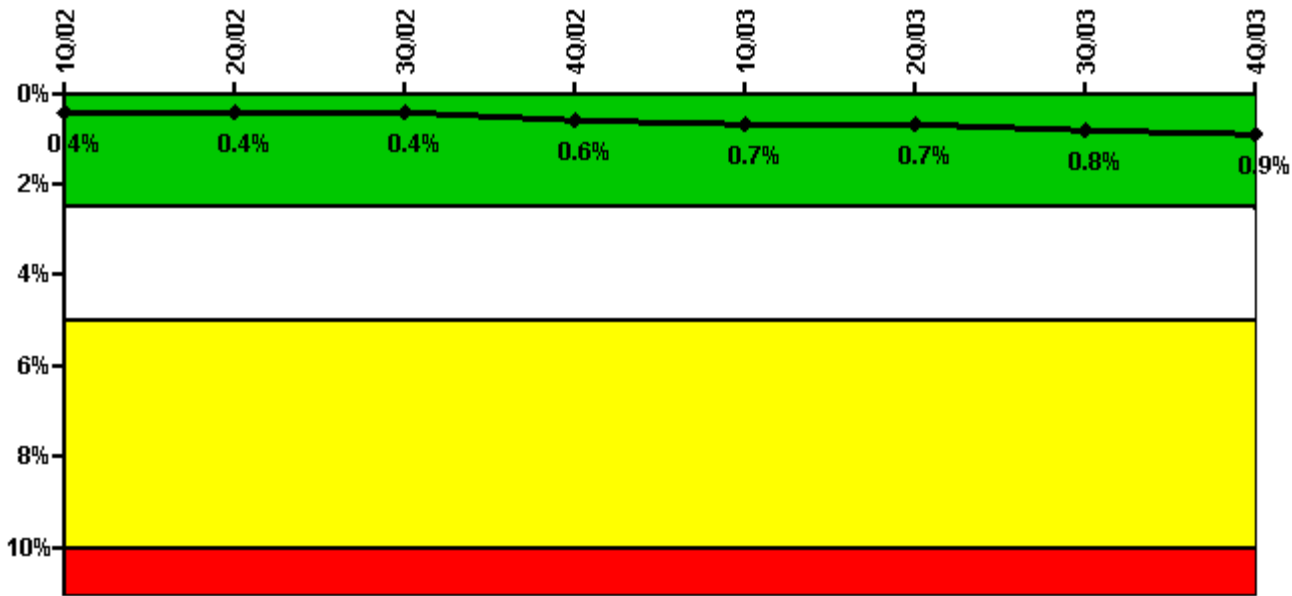
Thresholds: White > 6.0

Notes

Unplanned Power Changes per 7000 Critical Hrs	1Q/02	2Q/02	3Q/02	4Q/02	1Q/03	2Q/03	3Q/03	4Q/03
Unplanned power changes	0	2.0	1.0	0	1.0	0	1.0	0
Critical hours	1261.5	1965.5	2027.5	2209.0	1884.6	824.0	1832.1	2174.5
Indicator value	3.0	5.2	3.9	2.8	3.5	2.0	2.1	2.1

Licensee Comments: none

Safety System Unavailability, Emergency AC Power



Thresholds: White > 2.5% Yellow > 5.0% Red > 10.0%

Notes

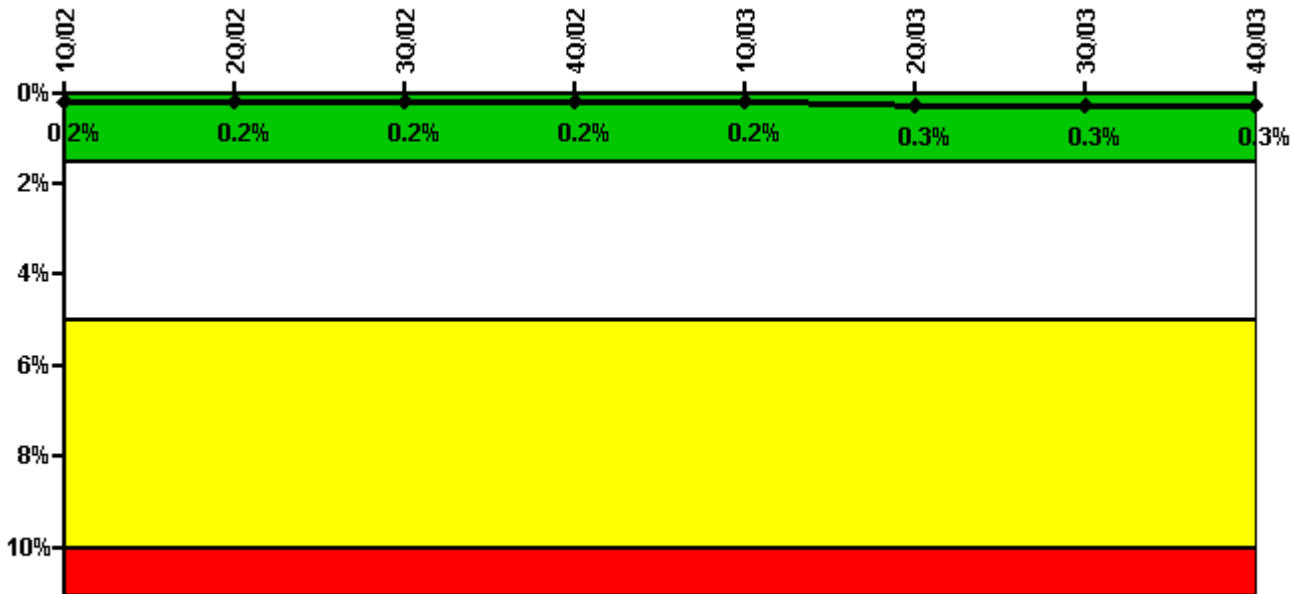
Safety System Unavailability, Emergency AC Power	1Q/02	2Q/02	3Q/02	4Q/02	1Q/03	2Q/03	3Q/03	4Q/03
Train 1								
Planned unavailable hours	5.38	11.33	0.70	0.70	33.52	0.32	21.99	1.14
Unplanned unavailable hours	0	0	0	81.80	49.10	0	8.63	0
Fault exposure hours	0	0	0	0	0	0	0	0
Effective Reset hours	0	0	0	0	0	0	0	0
Required hours	1903.80	2183.00	2208.00	2209.00	2160.00	2185.00	2208.00	2209.00
Train 2								
Planned unavailable hours	0.20	14.60	22.90	6.30	1.18	0.65	9.35	0.78
Unplanned unavailable hours	0	0	0	18.80	0	0	0	102.12
Fault exposure hours	0	0	0	0	0	0	0	0
Effective Reset hours	0	0	0	0	0	0	0	0
Required hours	2064.00	2183.00	2208.00	2209.00	2160.00	1079.77	2208.00	2209.00
Indicator value	0.4%	0.4%	0.4%	0.6%	0.7%	0.7%	0.8%	0.9%

Licensee Comments:

4Q/03: A change report is being submitted to correct the number fault exposure hours report in the 3rd QTR 2003 for the Unit 2 Train 2 AB emergency diesel generator. This change reduces the number of reported fault exposure hours from 2 to 0.

4Q/00: Change made to add planned unavailable hours to train 1EDG to account for CO2 testing. Change made to correct Train 2 AB EDG Fault Exposure Hours to correct typographical error.

Safety System Unavailability, High Pressure Injection System (HPSI)



Thresholds: White > 1.5% Yellow > 5.0% Red > 10.0%

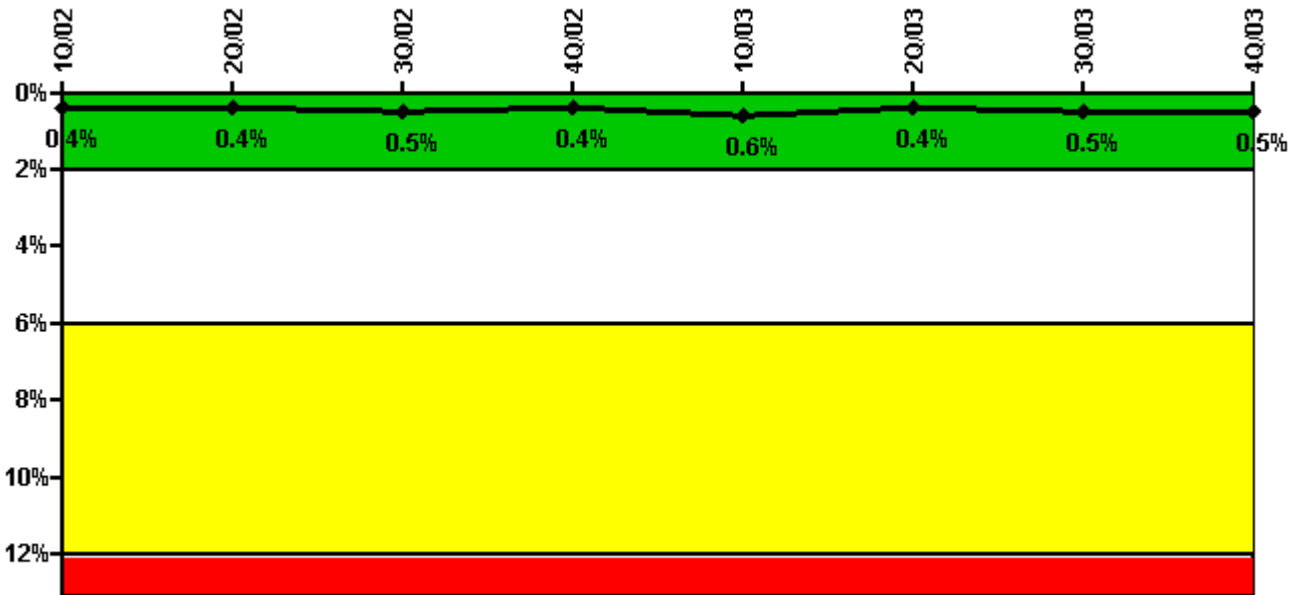
Notes

Safety System Unavailability, High Pressure Injection System (HPSI)	1Q/02	2Q/02	3Q/02	4Q/02	1Q/03	2Q/03	3Q/03	4Q/03
Train 1								
Planned unavailable hours	11.00	0	10.03	0	1.65	3.33	8.58	0
Unplanned unavailable hours	0	0	0	0	0	64.58	0	0
Fault exposure hours	0	0	0	0	0	0	0	0
Effective Reset hours	0	0	0	0	0	0	0	0
Required hours	1389.76	2183.00	2118.98	2209.00	2160.00	927.64	2096.37	2209.00
Train 2								
Planned unavailable hours	1.87	0	11.82	0	1.35	10.97	0	3.53
Unplanned unavailable hours	0	0	0	0	0	0	0	0
Fault exposure hours	0	0	0	0	0	0	0	0
Effective Reset hours	0	0	0	0	0	0	0	0
Required hours	1329.94	2183.00	2208.00	2209.00	2130.15	1007.37	1886.30	2209.00
Train 3								
Planned unavailable hours	0	0	0	23.15	8.57	0	0	0
Unplanned unavailable hours	0	0	0	0	0	0	0	0
Fault exposure hours	0	0	0	0	0	0	0	0
Effective Reset hours	0	0	0	0	0	0	0	0
Required hours	1389.76	2183.00	2118.98	2209.00	2130.15	912.07	1886.30	2209.00

Train 4								
Planned unavailable hours	0	5.95	0	0	1.23	0	9.08	0
Unplanned unavailable hours	0	0	18.77	0	0	0	0	13.42
Fault exposure hours	0	0	0	0	0	0	0	0
Effective Reset hours	0	0	0	0	0	0	0	0
Required hours	1329.94	2183.00	2118.98	2209.00	2130.15	912.07	1886.30	2209.00
Indicator value	0.2%	0.2%	0.2%	0.2%	0.2%	0.3%	0.3%	0.3%

Licensee Comments: none

Safety System Unavailability, Heat Removal System (AFW)



Thresholds: White > 2.0% Yellow > 6.0% Red > 12.0%

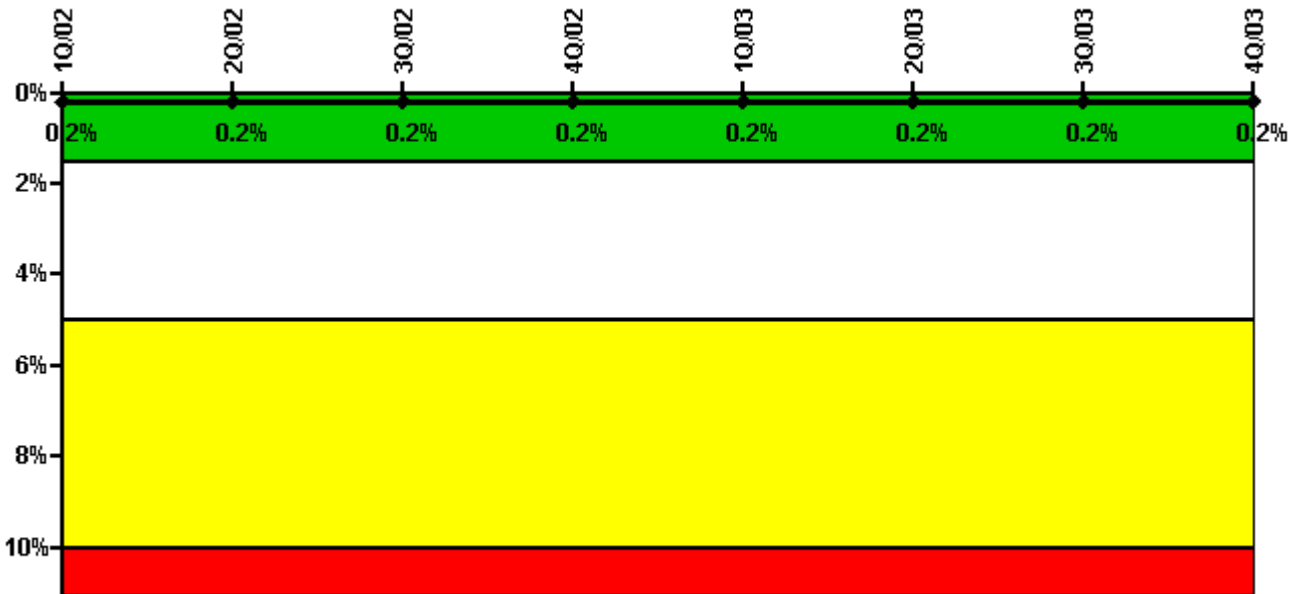
Notes

Safety System Unavailability, Heat Removal System (AFW)	1Q/02	2Q/02	3Q/02	4Q/02	1Q/03	2Q/03	3Q/03	4Q/03
Train 1								
Planned unavailable hours	0	0	6.85	0	36.12	0	6.05	4.62
Unplanned unavailable hours	0	0	27.33	0	0	0	0	0.05
Fault exposure hours	0	0	0	0	0	0	0	0
Effective Reset hours	0	0	0	0	0	0	0	0
Required hours	438.92	2183.00	2118.98	2209.00	2132.20	912.07	1886.30	2209.00
Train 2								
Planned unavailable hours	2.52	9.23	9.05	0	29.38	0	0	0

Unplanned unavailable hours	0	6.08	0	0	59.48	0	0	0.07
Fault exposure hours	0	0	0	0	0	0	0	0
Effective Reset hours	0	0	0	0	0	0	0	0
Required hours	438.92	2183.00	2118.98	2209.00	2131.20	912.07	1886.30	2209.00
Train 3								
Planned unavailable hours	0	0	23.93	0	9.03	0	0	20.90
Unplanned unavailable hours	14.79	0	0	0	0	0	0	0
Fault exposure hours	0	0	0	0	0	0	0	0
Effective Reset hours	0	0	0	0	0	0	0	0
Required hours	438.92	2183.00	2118.98	2209.00	2131.20	912.07	1886.30	2209.00
Indicator value	0.4%	0.4%	0.5%	0.4%	0.6%	0.4%	0.5%	0.5%

Licensee Comments: none

Safety System Unavailability, Residual Heat Removal System



Thresholds: White > 1.5% Yellow > 5.0% Red > 10.0%

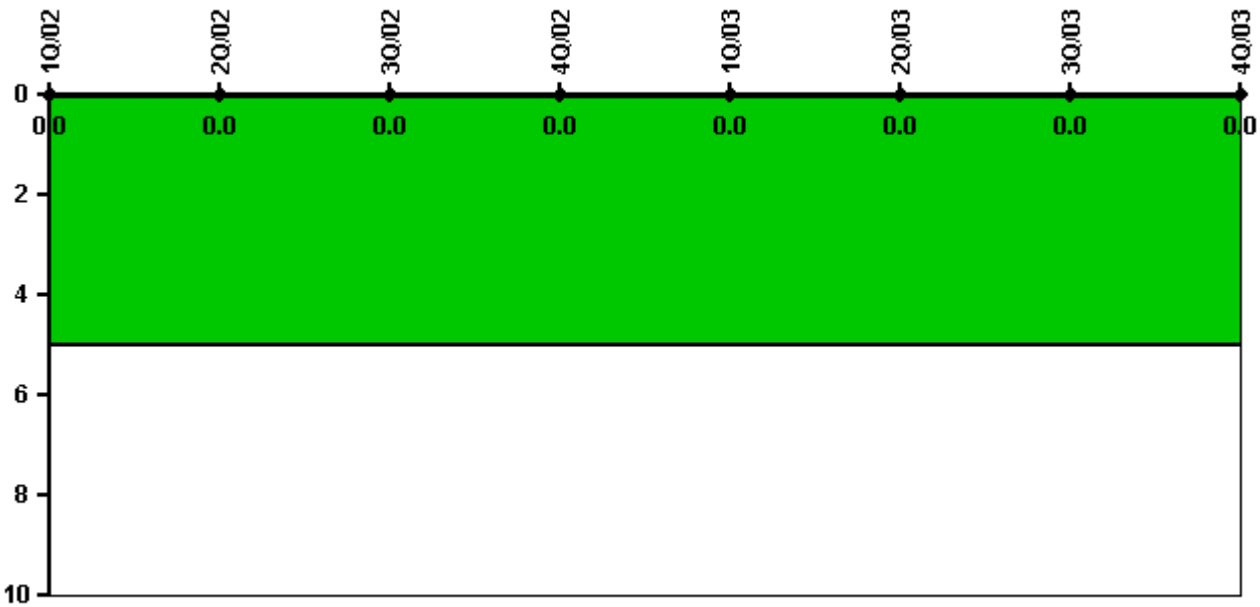
Notes

Safety System Unavailability, Residual Heat Removal System	1Q/02	2Q/02	3Q/02	4Q/02	1Q/03	2Q/03	3Q/03	4Q/03
Train 1								
Planned unavailable hours	15.62	0	8.77	8.05	0	0	0	0
Unplanned unavailable hours	0	0	0	0	0	0	0	0
Fault exposure hours	0	0	0	0	0	0	0	0

Effective Reset hours	0	0	0	0	0	0	0	0
Required hours	1857.00	2183.00	2208.00	2209.00	2160.00	1838.30	2208.00	2209.00
Train 2								
Planned unavailable hours	7.58	0	10.20	6.03	0	0	10.67	14.18
Unplanned unavailable hours	0	0	0	0	0	0	0	17.45
Fault exposure hours	0	0	0	0	0	0	0	0
Effective Reset hours	0	0	0	0	0	0	0	0
Required hours	1857.00	2183.00	2208.00	2209.00	2160.00	1838.30	2208.00	2209.00
Indicator value	0.2%	0.2%	0.2%	0.2%	0.2%	0.2%	0.2%	0.2%

Licensee Comments: none

Safety System Functional Failures (PWR)



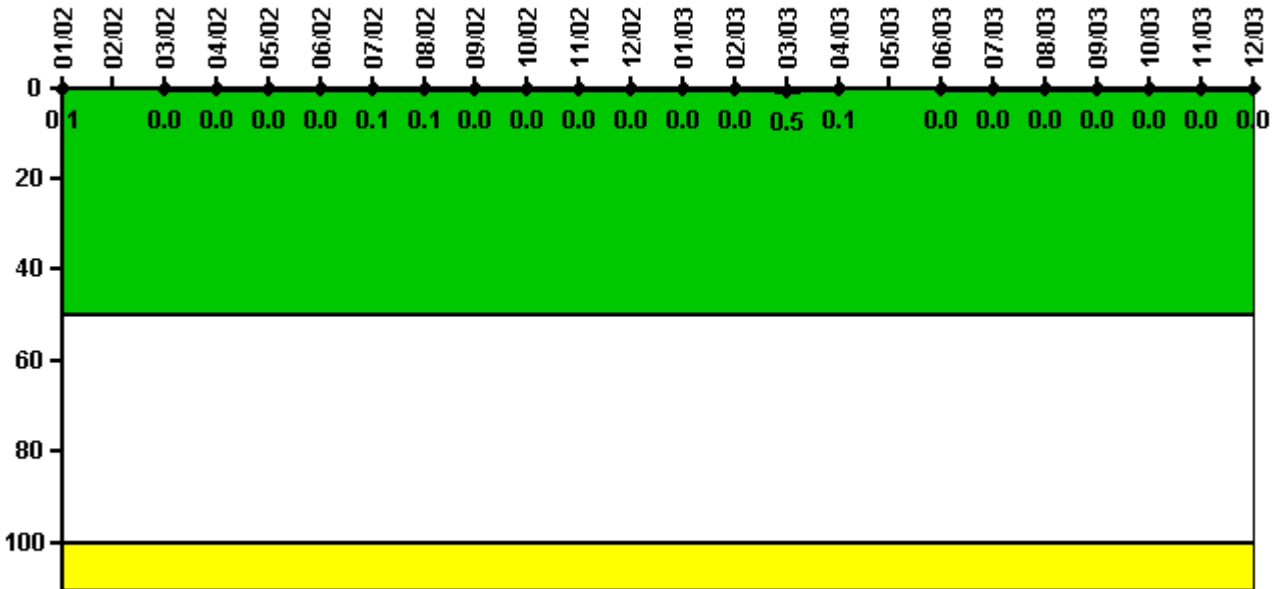
Thresholds: White > 5.0

Notes

Safety System Functional Failures (PWR)	1Q/02	2Q/02	3Q/02	4Q/02	1Q/03	2Q/03	3Q/03	4Q/03
Safety System Functional Failures	0	0	0	0	0	0	0	0
Indicator value	0	0	0	0	0	0	0	0

Licensee Comments: none

Reactor Coolant System Activity



Thresholds: White > 50.0 Yellow > 100.0

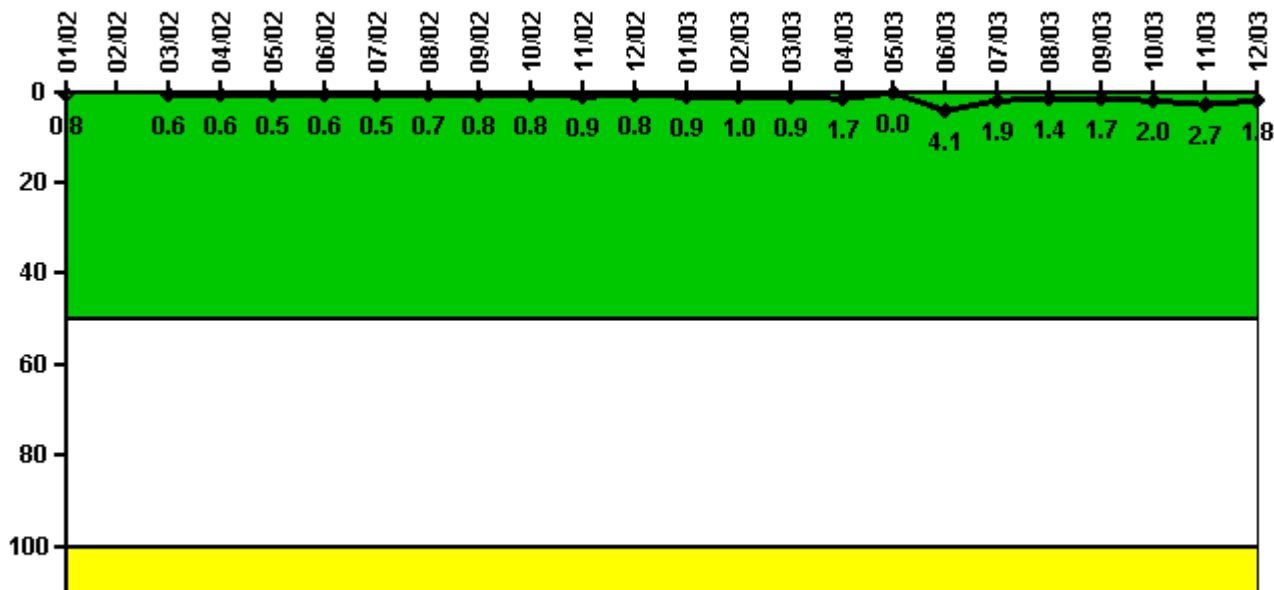
Notes

Reactor Coolant System Activity	1/02	2/02	3/02	4/02	5/02	6/02	7/02	8/02	9/02	10/02	11/02	12/02
Maximum activity	0.000509	N/A	0.000212	0.000242	0.000214	0.000238	0.001100	0.000641	0.000316	0.000359	0.000324	0.000313
Technical specification limit	1.0	1.0	1.0	1.0	1.0	1.0	1.0	1.0	1.0	1.0	1.0	1.0
Indicator value	0.1	N/A	0	0	0	0	0.1	0.1	0	0	0	0

Reactor Coolant System Activity	1/03	2/03	3/03	4/03	5/03	6/03	7/03	8/03	9/03	10/03	11/03	12/03
Maximum activity	0.000313	0.000368	0.004970	0.001070	N/A	0.000159	0.000217	0.000175	0.000188	0.000196	0.000201	0.000215
Technical specification limit	1.0	1.0	1.0	1.0	1.0	1.0	1.0	1.0	1.0	1.0	1.0	1.0
Indicator value	0	0	0.5	0.1	N/A	0	0	0	0	0	0	0

Licensee Comments: none

Reactor Coolant System Leakage



Thresholds: White > 50.0 Yellow > 100.0

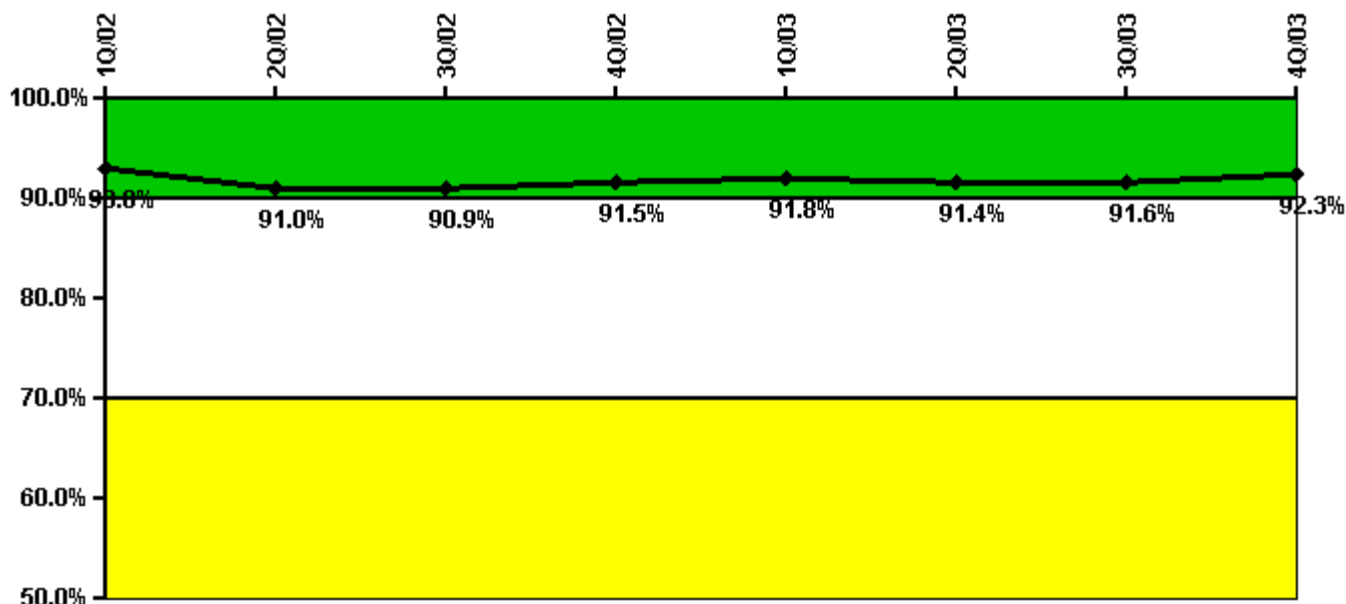
Notes

Reactor Coolant System Leakage	1/02	2/02	3/02	4/02	5/02	6/02	7/02	8/02	9/02	10/02	11/02	12/02
Maximum leakage	0.085	N/A	0.068	0.071	0.057	0.064	0.058	0.080	0.086	0.090	0.100	0.090
Technical specification limit	11.0	11.0	11.0	11.0	11.0	11.0	11.0	11.0	11.0	11.0	11.0	11.0
Indicator value	0.8	N/A	0.6	0.6	0.5	0.6	0.5	0.7	0.8	0.8	0.9	0.8

Reactor Coolant System Leakage	1/03	2/03	3/03	4/03	5/03	6/03	7/03	8/03	9/03	10/03	11/03	12/03
Maximum leakage	0.096	0.110	0.097	0.184	0	0.450	0.211	0.152	0.190	0.220	0.294	0.193
Technical specification limit	11.0	11.0	11.0	11.0	11.0	11.0	11.0	11.0	11.0	11.0	11.0	11.0
Indicator value	0.9	1.0	0.9	1.7	0	4.1	1.9	1.4	1.7	2.0	2.7	1.8

Licensee Comments: none

Drill/Exercise Performance



Thresholds: White < 90.0% Yellow < 70.0%

Notes

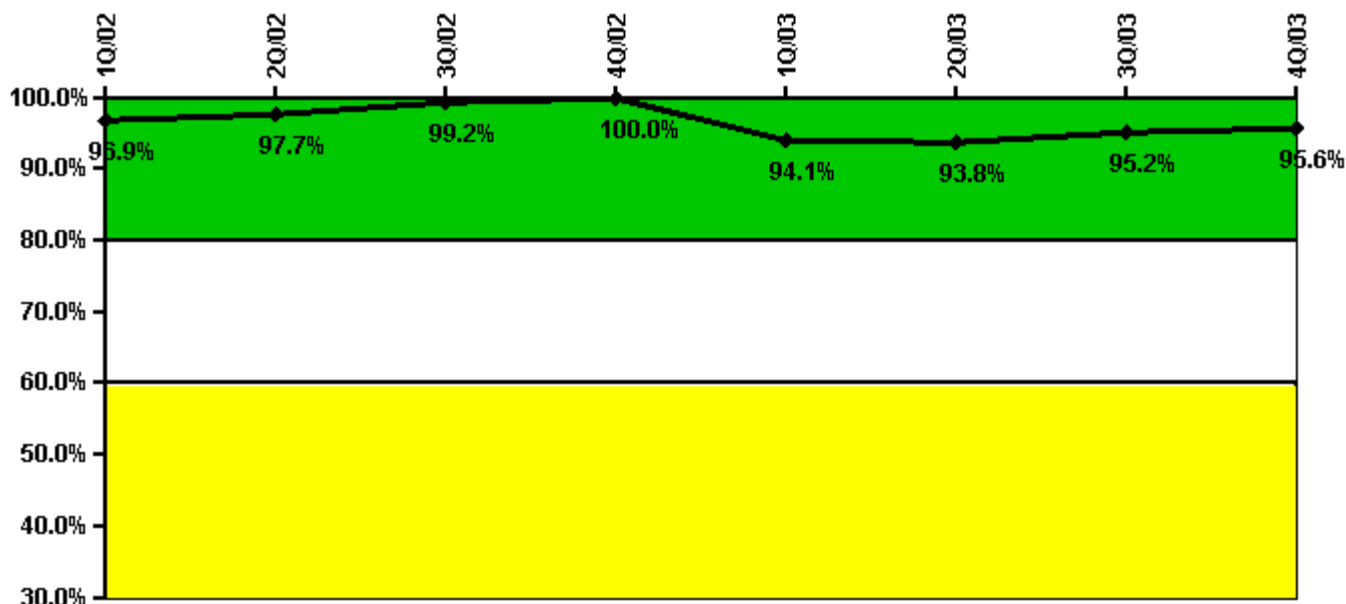
Drill/Exercise Performance	1Q/02	2Q/02	3Q/02	4Q/02	1Q/03	2Q/03	3Q/03	4Q/03
Successful opportunities	43.0	24.0	140.0	149.0	85.0	30.0	176.0	83.0
Total opportunities	46.0	34.0	150.0	159.0	87.0	33.0	192.0	90.0
Indicator value	93.0%	91.0%	90.9%	91.5%	91.8%	91.4%	91.6%	92.3%

Licensee Comments:

2Q/03: The change in the Q2 data reduced the number of drill, exercise, or actual event opportunities reported by 1 and the number successfully completed by 1. This change did not result in a change of color for this performance indicator.

1Q/03: The change in the Q1 data reduced the number of drill, exercise, or actual event opportunities reported by 8 and the number successfully completed by 7. This change did not result in a change of color for this performance indicator.

ERO Drill Participation



Thresholds: White < 80.0% Yellow < 60.0%

Notes

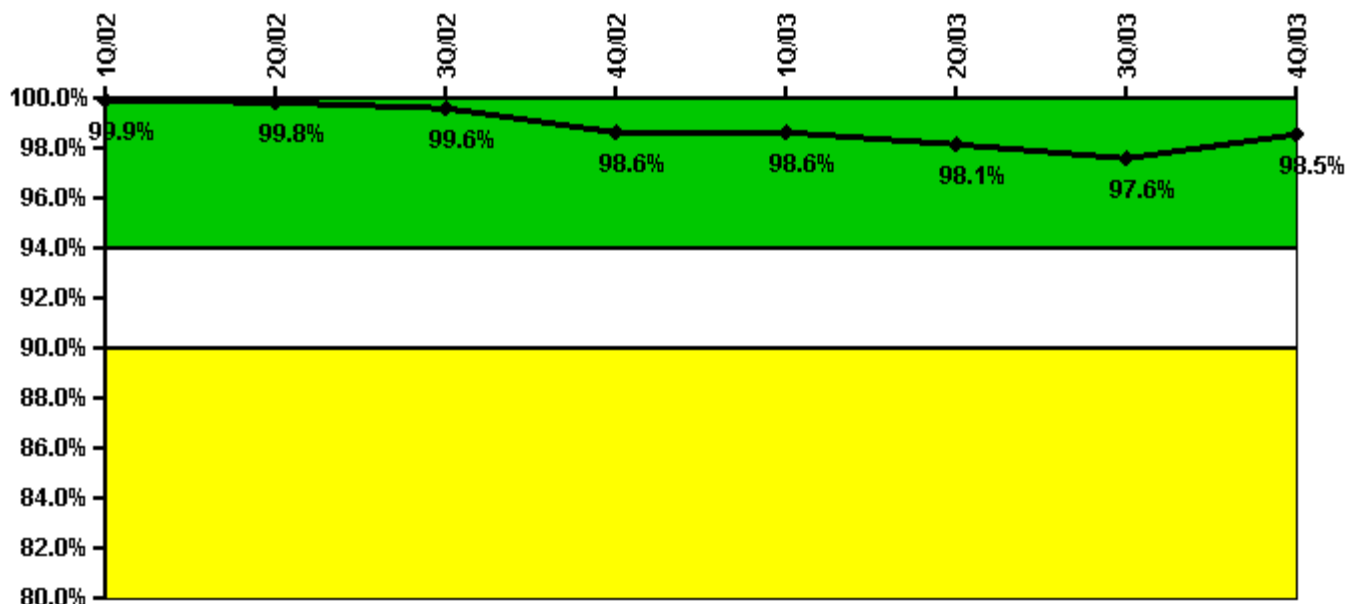
ERO Drill Participation	1Q/02	2Q/02	3Q/02	4Q/02	1Q/03	2Q/03	3Q/03	4Q/03
Participating Key personnel	127.0	125.0	130.0	131.0	143.0	135.0	138.0	129.0
Total Key personnel	131.0	128.0	131.0	131.0	152.0	144.0	145.0	135.0
Indicator value	96.9%	97.7%	99.2%	100.0%	94.1%	93.8%	95.2%	95.6%

Licensee Comments:

2Q/03: The change in the Q2 data reduced the number of key ERO members who participated in a drill, exercise, or actual event by 9. This change did not result in a change of color for this performance indicator.

1Q/03: The change in the Q1 data reduced the number of key ERO members who participated in a drill, exercise, or actual event by 8. This change did not result in a change of color for this performance indicator.

Alert & Notification System



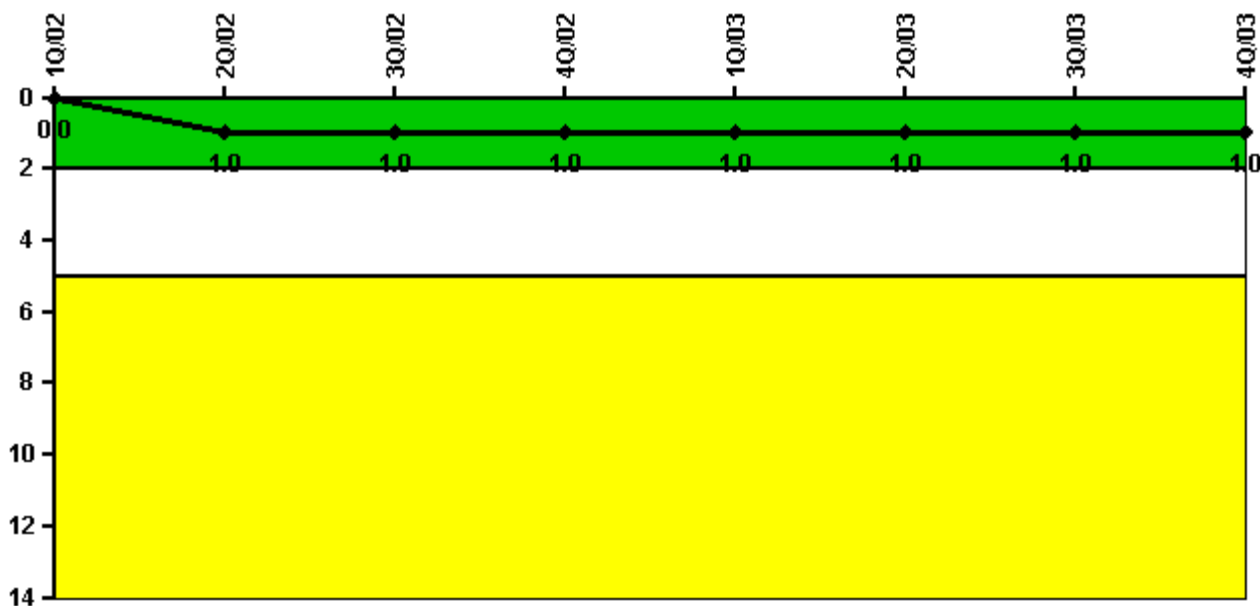
Thresholds: White < 94.0% Yellow < 90.0%

Notes

Alert & Notification System	1Q/02	2Q/02	3Q/02	4Q/02	1Q/03	2Q/03	3Q/03	4Q/03
Successful siren-tests	210	209	209	200	210	205	205	207
Total sirens-tests	210	210	210	210	210	210	210	210
Indicator value	99.9%	99.8%	99.6%	98.6%	98.6%	98.1%	97.6%	98.5%

Licensee Comments: none

Occupational Exposure Control Effectiveness



Thresholds: White > 2.0 Yellow > 5.0

Notes

Occupational Exposure Control Effectiveness	1Q/02	2Q/02	3Q/02	4Q/02	1Q/03	2Q/03	3Q/03	4Q/03
High radiation area occurrences	0	1	0	0	0	0	0	0
Very high radiation area occurrences	0	0	0	0	0	0	0	0
Unintended exposure occurrences	0	0	0	0	0	1	0	0
Indicator value	0	1	1	1	1	1	1	1

Licensee Comments: none

RETS/ODCM Radiological Effluent



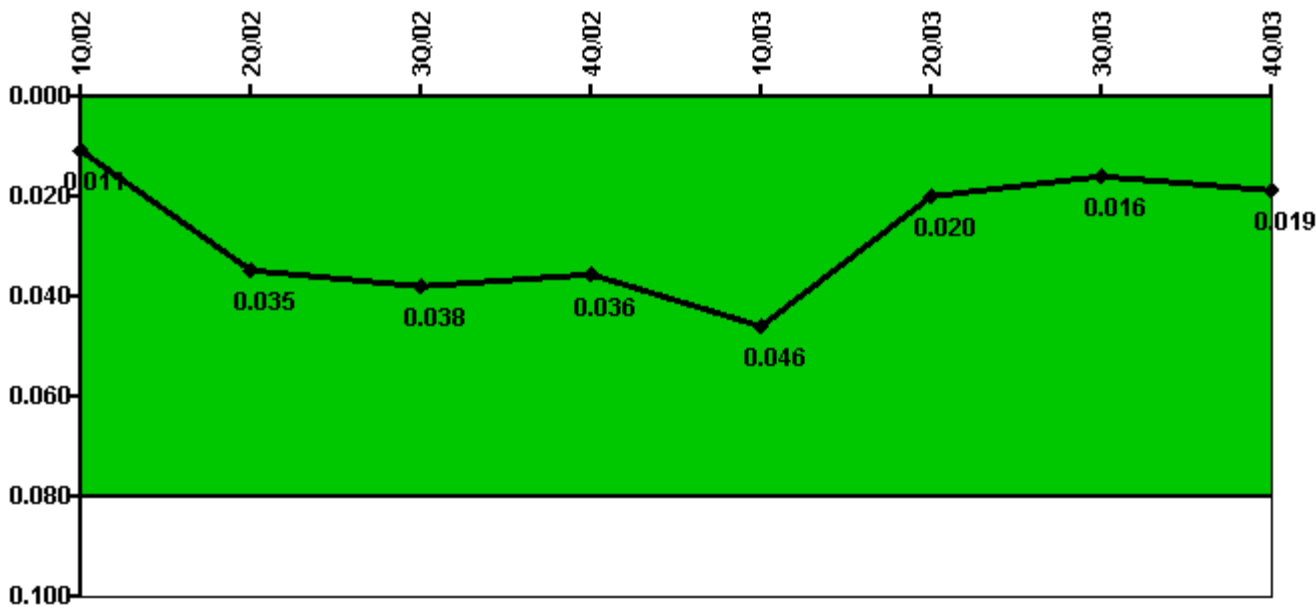
Thresholds: White > 1.0 Yellow > 3.0

Notes

RETS/ODCM Radiological Effluent	1Q/02	2Q/02	3Q/02	4Q/02	1Q/03	2Q/03	3Q/03	4Q/03
RETS/ODCM occurrences	0	0	0	0	0	0	0	0
Indicator value	0	0	0	0	0	0	0	0

Licensee Comments: none

Protected Area Security Performance Index



Thresholds: White > 0.080

Notes

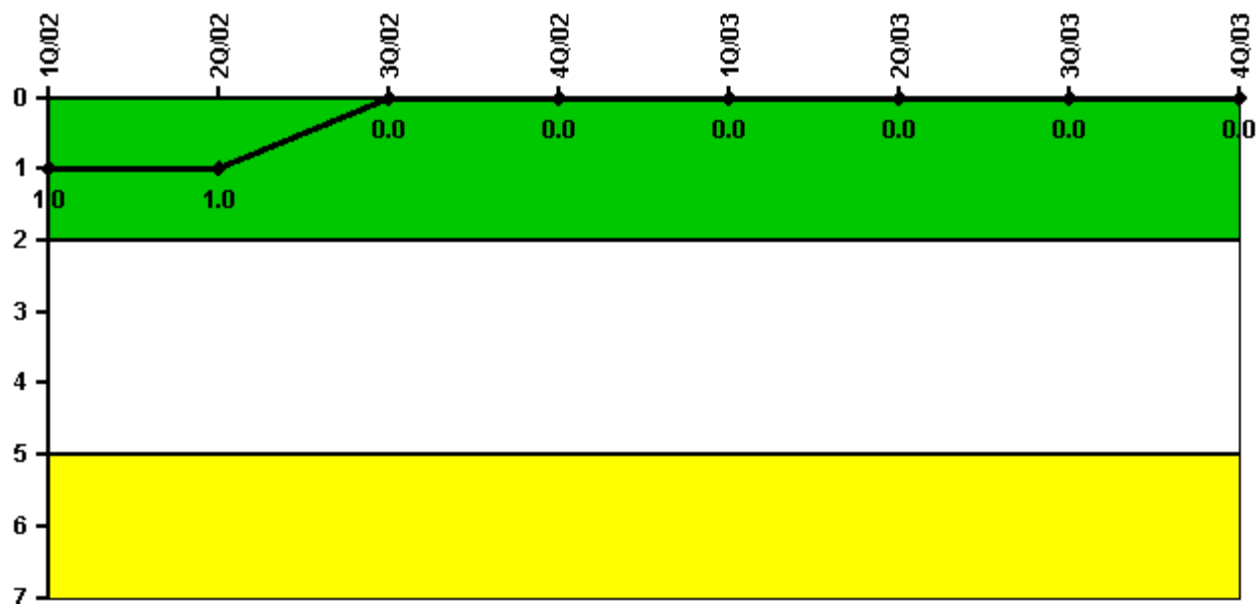
Protected Area Security Performance Index	1Q/02	2Q/02	3Q/02	4Q/02	1Q/03	2Q/03	3Q/03	4Q/03
IDS compensatory hours	28.20	680.50	111.70	52.10	263.40	25.70	25.20	139.90
CCTV compensatory hours	0	0	0	4.4	16.2	0	0	0
IDS normalization factor	1.40	1.40	1.40	1.40	1.40	1.40	1.40	1.40
CCTV normalization factor	1.0	1.0	1.0	1.0	1.0	1.0	1.0	1.0
Index Value	0.011	0.035	0.038	0.036	0.046	0.020	0.016	0.019

Licensee Comments:

4Q/03: In accordance with NEI 99-02, compensatory hours associated with scheduled equipment upgrades that are being performed and those compensatory hours for configuration issues associated with the equipment upgrades are excluded.

3Q/03: In accordance with NEI 99-02, compensatory hours associated with scheduled equipment upgrades that are being performed and those compensatory hours for configuration issues associated with the equipment upgrades are excluded.

Personnel Screening Program



Thresholds: White > 2.0 Yellow > 5.0

Notes

Personnel Screening Program	1Q/02	2Q/02	3Q/02	4Q/02	1Q/03	2Q/03	3Q/03	4Q/03
Program failures	0	0	0	0	0	0	0	0
Indicator value	1	1	0	0	0	0	0	0

Licensee Comments: none

FFD/Personnel Reliability



Thresholds: White > 2.0 Yellow > 5.0

Notes

FFD/Personnel Reliability	1Q/02	2Q/02	3Q/02	4Q/02	1Q/03	2Q/03	3Q/03	4Q/03
Program Failures	0	0	0	0	0	0	0	0
Indicator value	0	0	0	0	0	0	0	0

Licensee Comments: none

▲ [PI Summary](#) | [Inspection Findings Summary](#) | [Reactor Oversight Process](#)

Last Modified: January 23, 2004