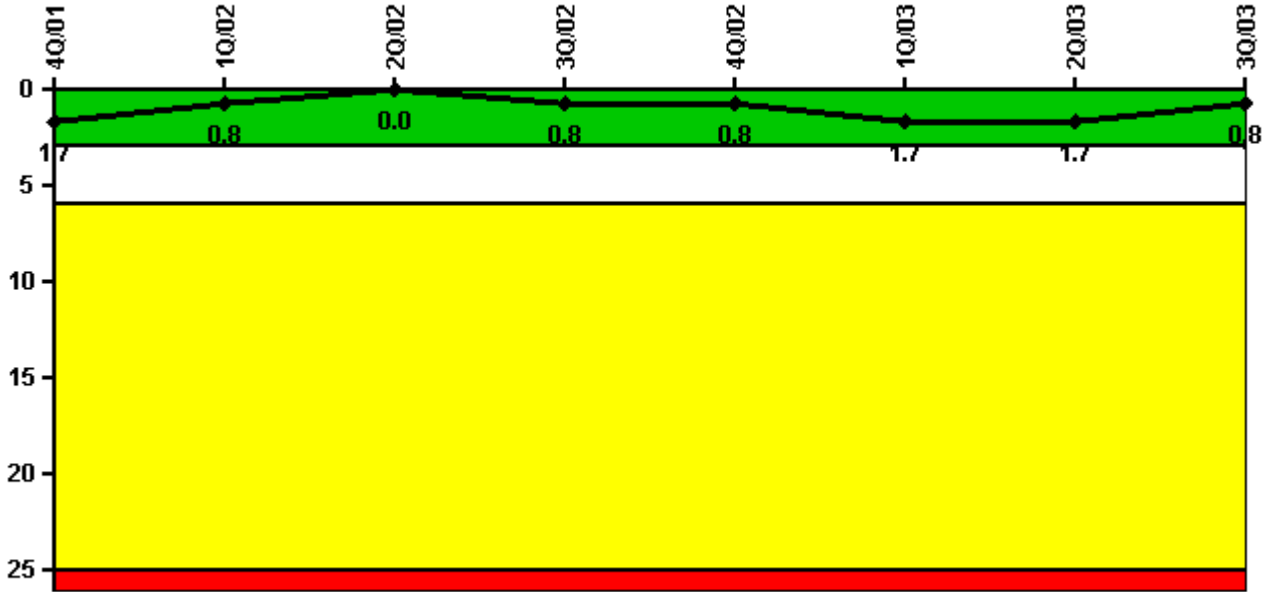


Limerick 2

3Q/2003 Performance Indicators

Licensee's General Comments: none

Unplanned Scrams per 7000 Critical Hrs



Thresholds: White > 3.0 Yellow > 6.0 Red > 25.0

Notes

Unplanned Scrams per 7000 Critical Hrs	4Q/01	1Q/02	2Q/02	3Q/02	4Q/02	1Q/03	2Q/03	3Q/03
Unplanned scrams	0	0	0	1.0	0	1.0	0	0
Critical hours	2209.0	2160.0	2183.0	2142.5	2209.0	1722.6	2183.0	2208.0
Indicator value	1.7	0.8	0	0.8	0.8	1.7	1.7	0.8

Licensee Comments: none

Scrams with Loss of Normal Heat Removal



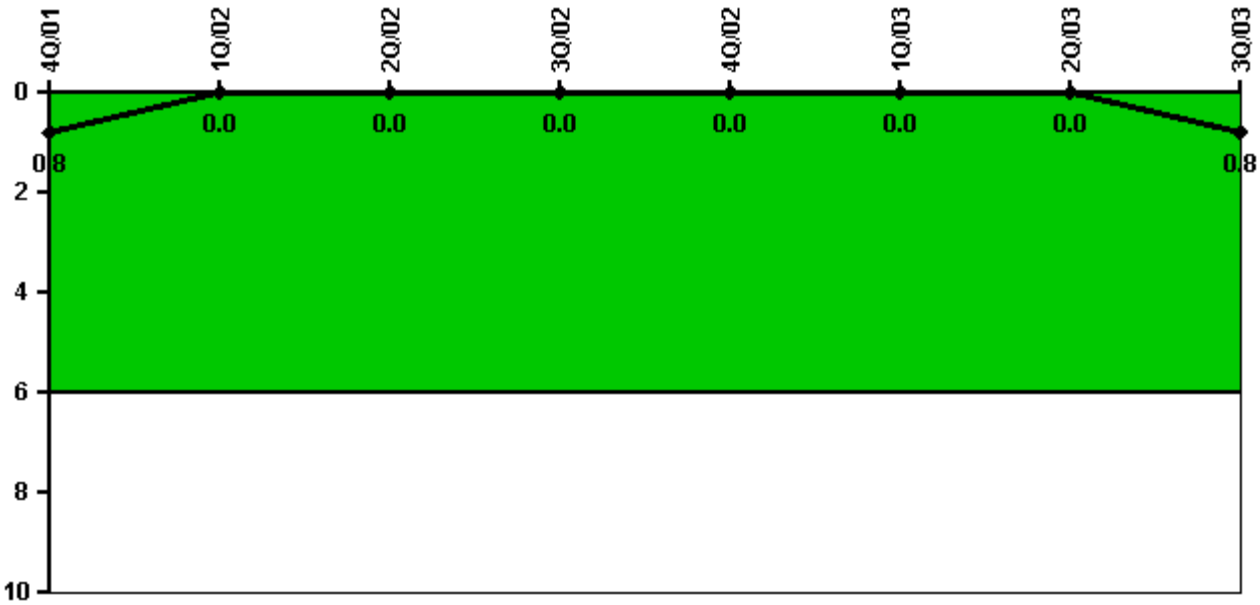
Thresholds: White > 2.0 Yellow > 10.0 Red > 20.0

Notes

Scrams with Loss of Normal Heat Removal	4Q/01	1Q/02	2Q/02	3Q/02	4Q/02	1Q/03	2Q/03	3Q/03
Scrams	0	0	0	0	0	0	0	0
Indicator value	0	0	0	0	0	0	0	0

Licensee Comments: none

Unplanned Power Changes per 7000 Critical Hrs



Thresholds: White > 6.0

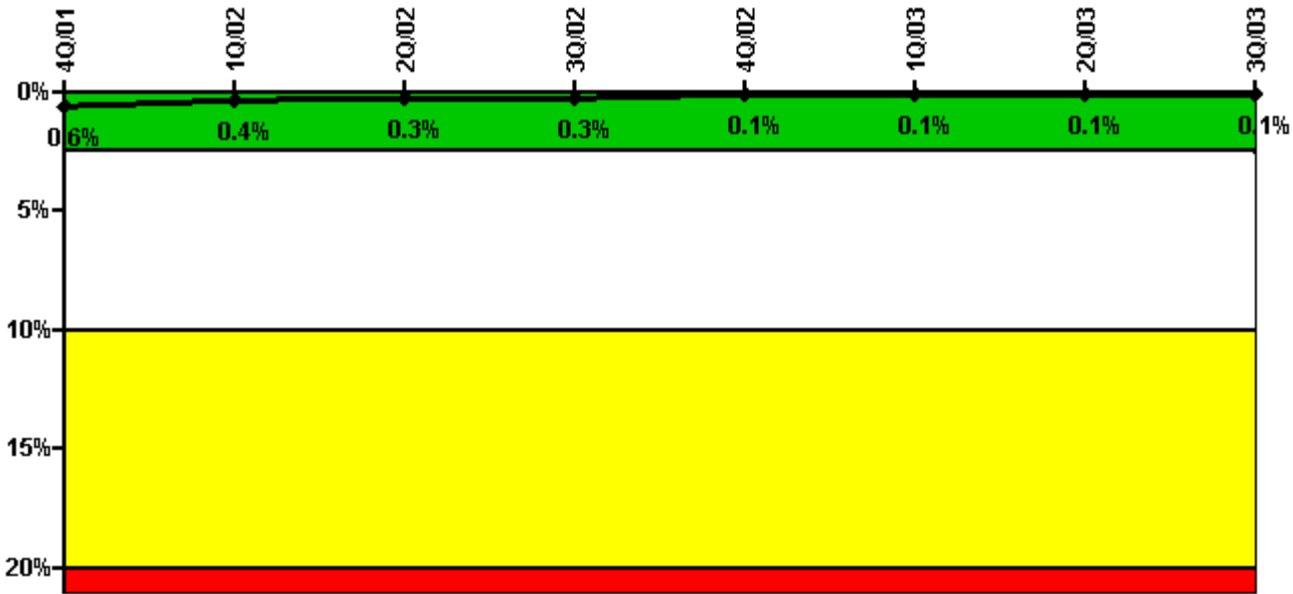
Notes

Unplanned Power Changes per 7000 Critical Hrs	4Q/01	1Q/02	2Q/02	3Q/02	4Q/02	1Q/03	2Q/03	3Q/03
Unplanned power changes	0	0	0	0	0	0	0	1.0
Critical hours	2209.0	2160.0	2183.0	2142.5	2209.0	1722.6	2183.0	2208.0
Indicator value	0.8	0	0	0	0	0	0	0.8

Licensee Comments:

1Q/03: A FAQ is under review by the NEI working group for a greater than 20% power change that occurred in February 2003 on Unit 2, due to a severe snowstorm which resulted in damming the make-up water source. An assessment was conducted that resulted in high confidence that the event should not be counted. The FAQ was submitted based on NEI 99-02 guidance that each case is different and should be evaluated. Furthermore, no impact to the PI color would have or will occur, even if the event is counted.

Safety System Unavailability, Emergency AC Power, >2EDG



Thresholds: White > 2.5% Yellow > 10.0% Red > 20.0%

Notes

Safety System Unavailability, Emergency AC Power, >2EDG	4Q/01	1Q/02	2Q/02	3Q/02	4Q/02	1Q/03	2Q/03	3Q/03
Train 1								
Planned unavailable hours	1.35	0	0	0	0	0	1.68	0
Unplanned unavailable hours	0	0	0	0	0	0	0	0
Fault exposure hours	0	0	0	0	0	0	0	0
Effective Reset hours	0	0	0	0	0	0	0	0
Required hours	2209.00	2160.00	2183.00	2191.91	2209.00	1951.30	2183.00	2208.00
Train 2								
Planned unavailable hours	0	35.08	0.43	0	0	6.31	2.65	1.12
Unplanned unavailable hours	0	0	0	0	0	7.35	2.85	0
Fault exposure hours	0	0	0	0	0	0	0	0
Effective Reset hours	0	0	0	0	0	0	0	0
Required hours	2209.00	2160.00	2183.00	2191.91	2209.00	1951.30	2183.00	2208.00
Train 3								
Planned unavailable hours	0.74	0	0.33	0	0	0	0.32	0.62
Unplanned unavailable hours	0	0	0	0	0	0	0	0
Fault exposure hours	0	0	0	0	0	0	0	0
Effective Reset hours	0	0	0	0	0	0	0	0
Required hours	2209.00	2160.00	2183.00	2191.91	2209.00	1951.30	2183.00	2208.00
Train 4								
Planned unavailable hours	0	35.08	0	0	0	6.65	1.12	0.90
Unplanned unavailable hours	0	0	0	0	0	0	0	0
Fault exposure hours	0	0	0	0	0	0	0	0
Effective Reset hours	0	0	0	0	0	0	0	0
Required hours	2209.00	2160.00	2183.00	2191.91	2209.00	1951.30	2183.00	2208.00

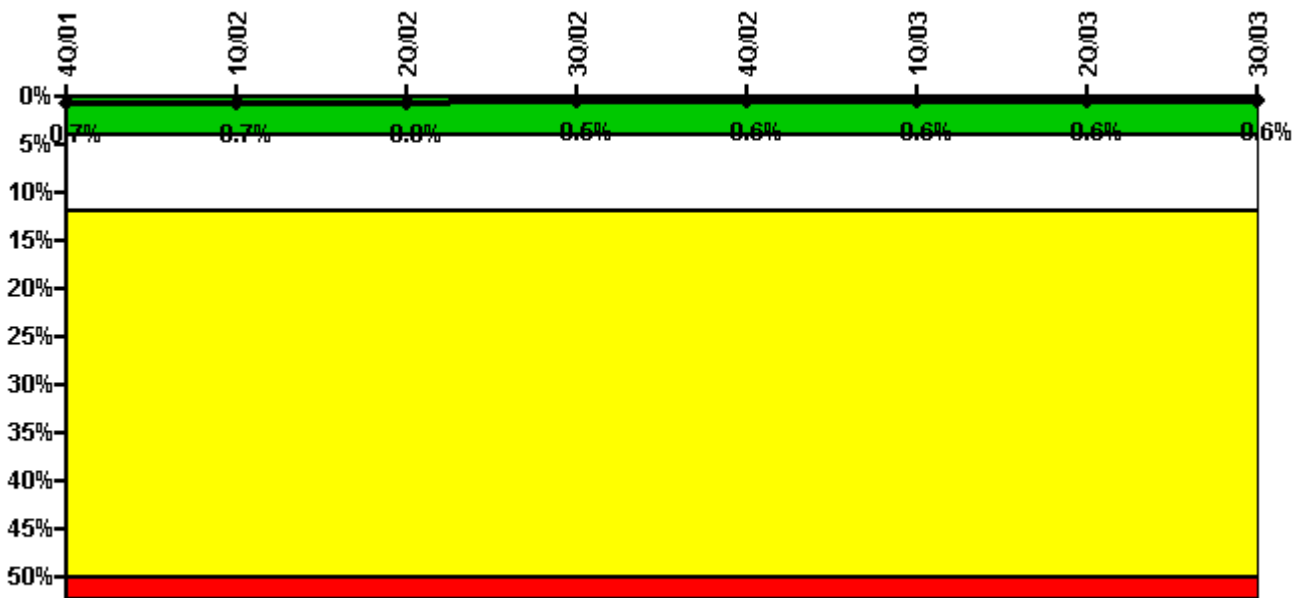
Indicator value	0.6%	0.4%	0.3%	0.3%	0.1%	0.1%	0.1%	0.1%

Licensee Comments:

3Q/03: Unavailability associated with the performance of the Undervoltage Relay Test, RT-2-092-32(1-4)-2, is currently under review for the historical data. All 3 months in this quarter have been updated to reflect any unavailability associated with performance of these tests during the quarter.

2Q/03: The original submittal did not take into account daylight savings time when calculating hours train required to be available for service. No impact to unavailability on train or unit level. PI region and color unchanged. April 2003 only affected month.

Safety System Unavailability, High Pressure Injection System (HPCI)



Thresholds: White > 4.0% Yellow > 12.0% Red > 50.0%

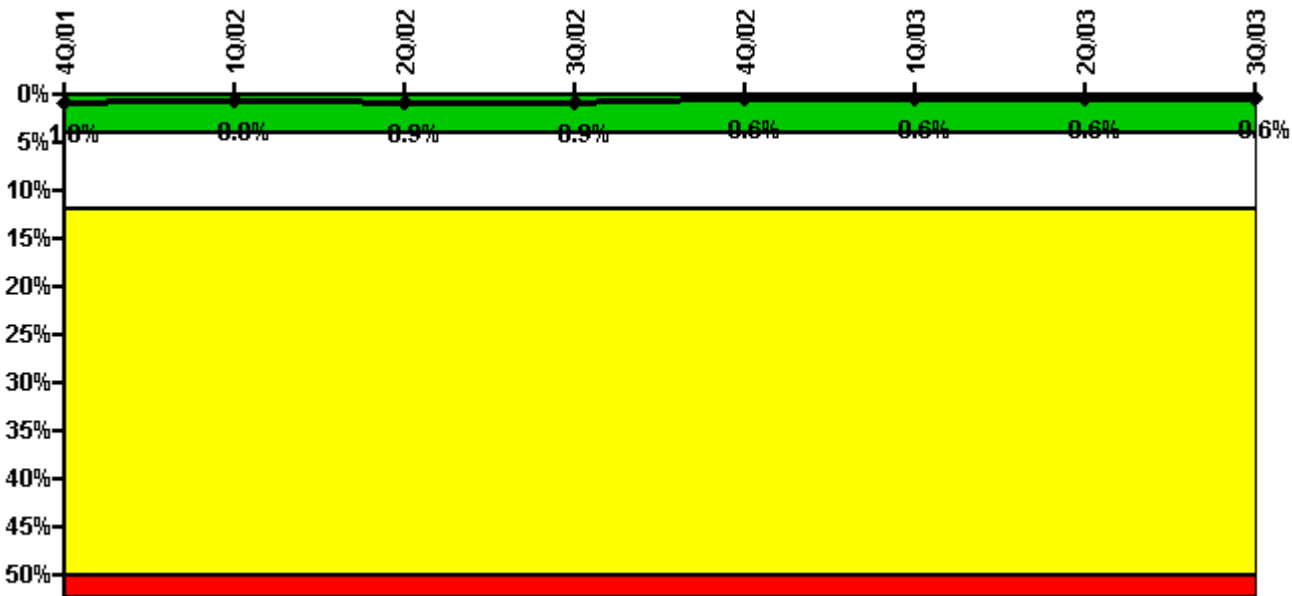
Notes

Safety System Unavailability, High Pressure Injection System (HPCI)	4Q/01	1Q/02	2Q/02	3Q/02	4Q/02	1Q/03	2Q/03	3Q/03
Train 1								
Planned unavailable hours	13.90	2.90	42.60	3.70	25.30	2.00	15.50	0.30
Unplanned unavailable hours	0	0	0	0	0	0	0	0
Fault exposure hours	0	0	0	0	0	0	0	0
Effective Reset hours	0	0	0	0	0	0	0	0
Required hours	2209.00	2160.00	2183.00	2142.50	2209.00	1722.60	2183.00	2208.00

Indicator value	0.7%	0.7%	0.8%	0.5%	0.6%	0.6%	0.6%	0.6%
-----------------	------	------	------	------	------	------	------	------

Licensee Comments: none

Safety System Unavailability, Heat Removal System (RCIC)



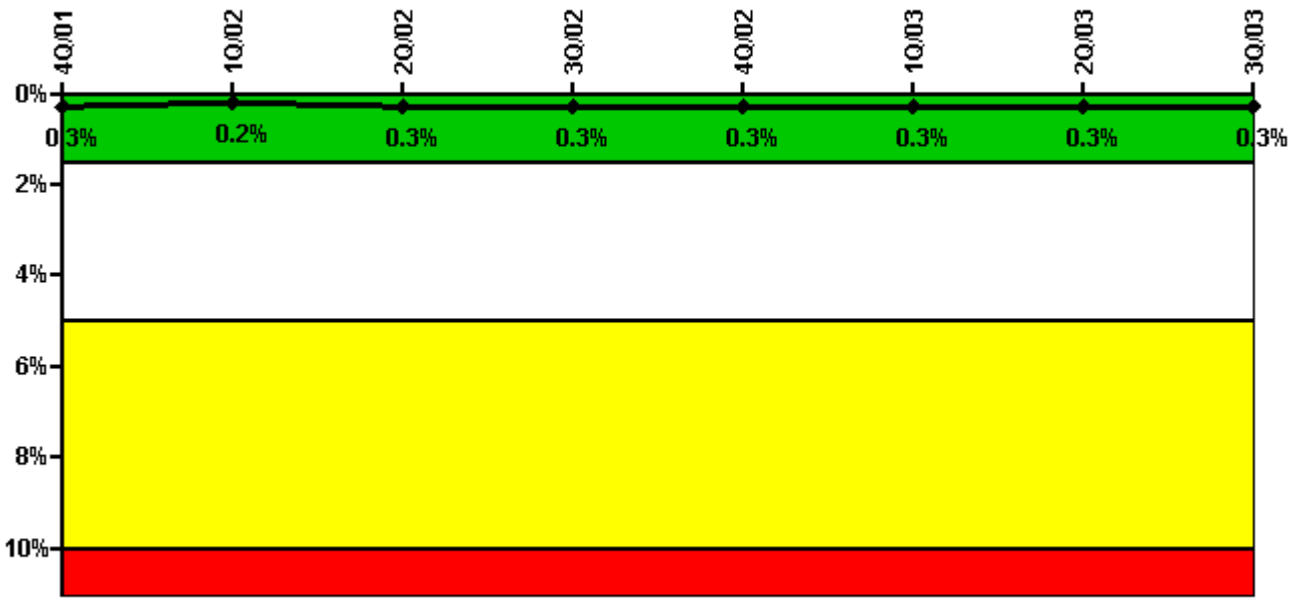
Thresholds: White > 4.0% Yellow > 12.0% Red > 50.0%

Notes

Safety System Unavailability, Heat Removal System (RCIC)	4Q/01	1Q/02	2Q/02	3Q/02	4Q/02	1Q/03	2Q/03	3Q/03
Train 1								
Planned unavailable hours	4.50	2.60	33.80	4.20	0.90	8.10	2.30	26.20
Unplanned unavailable hours	0	0	0	0.80	0	0	0	0
Fault exposure hours	0	0	0	0	0	0	0	0
Effective Reset hours	0	0	0	0	0	0	0	0
Required hours	2209.00	2160.00	2183.00	2142.50	2209.00	1722.60	2183.00	2208.00
Indicator value	1.0%	0.8%	0.9%	0.9%	0.6%	0.6%	0.6%	0.6%

Licensee Comments: none

Safety System Unavailability, Residual Heat Removal System



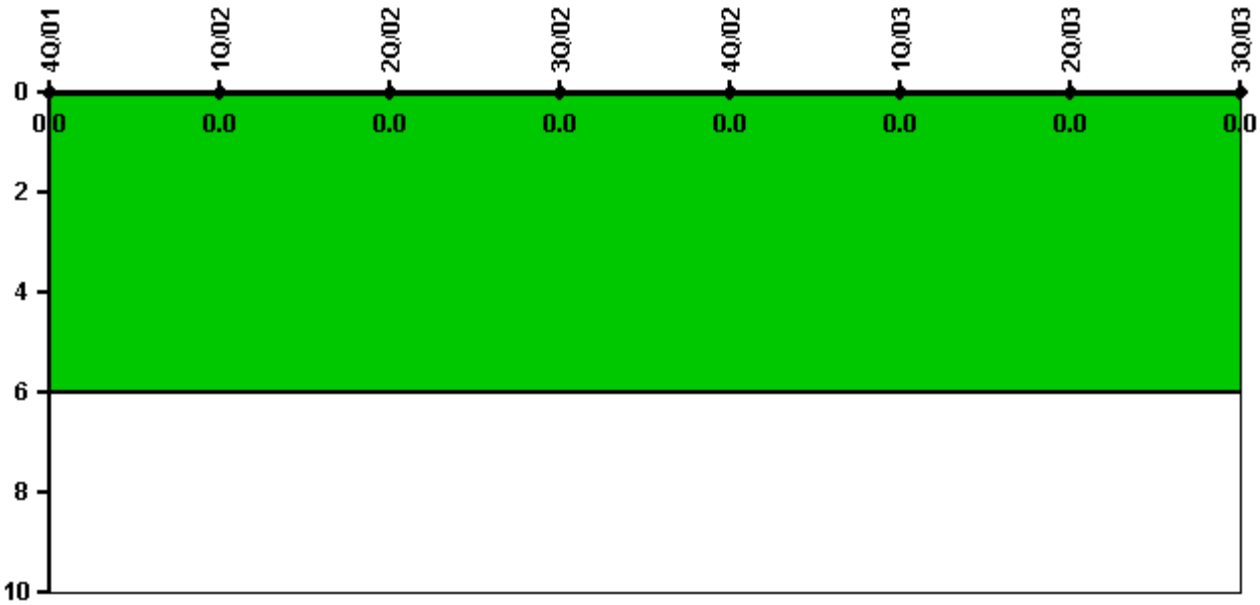
Thresholds: White > 1.5% Yellow > 5.0% Red > 10.0%

Notes

Safety System Unavailability, Residual Heat Removal System	4Q/01	1Q/02	2Q/02	3Q/02	4Q/02	1Q/03	2Q/03	3Q/03
Train 1								
Planned unavailable hours	10.40	2.06	0	0	24.78	2.87	0	2.18
Unplanned unavailable hours	0	0	0	0	0	0	0	0
Fault exposure hours	0	0	0	0	0	0	0	0
Effective Reset hours	0	0	0	0	0	0	0	0
Required hours	2209.00	2160.00	2183.00	2208.00	2209.00	2160.00	2183.00	2208.00
Train 2								
Planned unavailable hours	0	3.72	23.83	0	0.46	6.30	17.00	0
Unplanned unavailable hours	0	4.80	0	0	0	0	0	0
Fault exposure hours	0	0	0	0	0	0	0	0
Effective Reset hours	0	0	0	0	0	0	0	0
Required hours	2209.00	2160.00	2183.00	2208.00	2209.00	2160.00	2183.00	2208.00
Indicator value	0.3%	0.2%	0.3%	0.3%	0.3%	0.3%	0.3%	0.3%

Licensee Comments: none

Safety System Functional Failures (BWR)



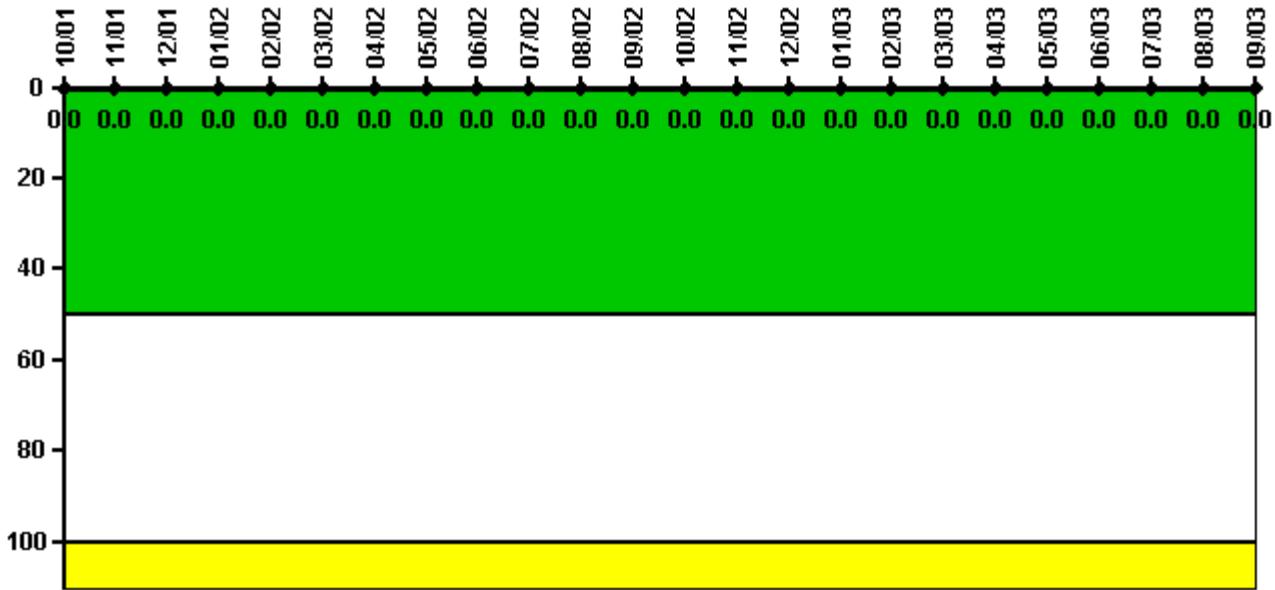
Thresholds: White > 6.0

Notes

Safety System Functional Failures (BWR)	4Q/01	1Q/02	2Q/02	3Q/02	4Q/02	1Q/03	2Q/03	3Q/03
Safety System Functional Failures	0	0	0	0	0	0	0	0
Indicator value	0	0	0	0	0	0	0	0

Licensee Comments: none

Reactor Coolant System Activity



Thresholds: White > 50.0 Yellow > 100.0

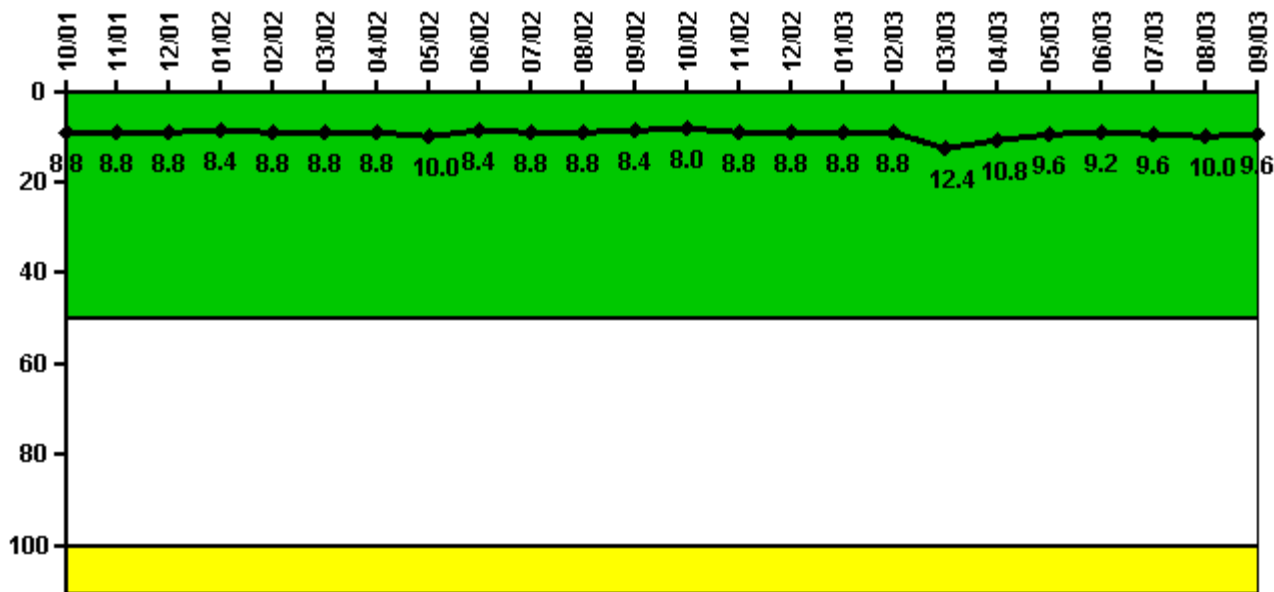
Notes

Reactor Coolant System Activity	10/01	11/01	12/01	1/02	2/02	3/02	4/02	5/02	6/02	7/02	8/02	9/02
Maximum activity	0.000020	0.000018	0.000012	0.000018	0.000019	0.000016	0.000014	0.000024	0.000023	0.000023	0.000014	0.000037
Technical specification limit	0.2	0.2	0.2	0.2	0.2	0.2	0.2	0.2	0.2	0.2	0.2	0.2
Indicator value	0	0	0	0	0	0	0	0	0	0	0	0

Reactor Coolant System Activity	10/02	11/02	12/02	1/03	2/03	3/03	4/03	5/03	6/03	7/03	8/03	9/03
Maximum activity	0.000022	0.000021	0.000013	0.000015	0.000028	0.000020	0.000009	0.000013	0.000010	0.000009	0.000013	0.000012
Technical specification limit	0.2	0.2	0.2	0.2	0.2	0.2	0.2	0.2	0.2	0.2	0.2	0.2
Indicator value	0	0	0	0	0	0	0	0	0	0	0	0

Licensee Comments: none

Reactor Coolant System Leakage



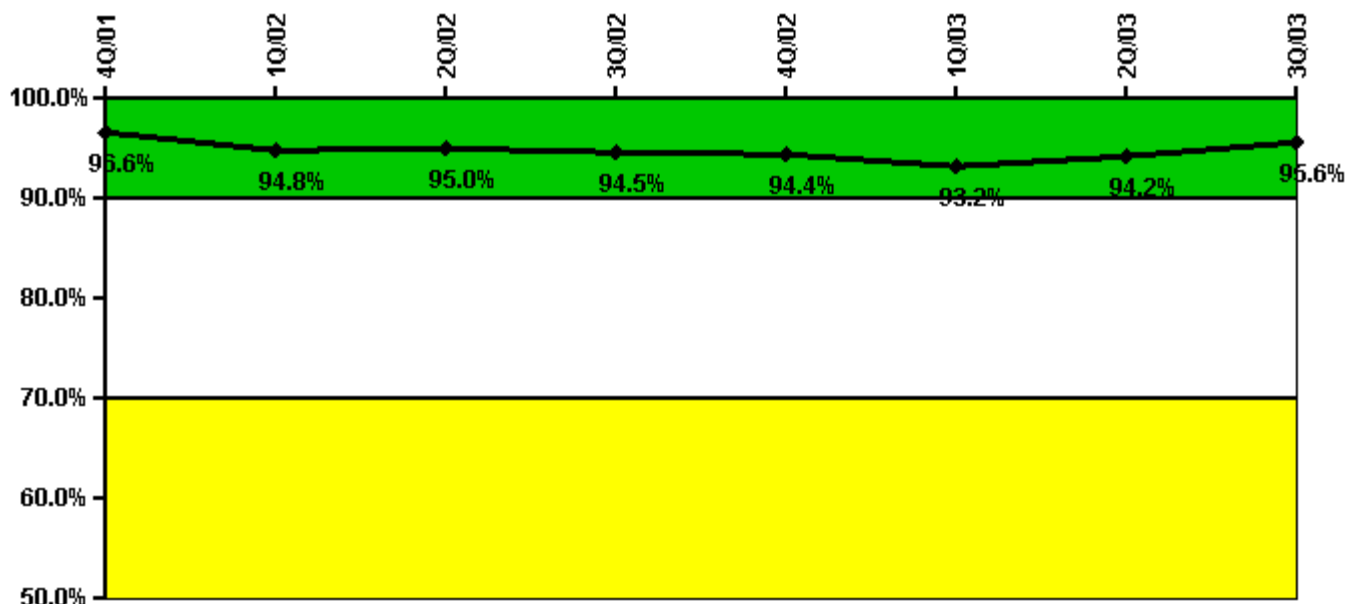
Thresholds: White > 50.0 Yellow > 100.0

Notes

Reactor Coolant System Leakage	10/01	11/01	12/01	1/02	2/02	3/02	4/02	5/02	6/02	7/02	8/02	9/02
Maximum leakage	2.200	2.200	2.200	2.100	2.200	2.200	2.200	2.500	2.100	2.200	2.200	2.100
Technical specification limit	25.0	25.0	25.0	25.0	25.0	25.0	25.0	25.0	25.0	25.0	25.0	25.0
Indicator value	8.8	8.8	8.8	8.4	8.8	8.8	8.8	10.0	8.4	8.8	8.8	8.4
Reactor Coolant System Leakage	10/02	11/02	12/02	1/03	2/03	3/03	4/03	5/03	6/03	7/03	8/03	9/03
Maximum leakage	2.000	2.200	2.200	2.200	2.200	3.100	2.700	2.400	2.300	2.400	2.500	2.400
Technical specification limit	25.0	25.0	25.0	25.0	25.0	25.0	25.0	25.0	25.0	25.0	25.0	25.0
Indicator value	8.0	8.8	8.8	8.8	8.8	12.4	10.8	9.6	9.2	9.6	10.0	9.6

Licensee Comments: none

Drill/Exercise Performance



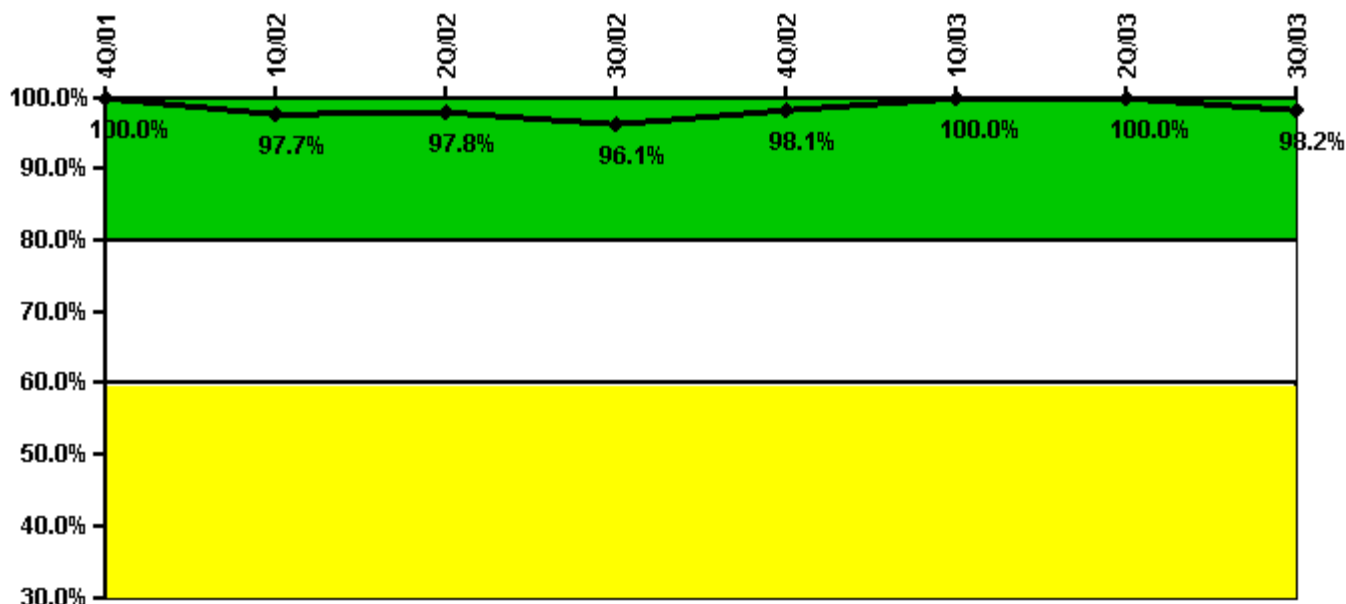
Thresholds: White < 90.0% Yellow < 70.0%

Notes

Drill/Exercise Performance	4Q/01	1Q/02	2Q/02	3Q/02	4Q/02	1Q/03	2Q/03	3Q/03
Successful opportunities	6.0	16.0	32.0	5.0	15.0	11.0	36.0	8.0
Total opportunities	6.0	16.0	34.0	6.0	15.0	12.0	38.0	8.0
Indicator value	96.6%	94.8%	95.0%	94.5%	94.4%	93.2%	94.2%	95.6%

Licensee Comments: none

ERO Drill Participation



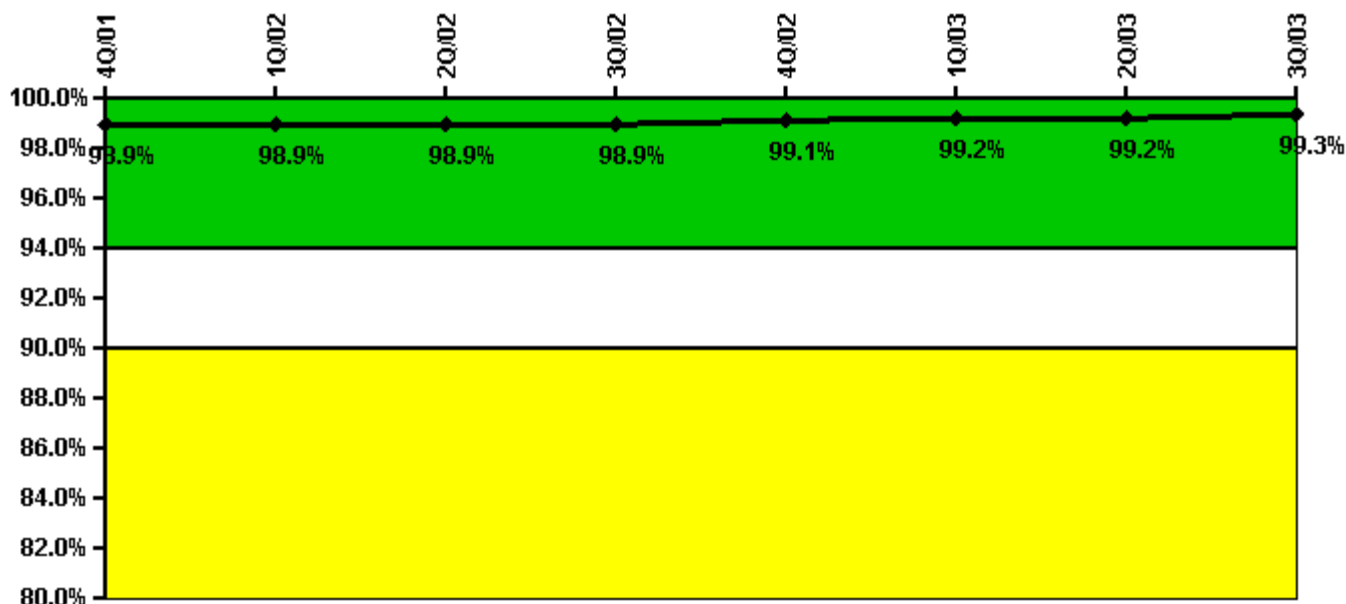
Thresholds: White < 80.0% Yellow < 60.0%

Notes

ERO Drill Participation	4Q/01	1Q/02	2Q/02	3Q/02	4Q/02	1Q/03	2Q/03	3Q/03
Participating Key personnel	45.0	43.0	44.0	49.0	52.0	53.0	54.0	55.0
Total Key personnel	45.0	44.0	45.0	51.0	53.0	53.0	54.0	56.0
Indicator value	100.0%	97.7%	97.8%	96.1%	98.1%	100.0%	100.0%	98.2%

Licensee Comments: none

Alert & Notification System



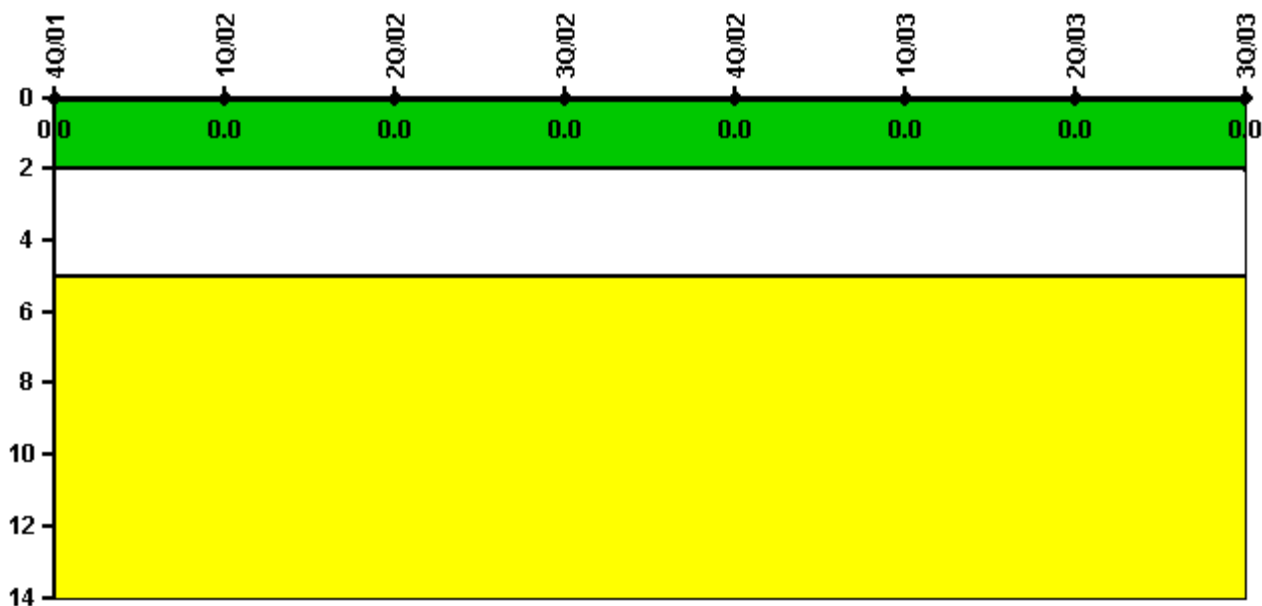
Thresholds: White < 94.0% Yellow < 90.0%

Notes

Alert & Notification System	4Q/01	1Q/02	2Q/02	3Q/02	4Q/02	1Q/03	2Q/03	3Q/03
Successful siren-tests	2119	2122	2124	2121	2298	2133	2126	2129
Total sirens-tests	2145	2145	2145	2145	2310	2145	2145	2145
Indicator value	98.9%	98.9%	98.9%	98.9%	99.1%	99.2%	99.2%	99.3%

Licensee Comments: none

Occupational Exposure Control Effectiveness



Thresholds: White > 2.0 Yellow > 5.0

Notes

Occupational Exposure Control Effectiveness	4Q/01	1Q/02	2Q/02	3Q/02	4Q/02	1Q/03	2Q/03	3Q/03
High radiation area occurrences	0	0	0	0	0	0	0	0
Very high radiation area occurrences	0	0	0	0	0	0	0	0
Unintended exposure occurrences	0	0	0	0	0	0	0	0
Indicator value	0	0	0	0	0	0	0	0

Licensee Comments: none

RETS/ODCM Radiological Effluent



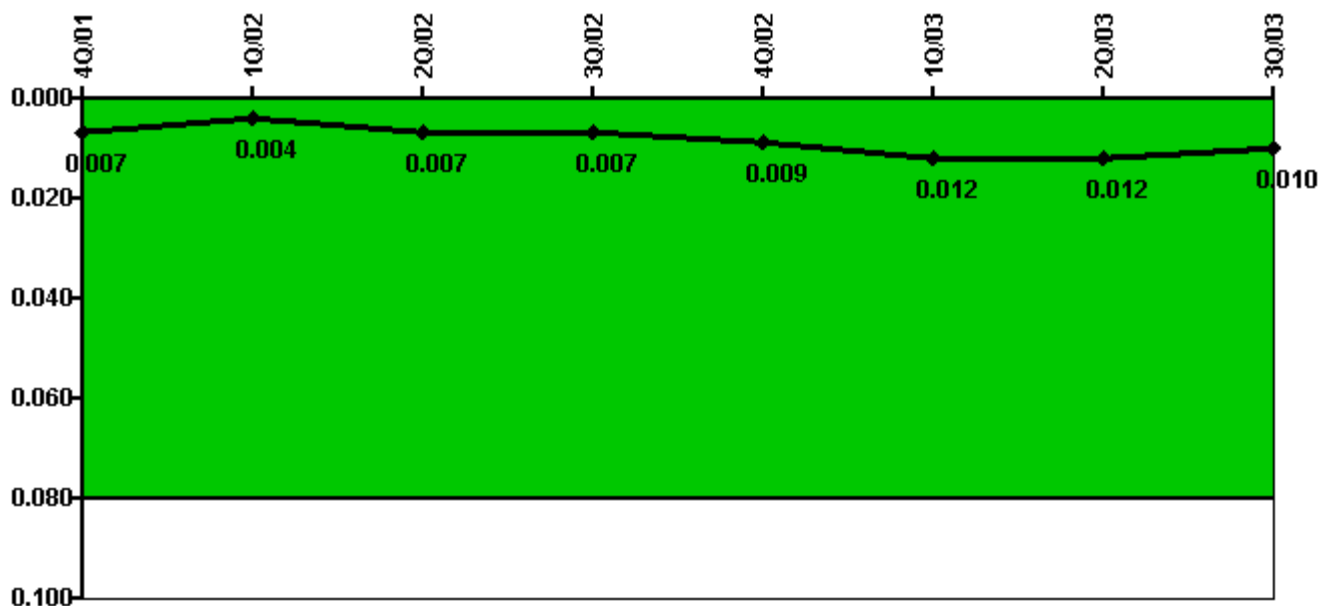
Thresholds: White > 1.0 Yellow > 3.0

Notes

RETS/ODCM Radiological Effluent	4Q/01	1Q/02	2Q/02	3Q/02	4Q/02	1Q/03	2Q/03	3Q/03
RETS/ODCM occurrences	0	0	0	0	0	0	0	0
Indicator value	0	0	0	0	0	0	0	0

Licensee Comments: none

Protected Area Security Performance Index



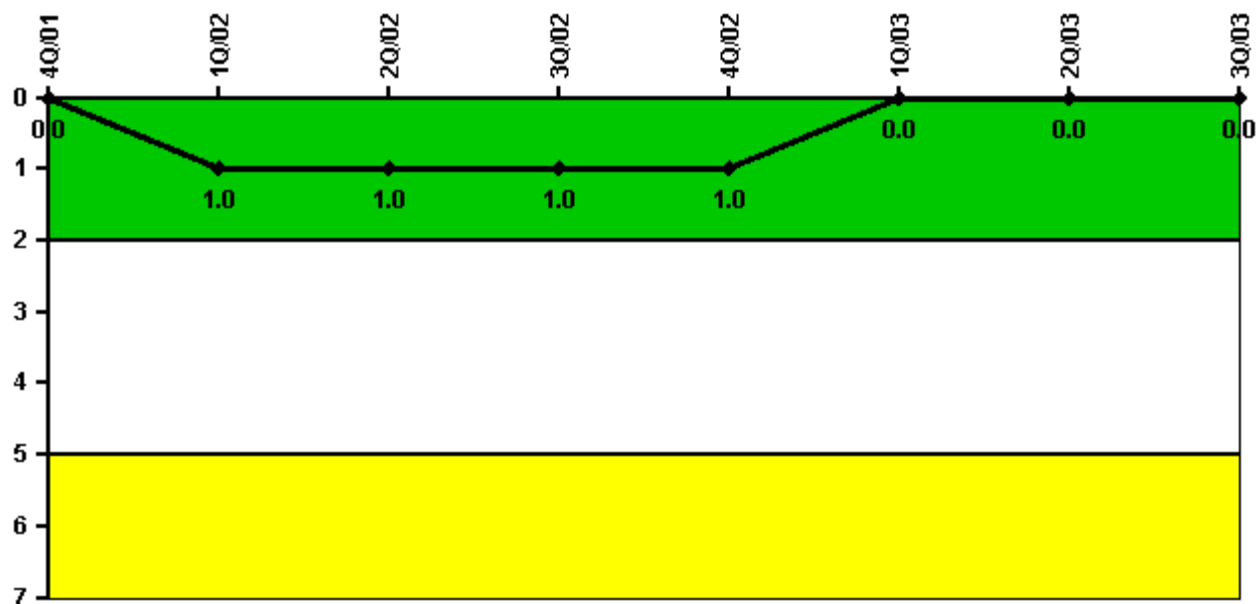
Thresholds: White > 0.080

Notes

Protected Area Security Performance Index	4Q/01	1Q/02	2Q/02	3Q/02	4Q/02	1Q/03	2Q/03	3Q/03
IDS compensatory hours	13.80	36.60	92.60	64.70	60.90	129.50	52.10	5.90
CCTV compensatory hours	8.8	9.6	13.1	0	26.4	41.5	15.7	0.9
IDS normalization factor	2.35	2.35	2.35	2.35	2.35	2.35	2.35	2.35
CCTV normalization factor	1.2	1.2	1.2	1.2	1.2	1.2	1.2	1.2
Index Value	0.007	0.004	0.007	0.007	0.009	0.012	0.012	0.010

Licensee Comments: none

Personnel Screening Program



Thresholds: White > 2.0 Yellow > 5.0

Notes

Personnel Screening Program	4Q/01	1Q/02	2Q/02	3Q/02	4Q/02	1Q/03	2Q/03	3Q/03
Program failures	0	1	0	0	0	0	0	0
Indicator value	0	1	1	1	1	0	0	0

Licensee Comments: none

FFD/Personnel Reliability



Thresholds: White > 2.0 Yellow > 5.0

Notes

FFD/Personnel Reliability	4Q/01	1Q/02	2Q/02	3Q/02	4Q/02	1Q/03	2Q/03	3Q/03
Program Failures	0	0	0	0	0	0	0	0
Indicator value	0	0	0	0	0	0	0	0

Licensee Comments: none

▲ [PI Summary](#) | [Inspection Findings Summary](#) | [Reactor Oversight Process](#)

Last Modified: October 22, 2003