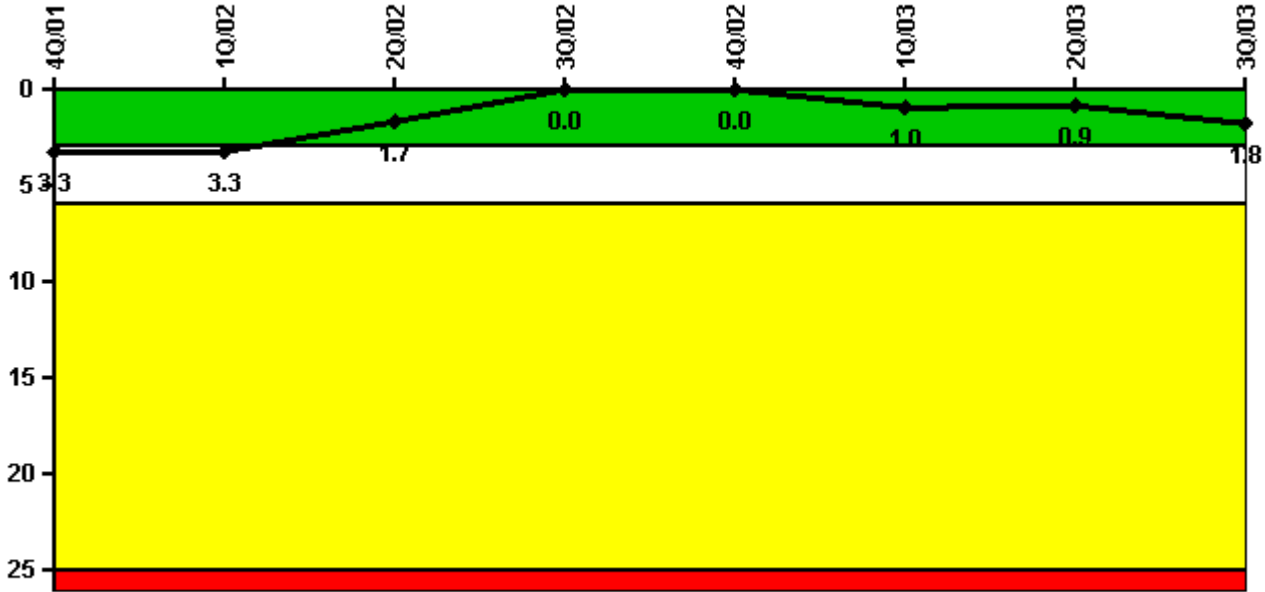


# La Salle 2

## 3Q/2003 Performance Indicators

Licensee's General Comments: none

### Unplanned Scrams per 7000 Critical Hrs



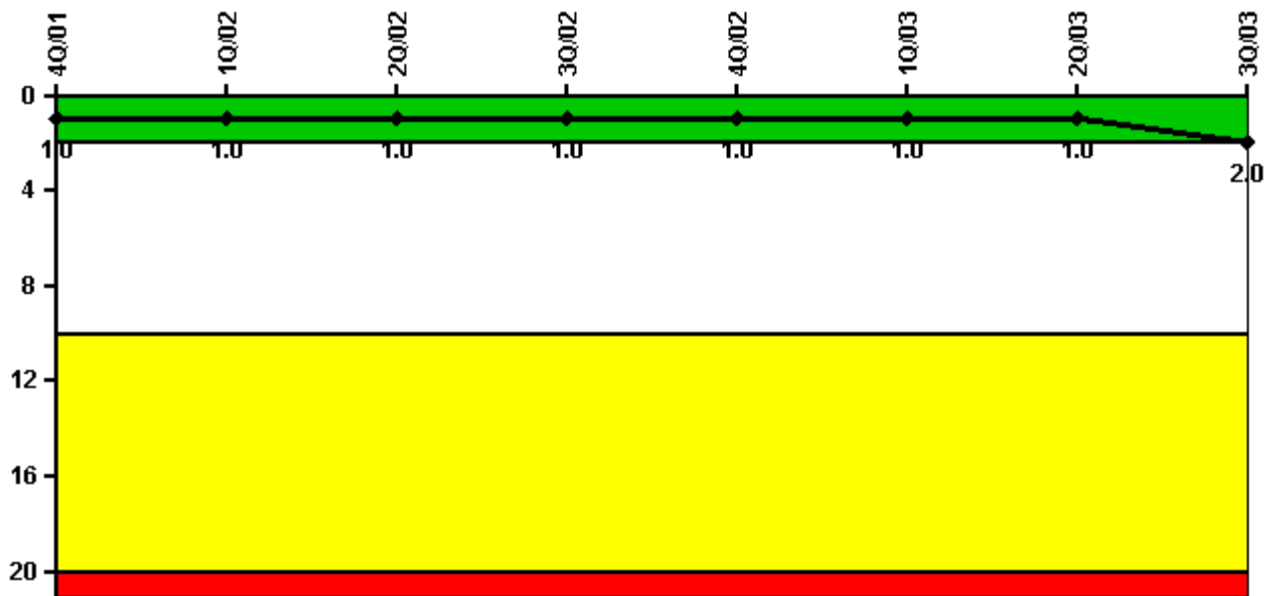
Thresholds: White > 3.0 Yellow > 6.0 Red > 25.0

### Notes

Unplanned Scrams per 7000 Critical Hrs	4Q/01	1Q/02	2Q/02	3Q/02	4Q/02	1Q/03	2Q/03	3Q/03
Unplanned scrams	0	0	0	0	0	1.0	0	1.0
Critical hours	2209.0	2160.0	1819.8	2208.0	1948.4	1383.3	2183.0	2111.4
Indicator value	3.3	3.3	1.7	0	0	1.0	0.9	1.8

Licensee Comments: none

### Scrams with Loss of Normal Heat Removal



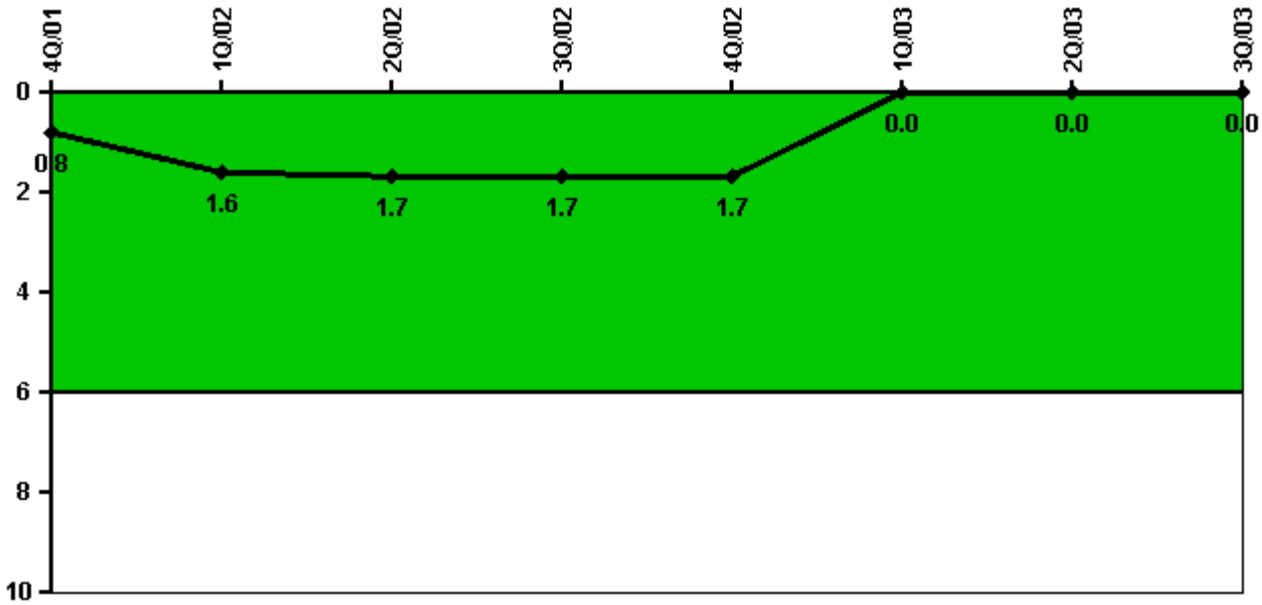
Thresholds: White > 2.0 Yellow > 10.0 Red > 20.0

#### Notes

Scrams with Loss of Normal Heat Removal	4Q/01	1Q/02	2Q/02	3Q/02	4Q/02	1Q/03	2Q/03	3Q/03
Scrams	0	0	0	0	0	0	0	1.0
Indicator value	1.0	1.0	1.0	1.0	1.0	1.0	1.0	2.0

Licensee Comments: none

### Unplanned Power Changes per 7000 Critical Hrs



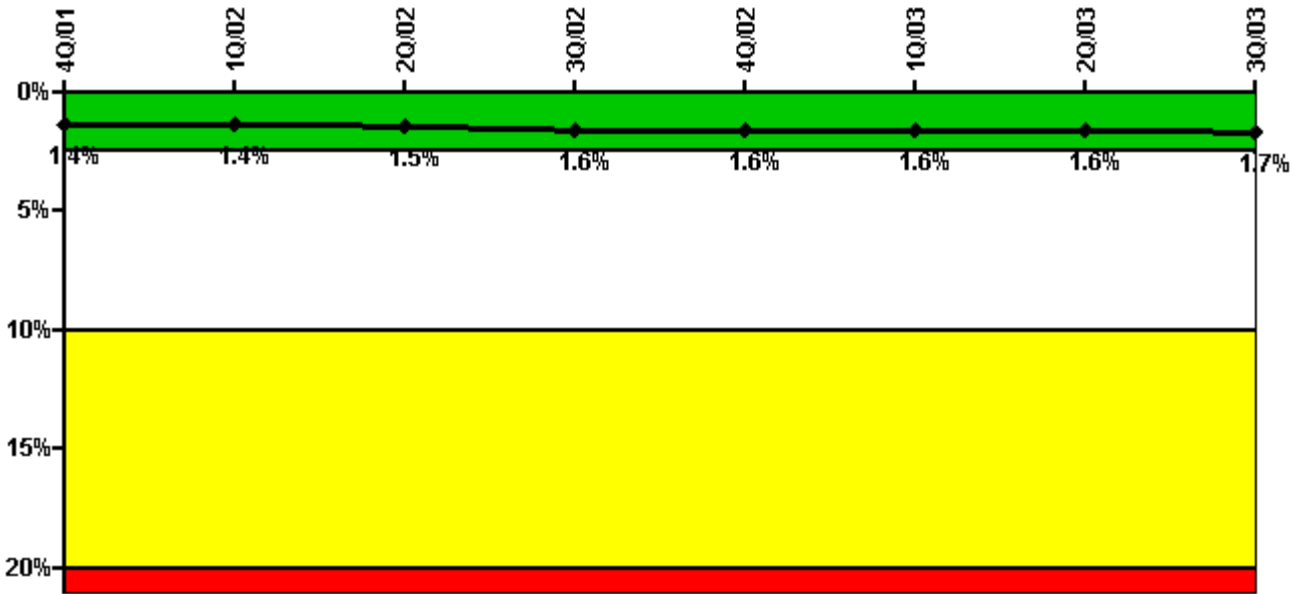
Thresholds: White > 6.0

#### Notes

Unplanned Power Changes per 7000 Critical Hrs	4Q/01	1Q/02	2Q/02	3Q/02	4Q/02	1Q/03	2Q/03	3Q/03
Unplanned power changes	0	2.0	0	0	0	0	0	0
Critical hours	2209.0	2160.0	1819.8	2208.0	1948.4	1383.3	2183.0	2111.4
Indicator value	0.8	1.6	1.7	1.7	1.7	0	0	0

Licensee Comments: none

### Safety System Unavailability, Emergency AC Power, >2EDG



Thresholds: White > 2.5% Yellow > 10.0% Red > 20.0%

**Notes**

Safety System Unavailability, Emergency AC Power, >2EDG	4Q/01	1Q/02	2Q/02	3Q/02	4Q/02	1Q/03	2Q/03	3Q/03
<b>Train 1</b>								
Planned unavailable hours	61.05	5.20	6.95	82.40	1.13	20.10	21.60	43.63
Unplanned unavailable hours	0	6.30	0	28.00	0	0	51.15	0
Fault exposure hours	336.00	0	0	0	0	0	0	0
Effective Reset hours	0	0	0	0	0	0	0	0
Required hours	2209.00	2160.00	2183.00	2208.00	2209.00	2160.00	2183.00	2208.00
<b>Train 2</b>								
Planned unavailable hours	70.75	42.12	1.22	0.75	35.65	55.53	2.72	0.75
Unplanned unavailable hours	25.43	0	0	0	0	0	0	0
Fault exposure hours	0	0	0	0	0	0	0	0
Effective Reset hours	0	0	0	0	0	0	0	0
Required hours	2209.00	2160.00	2183.00	2208.00	2209.00	2160.00	2183.00	2208.00
<b>Train 3</b>								
Planned unavailable hours	62.61	0.75	75.65	8.93	47.16	80.47	0.75	0.75
Unplanned unavailable hours	0	0	6.27	0	0	0	0	0
Fault exposure hours	0	0	0	0	0	0	0	0
Effective Reset hours	0	0	0	0	0	0	0	0
Required hours	2209.00	2160.00	2183.00	2208.00	2209.00	2160.00	2183.00	2208.00
<b>Indicator value</b>	1.4%	1.4%	1.5%	1.6%	1.6%	1.6%	1.6%	1.7%

Licensee Comments:

3Q/03: A potential 26,304 hours of T/2 fault exposure hours for Train 2 and Train 3 DGs due to inoperable room

coolers was reported in the comments for the 4th quarter 2002. Subsequent analysis has determined that the room coolers and the DGs were operable, and that no fault exposure hours were incurred.

2Q/03: Increased total unavailability hours for the Train 1 DG for April 2003 from 68.12 to 72.50, and increased the unplanned unavailability hours from 0 to 51.15. This is due to a re-evaluation of an event where multiple ventilation dampers closed due to a partial CO2 actuation (See LER 373-2003-002-01). This error has been entered into the Station's corrective action program.

3Q/02: September 2002 Unit 2 Train 3 planned unavailability hours changed from 0.25 to 8.43. This was due to a data entry error that has been entered into the Station's corrective action program.

### Safety System Unavailability, High Pressure Injection System (HPCS)



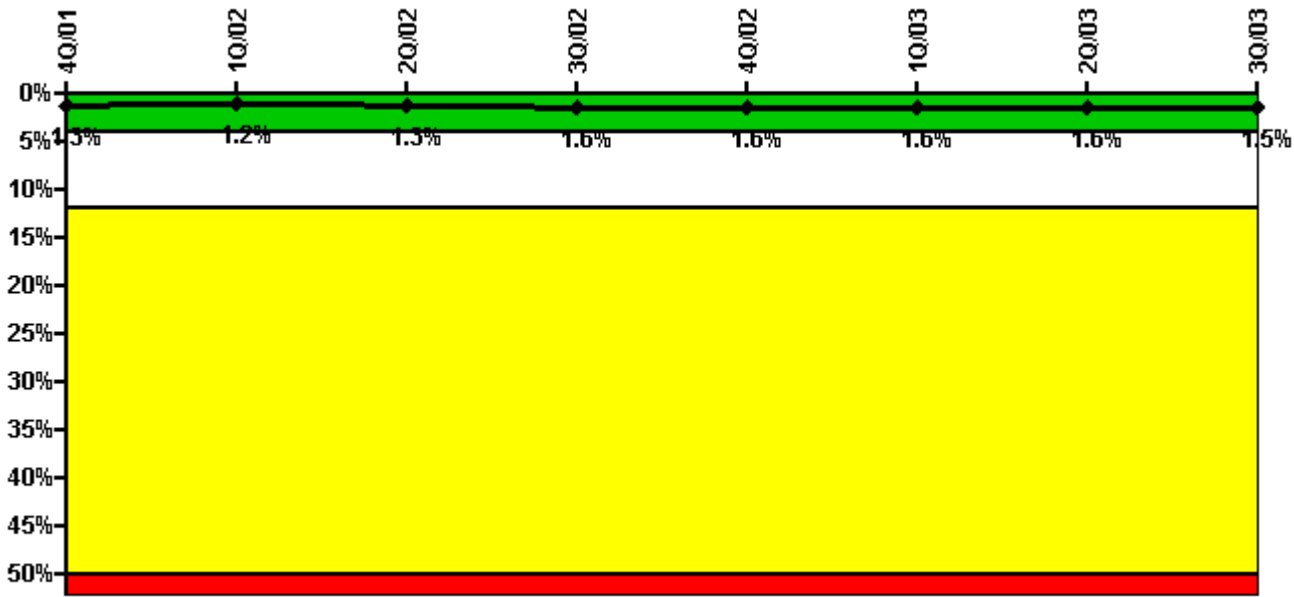
Thresholds: White > 1.5% Yellow > 4.0% Red > 20.0%

#### Notes

Safety System Unavailability, High Pressure Injection System (HPCS)	4Q/01	1Q/02	2Q/02	3Q/02	4Q/02	1Q/03	2Q/03	3Q/03
Train 1								
Planned unavailable hours	43.72	0	20.10	0	73.80	81.40	0	0
Unplanned unavailable hours	0	0	0	0	0	0	0	0
Fault exposure hours	0	0	0	0	0	0	0	0
Effective Reset hours	0	0	0	0	0	0	0	0
Required hours	2209.00	2160.00	1819.80	2208.00	1948.40	1383.30	2183.00	2111.40
Indicator value	0.4%	0.4%	0.4%	0.4%	0.7%	1.1%	1.0%	1.0%

Licensee Comments: none

### Safety System Unavailability, Heat Removal System (RCIC)



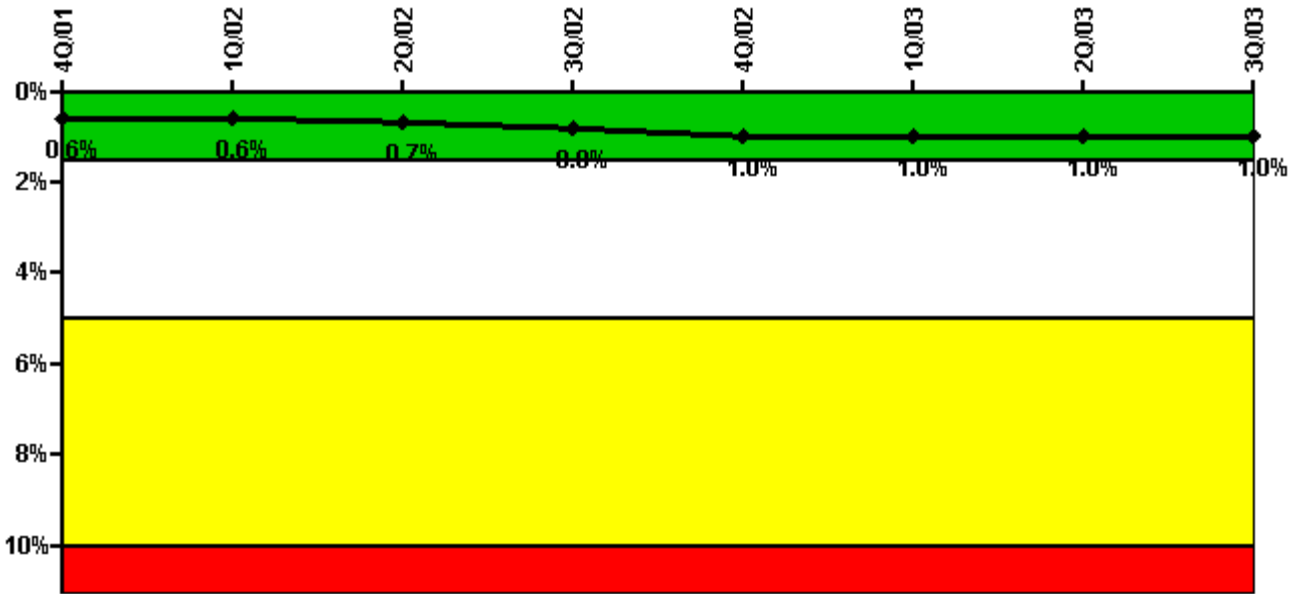
Thresholds: White > 4.0% Yellow > 12.0% Red > 50.0%

#### Notes

Safety System Unavailability, Heat Removal System (RCIC)	4Q/01	1Q/02	2Q/02	3Q/02	4Q/02	1Q/03	2Q/03	3Q/03
Train 1								
Planned unavailable hours	7.90	1.60	40.20	43.00	2.80	0.40	13.50	1.53
Unplanned unavailable hours	0	0	3.70	20.10	0.30	6.00	13.30	0
Fault exposure hours	0	0	0	0	0	0	0	0
Effective Reset hours	0	0	0	0	0	0	0	0
Required hours	2209.00	2160.00	1819.80	2208.00	1948.40	1383.30	2183.00	2111.40
Indicator value	1.3%	1.2%	1.3%	1.6%	1.6%	1.6%	1.6%	1.5%

Licensee Comments: none

### Safety System Unavailability, Residual Heat Removal System



Thresholds: White > 1.5% Yellow > 5.0% Red > 10.0%

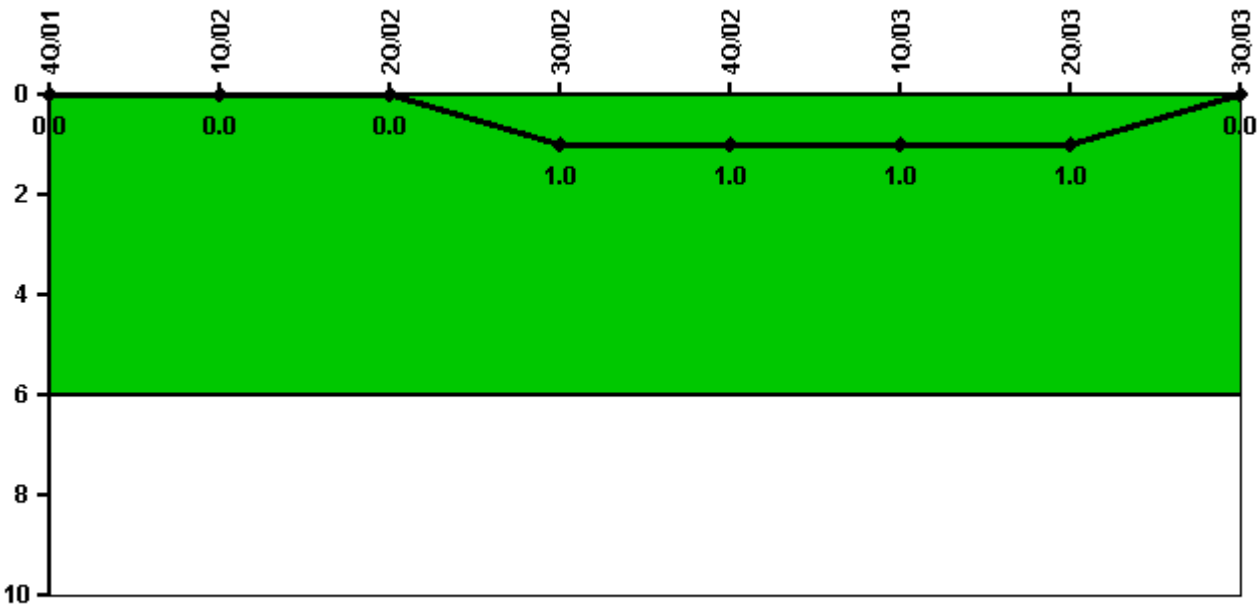
Notes

Safety System Unavailability, Residual Heat Removal System	4Q/01	1Q/02	2Q/02	3Q/02	4Q/02	1Q/03	2Q/03	3Q/03
<b>Train 1</b>								
Planned unavailable hours	8.50	1.00	23.90	56.10	31.10	22.80	0	25.70
Unplanned unavailable hours	0	0	0	20.10	0.30	0	0	0
Fault exposure hours	0	0	0	0	0	0	0	0
Effective Reset hours	0	0	0	0	0	0	0	0
Required hours	2209.00	2160.00	2183.00	2208.00	2209.00	2160.00	2183.00	2208.00
<b>Train 2</b>								
Planned unavailable hours	21.10	0.80	27.40	0	36.40	3.00	40.90	15.20
Unplanned unavailable hours	0	0	0	0.90	0.70	0	0	0
Fault exposure hours	0	0	0	0	0	0	0	0
Effective Reset hours	0	0	0	0	0	0	0	0
Required hours	2209.00	2160.00	2183.00	2208.00	2209.00	2160.00	2183.00	2208.00
Indicator value	0.6%	0.6%	0.7%	0.8%	1.0%	1.0%	1.0%	1.0%

Licensee Comments:

3Q/03: A potential 26,304 hours of T/2 fault exposure hours for Train 2 RHR due to inoperable room coolers was reported in the comments for the 4th quarter 2002. Subsequent analysis has determined that the room coolers and RHR were operable in this condition, and that no fault exposure hours were incurred.

### Safety System Functional Failures (BWR)



Thresholds: White > 6.0

#### Notes

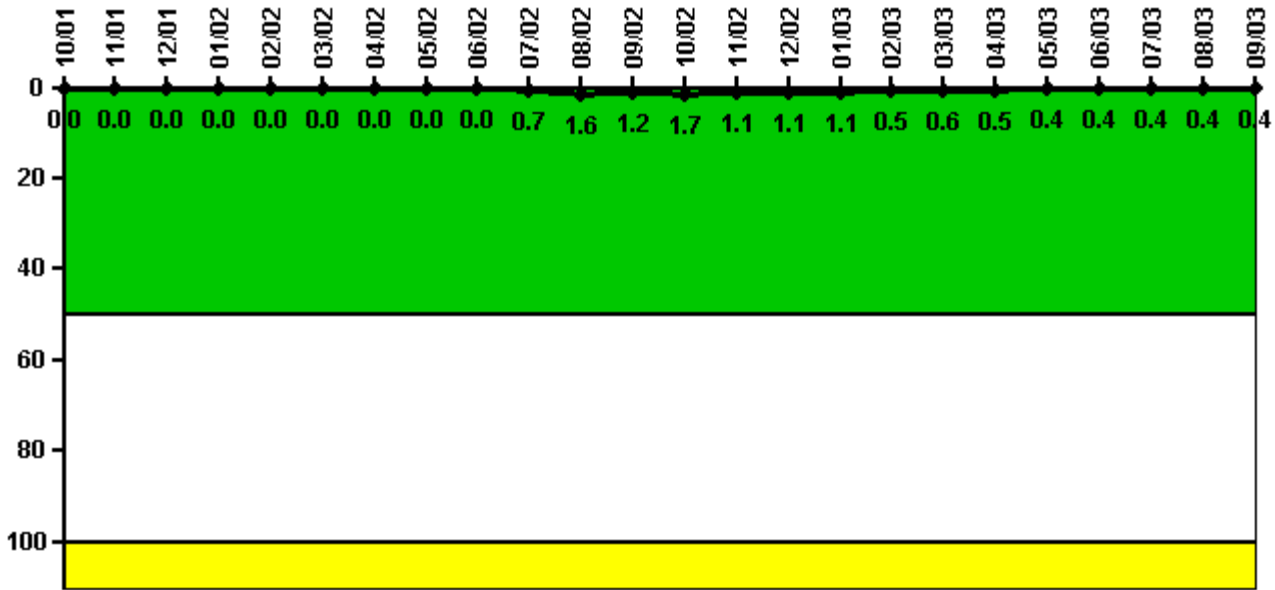
Safety System Functional Failures (BWR)	4Q/01	1Q/02	2Q/02	3Q/02	4Q/02	1Q/03	2Q/03	3Q/03
Safety System Functional Failures	0	0	0	1	0	0	0	0
Indicator value	0	0	0	1	1	1	1	0

Licensee Comments:

1Q/03: An SSFF was counted for the Unit 2 HPCS in January 2003 due to an inoperable room cooler (See LER 373-2002-001). Subsequent analysis determined that the room cooler and HPCS were operable, and the LER was retracted on August 4, 2003. The SSFF count for the 1st quarter 2003 has been changed to zero.



### Reactor Coolant System Activity



Thresholds: White > 50.0 Yellow > 100.0

#### Notes

Reactor Coolant System Activity	10/01	11/01	12/01	1/02	2/02	3/02	4/02	5/02	6/02	7/02	8/02	9/02
Maximum activity	0.000009	0.000008	0.000011	0.000010	0.000017	0.000013	0.000020	0.000048	0.000039	0.001420	0.003120	0.002370
Technical specification limit	0.2	0.2	0.2	0.2	0.2	0.2	0.2	0.2	0.2	0.2	0.2	0.2
Indicator value	0	0	0	0	0	0	0	0	0	0.7	1.6	1.2

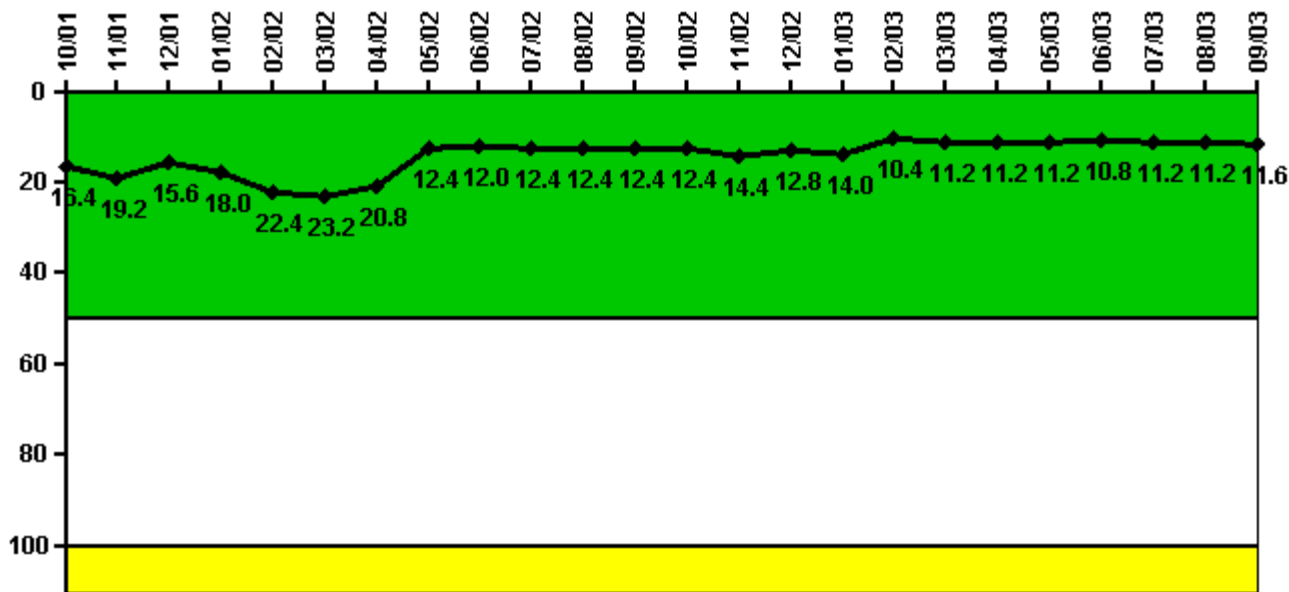
  

Reactor Coolant System Activity	10/02	11/02	12/02	1/03	2/03	3/03	4/03	5/03	6/03	7/03	8/03	9/03
Maximum activity	0.003450	0.002150	0.002120	0.002150	0.000989	0.001210	0.001000	0.000731	0.000839	0.000744	0.000737	0.000786
Technical specification limit	0.2	0.2	0.2	0.2	0.2	0.2	0.2	0.2	0.2	0.2	0.2	0.2
Indicator value	1.7	1.1	1.1	1.1	0.5	0.6	0.5	0.4	0.4	0.4	0.4	0.4

Licensee Comments:

6/03: May 2003 Unit 2 RCS activity was changed from 0.00731 to 0.000731. This was due to a data entry error that has been entered into the Station's corrective action program.

### Reactor Coolant System Leakage



Thresholds: White > 50.0 Yellow > 100.0

**Notes**

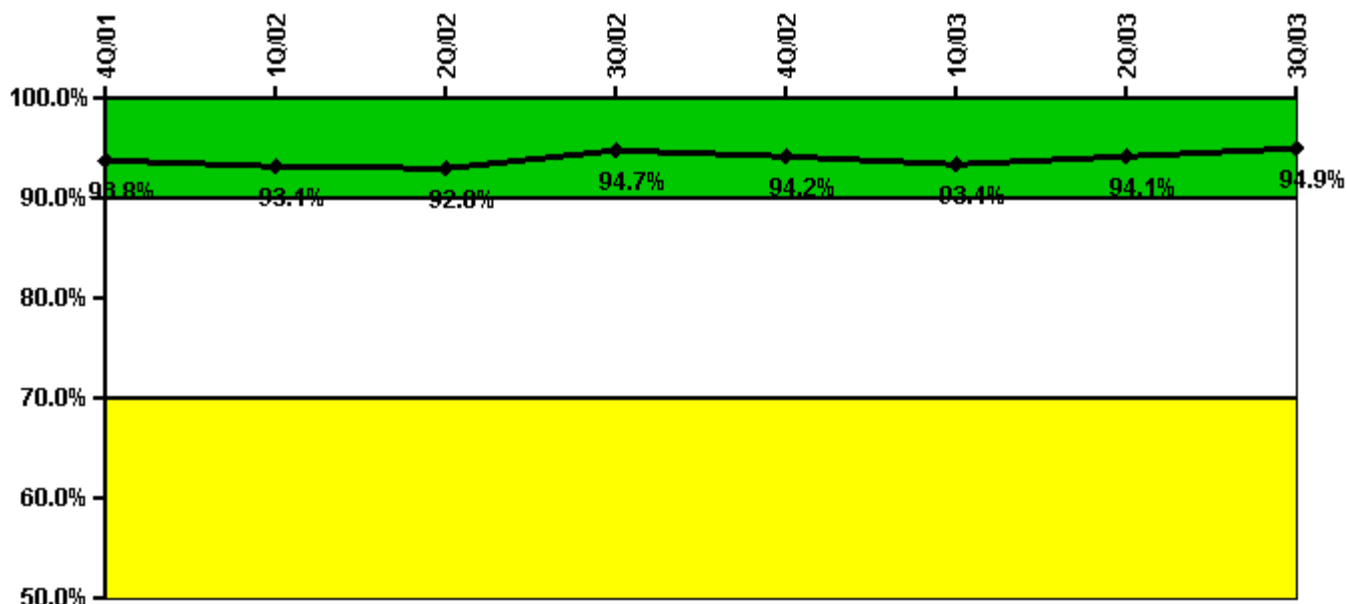
Reactor Coolant System Leakage	10/01	11/01	12/01	1/02	2/02	3/02	4/02	5/02	6/02	7/02	8/02	9/02
Maximum leakage	4.100	4.800	3.900	4.500	5.600	5.800	5.200	3.100	3.000	3.100	3.100	3.100
Technical specification limit	25.0	25.0	25.0	25.0	25.0	25.0	25.0	25.0	25.0	25.0	25.0	25.0
Indicator value	16.4	19.2	15.6	18.0	22.4	23.2	20.8	12.4	12.0	12.4	12.4	12.4

Reactor Coolant System Leakage	10/02	11/02	12/02	1/03	2/03	3/03	4/03	5/03	6/03	7/03	8/03	9/03
Maximum leakage	3.100	3.600	3.200	3.500	2.600	2.800	2.800	2.800	2.700	2.800	2.800	2.900
Technical specification limit	25.0	25.0	25.0	25.0	25.0	25.0	25.0	25.0	25.0	25.0	25.0	25.0
Indicator value	12.4	14.4	12.8	14.0	10.4	11.2	11.2	11.2	10.8	11.2	11.2	11.6

Licensee Comments: none

### Drill/Exercise Performance



Thresholds: White < 90.0% Yellow < 70.0%

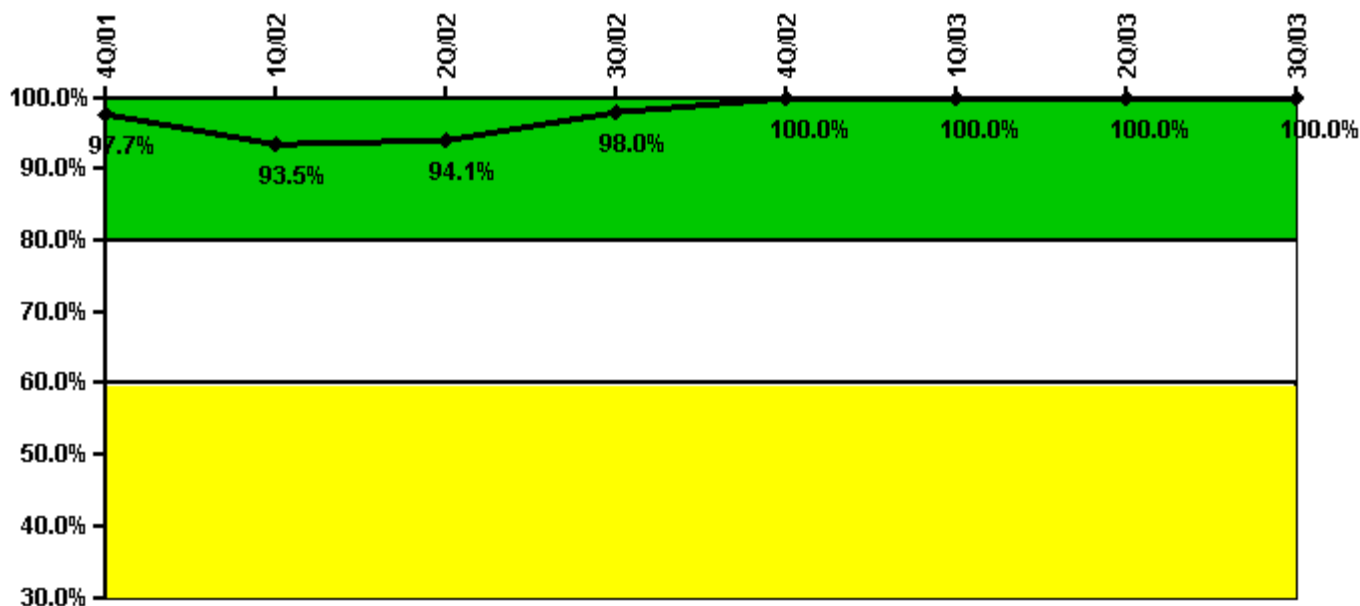
#### Notes

Drill/Exercise Performance	4Q/01	1Q/02	2Q/02	3Q/02	4Q/02	1Q/03	2Q/03	3Q/03
Successful opportunities	9.0	18.0	11.0	47.0	17.0	13.0	46.0	44.0
Total opportunities	10.0	20.0	12.0	48.0	18.0	14.0	47.0	47.0
Indicator value	93.8%	93.1%	92.8%	94.7%	94.2%	93.4%	94.1%	94.9%

Licensee Comments:

3Q/03: LORT JPMs are still in progress and are held due to exam security requirements. These will be added to the October 2003 data.

### ERO Drill Participation



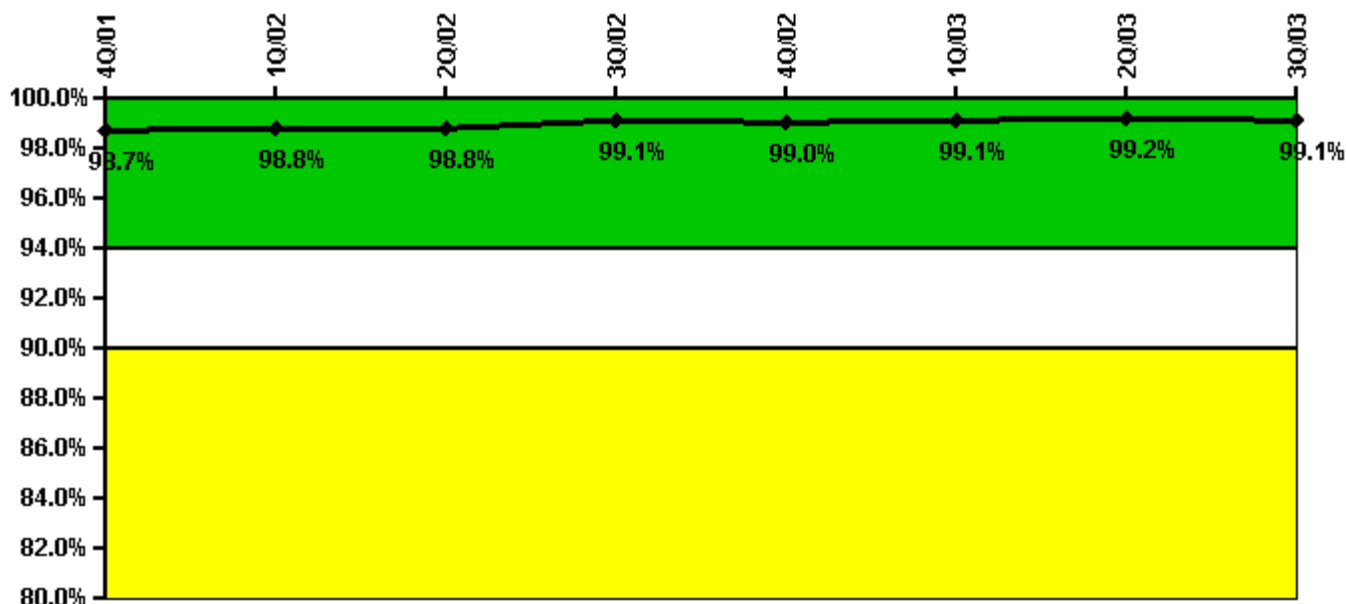
Thresholds: White < 80.0% Yellow < 60.0%

#### Notes

ERO Drill Participation	4Q/01	1Q/02	2Q/02	3Q/02	4Q/02	1Q/03	2Q/03	3Q/03
Participating Key personnel	43.0	43.0	48.0	50.0	51.0	54.0	53.0	56.0
Total Key personnel	44.0	46.0	51.0	51.0	51.0	54.0	53.0	56.0
Indicator value	97.7%	93.5%	94.1%	98.0%	100.0%	100.0%	100.0%	100.0%

Licensee Comments: none

### Alert & Notification System



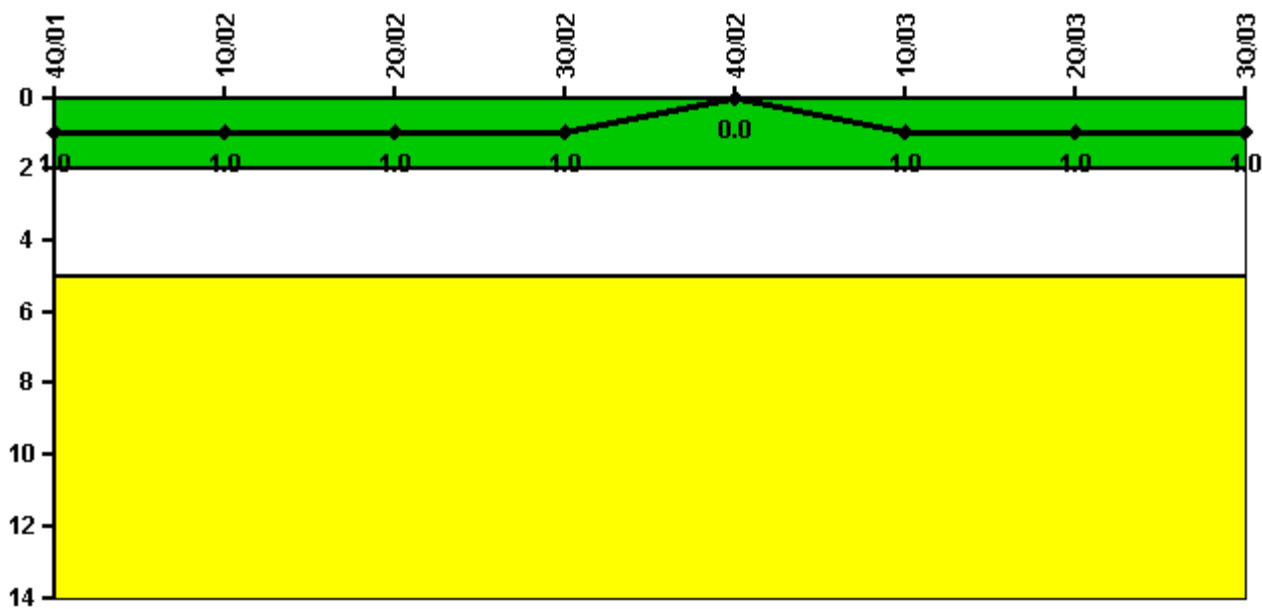
Thresholds: White < 94.0% Yellow < 90.0%

#### Notes

Alert & Notification System	4Q/01	1Q/02	2Q/02	3Q/02	4Q/02	1Q/03	2Q/03	3Q/03
Successful siren-tests	2160	2120	2150	2160	2489	3129	3173	3159
Total sirens-tests	2176	2142	2176	2176	2512	3150	3200	3200
Indicator value	98.7%	98.8%	98.8%	99.1%	99.0%	99.1%	99.2%	99.1%

Licensee Comments: none

### Occupational Exposure Control Effectiveness



Thresholds: White > 2.0 Yellow > 5.0

#### Notes

Occupational Exposure Control Effectiveness	4Q/01	1Q/02	2Q/02	3Q/02	4Q/02	1Q/03	2Q/03	3Q/03
High radiation area occurrences	1	0	0	0	0	1	0	0
Very high radiation area occurrences	0	0	0	0	0	0	0	0
Unintended exposure occurrences	0	0	0	0	0	0	0	0
Indicator value	1	1	1	1	0	1	1	1

Licensee Comments: none

### RETS/ODCM Radiological Effluent



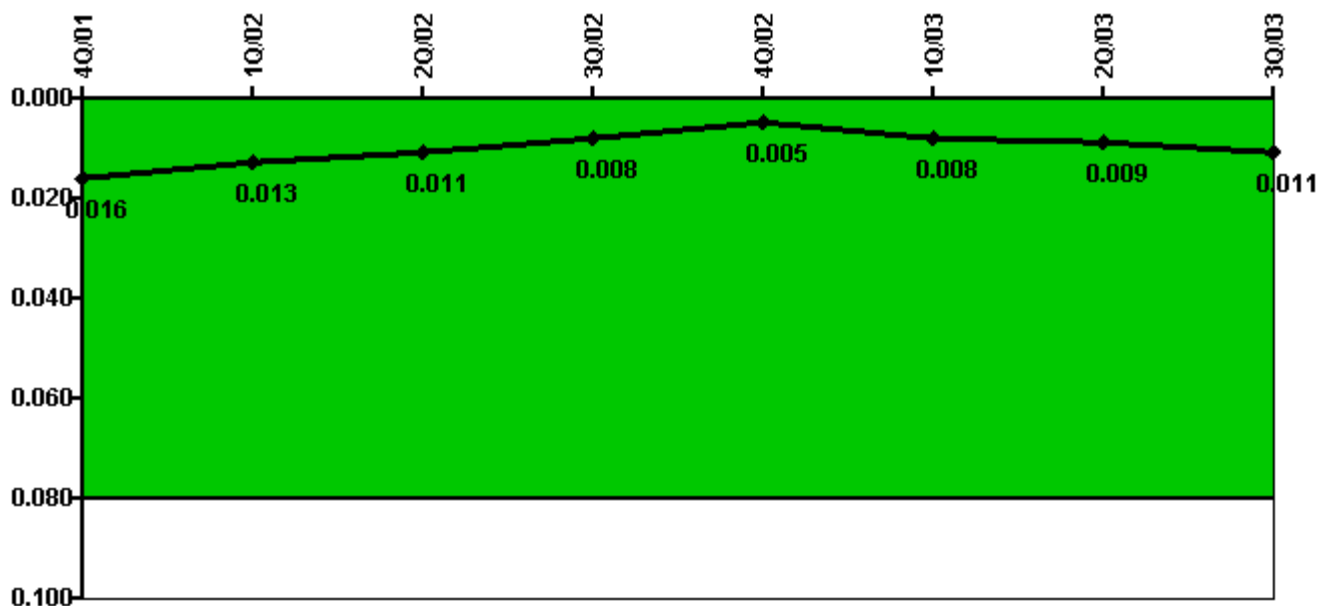
Thresholds: White > 1.0 Yellow > 3.0

#### Notes

RETS/ODCM Radiological Effluent	4Q/01	1Q/02	2Q/02	3Q/02	4Q/02	1Q/03	2Q/03	3Q/03
RETS/ODCM occurrences	0	0	0	0	0	0	0	0
Indicator value	0	0	0	0	0	0	0	0

Licensee Comments: none

### Protected Area Security Performance Index



Thresholds: White > 0.080

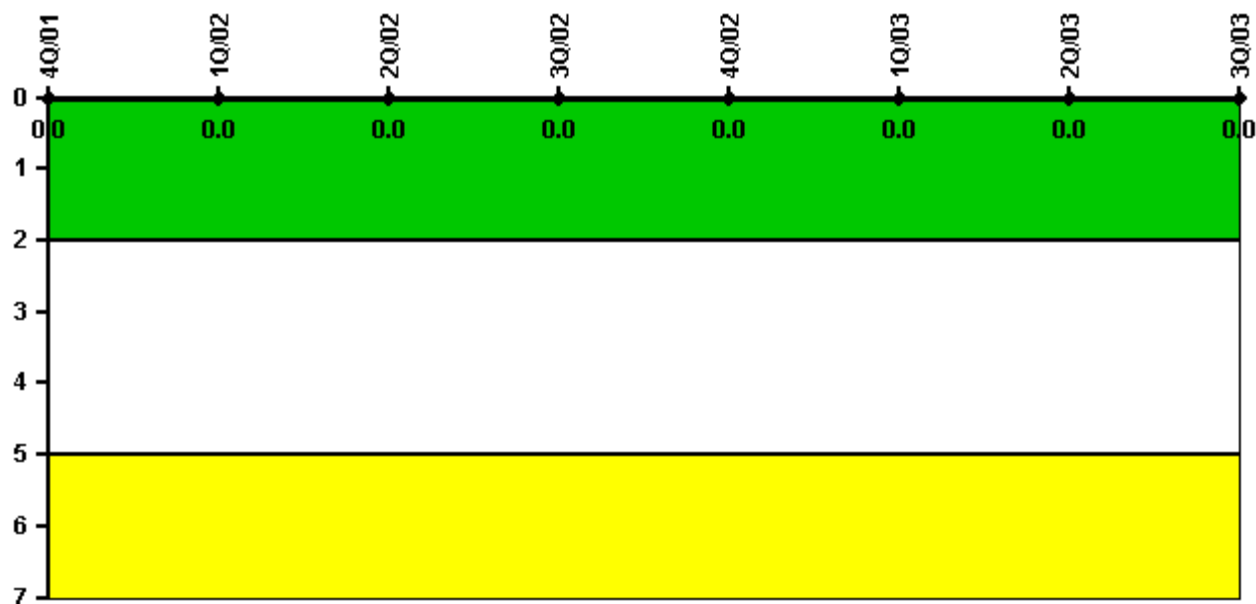
#### Notes

Protected Area Security Performance Index	4Q/01	1Q/02	2Q/02	3Q/02	4Q/02	1Q/03	2Q/03	3Q/03
IDS compensatory hours	68.40	10.80	11.50	36.40	42.60	49.40	47.70	23.90
CCTV compensatory hours	24.6	0	4.7	2.8	0	8.5	4.7	48.9
IDS normalization factor	1.20	1.20	1.20	1.20	1.20	1.20	1.20	1.20
CCTV normalization factor	1.0	1.0	1.0	1.0	1.0	1.0	1.0	1.0
Index Value	0.016	0.013	0.011	0.008	0.005	0.008	0.009	0.011

Licensee Comments: none



### Personnel Screening Program



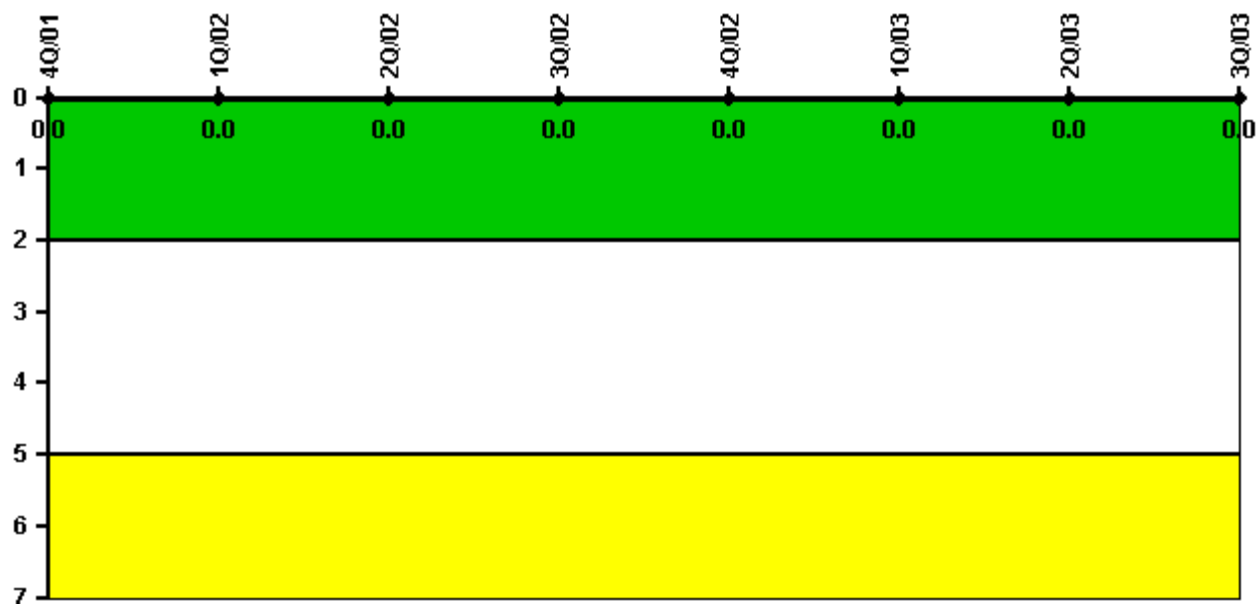
Thresholds: White > 2.0 Yellow > 5.0

#### Notes

Personnel Screening Program	4Q/01	1Q/02	2Q/02	3Q/02	4Q/02	1Q/03	2Q/03	3Q/03
Program failures	0	0	0	0	0	0	0	0
Indicator value	0	0	0	0	0	0	0	0

Licensee Comments: none

### FFD/Personnel Reliability



Thresholds: White > 2.0 Yellow > 5.0

#### Notes

FFD/Personnel Reliability	4Q/01	1Q/02	2Q/02	3Q/02	4Q/02	1Q/03	2Q/03	3Q/03
Program Failures	0	0	0	0	0	0	0	0
Indicator value	0	0	0	0	0	0	0	0

Licensee Comments: none

▲ [PI Summary](#) | [Inspection Findings Summary](#) | [Reactor Oversight Process](#)

Last Modified: October 22, 2003