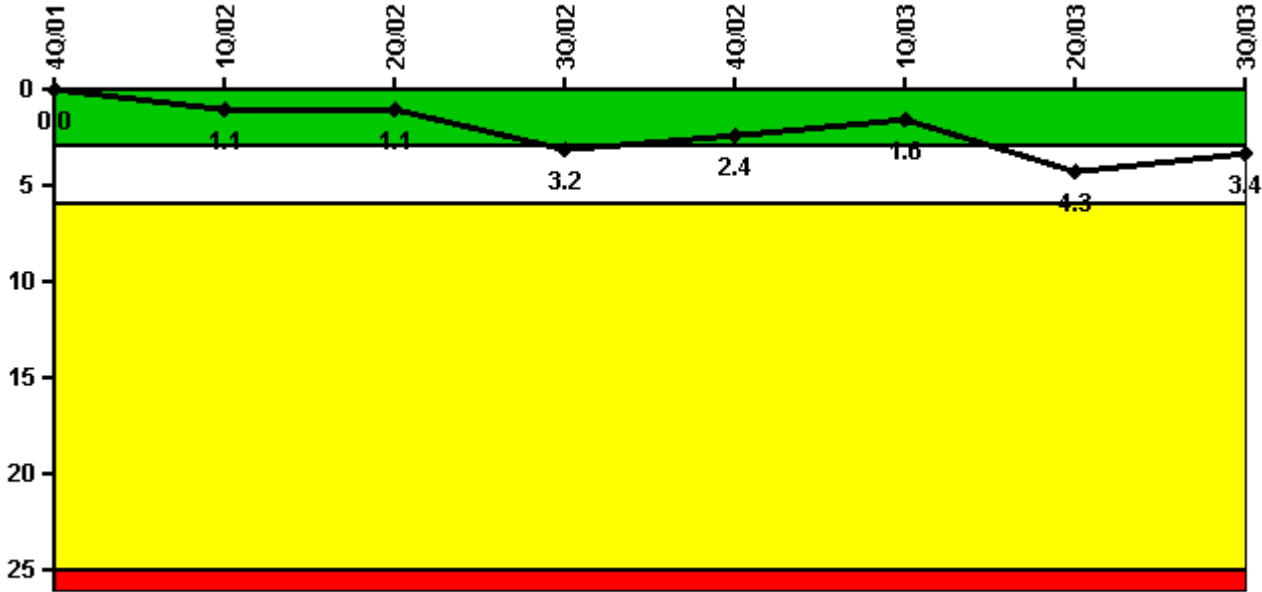


# Harris 1

## 3Q/2003 Performance Indicators

Licensee's General Comments: none

### Unplanned Scrams per 7000 Critical Hrs



Thresholds: White > 3.0 Yellow > 6.0 Red > 25.0

### Notes

Unplanned Scrams per 7000 Critical Hrs	4Q/01	1Q/02	2Q/02	3Q/02	4Q/02	1Q/03	2Q/03	3Q/03
Unplanned scrams	0	1.0	0	2.0	0	0	3.0	1.0
Critical hours	7.5	2142.3	2184.0	2173.9	2209.0	2160.0	1605.6	2190.4
Indicator value	0	1.1	1.1	3.2	2.4	1.6	4.3	3.4

Licensee Comments:

3Q/03: An Unplanned Manual Reactor trip was initiated on 8/17/03.

### Scrams with Loss of Normal Heat Removal



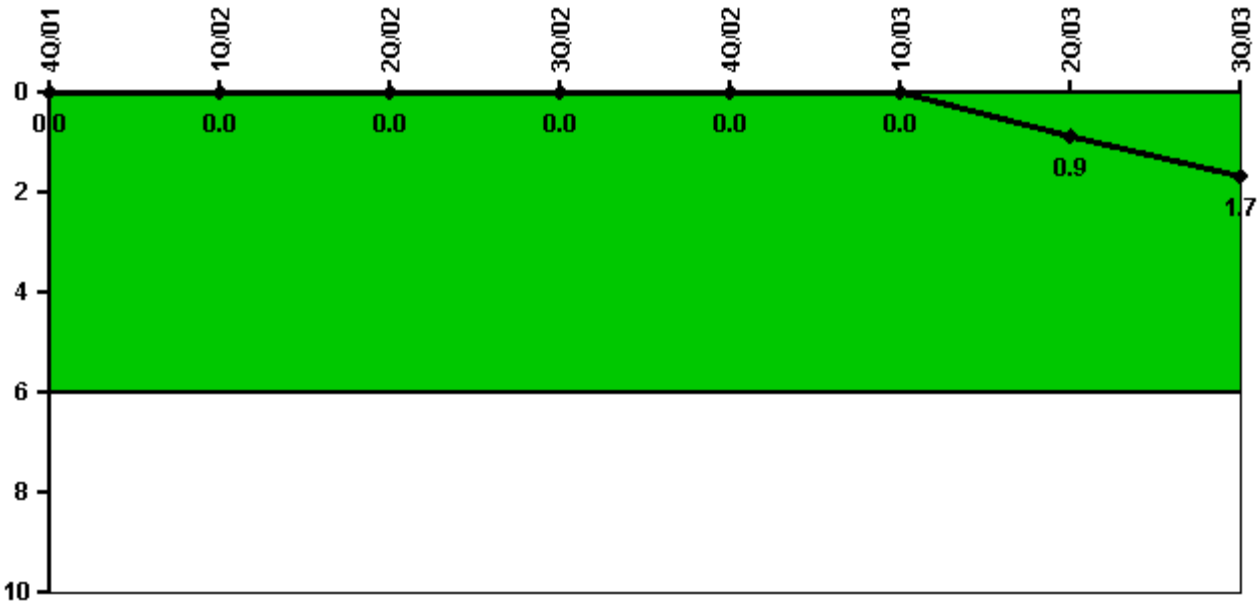
Thresholds: White > 2.0 Yellow > 10.0 Red > 20.0

#### Notes

Scrams with Loss of Normal Heat Removal	4Q/01	1Q/02	2Q/02	3Q/02	4Q/02	1Q/03	2Q/03	3Q/03
Scrams	0	0	0	0	0	0	1.0	0
Indicator value	0	0	0	0	0	0	1.0	1.0

Licensee Comments: none

### Unplanned Power Changes per 7000 Critical Hrs



Thresholds: White > 6.0

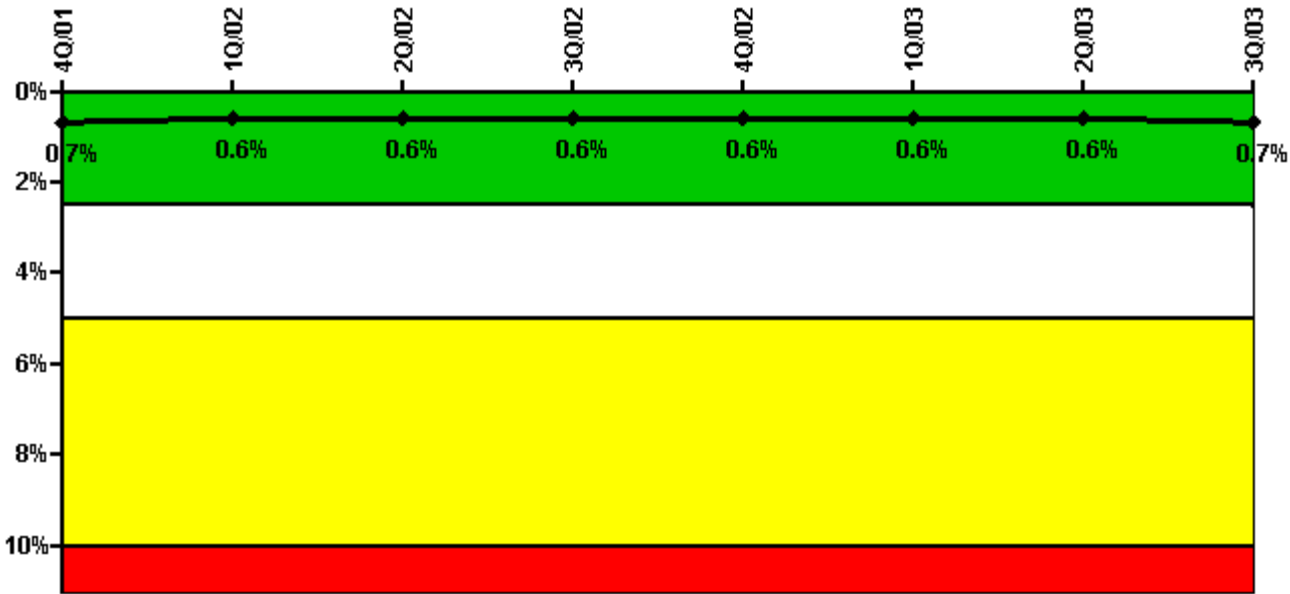
#### Notes

Unplanned Power Changes per 7000 Critical Hrs	4Q/01	1Q/02	2Q/02	3Q/02	4Q/02	1Q/03	2Q/03	3Q/03
Unplanned power changes	0	0	0	0	0	0	1.0	1.0
Critical hours	7.5	2142.3	2184.0	2173.9	2209.0	2160.0	1605.6	2190.4
Indicator value	0	0	0	0	0	0	0.9	1.7

Licensee Comments:

3Q/03: All A-Train pumps in the Condensate and Feedwater train were removed from service requiring a reduction in power to approximately 46%.

### Safety System Unavailability, Emergency AC Power



Thresholds: White > 2.5% Yellow > 5.0% Red > 10.0%

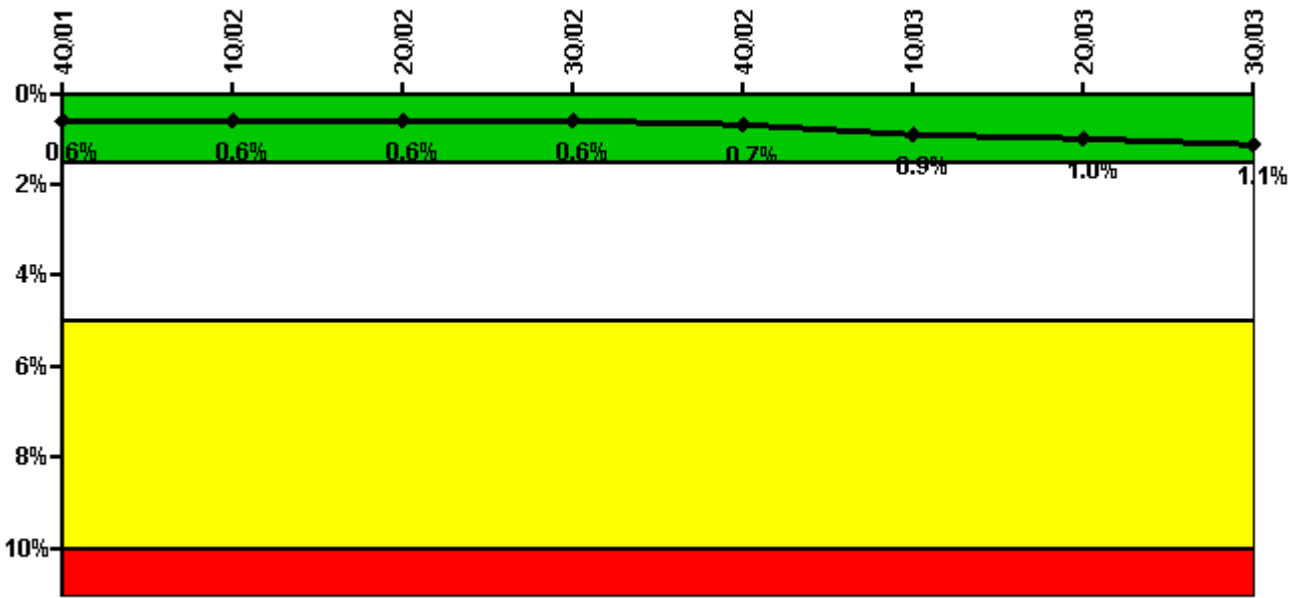
#### Notes

Safety System Unavailability, Emergency AC Power	4Q/01	1Q/02	2Q/02	3Q/02	4Q/02	1Q/03	2Q/03	3Q/03
<b>Train 1</b>								
Planned unavailable hours	1.22	16.98	4.48	10.47	11.20	1.97	17.75	33.50
Unplanned unavailable hours	0	0	0	0	3.20	0	0	0
Fault exposure hours	0	0	0	0	0	0	0	0
Effective Reset hours	0	0	0	0	0	0	0	0
Required hours	837.57	2160.00	2184.00	2208.00	2209.00	2160.00	1859.58	2208.00
<b>Train 2</b>								
Planned unavailable hours	0	14.29	12.35	1.43	17.25	24.03	2.57	54.43
Unplanned unavailable hours	0	0	11.95	0	0	0	0	0
Fault exposure hours	0	0	0	0	0	0	0	0
Effective Reset hours	0	0	0	0	0	0	0	0
Required hours	727.97	2160.00	2184.00	2208.00	2209.00	2160.00	2152.97	2208.00
Indicator value	0.7%	0.6%	0.6%	0.6%	0.6%	0.6%	0.6%	0.7%

Licensee Comments:

3Q/00: Corrected September Train 2 planned data to show additional .01 that was previously dropped due to a rounding error. No impact on color. Corrected August Train 2 planned unavailable hours to 5.63 vs. 5.73 due (3Q/2003 submittal).

### Safety System Unavailability, High Pressure Injection System (HPSI)



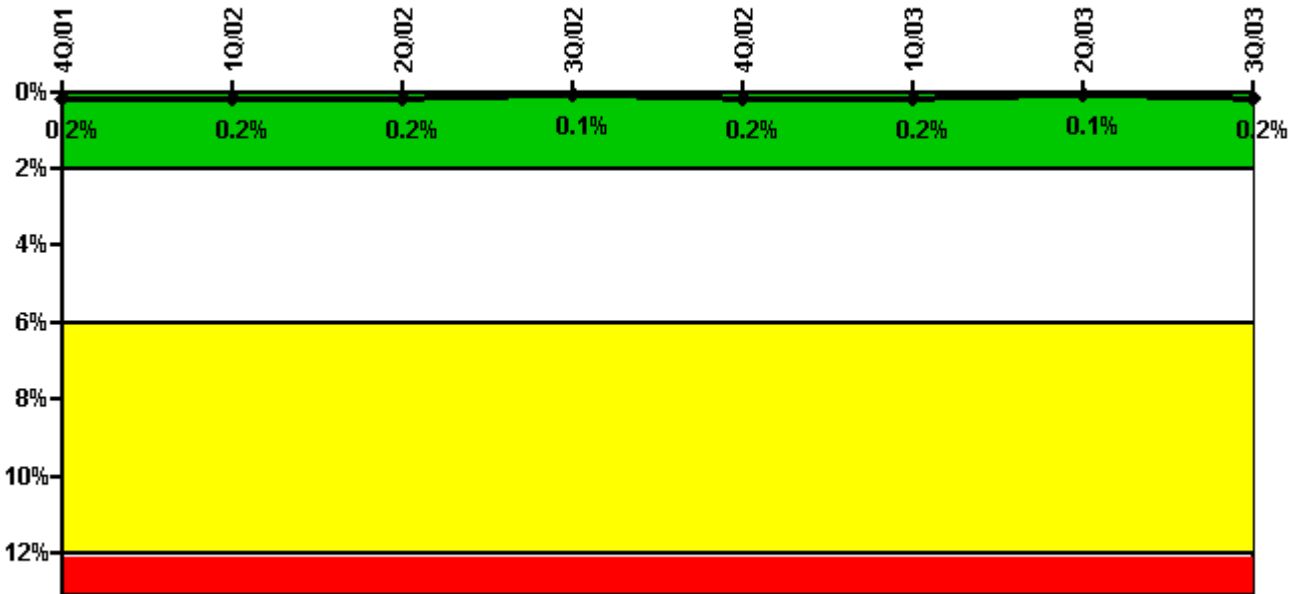
Thresholds: White > 1.5% Yellow > 5.0% Red > 10.0%

**Notes**

Safety System Unavailability, High Pressure Injection System (HPSI)	4Q/01	1Q/02	2Q/02	3Q/02	4Q/02	1Q/03	2Q/03	3Q/03
<b>Train 1</b>								
Planned unavailable hours	0	29.17	16.07	18.05	15.22	71.33	19.50	49.10
Unplanned unavailable hours	0	10.45	0.55	0	18.73	0	0	0
Fault exposure hours	0	0	0	0	0	0	0	0
Effective Reset hours	0	0	0	0	0	0	0	0
Required hours	108.28	2160.00	2184.00	2208.00	2209.00	2160.00	1830.60	2208.00
<b>Train 2</b>								
Planned unavailable hours	0	10.90	22.90	16.13	6.68	37.72	15.00	22.30
Unplanned unavailable hours	0	0	0	0	0	7.65	0	0
Fault exposure hours	0	0	0	0	0	0	0	0
Effective Reset hours	0	0	0	0	0	0	0	0
Required hours	108.28	2160.00	2184.00	2208.00	2209.00	2160.00	1830.60	2208.00
Indicator value	0.6%	0.6%	0.6%	0.6%	0.7%	0.9%	1.0%	1.1%

Licensee Comments: none

### Safety System Unavailability, Heat Removal System (AFW)



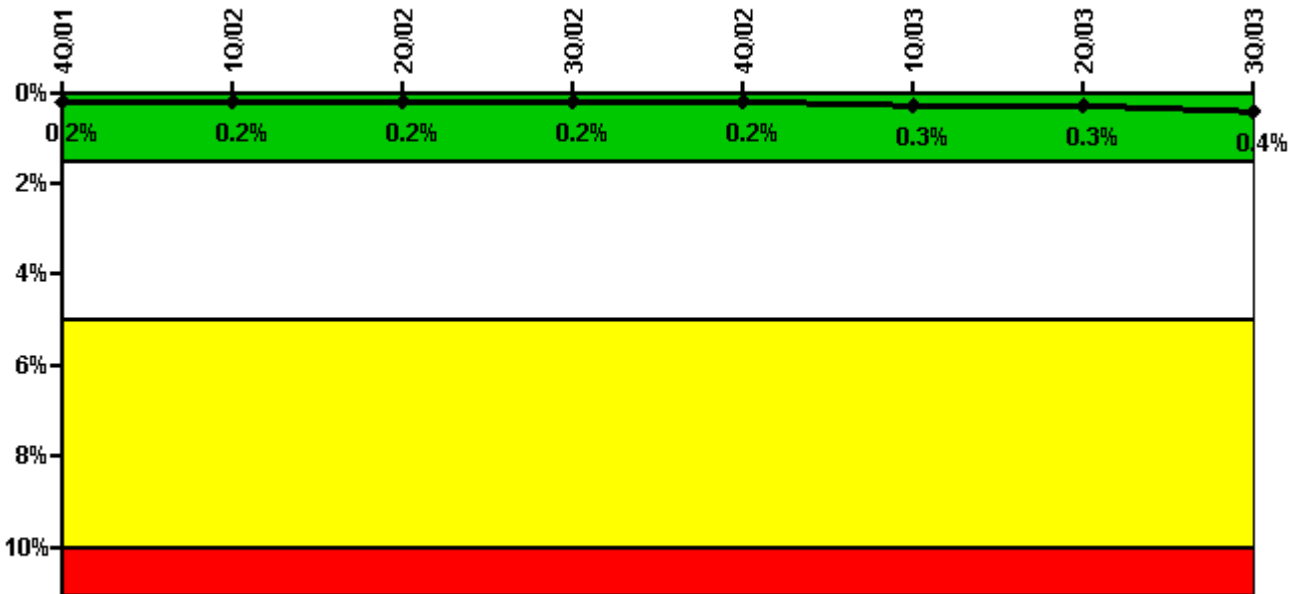
Thresholds: White > 2.0% Yellow > 6.0% Red > 12.0%

#### Notes

Safety System Unavailability, Heat Removal System (AFW)	4Q/01	1Q/02	2Q/02	3Q/02	4Q/02	1Q/03	2Q/03	3Q/03
<b>Train 1</b>								
Planned unavailable hours	0	0	0	0.73	0	0	1.13	5.40
Unplanned unavailable hours	0	0	0	0	0	0	0	0
Fault exposure hours	0	0	0	0	0	0	0	0
Effective Reset hours	0	0	0	0	0	0	0	0
Required hours	68.72	2160.00	2184.00	2208.00	2209.00	2160.00	1731.15	2208.00
<b>Train 2</b>								
Planned unavailable hours	0	0	6.00	0	0	1.50	1.13	7.60
Unplanned unavailable hours	0	0	0	0	0	0	0	0
Fault exposure hours	0	0	0	0	0	0	0	0
Effective Reset hours	0	0	0	0	0	0	0	0
Required hours	68.72	2160.00	2184.00	2208.00	2209.00	2160.00	1731.15	2208.00
<b>Train 3</b>								
Planned unavailable hours	0	11.67	0	0	9.00	21.17	5.57	18.70
Unplanned unavailable hours	0	0	1.20	0	0	0	0	0
Fault exposure hours	0	0	0	0	0	0	0	0
Effective Reset hours	0	0	0	0	0	0	0	0
Required hours	68.72	2160.00	2184.00	2208.00	2209.00	2160.00	1731.15	2208.00
Indicator value	0.2%	0.2%	0.2%	0.1%	0.2%	0.2%	0.1%	0.2%

Licensee Comments: none

### Safety System Unavailability, Residual Heat Removal System



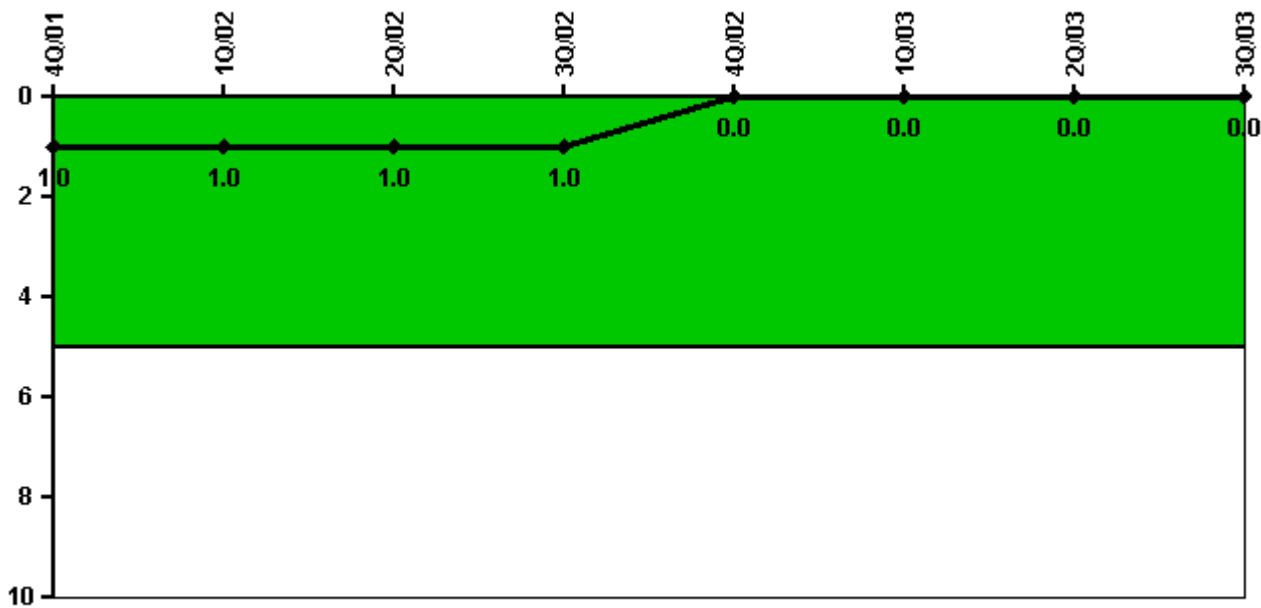
Thresholds: White > 1.5% Yellow > 5.0% Red > 10.0%

**Notes**

Safety System Unavailability, Residual Heat Removal System	4Q/01	1Q/02	2Q/02	3Q/02	4Q/02	1Q/03	2Q/03	3Q/03
<b>Train 1</b>								
Planned unavailable hours	0	19.28	3.99	3.40	8.58	3.82	15.05	22.10
Unplanned unavailable hours	0	0	0	0	0	0	0	0
Fault exposure hours	0	0	0	0	0	0	0	0
Effective Reset hours	0	0	0	0	0	0	0	0
Required hours	726.75	2160.00	2184.00	2208.00	2209.00	2160.00	2097.50	2208.00
<b>Train 2</b>								
Planned unavailable hours	0	4.40	14.97	0	1.82	28.20	3.47	9.90
Unplanned unavailable hours	0	0	0	0	0	0	0	0
Fault exposure hours	0	0	0	0	0	0	0	0
Effective Reset hours	0	0	0	0	0	0	0	0
Required hours	726.75	2160.00	2184.00	2208.00	2209.00	2160.00	2097.50	2208.00
Indicator value	0.2%	0.2%	0.2%	0.2%	0.2%	0.3%	0.3%	0.4%

Licensee Comments: none

### Safety System Functional Failures (PWR)



Thresholds: White > 5.0

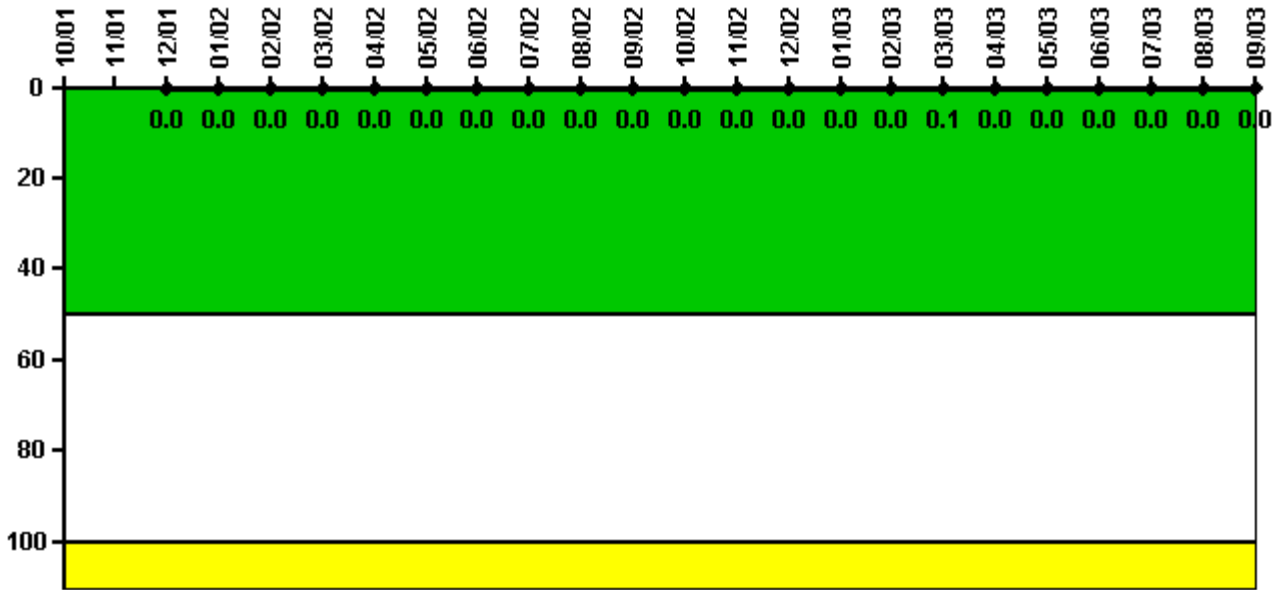
#### Notes

Safety System Functional Failures (PWR)	4Q/01	1Q/02	2Q/02	3Q/02	4Q/02	1Q/03	2Q/03	3Q/03
Safety System Functional Failures	1	0	0	0	0	0	0	0
Indicator value	1	1	1	1	0	0	0	0

Licensee Comments: none



### Reactor Coolant System Activity



Thresholds: White > 50.0 Yellow > 100.0

#### Notes

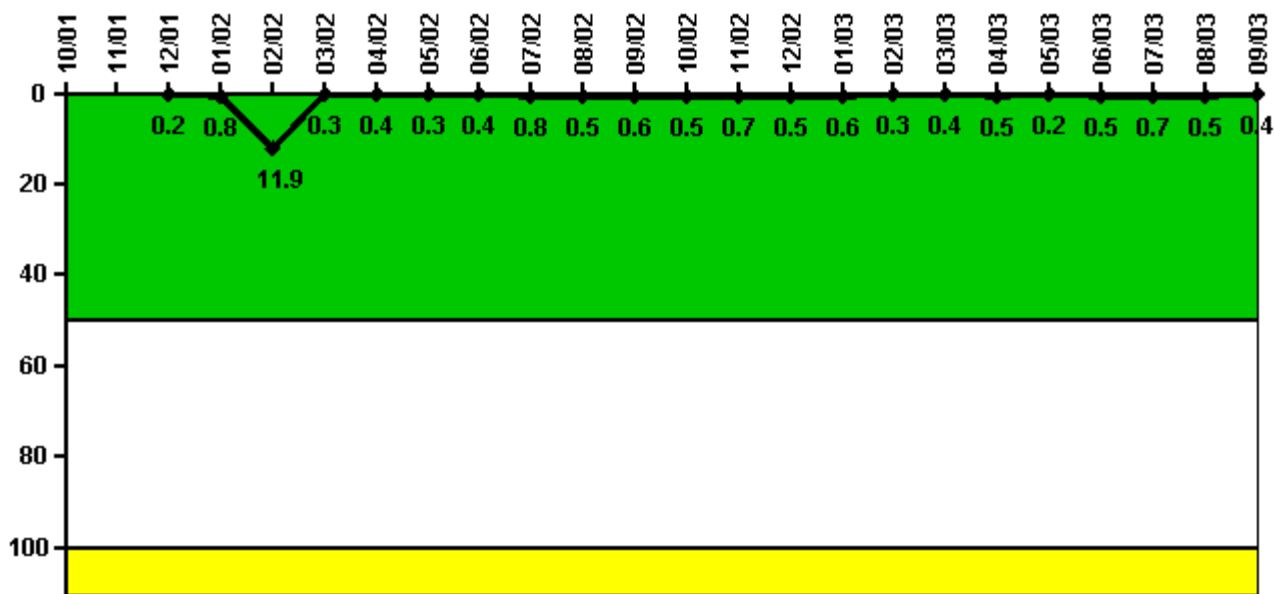
Reactor Coolant System Activity	10/01	11/01	12/01	1/02	2/02	3/02	4/02	5/02	6/02	7/02	8/02	9/02
Maximum activity	N/A	N/A	0	0.000126	0.000197	0.000185	0.000241	0.000157	0.000212	0.000160	0.000165	0.000355
Technical specification limit	1.0	1.0	1.0	1.0	1.0	1.0	1.0	1.0	1.0	1.0	1.0	1.0
Indicator value	N/A	N/A	0	0	0	0	0	0	0	0	0	0

Reactor Coolant System Activity	10/02	11/02	12/02	1/03	2/03	3/03	4/03	5/03	6/03	7/03	8/03	9/03
Maximum activity	0.000189	0.000181	0.000187	0.000194	0.000199	0.000732	0.000208	0.000072	0.000086	0.000092	0.000103	0.000100
Technical specification limit	1.0	1.0	1.0	1.0	1.0	1.0	1.0	1.0	1.0	1.0	1.0	1.0
Indicator value	0	0	0	0	0	0.1	0	0	0	0	0	0

Licensee Comments: none

### Reactor Coolant System Leakage



Thresholds: White > 50.0 Yellow > 100.0

#### Notes

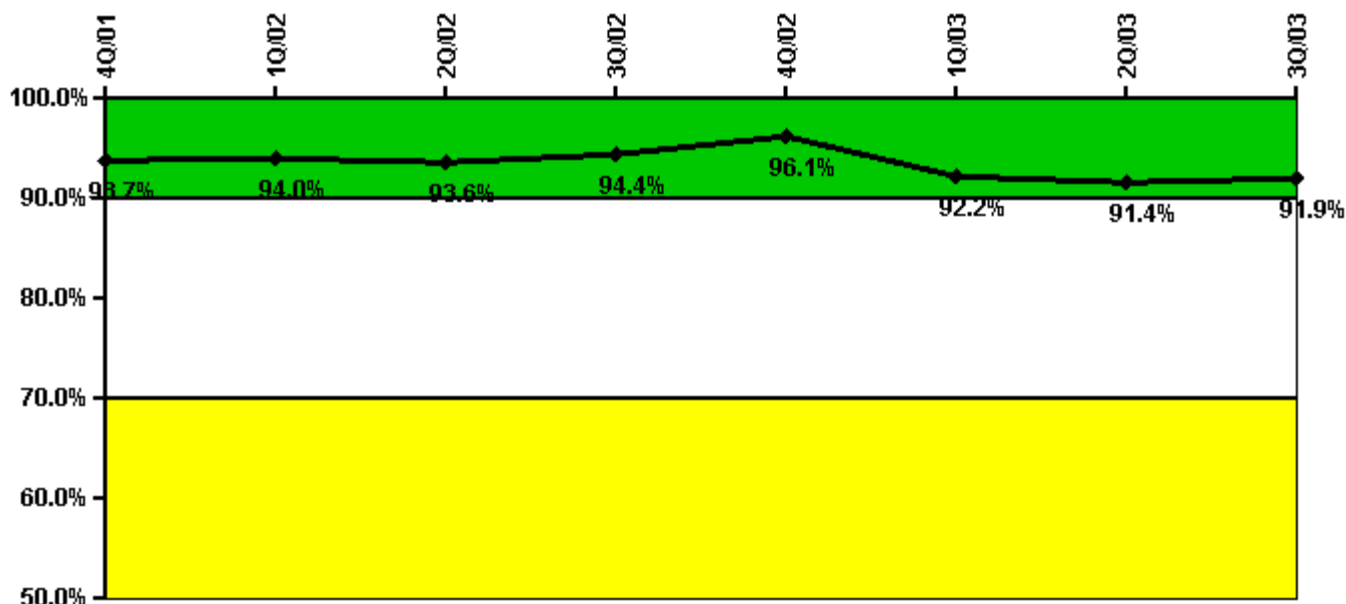
Reactor Coolant System Leakage	10/01	11/01	12/01	1/02	2/02	3/02	4/02	5/02	6/02	7/02	8/02	9/02
Maximum leakage	N/A	N/A	0.020	0.080	1.190	0.030	0.040	0.030	0.040	0.080	0.050	0.060
Technical specification limit	10.0	10.0	10.0	10.0	10.0	10.0	10.0	10.0	10.0	10.0	10.0	10.0
Indicator value	N/A	N/A	0.2	0.8	11.9	0.3	0.4	0.3	0.4	0.8	0.5	0.6

Reactor Coolant System Leakage	10/02	11/02	12/02	1/03	2/03	3/03	4/03	5/03	6/03	7/03	8/03	9/03
Maximum leakage	0.050	0.070	0.050	0.060	0.030	0.040	0.050	0.020	0.050	0.070	0.050	0.040
Technical specification limit	10.0	10.0	10.0	10.0	10.0	10.0	10.0	10.0	10.0	10.0	10.0	10.0
Indicator value	0.5	0.7	0.5	0.6	0.3	0.4	0.5	0.2	0.5	0.7	0.5	0.4

Licensee Comments: none

### Drill/Exercise Performance



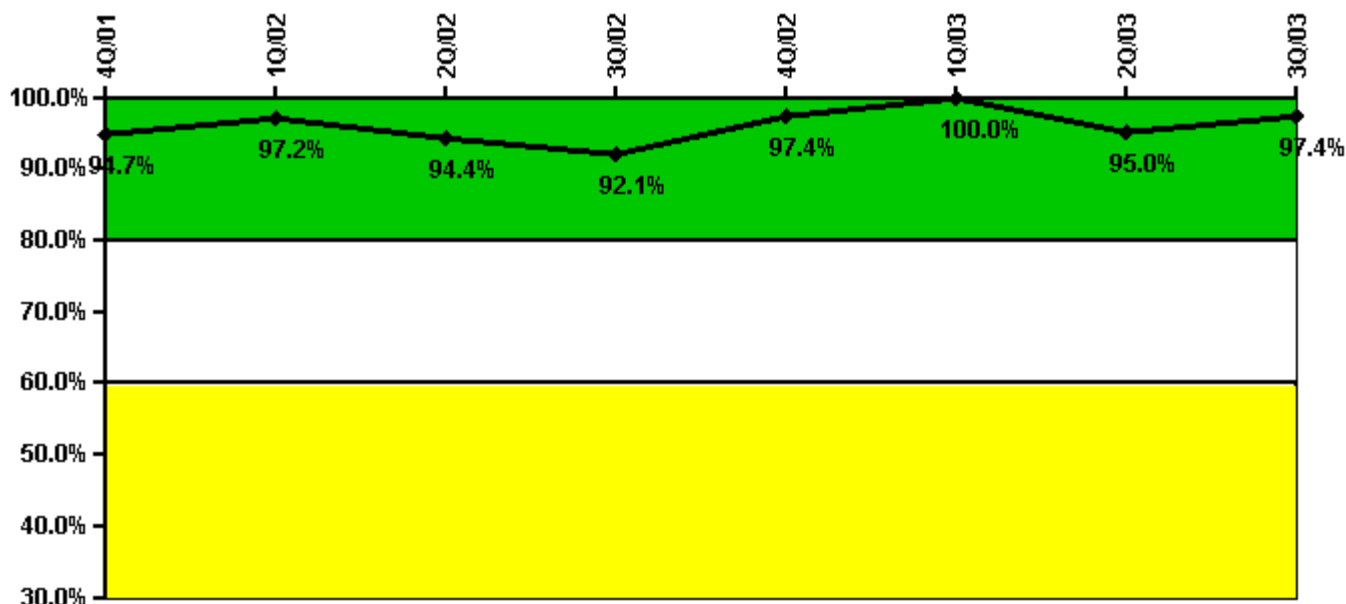
Thresholds: White < 90.0% Yellow < 70.0%

#### Notes

Drill/Exercise Performance	4Q/01	1Q/02	2Q/02	3Q/02	4Q/02	1Q/03	2Q/03	3Q/03
Successful opportunities	2.0	52.0	10.0	18.0	26.0	63.0	37.0	20.0
Total opportunities	2.0	57.0	10.0	18.0	28.0	73.0	40.0	20.0
Indicator value	93.7%	94.0%	93.6%	94.4%	96.1%	92.2%	91.4%	91.9%

Licensee Comments: none

### ERO Drill Participation



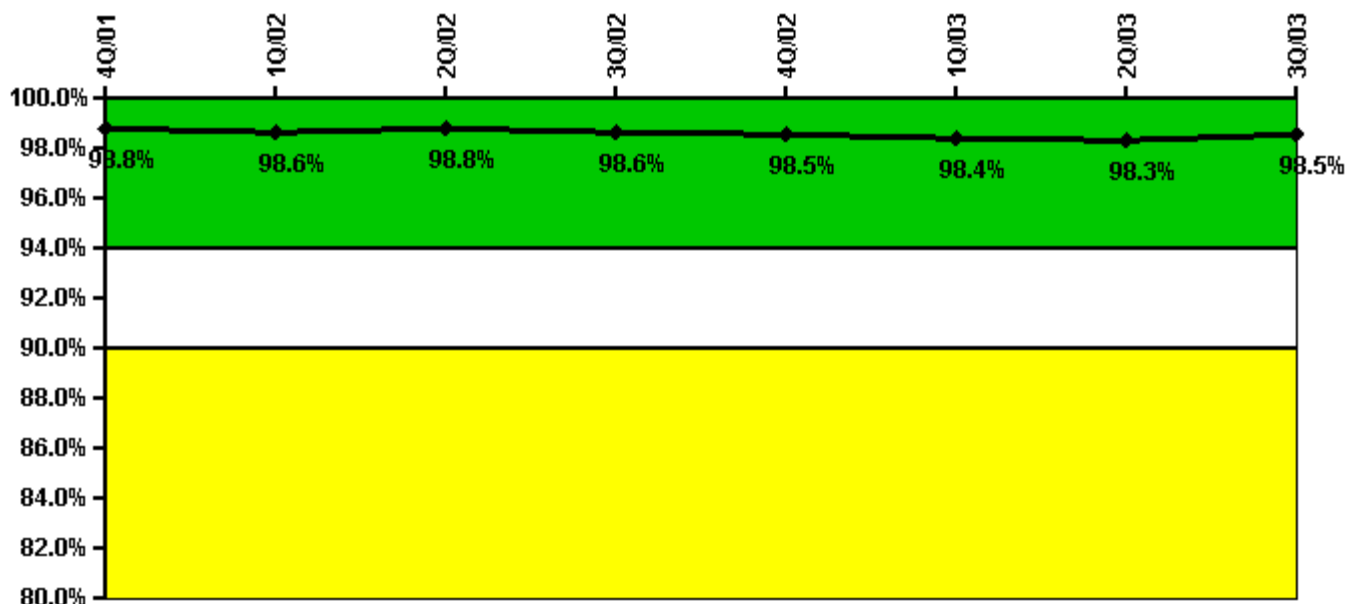
Thresholds: White < 80.0% Yellow < 60.0%

#### Notes

ERO Drill Participation	4Q/01	1Q/02	2Q/02	3Q/02	4Q/02	1Q/03	2Q/03	3Q/03
Participating Key personnel	36.0	35.0	34.0	35.0	38.0	37.0	38.0	38.0
Total Key personnel	38.0	36.0	36.0	38.0	39.0	37.0	40.0	39.0
Indicator value	94.7%	97.2%	94.4%	92.1%	97.4%	100.0%	95.0%	97.4%

Licensee Comments: none

### Alert & Notification System



Thresholds: White < 94.0% Yellow < 90.0%

#### Notes

Alert & Notification System	4Q/01	1Q/02	2Q/02	3Q/02	4Q/02	1Q/03	2Q/03	3Q/03
Successful siren-tests	682	642	564	708	640	558	643	633
Total sirens-tests	689	648	567	729	648	567	648	648
Indicator value	98.8%	98.6%	98.8%	98.6%	98.5%	98.4%	98.3%	98.5%

Licensee Comments: none

### Occupational Exposure Control Effectiveness



Thresholds: White > 2.0 Yellow > 5.0

#### Notes

Occupational Exposure Control Effectiveness	4Q/01	1Q/02	2Q/02	3Q/02	4Q/02	1Q/03	2Q/03	3Q/03
High radiation area occurrences	0	0	0	0	0	0	0	0
Very high radiation area occurrences	0	0	0	0	0	0	0	0
Unintended exposure occurrences	0	0	0	0	0	0	0	0
Indicator value	0	0	0	0	0	0	0	0

Licensee Comments: none

### RETS/ODCM Radiological Effluent



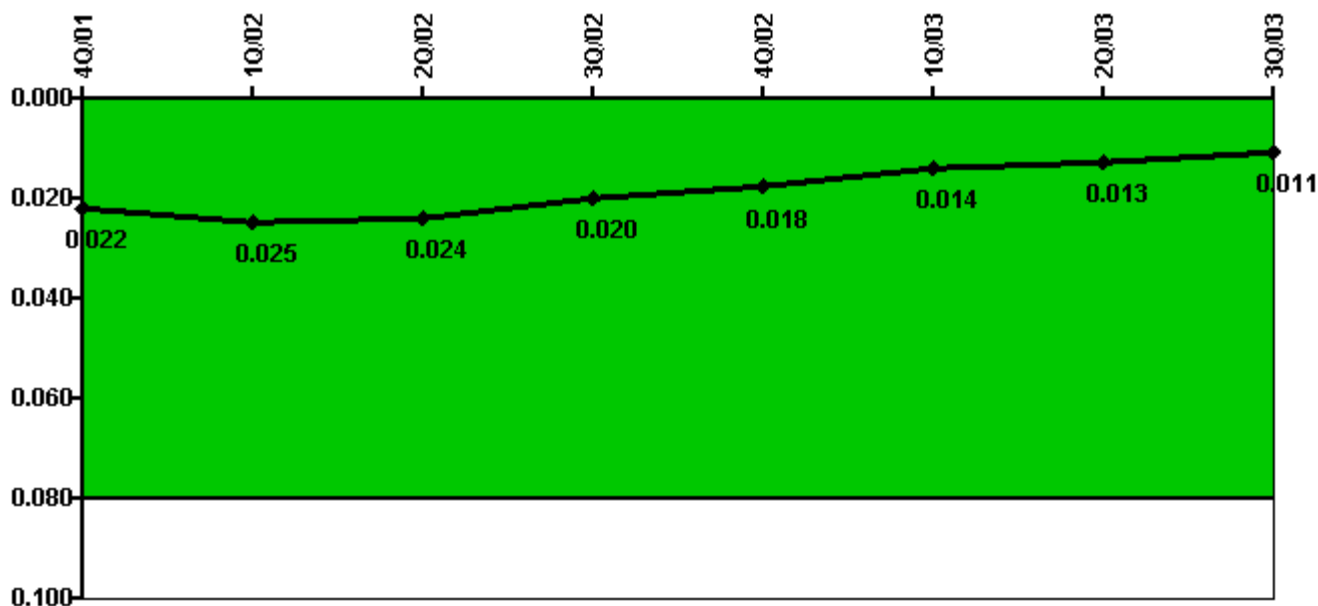
Thresholds: White > 1.0 Yellow > 3.0

#### Notes

RETS/ODCM Radiological Effluent	4Q/01	1Q/02	2Q/02	3Q/02	4Q/02	1Q/03	2Q/03	3Q/03
RETS/ODCM occurrences	0	0	0	0	0	0	0	0
Indicator value	0	0	0	0	0	0	0	0

Licensee Comments: none

### Protected Area Security Performance Index



Thresholds: White > 0.080

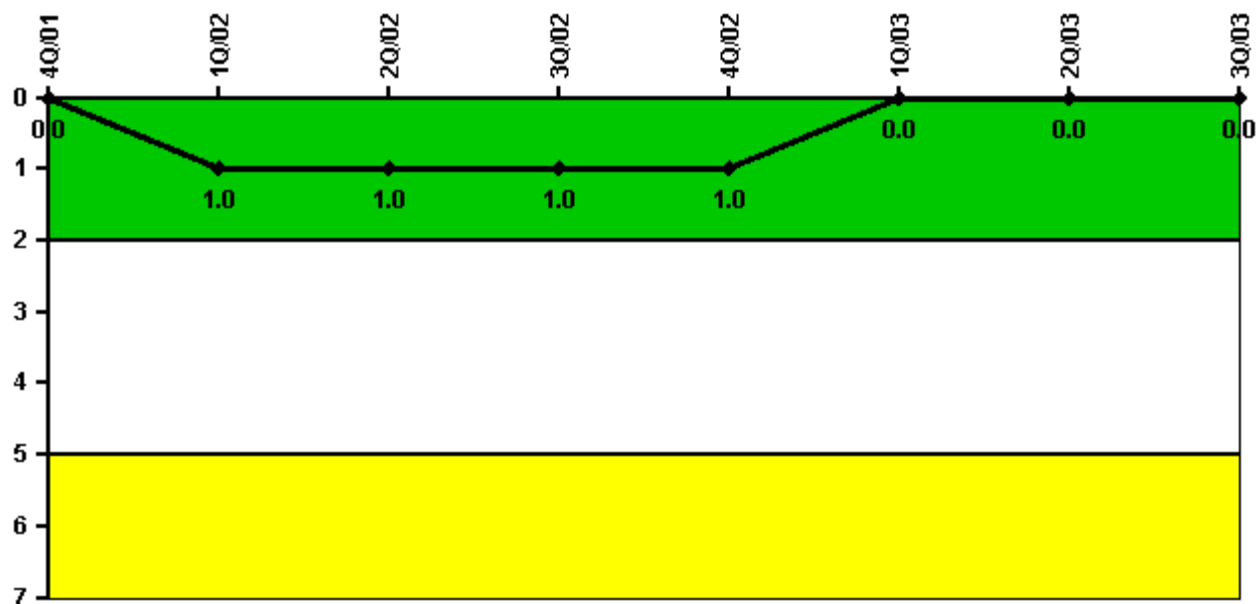
#### Notes

Protected Area Security Performance Index	4Q/01	1Q/02	2Q/02	3Q/02	4Q/02	1Q/03	2Q/03	3Q/03
IDS compensatory hours	250.40	353.08	184.08	229.30	133.90	77.00	144.61	127.39
CCTV compensatory hours	0	0	3.1	0	5.3	18.8	0	0
IDS normalization factor	2.85	2.85	2.85	2.85	2.85	2.85	2.85	2.85
CCTV normalization factor	1.4	1.4	1.4	1.4	1.4	1.4	1.4	1.4
Index Value	0.022	0.025	0.024	0.020	0.018	0.014	0.013	0.011

Licensee Comments: none



### Personnel Screening Program



Thresholds: White > 2.0 Yellow > 5.0

#### Notes

Personnel Screening Program	4Q/01	1Q/02	2Q/02	3Q/02	4Q/02	1Q/03	2Q/03	3Q/03
Program failures	0	1	0	0	0	0	0	0
Indicator value	0	1	1	1	1	0	0	0

Licensee Comments: none

### FFD/Personnel Reliability



Thresholds: White > 2.0 Yellow > 5.0

#### Notes

FFD/Personnel Reliability	4Q/01	1Q/02	2Q/02	3Q/02	4Q/02	1Q/03	2Q/03	3Q/03
Program Failures	0	0	0	0	0	0	0	0
Indicator value	0	0	0	0	0	0	0	0

Licensee Comments: none

▲ [PI Summary](#) | [Inspection Findings Summary](#) | [Reactor Oversight Process](#)

Last Modified: October 22, 2003