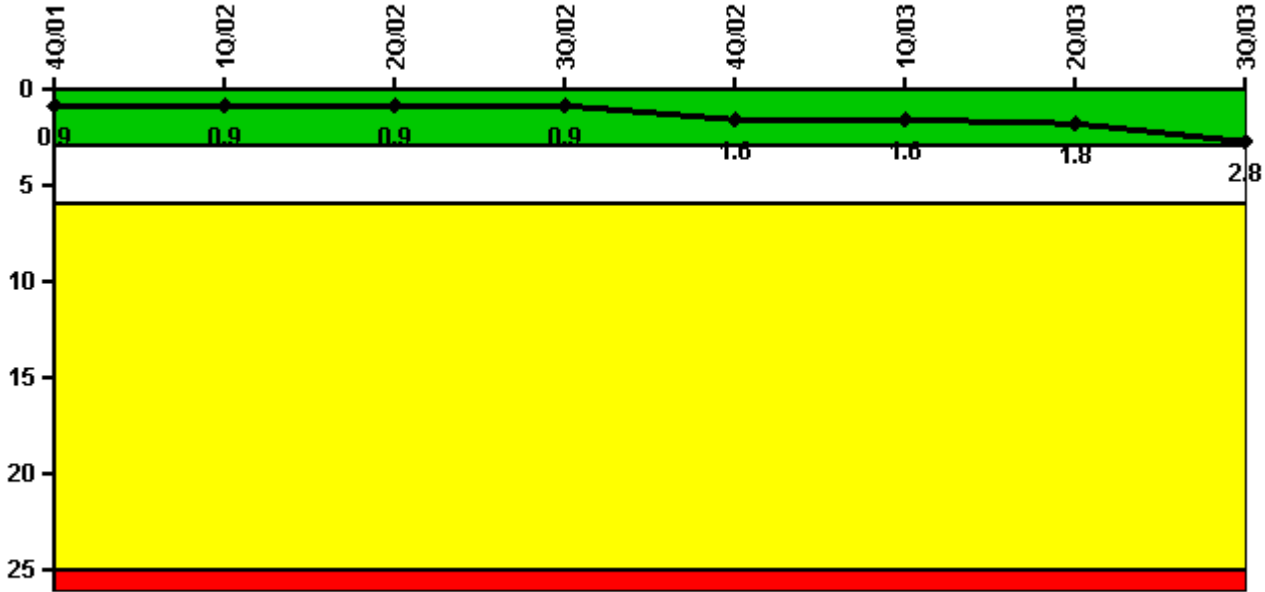


# Fermi 2

## 3Q/2003 Performance Indicators

Licensee's General Comments: none

### Unplanned Scrams per 7000 Critical Hrs



Thresholds: White > 3.0 Yellow > 6.0 Red > 25.0

### Notes

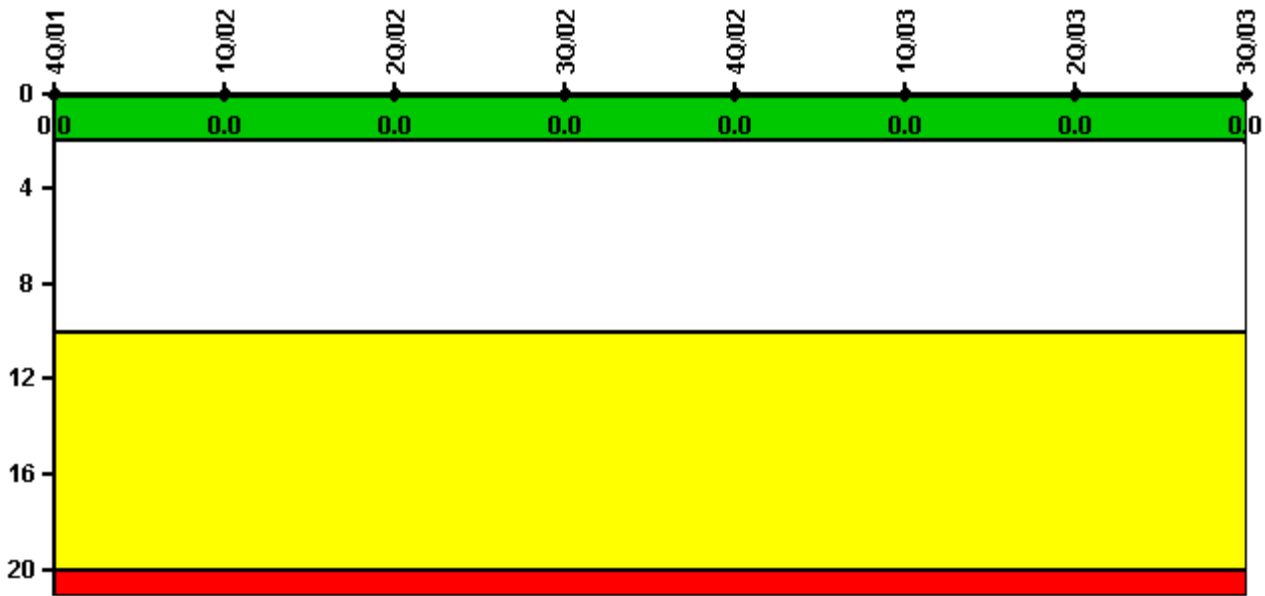
Unplanned Scrams per 7000 Critical Hrs	4Q/01	1Q/02	2Q/02	3Q/02	4Q/02	1Q/03	2Q/03	3Q/03
Unplanned scrams	1.0	0	0	0	2.0	0	0	1.0
Critical hours	1446.5	2160.0	2183.0	2208.0	2094.9	2086.6	1307.5	2010.5
Indicator value	0.9	0.9	0.9	0.9	1.6	1.6	1.8	2.8

Licensee Comments:

3Q/03: Turbine trip and automatic reactor scram due to regional transmission system failure on 8/14/2003.

3Q/03: Turbine trip and automatic reactor scram due to regional transmission system failure on 8/14/2003.

### Scrams with Loss of Normal Heat Removal



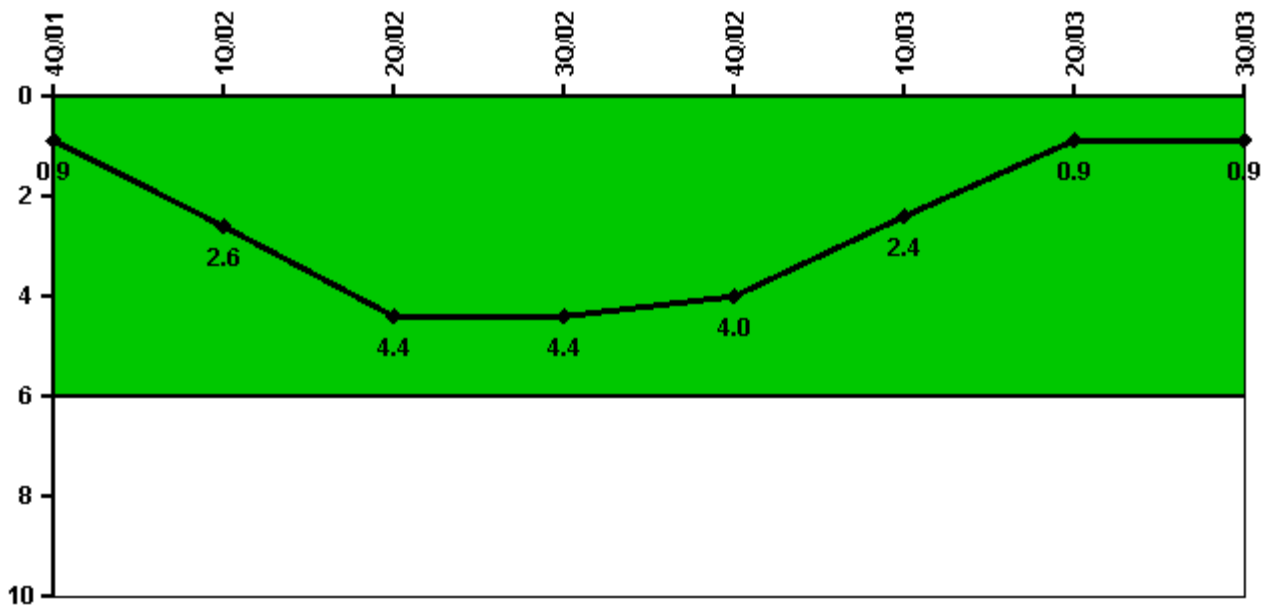
Thresholds: White > 2.0 Yellow > 10.0 Red > 20.0

#### Notes

Scrams with Loss of Normal Heat Removal	4Q/01	1Q/02	2Q/02	3Q/02	4Q/02	1Q/03	2Q/03	3Q/03
Scrams	0	0	0	0	0	0	0	0
Indicator value	0	0	0	0	0	0	0	0

Licensee Comments: none

### Unplanned Power Changes per 7000 Critical Hrs



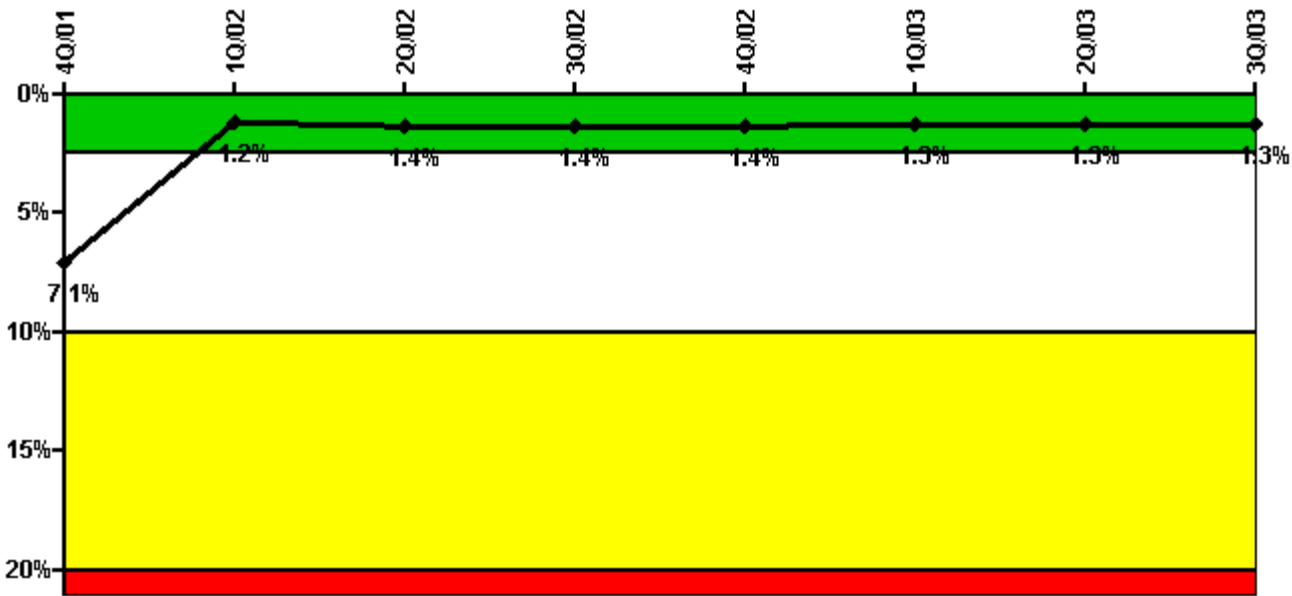
Thresholds: White > 6.0

#### Notes

Unplanned Power Changes per 7000 Critical Hrs	4Q/01	1Q/02	2Q/02	3Q/02	4Q/02	1Q/03	2Q/03	3Q/03
Unplanned power changes	0	3.0	2.0	0	0	1.0	0	0
Critical hours	1446.5	2160.0	2183.0	2208.0	2094.9	2086.6	1307.5	2010.5
Indicator value	0.9	2.6	4.4	4.4	4.0	2.4	0.9	0.9

Licensee Comments: none

### Safety System Unavailability, Emergency AC Power, >2EDG



Thresholds: White > 2.5% Yellow > 10.0% Red > 20.0%

#### Notes

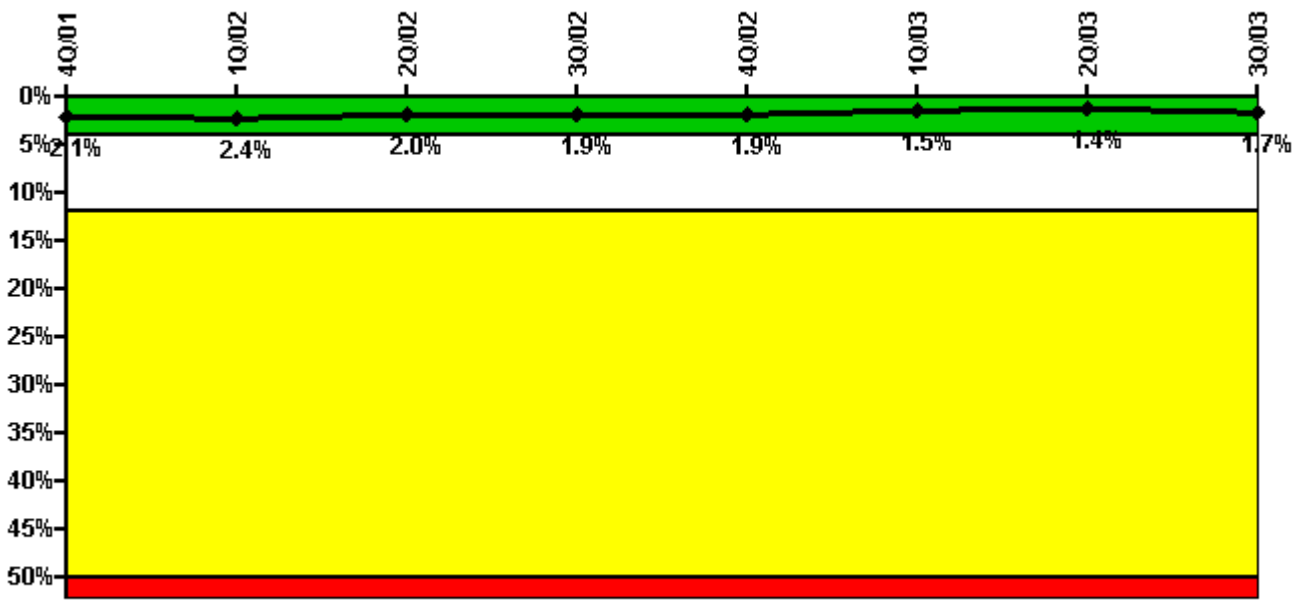
Safety System Unavailability, Emergency AC Power, >2EDG	4Q/01	1Q/02	2Q/02	3Q/02	4Q/02	1Q/03	2Q/03	3Q/03
<b>Train 1</b>								
Planned unavailable hours	6.47	6.00	35.65	52.76	7.04	38.03	8.15	28.15
Unplanned unavailable hours	0	0	0	0	0	29.82	0	0
Fault exposure hours	0	0	0	0	0	0	0	0
Effective Reset hours	700.76	0	0	0	0	0	0	0
Required hours	2209.00	2160.00	2183.00	2208.00	2209.00	2160.00	2183.00	2208.00
<b>Train 2</b>								
Planned unavailable hours	11.61	5.29	145.44	11.37	16.53	17.09	3.88	5.12
Unplanned unavailable hours	0	0	0	0	26.40	0	0	17.43
Fault exposure hours	0	0	0	0	0	0	0	0
Effective Reset hours	0	0	0	0	0	0	0	0
Required hours	2209.00	2160.00	2183.00	2208.00	2209.00	2160.00	2183.00	2208.00
<b>Train 3</b>								
Planned unavailable hours	5.79	5.82	32.67	7.72	6.95	26.45	3.55	6.09
Unplanned unavailable hours	0	0	8.38	1.30	0	0	2.03	0
Fault exposure hours	0	0	0	0	0	0	0	0
Effective Reset hours	0	0	0	0	0	0	0	0
Required hours	2209.00	2160.00	2183.00	2208.00	2209.00	2160.00	2183.00	2208.00
<b>Train 4</b>								
Planned unavailable hours	14.48	18.45	56.16	23.22	7.74	24.71	8.61	8.17
Unplanned unavailable hours	0	2.10	0	3.94	0	0	0	0
Fault exposure hours	0	0	0	0	0	0	0	0
Effective Reset hours	0	6142.70	0	0	0	0	0	0
Required hours	2209.00	2160.00	2183.00	2208.00	2209.00	2160.00	2183.00	2208.00

Indicator value	7.1%	1.2%	1.4%	1.4%	1.4%	1.3%	1.3%	1.3%

Licensee Comments:

3Q/03: EDG 12{Train 2} 237.5 hours of T/2 fault exposure hours due to failed signal generator.

### Safety System Unavailability, High Pressure Injection System (HPCI)



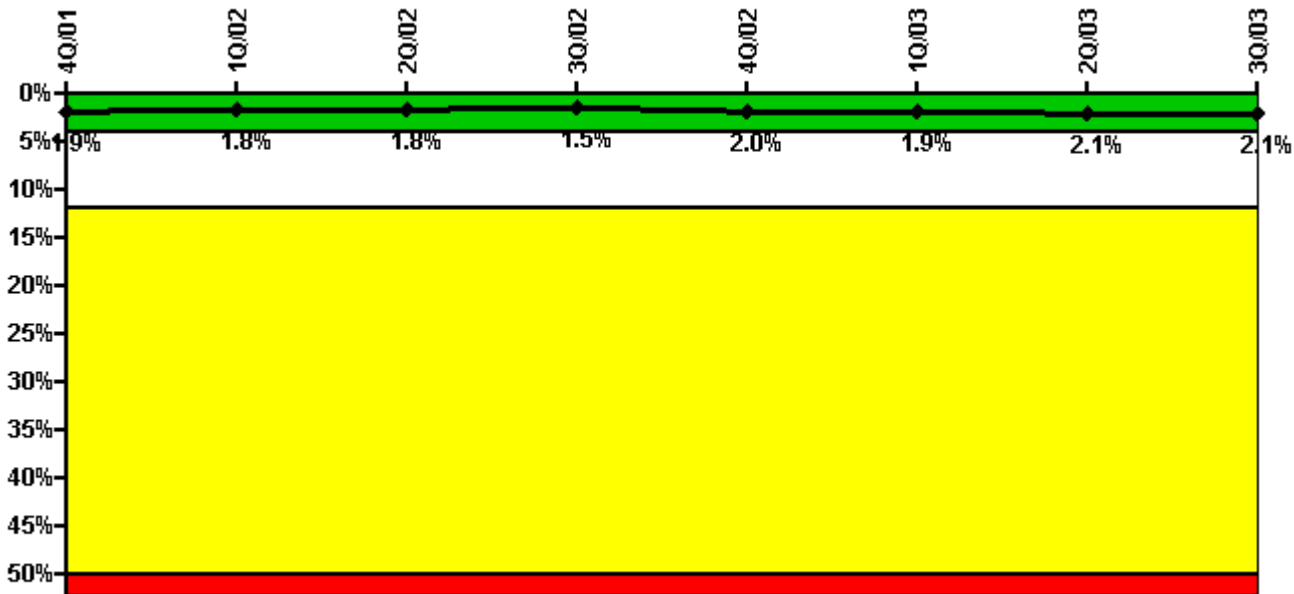
Thresholds: White > 4.0% Yellow > 12.0% Red > 50.0%

### Notes

Safety System Unavailability, High Pressure Injection System (HPCI)	4Q/01	1Q/02	2Q/02	3Q/02	4Q/02	1Q/03	2Q/03	3Q/03
Train 1								
Planned unavailable hours	9.69	85.05	21.45	3.13	2.20	26.08	0	66.32
Unplanned unavailable hours	27.16	15.31	0	0	0	0	0	3.30
Fault exposure hours	0	0	0	0	0	0	0	0
Effective Reset hours	0	0	0	0	0	0	0	0
Required hours	1446.50	2160.00	2183.00	2208.00	2094.90	2086.60	1307.50	2010.50
Indicator value	2.1%	2.4%	2.0%	1.9%	1.9%	1.5%	1.4%	1.7%

Licensee Comments: none

### Safety System Unavailability, Heat Removal System (RCIC)



Thresholds: White > 4.0% Yellow > 12.0% Red > 50.0%

#### Notes

Safety System Unavailability, Heat Removal System (RCIC)	4Q/01	1Q/02	2Q/02	3Q/02	4Q/02	1Q/03	2Q/03	3Q/03
Train 1								
Planned unavailable hours	161.85	37.45	1.98	2.83	127.80	14.21	57.48	7.98
Unplanned unavailable hours	10.35	2.87	0	0	0	0	0	0
Fault exposure hours	0	0	0	0	0	0	0	0
Effective Reset hours	0	0	0	0	0	0	0	0
Required hours	1446.50	2160.00	2183.00	2208.00	2094.90	2086.60	1307.50	2010.50
Indicator value	1.9%	1.8%	1.8%	1.5%	2.0%	1.9%	2.1%	2.1%

Licensee Comments: none

### Safety System Unavailability, Residual Heat Removal System



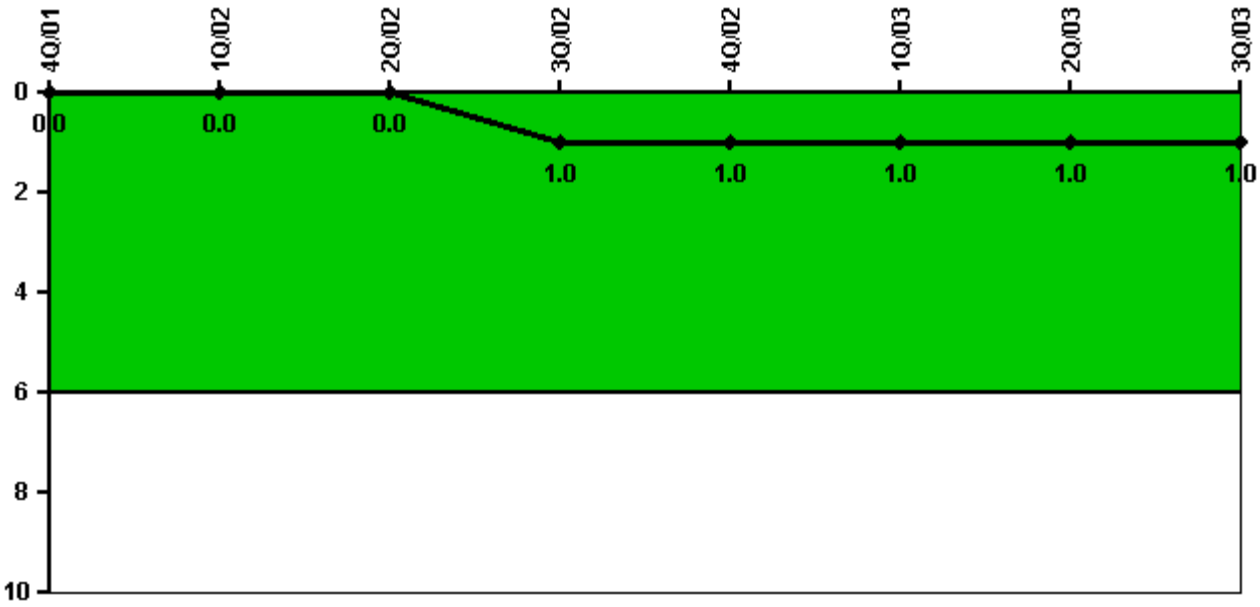
Thresholds: White > 1.5% Yellow > 5.0% Red > 10.0%

Notes

Safety System Unavailability, Residual Heat Removal System	4Q/01	1Q/02	2Q/02	3Q/02	4Q/02	1Q/03	2Q/03	3Q/03
<b>Train 1</b>								
Planned unavailable hours	4.43	2.10	0.67	19.08	3.13	0.88	0	13.76
Unplanned unavailable hours	0	0	0	0	0	0	0	0
Fault exposure hours	0	0	0	0	0	0	0	0
Effective Reset hours	0	0	0	0	0	0	0	0
Required hours	2209.00	2160.00	2183.00	2208.00	2209.00	2160.00	2183.00	2208.00
<b>Train 2</b>								
Planned unavailable hours	0	12.66	17.74	1.20	1.50	9.05	0	8.85
Unplanned unavailable hours	0	0	0	0	0	0	0	0
Fault exposure hours	0	0	0	0	0	0	0	0
Effective Reset hours	0	0	0	0	0	0	0	0
Required hours	2209.00	2160.00	2183.00	2208.00	2209.00	2160.00	2183.00	2208.00
Indicator value	0.7%	0.7%	0.7%	0.7%	0.7%	0.6%	0.5%	0.3%

Licensee Comments: none

### Safety System Functional Failures (BWR)



Thresholds: White > 6.0

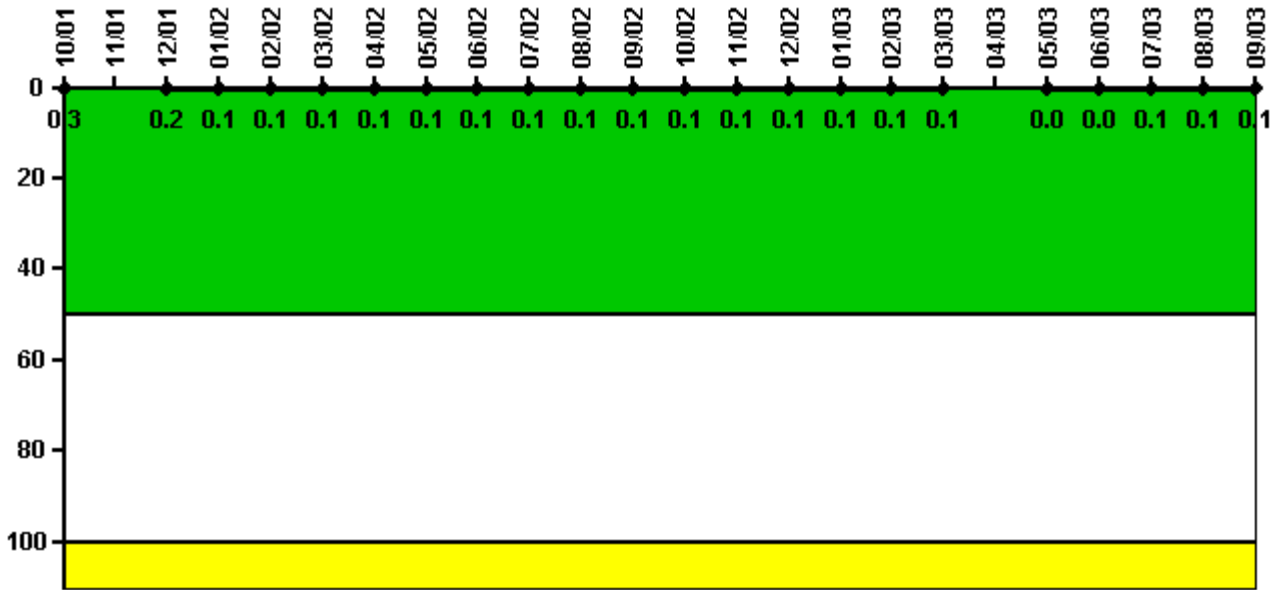
#### Notes

Safety System Functional Failures (BWR)	4Q/01	1Q/02	2Q/02	3Q/02	4Q/02	1Q/03	2Q/03	3Q/03
Safety System Functional Failures	0	0	0	1	0	0	0	1
Indicator value	0	0	0	1	1	1	1	1

Licensee Comments: none



### Reactor Coolant System Activity



Thresholds: White > 50.0 Yellow > 100.0

**Notes**

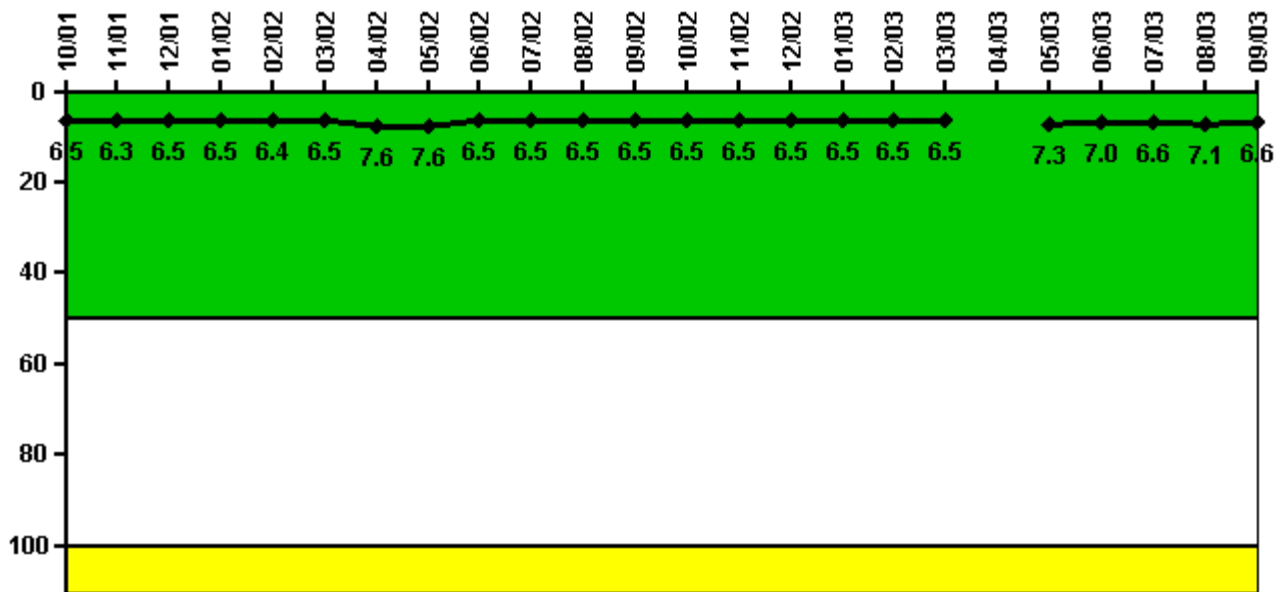
Reactor Coolant System Activity	10/01	11/01	12/01	1/02	2/02	3/02	4/02	5/02	6/02	7/02	8/02	9/02
Maximum activity	0.000641	N/A	0.000373	0.000267	0.000201	0.000291	0.000174	0.000178	0.000198	0.000208	0.000184	0.000196
Technical specification limit	0.2	0.2	0.2	0.2	0.2	0.2	0.2	0.2	0.2	0.2	0.2	0.2
Indicator value	0.3	N/A	0.2	0.1	0.1	0.1	0.1	0.1	0.1	0.1	0.1	0.1

Reactor Coolant System Activity	10/02	11/02	12/02	1/03	2/03	3/03	4/03	5/03	6/03	7/03	8/03	9/03
Maximum activity	0.000173	0.000211	0.000169	0.000144	0.000178	0.000168	N/A	0.000080	0.000084	0.000123	0.000124	0.000135
Technical specification limit	0.2	0.2	0.2	0.2	0.2	0.2	0.2	0.2	0.2	0.2	0.2	0.2
Indicator value	0.1	0.1	0.1	0.1	0.1	0.1	N/A	0	0	0.1	0.1	0.1

Licensee Comments: none

### Reactor Coolant System Leakage



Thresholds: White > 50.0 Yellow > 100.0

**Notes**

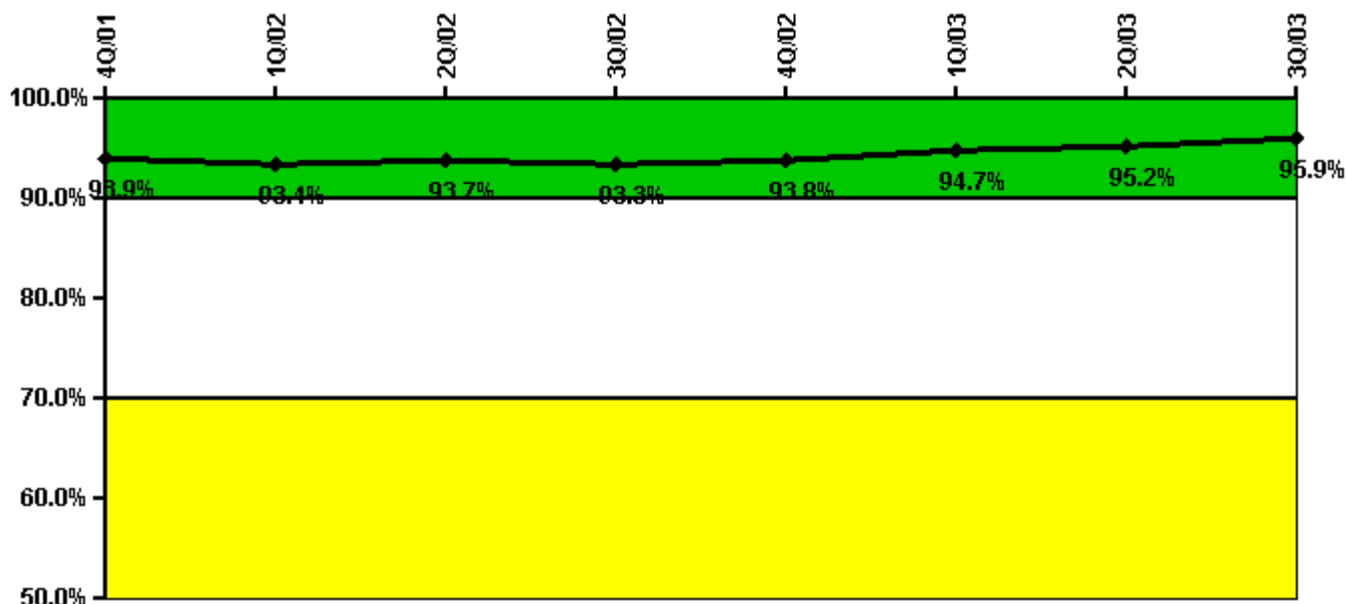
Reactor Coolant System Leakage	10/01	11/01	12/01	1/02	2/02	3/02	4/02	5/02	6/02	7/02	8/02	9/02
Maximum leakage	1.630	1.570	1.630	1.620	1.610	1.630	1.900	1.890	1.630	1.630	1.620	1.630
Technical specification limit	25.0	25.0	25.0	25.0	25.0	25.0	25.0	25.0	25.0	25.0	25.0	25.0
Indicator value	6.5	6.3	6.5	6.5	6.4	6.5	7.6	7.6	6.5	6.5	6.5	6.5

Reactor Coolant System Leakage	10/02	11/02	12/02	1/03	2/03	3/03	4/03	5/03	6/03	7/03	8/03	9/03
Maximum leakage	1.630	1.620	1.620	1.630	1.630	1.630	N/A	1.830	1.750	1.640	1.770	1.650
Technical specification limit	25.0	25.0	25.0	25.0	25.0	25.0	25.0	25.0	25.0	25.0	25.0	25.0
Indicator value	6.5	6.5	6.5	6.5	6.5	6.5	N/A	7.3	7.0	6.6	7.1	6.6

Licensee Comments: none

### Drill/Exercise Performance



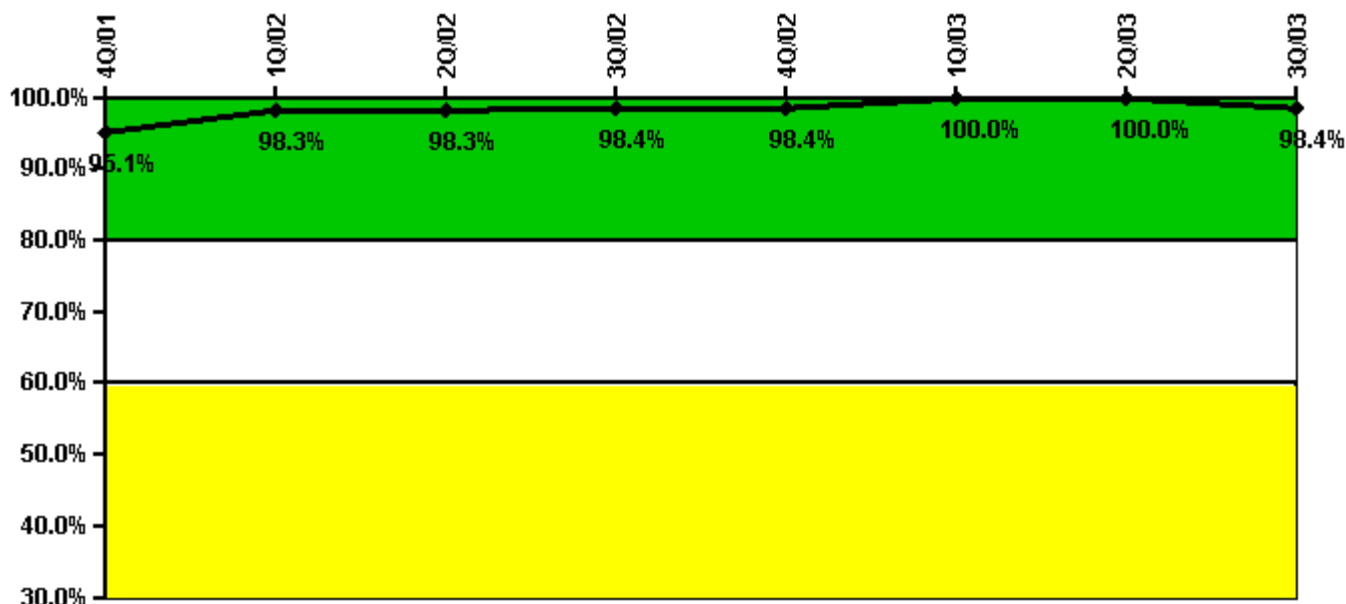
Thresholds: White < 90.0% Yellow < 70.0%

#### Notes

Drill/Exercise Performance	4Q/01	1Q/02	2Q/02	3Q/02	4Q/02	1Q/03	2Q/03	3Q/03
Successful opportunities	0	42.0	51.0	145.0	10.0	64.0	28.0	149.0
Total opportunities	0	46.0	51.0	154.0	10.0	65.0	28.0	156.0
Indicator value	93.9%	93.4%	93.7%	93.3%	93.8%	94.7%	95.2%	95.9%

Licensee Comments: none

### ERO Drill Participation



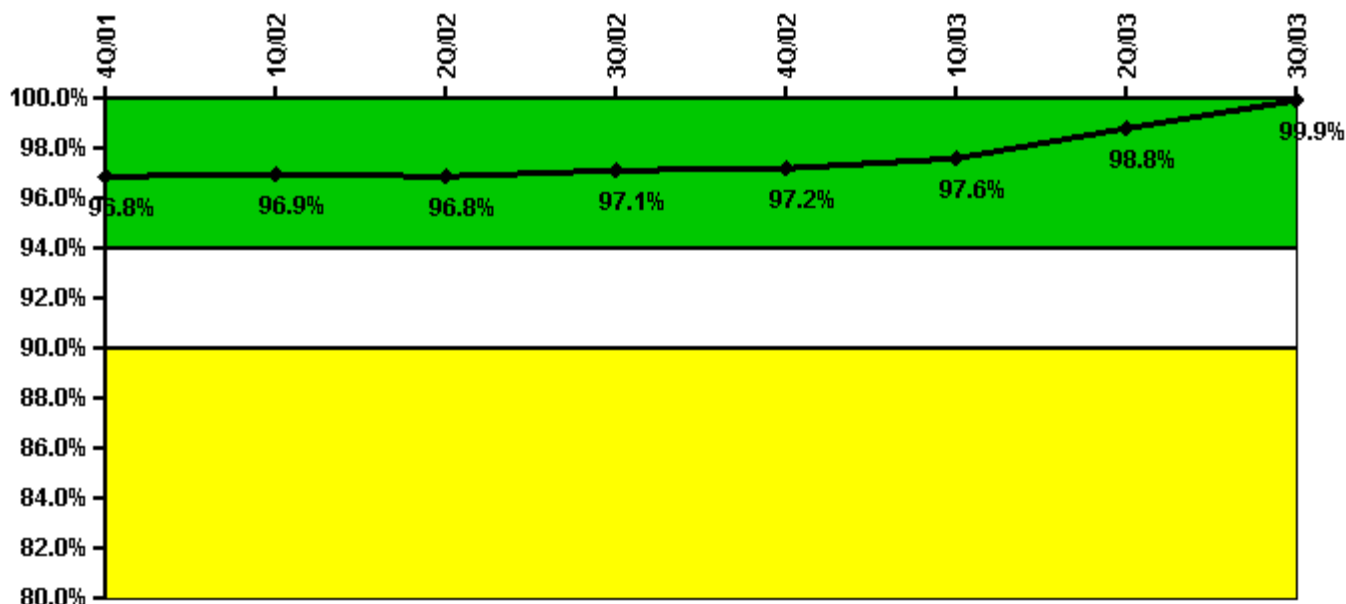
Thresholds: White < 80.0% Yellow < 60.0%

#### Notes

ERO Drill Participation	4Q/01	1Q/02	2Q/02	3Q/02	4Q/02	1Q/03	2Q/03	3Q/03
Participating Key personnel	58.0	59.0	58.0	61.0	60.0	60.0	60.0	63.0
Total Key personnel	61.0	60.0	59.0	62.0	61.0	60.0	60.0	64.0
Indicator value	95.1%	98.3%	98.3%	98.4%	98.4%	100.0%	100.0%	98.4%

Licensee Comments: none

### Alert & Notification System



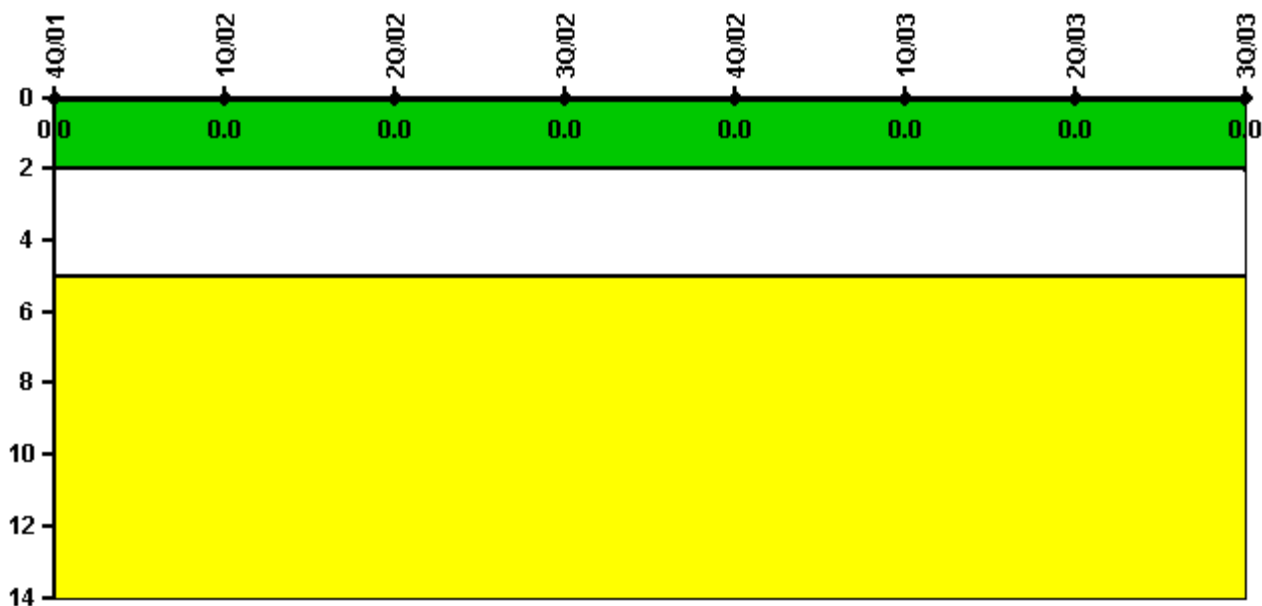
Thresholds: White < 94.0% Yellow < 90.0%

#### Notes

Alert & Notification System	4Q/01	1Q/02	2Q/02	3Q/02	4Q/02	1Q/03	2Q/03	3Q/03
Successful siren-tests	348	344	341	198	181	185	186	186
Total sirens-tests	354	354	354	206	181	186	186	186
Indicator value	96.8%	96.9%	96.8%	97.1%	97.2%	97.6%	98.8%	99.9%

Licensee Comments: none

### Occupational Exposure Control Effectiveness



Thresholds: White > 2.0 Yellow > 5.0

#### Notes

Occupational Exposure Control Effectiveness	4Q/01	1Q/02	2Q/02	3Q/02	4Q/02	1Q/03	2Q/03	3Q/03
High radiation area occurrences	0	0	0	0	0	0	0	0
Very high radiation area occurrences	0	0	0	0	0	0	0	0
Unintended exposure occurrences	0	0	0	0	0	0	0	0
Indicator value	0	0	0	0	0	0	0	0

Licensee Comments: none

### RETS/ODCM Radiological Effluent



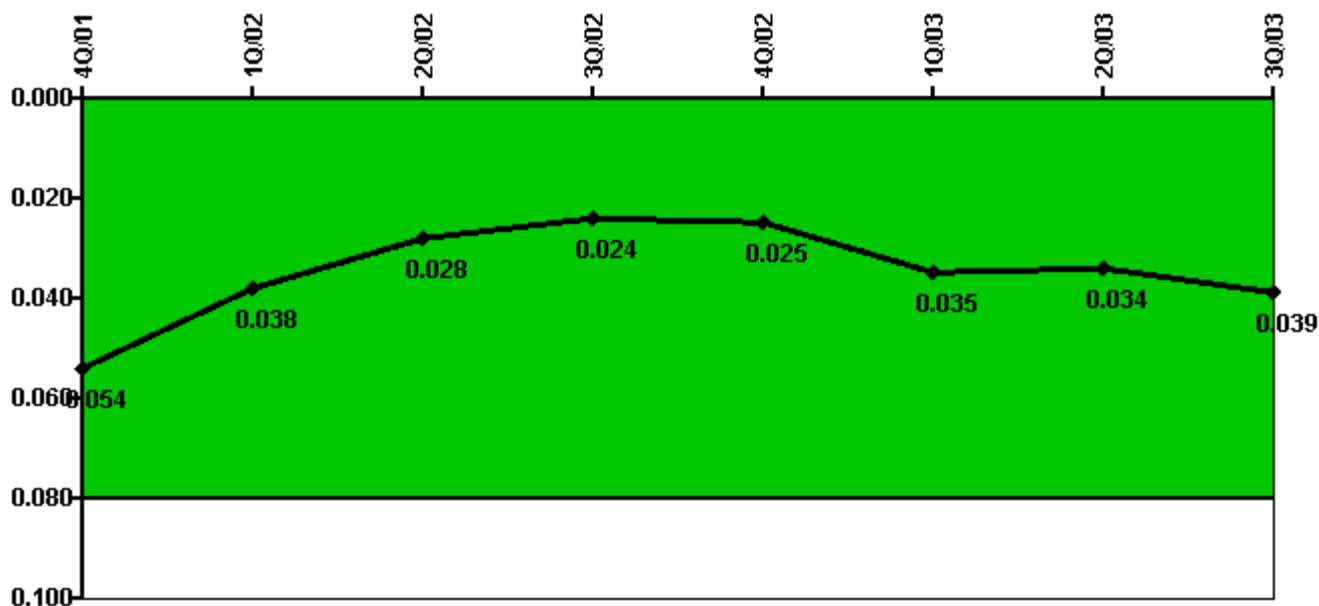
Thresholds: White > 1.0 Yellow > 3.0

#### Notes

RETS/ODCM Radiological Effluent	4Q/01	1Q/02	2Q/02	3Q/02	4Q/02	1Q/03	2Q/03	3Q/03
RETS/ODCM occurrences	0	0	0	0	0	0	0	0
Indicator value	0	0	0	0	0	0	0	0

Licensee Comments: none

### Protected Area Security Performance Index



Thresholds: White > 0.080

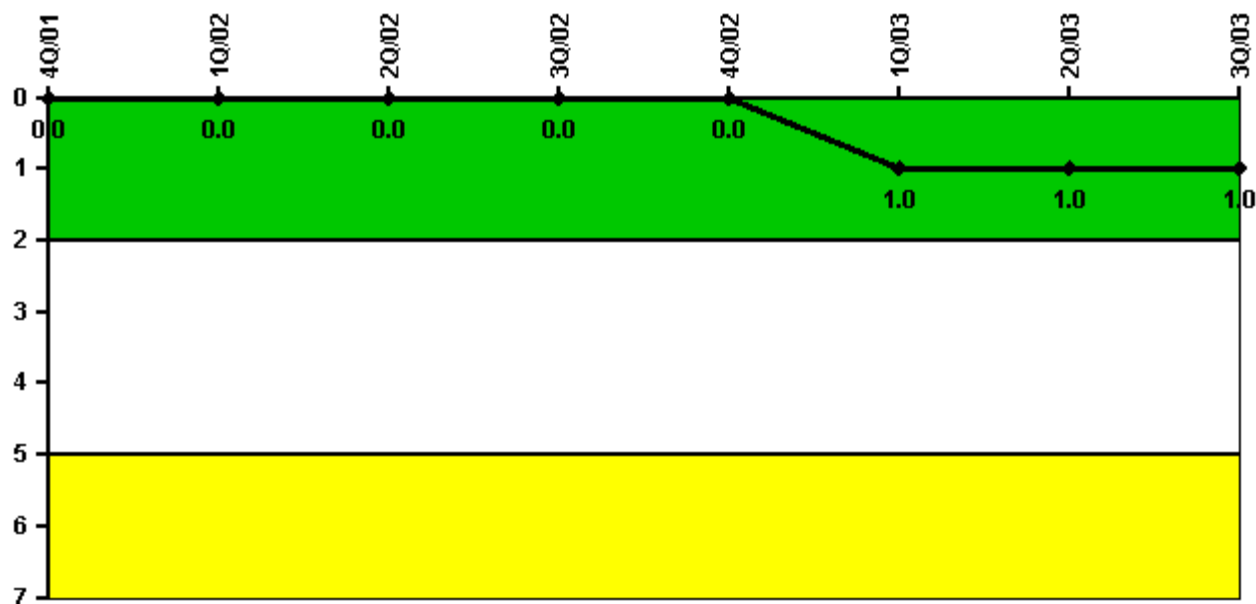
#### Notes

Protected Area Security Performance Index	4Q/01	1Q/02	2Q/02	3Q/02	4Q/02	1Q/03	2Q/03	3Q/03
IDS compensatory hours	197.80	237.63	161.07	142.80	139.82	605.38	135.40	311.73
CCTV compensatory hours	0.5	4.5	18.6	7.9	41.3	0.8	4.9	2.8
IDS normalization factor	1.90	1.90	1.90	1.90	1.90	1.90	1.90	1.90
CCTV normalization factor	1.0	1.0	1.0	1.0	1.0	1.0	1.0	1.0
Index Value	0.054	0.038	0.028	0.024	0.025	0.035	0.034	0.039

Licensee Comments: none



### Personnel Screening Program



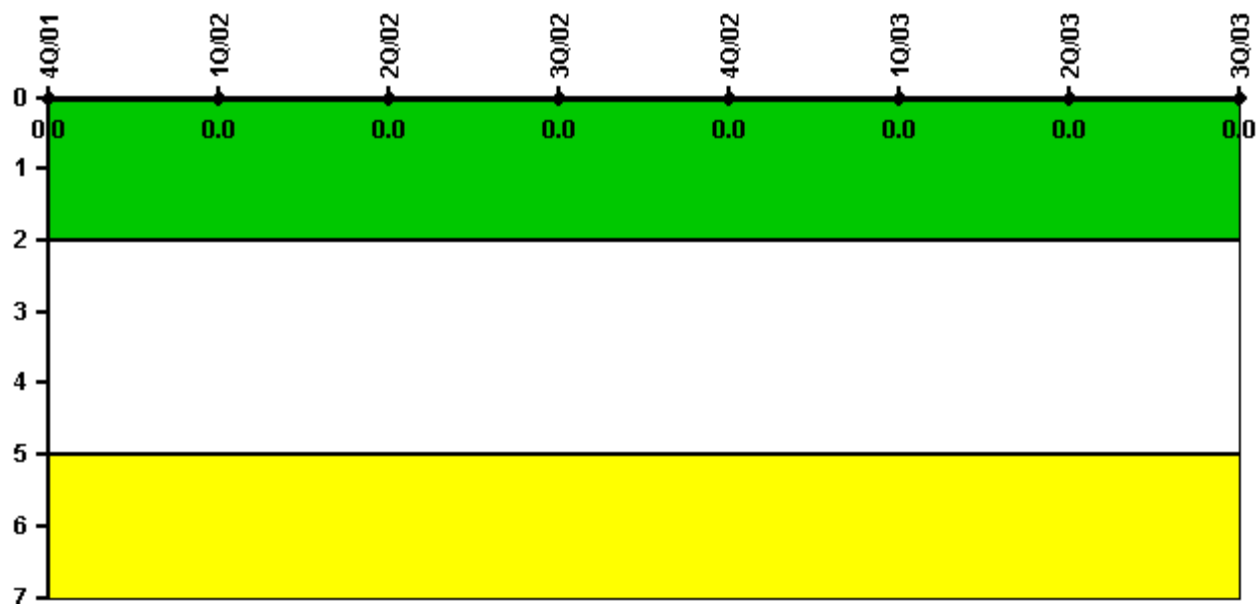
Thresholds: White > 2.0 Yellow > 5.0

#### Notes

Personnel Screening Program	4Q/01	1Q/02	2Q/02	3Q/02	4Q/02	1Q/03	2Q/03	3Q/03
Program failures	0	0	0	0	0	1	0	0
Indicator value	0	0	0	0	0	1	1	1

Licensee Comments: none

### FFD/Personnel Reliability



Thresholds: White > 2.0 Yellow > 5.0

#### Notes

FFD/Personnel Reliability	4Q/01	1Q/02	2Q/02	3Q/02	4Q/02	1Q/03	2Q/03	3Q/03
Program Failures	0	0	0	0	0	0	0	0
Indicator value	0	0	0	0	0	0	0	0

Licensee Comments: none

▲ [PI Summary](#) | [Inspection Findings Summary](#) | [Reactor Oversight Process](#)

Last Modified: October 28, 2003