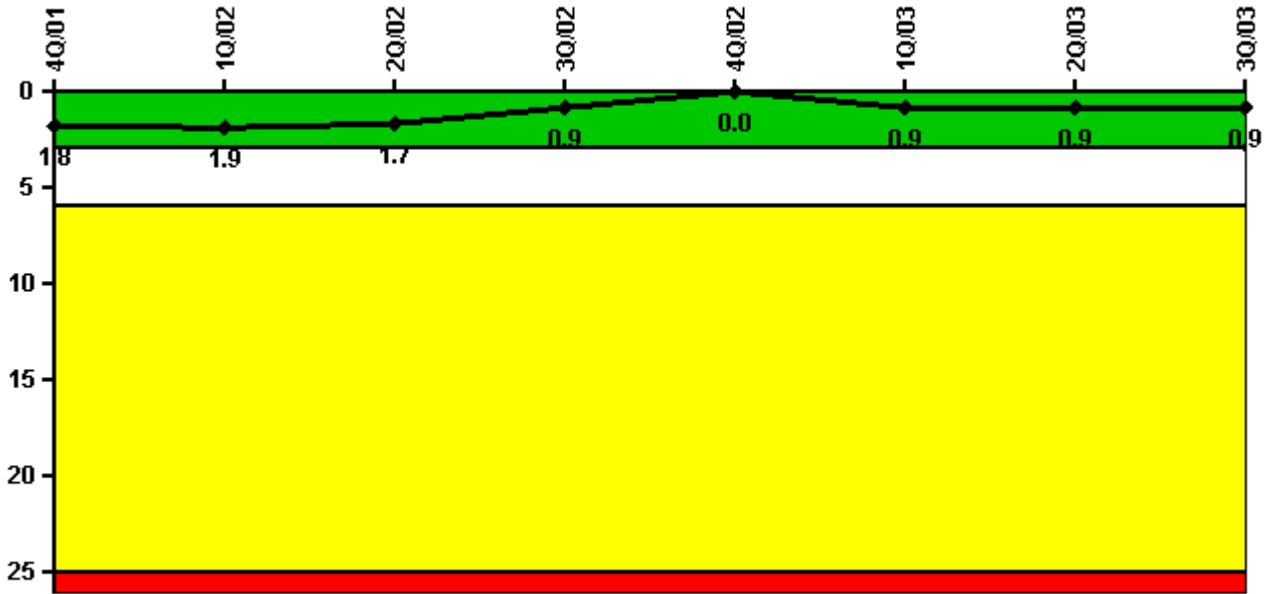


Duane Arnold

3Q/2003 Performance Indicators

Licensee's General Comments: Wrong comment submitted for MS03; moved to MS04.

Unplanned Scrams per 7000 Critical Hrs



Thresholds: White > 3.0 Yellow > 6.0 Red > 25.0

Notes

Unplanned Scrams per 7000 Critical Hrs	4Q/01	1Q/02	2Q/02	3Q/02	4Q/02	1Q/03	2Q/03	3Q/03
Unplanned scrams	1.0	0	0	0	0	1.0	0	0
Critical hours	2083.0	2054.0	2105.7	1896.5	2209.0	1649.0	1758.3	2208.0
Indicator value	1.8	1.9	1.7	0.9	0	0.9	0.9	0.9

Licensee Comments: none

Scrams with Loss of Normal Heat Removal



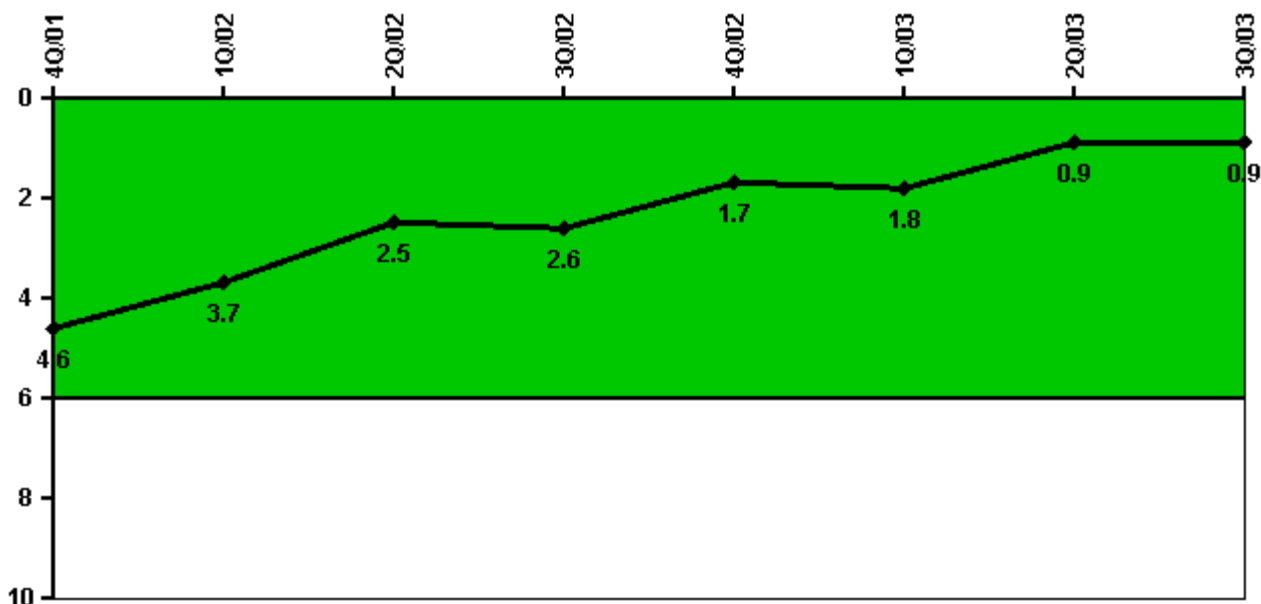
Thresholds: White > 2.0 Yellow > 10.0 Red > 20.0

Notes

Scrams with Loss of Normal Heat Removal	4Q/01	1Q/02	2Q/02	3Q/02	4Q/02	1Q/03	2Q/03	3Q/03
Scrams	0	0	0	0	0	0	0	0
Indicator value	0	0	0	0	0	0	0	0

Licensee Comments: none

Unplanned Power Changes per 7000 Critical Hrs



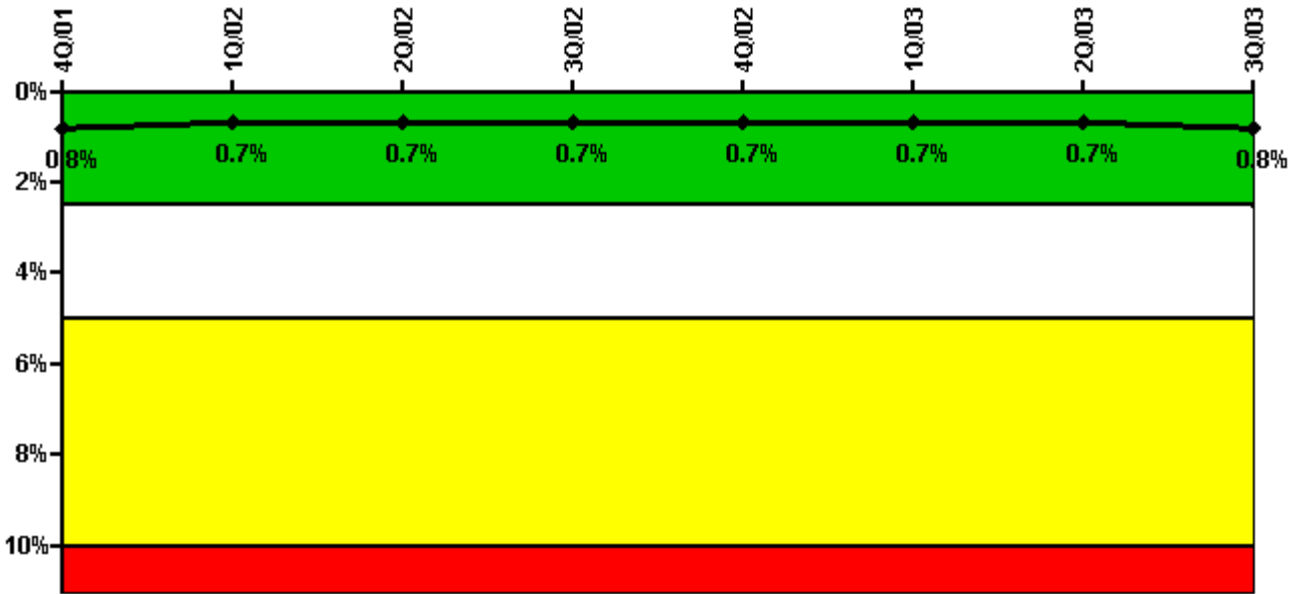
Thresholds: White > 6.0

Notes

Unplanned Power Changes per 7000 Critical Hrs	4Q/01	1Q/02	2Q/02	3Q/02	4Q/02	1Q/03	2Q/03	3Q/03
Unplanned power changes	1.0	0	1.0	1.0	0	0	0	1.0
Critical hours	2083.0	2054.0	2105.7	1896.5	2209.0	1649.0	1758.3	2208.0
Indicator value	4.6	3.7	2.5	2.6	1.7	1.8	0.9	0.9

Licensee Comments: none

Safety System Unavailability, Emergency AC Power



Thresholds: White > 2.5% Yellow > 5.0% Red > 10.0%

Notes

Safety System Unavailability, Emergency AC Power	4Q/01	1Q/02	2Q/02	3Q/02	4Q/02	1Q/03	2Q/03	3Q/03
Train 1								
Planned unavailable hours	6.80	10.92	10.18	11.95	10.88	28.38	11.91	15.10
Unplanned unavailable hours	0	0	0	0	0	0	4.38	0
Fault exposure hours	0	0	0	0	0	0	0	0
Effective Reset hours	0	0	0	0	0	0	0	0
Required hours	2209.00	2160.00	2183.00	2208.00	2209.00	2160.00	2183.00	2208.00
Train 2								
Planned unavailable hours	10.75	10.97	12.21	10.85	10.80	10.22	22.45	16.33
Unplanned unavailable hours	0	0	55.81	0	0	0	0	0
Fault exposure hours	0	0	0	0	0	0	0	0
Effective Reset hours	0	0	0	0	0	0	0	0
Required hours	2209.00	2160.00	2183.00	2208.00	2209.00	2160.00	2034.47	2208.00
Indicator value	0.8%	0.7%	0.7%	0.7%	0.7%	0.7%	0.7%	0.8%

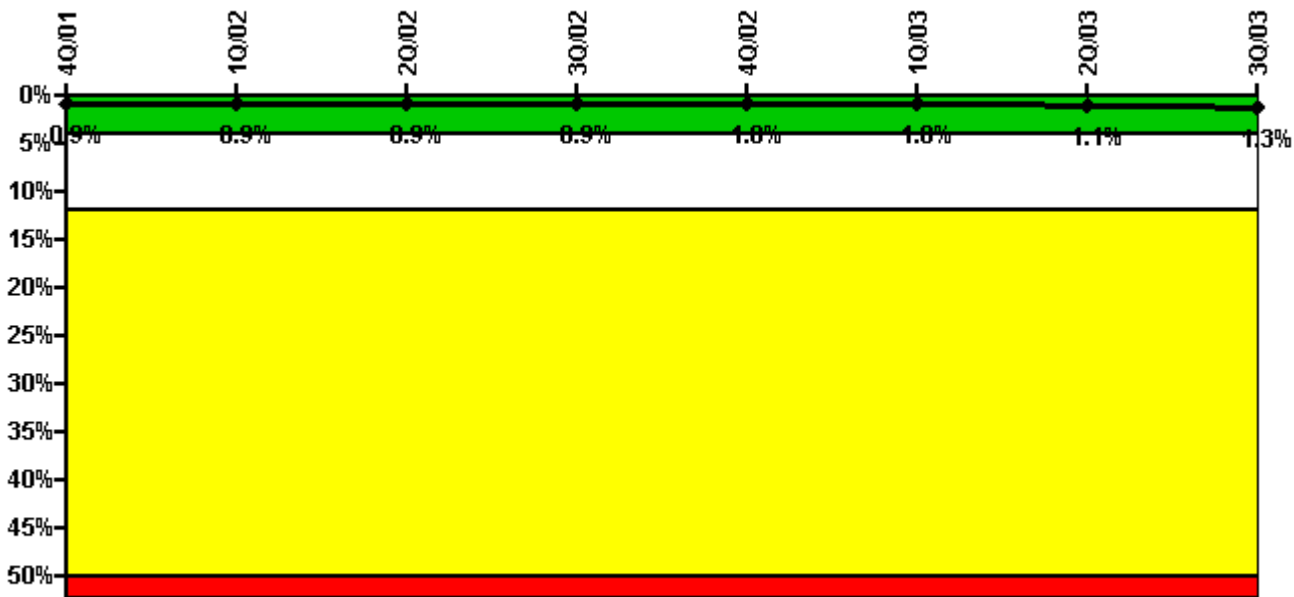
Licensee Comments:

3Q/03: Engineering analysis for unavailability associated with a 2Q2003 support system unavailability issue is ongoing. This analysis is evaluating the effect of actual ambient conditions and will be completed within thirty days. Additionally, an FAQ regarding the operational response to mitigate the effect of this issue will be submitted within fourteen days.

3Q/03: Engineering analysis for unavailability associated with a 2Q2003 support system unavailability issue is ongoing. This analysis is evaluating the effect of actual ambient conditions and will be completed within thirty days. Additionally, an FAQ regarding the operational response to mitigate the effect of this issue will be submitted

within fourteen days.

Safety System Unavailability, High Pressure Injection System (HPCI)



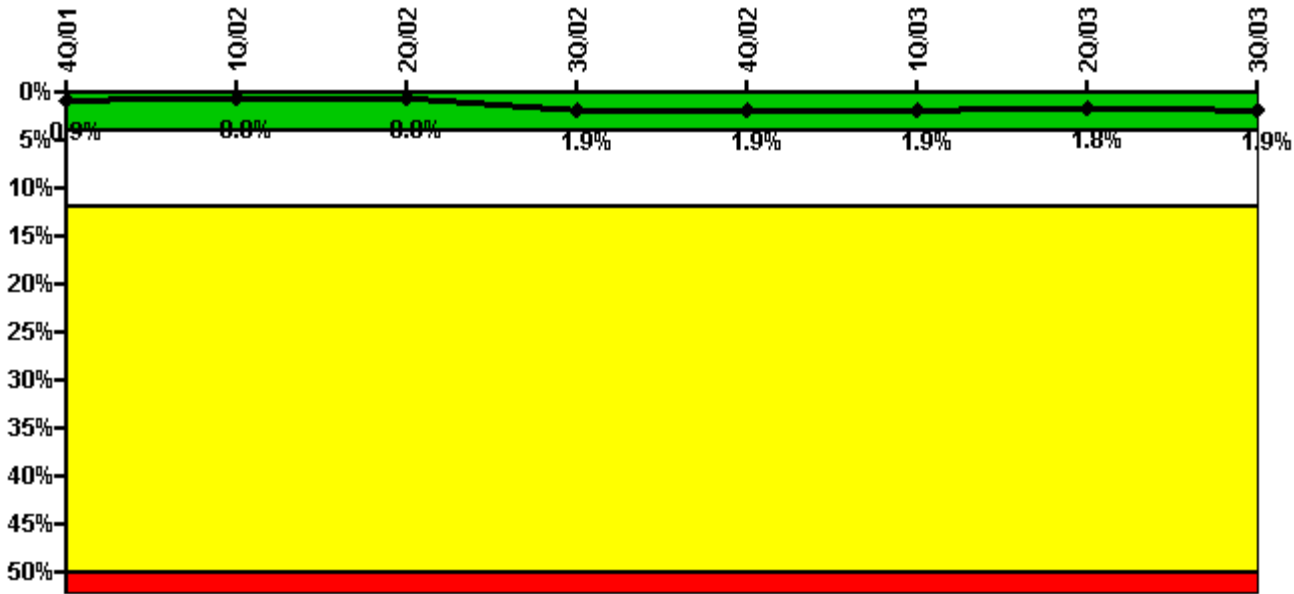
Thresholds: White > 4.0% Yellow > 12.0% Red > 50.0%

Notes

Safety System Unavailability, High Pressure Injection System (HPCI)	4Q/01	1Q/02	2Q/02	3Q/02	4Q/02	1Q/03	2Q/03	3Q/03
Train 1								
Planned unavailable hours	68.40	20.86	0	0	31.33	41.82	0	74.00
Unplanned unavailable hours	3.00	0	0	0	0	0	9.85	19.00
Fault exposure hours	0	0	0	0	0	0	0	0
Effective Reset hours	0	0	0	0	0	0	0	0
Required hours	2083.00	2054.00	2105.70	1896.50	2209.00	1649.00	1758.27	2208.00
Indicator value	0.9%	0.9%	0.9%	0.9%	1.0%	1.0%	1.1%	1.3%

Licensee Comments: none

Safety System Unavailability, Heat Removal System (RCIC)



Thresholds: White > 4.0% Yellow > 12.0% Red > 50.0%

Notes

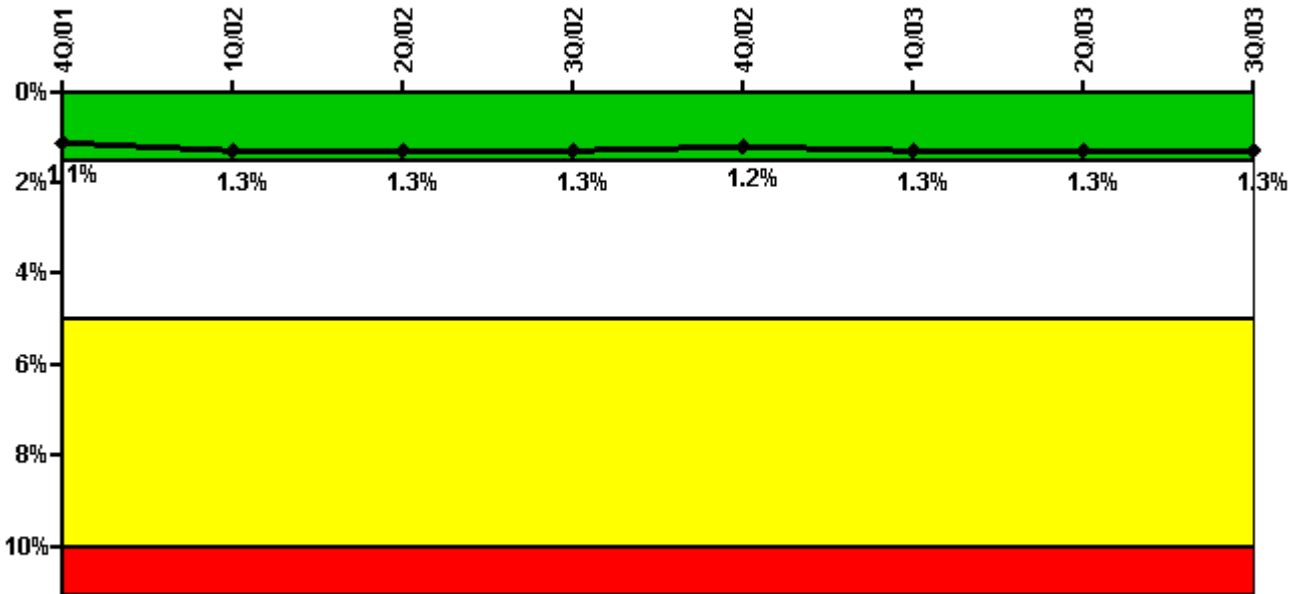
Safety System Unavailability, Heat Removal System (RCIC)	4Q/01	1Q/02	2Q/02	3Q/02	4Q/02	1Q/03	2Q/03	3Q/03
Train 1								
Planned unavailable hours	1.00	17.80	0	38.70	7.35	17.62	5.27	20.75
Unplanned unavailable hours	0	0	0	254.50	0	44.53	0	10.54
Fault exposure hours	0	0	0	0	0	0	0	0
Effective Reset hours	0	0	0	0	0	0	0	0
Required hours	2083.00	2054.00	2105.70	1896.50	2209.00	1649.00	1758.27	2208.00
Indicator value	0.9%	0.8%	0.8%	1.9%	1.9%	1.9%	1.8%	1.9%

Licensee Comments:

3Q/03: Engineering analysis for unavailability associated with a 2Q2003 support system unavailability issue is ongoing. This analysis is evaluating the effect of actual ambient conditions and will be completed within thirty days. Additionally, an FAQ regarding the operational response to mitigate the effect of this issue will be submitted within fourteen days.

3Q/03: Engineering analysis for unavailability associated with a 2Q2003 support system unavailability issue is ongoing. This analysis is evaluating the effect of actual ambient conditions and will be completed within thirty days. Additionally, an FAQ regarding the operational response to mitigate the effect of this issue will be submitted within fourteen days.

Safety System Unavailability, Residual Heat Removal System



Thresholds: White > 1.5% Yellow > 5.0% Red > 10.0%

Notes

Safety System Unavailability, Residual Heat Removal System	4Q/01	1Q/02	2Q/02	3Q/02	4Q/02	1Q/03	2Q/03	3Q/03
Train 1								
Planned unavailable hours	110.12	57.70	0	18.27	0	102.00	4.30	26.58
Unplanned unavailable hours	0	0	0	0	0	0	0	0
Fault exposure hours	0	0	0	0	0	0	0	0
Effective Reset hours	0	0	0	0	0	0	0	0
Required hours	2209.00	2160.00	2183.00	2208.00	2209.00	2160.00	2183.00	2208.00
Train 2								
Planned unavailable hours	44.28	76.70	23.20	15.03	11.40	0	17.00	17.38
Unplanned unavailable hours	0	0	55.32	0	0	0	0	0
Fault exposure hours	0	0	0	0	0	0	0	0
Effective Reset hours	0	0	0	0	0	0	0	0
Required hours	2209.00	2160.00	2183.00	2208.00	2209.00	2160.00	2183.00	2208.00
Indicator value	1.1%	1.3%	1.3%	1.3%	1.2%	1.3%	1.3%	1.3%

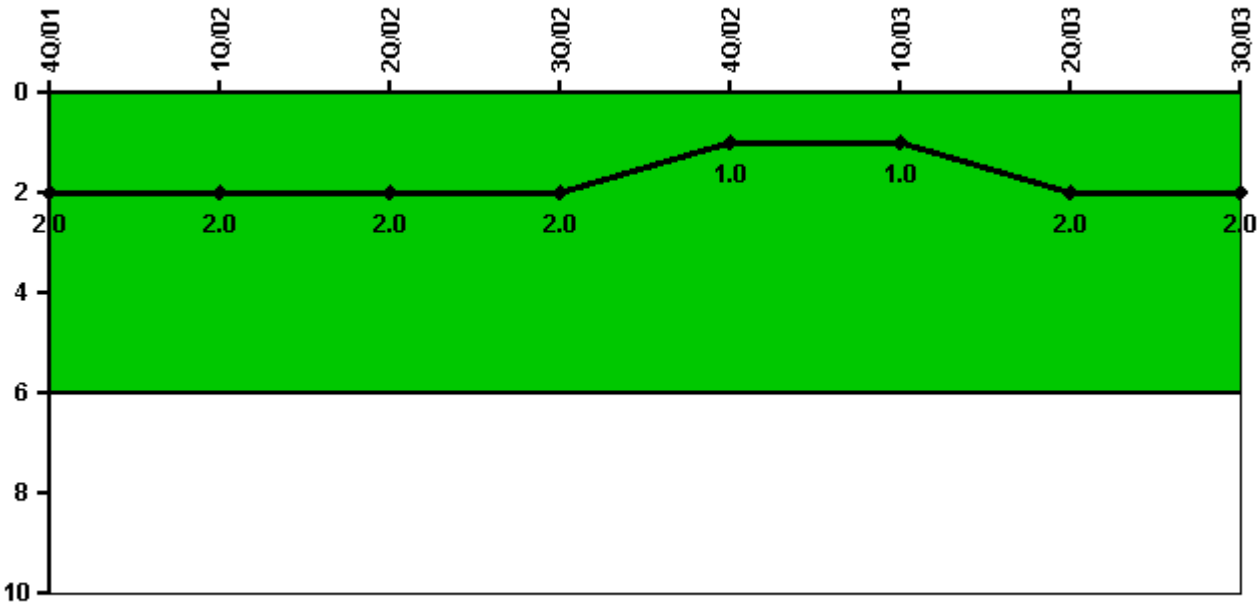
Licensee Comments:

3Q/03: Engineering analysis for unavailability associated with a 2Q2003 support system unavailability issue is ongoing. This analysis is evaluating the effect of actual ambient conditions and will be completed within thirty days. Additionally, an FAQ regarding the operational response to mitigate the effect of this issue will be submitted within fourteen days.

3Q/03: Engineering analysis for unavailability associated with a 2Q2003 support system unavailability issue is

ongoing. This analysis is evaluating the effect of actual ambient conditions and will be completed within thirty days. Additionally, an FAQ regarding the operational response to mitigate the effect of this issue will be submitted within fourteen days.

Safety System Functional Failures (BWR)



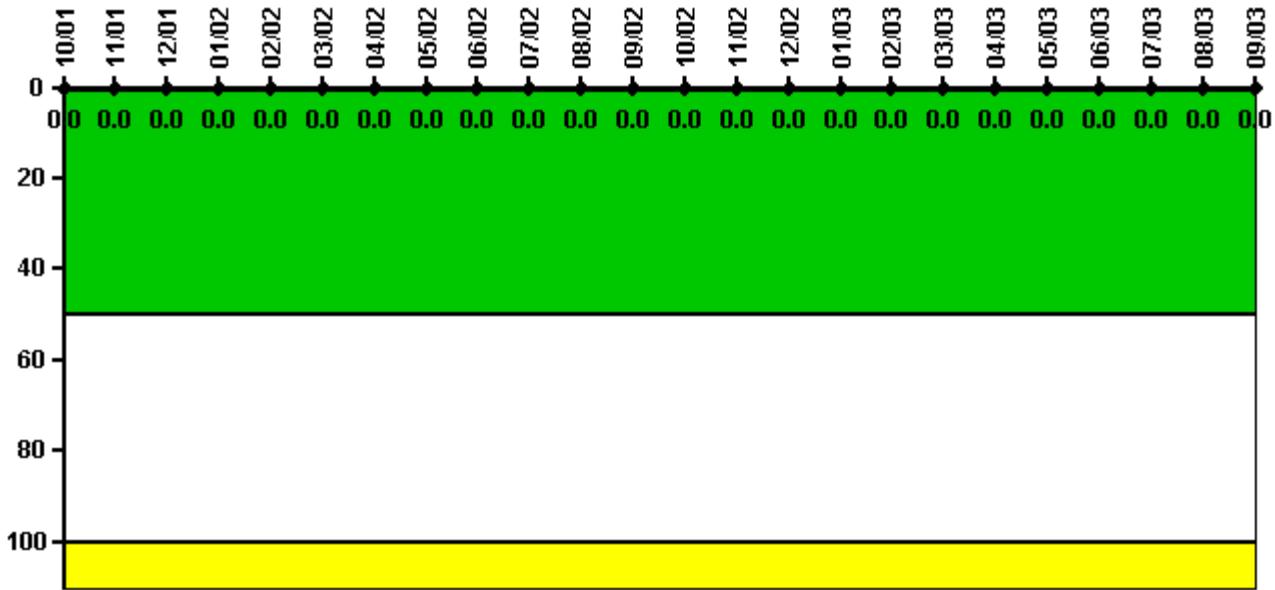
Thresholds: White > 6.0

Notes

Safety System Functional Failures (BWR)	4Q/01	1Q/02	2Q/02	3Q/02	4Q/02	1Q/03	2Q/03	3Q/03
Safety System Functional Failures	2	0	0	0	1	0	1	0
Indicator value	2	2	2	2	1	1	2	2

Licensee Comments: none

Reactor Coolant System Activity



Thresholds: White > 50.0 Yellow > 100.0

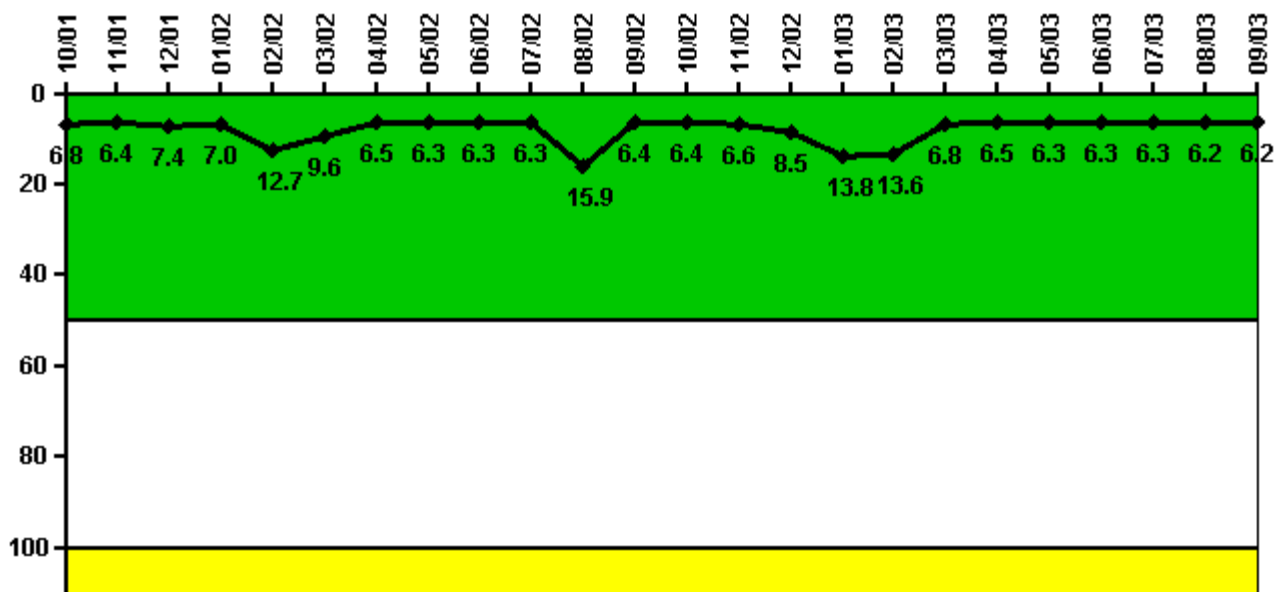
Notes

Reactor Coolant System Activity	10/01	11/01	12/01	1/02	2/02	3/02	4/02	5/02	6/02	7/02	8/02	9/02
Maximum activity	0.000002	0	0	0	0	0.000003	0	0.000004	0	0	0	0
Technical specification limit	0.2	0.2	0.2	0.2	0.2	0.2	0.2	0.2	0.2	0.2	0.2	0.2
Indicator value	0	0	0	0	0	0	0	0	0	0	0	0

Reactor Coolant System Activity	10/02	11/02	12/02	1/03	2/03	3/03	4/03	5/03	6/03	7/03	8/03	9/03
Maximum activity	0	0	0	0	0	0	0.000001	0	0	0	0	0
Technical specification limit	0.2	0.2	0.2	1.2	1.2	1.2	0.2	0.2	0.2	0.2	0.2	0.2
Indicator value	0	0	0	0	0	0	0	0	0	0	0	0

Licensee Comments: none

Reactor Coolant System Leakage



Thresholds: White > 50.0 Yellow > 100.0

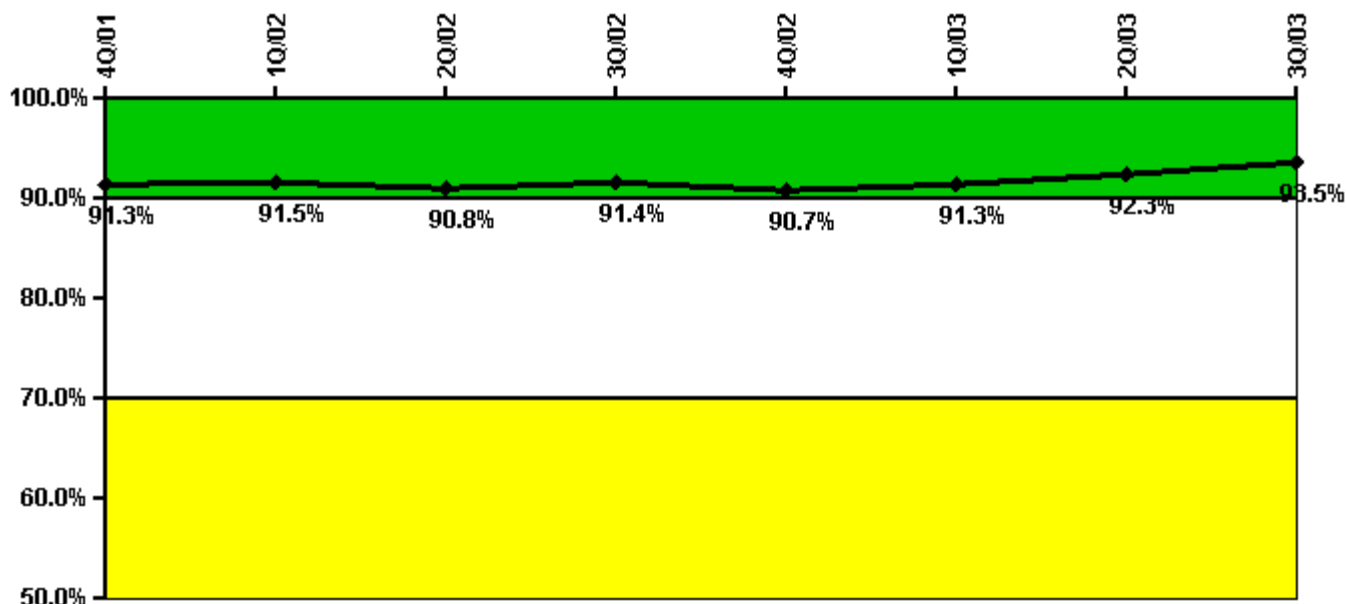
Notes

Reactor Coolant System Leakage	10/01	11/01	12/01	1/02	2/02	3/02	4/02	5/02	6/02	7/02	8/02	9/02
Maximum leakage	1.690	1.600	1.850	1.740	3.170	2.390	1.620	1.580	1.580	1.580	3.980	1.590
Technical specification limit	25.0	25.0	25.0	25.0	25.0	25.0	25.0	25.0	25.0	25.0	25.0	25.0
Indicator value	6.8	6.4	7.4	7.0	12.7	9.6	6.5	6.3	6.3	6.3	15.9	6.4

Reactor Coolant System Leakage	10/02	11/02	12/02	1/03	2/03	3/03	4/03	5/03	6/03	7/03	8/03	9/03
Maximum leakage	1.590	1.640	2.120	3.460	3.400	1.700	1.630	1.580	1.580	1.580	1.560	1.550
Technical specification limit	25.0	25.0	25.0	25.0	25.0	25.0	25.0	25.0	25.0	25.0	25.0	25.0
Indicator value	6.4	6.6	8.5	13.8	13.6	6.8	6.5	6.3	6.3	6.3	6.2	6.2

Licensee Comments: none

Drill/Exercise Performance



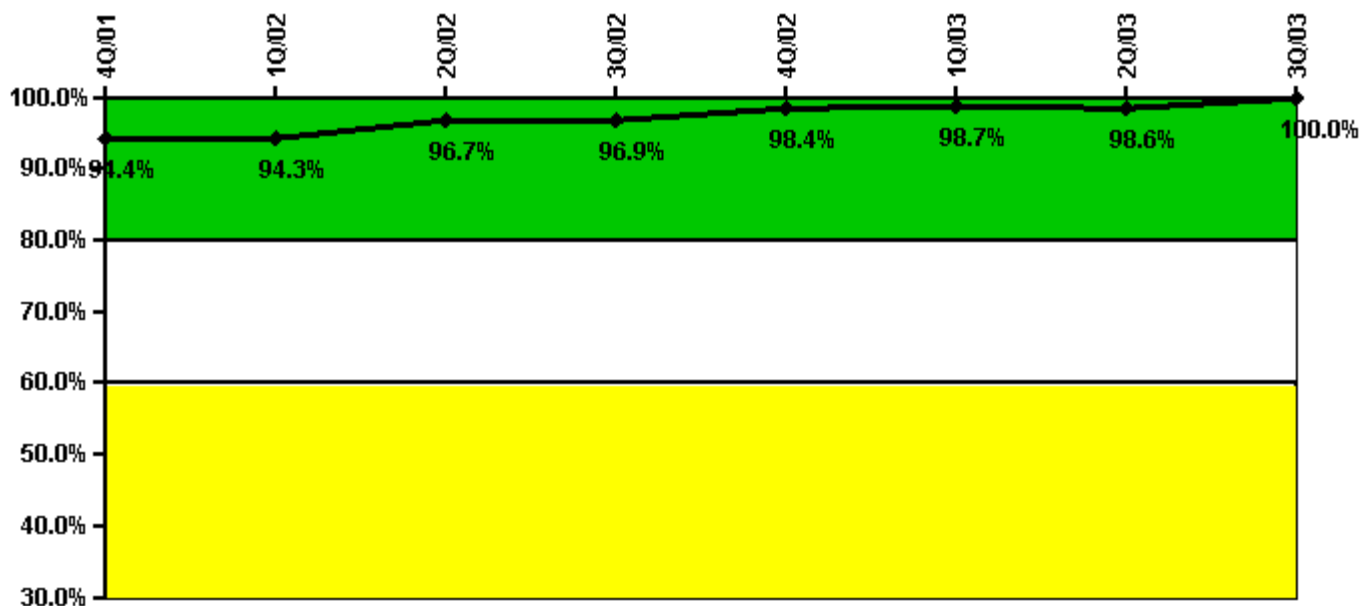
Thresholds: White < 90.0% Yellow < 70.0%

Notes

Drill/Exercise Performance	4Q/01	1Q/02	2Q/02	3Q/02	4Q/02	1Q/03	2Q/03	3Q/03
Successful opportunities	50.0	22.0	61.0	9.0	9.0	41.0	52.0	60.0
Total opportunities	56.0	24.0	67.0	10.0	11.0	42.0	52.0	63.0
Indicator value	91.3%	91.5%	90.8%	91.4%	90.7%	91.3%	92.3%	93.5%

Licensee Comments: none

ERO Drill Participation



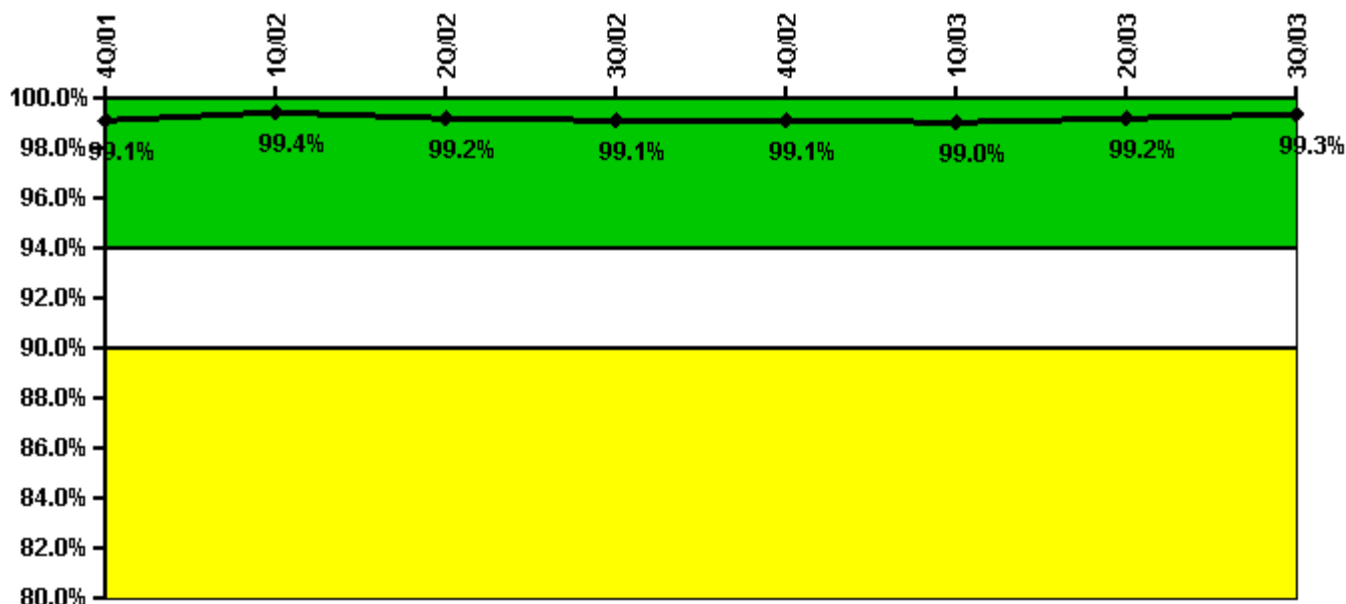
Thresholds: White < 80.0% Yellow < 60.0%

Notes

ERO Drill Participation	4Q/01	1Q/02	2Q/02	3Q/02	4Q/02	1Q/03	2Q/03	3Q/03
Participating Key personnel	51.0	50.0	59.0	62.0	63.0	74.0	68.0	58.0
Total Key personnel	54.0	53.0	61.0	64.0	64.0	75.0	69.0	58.0
Indicator value	94.4%	94.3%	96.7%	96.9%	98.4%	98.7%	98.6%	100.0%

Licensee Comments: none

Alert & Notification System



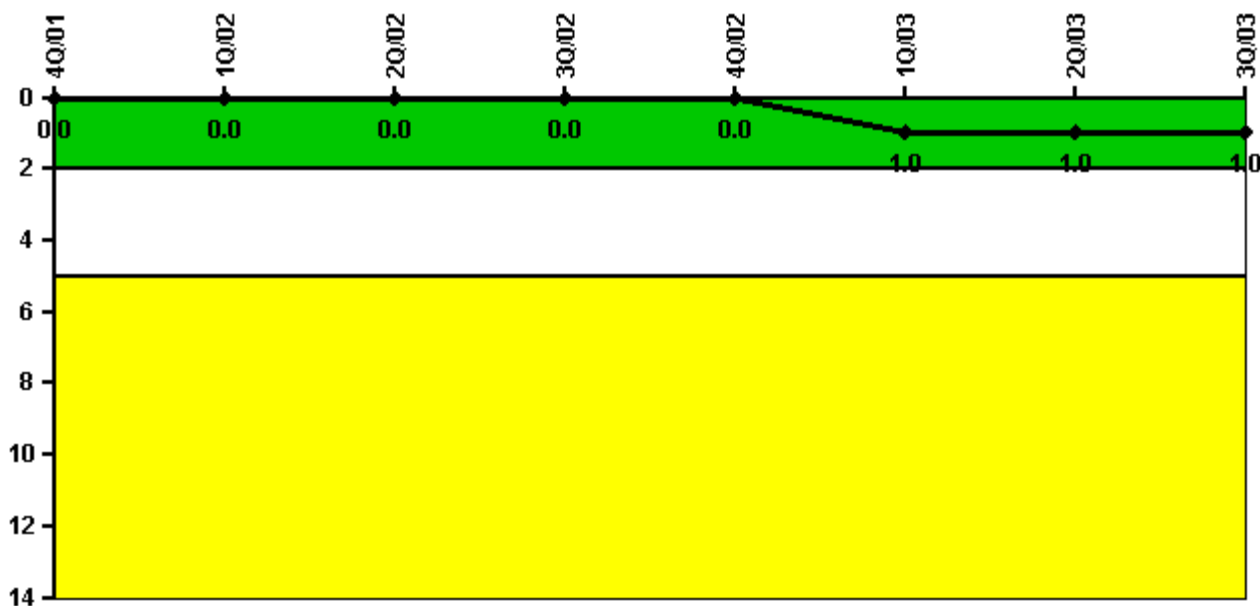
Thresholds: White < 94.0% Yellow < 90.0%

Notes

Alert & Notification System	4Q/01	1Q/02	2Q/02	3Q/02	4Q/02	1Q/03	2Q/03	3Q/03
Successful siren-tests	427	427	423	424	426	425	428	425
Total sirens-tests	429	429	429	429	429	429	429	429
Indicator value	99.1%	99.4%	99.2%	99.1%	99.1%	99.0%	99.2%	99.3%

Licensee Comments: none

Occupational Exposure Control Effectiveness



Thresholds: White > 2.0 Yellow > 5.0

Notes

Occupational Exposure Control Effectiveness	4Q/01	1Q/02	2Q/02	3Q/02	4Q/02	1Q/03	2Q/03	3Q/03
High radiation area occurrences	0	0	0	0	0	1	0	0
Very high radiation area occurrences	0	0	0	0	0	0	0	0
Unintended exposure occurrences	0	0	0	0	0	0	0	0
Indicator value	0	0	0	0	0	1	1	1

Licensee Comments: none

RETS/ODCM Radiological Effluent



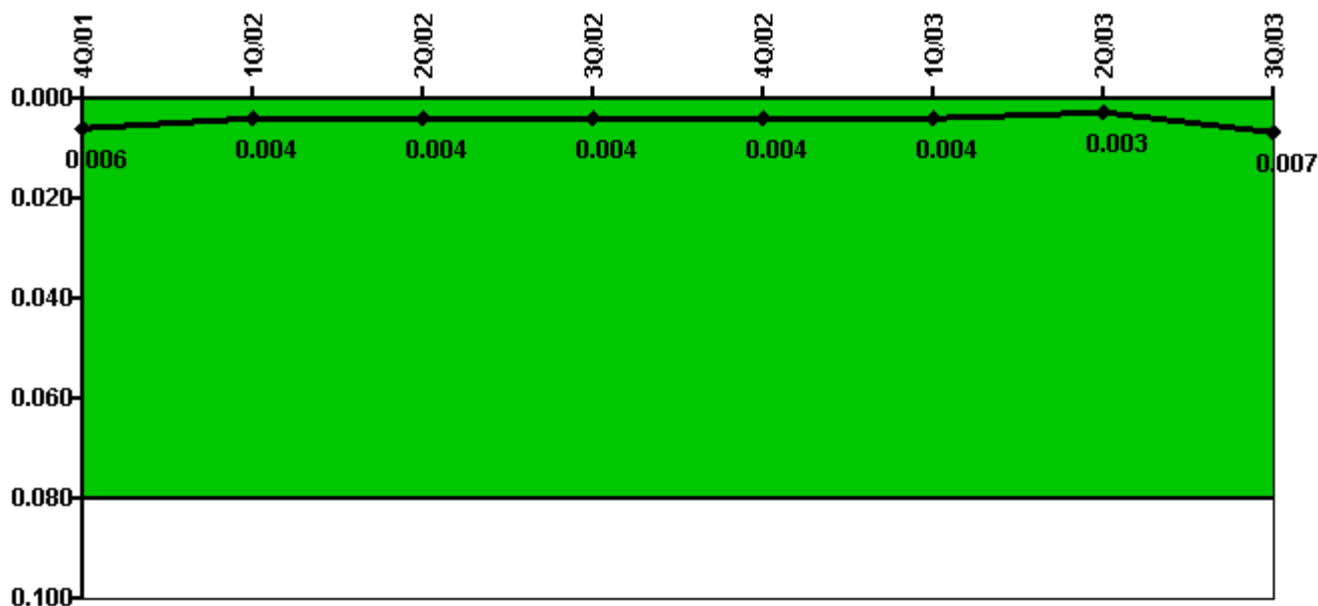
Thresholds: White > 1.0 Yellow > 3.0

Notes

RETS/ODCM Radiological Effluent	4Q/01	1Q/02	2Q/02	3Q/02	4Q/02	1Q/03	2Q/03	3Q/03
RETS/ODCM occurrences	0	0	0	0	0	0	0	0
Indicator value	0	0	0	0	0	0	0	0

Licensee Comments: none

Protected Area Security Performance Index



Thresholds: White > 0.080

Notes

Protected Area Security Performance Index	4Q/01	1Q/02	2Q/02	3Q/02	4Q/02	1Q/03	2Q/03	3Q/03
IDS compensatory hours	21.52	11.32	6.77	19.93	33.42	1.97	10.45	85.13
CCTV compensatory hours	0	1.5	14.7	2.3	0	0	0	7.6
IDS normalization factor	1.20	1.20	1.20	1.20	1.20	1.20	1.20	1.20
CCTV normalization factor	1.0	1.0	1.0	1.0	1.0	1.0	1.0	1.0
Index Value	0.006	0.004	0.004	0.004	0.004	0.004	0.003	0.007

Licensee Comments: none

Personnel Screening Program



Thresholds: White > 2.0 Yellow > 5.0

Notes

Personnel Screening Program	4Q/01	1Q/02	2Q/02	3Q/02	4Q/02	1Q/03	2Q/03	3Q/03
Program failures	0	0	0	0	0	0	0	0
Indicator value	0	0	0	0	0	0	0	0

Licensee Comments: none

FFD/Personnel Reliability



Thresholds: White > 2.0 Yellow > 5.0

Notes

FFD/Personnel Reliability	4Q/01	1Q/02	2Q/02	3Q/02	4Q/02	1Q/03	2Q/03	3Q/03
Program Failures	0	0	0	0	0	0	0	0
Indicator value	0	0	0	0	0	0	0	0

Licensee Comments: none

▲ [PI Summary](#) | [Inspection Findings Summary](#) | [Reactor Oversight Process](#)

Last Modified: October 28, 2003