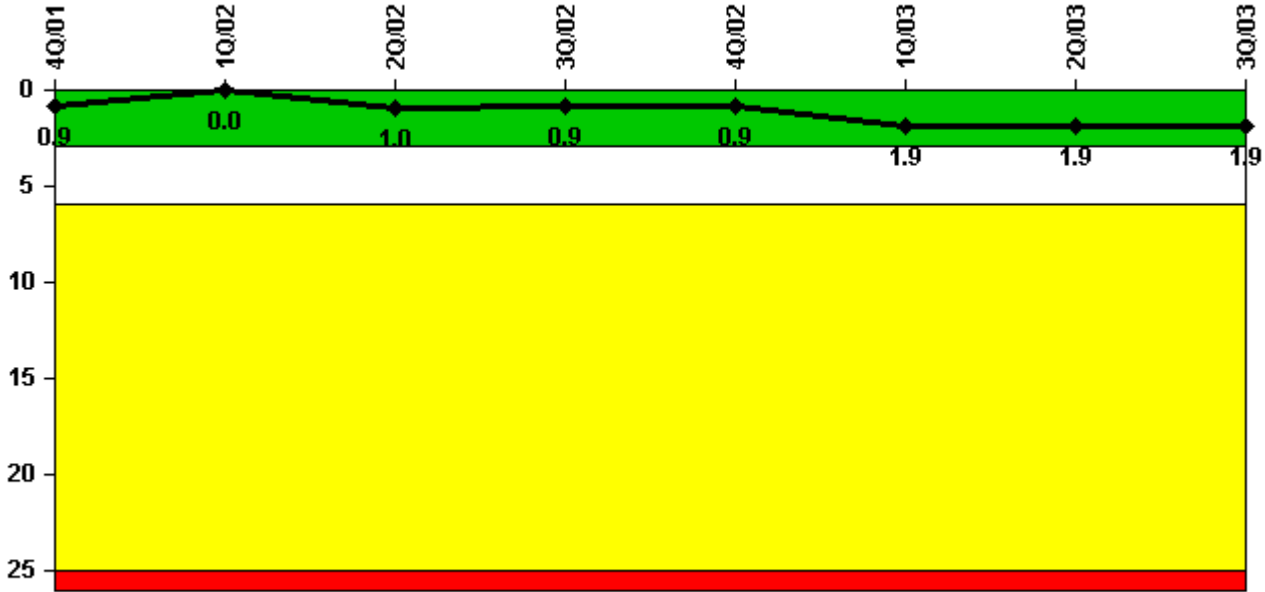


## D.C. Cook 1

### 3Q/2003 Performance Indicators

Licensee's General Comments: none

#### Unplanned Scrams per 7000 Critical Hrs



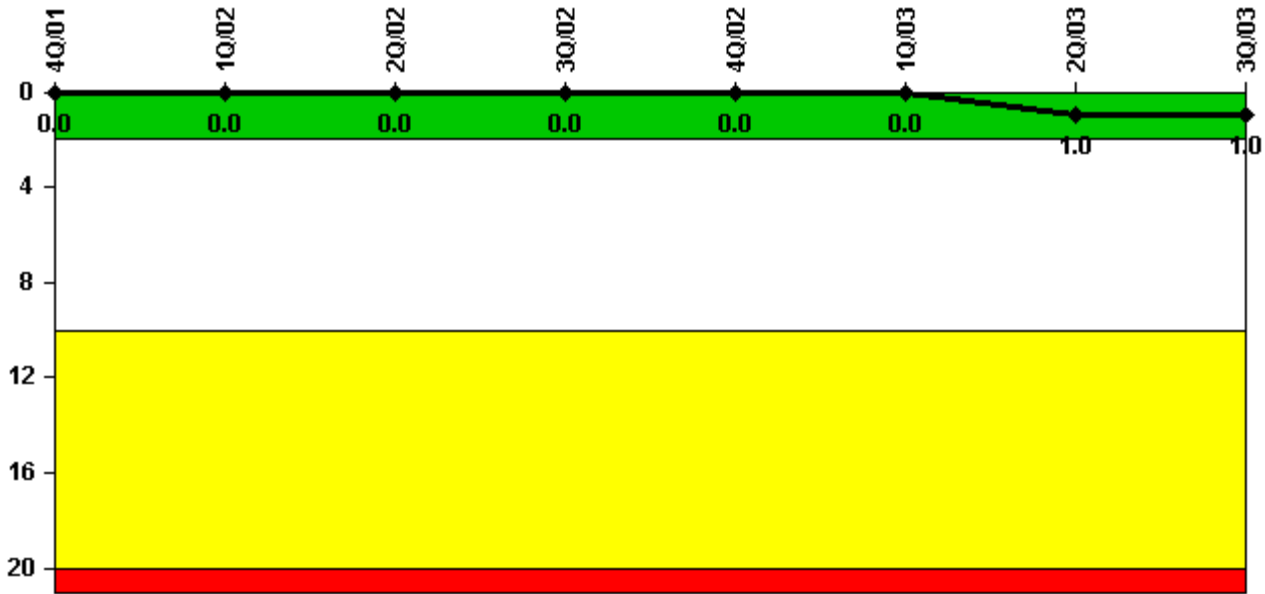
Thresholds: White > 3.0 Yellow > 6.0 Red > 25.0

#### Notes

Unplanned Scrams per 7000 Critical Hrs	4Q/01	1Q/02	2Q/02	3Q/02	4Q/02	1Q/03	2Q/03	3Q/03
Unplanned scrams	0	0	1.0	0	0	1.0	1.0	0
Critical hours	2209.0	2160.0	1251.0	2208.0	2209.0	1695.2	1370.7	2208.0
Indicator value	0.9	0	1.0	0.9	0.9	1.9	1.9	1.9

Licensee Comments: none

### Scrams with Loss of Normal Heat Removal



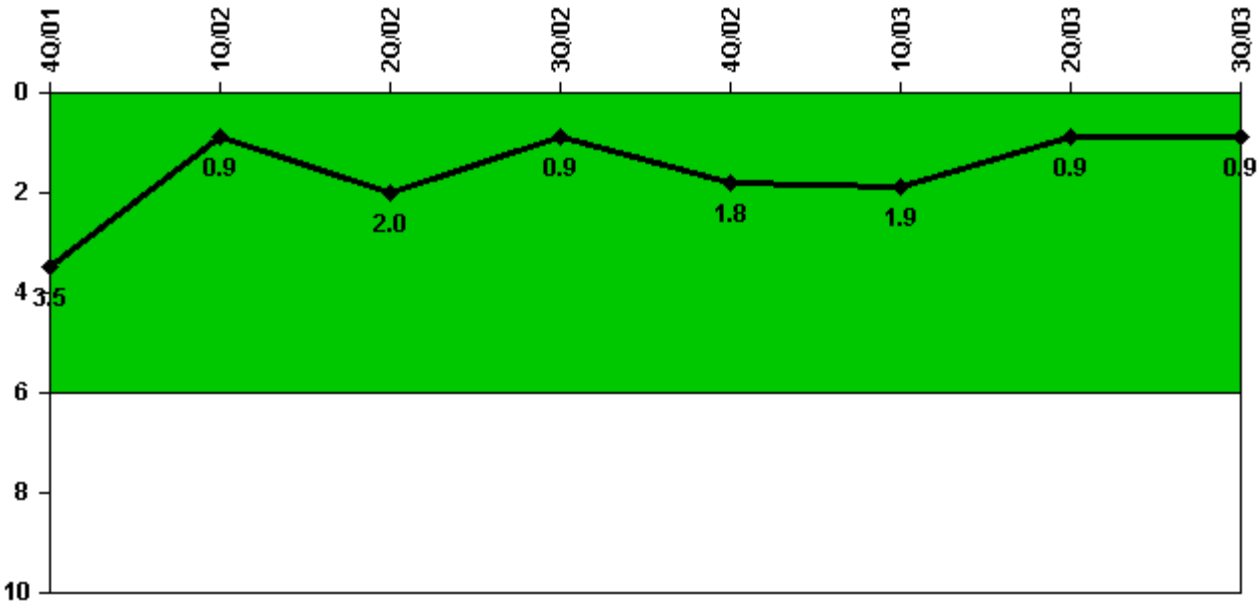
Thresholds: White > 2.0 Yellow > 10.0 Red > 20.0

#### Notes

Scrams with Loss of Normal Heat Removal	4Q/01	1Q/02	2Q/02	3Q/02	4Q/02	1Q/03	2Q/03	3Q/03
Scrams	0	0	0	0	0	0	1.0	0
Indicator value	0	0	0	0	0	0	1.0	1.0

Licensee Comments: none

### Unplanned Power Changes per 7000 Critical Hrs



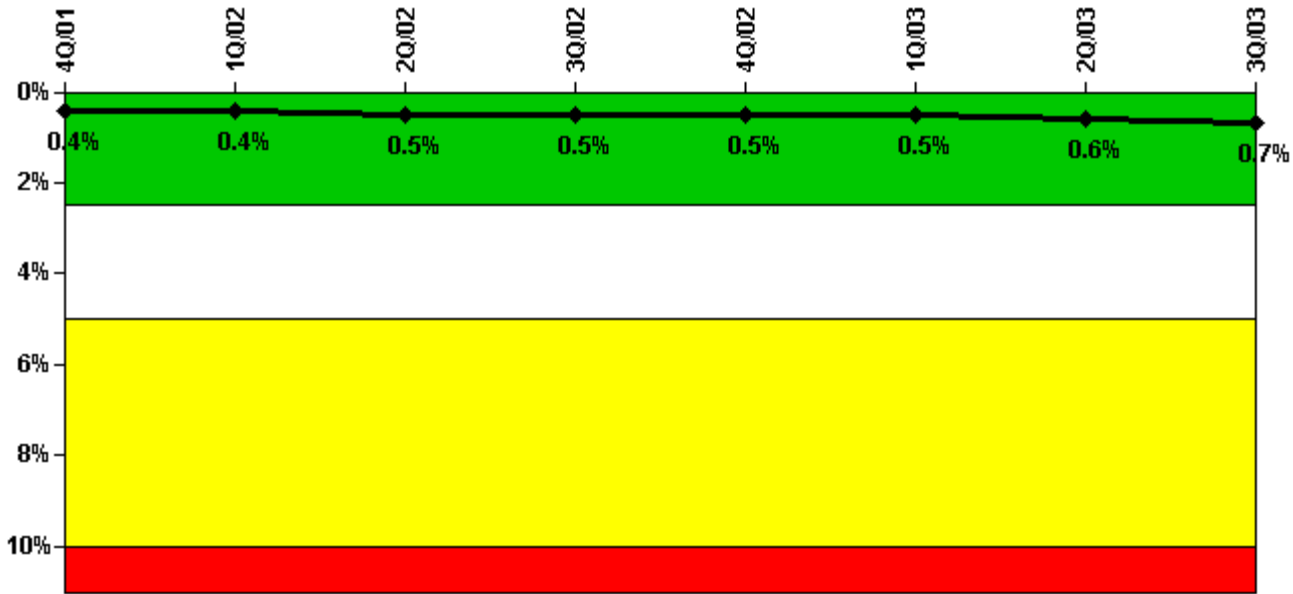
Thresholds: White > 6.0

#### Notes

Unplanned Power Changes per 7000 Critical Hrs	4Q/01	1Q/02	2Q/02	3Q/02	4Q/02	1Q/03	2Q/03	3Q/03
Unplanned power changes	0	0	1.0	0	1.0	0	0	0
Critical hours	2209.0	2160.0	1251.0	2208.0	2209.0	1695.2	1370.7	2208.0
Indicator value	3.5	0.9	2.0	0.9	1.8	1.9	0.9	0.9

Licensee Comments: none

### Safety System Unavailability, Emergency AC Power



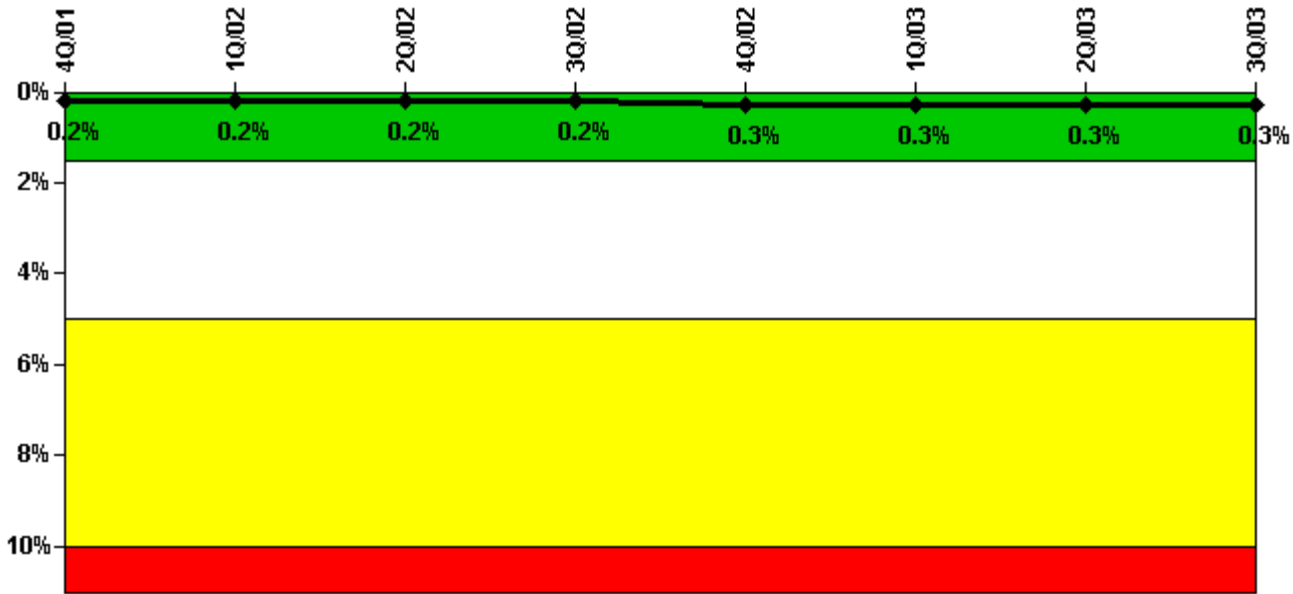
Thresholds: White > 2.5% Yellow > 5.0% Red > 10.0%

#### Notes

Safety System Unavailability, Emergency AC Power	4Q/01	1Q/02	2Q/02	3Q/02	4Q/02	1Q/03	2Q/03	3Q/03
<b>Train 1</b>								
Planned unavailable hours	33.85	15.90	2.20	1.50	18.10	16.14	0.42	27.81
Unplanned unavailable hours	0	0	25.90	0	0	0	0	13.17
Fault exposure hours	0	0	1.00	0	0	0	0	0
Effective Reset hours	0	0	0	0	0	0	0	0
Required hours	2209.00	2160.00	1531.15	2208.00	2209.00	2160.00	1585.00	2208.00
<b>Train 2</b>								
Planned unavailable hours	25.70	14.55	5.60	0.55	17.90	20.23	44.83	18.61
Unplanned unavailable hours	0	0	0	0	0	0	0	0
Fault exposure hours	0	0	0	0	0	0	0	0
Effective Reset hours	0	0	0	0	0	0	0	0
Required hours	2209.00	2160.00	1431.65	2208.00	2209.00	2160.00	2183.00	2208.00
Indicator value	0.4%	0.4%	0.5%	0.5%	0.5%	0.5%	0.6%	0.7%

Licensee Comments: none

### Safety System Unavailability, High Pressure Injection System (HPSI)



Thresholds: White > 1.5% Yellow > 5.0% Red > 10.0%

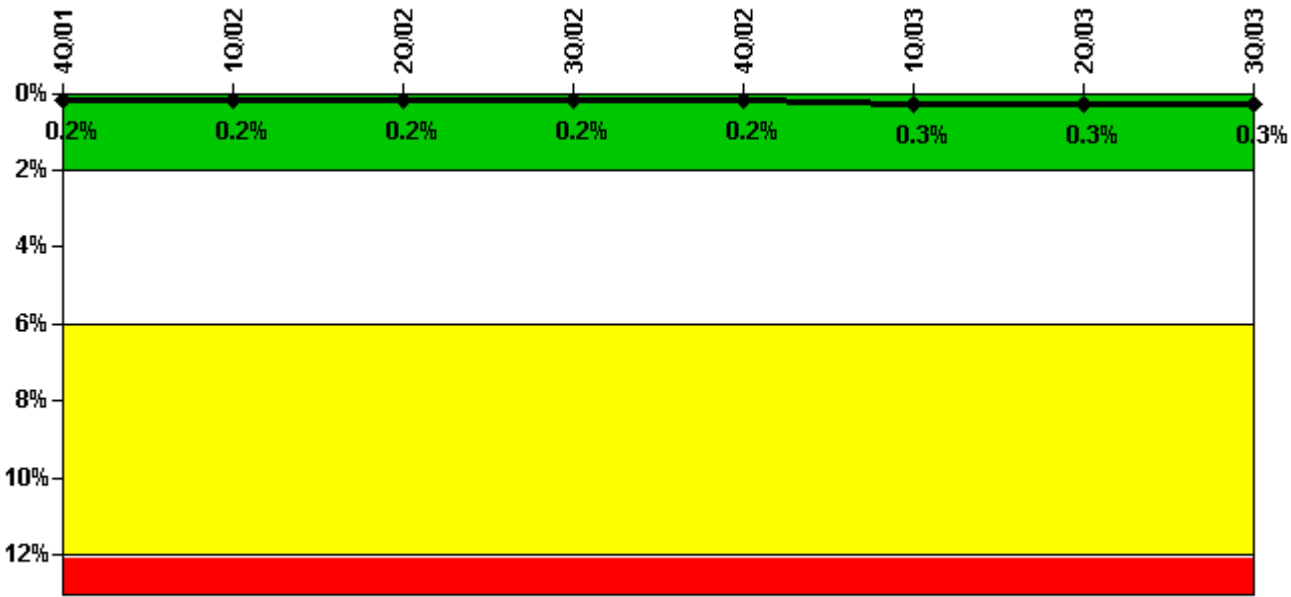
**Notes**

Safety System Unavailability, High Pressure Injection System (HPSI)	4Q/01	1Q/02	2Q/02	3Q/02	4Q/02	1Q/03	2Q/03	3Q/03
<b>Train 1</b>								
Planned unavailable hours	14.07	0	5.58	0	49.10	11.17	0	7.82
Unplanned unavailable hours	0	0	0	2.82	0	0	0	0
Fault exposure hours	0	0	0	0	0	0	0	0
Effective Reset hours	0	0	0	0	0	0	0	0
Required hours	2209.00	2160.00	1431.56	2208.00	2209.00	1804.95	1433.97	2208.00
<b>Train 2</b>								
Planned unavailable hours	0	0	8.82	0	6.22	1.75	10.00	0
Unplanned unavailable hours	0	0	0	0	0	0	0	0
Fault exposure hours	0	0	0	0	0	0	0	0
Effective Reset hours	0	0	0	0	0	0	0	0
Required hours	2209.00	2160.00	1386.43	2208.00	2209.00	1866.13	1499.10	2208.00
<b>Train 3</b>								
Planned unavailable hours	0	0	9.33	7.00	0	0	0	0
Unplanned unavailable hours	0	0	0	0	2.92	0	0	0
Fault exposure hours	0	0	0	0	0	0	0	0
Effective Reset hours	0	0	0	0	0	0	0	0
Required hours	2209.00	2160.00	1386.43	2208.00	2209.00	1804.95	1433.97	2208.00
<b>Train 4</b>								
Planned unavailable hours	0	11.75	3.78	0	0	6.75	0	0
Unplanned unavailable hours	0	0	0	0	0	0	0	0
Fault exposure hours	0	0	0	0	0	0	0	0
Effective Reset hours	0	0	0	0	0	0	0	0

Required hours	2209.00	2160.00	1386.43	2208.00	2209.00	1804.95	1419.20	2208.00
Indicator value	0.2%	0.2%	0.2%	0.2%	0.3%	0.3%	0.3%	0.3%

Licensee Comments: none

### Safety System Unavailability, Heat Removal System (AFW)



Thresholds: White > 2.0% Yellow > 6.0% Red > 12.0%

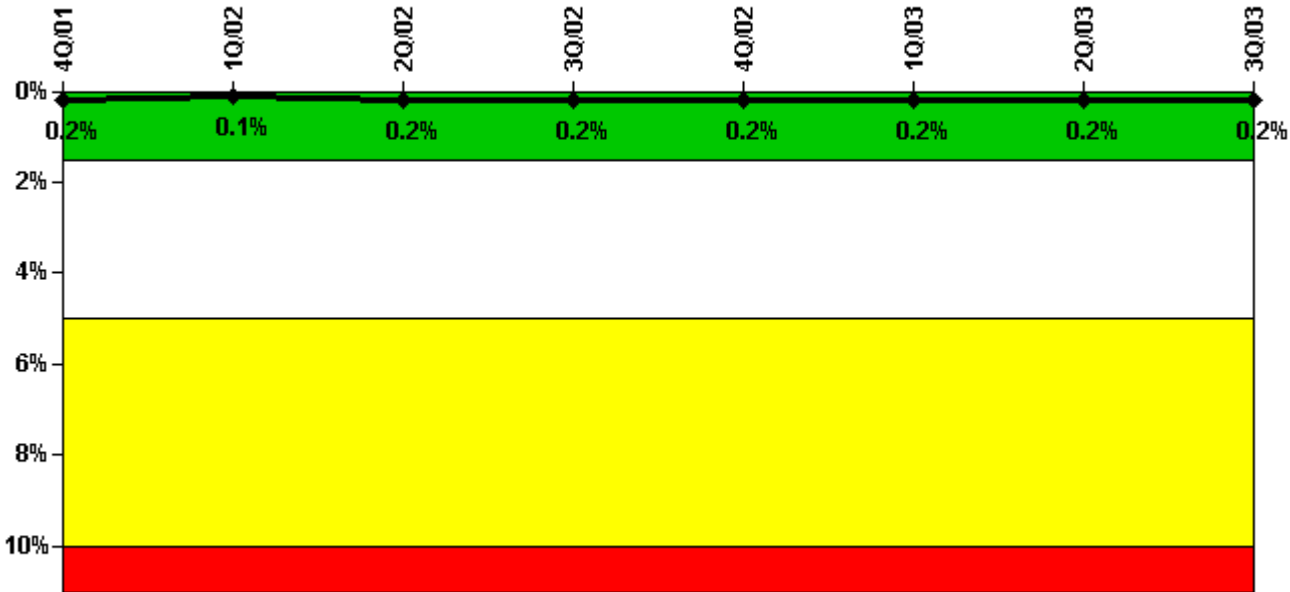
### Notes

Safety System Unavailability, Heat Removal System (AFW)	4Q/01	1Q/02	2Q/02	3Q/02	4Q/02	1Q/03	2Q/03	3Q/03
<b>Train 1</b>								
Planned unavailable hours	6.98	0	0	0	2.67	0	19.15	5.03
Unplanned unavailable hours	0	0	0	0	0	0	0	0
Fault exposure hours	0	0	0	0	0	0	0	0
Effective Reset hours	0	0	0	0	0	0	0	0
Required hours	2209.00	2160.00	1357.71	2208.00	2209.00	1804.95	1419.20	2008.00
<b>Train 2</b>								
Planned unavailable hours	0	5.95	6.55	10.18	0	9.63	0	0
Unplanned unavailable hours	0	0	0	0	0	0	0	0
Fault exposure hours	0	0	0	0	0	0	0	0
Effective Reset hours	0	0	0	0	0	0	0	0
Required hours	2209.00	2160.00	1357.70	2208.00	2209.00	1804.95	1419.20	2208.00
<b>Train 3</b>								

Planned unavailable hours	0	3.08	8.88	12.75	0	13.12	0	0
Unplanned unavailable hours	1.25	0	0	0	0	13.03	0	0
Fault exposure hours	0	0	0	0	0	0	0	0
Effective Reset hours	0	0	0	0	0	0	0	0
Required hours	2209.00	2160.00	1357.70	2208.00	2209.00	1804.95	1419.20	2208.00
Indicator value	0.2%	0.2%	0.2%	0.2%	0.2%	0.3%	0.3%	0.3%

Licensee Comments: none

### Safety System Unavailability, Residual Heat Removal System



Thresholds: White > 1.5% Yellow > 5.0% Red > 10.0%

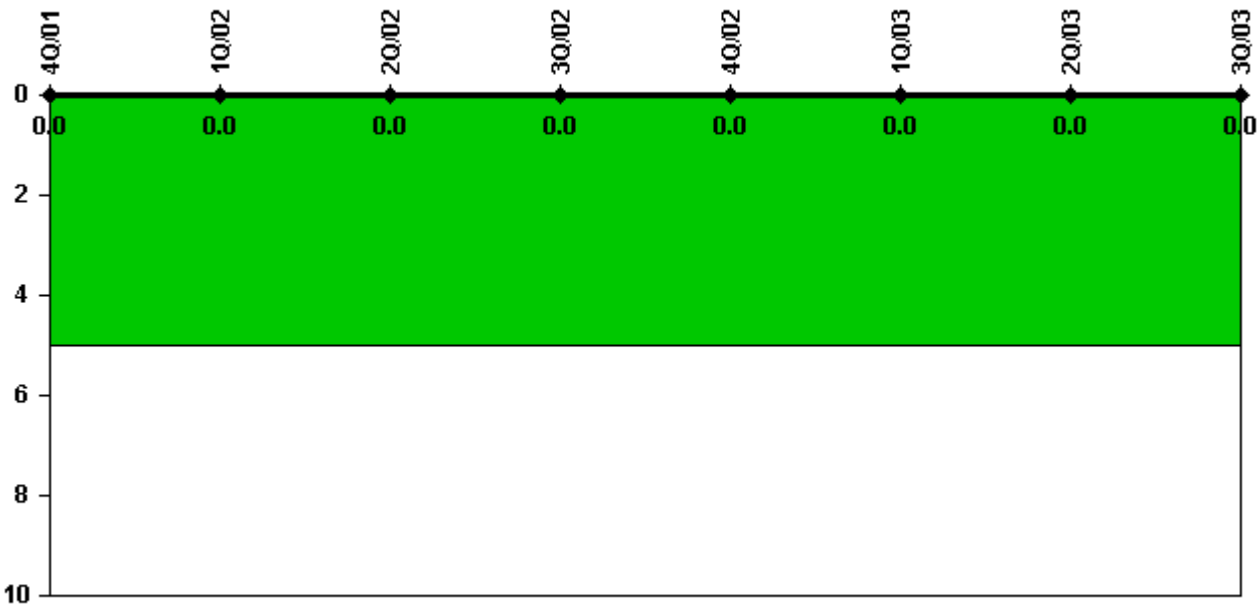
### Notes

Safety System Unavailability, Residual Heat Removal System	4Q/01	1Q/02	2Q/02	3Q/02	4Q/02	1Q/03	2Q/03	3Q/03
<b>Train 1</b>								
Planned unavailable hours	9.72	0	11.98	7.42	0	0.75	0	12.30
Unplanned unavailable hours	0	0	0	0	0	0	0	0
Fault exposure hours	0	0	0	0	0	0	0	0
Effective Reset hours	0	0	0	0	0	0	0	0
Required hours	2209.00	2160.00	1962.60	2208.00	2209.00	2160.00	2183.00	2208.00
<b>Train 2</b>								
Planned unavailable hours	4.98	0	4.03	7.38	8.85	0	0	12.82
Unplanned unavailable hours	0	0	0	0	0	0	0	0

Fault exposure hours	0	0	0	0	0	0	0	0
Effective Reset hours	0	0	0	0	0	0	0	0
Required hours	2209.00	2160.00	1962.60	2208.00	2209.00	2160.00	2183.00	2208.00
Indicator value	0.2%	0.1%	0.2%	0.2%	0.2%	0.2%	0.2%	0.2%

Licensee Comments: none

### Safety System Functional Failures (PWR)



Thresholds: White > 5.0

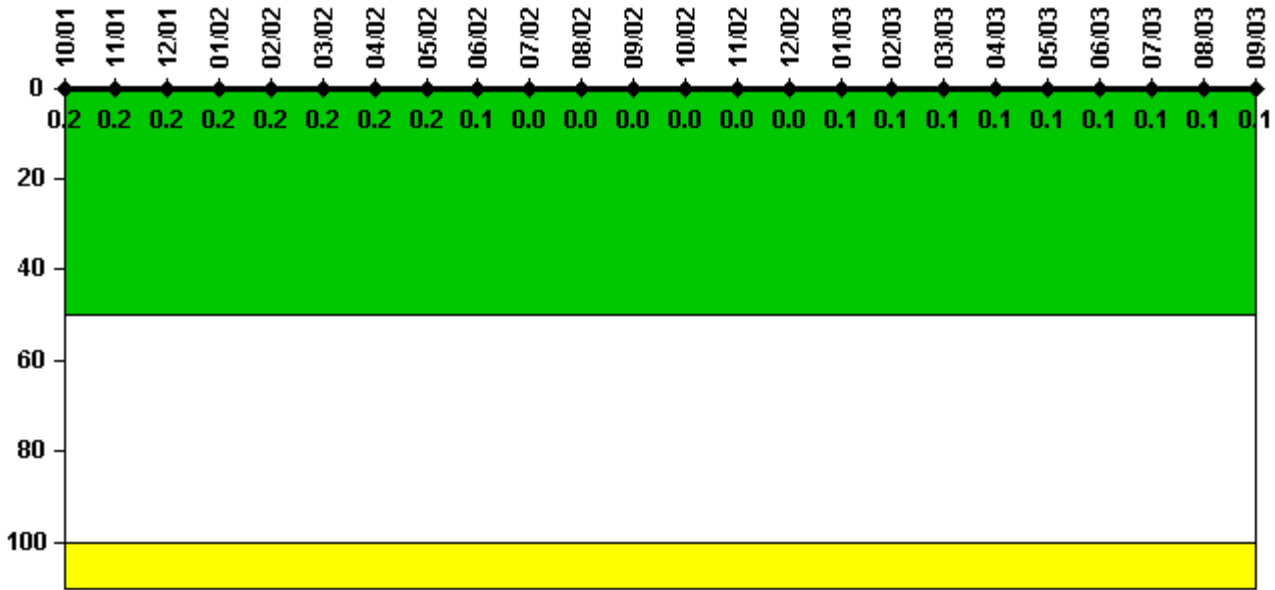
### Notes

Safety System Functional Failures (PWR)	4Q/01	1Q/02	2Q/02	3Q/02	4Q/02	1Q/03	2Q/03	3Q/03
Safety System Functional Failures	0	0	0	0	0	0	0	0
Indicator value	0	0	0	0	0	0	0	0

Licensee Comments: none



### Reactor Coolant System Activity



Thresholds: White > 50.0 Yellow > 100.0

**Notes**

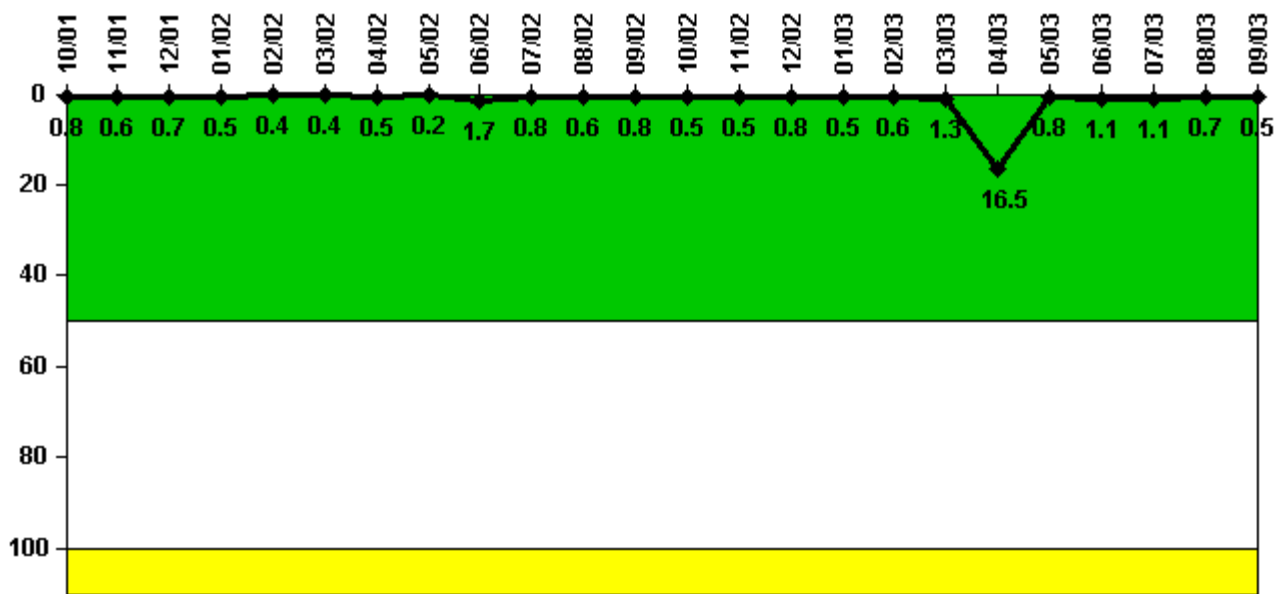
Reactor Coolant System Activity	10/01	11/01	12/01	1/02	2/02	3/02	4/02	5/02	6/02	7/02	8/02	9/02
Maximum activity	0.002210	0.002040	0.002170	0.002390	0.002390	0.002260	0.002250	0.002390	0.000824	0.000447	0.000457	0.000457
Technical specification limit	1.0	1.0	1.0	1.0	1.0	1.0	1.0	1.0	1.0	1.0	1.0	1.0
Indicator value	0.2	0.2	0.2	0.2	0.2	0.2	0.2	0.2	0.1	0	0	0

Reactor Coolant System Activity	10/02	11/02	12/02	1/03	2/03	3/03	4/03	5/03	6/03	7/03	8/03	9/03
Maximum activity	0.000470	0.000498	0.000492	0.000506	0.000949	0.000898	0.000881	0.000546	0.000910	0.001110	0.000936	0.000834
Technical specification limit	1.0	1.0	1.0	1.0	1.0	1.0	1.0	1.0	1.0	1.0	1.0	1.0
Indicator value	0	0	0	0.1	0.1	0.1	0.1	0.1	0.1	0.1	0.1	0.1

Licensee Comments: none

### Reactor Coolant System Leakage



Thresholds: White > 50.0 Yellow > 100.0

#### Notes

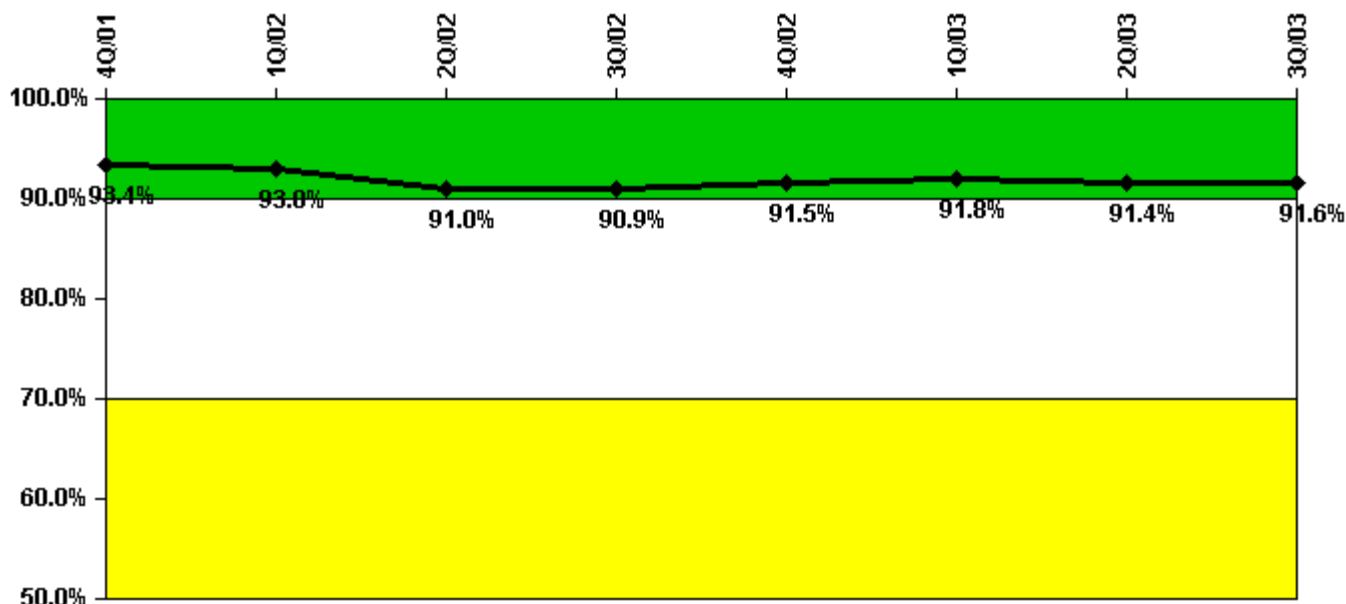
Reactor Coolant System Leakage	10/01	11/01	12/01	1/02	2/02	3/02	4/02	5/02	6/02	7/02	8/02	9/02
Maximum leakage	0.090	0.066	0.077	0.050	0.040	0.042	0.050	0.020	0.188	0.085	0.063	0.090
Technical specification limit	11.0	11.0	11.0	11.0	11.0	11.0	11.0	11.0	11.0	11.0	11.0	11.0
Indicator value	0.8	0.6	0.7	0.5	0.4	0.4	0.5	0.2	1.7	0.8	0.6	0.8

Reactor Coolant System Leakage	10/02	11/02	12/02	1/03	2/03	3/03	4/03	5/03	6/03	7/03	8/03	9/03
Maximum leakage	0.050	0.060	0.090	0.050	0.069	0.148	1.820	0.091	0.120	0.120	0.076	0.057
Technical specification limit	11.0	11.0	11.0	11.0	11.0	11.0	11.0	11.0	11.0	11.0	11.0	11.0
Indicator value	0.5	0.5	0.8	0.5	0.6	1.3	16.5	0.8	1.1	1.1	0.7	0.5

Licensee Comments: none

### Drill/Exercise Performance



Thresholds: White < 90.0% Yellow < 70.0%

#### Notes

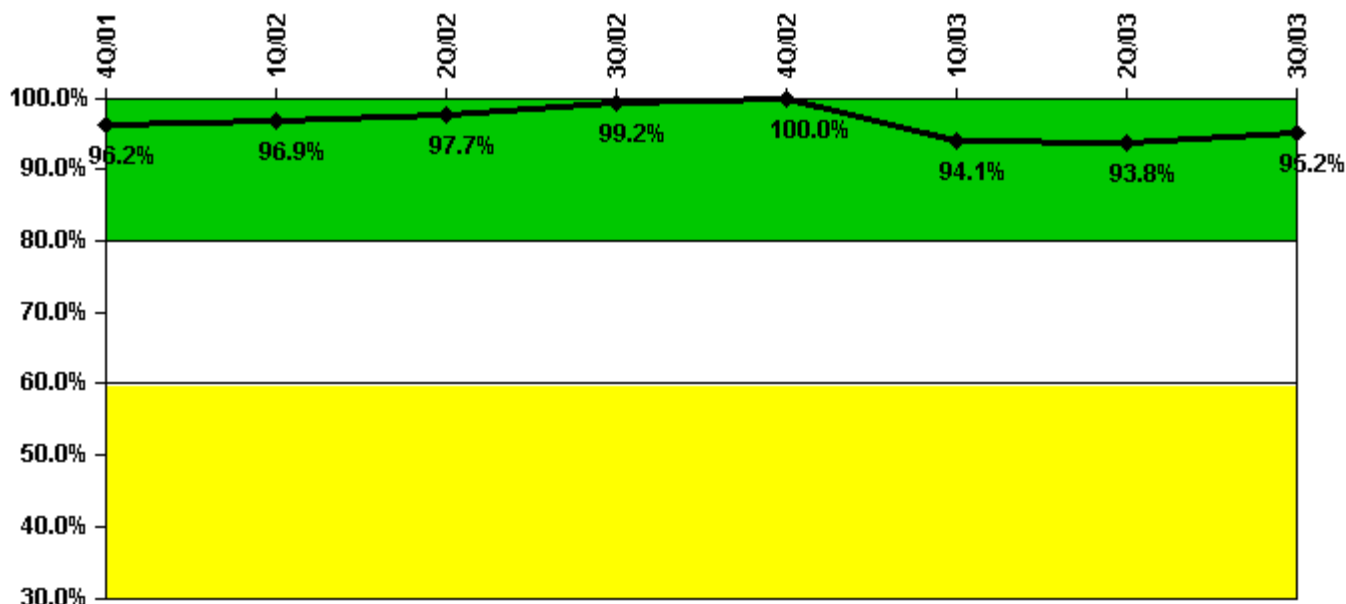
Drill/Exercise Performance	4Q/01	1Q/02	2Q/02	3Q/02	4Q/02	1Q/03	2Q/03	3Q/03
Successful opportunities	90.0	43.0	24.0	140.0	149.0	85.0	30.0	176.0
Total opportunities	104.0	46.0	34.0	150.0	159.0	87.0	33.0	192.0
Indicator value	93.4%	93.0%	91.0%	90.9%	91.5%	91.8%	91.4%	91.6%

Licensee Comments:

2Q/03: The change in the Q2 data reduced the number of drill, exercise, or actual event opportunities reported by 1 and the number successfully completed by 1. This change did not result in a change of color for this performance indicator.

1Q/03: The change in the Q1 data reduced the number of drill, exercise, or actual event opportunities reported by 8 and the number successfully completed by 7. This change did not result in a change of color for this performance indicator.

### ERO Drill Participation



Thresholds: White < 80.0% Yellow < 60.0%

#### Notes

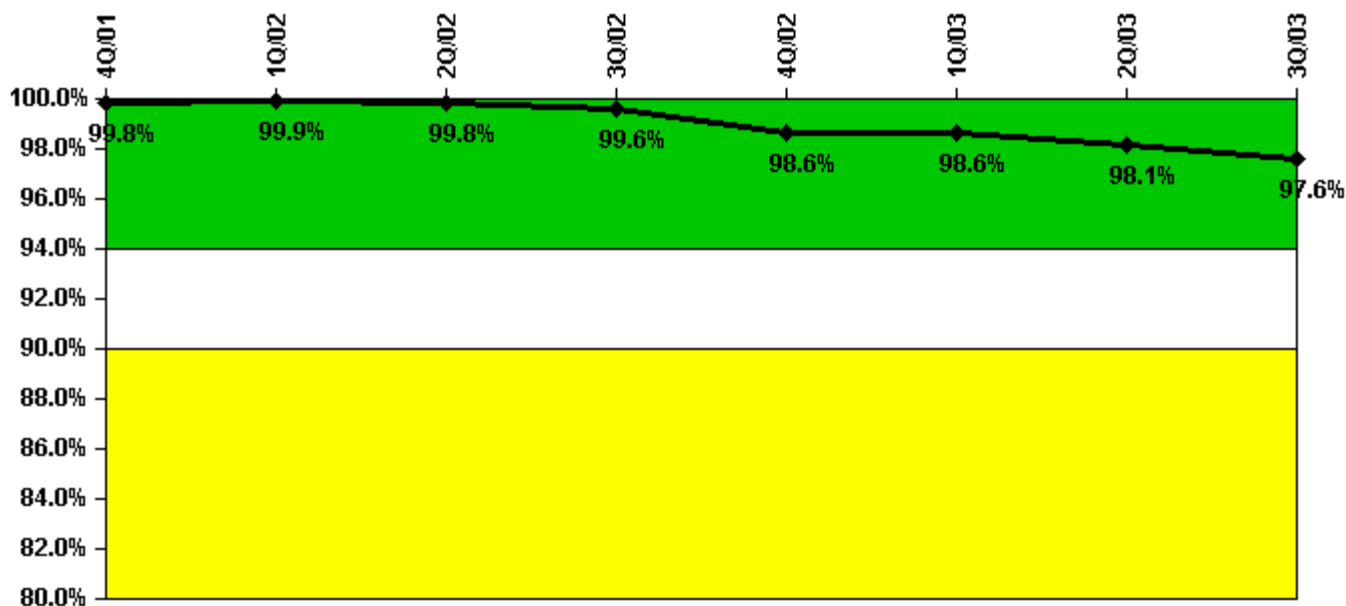
ERO Drill Participation	4Q/01	1Q/02	2Q/02	3Q/02	4Q/02	1Q/03	2Q/03	3Q/03
Participating Key personnel	125.0	127.0	125.0	130.0	131.0	143.0	135.0	138.0
Total Key personnel	130.0	131.0	128.0	131.0	131.0	152.0	144.0	145.0
Indicator value	96.2%	96.9%	97.7%	99.2%	100.0%	94.1%	93.8%	95.2%

Licensee Comments:

2Q/03: The change in the Q2 data reduced the number of key ERO members who participated in a drill, exercise, or actual event by 9. This change did not result in a change of color for this performance indicator.

1Q/03: The change in the Q1 data reduced the number of key ERO members who participated in a drill, exercise, or actual event by 8. This change did not result in a change of color for this performance indicator.

### Alert & Notification System



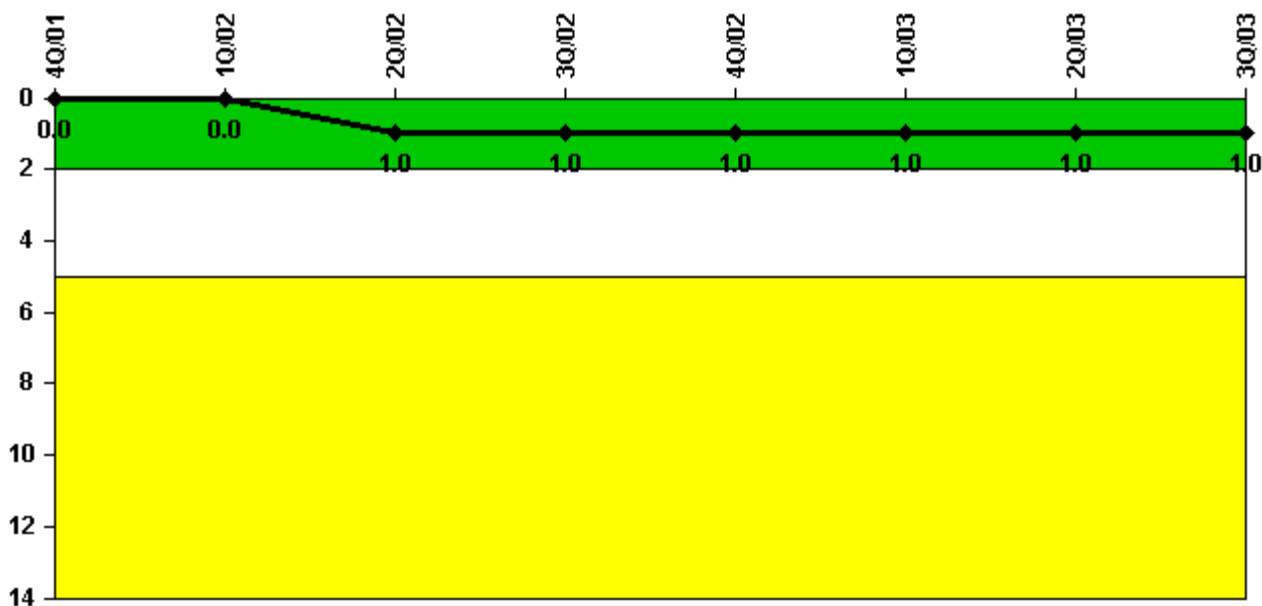
Thresholds: White < 94.0% Yellow < 90.0%

#### Notes

Alert & Notification System	4Q/01	1Q/02	2Q/02	3Q/02	4Q/02	1Q/03	2Q/03	3Q/03
Successful siren-tests	209	210	209	209	200	210	205	205
Total sirens-tests	210	210	210	210	210	210	210	210
Indicator value	99.8%	99.9%	99.8%	99.6%	98.6%	98.6%	98.1%	97.6%

Licensee Comments: none

### Occupational Exposure Control Effectiveness



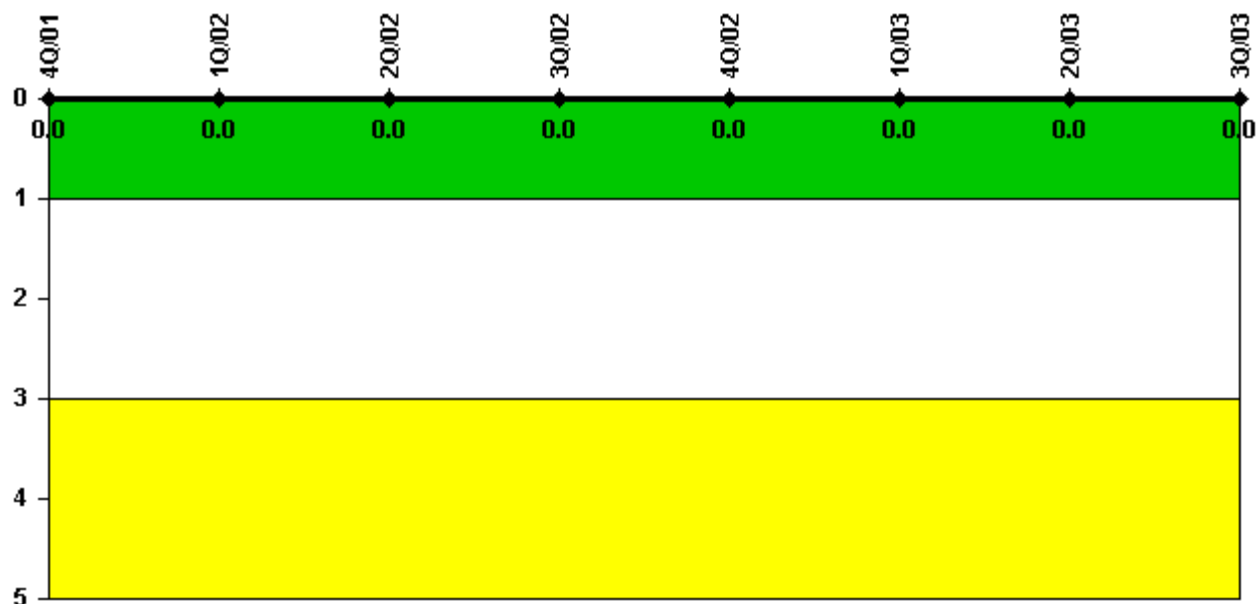
Thresholds: White > 2.0 Yellow > 5.0

#### Notes

Occupational Exposure Control Effectiveness	4Q/01	1Q/02	2Q/02	3Q/02	4Q/02	1Q/03	2Q/03	3Q/03
High radiation area occurrences	0	0	1	0	0	0	0	0
Very high radiation area occurrences	0	0	0	0	0	0	0	0
Unintended exposure occurrences	0	0	0	0	0	0	1	0
Indicator value	0	0	1	1	1	1	1	1

Licensee Comments: none

### RETS/ODCM Radiological Effluent



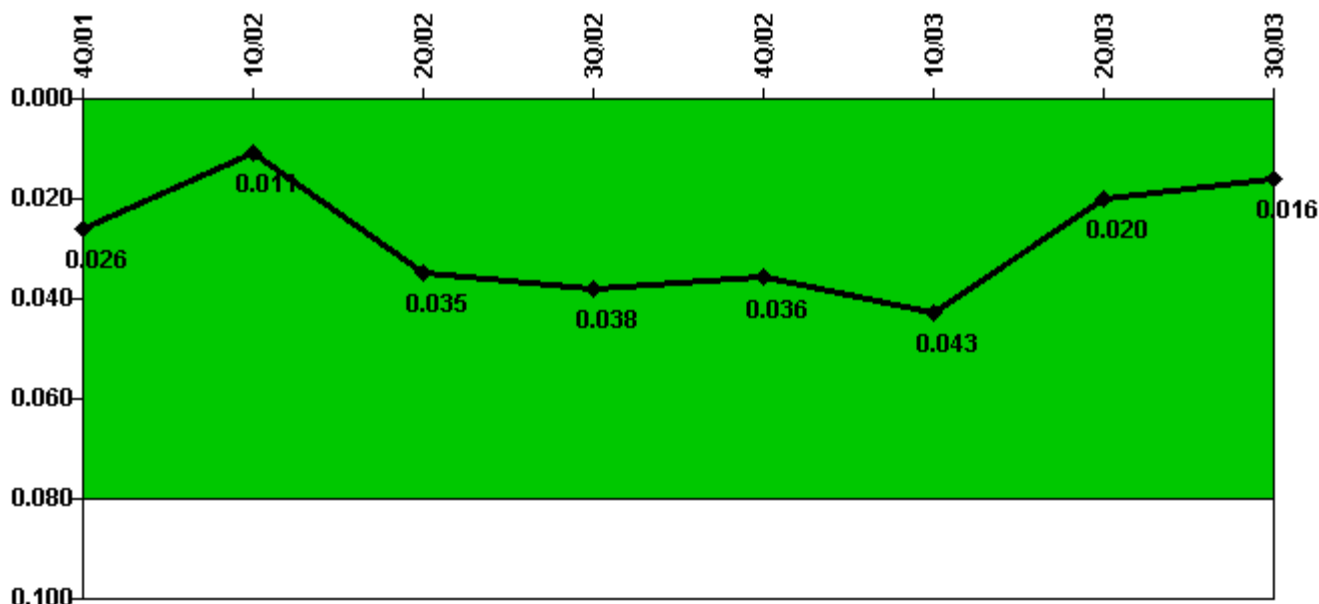
Thresholds: White > 1.0 Yellow > 3.0

#### Notes

RETS/ODCM Radiological Effluent	4Q/01	1Q/02	2Q/02	3Q/02	4Q/02	1Q/03	2Q/03	3Q/03
RETS/ODCM occurrences	0	0	0	0	0	0	0	0
Indicator value	0	0	0	0	0	0	0	0

Licensee Comments: none

### Protected Area Security Performance Index



Thresholds: White > 0.080

#### Notes

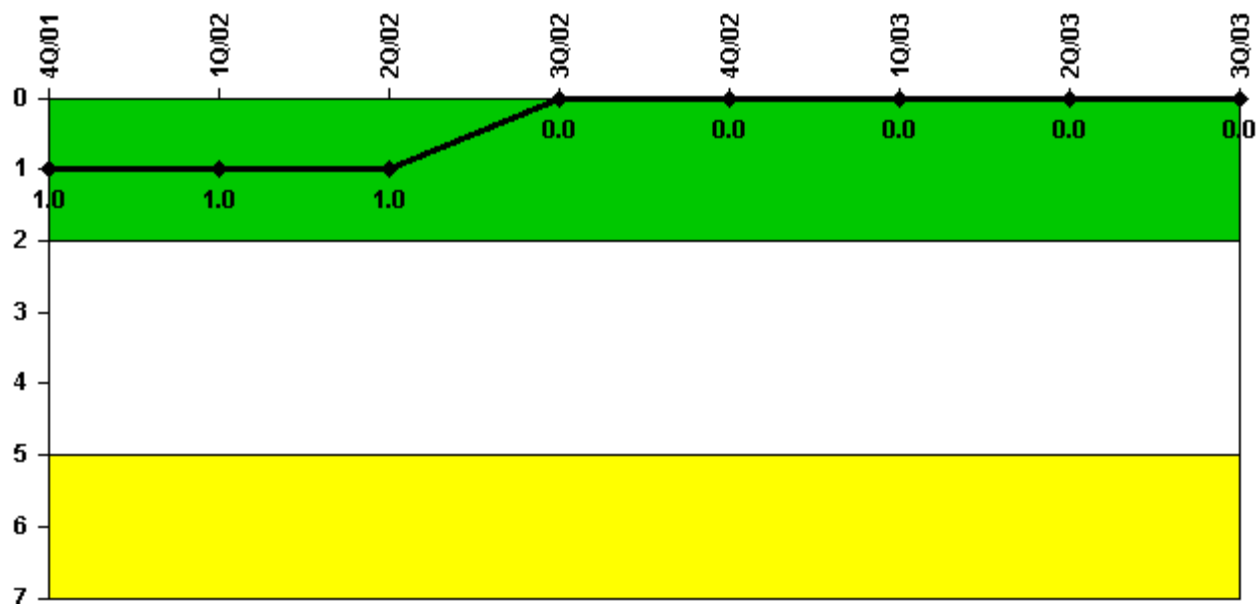
Protected Area Security Performance Index	4Q/01	1Q/02	2Q/02	3Q/02	4Q/02	1Q/03	2Q/03	3Q/03
IDS compensatory hours	103.70	28.20	680.50	111.70	52.10	263.40	25.70	25.20
CCTV compensatory hours	0	0	0	0	4.4	16.2	0	0
IDS normalization factor	1.40	1.40	1.40	1.40	1.40	1.50	1.40	1.40
CCTV normalization factor	1.0	1.0	1.0	1.0	1.0	1.0	1.0	1.0
Index Value	0.026	0.011	0.035	0.038	0.036	0.043	0.020	0.016

Licensee Comments:

3Q/03: In accordance with NEI 99-02, compensatory hours associated with scheduled equipment upgrades that are being performed and those compensatory hours for configuration issues associated with the equipment upgrades are excluded.



### Personnel Screening Program



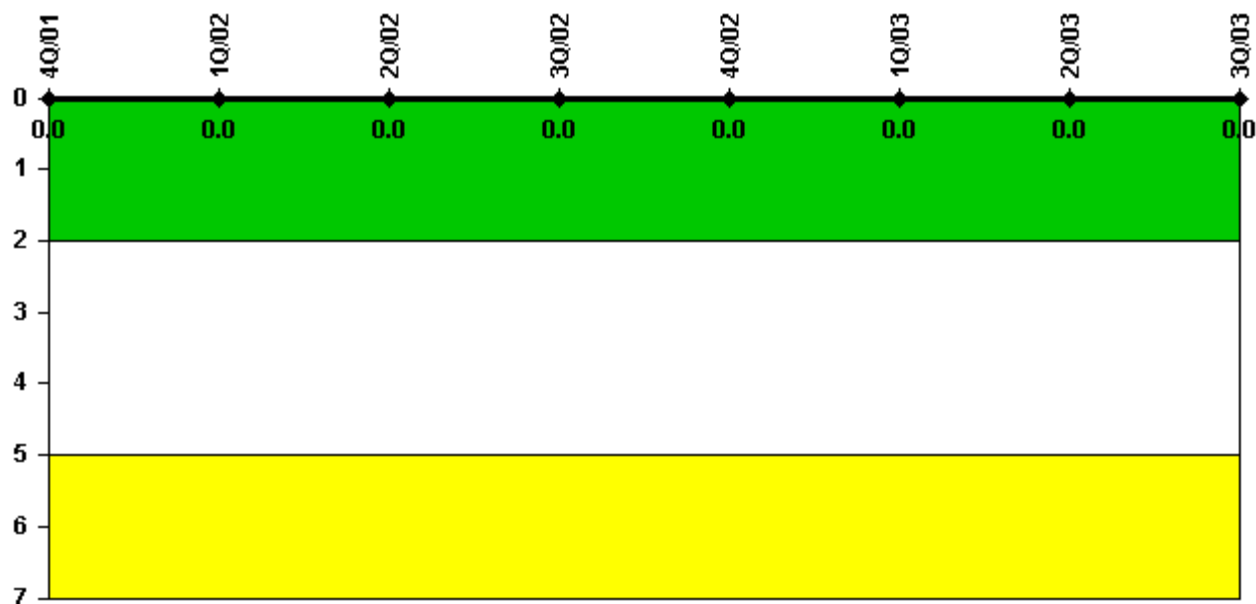
Thresholds: White > 2.0 Yellow > 5.0

#### Notes

Personnel Screening Program	4Q/01	1Q/02	2Q/02	3Q/02	4Q/02	1Q/03	2Q/03	3Q/03
Program failures	0	0	0	0	0	0	0	0
Indicator value	1	1	1	0	0	0	0	0

Licensee Comments: none

### FFD/Personnel Reliability



Thresholds: White > 2.0 Yellow > 5.0

#### Notes

FFD/Personnel Reliability	4Q/01	1Q/02	2Q/02	3Q/02	4Q/02	1Q/03	2Q/03	3Q/03
Program Failures	0	0	0	0	0	0	0	0
Indicator value	0	0	0	0	0	0	0	0

Licensee Comments: none

▲ [PI Summary](#) | [Inspection Findings Summary](#) | [Reactor Oversight Process](#)

Last Modified: October 23, 2003