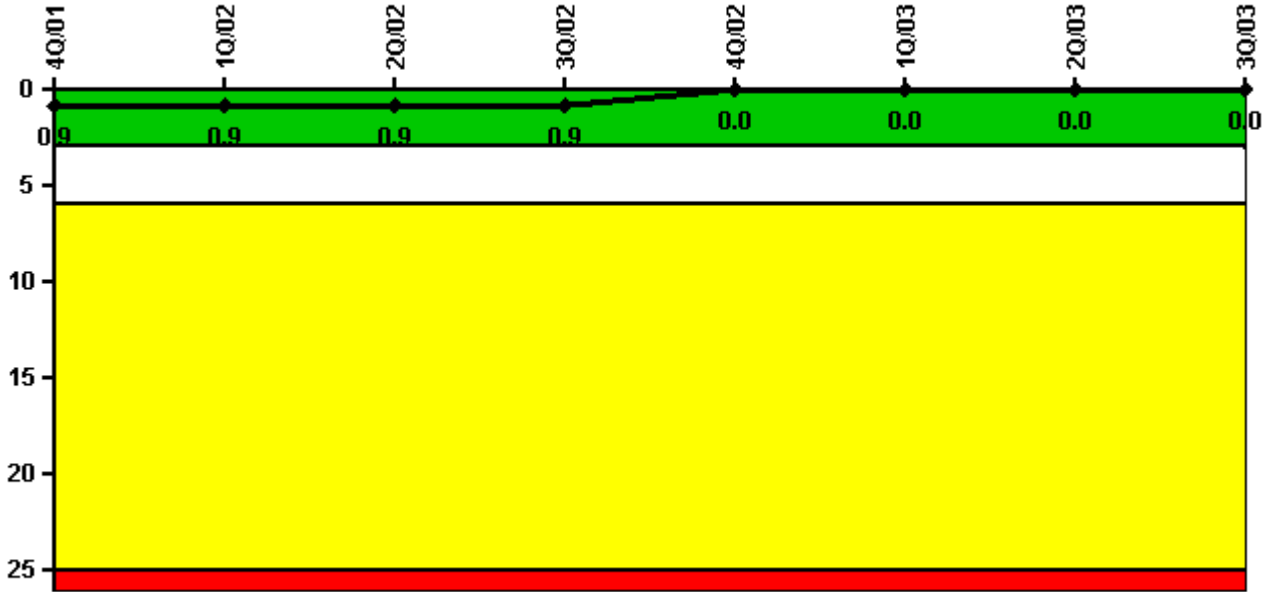


# Catawba 2

## 3Q/2003 Performance Indicators

Licensee's General Comments: none

### Unplanned Scrams per 7000 Critical Hrs



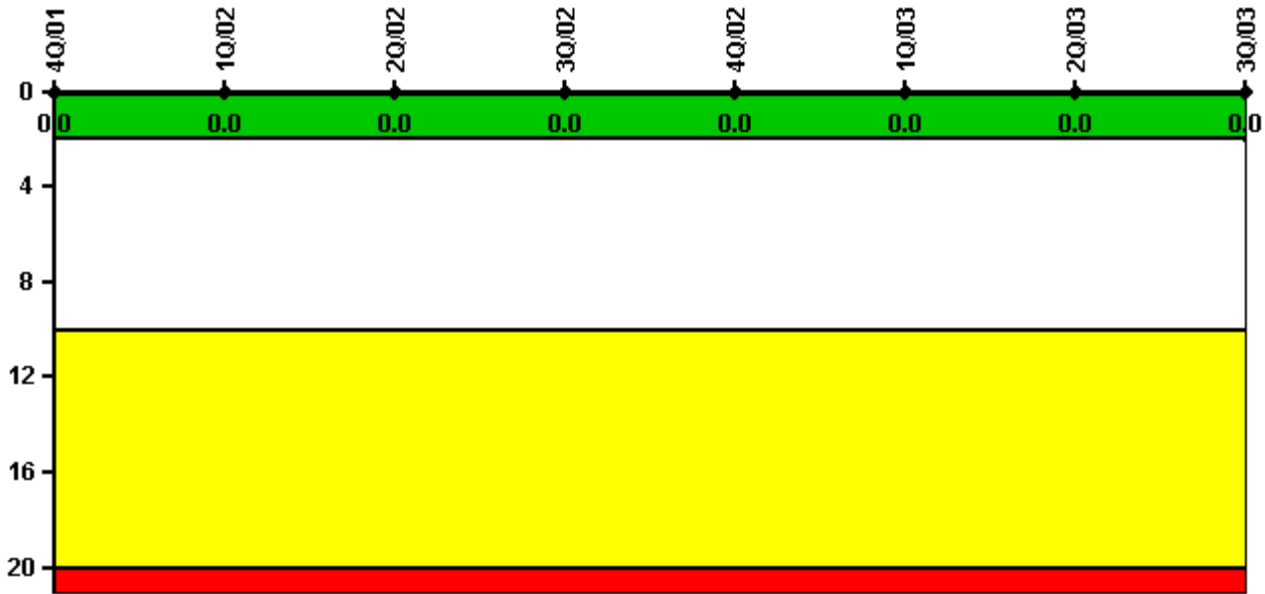
Thresholds: White > 3.0 Yellow > 6.0 Red > 25.0

### Notes

Unplanned Scrams per 7000 Critical Hrs	4Q/01	1Q/02	2Q/02	3Q/02	4Q/02	1Q/03	2Q/03	3Q/03
Unplanned scrams	1.0	0	0	0	0	0	0	0
Critical hours	1364.5	2160.0	2183.0	2208.0	2209.0	1548.5	2183.0	2208.0
Indicator value	0.9	0.9	0.9	0.9	0	0	0	0

Licensee Comments: none

### Scrams with Loss of Normal Heat Removal



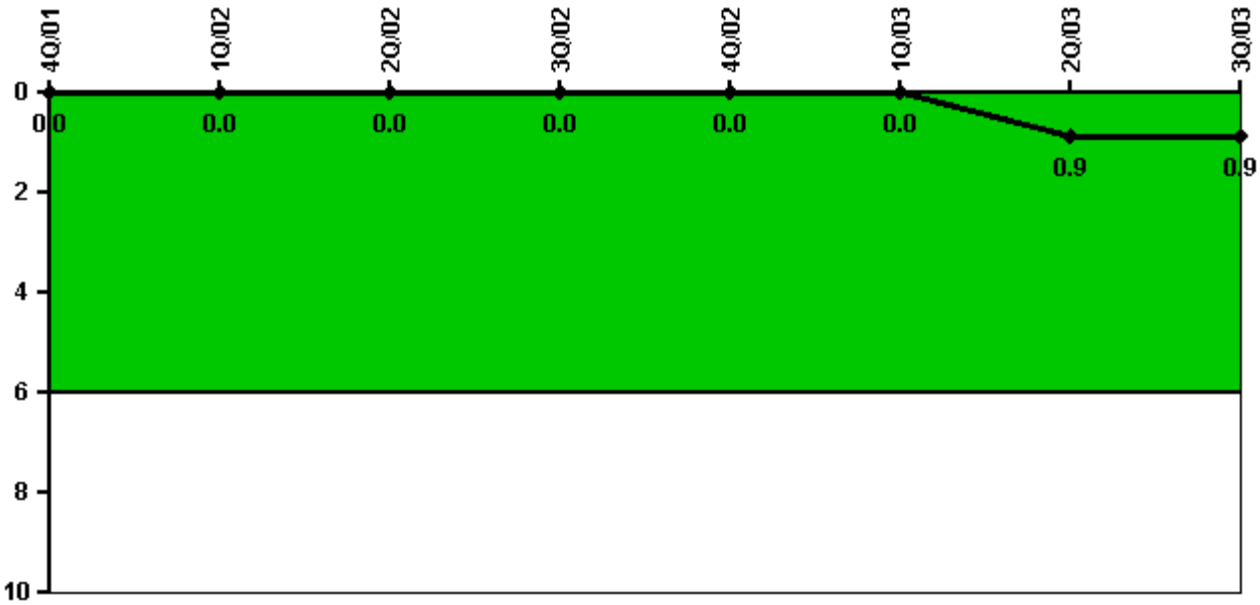
Thresholds: White > 2.0 Yellow > 10.0 Red > 20.0

#### Notes

Scrams with Loss of Normal Heat Removal	4Q/01	1Q/02	2Q/02	3Q/02	4Q/02	1Q/03	2Q/03	3Q/03
Scrams	0	0	0	0	0	0	0	0
Indicator value	0	0	0	0	0	0	0	0

Licensee Comments: none

### Unplanned Power Changes per 7000 Critical Hrs



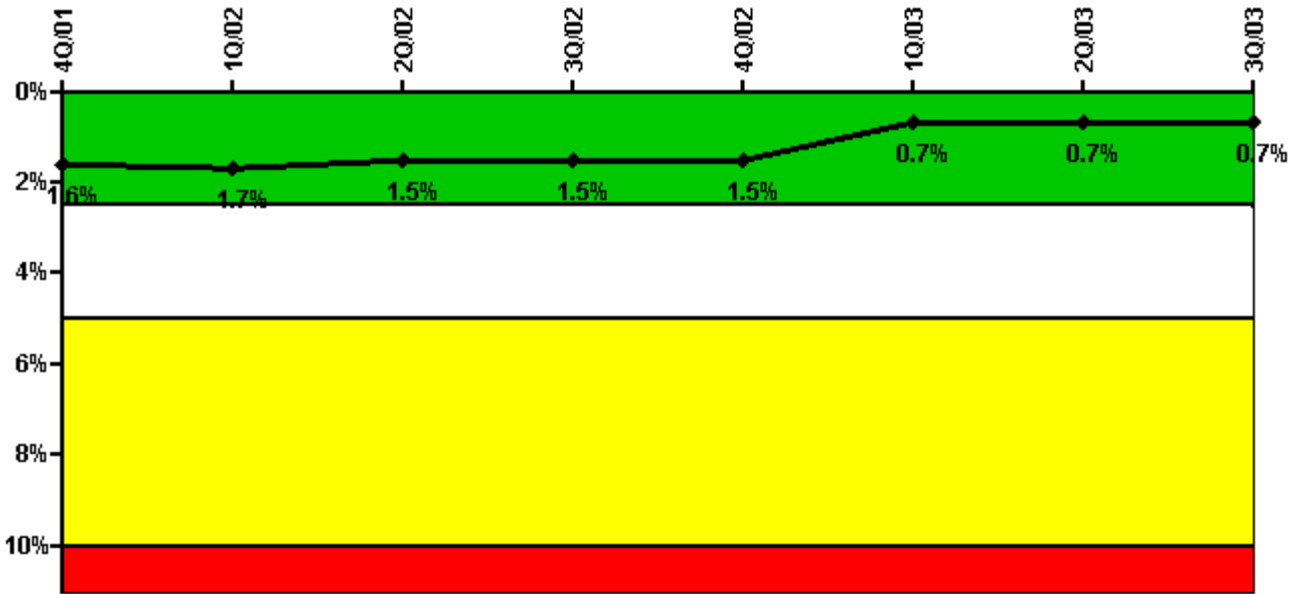
Thresholds: White > 6.0

#### Notes

Unplanned Power Changes per 7000 Critical Hrs	4Q/01	1Q/02	2Q/02	3Q/02	4Q/02	1Q/03	2Q/03	3Q/03
Unplanned power changes	0	0	0	0	0	0	1.0	0
Critical hours	1364.5	2160.0	2183.0	2208.0	2209.0	1548.5	2183.0	2208.0
Indicator value	0	0	0	0	0	0	0.9	0.9

Licensee Comments: none

### Safety System Unavailability, Emergency AC Power



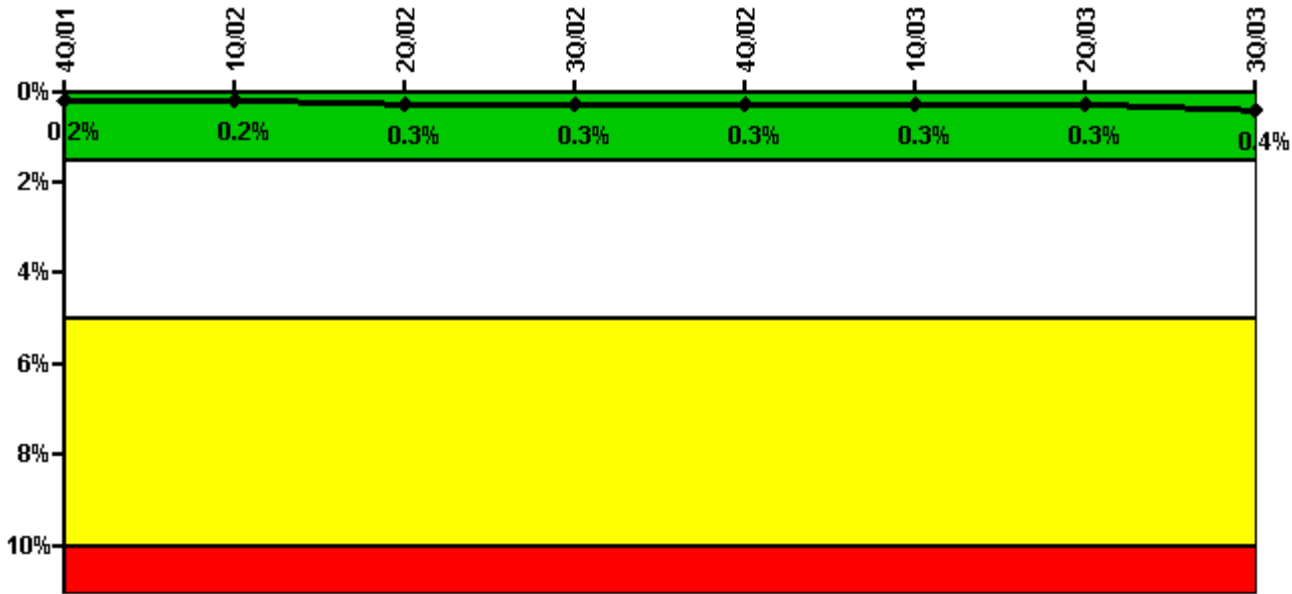
Thresholds: White > 2.5% Yellow > 5.0% Red > 10.0%

#### Notes

Safety System Unavailability, Emergency AC Power	4Q/01	1Q/02	2Q/02	3Q/02	4Q/02	1Q/03	2Q/03	3Q/03
<b>Train 1</b>								
Planned unavailable hours	1.87	0	8.60	0	38.71	63.00	0	33.42
Unplanned unavailable hours	0	62.11	0	0.77	0	0	0	0
Fault exposure hours	0	0	0	0	0	0	0	0
Effective Reset hours	0	0	0	0	0	0	0	0
Required hours	2209.00	2160.00	2184.00	2208.00	2209.00	2160.00	2183.00	2208.00
<b>Train 2</b>								
Planned unavailable hours	1.77	0	12.92	0	12.57	48.75	35.15	1.65
Unplanned unavailable hours	0	0	0	3.00	0	0	0	0
Fault exposure hours	0	0	0	0	0	0	0	0
Effective Reset hours	0	0	0	0	0	0	0	0
Required hours	2208.00	2160.00	2184.00	2208.00	2209.00	2160.00	2183.00	2208.00
Indicator value	1.6%	1.7%	1.5%	1.5%	1.5%	0.7%	0.7%	0.7%

Licensee Comments: none

### Safety System Unavailability, High Pressure Injection System (HPSI)



Thresholds: White > 1.5% Yellow > 5.0% Red > 10.0%

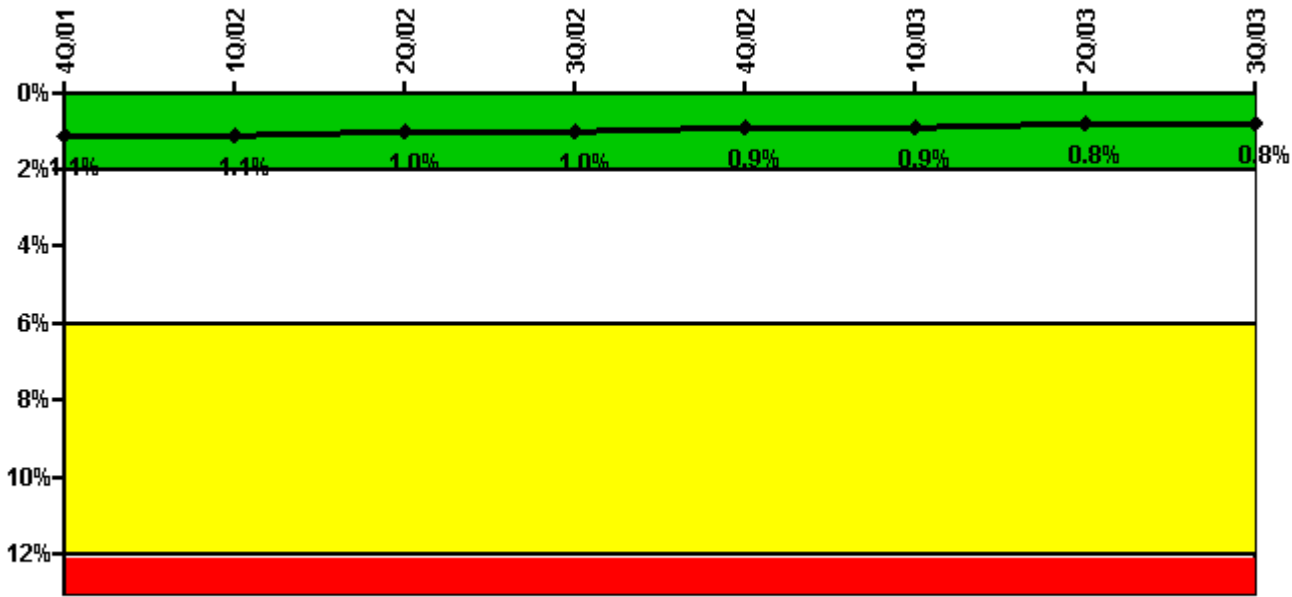
**Notes**

Safety System Unavailability, High Pressure Injection System (HPSI)	4Q/01	1Q/02	2Q/02	3Q/02	4Q/02	1Q/03	2Q/03	3Q/03
<b>Train 1</b>								
Planned unavailable hours	1.10	0.30	18.70	0	8.40	0	0	8.70
Unplanned unavailable hours	0	0	0	0	0	0	0	0
Fault exposure hours	0	0	0	0	0	0	0	0
Effective Reset hours	0	0	0	0	0	0	0	0
Required hours	1364.50	2160.00	2183.00	2208.00	2209.00	1548.50	2183.00	2208.00
<b>Train 2</b>								
Planned unavailable hours	0.80	2.67	14.20	9.30	1.10	10.10	13.80	9.70
Unplanned unavailable hours	0	0	6.30	17.60	0	0	0	0
Fault exposure hours	0	0	0	0	0	0	0	0
Effective Reset hours	0	0	0	0	0	0	0	0
Required hours	1364.50	2160.00	2183.00	2208.00	2209.00	1548.50	2183.00	2208.00
<b>Train 3</b>								
Planned unavailable hours	0	11.80	1.20	2.50	13.90	0	10.50	13.50
Unplanned unavailable hours	0	0	0	0	0	0	0	0
Fault exposure hours	0	0	0	0	0	0	0	0
Effective Reset hours	0	0	0	0	0	0	0	0
Required hours	1364.50	2160.00	2183.00	2208.00	2209.00	1548.50	2183.00	2208.00
<b>Train 4</b>								
Planned unavailable hours	0	1.57	18.40	4.20	10.80	10.10	29.40	26.20
Unplanned unavailable hours	0	0	6.30	17.60	0	0	0	0
Fault exposure hours	0	0	0	0	0	0	0	0
Effective Reset hours	0	0	0	0	0	0	0	0

Required hours	1364.50	2160.00	2183.00	2208.00	2209.00	1548.50	2183.00	2208.00
Indicator value	0.2%	0.2%	0.3%	0.3%	0.3%	0.3%	0.3%	0.4%

Licensee Comments: none

### Safety System Unavailability, Heat Removal System (AFW)



Thresholds: White > 2.0% Yellow > 6.0% Red > 12.0%

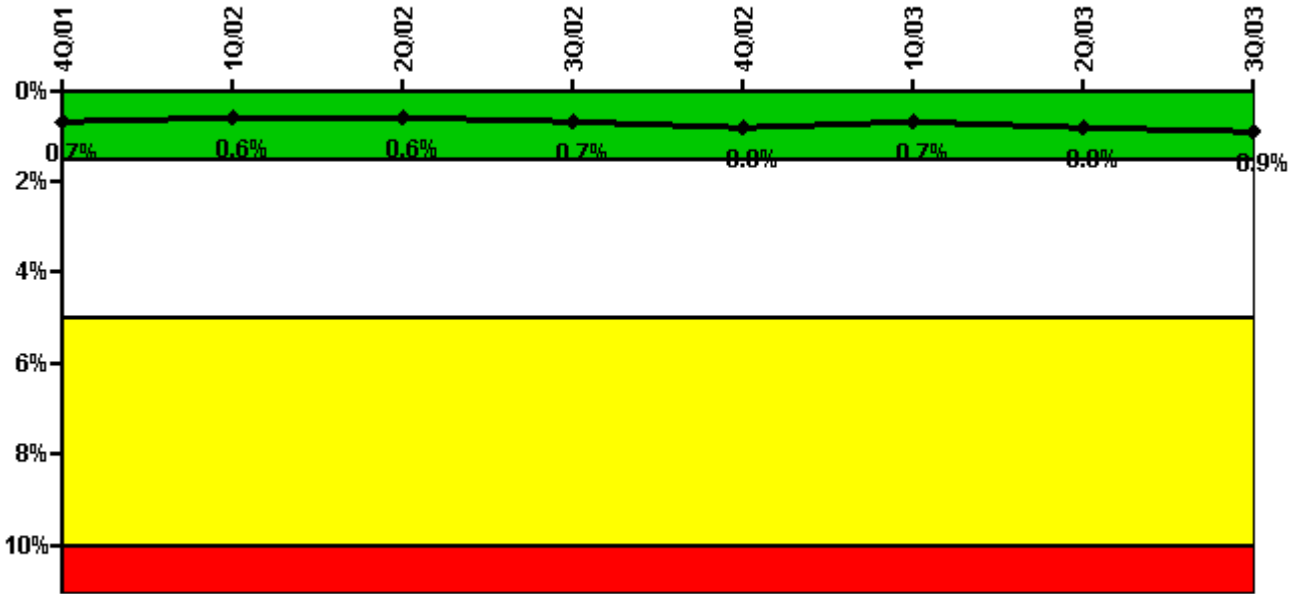
### Notes

Safety System Unavailability, Heat Removal System (AFW)	4Q/01	1Q/02	2Q/02	3Q/02	4Q/02	1Q/03	2Q/03	3Q/03
<b>Train 1</b>								
Planned unavailable hours	3.72	16.75	24.96	8.67	39.08	21.87	11.27	22.40
Unplanned unavailable hours	0	0	0	0	0	0	0	0
Fault exposure hours	0	0	0	0	0	0	0	0
Effective Reset hours	0	0	0	0	0	0	0	0
Required hours	1464.00	2160.00	2183.00	2208.00	2209.00	1591.60	2183.00	2208.00
<b>Train 2</b>								
Planned unavailable hours	0.25	11.25	16.08	47.84	1.93	43.87	15.43	22.92
Unplanned unavailable hours	0	0	6.30	0	1.07	0	0	0
Fault exposure hours	0	0	0	0	0	0	0	0
Effective Reset hours	0	0	0	0	0	0	0	0
Required hours	1464.00	2160.00	2183.00	2208.00	2209.00	1591.60	2183.00	2208.00
<b>Train 3</b>								

Planned unavailable hours	3.17	33.40	20.00	13.92	0.68	7.02	19.47	13.17
Unplanned unavailable hours	0	0	0	0	14.75	1.83	0	0
Fault exposure hours	0	0	0	0	0	0	0	0
Effective Reset hours	0	0	0	0	0	0	0	0
Required hours	1464.00	2160.00	2183.00	2208.00	2209.00	1591.60	2183.00	2208.00
Indicator value	1.1%	1.1%	1.0%	1.0%	0.9%	0.9%	0.8%	0.8%

Licensee Comments: none

### Safety System Unavailability, Residual Heat Removal System



Thresholds: White > 1.5% Yellow > 5.0% Red > 10.0%

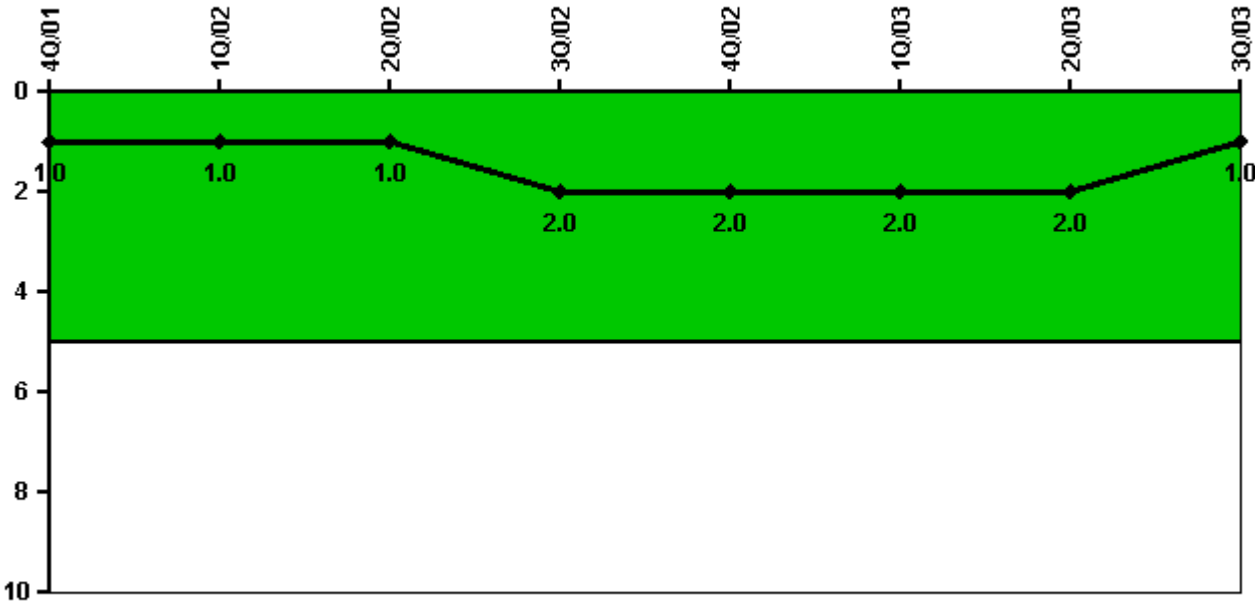
### Notes

Safety System Unavailability, Residual Heat Removal System	4Q/01	1Q/02	2Q/02	3Q/02	4Q/02	1Q/03	2Q/03	3Q/03
<b>Train 1</b>								
Planned unavailable hours	5.13	0	25.90	0	23.20	0	0	23.30
Unplanned unavailable hours	0	0	0	0	0	0	0	0
Fault exposure hours	0	0	0	0	0	0	0	0
Effective Reset hours	0	0	0	0	0	0	0	0
Required hours	2209.00	2160.00	2183.00	2208.00	2209.00	2160.00	2183.00	2208.00
<b>Train 2</b>								
Planned unavailable hours	0	26.72	13.20	0	26.00	60.50	83.10	21.30
Unplanned unavailable hours	0	0	32.50	58.80	0	0	0	0

Fault exposure hours	0	0	0	0	0	0	0	0
Effective Reset hours	0	0	0	0	0	0	0	0
Required hours	2209.00	2160.00	2183.00	2208.00	2209.00	2160.00	2183.00	2208.00
Indicator value	0.7%	0.6%	0.6%	0.7%	0.8%	0.7%	0.8%	0.9%

Licensee Comments: none

### Safety System Functional Failures (PWR)



Thresholds: White > 5.0

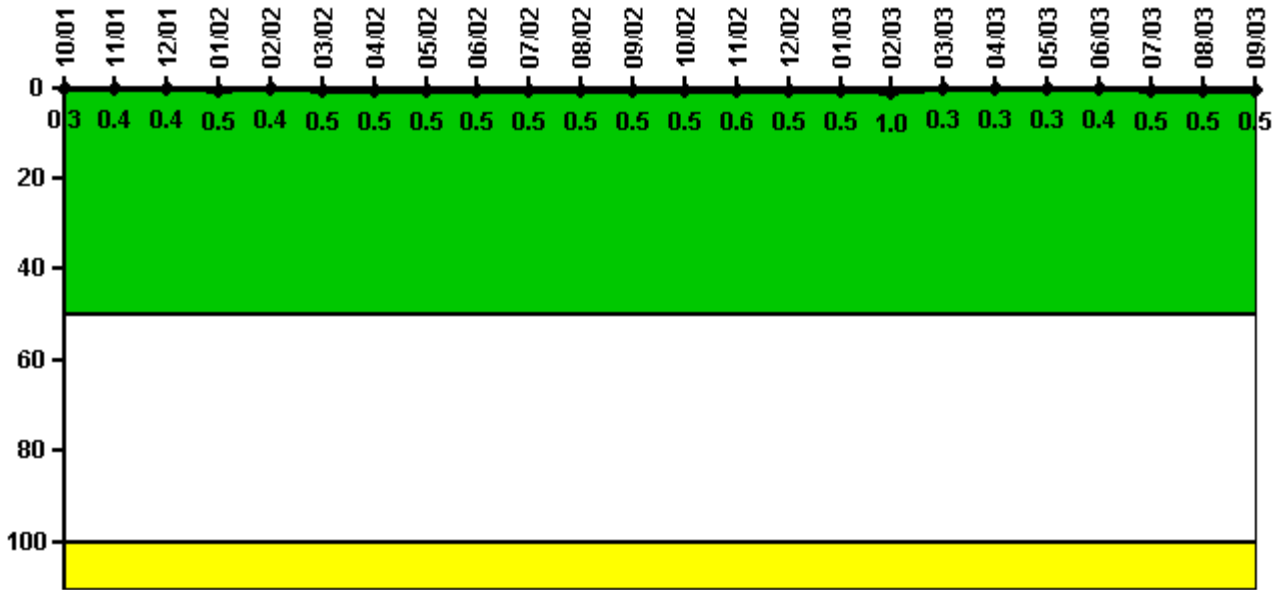
### Notes

Safety System Functional Failures (PWR)	4Q/01	1Q/02	2Q/02	3Q/02	4Q/02	1Q/03	2Q/03	3Q/03
Safety System Functional Failures	0	0	1	1	0	0	1	0
Indicator value	1	1	1	2	2	2	2	1

Licensee Comments: none



### Reactor Coolant System Activity



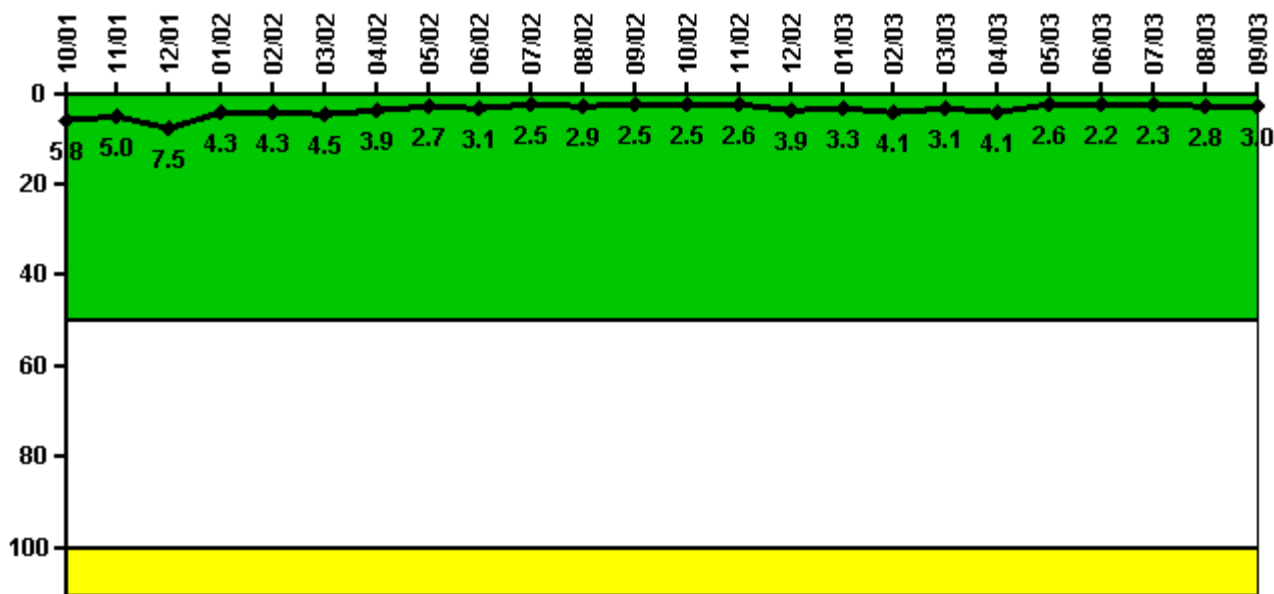
Thresholds: White > 50.0 Yellow > 100.0

**Notes**

Reactor Coolant System Activity	10/01	11/01	12/01	1/02	2/02	3/02	4/02	5/02	6/02	7/02	8/02	9/02
Maximum activity	0.000170	0.000260	0.000270	0.000290	0.000280	0.000310	0.000340	0.000290	0.000310	0.000330	0.000320	0.000340
Technical specification limit	0.1	0.1	0.1	0.1	0.1	0.1	0.1	0.1	0.1	0.1	0.1	0.1
Indicator value	0.3	0.4	0.4	0.5	0.4	0.5	0.5	0.5	0.5	0.5	0.5	0.5
Reactor Coolant System Activity	10/02	11/02	12/02	1/03	2/03	3/03	4/03	5/03	6/03	7/03	8/03	9/03
Maximum activity	0.000350	0.000380	0.000350	0.000340	0.000622	0.000170	0.000190	0.000213	0.000245	0.000290	0.000310	0.000310
Technical specification limit	0.1	0.1	0.1	0.1	0.1	0.1	0.1	0.1	0.1	0.1	0.1	0.1
Indicator value	0.5	0.6	0.5	0.5	1.0	0.3	0.3	0.3	0.4	0.5	0.5	0.5

Licensee Comments: none

### Reactor Coolant System Leakage



Thresholds: White > 50.0 Yellow > 100.0

#### Notes

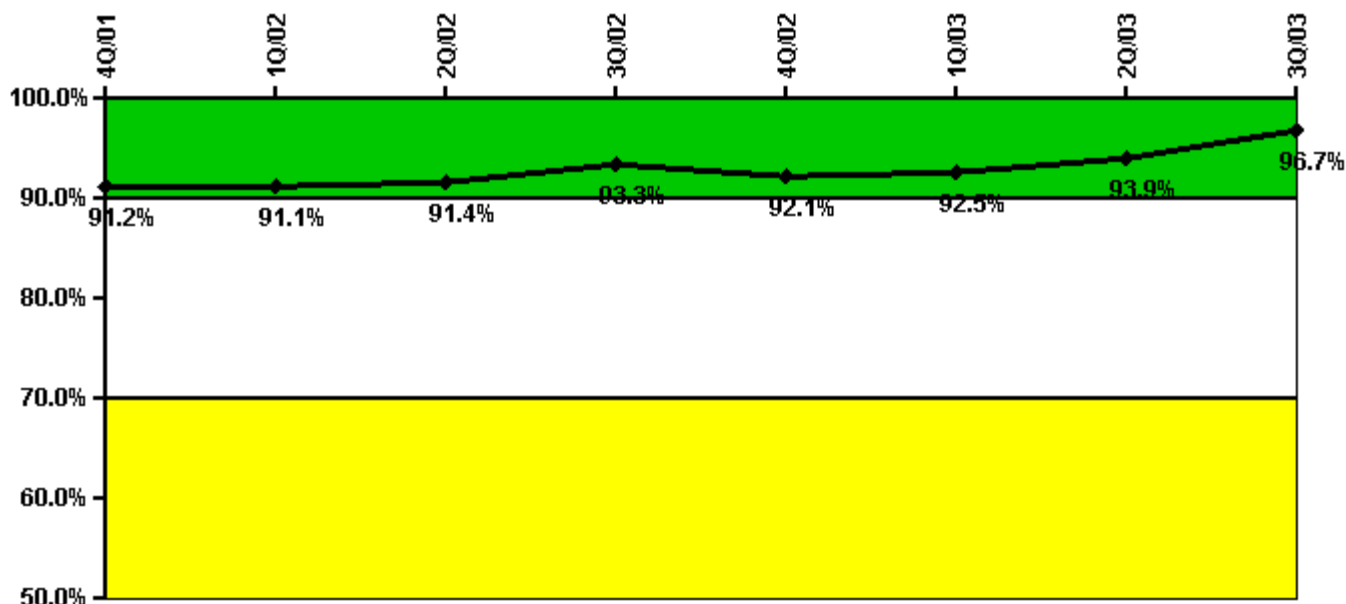
Reactor Coolant System Leakage	10/01	11/01	12/01	1/02	2/02	3/02	4/02	5/02	6/02	7/02	8/02	9/02
Maximum leakage	0.577	0.497	0.747	0.428	0.430	0.449	0.391	0.271	0.307	0.250	0.288	0.251
Technical specification limit	10.0	10.0	10.0	10.0	10.0	10.0	10.0	10.0	10.0	10.0	10.0	10.0
Indicator value	5.8	5.0	7.5	4.3	4.3	4.5	3.9	2.7	3.1	2.5	2.9	2.5

Reactor Coolant System Leakage	10/02	11/02	12/02	1/03	2/03	3/03	4/03	5/03	6/03	7/03	8/03	9/03
Maximum leakage	0.253	0.256	0.387	0.332	0.409	0.314	0.406	0.260	0.220	0.230	0.276	0.302
Technical specification limit	10.0	10.0	10.0	10.0	10.0	10.0	10.0	10.0	10.0	10.0	10.0	10.0
Indicator value	2.5	2.6	3.9	3.3	4.1	3.1	4.1	2.6	2.2	2.3	2.8	3.0

Licensee Comments: none

### Drill/Exercise Performance



Thresholds: White < 90.0% Yellow < 70.0%

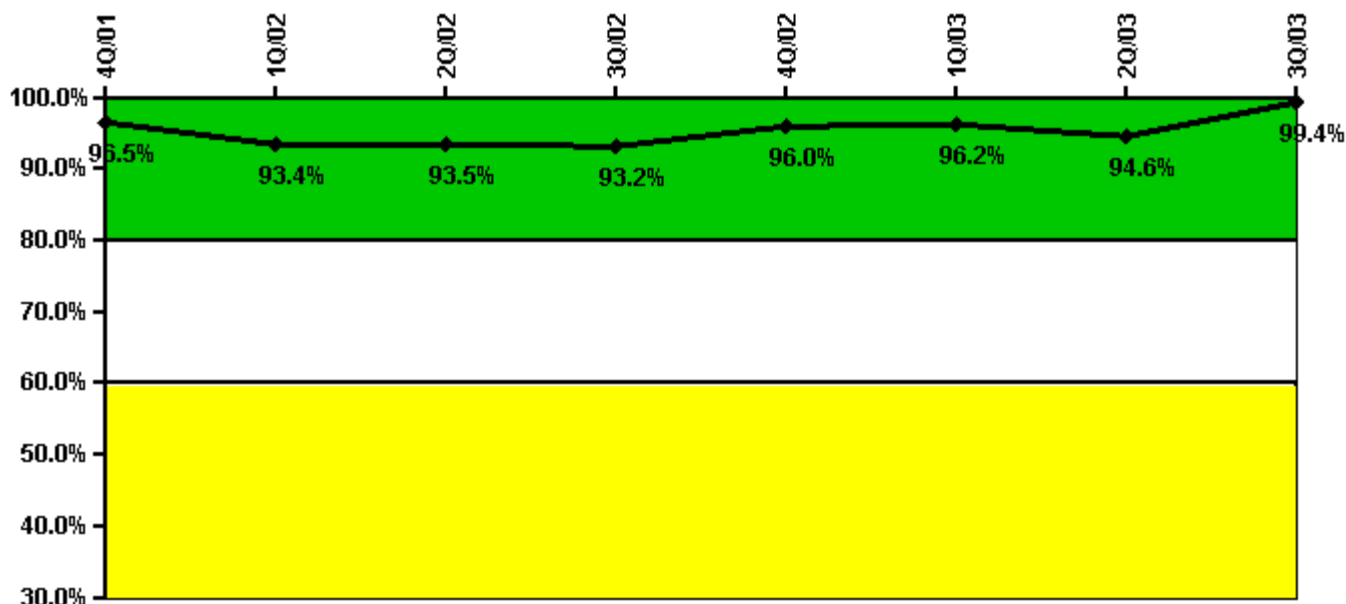
#### Notes

Drill/Exercise Performance	4Q/01	1Q/02	2Q/02	3Q/02	4Q/02	1Q/03	2Q/03	3Q/03
Successful opportunities	12.0	16.0	8.0	71.0	40.0	18.0	78.0	80.0
Total opportunities	12.0	16.0	8.0	74.0	46.0	18.0	78.0	82.0
Indicator value	91.2%	91.1%	91.4%	93.3%	92.1%	92.5%	93.9%	96.7%

Licensee Comments:

2Q/03: Data from licensed operator exams was inadvertently omitted from original 2Q2003 submittal.

### ERO Drill Participation



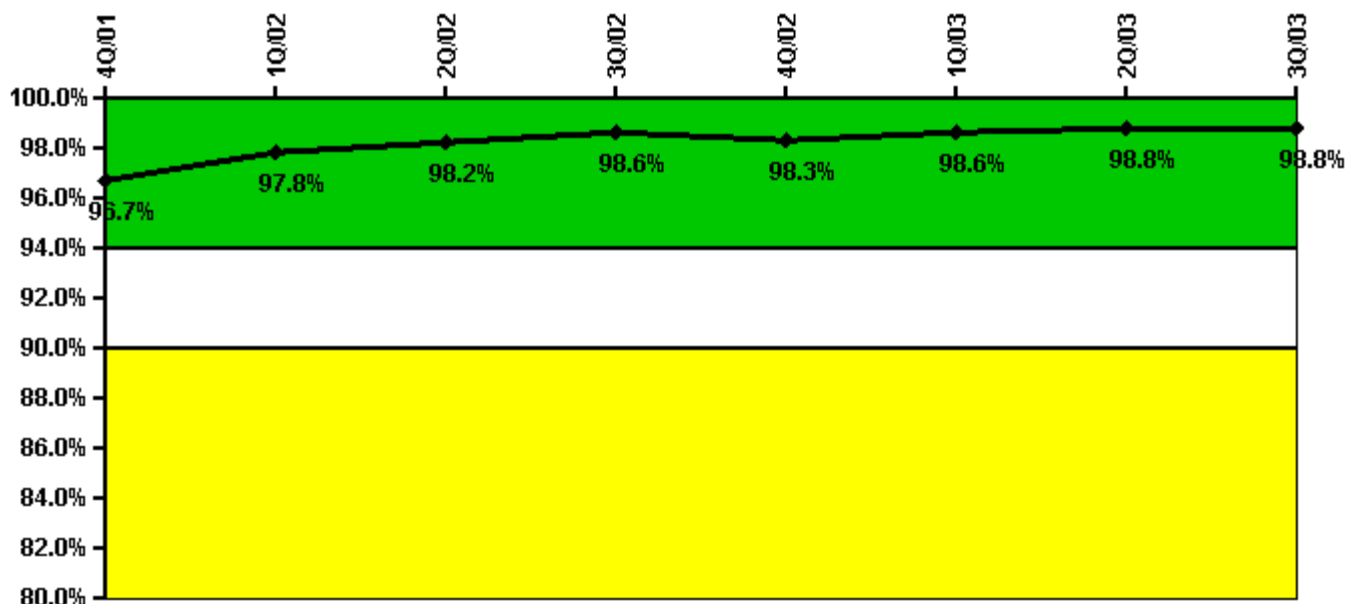
Thresholds: White < 80.0% Yellow < 60.0%

#### Notes

ERO Drill Participation	4Q/01	1Q/02	2Q/02	3Q/02	4Q/02	1Q/03	2Q/03	3Q/03
Participating Key personnel	191.0	184.0	186.0	177.0	192.0	177.0	175.0	159.0
Total Key personnel	198.0	197.0	199.0	190.0	200.0	184.0	185.0	160.0
Indicator value	96.5%	93.4%	93.5%	93.2%	96.0%	96.2%	94.6%	99.4%

Licensee Comments: none

### Alert & Notification System



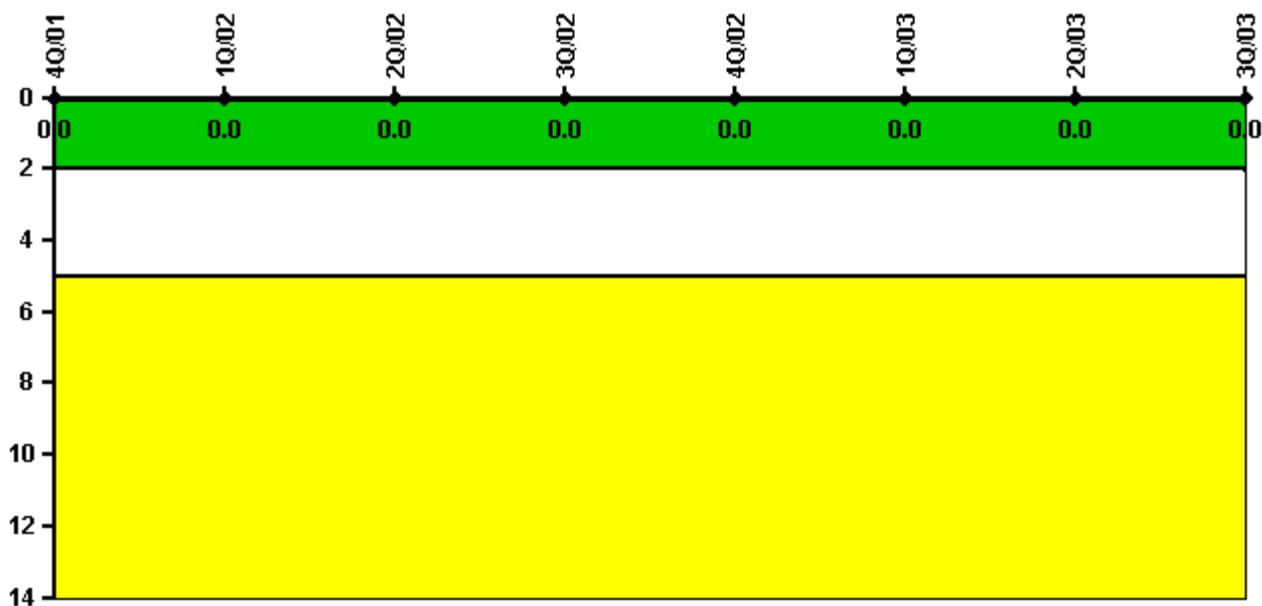
Thresholds: White < 94.0% Yellow < 90.0%

#### Notes

Alert & Notification System	4Q/01	1Q/02	2Q/02	3Q/02	4Q/02	1Q/03	2Q/03	3Q/03
Successful siren-tests	2162	2337	2253	2251	2248	2220	2386	2457
Total sirens-tests	2186	2375	2288	2281	2302	2225	2403	2492
Indicator value	96.7%	97.8%	98.2%	98.6%	98.3%	98.6%	98.8%	98.8%

Licensee Comments: none

### Occupational Exposure Control Effectiveness



Thresholds: White > 2.0 Yellow > 5.0

#### Notes

Occupational Exposure Control Effectiveness	4Q/01	1Q/02	2Q/02	3Q/02	4Q/02	1Q/03	2Q/03	3Q/03
High radiation area occurrences	0	0	0	0	0	0	0	0
Very high radiation area occurrences	0	0	0	0	0	0	0	0
Unintended exposure occurrences	0	0	0	0	0	0	0	0
Indicator value	0	0	0	0	0	0	0	0

Licensee Comments: none

### RETS/ODCM Radiological Effluent



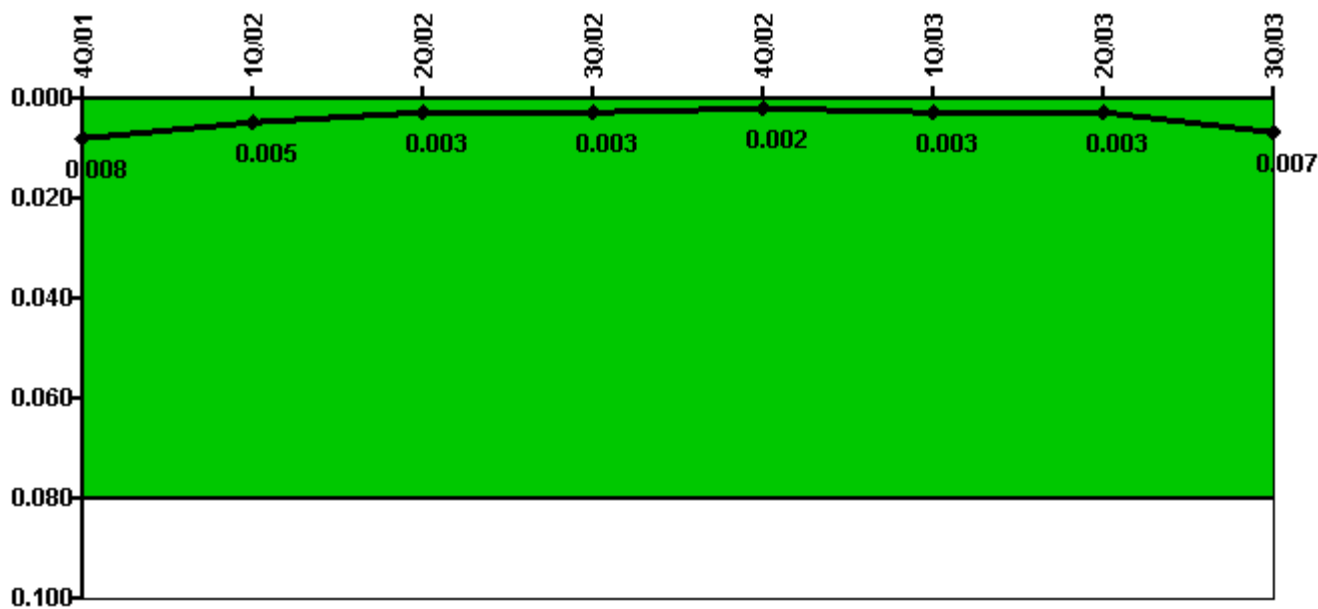
Thresholds: White > 1.0 Yellow > 3.0

#### Notes

RETS/ODCM Radiological Effluent	4Q/01	1Q/02	2Q/02	3Q/02	4Q/02	1Q/03	2Q/03	3Q/03
RETS/ODCM occurrences	0	0	0	0	0	0	0	0
Indicator value	0	0	0	0	0	0	0	0

Licensee Comments: none

### Protected Area Security Performance Index



Thresholds: White > 0.080

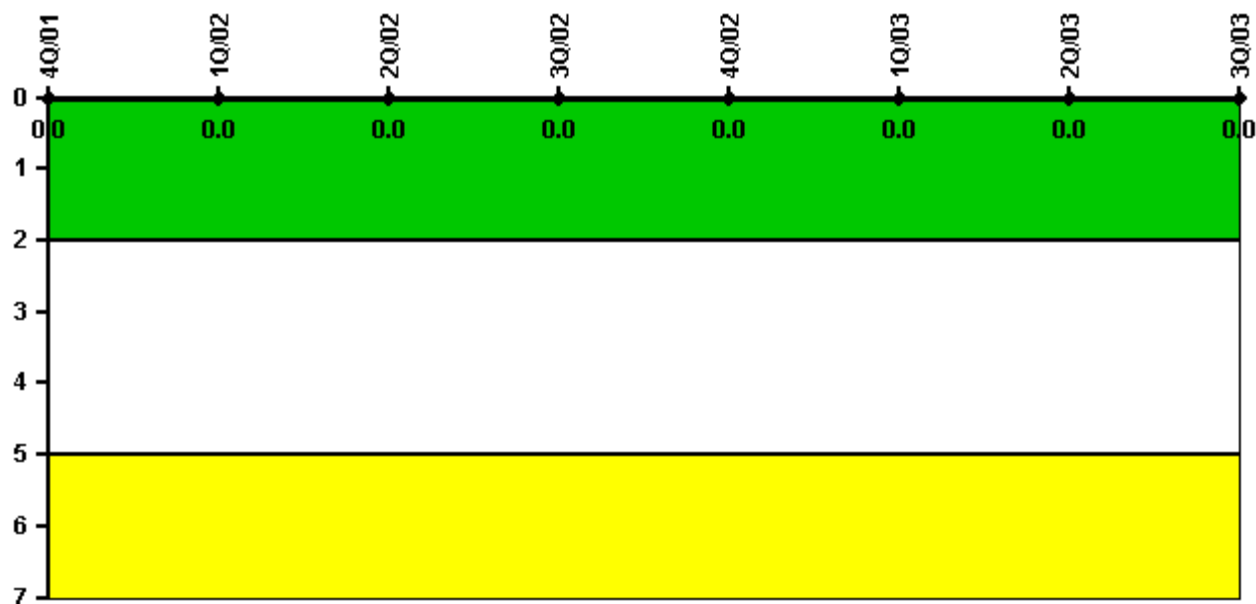
#### Notes

Protected Area Security Performance Index	4Q/01	1Q/02	2Q/02	3Q/02	4Q/02	1Q/03	2Q/03	3Q/03
IDS compensatory hours	93.50	20.00	5.10	2.10	62.30	29.00	28.50	146.20
CCTV compensatory hours	2.5	0	0	0	0	3.6	0	7.5
IDS normalization factor	2.45	2.45	2.45	2.45	2.45	2.45	2.45	2.45
CCTV normalization factor	1.0	1.0	1.0	1.0	1.0	1.0	1.0	1.0
Index Value	0.008	0.005	0.003	0.003	0.002	0.003	0.003	0.007

Licensee Comments: none



### Personnel Screening Program



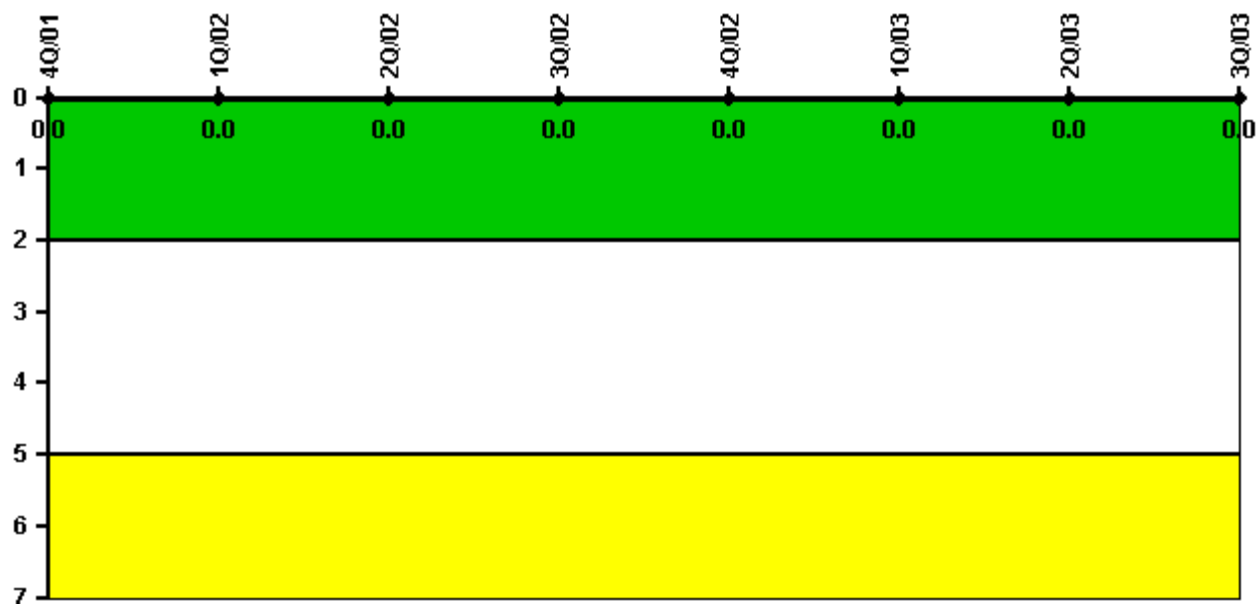
Thresholds: White > 2.0 Yellow > 5.0

#### Notes

Personnel Screening Program	4Q/01	1Q/02	2Q/02	3Q/02	4Q/02	1Q/03	2Q/03	3Q/03
Program failures	0	0	0	0	0	0	0	0
Indicator value	0	0	0	0	0	0	0	0

Licensee Comments: none

### FFD/Personnel Reliability



Thresholds: White > 2.0 Yellow > 5.0

#### Notes

FFD/Personnel Reliability	4Q/01	1Q/02	2Q/02	3Q/02	4Q/02	1Q/03	2Q/03	3Q/03
Program Failures	0	0	0	0	0	0	0	0
Indicator value	0	0	0	0	0	0	0	0

Licensee Comments: none

▲ [PI Summary](#) | [Inspection Findings Summary](#) | [Reactor Oversight Process](#)

Last Modified: October 22, 2003