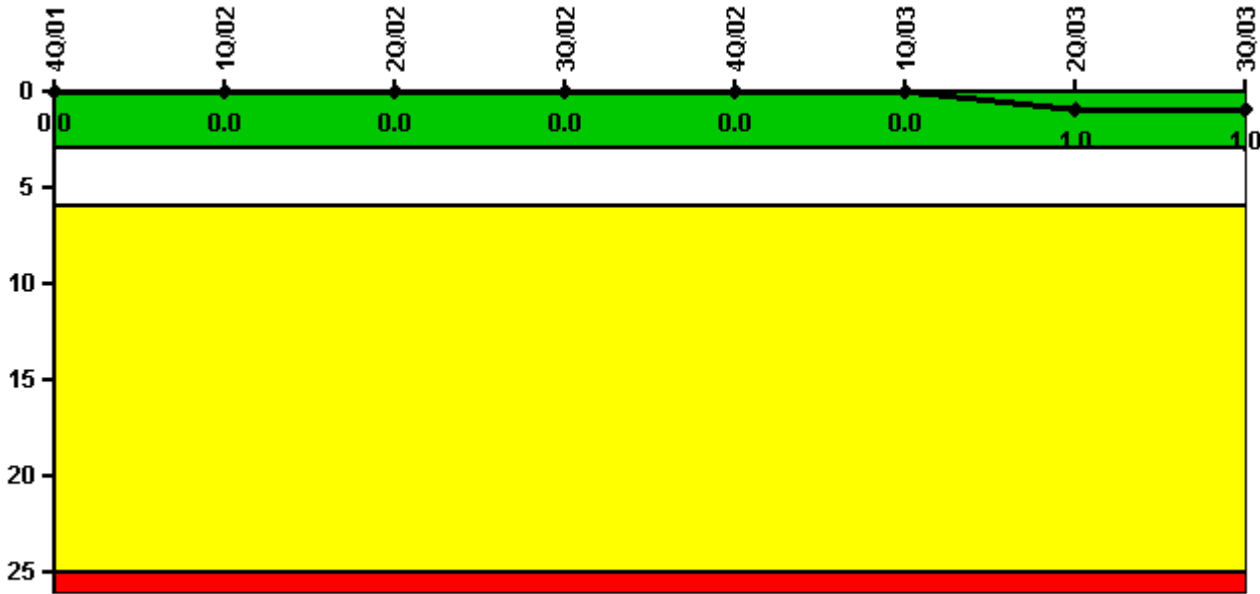


Calvert Cliffs 2

3Q/2003 Performance Indicators

Licensee's General Comments: none

Unplanned Scrams per 7000 Critical Hrs



Thresholds: White > 3.0 Yellow > 6.0 Red > 25.0

Notes

Unplanned Scrams per 7000 Critical Hrs	4Q/01	1Q/02	2Q/02	3Q/02	4Q/02	1Q/03	2Q/03	3Q/03
Unplanned scrams	0	0	0	0	0	0	1.0	0
Critical hours	2162.9	2160.0	2183.0	2208.0	2209.0	1079.4	1670.6	2208.0
Indicator value	0	0	0	0	0	0	1.0	1.0

Licensee Comments: none

Scrams with Loss of Normal Heat Removal



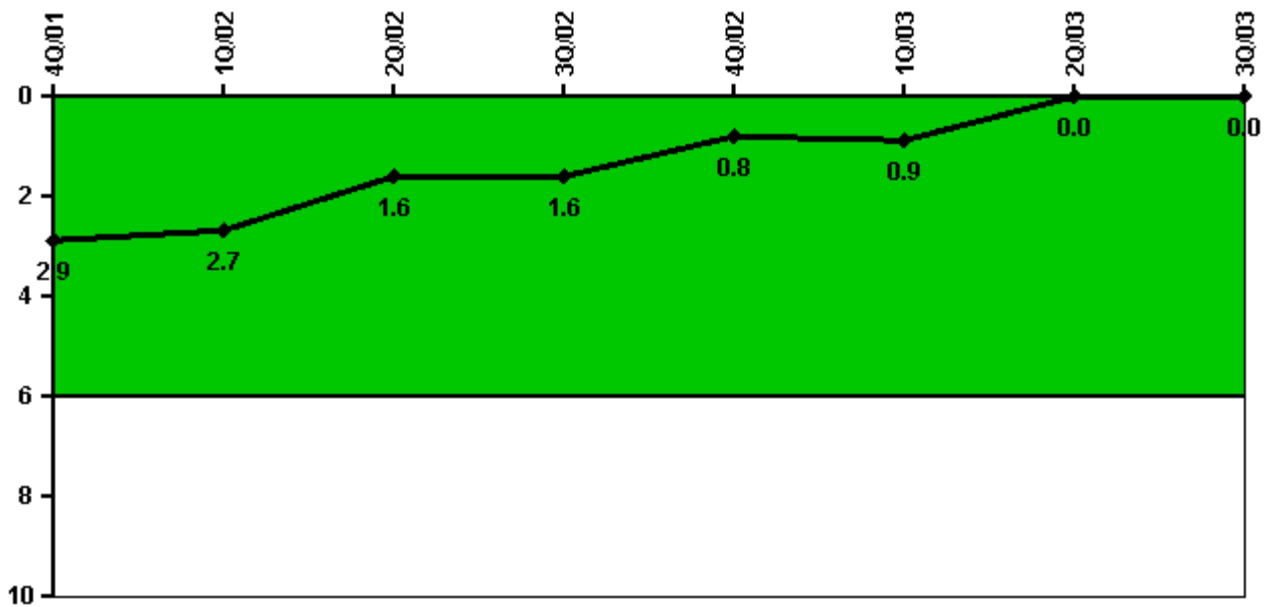
Thresholds: White > 2.0 Yellow > 10.0 Red > 20.0

Notes

Scrams with Loss of Normal Heat Removal	4Q/01	1Q/02	2Q/02	3Q/02	4Q/02	1Q/03	2Q/03	3Q/03
Scrams	0	0	0	0	0	0	0	0
Indicator value	0	0	0	0	0	0	0	0

Licensee Comments: none

Unplanned Power Changes per 7000 Critical Hrs



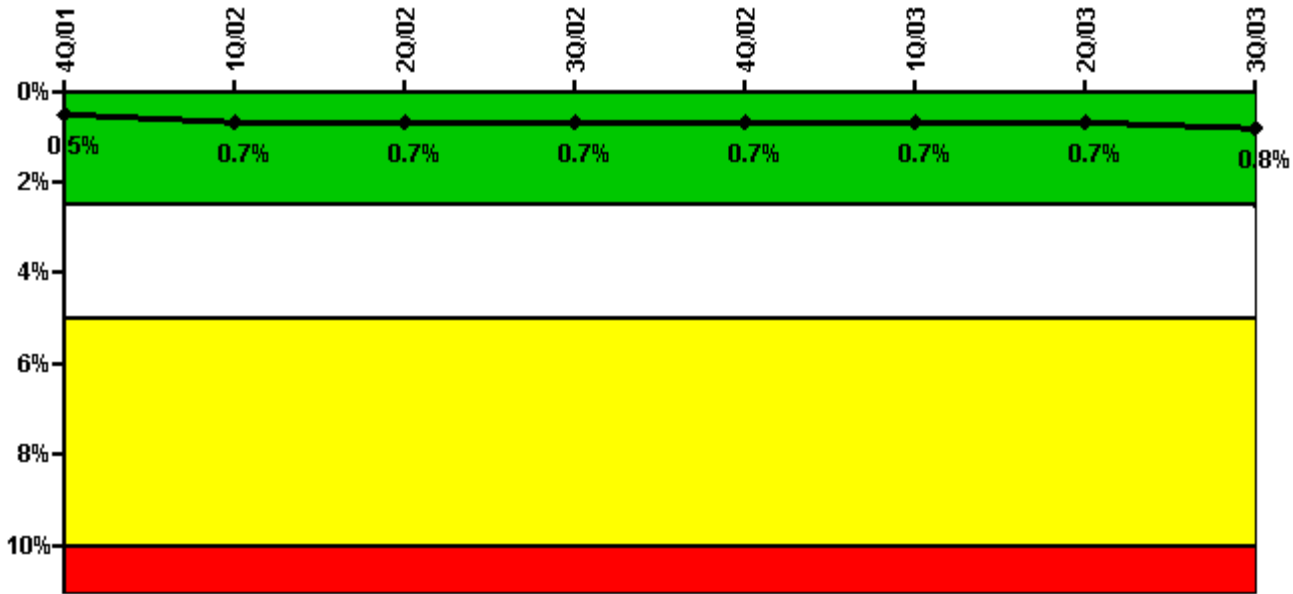
Thresholds: White > 6.0

Notes

Unplanned Power Changes per 7000 Critical Hrs	4Q/01	1Q/02	2Q/02	3Q/02	4Q/02	1Q/03	2Q/03	3Q/03
Unplanned power changes	1.0	0	1.0	0	0	0	0	0
Critical hours	2162.9	2160.0	2183.0	2208.0	2209.0	1079.4	1670.6	2208.0
Indicator value	2.9	2.7	1.6	1.6	0.8	0.9	0	0

Licensee Comments: none

Safety System Unavailability, Emergency AC Power



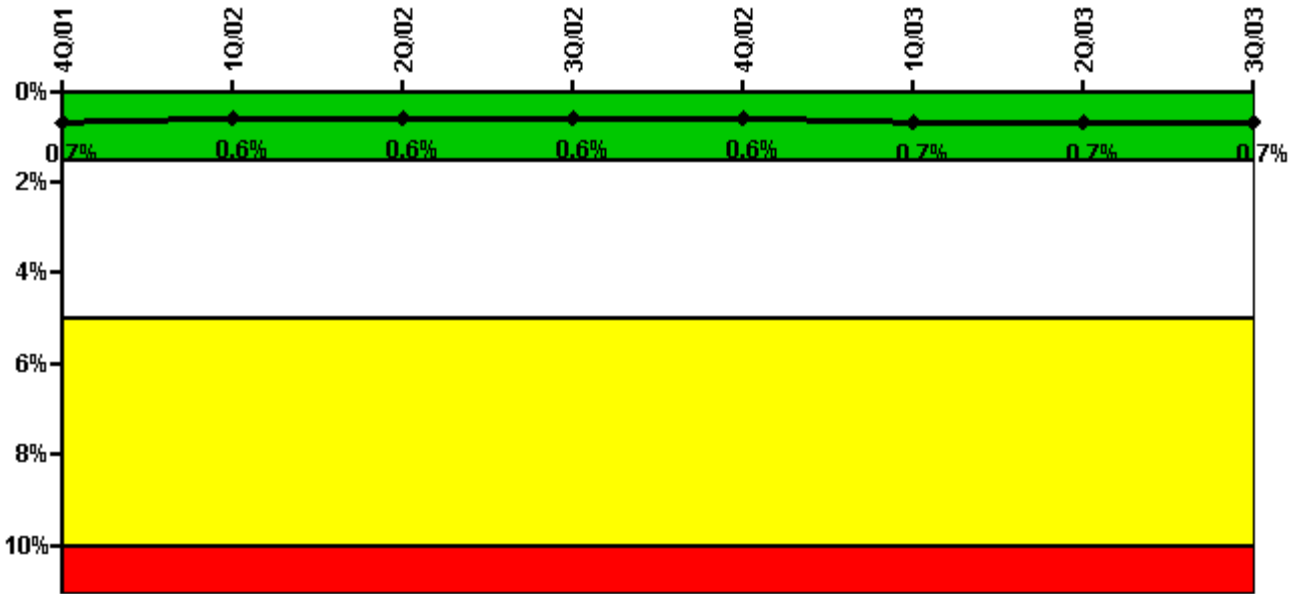
Thresholds: White > 2.5% Yellow > 5.0% Red > 10.0%

Notes

Safety System Unavailability, Emergency AC Power	4Q/01	1Q/02	2Q/02	3Q/02	4Q/02	1Q/03	2Q/03	3Q/03
Train 1								
Planned unavailable hours	0.50	1.33	13.50	0	0	20.18	0	0
Unplanned unavailable hours	9.27	143.98	0	0	0	0	0	0
Fault exposure hours	0	0	0	0	0	0	0	0
Effective Reset hours	0	0	0	0	0	0	0	0
Required hours	2209.00	2160.00	2183.00	2208.00	2209.00	2160.00	2183.00	2208.00
Train 2								
Planned unavailable hours	0.25	0	2.70	13.27	6.30	34.39	1.05	32.42
Unplanned unavailable hours	0	12.25	0	0	0	0	0	0
Fault exposure hours	0	0	0	0	0	0	0	0
Effective Reset hours	0	0	0	0	0	0	0	0
Required hours	2209.00	2160.00	2183.00	2208.00	2209.00	2160.00	2183.00	2208.00
Indicator value	0.5%	0.7%	0.7%	0.7%	0.7%	0.7%	0.7%	0.8%

Licensee Comments: none

Safety System Unavailability, High Pressure Injection System (HPSI)



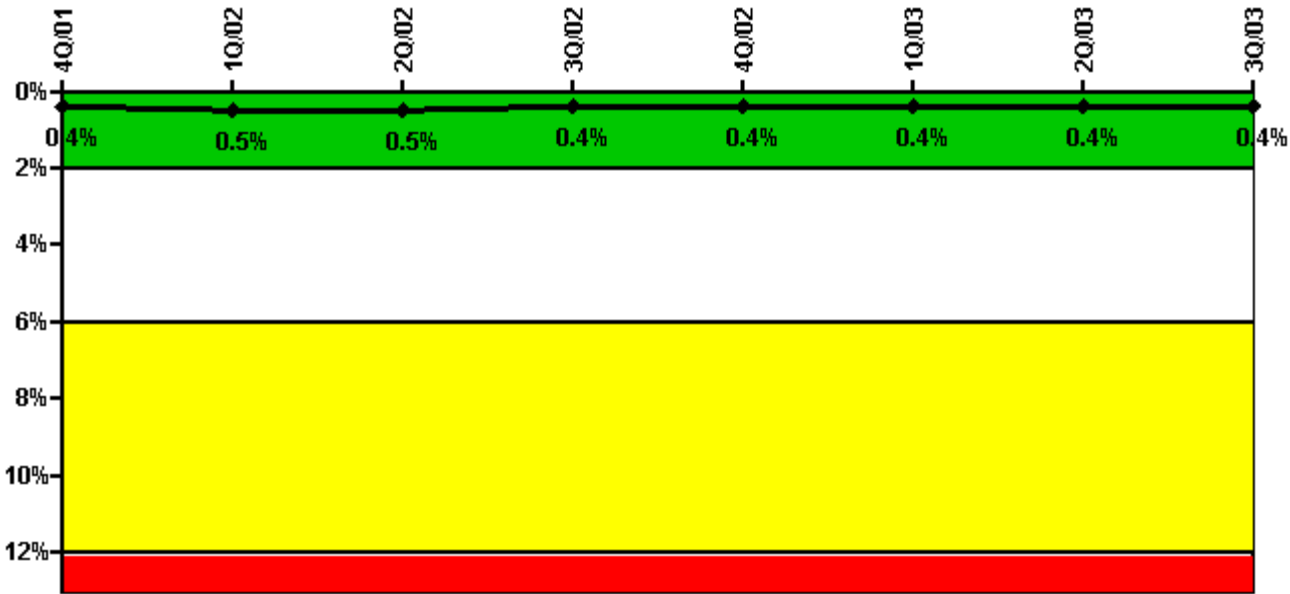
Thresholds: White > 1.5% Yellow > 5.0% Red > 10.0%

Notes

Safety System Unavailability, High Pressure Injection System (HPSI)	4Q/01	1Q/02	2Q/02	3Q/02	4Q/02	1Q/03	2Q/03	3Q/03
Train 1								
Planned unavailable hours	9.94	20.17	0.30	2.42	25.99	18.68	2.11	2.58
Unplanned unavailable hours	9.27	0	11.70	0	0.77	0	0	0
Fault exposure hours	0	0	0	0	0	0	0	0
Effective Reset hours	0	0	0	0	0	0	0	0
Required hours	2162.90	2160.00	2183.00	2208.00	2209.00	1079.40	1670.60	2208.00
Train 2								
Planned unavailable hours	0.54	17.45	0.30	34.49	1.23	33.78	3.98	35.00
Unplanned unavailable hours	0.47	0	0	0	0	3.40	0	0
Fault exposure hours	0	0	0	0	0	0	0	0
Effective Reset hours	0	0	0	0	0	0	0	0
Required hours	2162.90	2160.00	2183.00	2208.00	2209.00	1079.40	1670.60	2208.00
Indicator value	0.7%	0.6%	0.6%	0.6%	0.6%	0.7%	0.7%	0.7%

Licensee Comments: none

Safety System Unavailability, Heat Removal System (AFW)



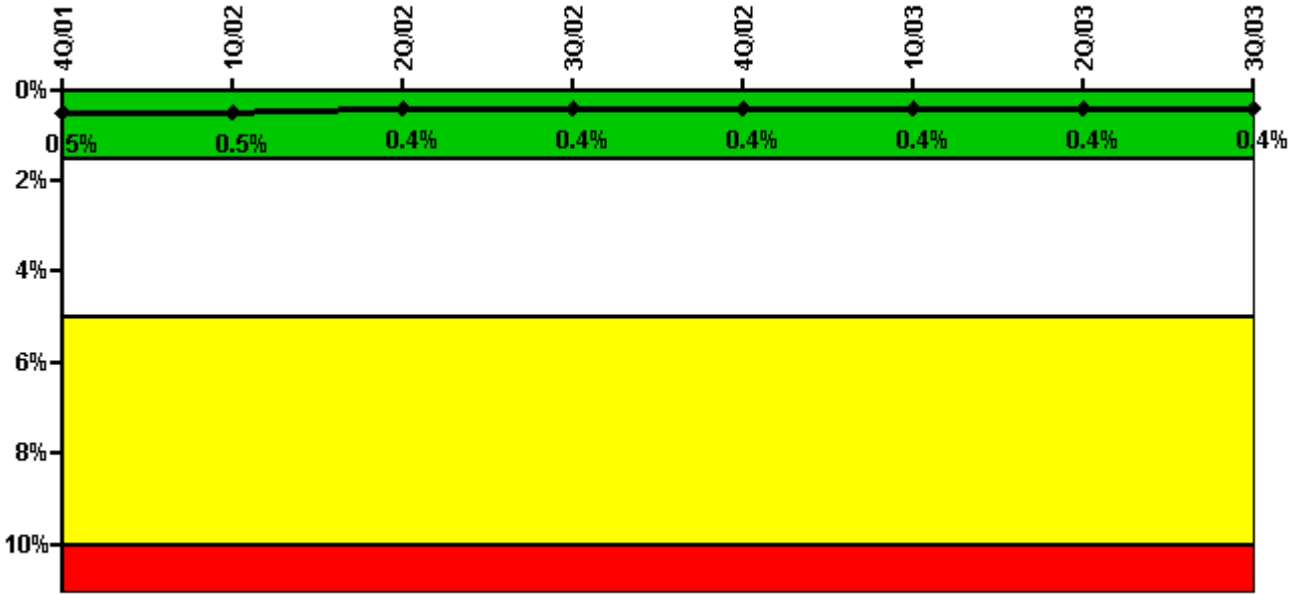
Thresholds: White > 2.0% Yellow > 6.0% Red > 12.0%

Notes

Safety System Unavailability, Heat Removal System (AFW)	4Q/01	1Q/02	2Q/02	3Q/02	4Q/02	1Q/03	2Q/03	3Q/03
Train 1								
Planned unavailable hours	0.08	22.42	2.20	0	0.40	0	0.92	0
Unplanned unavailable hours	0	0	0	0	0.37	0	0	0
Fault exposure hours	0	0	0	0	0	0	0	0
Effective Reset hours	0	0	0	0	0	0	0	0
Required hours	2162.90	2160.00	2183.00	2208.00	2209.00	1079.40	1670.60	2208.00
Train 2								
Planned unavailable hours	0.17	22.42	2.70	0.47	1.07	0	0.42	0.97
Unplanned unavailable hours	0	0	0	0	0.90	0	0	0
Fault exposure hours	0	0	0	0	0	0	0	0
Effective Reset hours	0	0	0	0	0	0	0	0
Required hours	2162.90	2160.00	2183.00	2208.00	2209.00	1079.40	1670.60	2208.00
Train 3								
Planned unavailable hours	13.07	0	4.60	0	0	0.52	0	0
Unplanned unavailable hours	0	0	0	23.38	0	0	0	0
Fault exposure hours	0	0	0	0	0	0	0	0
Effective Reset hours	0	0	0	0	0	0	0	0
Required hours	2162.90	2160.00	2183.00	2208.00	2209.00	1079.40	1670.60	2208.00
Indicator value	0.4%	0.5%	0.5%	0.4%	0.4%	0.4%	0.4%	0.4%

Licensee Comments: none

Safety System Unavailability, Residual Heat Removal System



Thresholds: White > 1.5% Yellow > 5.0% Red > 10.0%

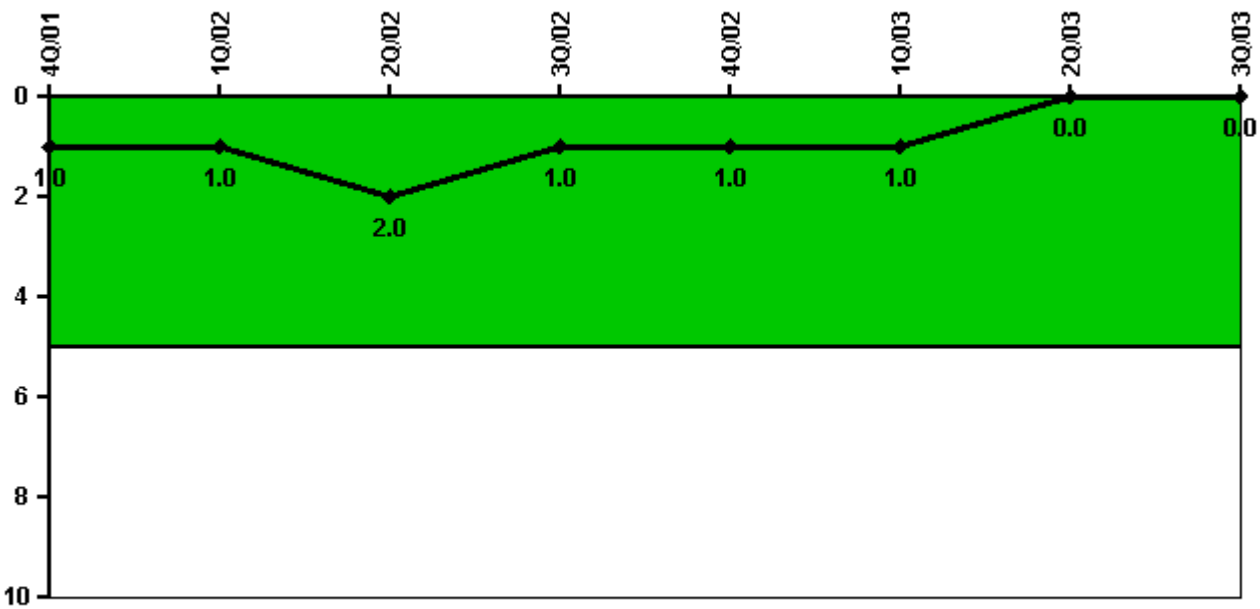
Notes

Safety System Unavailability, Residual Heat Removal System	4Q/01	1Q/02	2Q/02	3Q/02	4Q/02	1Q/03	2Q/03	3Q/03
Train 1								
Planned unavailable hours	0	0	0	0	0	0	0	0
Unplanned unavailable hours	0	0	0	0	0	0	0	0
Fault exposure hours	0	0	0	0	0	0	0	0
Effective Reset hours	0	0	0	0	0	0	0	0
Required hours	19.30	0	0	0	0	304.50	300.00	0
Train 2								
Planned unavailable hours	0	0	0	0	0	0	0	0
Unplanned unavailable hours	0	0	0	0	0	0	0	0
Fault exposure hours	0	0	0	0	0	0	0	0
Effective Reset hours	0	0	0	0	0	0	0	0
Required hours	19.30	0	0	0	0	304.50	300.00	0
Train 3								
Planned unavailable hours	25.68	21.59	18.10	2.49	3.66	18.24	6.55	3.43
Unplanned unavailable hours	9.27	0	11.70	1.92	0	0	0	0
Fault exposure hours	0	0	0	0	0	0	0	0
Effective Reset hours	0	0	0	0	0	0	0	0
Required hours	2189.70	2160.00	2183.00	2208.00	2209.00	1090.30	1741.90	2208.00
Train 4								
Planned unavailable hours	1.91	18.47	6.40	42.50	3.06	33.74	19.05	34.77

Unplanned unavailable hours	0	0	0	3.15	0	3.40	0	0
Fault exposure hours	0	0	0	0	0	0	0	0
Effective Reset hours	0	0	0	0	0	0	0	0
Required hours	2189.70	2160.00	2183.00	2208.00	2209.00	1090.30	1741.90	2208.00
Indicator value	0.5%	0.5%	0.4%	0.4%	0.4%	0.4%	0.4%	0.4%

Licensee Comments: none

Safety System Functional Failures (PWR)



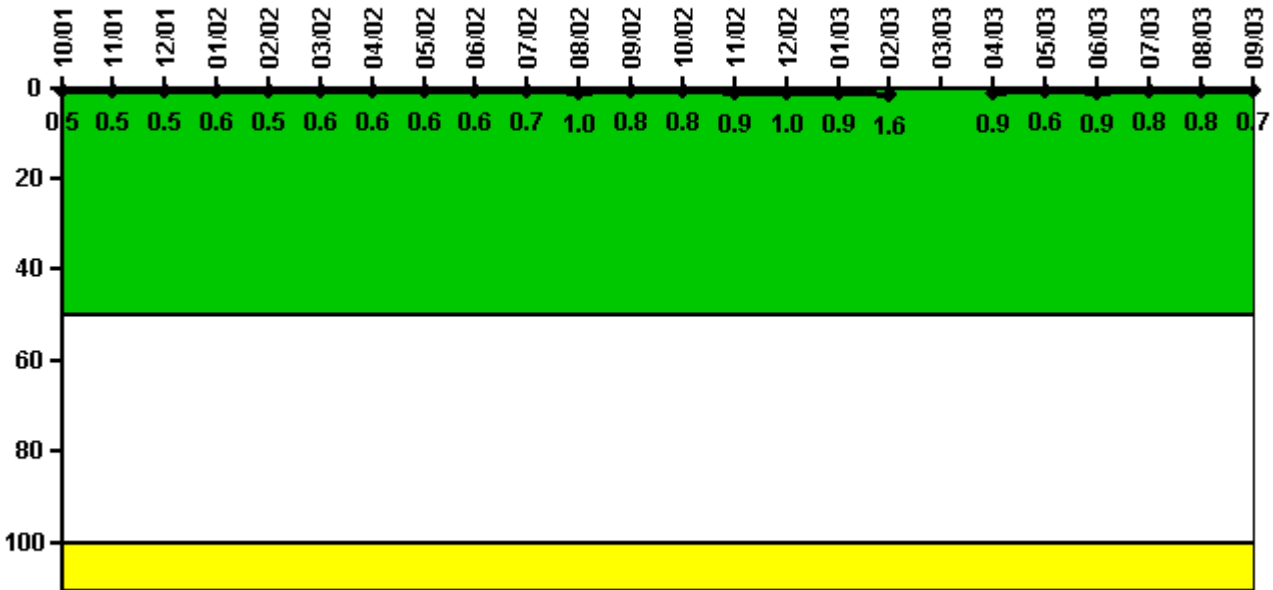
Thresholds: White > 5.0

Notes

Safety System Functional Failures (PWR)	4Q/01	1Q/02	2Q/02	3Q/02	4Q/02	1Q/03	2Q/03	3Q/03
Safety System Functional Failures	0	0	1	0	0	0	0	0
Indicator value	1	1	2	1	1	1	0	0

Licensee Comments: none

Reactor Coolant System Activity



Thresholds: White > 50.0 Yellow > 100.0

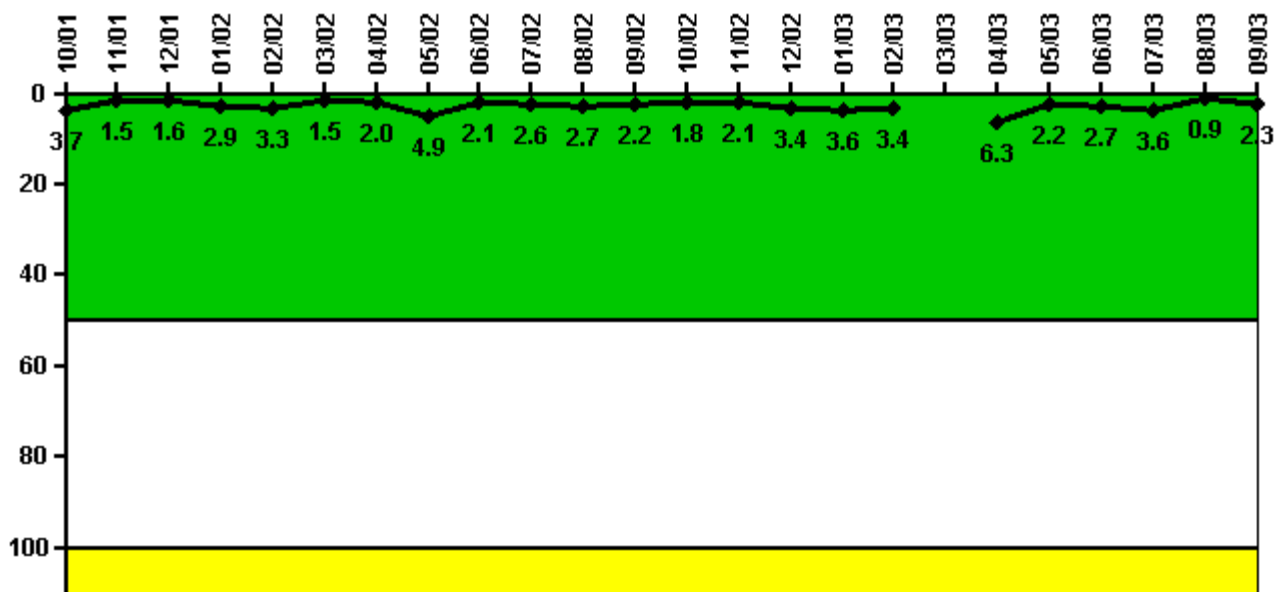
Notes

Reactor Coolant System Activity	10/01	11/01	12/01	1/02	2/02	3/02	4/02	5/02	6/02	7/02	8/02	9/02
Maximum activity	0.004620	0.004720	0.005170	0.005730	0.005470	0.005600	0.005600	0.006010	0.006200	0.006550	0.009630	0.007900
Technical specification limit	1.0	1.0	1.0	1.0	1.0	1.0	1.0	1.0	1.0	1.0	1.0	1.0
Indicator value	0.5	0.5	0.5	0.6	0.5	0.6	0.6	0.6	0.6	0.7	1.0	0.8

Reactor Coolant System Activity	10/02	11/02	12/02	1/03	2/03	3/03	4/03	5/03	6/03	7/03	8/03	9/03
Maximum activity	0.007980	0.008700	0.009630	0.008560	0.015900	N/A	0.009480	0.005990	0.008670	0.007940	0.007550	0.006680
Technical specification limit	1.0	1.0	1.0	1.0	1.0	1.0	1.0	1.0	1.0	1.0	1.0	1.0
Indicator value	0.8	0.9	1.0	0.9	1.6	N/A	0.9	0.6	0.9	0.8	0.8	0.7

Licensee Comments: none

Reactor Coolant System Leakage



Thresholds: White > 50.0 Yellow > 100.0

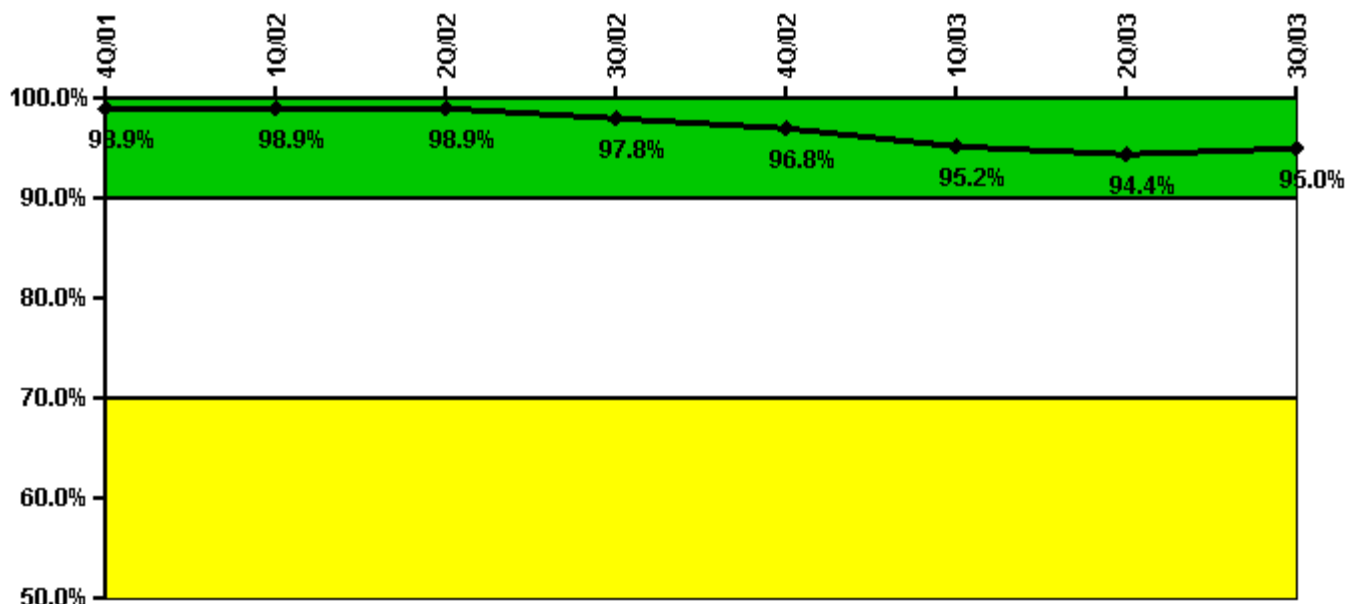
Notes

Reactor Coolant System Leakage	10/01	11/01	12/01	1/02	2/02	3/02	4/02	5/02	6/02	7/02	8/02	9/02
Maximum leakage	0.370	0.150	0.160	0.289	0.331	0.145	0.200	0.486	0.211	0.262	0.273	0.220
Technical specification limit	10.0	10.0	10.0	10.0	10.0	10.0	10.0	10.0	10.0	10.0	10.0	10.0
Indicator value	3.7	1.5	1.6	2.9	3.3	1.5	2.0	4.9	2.1	2.6	2.7	2.2

Reactor Coolant System Leakage	10/02	11/02	12/02	1/03	2/03	3/03	4/03	5/03	6/03	7/03	8/03	9/03
Maximum leakage	0.177	0.210	0.338	0.360	0.340	N/A	0.630	0.220	0.270	0.357	0.094	0.228
Technical specification limit	10.0	10.0	10.0	10.0	10.0	10.0	10.0	10.0	10.0	10.0	10.0	10.0
Indicator value	1.8	2.1	3.4	3.6	3.4	N/A	6.3	2.2	2.7	3.6	0.9	2.3

Licensee Comments: none

Drill/Exercise Performance



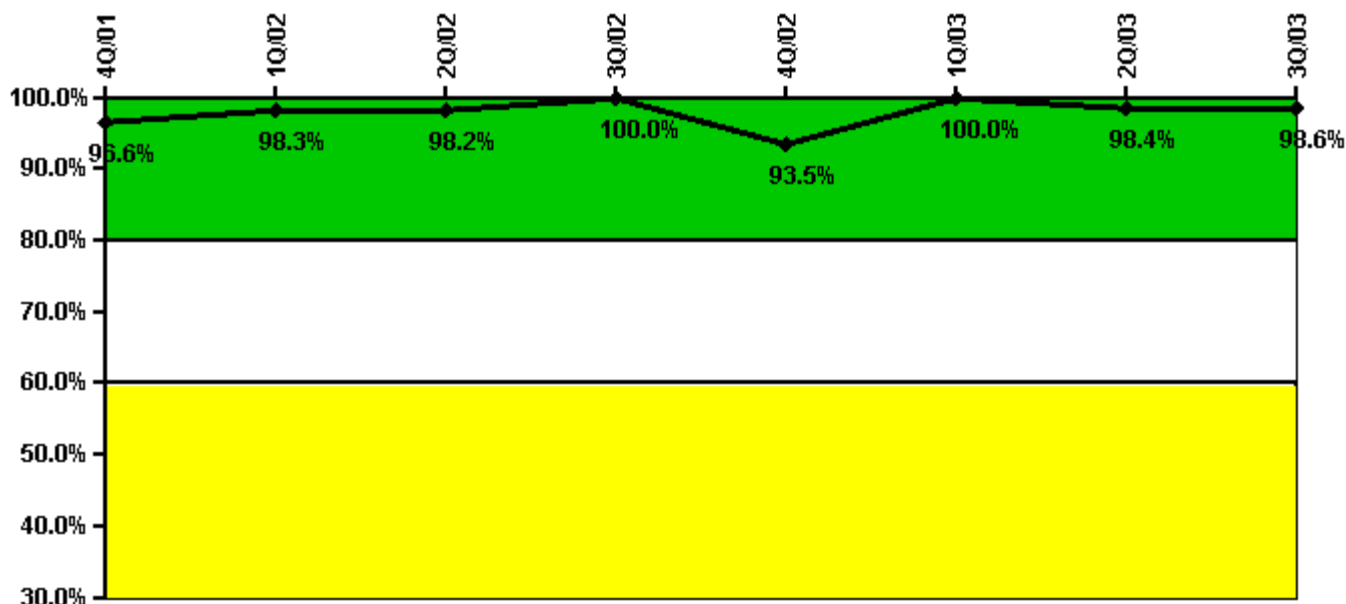
Thresholds: White < 90.0% Yellow < 70.0%

Notes

Drill/Exercise Performance	4Q/01	1Q/02	2Q/02	3Q/02	4Q/02	1Q/03	2Q/03	3Q/03
Successful opportunities	25.0	14.0	8.0	34.0	39.0	9.0	14.0	29.0
Total opportunities	25.0	14.0	8.0	37.0	41.0	12.0	15.0	29.0
Indicator value	98.9%	98.9%	98.9%	97.8%	96.8%	95.2%	94.4%	95.0%

Licensee Comments: none

ERO Drill Participation



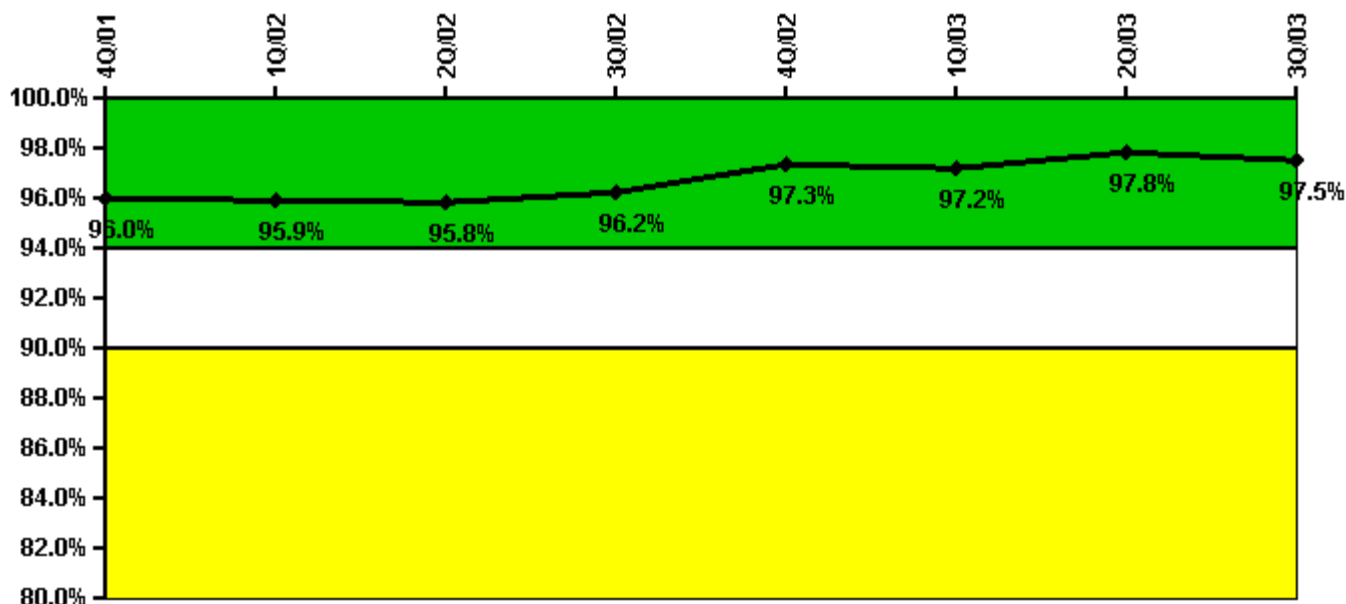
Thresholds: White < 80.0% Yellow < 60.0%

Notes

ERO Drill Participation	4Q/01	1Q/02	2Q/02	3Q/02	4Q/02	1Q/03	2Q/03	3Q/03
Participating Key personnel	57.0	58.0	54.0	58.0	58.0	57.0	63.0	68.0
Total Key personnel	59.0	59.0	55.0	58.0	62.0	57.0	64.0	69.0
Indicator value	96.6%	98.3%	98.2%	100.0%	93.5%	100.0%	98.4%	98.6%

Licensee Comments: none

Alert & Notification System



Thresholds: White < 94.0% Yellow < 90.0%

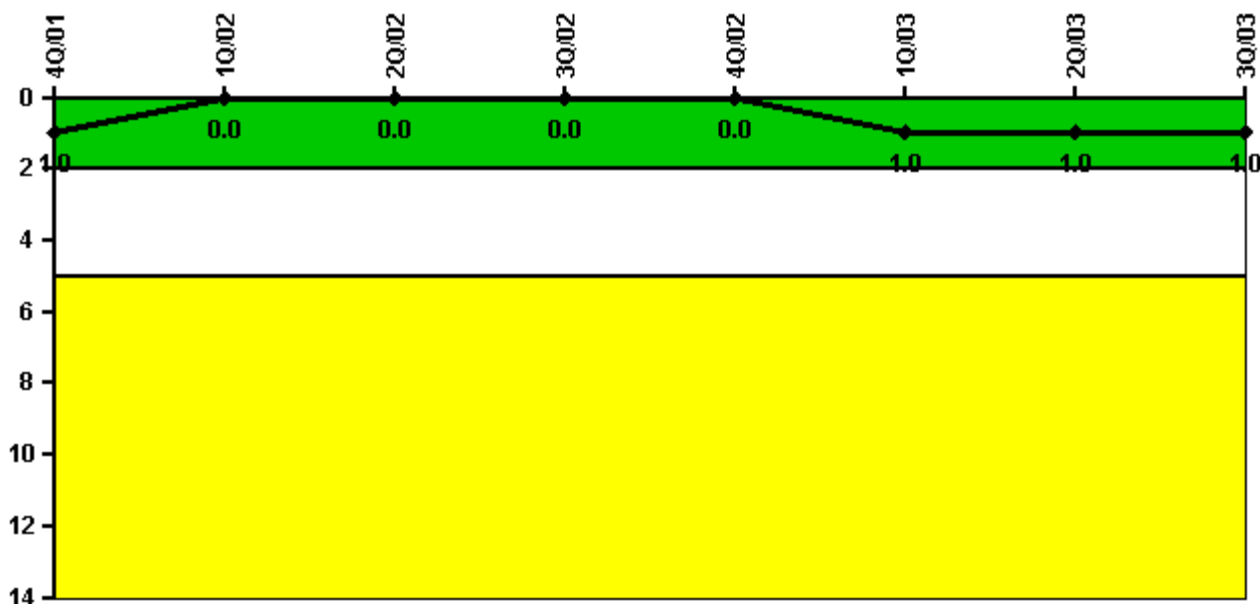
Notes

Alert & Notification System	4Q/01	1Q/02	2Q/02	3Q/02	4Q/02	1Q/03	2Q/03	3Q/03
Successful siren-tests	1078	918	956	1035	1007	914	1036	963
Total sirens-tests	1140	930	1019	1057	1019	930	1074	996
Indicator value	96.0%	95.9%	95.8%	96.2%	97.3%	97.2%	97.8%	97.5%

Licensee Comments:

2Q/03: The 2Q2003 ANS Reliability Performance Indicator contained data for four quarters instead of only the current quarter. The data is being amended at this time. This does not cause a color change for the ANS Reliability Performance Indicator.

Occupational Exposure Control Effectiveness



Thresholds: White > 2.0 Yellow > 5.0

Notes

Occupational Exposure Control Effectiveness	4Q/01	1Q/02	2Q/02	3Q/02	4Q/02	1Q/03	2Q/03	3Q/03
High radiation area occurrences	0	0	0	0	0	1	0	0
Very high radiation area occurrences	0	0	0	0	0	0	0	0
Unintended exposure occurrences	0	0	0	0	0	0	0	0
Indicator value	1	0	0	0	0	1	1	1

Licensee Comments:

1Q/03: There was one Technical Specification high radiation area violation that occurred in March 2003. This instance was not reported on the 1Q2003 data collection form and is being amended at this time. The occurrence does not cause a color change for the Occupational Exposure Control Effectiveness Performance Indicator.

RETS/ODCM Radiological Effluent



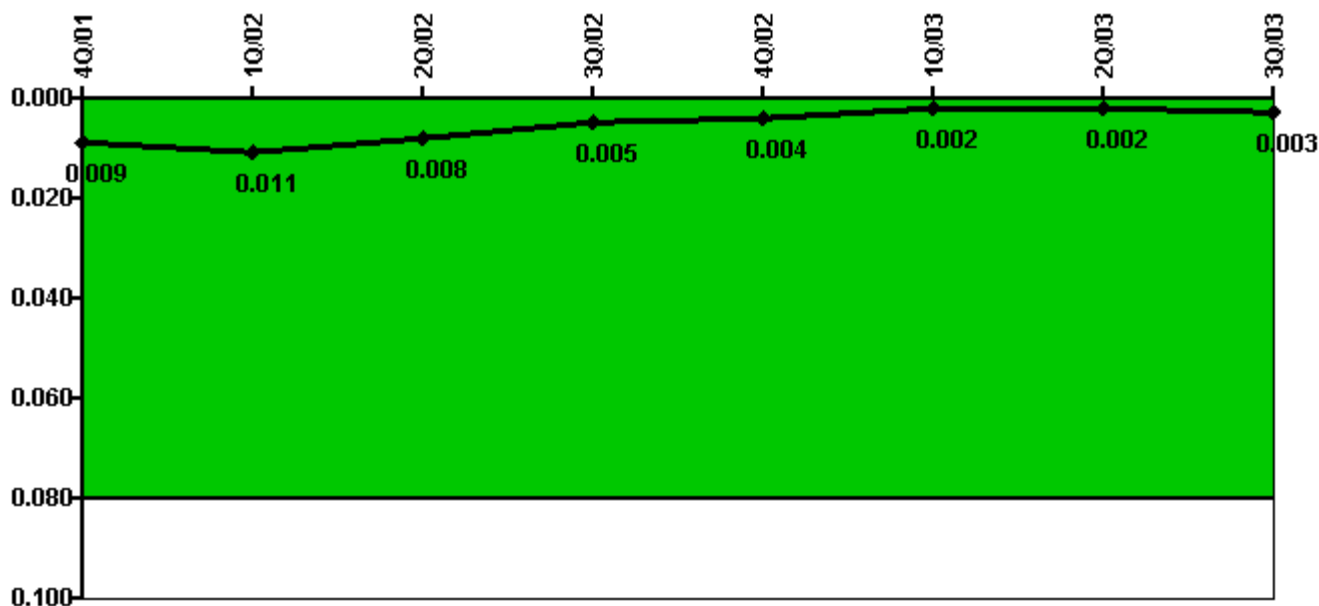
Thresholds: White > 1.0 Yellow > 3.0

Notes

RETS/ODCM Radiological Effluent	4Q/01	1Q/02	2Q/02	3Q/02	4Q/02	1Q/03	2Q/03	3Q/03
RETS/ODCM occurrences	0	0	0	0	0	0	0	0
Indicator value	0	0	0	0	0	0	0	0

Licensee Comments: none

Protected Area Security Performance Index



Thresholds: White > 0.080

Notes

Protected Area Security Performance Index	4Q/01	1Q/02	2Q/02	3Q/02	4Q/02	1Q/03	2Q/03	3Q/03
IDS compensatory hours	39.90	51.10	1.80	7.80	14.20	24.90	11.70	25.40
CCTV compensatory hours	0	19.5	0	0	0	0	0	0
IDS normalization factor	1.40	1.40	1.40	1.40	1.40	1.40	1.40	1.40
CCTV normalization factor	1.2	1.2	1.2	1.2	1.2	1.2	1.2	1.2
Index Value	0.009	0.011	0.008	0.005	0.004	0.002	0.002	0.003

Licensee Comments: none

Personnel Screening Program



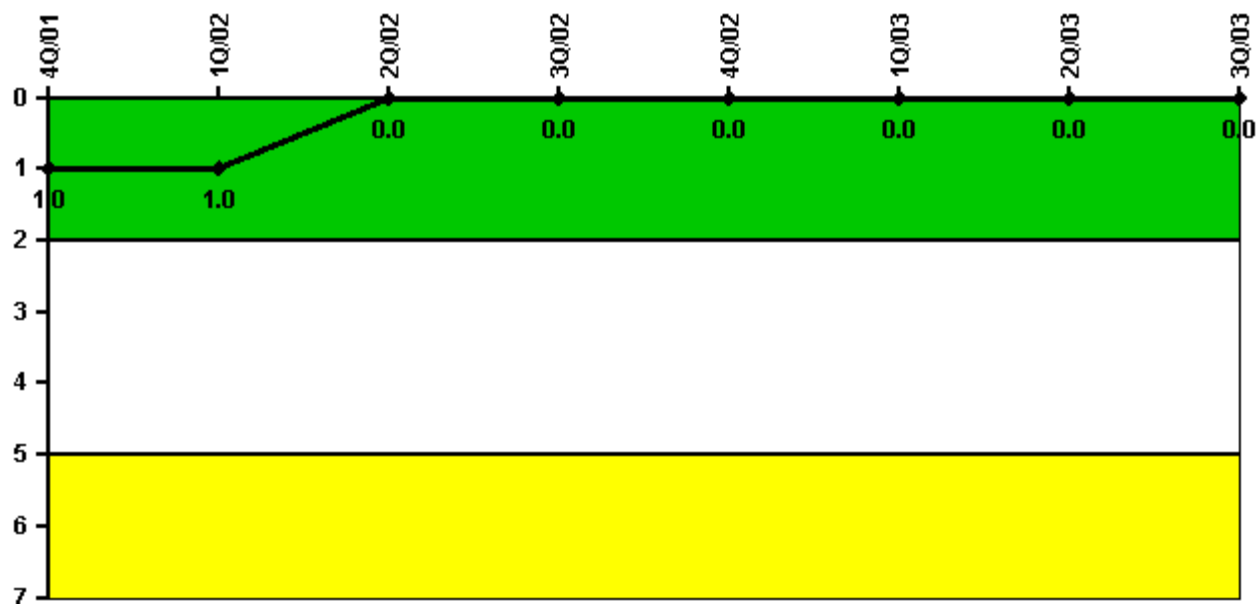
Thresholds: White > 2.0 Yellow > 5.0

Notes

Personnel Screening Program	4Q/01	1Q/02	2Q/02	3Q/02	4Q/02	1Q/03	2Q/03	3Q/03
Program failures	0	0	0	0	0	0	0	0
Indicator value	0	0	0	0	0	0	0	0

Licensee Comments: none

FFD/Personnel Reliability



Thresholds: White > 2.0 Yellow > 5.0

Notes

FFD/Personnel Reliability	4Q/01	1Q/02	2Q/02	3Q/02	4Q/02	1Q/03	2Q/03	3Q/03
Program Failures	0	0	0	0	0	0	0	0
Indicator value	1	1	0	0	0	0	0	0

Licensee Comments: none

▲ [PI Summary](#) | [Inspection Findings Summary](#) | [Reactor Oversight Process](#)

Last Modified: October 22, 2003