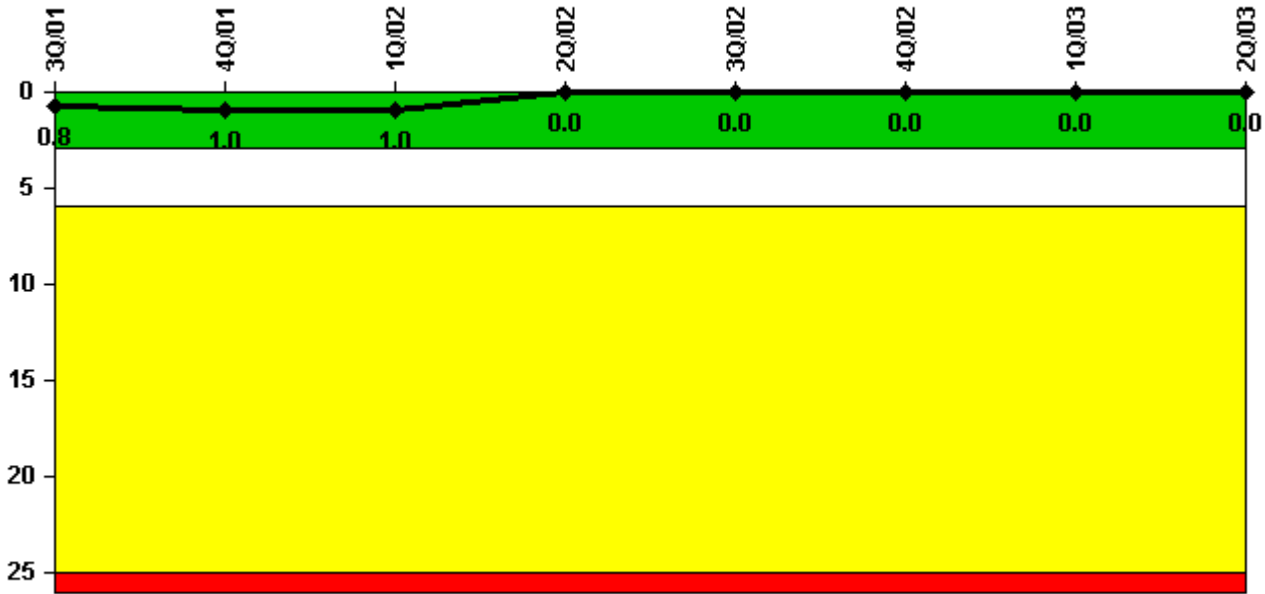


Kewaunee

2Q/2003 Performance Indicators

Licensee's General Comments: none

Unplanned Scrams per 7000 Critical Hrs



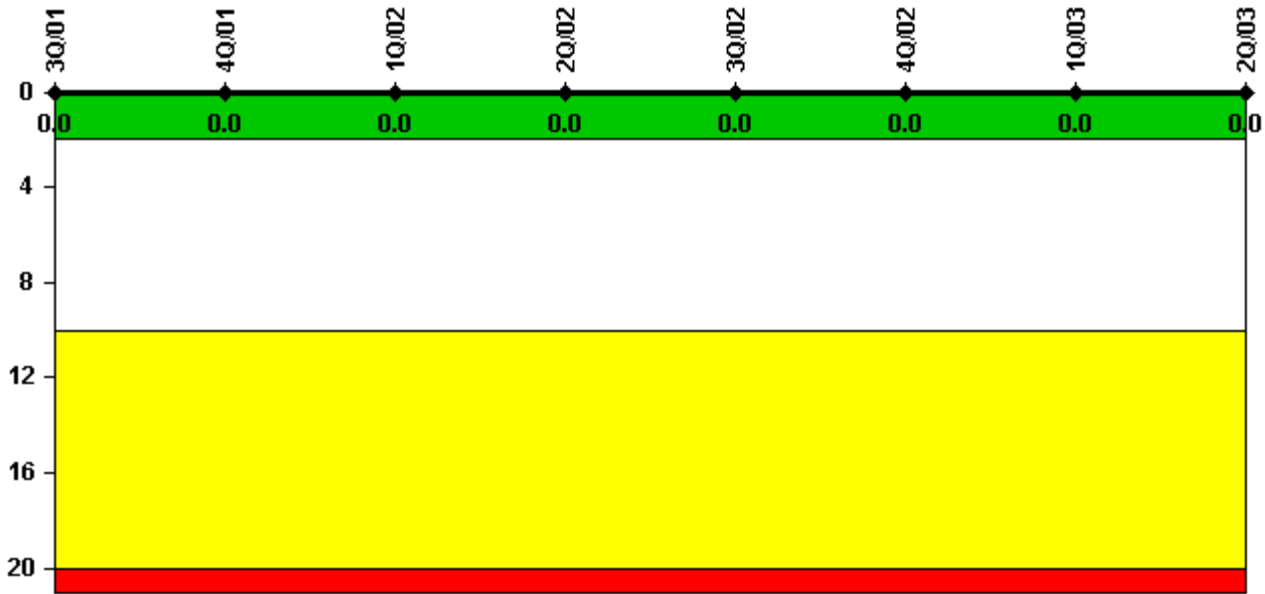
Thresholds: White > 3.0 Yellow > 6.0 Red > 25.0

Notes

Unplanned Scrams per 7000 Critical Hrs	3Q/01	4Q/01	1Q/02	2Q/02	3Q/02	4Q/02	1Q/03	2Q/03
Unplanned scrams	0	0	0	0	0	0	0	0
Critical hours	2040.2	723.8	2160.0	1951.8	2208.0	2209.0	2160.0	1348.2
Indicator value	0.8	1.0	1.0	0	0	0	0	0

Licensee Comments: none

Scrams with Loss of Normal Heat Removal



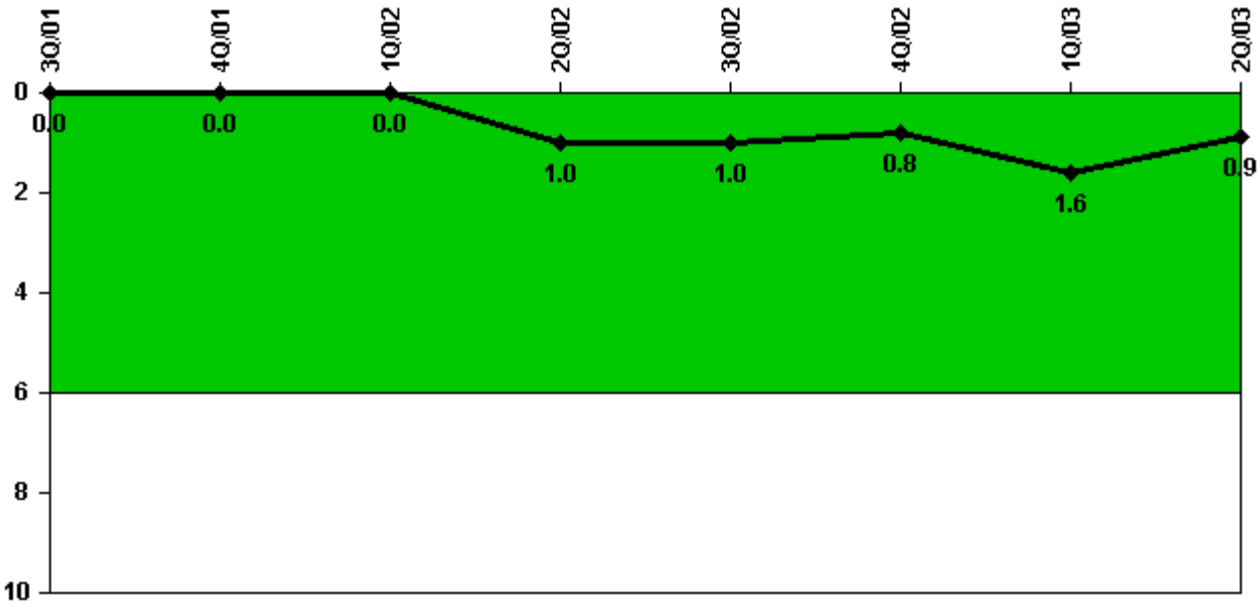
Thresholds: White > 2.0 Yellow > 10.0 Red > 20.0

Notes

Scrams with Loss of Normal Heat Removal	3Q/01	4Q/01	1Q/02	2Q/02	3Q/02	4Q/02	1Q/03	2Q/03
Scrams	0	0	0	0	0	0	0	0
Indicator value	0	0	0	0	0	0	0	0

Licensee Comments: none

Unplanned Power Changes per 7000 Critical Hrs



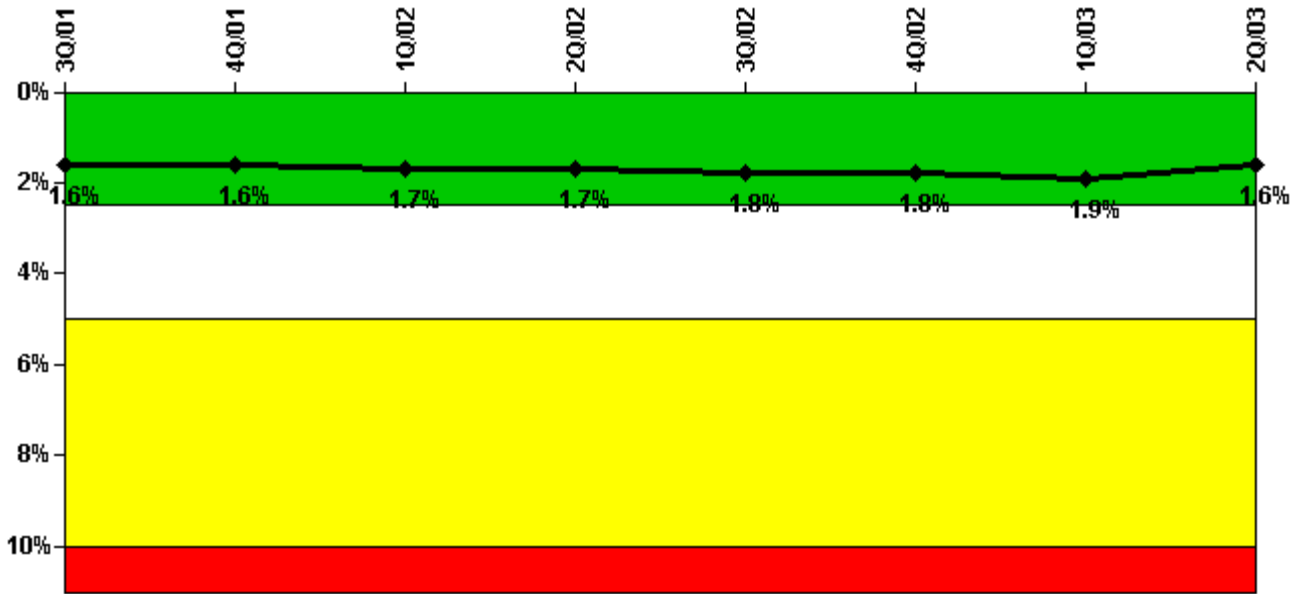
Thresholds: White > 6.0

Notes

Unplanned Power Changes per 7000 Critical Hrs	3Q/01	4Q/01	1Q/02	2Q/02	3Q/02	4Q/02	1Q/03	2Q/03
Unplanned power changes	0	0	0	1.0	0	0	1.0	0
Critical hours	2040.2	723.8	2160.0	1951.8	2208.0	2209.0	2160.0	1348.2
Indicator value	0	0	0	1.0	1.0	0.8	1.6	0.9

Licensee Comments: none

Safety System Unavailability, Emergency AC Power



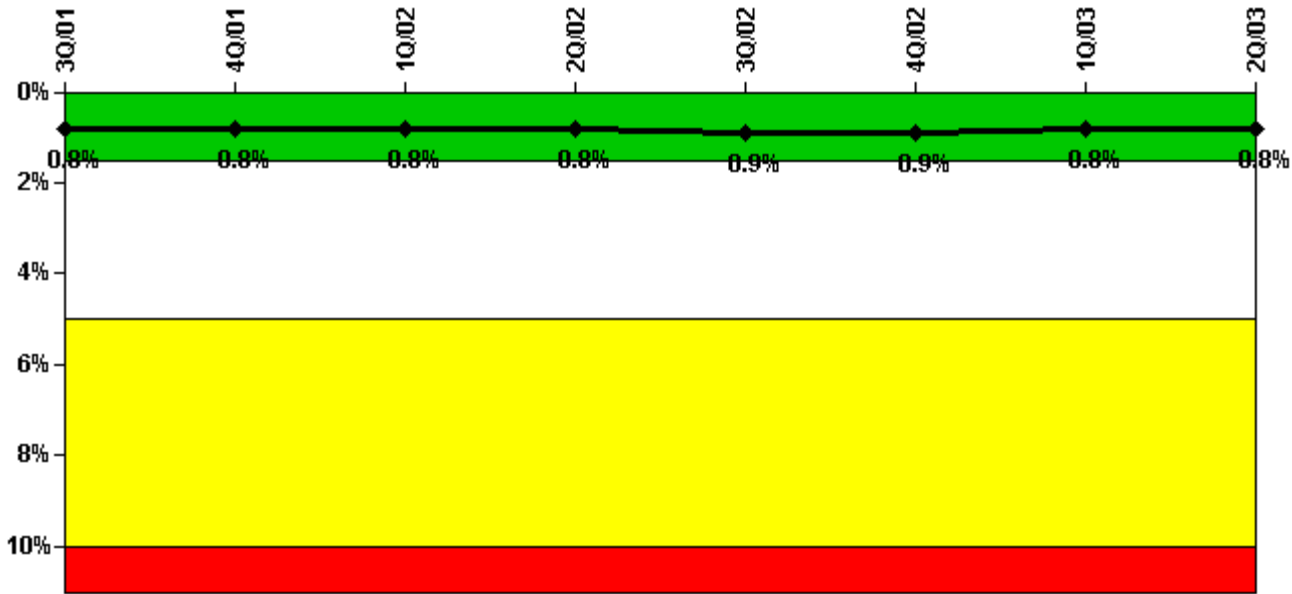
Thresholds: White > 2.5% Yellow > 5.0% Red > 10.0%

Notes

Safety System Unavailability, Emergency AC Power	3Q/01	4Q/01	1Q/02	2Q/02	3Q/02	4Q/02	1Q/03	2Q/03
Train 1								
Planned unavailable hours	25.83	32.54	24.70	35.69	21.83	33.89	56.25	40.13
Unplanned unavailable hours	0	0	0	4.67	0	4.80	0	0
Fault exposure hours	0	0	0	0	0	0	0	0
Effective Reset hours	0	0	0	0	0	0	0	0
Required hours	2208.00	2209.00	2160.00	2183.00	2208.00	2209.00	2160.00	2183.00
Train 2								
Planned unavailable hours	27.13	13.76	42.40	32.51	30.70	34.53	16.70	30.61
Unplanned unavailable hours	0	0	9.69	0	0	2.97	6.12	0
Fault exposure hours	0	0	0.13	0	0	0	22.75	0
Effective Reset hours	0	0	0	0	0	0	0	0
Required hours	2208.00	2209.00	2160.00	2183.00	2208.00	2209.00	2160.00	2183.00
Indicator value	1.6%	1.6%	1.7%	1.7%	1.8%	1.8%	1.9%	1.6%

Licensee Comments: none

Safety System Unavailability, High Pressure Injection System (HPSI)



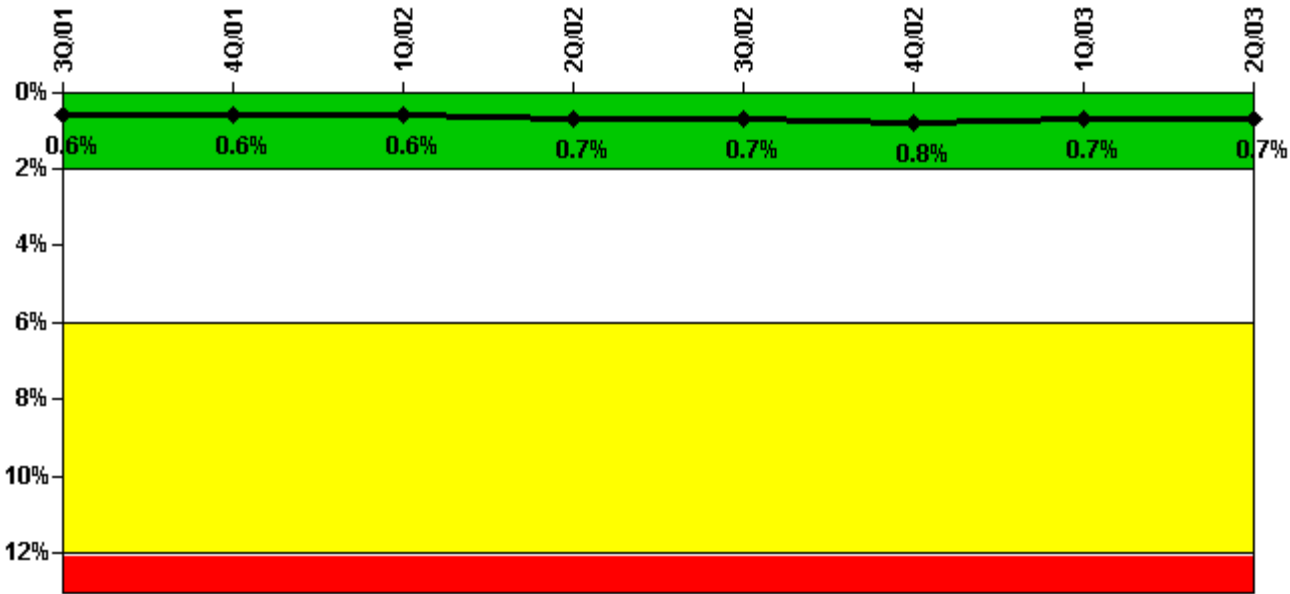
Thresholds: White > 1.5% Yellow > 5.0% Red > 10.0%

Notes

Safety System Unavailability, High Pressure Injection System (HPSI)	3Q/01	4Q/01	1Q/02	2Q/02	3Q/02	4Q/02	1Q/03	2Q/03
Train 1								
Planned unavailable hours	10.61	0	9.00	9.17	8.03	18.55	1.82	24.20
Unplanned unavailable hours	0	0	0	4.67	0	0	0	0
Fault exposure hours	0	0	0	0	0	0	0	0
Effective Reset hours	0	0	0	0	0	0	0	0
Required hours	2040.17	778.00	2160.00	1951.76	2208.00	2209.00	2160.00	1355.17
Train 2								
Planned unavailable hours	5.63	0	8.13	10.68	14.77	19.46	5.66	21.61
Unplanned unavailable hours	0	0	0	0	0	0	0	0
Fault exposure hours	0	0	0	0	0	0	0	0
Effective Reset hours	0	0	0	0	0	0	0	0
Required hours	2040.17	778.00	2160.00	1951.76	2208.00	2209.00	2160.00	1355.17
Indicator value	0.8%	0.8%	0.8%	0.8%	0.9%	0.9%	0.8%	0.8%

Licensee Comments: none

Safety System Unavailability, Heat Removal System (AFW)



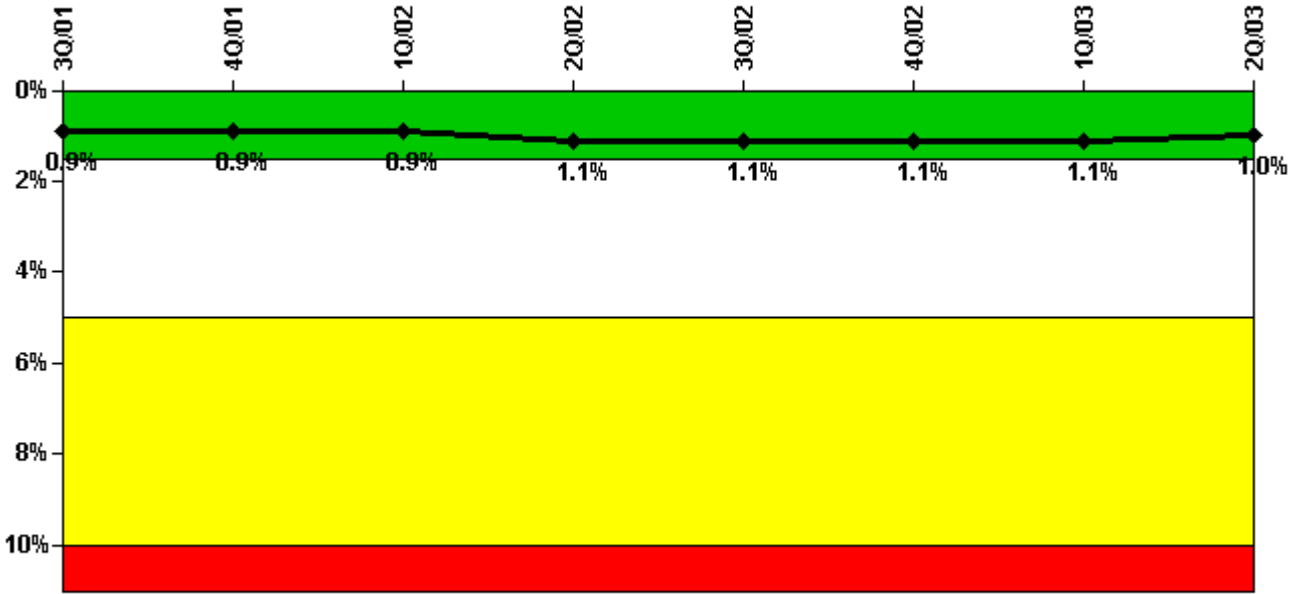
Thresholds: White > 2.0% Yellow > 6.0% Red > 12.0%

Notes

Safety System Unavailability, Heat Removal System (AFW)	3Q/01	4Q/01	1Q/02	2Q/02	3Q/02	4Q/02	1Q/03	2Q/03
Train 1								
Planned unavailable hours	1.39	0.35	11.17	26.25	3.10	26.91	2.79	17.55
Unplanned unavailable hours	0	0	0	4.67	0.79	0	0	0
Fault exposure hours	0	0	0	0	0	0	0	0
Effective Reset hours	0	0	0	0	0	0	0	0
Required hours	2076.00	812.10	2160.00	1967.27	2208.00	2209.00	2160.00	1365.17
Train 2								
Planned unavailable hours	2.22	0.25	9.36	11.42	7.83	18.24	2.07	18.73
Unplanned unavailable hours	0	0.27	0	0	0.39	0	0	0
Fault exposure hours	0	0	0	0	0	0	0	0
Effective Reset hours	0	0	0	0	0	0	0	0
Required hours	2076.00	812.10	2160.00	1967.27	2208.00	2209.00	2160.00	1365.17
Train 3								
Planned unavailable hours	2.90	3.46	8.22	4.68	4.18	17.50	15.60	30.21
Unplanned unavailable hours	0	12.52	0	0	1.75	17.20	0	0
Fault exposure hours	0	0	0	0	0	0	0	0
Effective Reset hours	0	0	0	0	0	0	0	0
Required hours	2076.00	812.10	2160.00	1967.27	2208.00	2209.00	2160.00	1365.17
Indicator value	0.6%	0.6%	0.6%	0.7%	0.7%	0.8%	0.7%	0.7%

Licensee Comments: none

Safety System Unavailability, Residual Heat Removal System



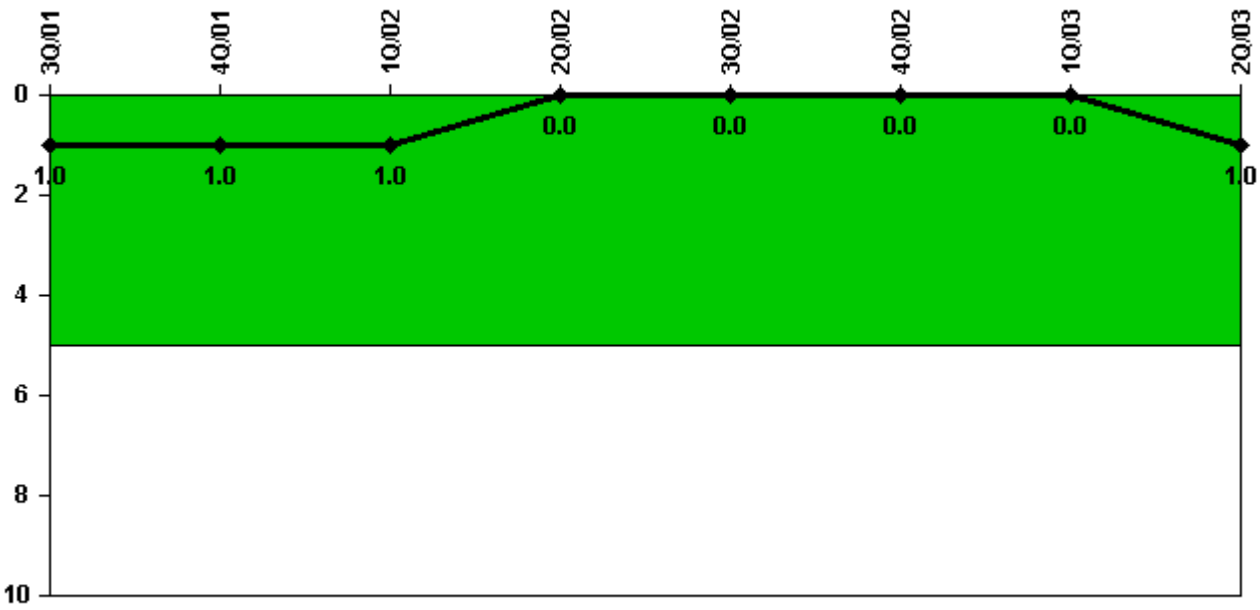
Thresholds: White > 1.5% Yellow > 5.0% Red > 10.0%

Notes

Safety System Unavailability, Residual Heat Removal System	3Q/01	4Q/01	1Q/02	2Q/02	3Q/02	4Q/02	1Q/03	2Q/03
Train 1								
Planned unavailable hours	3.98	0.66	18.09	14.67	9.98	24.05	9.67	59.34
Unplanned unavailable hours	0	0	3.90	71.93	0	0	0	0
Fault exposure hours	0	0	0	0	0	0	0	0
Effective Reset hours	0	0	0	0	0	0	0	0
Required hours	2208.00	2209.00	2160.00	2183.00	2208.00	2209.00	2160.00	2183.00
Train 2								
Planned unavailable hours	11.99	0.55	11.69	23.62	11.44	17.58	11.00	15.34
Unplanned unavailable hours	0	0	7.62	0	0	0	0	0
Fault exposure hours	0	0	0	0	0	0	0	0
Effective Reset hours	0	0	0	0	0	0	0	0
Required hours	2208.00	2209.00	2160.00	2183.00	2208.00	2209.00	2160.00	2183.00
Indicator value	0.9%	0.9%	0.9%	1.1%	1.1%	1.1%	1.1%	1.0%

Licensee Comments: none

Safety System Functional Failures (PWR)



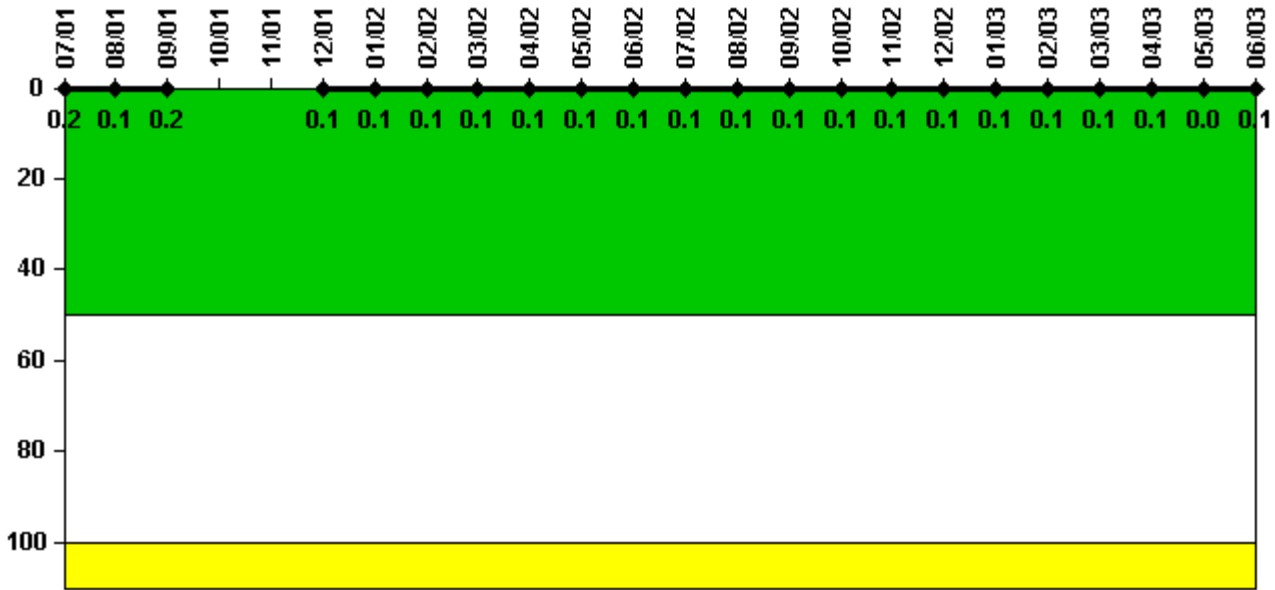
Thresholds: White > 5.0

Notes

Safety System Functional Failures (PWR)	3Q/01	4Q/01	1Q/02	2Q/02	3Q/02	4Q/02	1Q/03	2Q/03
Safety System Functional Failures	0	0	0	0	0	0	0	1
Indicator value	1	1	1	0	0	0	0	1

Licensee Comments: none

Reactor Coolant System Activity



Thresholds: White > 50.0 Yellow > 100.0

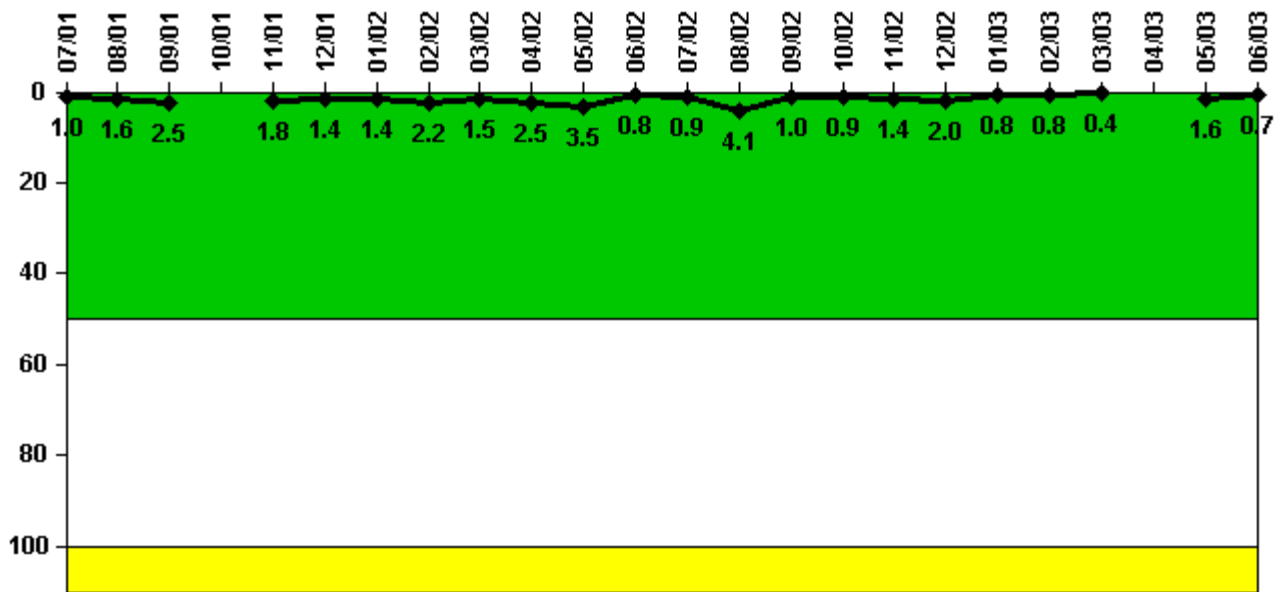
Notes

Reactor Coolant System Activity	7/01	8/01	9/01	10/01	11/01	12/01	1/02	2/02	3/02	4/02	5/02	6/02
Maximum activity	0.000301	0.000295	0.000317	N/A	N/A	0.000203	0.000215	0.000224	0.000215	0.000247	0.000236	0.000248
Technical specification limit	0.2	0.2	0.2	0.2	0.2	0.2	0.2	0.2	0.2	0.2	0.2	0.2
Indicator value	0.2	0.1	0.2	N/A	N/A	0.1	0.1	0.1	0.1	0.1	0.1	0.1

Reactor Coolant System Activity	7/02	8/02	9/02	10/02	11/02	12/02	1/03	2/03	3/03	4/03	5/03	6/03
Maximum activity	0.000260	0.000272	0.000248	0.000258	0.000292	0.000288	0.000279	0.000293	0.000292	0.000282	0.000068	0.000150
Technical specification limit	0.2	0.2	0.2	0.2	0.2	0.2	0.2	0.2	0.2	0.2	0.2	0.2
Indicator value	0.1	0.1	0.1	0.1	0.1	0.1	0.1	0.1	0.1	0.1	0	0.1

Licensee Comments: none

Reactor Coolant System Leakage



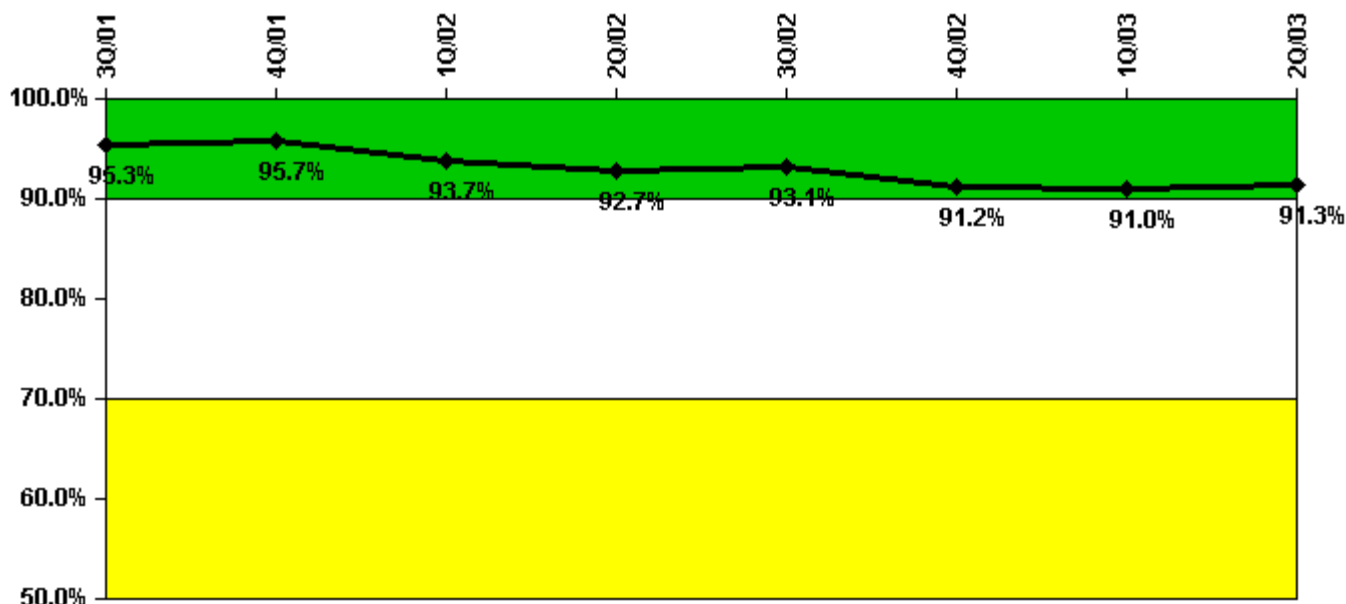
Thresholds: White > 50.0 Yellow > 100.0

Notes

Reactor Coolant System Leakage	7/01	8/01	9/01	10/01	11/01	12/01	1/02	2/02	3/02	4/02	5/02	6/02
Maximum leakage	0.097	0.156	0.248	N/A	0.181	0.141	0.141	0.220	0.152	0.251	0.348	0.083
Technical specification limit	10.0	10.0	10.0	10.0	10.0	10.0	10.0	10.0	10.0	10.0	10.0	10.0
Indicator value	1.0	1.6	2.5	N/A	1.8	1.4	1.4	2.2	1.5	2.5	3.5	0.8
Reactor Coolant System Leakage	7/02	8/02	9/02	10/02	11/02	12/02	1/03	2/03	3/03	4/03	5/03	6/03
Maximum leakage	0.087	0.410	0.098	0.089	0.138	0.201	0.078	0.082	0.037	N/A	0.157	0.066
Technical specification limit	10.0	10.0	10.0	10.0	10.0	10.0	10.0	10.0	10.0	10.0	10.0	10.0
Indicator value	0.9	4.1	1.0	0.9	1.4	2.0	0.8	0.8	0.4	N/A	1.6	0.7

Licensee Comments: none

Drill/Exercise Performance



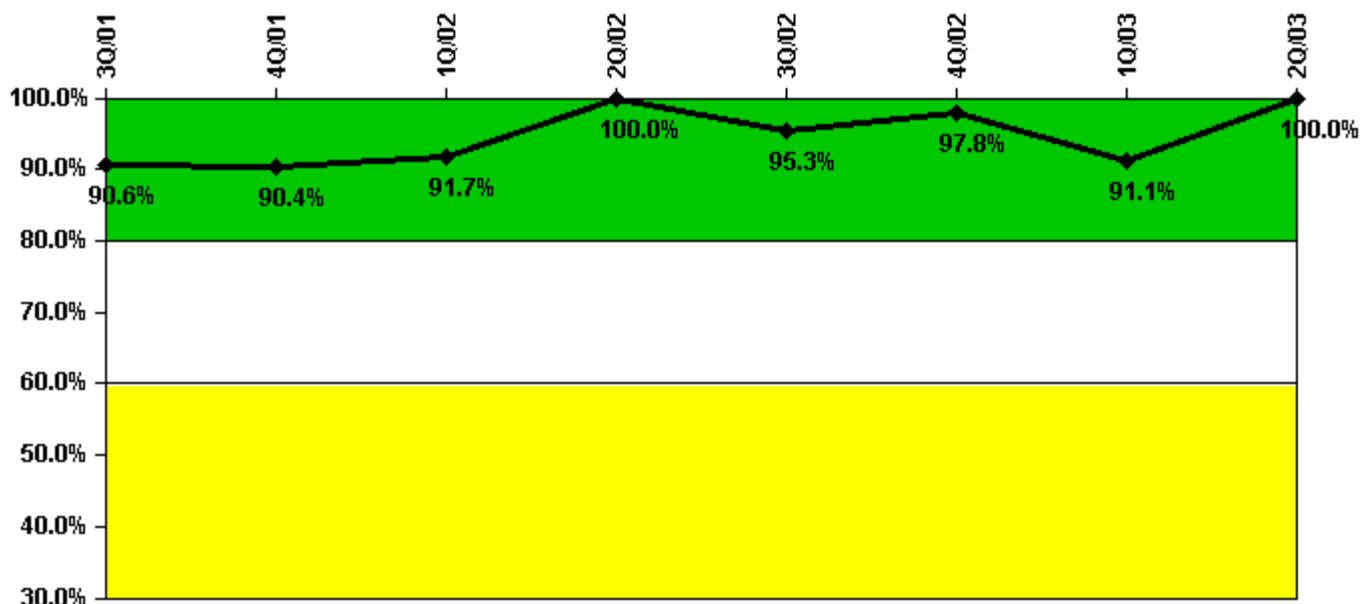
Thresholds: White < 90.0% Yellow < 70.0%

Notes

Drill/Exercise Performance	3Q/01	4Q/01	1Q/02	2Q/02	3Q/02	4Q/02	1Q/03	2Q/03
Successful opportunities	8.0	0	5.0	5.0	7.0	19.0	41.0	51.0
Total opportunities	11.0	0	6.0	6.0	7.0	23.0	44.0	52.0
Indicator value	95.3%	95.7%	93.7%	92.7%	93.1%	91.2%	91.0%	91.3%

Licensee Comments: none

ERO Drill Participation



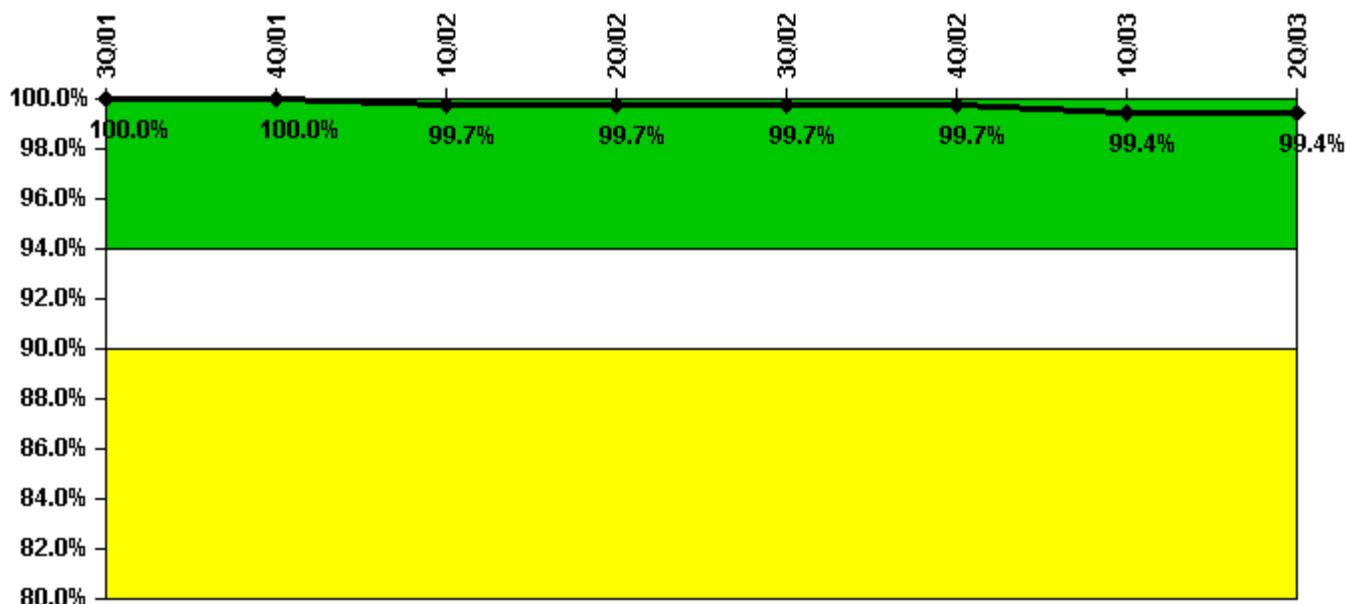
Thresholds: White < 80.0% Yellow < 60.0%

Notes

ERO Drill Participation	3Q/01	4Q/01	1Q/02	2Q/02	3Q/02	4Q/02	1Q/03	2Q/03
Participating Key personnel	48.0	47.0	44.0	43.0	41.0	44.0	41.0	47.0
Total Key personnel	53.0	52.0	48.0	43.0	43.0	45.0	45.0	47.0
Indicator value	90.6%	90.4%	91.7%	100.0%	95.3%	97.8%	91.1%	100.0%

Licensee Comments: none

Alert & Notification System



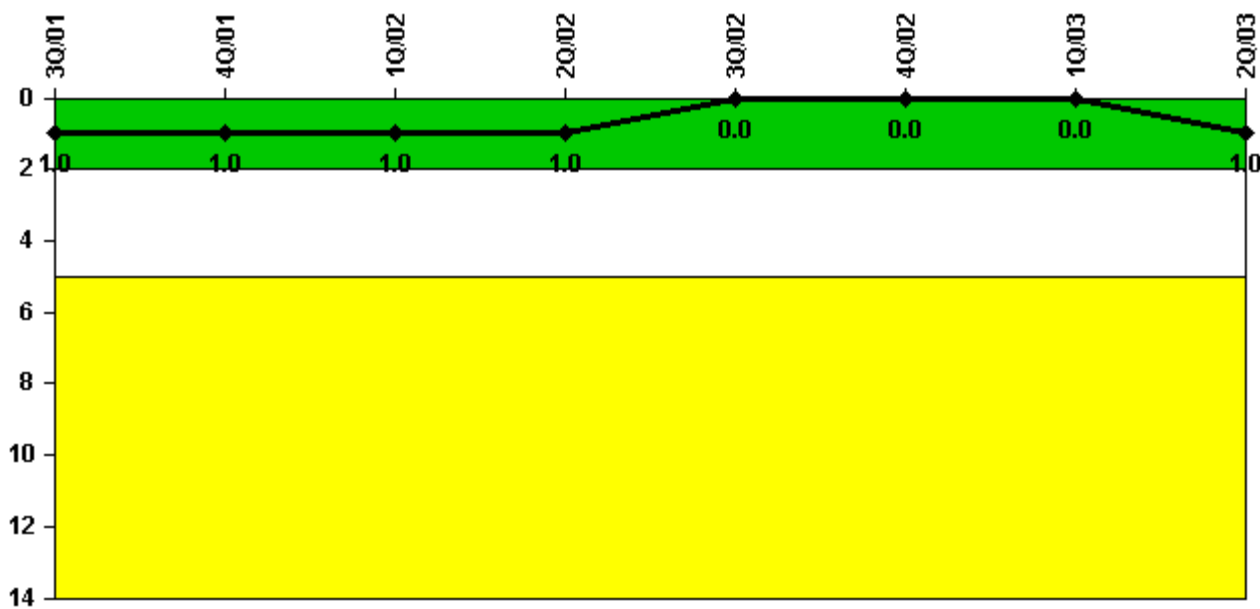
Thresholds: White < 94.0% Yellow < 90.0%

Notes

Alert & Notification System	3Q/01	4Q/01	1Q/02	2Q/02	3Q/02	4Q/02	1Q/03	2Q/03
Successful siren-tests	78	78	77	78	78	78	76	78
Total sirens-tests	78	78	78	78	78	78	78	78
Indicator value	100.0%	100.0%	99.7%	99.7%	99.7%	99.7%	99.4%	99.4%

Licensee Comments: none

Occupational Exposure Control Effectiveness



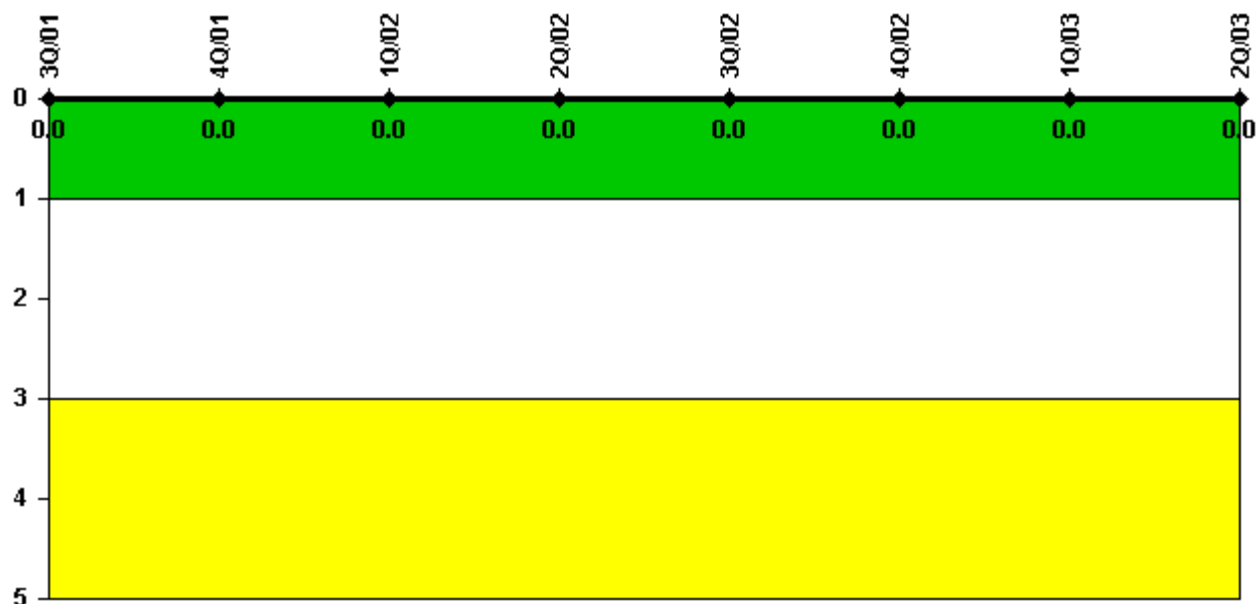
Thresholds: White > 2.0 Yellow > 5.0

Notes

Occupational Exposure Control Effectiveness	3Q/01	4Q/01	1Q/02	2Q/02	3Q/02	4Q/02	1Q/03	2Q/03
High radiation area occurrences	1	0	0	0	0	0	0	1
Very high radiation area occurrences	0	0	0	0	0	0	0	0
Unintended exposure occurrences	0	0	0	0	0	0	0	0
Indicator value	1	1	1	1	0	0	0	1

Licensee Comments: none

RETS/ODCM Radiological Effluent



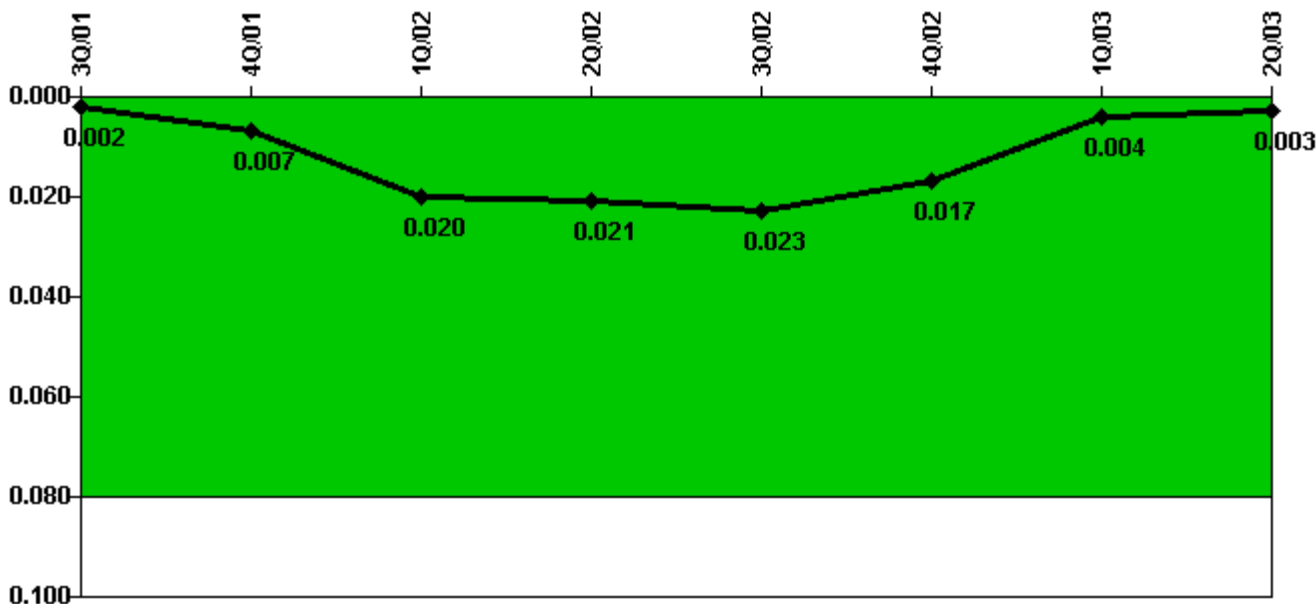
Thresholds: White > 1.0 Yellow > 3.0

Notes

RETS/ODCM Radiological Effluent	3Q/01	4Q/01	1Q/02	2Q/02	3Q/02	4Q/02	1Q/03	2Q/03
RETS/ODCM occurrences	0	0	0	0	0	0	0	0
Indicator value	0	0	0	0	0	0	0	0

Licensee Comments: none

Protected Area Security Performance Index



Thresholds: White > 0.080

Notes

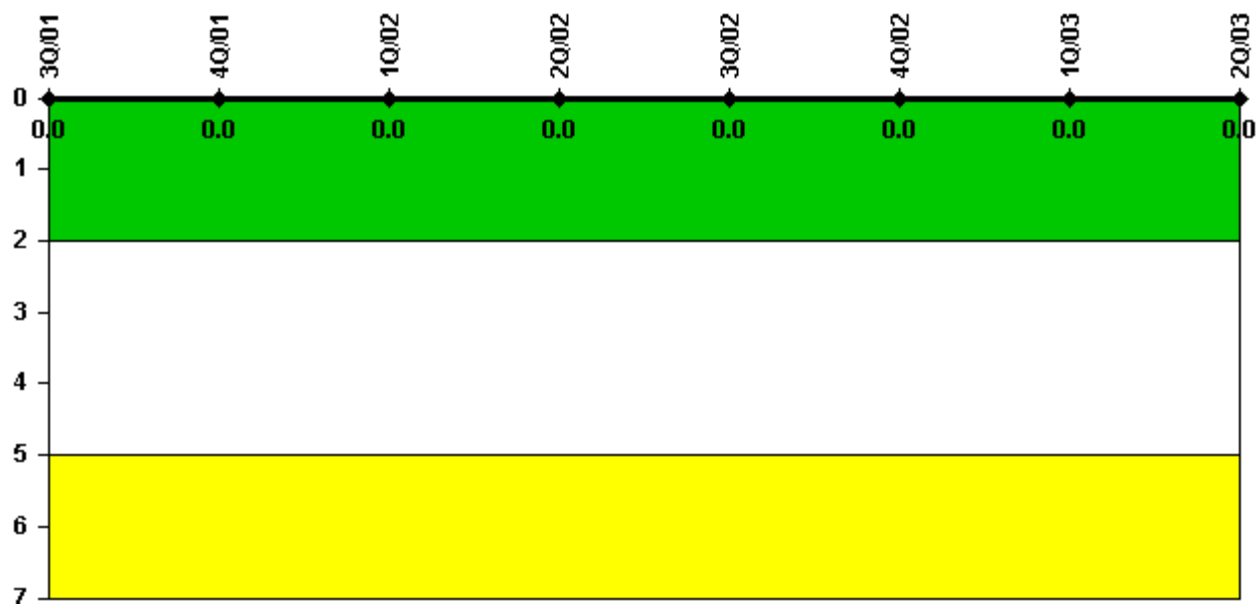
Protected Area Security Performance Index	3Q/01	4Q/01	1Q/02	2Q/02	3Q/02	4Q/02	1Q/03	2Q/03
IDS compensatory hours	1.70	113.70	227.80	19.20	44.00	1.10	1.30	2.70
CCTV compensatory hours	0	0	0	0	0	2.7	5.7	0
IDS normalization factor	1.00	1.00	1.00	1.00	1.00	1.00	1.00	1.00
CCTV normalization factor	1.0	1.0	1.0	1.0	1.0	1.0	1.0	1.0
Index Value	0.002	0.007	0.020	0.021	0.023	0.017	0.004	0.003

Licensee Comments:

4Q/02: During review of data for 4th Qtr 2002, an error was discovered for IDS Compensatory Hours. An additional 1.1 hours of comp time was added to November. This is an insignificant amount that does not affect the color of the indicator.

3Q/02: During review of data for 3rd Qtr 2002, an error was discovered for IDS Compensatory Hours. An additional 2.1 hours of comp time was added to September. This is an insignificant amount that does not affect the color of the indicator.

Personnel Screening Program



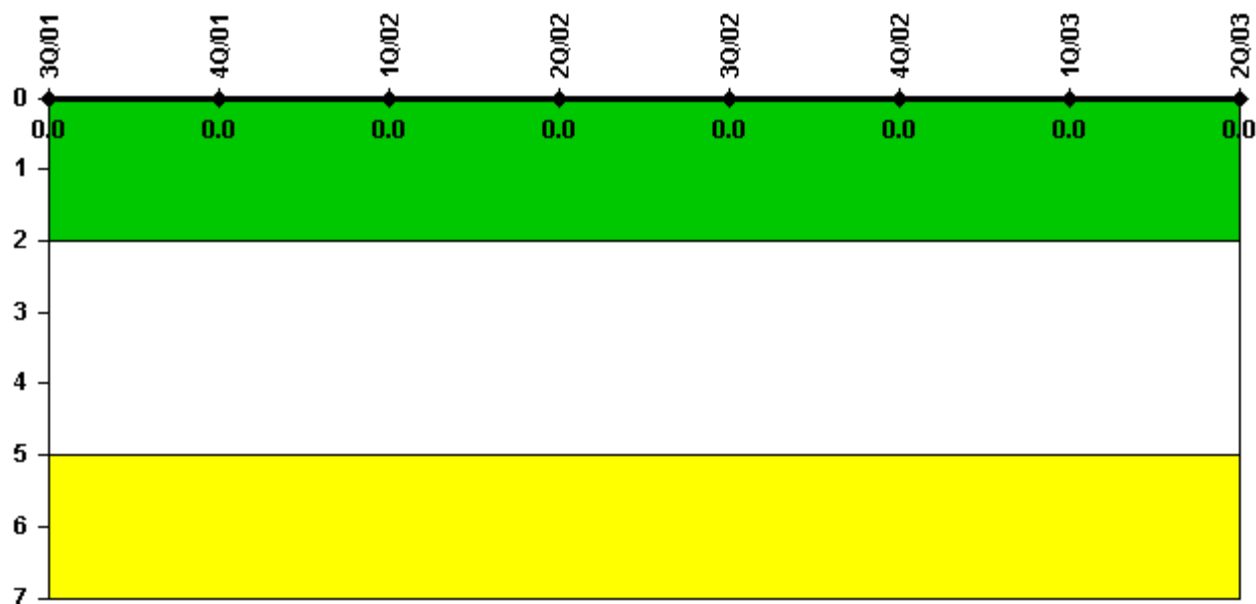
Thresholds: White > 2.0 Yellow > 5.0

Notes

Personnel Screening Program	3Q/01	4Q/01	1Q/02	2Q/02	3Q/02	4Q/02	1Q/03	2Q/03
Program failures	0	0	0	0	0	0	0	0
Indicator value	0	0	0	0	0	0	0	0

Licensee Comments: none

FFD/Personnel Reliability



Thresholds: White > 2.0 Yellow > 5.0

Notes

FFD/Personnel Reliability	3Q/01	4Q/01	1Q/02	2Q/02	3Q/02	4Q/02	1Q/03	2Q/03
Program Failures	0	0	0	0	0	0	0	0
Indicator value	0	0	0	0	0	0	0	0

Licensee Comments: none

▲ [PI Summary](#) | [Inspection Findings Summary](#) | [Reactor Oversight Process](#)

Last Modified: July 22, 2003