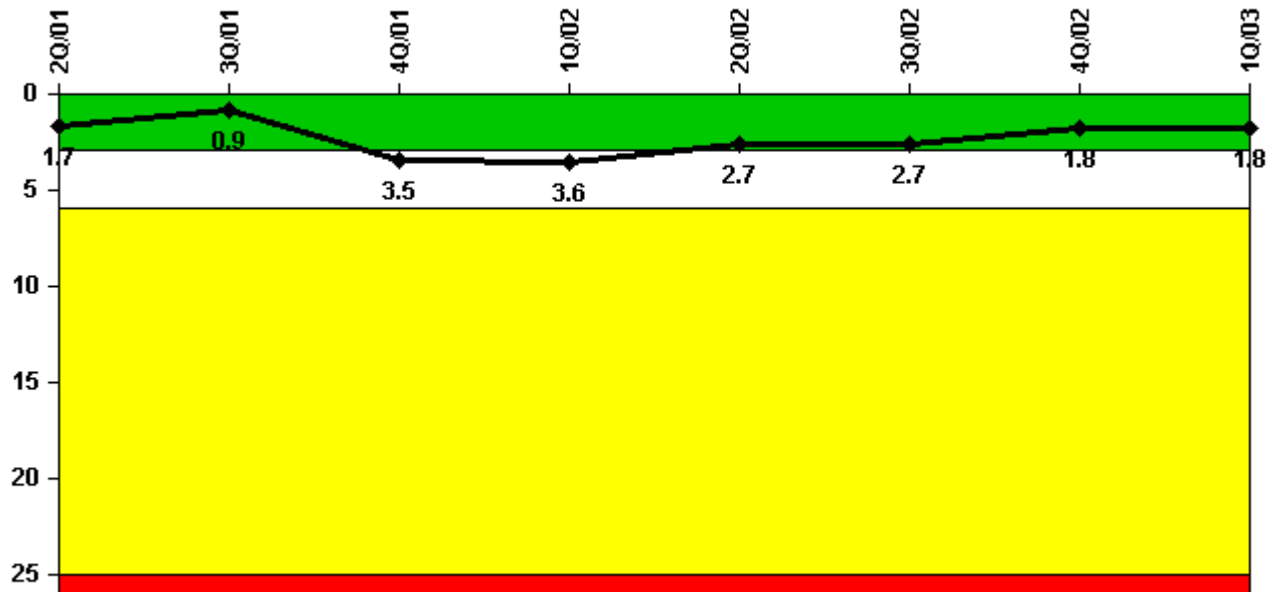


## Nine Mile Point 2

### 1Q/2003 Performance Indicators

Licensee's General Comments: none

#### Unplanned Scrams per 7000 Critical Hrs



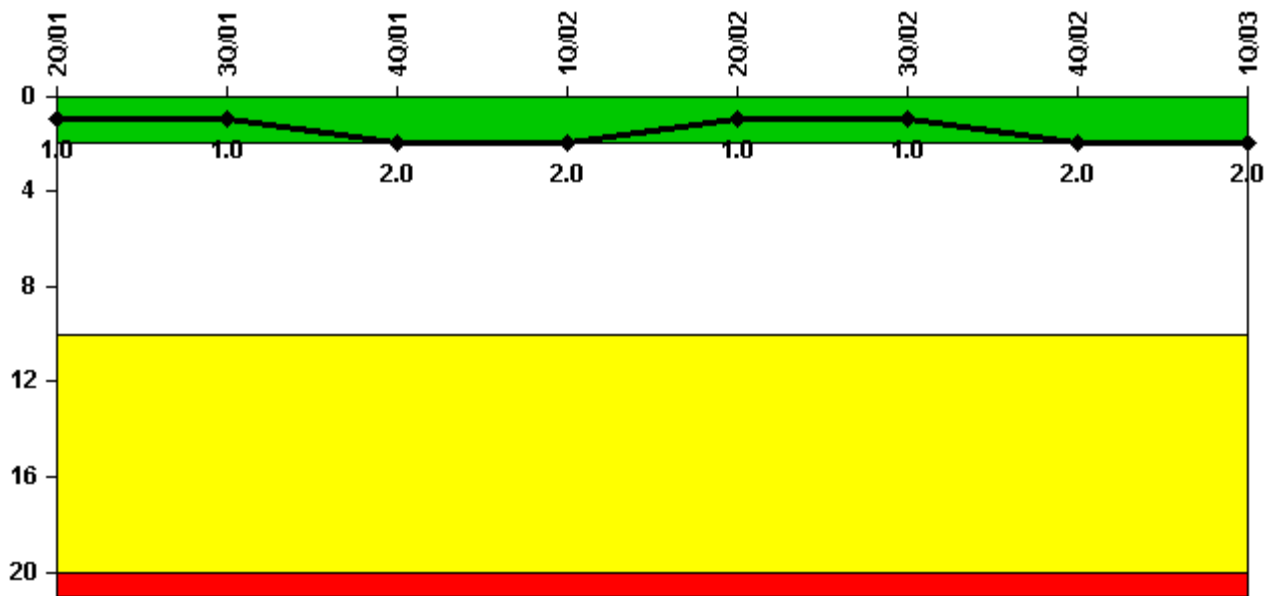
**Thresholds: White > 3.0 Yellow > 6.0 Red > 25.0**

**Notes**

Unplanned Scrams per 7000 Critical Hrs	2Q/01	3Q/01	4Q/01	1Q/02	2Q/02	3Q/02	4Q/02	1Q/03
Unplanned scrams	1.0	0	3.0	0	0	0	2.0	0
Critical hours	1989.8	2040.4	2026.9	1777.9	1841.3	2208.0	1752.5	2160.0
Indicator value	1.7	0.9	3.5	3.6	2.7	2.7	1.8	1.8

Licensee Comments: none

### Scrams with Loss of Normal Heat Removal



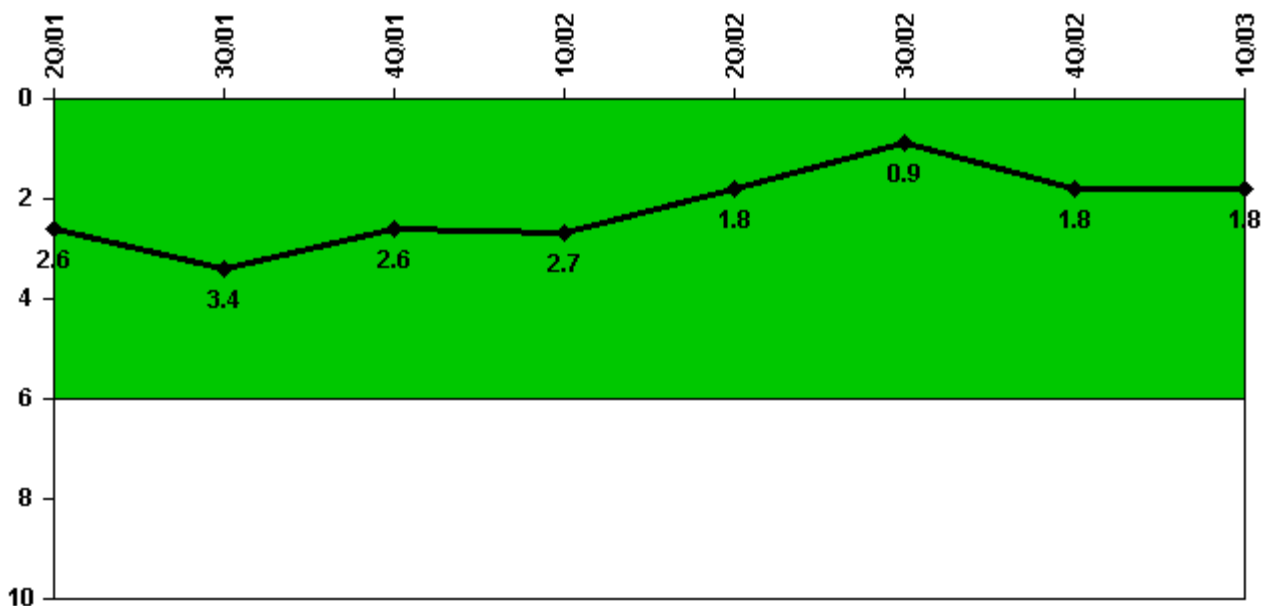
Thresholds: White > 2.0 Yellow > 10.0 Red > 20.0

#### Notes

Scrams with Loss of Normal Heat Removal	2Q/01	3Q/01	4Q/01	1Q/02	2Q/02	3Q/02	4Q/02	1Q/03
Scrams	0	0	1.0	0	0	0	1.0	0
Indicator value	1.0	1.0	2.0	2.0	1.0	1.0	2.0	2.0

Licensee Comments: none

### Unplanned Power Changes per 7000 Critical Hrs



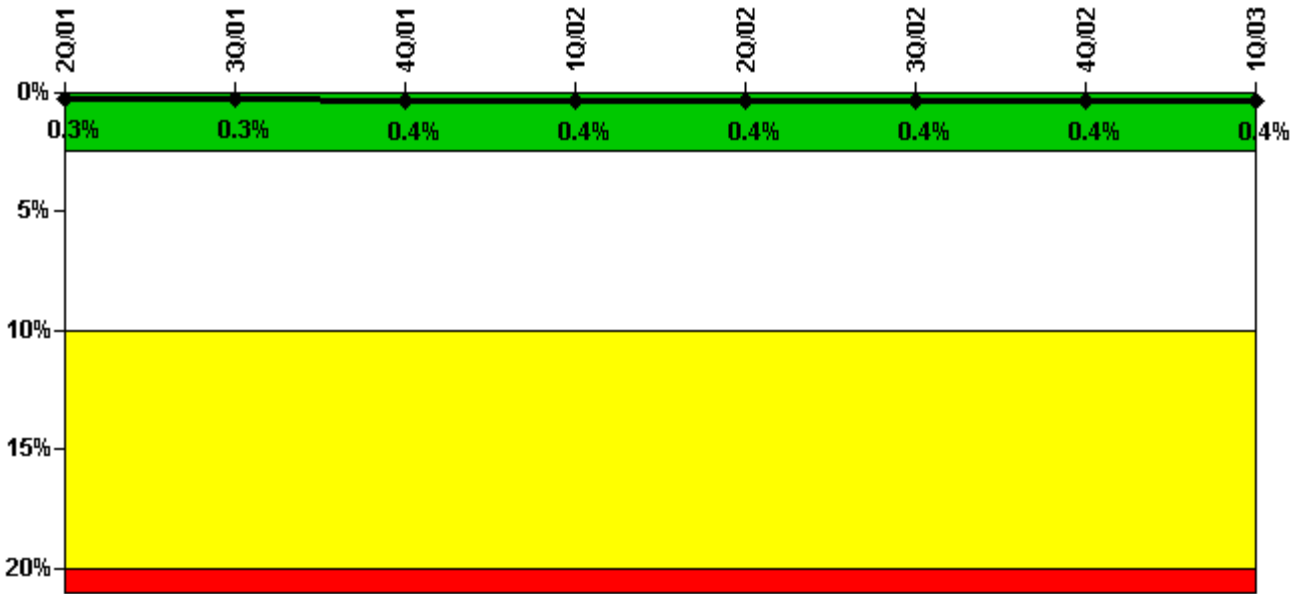
Thresholds: White > 6.0

#### Notes

Unplanned Power Changes per 7000 Critical Hrs	2Q/01	3Q/01	4Q/01	1Q/02	2Q/02	3Q/02	4Q/02	1Q/03
Unplanned power changes	2.0	1.0	0	0	1.0	0	1.0	0
Critical hours	1989.8	2040.4	2026.9	1777.9	1841.3	2208.0	1752.5	2160.0
Indicator value	2.6	3.4	2.6	2.7	1.8	0.9	1.8	1.8

Licensee Comments: none

### Safety System Unavailability, Emergency AC Power, >2EDG



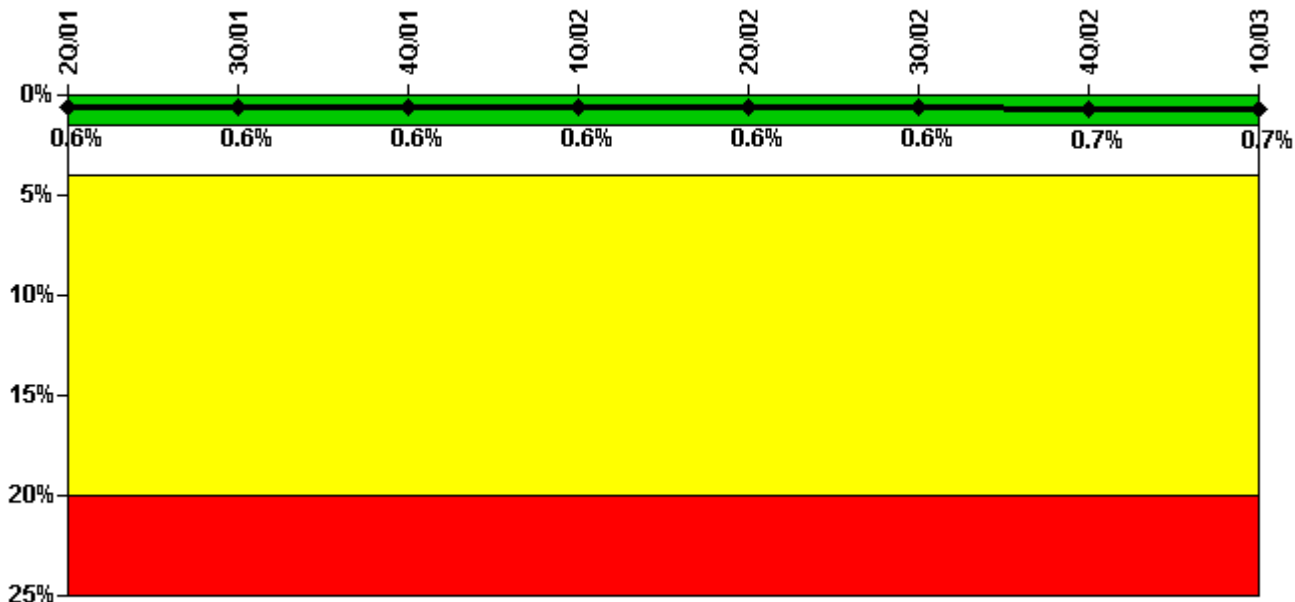
Thresholds: White > 2.5% Yellow > 10.0% Red > 20.0%

#### Notes

Safety System Unavailability, Emergency AC Power, >2EDG	2Q/01	3Q/01	4Q/01	1Q/02	2Q/02	3Q/02	4Q/02	1Q/03
<b>Train 1</b>								
Planned unavailable hours	0	9.00	0	1.15	0	0	12.00	15.10
Unplanned unavailable hours	0	27.80	0	24.55	0	0	0	0
Fault exposure hours	0	0	0	0	0	0	0	0
Effective Reset hours	0	0	0	0	0	0	0	0
Required hours	2183.00	2208.00	2209.00	2160.00	2183.00	2208.00	2209.00	2160.00
<b>Train 2</b>								
Planned unavailable hours	0	4.50	0	0	14.80	16.00	0.20	0
Unplanned unavailable hours	0	0	0	2.50	0	0	3.90	0
Fault exposure hours	0	0	0	0	0	0	0	0
Effective Reset hours	0	0	0	0	0	0	0	0
Required hours	2183.00	2208.00	2209.00	2160.00	2183.00	2208.00	2209.00	2160.00
<b>Train 3</b>								
Planned unavailable hours	2.00	2.30	31.60	1.50	3.00	2.50	5.20	3.90
Unplanned unavailable hours	0	0	0	0	0	0	0	0
Fault exposure hours	0	0	0	0	0	0	0	0
Effective Reset hours	0	0	0	0	0	0	0	0
Required hours	2060.75	2031.62	2027.00	1777.93	1841.00	2208.00	2209.00	2160.00
Indicator value	0.3%	0.3%	0.4%	0.4%	0.4%	0.4%	0.4%	0.4%

Licensee Comments: none

### Safety System Unavailability, High Pressure Injection System (HPCS)



Thresholds: White > 1.5% Yellow > 4.0% Red > 20.0%

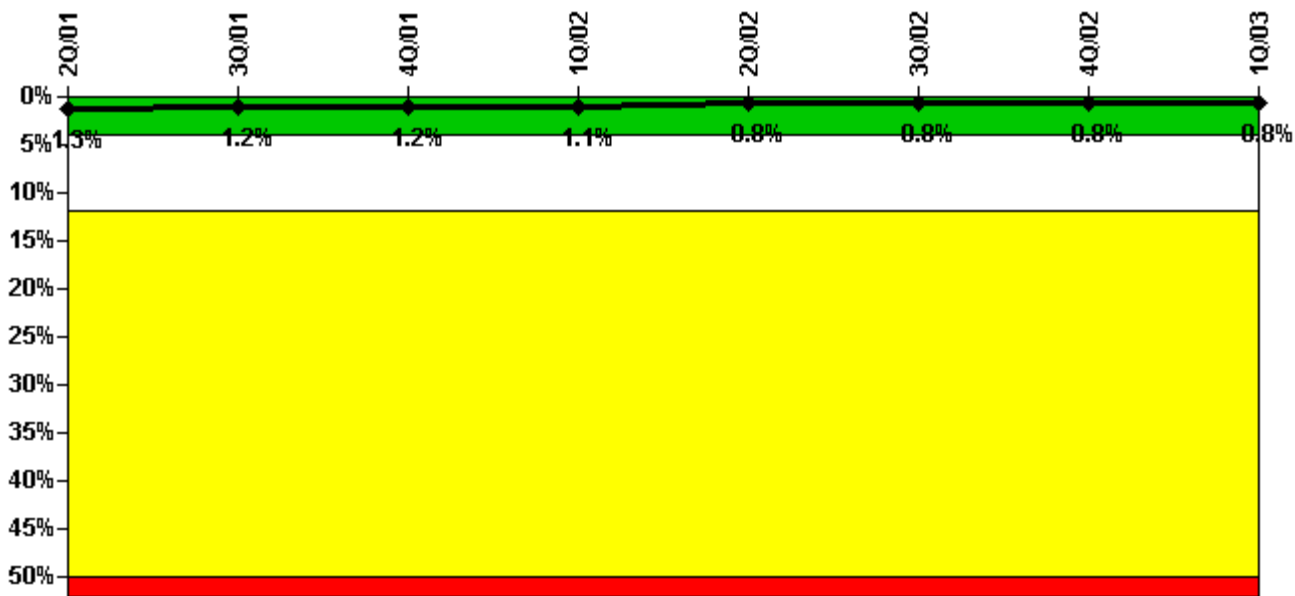
#### Notes

Safety System Unavailability, High Pressure Injection System (HPCS)	2Q/01	3Q/01	4Q/01	1Q/02	2Q/02	3Q/02	4Q/02	1Q/03
Train 1								
Planned unavailable hours	6.80	3.02	2.30	4.70	1.55	12.30	18.03	15.60
Unplanned unavailable hours	0	0	0	0	0	0	0	0
Fault exposure hours	0	0	0	0	0	0	0	0
Effective Reset hours	0	0	0	0	0	0	0	0
Required hours	1989.83	2040.42	2027.00	1777.93	1841.00	2238.00	1752.50	2160.00
Indicator value	0.6%	0.6%	0.6%	0.6%	0.6%	0.6%	0.7%	0.7%

Licensee Comments:

4Q/00: After a review of documentation, 21.63 hours of planned unavailability were added.

### Safety System Unavailability, Heat Removal System (RCIC)



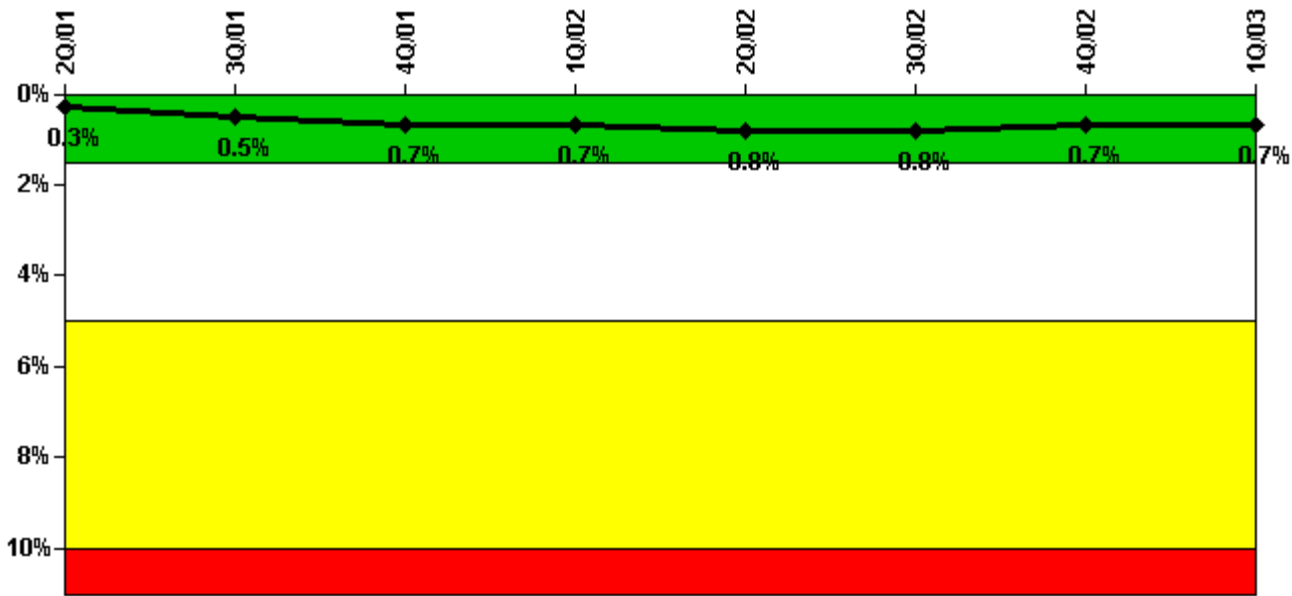
Thresholds: White > 4.0% Yellow > 12.0% Red > 50.0%

#### Notes

Safety System Unavailability, Heat Removal System (RCIC)	2Q/01	3Q/01	4Q/01	1Q/02	2Q/02	3Q/02	4Q/02	1Q/03
Train 1								
Planned unavailable hours	0	0	0	4.00	21.00	37.00	0	14.00
Unplanned unavailable hours	11.20	0	14.30	0	0	0	0	0
Fault exposure hours	0	0	1.60	0	0	0	0	0
Effective Reset hours	0	0	0	0	0	0	0	0
Required hours	1989.83	2040.42	2026.93	1777.93	1841.00	2208.00	1752.50	2160.00
Indicator value	1.3%	1.2%	1.2%	1.1%	0.8%	0.8%	0.8%	0.8%

Licensee Comments: none

### Safety System Unavailability, Residual Heat Removal System



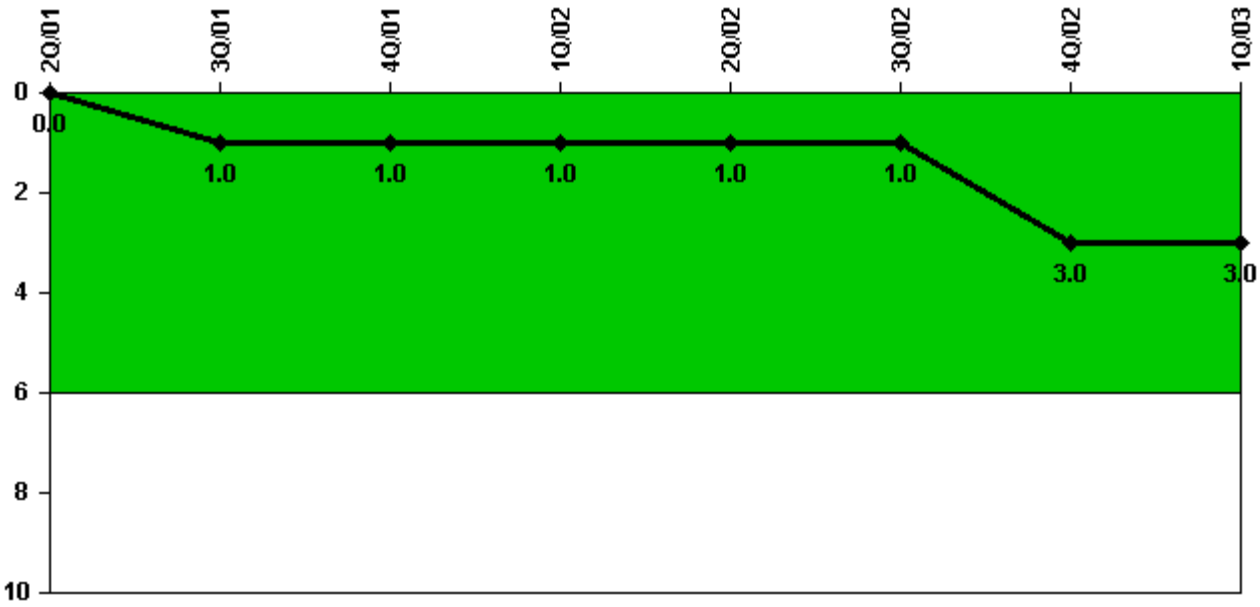
Thresholds: White > 1.5% Yellow > 5.0% Red > 10.0%

#### Notes

Safety System Unavailability, Residual Heat Removal System	2Q/01	3Q/01	4Q/01	1Q/02	2Q/02	3Q/02	4Q/02	1Q/03
<b>Train 1</b>								
Planned unavailable hours	0	22.70	0	0	30.20	10.30	0	0
Unplanned unavailable hours	0	0	0	0	0	10.70	0	0
Fault exposure hours	0	0	0	0	0	0	0	0
Effective Reset hours	0	0	0	0	0	0	0	0
Required hours	2183.00	2208.00	2209.00	1899.00	2019.00	2208.00	2209.00	2160.00
<b>Train 2</b>								
Planned unavailable hours	0	6.60	0	7.80	23.20	0	13.10	20.50
Unplanned unavailable hours	0	80.50	53.80	0	0	0	0	0
Fault exposure hours	0	0	71.90	0	0	0	0	0
Effective Reset hours	0	0	0	0	0	0	0	0
Required hours	2183.00	2208.00	2209.00	1899.00	2019.00	2208.00	2209.00	2160.00
Indicator value	0.3%	0.5%	0.7%	0.7%	0.8%	0.8%	0.7%	0.7%

Licensee Comments: none

### Safety System Functional Failures (BWR)



Thresholds: White > 6.0

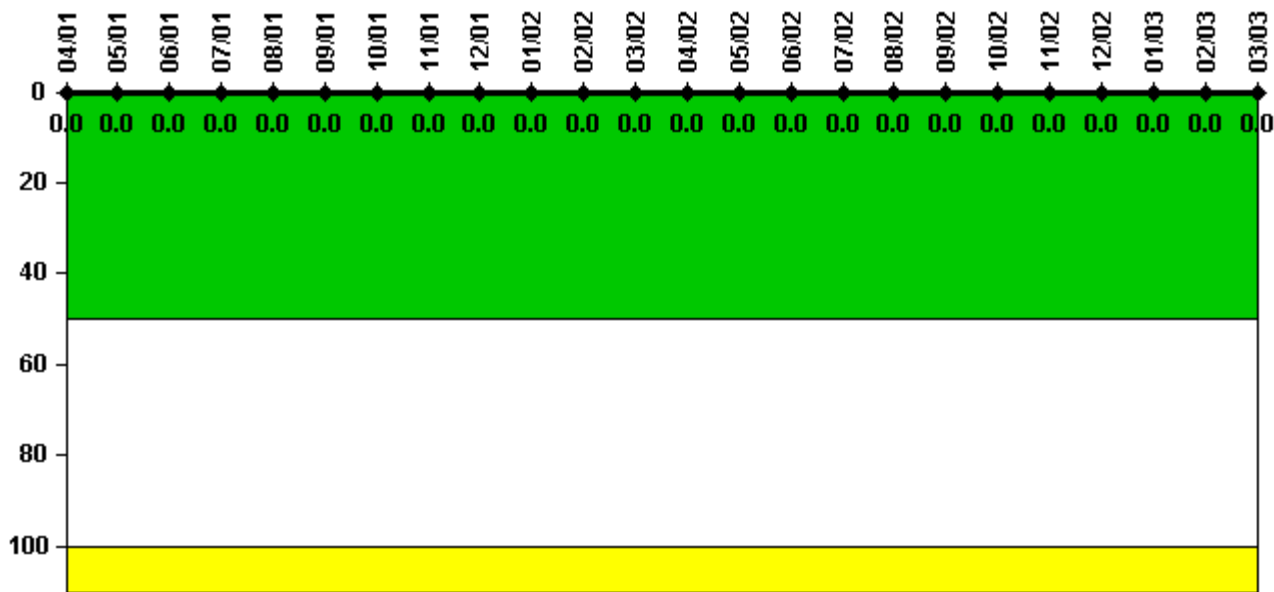
#### Notes

Safety System Functional Failures (BWR)	2Q/01	3Q/01	4Q/01	1Q/02	2Q/02	3Q/02	4Q/02	1Q/03
Safety System Functional Failures	0	1	0	0	0	1	2	0
Indicator value	0	1	1	1	1	1	3	3

Licensee Comments: none



### Reactor Coolant System Activity



Thresholds: White > 50.0 Yellow > 100.0

#### Notes

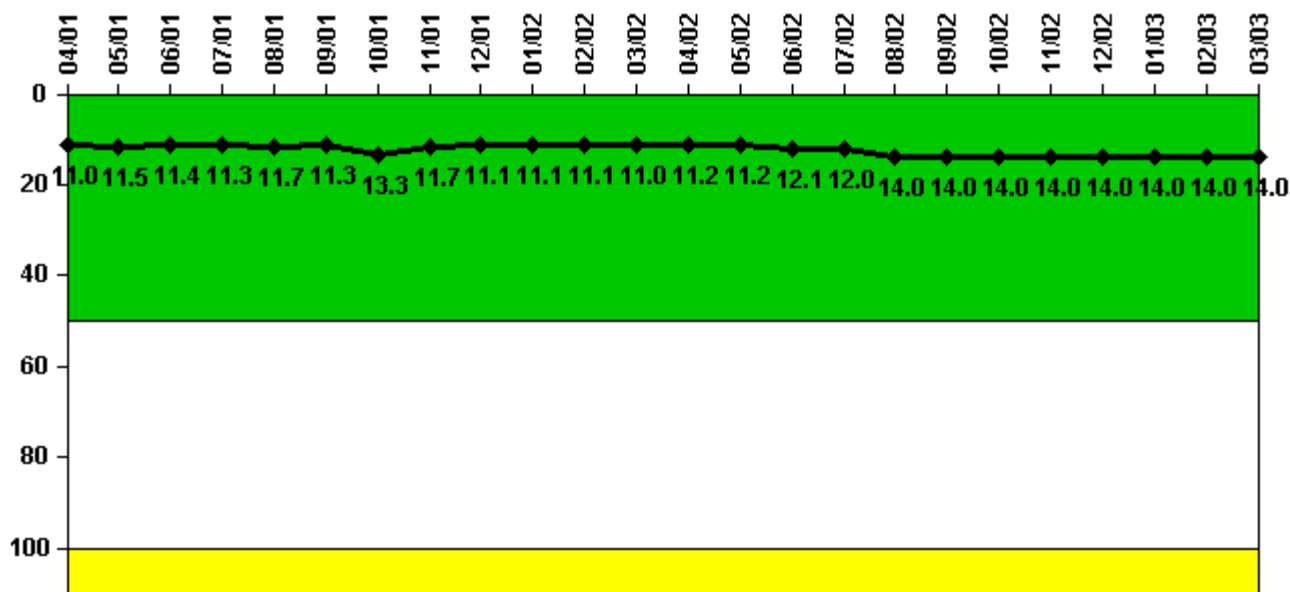
Reactor Coolant System Activity	4/01	5/01	6/01	7/01	8/01	9/01	10/01	11/01	12/01	1/02	2/02	3/02
Maximum activity	0.000005	0	0.000003	0.000002	0	0	0	0	0	0	0	0
Technical specification limit	0.2	0.2	0.2	0.2	0.2	0.2	0.2	0.2	0.2	0.2	0.2	0.2
Indicator value	0	0	0	0	0	0	0	0	0	0	0	0

Reactor Coolant System Activity	4/02	5/02	6/02	7/02	8/02	9/02	10/02	11/02	12/02	1/03	2/03	3/03
Maximum activity	0	0	0.000002	0.000003	0.000003	0.000002	0.000003	0	0.000002	0.000002	0	0.000003
Technical specification limit	0.2	0.2	0.2	0.2	0.2	0.2	0.2	0.2	0.2	0.2	0.2	0.2
Indicator value	0	0	0	0	0	0	0	0	0	0	0	0

Licensee Comments: none

### Reactor Coolant System Leakage



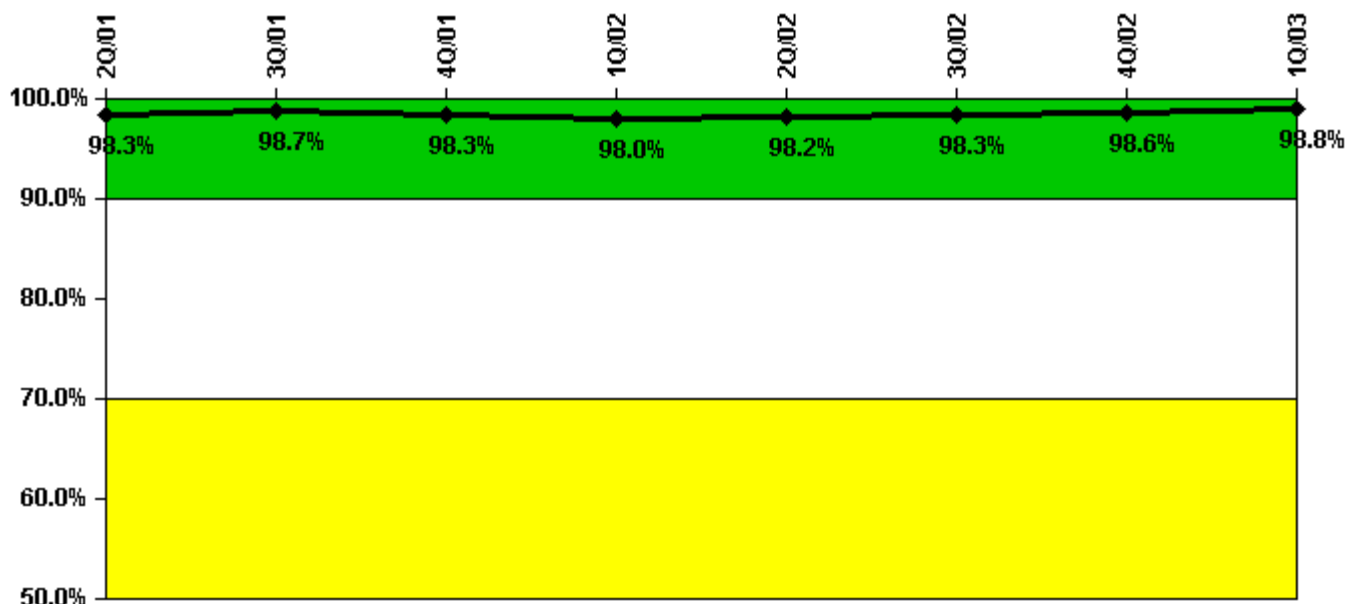
Thresholds: White > 50.0 Yellow > 100.0

**Notes**

Reactor Coolant System Leakage	4/01	5/01	6/01	7/01	8/01	9/01	10/01	11/01	12/01	1/02	2/02	3/02
Maximum leakage	2.750	2.870	2.850	2.820	2.920	2.820	3.320	2.920	2.770	2.770	2.770	2.750
Technical specification limit	25.0	25.0	25.0	25.0	25.0	25.0	25.0	25.0	25.0	25.0	25.0	25.0
Indicator value	11.0	11.5	11.4	11.3	11.7	11.3	13.3	11.7	11.1	11.1	11.1	11.0
Reactor Coolant System Leakage	4/02	5/02	6/02	7/02	8/02	9/02	10/02	11/02	12/02	1/03	2/03	3/03
Maximum leakage	2.800	2.800	3.020	3.000	3.500	3.500	3.500	3.500	3.500	3.500	3.500	3.500
Technical specification limit	25.0	25.0	25.0	25.0	25.0	25.0	25.0	25.0	25.0	25.0	25.0	25.0
Indicator value	11.2	11.2	12.1	12.0	14.0	14.0	14.0	14.0	14.0	14.0	14.0	14.0

Licensee Comments: none

### Drill/Exercise Performance



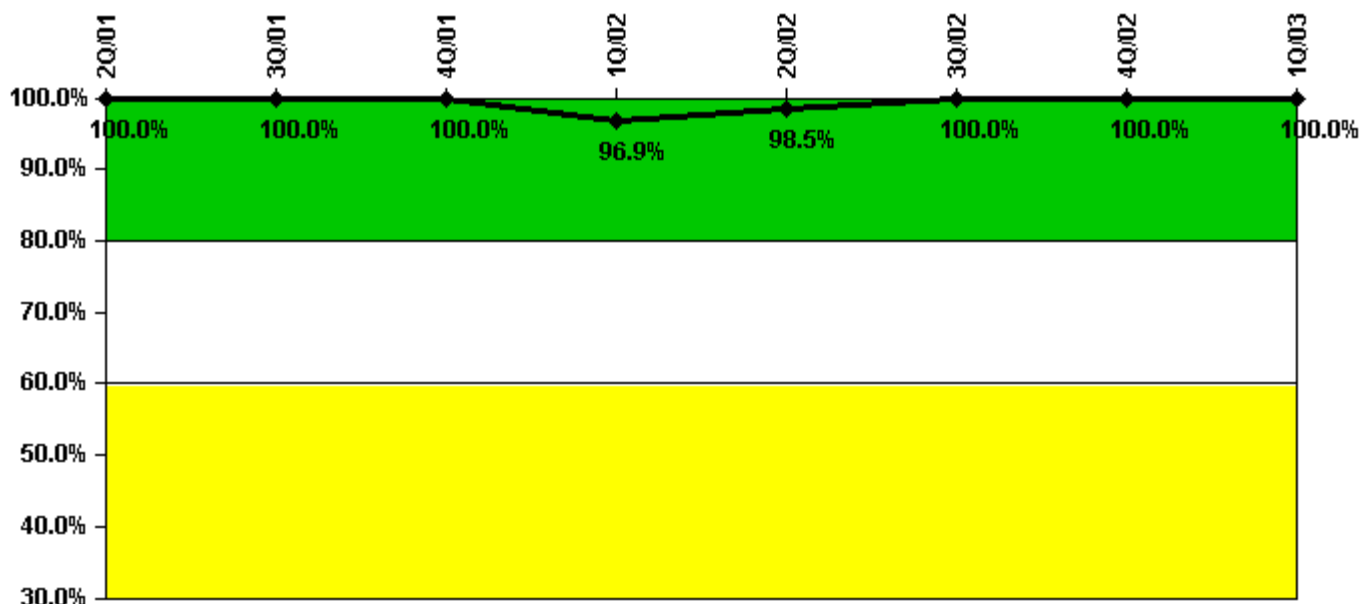
Thresholds: White < 90.0% Yellow < 70.0%

#### Notes

Drill/Exercise Performance	2Q/01	3Q/01	4Q/01	1Q/02	2Q/02	3Q/02	4Q/02	1Q/03
Successful opportunities	45.0	56.0	29.0	17.0	87.0	42.0	62.0	4.0
Total opportunities	46.0	56.0	30.0	18.0	88.0	42.0	62.0	4.0
Indicator value	98.3%	98.7%	98.3%	98.0%	98.2%	98.3%	98.6%	98.8%

Licensee Comments: none

### ERO Drill Participation



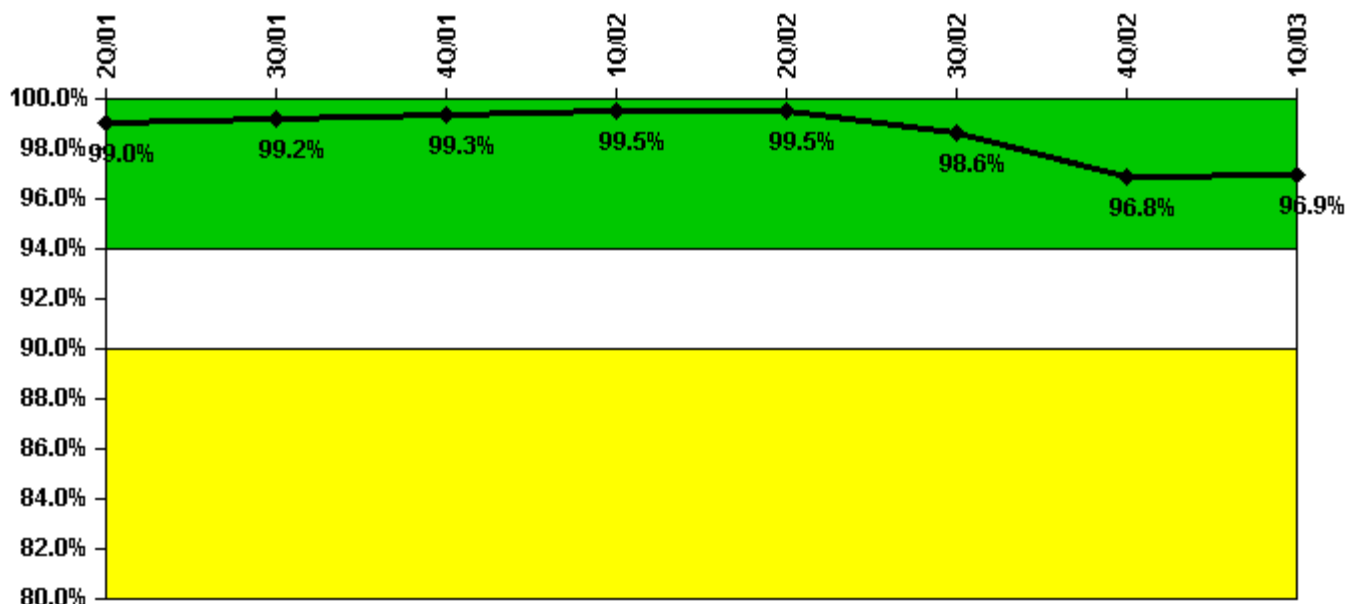
Thresholds: White < 80.0% Yellow < 60.0%

#### Notes

ERO Drill Participation	2Q/01	3Q/01	4Q/01	1Q/02	2Q/02	3Q/02	4Q/02	1Q/03
Participating Key personnel	58.0	60.0	62.0	63.0	66.0	68.0	68.0	63.0
Total Key personnel	58.0	60.0	62.0	65.0	67.0	68.0	68.0	63.0
Indicator value	100.0%	100.0%	100.0%	96.9%	98.5%	100.0%	100.0%	100.0%

Licensee Comments: none

### Alert & Notification System



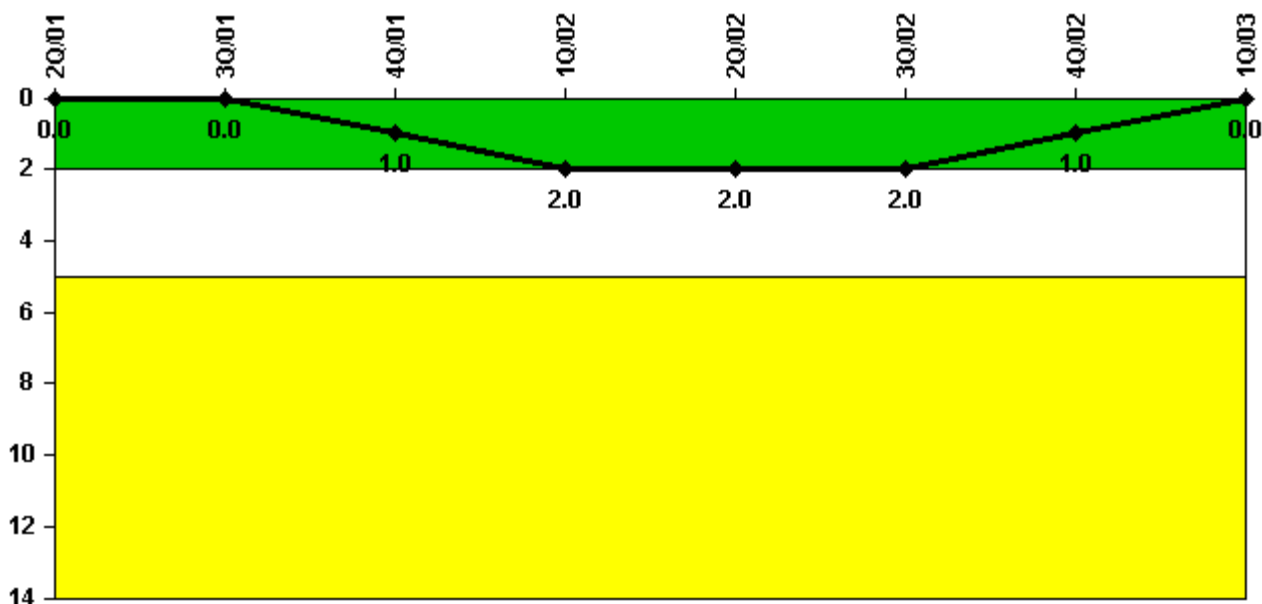
Thresholds: White < 94.0% Yellow < 90.0%

#### Notes

Alert & Notification System	2Q/01	3Q/01	4Q/01	1Q/02	2Q/02	3Q/02	4Q/02	1Q/03
Successful siren-tests	660	516	555	515	512	570	517	516
Total sirens-tests	666	518	555	518	518	592	555	518
Indicator value	99.0%	99.2%	99.3%	99.5%	99.5%	98.6%	96.8%	96.9%

Licensee Comments: none

### Occupational Exposure Control Effectiveness



Thresholds: White > 2.0 Yellow > 5.0

**Notes**

Occupational Exposure Control Effectiveness	2Q/01	3Q/01	4Q/01	1Q/02	2Q/02	3Q/02	4Q/02	1Q/03
High radiation area occurrences	0	0	1	0	0	0	0	0
Very high radiation area occurrences	0	0	0	0	0	0	0	0
Unintended exposure occurrences	0	0	0	1	0	0	0	0
Indicator value	0	0	1	2	2	2	1	0

Licensee Comments: none

### RETS/ODCM Radiological Effluent



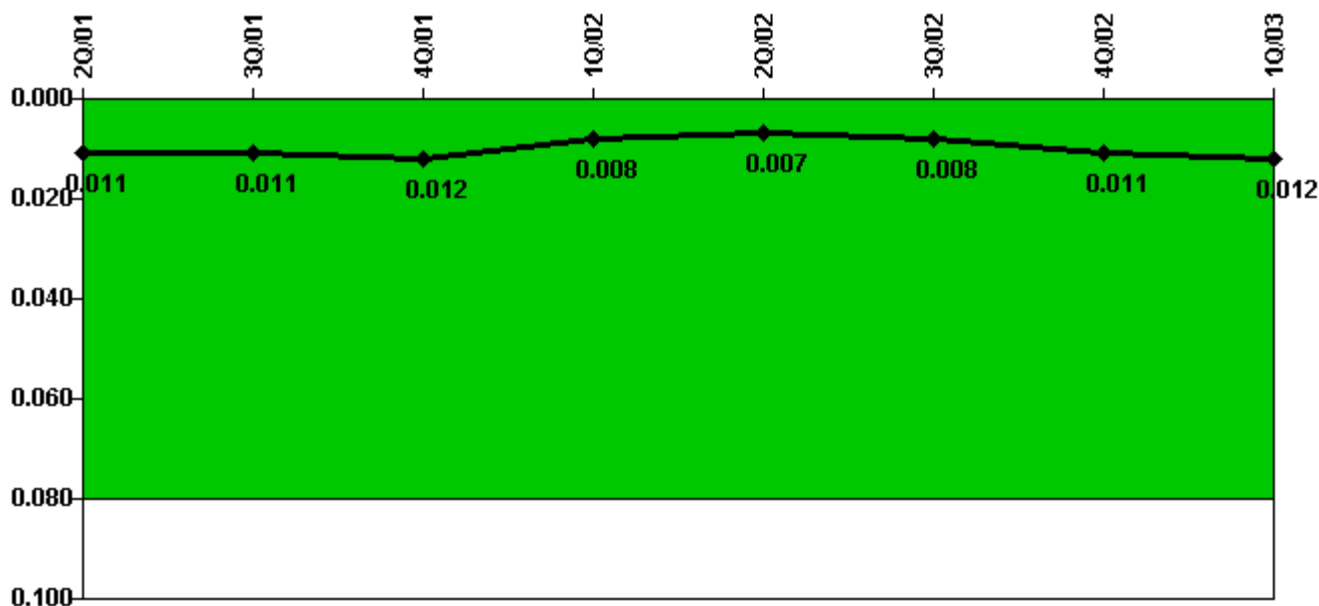
Thresholds: White > 1.0 Yellow > 3.0

#### Notes

RETS/ODCM Radiological Effluent	2Q/01	3Q/01	4Q/01	1Q/02	2Q/02	3Q/02	4Q/02	1Q/03
RETS/ODCM occurrences	0	0	0	0	0	0	0	0
Indicator value	0	0	0	0	0	0	0	0

Licensee Comments: none

### Protected Area Security Performance Index



Thresholds: White > 0.080

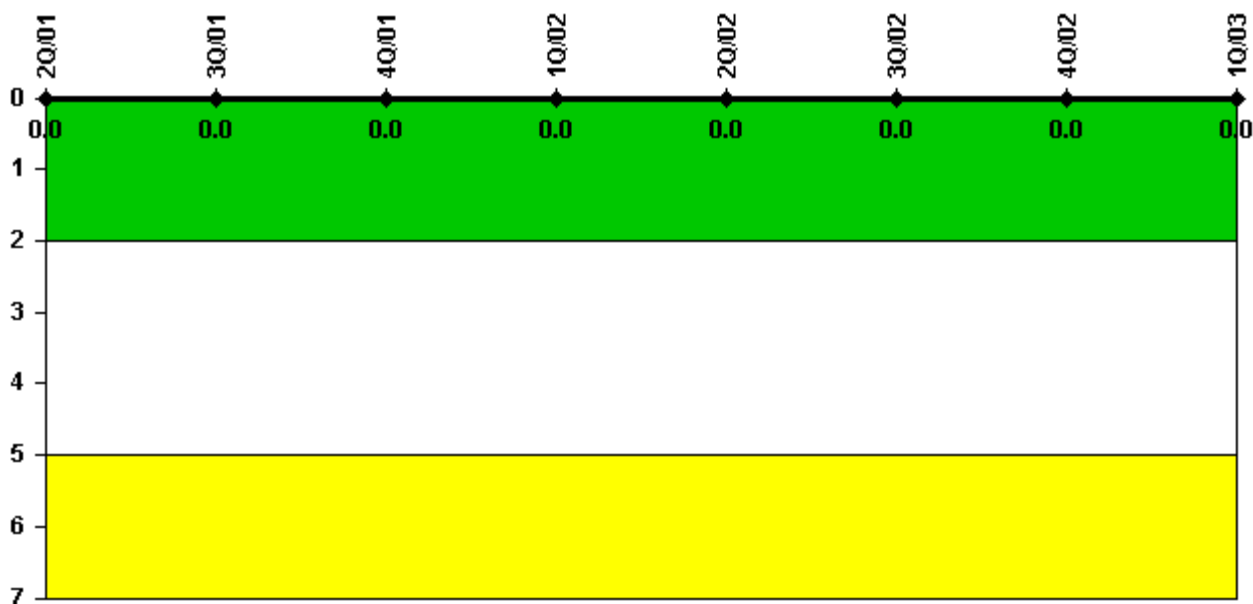
#### Notes

Protected Area Security Performance Index	2Q/01	3Q/01	4Q/01	1Q/02	2Q/02	3Q/02	4Q/02	1Q/03
IDS compensatory hours	133.20	12.40	50.20	43.40	96.30	60.40	132.80	79.60
CCTV compensatory hours	8.1	0	0.5	0	0	0	0	0
IDS normalization factor	1.70	1.70	1.70	1.70	1.70	1.70	1.70	1.70
CCTV normalization factor	1.3	1.3	1.3	1.3	1.3	1.3	1.3	1.3
Index Value	0.011	0.011	0.012	0.008	0.007	0.008	0.011	0.012

Licensee Comments: none



### Personnel Screening Program



Thresholds: White > 2.0 Yellow > 5.0

#### Notes

Personnel Screening Program	2Q/01	3Q/01	4Q/01	1Q/02	2Q/02	3Q/02	4Q/02	1Q/03
Program failures	0	0	0	0	0	0	0	0
Indicator value	0	0	0	0	0	0	0	0

Licensee Comments: none

### FFD/Personnel Reliability



Thresholds: White > 2.0 Yellow > 5.0

#### Notes

FFD/Personnel Reliability	2Q/01	3Q/01	4Q/01	1Q/02	2Q/02	3Q/02	4Q/02	1Q/03
Program Failures	0	0	0	0	0	0	0	0
Indicator value	0	0	0	0	0	0	0	0

Licensee Comments: none

▲ [PI Summary](#) | [Inspection Findings Summary](#) | [Reactor Oversight Process](#)

Last Modified: April 22, 2003