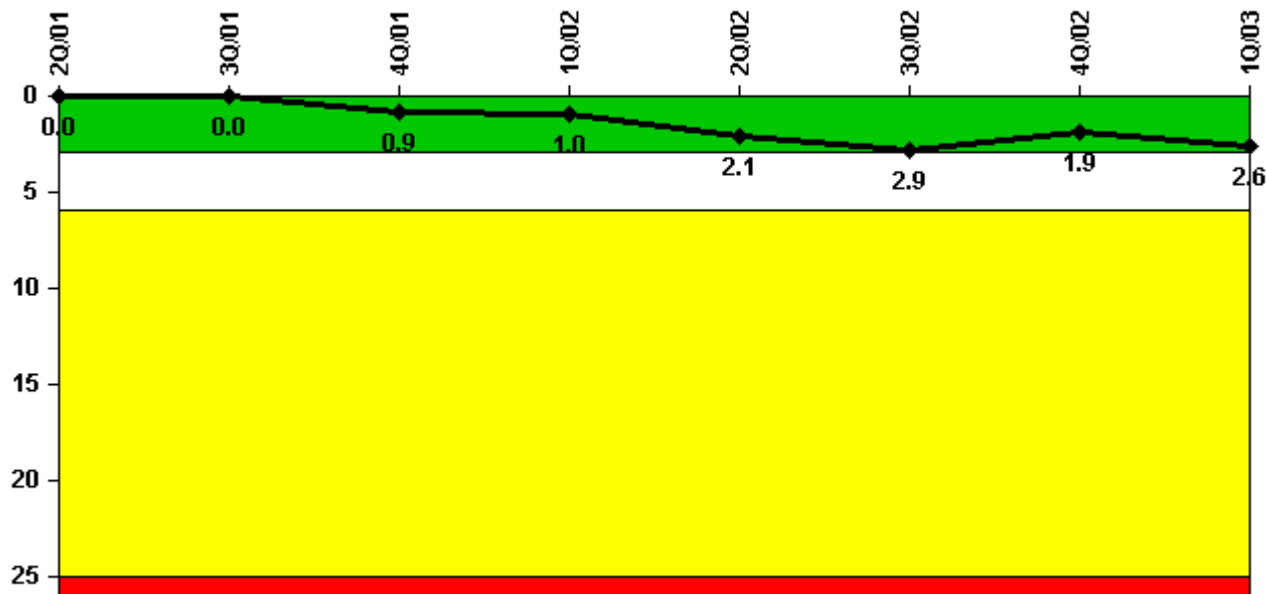


D.C. Cook 2

1Q/2003 Performance Indicators

Licensee's General Comments: none

Unplanned Scrams per 7000 Critical Hrs



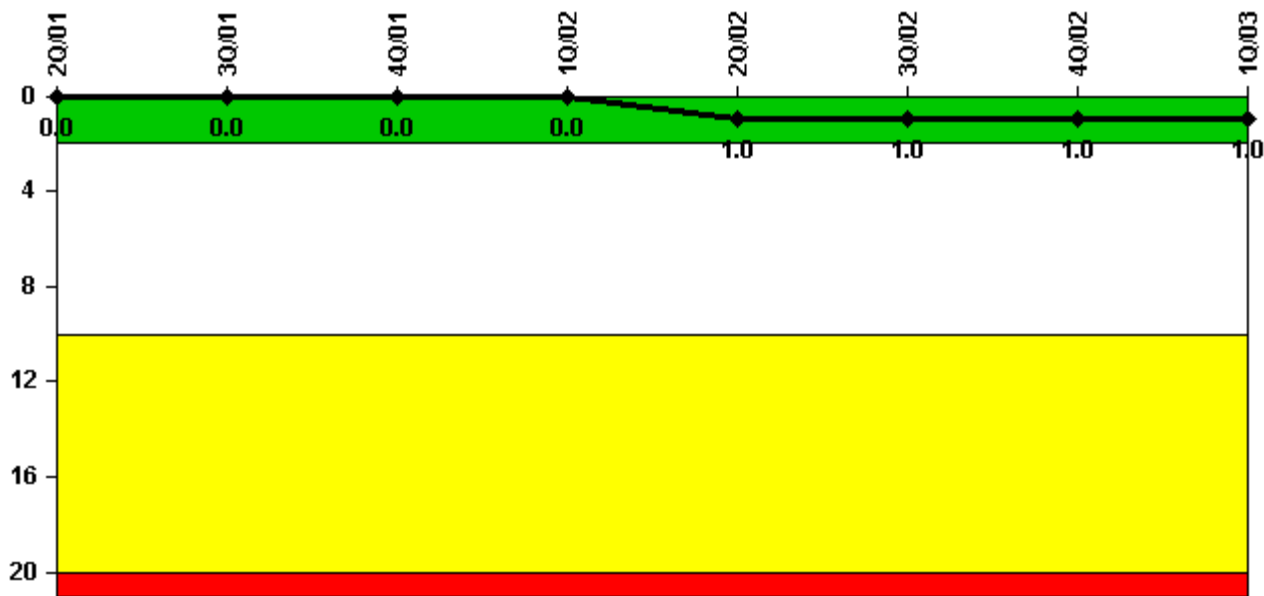
Thresholds: White > 3.0 Yellow > 6.0 Red > 25.0

Notes

Unplanned Scrams per 7000 Critical Hrs	2Q/01	3Q/01	4Q/01	1Q/02	2Q/02	3Q/02	4Q/02	1Q/03
Unplanned scrams	0	0	1.0	0	1.0	1.0	0	1.0
Critical hours	2183.0	1454.0	2008.0	1261.5	1965.5	2027.5	2209.0	1884.6
Indicator value	0	0	0.9	1.0	2.1	2.9	1.9	2.6

Licensee Comments: none

Scrams with Loss of Normal Heat Removal



Thresholds: White > 2.0 Yellow > 10.0 Red > 20.0

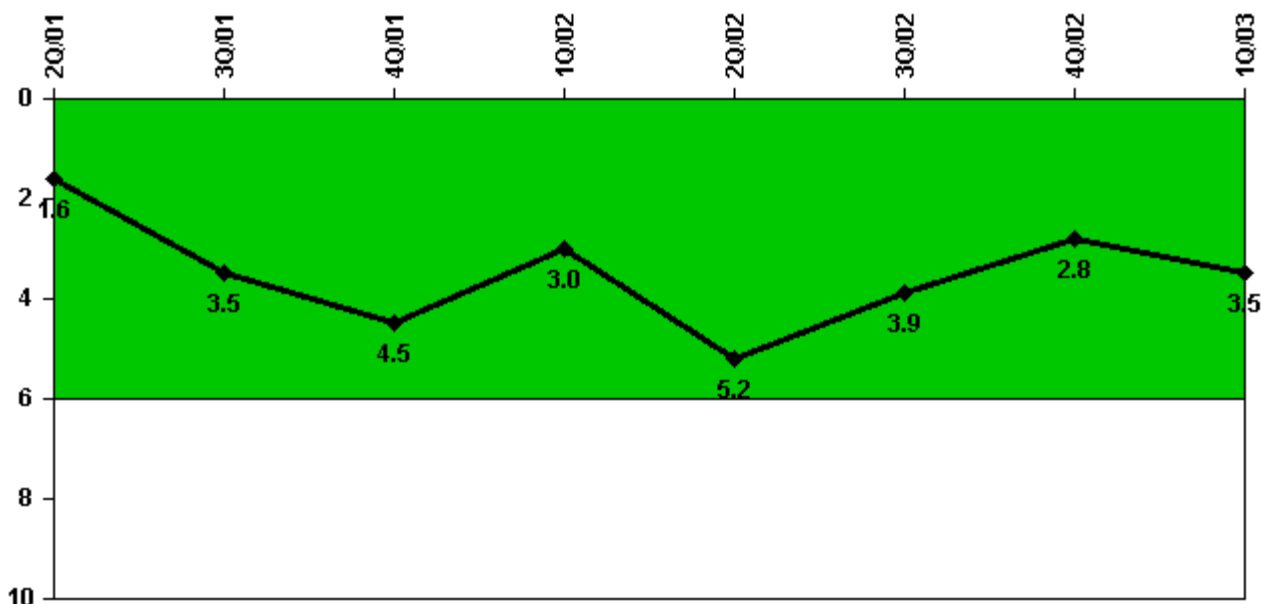
Notes

Scrams with Loss of Normal Heat Removal	2Q/01	3Q/01	4Q/01	1Q/02	2Q/02	3Q/02	4Q/02	1Q/03
Scrams	0	0	0	0	1.0	0	0	0
Indicator value	0	0	0	0	1.0	1.0	1.0	1.0

Licensee Comments:

1Q/03: Two frequently asked questions have been submitted to address three reactor scrams that the NRC resident inspector believes should be counted under this reporting criteria. Final resolution may result in the green/white performance indicator threshold being exceeded.

Unplanned Power Changes per 7000 Critical Hrs



Thresholds: White > 6.0

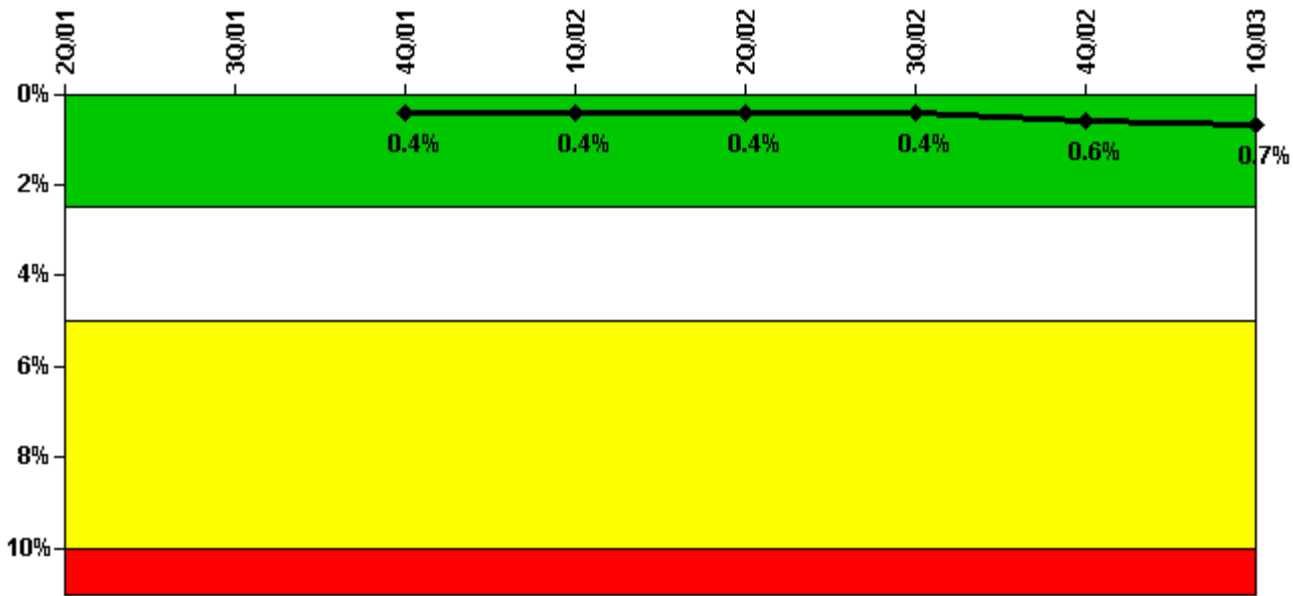
Notes

Unplanned Power Changes per 7000 Critical Hrs	2Q/01	3Q/01	4Q/01	1Q/02	2Q/02	3Q/02	4Q/02	1Q/03
Unplanned power changes	0	2.0	1.0	0	2.0	1.0	0	1.0
Critical hours	2183.0	1454.0	2008.0	1261.5	1965.5	2027.5	2209.0	1884.6
Indicator value	1.6	3.5	4.5	3.0	5.2	3.9	2.8	3.5

Licensee Comments:

1Q/03: CNP requested and received an NOED to facilitate the replacement of the West motor drive auxiliary feedwater pump motor which otherwise would have resulted in an unplanned power change.

Safety System Unavailability, Emergency AC Power



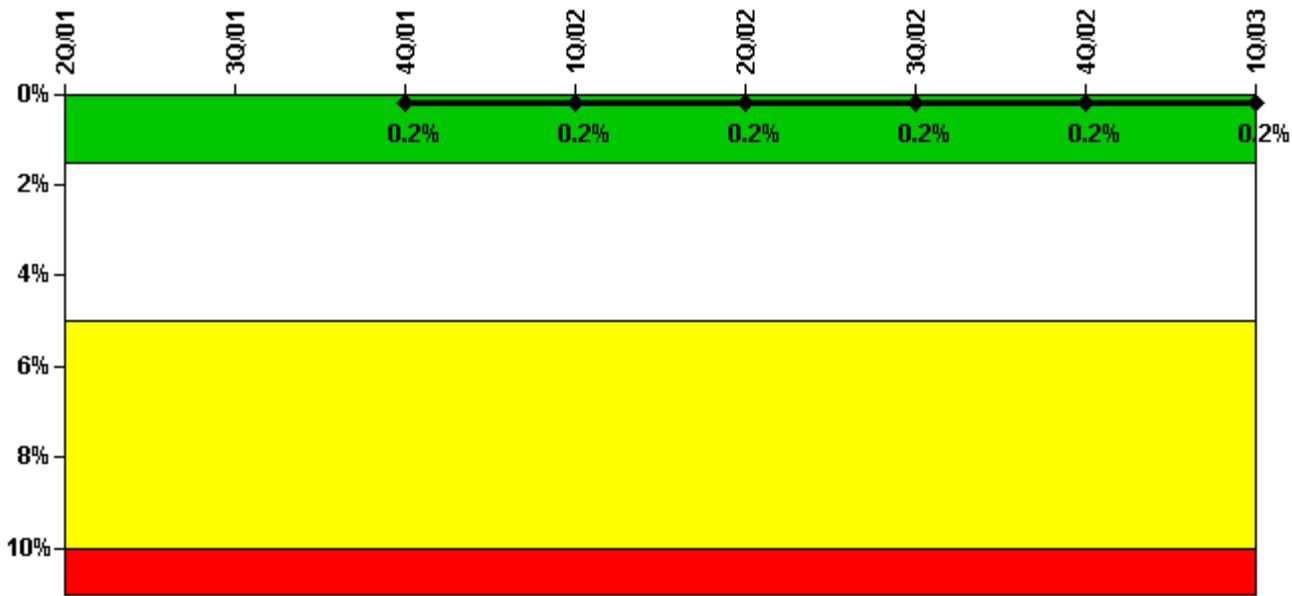
Thresholds: White > 2.5% Yellow > 5.0% Red > 10.0%

Notes

Safety System Unavailability, Emergency AC Power	2Q/01	3Q/01	4Q/01	1Q/02	2Q/02	3Q/02	4Q/02	1Q/03
Train 1								
Planned unavailable hours	5.20	0.30	1.20	5.38	11.33	0.70	0.70	33.52
Unplanned unavailable hours	0	0.90	0	0	0	0	81.80	49.10
Fault exposure hours	0	0	0	0	0	0	0	0
Effective Reset hours	0	0	0	0	0	0	0	0
Required hours	2183.00	2208.00	2209.00	1903.80	2183.00	2208.00	2209.00	2160.00
Train 2								
Planned unavailable hours	26.18	0.58	2.22	0.20	14.60	22.90	6.30	1.18
Unplanned unavailable hours	0	0.90	0	0	0	0	18.80	0
Fault exposure hours	0	0	0	0	0	0	0	0
Effective Reset hours	0	0	0	0	0	0	0	0
Required hours	2183.00	1524.50	2209.00	2064.00	2183.00	2208.00	2209.00	2160.00
Indicator value			0.4%	0.4%	0.4%	0.4%	0.6%	0.7%

Licensee Comments: none

Safety System Unavailability, High Pressure Injection System (HPSI)



Thresholds: White > 1.5% Yellow > 5.0% Red > 10.0%

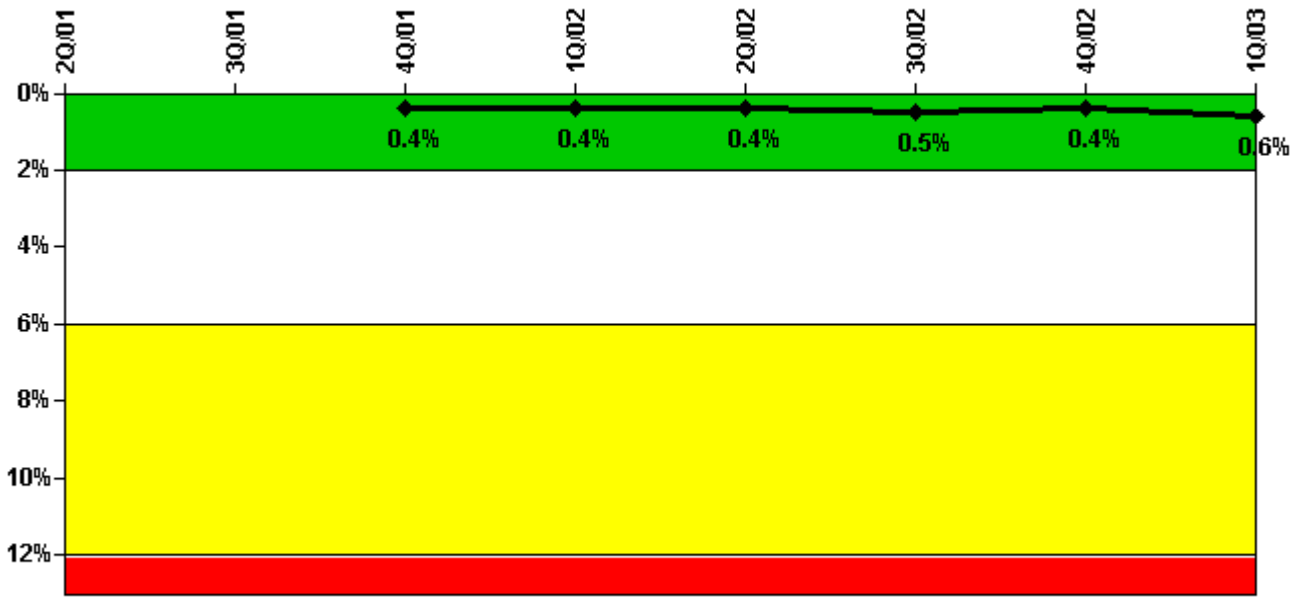
Notes

Safety System Unavailability, High Pressure Injection System (HPSI)	2Q/01	3Q/01	4Q/01	1Q/02	2Q/02	3Q/02	4Q/02	1Q/03
Train 1								
Planned unavailable hours	0	0	15.45	11.00	0	10.03	0	1.65
Unplanned unavailable hours	0	0	0	0	0	0	0	0
Fault exposure hours	0	0	0	0	0	0	0	0
Effective Reset hours	0	0	0	0	0	0	0	0
Required hours	2183.00	1524.47	2209.00	1389.76	2183.00	2118.98	2209.00	2160.00
Train 2								
Planned unavailable hours	0	20.92	0	1.87	0	11.82	0	1.35
Unplanned unavailable hours	0	0	0	0	0	0	0	0
Fault exposure hours	0	0	0	0	0	0	0	0
Effective Reset hours	0	0	0	0	0	0	0	0
Required hours	2183.00	1501.97	2209.00	1329.94	2183.00	2208.00	2209.00	2130.15
Train 3								
Planned unavailable hours	0	0	0	0	0	0	23.15	8.57
Unplanned unavailable hours	0	0	0	0	0	0	0	0
Fault exposure hours	0	0	0	0	0	0	0	0
Effective Reset hours	0	0	0	0	0	0	0	0
Required hours	2183.00	1524.47	2209.00	1389.76	2183.00	2118.98	2209.00	2130.15
Train 4								
Planned unavailable hours	5.57	0	12.48	0	5.95	0	0	1.23
Unplanned unavailable hours	0	0	0	0	0	18.77	0	0
Fault exposure hours	0	0	0	0	0	0	0	0
Effective Reset hours	0	0	0	0	0	0	0	0

Required hours	2183.00	1501.97	2209.00	1329.94	2183.00	2118.98	2209.00	2130.15
Indicator value			0.2%	0.2%	0.2%	0.2%	0.2%	0.2%

Licensee Comments: none

Safety System Unavailability, Heat Removal System (AFW)



Thresholds: White > 2.0% Yellow > 6.0% Red > 12.0%

Notes

Safety System Unavailability, Heat Removal System (AFW)	2Q/01	3Q/01	4Q/01	1Q/02	2Q/02	3Q/02	4Q/02	1Q/03
Train 1								
Planned unavailable hours	0	1.32	0	0	0	6.85	0	36.12
Unplanned unavailable hours	0	0	0	0	0	27.33	0	0
Fault exposure hours	0	0	0	0	0	0	0	0
Effective Reset hours	0	0	0	0	0	0	0	0
Required hours	2183.00	1579.05	2209.00	438.92	2183.00	2118.98	2209.00	2132.20
Train 2								
Planned unavailable hours	1.00	1.85	0	2.52	9.23	9.05	0	29.38
Unplanned unavailable hours	0	0	0	0	6.08	0	0	59.48
Fault exposure hours	0	0	0	0	0	0	0	0
Effective Reset hours	0	0	0	0	0	0	0	0
Required hours	2183.00	1579.05	2209.00	438.92	2183.00	2118.98	2209.00	2131.20
Train 3								

Planned unavailable hours	0	5.75	0	0	0	23.93	0	9.03
Unplanned unavailable hours	0	32.39	0	14.79	0	0	0	0
Fault exposure hours	0	0	0	0	0	0	0	0
Effective Reset hours	0	0	0	0	0	0	0	0
Required hours	2183.00	1579.05	2209.00	438.92	2183.00	2118.98	2209.00	2131.20
Indicator value			0.4%	0.4%	0.4%	0.5%	0.4%	0.6%

Licensee Comments: none

Safety System Unavailability, Residual Heat Removal System



Thresholds: White > 1.5% Yellow > 5.0% Red > 10.0%

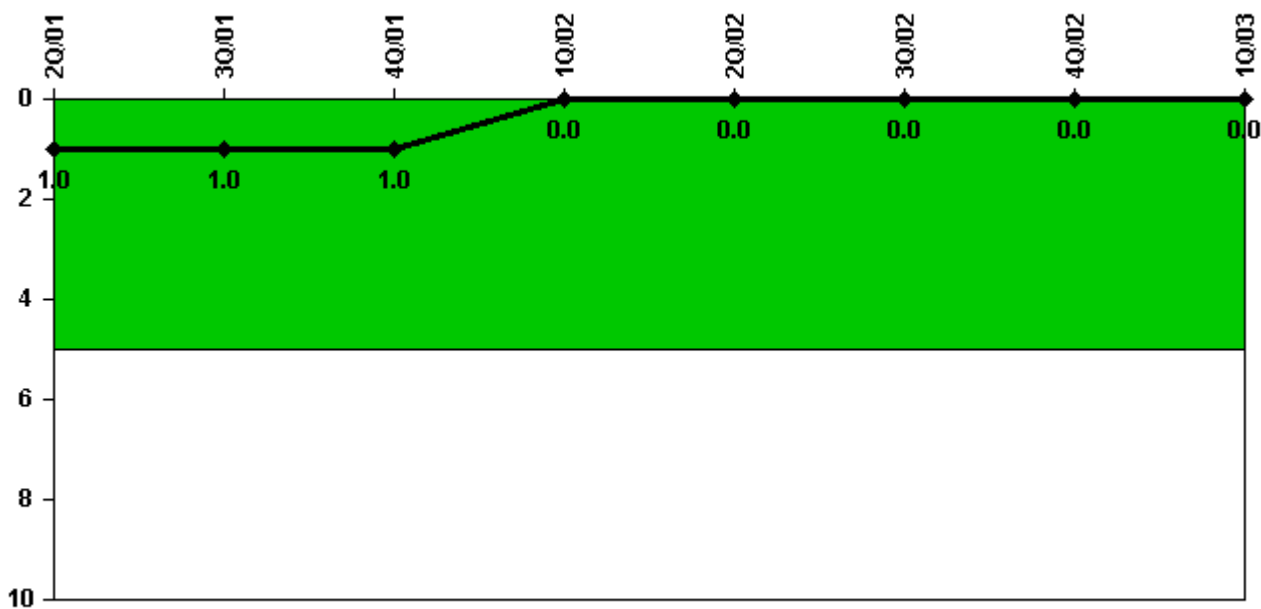
Notes

Safety System Unavailability, Residual Heat Removal System	2Q/01	3Q/01	4Q/01	1Q/02	2Q/02	3Q/02	4Q/02	1Q/03
Train 1								
Planned unavailable hours	0	11.78	0	15.62	0	8.77	8.05	0
Unplanned unavailable hours	0	0	0	0	0	0	0	0
Fault exposure hours	0	0	0	0	0	0	0	0
Effective Reset hours	0	0	0	0	0	0	0	0
Required hours	2183.00	2208.00	2209.00	1857.00	2183.00	2208.00	2209.00	2160.00
Train 2								
Planned unavailable hours	0	0	0	7.58	0	10.20	6.03	0
Unplanned unavailable hours	0	0	0	0	0	0	0	0

Fault exposure hours	0	0	0	0	0	0	0	0
Effective Reset hours	0	0	0	0	0	0	0	0
Required hours	2183.00	2208.00	2209.00	1857.00	2183.00	2208.00	2209.00	2160.00
Indicator value			0.1%	0.2%	0.2%	0.2%	0.2%	0.2%

Licensee Comments: none

Safety System Functional Failures (PWR)



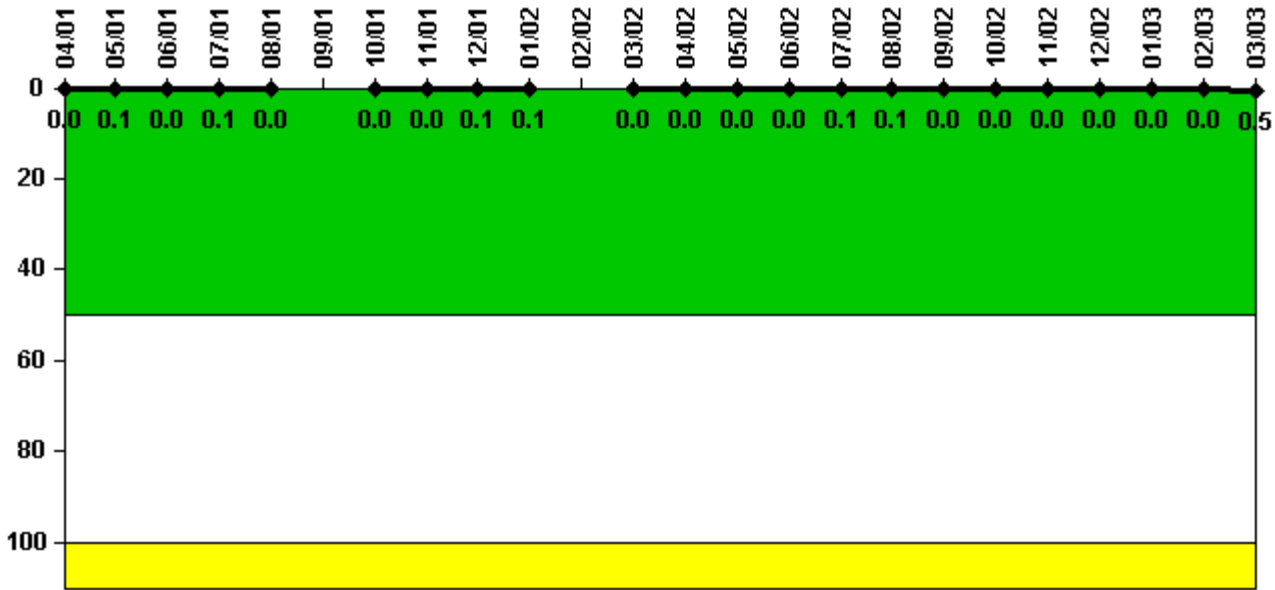
Thresholds: White > 5.0

Notes

Safety System Functional Failures (PWR)	2Q/01	3Q/01	4Q/01	1Q/02	2Q/02	3Q/02	4Q/02	1Q/03
Safety System Functional Failures	0	0	0	0	0	0	0	0
Indicator value	1	1	1	0	0	0	0	0

Licensee Comments: none

Reactor Coolant System Activity



Thresholds: White > 50.0 Yellow > 100.0

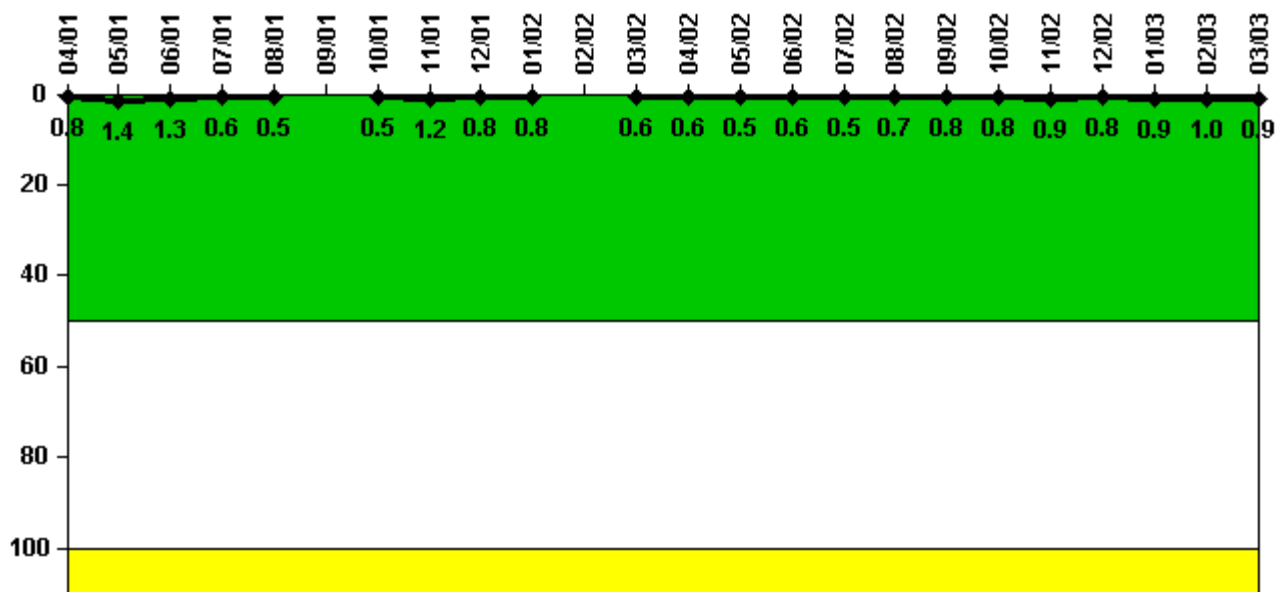
Notes

Reactor Coolant System Activity	4/01	5/01	6/01	7/01	8/01	9/01	10/01	11/01	12/01	1/02	2/02	3/02
Maximum activity	0.000407	0.000508	0.000452	0.000677	0.000474	N/A	0.000480	0.000497	0.000515	0.000509	N/A	0.000212
Technical specification limit	1.0	1.0	1.0	1.0	1.0	1.0	1.0	1.0	1.0	1.0	1.0	1.0
Indicator value	0	0.1	0	0.1	0	N/A	0	0	0.1	0.1	N/A	0

Reactor Coolant System Activity	4/02	5/02	6/02	7/02	8/02	9/02	10/02	11/02	12/02	1/03	2/03	3/03
Maximum activity	0.000242	0.000214	0.000238	0.001100	0.000641	0.000316	0.000359	0.000324	0.000313	0.000313	0.000368	0.004970
Technical specification limit	1.0	1.0	1.0	1.0	1.0	1.0	1.0	1.0	1.0	1.0	1.0	1.0
Indicator value	0	0	0	0.1	0.1	0	0	0	0	0	0	0.5

Licensee Comments: none

Reactor Coolant System Leakage



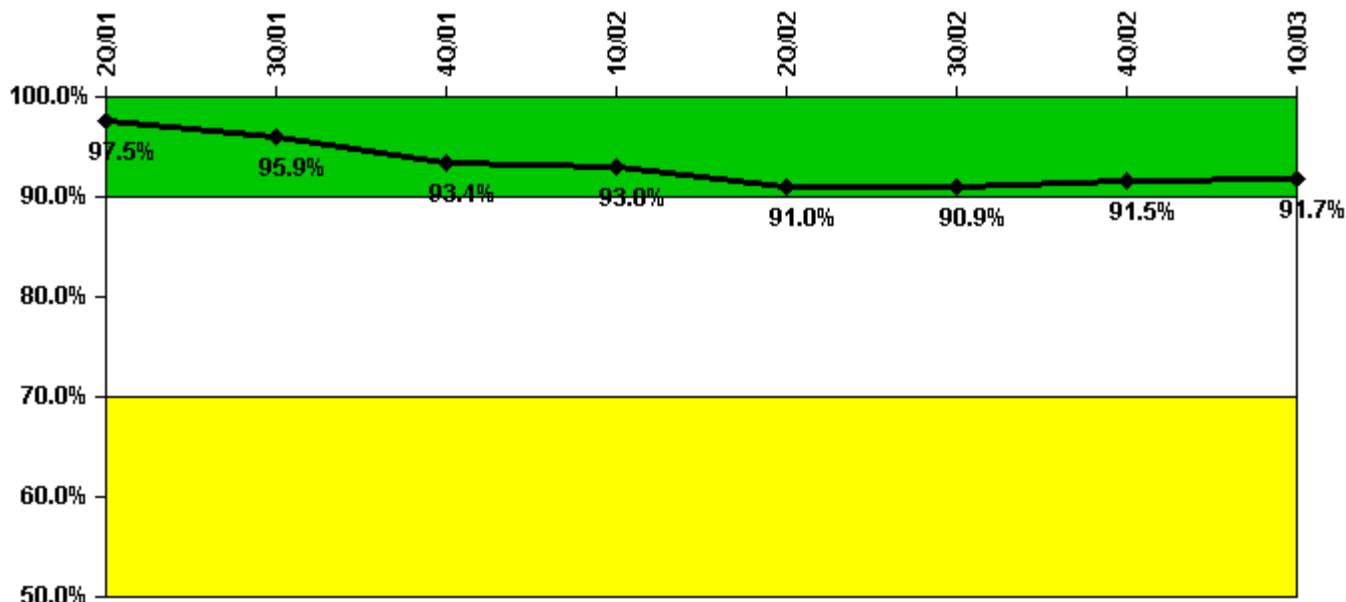
Thresholds: White > 50.0 Yellow > 100.0

Notes

Reactor Coolant System Leakage	4/01	5/01	6/01	7/01	8/01	9/01	10/01	11/01	12/01	1/02	2/02	3/02
Maximum leakage	0.090	0.150	0.140	0.070	0.050	N/A	0.050	0.130	0.090	0.085	N/A	0.068
Technical specification limit	11.0	11.0	11.0	11.0	11.0	11.0	11.0	11.0	11.0	11.0	11.0	11.0
Indicator value	0.8	1.4	1.3	0.6	0.5	N/A	0.5	1.2	0.8	0.8	N/A	0.6
Reactor Coolant System Leakage	4/02	5/02	6/02	7/02	8/02	9/02	10/02	11/02	12/02	1/03	2/03	3/03
Maximum leakage	0.071	0.057	0.064	0.058	0.080	0.086	0.090	0.100	0.090	0.096	0.110	0.097
Technical specification limit	11.0	11.0	11.0	11.0	11.0	11.0	11.0	11.0	11.0	11.0	11.0	11.0
Indicator value	0.6	0.5	0.6	0.5	0.7	0.8	0.8	0.9	0.8	0.9	1.0	0.9

Licensee Comments: none

Drill/Exercise Performance



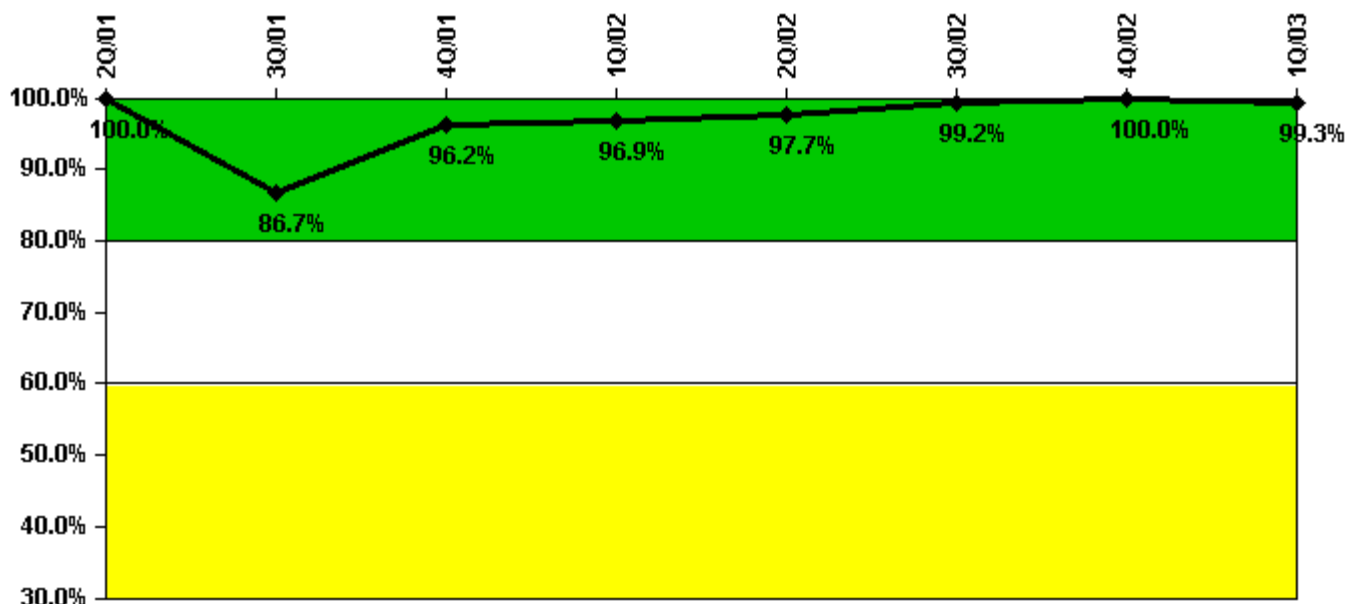
Thresholds: White < 90.0% Yellow < 70.0%

Notes

Drill/Exercise Performance	2Q/01	3Q/01	4Q/01	1Q/02	2Q/02	3Q/02	4Q/02	1Q/03
Successful opportunities	35.0	69.0	90.0	43.0	24.0	140.0	149.0	92.0
Total opportunities	36.0	76.0	104.0	46.0	34.0	150.0	159.0	95.0
Indicator value	97.5%	95.9%	93.4%	93.0%	91.0%	90.9%	91.5%	91.7%

Licensee Comments: none

ERO Drill Participation



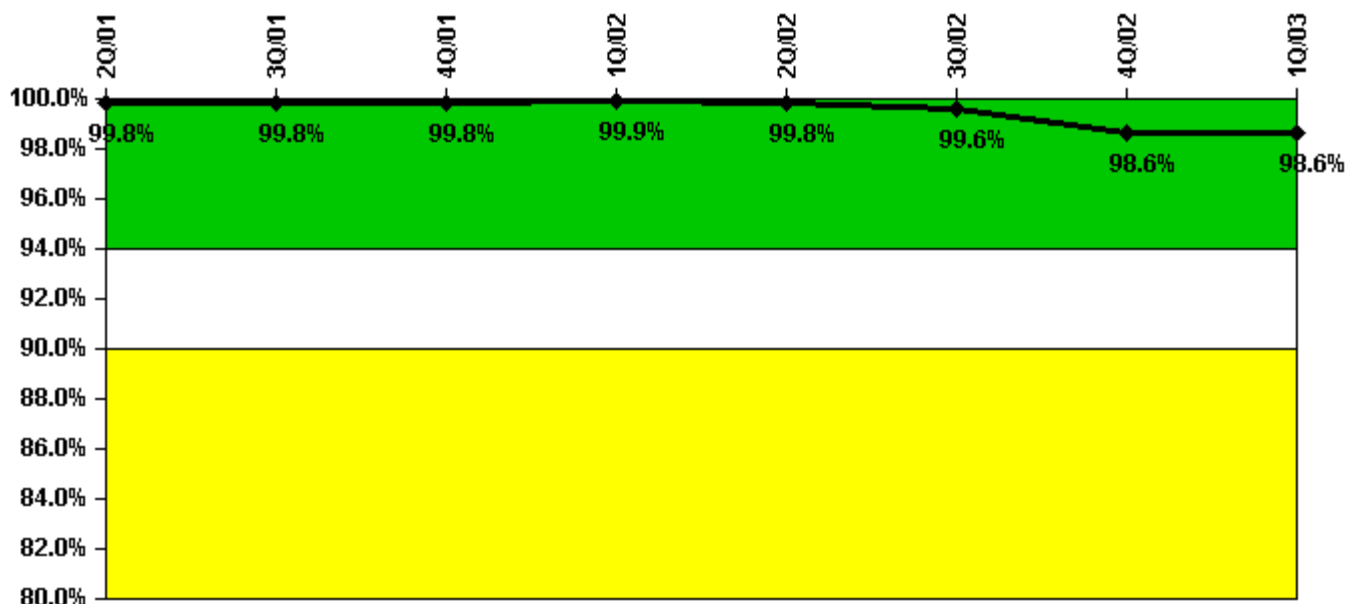
Thresholds: White < 80.0% Yellow < 60.0%

Notes

ERO Drill Participation	2Q/01	3Q/01	4Q/01	1Q/02	2Q/02	3Q/02	4Q/02	1Q/03
Participating Key personnel	55.0	111.0	125.0	127.0	125.0	130.0	131.0	151.0
Total Key personnel	55.0	128.0	130.0	131.0	128.0	131.0	131.0	152.0
Indicator value	100.0%	86.7%	96.2%	96.9%	97.7%	99.2%	100.0%	99.3%

Licensee Comments: none

Alert & Notification System



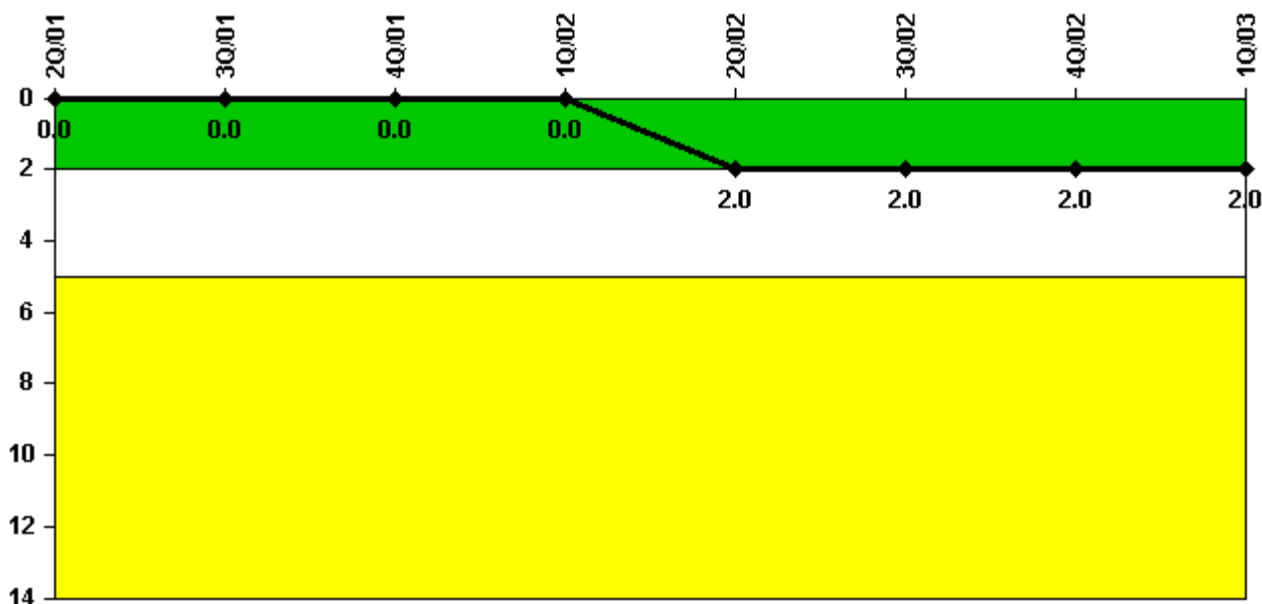
Thresholds: White < 94.0% Yellow < 90.0%

Notes

Alert & Notification System	2Q/01	3Q/01	4Q/01	1Q/02	2Q/02	3Q/02	4Q/02	1Q/03
Successful siren-tests	210	210	209	210	209	209	200	210
Total sirens-tests	210	210	210	210	210	210	210	210
Indicator value	99.8%	99.8%	99.8%	99.9%	99.8%	99.6%	98.6%	98.6%

Licensee Comments: none

Occupational Exposure Control Effectiveness



Thresholds: White > 2.0 Yellow > 5.0

Notes

Occupational Exposure Control Effectiveness	2Q/01	3Q/01	4Q/01	1Q/02	2Q/02	3Q/02	4Q/02	1Q/03
High radiation area occurrences	0	0	0	0	2	0	0	0
Very high radiation area occurrences	0	0	0	0	0	0	0	0
Unintended exposure occurrences	0	0	0	0	0	0	0	0
Indicator value	0	0	0	0	2	2	2	2

Licensee Comments:

1Q/03: CNP has submitted an FAQ to seek clarification of an occurrence that had been previously counted against this indicator in 2Q2002.

RETS/ODCM Radiological Effluent



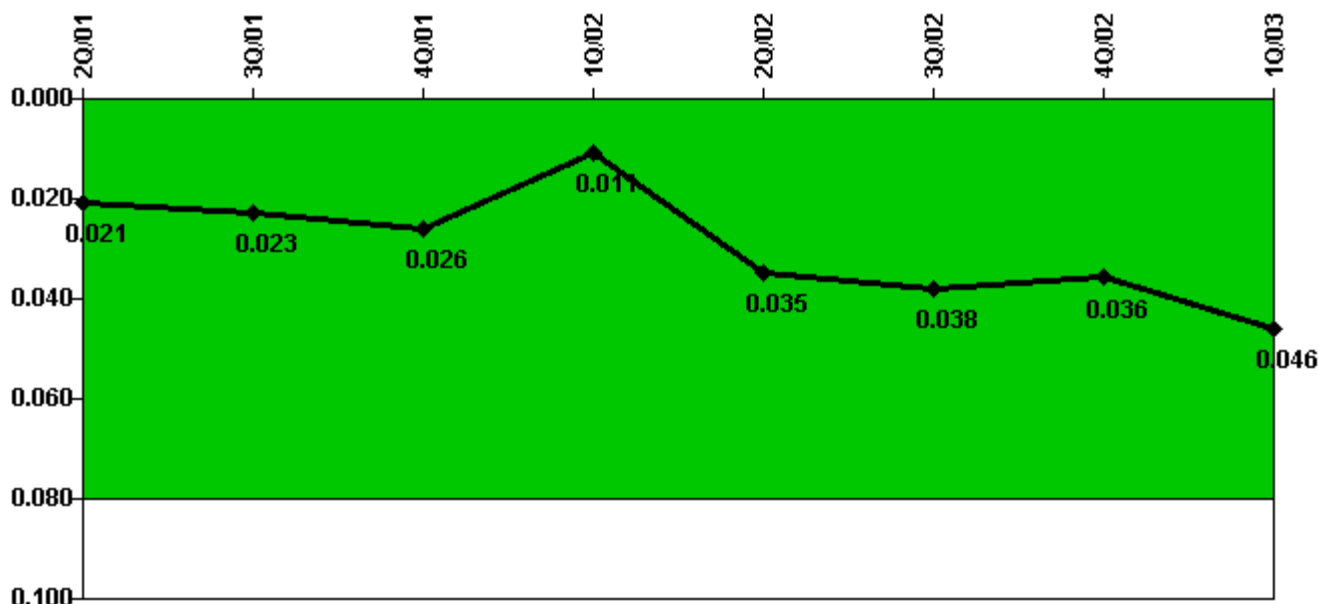
Thresholds: White > 1.0 Yellow > 3.0

Notes

RETS/ODCM Radiological Effluent	2Q/01	3Q/01	4Q/01	1Q/02	2Q/02	3Q/02	4Q/02	1Q/03
RETS/ODCM occurrences	0	0	0	0	0	0	0	0
Indicator value	0	0	0	0	0	0	0	0

Licensee Comments: none

Protected Area Security Performance Index



Thresholds: White > 0.080

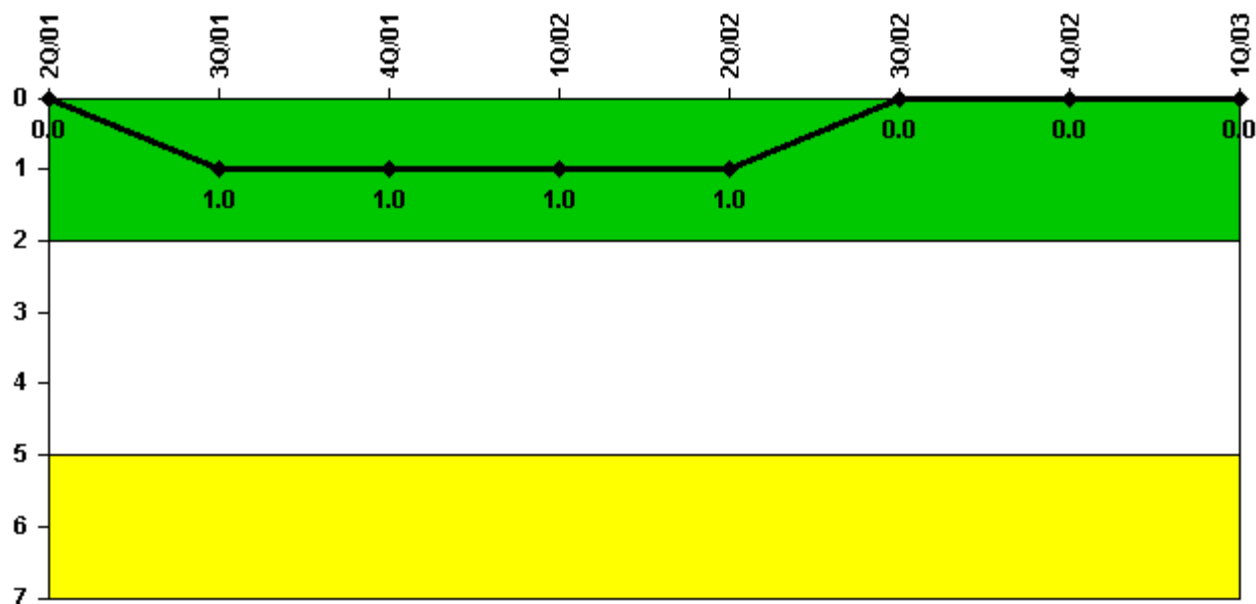
Notes

Protected Area Security Performance Index	2Q/01	3Q/01	4Q/01	1Q/02	2Q/02	3Q/02	4Q/02	1Q/03
IDS compensatory hours	97.80	49.50	103.70	28.20	680.50	111.70	52.10	263.40
CCTV compensatory hours	0.3	0	0	0	0	0	4.4	16.2
IDS normalization factor	1.40	1.40	1.40	1.40	1.40	1.40	1.40	1.40
CCTV normalization factor	1.0	1.0	1.0	1.0	1.0	1.0	1.0	1.0
Index Value	0.021	0.023	0.026	0.011	0.035	0.038	0.036	0.046

Licensee Comments:

1Q/03: In accordance With NEI 99-02, compensatory hours associated with scheduled equipment upgrades that are being performed and those compensatory hours for configuration issues associated with the equipment upgrades are excluded.

Personnel Screening Program



Thresholds: White > 2.0 Yellow > 5.0

Notes

Personnel Screening Program	2Q/01	3Q/01	4Q/01	1Q/02	2Q/02	3Q/02	4Q/02	1Q/03
Program failures	0	1	0	0	0	0	0	0
Indicator value	0	1	1	1	1	0	0	0

Licensee Comments: none

FFD/Personnel Reliability



Thresholds: White > 2.0 Yellow > 5.0

Notes

FFD/Personnel Reliability	2Q/01	3Q/01	4Q/01	1Q/02	2Q/02	3Q/02	4Q/02	1Q/03
Program Failures	0	0	0	0	0	0	0	0
Indicator value	0	0	0	0	0	0	0	0

Licensee Comments: none

▲ [PI Summary](#) | [Inspection Findings Summary](#) | [Reactor Oversight Process](#)

Last Modified: April 22, 2003