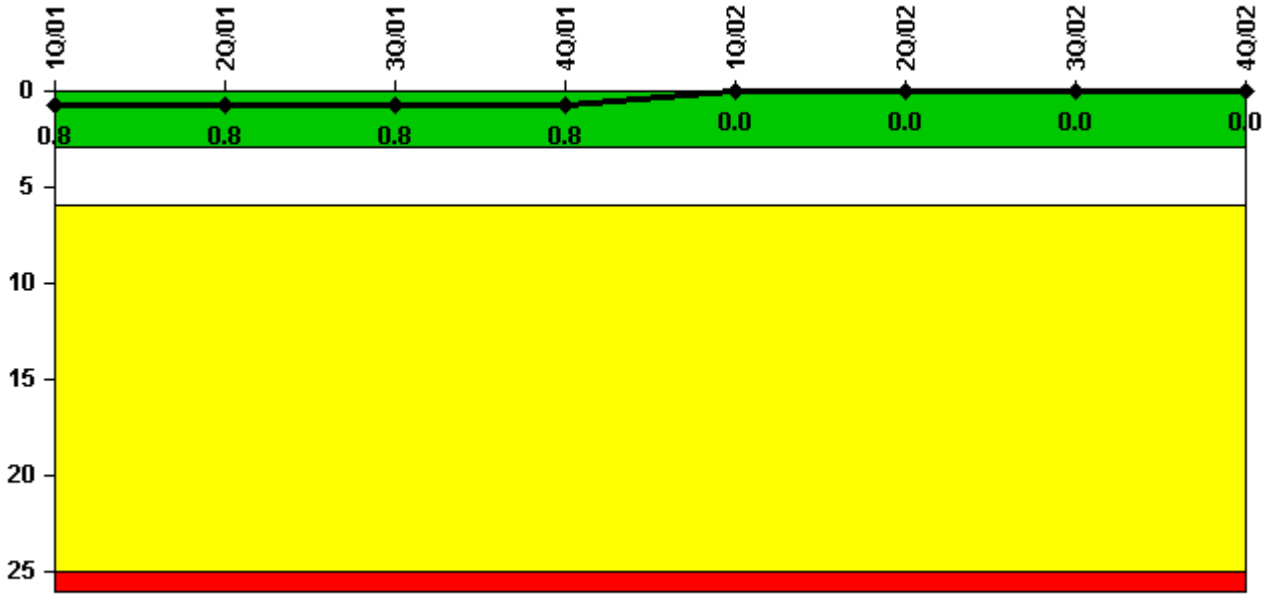


# La Salle 1

## 4Q/2002 Performance Indicators

Licensee's General Comments: none

### Unplanned Scrams per 7000 Critical Hrs



Thresholds: White > 3.0 Yellow > 6.0 Red > 25.0

### Notes

Unplanned Scrams per 7000 Critical Hrs	1Q/01	2Q/01	3Q/01	4Q/01	1Q/02	2Q/02	3Q/02	4Q/02
Unplanned scrams	1.0	0	0	0	0	0	0	0
Critical hours	2123.4	2183.0	2208.0	2209.0	1585.9	1994.3	2208.0	2209.0
Indicator value	0.8	0.8	0.8	0.8	0	0	0	0

Licensee Comments: none

### Scrams with Loss of Normal Heat Removal



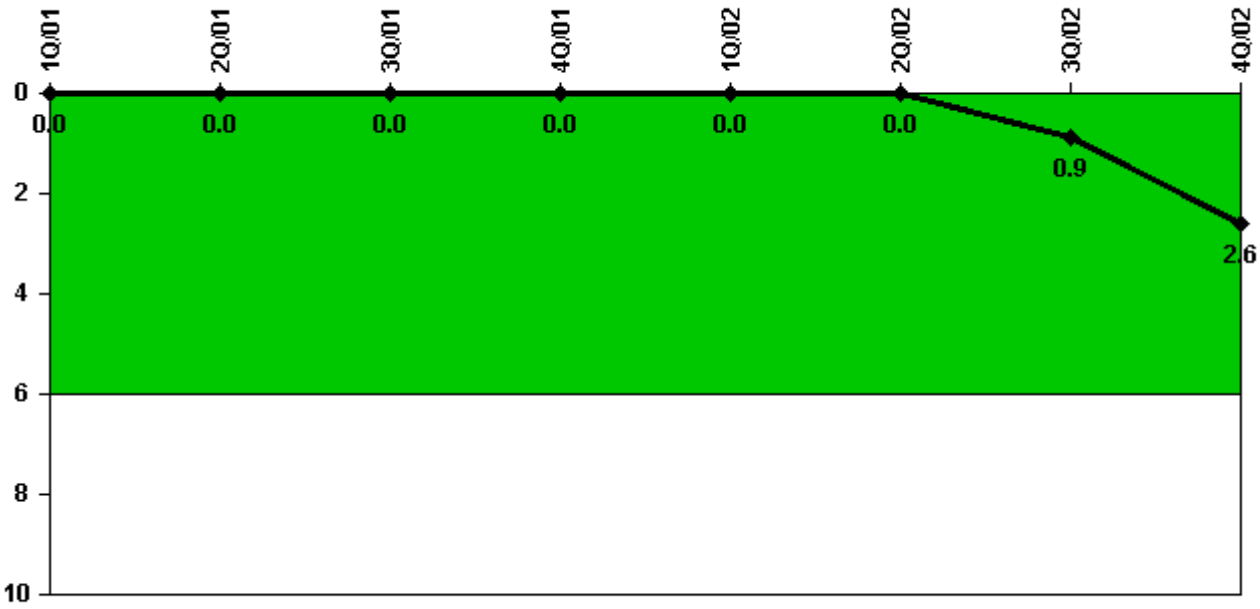
Thresholds: White > 2.0 Yellow > 10.0 Red > 20.0

#### Notes

Scrams with Loss of Normal Heat Removal	1Q/01	2Q/01	3Q/01	4Q/01	1Q/02	2Q/02	3Q/02	4Q/02
Scrams	0	0	0	0	0	0	0	0
Indicator value	0	0	0	0	0	0	0	0

Licensee Comments: none

### Unplanned Power Changes per 7000 Critical Hrs



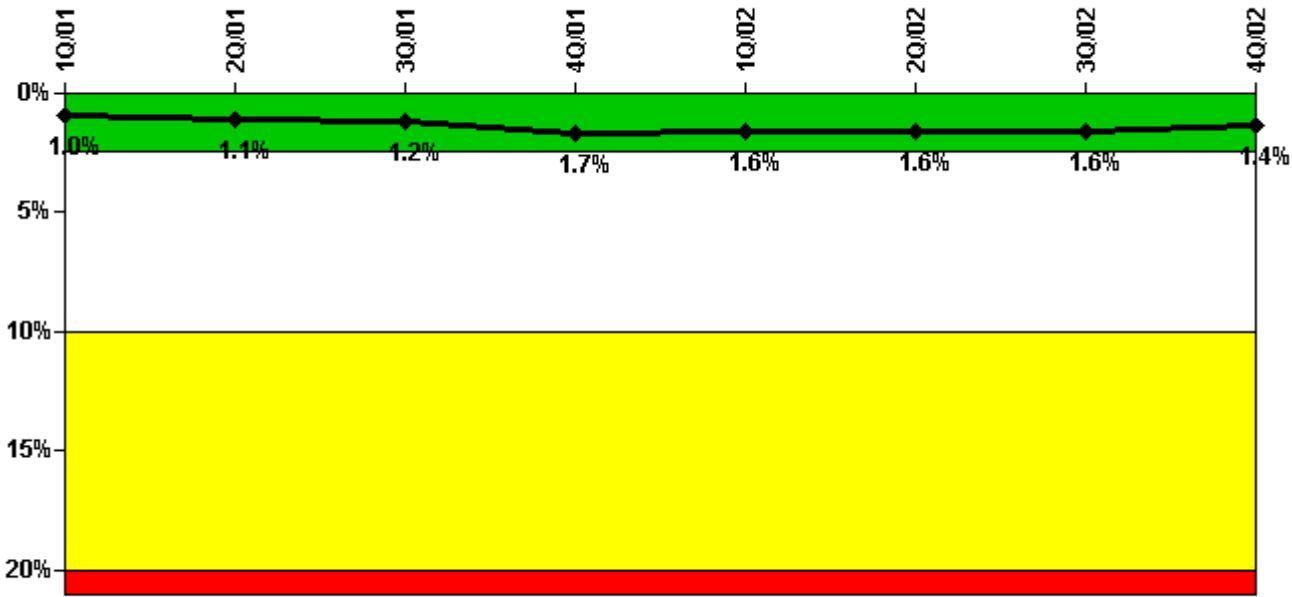
Thresholds: White > 6.0

#### Notes

Unplanned Power Changes per 7000 Critical Hrs	1Q/01	2Q/01	3Q/01	4Q/01	1Q/02	2Q/02	3Q/02	4Q/02
Unplanned power changes	0	0	0	0	0	0	1.0	2.0
Critical hours	2123.4	2183.0	2208.0	2209.0	1585.9	1994.3	2208.0	2209.0
Indicator value	0	0	0	0	0	0	0.9	2.6

Licensee Comments: none

### Safety System Unavailability, Emergency AC Power, >2EDG



Thresholds: White > 2.5% Yellow > 10.0% Red > 20.0%

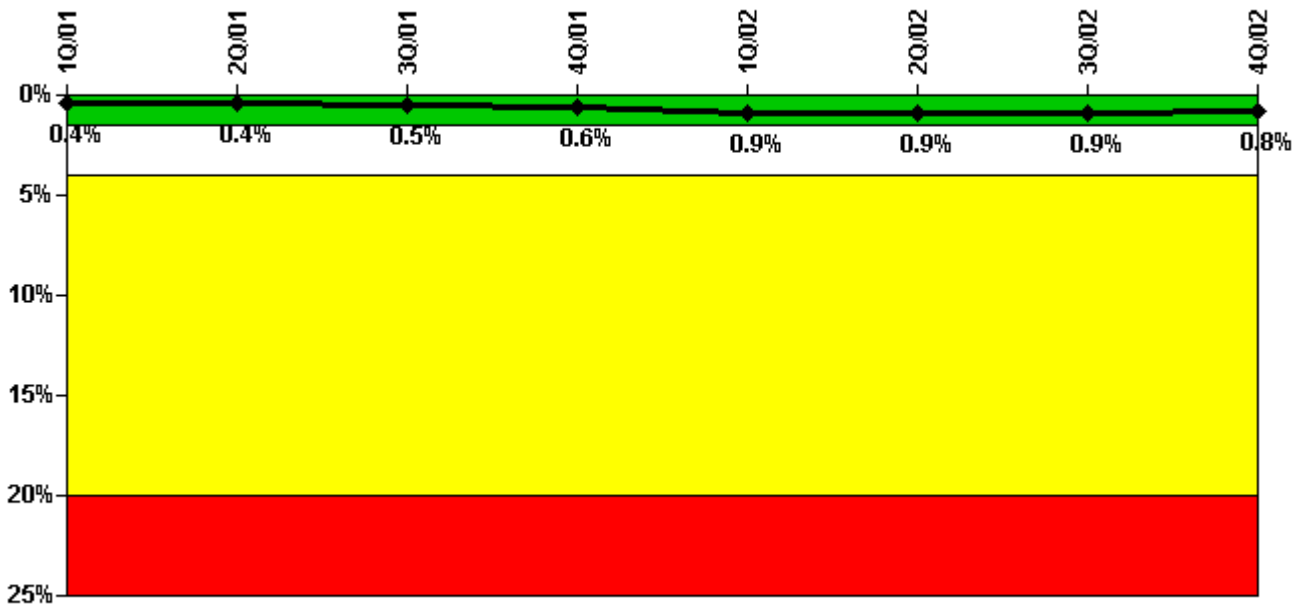
#### Notes

Safety System Unavailability, Emergency AC Power, >2EDG	1Q/01	2Q/01	3Q/01	4Q/01	1Q/02	2Q/02	3Q/02	4Q/02
<b>Train 1</b>								
Planned unavailable hours	26.20	0.75	0.85	61.00	0.50	6.95	82.40	1.13
Unplanned unavailable hours	23.43	0	0	0	0	0	28.00	0
Fault exposure hours	0	0	0	336.00	0	0	0	0
Effective Reset hours	0	0	0	0	0	0	0	0
Required hours	2160.00	2183.00	2208.00	2209.00	2160.00	2183.00	2208.00	2209.00
<b>Train 2</b>								
Planned unavailable hours	30.63	0.75	1.25	24.05	0.75	72.72	1.00	1.00
Unplanned unavailable hours	0	0	0	13.40	0	0	0	0
Fault exposure hours	0	0	0	0	0	0	0	0
Effective Reset hours	0	0	0	0	0	0	0	0
Required hours	2160.00	2183.00	2208.00	2209.00	2160.00	2183.00	2208.00	2209.00
<b>Train 3</b>								
Planned unavailable hours	35.55	29.52	54.98	2.13	11.17	1.25	0.75	0.98
Unplanned unavailable hours	0	0	22.27	0	0	0	0	0
Fault exposure hours	0	0	0	0	0	0	0	0
Effective Reset hours	0	0	0	0	0	0	0	0
Required hours	2160.00	2183.00	2208.00	2209.00	2160.00	2183.00	2208.00	2209.00
<b>Indicator value</b>	<b>1.0%</b>	<b>1.1%</b>	<b>1.2%</b>	<b>1.7%</b>	<b>1.6%</b>	<b>1.6%</b>	<b>1.6%</b>	<b>1.4%</b>

Licensee Comments:

4Q/02: EDG Train 2 Potential 26,304 hours of T/2 fault exposure hours discovered in November 2002, due to inoperable room coolers. Issue is under review.

### Safety System Unavailability, High Pressure Injection System (HPCS)



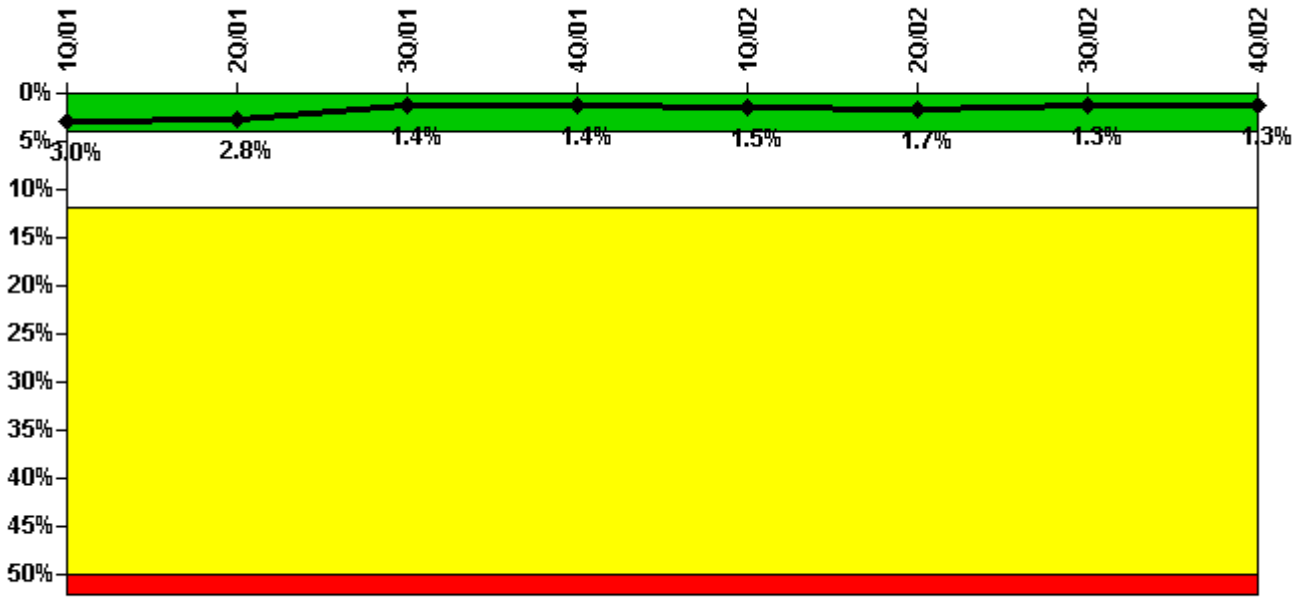
Thresholds: White > 1.5% Yellow > 4.0% Red > 20.0%

#### Notes

Safety System Unavailability, High Pressure Injection System (HPCS)	1Q/01	2Q/01	3Q/01	4Q/01	1Q/02	2Q/02	3Q/02	4Q/02
Train 1								
Planned unavailable hours	19.40	23.60	24.50	28.33	78.75	0	0	0
Unplanned unavailable hours	0	0	0	0	0	0	0	0.60
Fault exposure hours	0	0	0	0	0	0	0	0
Effective Reset hours	0	0	0	0	0	0	0	0
Required hours	2123.40	2183.00	2208.00	2209.00	1585.90	1991.80	2208.00	2209.00
Indicator value	0.4%	0.4%	0.5%	0.6%	0.9%	0.9%	0.9%	0.8%

Licensee Comments: none

### Safety System Unavailability, Heat Removal System (RCIC)



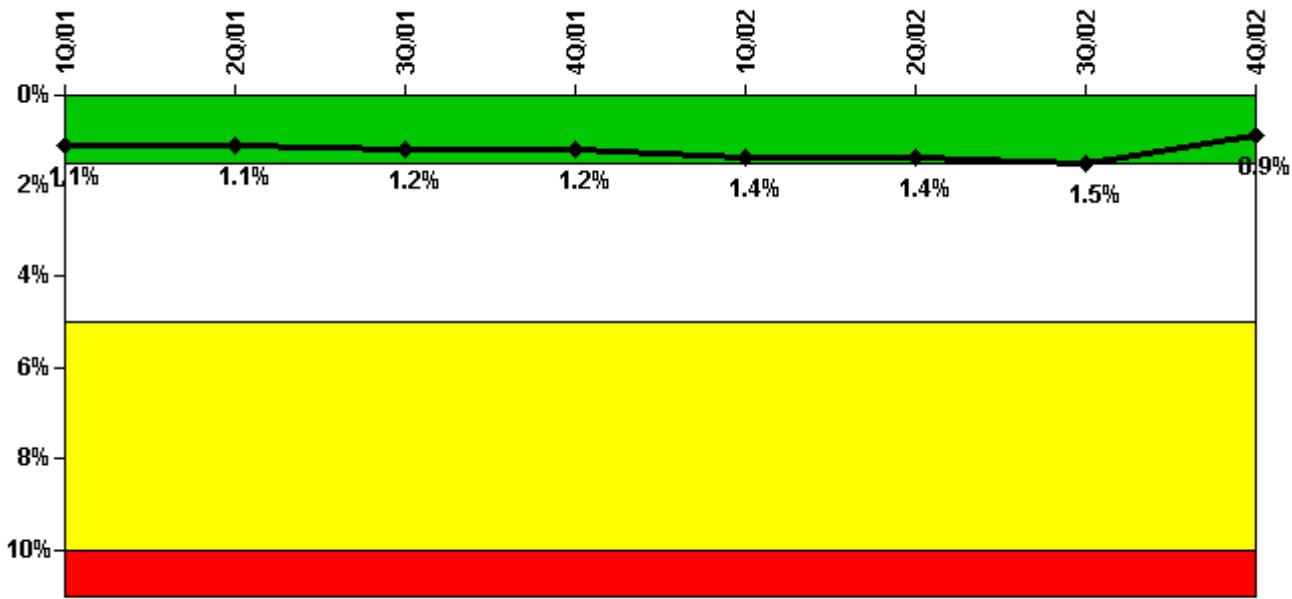
Thresholds: White > 4.0% Yellow > 12.0% Red > 50.0%

#### Notes

Safety System Unavailability, Heat Removal System (RCIC)	1Q/01	2Q/01	3Q/01	4Q/01	1Q/02	2Q/02	3Q/02	4Q/02
Train 1								
Planned unavailable hours	32.30	11.60	1.90	59.30	23.90	33.70	4.80	15.90
Unplanned unavailable hours	0	0	0	0	0	0	0	0.40
Fault exposure hours	0	0	0	0	0	0	0	0
Effective Reset hours	0	0	0	0	0	0	0	0
Required hours	2123.40	2183.00	2208.00	2209.00	1585.90	1991.80	2208.00	2209.00
Indicator value	3.0%	2.8%	1.4%	1.4%	1.5%	1.7%	1.3%	1.3%

Licensee Comments: none

### Safety System Unavailability, Residual Heat Removal System



Thresholds: White > 1.5% Yellow > 5.0% Red > 10.0%

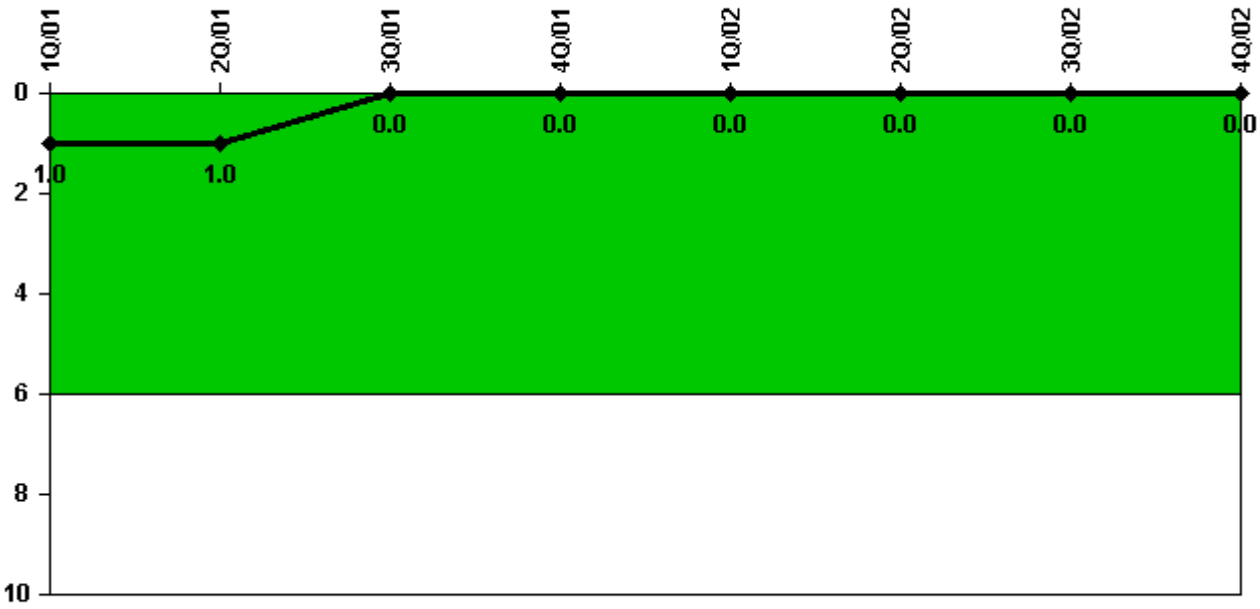
#### Notes

Safety System Unavailability, Residual Heat Removal System	1Q/01	2Q/01	3Q/01	4Q/01	1Q/02	2Q/02	3Q/02	4Q/02
<b>Train 1</b>								
Planned unavailable hours	41.40	0	0	8.50	0	2.30	42.00	11.40
Unplanned unavailable hours	30.70	0	0	0	0	0	20.10	0.30
Fault exposure hours	0	0	0	0	0	0	0	0
Effective Reset hours	0	0	0	0	0	0	0	0
Required hours	2160.00	2183.00	2208.00	2209.00	2160.00	2183.00	2208.00	2209.00
<b>Train 2</b>								
Planned unavailable hours	20.80	0	24.30	9.90	98.50	9.40	16.80	0
Unplanned unavailable hours	0	0	5.90	12.80	0	0	0	1.10
Fault exposure hours	0	0	0	0	0	0	0	0
Effective Reset hours	0	0	0	0	0	0	0	0
Required hours	2160.00	2183.00	2208.00	2209.00	2160.00	2183.00	2208.00	2209.00
<b>Indicator value</b>	1.1%	1.1%	1.2%	1.2%	1.4%	1.4%	1.5%	0.9%

Licensee Comments:

4Q/02: RHR Train 2 Potential 26,304 hours of T/2 fault exposure hours discovered in November 2002, due to inoperable room coolers. Issue is under review.

### Safety System Functional Failures (BWR)



Thresholds: White > 6.0

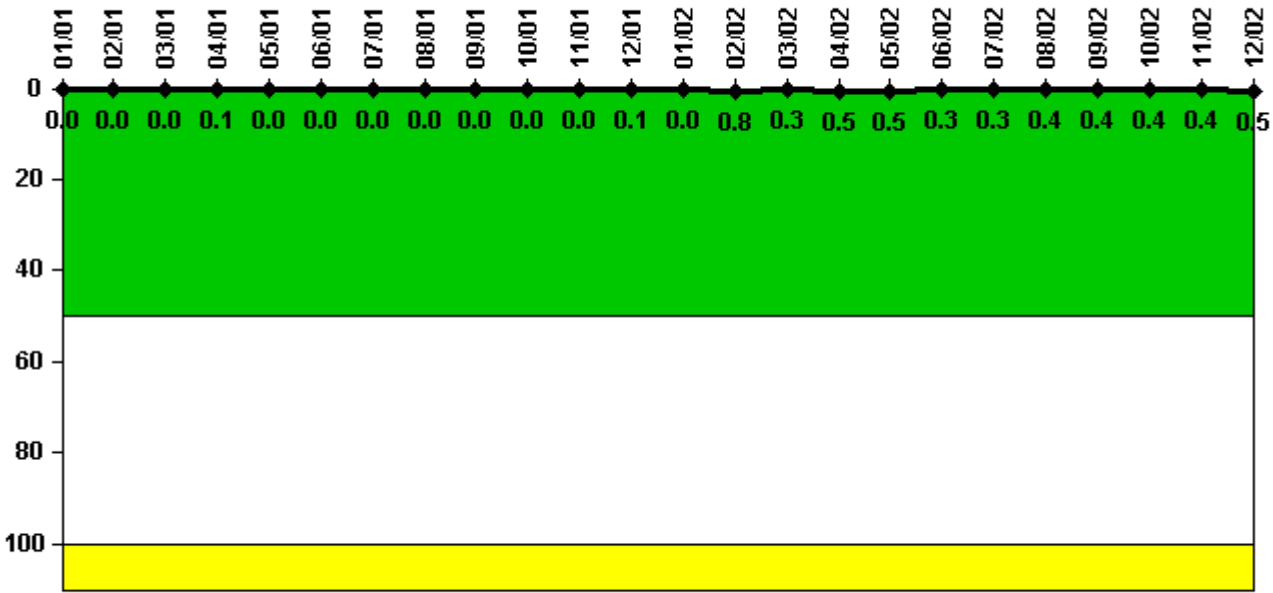
#### Notes

Safety System Functional Failures (BWR)	1Q/01	2Q/01	3Q/01	4Q/01	1Q/02	2Q/02	3Q/02	4Q/02
Safety System Functional Failures	0	0	0	0	0	0	0	0
Indicator value	1	1	0	0	0	0	0	0

Licensee Comments: none



### Reactor Coolant System Activity



Thresholds: White > 50.0 Yellow > 100.0

#### Notes

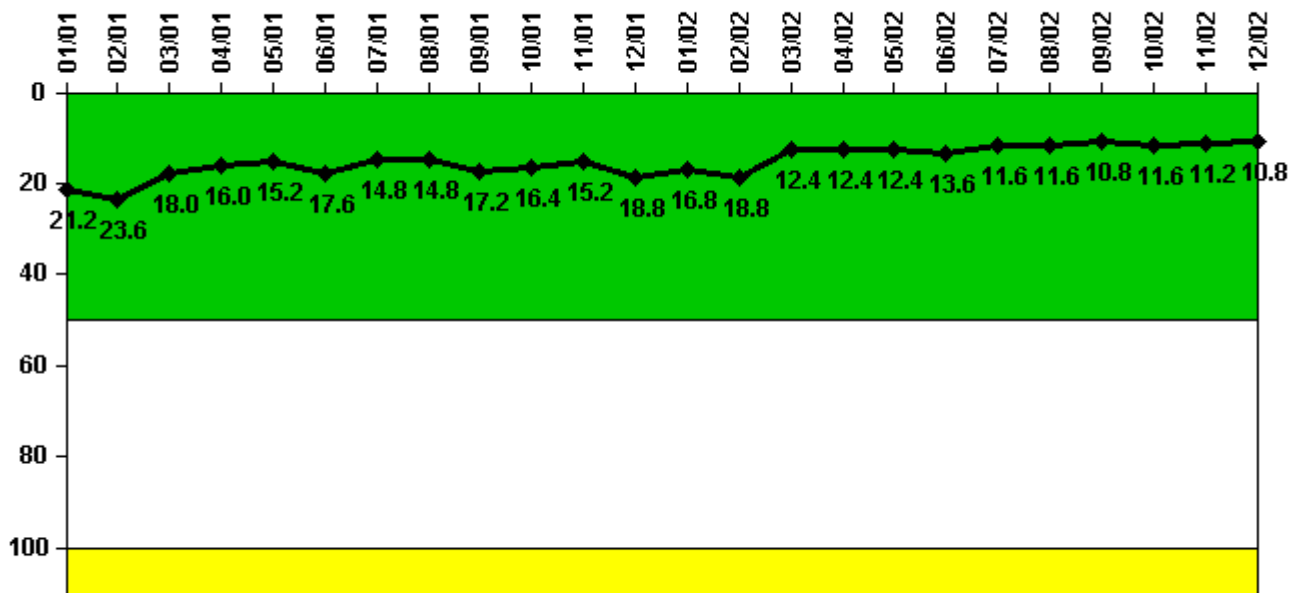
Reactor Coolant System Activity	1/01	2/01	3/01	4/01	5/01	6/01	7/01	8/01	9/01	10/01	11/01	12/01
Maximum activity	0.000087	0.000086	0.000095	0.000110	0.000096	0.000096	0.000069	0.000075	0.000076	0.000089	0.000087	0.000110
Technical specification limit	0.2	0.2	0.2	0.2	0.2	0.2	0.2	0.2	0.2	0.2	0.2	0.2
Indicator value	0	0	0	0.1	0	0	0	0	0	0	0	0.1

Reactor Coolant System Activity	1/02	2/02	3/02	4/02	5/02	6/02	7/02	8/02	9/02	10/02	11/02	12/02
Maximum activity	0.000093	0.001690	0.000678	0.001090	0.001090	0.000678	0.000685	0.000764	0.000771	0.000804	0.000800	0.000912
Technical specification limit	0.2	0.2	0.2	0.2	0.2	0.2	0.2	0.2	0.2	0.2	0.2	0.2
Indicator value	0	0.8	0.3	0.5	0.5	0.3	0.3	0.4	0.4	0.4	0.4	0.5

Licensee Comments: none

### Reactor Coolant System Leakage



Thresholds: White > 50.0 Yellow > 100.0

#### Notes

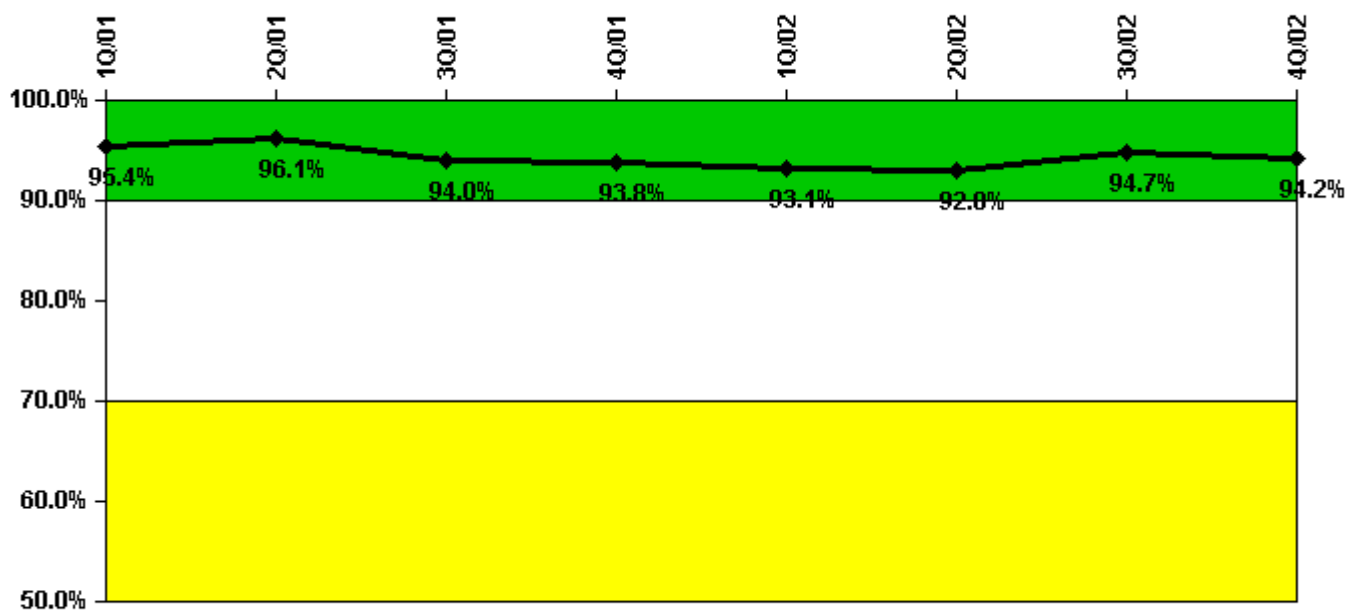
Reactor Coolant System Leakage	1/01	2/01	3/01	4/01	5/01	6/01	7/01	8/01	9/01	10/01	11/01	12/01
Maximum leakage	5.300	5.900	4.500	4.000	3.800	4.400	3.700	3.700	4.300	4.100	3.800	4.700
Technical specification limit	25.0	25.0	25.0	25.0	25.0	25.0	25.0	25.0	25.0	25.0	25.0	25.0
Indicator value	21.2	23.6	18.0	16.0	15.2	17.6	14.8	14.8	17.2	16.4	15.2	18.8

Reactor Coolant System Leakage	1/02	2/02	3/02	4/02	5/02	6/02	7/02	8/02	9/02	10/02	11/02	12/02
Maximum leakage	4.200	4.700	3.100	3.100	3.100	3.400	2.900	2.900	2.700	2.900	2.800	2.700
Technical specification limit	25.0	25.0	25.0	25.0	25.0	25.0	25.0	25.0	25.0	25.0	25.0	25.0
Indicator value	16.8	18.8	12.4	12.4	12.4	13.6	11.6	11.6	10.8	11.6	11.2	10.8

Licensee Comments: none

### Drill/Exercise Performance



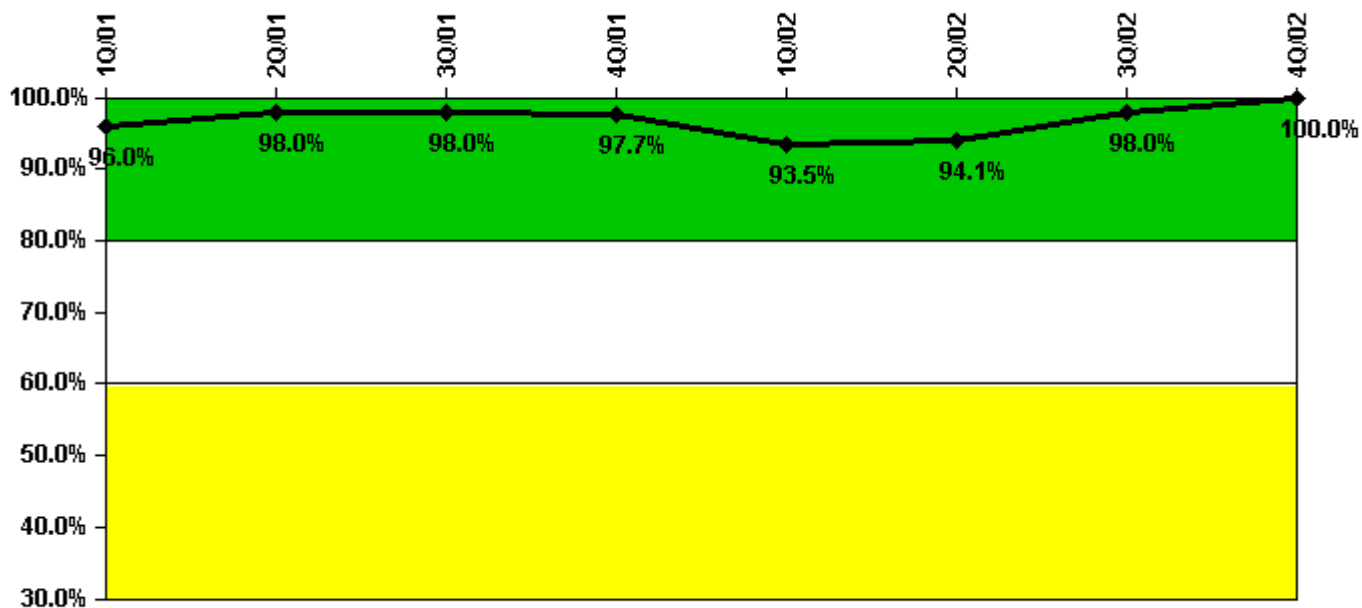
Thresholds: White < 90.0% Yellow < 70.0%

### Notes

Drill/Exercise Performance	1Q/01	2Q/01	3Q/01	4Q/01	1Q/02	2Q/02	3Q/02	4Q/02
Successful opportunities	20.0	11.0	30.0	9.0	18.0	11.0	47.0	17.0
Total opportunities	20.0	11.0	34.0	10.0	20.0	12.0	48.0	18.0
Indicator value	95.4%	96.1%	94.0%	93.8%	93.1%	92.8%	94.7%	94.2%

Licensee Comments: none

### ERO Drill Participation



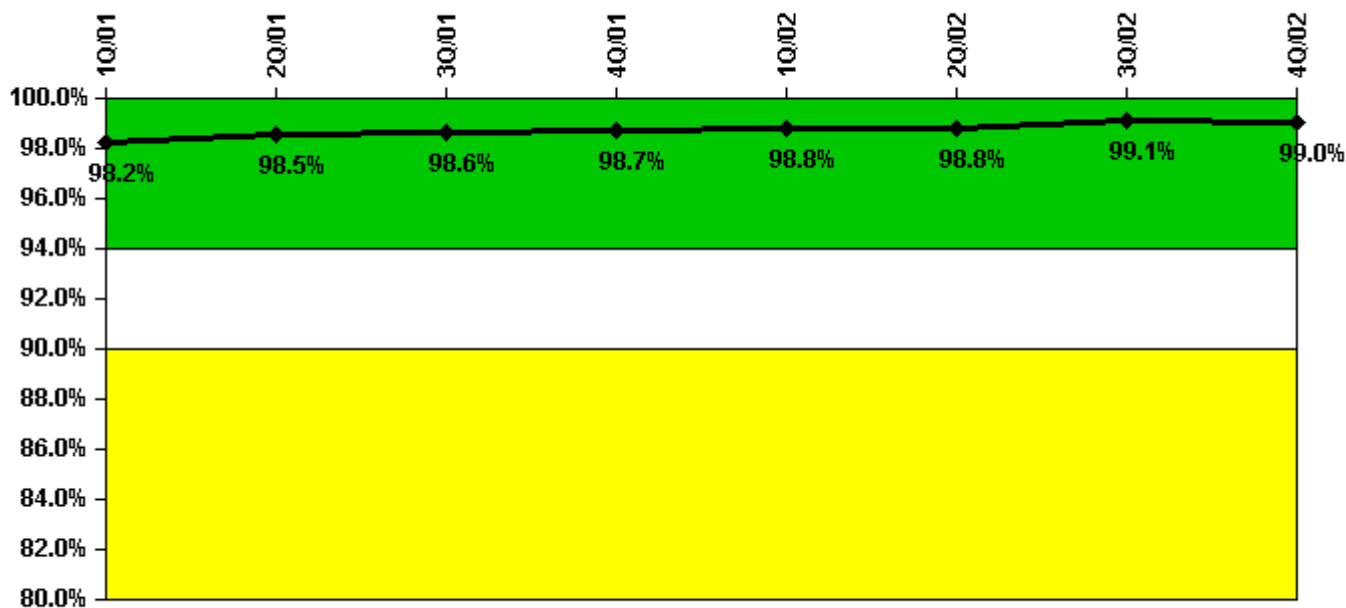
Thresholds: White < 80.0% Yellow < 60.0%

#### Notes

ERO Drill Participation	1Q/01	2Q/01	3Q/01	4Q/01	1Q/02	2Q/02	3Q/02	4Q/02
Participating Key personnel	48.0	48.0	49.0	43.0	43.0	48.0	50.0	51.0
Total Key personnel	50.0	49.0	50.0	44.0	46.0	51.0	51.0	51.0
Indicator value	96.0%	98.0%	98.0%	97.7%	93.5%	94.1%	98.0%	100.0%

Licensee Comments: none

### Alert & Notification System



Thresholds: White < 94.0% Yellow < 90.0%

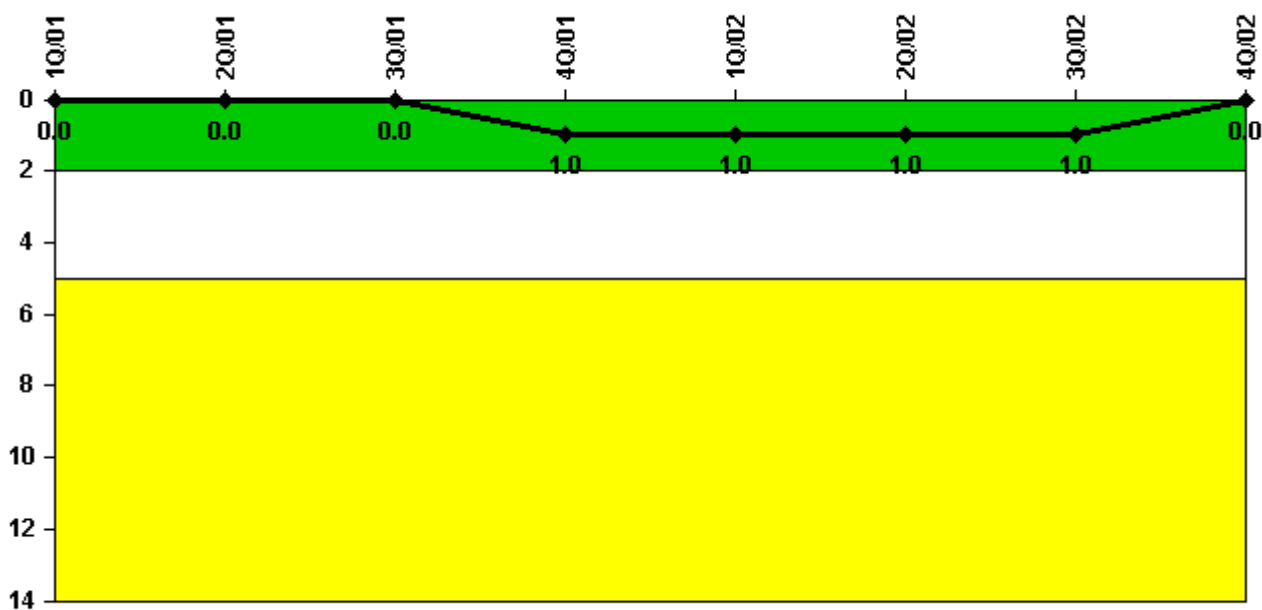
#### Notes

Alert & Notification System	1Q/01	2Q/01	3Q/01	4Q/01	1Q/02	2Q/02	3Q/02	4Q/02
Successful siren-tests	2240	2254	2202	2160	2120	2150	2160	2489
Total sirens-tests	2278	2278	2244	2176	2142	2176	2176	2512
Indicator value	98.2%	98.5%	98.6%	98.7%	98.8%	98.8%	99.1%	99.0%

Licensee Comments:

4Q/02: Additional sirens were added in the 4th quarter 2002 to replace mobile alert notification process.

### Occupational Exposure Control Effectiveness



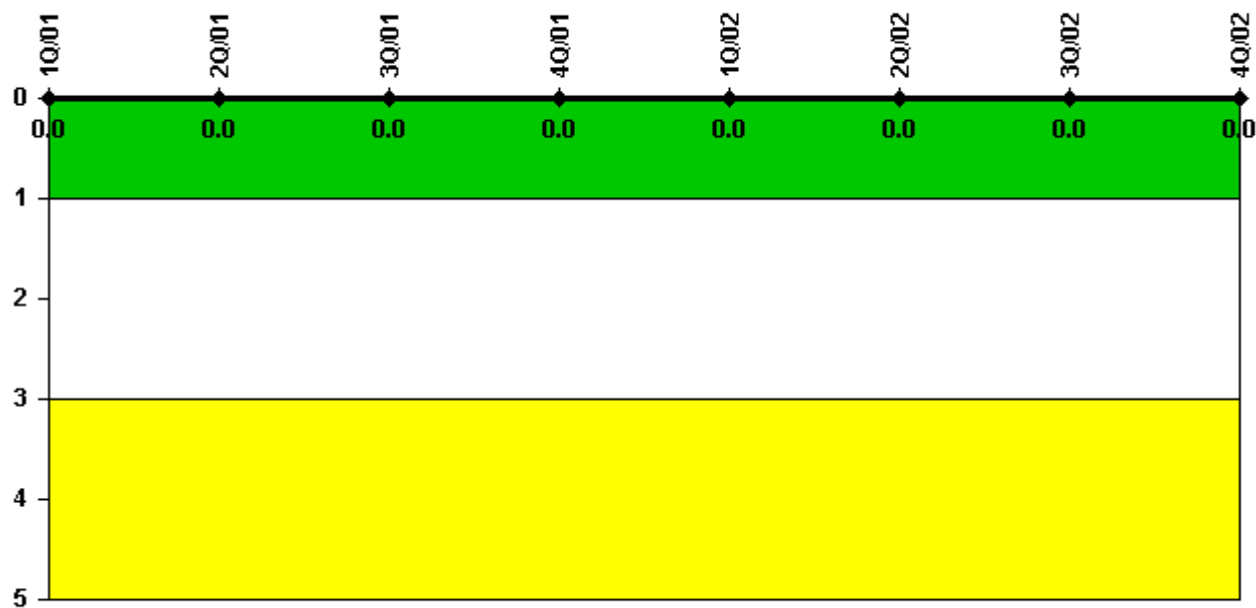
Thresholds: White > 2.0 Yellow > 5.0

#### Notes

Occupational Exposure Control Effectiveness	1Q/01	2Q/01	3Q/01	4Q/01	1Q/02	2Q/02	3Q/02	4Q/02
High radiation area occurrences	0	0	0	1	0	0	0	0
Very high radiation area occurrences	0	0	0	0	0	0	0	0
Unintended exposure occurrences	0	0	0	0	0	0	0	0
Indicator value	0	0	0	1	1	1	1	0

Licensee Comments: none

### RETS/ODCM Radiological Effluent



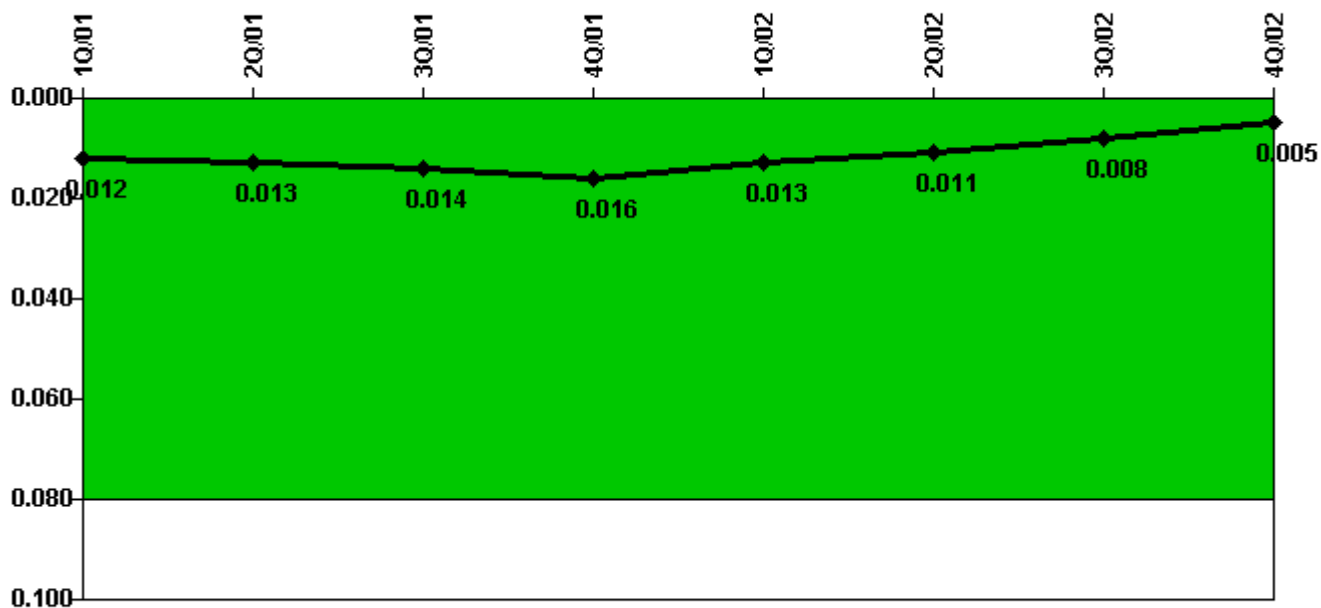
Thresholds: White > 1.0 Yellow > 3.0

#### Notes

RETS/ODCM Radiological Effluent	1Q/01	2Q/01	3Q/01	4Q/01	1Q/02	2Q/02	3Q/02	4Q/02
RETS/ODCM occurrences	0	0	0	0	0	0	0	0
Indicator value	0	0	0	0	0	0	0	0

Licensee Comments: none

### Protected Area Security Performance Index



Thresholds: White > 0.080

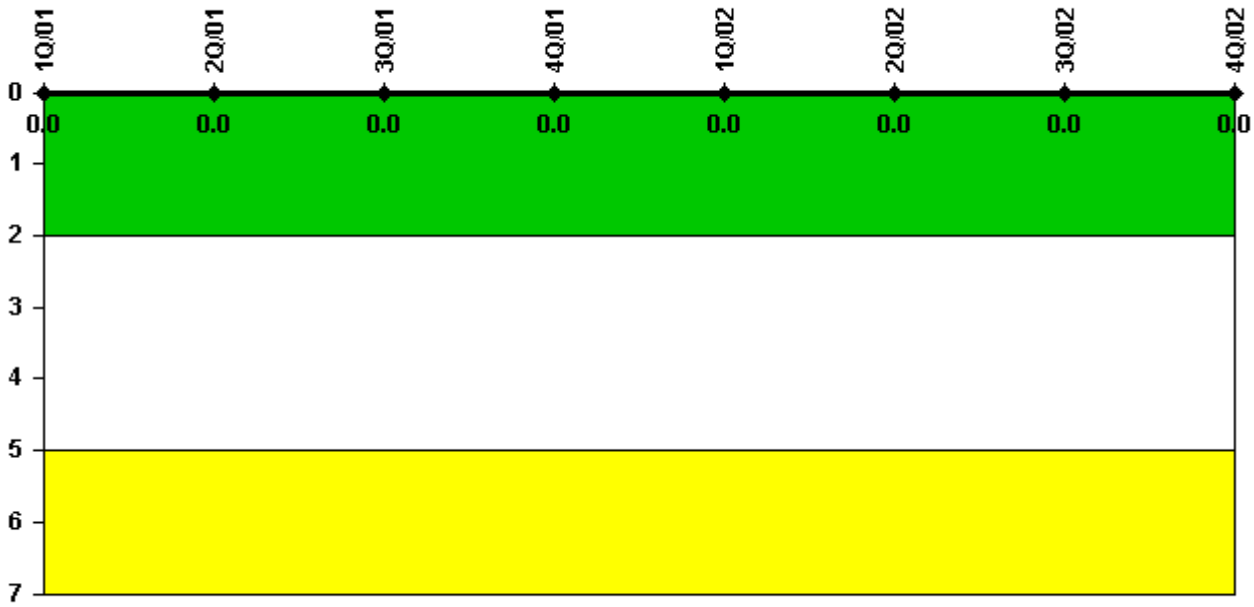
#### Notes

Protected Area Security Performance Index	1Q/01	2Q/01	3Q/01	4Q/01	1Q/02	2Q/02	3Q/02	4Q/02
IDS compensatory hours	75.10	51.60	95.90	68.40	10.80	11.50	36.40	42.60
CCTV compensatory hours	0	17.6	0.4	24.6	0	4.7	2.8	0
IDS normalization factor	1.20	1.20	1.20	1.20	1.20	1.20	1.20	1.20
CCTV normalization factor	1.0	1.0	1.0	1.0	1.0	1.0	1.0	1.0
<b>Index Value</b>	<b>0.012</b>	<b>0.013</b>	<b>0.014</b>	<b>0.016</b>	<b>0.013</b>	<b>0.011</b>	<b>0.008</b>	<b>0.005</b>

Licensee Comments: none



### Personnel Screening Program



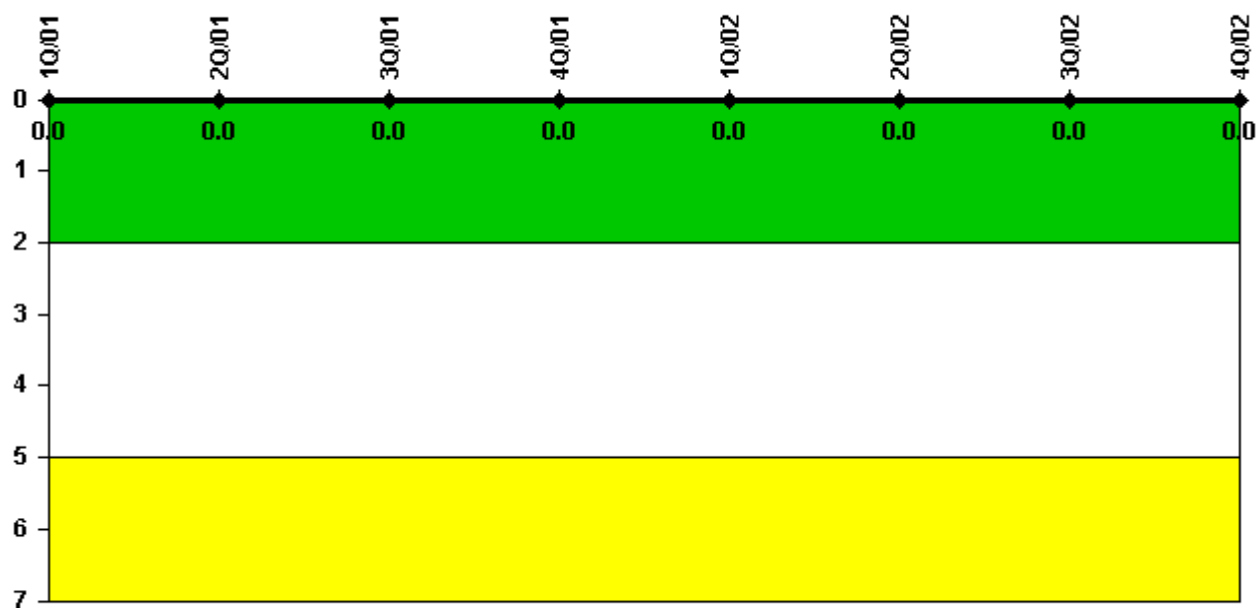
Thresholds: White > 2.0 Yellow > 5.0

#### Notes

Personnel Screening Program	1Q/01	2Q/01	3Q/01	4Q/01	1Q/02	2Q/02	3Q/02	4Q/02
Program failures	0	0	0	0	0	0	0	0
Indicator value	0	0	0	0	0	0	0	0

Licensee Comments: none

### FFD/Personnel Reliability



Thresholds: White > 2.0 Yellow > 5.0

#### Notes

FFD/Personnel Reliability	1Q/01	2Q/01	3Q/01	4Q/01	1Q/02	2Q/02	3Q/02	4Q/02
Program Failures	0	0	0	0	0	0	0	0
Indicator value	0	0	0	0	0	0	0	0

Licensee Comments: none

▲ [PI Summary](#) | [Inspection Findings Summary](#) | [Reactor Oversight Process](#)

Last Modified: January 30, 2003