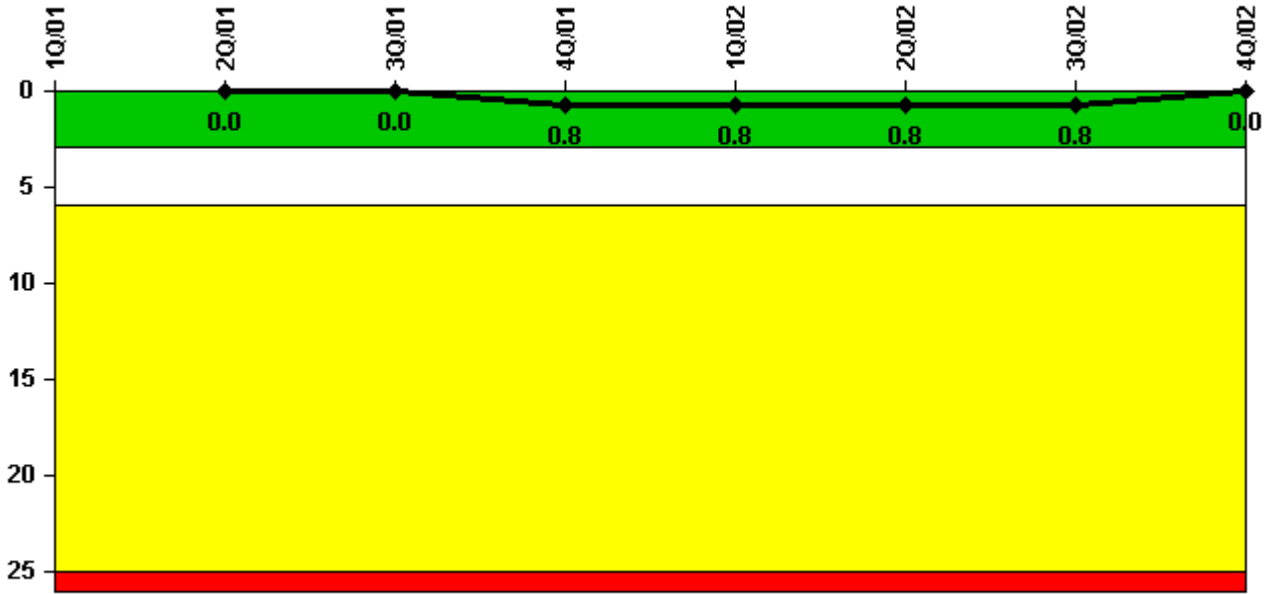


## Indian Point 2

### 4Q/2002 Performance Indicators

Licensee's General Comments: none

#### Unplanned Scrams per 7000 Critical Hrs



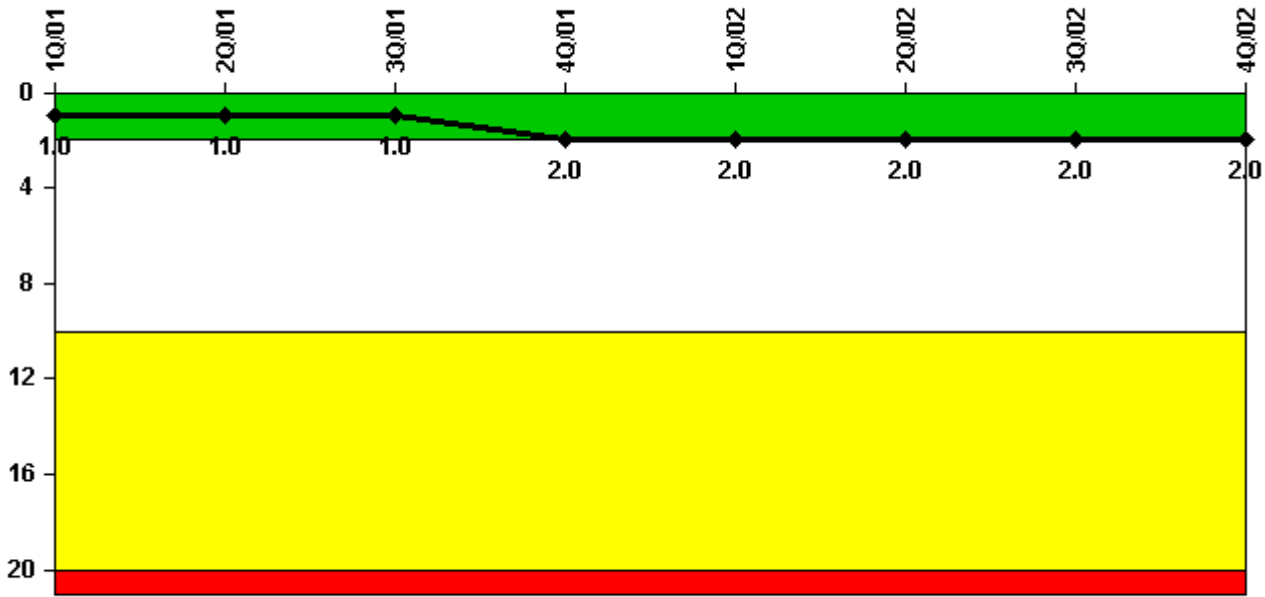
**Thresholds: White > 3.0 Yellow > 6.0 Red > 25.0**

#### Notes

Unplanned Scrams per 7000 Critical Hrs	1Q/01	2Q/01	3Q/01	4Q/01	1Q/02	2Q/02	3Q/02	4Q/02
Unplanned scrams	0	0	0	1.0	0	0	0	0
Critical hours	2160.0	2183.0	2208.0	1963.0	2160.0	2183.0	2208.0	1449.9
Indicator value	N/A	0	0	0.8	0.8	0.8	0.8	0

Licensee Comments: none

### Scrams with Loss of Normal Heat Removal



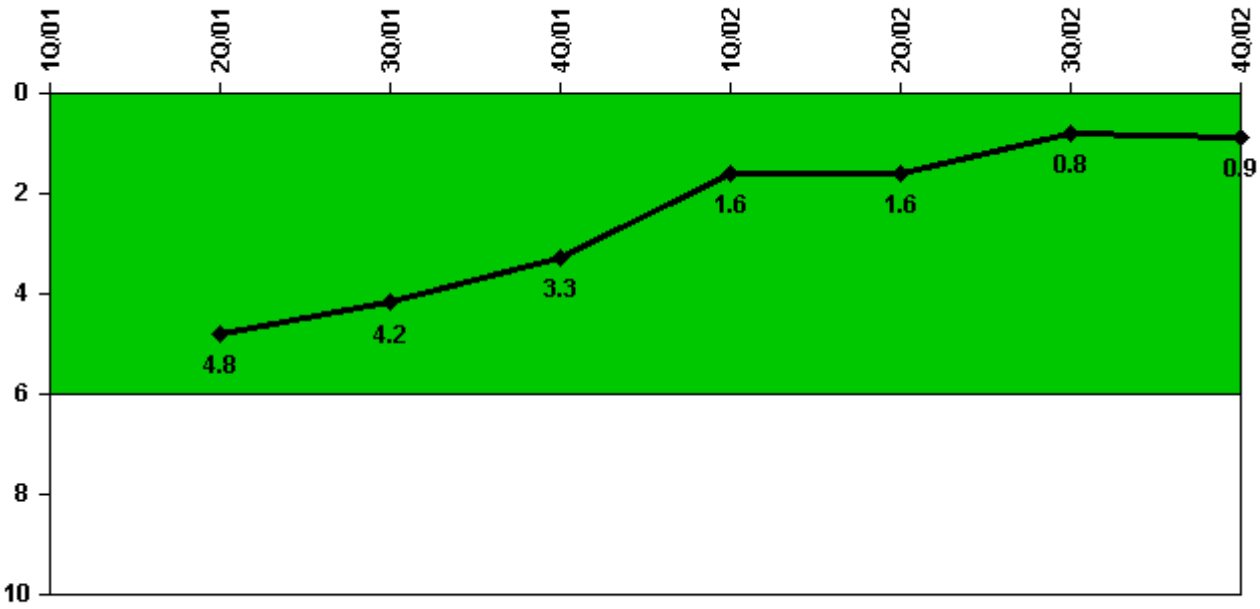
Thresholds: White > 2.0 Yellow > 10.0 Red > 20.0

#### Notes

Scrams with Loss of Normal Heat Removal	1Q/01	2Q/01	3Q/01	4Q/01	1Q/02	2Q/02	3Q/02	4Q/02
Scrams	0	0	0	1.0	0	0	0	0
Indicator value	1.0	1.0	1.0	2.0	2.0	2.0	2.0	2.0

Licensee Comments: none

### Unplanned Power Changes per 7000 Critical Hrs



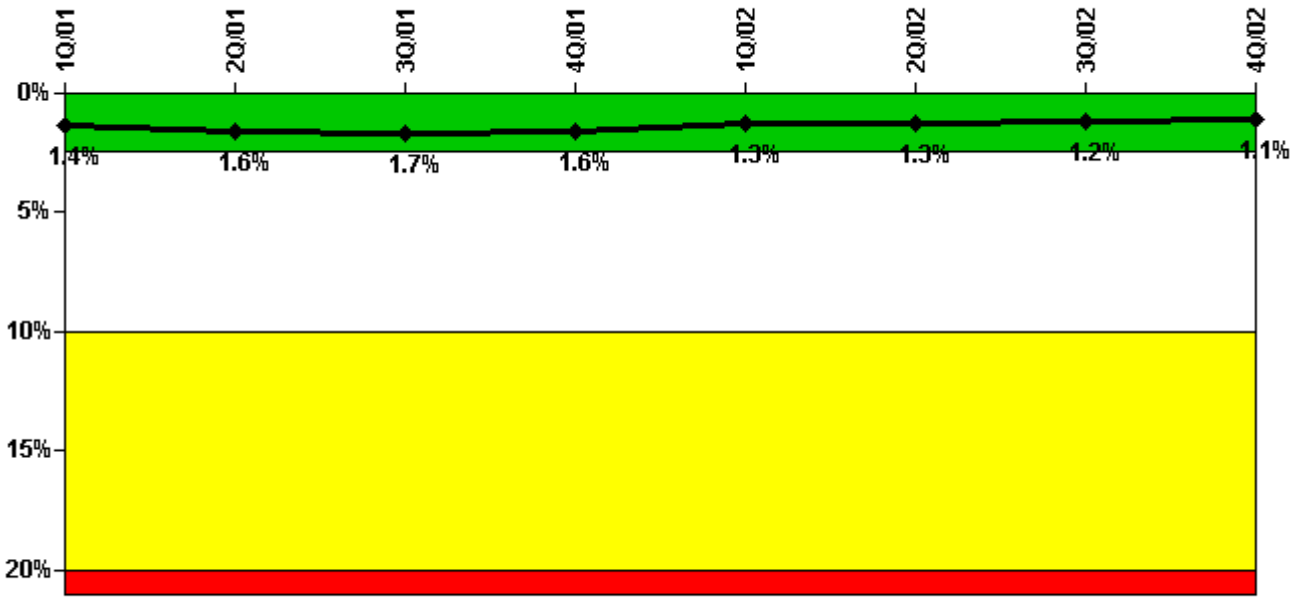
Thresholds: White > 6.0

#### Notes

Unplanned Power Changes per 7000 Critical Hrs	1Q/01	2Q/01	3Q/01	4Q/01	1Q/02	2Q/02	3Q/02	4Q/02
Unplanned power changes	2.0	1.0	1.0	0	0	1.0	0	0
Critical hours	2160.0	2183.0	2208.0	1963.0	2160.0	2183.0	2208.0	1449.9
Indicator value	N/A	4.8	4.2	3.3	1.6	1.6	0.8	0.9

Licensee Comments: none

### Safety System Unavailability, Emergency AC Power, >2EDG



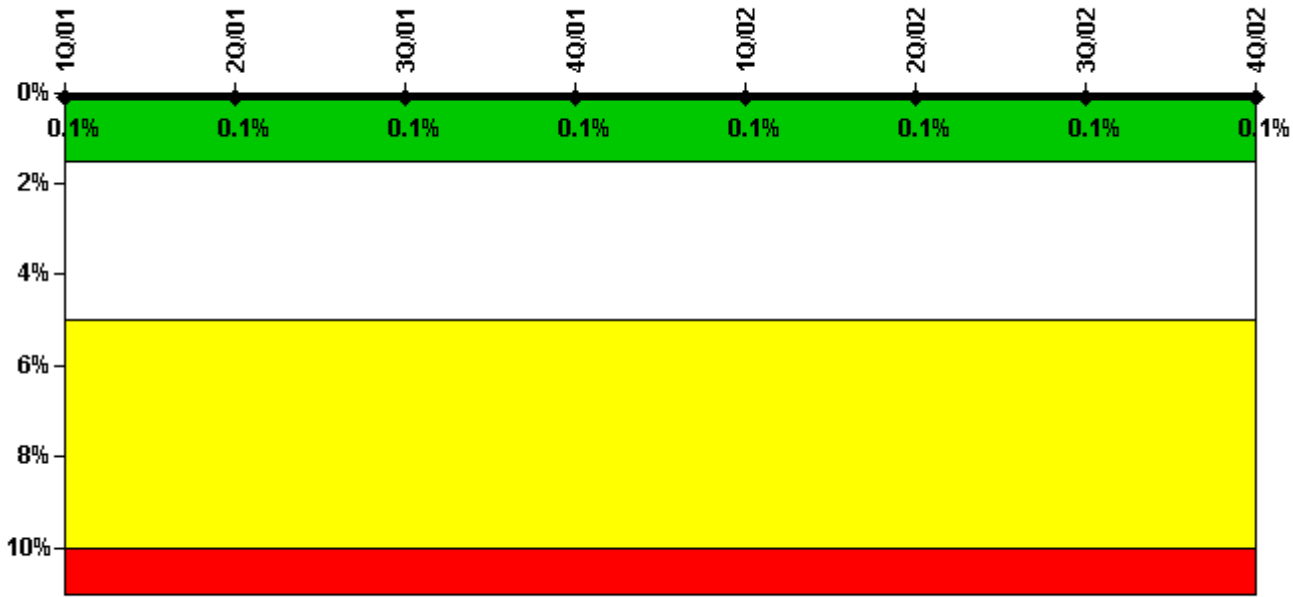
Thresholds: White > 2.5% Yellow > 10.0% Red > 20.0%

#### Notes

Safety System Unavailability, Emergency AC Power, >2EDG	1Q/01	2Q/01	3Q/01	4Q/01	1Q/02	2Q/02	3Q/02	4Q/02
<b>Train 1</b>								
Planned unavailable hours	7.30	111.65	8.80	0	0	21.17	4.88	0
Unplanned unavailable hours	0.80	32.93	0	0	0.08	0	0	23.97
Fault exposure hours	0	0	0	0	0	0	0	0
Effective Reset hours	0	0	0	0	0	0	0	0
Required hours	2160.00	2183.00	2208.00	2208.00	2160.00	2183.00	2208.00	2209.00
<b>Train 2</b>								
Planned unavailable hours	125.87	9.92	51.58	0	34.80	0	0	0
Unplanned unavailable hours	0.63	1.03	0	10.20	18.67	0	29.45	4.57
Fault exposure hours	0	0	0	0	0	0	0	0
Effective Reset hours	0	0	0	0	0	0	0	0
Required hours	2160.00	2183.00	2208.00	2208.00	2160.00	2183.00	2208.00	2209.00
<b>Train 3</b>								
Planned unavailable hours	81.62	28.93	86.63	0	39.72	0	0	0.60
Unplanned unavailable hours	0.88	29.03	0	4.85	23.08	0	0	28.85
Fault exposure hours	0	0	0	0	0	0	0	0
Effective Reset hours	1443.93	0	0	0	0	0	0	0
Required hours	2160.00	2183.00	2208.00	2208.00	2160.00	2183.00	2208.00	2209.00
<b>Indicator value</b>	<b>1.4%</b>	<b>1.6%</b>	<b>1.7%</b>	<b>1.6%</b>	<b>1.3%</b>	<b>1.3%</b>	<b>1.2%</b>	<b>1.1%</b>

Licensee Comments: none

### Safety System Unavailability, High Pressure Injection System (HPSI)



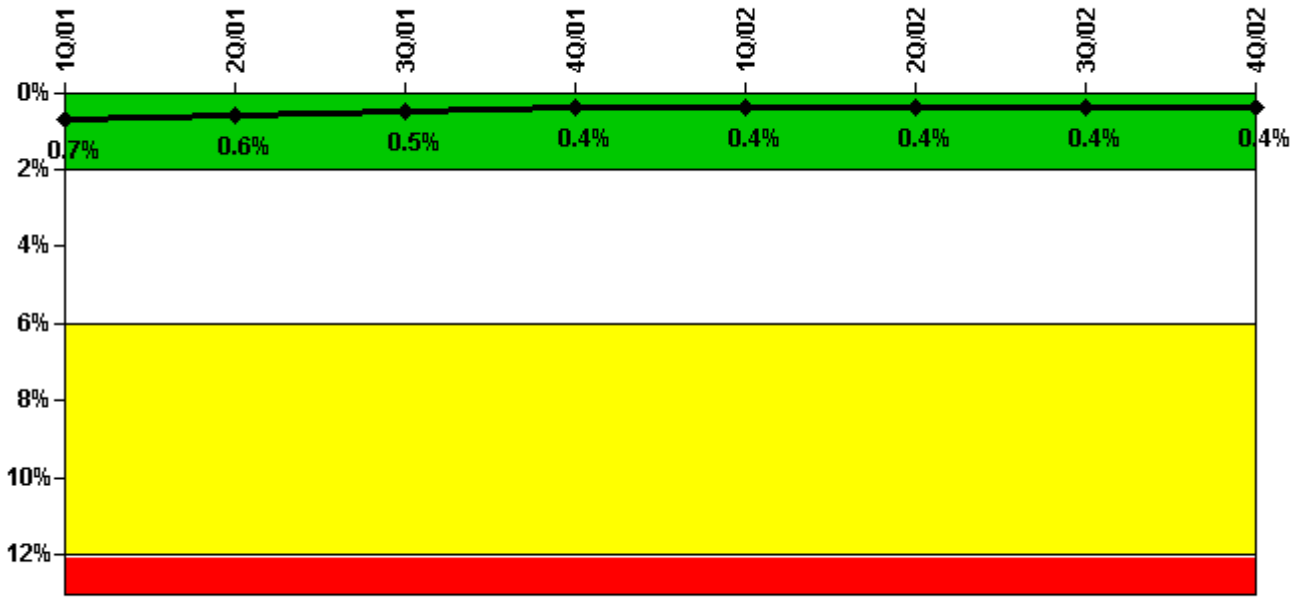
Thresholds: White > 1.5% Yellow > 5.0% Red > 10.0%

#### Notes

Safety System Unavailability, High Pressure Injection System (HPSI)	1Q/01	2Q/01	3Q/01	4Q/01	1Q/02	2Q/02	3Q/02	4Q/02
<b>Train 1</b>								
Planned unavailable hours	1.00	5.50	1.00	0.23	0.68	0	0	0
Unplanned unavailable hours	0	0	0	0	0	0	0.25	0
Fault exposure hours	0	0	0	0	0	0	0	0
Effective Reset hours	0	0	0	0	0	0	0	0
Required hours	2160.00	2183.00	2208.00	1962.98	2160.00	2183.00	2208.00	1449.87
<b>Train 2</b>								
Planned unavailable hours	6.00	2.53	6.56	0	0.28	0	1.43	0
Unplanned unavailable hours	0	0	0	0.17	0	13.30	0	0
Fault exposure hours	0	0	0	0	0	0	0	0
Effective Reset hours	0	0	0	0	0	0	0	0
Required hours	2160.00	2183.00	2208.00	1962.98	2160.00	2183.00	2208.00	1449.87
<b>Train 3</b>								
Planned unavailable hours	4.00	0.40	3.83	0.32	0.41	0	0	0
Unplanned unavailable hours	0	0	0	0	0	0	0	0
Fault exposure hours	0	0	0	0	0	0	0	0
Effective Reset hours	0	0	0	0	0	0	0	0
Required hours	2160.00	2183.00	2208.00	1962.98	2160.00	2183.00	2208.00	1449.87
<b>Indicator value</b>	<b>0.1%</b>	<b>0.1%</b>	<b>0.1%</b>	<b>0.1%</b>	<b>0.1%</b>	<b>0.1%</b>	<b>0.1%</b>	<b>0.1%</b>

Licensee Comments: none

### Safety System Unavailability, Heat Removal System (AFW)



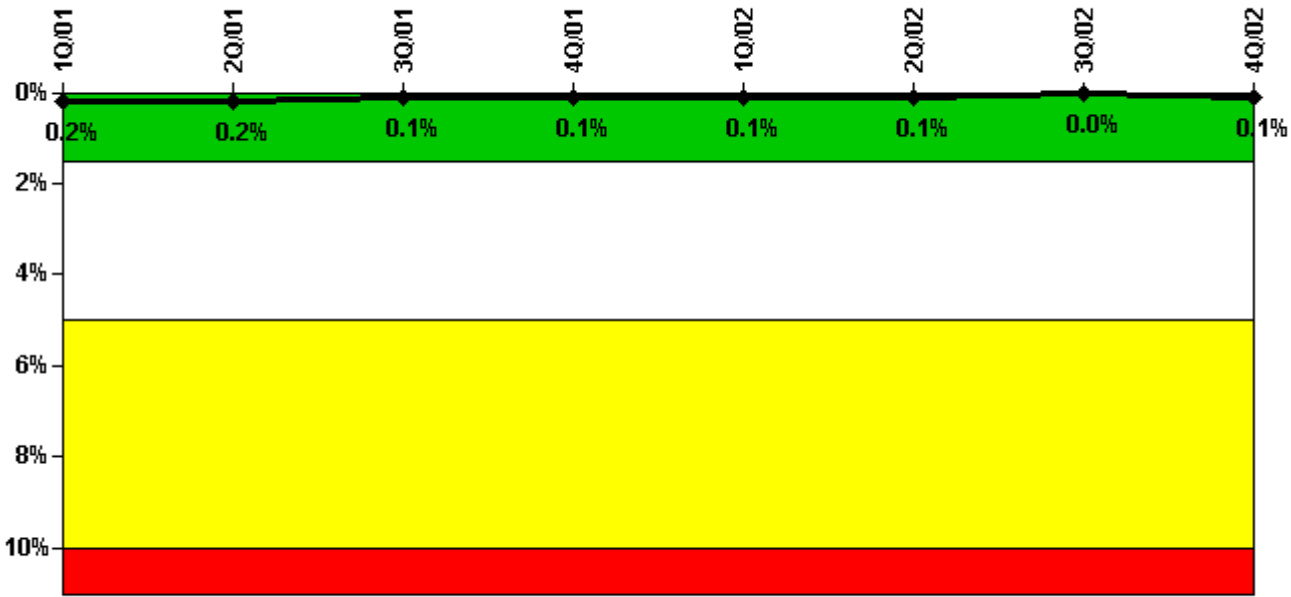
Thresholds: White > 2.0% Yellow > 6.0% Red > 12.0%

#### Notes

Safety System Unavailability, Heat Removal System (AFW)	1Q/01	2Q/01	3Q/01	4Q/01	1Q/02	2Q/02	3Q/02	4Q/02
<b>Train 1</b>								
Planned unavailable hours	5.00	5.10	8.50	0	0.71	0	3.56	6.75
Unplanned unavailable hours	0.40	0	0	12.37	33.75	7.82	0	0
Fault exposure hours	0	0	0	0	0	0	0	0
Effective Reset hours	0	0	0	0	0	0	0	0
Required hours	2160.00	2183.00	2208.00	1962.98	2160.00	2183.00	2208.00	1449.87
<b>Train 2</b>								
Planned unavailable hours	5.75	5.80	6.17	0.96	2.38	10.00	14.32	0.50
Unplanned unavailable hours	0.42	0	0	1.65	0	0	0.33	0
Fault exposure hours	0	0	0	0	0	0	0	0
Effective Reset hours	0	0	0	0	0	0	0	0
Required hours	2160.00	2183.00	2208.00	1962.98	2160.00	2183.00	2208.00	1449.87
<b>Train 3</b>								
Planned unavailable hours	13.50	2.50	1.30	12.70	0.33	0.51	8.08	0.38
Unplanned unavailable hours	4.42	3.50	0	0	0	0	0	0
Fault exposure hours	0	0	0	0	0	0	0	0
Effective Reset hours	0	0	0	0	0	0	0	0
Required hours	2160.00	2183.00	2208.00	1962.98	2160.00	2183.00	2208.00	1449.87
<b>Indicator value</b>	<b>0.7%</b>	<b>0.6%</b>	<b>0.5%</b>	<b>0.4%</b>	<b>0.4%</b>	<b>0.4%</b>	<b>0.4%</b>	<b>0.4%</b>

Licensee Comments: none

### Safety System Unavailability, Residual Heat Removal System



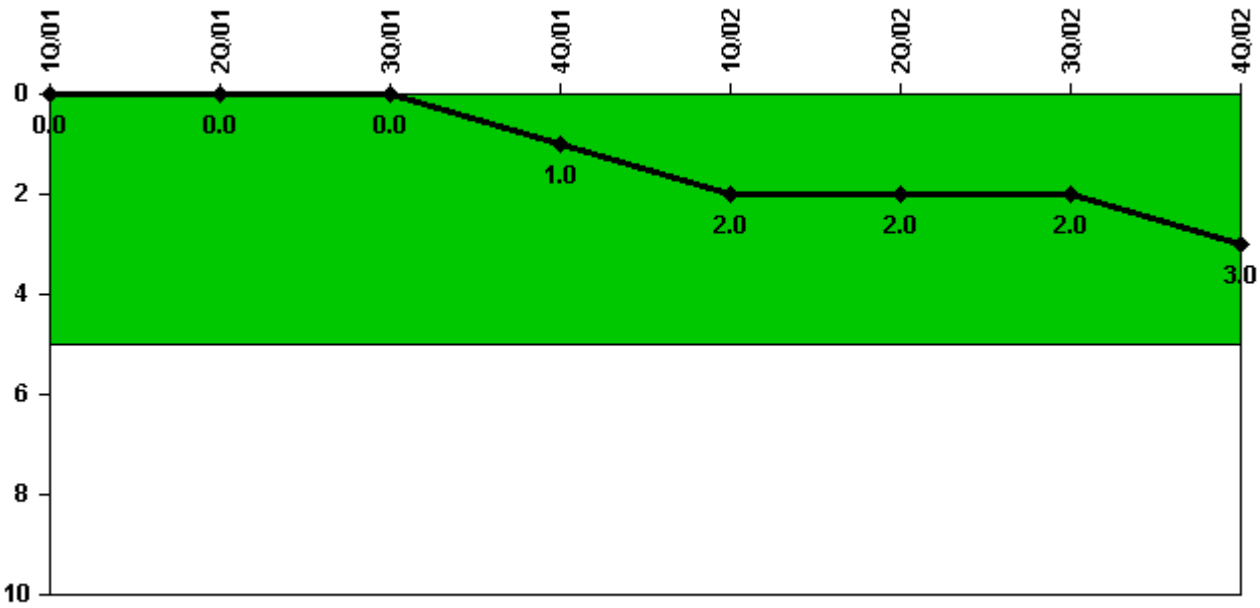
Thresholds: White > 1.5% Yellow > 5.0% Red > 10.0%

**Notes**

Safety System Unavailability, Residual Heat Removal System	1Q/01	2Q/01	3Q/01	4Q/01	1Q/02	2Q/02	3Q/02	4Q/02
<b>Train 1</b>								
Planned unavailable hours	8.00	4.50	0.25	0	0.45	0	0.32	0
Unplanned unavailable hours	6.40	0	0	0.17	0	0	0	19.30
Fault exposure hours	0	0	0	0	0	0	0	0
Effective Reset hours	0	0	0	0	0	0	0	0
Required hours	2160.00	2183.00	2208.00	2209.00	2160.00	2183.00	2208.00	2042.60
<b>Train 2</b>								
Planned unavailable hours	0	0.50	0.08	0	0.86	0	0.57	0
Unplanned unavailable hours	4.50	0	0	0	0	0	0	0
Fault exposure hours	0	0	0	0	0	0	0	0
Effective Reset hours	0	0	0	0	0	0	0	0
Required hours	2160.00	2183.00	2208.00	2209.00	2160.00	2183.00	2208.00	2042.60
<b>Train 3</b>								
Planned unavailable hours	0	0	0	0	0	0	0	0
Unplanned unavailable hours	0	0	0	0	0	0	0.25	0
Fault exposure hours	0	0	0	0	0	0	0	0
Effective Reset hours	0	0	0	0	0	0	0	0
Required hours	2160.00	2183.00	2208.00	2209.00	2160.00	2183.00	2208.00	1449.87
<b>Train 4</b>								
Planned unavailable hours	0	0	0	0	0	0	0	0
Unplanned unavailable hours	0	0	0	0	0	0	0	0
Fault exposure hours	0	0	0	0	0	0	0	0
Effective Reset hours	0	0	0	0	0	0	0	0
Required hours	2160.00	2183.00	2208.00	2209.00	2160.00	2183.00	2208.00	1449.87
<b>Indicator value</b>	<b>0.2%</b>	<b>0.2%</b>	<b>0.1%</b>	<b>0.1%</b>	<b>0.1%</b>	<b>0.1%</b>	<b>0%</b>	<b>0.1%</b>

Licensee Comments: none

### Safety System Functional Failures (PWR)



Thresholds: White > 5.0

#### Notes

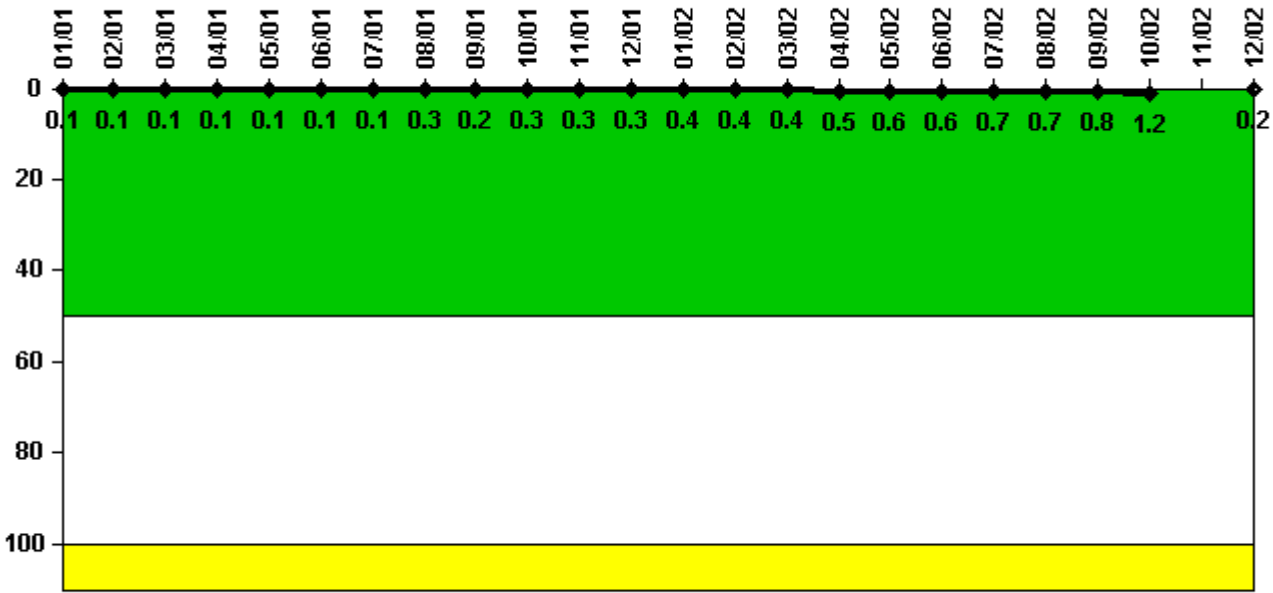
Safety System Functional Failures (PWR)	1Q/01	2Q/01	3Q/01	4Q/01	1Q/02	2Q/02	3Q/02	4Q/02
Safety System Functional Failures	0	0	0	1	1	0	0	2
Indicator value	0	0	0	1	2	2	2	3

Licensee Comments:

4Q/02: LER-2002-005 and LER-2002-006



### Reactor Coolant System Activity



Thresholds: White > 50.0 Yellow > 100.0

#### Notes

Reactor Coolant System Activity	1/01	2/01	3/01	4/01	5/01	6/01	7/01	8/01	9/01	10/01	11/01	12/01
Maximum activity	0.000600	0.000700	0.000800	0.000770	0.000790	0.001400	0.001100	0.002700	0.001600	0.002500	0.002900	0.003400
Technical specification limit	1.0	1.0	1.0	1.0	1.0	1.0	1.0	1.0	1.0	1.0	1.0	1.0
Indicator value	0.1	0.1	0.1	0.1	0.1	0.1	0.1	0.3	0.2	0.3	0.3	0.3

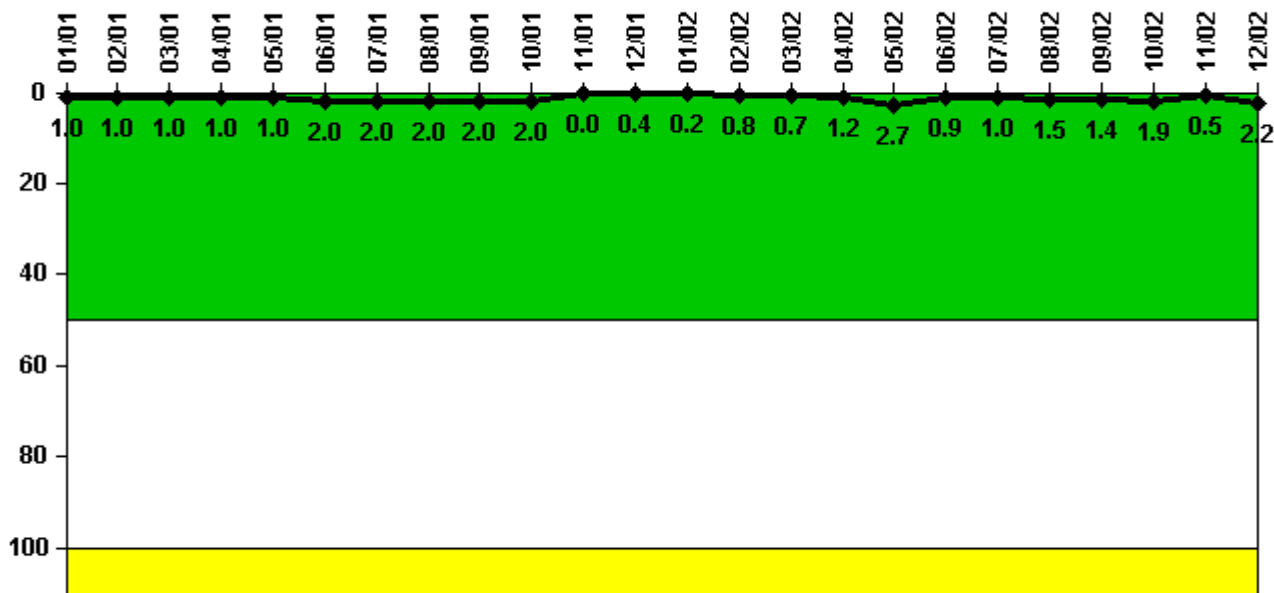
  

Reactor Coolant System Activity	1/02	2/02	3/02	4/02	5/02	6/02	7/02	8/02	9/02	10/02	11/02	12/02
Maximum activity	0.003800	0.004300	0.004300	0.004900	0.005800	0.006400	0.006600	0.007200	0.007700	0.012000	N/A	0.001600
Technical specification limit	1.0	1.0	1.0	1.0	1.0	1.0	1.0	1.0	1.0	1.0	1.0	1.0
Indicator value	0.4	0.4	0.4	0.5	0.6	0.6	0.7	0.7	0.8	1.2	N/A	0.2

Licensee Comments:

12/02: The unit returned to service after the 2R15 refueling outage. A steady state power level above 5% that did not vary by more than +/- 5% for at least 72 hours was not maintained during power ascension for the month of November 2002.

### Reactor Coolant System Leakage



Thresholds: White > 50.0 Yellow > 100.0

#### Notes

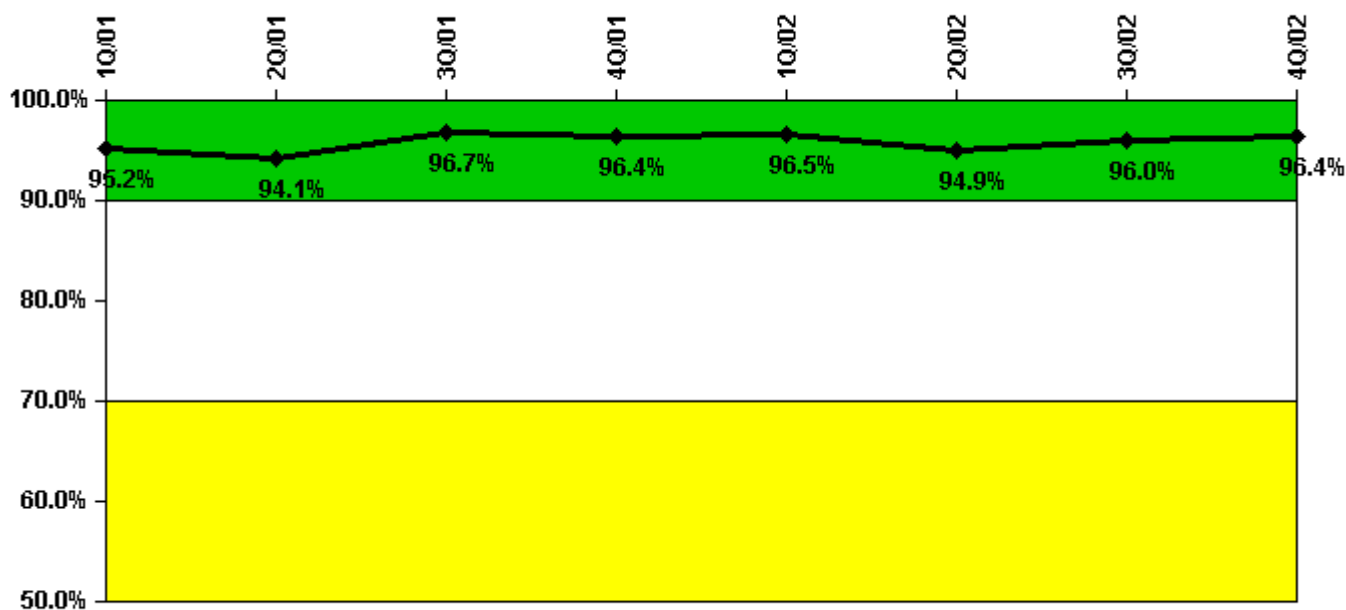
Reactor Coolant System Leakage	1/01	2/01	3/01	4/01	5/01	6/01	7/01	8/01	9/01	10/01	11/01	12/01
Maximum leakage	0.100	0.100	0.100	0.100	0.100	0.200	0.200	0.200	0.200	0.200	0	0.039
Technical specification limit	10.0	10.0	10.0	10.0	10.0	10.0	10.0	10.0	10.0	10.0	10.0	10.0
Indicator value	1.0	1.0	1.0	1.0	1.0	2.0	2.0	2.0	2.0	2.0	0	0.4

Reactor Coolant System Leakage	1/02	2/02	3/02	4/02	5/02	6/02	7/02	8/02	9/02	10/02	11/02	12/02
Maximum leakage	0.019	0.077	0.068	0.118	0.269	0.090	0.099	0.154	0.143	0.190	0.052	0.224
Technical specification limit	10.0	10.0	10.0	10.0	10.0	10.0	10.0	10.0	10.0	10.0	10.0	10.0
Indicator value	0.2	0.8	0.7	1.2	2.7	0.9	1.0	1.5	1.4	1.9	0.5	2.2

Licensee Comments: none

### Drill/Exercise Performance



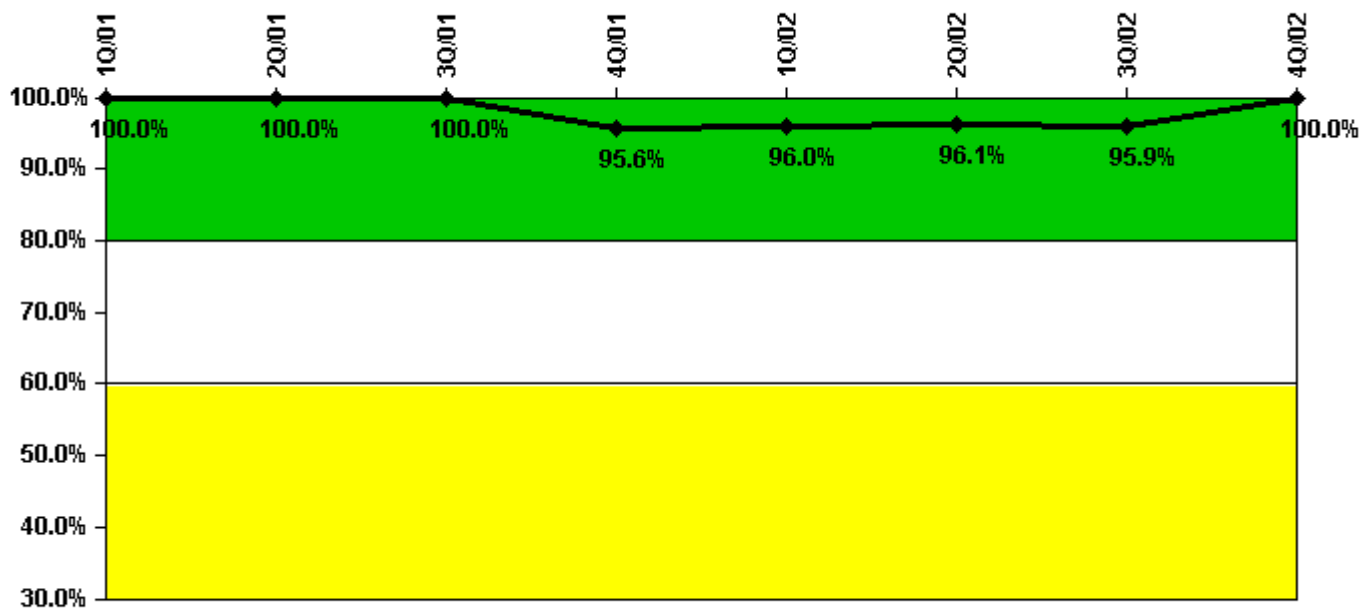
Thresholds: White < 90.0% Yellow < 70.0%

### Notes

Drill/Exercise Performance	1Q/01	2Q/01	3Q/01	4Q/01	1Q/02	2Q/02	3Q/02	4Q/02
Successful opportunities	28.0	15.0	26.0	10.0	6.0	22.0	50.0	2.0
Total opportunities	29.0	18.0	26.0	10.0	6.0	24.0	50.0	2.0
Indicator value	95.2%	94.1%	96.7%	96.4%	96.5%	94.9%	96.0%	96.4%

Licensee Comments: none

### ERO Drill Participation



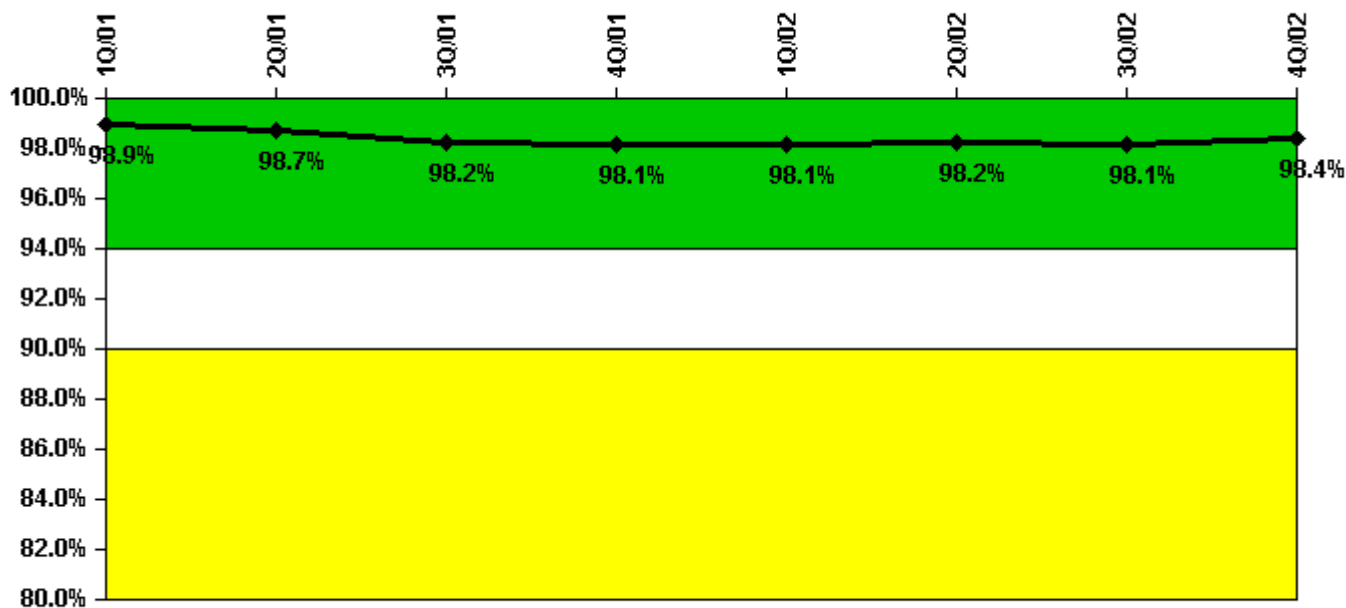
Thresholds: White < 80.0% Yellow < 60.0%

#### Notes

ERO Drill Participation	1Q/01	2Q/01	3Q/01	4Q/01	1Q/02	2Q/02	3Q/02	4Q/02
Participating Key personnel	48.0	48.0	45.0	43.0	48.0	49.0	47.0	50.0
Total Key personnel	48.0	48.0	45.0	45.0	50.0	51.0	49.0	50.0
Indicator value	100.0%	100.0%	100.0%	95.6%	96.0%	96.1%	95.9%	100.0%

Licensee Comments: none

### Alert & Notification System



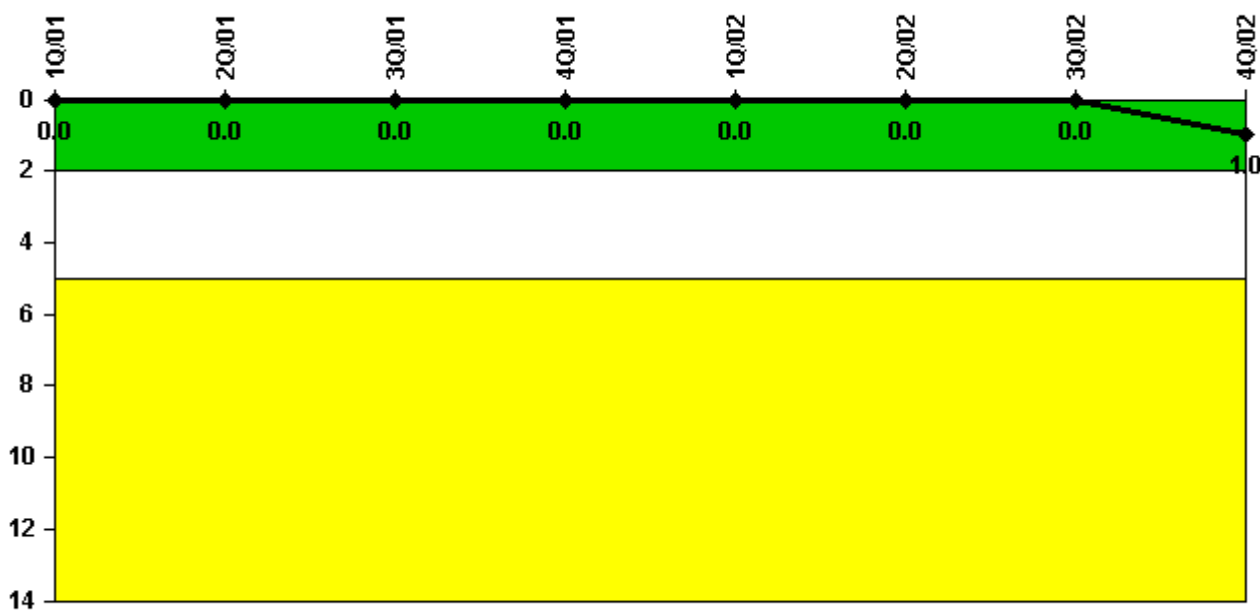
Thresholds: White < 94.0% Yellow < 90.0%

#### Notes

Alert & Notification System	1Q/01	2Q/01	3Q/01	4Q/01	1Q/02	2Q/02	3Q/02	4Q/02
Successful siren-tests	1069	1062	997	1197	1003	1111	991	1267
Total sirens-tests	1078	1078	1029	1222	1011	1124	1029	1277
Indicator value	98.9%	98.7%	98.2%	98.1%	98.1%	98.2%	98.1%	98.4%

Licensee Comments: none

### Occupational Exposure Control Effectiveness



Thresholds: White > 2.0 Yellow > 5.0

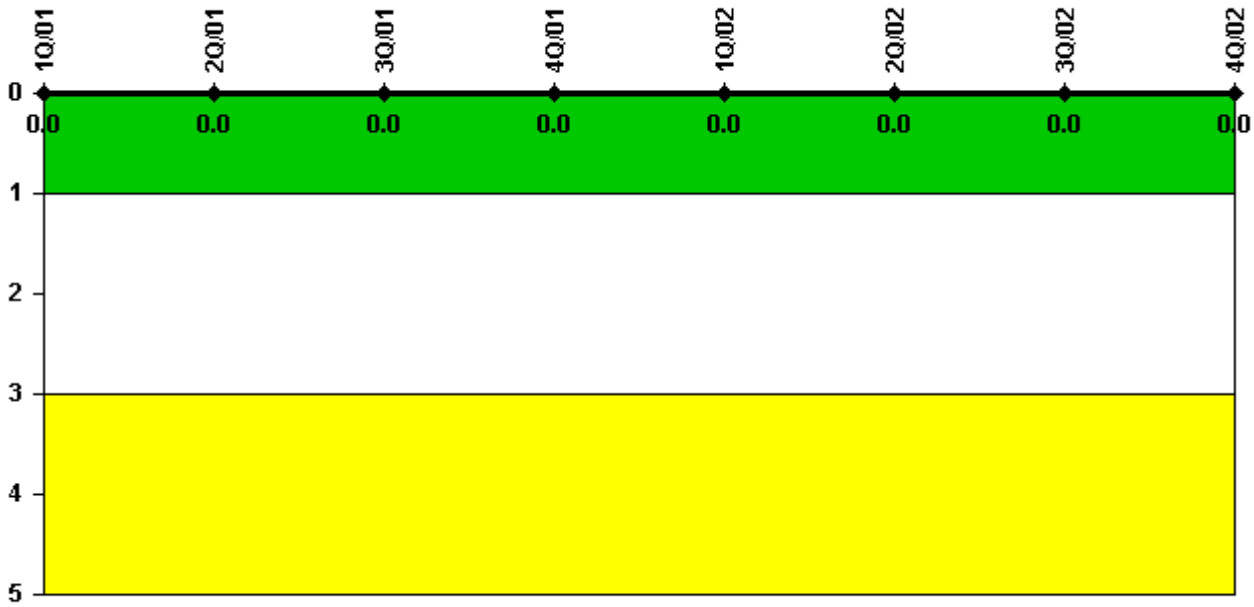
#### Notes

Occupational Exposure Control Effectiveness	1Q/01	2Q/01	3Q/01	4Q/01	1Q/02	2Q/02	3Q/02	4Q/02
High radiation area occurrences	0	0	0	0	0	0	0	1
Very high radiation area occurrences	0	0	0	0	0	0	0	0
Unintended exposure occurrences	0	0	0	0	0	0	0	0
Indicator value	0	0	0	0	0	0	0	1

Licensee Comments:

4Q/02: October 27, 2002 - Improper control of potential access to Regen Heat Exchanger identified. No Individuals entered the area and no excessive dose was received. Indicator trend remains within green threshold.

### RETS/ODCM Radiological Effluent



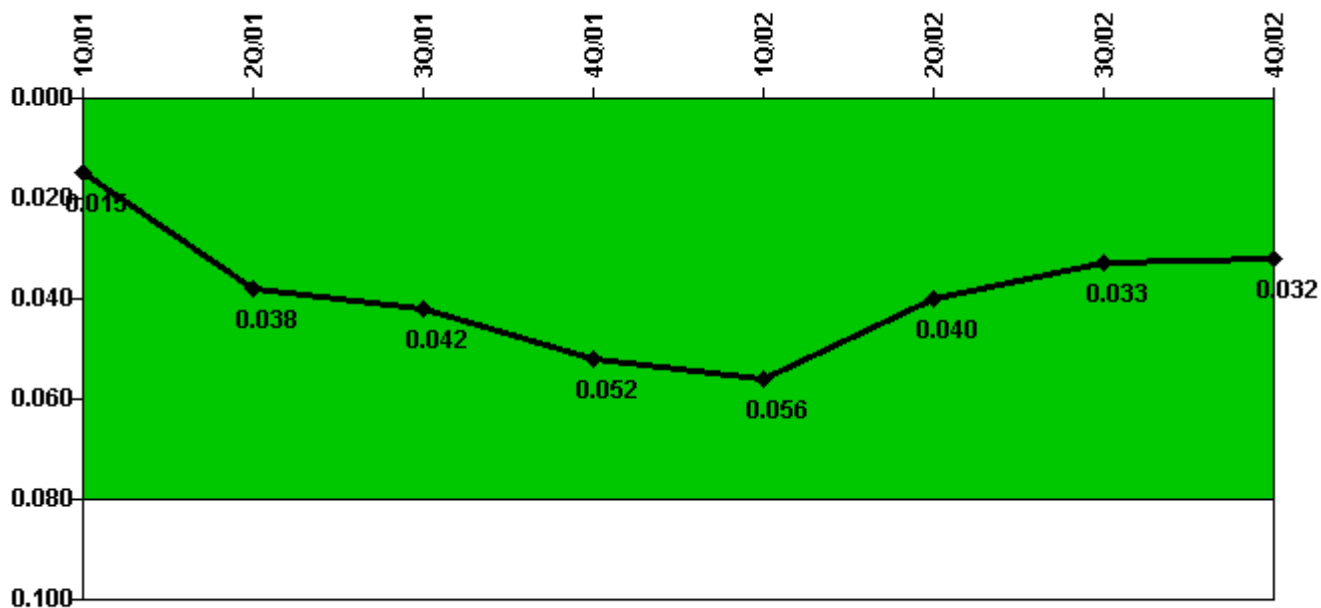
Thresholds: White > 1.0 Yellow > 3.0

#### Notes

RETS/ODCM Radiological Effluent	1Q/01	2Q/01	3Q/01	4Q/01	1Q/02	2Q/02	3Q/02	4Q/02
RETS/ODCM occurrences	0	0	0	0	0	0	0	0
Indicator value	0	0	0	0	0	0	0	0

Licensee Comments: none

### Protected Area Security Performance Index



Thresholds: White > 0.080

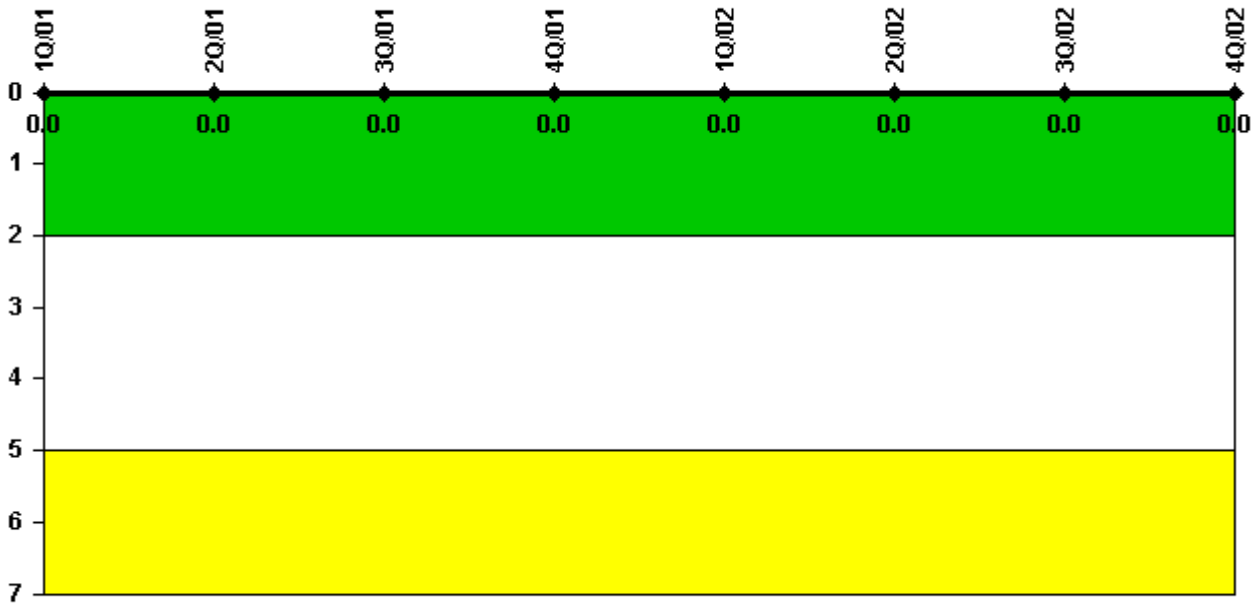
#### Notes

Protected Area Security Performance Index	1Q/01	2Q/01	3Q/01	4Q/01	1Q/02	2Q/02	3Q/02	4Q/02
IDS compensatory hours	7.49	238.12	114.83	47.93	34.74	206.95	15.55	82.72
CCTV compensatory hours	21.0	285.2	25.8	219.3	72.6	0	2.4	159.2
IDS normalization factor	1.00	1.00	1.00	1.00	1.00	1.00	1.00	1.00
CCTV normalization factor	1.1	1.1	1.1	1.1	1.1	1.1	1.1	1.1
<b>Index Value</b>	<b>0.015</b>	<b>0.038</b>	<b>0.042</b>	<b>0.052</b>	<b>0.056</b>	<b>0.040</b>	<b>0.033</b>	<b>0.032</b>

Licensee Comments: none



### Personnel Screening Program



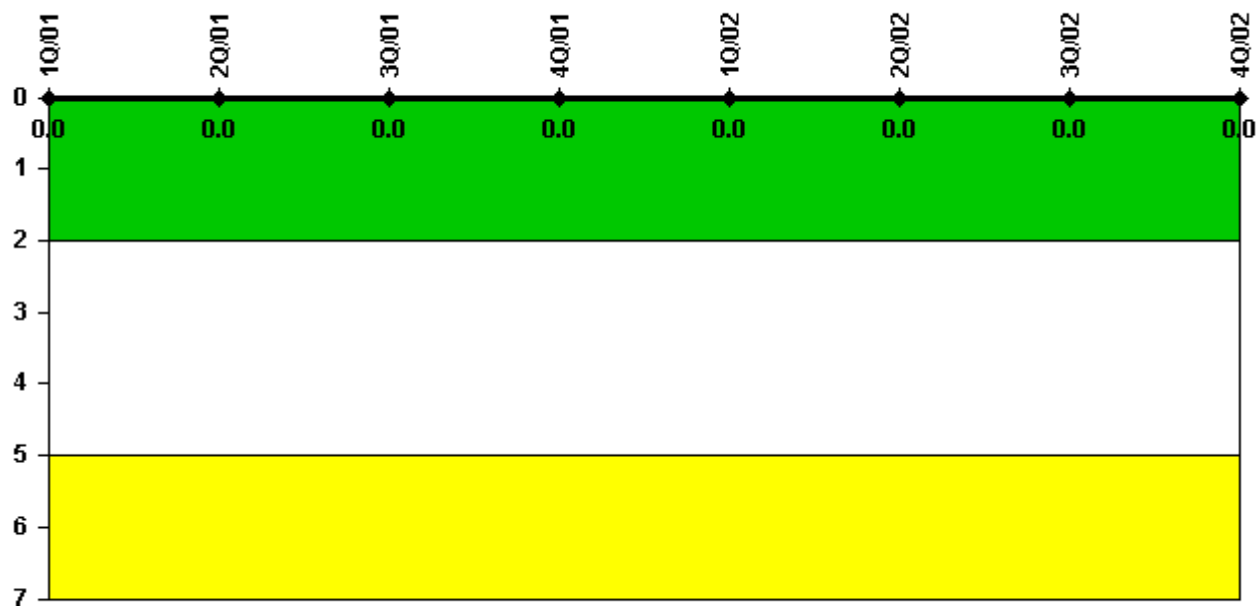
Thresholds: White > 2.0 Yellow > 5.0

#### Notes

Personnel Screening Program	1Q/01	2Q/01	3Q/01	4Q/01	1Q/02	2Q/02	3Q/02	4Q/02
Program failures	0	0	0	0	0	0	0	0
Indicator value	0	0	0	0	0	0	0	0

Licensee Comments: none

### FFD/Personnel Reliability



Thresholds: White > 2.0 Yellow > 5.0

### Notes

FFD/Personnel Reliability	1Q/01	2Q/01	3Q/01	4Q/01	1Q/02	2Q/02	3Q/02	4Q/02
Program Failures	0	0	0	0	0	0	0	0
Indicator value	0	0	0	0	0	0	0	0

Licensee Comments: none

▲ [PI Summary](#) | [Inspection Findings Summary](#) | [Reactor Oversight Process](#)

Last Modified: January 30, 2003