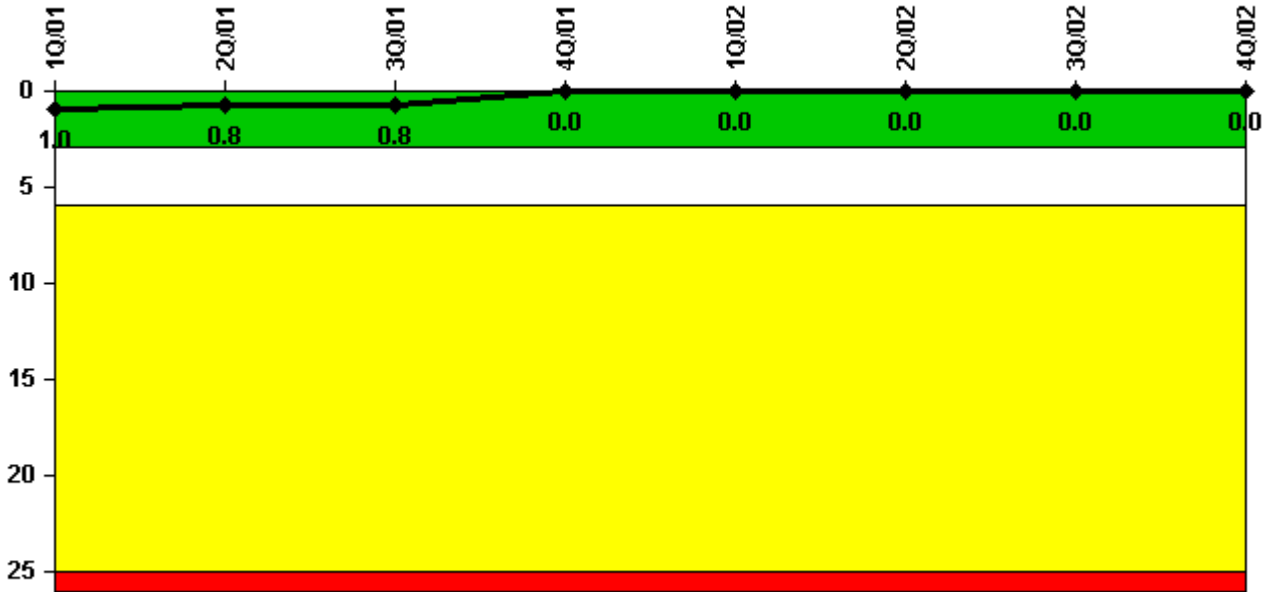


Cooper

4Q/2002 Performance Indicators

Licensee's General Comments: none

Unplanned Scrams per 7000 Critical Hrs



Thresholds: White > 3.0 Yellow > 6.0 Red > 25.0

Notes

Unplanned Scrams per 7000 Critical Hrs	1Q/01	2Q/01	3Q/01	4Q/01	1Q/02	2Q/02	3Q/02	4Q/02
Unplanned scrams	0	0	0	0	0	0	0	0
Critical hours	1873.9	2183.0	2208.0	863.3	2160.0	2057.0	2208.0	2209.0
Indicator value	1.0	0.8	0.8	0	0	0	0	0

Licensee Comments:

4Q/02: October 2002 - Daylight Savings

Scrams with Loss of Normal Heat Removal



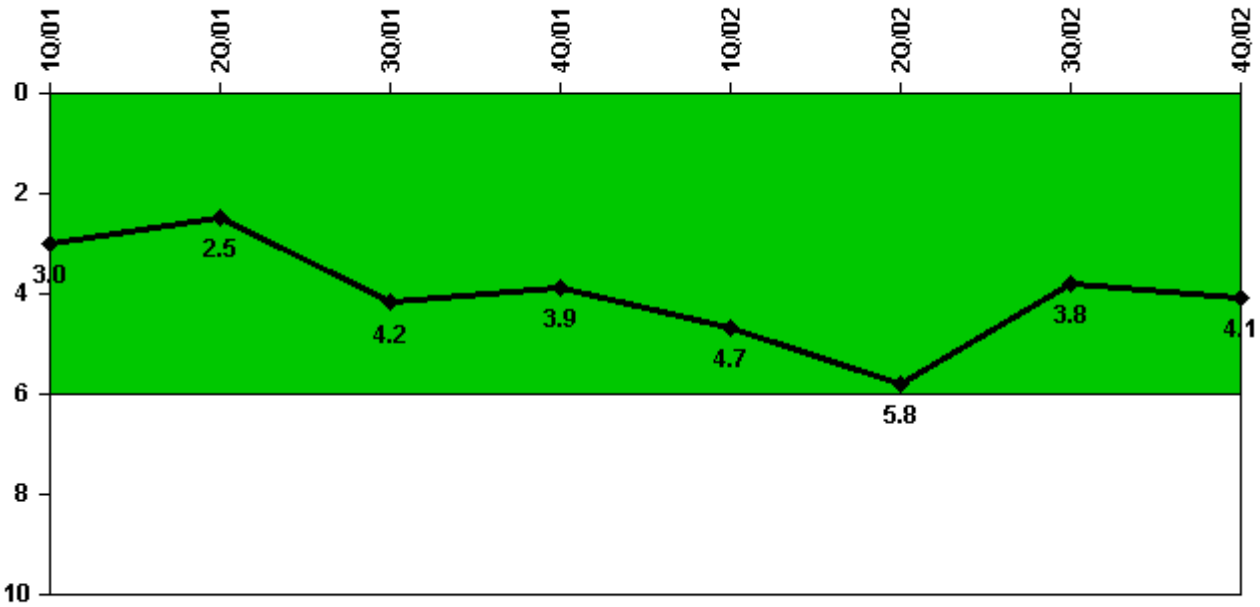
Thresholds: White > 2.0 Yellow > 10.0 Red > 20.0

Notes

Scrams with Loss of Normal Heat Removal	1Q/01	2Q/01	3Q/01	4Q/01	1Q/02	2Q/02	3Q/02	4Q/02
Scrams	0	0	0	0	0	0	0	0
Indicator value	0	0	0	0	0	0	0	0

Licensee Comments: none

Unplanned Power Changes per 7000 Critical Hrs



Thresholds: White > 6.0

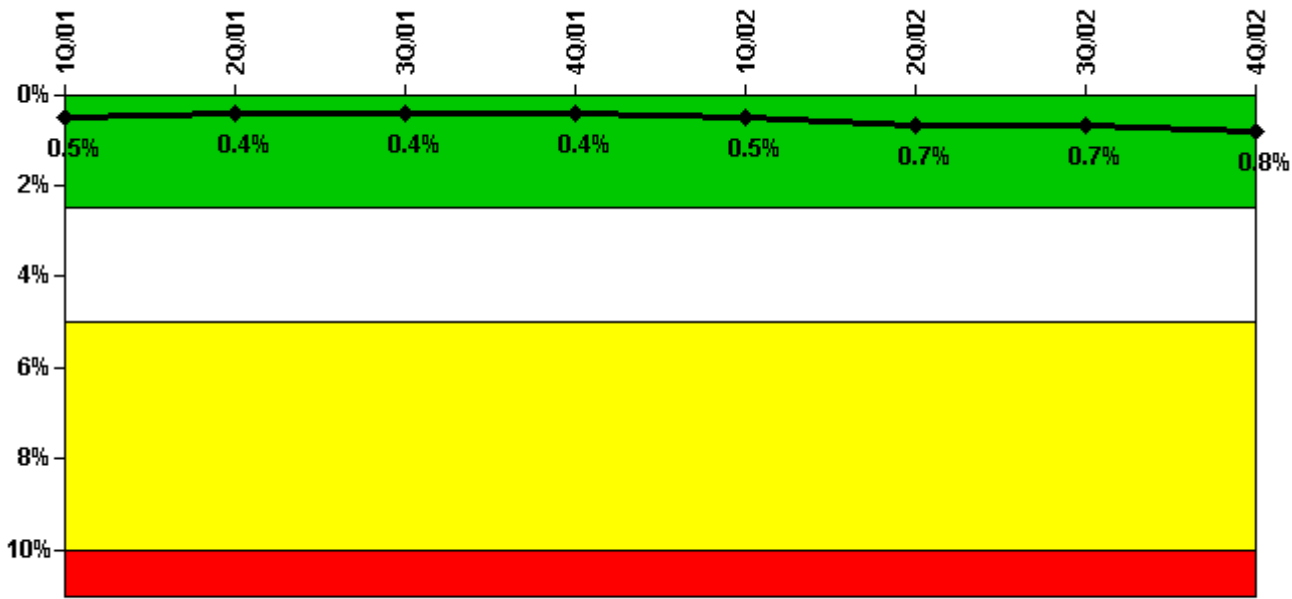
Notes

Unplanned Power Changes per 7000 Critical Hrs	1Q/01	2Q/01	3Q/01	4Q/01	1Q/02	2Q/02	3Q/02	4Q/02
Unplanned power changes	1.0	1.0	2.0	0	2.0	2.0	0	1.0
Critical hours	1873.9	2183.0	2208.0	863.3	2160.0	2057.0	2208.0	2209.0
Indicator value	3.0	2.5	4.2	3.9	4.7	5.8	3.8	4.1

Licensee Comments:

4Q/02: October 2002 - Daylight Savings, Circuit 6 of EE-PNL-CCP1B De-energized.

Safety System Unavailability, Emergency AC Power



Thresholds: White > 2.5% Yellow > 5.0% Red > 10.0%

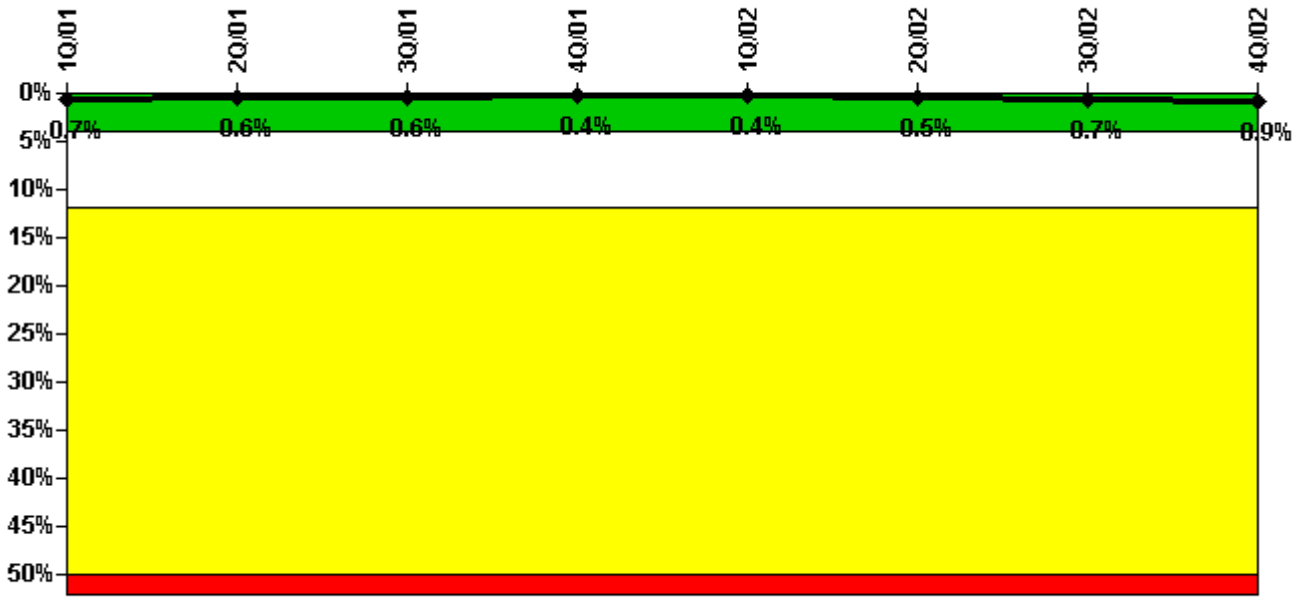
Notes

Safety System Unavailability, Emergency AC Power	1Q/01	2Q/01	3Q/01	4Q/01	1Q/02	2Q/02	3Q/02	4Q/02
Train 1								
Planned unavailable hours	11.20	0	0	23.58	37.48	10.52	0	14.75
Unplanned unavailable hours	0	2.00	7.86	6.31	0	0	6.27	4.62
Fault exposure hours	0	0	0	0	0	0	0	0
Effective Reset hours	0	0	0	0	0	0	0	0
Required hours	2160.00	2183.00	2208.00	2209.00	2160.00	2183.00	2208.00	2209.00
Train 2								
Planned unavailable hours	0	0	20.43	0	25.65	66.87	25.70	15.80
Unplanned unavailable hours	45.65	0	0	0	0	0	16.45	0
Fault exposure hours	0	0	0	0	0	0	0	0
Effective Reset hours	0	0	0	0	0	0	0	0
Required hours	2160.00	2183.00	2208.00	2209.00	2160.00	2183.00	2208.00	2209.00
Indicator value	0.5%	0.4%	0.4%	0.4%	0.5%	0.7%	0.7%	0.8%

Licensee Comments:

4Q/02: October 2002 - Daylight Savings

Safety System Unavailability, High Pressure Injection System (HPCI)



Thresholds: White > 4.0% Yellow > 12.0% Red > 50.0%

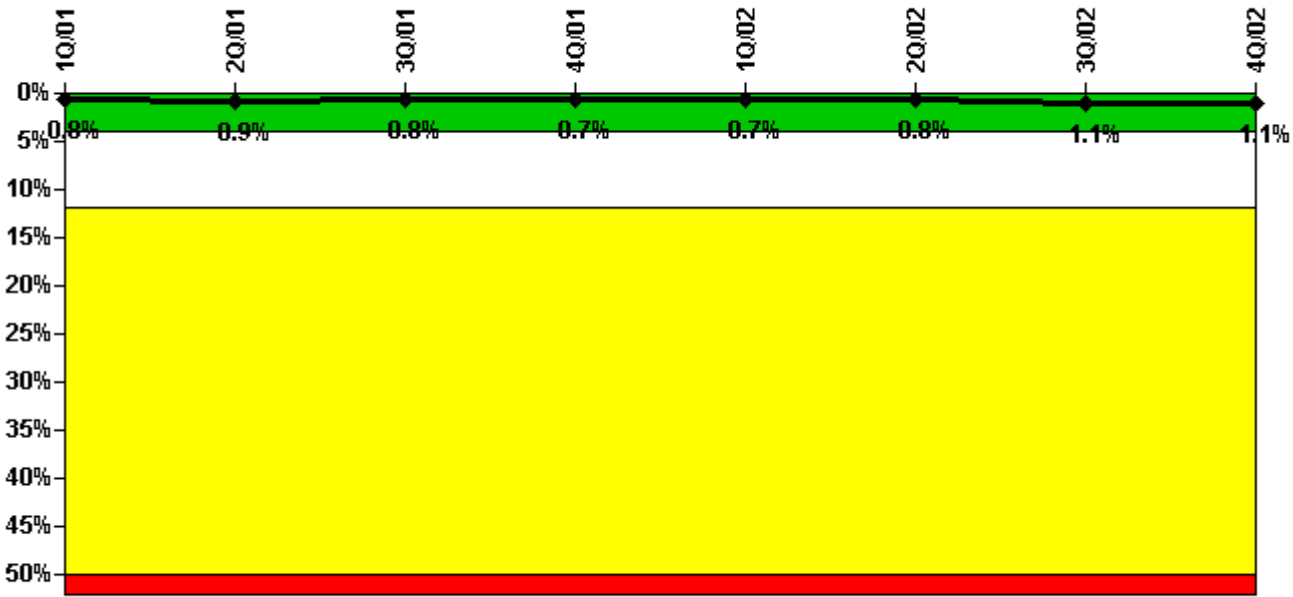
Notes

Safety System Unavailability, High Pressure Injection System (HPCI)	1Q/01	2Q/01	3Q/01	4Q/01	1Q/02	2Q/02	3Q/02	4Q/02
Train 1								
Planned unavailable hours	1.22	0.60	20.49	0.56	9.21	39.21	20.14	36.90
Unplanned unavailable hours	0	0	0	7.30	0	0	32.12	0
Fault exposure hours	0	0	0	0	0	0	0	0
Effective Reset hours	0	0	0	0	0	0	0	0
Required hours	1833.20	2183.00	2208.00	834.38	2160.00	2054.23	2208.00	2209.00
Indicator value	0.7%	0.6%	0.6%	0.4%	0.4%	0.5%	0.7%	0.9%

Licensee Comments:

4Q/02: October 2002 - Daylight Savings

Safety System Unavailability, Heat Removal System (RCIC)



Thresholds: White > 4.0% Yellow > 12.0% Red > 50.0%

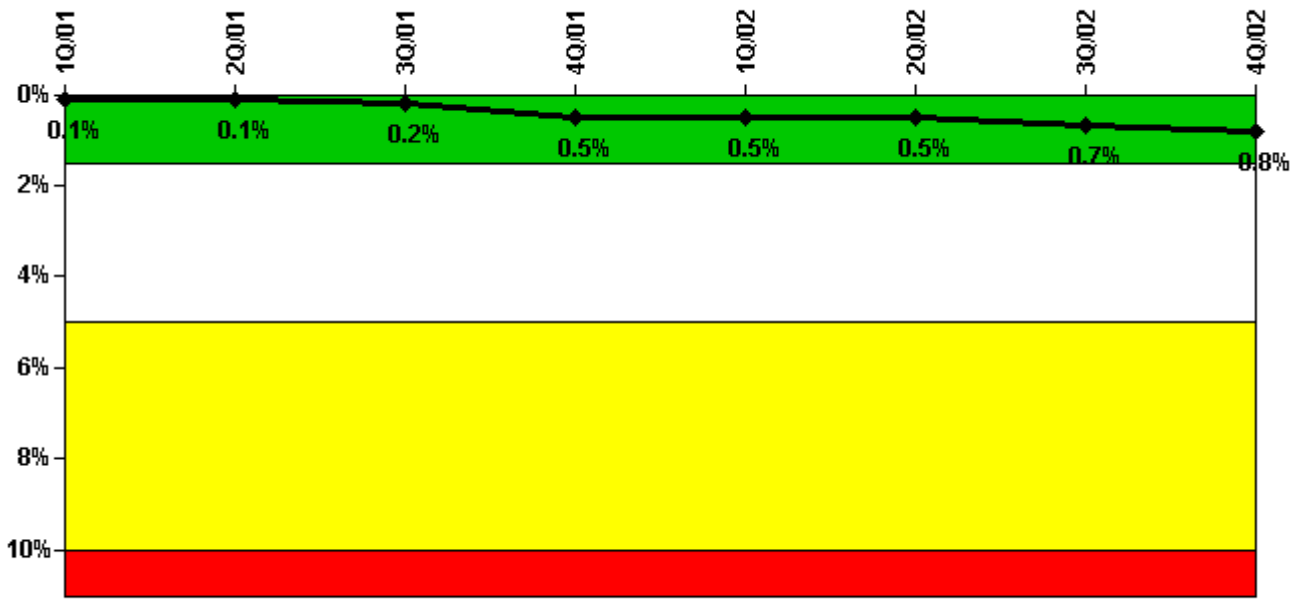
Notes

Safety System Unavailability, Heat Removal System (RCIC)	1Q/01	2Q/01	3Q/01	4Q/01	1Q/02	2Q/02	3Q/02	4Q/02
Train 1								
Planned unavailable hours	0.22	11.82	1.18	12.62	5.19	19.01	86.56	6.16
Unplanned unavailable hours	0	0	0	0	0	3.52	0	0
Fault exposure hours	0	0	0	0	0	0	0	0
Effective Reset hours	0	0	0	0	0	0	0	0
Required hours	1833.20	2183.00	2208.00	834.38	2160.00	2054.23	2208.00	2209.00
Indicator value	0.8%	0.9%	0.8%	0.7%	0.7%	0.8%	1.1%	1.1%

Licensee Comments:

4Q/02: October 2002 - Daylight Savings

Safety System Unavailability, Residual Heat Removal System



Thresholds: White > 1.5% Yellow > 5.0% Red > 10.0%

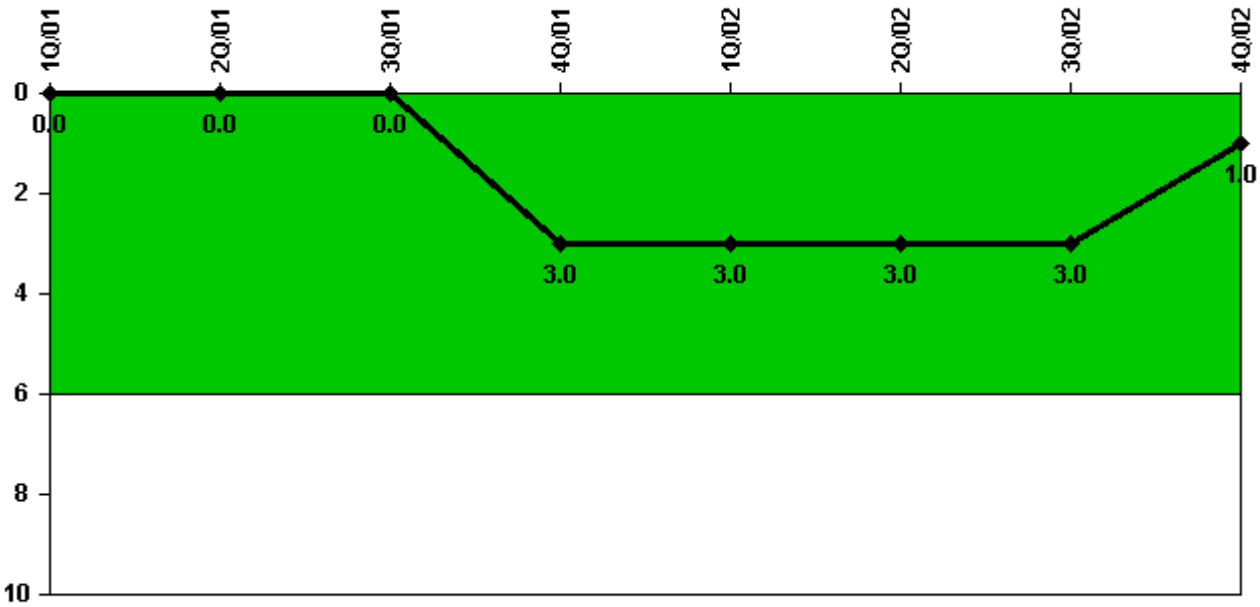
Notes

Safety System Unavailability, Residual Heat Removal System	1Q/01	2Q/01	3Q/01	4Q/01	1Q/02	2Q/02	3Q/02	4Q/02
Train 1								
Planned unavailable hours	1.32	0	33.89	10.28	0	0	79.95	0
Unplanned unavailable hours	0	2.00	0	0	0	0	0	0
Fault exposure hours	0	0	0	0	0	0	0	0
Effective Reset hours	0	0	0	0	0	0	0	0
Required hours	2080.00	2183.00	2208.00	2209.00	2160.00	2183.00	2208.00	2209.00
Train 2								
Planned unavailable hours	0.88	0	3.18	90.10	10.87	3.93	55.24	12.65
Unplanned unavailable hours	0	0	6.50	35.38	0	0	0	0
Fault exposure hours	0	0	0	0	0	0	0	0
Effective Reset hours	0	0	0	0	0	0	0	0
Required hours	2080.00	2183.00	2208.00	2209.00	2160.00	2183.00	2208.00	2209.00
Indicator value	0.1%	0.1%	0.2%	0.5%	0.5%	0.5%	0.7%	0.8%

Licensee Comments:

4Q/02: October 2002 - Daylight Savings

Safety System Functional Failures (BWR)



Thresholds: White > 6.0

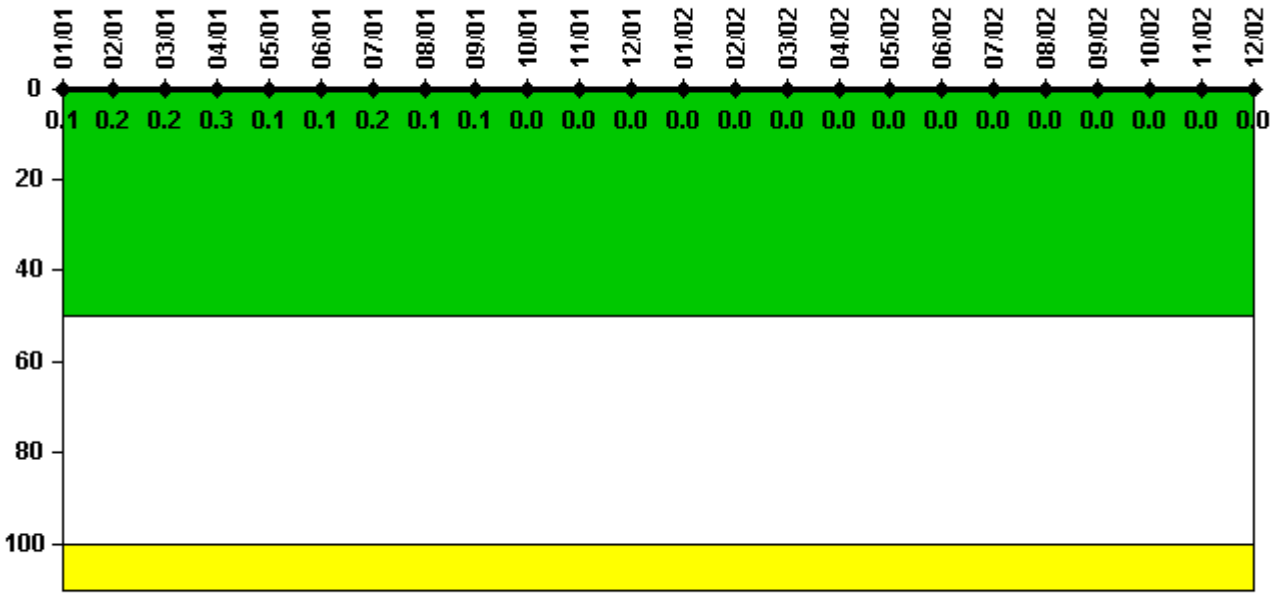
Notes

Safety System Functional Failures (BWR)	1Q/01	2Q/01	3Q/01	4Q/01	1Q/02	2Q/02	3Q/02	4Q/02
Safety System Functional Failures	0	0	0	3	0	0	0	1
Indicator value	0	0	0	3	3	3	3	1

Licensee Comments:

4Q/02: November 2002 - LER 2002-001

Reactor Coolant System Activity



Thresholds: White > 50.0 Yellow > 100.0

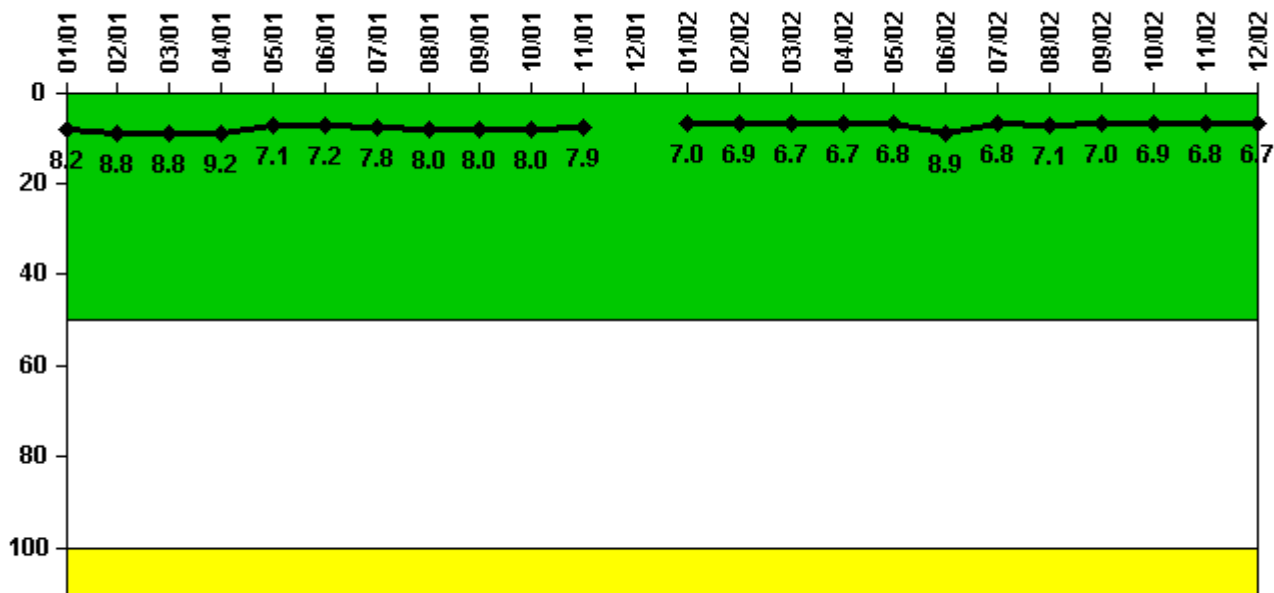
Notes

Reactor Coolant System Activity	1/01	2/01	3/01	4/01	5/01	6/01	7/01	8/01	9/01	10/01	11/01	12/01
Maximum activity	0.000283	0.000329	0.000427	0.000560	0.000209	0.000198	0.000371	0.000184	0.000201	0.000037	0.000028	0.000018
Technical specification limit	0.2	0.2	0.2	0.2	0.2	0.2	0.2	0.2	0.2	0.2	0.2	0.2
Indicator value	0.1	0.2	0.2	0.3	0.1	0.1	0.2	0.1	0.1	0	0	0

Reactor Coolant System Activity	1/02	2/02	3/02	4/02	5/02	6/02	7/02	8/02	9/02	10/02	11/02	12/02
Maximum activity	0.000081	0.000069	0.000011	0.000013	0.000029	0.000028	0.000025	0.000035	0.000012	0.000027	0.000016	0.000010
Technical specification limit	0.2	0.2	0.2	0.2	0.2	0.2	0.2	0.2	0.2	0.2	0.2	0.2
Indicator value	0	0	0	0	0	0	0	0	0	0	0	0

Licensee Comments: none

Reactor Coolant System Leakage



Thresholds: White > 50.0 Yellow > 100.0

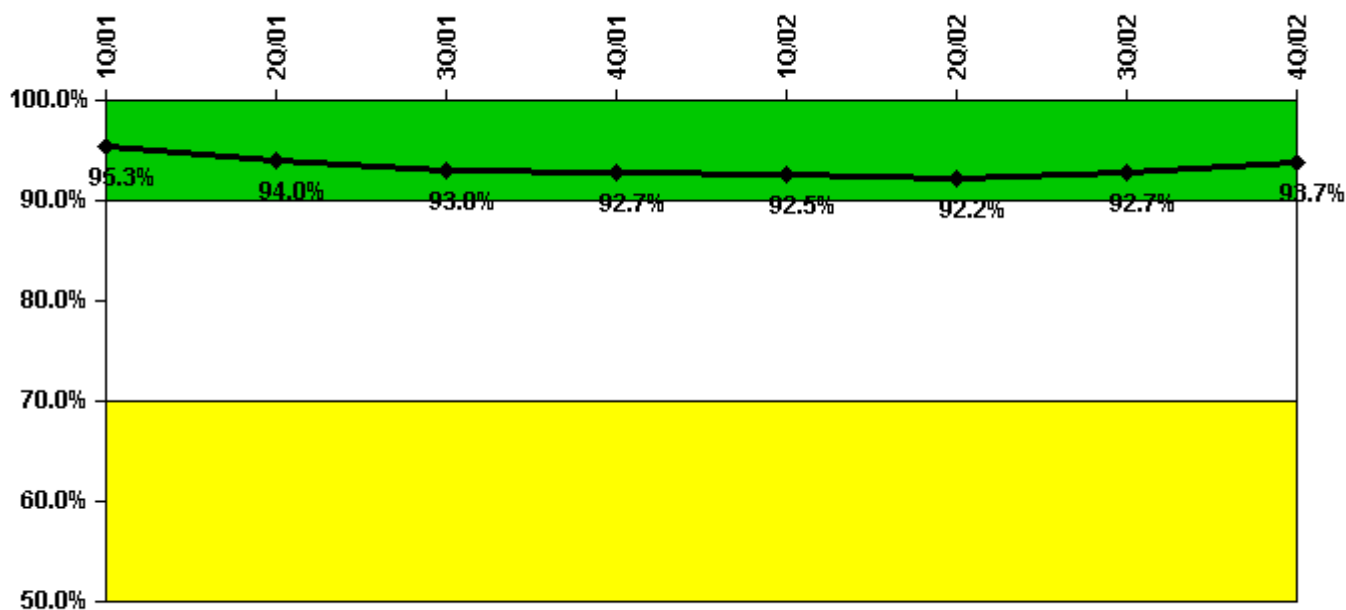
Notes

Reactor Coolant System Leakage	1/01	2/01	3/01	4/01	5/01	6/01	7/01	8/01	9/01	10/01	11/01	12/01
Maximum leakage	2.464	2.630	2.626	2.760	2.121	2.146	2.340	2.400	2.410	2.400	2.360	N/A
Technical specification limit	30.0	30.0	30.0	30.0	30.0	30.0	30.0	30.0	30.0	30.0	30.0	30.0
Indicator value	8.2	8.8	8.8	9.2	7.1	7.2	7.8	8.0	8.0	8.0	7.9	N/A

Reactor Coolant System Leakage	1/02	2/02	3/02	4/02	5/02	6/02	7/02	8/02	9/02	10/02	11/02	12/02
Maximum leakage	2.100	2.070	2.010	2.020	2.030	2.680	2.030	2.140	2.090	2.070	2.030	2.020
Technical specification limit	30.0	30.0	30.0	30.0	30.0	30.0	30.0	30.0	30.0	30.0	30.0	30.0
Indicator value	7.0	6.9	6.7	6.7	6.8	8.9	6.8	7.1	7.0	6.9	6.8	6.7

Licensee Comments: none

Drill/Exercise Performance



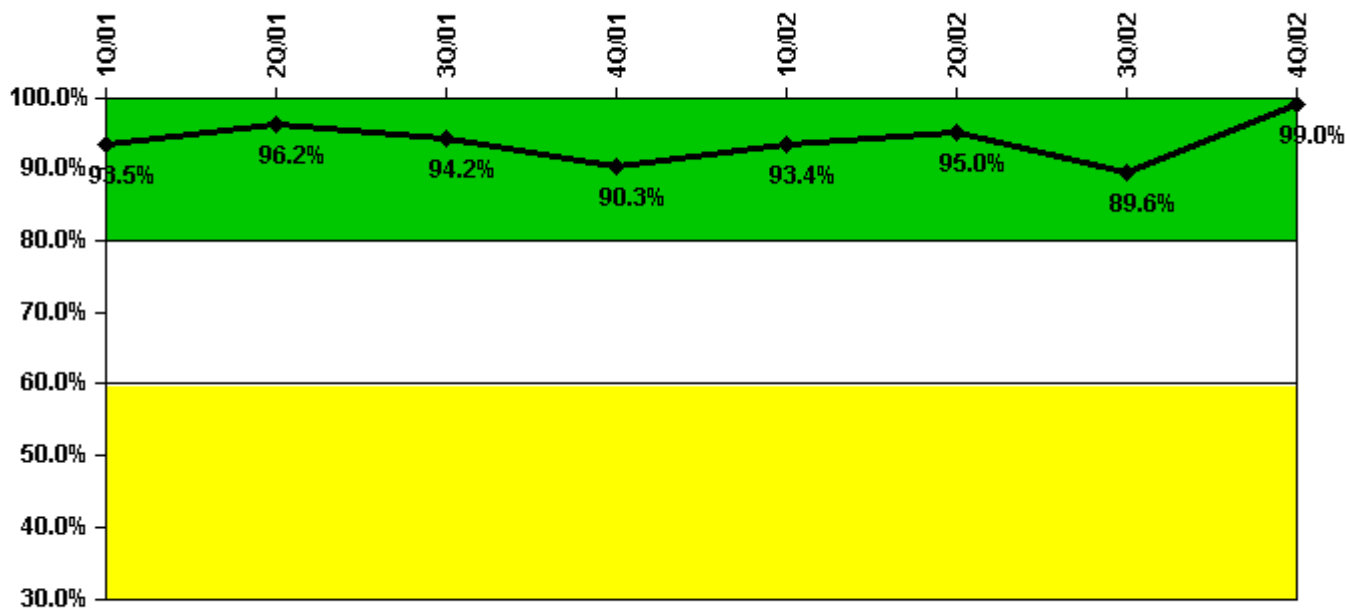
Thresholds: White < 90.0% Yellow < 70.0%

Notes

Drill/Exercise Performance	1Q/01	2Q/01	3Q/01	4Q/01	1Q/02	2Q/02	3Q/02	4Q/02
Successful opportunities	8.0	32.0	18.0	11.0	46.0	46.0	17.0	89.0
Total opportunities	8.0	37.0	21.0	11.0	50.0	48.0	18.0	92.0
Indicator value	95.3%	94.0%	93.0%	92.7%	92.5%	92.2%	92.7%	93.7%

Licensee Comments: none

ERO Drill Participation



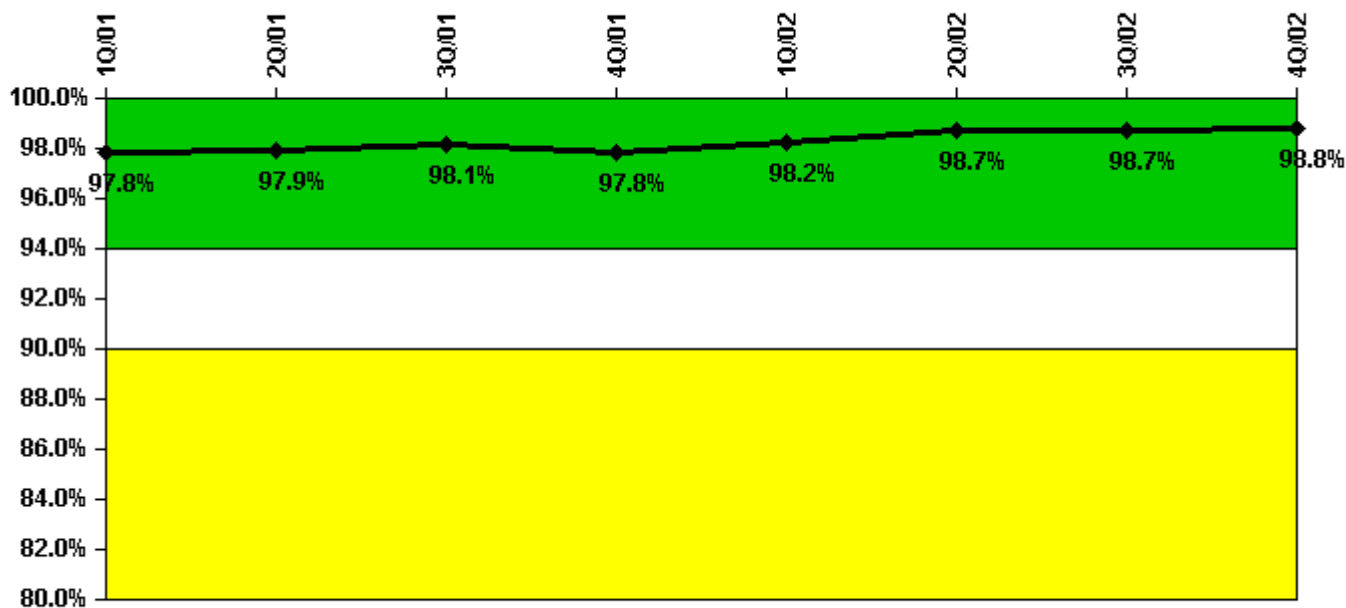
Thresholds: White < 80.0% Yellow < 60.0%

Notes

ERO Drill Participation	1Q/01	2Q/01	3Q/01	4Q/01	1Q/02	2Q/02	3Q/02	4Q/02
Participating Key personnel	100.0	102.0	98.0	84.0	85.0	95.0	86.0	98.0
Total Key personnel	107.0	106.0	104.0	93.0	91.0	100.0	96.0	99.0
Indicator value	93.5%	96.2%	94.2%	90.3%	93.4%	95.0%	89.6%	99.0%

Licensee Comments: none

Alert & Notification System



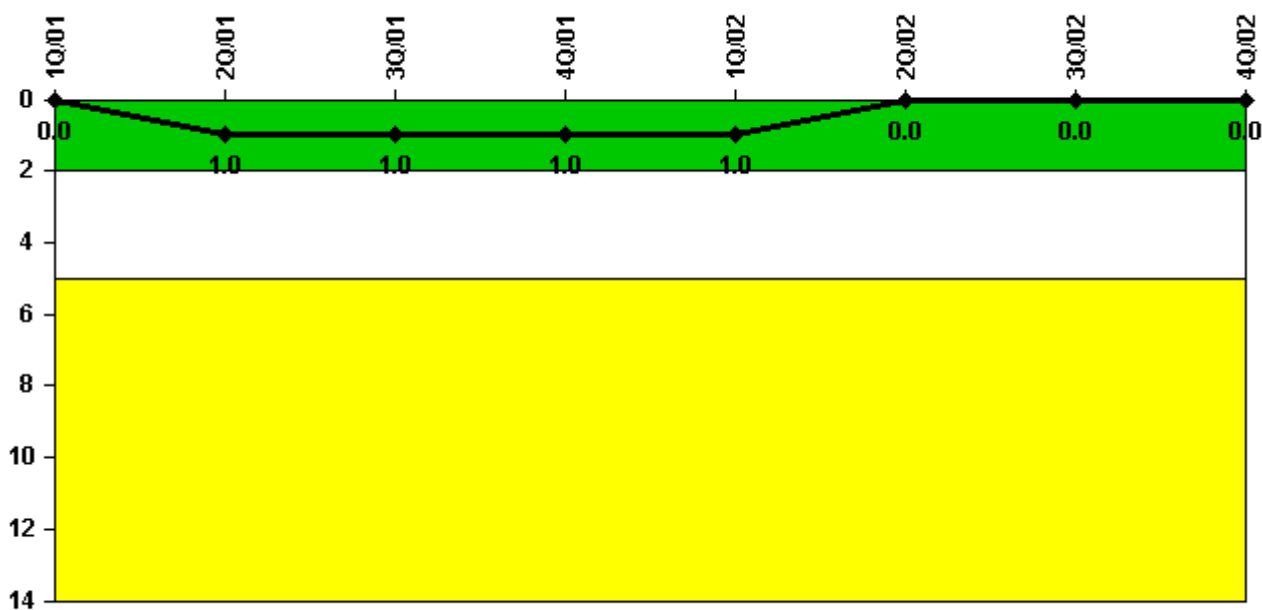
Thresholds: White < 94.0% Yellow < 90.0%

Notes

Alert & Notification System	1Q/01	2Q/01	3Q/01	4Q/01	1Q/02	2Q/02	3Q/02	4Q/02
Successful siren-tests	140	165	141	164	143	144	141	165
Total sirens-tests	144	168	144	168	144	144	144	168
Indicator value	97.8%	97.9%	98.1%	97.8%	98.2%	98.7%	98.7%	98.8%

Licensee Comments: none

Occupational Exposure Control Effectiveness



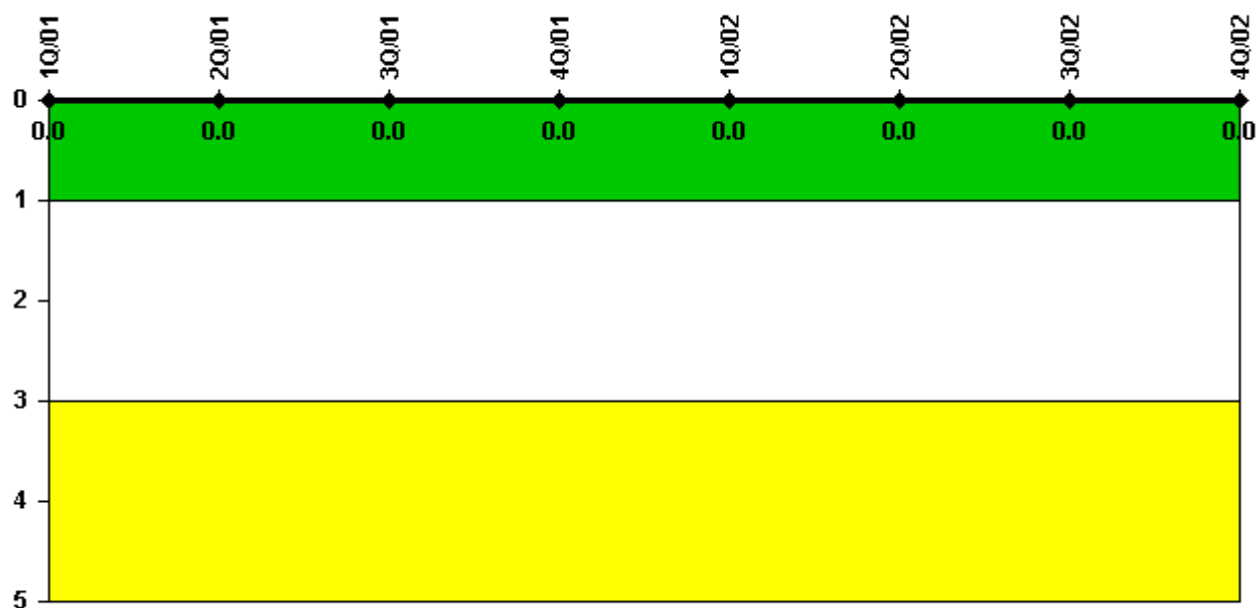
Thresholds: White > 2.0 Yellow > 5.0

Notes

Occupational Exposure Control Effectiveness	1Q/01	2Q/01	3Q/01	4Q/01	1Q/02	2Q/02	3Q/02	4Q/02
High radiation area occurrences	0	1	0	0	0	0	0	0
Very high radiation area occurrences	0	0	0	0	0	0	0	0
Unintended exposure occurrences	0	0	0	0	0	0	0	0
Indicator value	0	1	1	1	1	0	0	0

Licensee Comments: none

RETS/ODCM Radiological Effluent



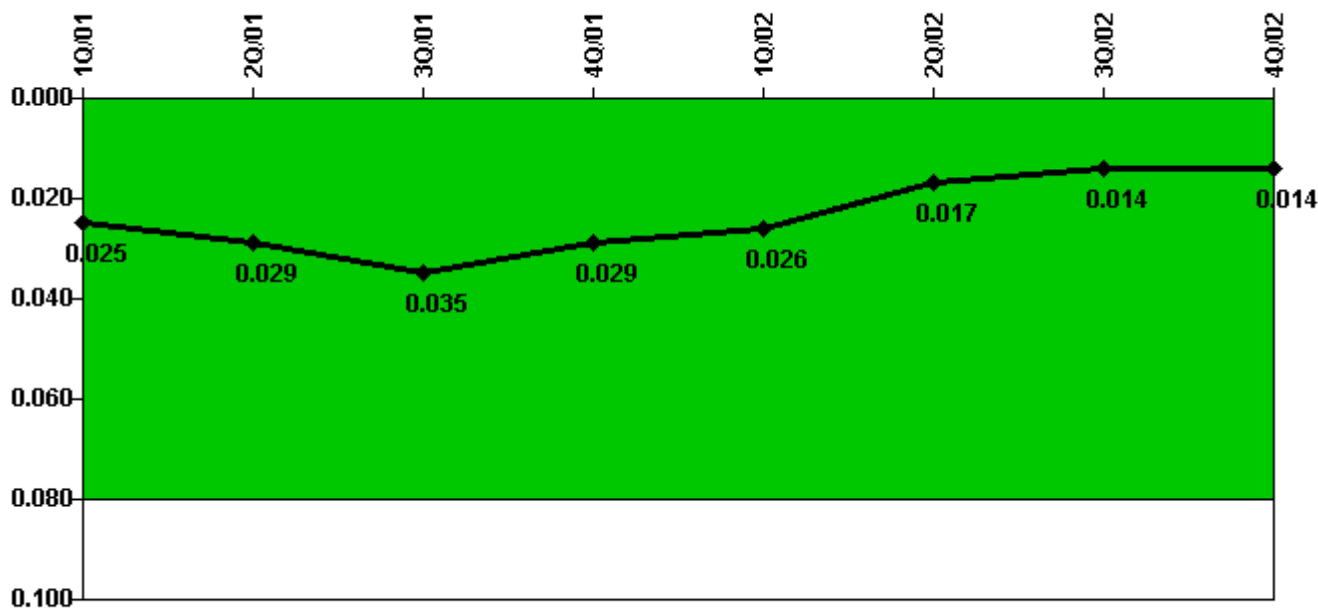
Thresholds: White > 1.0 Yellow > 3.0

Notes

RETS/ODCM Radiological Effluent	1Q/01	2Q/01	3Q/01	4Q/01	1Q/02	2Q/02	3Q/02	4Q/02
RETS/ODCM occurrences	0	0	0	0	0	0	0	0
Indicator value	0	0	0	0	0	0	0	0

Licensee Comments: none

Protected Area Security Performance Index



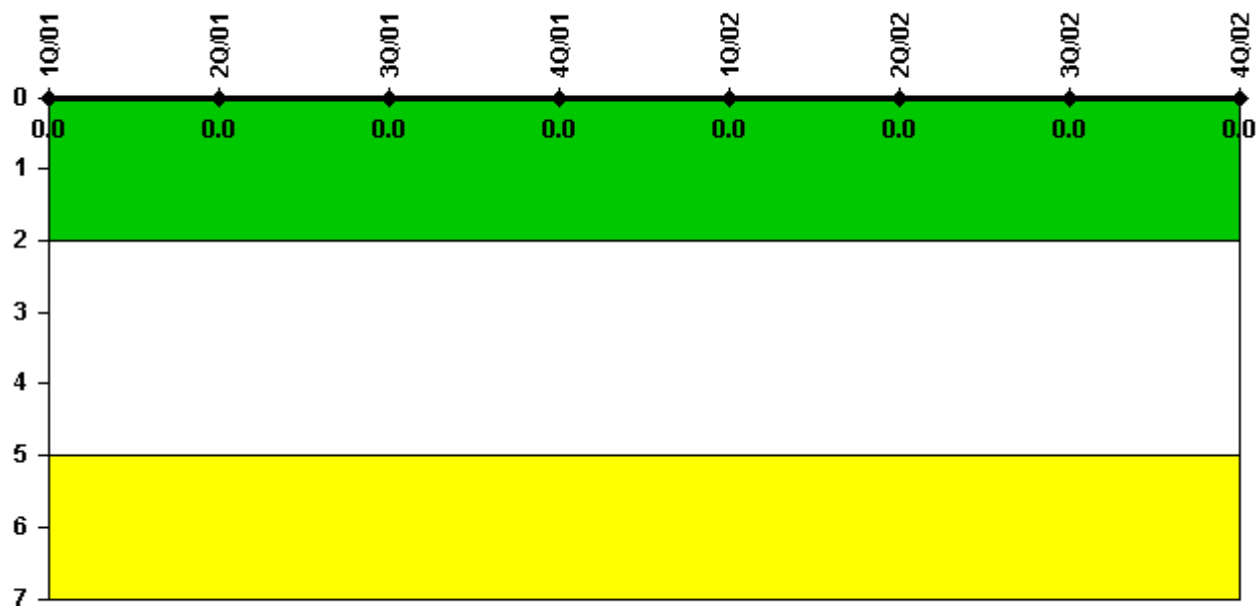
Thresholds: White > 0.080

Notes

Protected Area Security Performance Index	1Q/01	2Q/01	3Q/01	4Q/01	1Q/02	2Q/02	3Q/02	4Q/02
IDS compensatory hours	150.12	205.80	218.81	35.68	78.53	25.13	19.00	41.18
CCTV compensatory hours	3.0	29.8	2.3	0	19.5	0.7	113.2	0.4
IDS normalization factor	1.30	1.30	1.30	1.30	1.30	1.30	1.30	1.30
CCTV normalization factor	1.1	1.1	1.1	1.1	1.1	1.1	1.1	1.1
Index Value	0.025	0.029	0.035	0.029	0.026	0.017	0.014	0.014

Licensee Comments: none

Personnel Screening Program



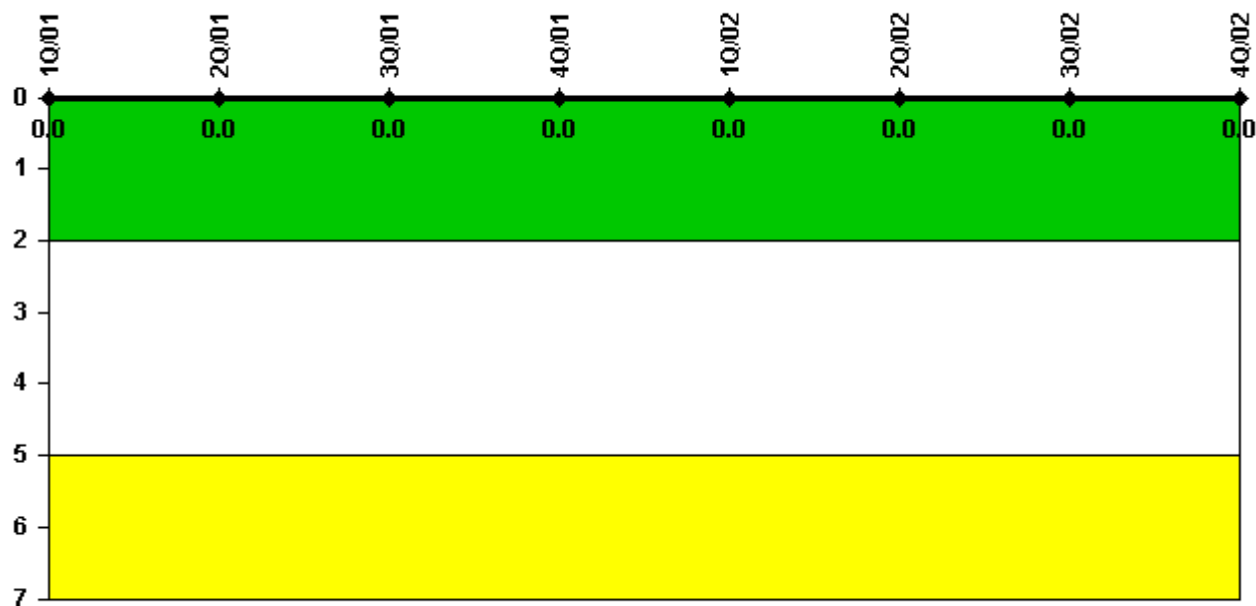
Thresholds: White > 2.0 Yellow > 5.0

Notes

Personnel Screening Program	1Q/01	2Q/01	3Q/01	4Q/01	1Q/02	2Q/02	3Q/02	4Q/02
Program failures	0	0	0	0	0	0	0	0
Indicator value	0	0	0	0	0	0	0	0

Licensee Comments: none

FFD/Personnel Reliability



Thresholds: White > 2.0 Yellow > 5.0

Notes

FFD/Personnel Reliability	1Q/01	2Q/01	3Q/01	4Q/01	1Q/02	2Q/02	3Q/02	4Q/02
Program Failures	0	0	0	0	0	0	0	0
Indicator value	0	0	0	0	0	0	0	0

Licensee Comments: none

▲ [PI Summary](#) | [Inspection Findings Summary](#) | [Reactor Oversight Process](#)

Last Modified: January 30, 2003