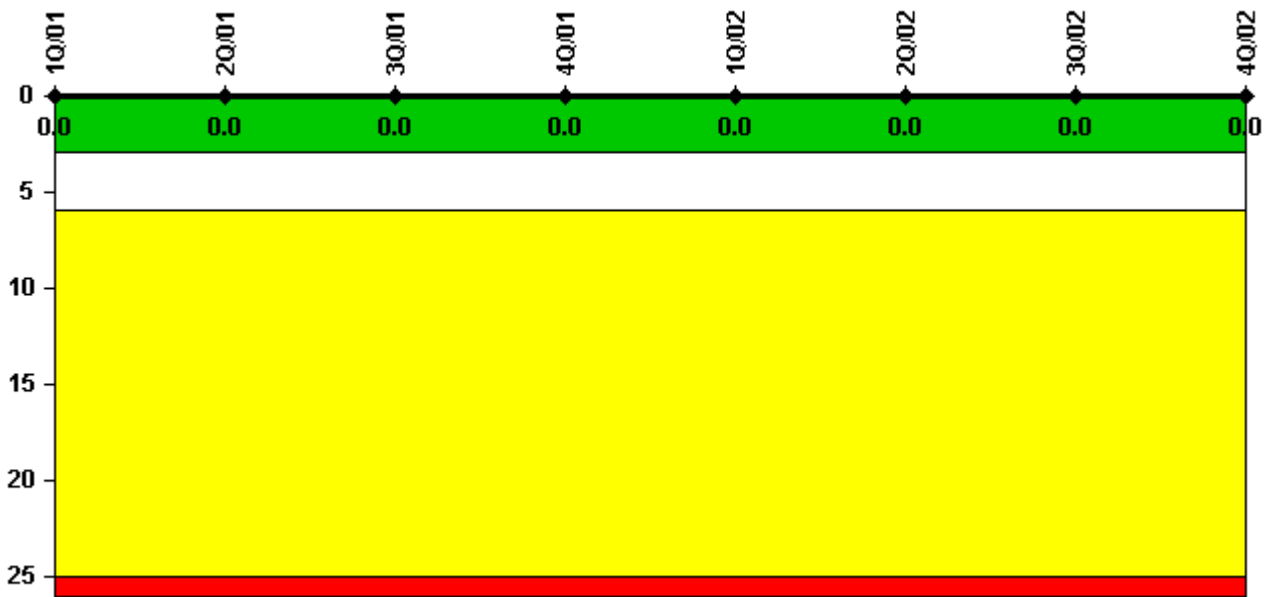


## Calvert Cliffs 2

### 4Q/2002 Performance Indicators

Licensee's General Comments: none

#### Unplanned Scrams per 7000 Critical Hrs



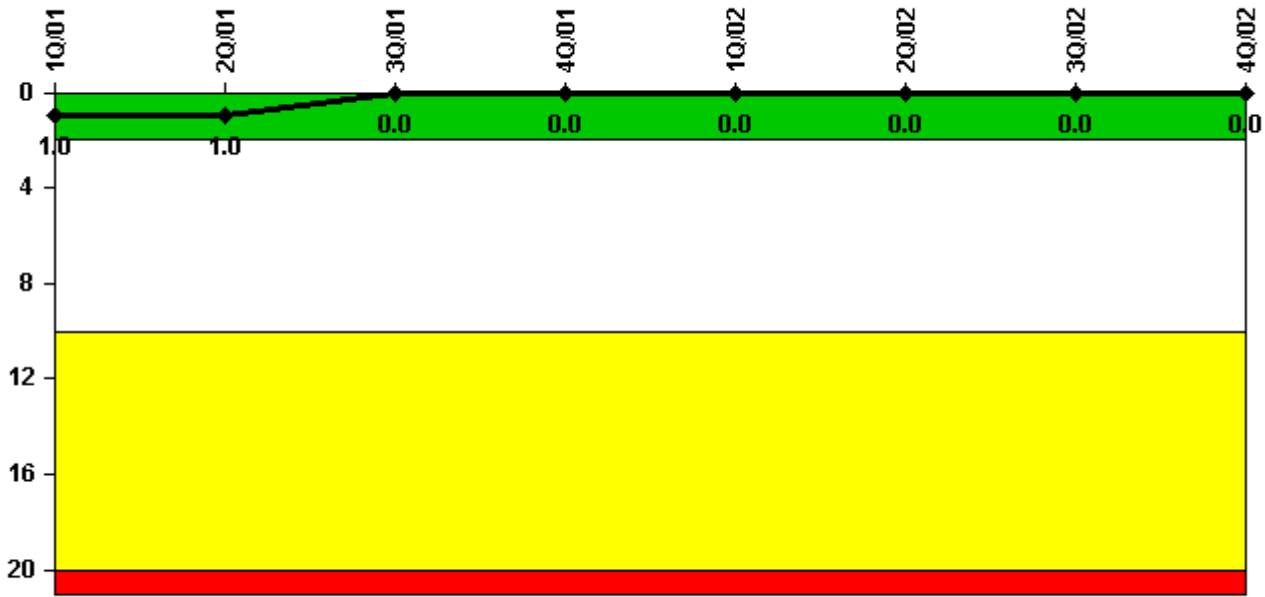
**Thresholds: White > 3.0 Yellow > 6.0 Red > 25.0**

#### Notes

Unplanned Scrams per 7000 Critical Hrs	1Q/01	2Q/01	3Q/01	4Q/01	1Q/02	2Q/02	3Q/02	4Q/02
Unplanned scrams	0	0	0	0	0	0	0	0
Critical hours	1800.0	1163.4	2208.0	2162.9	2160.0	2183.0	2208.0	2209.0
Indicator value	0	0	0	0	0	0	0	0

Licensee Comments: none

### Scrams with Loss of Normal Heat Removal



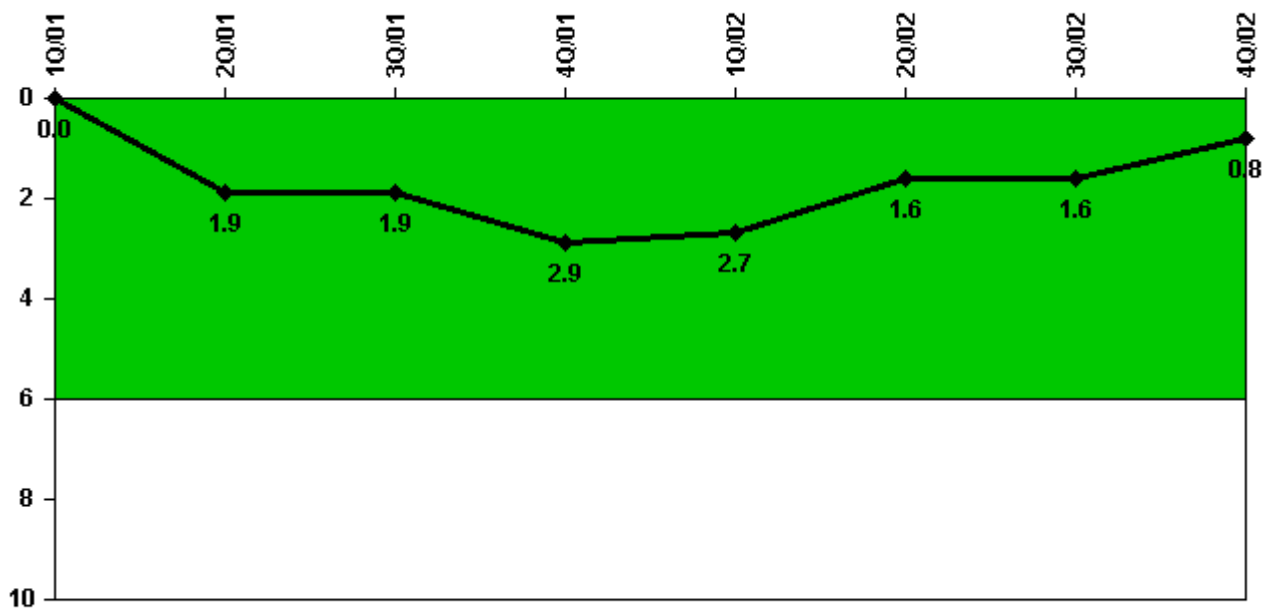
Thresholds: White > 2.0 Yellow > 10.0 Red > 20.0

#### Notes

Scrams with Loss of Normal Heat Removal	1Q/01	2Q/01	3Q/01	4Q/01	1Q/02	2Q/02	3Q/02	4Q/02
Scrams	0	0	0	0	0	0	0	0
Indicator value	1.0	1.0	0	0	0	0	0	0

Licensee Comments: none

### Unplanned Power Changes per 7000 Critical Hrs



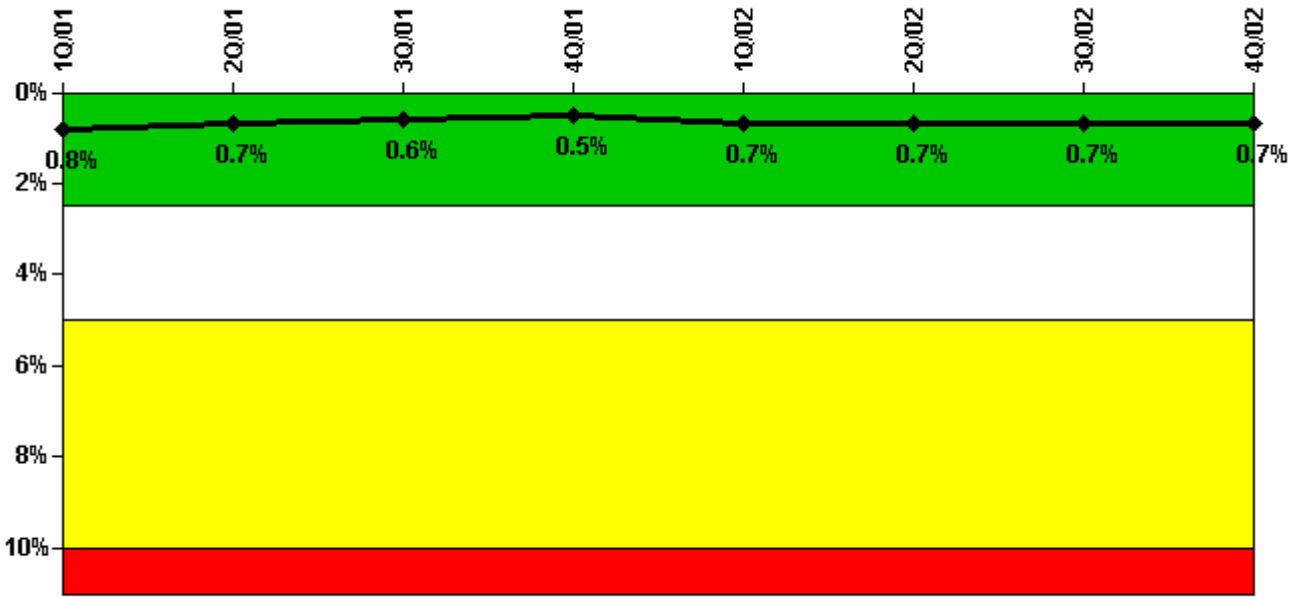
Thresholds: White > 6.0

#### Notes

Unplanned Power Changes per 7000 Critical Hrs	1Q/01	2Q/01	3Q/01	4Q/01	1Q/02	2Q/02	3Q/02	4Q/02
Unplanned power changes	0	2.0	0	1.0	0	1.0	0	0
Critical hours	1800.0	1163.4	2208.0	2162.9	2160.0	2183.0	2208.0	2209.0
Indicator value	0	1.9	1.9	2.9	2.7	1.6	1.6	0.8

Licensee Comments: none

### Safety System Unavailability, Emergency AC Power



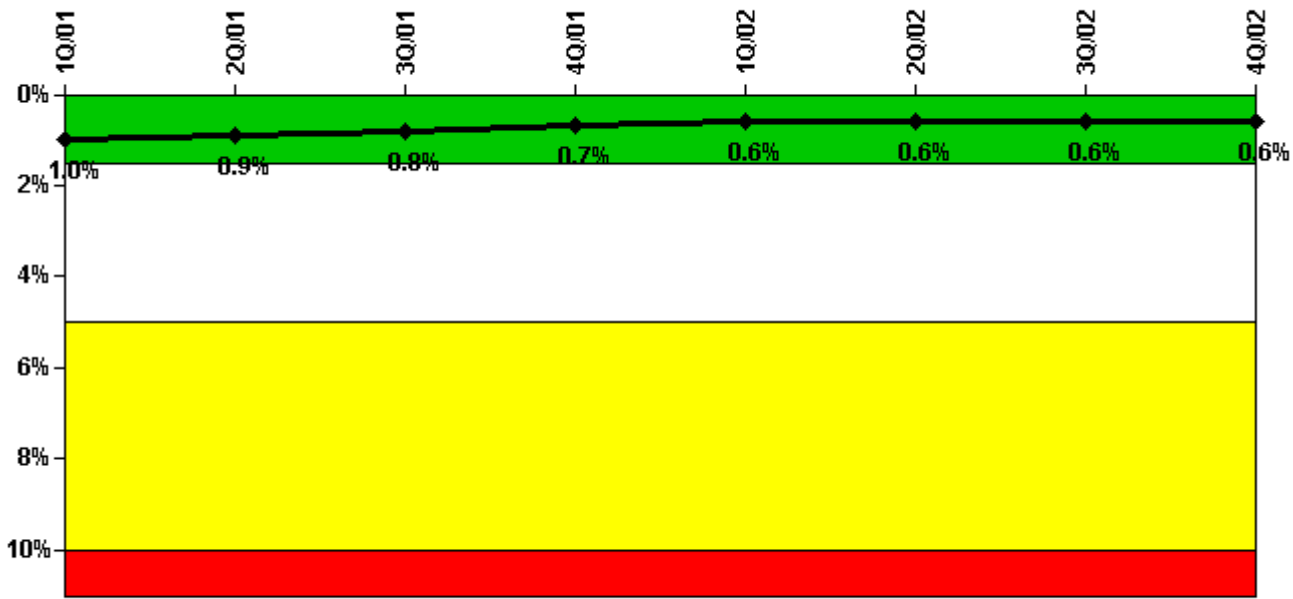
Thresholds: White > 2.5% Yellow > 5.0% Red > 10.0%

#### Notes

Safety System Unavailability, Emergency AC Power	1Q/01	2Q/01	3Q/01	4Q/01	1Q/02	2Q/02	3Q/02	4Q/02
<b>Train 1</b>								
Planned unavailable hours	15.33	0.83	34.50	0.50	1.33	13.50	0	0
Unplanned unavailable hours	0	0	17.27	9.27	143.98	0	0	0
Fault exposure hours	0	0	0	0	0	0	0	0
Effective Reset hours	0	0	0	0	0	0	0	0
Required hours	2160.00	2183.00	2208.00	2209.00	2160.00	2183.00	2208.00	2209.00
<b>Train 2</b>								
Planned unavailable hours	37.40	0	0	0.25	0	2.70	13.27	6.30
Unplanned unavailable hours	0.25	0	0	0	12.25	0	0	0
Fault exposure hours	0	0	0	0	0	0	0	0
Effective Reset hours	0	0	0	0	0	0	0	0
Required hours	2160.00	2183.00	2208.00	2209.00	2160.00	2183.00	2208.00	2209.00
<b>Indicator value</b>	<b>0.8%</b>	<b>0.7%</b>	<b>0.6%</b>	<b>0.5%</b>	<b>0.7%</b>	<b>0.7%</b>	<b>0.7%</b>	<b>0.7%</b>

Licensee Comments: none

### Safety System Unavailability, High Pressure Injection System (HPSI)



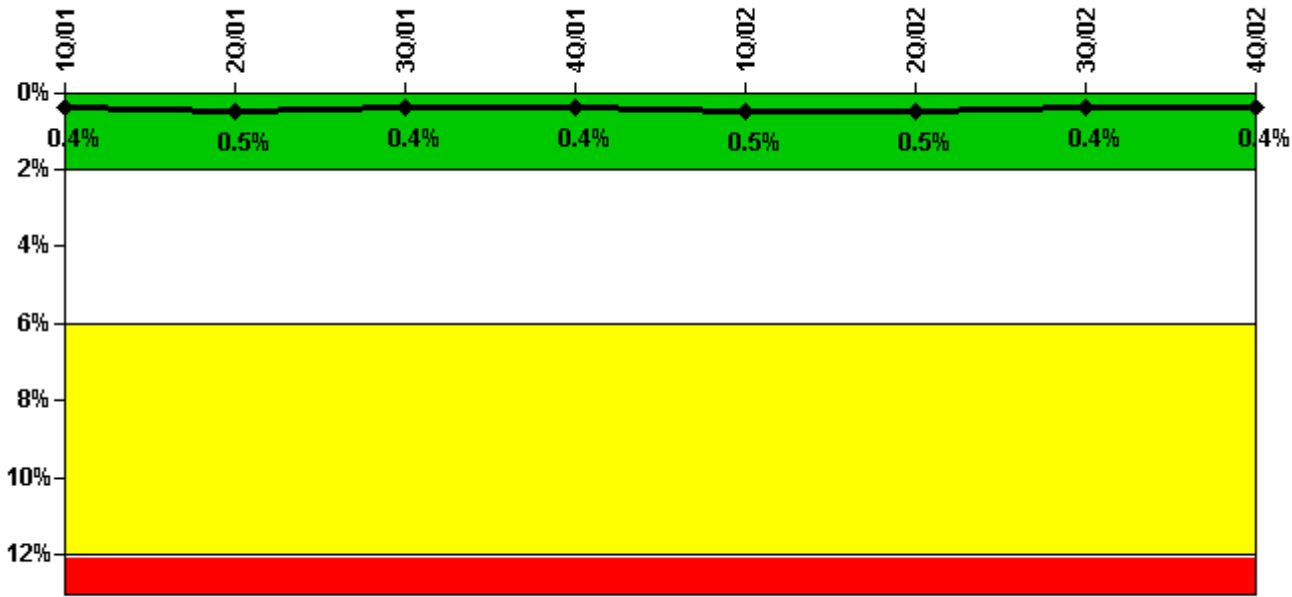
Thresholds: White > 1.5% Yellow > 5.0% Red > 10.0%

#### Notes

Safety System Unavailability, High Pressure Injection System (HPSI)	1Q/01	2Q/01	3Q/01	4Q/01	1Q/02	2Q/02	3Q/02	4Q/02
<b>Train 1</b>								
Planned unavailable hours	36.34	1.54	0.27	9.94	20.17	0.30	2.42	25.99
Unplanned unavailable hours	0	0	0	9.27	0	11.70	0	0.77
Fault exposure hours	0	0	0	0	0	0	0	0
Effective Reset hours	0	0	0	0	0	0	0	0
Required hours	1800.00	1163.30	2208.00	2162.90	2160.00	2183.00	2208.00	2209.00
<b>Train 2</b>								
Planned unavailable hours	19.27	1.54	17.47	0.54	17.45	0.30	34.49	1.23
Unplanned unavailable hours	0	0	0	0.47	0	0	0	0
Fault exposure hours	0	0	0	0	0	0	0	0
Effective Reset hours	0	0	0	0	0	0	0	0
Required hours	1800.00	1163.30	2208.00	2162.90	2160.00	2183.00	2208.00	2209.00
Indicator value	1.0%	0.9%	0.8%	0.7%	0.6%	0.6%	0.6%	0.6%

Licensee Comments: none

### Safety System Unavailability, Heat Removal System (AFW)



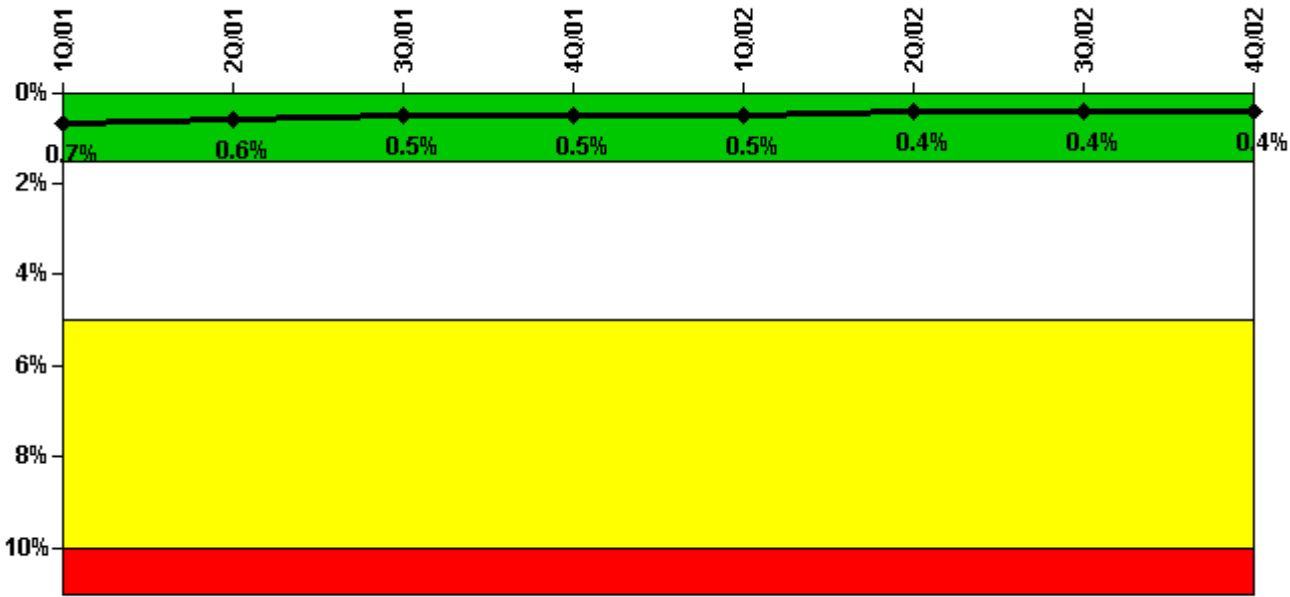
Thresholds: White > 2.0% Yellow > 6.0% Red > 12.0%

#### Notes

Safety System Unavailability, Heat Removal System (AFW)	1Q/01	2Q/01	3Q/01	4Q/01	1Q/02	2Q/02	3Q/02	4Q/02
<b>Train 1</b>								
Planned unavailable hours	2.33	18.04	8.91	0.08	22.42	2.20	0	0.40
Unplanned unavailable hours	0	0	6.58	0	0	0	0	0.37
Fault exposure hours	0	0	0	0	0	0	0	0
Effective Reset hours	0	0	0	0	0	0	0	0
Required hours	1800.00	1163.30	2208.00	2162.90	2160.00	2183.00	2208.00	2209.00
<b>Train 2</b>								
Planned unavailable hours	2.33	22.28	13.67	0.17	22.42	2.70	0.47	1.07
Unplanned unavailable hours	0	0	6.58	0	0	0	0	0.90
Fault exposure hours	0	0	0	0	0	0	0	0
Effective Reset hours	0	0	0	0	0	0	0	0
Required hours	1800.00	1163.30	2208.00	2162.90	2160.00	2183.00	2208.00	2209.00
<b>Train 3</b>								
Planned unavailable hours	0	31.95	38.92	13.07	0	4.60	0	0
Unplanned unavailable hours	0	0	0.58	0	0	0	23.38	0
Fault exposure hours	0	0	0	0	0	0	0	0
Effective Reset hours	0	0	0	0	0	0	0	0
Required hours	1800.00	1163.30	2208.00	2162.90	2160.00	2183.00	2208.00	2209.00
<b>Indicator value</b>	<b>0.4%</b>	<b>0.5%</b>	<b>0.4%</b>	<b>0.4%</b>	<b>0.5%</b>	<b>0.5%</b>	<b>0.4%</b>	<b>0.4%</b>

Licensee Comments: none

### Safety System Unavailability, Residual Heat Removal System



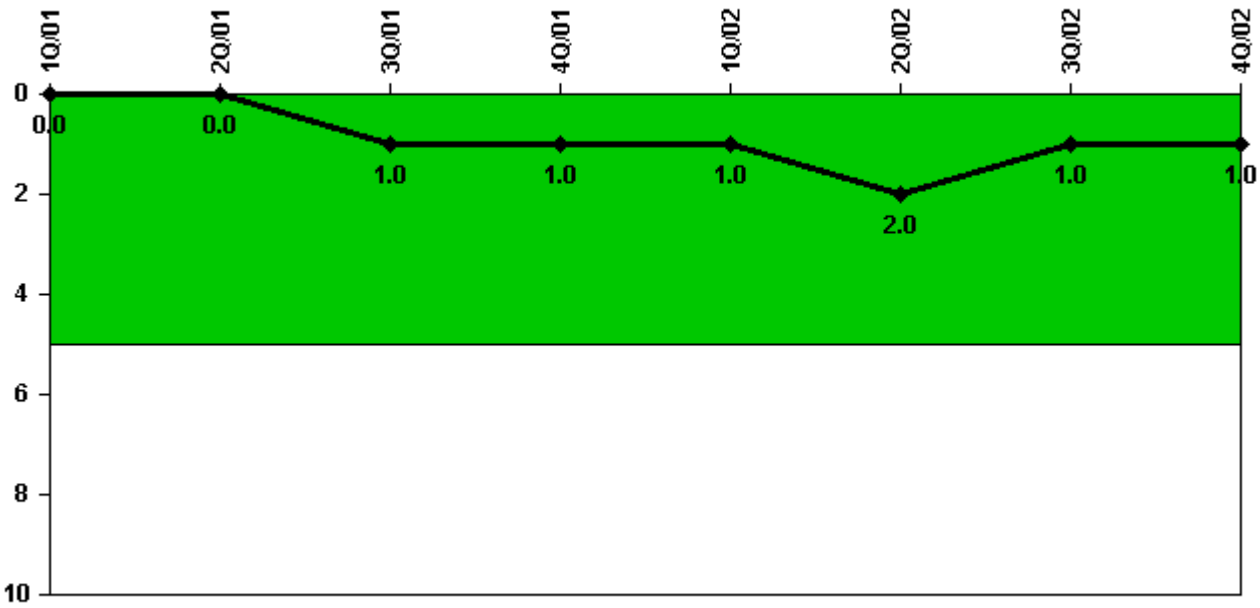
Thresholds: White > 1.5% Yellow > 5.0% Red > 10.0%

#### Notes

Safety System Unavailability, Residual Heat Removal System	1Q/01	2Q/01	3Q/01	4Q/01	1Q/02	2Q/02	3Q/02	4Q/02
<b>Train 1</b>								
Planned unavailable hours	0	0	0	0	0	0	0	0
Unplanned unavailable hours	0	0	0	0	0	0	0	0
Fault exposure hours	0	0	0	0	0	0	0	0
Effective Reset hours	0	0	0	0	0	0	0	0
Required hours	336.80	935.40	0	19.30	0	0	0	0
<b>Train 2</b>								
Planned unavailable hours	0	0	0	0	0	0	0	0
Unplanned unavailable hours	0	0	0	0	0	0	0	0
Fault exposure hours	0	0	0	0	0	0	0	0
Effective Reset hours	0	0	0	0	0	0	0	0
Required hours	336.80	935.40	0	19.30	0	0	0	0
<b>Train 3</b>								
Planned unavailable hours	34.49	4.24	2.62	25.68	21.59	18.10	2.49	3.66
Unplanned unavailable hours	0	0	0	9.27	0	11.70	1.92	0
Fault exposure hours	0	0	0	0	0	0	0	0
Effective Reset hours	0	0	0	0	0	0	0	0
Required hours	1823.20	1247.60	2208.00	2189.70	2160.00	2183.00	2208.00	2209.00
<b>Train 4</b>								
Planned unavailable hours	28.40	4.52	22.54	1.91	18.47	6.40	42.50	3.06
Unplanned unavailable hours	0	0	0	0	0	0	3.15	0
Fault exposure hours	0	0	0	0	0	0	0	0
Effective Reset hours	0	0	0	0	0	0	0	0
Required hours	1823.20	1247.60	2208.00	2189.70	2160.00	2183.00	2208.00	2209.00
<b>Indicator value</b>	<b>0.7%</b>	<b>0.6%</b>	<b>0.5%</b>	<b>0.5%</b>	<b>0.5%</b>	<b>0.4%</b>	<b>0.4%</b>	<b>0.4%</b>

Licensee Comments: none

### Safety System Functional Failures (PWR)



Thresholds: White > 5.0

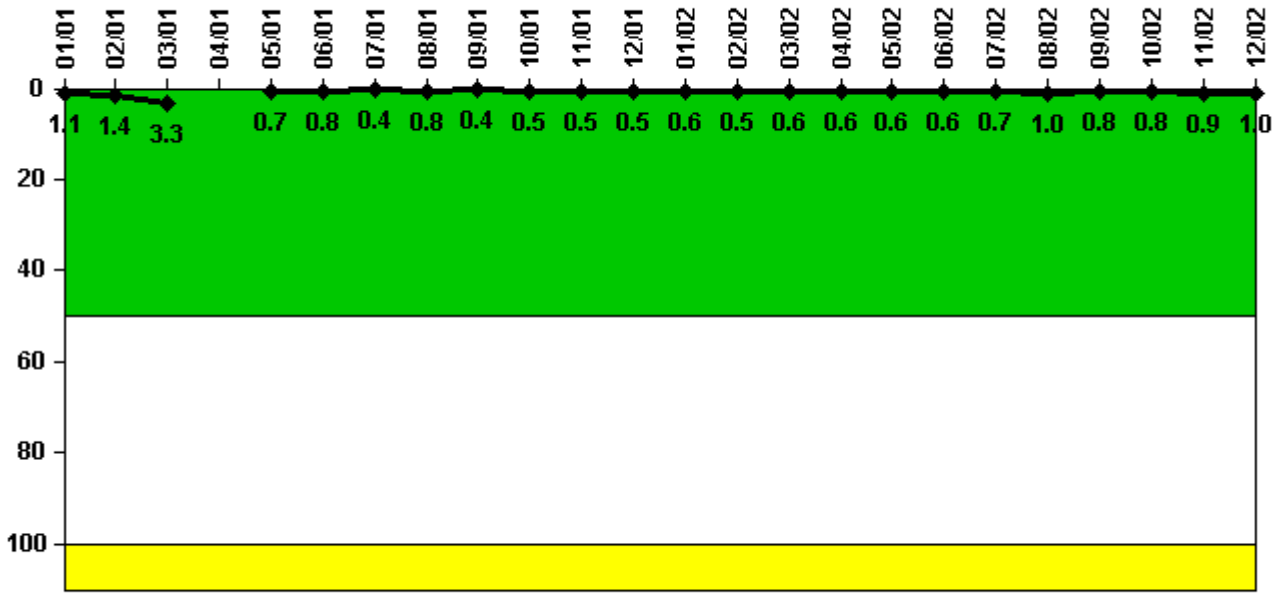
#### Notes

Safety System Functional Failures (PWR)	1Q/01	2Q/01	3Q/01	4Q/01	1Q/02	2Q/02	3Q/02	4Q/02
Safety System Functional Failures	0	0	1	0	0	1	0	0
Indicator value	0	0	1	1	1	2	1	1

Licensee Comments: none



### Reactor Coolant System Activity



Thresholds: White > 50.0 Yellow > 100.0

#### Notes

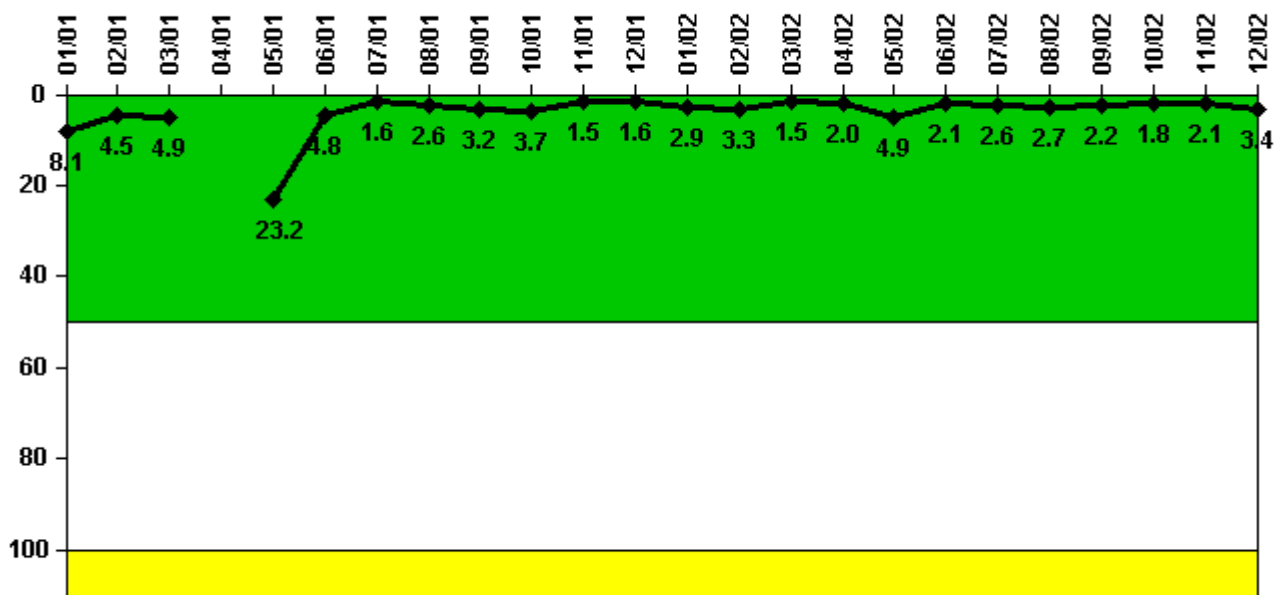
Reactor Coolant System Activity	1/01	2/01	3/01	4/01	5/01	6/01	7/01	8/01	9/01	10/01	11/01	12/01
Maximum activity	0.011200	0.013600	0.032800	N/A	0.007460	0.007800	0.003780	0.007770	0.004230	0.004620	0.004720	0.005170
Technical specification limit	1.0	1.0	1.0	1.0	1.0	1.0	1.0	1.0	1.0	1.0	1.0	1.0
Indicator value	1.1	1.4	3.3	N/A	0.7	0.8	0.4	0.8	0.4	0.5	0.5	0.5

Reactor Coolant System Activity	1/02	2/02	3/02	4/02	5/02	6/02	7/02	8/02	9/02	10/02	11/02	12/02
Maximum activity	0.005730	0.005470	0.005600	0.005600	0.006010	0.006200	0.006550	0.009630	0.007900	0.007980	0.008700	0.009630
Technical specification limit	1.0	1.0	1.0	1.0	1.0	1.0	1.0	1.0	1.0	1.0	1.0	1.0
Indicator value	0.6	0.5	0.6	0.6	0.6	0.6	0.7	1.0	0.8	0.8	0.9	1.0

Licensee Comments: none

### Reactor Coolant System Leakage



Thresholds: White > 50.0 Yellow > 100.0

#### Notes

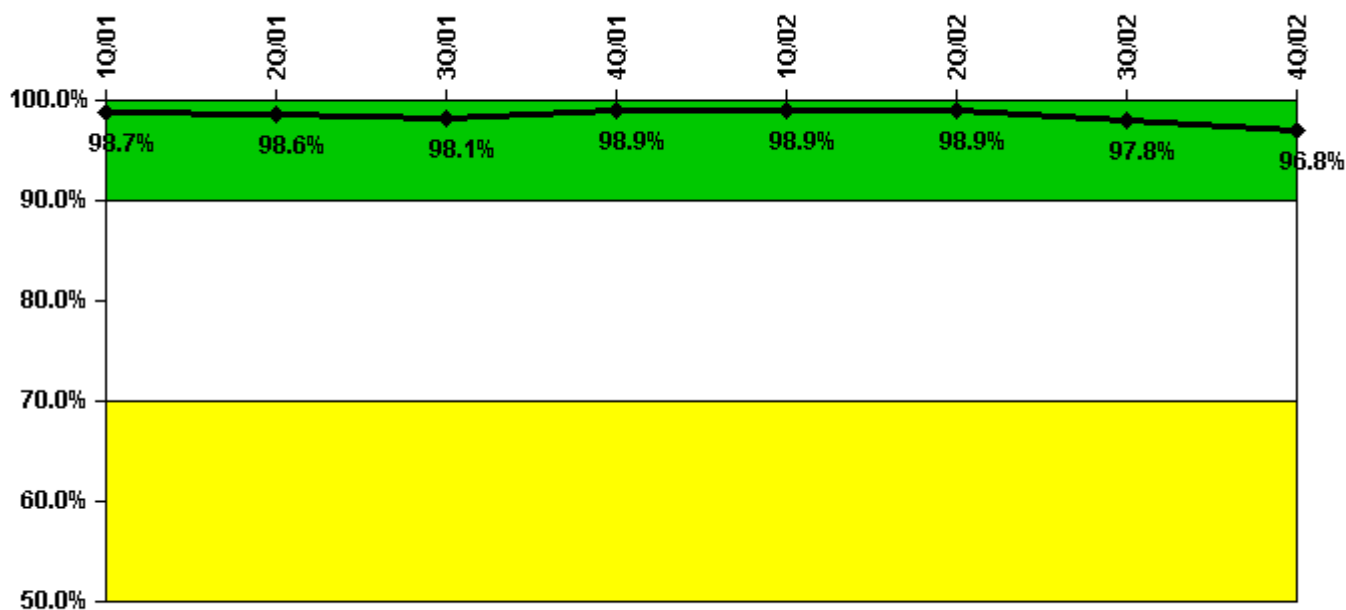
Reactor Coolant System Leakage	1/01	2/01	3/01	4/01	5/01	6/01	7/01	8/01	9/01	10/01	11/01	12/01
Maximum leakage	0.814	0.450	0.488	N/A	2.320	0.480	0.155	0.260	0.317	0.370	0.150	0.160
Technical specification limit	10.0	10.0	10.0	10.0	10.0	10.0	10.0	10.0	10.0	10.0	10.0	10.0
Indicator value	8.1	4.5	4.9	N/A	23.2	4.8	1.6	2.6	3.2	3.7	1.5	1.6

Reactor Coolant System Leakage	1/02	2/02	3/02	4/02	5/02	6/02	7/02	8/02	9/02	10/02	11/02	12/02
Maximum leakage	0.289	0.331	0.145	0.200	0.486	0.211	0.262	0.273	0.220	0.177	0.210	0.338
Technical specification limit	10.0	10.0	10.0	10.0	10.0	10.0	10.0	10.0	10.0	10.0	10.0	10.0
Indicator value	2.9	3.3	1.5	2.0	4.9	2.1	2.6	2.7	2.2	1.8	2.1	3.4

Licensee Comments: none

### Drill/Exercise Performance



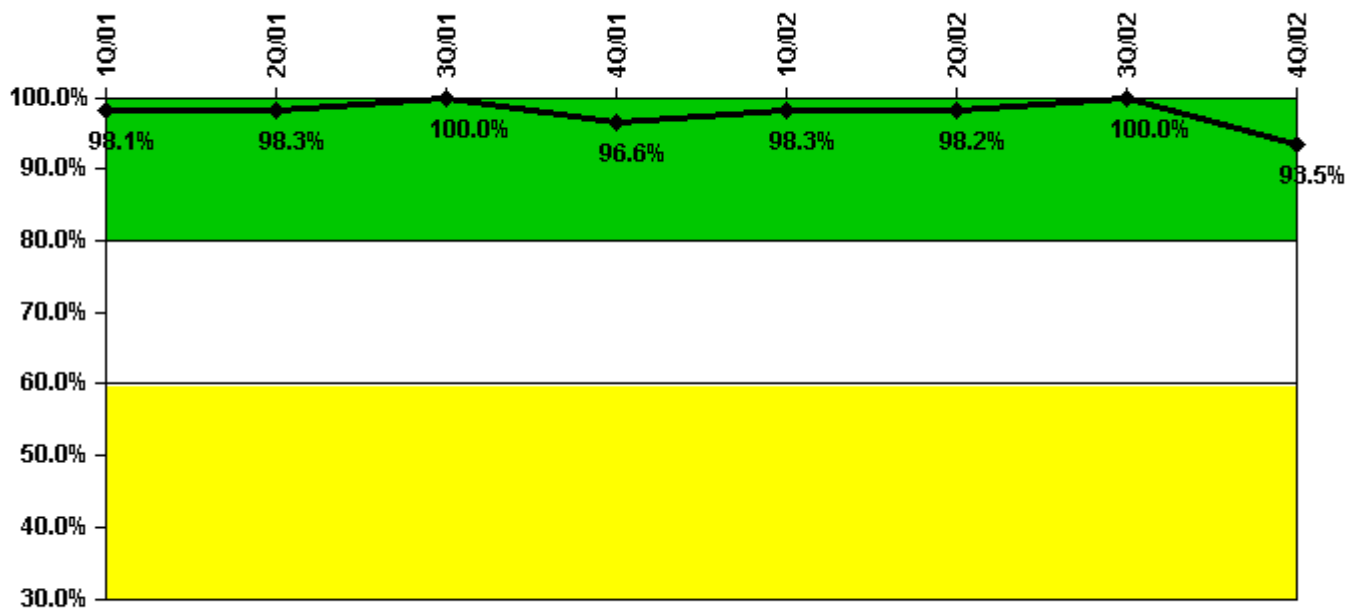
Thresholds: White < 90.0% Yellow < 70.0%

### Notes

Drill/Exercise Performance	1Q/01	2Q/01	3Q/01	4Q/01	1Q/02	2Q/02	3Q/02	4Q/02
Successful opportunities	11.0	22.0	27.0	25.0	14.0	8.0	34.0	39.0
Total opportunities	11.0	22.0	28.0	25.0	14.0	8.0	37.0	41.0
Indicator value	98.7%	98.6%	98.1%	98.9%	98.9%	98.9%	97.8%	96.8%

Licensee Comments: none

### ERO Drill Participation



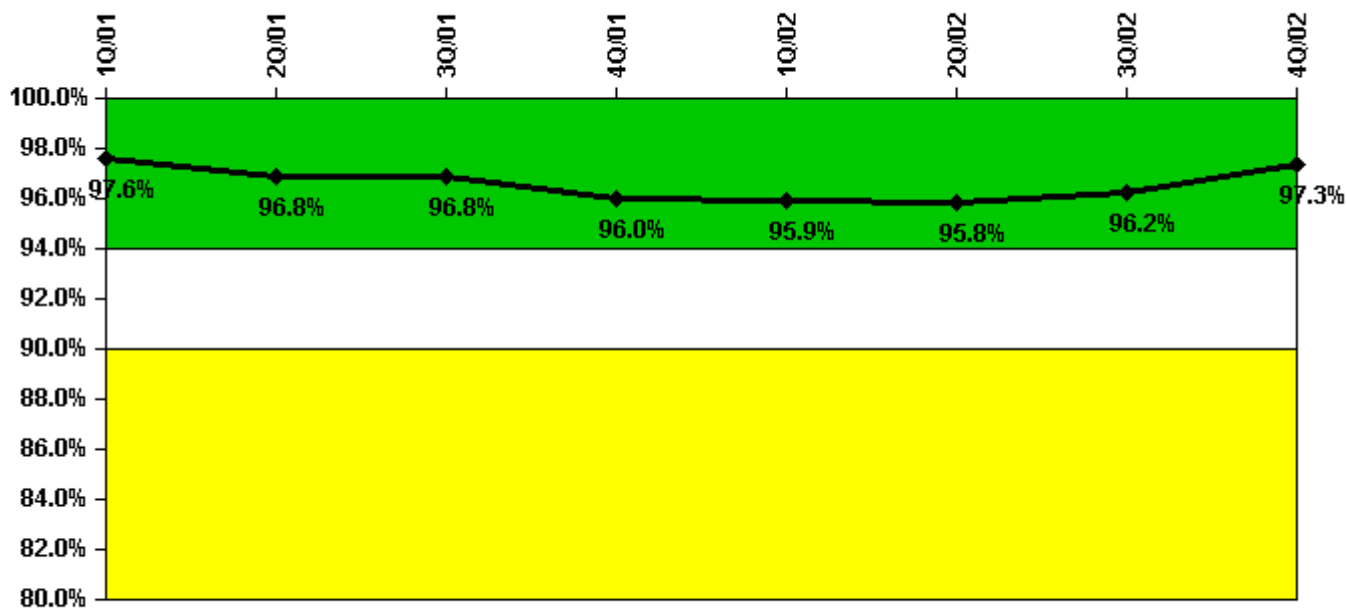
Thresholds: White < 80.0% Yellow < 60.0%

#### Notes

ERO Drill Participation	1Q/01	2Q/01	3Q/01	4Q/01	1Q/02	2Q/02	3Q/02	4Q/02
Participating Key personnel	53.0	59.0	57.0	57.0	58.0	54.0	58.0	58.0
Total Key personnel	54.0	60.0	57.0	59.0	59.0	55.0	58.0	62.0
Indicator value	98.1%	98.3%	100.0%	96.6%	98.3%	98.2%	100.0%	93.5%

Licensee Comments: none

### Alert & Notification System



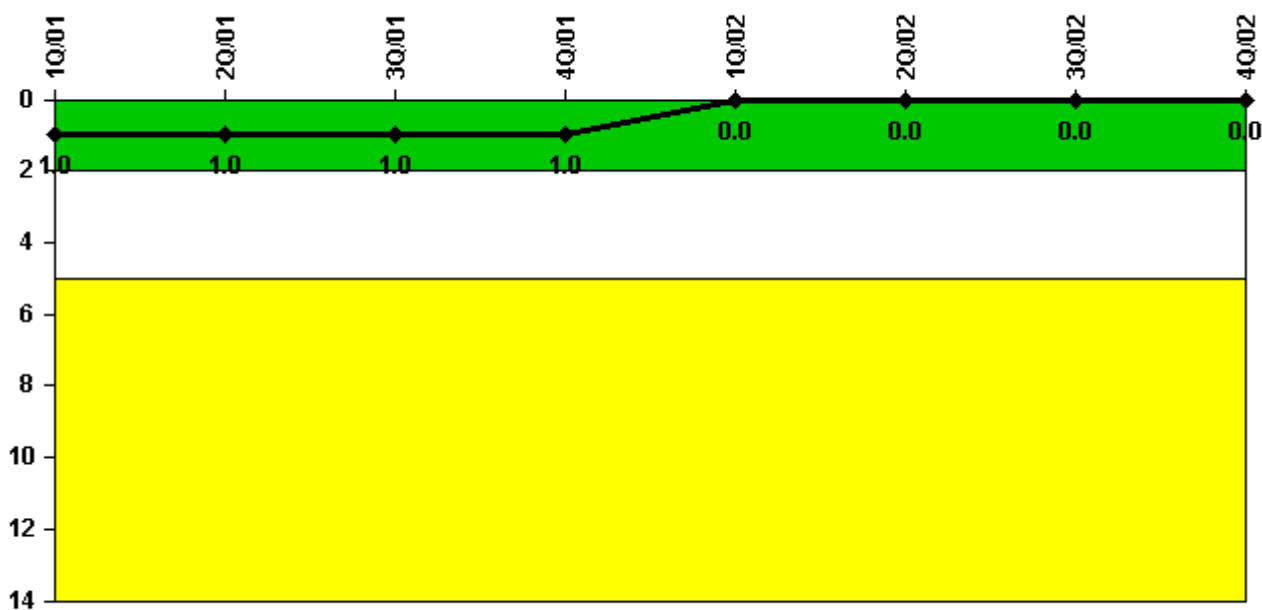
Thresholds: White < 94.0% Yellow < 90.0%

#### Notes

Alert & Notification System	1Q/01	2Q/01	3Q/01	4Q/01	1Q/02	2Q/02	3Q/02	4Q/02
Successful siren-tests	990	944	969	1078	918	956	1035	1007
Total sirens-tests	1002	1002	1002	1140	930	1019	1057	1019
Indicator value	97.6%	96.8%	96.8%	96.0%	95.9%	95.8%	96.2%	97.3%

Licensee Comments: none

### Occupational Exposure Control Effectiveness



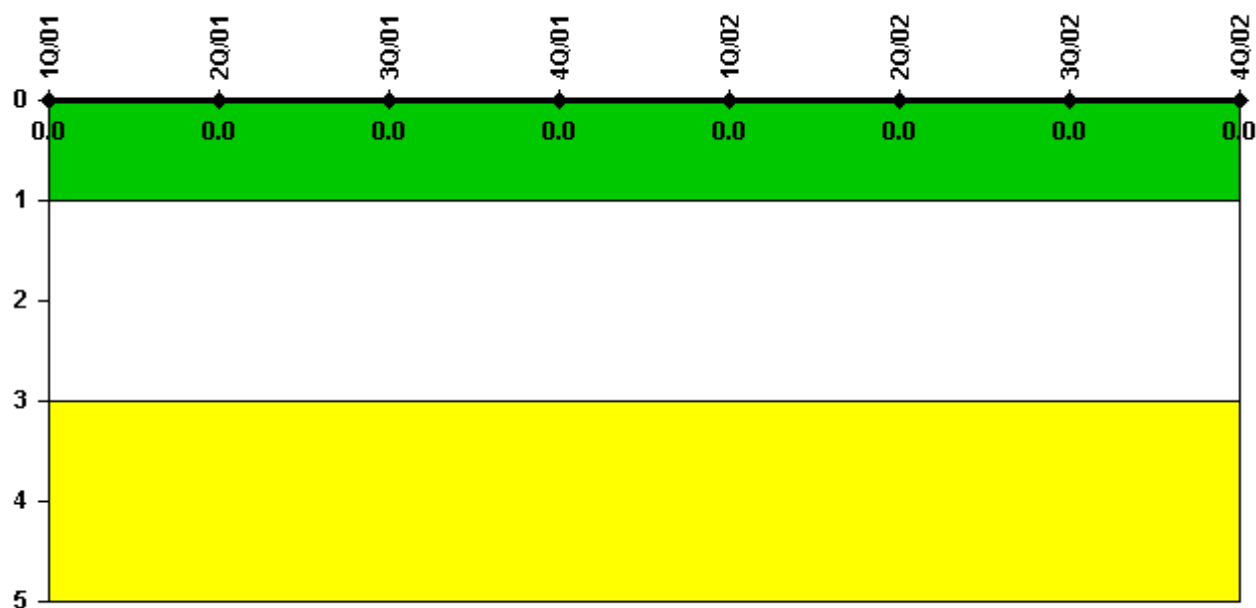
Thresholds: White > 2.0 Yellow > 5.0

#### Notes

Occupational Exposure Control Effectiveness	1Q/01	2Q/01	3Q/01	4Q/01	1Q/02	2Q/02	3Q/02	4Q/02
High radiation area occurrences	1	0	0	0	0	0	0	0
Very high radiation area occurrences	0	0	0	0	0	0	0	0
Unintended exposure occurrences	0	0	0	0	0	0	0	0
Indicator value	1	1	1	1	0	0	0	0

Licensee Comments: none

### RETS/ODCM Radiological Effluent



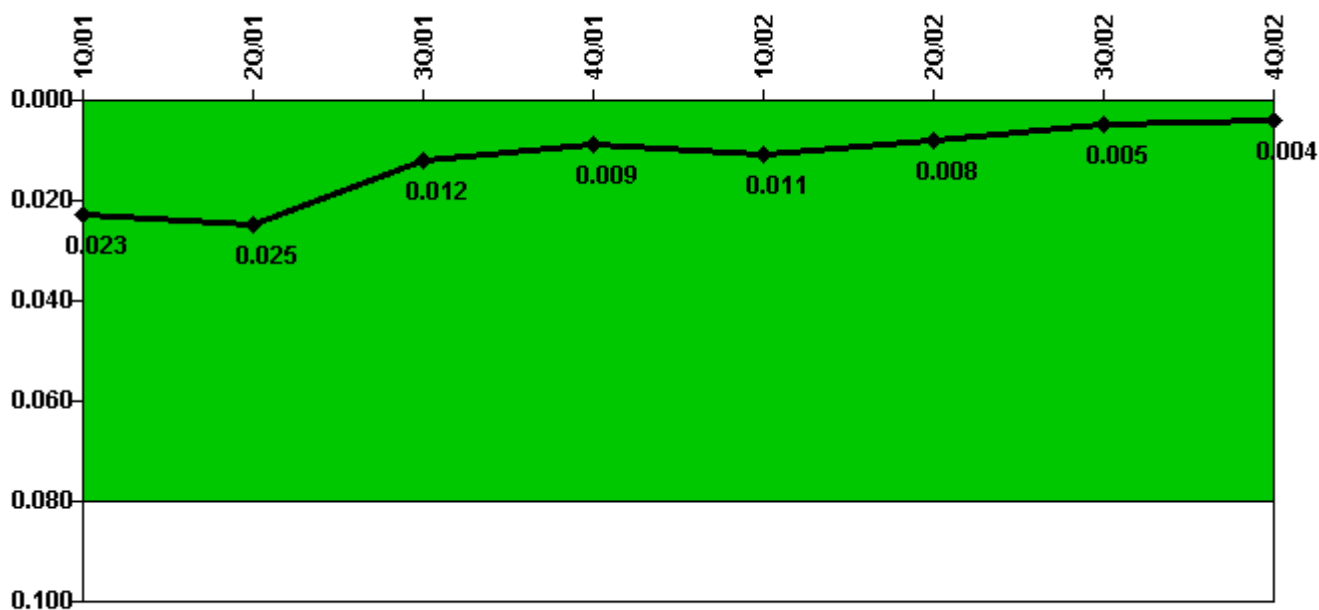
Thresholds: White > 1.0 Yellow > 3.0

**Notes**

RETS/ODCM Radiological Effluent	1Q/01	2Q/01	3Q/01	4Q/01	1Q/02	2Q/02	3Q/02	4Q/02
RETS/ODCM occurrences	0	0	0	0	0	0	0	0
Indicator value	0	0	0	0	0	0	0	0

Licensee Comments: none

### Protected Area Security Performance Index



Thresholds: White > 0.080

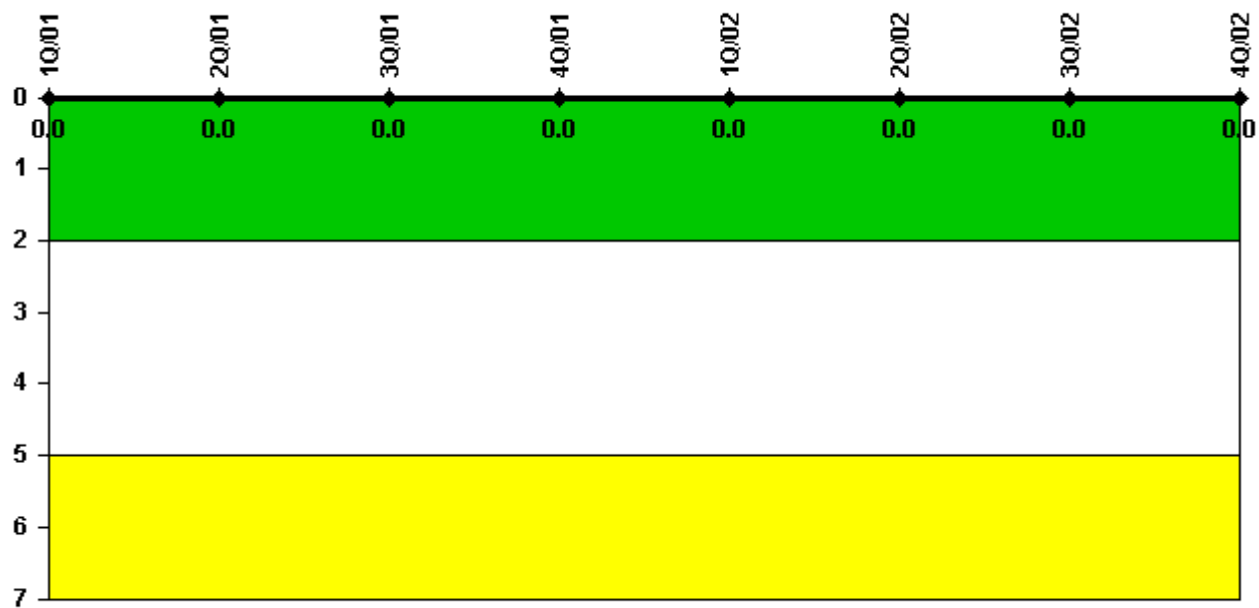
#### Notes

Protected Area Security Performance Index	1Q/01	2Q/01	3Q/01	4Q/01	1Q/02	2Q/02	3Q/02	4Q/02
IDS compensatory hours	14.80	85.60	69.60	39.90	51.10	1.80	7.80	14.20
CCTV compensatory hours	0	0	0	0	19.5	0	0	0
IDS normalization factor	1.40	1.40	1.40	1.40	1.40	1.40	1.40	1.40
CCTV normalization factor	1.2	1.2	1.2	1.2	1.2	1.2	1.2	1.2
<b>Index Value</b>	<b>0.023</b>	<b>0.025</b>	<b>0.012</b>	<b>0.009</b>	<b>0.011</b>	<b>0.008</b>	<b>0.005</b>	<b>0.004</b>

Licensee Comments: none



### Personnel Screening Program



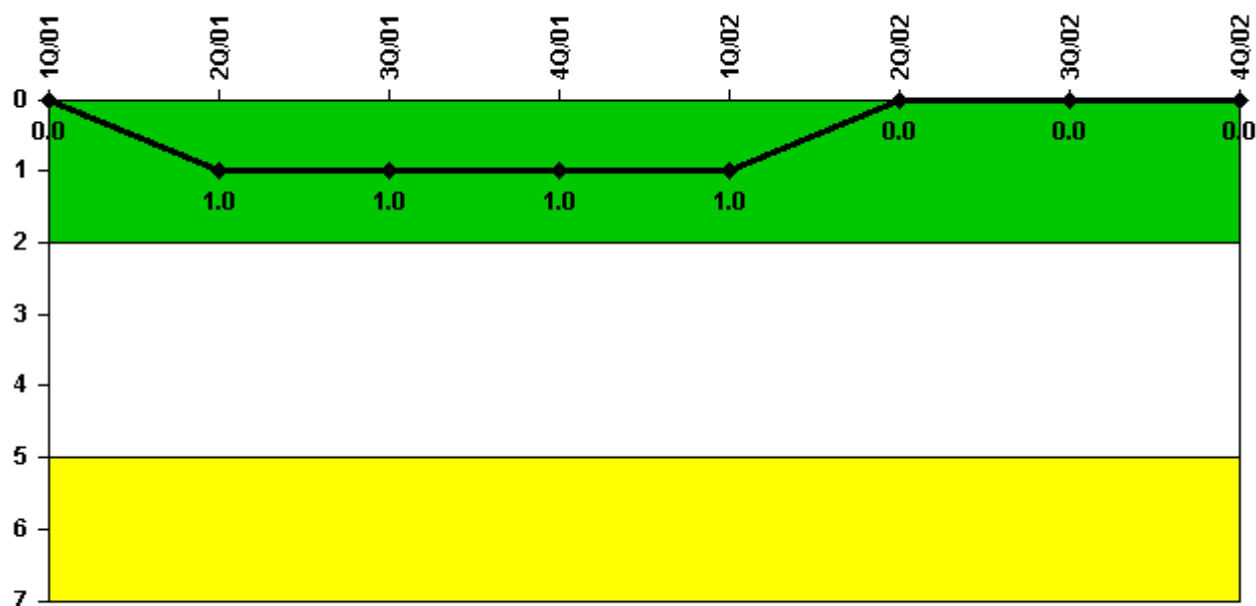
Thresholds: White > 2.0 Yellow > 5.0

#### Notes

Personnel Screening Program	1Q/01	2Q/01	3Q/01	4Q/01	1Q/02	2Q/02	3Q/02	4Q/02
Program failures	0	0	0	0	0	0	0	0
Indicator value	0	0	0	0	0	0	0	0

Licensee Comments: none

### FFD/Personnel Reliability



Thresholds: White > 2.0 Yellow > 5.0

### Notes

FFD/Personnel Reliability	1Q/01	2Q/01	3Q/01	4Q/01	1Q/02	2Q/02	3Q/02	4Q/02
Program Failures	0	1	0	0	0	0	0	0
Indicator value	0	1	1	1	1	0	0	0

Licensee Comments: none

▲ [PI Summary](#) | [Inspection Findings Summary](#) | [Reactor Oversight Process](#)

Last Modified: January 30, 2003