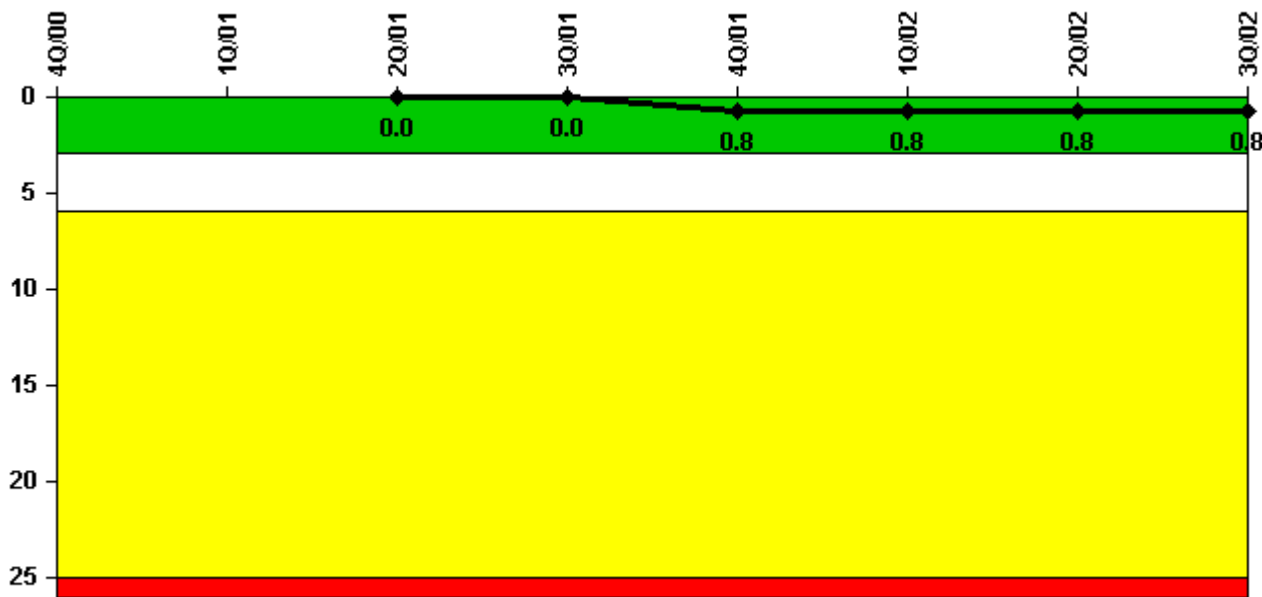


# Indian Point 2

## 3Q/2002 Performance Indicators

Licensee's General Comments: none

### Unplanned Scrams per 7000 Critical Hrs



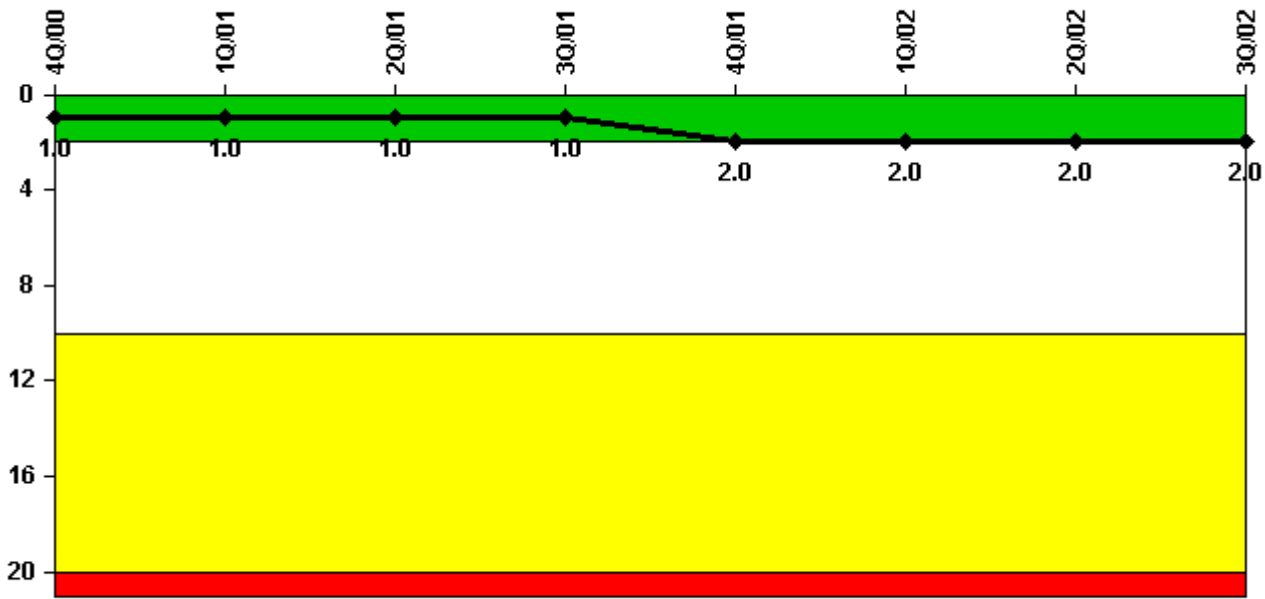
Thresholds: White > 3.0 Yellow > 6.0 Red > 25.0

**Notes**

Unplanned Scrams per 7000 Critical Hrs	4Q/00	1Q/01	2Q/01	3Q/01	4Q/01	1Q/02	2Q/02	3Q/02
Unplanned scrams	0	0	0	0	1.0	0	0	0
Critical hours	44.2	2160.0	2183.0	2208.0	1963.0	2160.0	2183.0	2208.0
Indicator value	N/A	N/A	0	0	0.8	0.8	0.8	0.8

Licensee Comments: none

### Scrams with Loss of Normal Heat Removal



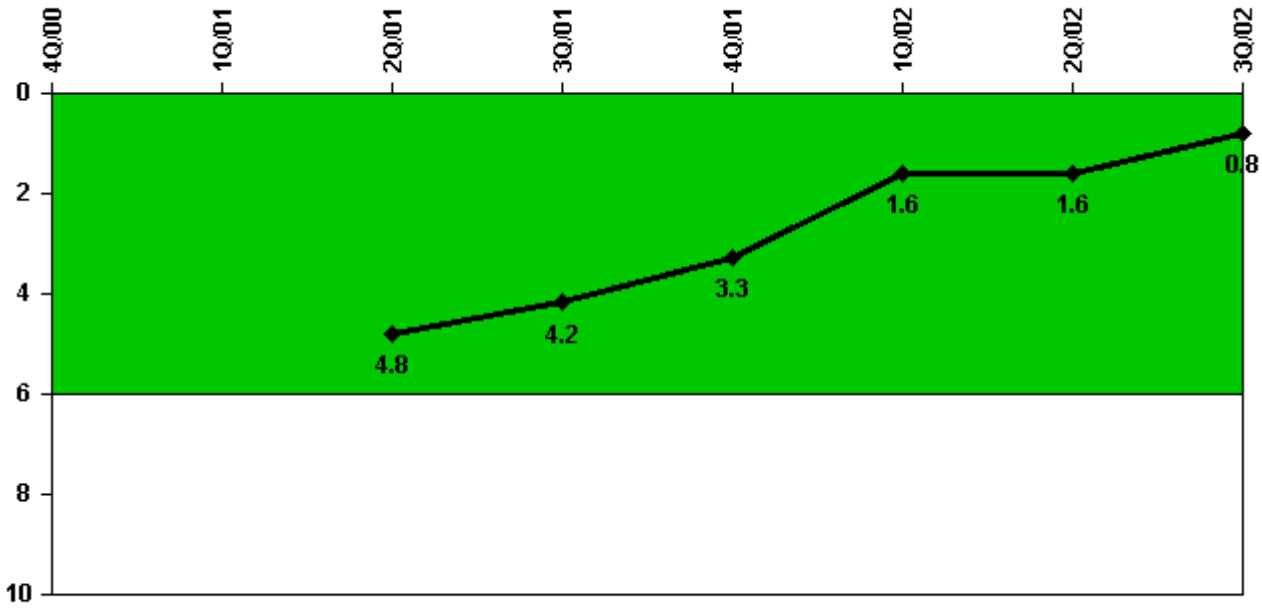
Thresholds: White > 2.0 Yellow > 10.0 Red > 20.0

#### Notes

Scrams with Loss of Normal Heat Removal	4Q/00	1Q/01	2Q/01	3Q/01	4Q/01	1Q/02	2Q/02	3Q/02
Scrams	0	0	0	0	1.0	0	0	0
Indicator value	1.0	1.0	1.0	1.0	2.0	2.0	2.0	2.0

Licensee Comments: none

### Unplanned Power Changes per 7000 Critical Hrs



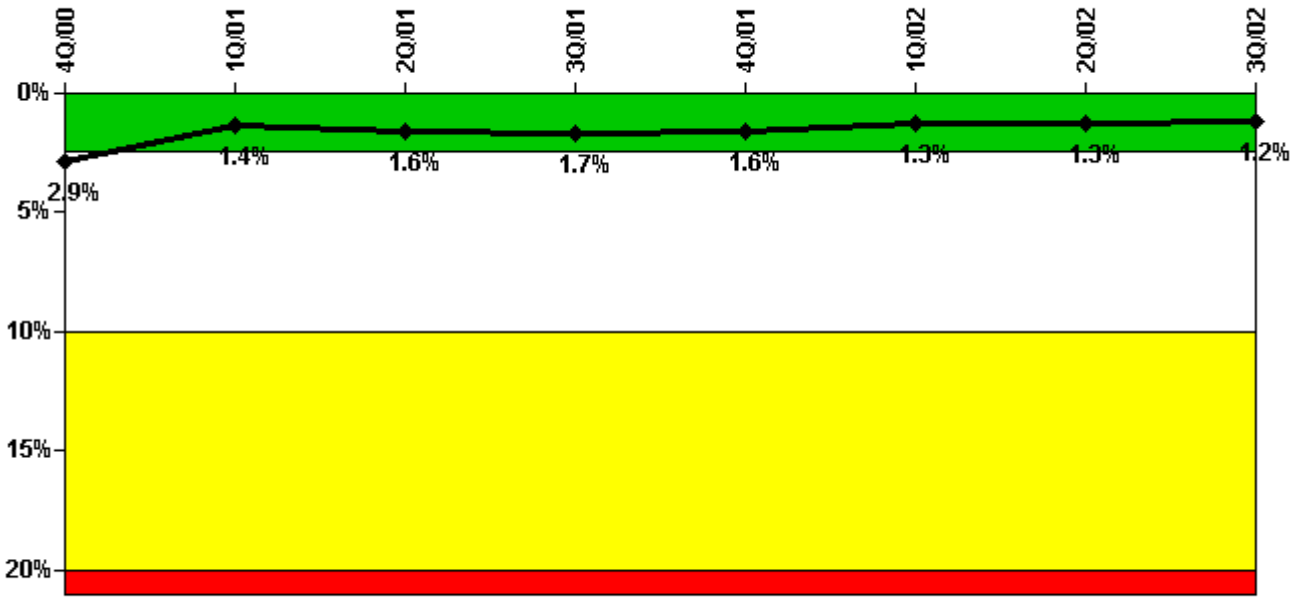
Thresholds: White > 6.0

#### Notes

Unplanned Power Changes per 7000 Critical Hrs	4Q/00	1Q/01	2Q/01	3Q/01	4Q/01	1Q/02	2Q/02	3Q/02
Unplanned power changes	0	2.0	1.0	1.0	0	0	1.0	0
Critical hours	44.2	2160.0	2183.0	2208.0	1963.0	2160.0	2183.0	2208.0
Indicator value	N/A	N/A	4.8	4.2	3.3	1.6	1.6	0.8

Licensee Comments: none

### Safety System Unavailability, Emergency AC Power, >2EDG



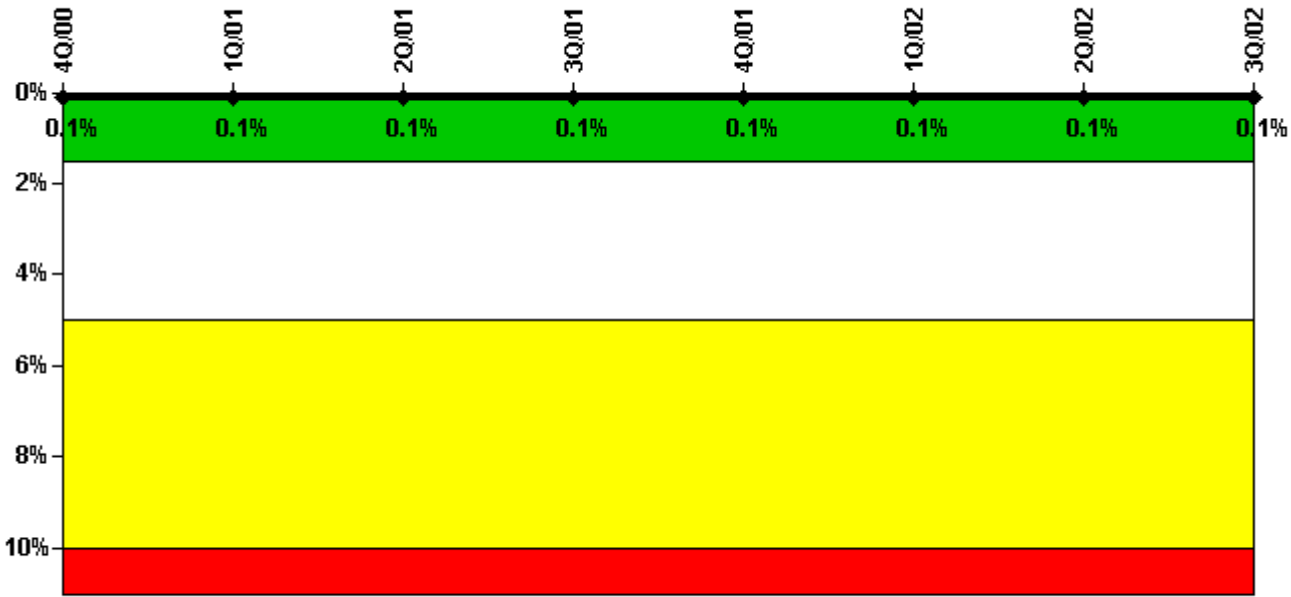
Thresholds: White > 2.5% Yellow > 10.0% Red > 20.0%

#### Notes

Safety System Unavailability, Emergency AC Power, >2EDG	4Q/00	1Q/01	2Q/01	3Q/01	4Q/01	1Q/02	2Q/02	3Q/02
<b>Train 1</b>								
Planned unavailable hours	0	7.30	111.65	8.80	0	0	21.17	4.88
Unplanned unavailable hours	0	0.80	32.93	0	0	0.08	0	0
Fault exposure hours	0	0	0	0	0	0	0	0
Effective Reset hours	0	0	0	0	0	0	0	0
Required hours	2208.00	2160.00	2183.00	2208.00	2208.00	2160.00	2183.00	2208.00
<b>Train 2</b>								
Planned unavailable hours	0	125.87	9.92	51.58	0	34.80	0	0
Unplanned unavailable hours	0	0.63	1.03	0	10.20	18.67	0	29.45
Fault exposure hours	0	0	0	0	0	0	0	0
Effective Reset hours	0	0	0	0	0	0	0	0
Required hours	2208.00	2160.00	2183.00	2208.00	2208.00	2160.00	2183.00	2208.00
<b>Train 3</b>								
Planned unavailable hours	0	81.62	28.93	86.63	0	39.72	0	0
Unplanned unavailable hours	0	0.88	29.03	0	4.85	23.08	0	0
Fault exposure hours	0	0	0	0	0	0	0	0
Effective Reset hours	0	1443.93	0	0	0	0	0	0
Required hours	2208.00	2160.00	2183.00	2208.00	2208.00	2160.00	2183.00	2208.00
<b>Indicator value</b>	<b>2.9%</b>	<b>1.4%</b>	<b>1.6%</b>	<b>1.7%</b>	<b>1.6%</b>	<b>1.3%</b>	<b>1.3%</b>	<b>1.2%</b>

Licensee Comments: none

### Safety System Unavailability, High Pressure Injection System (HPSI)



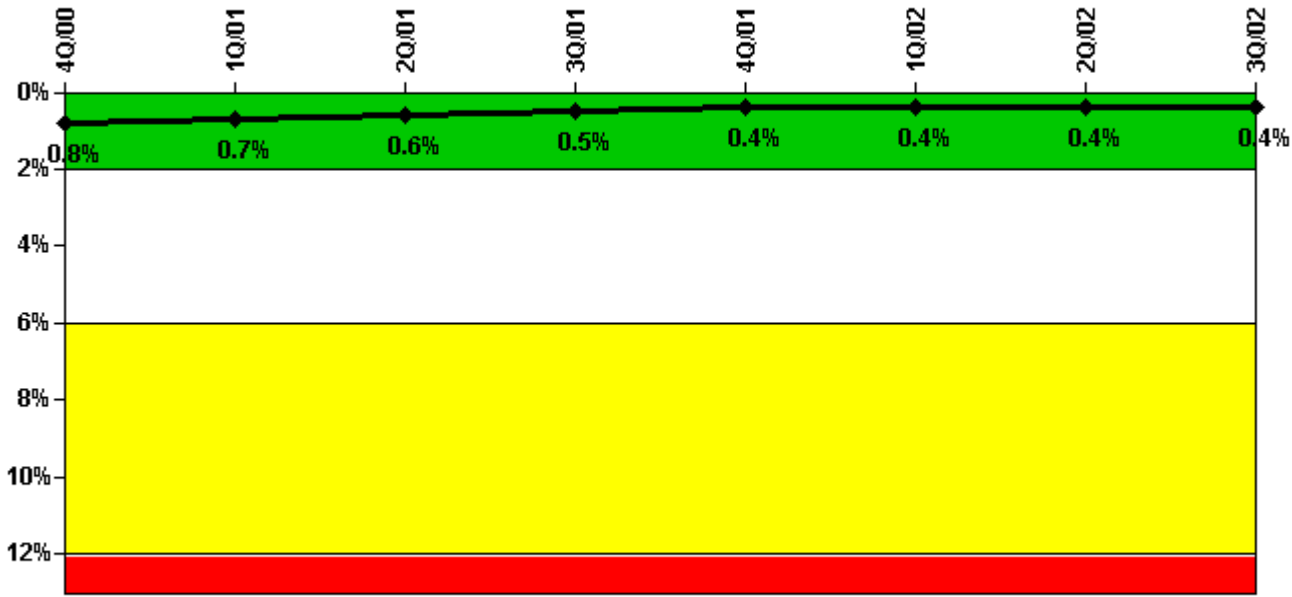
Thresholds: White > 1.5% Yellow > 5.0% Red > 10.0%

#### Notes

Safety System Unavailability, High Pressure Injection System (HPSI)	4Q/00	1Q/01	2Q/01	3Q/01	4Q/01	1Q/02	2Q/02	3Q/02
<b>Train 1</b>								
Planned unavailable hours	0	1.00	5.50	1.00	0.23	0.68	0	0
Unplanned unavailable hours	0	0	0	0	0	0	0	0.25
Fault exposure hours	0	0	0	0	0	0	0	0
Effective Reset hours	0	0	0	0	0	0	0	0
Required hours	44.17	2160.00	2183.00	2208.00	1962.98	2160.00	2183.00	2208.00
<b>Train 2</b>								
Planned unavailable hours	0	6.00	2.53	6.56	0	0.28	0	1.43
Unplanned unavailable hours	0	0	0	0	0.17	0	13.30	0
Fault exposure hours	0	0	0	0	0	0	0	0
Effective Reset hours	0	0	0	0	0	0	0	0
Required hours	44.17	2160.00	2183.00	2208.00	1962.98	2160.00	2183.00	2208.00
<b>Train 3</b>								
Planned unavailable hours	0	4.00	0.40	3.83	0.32	0.41	0	0
Unplanned unavailable hours	0	0	0	0	0	0	0	0
Fault exposure hours	0	0	0	0	0	0	0	0
Effective Reset hours	0	0	0	0	0	0	0	0
Required hours	44.17	2160.00	2183.00	2208.00	1962.98	2160.00	2183.00	2208.00
<b>Indicator value</b>	<b>0.1%</b>	<b>0.1%</b>	<b>0.1%</b>	<b>0.1%</b>	<b>0.1%</b>	<b>0.1%</b>	<b>0.1%</b>	<b>0.1%</b>

Licensee Comments: none

### Safety System Unavailability, Heat Removal System (AFW)



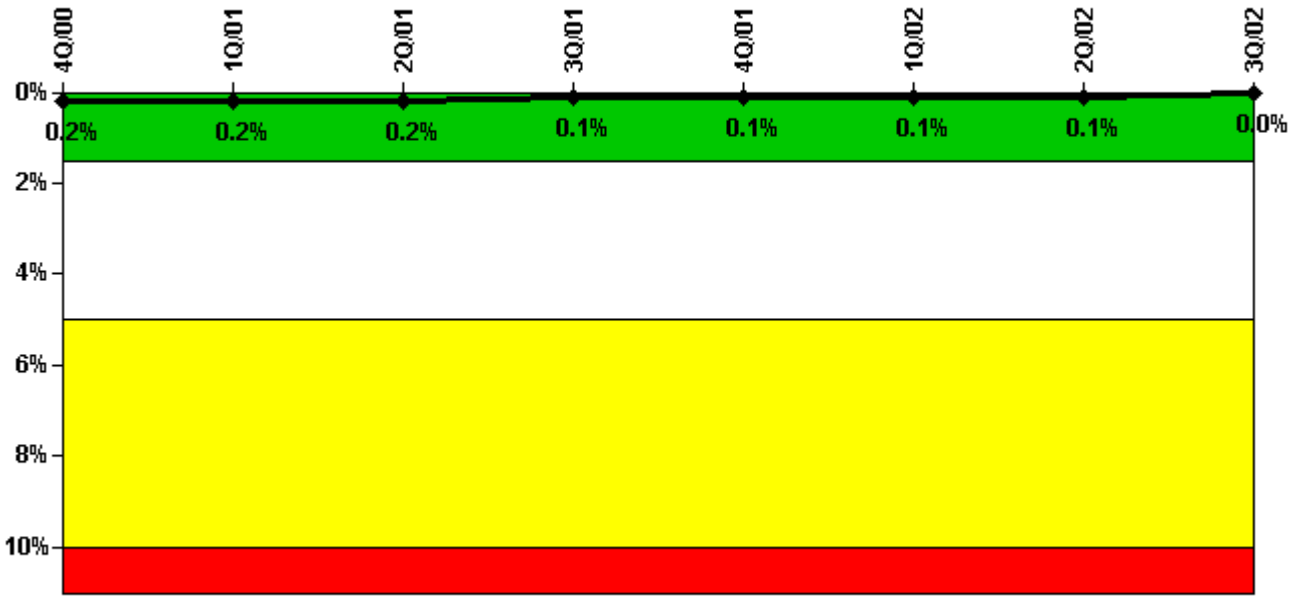
Thresholds: White > 2.0% Yellow > 6.0% Red > 12.0%

#### Notes

Safety System Unavailability, Heat Removal System (AFW)	4Q/00	1Q/01	2Q/01	3Q/01	4Q/01	1Q/02	2Q/02	3Q/02
<b>Train 1</b>								
Planned unavailable hours	0	5.00	5.10	8.50	0	0.71	0	3.56
Unplanned unavailable hours	0	0.40	0	0	12.37	33.75	7.82	0
Fault exposure hours	0	0	0	0	0	0	0	0
Effective Reset hours	0	0	0	0	0	0	0	0
Required hours	44.17	2160.00	2183.00	2208.00	1962.98	2160.00	2183.00	2208.00
<b>Train 2</b>								
Planned unavailable hours	0	5.75	5.80	6.17	0.96	2.38	10.00	14.32
Unplanned unavailable hours	0	0.42	0	0	1.65	0	0	0.33
Fault exposure hours	0	0	0	0	0	0	0	0
Effective Reset hours	0	0	0	0	0	0	0	0
Required hours	44.17	2160.00	2183.00	2208.00	1962.98	2160.00	2183.00	2208.00
<b>Train 3</b>								
Planned unavailable hours	0	13.50	2.50	1.30	12.70	0.33	0.51	8.08
Unplanned unavailable hours	0	4.42	3.50	0	0	0	0	0
Fault exposure hours	0	0	0	0	0	0	0	0
Effective Reset hours	0	0	0	0	0	0	0	0
Required hours	44.17	2160.00	2183.00	2208.00	1962.98	2160.00	2183.00	2208.00
<b>Indicator value</b>	<b>0.8%</b>	<b>0.7%</b>	<b>0.6%</b>	<b>0.5%</b>	<b>0.4%</b>	<b>0.4%</b>	<b>0.4%</b>	<b>0.4%</b>

Licensee Comments: none

### Safety System Unavailability, Residual Heat Removal System



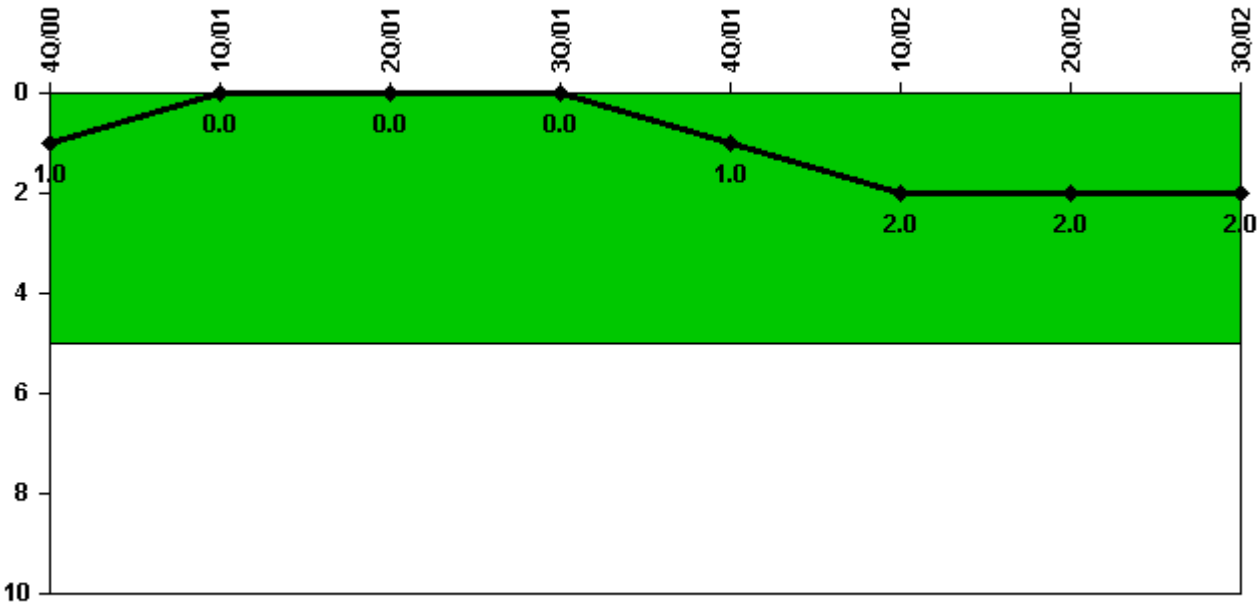
Thresholds: White > 1.5% Yellow > 5.0% Red > 10.0%

#### Notes

Safety System Unavailability, Residual Heat Removal System	4Q/00	1Q/01	2Q/01	3Q/01	4Q/01	1Q/02	2Q/02	3Q/02
<b>Train 1</b>								
Planned unavailable hours	0	8.00	4.50	0.25	0	0.45	0	0.32
Unplanned unavailable hours	0	6.40	0	0	0.17	0	0	0
Fault exposure hours	0	0	0	0	0	0	0	0
Effective Reset hours	0	0	0	0	0	0	0	0
Required hours	957.10	2160.00	2183.00	2208.00	2209.00	2160.00	2183.00	2208.00
<b>Train 2</b>								
Planned unavailable hours	0	0	0.50	0.08	0	0.86	0	0.57
Unplanned unavailable hours	0	4.50	0	0	0	0	0	0
Fault exposure hours	0	0	0	0	0	0	0	0
Effective Reset hours	0	0	0	0	0	0	0	0
Required hours	957.10	2160.00	2183.00	2208.00	2209.00	2160.00	2183.00	2208.00
<b>Train 3</b>								
Planned unavailable hours	0	0	0	0	0	0	0	0
Unplanned unavailable hours	0	0	0	0	0	0	0	0.25
Fault exposure hours	0	0	0	0	0	0	0	0
Effective Reset hours	0	0	0	0	0	0	0	0
Required hours	957.10	2160.00	2183.00	2208.00	2209.00	2160.00	2183.00	2208.00
<b>Train 4</b>								
Planned unavailable hours	0	0	0	0	0	0	0	0
Unplanned unavailable hours	0	0	0	0	0	0	0	0
Fault exposure hours	0	0	0	0	0	0	0	0
Effective Reset hours	0	0	0	0	0	0	0	0
Required hours	957.10	2160.00	2183.00	2208.00	2209.00	2160.00	2183.00	2208.00
Indicator value	0.2%	0.2%	0.2%	0.1%	0.1%	0.1%	0.1%	0%

Licensee Comments: none

### Safety System Functional Failures (PWR)



Thresholds: White > 5.0

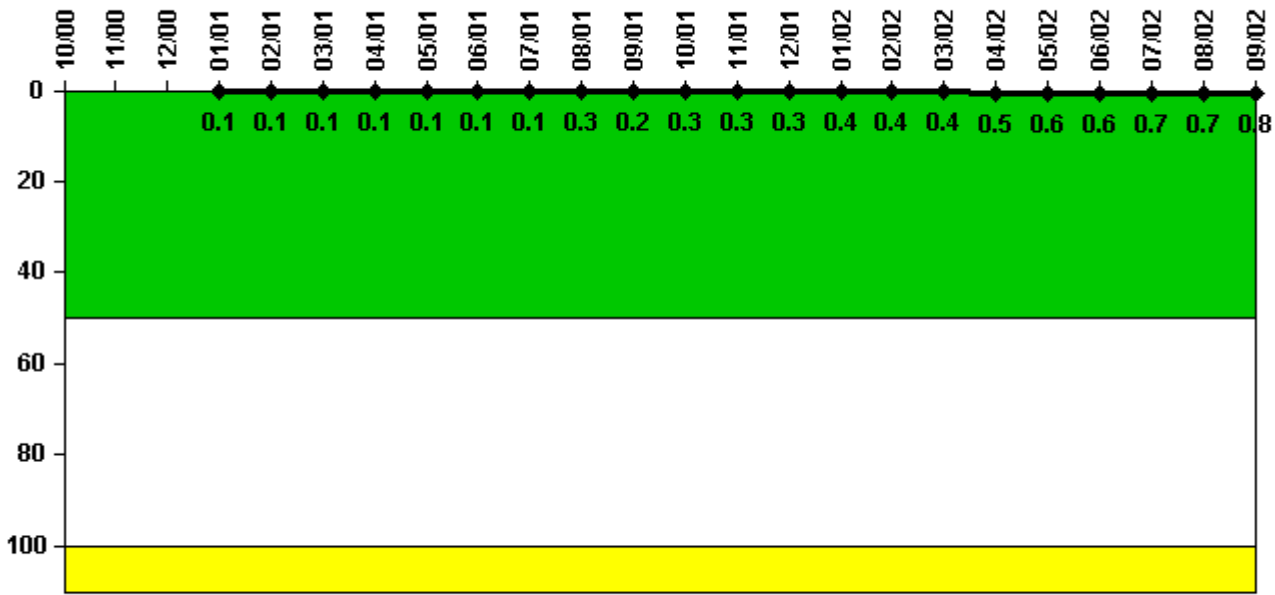
#### Notes

Safety System Functional Failures (PWR)	4Q/00	1Q/01	2Q/01	3Q/01	4Q/01	1Q/02	2Q/02	3Q/02
Safety System Functional Failures	0	0	0	0	1	1	0	0
Indicator value	1	0	0	0	1	2	2	2

Licensee Comments: none



### Reactor Coolant System Activity



Thresholds: White > 50.0 Yellow > 100.0

#### Notes

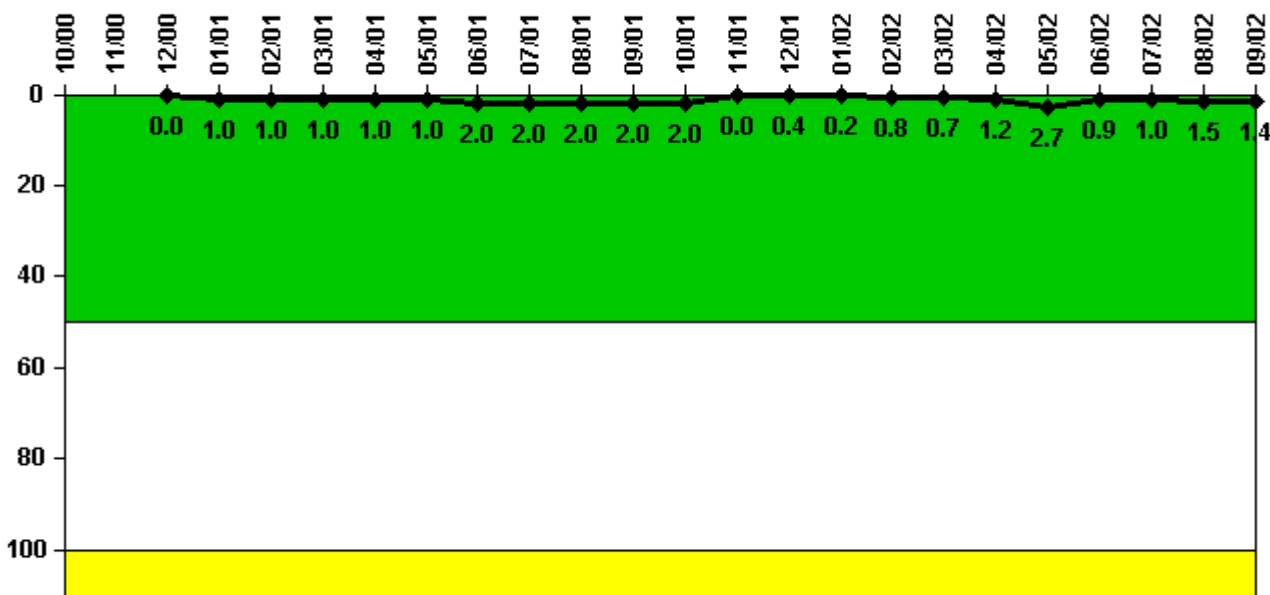
Reactor Coolant System Activity	10/00	11/00	12/00	1/01	2/01	3/01	4/01	5/01	6/01	7/01	8/01	9/01
Maximum activity	N/A	N/A	N/A	0.000600	0.000700	0.000800	0.000770	0.000790	0.001400	0.001100	0.002700	0.001600
Technical specification limit	1.0	1.0	1.0	1.0	1.0	1.0	1.0	1.0	1.0	1.0	1.0	1.0
Indicator value	N/A	N/A	N/A	0.1	0.1	0.1	0.1	0.1	0.1	0.1	0.3	0.2

Reactor Coolant System Activity	10/01	11/01	12/01	1/02	2/02	3/02	4/02	5/02	6/02	7/02	8/02	9/02
Maximum activity	0.002500	0.002900	0.003400	0.003800	0.004300	0.004300	0.004900	0.005800	0.006400	0.006600	0.007200	0.007700
Technical specification limit	1.0	1.0	1.0	1.0	1.0	1.0	1.0	1.0	1.0	1.0	1.0	1.0
Indicator value	0.3	0.3	0.3	0.4	0.4	0.4	0.5	0.6	0.6	0.7	0.7	0.8

Licensee Comments: none

### Reactor Coolant System Leakage



Thresholds: White > 50.0 Yellow > 100.0

#### Notes

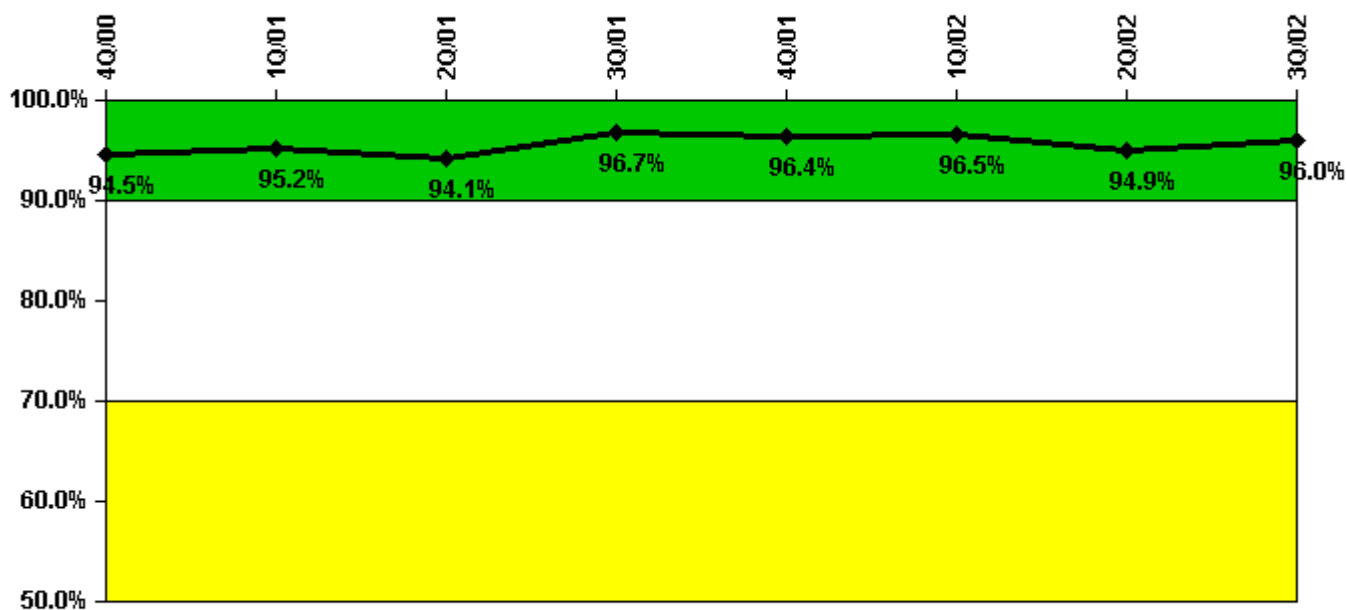
Reactor Coolant System Leakage	10/00	11/00	12/00	1/01	2/01	3/01	4/01	5/01	6/01	7/01	8/01	9/01
Maximum leakage	N/A	N/A	0	0.100	0.100	0.100	0.100	0.100	0.200	0.200	0.200	0.200
Technical specification limit	10.0	10.0	10.0	10.0	10.0	10.0	10.0	10.0	10.0	10.0	10.0	10.0
Indicator value	N/A	N/A	0	1.0	1.0	1.0	1.0	1.0	2.0	2.0	2.0	2.0

Reactor Coolant System Leakage	10/01	11/01	12/01	1/02	2/02	3/02	4/02	5/02	6/02	7/02	8/02	9/02
Maximum leakage	0.200	0	0.039	0.019	0.077	0.068	0.118	0.269	0.090	0.099	0.154	0.143
Technical specification limit	10.0	10.0	10.0	10.0	10.0	10.0	10.0	10.0	10.0	10.0	10.0	10.0
Indicator value	2.0	0	0.4	0.2	0.8	0.7	1.2	2.7	0.9	1.0	1.5	1.4

Licensee Comments: none

### Drill/Exercise Performance



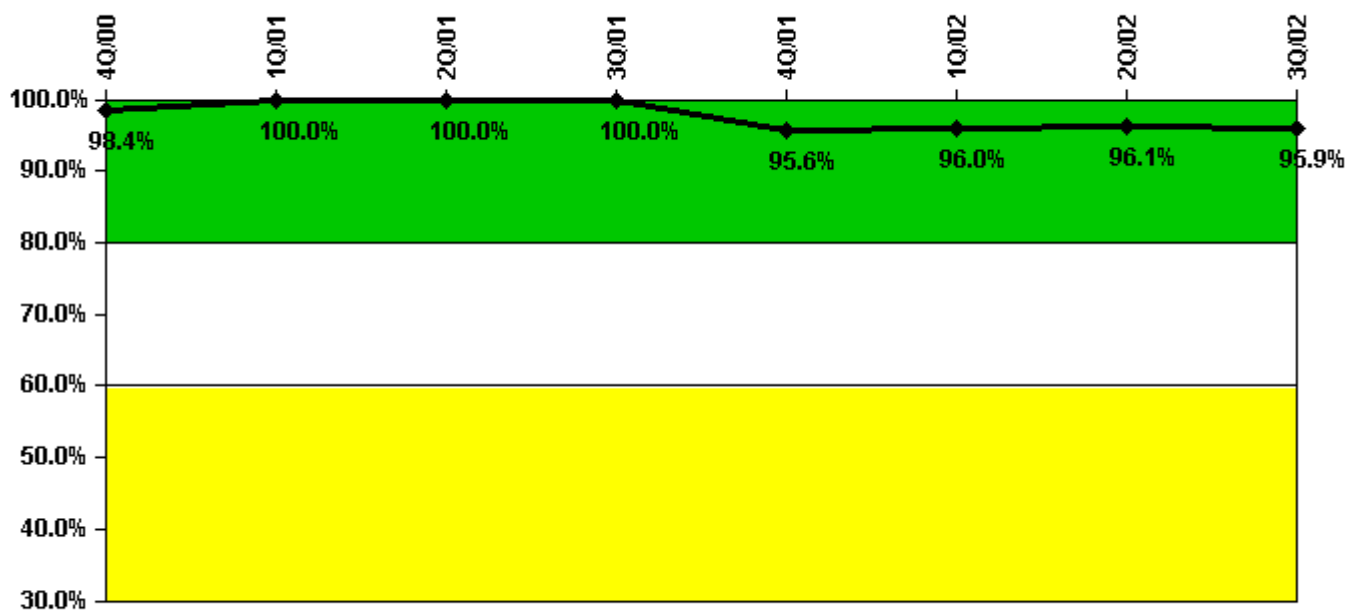
Thresholds: White < 90.0% Yellow < 70.0%

### Notes

Drill/Exercise Performance	4Q/00	1Q/01	2Q/01	3Q/01	4Q/01	1Q/02	2Q/02	3Q/02
Successful opportunities	13.0	28.0	15.0	26.0	10.0	6.0	22.0	50.0
Total opportunities	14.0	29.0	18.0	26.0	10.0	6.0	24.0	50.0
Indicator value	94.5%	95.2%	94.1%	96.7%	96.4%	96.5%	94.9%	96.0%

Licensee Comments: none

### ERO Drill Participation



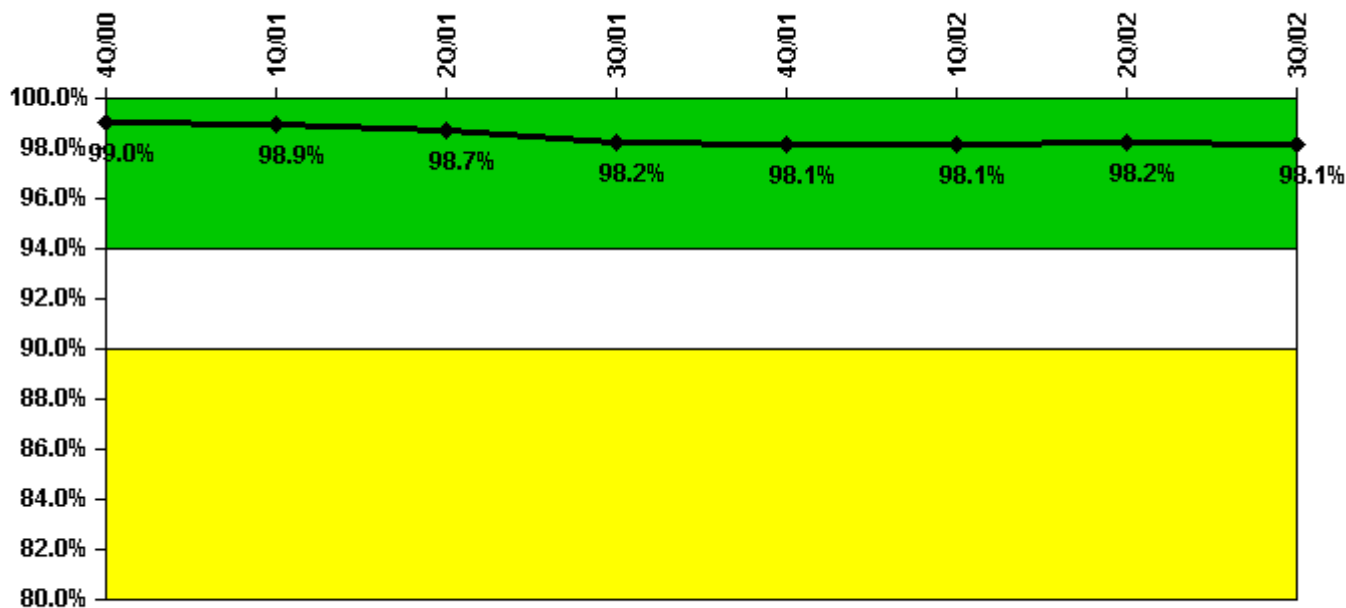
Thresholds: White < 80.0% Yellow < 60.0%

#### Notes

ERO Drill Participation	4Q/00	1Q/01	2Q/01	3Q/01	4Q/01	1Q/02	2Q/02	3Q/02
Participating Key personnel	62.0	48.0	48.0	45.0	43.0	48.0	49.0	47.0
Total Key personnel	63.0	48.0	48.0	45.0	45.0	50.0	51.0	49.0
Indicator value	98.4%	100.0%	100.0%	100.0%	95.6%	96.0%	96.1%	95.9%

Licensee Comments: none

### Alert & Notification System



Thresholds: White < 94.0% Yellow < 90.0%

#### Notes

Alert & Notification System	4Q/00	1Q/01	2Q/01	3Q/01	4Q/01	1Q/02	2Q/02	3Q/02
Successful siren-tests	906	1069	1062	997	1197	1003	1111	991
Total sirens-tests	924	1078	1078	1029	1222	1011	1124	1029
Indicator value	99.0%	98.9%	98.7%	98.2%	98.1%	98.1%	98.2%	98.1%

Licensee Comments: none

### Occupational Exposure Control Effectiveness



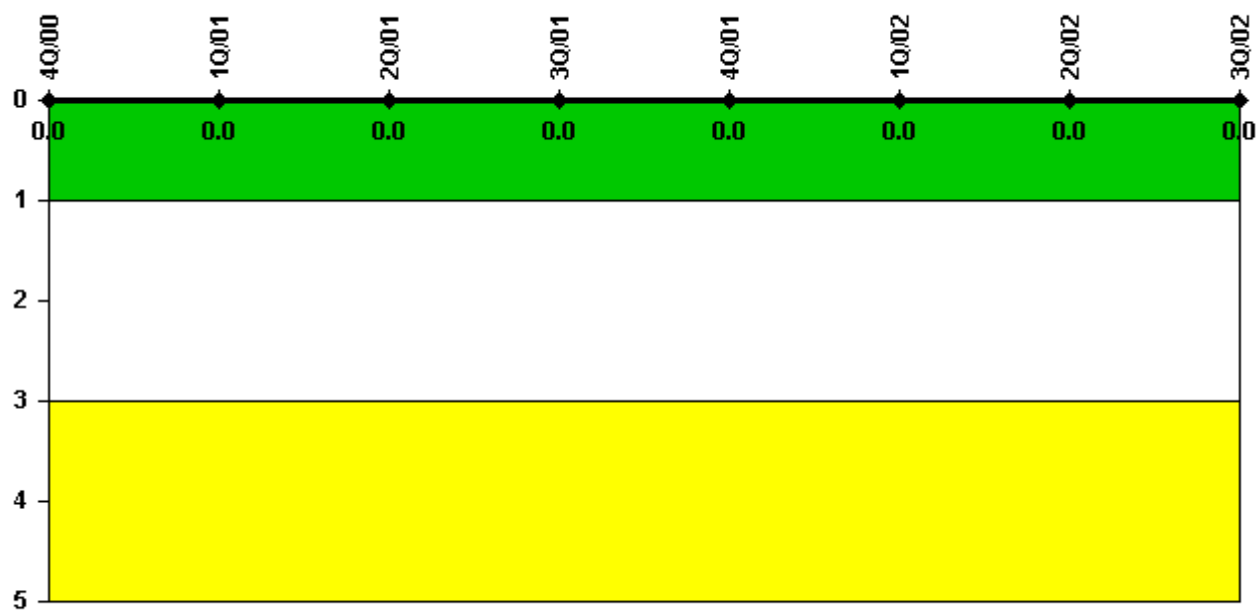
Thresholds: White > 2.0 Yellow > 5.0

#### Notes

Occupational Exposure Control Effectiveness	4Q/00	1Q/01	2Q/01	3Q/01	4Q/01	1Q/02	2Q/02	3Q/02
High radiation area occurrences	0	0	0	0	0	0	0	0
Very high radiation area occurrences	0	0	0	0	0	0	0	0
Unintended exposure occurrences	0	0	0	0	0	0	0	0
Indicator value	0	0	0	0	0	0	0	0

Licensee Comments: none

### RETS/ODCM Radiological Effluent



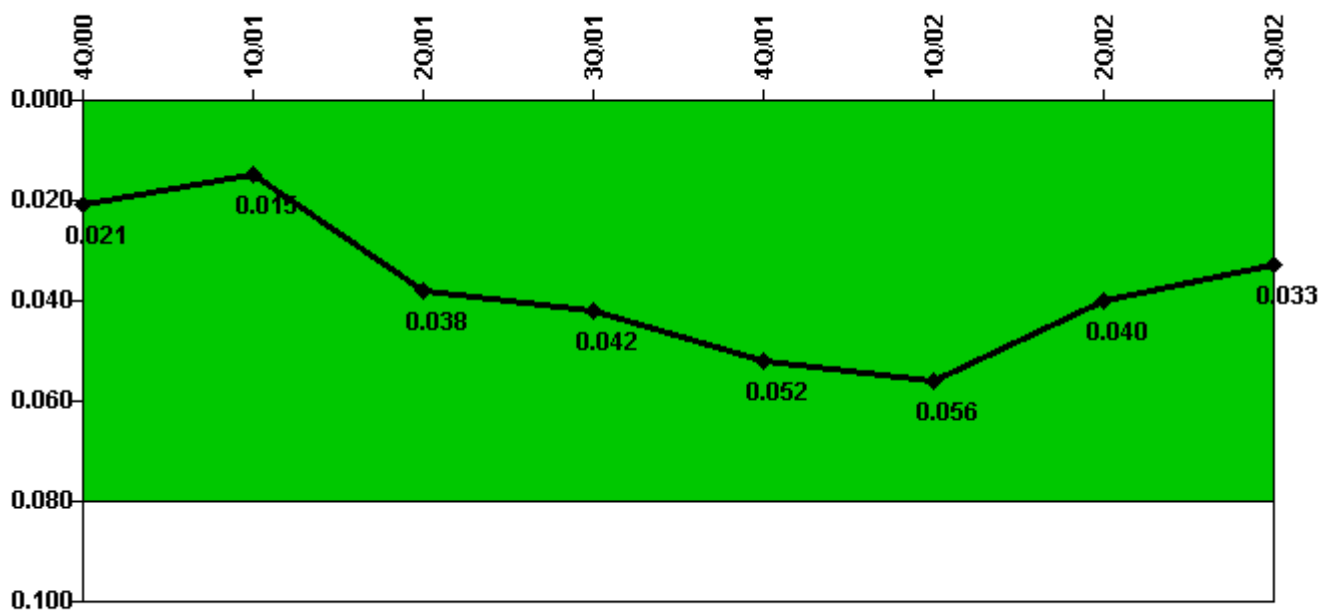
Thresholds: White > 1.0 Yellow > 3.0

#### Notes

RETS/ODCM Radiological Effluent	4Q/00	1Q/01	2Q/01	3Q/01	4Q/01	1Q/02	2Q/02	3Q/02
RETS/ODCM occurrences	0	0	0	0	0	0	0	0
Indicator value	0	0	0	0	0	0	0	0

Licensee Comments: none

### Protected Area Security Performance Index



Thresholds: White > 0.080

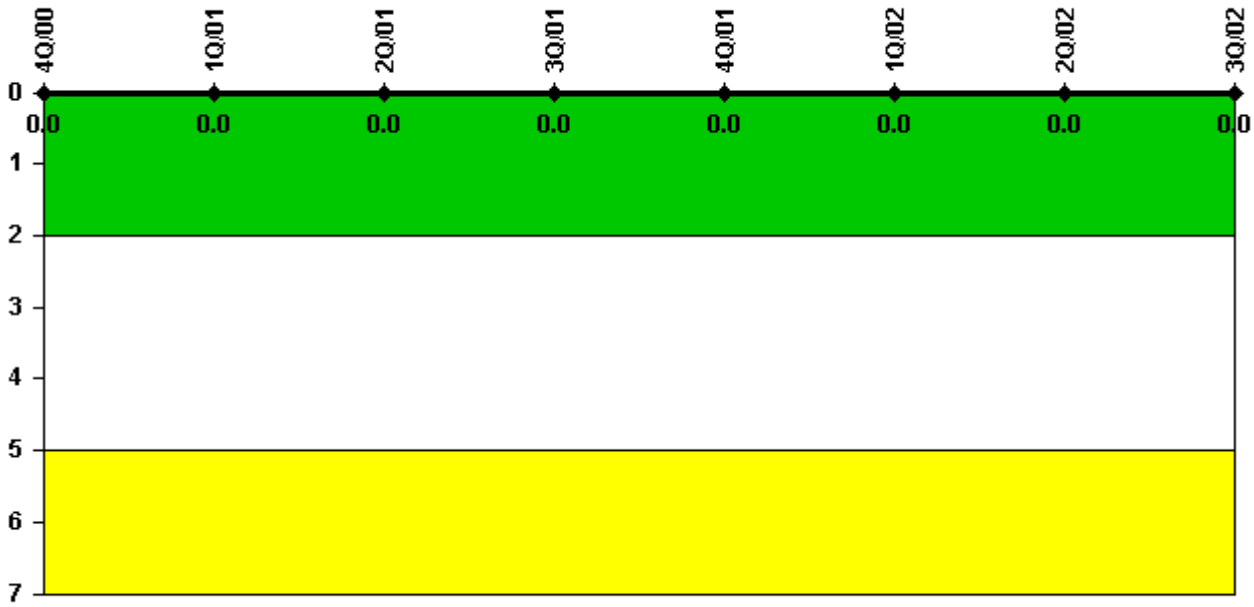
#### Notes

Protected Area Security Performance Index	4Q/00	1Q/01	2Q/01	3Q/01	4Q/01	1Q/02	2Q/02	3Q/02
IDS compensatory hours	75.92	7.49	238.12	114.83	47.93	34.74	206.95	15.55
CCTV compensatory hours	6.3	21.0	285.2	25.8	219.3	72.6	0	2.4
IDS normalization factor	1.00	1.00	1.00	1.00	1.00	1.00	1.00	1.00
CCTV normalization factor	1.1	1.1	1.1	1.1	1.1	1.1	1.1	1.1
Index Value	0.021	0.015	0.038	0.042	0.052	0.056	0.040	0.033

Licensee Comments: none



### Personnel Screening Program



**Thresholds: White > 2.0 Yellow > 5.0**

#### Notes

Personnel Screening Program	4Q/00	1Q/01	2Q/01	3Q/01	4Q/01	1Q/02	2Q/02	3Q/02
Program failures	0	0	0	0	0	0	0	0
Indicator value	0	0	0	0	0	0	0	0

Licensee Comments: none

### FFD/Personnel Reliability



Thresholds: White > 2.0 Yellow > 5.0

#### Notes

FFD/Personnel Reliability	4Q/00	1Q/01	2Q/01	3Q/01	4Q/01	1Q/02	2Q/02	3Q/02
Program Failures	0	0	0	0	0	0	0	0
Indicator value	0	0	0	0	0	0	0	0

Licensee Comments: none

▲ [PI Summary](#) | [Inspection Findings Summary](#) | [Reactor Oversight Process](#)

Last Modified: October 22, 2002