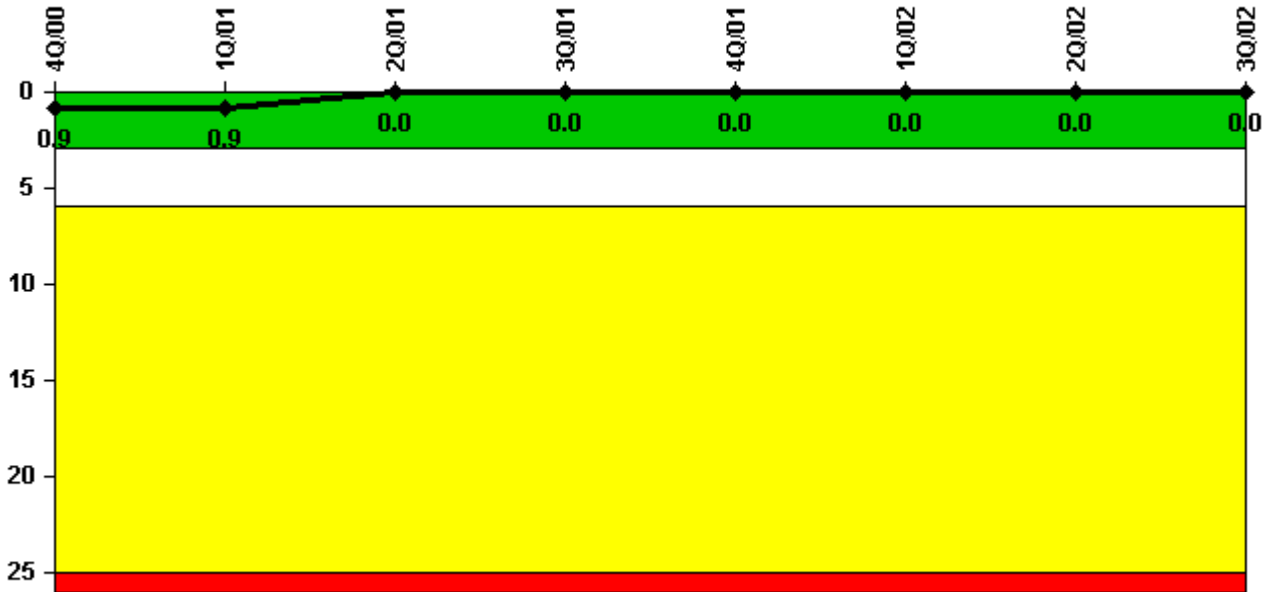


# FitzPatrick

## 3Q/2002 Performance Indicators

Licensee's General Comments: none

### Unplanned Scrams per 7000 Critical Hrs



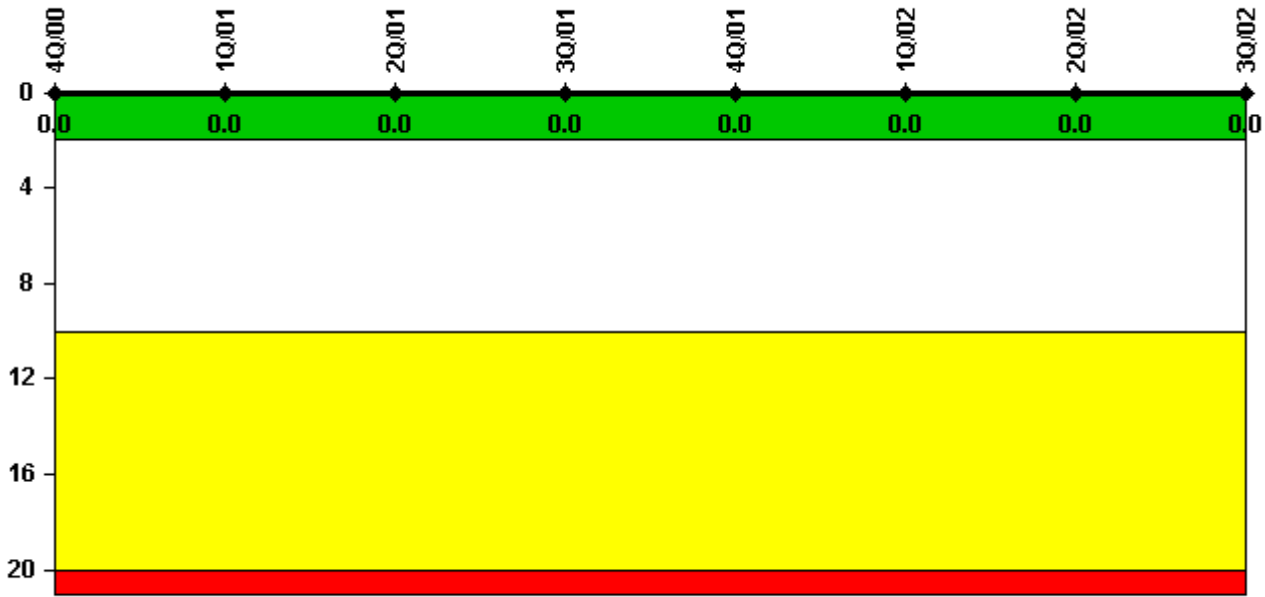
**Thresholds: White > 3.0 Yellow > 6.0 Red > 25.0**

### Notes

Unplanned Scrams per 7000 Critical Hrs	4Q/00	1Q/01	2Q/01	3Q/01	4Q/01	1Q/02	2Q/02	3Q/02
Unplanned scrams	0	0	0	0	0	0	0	0
Critical hours	1342.3	2033.7	2183.0	2208.0	2209.0	2160.0	2146.0	2208.0
Indicator value	0.9	0.9	0	0	0	0	0	0

Licensee Comments: none

### Scrams with Loss of Normal Heat Removal



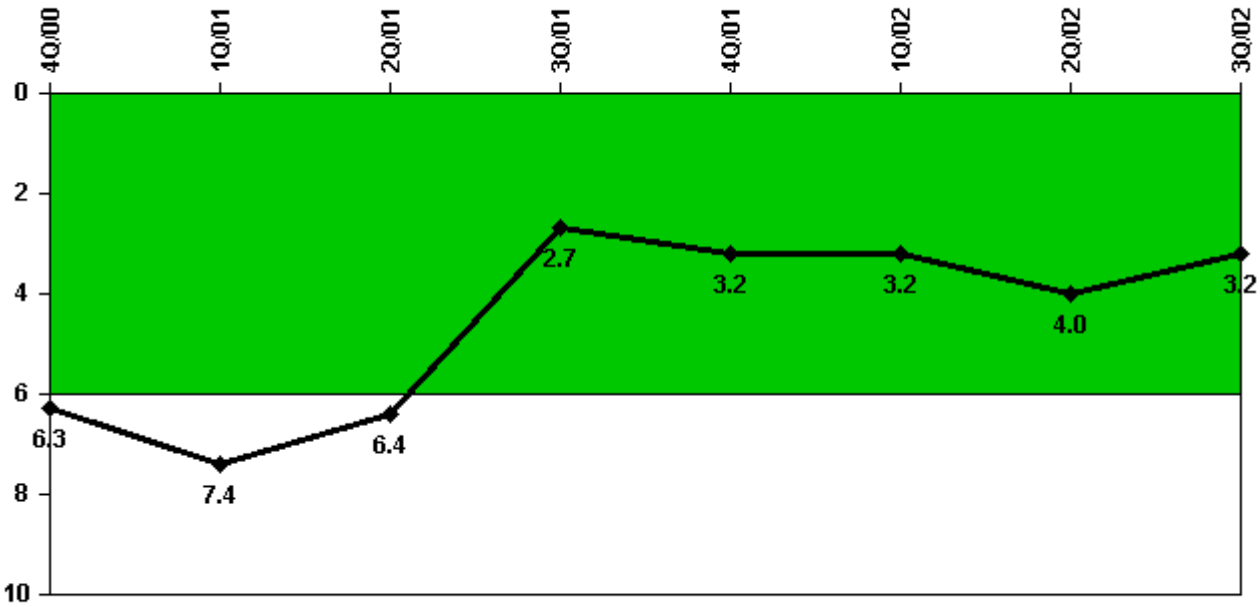
Thresholds: White > 2.0 Yellow > 10.0 Red > 20.0

#### Notes

Scrams with Loss of Normal Heat Removal	4Q/00	1Q/01	2Q/01	3Q/01	4Q/01	1Q/02	2Q/02	3Q/02
Scrams	0	0	0	0	0	0	0	0
Indicator value	0	0	0	0	0	0	0	0

Licensee Comments: none

### Unplanned Power Changes per 7000 Critical Hrs



Thresholds: White > 6.0

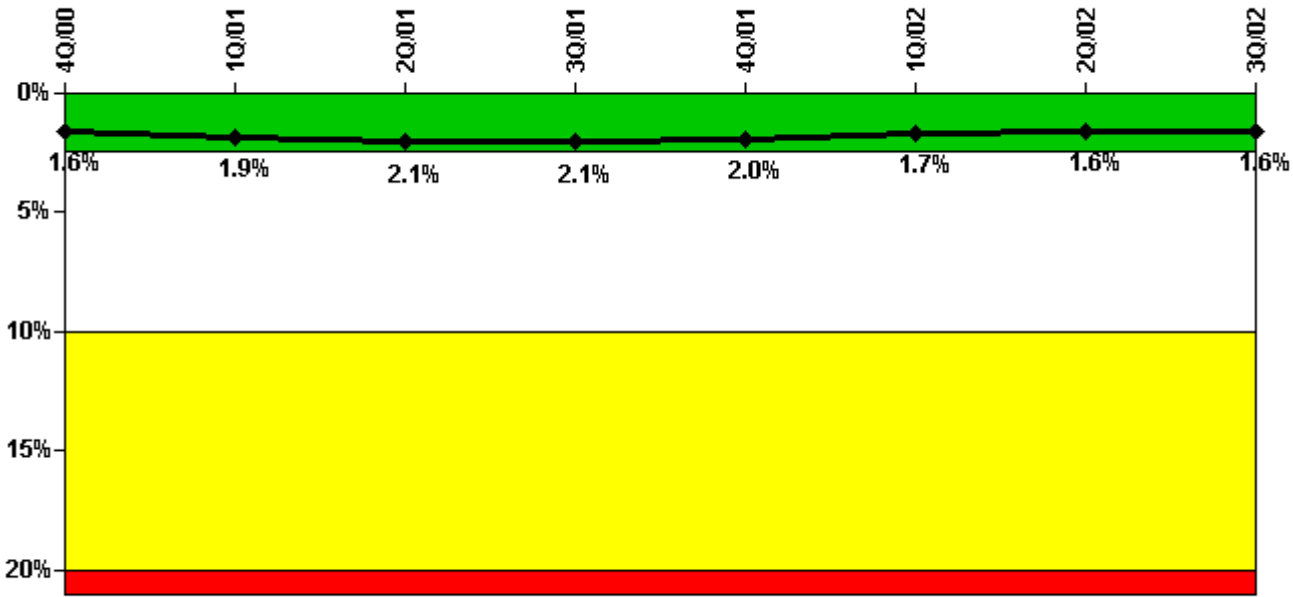
#### Notes

Unplanned Power Changes per 7000 Critical Hrs	4Q/00	1Q/01	2Q/01	3Q/01	4Q/01	1Q/02	2Q/02	3Q/02
Unplanned power changes	0	2.0	0	1.0	1.0	2.0	1.0	0
Critical hours	1342.3	2033.7	2183.0	2208.0	2209.0	2160.0	2146.0	2208.0
Indicator value	6.3	7.4	6.4	2.7	3.2	3.2	4.0	3.2

#### Licensee Comments:

3Q/02: A procedure approved by the Onsite Safety Review Committee for implementation of a Feedwater temperature reduction plant design change was conducted on September 17, 2002. The plant entered a planned power reduction to 88% power to remove the high pressure heaters from service by shutting the manual extraction steam valves from the turbine. As part of the planned sequence, power increased to approximately 94% due to expected positive reactivity addition (i.e., removal of Feedwater heating). In order to completely shut the extraction steam isolation valves to avoid steam cutting of the valve seats, it was necessary to further lower power to 70%. The lower power was necessary to overcome the existing DP across the extraction steam isolation valves. The DP was determined to be normal and was not anticipated in the downpower plan details. No off-normal conditions were identified before, during or after the planned evolution. The evolution was a planned power change that resulted in the plant taking a larger power reduction than had been anticipated (an additional 18%).

### Safety System Unavailability, Emergency AC Power, >2EDG



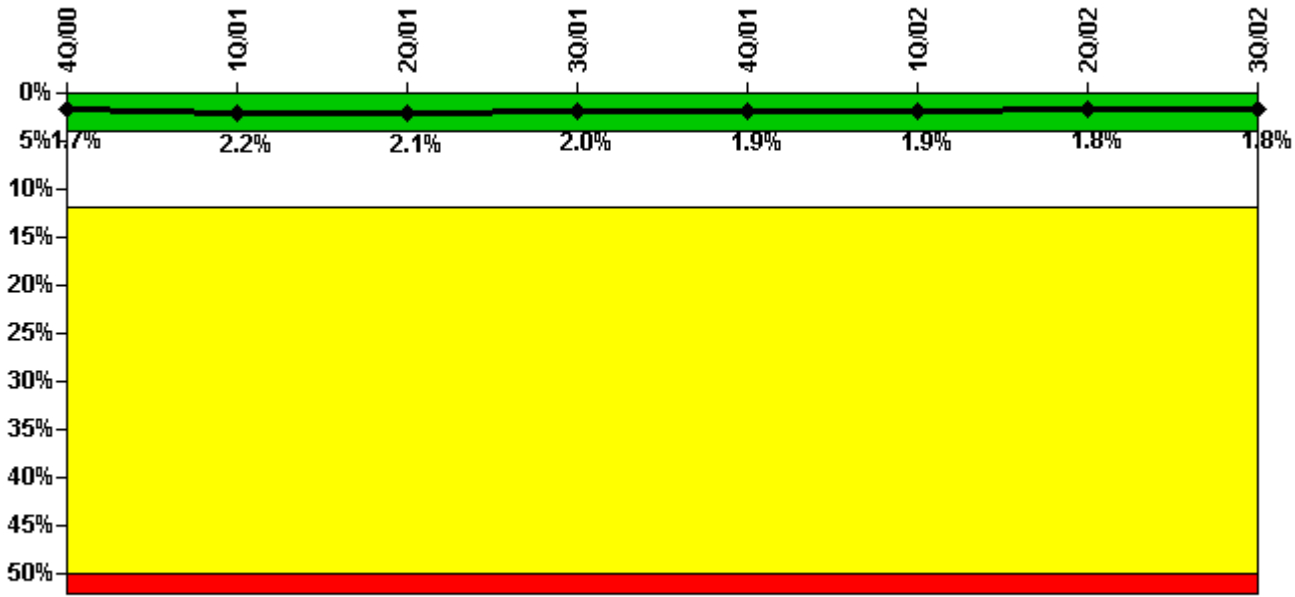
Thresholds: White > 2.5% Yellow > 10.0% Red > 20.0%

#### Notes

Safety System Unavailability, Emergency AC Power, >2EDG	4Q/00	1Q/01	2Q/01	3Q/01	4Q/01	1Q/02	2Q/02	3Q/02
<b>Train 1</b>								
Planned unavailable hours	11.79	17.62	102.32	6.24	5.94	16.53	4.98	7.87
Unplanned unavailable hours	0	295.65	0.51	0	0	28.83	0	0
Fault exposure hours	0	358.78	0	0	0	0	0	0
Effective Reset hours	0	0	0	0	0	0	0	0
Required hours	2209.00	2160.00	2183.00	2208.00	2209.00	2160.00	2183.00	2208.00
<b>Train 2</b>								
Planned unavailable hours	14.99	10.66	83.41	7.50	5.26	6.78	35.04	23.73
Unplanned unavailable hours	0	48.50	0	0	0	0	0	0
Fault exposure hours	0	0	0	0	0	0	0	0
Effective Reset hours	0	0	0	0	0	0	0	0
Required hours	2209.00	2160.00	2183.00	2208.00	2209.00	2160.00	2183.00	2208.00
<b>Train 3</b>								
Planned unavailable hours	11.79	25.07	10.29	5.72	5.80	12.12	25.60	7.60
Unplanned unavailable hours	0	1.05	0.51	0	0	0	0	0
Fault exposure hours	0	0	0	0	0	0	0	0
Effective Reset hours	0	0	0	0	0	0	0	0
Required hours	2209.00	2160.00	2183.00	2208.00	2209.00	2160.00	2183.00	2208.00
<b>Train 4</b>								
Planned unavailable hours	14.99	14.09	21.36	7.26	5.23	6.36	31.81	19.21
Unplanned unavailable hours	0	0	0	0	0	0	0	0
Fault exposure hours	0	0	0	0	0	0	0	0
Effective Reset hours	0	0	0	0	0	0	0	0
Required hours	2209.00	2160.00	2183.00	2208.00	2209.00	2160.00	2183.00	2208.00
<b>Indicator value</b>	<b>1.6%</b>	<b>1.9%</b>	<b>2.1%</b>	<b>2.1%</b>	<b>2.0%</b>	<b>1.7%</b>	<b>1.6%</b>	<b>1.6%</b>

Licensee Comments: none

### Safety System Unavailability, High Pressure Injection System (HPCI)



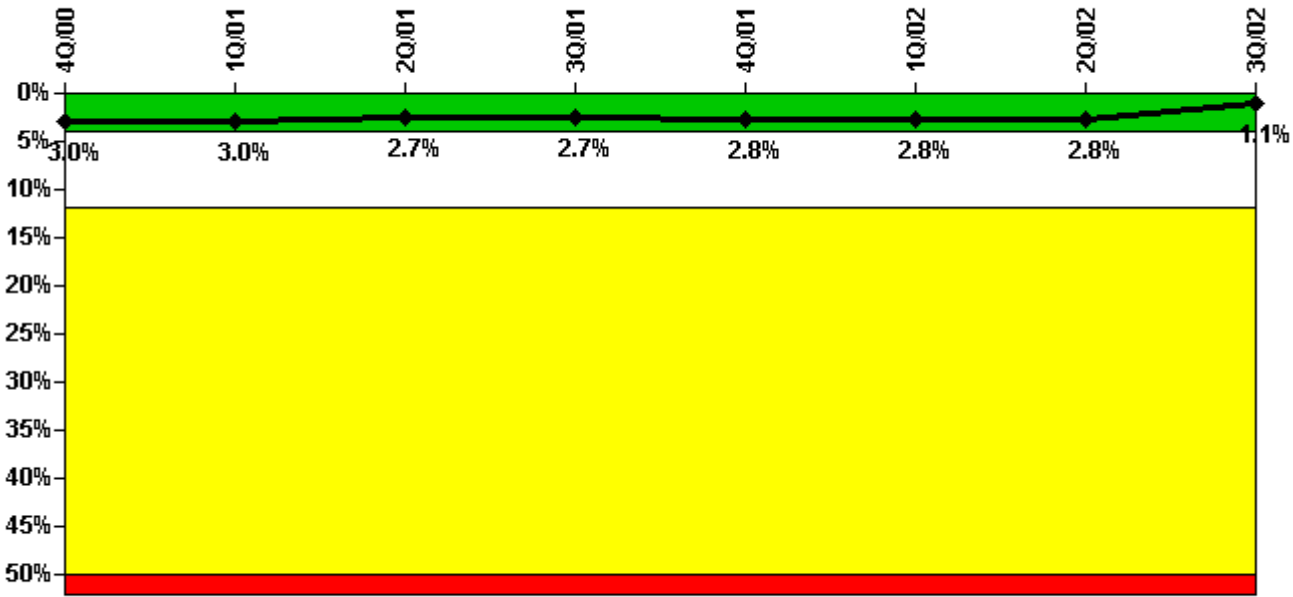
Thresholds: White > 4.0% Yellow > 12.0% Red > 50.0%

#### Notes

Safety System Unavailability, High Pressure Injection System (HPCI)	4Q/00	1Q/01	2Q/01	3Q/01	4Q/01	1Q/02	2Q/02	3Q/02
Train 1								
Planned unavailable hours	3.50	54.40	0.60	0.95	0.98	1.39	0.40	0.24
Unplanned unavailable hours	15.95	52.76	0.25	0	0	0	0	5.05
Fault exposure hours	69.60	0	0	0	0	0	0	0
Effective Reset hours	0	0	0	0	0	0	0	0
Required hours	1322.58	2062.13	2183.00	2208.00	2209.00	2160.00	2146.00	2208.00
Indicator value	1.7%	2.2%	2.1%	2.0%	1.9%	1.9%	1.8%	1.8%

Licensee Comments: none

### Safety System Unavailability, Heat Removal System (RCIC)



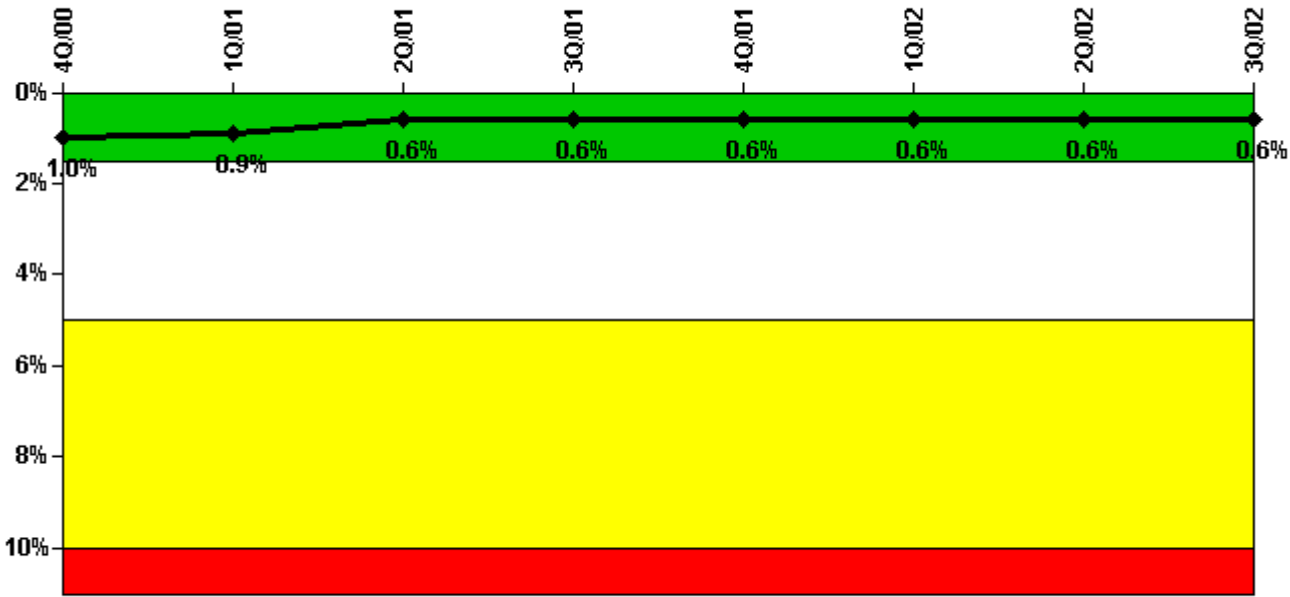
Thresholds: White > 4.0% Yellow > 12.0% Red > 50.0%

#### Notes

Safety System Unavailability, Heat Removal System (RCIC)	4Q/00	1Q/01	2Q/01	3Q/01	4Q/01	1Q/02	2Q/02	3Q/02
Train 1								
Planned unavailable hours	15.99	7.86	6.58	6.00	56.90	1.40	0.42	0
Unplanned unavailable hours	0	0	0	0	17.83	0	0	0
Fault exposure hours	0	0	0	0	0	0	0	0
Effective Reset hours	0	0	0	0	0	0	0	0
Required hours	1322.58	2062.13	2183.00	2208.00	2209.00	2160.00	2146.00	2208.00
Indicator value	3.0%	3.0%	2.7%	2.7%	2.8%	2.8%	2.8%	1.1%

Licensee Comments: none

### Safety System Unavailability, Residual Heat Removal System



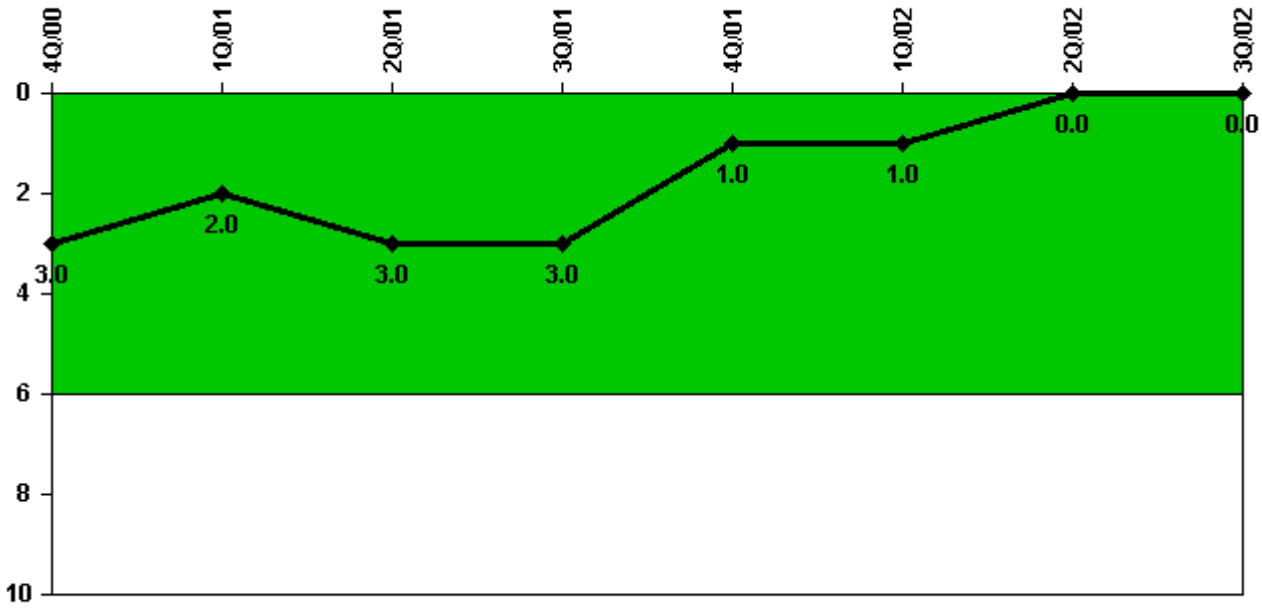
Thresholds: White > 1.5% Yellow > 5.0% Red > 10.0%

#### Notes

Safety System Unavailability, Residual Heat Removal System	4Q/00	1Q/01	2Q/01	3Q/01	4Q/01	1Q/02	2Q/02	3Q/02
<b>Train 1</b>								
Planned unavailable hours	0	0	2.40	0	0	1.33	22.90	0.20
Unplanned unavailable hours	3.20	37.50	0	0	0	21.00	2.30	0
Fault exposure hours	0	0	0	0	0	0	0	0
Effective Reset hours	0	0	0	0	0	0	0	0
Required hours	1469.00	2160.00	2183.00	2208.00	2209.00	2160.00	2183.00	2208.00
<b>Train 2</b>								
Planned unavailable hours	0	0	0	0	15.80	0	0	1.00
Unplanned unavailable hours	0	19.70	0	0	0	0	2.30	0
Fault exposure hours	0	0	0	0	0	0	0	0
Effective Reset hours	0	0	0	0	0	0	0	0
Required hours	1469.00	2160.00	2183.00	2208.00	2209.00	2160.00	2183.00	2208.00
<b>Indicator value</b>	<b>1.0%</b>	<b>0.9%</b>	<b>0.6%</b>	<b>0.6%</b>	<b>0.6%</b>	<b>0.6%</b>	<b>0.6%</b>	<b>0.6%</b>

Licensee Comments: none

### Safety System Functional Failures (BWR)



Thresholds: White > 6.0

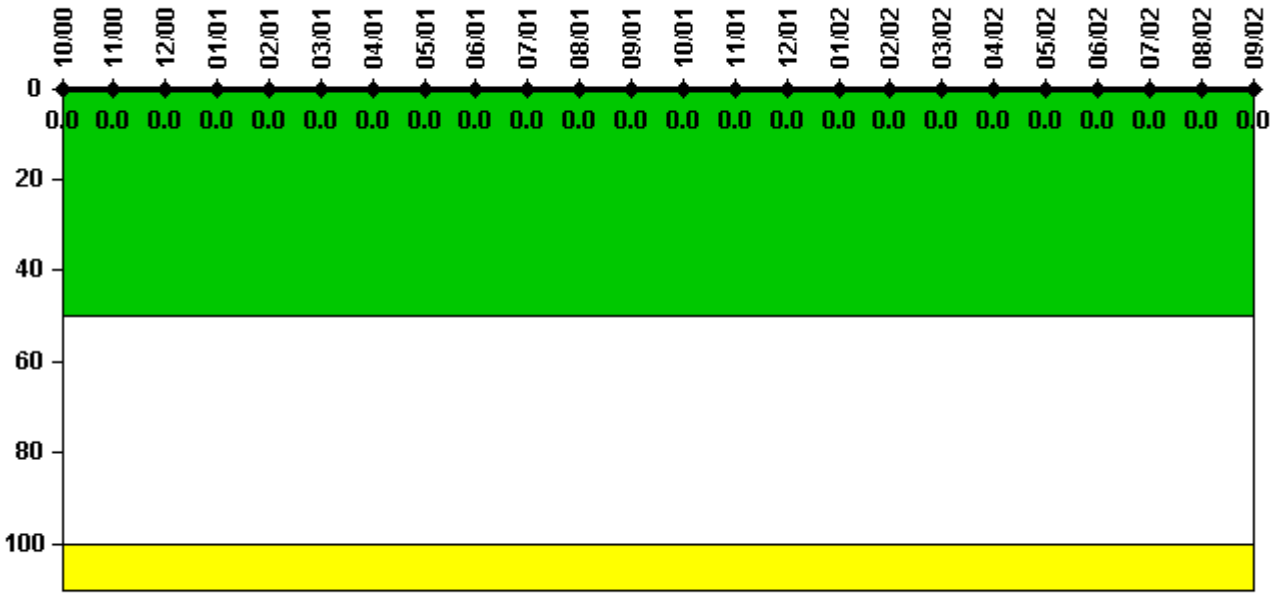
#### Notes

Safety System Functional Failures (BWR)	4Q/00	1Q/01	2Q/01	3Q/01	4Q/01	1Q/02	2Q/02	3Q/02
Safety System Functional Failures	2	0	1	0	0	0	0	0
Indicator value	3	2	3	3	1	1	0	0

Licensee Comments: none



### Reactor Coolant System Activity



Thresholds: White > 50.0 Yellow > 100.0

#### Notes

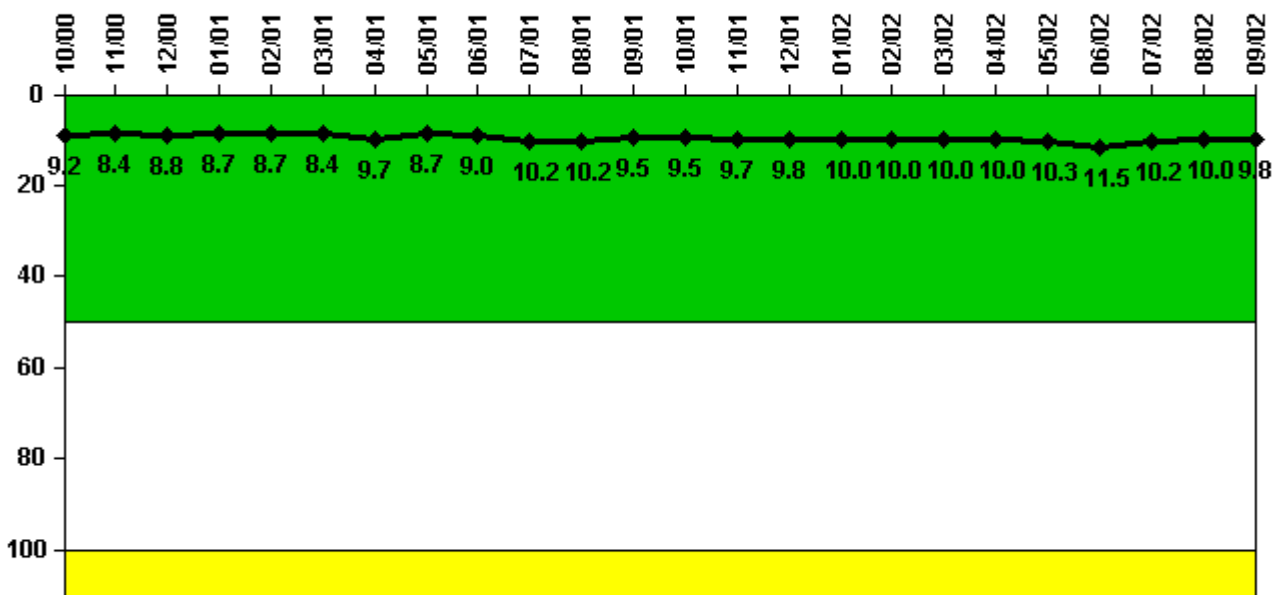
Reactor Coolant System Activity	10/00	11/00	12/00	1/01	2/01	3/01	4/01	5/01	6/01	7/01	8/01	9/01
Maximum activity	0.000050	0.000007	0.000012	0.000009	0.000008	0.000012	0.000023	0.000011	0.000007	0.000009	0.000009	0.000064
Technical specification limit	0.2	0.2	0.2	0.2	0.2	0.2	0.2	0.2	0.2	0.2	0.2	0.2
Indicator value	0	0	0	0	0	0	0	0	0	0	0	0

Reactor Coolant System Activity	10/01	11/01	12/01	1/02	2/02	3/02	4/02	5/02	6/02	7/02	8/02	9/02
Maximum activity	0.000007	0.000009	0.000011	0.000010	0.000006	0.000007	0.000008	0.000009	0.000006	0.000009	0.000016	0.000010
Technical specification limit	0.2	0.2	0.2	0.2	0.2	0.2	0.2	0.2	0.2	0.2	0.2	0.2
Indicator value	0	0	0	0	0	0	0	0	0	0	0	0

Licensee Comments: none

### Reactor Coolant System Leakage



Thresholds: White > 50.0 Yellow > 100.0

#### Notes

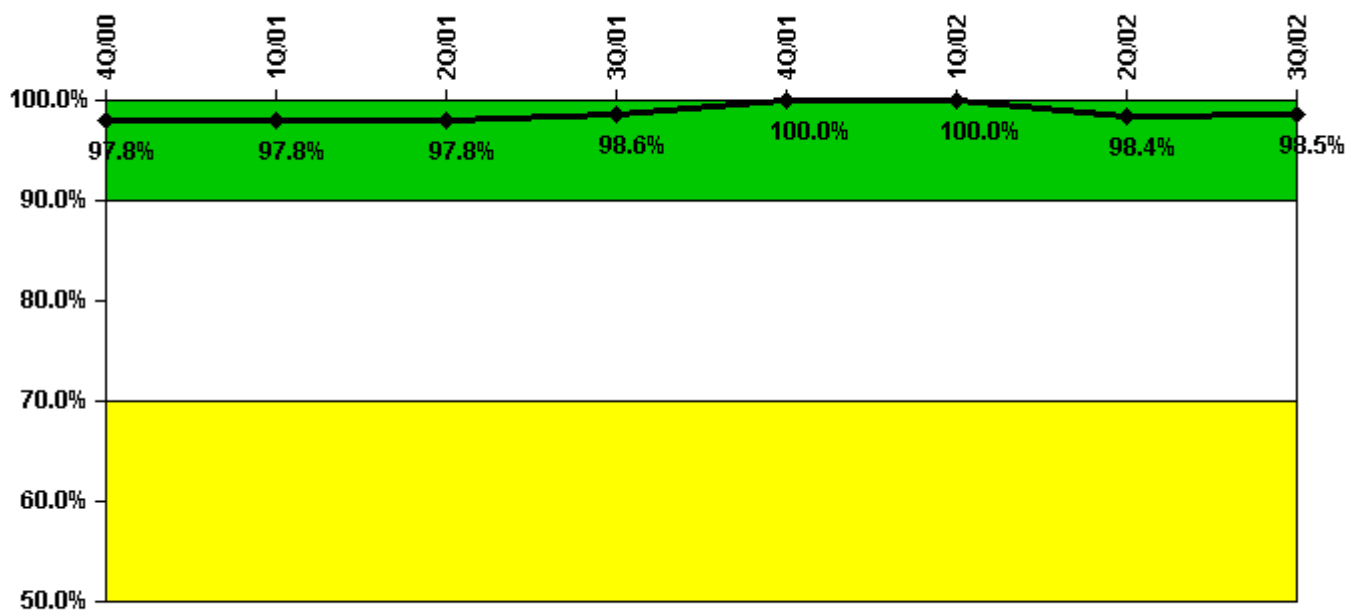
Reactor Coolant System Leakage	10/00	11/00	12/00	1/01	2/01	3/01	4/01	5/01	6/01	7/01	8/01	9/01
Maximum leakage	2.290	2.090	2.210	2.170	2.170	2.090	2.420	2.170	2.250	2.540	2.540	2.370
Technical specification limit	25.0	25.0	25.0	25.0	25.0	25.0	25.0	25.0	25.0	25.0	25.0	25.0
Indicator value	9.2	8.4	8.8	8.7	8.7	8.4	9.7	8.7	9.0	10.2	10.2	9.5

Reactor Coolant System Leakage	10/01	11/01	12/01	1/02	2/02	3/02	4/02	5/02	6/02	7/02	8/02	9/02
Maximum leakage	2.370	2.420	2.460	2.500	2.500	2.510	2.500	2.580	2.880	2.550	2.510	2.460
Technical specification limit	25.0	25.0	25.0	25.0	25.0	25.0	25.0	25.0	25.0	25.0	25.0	25.0
Indicator value	9.5	9.7	9.8	10.0	10.0	10.0	10.0	10.3	11.5	10.2	10.0	9.8

Licensee Comments: none

### Drill/Exercise Performance



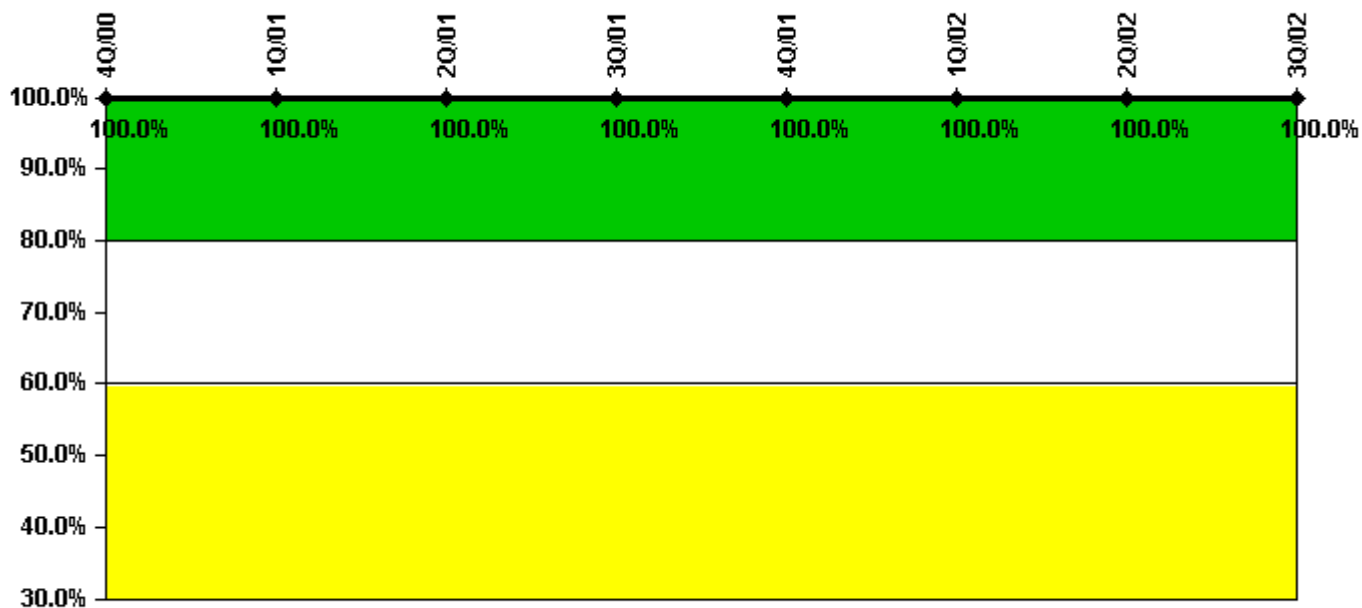
Thresholds: White < 90.0% Yellow < 70.0%

### Notes

Drill/Exercise Performance	4Q/00	1Q/01	2Q/01	3Q/01	4Q/01	1Q/02	2Q/02	3Q/02
Successful opportunities	8.0	10.0	2.0	10.0	6.0	4.0	15.0	10.0
Total opportunities	8.0	10.0	2.0	10.0	6.0	4.0	16.0	10.0
Indicator value	97.8%	97.8%	97.8%	98.6%	100.0%	100.0%	98.4%	98.5%

Licensee Comments: none

### ERO Drill Participation



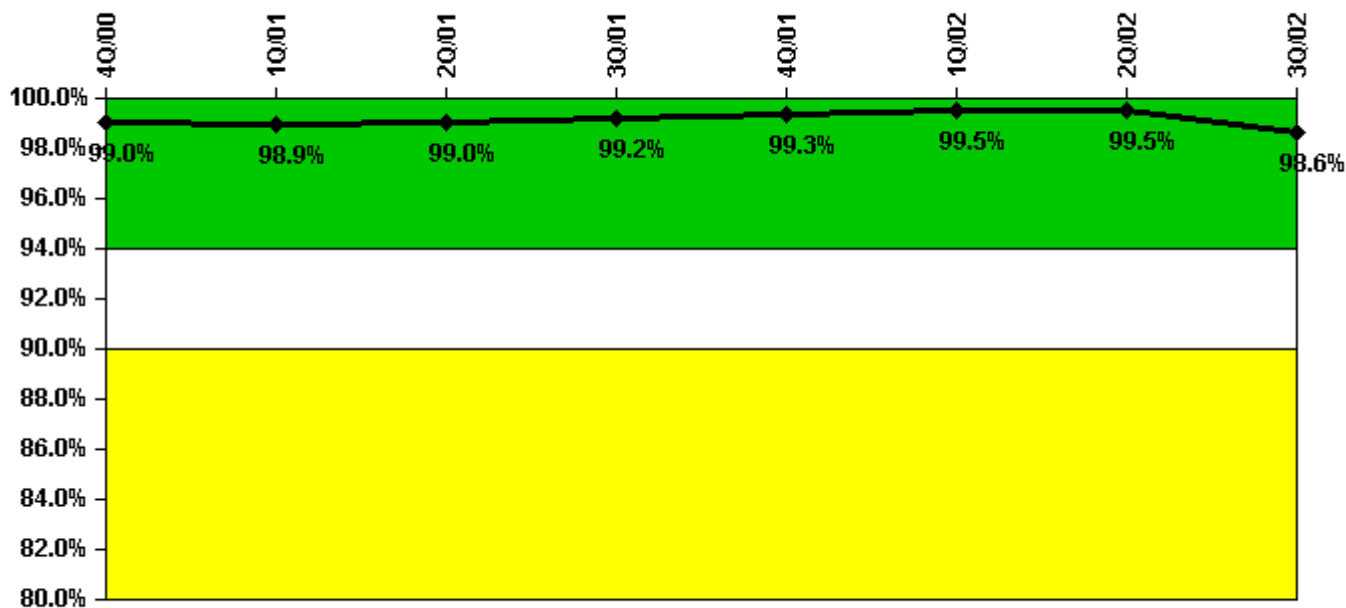
Thresholds: White < 80.0% Yellow < 60.0%

#### Notes

ERO Drill Participation	4Q/00	1Q/01	2Q/01	3Q/01	4Q/01	1Q/02	2Q/02	3Q/02
Participating Key personnel	49.0	49.0	49.0	46.0	48.0	49.0	50.0	50.0
Total Key personnel	49.0	49.0	49.0	46.0	48.0	49.0	50.0	50.0
Indicator value	100.0%	100.0%	100.0%	100.0%	100.0%	100.0%	100.0%	100.0%

Licensee Comments: none

### Alert & Notification System



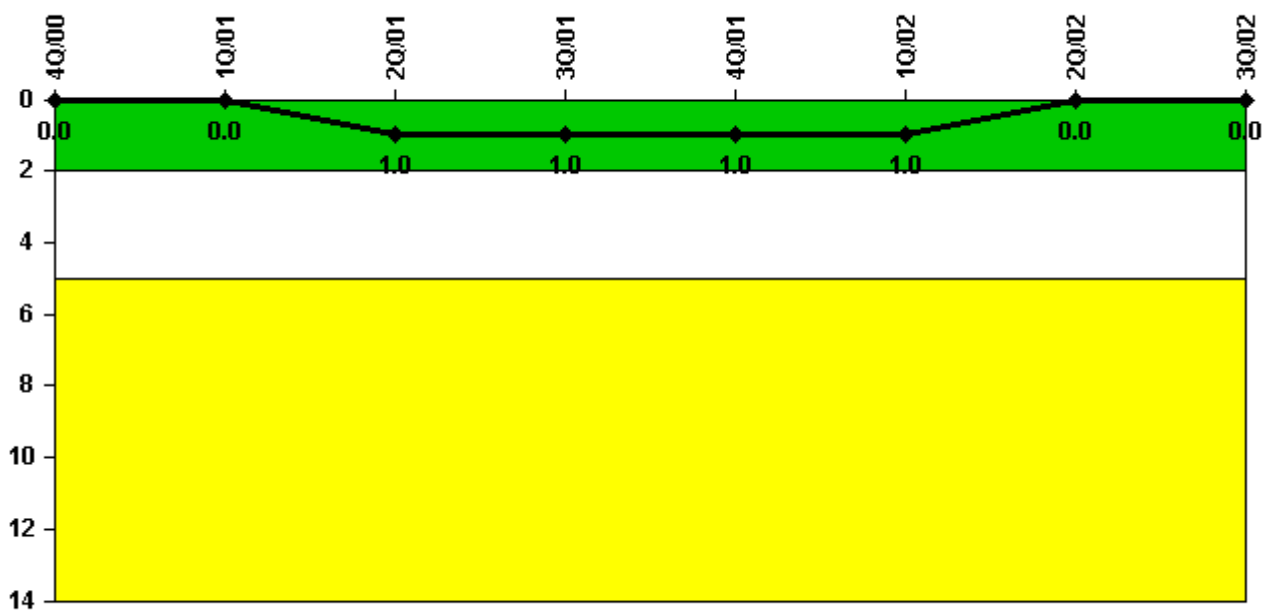
Thresholds: White < 94.0% Yellow < 90.0%

#### Notes

Alert & Notification System	4Q/00	1Q/01	2Q/01	3Q/01	4Q/01	1Q/02	2Q/02	3Q/02
Successful siren-tests	771	621	660	516	555	515	512	570
Total sirens-tests	777	629	666	518	555	518	518	592
Indicator value	99.0%	98.9%	99.0%	99.2%	99.3%	99.5%	99.5%	98.6%

Licensee Comments: none

### Occupational Exposure Control Effectiveness



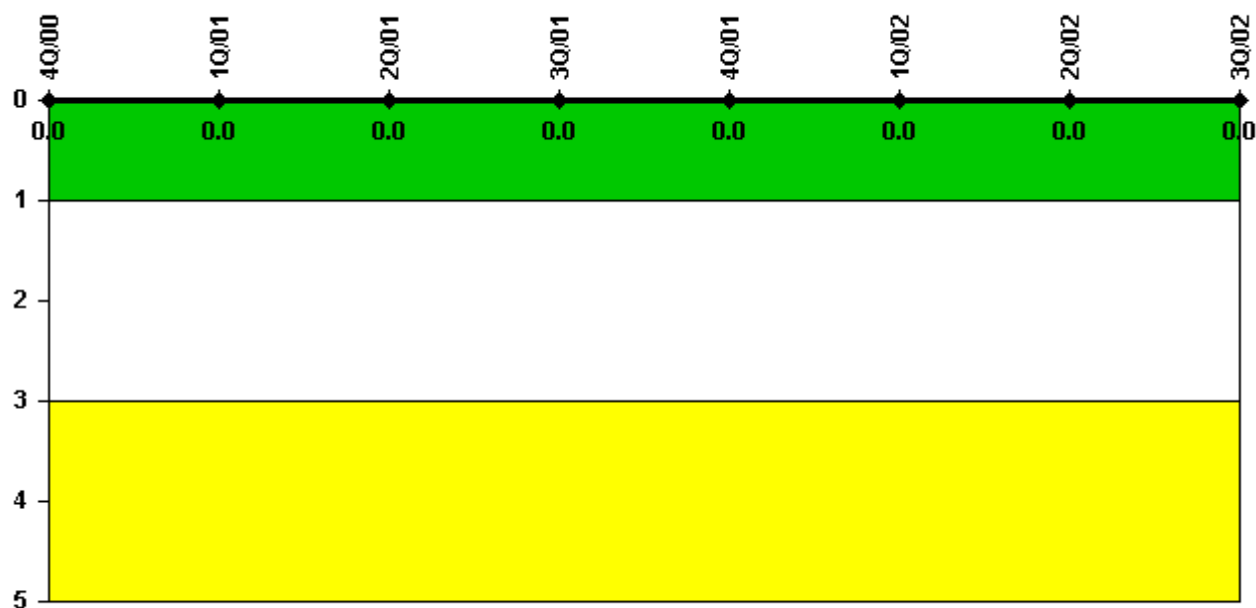
Thresholds: White > 2.0 Yellow > 5.0

#### Notes

Occupational Exposure Control Effectiveness	4Q/00	1Q/01	2Q/01	3Q/01	4Q/01	1Q/02	2Q/02	3Q/02
High radiation area occurrences	0	0	1	0	0	0	0	0
Very high radiation area occurrences	0	0	0	0	0	0	0	0
Unintended exposure occurrences	0	0	0	0	0	0	0	0
Indicator value	0	0	1	1	1	1	0	0

Licensee Comments: none

### RETS/ODCM Radiological Effluent



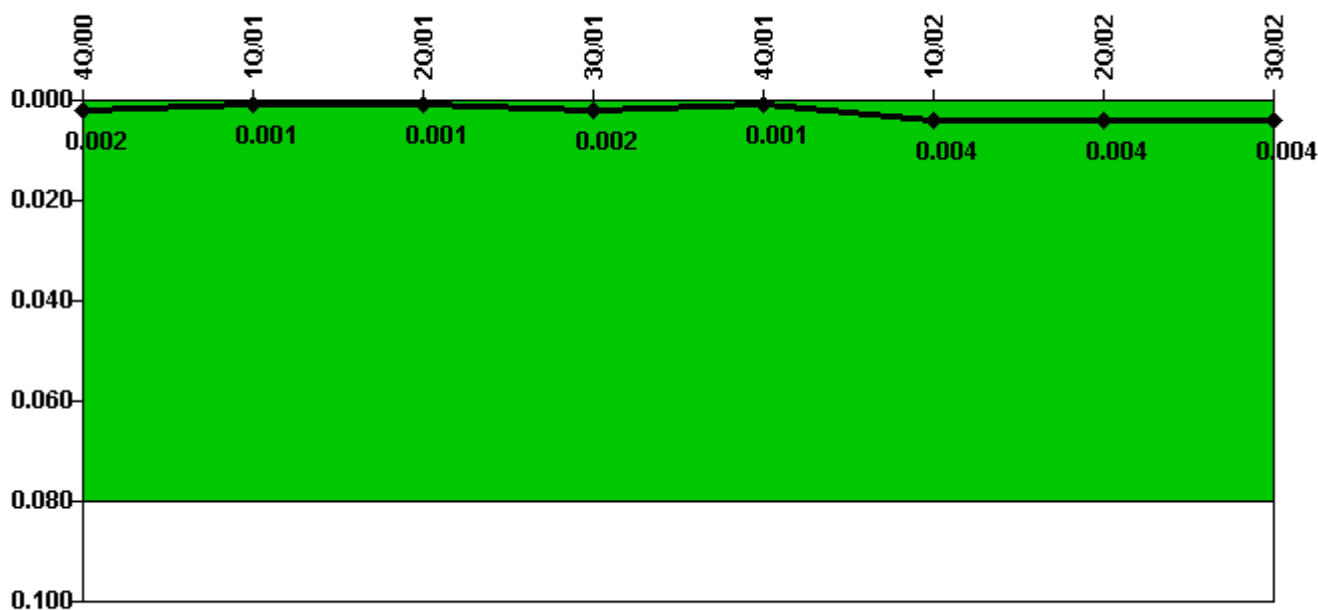
Thresholds: White > 1.0 Yellow > 3.0

#### Notes

RETS/ODCM Radiological Effluent	4Q/00	1Q/01	2Q/01	3Q/01	4Q/01	1Q/02	2Q/02	3Q/02
RETS/ODCM occurrences	0	0	0	0	0	0	0	0
Indicator value	0	0	0	0	0	0	0	0

Licensee Comments: none

### Protected Area Security Performance Index



Thresholds: White > 0.080

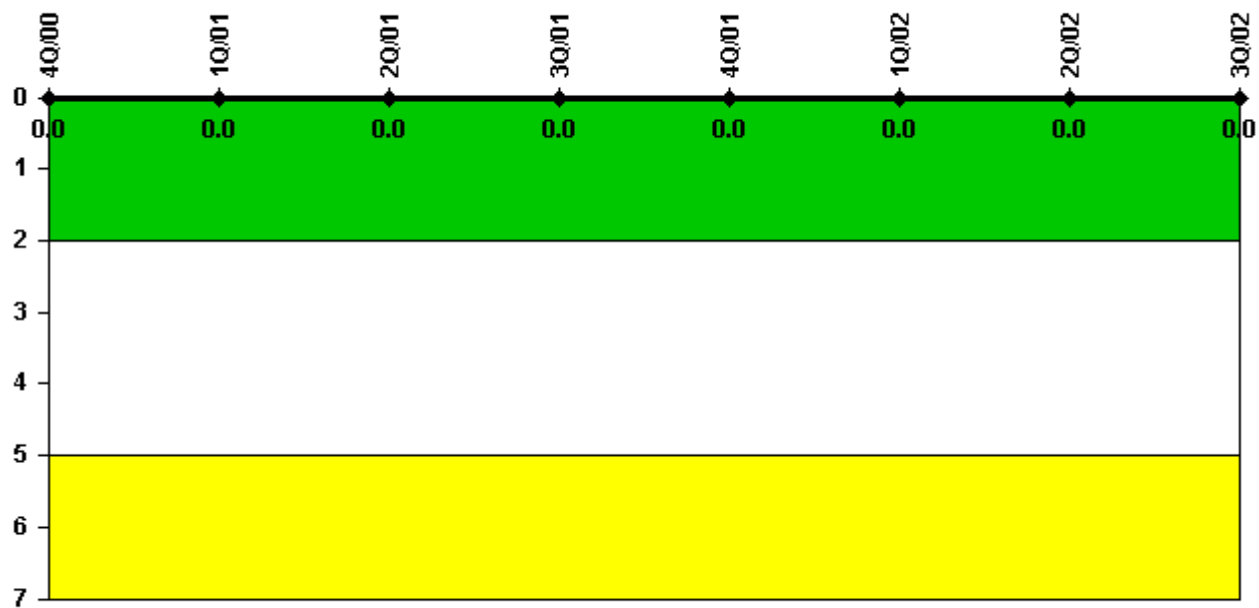
#### Notes

Protected Area Security Performance Index	4Q/00	1Q/01	2Q/01	3Q/01	4Q/01	1Q/02	2Q/02	3Q/02
IDS compensatory hours	3.70	28.70	0	5.90	0	81.70	0	3.40
CCTV compensatory hours	0	0	0	2.0	0	5.5	0	11.0
IDS normalization factor	1.50	1.50	1.50	1.50	1.50	1.50	1.50	1.50
CCTV normalization factor	1.7	1.7	1.7	1.7	1.7	1.7	1.7	1.7
Index Value	0.002	0.001	0.001	0.002	0.001	0.004	0.004	0.004

Licensee Comments: none



### Personnel Screening Program



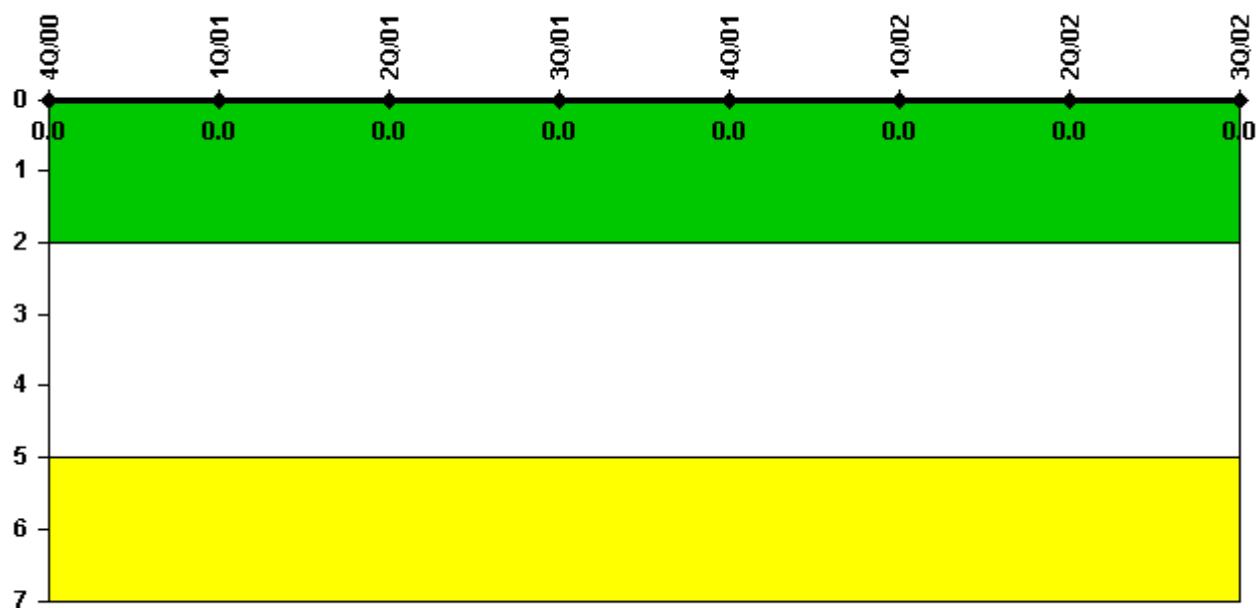
Thresholds: White > 2.0 Yellow > 5.0

#### Notes

Personnel Screening Program	4Q/00	1Q/01	2Q/01	3Q/01	4Q/01	1Q/02	2Q/02	3Q/02
Program failures	0	0	0	0	0	0	0	0
Indicator value	0	0	0	0	0	0	0	0

Licensee Comments: none

### FFD/Personnel Reliability



Thresholds: White > 2.0 Yellow > 5.0

#### Notes

FFD/Personnel Reliability	4Q/00	1Q/01	2Q/01	3Q/01	4Q/01	1Q/02	2Q/02	3Q/02
Program Failures	0	0	0	0	0	0	0	0
Indicator value	0	0	0	0	0	0	0	0

Licensee Comments: none

▲ [PI Summary](#) | [Inspection Findings Summary](#) | [Reactor Oversight Process](#)

Last Modified: October 22, 2002