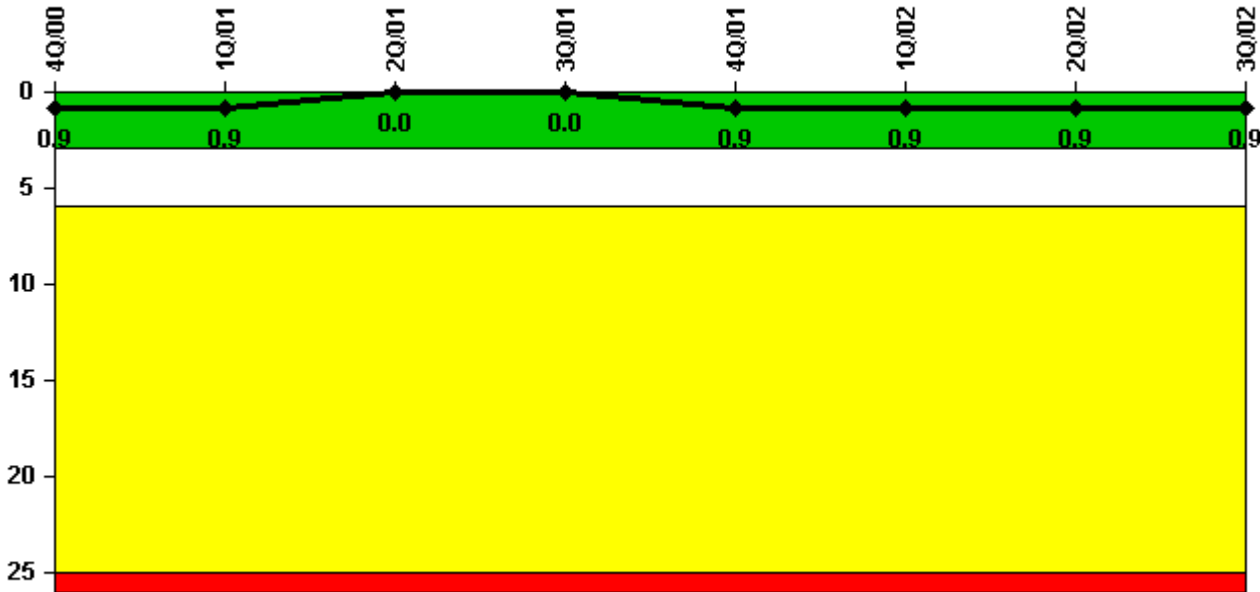


# Fermi 2

## 3Q/2002 Performance Indicators

Licensee's General Comments: none

### Unplanned Scrams per 7000 Critical Hrs



Thresholds: White > 3.0 Yellow > 6.0 Red > 25.0

### Notes

Unplanned Scrams per 7000 Critical Hrs	4Q/00	1Q/01	2Q/01	3Q/01	4Q/01	1Q/02	2Q/02	3Q/02
Unplanned scrams	0	0	0	0	1.0	0	0	0
Critical hours	2209.0	2160.0	2152.4	2208.0	1446.5	2160.0	2183.0	2208.0
Indicator value	0.9	0.9	0	0	0.9	0.9	0.9	0.9

Licensee Comments: none

### Scrams with Loss of Normal Heat Removal



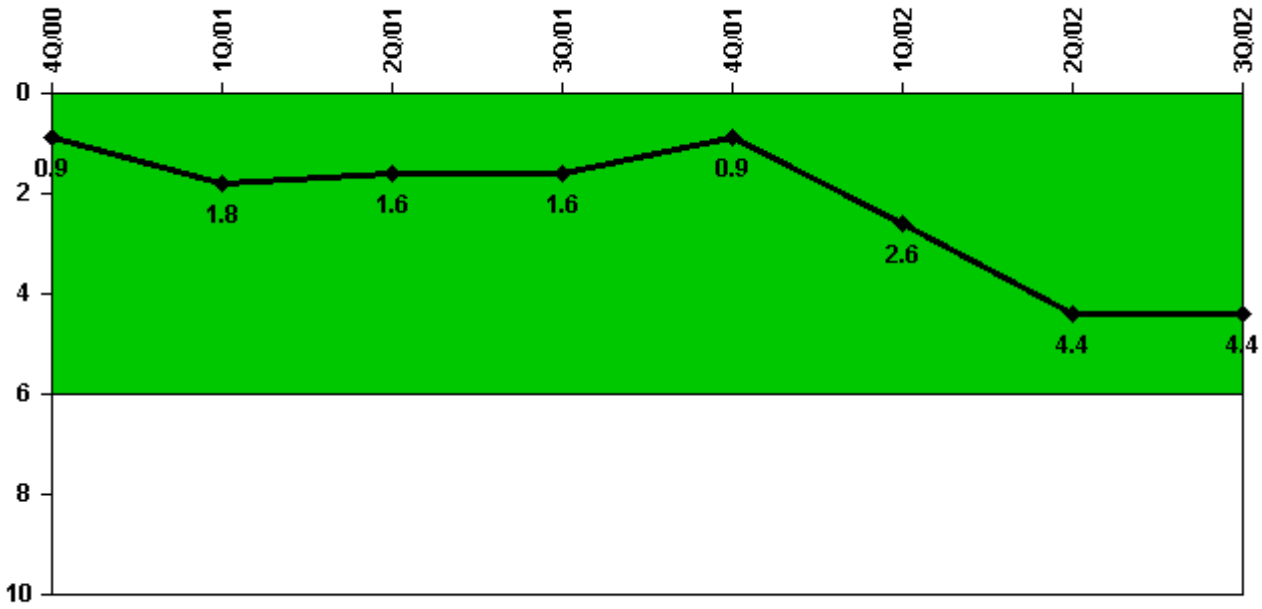
Thresholds: White > 2.0 Yellow > 10.0 Red > 20.0

#### Notes

Scrams with Loss of Normal Heat Removal	4Q/00	1Q/01	2Q/01	3Q/01	4Q/01	1Q/02	2Q/02	3Q/02
Scrams	0	0	0	0	0	0	0	0
Indicator value	0	0	0	0	0	0	0	0

Licensee Comments: none

### Unplanned Power Changes per 7000 Critical Hrs



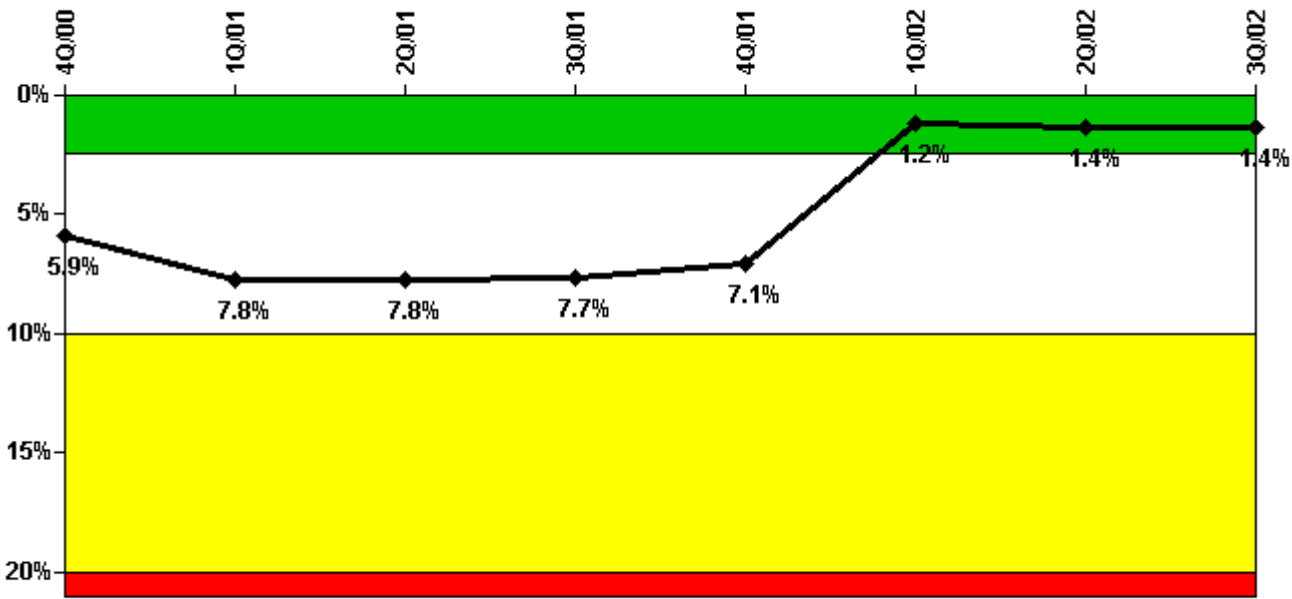
Thresholds: White > 6.0

#### Notes

Unplanned Power Changes per 7000 Critical Hrs	4Q/00	1Q/01	2Q/01	3Q/01	4Q/01	1Q/02	2Q/02	3Q/02
Unplanned power changes	1.0	1.0	0	0	0	3.0	2.0	0
Critical hours	2209.0	2160.0	2152.4	2208.0	1446.5	2160.0	2183.0	2208.0
Indicator value	0.9	1.8	1.6	1.6	0.9	2.6	4.4	4.4

Licensee Comments: none

### Safety System Unavailability, Emergency AC Power, >2EDG



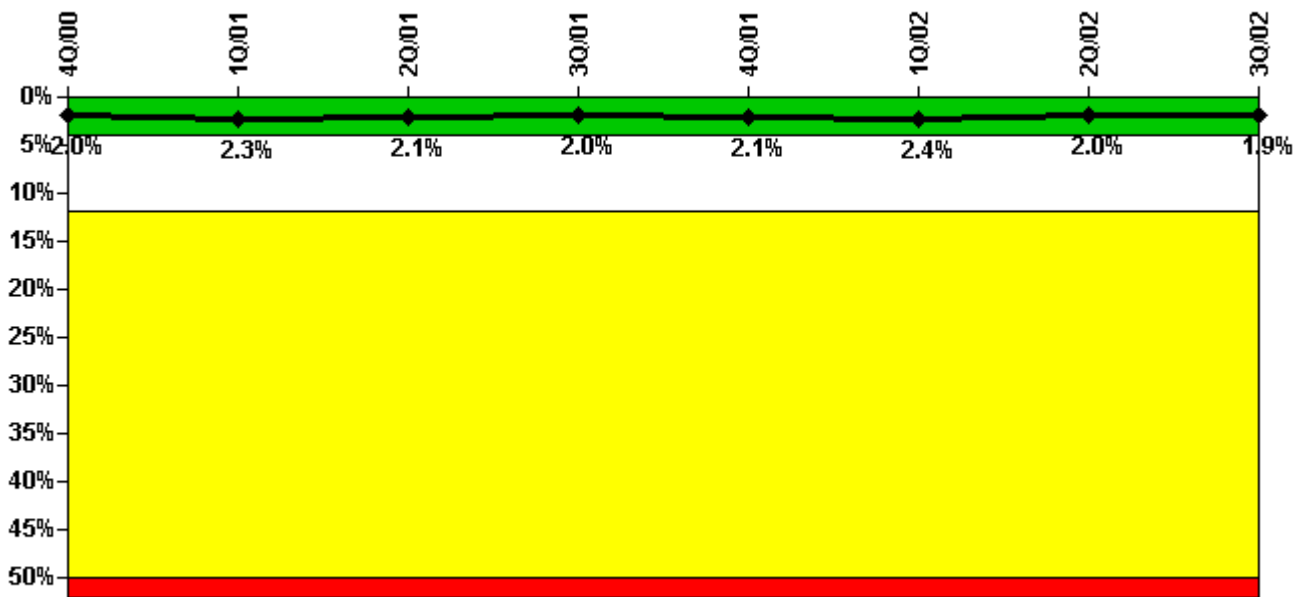
Thresholds: White > 2.5% Yellow > 10.0% Red > 20.0%

#### Notes

Safety System Unavailability, Emergency AC Power, >2EDG	4Q/00	1Q/01	2Q/01	3Q/01	4Q/01	1Q/02	2Q/02	3Q/02
<b>Train 1</b>								
Planned unavailable hours	42.19	3.47	7.86	21.92	6.47	6.00	35.65	52.76
Unplanned unavailable hours	0	0	0.82	0	0	0	0	0
Fault exposure hours	0	0	0	0	0	0	0	0
Effective Reset hours	0	0	0	0	700.76	0	0	0
Required hours	2209.00	2160.00	2183.00	2208.00	2209.00	2160.00	2183.00	2208.00
<b>Train 2</b>								
Planned unavailable hours	52.24	4.40	11.38	21.13	11.61	5.29	145.44	11.37
Unplanned unavailable hours	0	0	0.57	0	0	0	0	0
Fault exposure hours	0	0	0	0	0	0	0	0
Effective Reset hours	0	0	0	0	0	0	0	0
Required hours	2209.00	2160.00	2183.00	2208.00	2209.00	2160.00	2183.00	2208.00
<b>Train 3</b>								
Planned unavailable hours	42.56	4.46	3.32	42.65	5.79	5.82	32.67	7.72
Unplanned unavailable hours	0	0	10.60	0	0	0	8.38	1.30
Fault exposure hours	0	0	0	0	0	0	0	0
Effective Reset hours	0	0	0	0	0	0	0	0
Required hours	2209.00	2160.00	2183.00	2208.00	2209.00	2160.00	2183.00	2208.00
<b>Train 4</b>								
Planned unavailable hours	0	0	10.78	49.86	14.48	18.45	56.16	23.22
Unplanned unavailable hours	0	192.50	20.70	43.78	0	2.10	0	3.94
Fault exposure hours	2209.00	1918.15	0	0	0	0	0	0
Effective Reset hours	0	0	0	0	0	6142.70	0	0
Required hours	2209.00	2160.00	2183.00	2208.00	2209.00	2160.00	2183.00	2208.00
<b>Indicator value</b>	<b>5.9%</b>	<b>7.8%</b>	<b>7.8%</b>	<b>7.7%</b>	<b>7.1%</b>	<b>1.2%</b>	<b>1.4%</b>	<b>1.4%</b>

Licensee Comments: none

### Safety System Unavailability, High Pressure Injection System (HPCI)



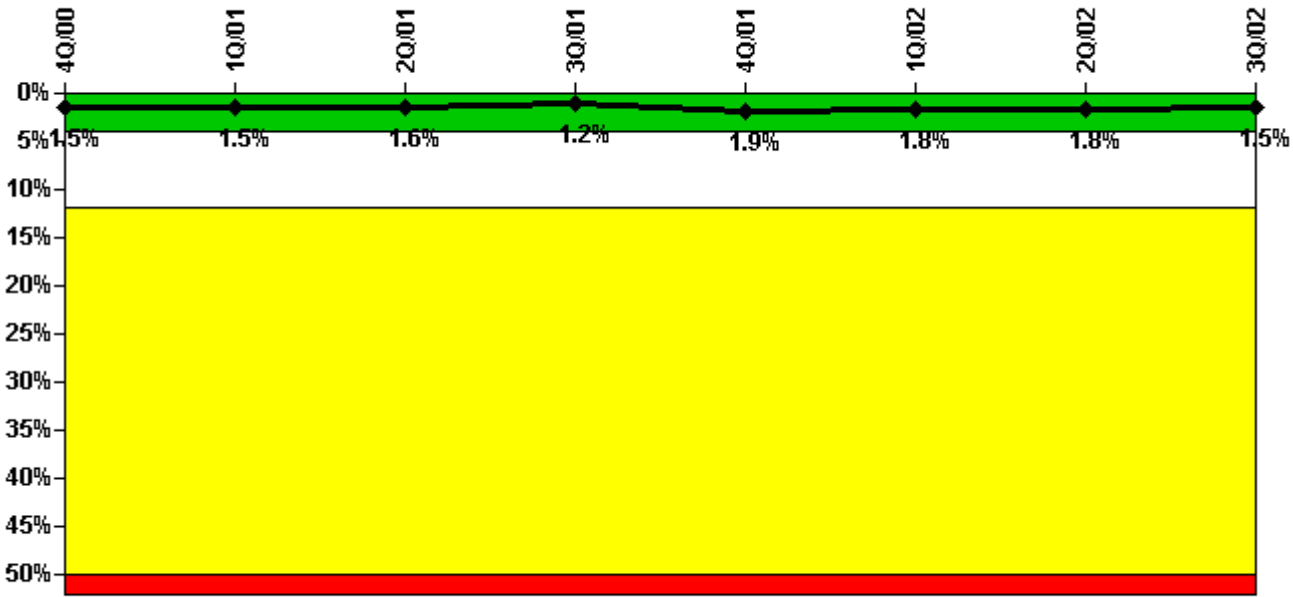
Thresholds: White > 4.0% Yellow > 12.0% Red > 50.0%

#### Notes

Safety System Unavailability, High Pressure Injection System (HPCI)	4Q/00	1Q/01	2Q/01	3Q/01	4Q/01	1Q/02	2Q/02	3Q/02
Train 1								
Planned unavailable hours	11.25	70.02	14.88	2.20	9.69	85.05	21.45	3.13
Unplanned unavailable hours	0	27.53	27.33	0	27.16	15.31	0	0
Fault exposure hours	0	0	0	0	0	0	0	0
Effective Reset hours	0	0	0	0	0	0	0	0
Required hours	2209.00	2160.00	2152.40	2208.00	1446.50	2160.00	2183.00	2208.00
Indicator value	2.0%	2.3%	2.1%	2.0%	2.1%	2.4%	2.0%	1.9%

Licensee Comments: none

### Safety System Unavailability, Heat Removal System (RCIC)



Thresholds: White > 4.0% Yellow > 12.0% Red > 50.0%

#### Notes

Safety System Unavailability, Heat Removal System (RCIC)	4Q/00	1Q/01	2Q/01	3Q/01	4Q/01	1Q/02	2Q/02	3Q/02
Train 1								
Planned unavailable hours	7.90	1.70	8.50	2.38	161.85	37.45	1.98	2.83
Unplanned unavailable hours	0	9.10	59.10	0	10.35	2.87	0	0
Fault exposure hours	0	0	0	0	0	0	0	0
Effective Reset hours	0	0	0	0	0	0	0	0
Required hours	2209.00	2160.00	2152.40	2208.00	1446.50	2160.00	2183.00	2208.00
Indicator value	1.5%	1.5%	1.6%	1.2%	1.9%	1.8%	1.8%	1.5%

Licensee Comments:

3Q/02: Q32002- Hours originally reported for 5/2002 changed to 6/2002 following licensee internal review . Quarterly sum and indicator status are unaffected.

### Safety System Unavailability, Residual Heat Removal System



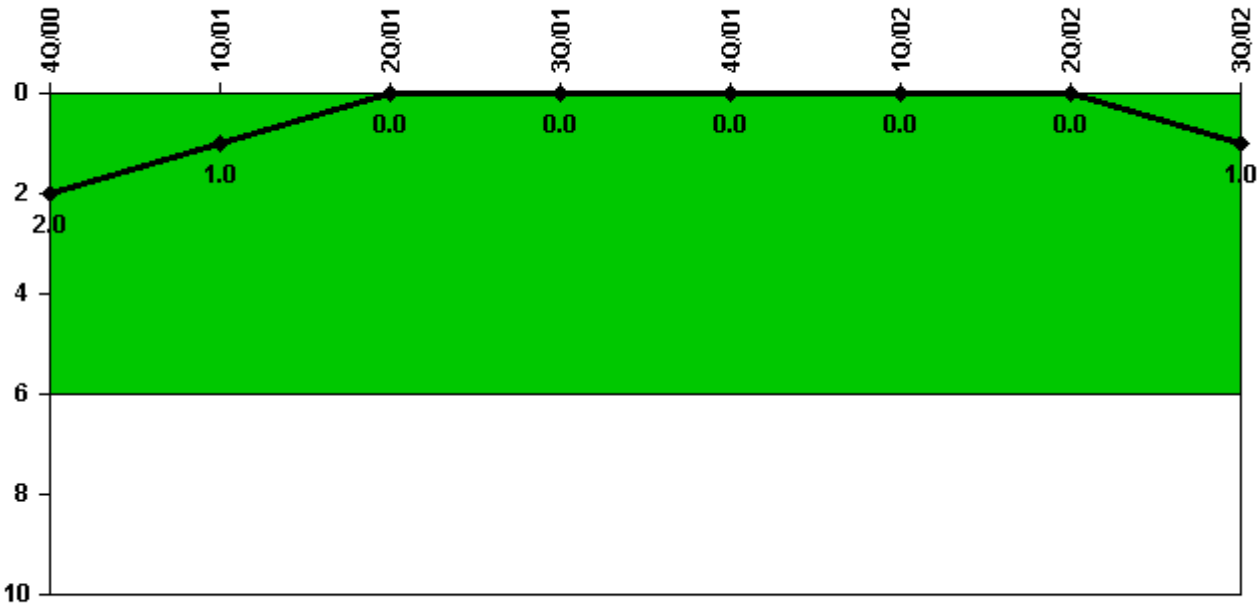
Thresholds: White > 1.5% Yellow > 5.0% Red > 10.0%

#### Notes

Safety System Unavailability, Residual Heat Removal System	4Q/00	1Q/01	2Q/01	3Q/01	4Q/01	1Q/02	2Q/02	3Q/02
<b>Train 1</b>								
Planned unavailable hours	1.47	2.88	1.22	22.17	4.43	2.10	0.67	19.08
Unplanned unavailable hours	0	0	0	0	0	0	0	0
Fault exposure hours	0	0	0	0	0	0	0	0
Effective Reset hours	0	0	0	0	0	0	0	0
Required hours	2209.00	2160.00	2183.00	2208.00	2209.00	2160.00	2183.00	2208.00
<b>Train 2</b>								
Planned unavailable hours	1.53	1.87	0.92	13.75	0	12.66	17.74	1.20
Unplanned unavailable hours	0	0	0	0	0	0	0	0
Fault exposure hours	0	0	0	0	0	0	0	0
Effective Reset hours	0	0	0	0	0	0	0	0
Required hours	2209.00	2160.00	2183.00	2208.00	2209.00	2160.00	2183.00	2208.00
<b>Indicator value</b>	<b>0.8%</b>	<b>0.8%</b>	<b>0.7%</b>	<b>0.7%</b>	<b>0.7%</b>	<b>0.7%</b>	<b>0.7%</b>	<b>0.7%</b>

Licensee Comments: none

### Safety System Functional Failures (BWR)



Thresholds: White > 6.0

#### Notes

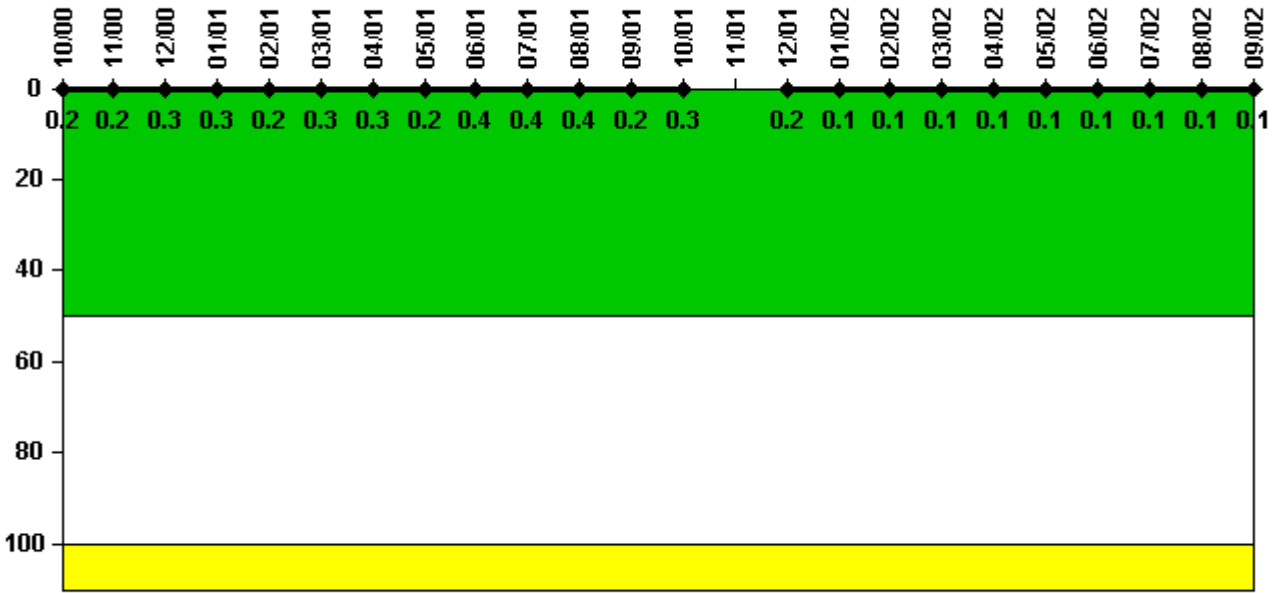
Safety System Functional Failures (BWR)	4Q/00	1Q/01	2Q/01	3Q/01	4Q/01	1Q/02	2Q/02	3Q/02
Safety System Functional Failures	0	0	0	0	0	0	0	1
Indicator value	2	1	0	0	0	0	0	1

Licensee Comments:

3Q/02: 3Q2002- LER 02003, Breach of Control Room Emergency Filtration System {CREF} ductwork integrity.



### Reactor Coolant System Activity



Thresholds: White > 50.0 Yellow > 100.0

#### Notes

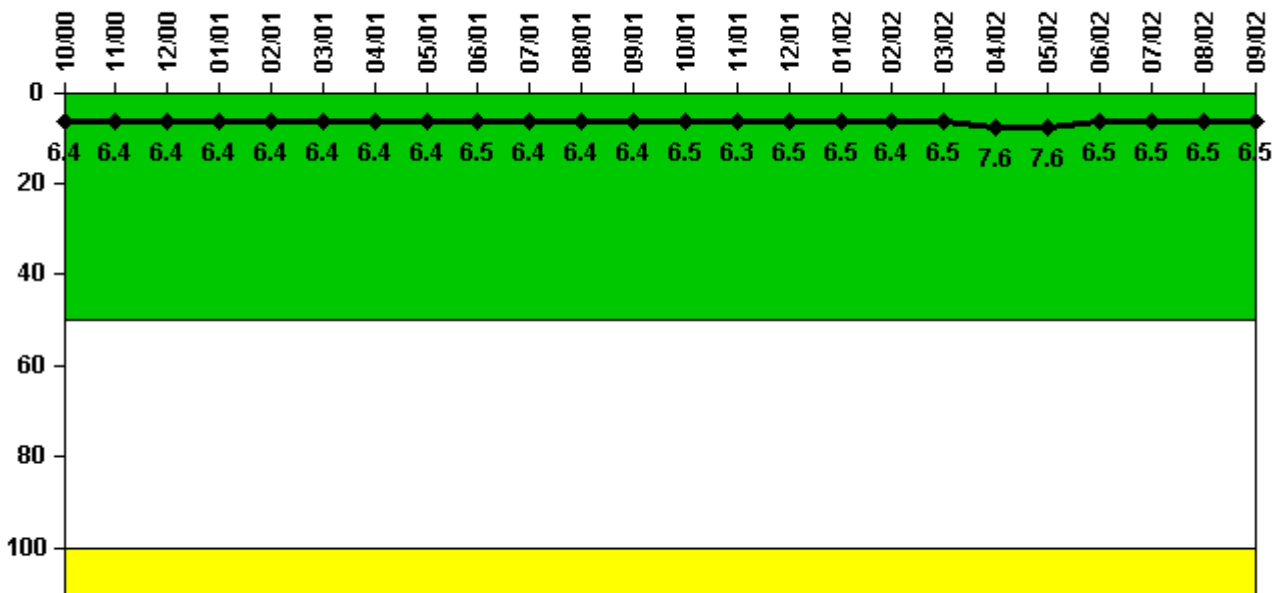
Reactor Coolant System Activity	10/00	11/00	12/00	1/01	2/01	3/01	4/01	5/01	6/01	7/01	8/01	9/01
Maximum activity	0.000475	0.000481	0.000510	0.000683	0.000488	0.000602	0.000609	0.000436	0.000826	0.000739	0.000703	0.000425
Technical specification limit	0.2	0.2	0.2	0.2	0.2	0.2	0.2	0.2	0.2	0.2	0.2	0.2
Indicator value	0.2	0.2	0.3	0.3	0.2	0.3	0.3	0.2	0.4	0.4	0.4	0.2

Reactor Coolant System Activity	10/01	11/01	12/01	1/02	2/02	3/02	4/02	5/02	6/02	7/02	8/02	9/02
Maximum activity	0.000641	N/A	0.000373	0.000267	0.000201	0.000291	0.000174	0.000178	0.000198	0.000208	0.000184	0.000196
Technical specification limit	0.2	0.2	0.2	0.2	0.2	0.2	0.2	0.2	0.2	0.2	0.2	0.2
Indicator value	0.3	N/A	0.2	0.1	0.1	0.1	0.1	0.1	0.1	0.1	0.1	0.1

Licensee Comments: none

### Reactor Coolant System Leakage



Thresholds: White > 50.0 Yellow > 100.0

#### Notes

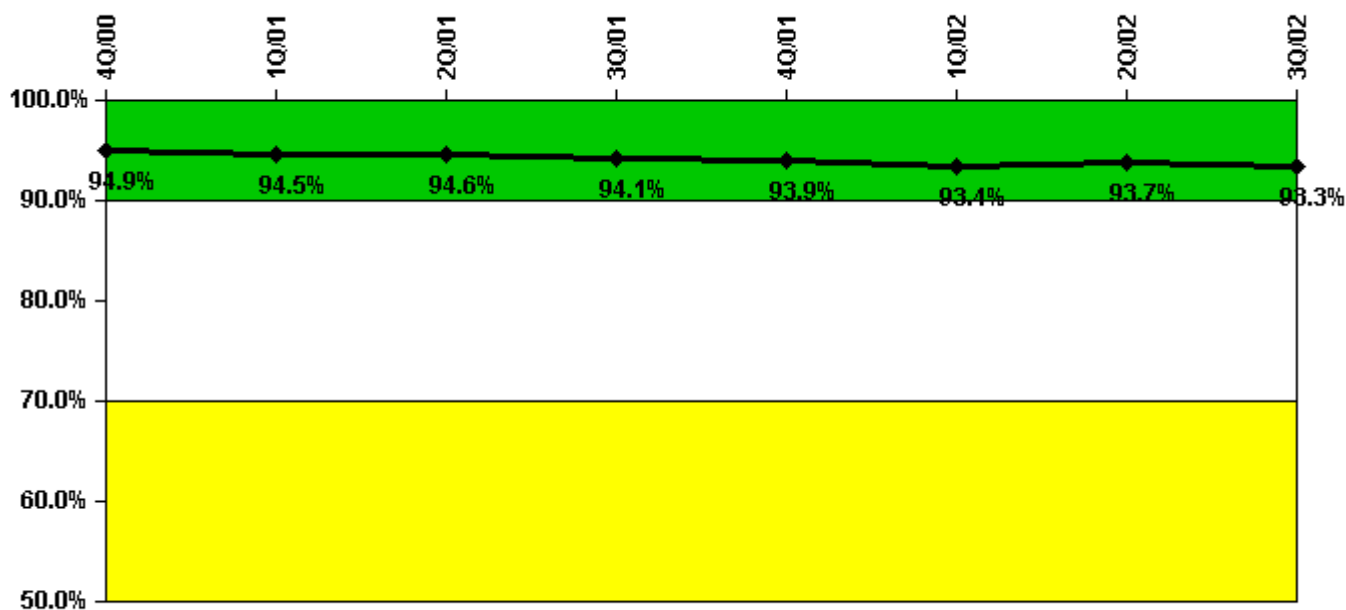
Reactor Coolant System Leakage	10/00	11/00	12/00	1/01	2/01	3/01	4/01	5/01	6/01	7/01	8/01	9/01
Maximum leakage	1.610	1.610	1.610	1.610	1.610	1.610	1.610	1.610	1.620	1.610	1.610	1.610
Technical specification limit	25.0	25.0	25.0	25.0	25.0	25.0	25.0	25.0	25.0	25.0	25.0	25.0
Indicator value	6.4	6.4	6.4	6.4	6.4	6.4	6.4	6.4	6.5	6.4	6.4	6.4

Reactor Coolant System Leakage	10/01	11/01	12/01	1/02	2/02	3/02	4/02	5/02	6/02	7/02	8/02	9/02
Maximum leakage	1.630	1.570	1.630	1.620	1.610	1.630	1.900	1.890	1.630	1.630	1.620	1.630
Technical specification limit	25.0	25.0	25.0	25.0	25.0	25.0	25.0	25.0	25.0	25.0	25.0	25.0
Indicator value	6.5	6.3	6.5	6.5	6.4	6.5	7.6	7.6	6.5	6.5	6.5	6.5

Licensee Comments: none

### Drill/Exercise Performance



Thresholds: White < 90.0% Yellow < 70.0%

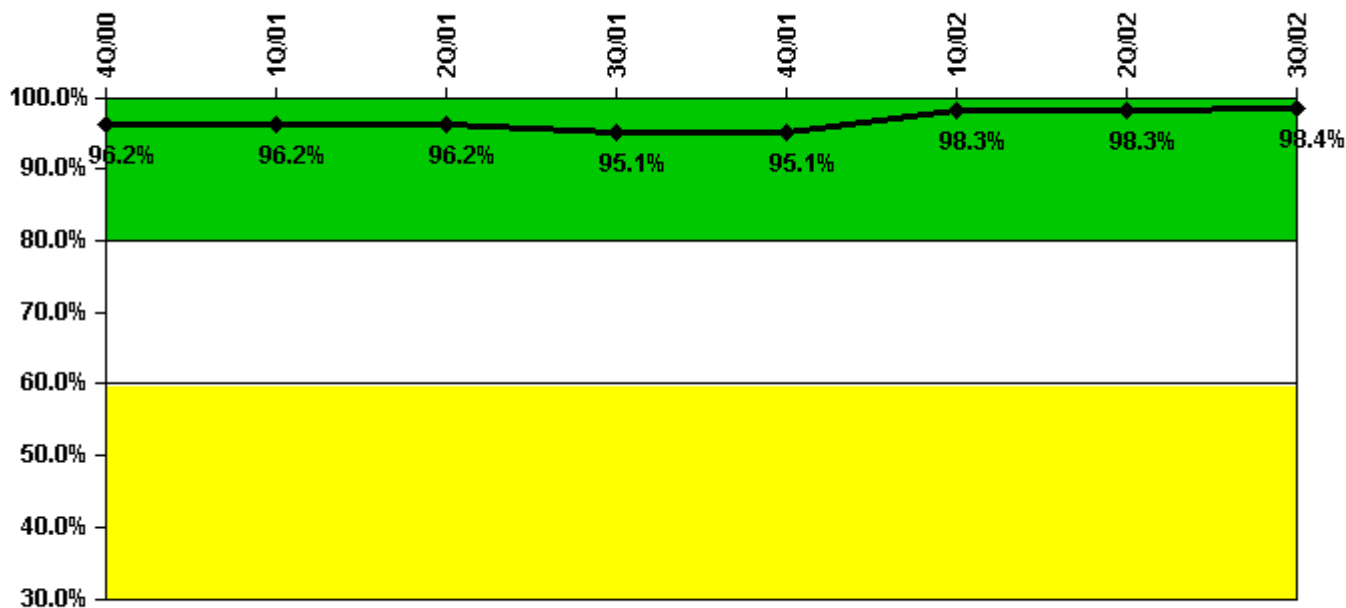
#### Notes

Drill/Exercise Performance	4Q/00	1Q/01	2Q/01	3Q/01	4Q/01	1Q/02	2Q/02	3Q/02
Successful opportunities	51.0	21.0	30.0	33.0	0	42.0	51.0	145.0
Total opportunities	56.0	23.0	32.0	38.0	0	46.0	51.0	154.0
Indicator value	94.9%	94.5%	94.6%	94.1%	93.9%	93.4%	93.7%	93.3%

Licensee Comments:

3Q/02: 3Q2002- June 2002 DEP data revised following re-analysis of 6/11/02 drill. Indicator status not affected.

### ERO Drill Participation



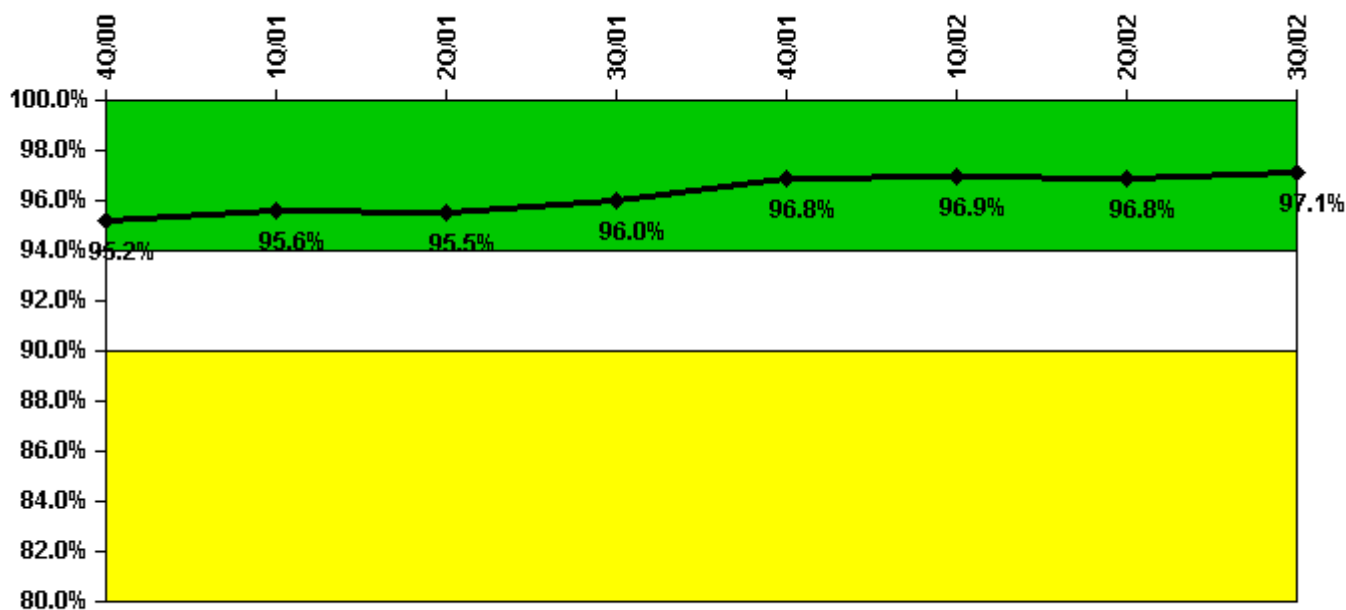
Thresholds: White < 80.0% Yellow < 60.0%

**Notes**

ERO Drill Participation	4Q/00	1Q/01	2Q/01	3Q/01	4Q/01	1Q/02	2Q/02	3Q/02
Participating Key personnel	51.0	51.0	51.0	58.0	58.0	59.0	58.0	61.0
Total Key personnel	53.0	53.0	53.0	61.0	61.0	60.0	59.0	62.0
Indicator value	96.2%	96.2%	96.2%	95.1%	95.1%	98.3%	98.3%	98.4%

Licensee Comments: none

### Alert & Notification System



Thresholds: White < 94.0% Yellow < 90.0%

#### Notes

Alert & Notification System	4Q/00	1Q/01	2Q/01	3Q/01	4Q/01	1Q/02	2Q/02	3Q/02
Successful siren-tests	338	342	342	338	348	344	341	198
Total sirens-tests	354	354	354	354	354	354	354	206
Indicator value	95.2%	95.6%	95.5%	96.0%	96.8%	96.9%	96.8%	97.1%

Licensee Comments:

3Q/02: 3Q2002- Siren upgrade in progress, data includes combination of old and new siren tests.

### Occupational Exposure Control Effectiveness



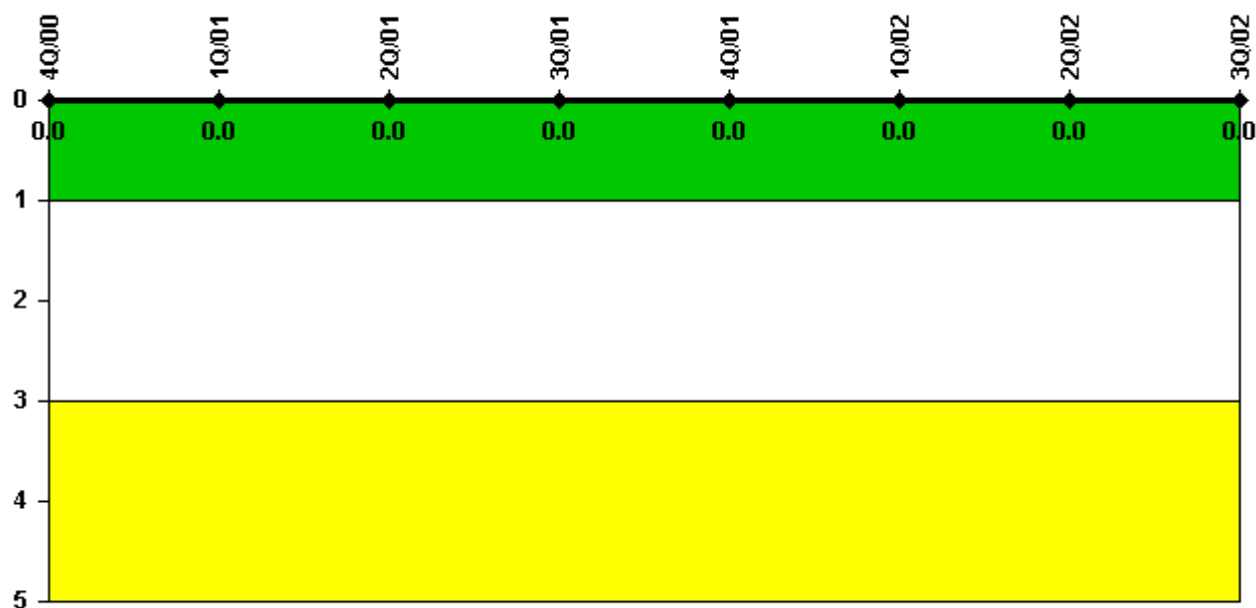
Thresholds: White > 2.0 Yellow > 5.0

#### Notes

Occupational Exposure Control Effectiveness	4Q/00	1Q/01	2Q/01	3Q/01	4Q/01	1Q/02	2Q/02	3Q/02
High radiation area occurrences	0	0	0	0	0	0	0	0
Very high radiation area occurrences	0	0	0	0	0	0	0	0
Unintended exposure occurrences	0	0	0	0	0	0	0	0
Indicator value	0	0	0	0	0	0	0	0

Licensee Comments: none

### RETS/ODCM Radiological Effluent



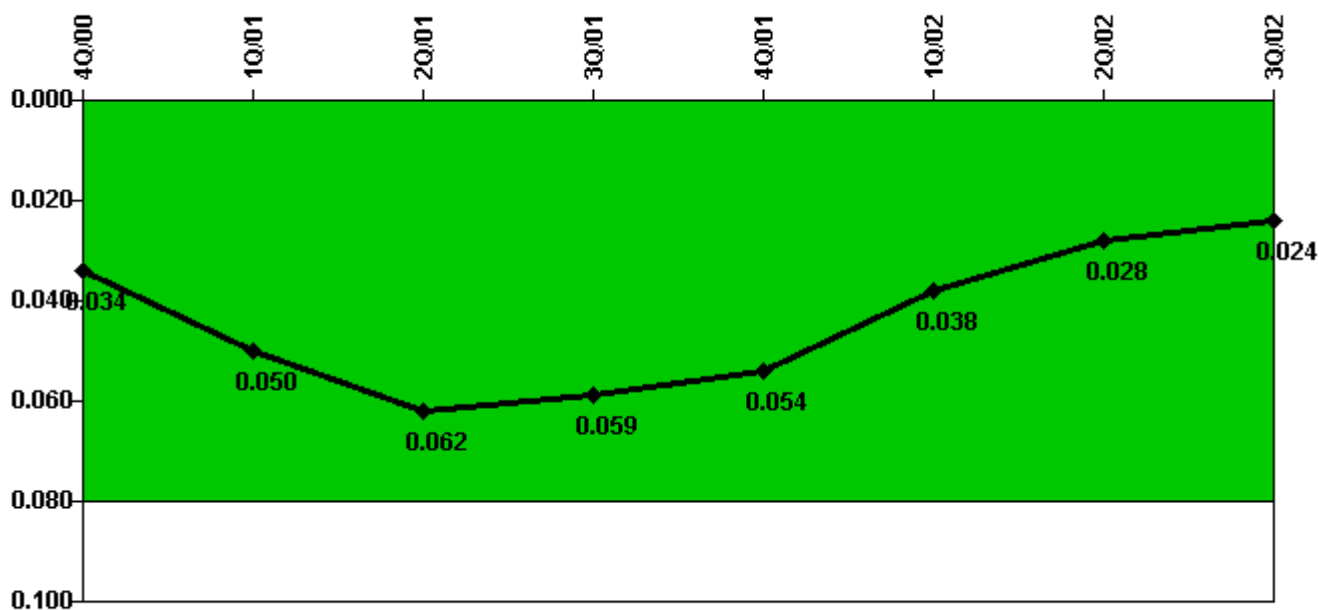
Thresholds: White > 1.0 Yellow > 3.0

#### Notes

RETS/ODCM Radiological Effluent	4Q/00	1Q/01	2Q/01	3Q/01	4Q/01	1Q/02	2Q/02	3Q/02
RETS/ODCM occurrences	0	0	0	0	0	0	0	0
Indicator value	0	0	0	0	0	0	0	0

Licensee Comments: none

### Protected Area Security Performance Index



Thresholds: White > 0.080

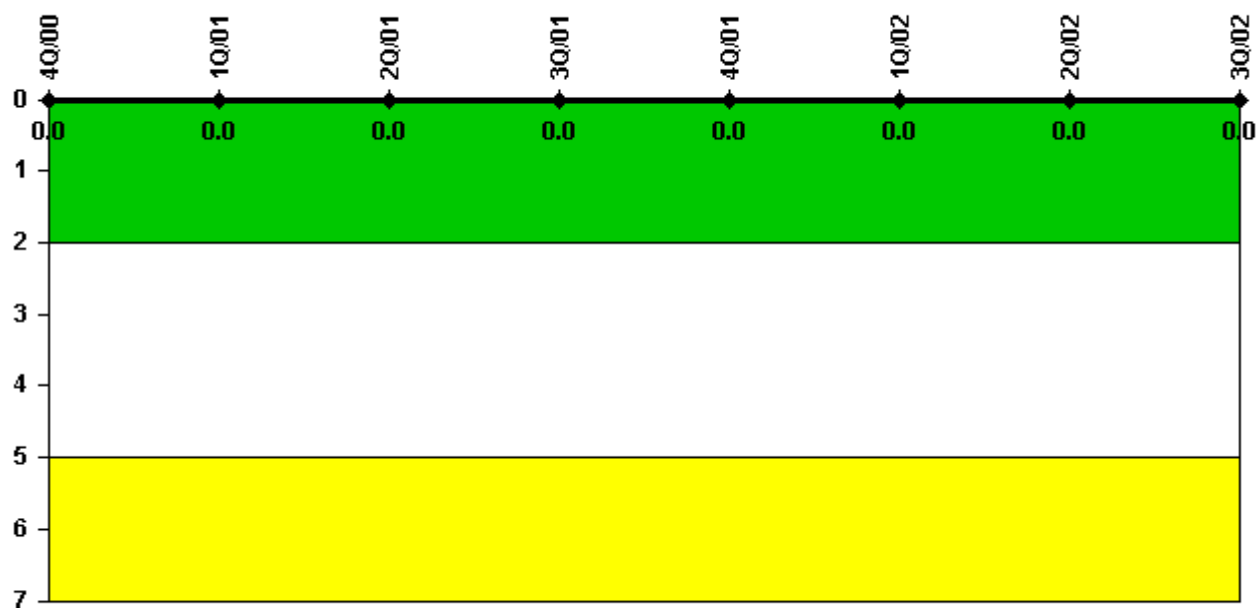
#### Notes

Protected Area Security Performance Index	4Q/00	1Q/01	2Q/01	3Q/01	4Q/01	1Q/02	2Q/02	3Q/02
IDS compensatory hours	180.50	417.17	388.05	281.75	197.80	237.63	161.07	142.80
CCTV compensatory hours	98.6	188.1	78.9	1.0	0.5	4.5	18.6	7.9
IDS normalization factor	1.90	1.90	1.90	1.90	1.90	1.90	1.90	1.90
CCTV normalization factor	1.0	1.0	1.0	1.0	1.0	1.0	1.0	1.0
Index Value	0.034	0.050	0.062	0.059	0.054	0.038	0.028	0.024

Licensee Comments: none



### Personnel Screening Program



Thresholds: White > 2.0 Yellow > 5.0

#### Notes

Personnel Screening Program	4Q/00	1Q/01	2Q/01	3Q/01	4Q/01	1Q/02	2Q/02	3Q/02
Program failures	0	0	0	0	0	0	0	0
Indicator value	0	0	0	0	0	0	0	0

Licensee Comments: none

### FFD/Personnel Reliability



Thresholds: White > 2.0 Yellow > 5.0

#### Notes

FFD/Personnel Reliability	4Q/00	1Q/01	2Q/01	3Q/01	4Q/01	1Q/02	2Q/02	3Q/02
Program Failures	0	0	0	0	0	0	0	0
Indicator value	0	0	0	0	0	0	0	0

Licensee Comments: none

▲ [PI Summary](#) | [Inspection Findings Summary](#) | [Reactor Oversight Process](#)

Last Modified: October 22, 2002