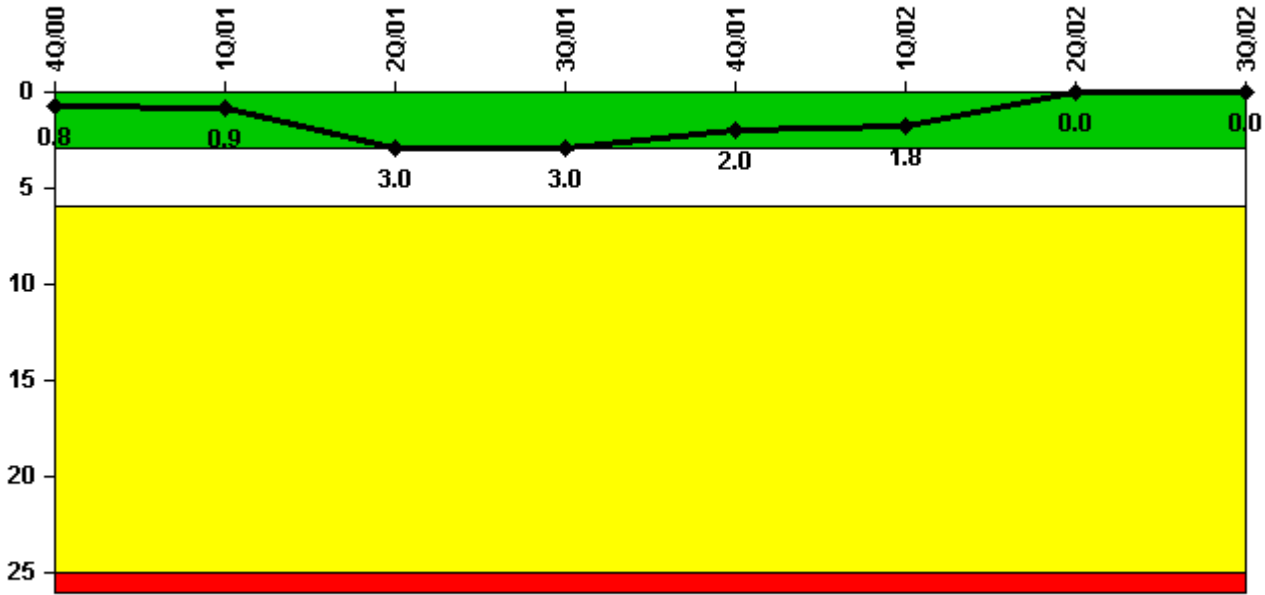


Farley 2

3Q/2002 Performance Indicators

Licensee's General Comments: none

Unplanned Scrams per 7000 Critical Hrs



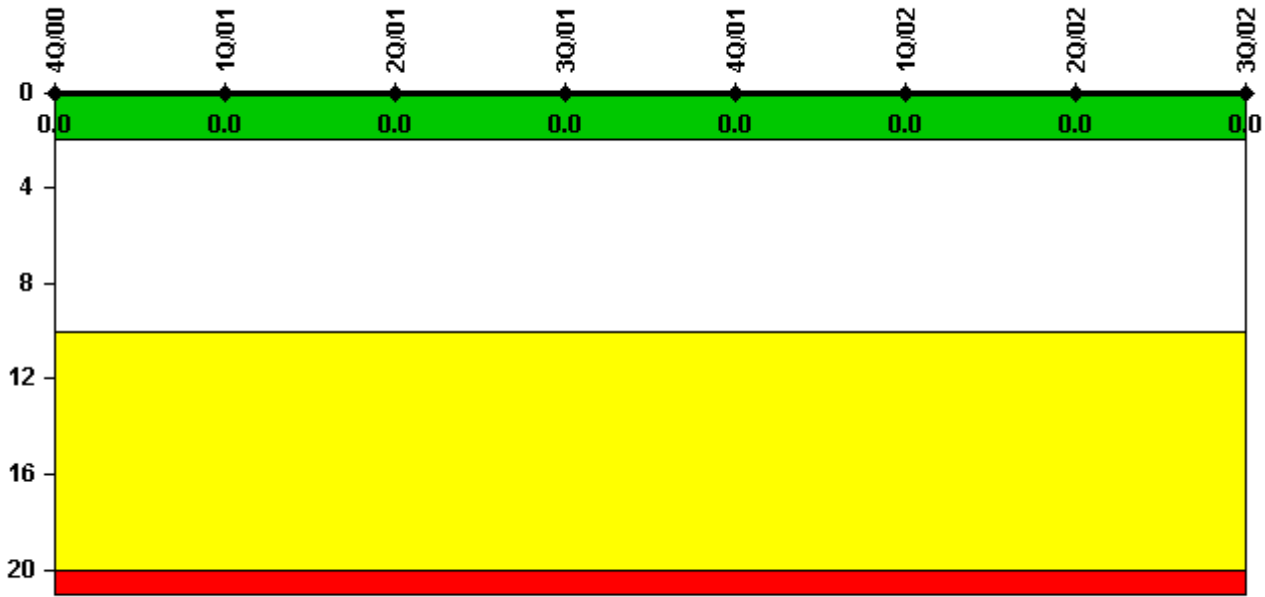
Thresholds: White > 3.0 Yellow > 6.0 Red > 25.0

Notes

Unplanned Scrams per 7000 Critical Hrs	4Q/00	1Q/01	2Q/01	3Q/01	4Q/01	1Q/02	2Q/02	3Q/02
Unplanned scrams	1.0	0	2.0	0	0	0	0	0
Critical hours	2175.7	1296.8	1262.3	2208.0	2209.0	2160.0	2183.0	1801.1
Indicator value	0.8	0.9	3.0	3.0	2.0	1.8	0	0

Licensee Comments: none

Scrams with Loss of Normal Heat Removal



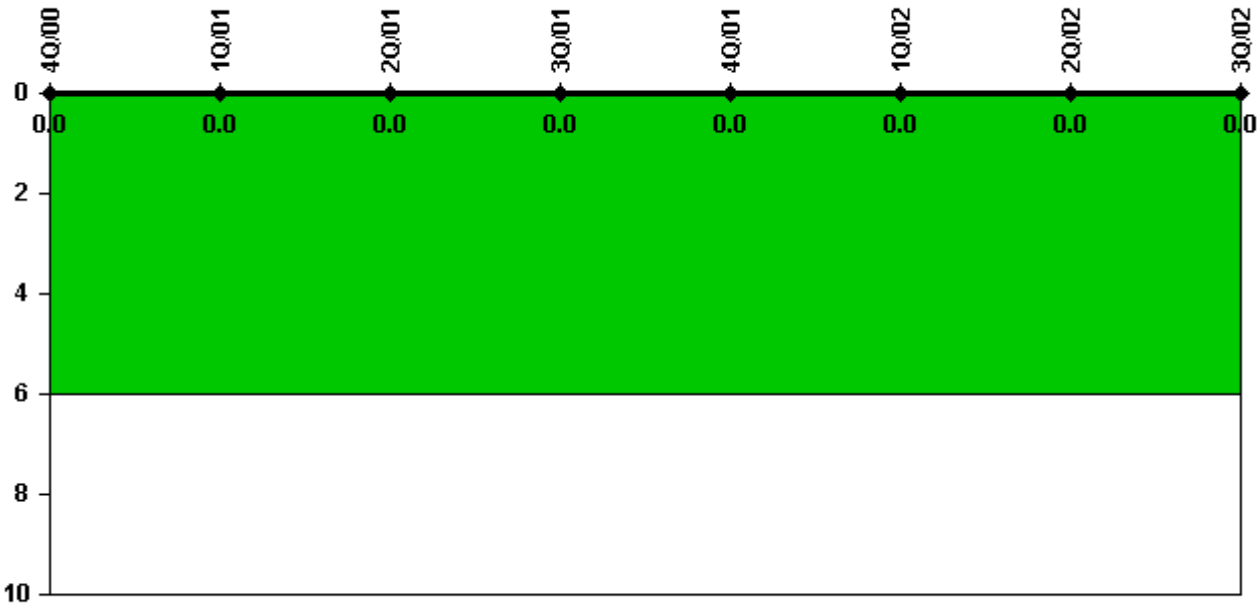
Thresholds: White > 2.0 Yellow > 10.0 Red > 20.0

Notes

Scrams with Loss of Normal Heat Removal	4Q/00	1Q/01	2Q/01	3Q/01	4Q/01	1Q/02	2Q/02	3Q/02
Scrams	0	0	0	0	0	0	0	0
Indicator value	0	0	0	0	0	0	0	0

Licensee Comments: none

Unplanned Power Changes per 7000 Critical Hrs



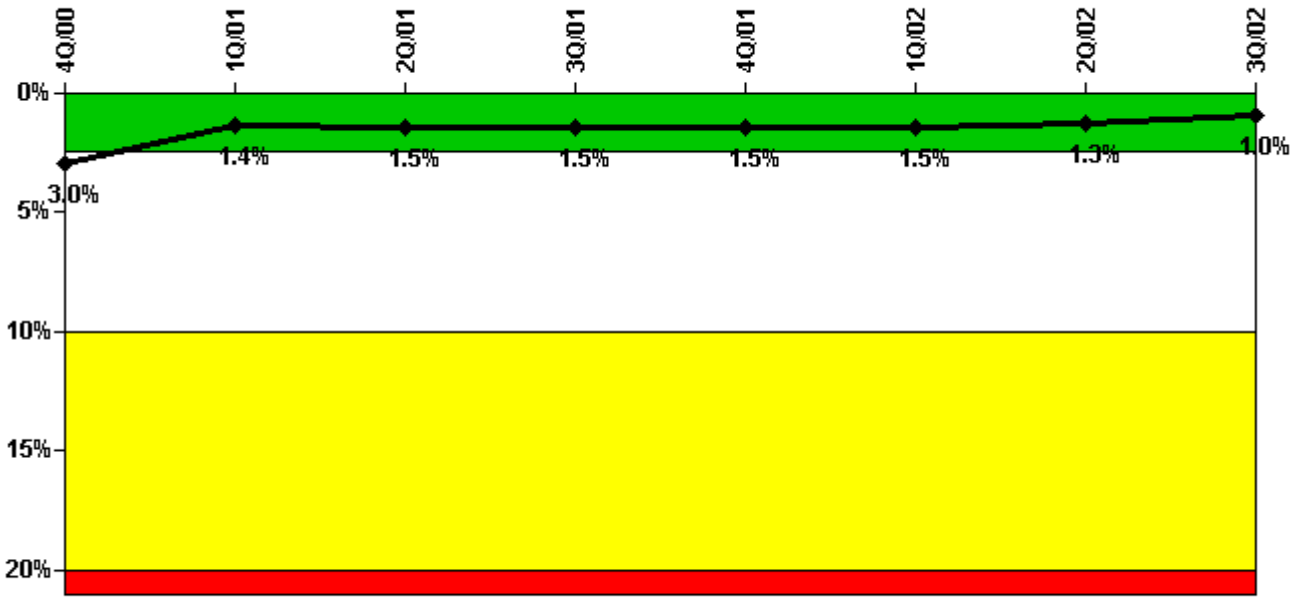
Thresholds: White > 6.0

Notes

Unplanned Power Changes per 7000 Critical Hrs	4Q/00	1Q/01	2Q/01	3Q/01	4Q/01	1Q/02	2Q/02	3Q/02
Unplanned power changes	0	0	0	0	0	0	0	0
Critical hours	2175.7	1296.8	1262.3	2208.0	2209.0	2160.0	2183.0	1801.1
Indicator value	0	0	0	0	0	0	0	0

Licensee Comments: none

Safety System Unavailability, Emergency AC Power, >2EDG



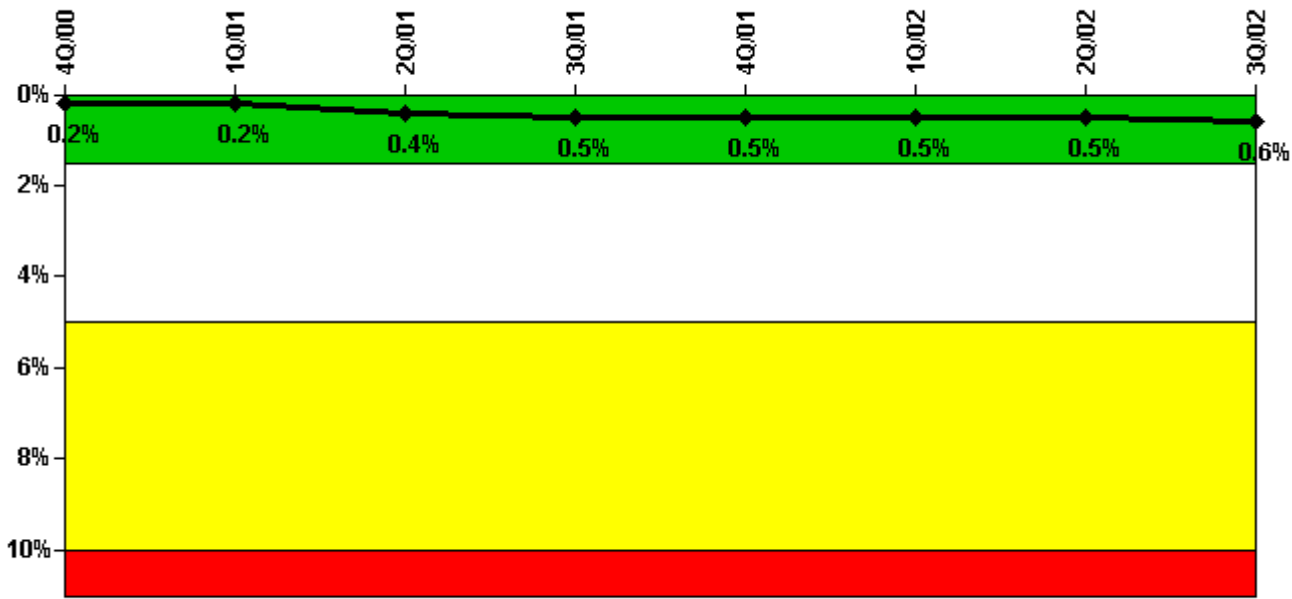
Thresholds: White > 2.5% Yellow > 10.0% Red > 20.0%

Notes

Safety System Unavailability, Emergency AC Power, >2EDG	4Q/00	1Q/01	2Q/01	3Q/01	4Q/01	1Q/02	2Q/02	3Q/02
Train 1								
Planned unavailable hours	192.90	1.40	0	19.60	5.70	0.50	14.50	10.50
Unplanned unavailable hours	0	0.30	0	0	0	0	0	0
Fault exposure hours	0	0	0	0	0	0	0	0
Effective Reset hours	0	1038.40	0	0	0	0	0	0
Required hours	2209.00	2160.00	2183.00	2208.00	2209.00	2160.00	2183.00	2208.00
Train 2								
Planned unavailable hours	19.00	1.10	20.10	0	11.10	1.60	20.60	14.10
Unplanned unavailable hours	0	0	2.70	0	0	0	0	8.00
Fault exposure hours	0	0	44.30	0	0	0	0	0
Effective Reset hours	0	0	0	0	0	0	0	0
Required hours	2209.00	2160.00	2183.00	2208.00	2209.00	2160.00	2183.00	2208.00
Train 3								
Planned unavailable hours	0.70	0.70	0	0.20	0.80	13.70	13.20	7.80
Unplanned unavailable hours	0	0	0	0	0	0	5.10	0
Fault exposure hours	0	0	0	0	0	0	0	0
Effective Reset hours	0	0	0	0	0	0	0	0
Required hours	2209.00	2160.00	2183.00	2208.00	2209.00	2160.00	2183.00	2208.00
Indicator value	3.0%	1.4%	1.5%	1.5%	1.5%	1.5%	1.3%	1.0%

Licensee Comments: none

Safety System Unavailability, High Pressure Injection System (HPSI)



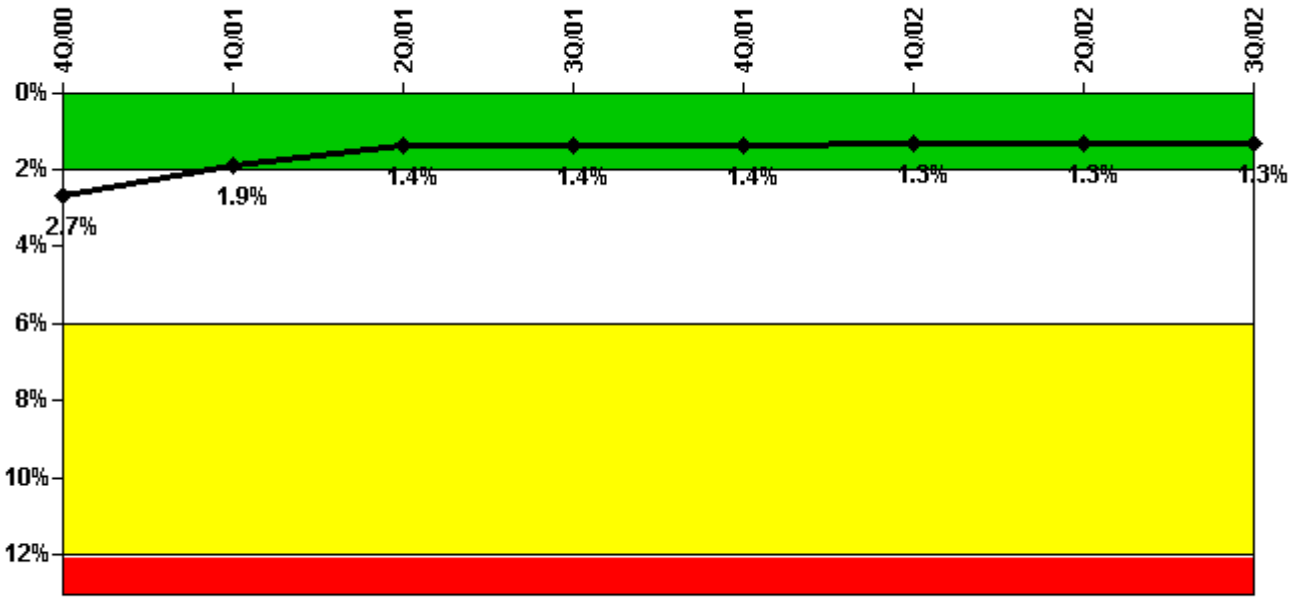
Thresholds: White > 1.5% Yellow > 5.0% Red > 10.0%

Notes

Safety System Unavailability, High Pressure Injection System (HPSI)	4Q/00	1Q/01	2Q/01	3Q/01	4Q/01	1Q/02	2Q/02	3Q/02
Train 1								
Planned unavailable hours	6.00	2.90	12.40	1.10	3.50	4.60	2.40	9.60
Unplanned unavailable hours	0	0	0.50	8.50	13.90	0	5.00	0
Fault exposure hours	0	0	0	14.90	0	0	0	0
Effective Reset hours	0	0	0	0	0	0	0	0
Required hours	2175.67	1296.80	1262.30	2208.00	2209.00	2160.00	2183.00	1801.10
Train 2								
Planned unavailable hours	2.20	3.30	20.80	3.60	4.00	4.60	4.50	2.30
Unplanned unavailable hours	0	0	2.70	0	0	0	0	0
Fault exposure hours	0	0	44.30	0	0	0	0	0
Effective Reset hours	0	0	0	0	0	0	0	0
Required hours	2175.67	1296.80	1262.30	2208.00	2209.00	2160.00	2183.00	1801.10
Indicator value	0.2%	0.2%	0.4%	0.5%	0.5%	0.5%	0.5%	0.6%

Licensee Comments: none

Safety System Unavailability, Heat Removal System (AFW)



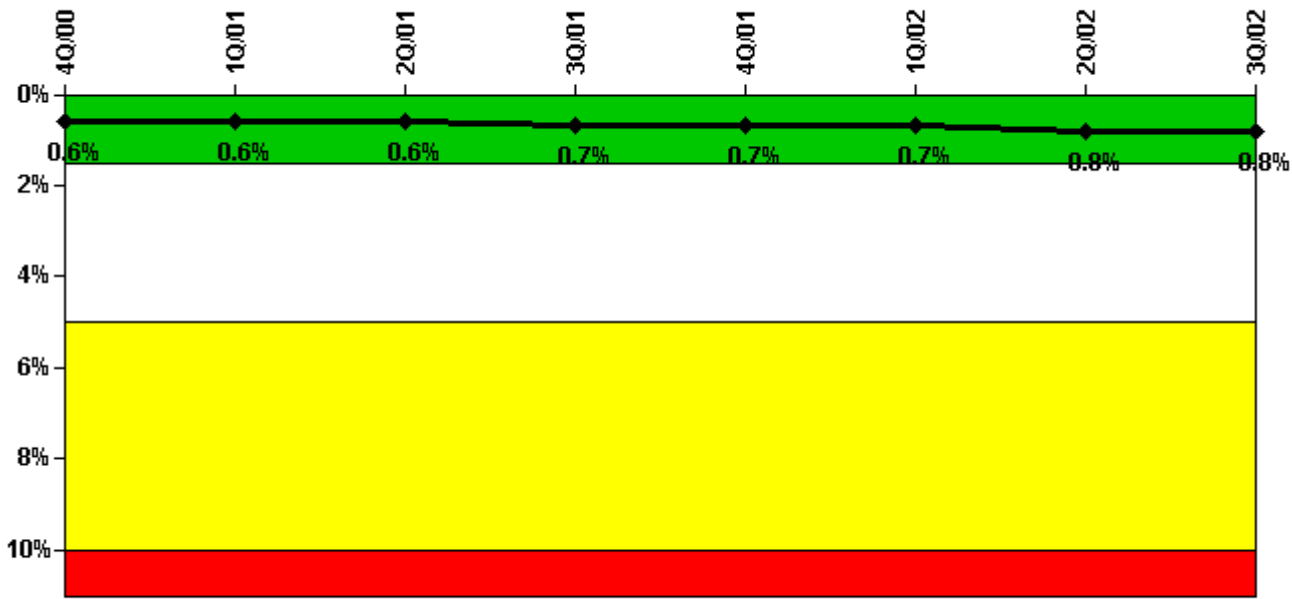
Thresholds: White > 2.0% Yellow > 6.0% Red > 12.0%

Notes

Safety System Unavailability, Heat Removal System (AFW)	4Q/00	1Q/01	2Q/01	3Q/01	4Q/01	1Q/02	2Q/02	3Q/02
Train 1								
Planned unavailable hours	4.30	2.90	12.40	1.10	3.90	5.00	2.40	10.10
Unplanned unavailable hours	0	0	0	8.50	0	0	5.00	0
Fault exposure hours	0	0	0	14.90	0	0	0	0
Effective Reset hours	0	572.70	0	0	0	0	0	0
Required hours	2175.67	1296.80	1262.30	2208.00	2209.00	2160.00	2183.00	1801.10
Train 2								
Planned unavailable hours	21.60	3.60	20.80	3.50	4.70	4.90	5.10	2.80
Unplanned unavailable hours	0	0	2.70	0	0	0	0	0
Fault exposure hours	0	0	44.30	0	0	0	0	0
Effective Reset hours	0	0	0	0	0	0	0	0
Required hours	2175.67	1296.80	1262.30	2208.00	2209.00	2160.00	2183.00	1801.10
Train 3								
Planned unavailable hours	0.20	0.80	0.50	0.50	0.60	0.50	5.40	3.20
Unplanned unavailable hours	0	0	0	0	0	0	0	0
Fault exposure hours	0	0	0	0	0	0	0	0
Effective Reset hours	0	0	360.60	0	0	0	0	0
Required hours	2175.67	1296.80	1262.30	2208.00	2209.00	2160.00	2183.00	1801.10
Indicator value	2.7%	1.9%	1.4%	1.4%	1.4%	1.3%	1.3%	1.3%

Licensee Comments: none

Safety System Unavailability, Residual Heat Removal System



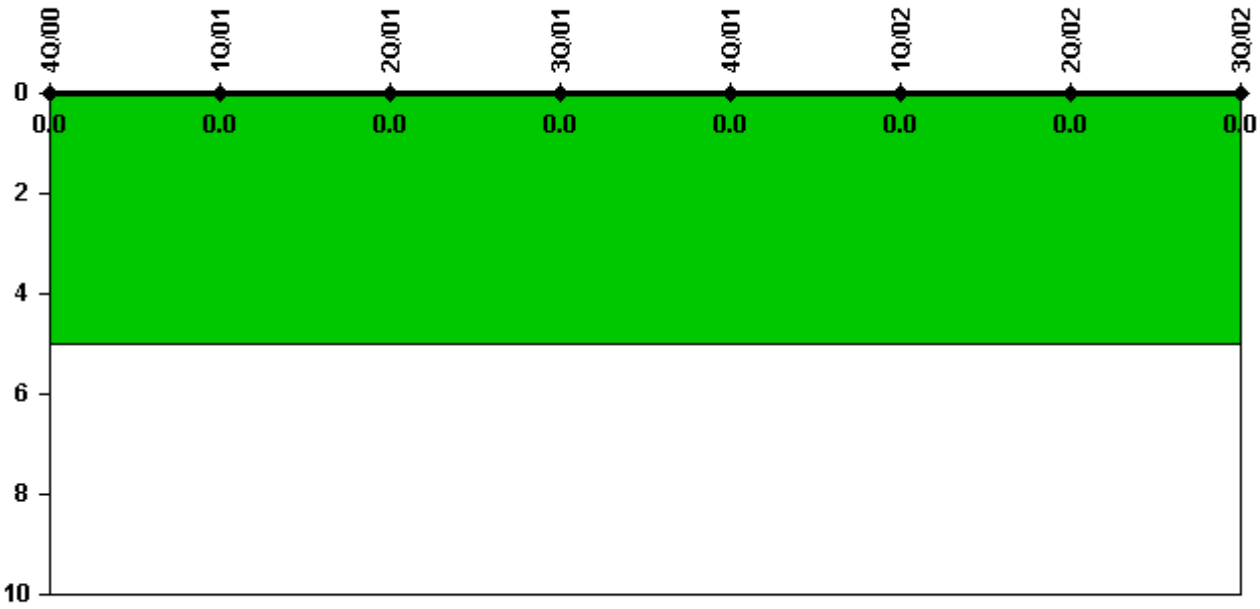
Thresholds: White > 1.5% Yellow > 5.0% Red > 10.0%

Notes

Safety System Unavailability, Residual Heat Removal System	4Q/00	1Q/01	2Q/01	3Q/01	4Q/01	1Q/02	2Q/02	3Q/02
Train 1								
Planned unavailable hours	5.80	21.70	17.60	8.10	16.70	5.30	28.30	10.50
Unplanned unavailable hours	0	0	0.60	8.50	13.90	0	5.00	0
Fault exposure hours	0	0	0	14.90	0	0	0	0
Effective Reset hours	0	0	0	0	0	0	0	0
Required hours	2209.00	2160.00	2183.00	2208.00	2209.00	2160.00	2183.00	2208.00
Train 2								
Planned unavailable hours	11.40	3.30	25.60	4.10	6.80	5.40	17.30	6.60
Unplanned unavailable hours	0	0	2.70	0	0	0	0	0
Fault exposure hours	0	0	44.30	0	0	0	0	0
Effective Reset hours	0	0	0	0	0	0	0	0
Required hours	2209.00	2160.00	2183.00	2208.00	2209.00	2160.00	2183.00	2208.00
Indicator value	0.6%	0.6%	0.6%	0.7%	0.7%	0.7%	0.8%	0.8%

Licensee Comments: none

Safety System Functional Failures (PWR)



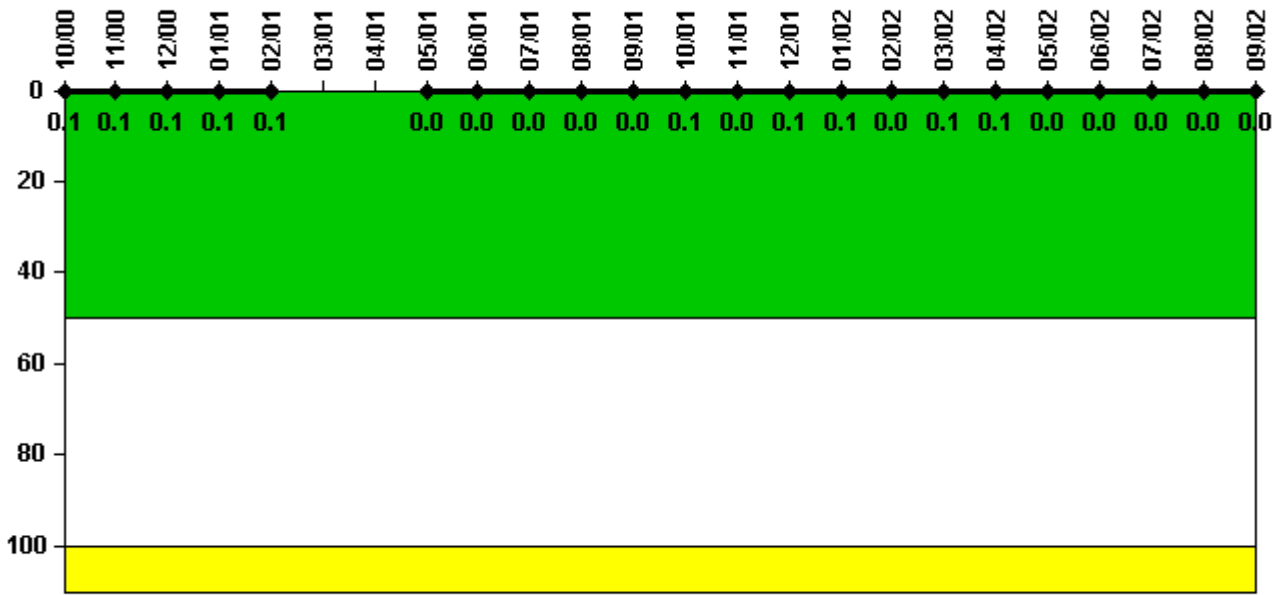
Thresholds: White > 5.0

Notes

Safety System Functional Failures (PWR)	4Q/00	1Q/01	2Q/01	3Q/01	4Q/01	1Q/02	2Q/02	3Q/02
Safety System Functional Failures	0	0	0	0	0	0	0	0
Indicator value	0	0	0	0	0	0	0	0

Licensee Comments: none

Reactor Coolant System Activity



Thresholds: White > 50.0 Yellow > 100.0

Notes

Reactor Coolant System Activity	10/00	11/00	12/00	1/01	2/01	3/01	4/01	5/01	6/01	7/01	8/01	9/01
Maximum activity	0.000228	0.000241	0.000260	0.000241	0.000240	N/A	N/A	0.000132	0.000164	0.000181	0.000207	0.000200
Technical specification limit	0.3	0.3	0.3	0.3	0.3	N/A	N/A	0.5	0.5	0.5	0.5	0.5
Indicator value	0.1	0.1	0.1	0.1	0.1	N/A	N/A	0	0	0	0	0

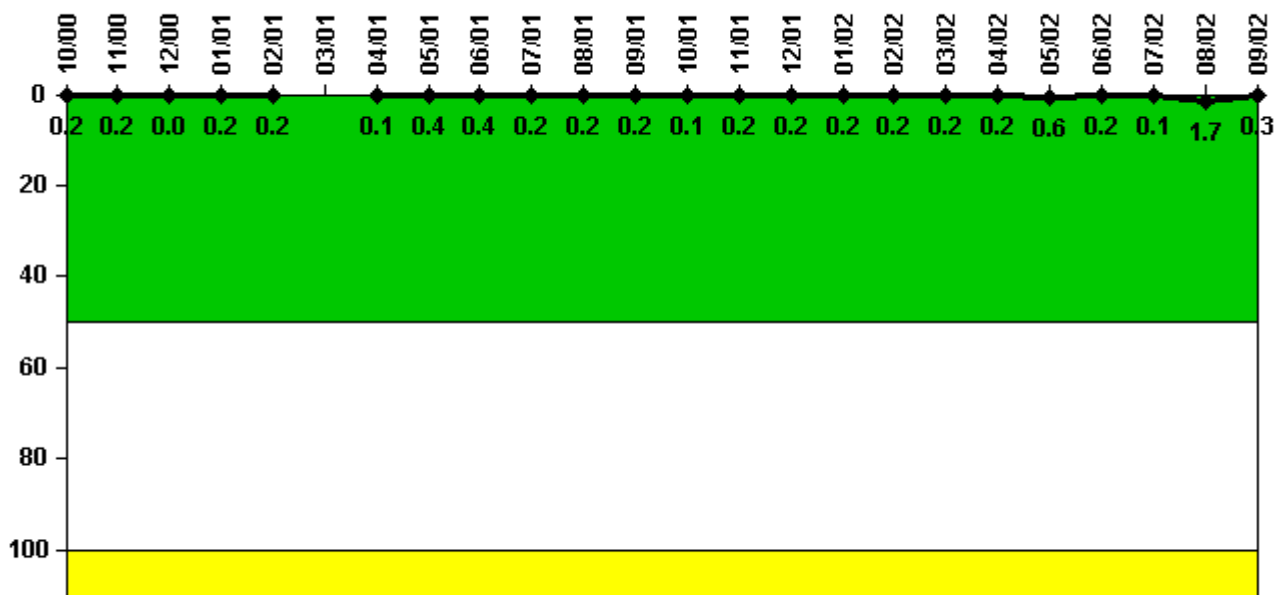
Reactor Coolant System Activity	10/01	11/01	12/01	1/02	2/02	3/02	4/02	5/02	6/02	7/02	8/02	9/02
Maximum activity	0.000439	0.000222	0.000251	0.000251	0.000245	0.000260	0.000262	0.000124	0.000124	0.000127	0.000168	0.000172
Technical specification limit	0.5	0.5	0.5	0.5	0.5	0.5	0.5	0.5	0.5	0.5	0.5	0.5
Indicator value	0.1	0	0.1	0.1	0	0.1	0.1	0	0	0	0	0

Licensee Comments:

9/02: Calculation error in July2001 data found and corrected. Color unaffected.

9/01: Calculation error in July 2001 data found and corrected with Q3 2002 submittal. Color unaffected.

Reactor Coolant System Leakage



Thresholds: White > 50.0 Yellow > 100.0

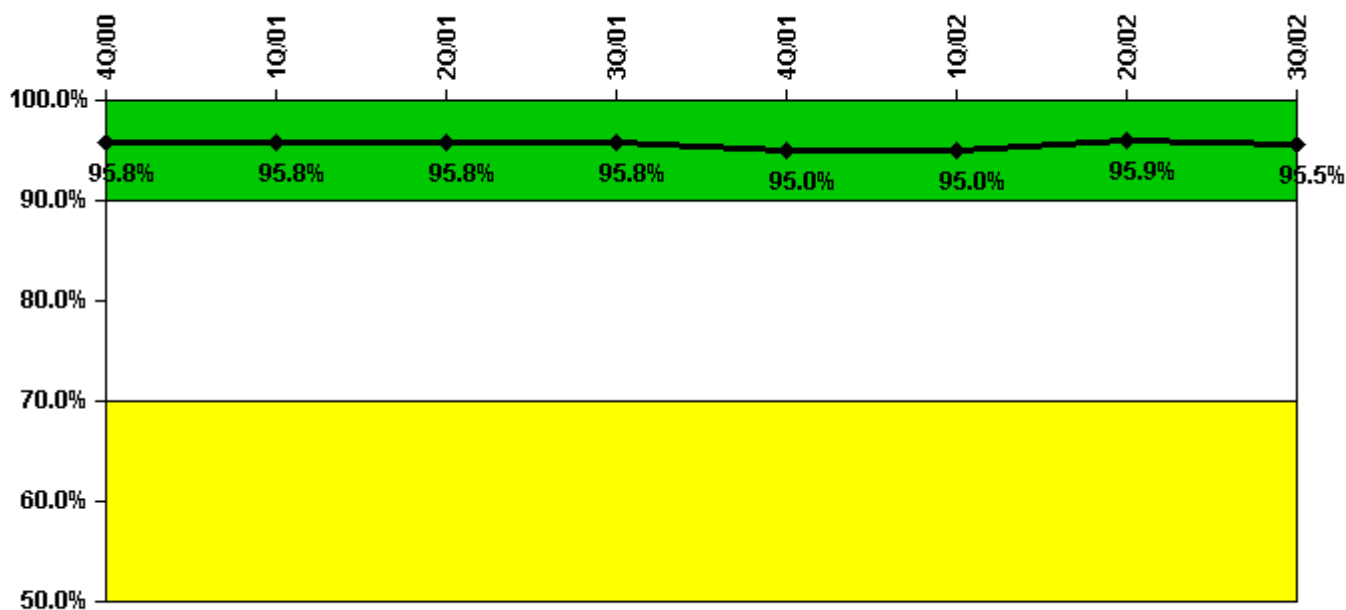
Notes

Reactor Coolant System Leakage	10/00	11/00	12/00	1/01	2/01	3/01	4/01	5/01	6/01	7/01	8/01	9/01
Maximum leakage	0.020	0.018	0	0.018	0.023	N/A	0.006	0.036	0.037	0.023	0.018	0.024
Technical specification limit	10.0	10.0	10.0	10.0	10.0	10.0	10.0	10.0	10.0	10.0	10.0	10.0
Indicator value	0.2	0.2	0	0.2	0.2	N/A	0.1	0.4	0.4	0.2	0.2	0.2

Reactor Coolant System Leakage	10/01	11/01	12/01	1/02	2/02	3/02	4/02	5/02	6/02	7/02	8/02	9/02
Maximum leakage	0.013	0.017	0.024	0.024	0.020	0.015	0.018	0.058	0.024	0.012	0.170	0.033
Technical specification limit	10.0	10.0	10.0	10.0	10.0	10.0	10.0	10.0	10.0	10.0	10.0	10.0
Indicator value	0.1	0.2	0.2	0.2	0.2	0.2	0.2	0.6	0.2	0.1	1.7	0.3

Licensee Comments: none

Drill/Exercise Performance



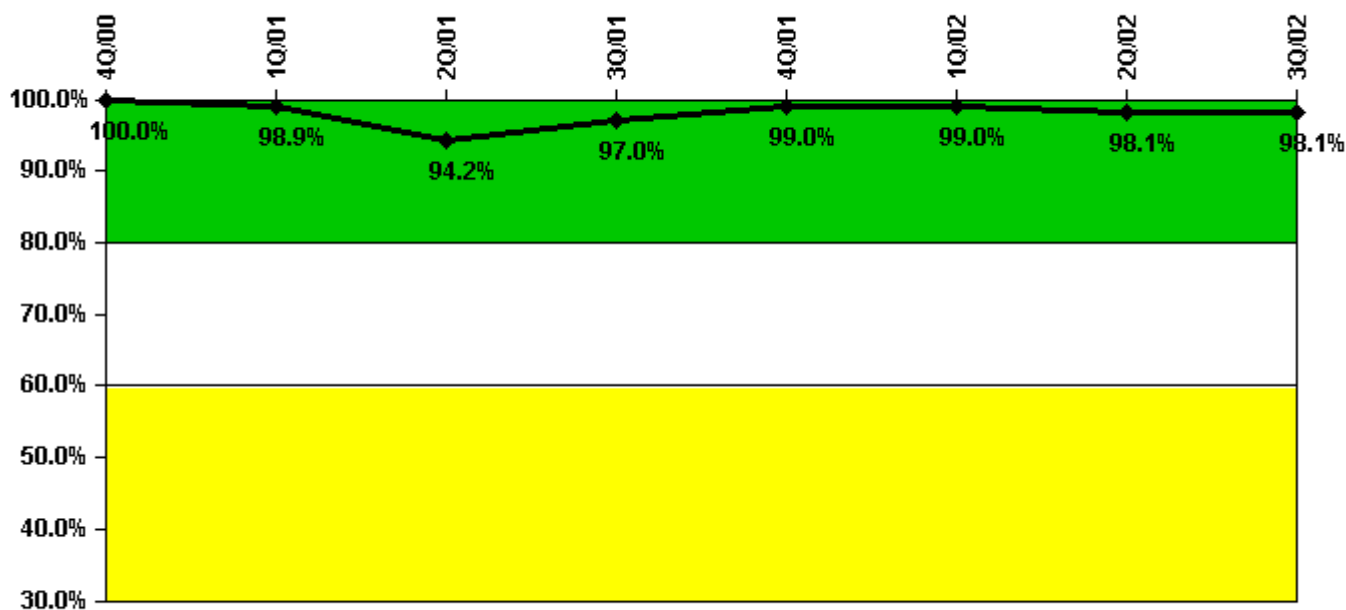
Thresholds: White < 90.0% Yellow < 70.0%

Notes

Drill/Exercise Performance	4Q/00	1Q/01	2Q/01	3Q/01	4Q/01	1Q/02	2Q/02	3Q/02
Successful opportunities	56.0	9.0	37.0	61.0	38.0	6.0	79.0	56.0
Total opportunities	58.0	10.0	38.0	64.0	42.0	6.0	82.0	58.0
Indicator value	95.8%	95.8%	95.8%	95.8%	95.0%	95.0%	95.9%	95.5%

Licensee Comments: none

ERO Drill Participation



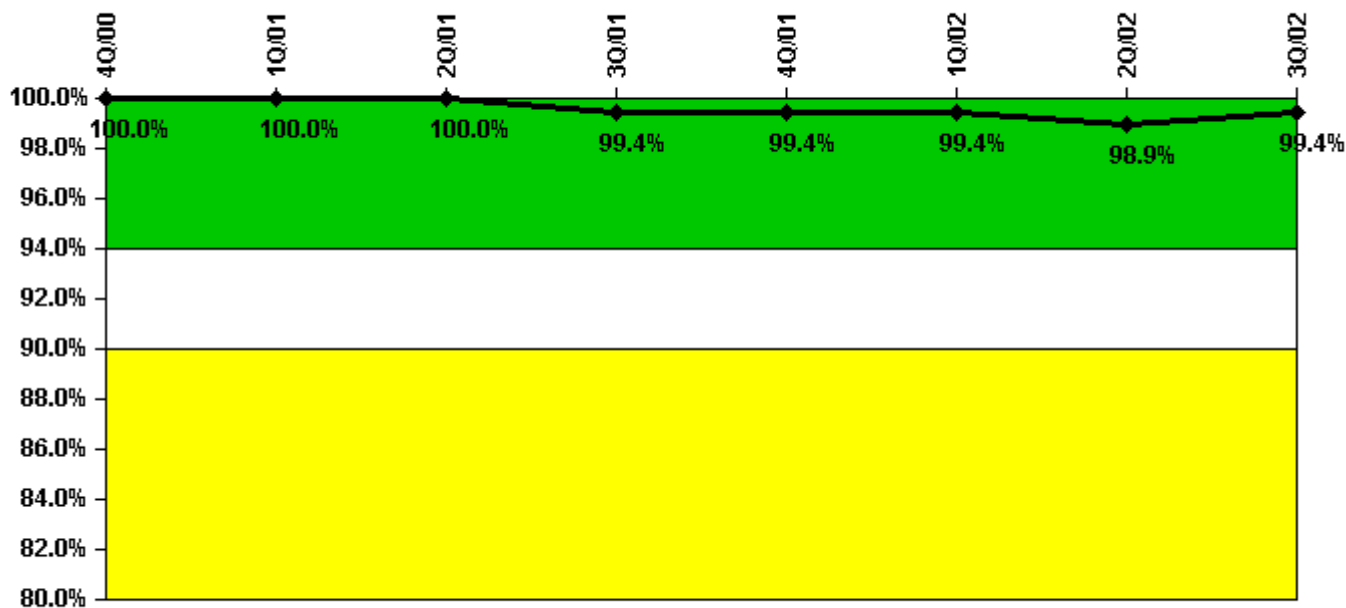
Thresholds: White < 80.0% Yellow < 60.0%

Notes

ERO Drill Participation	4Q/00	1Q/01	2Q/01	3Q/01	4Q/01	1Q/02	2Q/02	3Q/02
Participating Key personnel	103.0	94.0	97.0	97.0	99.0	102.0	106.0	101.0
Total Key personnel	103.0	95.0	103.0	100.0	100.0	103.0	108.0	103.0
Indicator value	100.0%	98.9%	94.2%	97.0%	99.0%	99.0%	98.1%	98.1%

Licensee Comments: none

Alert & Notification System



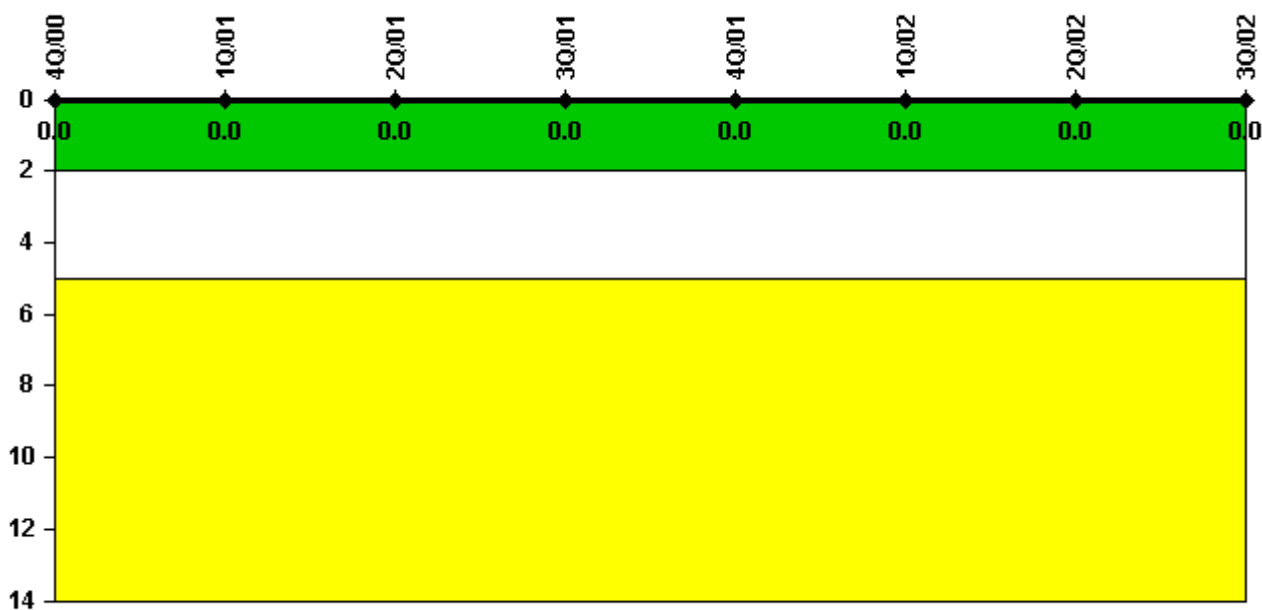
Thresholds: White < 94.0% Yellow < 90.0%

Notes

Alert & Notification System	4Q/00	1Q/01	2Q/01	3Q/01	4Q/01	1Q/02	2Q/02	3Q/02
Successful siren-tests	45	42	45	41	45	42	44	45
Total sirens-tests	45	42	45	42	45	42	45	45
Indicator value	100.0%	100.0%	100.0%	99.4%	99.4%	99.4%	98.9%	99.4%

Licensee Comments: none

Occupational Exposure Control Effectiveness



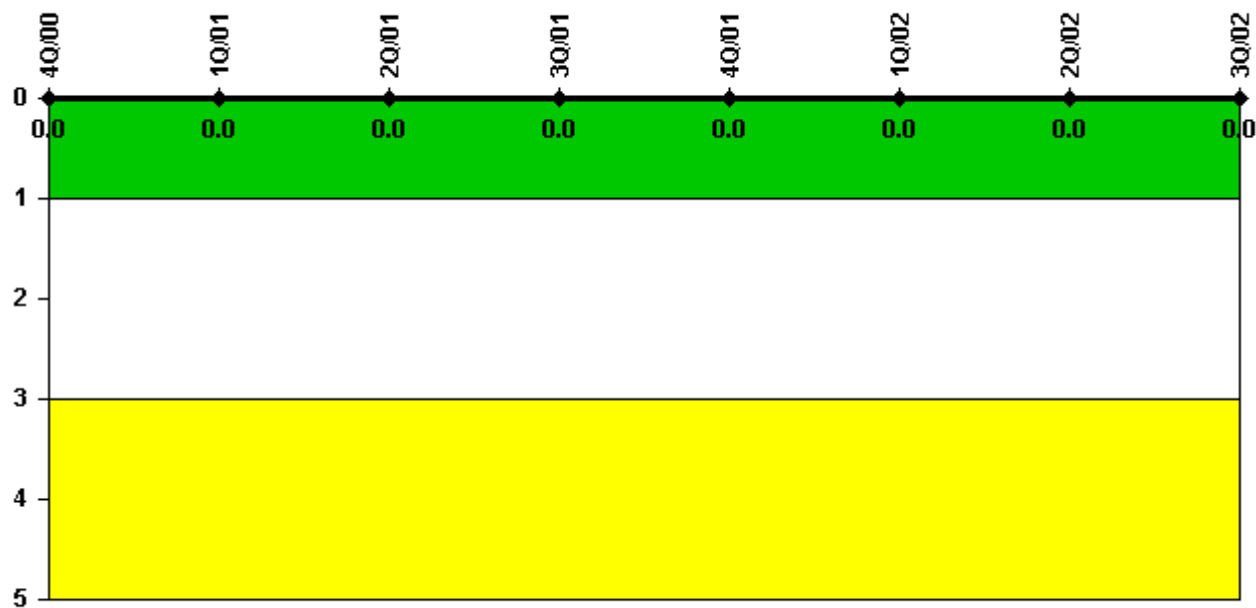
Thresholds: White > 2.0 Yellow > 5.0

Notes

Occupational Exposure Control Effectiveness	4Q/00	1Q/01	2Q/01	3Q/01	4Q/01	1Q/02	2Q/02	3Q/02
High radiation area occurrences	0	0	0	0	0	0	0	0
Very high radiation area occurrences	0	0	0	0	0	0	0	0
Unintended exposure occurrences	0	0	0	0	0	0	0	0
Indicator value	0	0	0	0	0	0	0	0

Licensee Comments: none

RETS/ODCM Radiological Effluent



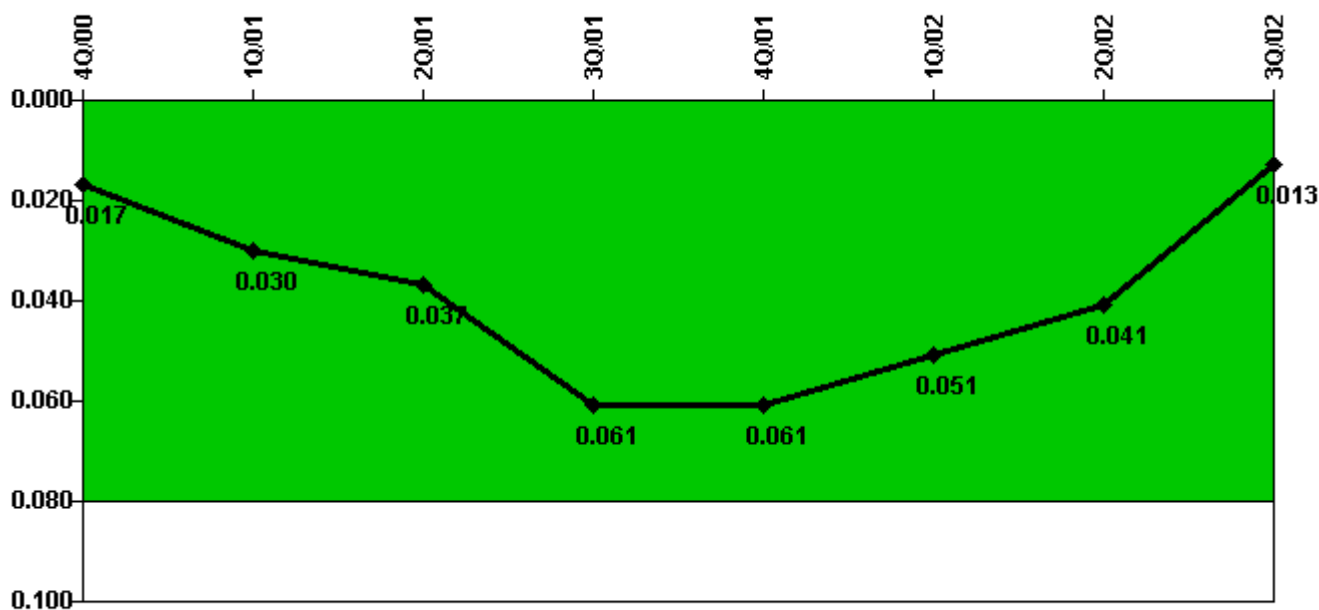
Thresholds: White > 1.0 Yellow > 3.0

Notes

RETS/ODCM Radiological Effluent	4Q/00	1Q/01	2Q/01	3Q/01	4Q/01	1Q/02	2Q/02	3Q/02
RETS/ODCM occurrences	0	0	0	0	0	0	0	0
Indicator value	0	0	0	0	0	0	0	0

Licensee Comments: none

Protected Area Security Performance Index



Thresholds: White > 0.080

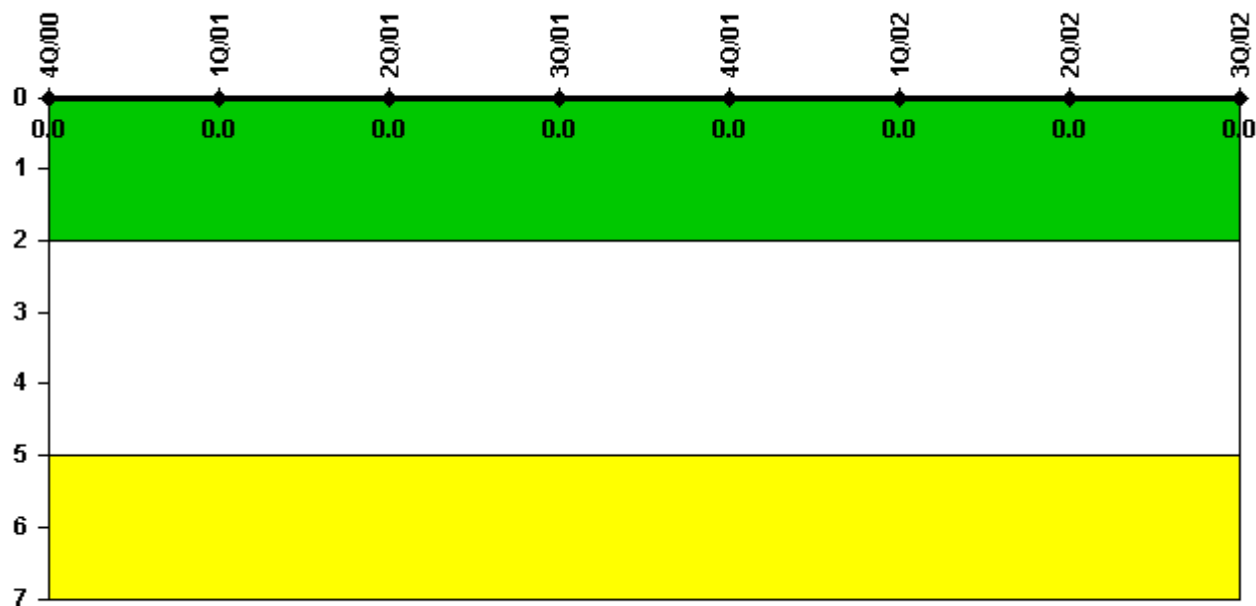
Notes

Protected Area Security Performance Index	4Q/00	1Q/01	2Q/01	3Q/01	4Q/01	1Q/02	2Q/02	3Q/02
IDS compensatory hours	88.37	172.90	70.80	71.96	44.90	82.60	104.00	27.90
CCTV compensatory hours	9.3	136.8	216.4	475.5	20.5	18.9	29.8	12.0
IDS normalization factor	1.70	1.70	1.70	1.70	1.70	1.70	1.70	1.70
CCTV normalization factor	1.2	1.0	1.0	1.0	1.0	1.0	1.0	1.0
Index Value	0.017	0.030	0.037	0.061	0.061	0.051	0.041	0.013

Licensee Comments:

3Q/02: January through August 2002 compensatory hours for planned modification to upgrade the security computer and video multiplexers are excluded per NEI 99-02 guidance. NRC resident inspector informed of modifications and compensatory measures.

Personnel Screening Program



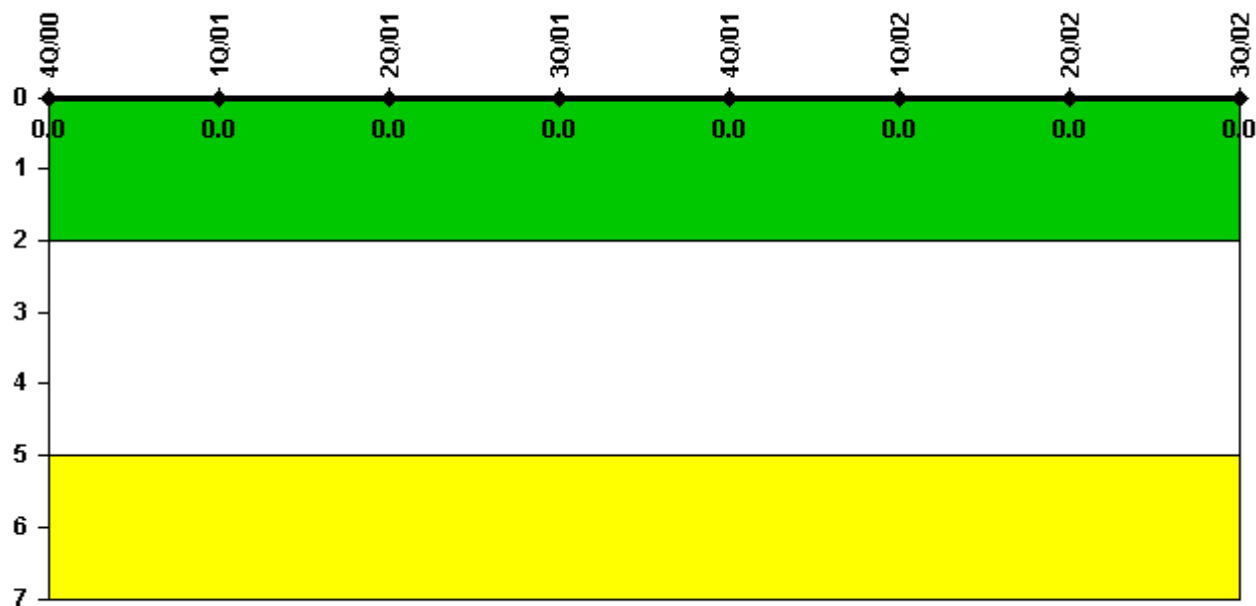
Thresholds: White > 2.0 Yellow > 5.0

Notes

Personnel Screening Program	4Q/00	1Q/01	2Q/01	3Q/01	4Q/01	1Q/02	2Q/02	3Q/02
Program failures	0	0	0	0	0	0	0	0
Indicator value	0	0	0	0	0	0	0	0

Licensee Comments: none

FFD/Personnel Reliability



Thresholds: White > 2.0 Yellow > 5.0

Notes

FFD/Personnel Reliability	4Q/00	1Q/01	2Q/01	3Q/01	4Q/01	1Q/02	2Q/02	3Q/02
Program Failures	0	0	0	0	0	0	0	0
Indicator value	0	0	0	0	0	0	0	0

Licensee Comments: none

▲ [PI Summary](#) | [Inspection Findings Summary](#) | [Reactor Oversight Process](#)

Last Modified: October 22, 2002