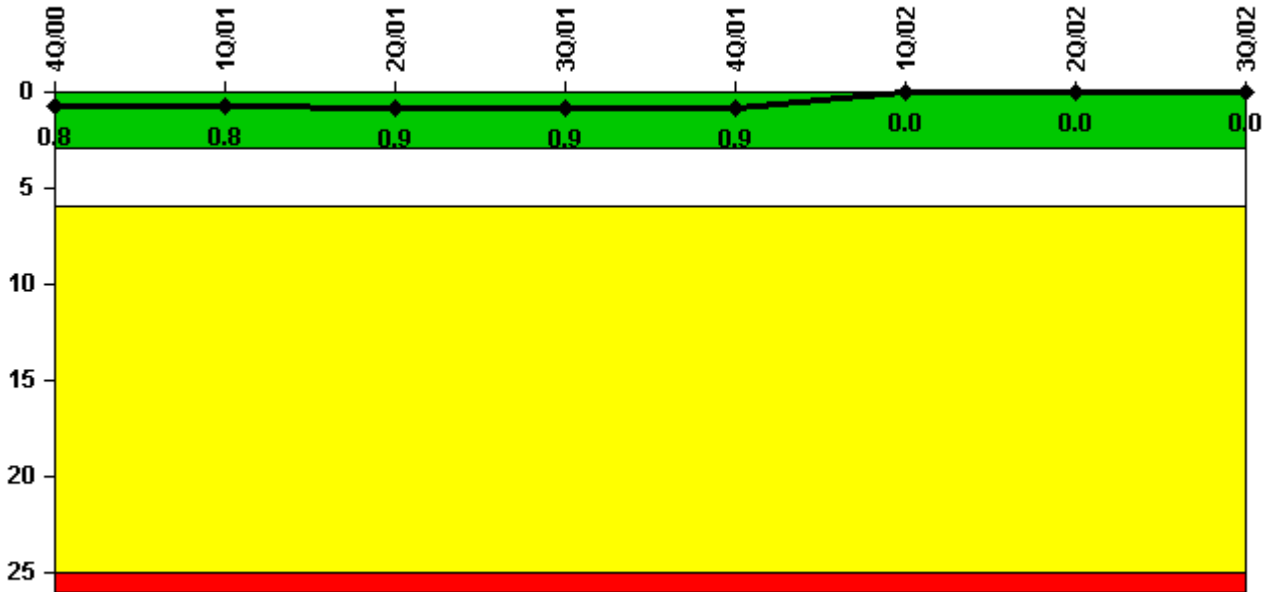


# Callaway

## 3Q/2002 Performance Indicators

Licensee's General Comments: none

### Unplanned Scrams per 7000 Critical Hrs



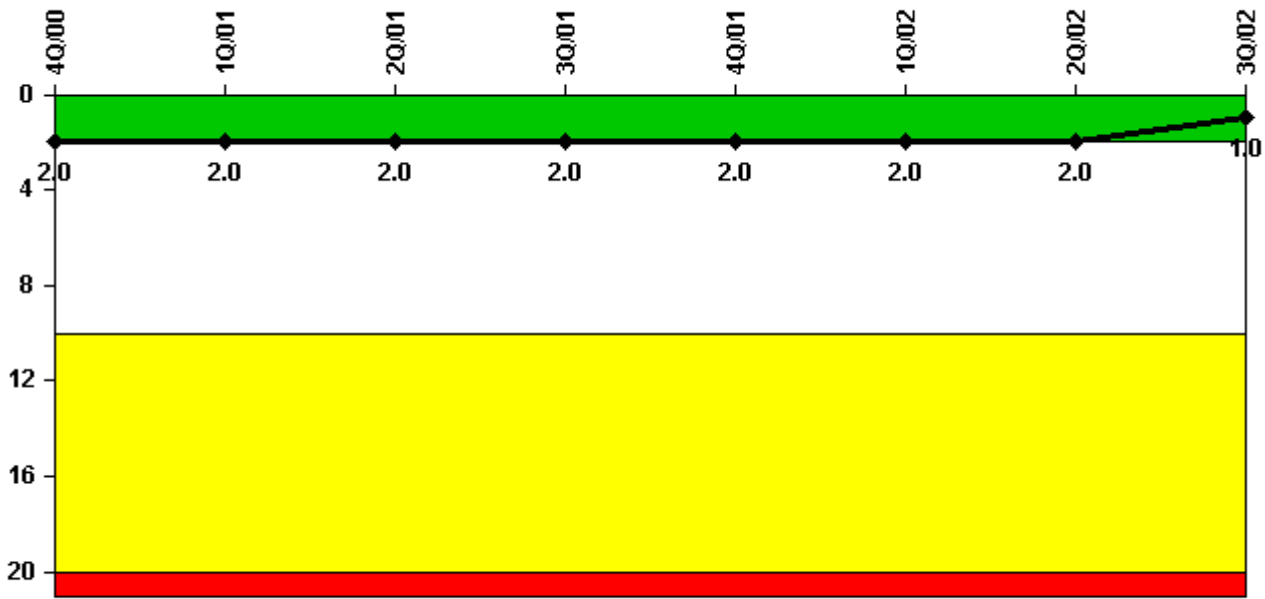
Thresholds: White > 3.0 Yellow > 6.0 Red > 25.0

### Notes

| Unplanned Scrams per 7000 Critical Hrs | 4Q/00  | 1Q/01  | 2Q/01  | 3Q/01  | 4Q/01  | 1Q/02  | 2Q/02  | 3Q/02  |
|--|--------|--------|--------|--------|--------|--------|--------|--------|
| Unplanned scrams                       | 0      | 1.0    | 0      | 0      | 0      | 0      | 0      | 0      |
| Critical hours                         | 2209.0 | 2113.0 | 1139.0 | 2208.0 | 2132.0 | 1840.0 | 2183.0 | 2208.0 |
| Indicator value                        | 0.8    | 0.8    | 0.9    | 0.9    | 0.9    | 0      | 0      | 0      |

Licensee Comments: none

### Scrams with Loss of Normal Heat Removal



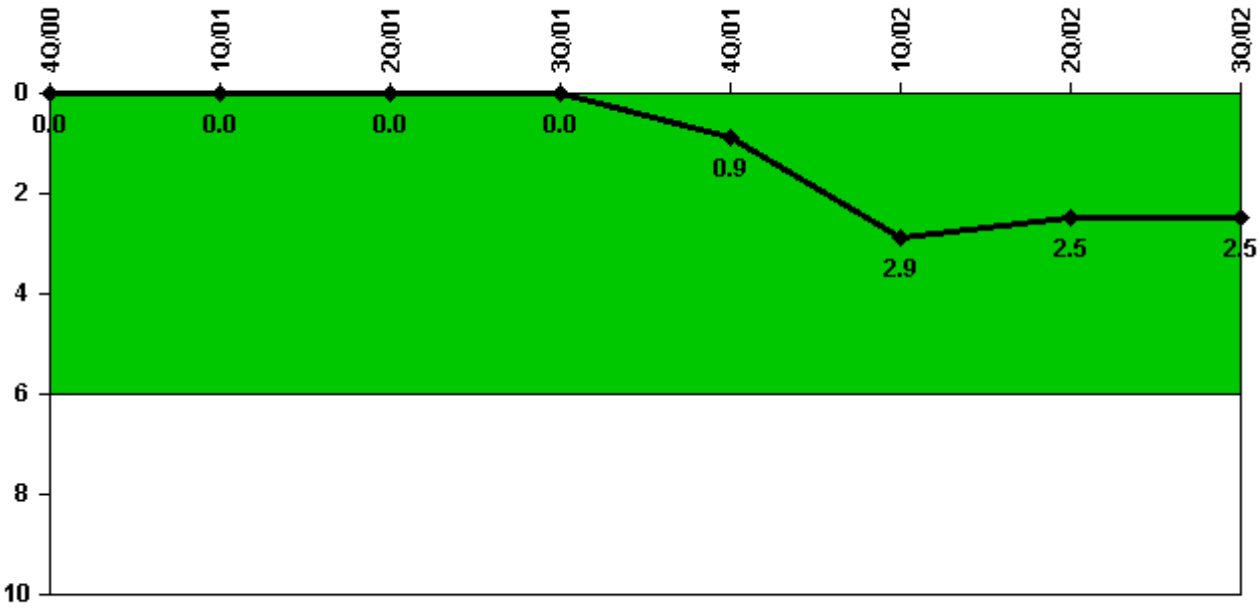
Thresholds: White > 2.0 Yellow > 10.0 Red > 20.0

#### Notes

| Scrams with Loss of Normal Heat Removal | 4Q/00 | 1Q/01 | 2Q/01 | 3Q/01 | 4Q/01 | 1Q/02 | 2Q/02 | 3Q/02 |
|---|-------|-------|-------|-------|-------|-------|-------|-------|
| Scrams                                  | 0     | 0     | 0     | 0     | 0     | 0     | 0     | 0     |
|   |       |       |       |       |       |       |       |       |
| Indicator value                         | 2.0   | 2.0   | 2.0   | 2.0   | 2.0   | 2.0   | 2.0   | 1.0   |

Licensee Comments: none

### Unplanned Power Changes per 7000 Critical Hrs



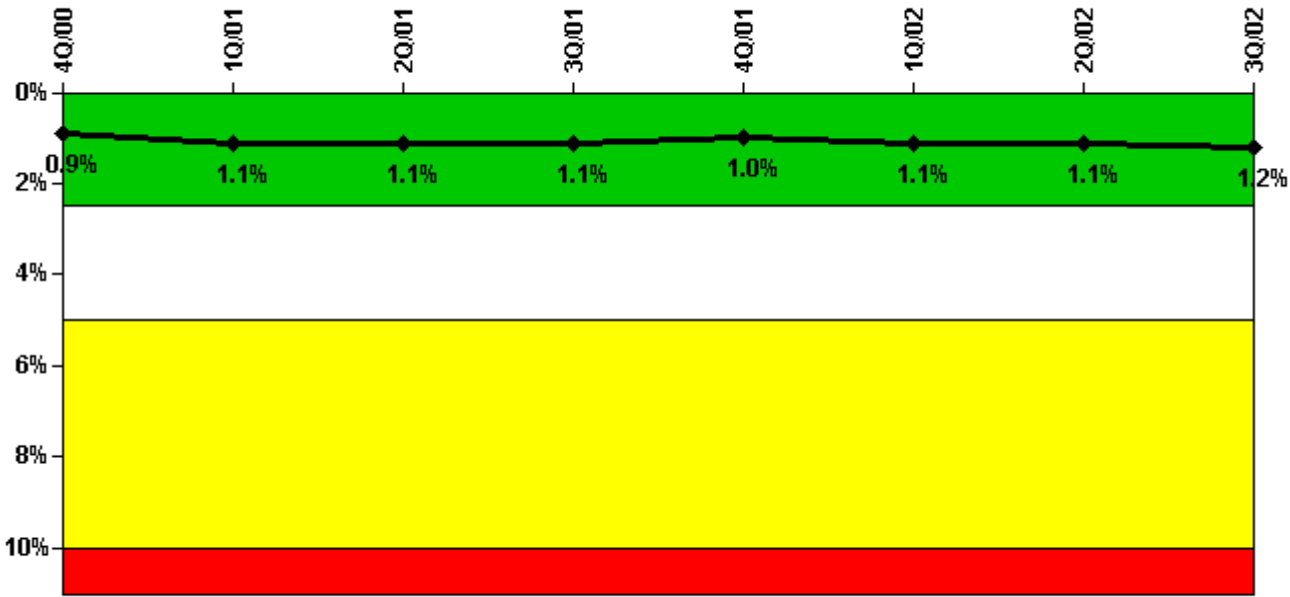
Thresholds: White > 6.0

#### Notes

| Unplanned Power Changes per 7000 Critical Hrs | 4Q/00  | 1Q/01  | 2Q/01  | 3Q/01  | 4Q/01  | 1Q/02  | 2Q/02  | 3Q/02  |
|---|--------|--------|--------|--------|--------|--------|--------|--------|
| Unplanned power changes                       | 0      | 0      | 0      | 0      | 1.0    | 2.0    | 0      | 0      |
| Critical hours                                | 2209.0 | 2113.0 | 1139.0 | 2208.0 | 2132.0 | 1840.0 | 2183.0 | 2208.0 |
| Indicator value                               | 0      | 0      | 0      | 0      | 0.9    | 2.9    | 2.5    | 2.5    |

Licensee Comments: none

### Safety System Unavailability, Emergency AC Power



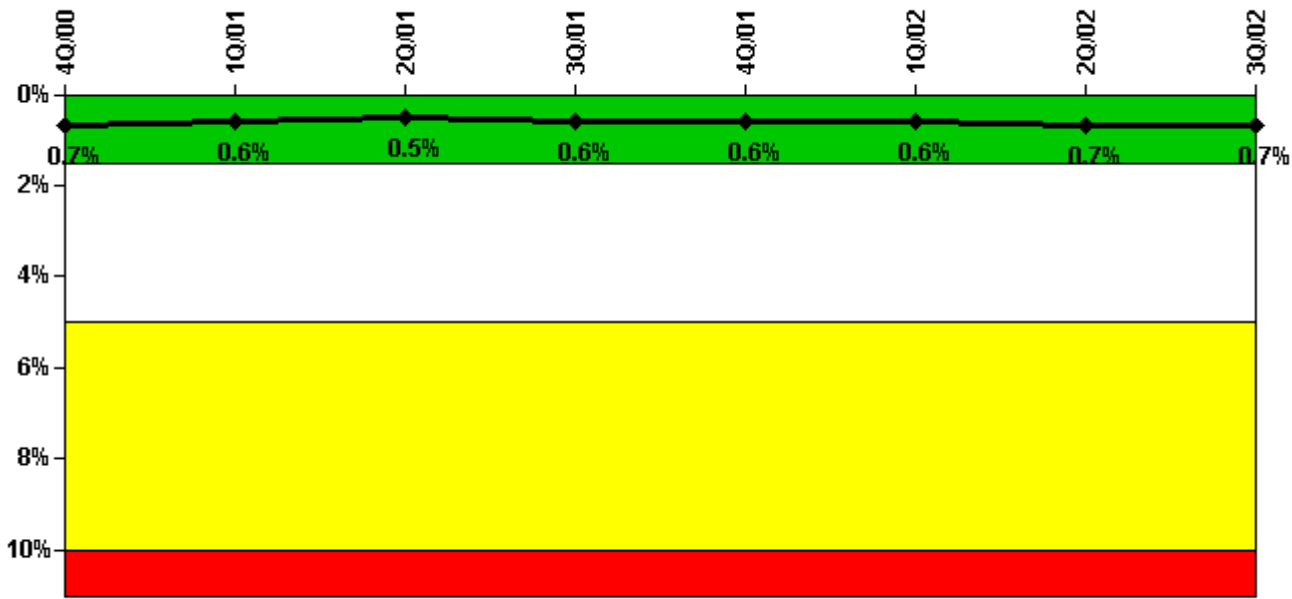
Thresholds: White > 2.5% Yellow > 5.0% Red > 10.0%

#### Notes

| Safety System Unavailability, Emergency AC Power | 4Q/00       | 1Q/01       | 2Q/01       | 3Q/01       | 4Q/01       | 1Q/02       | 2Q/02       | 3Q/02       |
|--|-------------|-------------|-------------|-------------|-------------|-------------|-------------|-------------|
| <b>Train 1</b>                                   |             |             |             |             |             |             |             |             |
| Planned unavailable hours                        | 7.00        | 14.30       | 3.30        | 24.30       | 1.50        | 18.70       | 3.00        | 42.20       |
| Unplanned unavailable hours                      | 11.30       | 0           | 0           | 0           | 2.40        | 0           | 0           | 8.20        |
| Fault exposure hours                             | 0           | 0           | 0           | 0           | 0           | 0           | 0           | 0           |
| Effective Reset hours                            | 0           | 0           | 0           | 0           | 0           | 0           | 0           | 0           |
| Required hours                                   | 2208.00     | 2160.00     | 1757.60     | 2208.00     | 2208.00     | 1849.40     | 2184.00     | 2208.00     |
| <b>Train 2</b>                                   |             |             |             |             |             |             |             |             |
| Planned unavailable hours                        | 28.70       | 1.50        | 0.60        | 32.90       | 2.30        | 34.00       | 10.10       | 31.50       |
| Unplanned unavailable hours                      | 21.20       | 0           | 0           | 0           | 0           | 0           | 0.10        | 0           |
| Fault exposure hours                             | 0           | 132.30      | 0           | 0           | 0           | 0           | 0           | 0           |
| Effective Reset hours                            | 0           | 0           | 0           | 0           | 0           | 0           | 0           | 0           |
| Required hours                                   | 2208.00     | 2160.00     | 1757.60     | 2208.00     | 2208.00     | 1849.40     | 2184.00     | 2208.00     |
|  |             |             |             |             |             |             |             |             |
| <b>Indicator value</b>                           | <b>0.9%</b> | <b>1.1%</b> | <b>1.1%</b> | <b>1.1%</b> | <b>1.0%</b> | <b>1.1%</b> | <b>1.1%</b> | <b>1.2%</b> |

Licensee Comments: none

### Safety System Unavailability, High Pressure Injection System (HPSI)



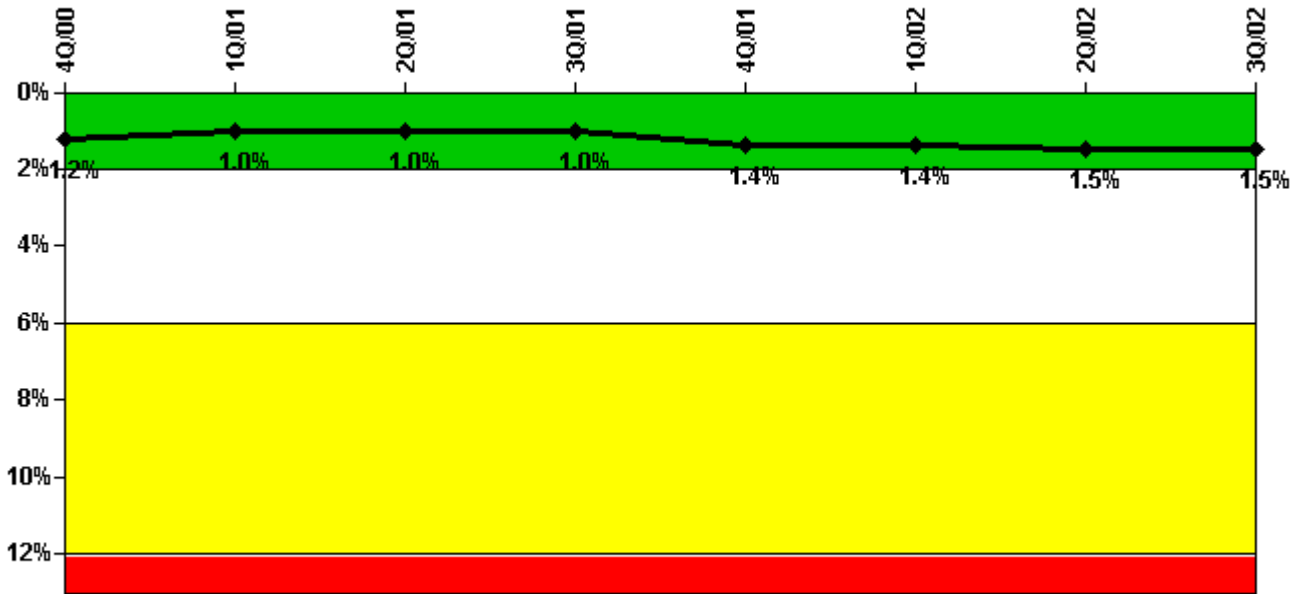
Thresholds: White > 1.5% Yellow > 5.0% Red > 10.0%

**Notes**

| Safety System Unavailability, High Pressure Injection System (HPSI) | 4Q/00       | 1Q/01       | 2Q/01       | 3Q/01       | 4Q/01       | 1Q/02       | 2Q/02       | 3Q/02       |
|---|-------------|-------------|-------------|-------------|-------------|-------------|-------------|-------------|
| <b>Train 1</b>  |             |             |             |             |             |             |             |             |
| Planned unavailable hours   | 7.30        | 2.70        | 3.30        | 23.30       | 6.70        | 4.00        | 19.90       | 0.60        |
| Unplanned unavailable hours   | 9.70        | 0           | 0           | 0           | 0           | 0           | 0           | 0.60        |
| Fault exposure hours  | 0           | 0           | 0           | 0           | 0           | 0           | 0           | 0           |
| Effective Reset hours   | 0           | 0           | 0           | 0           | 0           | 0           | 0           | 0           |
| Required hours  | 2208.00     | 2160.00     | 1672.30     | 2208.00     | 2208.00     | 1849.40     | 2184.00     | 2208.00     |
| <b>Train 2</b>  |             |             |             |             |             |             |             |             |
| Planned unavailable hours   | 7.90        | 19.10       | 3.60        | 4.90        | 1.60        | 32.50       | 2.30        | 1.20        |
| Unplanned unavailable hours   | 0           | 0           | 0           | 0           | 4.30        | 0           | 0           | 9.60        |
| Fault exposure hours  | 0           | 0           | 0           | 0           | 0           | 0           | 0           | 0           |
| Effective Reset hours   | 0           | 0           | 0           | 0           | 0           | 0           | 0           | 0           |
| Required hours  | 2208.00     | 2160.00     | 1672.30     | 2208.00     | 2208.00     | 1849.40     | 2184.00     | 2208.00     |
| <b>Train 3</b>  |             |             |             |             |             |             |             |             |
| Planned unavailable hours   | 26.40       | 3.60        | 2.20        | 8.20        | 19.60       | 2.00        | 17.60       | 22.50       |
| Unplanned unavailable hours   | 9.70        | 0.60        | 0           | 0           | 0           | 0           | 0           | 0.60        |
| Fault exposure hours  | 0           | 0           | 0           | 0           | 0           | 0           | 0           | 0           |
| Effective Reset hours   | 0           | 0           | 0           | 0           | 0           | 0           | 0           | 0           |
| Required hours  | 2208.00     | 2160.00     | 1280.00     | 2208.00     | 2208.00     | 1849.40     | 2184.00     | 2208.00     |
| <b>Train 4</b>  |             |             |             |             |             |             |             |             |
| Planned unavailable hours   | 15.80       | 3.50        | 3.20        | 6.70        | 19.70       | 18.50       | 2.00        | 1.30        |
| Unplanned unavailable hours   | 0           | 0           | 0           | 0           | 4.30        | 0           | 0           | 9.60        |
| Fault exposure hours  | 0           | 0           | 0           | 0           | 0           | 0           | 0           | 0           |
| Effective Reset hours   | 0           | 0           | 0           | 0           | 0           | 0           | 0           | 0           |
| Required hours  | 2208.00     | 2160.00     | 1280.00     | 2208.00     | 2208.00     | 1849.40     | 2184.00     | 2208.00     |
|   |             |             |             |             |             |             |             |             |
| <b>Indicator value</b>  | <b>0.7%</b> | <b>0.6%</b> | <b>0.5%</b> | <b>0.6%</b> | <b>0.6%</b> | <b>0.6%</b> | <b>0.7%</b> | <b>0.7%</b> |

Licensee Comments: none

### Safety System Unavailability, Heat Removal System (AFW)



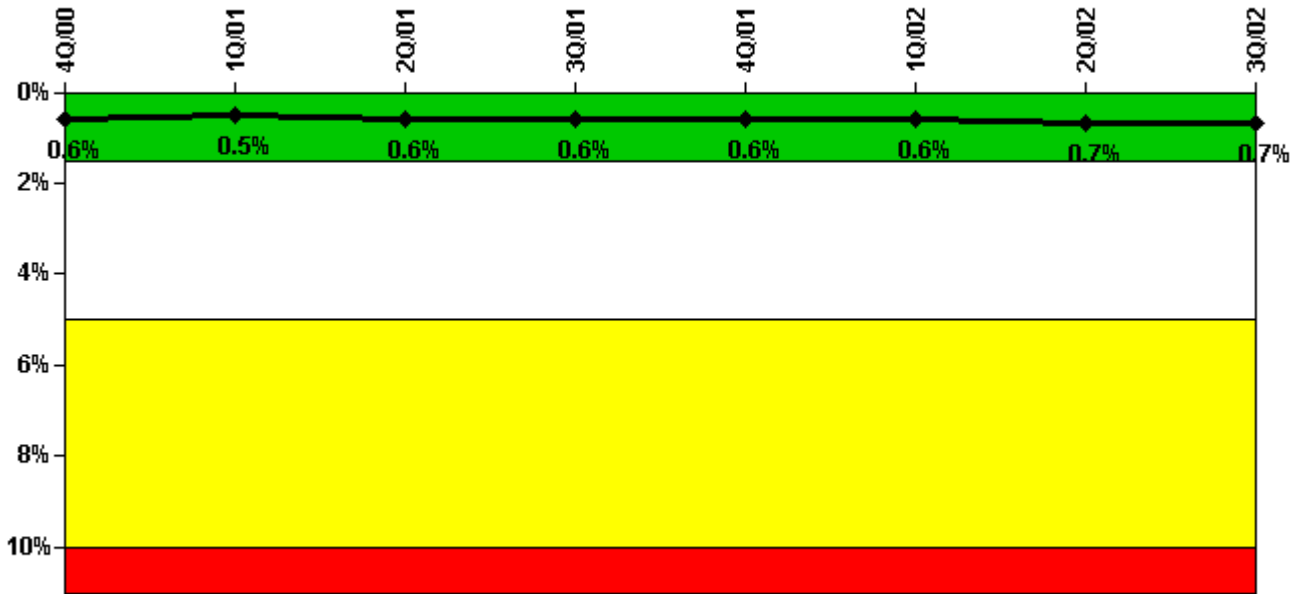
Thresholds: White > 2.0% Yellow > 6.0% Red > 12.0%

#### Notes

| Safety System Unavailability, Heat Removal System (AFW) | 4Q/00       | 1Q/01       | 2Q/01       | 3Q/01       | 4Q/01       | 1Q/02       | 2Q/02       | 3Q/02       |
|---|-------------|-------------|-------------|-------------|-------------|-------------|-------------|-------------|
| <b>Train 1</b>  |             |             |             |             |             |             |             |             |
| Planned unavailable hours                               | 7.60        | 12.30       | 0           | 16.20       | 17.40       | 19.20       | 3.80        | 37.80       |
| Unplanned unavailable hours                             | 0           | 0           | 0           | 0           | 45.70       | 0           | 0           | 0.90        |
| Fault exposure hours                                    | 0           | 0           | 0           | 0           | 239.80      | 0           | 0           | 0           |
| Effective Reset hours                                   | 0           | 0           | 0           | 0           | 0           | 0           | 0           | 0           |
| Required hours  | 2208.00     | 2160.00     | 1276.20     | 2208.00     | 2208.00     | 1849.40     | 2184.00     | 2208.00     |
| <b>Train 2</b>  |             |             |             |             |             |             |             |             |
| Planned unavailable hours                               | 42.50       | 3.30        | 0           | 1.20        | 24.10       | 2.60        | 1.70        | 14.00       |
| Unplanned unavailable hours                             | 0           | 0           | 0           | 15.30       | 0           | 13.80       | 0           | 0           |
| Fault exposure hours                                    | 0           | 0           | 0           | 0           | 0           | 0           | 0           | 0           |
| Effective Reset hours                                   | 0           | 0           | 0           | 0           | 0           | 0           | 0           | 0           |
| Required hours  | 2208.00     | 2160.00     | 1276.20     | 2208.00     | 2208.00     | 1849.40     | 2184.00     | 2208.00     |
| <b>Train 3</b>  |             |             |             |             |             |             |             |             |
| Planned unavailable hours                               | 16.30       | 28.10       | 7.50        | 15.00       | 10.60       | 3.30        | 45.80       | 2.70        |
| Unplanned unavailable hours                             | 0           | 0.50        | 4.50        | 0           | 0           | 14.70       | 0           | 0           |
| Fault exposure hours                                    | 0           | 0           | 0           | 0           | 0           | 0           | 0           | 0           |
| Effective Reset hours                                   | 0           | 0           | 0           | 0           | 0           | 0           | 0           | 0           |
| Required hours  | 2208.00     | 2160.00     | 1276.20     | 2208.00     | 2208.00     | 1849.40     | 2184.00     | 2208.00     |
|   |             |             |             |             |             |             |             |             |
| <b>Indicator value</b>                                  | <b>1.2%</b> | <b>1.0%</b> | <b>1.0%</b> | <b>1.0%</b> | <b>1.4%</b> | <b>1.4%</b> | <b>1.5%</b> | <b>1.5%</b> |

Licensee Comments: none

### Safety System Unavailability, Residual Heat Removal System



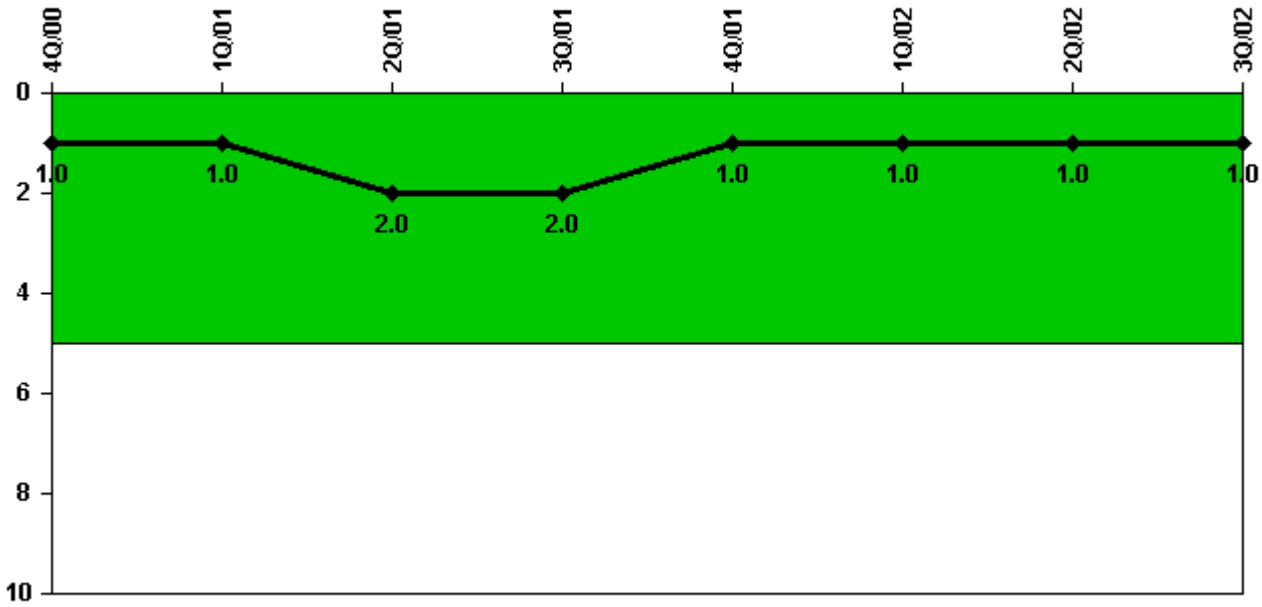
Thresholds: White > 1.5% Yellow > 5.0% Red > 10.0%

#### Notes

| Safety System Unavailability, Residual Heat Removal System | 4Q/00       | 1Q/01       | 2Q/01       | 3Q/01       | 4Q/01       | 1Q/02       | 2Q/02       | 3Q/02       |
|--|-------------|-------------|-------------|-------------|-------------|-------------|-------------|-------------|
| <b>Train 1</b>   |             |             |             |             |             |             |             |             |
| Planned unavailable hours                                  | 8.20        | 1.80        | 25.40       | 6.30        | 25.70       | 2.70        | 28.90       | 6.70        |
| Unplanned unavailable hours                                | 9.70        | 0           | 0           | 0           | 0           | 0           | 0           | 0.60        |
| Fault exposure hours                                       | 0           | 0           | 0           | 0           | 0           | 0           | 0           | 0           |
| Effective Reset hours                                      | 0           | 0           | 0           | 0           | 0           | 0           | 0           | 0           |
| Required hours   | 2208.00     | 2160.00     | 1815.90     | 2208.00     | 2208.00     | 2160.00     | 2184.00     | 2208.00     |
| <b>Train 2</b>   |             |             |             |             |             |             |             |             |
| Planned unavailable hours                                  | 5.40        | 11.70       | 1.70        | 16.70       | 1.60        | 17.80       | 22.60       | 0.40        |
| Unplanned unavailable hours                                | 0           | 0           | 0           | 0           | 4.30        | 0           | 0           | 21.70       |
| Fault exposure hours                                       | 0           | 0           | 0           | 0           | 0           | 0           | 0           | 0           |
| Effective Reset hours                                      | 0           | 0           | 0           | 0           | 0           | 0           | 0           | 0           |
| Required hours   | 2208.00     | 2160.00     | 1815.90     | 2208.00     | 2208.00     | 2160.00     | 2184.00     | 2208.00     |
|  |             |             |             |             |             |             |             |             |
| <b>Indicator value</b>                                     | <b>0.6%</b> | <b>0.5%</b> | <b>0.6%</b> | <b>0.6%</b> | <b>0.6%</b> | <b>0.6%</b> | <b>0.7%</b> | <b>0.7%</b> |

Licensee Comments: none

### Safety System Functional Failures (PWR)



Thresholds: White > 5.0

#### Notes

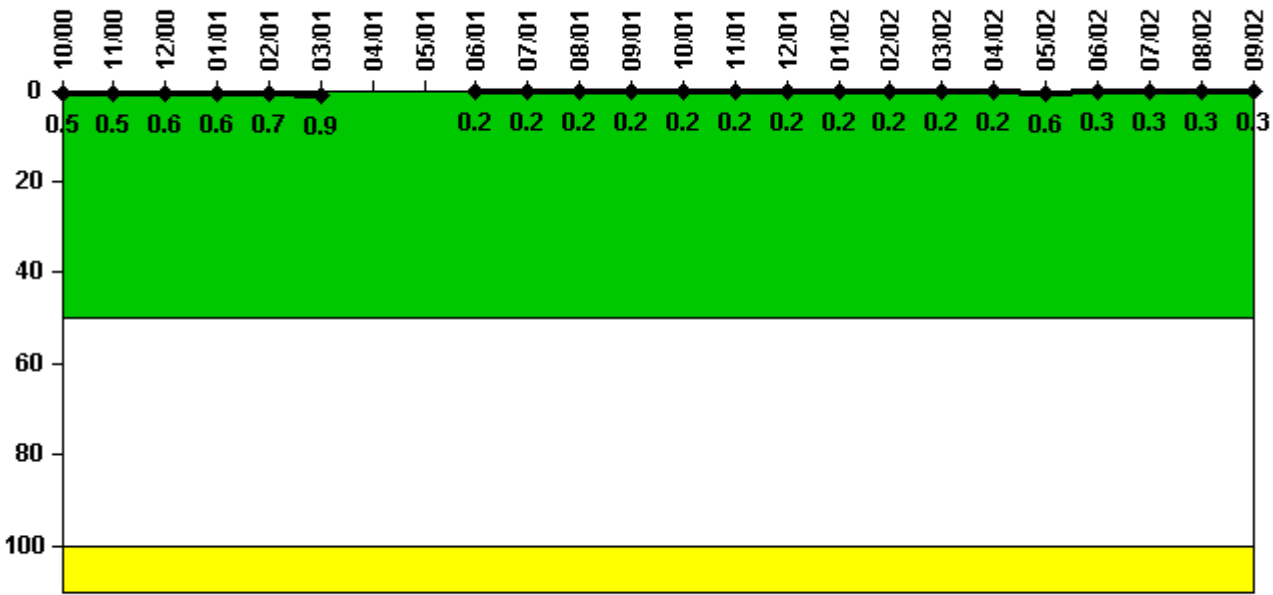
| Safety System Functional Failures (PWR) | 4Q/00 | 1Q/01 | 2Q/01 | 3Q/01 | 4Q/01 | 1Q/02 | 2Q/02 | 3Q/02 |
|---|-------|-------|-------|-------|-------|-------|-------|-------|
| Safety System Functional Failures       | 1     | 0     | 1     | 0     | 0     | 0     | 1     | 0     |
| Indicator value                         | 1     | 1     | 2     | 2     | 1     | 1     | 1     | 1     |

Licensee Comments:

2Q/02: The SSFF documented in LER 2002-005-00 was missed during PI data collection and reporting for the second quarter 2002. A SSFF value of 0 was initially reported and is being corrected to a value of 1. This change does not affect the color of the SSFF PI. This error has been entered into the licensee's corrective action program.



### Reactor Coolant System Activity



Thresholds: White > 50.0 Yellow > 100.0

### Notes

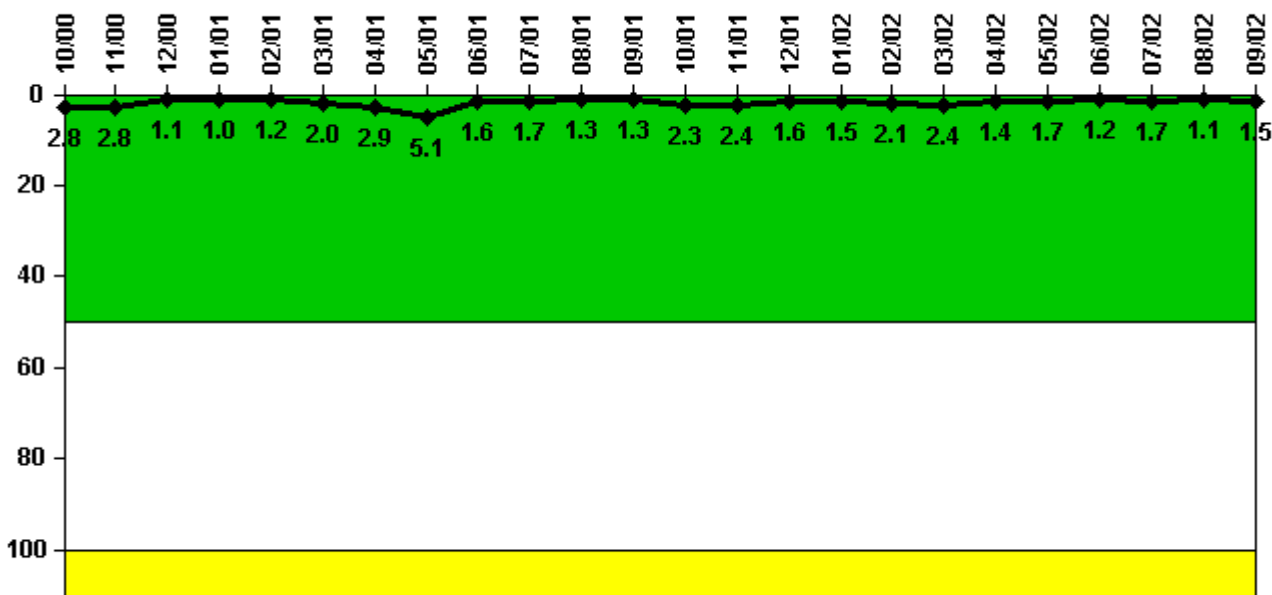
| Reactor Coolant System Activity | 10/00    | 11/00    | 12/00    | 1/01     | 2/01     | 3/01     | 4/01 | 5/01 | 6/01     | 7/01     | 8/01     | 9/01     |
|---------------------------------|----------|----------|----------|----------|----------|----------|------|------|----------|----------|----------|----------|
| Maximum activity                | 0.005150 | 0.005420 | 0.005660 | 0.005740 | 0.007000 | 0.009070 | N/A  | N/A  | 0.001510 | 0.001530 | 0.001620 | 0.001580 |
| Technical specification limit   | 1.0      | 1.0      | 1.0      | 1.0      | 1.0      | 1.0      | 1.0  | 1.0  | 1.0      | 1.0      | 1.0      | 1.0      |
| Indicator value                 | 0.5      | 0.5      | 0.6      | 0.6      | 0.7      | 0.9      | N/A  | N/A  | 0.2      | 0.2      | 0.2      | 0.2      |

| Reactor Coolant System Activity | 10/01    | 11/01    | 12/01    | 1/02     | 2/02     | 3/02     | 4/02     | 5/02     | 6/02     | 7/02     | 8/02     | 9/02     |
|---------------------------------|----------|----------|----------|----------|----------|----------|----------|----------|----------|----------|----------|----------|
| Maximum activity                | 0.001700 | 0.001720 | 0.001690 | 0.001960 | 0.001890 | 0.002290 | 0.002130 | 0.005510 | 0.002530 | 0.002520 | 0.002810 | 0.002660 |
| Technical specification limit   | 1.0      | 1.0      | 1.0      | 1.0      | 1.0      | 1.0      | 1.0      | 1.0      | 1.0      | 1.0      | 1.0      | 1.0      |
| Indicator value                 | 0.2      | 0.2      | 0.2      | 0.2      | 0.2      | 0.2      | 0.2      | 0.6      | 0.3      | 0.3      | 0.3      | 0.3      |

Licensee Comments: none

### Reactor Coolant System Leakage



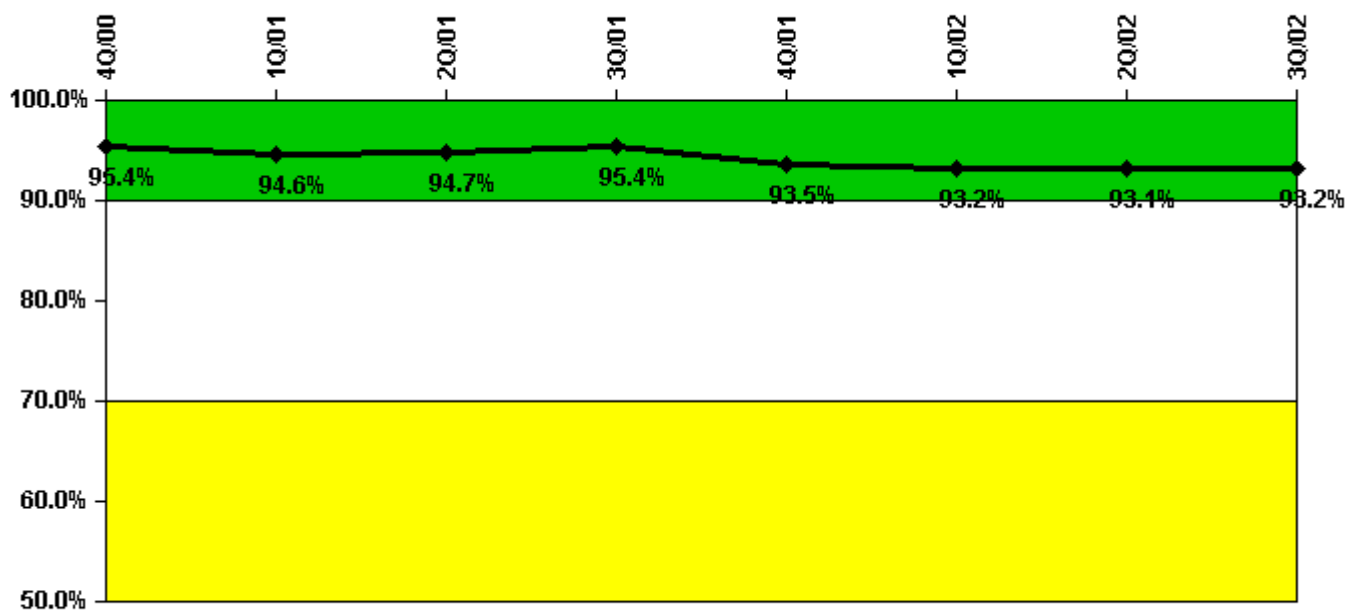
Thresholds: White > 50.0 Yellow > 100.0

#### Notes

|                                |       |       |       |       |       |       |       |       |       |       |       |       |
|--------------------------------|-------|-------|-------|-------|-------|-------|-------|-------|-------|-------|-------|-------|
| Reactor Coolant System Leakage | 10/00 | 11/00 | 12/00 | 1/01  | 2/01  | 3/01  | 4/01  | 5/01  | 6/01  | 7/01  | 8/01  | 9/01  |
| Maximum leakage                | 0.281 | 0.280 | 0.110 | 0.100 | 0.120 | 0.199 | 0.294 | 0.506 | 0.160 | 0.170 | 0.127 | 0.134 |
| Technical specification limit  | 10.0  | 10.0  | 10.0  | 10.0  | 10.0  | 10.0  | 10.0  | 10.0  | 10.0  | 10.0  | 10.0  | 10.0  |
| Indicator value                | 2.8   | 2.8   | 1.1   | 1.0   | 1.2   | 2.0   | 2.9   | 5.1   | 1.6   | 1.7   | 1.3   | 1.3   |
| Reactor Coolant System Leakage | 10/01 | 11/01 | 12/01 | 1/02  | 2/02  | 3/02  | 4/02  | 5/02  | 6/02  | 7/02  | 8/02  | 9/02  |
| Maximum leakage                | 0.229 | 0.241 | 0.158 | 0.154 | 0.208 | 0.244 | 0.135 | 0.174 | 0.119 | 0.173 | 0.105 | 0.148 |
| Technical specification limit  | 10.0  | 10.0  | 10.0  | 10.0  | 10.0  | 10.0  | 10.0  | 10.0  | 10.0  | 10.0  | 10.0  | 10.0  |
| Indicator value                | 2.3   | 2.4   | 1.6   | 1.5   | 2.1   | 2.4   | 1.4   | 1.7   | 1.2   | 1.7   | 1.1   | 1.5   |

Licensee Comments: none

### Drill/Exercise Performance



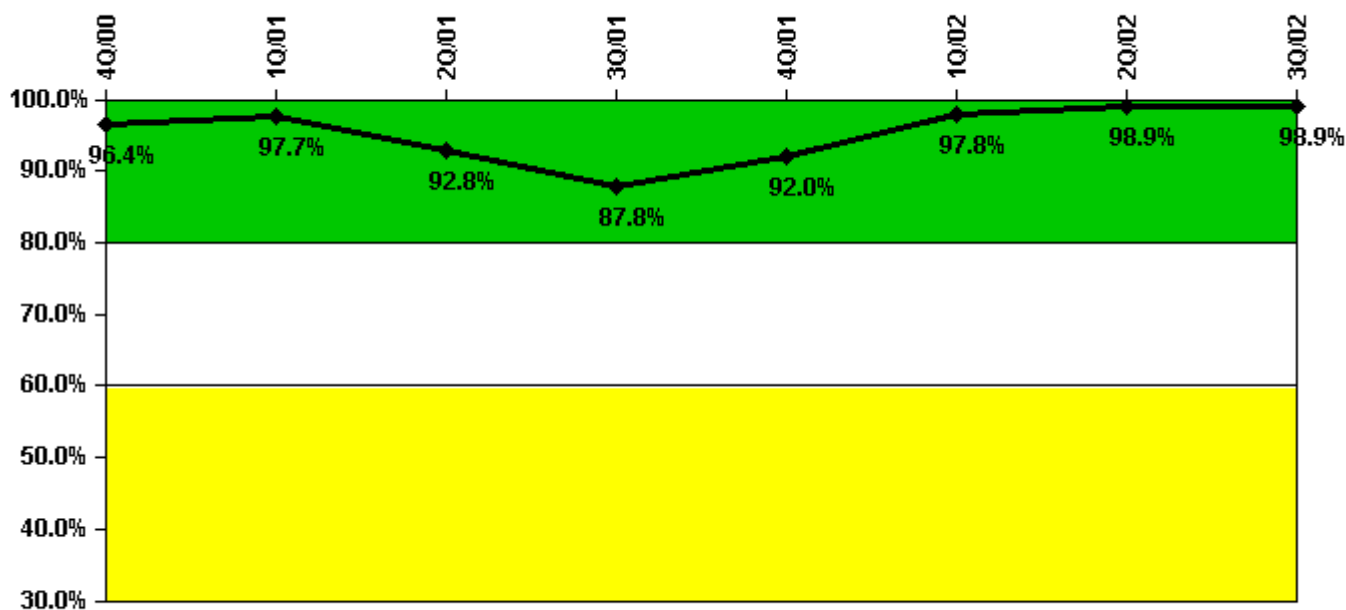
Thresholds: White < 90.0% Yellow < 70.0%

### Notes

| Drill/Exercise Performance | 4Q/00 | 1Q/01 | 2Q/01 | 3Q/01 | 4Q/01 | 1Q/02 | 2Q/02 | 3Q/02 |
|----------------------------|-------|-------|-------|-------|-------|-------|-------|-------|
| Successful opportunities   | 35.0  | 50.0  | 0     | 29.0  | 79.0  | 51.0  | 33.0  | 38.0  |
| Total opportunities        | 36.0  | 52.0  | 0     | 31.0  | 88.0  | 55.0  | 35.0  | 41.0  |
|                            |       |       |       |       |       |       |       |       |
| Indicator value            | 95.4% | 94.6% | 94.7% | 95.4% | 93.5% | 93.2% | 93.1% | 93.2% |

Licensee Comments: none

### ERO Drill Participation



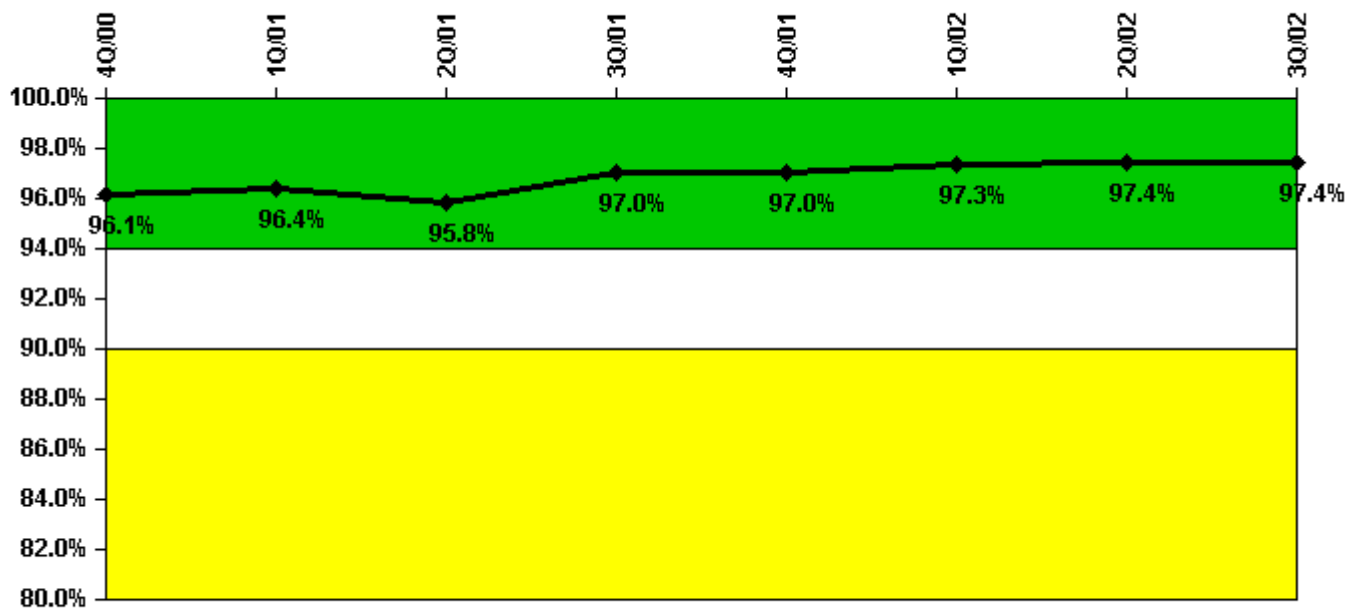
Thresholds: White < 80.0% Yellow < 60.0%

#### Notes

| ERO Drill Participation     | 4Q/00 | 1Q/01 | 2Q/01 | 3Q/01 | 4Q/01 | 1Q/02 | 2Q/02 | 3Q/02 |
|-----------------------------|-------|-------|-------|-------|-------|-------|-------|-------|
| Participating Key personnel | 81.0  | 84.0  | 77.0  | 79.0  | 81.0  | 87.0  | 88.0  | 91.0  |
| Total Key personnel         | 84.0  | 86.0  | 83.0  | 90.0  | 88.0  | 89.0  | 89.0  | 92.0  |
|                             |       |       |       |       |       |       |       |       |
| Indicator value             | 96.4% | 97.7% | 92.8% | 87.8% | 92.0% | 97.8% | 98.9% | 98.9% |

Licensee Comments: none

### Alert & Notification System



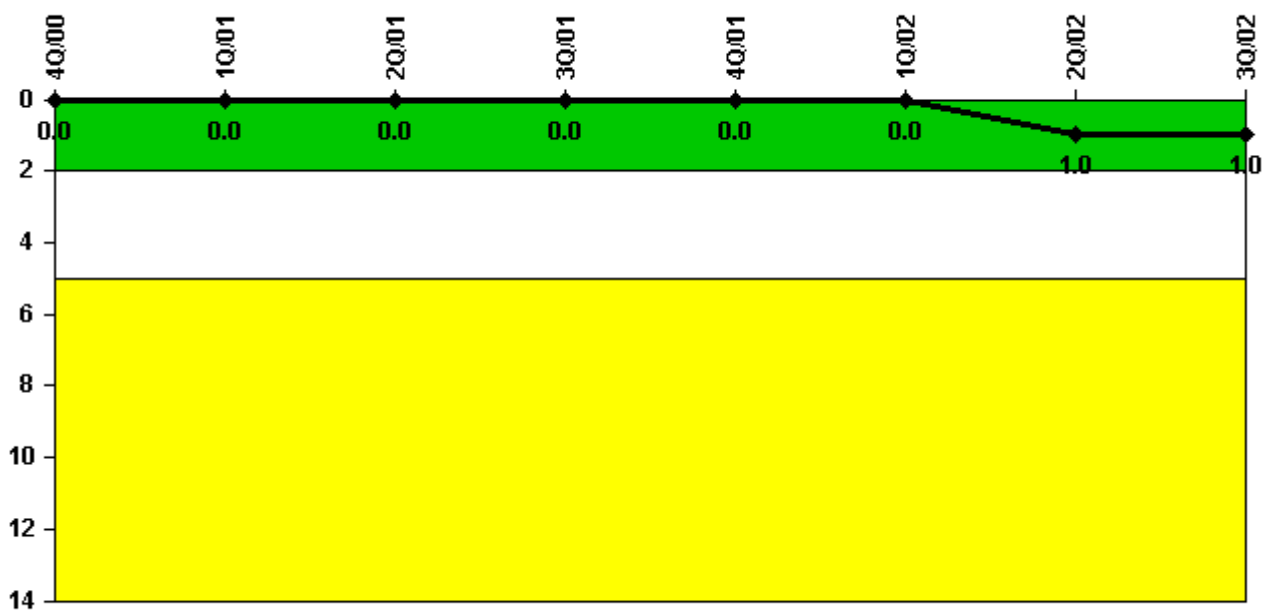
Thresholds: White < 94.0% Yellow < 90.0%

#### Notes

| Alert & Notification System | 4Q/00 | 1Q/01 | 2Q/01 | 3Q/01 | 4Q/01 | 1Q/02 | 2Q/02 | 3Q/02 |
|-----------------------------|-------|-------|-------|-------|-------|-------|-------|-------|
| Successful siren-tests      | 82    | 80    | 81    | 83    | 82    | 84    | 84    | 86    |
| Total sirens-tests          | 84    | 84    | 84    | 84    | 84    | 87    | 87    | 87    |
|                             |       |       |       |       |       |       |       |       |
| Indicator value             | 96.1% | 96.4% | 95.8% | 97.0% | 97.0% | 97.3% | 97.4% | 97.4% |

Licensee Comments: none

### Occupational Exposure Control Effectiveness



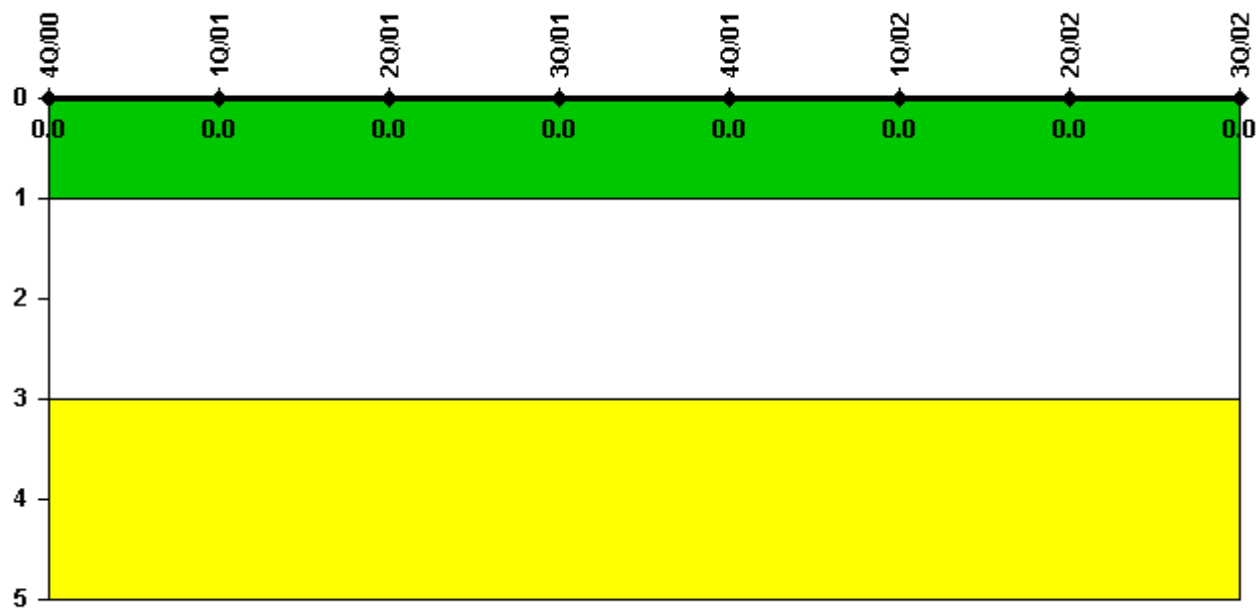
Thresholds: White > 2.0 Yellow > 5.0

#### Notes

| Occupational Exposure Control Effectiveness | 4Q/00 | 1Q/01 | 2Q/01 | 3Q/01 | 4Q/01 | 1Q/02 | 2Q/02 | 3Q/02 |
|---|-------|-------|-------|-------|-------|-------|-------|-------|
| High radiation area occurrences             | 0     | 0     | 0     | 0     | 0     | 0     | 1     | 0     |
| Very high radiation area occurrences        | 0     | 0     | 0     | 0     | 0     | 0     | 0     | 0     |
| Unintended exposure occurrences             | 0     | 0     | 0     | 0     | 0     | 0     | 0     | 0     |
| Indicator value                             | 0     | 0     | 0     | 0     | 0     | 0     | 1     | 1     |

Licensee Comments: none

### RETS/ODCM Radiological Effluent



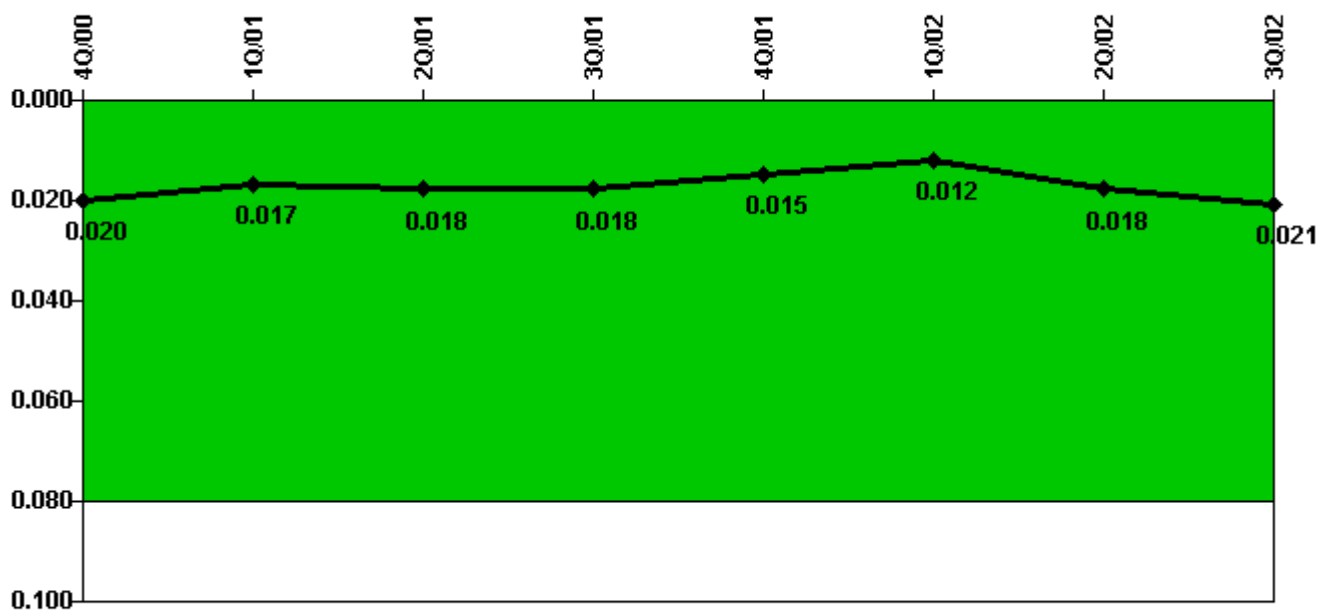
Thresholds: White > 1.0 Yellow > 3.0

#### Notes

| RETS/ODCM Radiological Effluent | 4Q/00 | 1Q/01 | 2Q/01 | 3Q/01 | 4Q/01 | 1Q/02 | 2Q/02 | 3Q/02 |
|---------------------------------|-------|-------|-------|-------|-------|-------|-------|-------|
| RETS/ODCM occurrences           | 0     | 0     | 0     | 0     | 0     | 0     | 0     | 0     |
|                                 |       |       |       |       |       |       |       |       |
| Indicator value                 | 0     | 0     | 0     | 0     | 0     | 0     | 0     | 0     |

Licensee Comments: none

### Protected Area Security Performance Index



Thresholds: White > 0.080

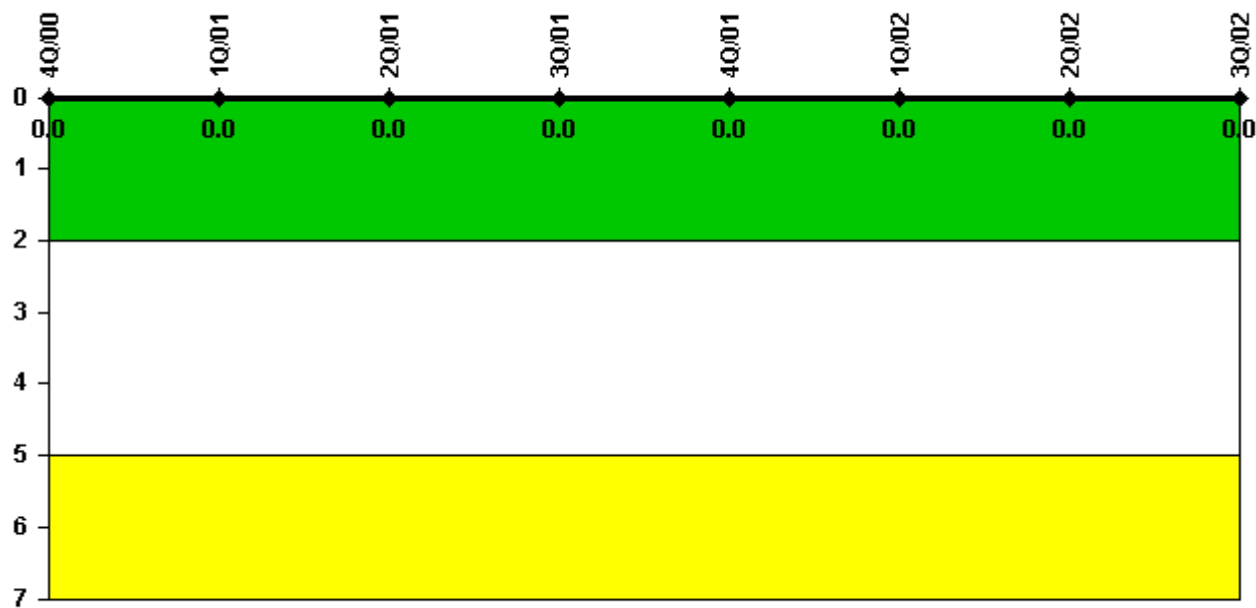
#### Notes

| Protected Area Security Performance Index | 4Q/00  | 1Q/01 | 2Q/01 | 3Q/01 | 4Q/01  | 1Q/02 | 2Q/02  | 3Q/02 |
|---|--------|-------|-------|-------|--------|-------|--------|-------|
| IDS compensatory hours                    | 216.10 | 89.50 | 63.90 | 61.80 | 130.60 | 6.30  | 218.30 | 81.30 |
| CCTV compensatory hours                   | 0.3    | 0.1   | 5.1   | 6.7   | 1.5    | 1.1   | 12.6   | 35.4  |
| IDS normalization factor                  | 1.40   | 1.40  | 1.40  | 1.40  | 1.40   | 1.40  | 1.40   | 1.40  |
| CCTV normalization factor                 | 1.0    | 1.0   | 1.0   | 1.0   | 1.0    | 1.0   | 1.0    | 1.0   |
|   |        |       |       |       |        |       |        |       |
| Index Value                               | 0.020  | 0.017 | 0.018 | 0.018 | 0.015  | 0.012 | 0.018  | 0.021 |

Licensee Comments: none



### Personnel Screening Program



Thresholds: White > 2.0 Yellow > 5.0

#### Notes

| Personnel Screening Program | 4Q/00 | 1Q/01 | 2Q/01 | 3Q/01 | 4Q/01 | 1Q/02 | 2Q/02 | 3Q/02 |
|-----------------------------|-------|-------|-------|-------|-------|-------|-------|-------|
| Program failures            | 0     | 0     | 0     | 0     | 0     | 0     | 0     | 0     |
|                             |       |       |       |       |       |       |       |       |
| Indicator value             | 0     | 0     | 0     | 0     | 0     | 0     | 0     | 0     |

Licensee Comments: none

### FFD/Personnel Reliability



Thresholds: White > 2.0 Yellow > 5.0

#### Notes

| FFD/Personnel Reliability | 4Q/00 | 1Q/01 | 2Q/01 | 3Q/01 | 4Q/01 | 1Q/02 | 2Q/02 | 3Q/02 |
|---------------------------|-------|-------|-------|-------|-------|-------|-------|-------|
| Program Failures          | 0     | 0     | 0     | 0     | 0     | 0     | 0     | 0     |
|                           |       |       |       |       |       |       |       |       |
| Indicator value           | 0     | 0     | 0     | 0     | 0     | 0     | 0     | 0     |

Licensee Comments: none

▲ [PI Summary](#) | [Inspection Findings Summary](#) | [Reactor Oversight Process](#)

Last Modified: October 22, 2002