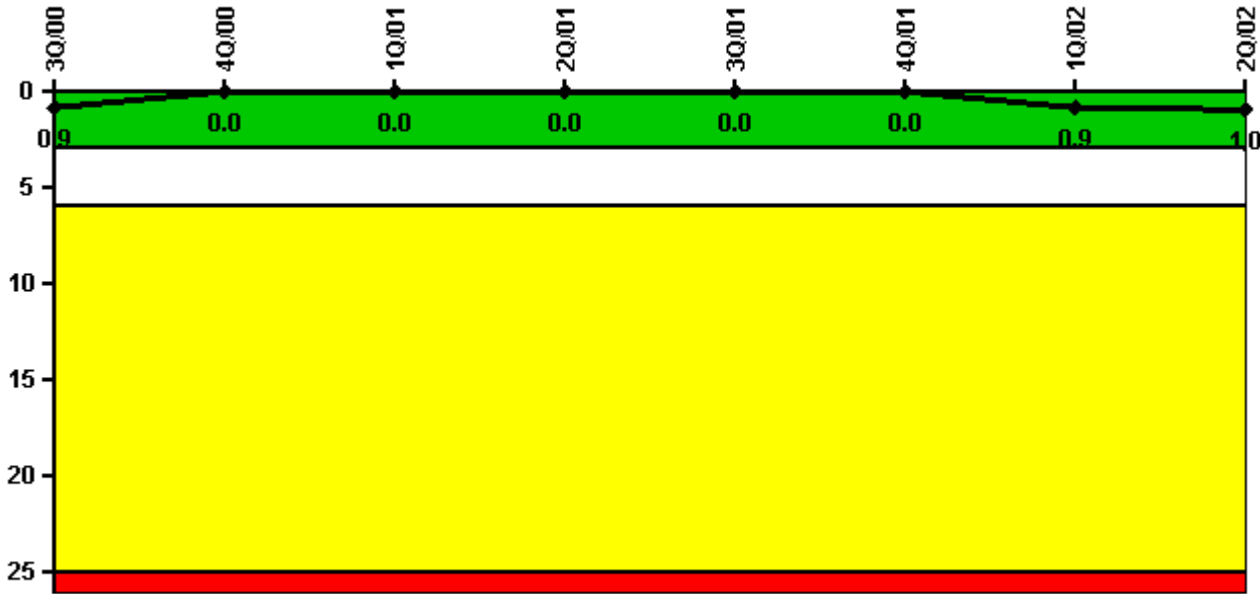


Diablo Canyon 2

2Q/2002 Performance Indicators

Licensee's General Comments: none

Unplanned Scrams per 7000 Critical Hrs



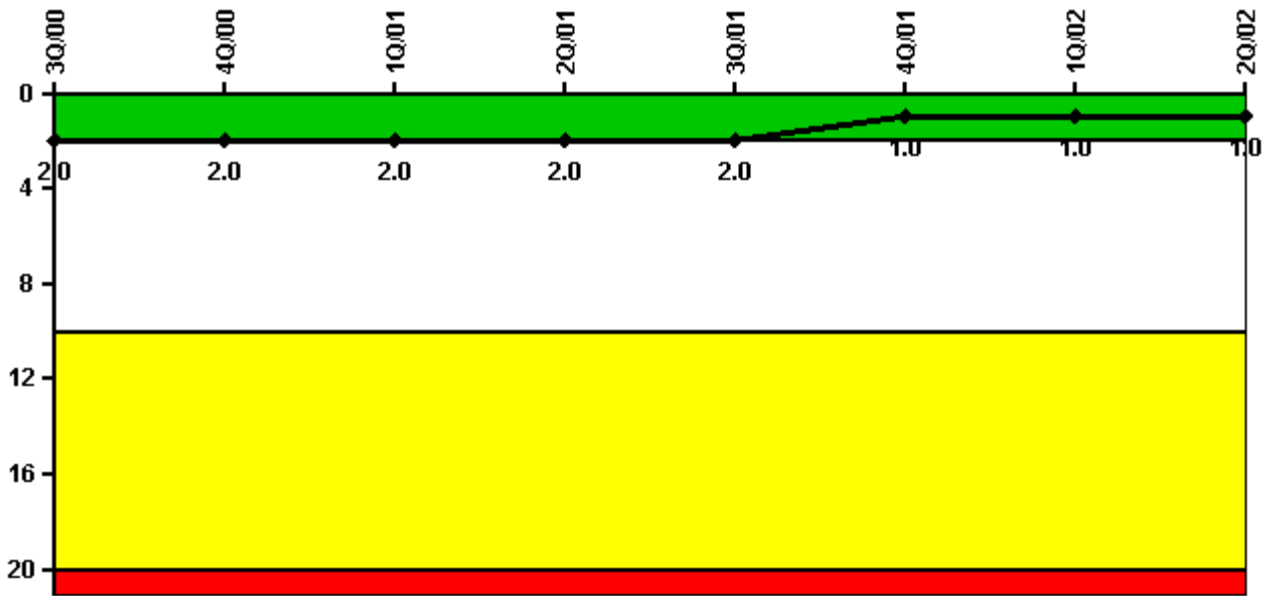
Thresholds: White > 3.0 Yellow > 6.0 Red > 25.0

Notes

Unplanned Scrams per 7000 Critical Hrs	3Q/00	4Q/00	1Q/01	2Q/01	3Q/01	4Q/01	1Q/02	2Q/02
Unplanned scrams	0	0	0	0	0	0	1.0	0
Critical hours	1983.3	2209.0	2160.0	1545.0	2208.0	2209.0	2128.1	720.0
Indicator value	0.9	0	0	0	0	0	0.9	1.0

Licensee Comments: none

Scrams with Loss of Normal Heat Removal



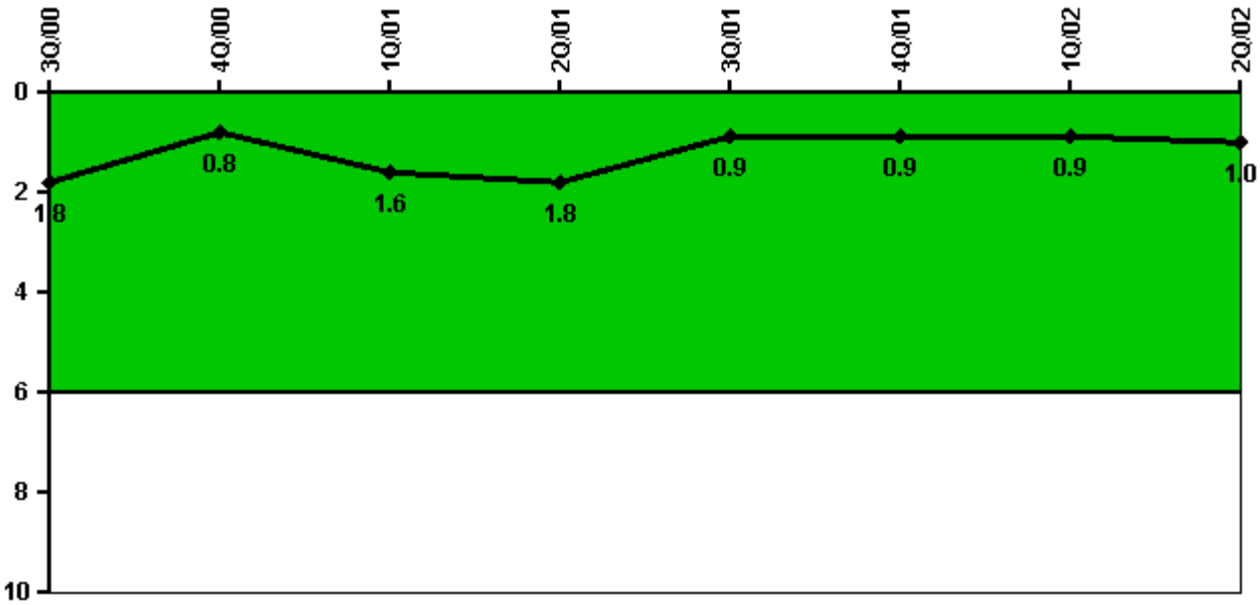
Thresholds: White > 2.0 Yellow > 10.0 Red > 20.0

Notes

Scrams with Loss of Normal Heat Removal	3Q/00	4Q/00	1Q/01	2Q/01	3Q/01	4Q/01	1Q/02	2Q/02
Scrams	0	0	0	0	0	0	0	0
Indicator value	2.0	2.0	2.0	2.0	2.0	1.0	1.0	1.0

Licensee Comments: none

Unplanned Power Changes per 7000 Critical Hrs



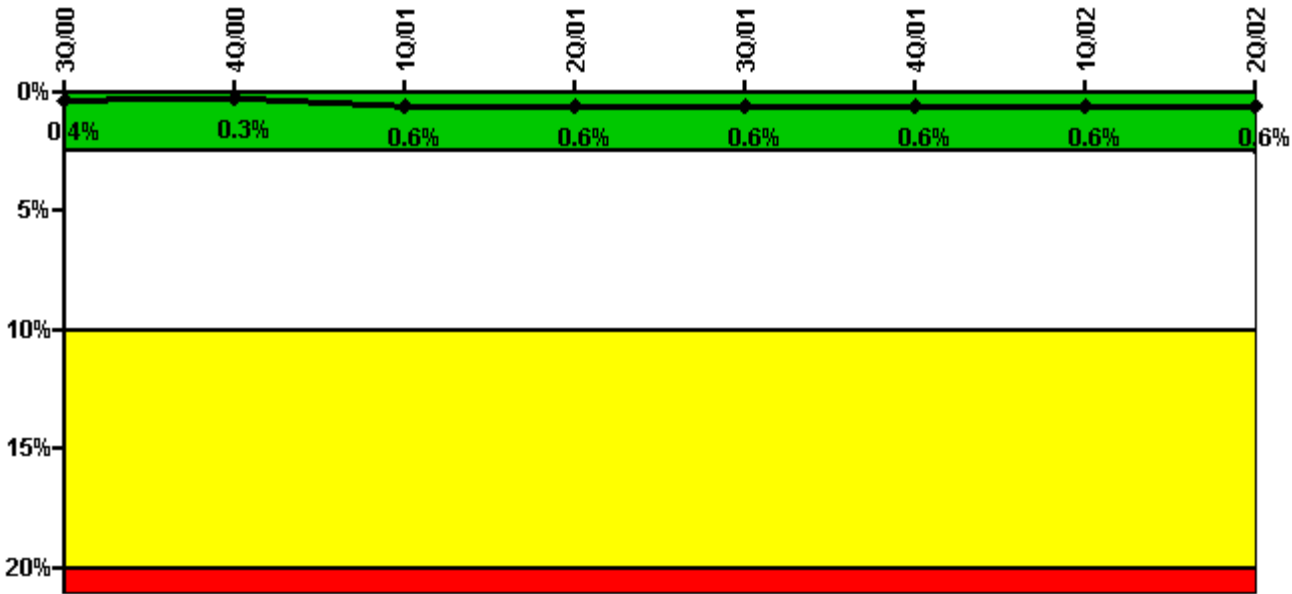
Thresholds: White > 6.0

Notes

Unplanned Power Changes per 7000 Critical Hrs	3Q/00	4Q/00	1Q/01	2Q/01	3Q/01	4Q/01	1Q/02	2Q/02
Unplanned power changes	1.0	0	1.0	0	0	0	1.0	0
Critical hours	1983.3	2209.0	2160.0	1545.0	2208.0	2209.0	2128.1	720.0
Indicator value	1.8	0.8	1.6	1.8	0.9	0.9	0.9	1.0

Licensee Comments: none

Safety System Unavailability, Emergency AC Power, >2EDG



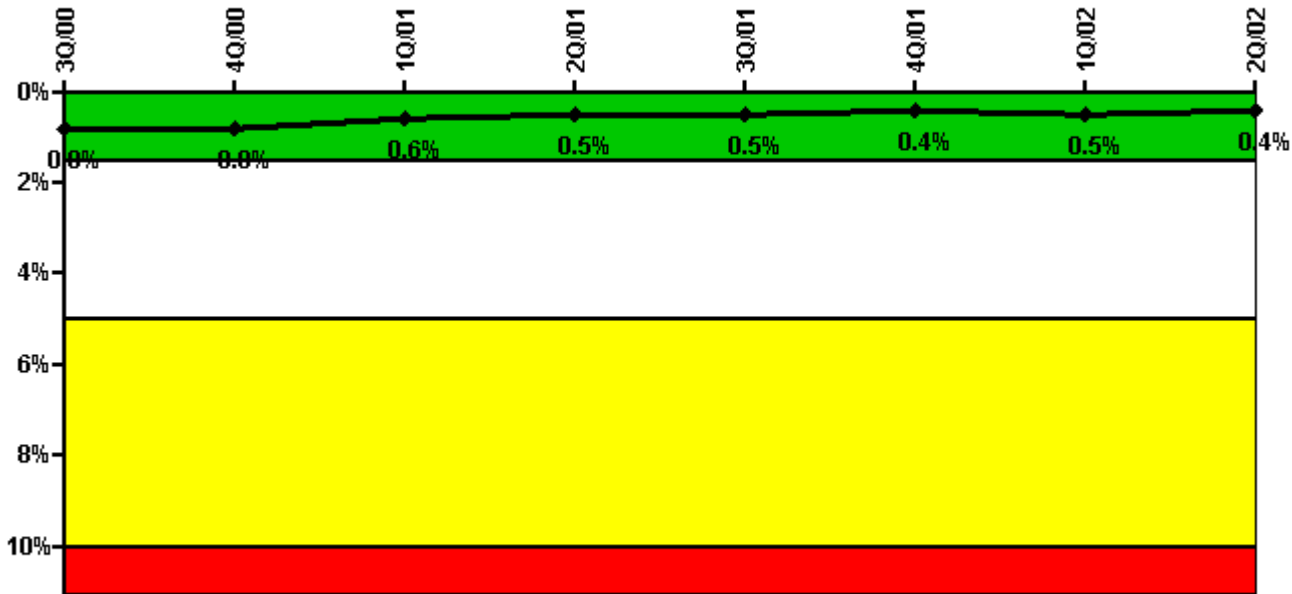
Thresholds: White > 2.5% Yellow > 10.0% Red > 20.0%

Notes

Safety System Unavailability, Emergency AC Power, >2EDG	3Q/00	4Q/00	1Q/01	2Q/01	3Q/01	4Q/01	1Q/02	2Q/02
Train 1								
Planned unavailable hours	1.80	0.20	59.10	0.10	0.10	0.10	29.90	6.80
Unplanned unavailable hours	0	0	15.30	0	0	0	0	0
Fault exposure hours	0	0	0	0	0	0	0	0
Effective Reset hours	0	0	0	0	0	0	0	0
Required hours	2208.00	2209.00	2160.00	1598.00	2208.00	2209.00	2160.00	2183.00
Train 2								
Planned unavailable hours	1.30	0.10	66.20	0.10	0.30	0.10	29.00	1.90
Unplanned unavailable hours	0	0	6.10	0	0	0	0	3.10
Fault exposure hours	0	0	0	0	0	0	0	0
Effective Reset hours	0	0	0	0	0	0	0	0
Required hours	2208.00	2209.00	2160.00	1598.00	2208.00	2209.00	2160.00	2183.00
Train 3								
Planned unavailable hours	1.30	0.10	85.60	0.20	0.10	0.10	29.90	5.70
Unplanned unavailable hours	0	0	0	0	0	0	0	0
Fault exposure hours	0	0	0	0	0	0	0	0
Effective Reset hours	0	0	0	0	0	0	0	0
Required hours	2208.00	2209.00	2160.00	1598.00	2208.00	2209.00	2160.00	2183.00
Indicator value	0.4%	0.3%	0.6%	0.6%	0.6%	0.6%	0.6%	0.6%

Licensee Comments: none

Safety System Unavailability, High Pressure Injection System (HPSI)



Thresholds: White > 1.5% Yellow > 5.0% Red > 10.0%

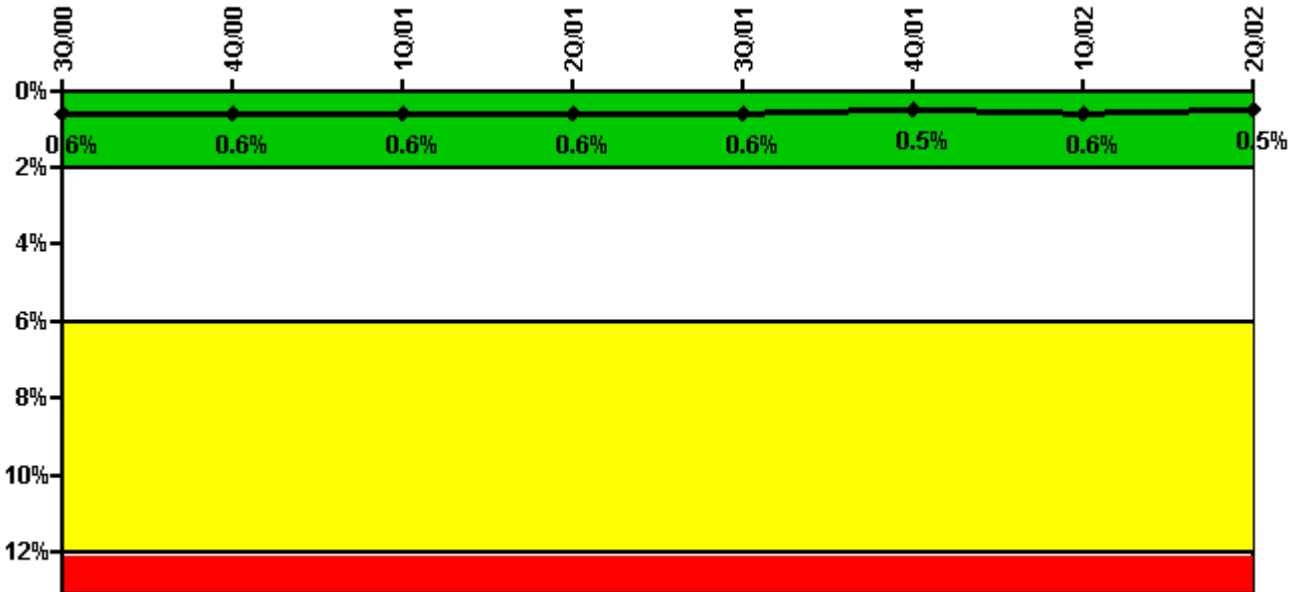
Notes

Safety System Unavailability, High Pressure Injection System (HPSI)	3Q/00	4Q/00	1Q/01	2Q/01	3Q/01	4Q/01	1Q/02	2Q/02
Train 1								
Planned unavailable hours	18.60	0	22.60	0	0	13.50	0	0
Unplanned unavailable hours	0	0	0	0	0	0	0	0
Fault exposure hours	0	0	0	0	0	0	0	0
Effective Reset hours	0	0	0	0	0	0	0	0
Required hours	1983.30	2209.00	2160.00	1544.00	2208.00	2209.00	2128.10	2183.00
Train 2								
Planned unavailable hours	0	12.30	0.10	0	20.10	0	0	14.40
Unplanned unavailable hours	0	0	0	0	0	0	0	0
Fault exposure hours	0	0	0	0	0	0	0	0
Effective Reset hours	0	0	0	0	0	0	0	0
Required hours	1983.30	2209.00	2160.00	1544.00	2208.00	2209.00	2128.10	2183.00
Train 3								
Planned unavailable hours	0.20	21.80	0	0.50	8.40	0.40	14.85	0.20
Unplanned unavailable hours	0	0	0	0	0	0	0	0
Fault exposure hours	0	0	0	0	0	0	0	0
Effective Reset hours	0	0	0	0	0	0	0	0
Required hours	1983.30	2209.00	2160.00	1544.00	2208.00	2209.00	2128.10	2183.00
Train 4								

Planned unavailable hours	12.20	0.10	24.00	1.00	12.80	11.30	0.35	0.30
Unplanned unavailable hours	0	0	0	0	0	0	0	0
Fault exposure hours	0	0	0	0	0	0	0	0
Effective Reset hours	0	0	0	0	0	0	0	0
Required hours	1983.30	2209.00	2160.00	1544.00	2208.00	2209.00	2128.10	2183.00
Indicator value	0.8%	0.8%	0.6%	0.5%	0.5%	0.4%	0.5%	0.4%

Licensee Comments: none

Safety System Unavailability, Heat Removal System (AFW)



Thresholds: White > 2.0% Yellow > 6.0% Red > 12.0%

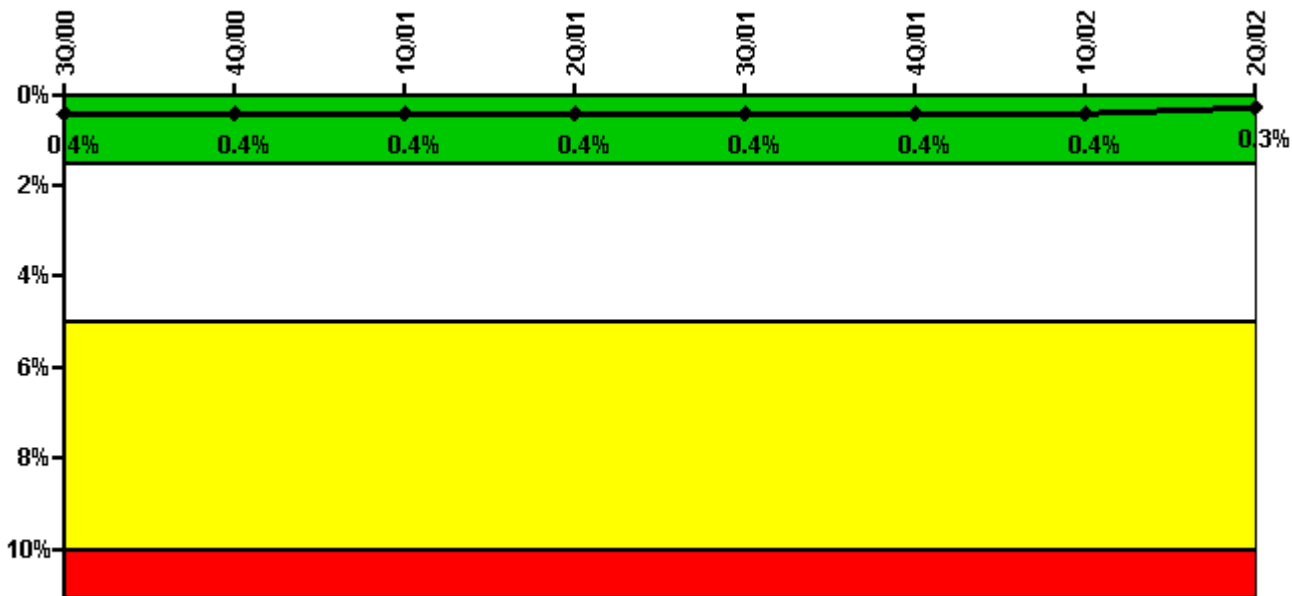
Notes

Safety System Unavailability, Heat Removal System (AFW)	3Q/00	4Q/00	1Q/01	2Q/01	3Q/01	4Q/01	1Q/02	2Q/02
Train 1								
Planned unavailable hours	16.50	15.50	1.80	18.50	23.50	2.20	19.90	6.10
Unplanned unavailable hours	0	0	0	0	0	0	2.10	0
Fault exposure hours	0	0	0	0	0	0	0	0
Effective Reset hours	0	0	0	0	0	0	0	0
Required hours	1983.30	2209.00	2160.00	1544.00	2208.00	2209.00	2128.10	2183.00
Train 2								
Planned unavailable hours	14.20	1.60	20.80	1.90	1.10	17.10	1.30	10.20
Unplanned unavailable hours	0	0	0	0	0	0	0.50	0

Fault exposure hours	0	0	0	0	0	0	0	0
Effective Reset hours	0	0	0	0	0	0	0	0
Required hours	1983.30	2209.00	2160.00	1544.00	2208.00	2209.00	2128.10	2183.00
Train 3								
Planned unavailable hours	0.80	12.90	1.70	10.80	24.00	1.70	11.20	1.00
Unplanned unavailable hours	0	0	0	0	0	0	0	0
Fault exposure hours	0	0	0	0	0	0	0	0
Effective Reset hours	0	0	0	0	0	0	0	0
Required hours	1983.30	2209.00	2160.00	1544.00	2208.00	2209.00	2128.10	2183.00
Indicator value	0.6%	0.6%	0.6%	0.6%	0.6%	0.5%	0.6%	0.5%

Licensee Comments: none

Safety System Unavailability, Residual Heat Removal System



Thresholds: White > 1.5% Yellow > 5.0% Red > 10.0%

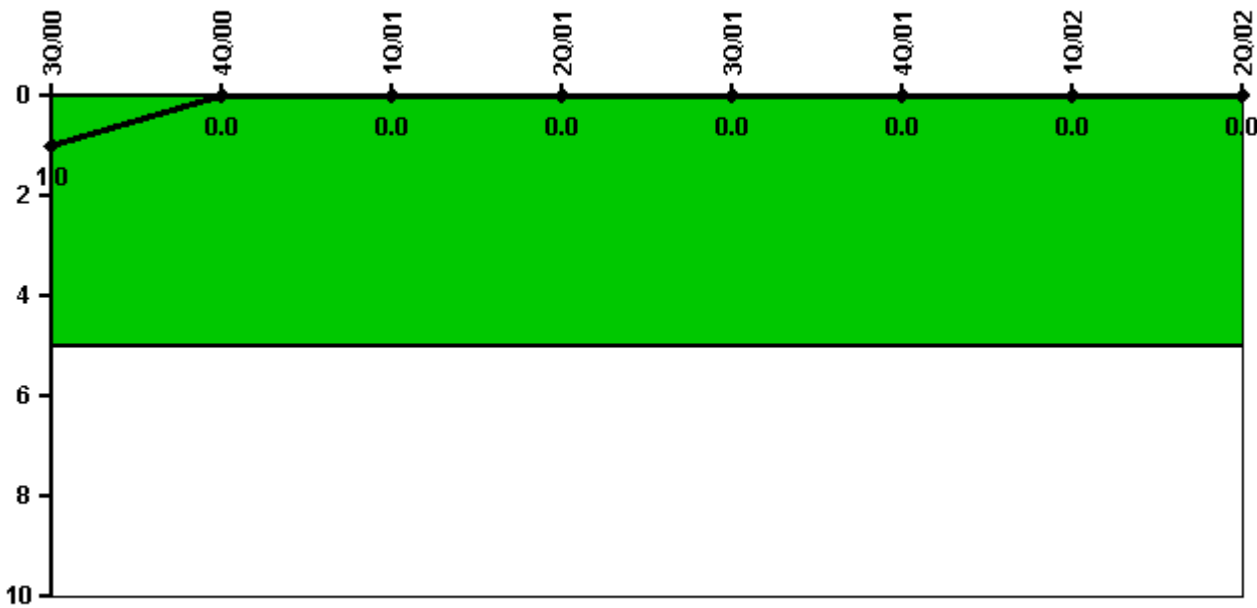
Notes

Safety System Unavailability, Residual Heat Removal System	3Q/00	4Q/00	1Q/01	2Q/01	3Q/01	4Q/01	1Q/02	2Q/02
Train 1								
Planned unavailable hours	11.30	0.40	1.30	13.40	0.60	13.80	1.00	19.90
Unplanned unavailable hours	0	9.00	0	0	0	0	0	0
Fault exposure hours	0	0	0	0	0	0	0	0
Effective Reset hours	0	0	0	0	0	0	0	0

Required hours	2208.00	2209.00	2160.00	1598.00	2208.00	2209.00	2160.00	2183.00
Train 2								
Planned unavailable hours	0.10	14.60	0.90	0	9.00	0.10	0.60	17.90
Unplanned unavailable hours	0	0	0	0	0	0	0	0
Fault exposure hours	0	0	0	0	0	0	0	0
Effective Reset hours	0	0	0	0	0	0	0	0
Required hours	2208.00	2209.00	2160.00	1598.00	2208.00	2209.00	2160.00	2183.00
Indicator value	0.4%	0.4%	0.4%	0.4%	0.4%	0.4%	0.4%	0.3%

Licensee Comments: none

Safety System Functional Failures (PWR)



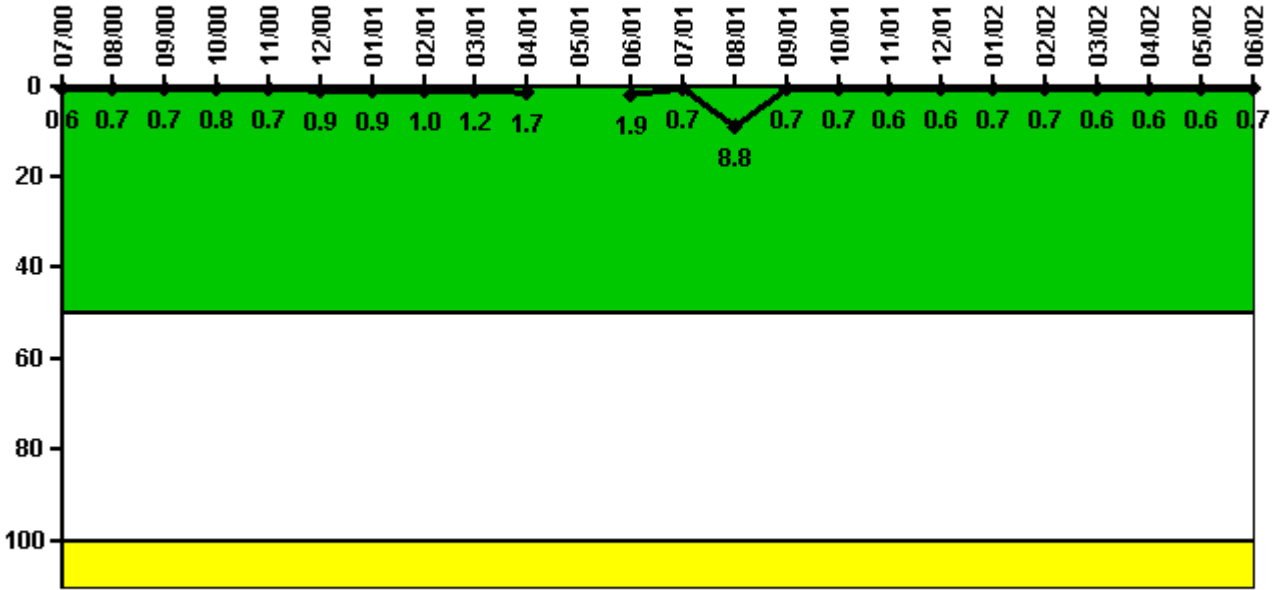
Thresholds: White > 5.0

Notes

Safety System Functional Failures (PWR)	3Q/00	4Q/00	1Q/01	2Q/01	3Q/01	4Q/01	1Q/02	2Q/02
Safety System Functional Failures	0	0	0	0	0	0	0	0
Indicator value	1	0	0	0	0	0	0	0

Licensee Comments: none

Reactor Coolant System Activity



Thresholds: White > 50.0 Yellow > 100.0

Notes

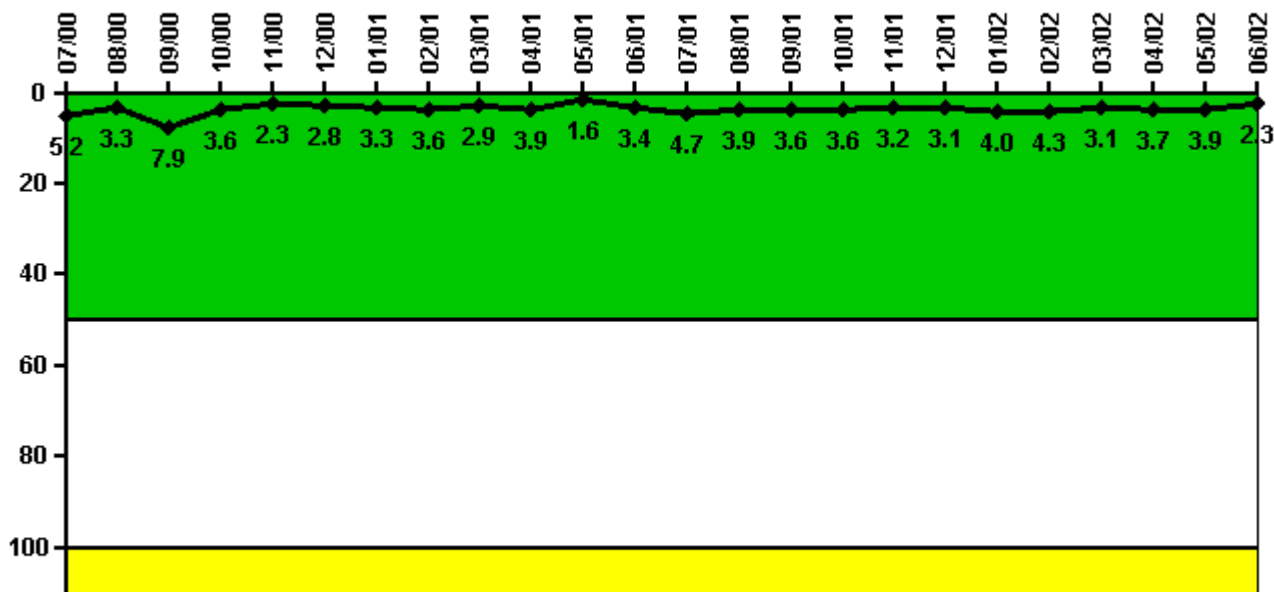
Reactor Coolant System Activity	7/00	8/00	9/00	10/00	11/00	12/00	1/01	2/01	3/01	4/01	5/01	6/01
Maximum activity	0.004390	0.004800	0.004900	0.005530	0.005320	0.006130	0.006110	0.006920	0.005550	0.007800	N/A	0.013600
Technical specification limit	0.7	0.7	0.7	0.7	0.7	0.7	0.7	0.7	0.5	0.5	N/A	0.7
Indicator value	0.6	0.7	0.7	0.8	0.7	0.9	0.9	1.0	1.2	1.7	N/A	1.9

Reactor Coolant System Activity	7/01	8/01	9/01	10/01	11/01	12/01	1/02	2/02	3/02	4/02	5/02	6/02
Maximum activity	0.005120	0.062600	0.005060	0.005300	0.004370	0.004070	0.004870	0.004940	0.004130	0.004490	0.004510	0.005070
Technical specification limit	0.7	0.7	0.7	0.7	0.7	0.7	0.7	0.7	0.7	0.7	0.7	0.7
Indicator value	0.7	8.8	0.7	0.7	0.6	0.6	0.7	0.7	0.6	0.6	0.6	0.7

Licensee Comments:

6/02: The limits for RCS dose equivalent I-131 specific activity are being administratively controlled at lower values (varies based on RCS letdown flow rate) than the Technical Specification limit of 1.0 micro Curies per gram. The reduced limits are to compensate for non-conservatism identified in a vendor's calculation for iodine appearance rates utilized in accident dose analyses. The reduced limits will remain in effect until affected analyses are revised.

Reactor Coolant System Leakage



Thresholds: White > 50.0 Yellow > 100.0

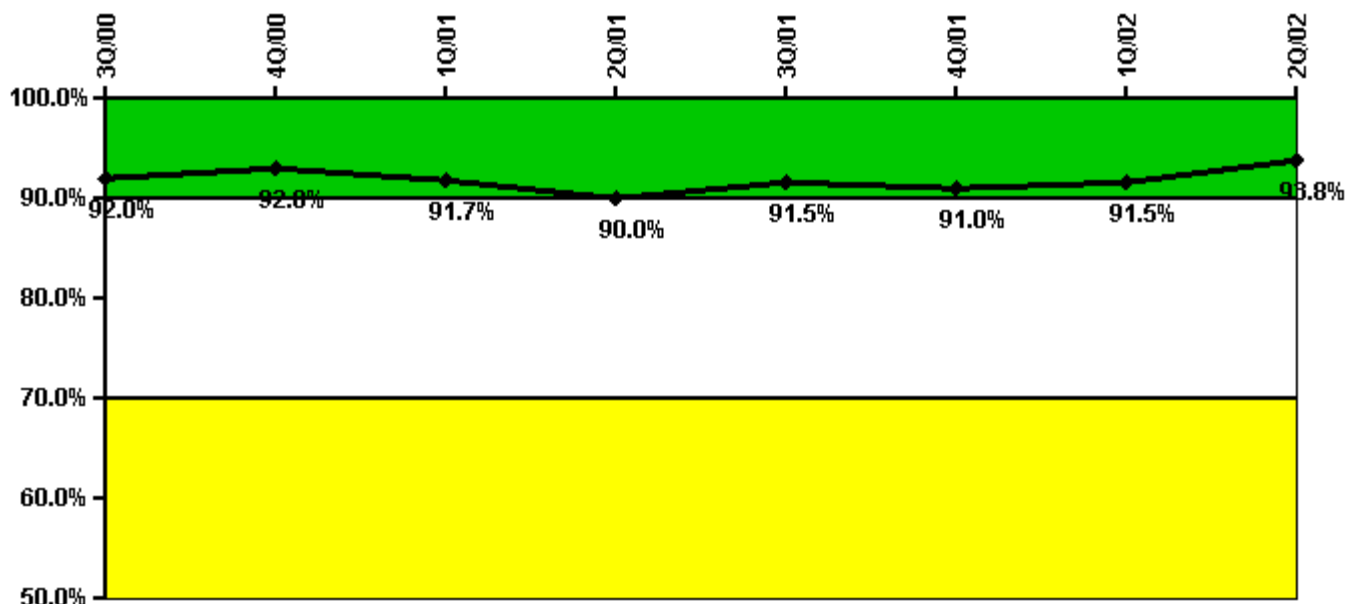
Notes

Reactor Coolant System Leakage	7/00	8/00	9/00	10/00	11/00	12/00	1/01	2/01	3/01	4/01	5/01	6/01
Maximum leakage	0.515	0.325	0.785	0.364	0.226	0.282	0.328	0.362	0.291	0.388	0.162	0.336
Technical specification limit	10.0	10.0	10.0	10.0	10.0	10.0	10.0	10.0	10.0	10.0	10.0	10.0
Indicator value	5.2	3.3	7.9	3.6	2.3	2.8	3.3	3.6	2.9	3.9	1.6	3.4

Reactor Coolant System Leakage	7/01	8/01	9/01	10/01	11/01	12/01	1/02	2/02	3/02	4/02	5/02	6/02
Maximum leakage	0.471	0.394	0.356	0.363	0.323	0.314	0.395	0.425	0.305	0.374	0.394	0.227
Technical specification limit	10.0	10.0	10.0	10.0	10.0	10.0	10.0	10.0	10.0	10.0	10.0	10.0
Indicator value	4.7	3.9	3.6	3.6	3.2	3.1	4.0	4.3	3.1	3.7	3.9	2.3

Licensee Comments: none

Drill/Exercise Performance



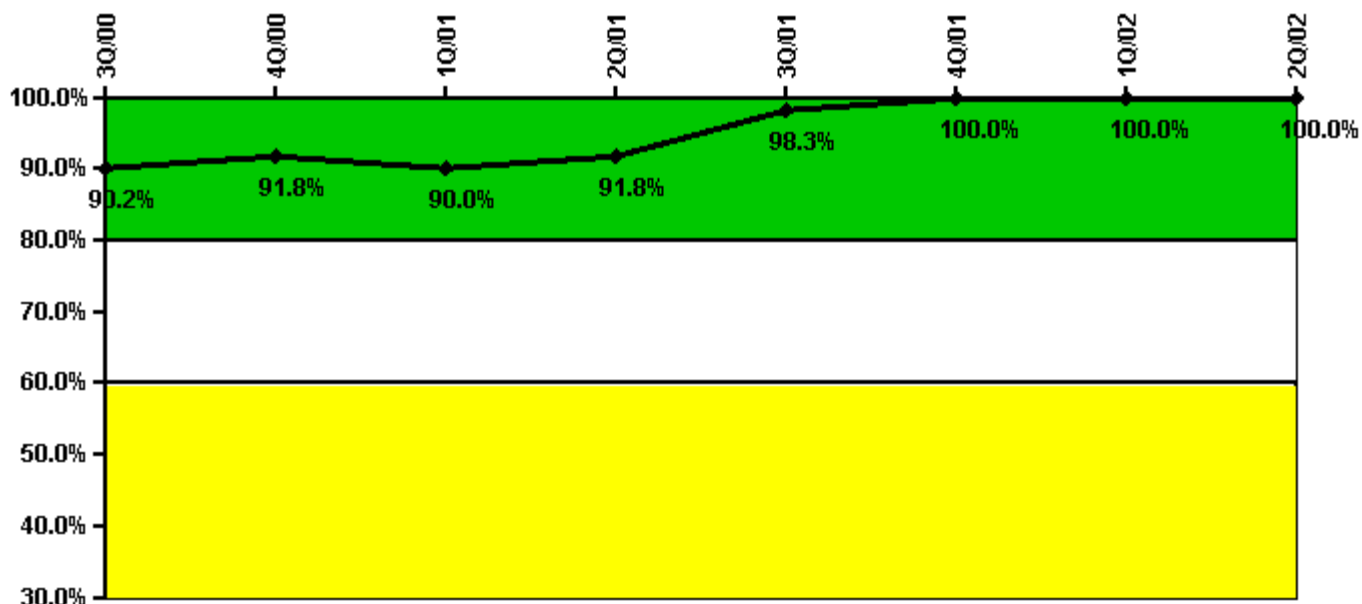
Thresholds: White < 90.0% Yellow < 70.0%

Notes

Drill/Exercise Performance	3Q/00	4Q/00	1Q/01	2Q/01	3Q/01	4Q/01	1Q/02	2Q/02
Successful opportunities	21.0	10.0	36.0	21.0	23.0	9.0	36.0	25.0
Total opportunities	23.0	10.0	40.0	23.0	23.0	10.0	39.0	25.0
Indicator value	92.0%	92.8%	91.7%	90.0%	91.5%	91.0%	91.5%	93.8%

Licensee Comments: none

ERO Drill Participation



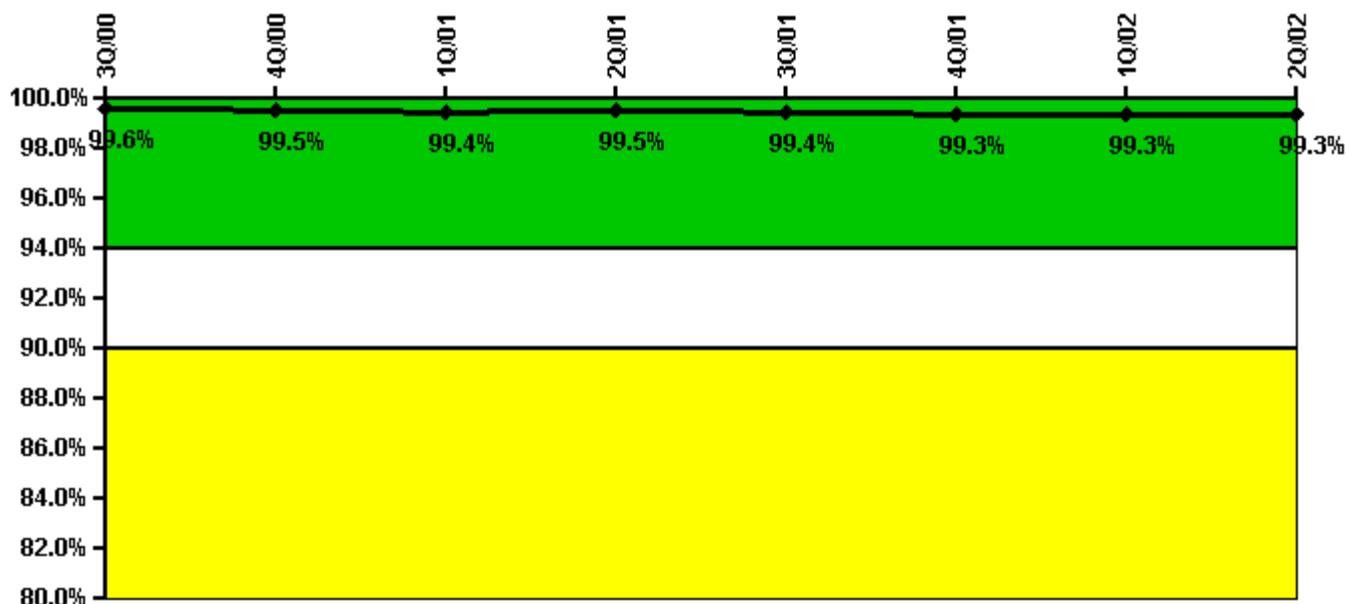
Thresholds: White < 80.0% Yellow < 60.0%

Notes

ERO Drill Participation	3Q/00	4Q/00	1Q/01	2Q/01	3Q/01	4Q/01	1Q/02	2Q/02
Participating Key personnel	55.0	56.0	54.0	56.0	59.0	61.0	63.0	61.0
Total Key personnel	61.0	61.0	60.0	61.0	60.0	61.0	63.0	61.0
Indicator value	90.2%	91.8%	90.0%	91.8%	98.3%	100.0%	100.0%	100.0%

Licensee Comments: none

Alert & Notification System



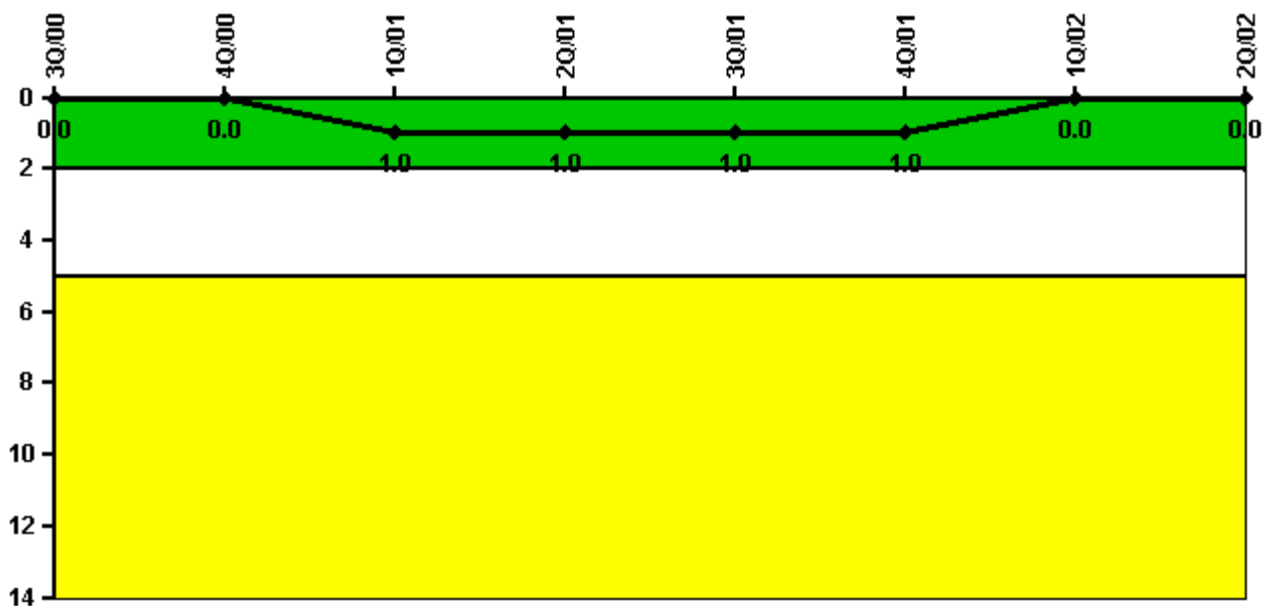
Thresholds: White < 94.0% Yellow < 90.0%

Notes

Alert & Notification System	3Q/00	4Q/00	1Q/01	2Q/01	3Q/01	4Q/01	1Q/02	2Q/02
Successful siren-tests	1175	1044	909	1043	1171	1039	911	1042
Total sirens-tests	1179	1048	917	1048	1179	1048	917	1048
Indicator value	99.6%	99.5%	99.4%	99.5%	99.4%	99.3%	99.3%	99.3%

Licensee Comments: none

Occupational Exposure Control Effectiveness



Thresholds: White > 2.0 Yellow > 5.0

Notes

Occupational Exposure Control Effectiveness	3Q/00	4Q/00	1Q/01	2Q/01	3Q/01	4Q/01	1Q/02	2Q/02
High radiation area occurrences	0	0	1	0	0	0	0	0
Very high radiation area occurrences	0	0	0	0	0	0	0	0
Unintended exposure occurrences	0	0	0	0	0	0	0	0
Indicator value	0	0	1	1	1	1	0	0

Licensee Comments: none

RETS/ODCM Radiological Effluent



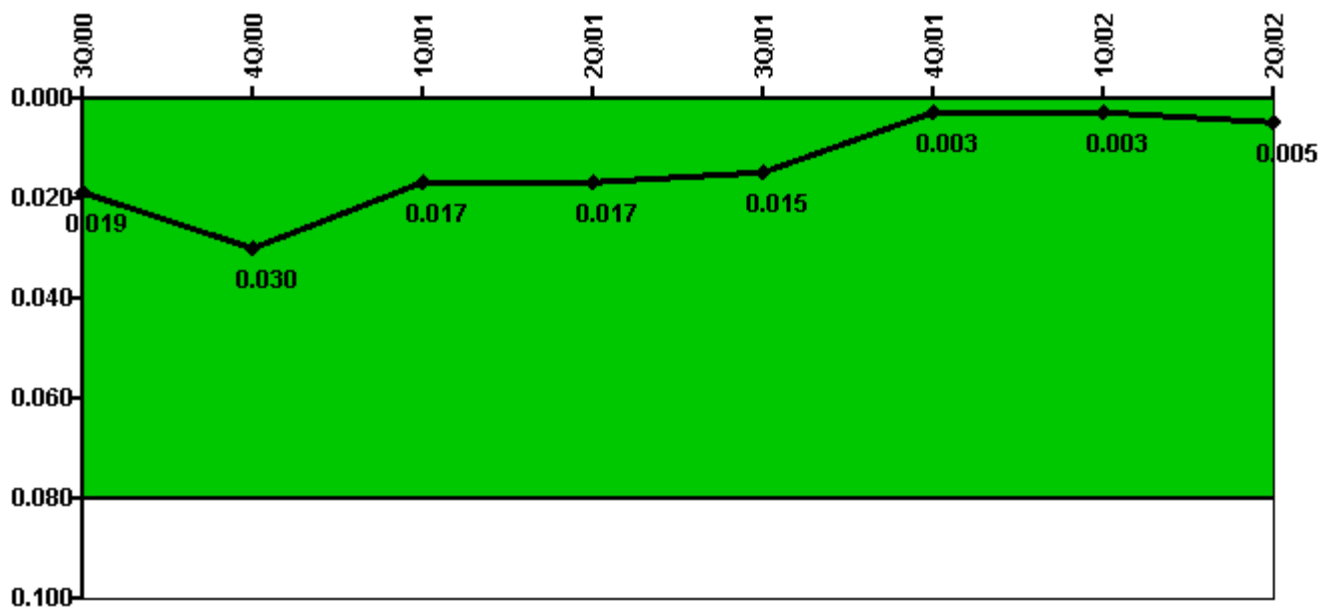
Thresholds: White > 1.0 Yellow > 3.0

Notes

RETS/ODCM Radiological Effluent	3Q/00	4Q/00	1Q/01	2Q/01	3Q/01	4Q/01	1Q/02	2Q/02
RETS/ODCM occurrences	0	0	0	0	0	0	0	0
Indicator value	0	0	0	0	0	0	0	0

Licensee Comments: none

Protected Area Security Performance Index



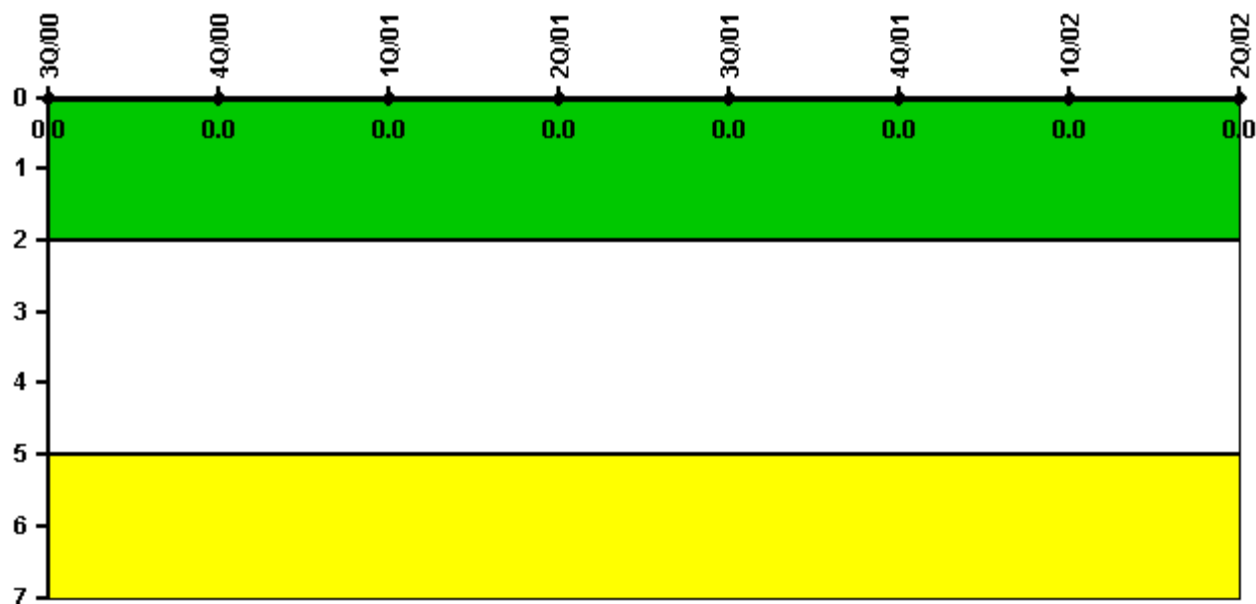
Thresholds: White > 0.080

Notes

Protected Area Security Performance Index	3Q/00	4Q/00	1Q/01	2Q/01	3Q/01	4Q/01	1Q/02	2Q/02
IDS compensatory hours	51.87	31.37	3.87	15.33	24.48	5.90	51.03	79.82
CCTV compensatory hours	14.9	267.1	22.4	2.6	1.8	15.5	0.5	14.2
IDS normalization factor	2.30	2.30	2.30	2.30	2.30	2.30	2.30	2.30
CCTV normalization factor	1.2	1.2	1.2	1.2	1.2	1.2	1.2	1.2
Index Value	0.019	0.030	0.017	0.017	0.015	0.003	0.003	0.005

Licensee Comments: none

Personnel Screening Program



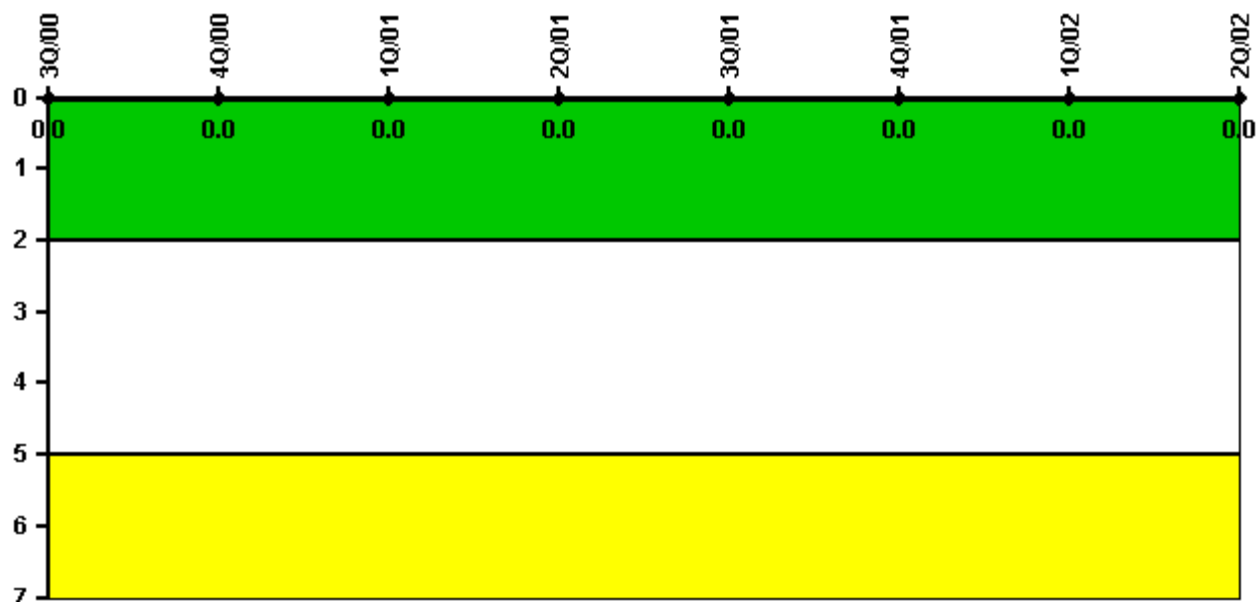
Thresholds: White > 2.0 Yellow > 5.0

Notes

Personnel Screening Program	3Q/00	4Q/00	1Q/01	2Q/01	3Q/01	4Q/01	1Q/02	2Q/02
Program failures	0	0	0	0	0	0	0	0
Indicator value	0	0	0	0	0	0	0	0

Licensee Comments: none

FFD/Personnel Reliability



Thresholds: White > 2.0 Yellow > 5.0

Notes

FFD/Personnel Reliability	3Q/00	4Q/00	1Q/01	2Q/01	3Q/01	4Q/01	1Q/02	2Q/02
Program Failures	0	0	0	0	0	0	0	0
Indicator value	0	0	0	0	0	0	0	0

Licensee Comments: none

▲ [PI Summary](#) | [Inspection Findings Summary](#) | [Reactor Oversight Process](#)

Last Modified: July 31, 2002