

# Braidwood 1

## 1Q/2002 Performance Indicators

Licensee's General Comments: none

### Unplanned Scrams per 7000 Critical Hrs



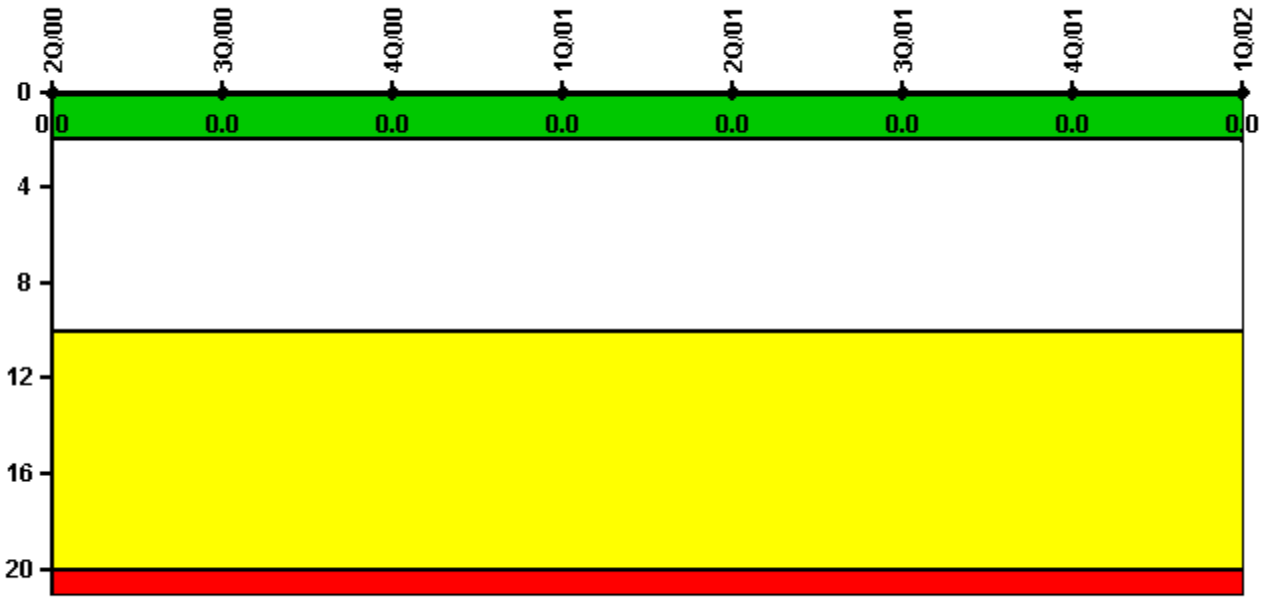
Thresholds: White > 3.0 Yellow > 6.0 Red > 25.0

### Notes

Unplanned Scrams per 7000 Critical Hrs	2Q/00	3Q/00	4Q/00	1Q/01	2Q/01	3Q/01	4Q/01	1Q/02
Unplanned scrams	0	0	0	0	0	0	0	0
Critical hours	2080.3	2208.0	2209.0	2160.0	2183.0	1992.0	1952.7	2160.0
Indicator value	0	0	0	0	0	0	0	0

Licensee Comments: none

### Scrams with Loss of Normal Heat Removal



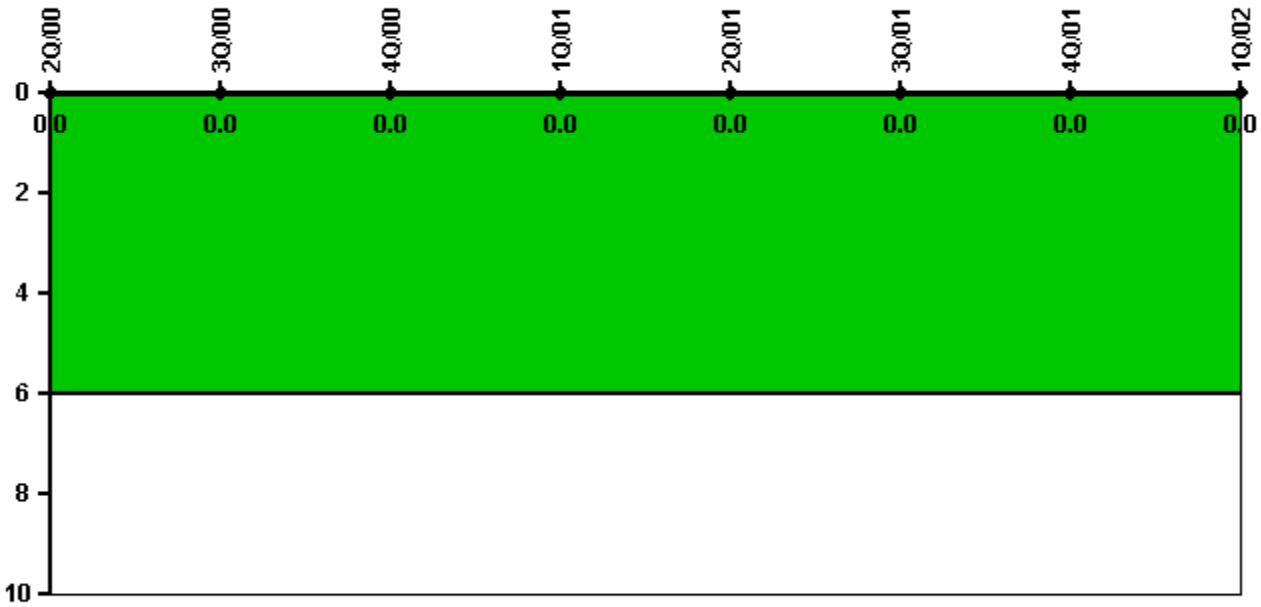
Thresholds: White > 2.0 Yellow > 10.0 Red > 20.0

#### Notes

Scrams with Loss of Normal Heat Removal	2Q/00	3Q/00	4Q/00	1Q/01	2Q/01	3Q/01	4Q/01	1Q/02
Scrams	0	0	0	0	0	0	0	0
Indicator value	0	0	0	0	0	0	0	0

Licensee Comments: none

### Unplanned Power Changes per 7000 Critical Hrs



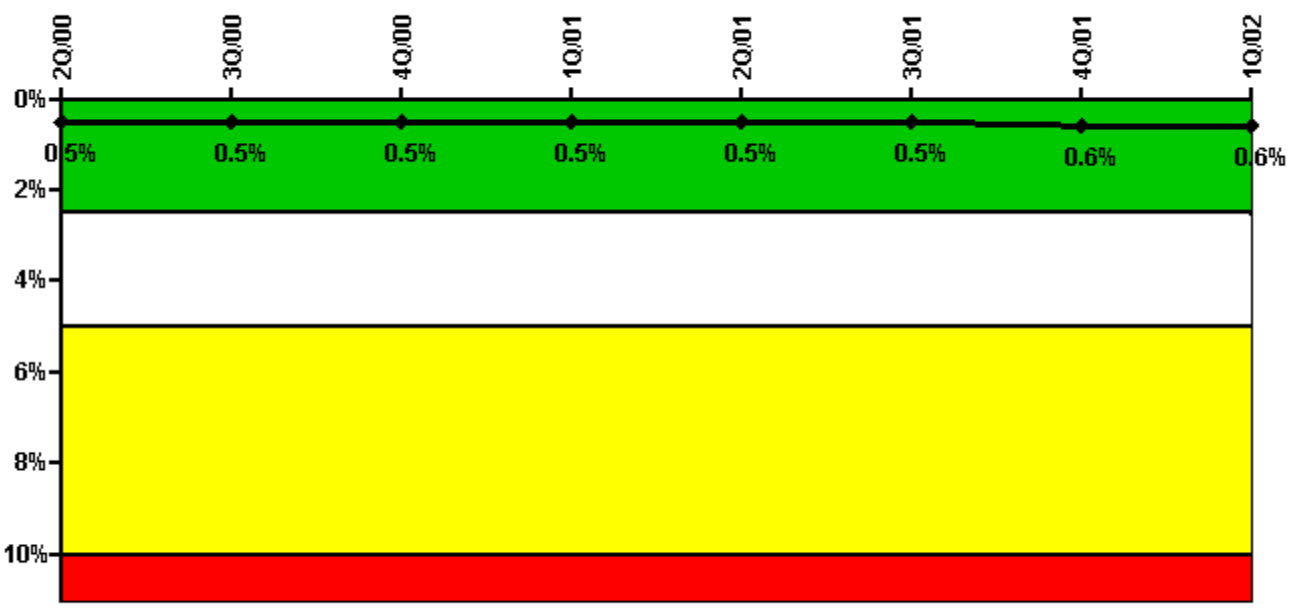
Thresholds: White > 6.0

#### Notes

Unplanned Power Changes per 7000 Critical Hrs	2Q/00	3Q/00	4Q/00	1Q/01	2Q/01	3Q/01	4Q/01	1Q/02
Unplanned power changes	0	0	0	0	0	0	0	0
Critical hours	2080.3	2208.0	2209.0	2160.0	2183.0	1992.0	1952.7	2160.0
Indicator value	0	0	0	0	0	0	0	0

Licensee Comments: none

### Safety System Unavailability, Emergency AC Power



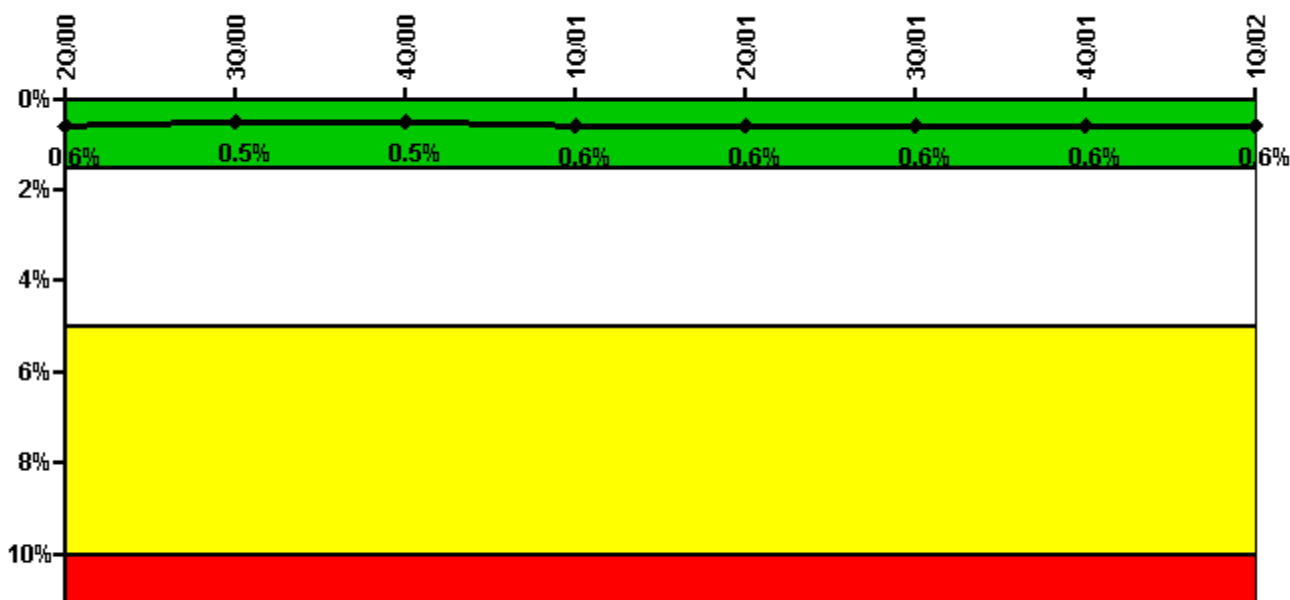
Thresholds: White > 2.5% Yellow > 5.0% Red > 10.0%

#### Notes

Safety System Unavailability, Emergency AC Power	2Q/00	3Q/00	4Q/00	1Q/01	2Q/01	3Q/01	4Q/01	1Q/02
<b>Train 1</b>								
Planned unavailable hours	28.90	0	0	0	6.50	5.12	5.60	1.10
Unplanned unavailable hours	0	0	0	0	0	0	0	0
Fault exposure hours	0	0	0	0	0	0	0	0
Effective Reset hours	0	0	0	0	0	0	0	0
Required hours	2183.00	2208.00	2209.00	2160.00	2183.00	2208.00	2209.00	2160.00
<b>Train 2</b>								
Planned unavailable hours	33.02	10.10	0	0	0	9.10	2.00	1.40
Unplanned unavailable hours	0	0	0	0	0	0	0	0
Fault exposure hours	0	0	0	0	0	0	0	0
Effective Reset hours	0	0	0	0	0	0	0	0
Required hours	2183.00	2208.00	2209.00	2160.00	2183.00	2208.00	2209.00	2160.00
Indicator value	0.5%	0.5%	0.5%	0.5%	0.5%	0.5%	0.6%	0.6%

Licensee Comments: none

### Safety System Unavailability, High Pressure Injection System (HPSI)



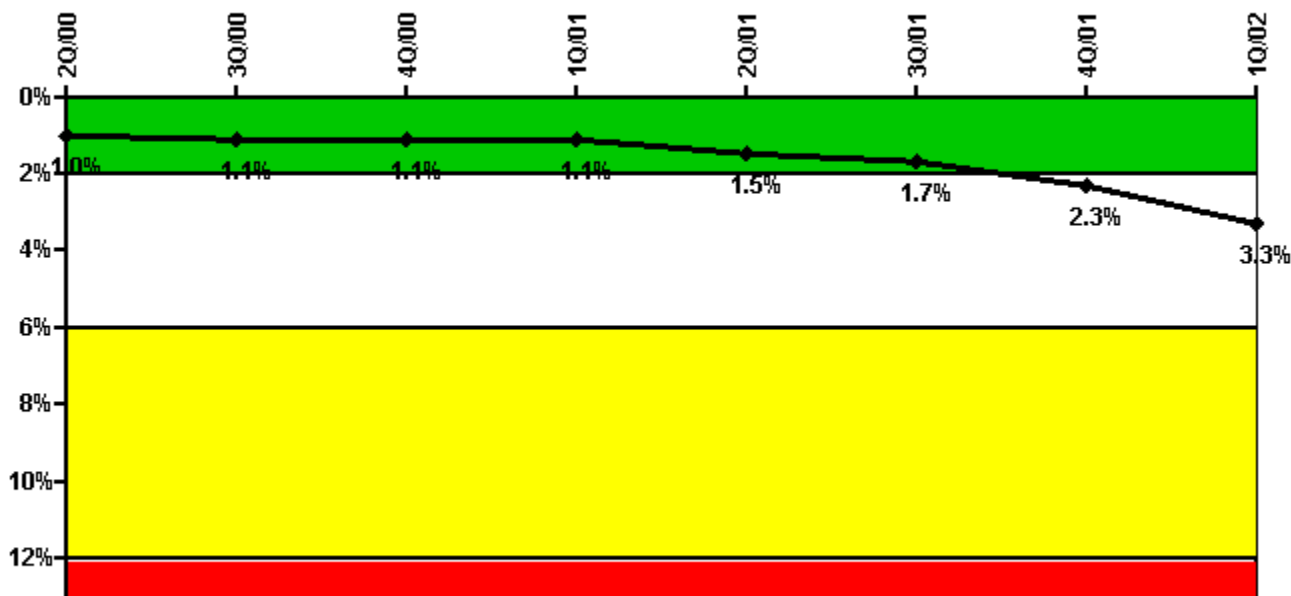
Thresholds: White > 1.5% Yellow > 5.0% Red > 10.0%

#### Notes

Safety System Unavailability, High Pressure Injection System (HPSI)	2Q/00	3Q/00	4Q/00	1Q/01	2Q/01	3Q/01	4Q/01	1Q/02
<b>Train 1</b>								
Planned unavailable hours	2.30	0.10	0.60	0.20	0.30	20.42	2.80	1.20
Unplanned unavailable hours	0	0	0	0	0	0	0	0
Fault exposure hours	0	0	0	0	0	0	0	0
Effective Reset hours	0	0	0	0	0	0	0	0
Required hours	2080.30	2208.00	2209.00	2160.00	2183.00	1992.03	1952.70	2160.00
<b>Train 2</b>								
Planned unavailable hours	0.30	0	0.10	38.70	44.40	1.80	2.50	1.40
Unplanned unavailable hours	0	0	0	0	0	35.20	0	0
Fault exposure hours	0	0	0	0	0	0	0	0
Effective Reset hours	0	0	0	0	0	0	0	0
Required hours	2080.30	2208.00	2209.00	2160.00	2183.00	1992.03	1952.70	2160.00
<b>Train 3</b>								
Planned unavailable hours	0.70	0.30	0.40	21.60	1.00	40.80	2.50	1.10
Unplanned unavailable hours	0	0	0	0	0	0	0	0
Fault exposure hours	0	0	0	0	0	0	0	0
Effective Reset hours	0	0	0	0	0	0	0	0
Required hours	2080.30	2208.00	2209.00	2160.00	2183.00	1992.03	1952.70	2160.00
<b>Train 4</b>								
Planned unavailable hours	0.78	0.40	0.70	0.90	0.90	57.20	2.20	1.50
Unplanned unavailable hours	0.50	0	0	0	0	0	0	0
Fault exposure hours	0	0	0	0	0	0	0	0
Effective Reset hours	0	0	0	0	0	0	0	0
Required hours	2080.30	2208.00	2209.00	2160.00	2183.00	1992.03	1952.70	2160.00
Indicator value	0.6%	0.5%	0.5%	0.6%	0.6%	0.6%	0.6%	0.6%

Licensee Comments: none

### Safety System Unavailability, Heat Removal System (AFW)



Thresholds: White > 2.0% Yellow > 6.0% Red > 12.0%

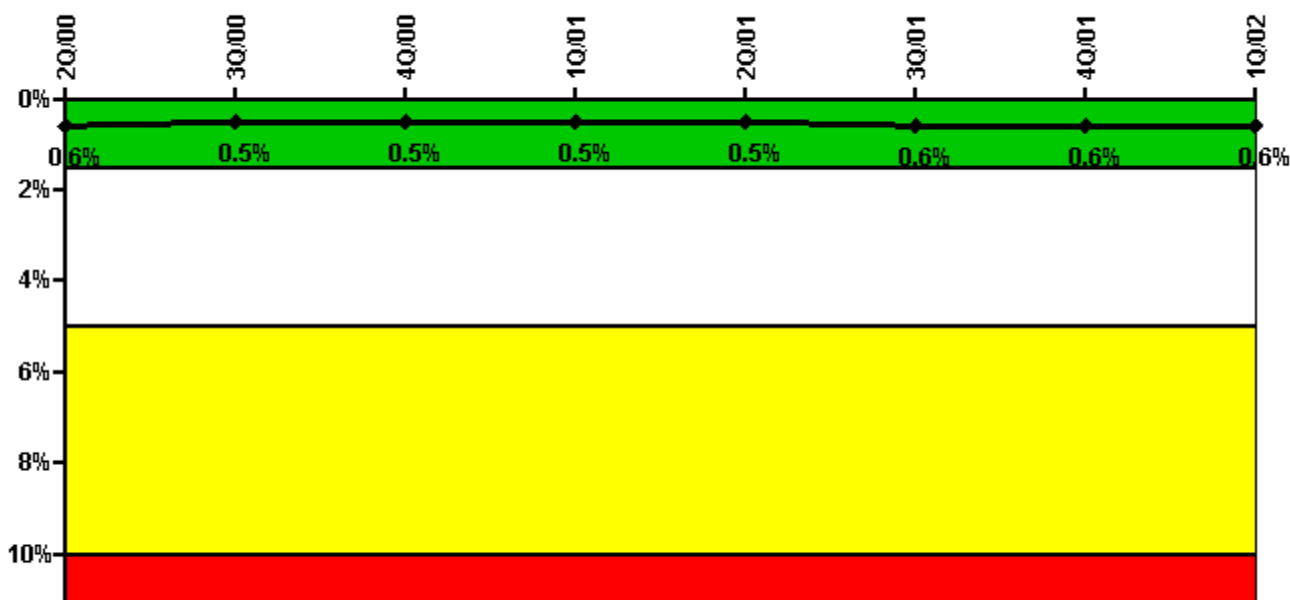
#### Notes

Safety System Unavailability, Heat Removal System (AFW)	2Q/00	3Q/00	4Q/00	1Q/01	2Q/01	3Q/01	4Q/01	1Q/02
<b>Train 1</b>								
Planned unavailable hours	16.42	4.00	3.90	5.10	37.30	11.21	5.90	6.30
Unplanned unavailable hours	0	0	0	0	0	0	0	0
Fault exposure hours	0	0	0	0	0	0	0	0
Effective Reset hours	0	0	0	0	0	0	0	0
Required hours	2080.30	2208.00	2209.00	2160.00	2183.00	1992.03	1952.70	2160.00
<b>Train 2</b>								
Planned unavailable hours	4.03	8.30	12.40	4.20	11.20	57.10	8.50	11.50
Unplanned unavailable hours	0	0	0	0	0	0	0	68.60
Fault exposure hours	0	0	0	0	155.90	0	335.80	416.70
Effective Reset hours	0	0	0	0	0	0	0	0
Required hours	2080.30	2208.00	2209.00	2160.00	2183.00	1992.03	1952.70	2160.00
Indicator value	1.0%	1.1%	1.1%	1.1%	1.5%	1.7%	2.3%	3.3%

Licensee Comments:

1Q/02: The 1B Auxiliary Feedwater pump failed to start on 2/25/02 due to the failure of the fuel solenoid. The system experienced 416.7 hours of fault exposure and 68.6 hours of unplanned unavailability.

### Safety System Unavailability, Residual Heat Removal System



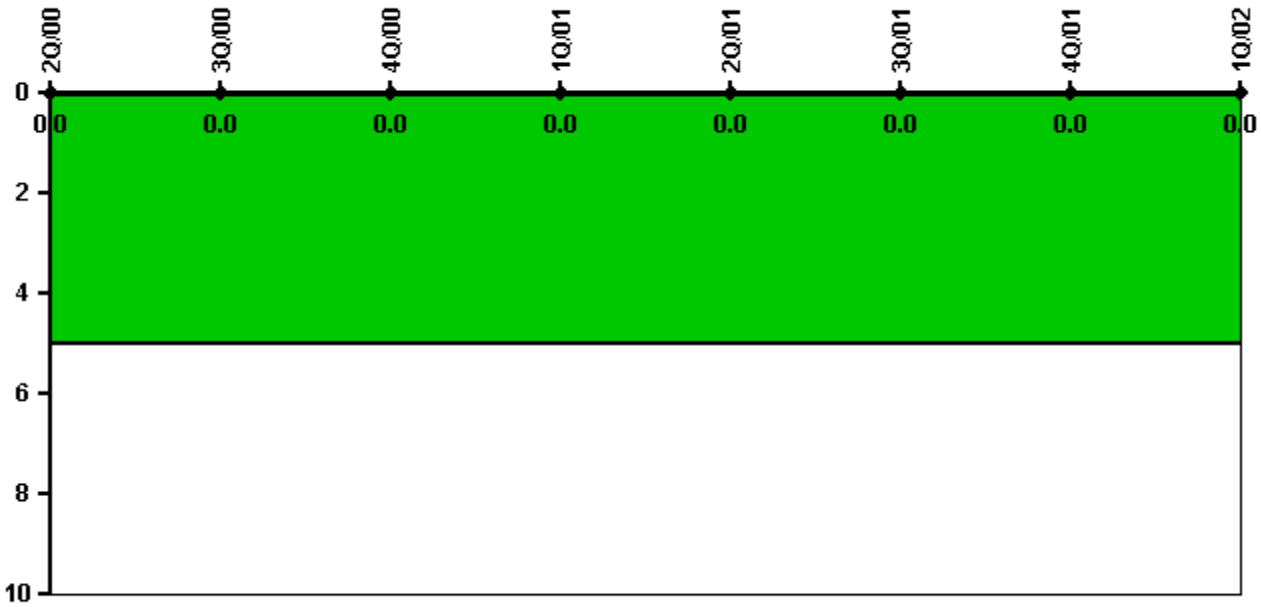
Thresholds: White > 1.5% Yellow > 5.0% Red > 10.0%

#### Notes

Safety System Unavailability, Residual Heat Removal System	2Q/00	3Q/00	4Q/00	1Q/01	2Q/01	3Q/01	4Q/01	1Q/02
<b>Train 1</b>								
Planned unavailable hours	2.68	0.60	1.20	0.30	0.90	65.30	3.10	2.20
Unplanned unavailable hours	0	0	0	0	0	0	0	0
Fault exposure hours	0	0	0	0	0	0	0	0
Effective Reset hours	0	0	0	0	0	0	0	0
Required hours	2183.00	2208.00	2209.00	2160.00	2183.00	2208.00	2209.00	2160.00
<b>Train 2</b>								
Planned unavailable hours	0.77	4.80	0.30	0.30	0.70	73.50	2.10	1.80
Unplanned unavailable hours	0	0	0	0	0	0	0	0
Fault exposure hours	0	0	0	0	0	0	0	0
Effective Reset hours	0	0	0	0	0	0	0	0
Required hours	2183.00	2208.00	2209.00	2160.00	2183.00	2208.00	2209.00	2160.00
Indicator value	0.6%	0.5%	0.5%	0.5%	0.5%	0.6%	0.6%	0.6%

Licensee Comments: none

### Safety System Functional Failures (PWR)



Thresholds: White > 5.0

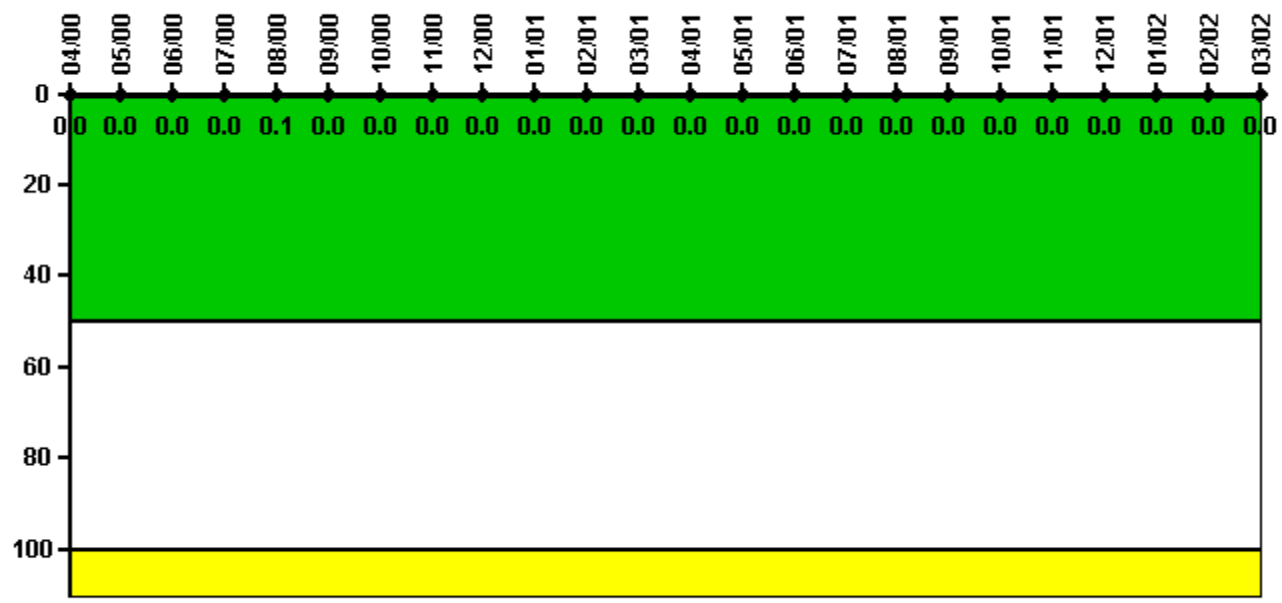
#### Notes

Safety System Functional Failures (PWR)	2Q/00	3Q/00	4Q/00	1Q/01	2Q/01	3Q/01	4Q/01	1Q/02
Safety System Functional Failures	0	0	0	0	0	0	0	0
Indicator value	0	0	0	0	0	0	0	0

Licensee Comments: none



### Reactor Coolant System Activity



Thresholds: White > 50.0 Yellow > 100.0

#### Notes

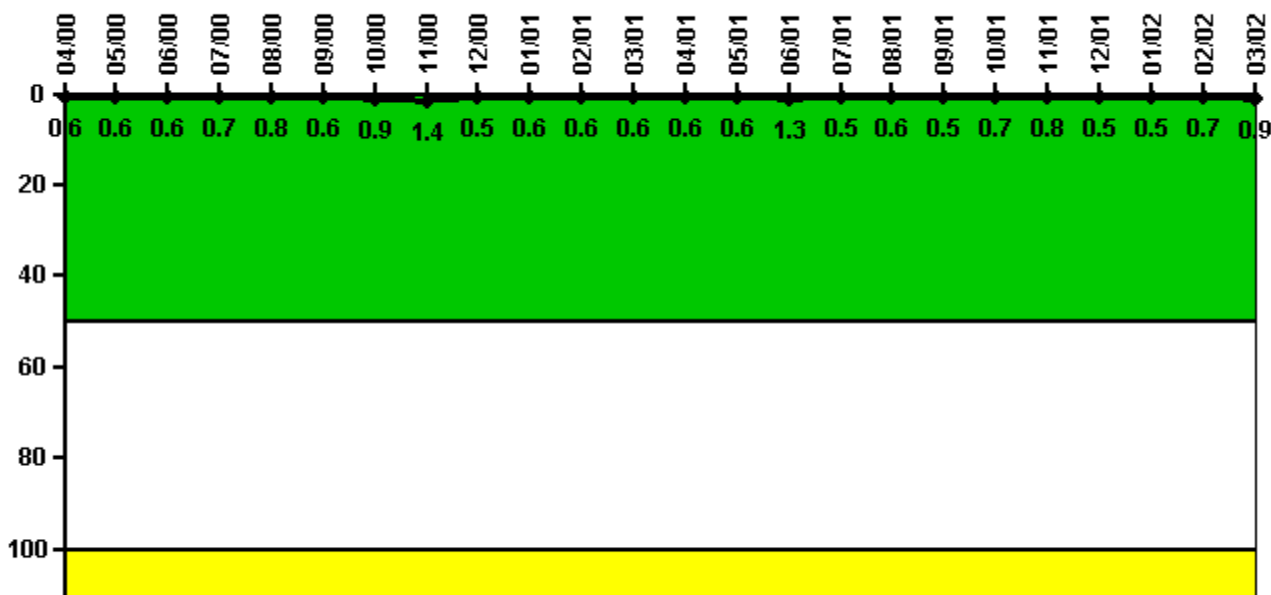
Reactor Coolant System Activity	4/00	5/00	6/00	7/00	8/00	9/00	10/00	11/00	12/00	1/01	2/01	3/01
Maximum activity	0.000198	0.000218	0.000249	0.000438	0.000544	0.000281	0.000285	0.000323	0.000334	0.000336	0.000327	0.000342
Technical specification limit	1.0	1.0	1.0	1.0	1.0	1.0	1.0	1.0	1.0	1.0	1.0	1.0
Indicator value	0	0	0	0	0.1	0	0	0	0	0	0	0

Reactor Coolant System Activity	4/01	5/01	6/01	7/01	8/01	9/01	10/01	11/01	12/01	1/02	2/02	3/02
Maximum activity	0.000358	0.000364	0.000373	0.000415	0.000392	0.000386	0.000193	0.000193	0.000196	0.000205	0.000226	0.000237
Technical specification limit	1.0	1.0	1.0	1.0	1.0	1.0	1.0	1.0	1.0	1.0	1.0	1.0
Indicator value	0	0	0	0	0	0	0	0	0	0	0	0

Licensee Comments: none

### Reactor Coolant System Leakage



Thresholds: White > 50.0 Yellow > 100.0

#### Notes

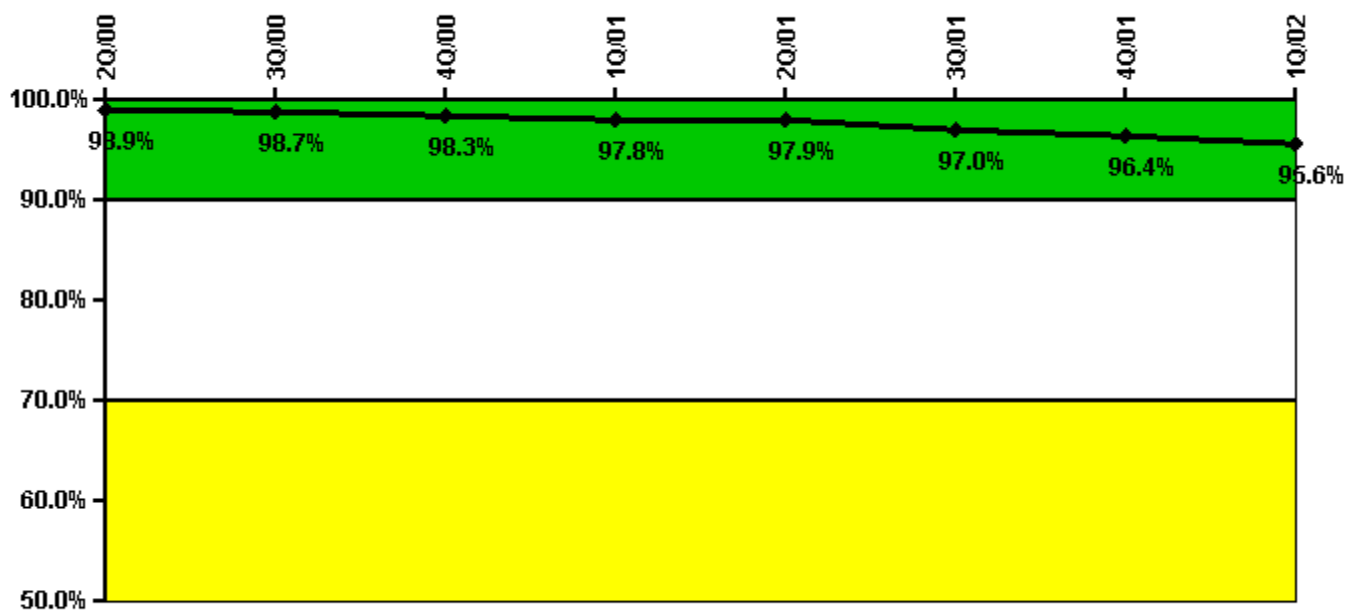
Reactor Coolant System Leakage	4/00	5/00	6/00	7/00	8/00	9/00	10/00	11/00	12/00	1/01	2/01	3/01
Maximum leakage	0.063	0.056	0.057	0.074	0.083	0.064	0.086	0.136	0.054	0.065	0.059	0.065
Technical specification limit	10.0	10.0	10.0	10.0	10.0	10.0	10.0	10.0	10.0	10.0	10.0	10.0
Indicator value	0.6	0.6	0.6	0.7	0.8	0.6	0.9	1.4	0.5	0.6	0.6	0.6

Reactor Coolant System Leakage	4/01	5/01	6/01	7/01	8/01	9/01	10/01	11/01	12/01	1/02	2/02	3/02
Maximum leakage	0.065	0.055	0.125	0.053	0.057	0.051	0.072	0.079	0.051	0.052	0.071	0.085
Technical specification limit	10.0	10.0	10.0	10.0	10.0	10.0	10.0	10.0	10.0	10.0	10.0	10.0
Indicator value	0.6	0.6	1.3	0.5	0.6	0.5	0.7	0.8	0.5	0.5	0.7	0.9

Licensee Comments: none

### Drill/Exercise Performance



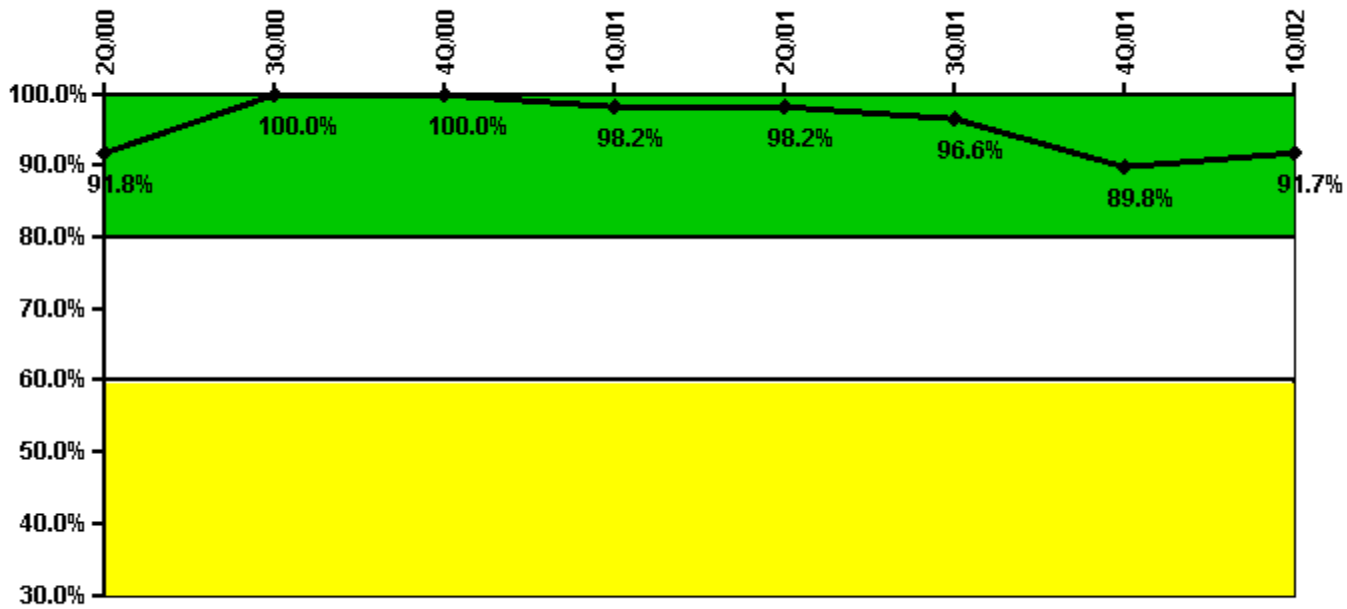
Thresholds: White < 90.0% Yellow < 70.0%

#### Notes

Drill/Exercise Performance	2Q/00	3Q/00	4Q/00	1Q/01	2Q/01	3Q/01	4Q/01	1Q/02
Successful opportunities	8.0	45.0	13.0	34.0	21.0	68.0	46.0	28.0
Total opportunities	8.0	46.0	14.0	35.0	21.0	71.0	49.0	31.0
Indicator value	98.9%	98.7%	98.3%	97.8%	97.9%	97.0%	96.4%	95.6%

Licensee Comments: none

### ERO Drill Participation



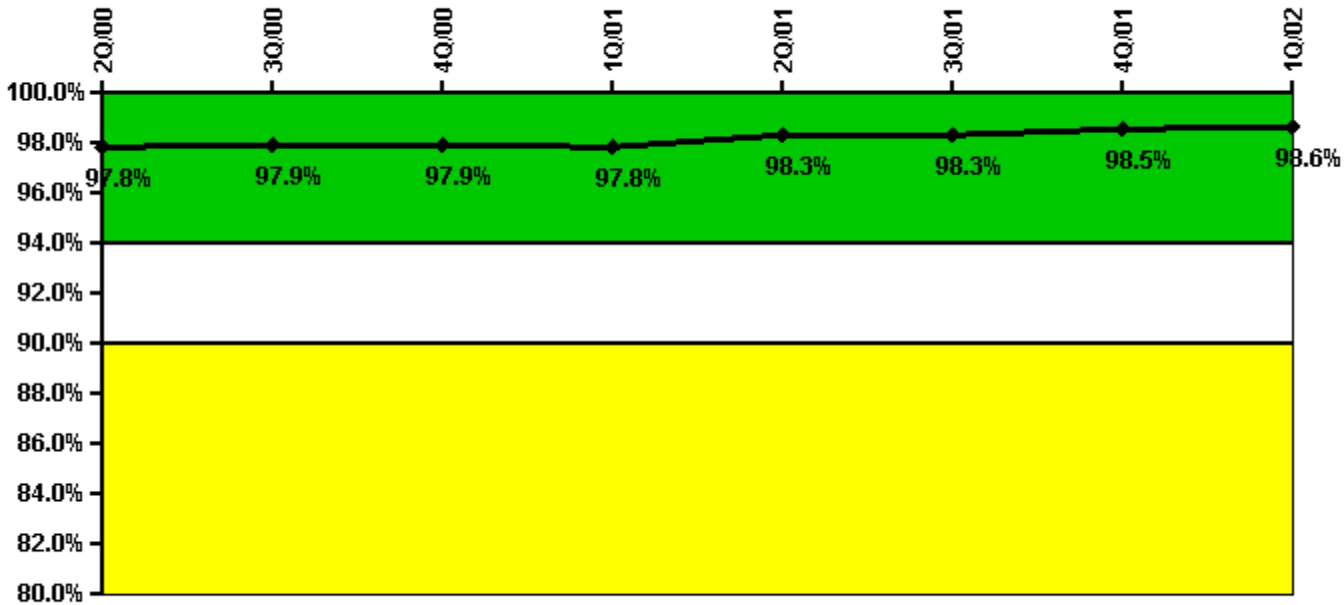
Thresholds: White < 80.0% Yellow < 60.0%

#### Notes

ERO Drill Participation	2Q/00	3Q/00	4Q/00	1Q/01	2Q/01	3Q/01	4Q/01	1Q/02
Participating Key personnel	56.0	61.0	60.0	56.0	56.0	56.0	44.0	44.0
Total Key personnel	61.0	61.0	60.0	57.0	57.0	58.0	49.0	48.0
Indicator value	91.8%	100.0%	100.0%	98.2%	98.2%	96.6%	89.8%	91.7%

Licensee Comments: none

### Alert & Notification System



Thresholds: White < 94.0% Yellow < 90.0%

#### Notes

Alert & Notification System	2Q/00	3Q/00	4Q/00	1Q/01	2Q/01	3Q/01	4Q/01	1Q/02
Successful siren-tests	4383	4384	4380	4699	4687	4594	4489	4423
Total sirens-tests	4544	4473	4473	4757	4757	4686	4544	4473
Indicator value	97.8%	97.9%	97.9%	97.8%	98.3%	98.3%	98.5%	98.6%

#### Licensee Comments:

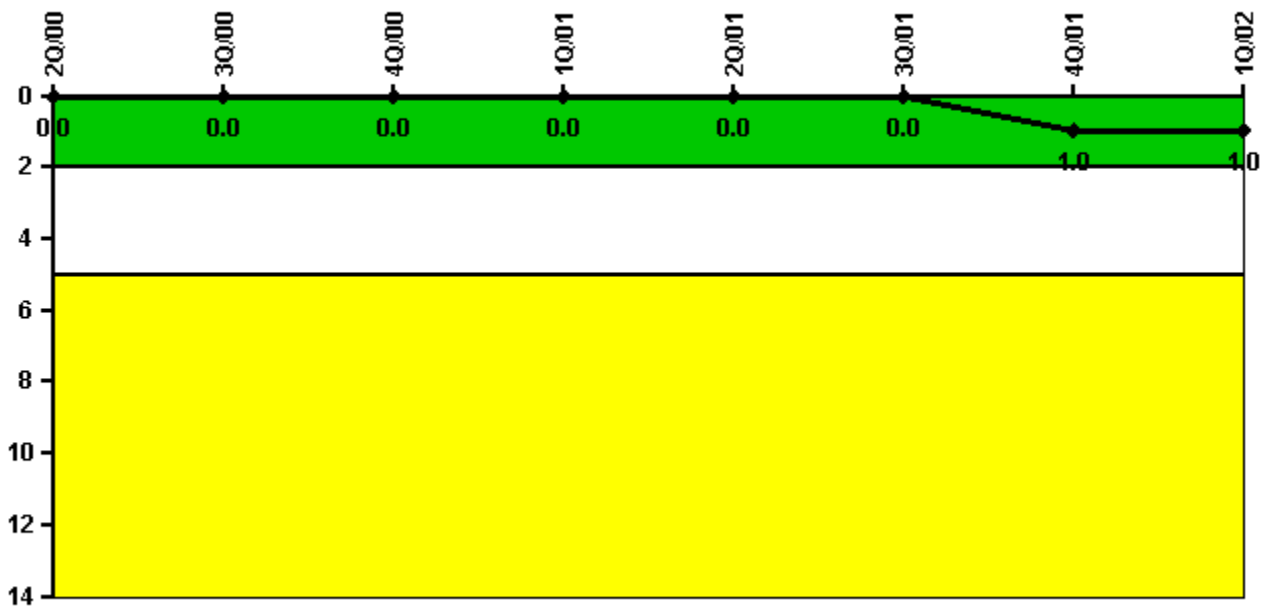
4Q/01: A revision has been made to previously submitted data for the Alert and Notification System (ANS) Reliability indicator. It was determined there was one day each month where both a full test and a silent test of ANS sirens was performed; however, only one of these tests had been reported. Ten months of data in 2001 were affected and have been revised (1-01, 2-01, 3-01, 4-01, 5-01, 6-01, 7-01, 8-01, 9-01, and 11-01). The October data was not revised because the full siren test was not performed in October due to concerns arising from the events of September 11, 2001. The change to the data does not affect the color of the indicator.

3Q/01: A revision has been made to previously submitted data for the Alert and Notification System (ANS) Reliability indicator. It was determined there was one day each month where both a full test and a silent test of ANS sirens was performed; however, only one of these tests had been reported. Ten months of data in 2001 were affected and have been revised (1-01, 2-01, 3-01, 4-01, 5-01, 6-01, 7-01, 8-01, 9-01, and 11-01). The October data was not revised because the full siren test was not performed in October due to concerns arising from the events of September 11, 2001. The change to the data does not affect the color of the indicator.

2Q/01: A revision has been made to previously submitted data for the Alert and Notification System (ANS) Reliability indicator. It was determined there was one day each month where both a full test and a silent test of ANS sirens was performed; however, only one of these tests had been reported. Ten months of data in 2001 were affected and have been revised (1-01, 2-01, 3-01, 4-01, 5-01, 6-01, 7-01, 8-01, 9-01, and 11-01). The October data was not revised because the full siren test was not performed in October due to concerns arising from the events of September 11, 2001. The change to the data does not affect the color of the indicator.

1Q/01: A revision has been made to previously submitted data for the Alert and Notification System (ANS) Reliability indicator. It was determined there was one day each month where both a full test and a silent test of ANS sirens was performed; however, only one of these tests had been reported. Ten months of data in 2001 were affected and have been revised (1-01, 2-01, 3-01, 4-01, 5-01, 6-01, 7-01, 8-01, 9-01, and 11-01). The October data was not revised because the full siren test was not performed in October due to concerns arising from the events of September 11, 2001. The change to the data does not affect the color of the indicator.

### Occupational Exposure Control Effectiveness



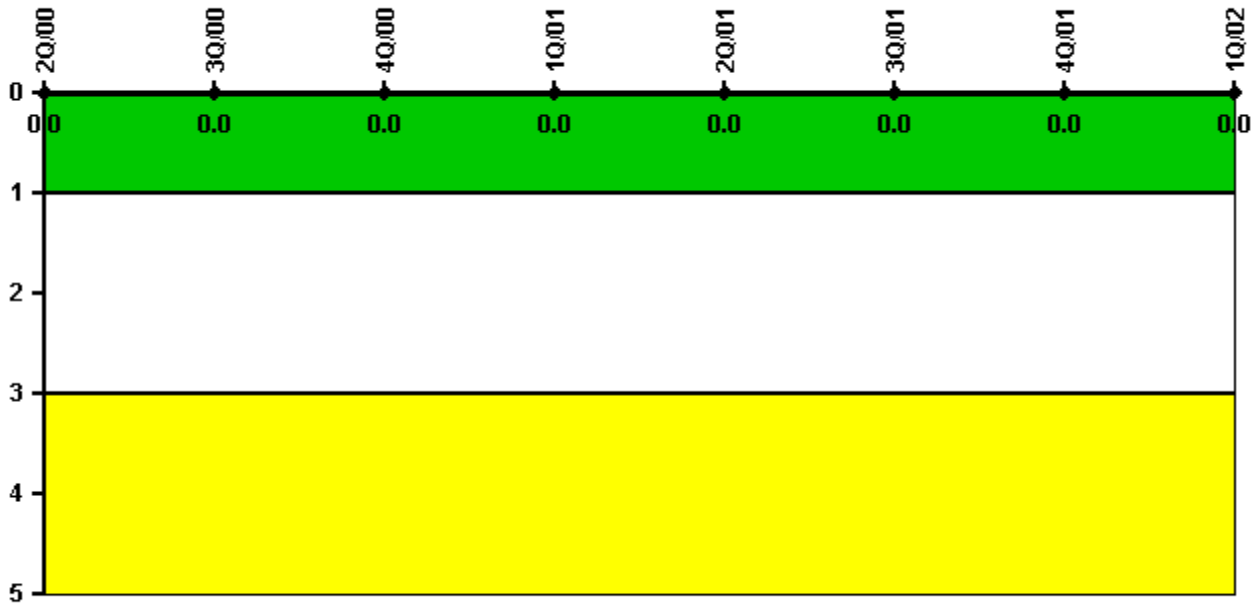
Thresholds: White > 2.0 Yellow > 5.0

#### Notes

Occupational Exposure Control Effectiveness	2Q/00	3Q/00	4Q/00	1Q/01	2Q/01	3Q/01	4Q/01	1Q/02
High radiation area occurrences	0	0	0	0	0	0	1	0
Very high radiation area occurrences	0	0	0	0	0	0	0	0
Unintended exposure occurrences	0	0	0	0	0	0	0	0
Indicator value	0	0	0	0	0	0	1	1

Licensee Comments: none

### RETS/ODCM Radiological Effluent



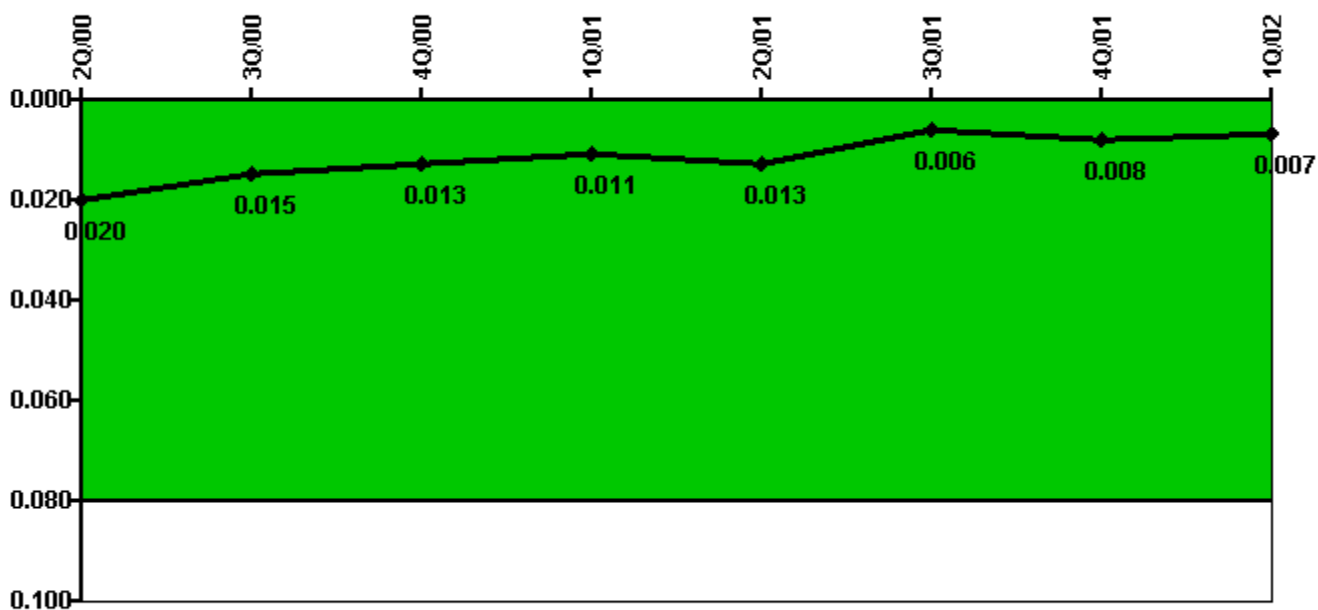
Thresholds: White > 1.0 Yellow > 3.0

#### Notes

RETS/ODCM Radiological Effluent	2Q/00	3Q/00	4Q/00	1Q/01	2Q/01	3Q/01	4Q/01	1Q/02
RETS/ODCM occurrences	0	0	0	0	0	0	0	0
Indicator value	0	0	0	0	0	0	0	0

Licensee Comments: none

### Protected Area Security Performance Index



Thresholds: White > 0.080

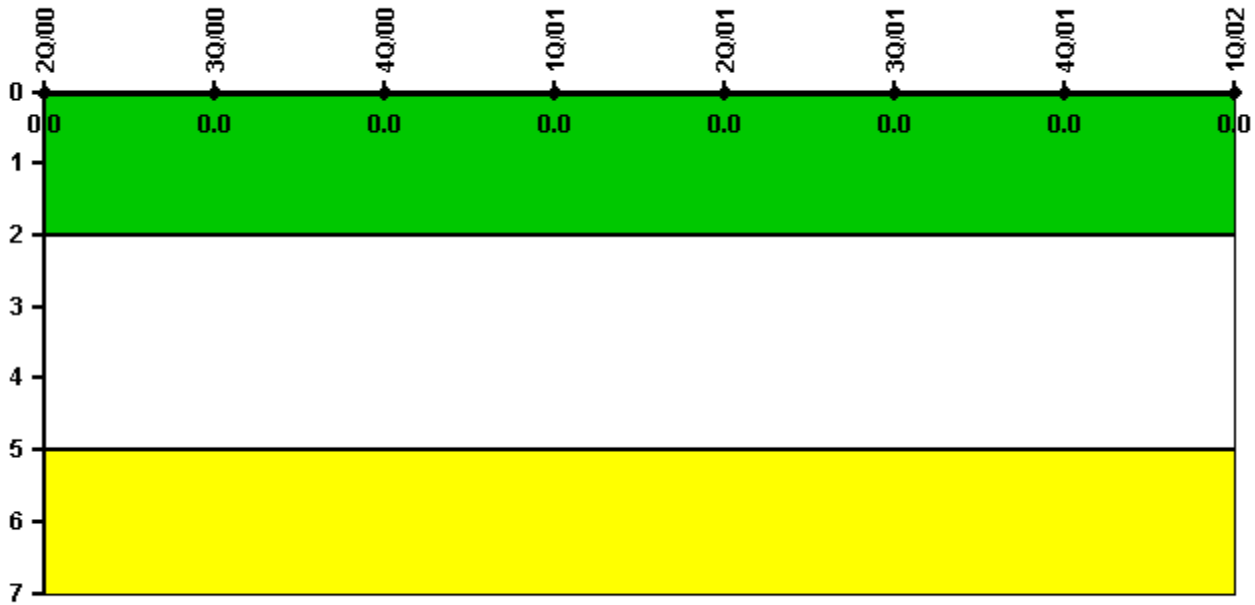
#### Notes

Protected Area Security Performance Index	2Q/00	3Q/00	4Q/00	1Q/01	2Q/01	3Q/01	4Q/01	1Q/02
IDS compensatory hours	33.40	246.82	14.00	22.85	66.24	40.27	57.40	5.80
CCTV compensatory hours	0	0.9	1.1	5.3	0	3.2	10.4	2.0
IDS normalization factor	1.65	1.65	1.65	1.65	1.65	1.65	1.65	1.65
CCTV normalization factor	1.0	1.0	1.0	1.0	1.0	1.0	1.0	1.0
<b>Index Value</b>	<b>0.020</b>	<b>0.015</b>	<b>0.013</b>	<b>0.011</b>	<b>0.013</b>	<b>0.006</b>	<b>0.008</b>	<b>0.007</b>

Licensee Comments: none



### Personnel Screening Program



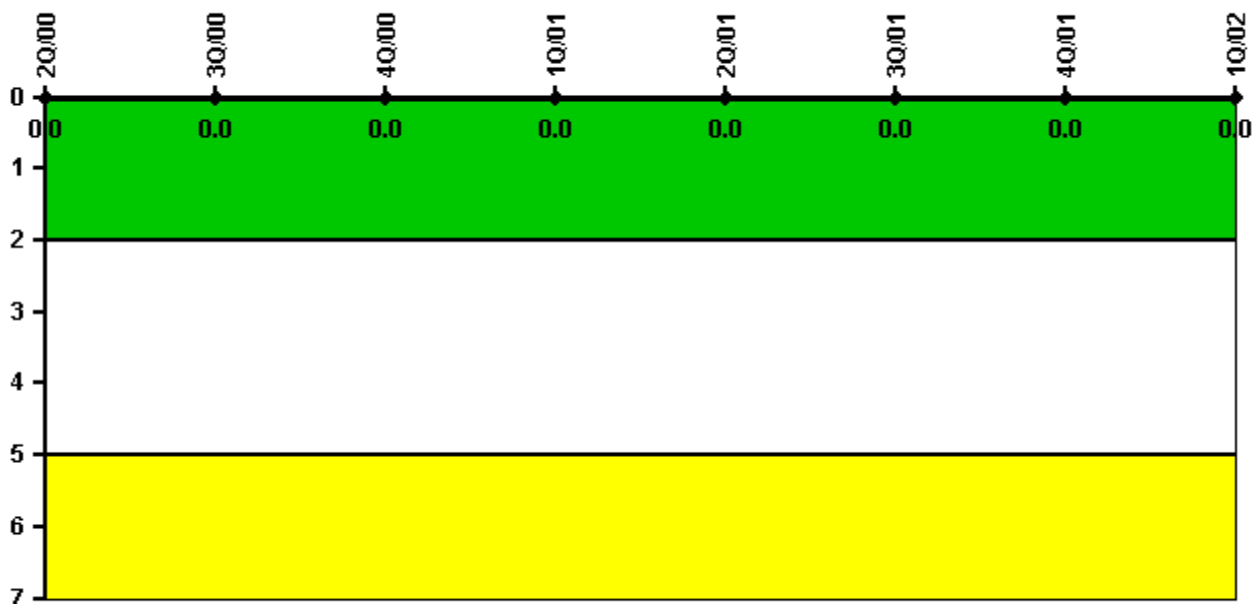
Thresholds: White > 2.0 Yellow > 5.0

#### Notes

Personnel Screening Program	2Q/00	3Q/00	4Q/00	1Q/01	2Q/01	3Q/01	4Q/01	1Q/02
Program failures	0	0	0	0	0	0	0	0
Indicator value	0	0	0	0	0	0	0	0

Licensee Comments: none

### FFD/Personnel Reliability



Thresholds: White > 2.0 Yellow > 5.0

#### Notes

FFD/Personnel Reliability	2Q/00	3Q/00	4Q/00	1Q/01	2Q/01	3Q/01	4Q/01	1Q/02
Program Failures	0	0	0	0	0	0	0	0
Indicator value	0	0	0	0	0	0	0	0

Licensee Comments: none

▲ [PI Summary](#) | [Inspection Findings Summary](#) | [Reactor Oversight Process](#)

Last Modified: May 1, 2002