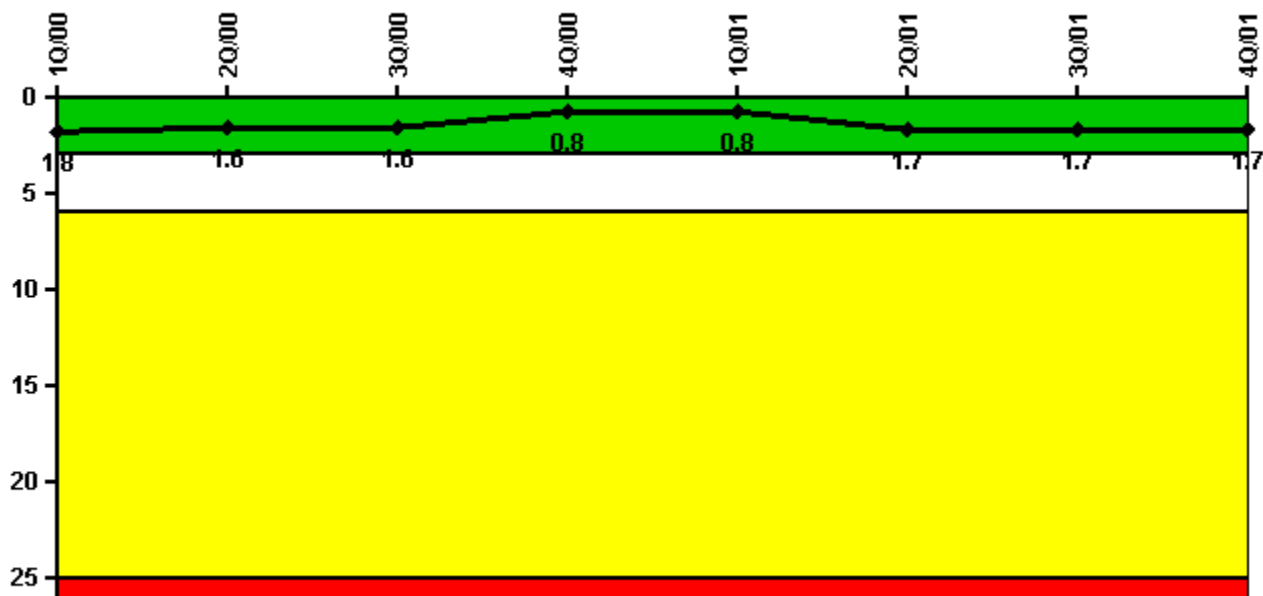


### Limerick 2

#### 4Q/2001 Performance Indicators

Licensee's General Comments: none

#### Unplanned Scrams per 7000 Critical Hrs



Thresholds: White > 3.0 Yellow > 6.0 Red > 25.0

#### Notes

Unplanned Scrams per 7000 Critical Hrs	1Q/00	2Q/00	3Q/00	4Q/00	1Q/01	2Q/01	3Q/01	4Q/01
Unplanned scrams	1.0	0	0	0	1.0	1.0	0	0
Critical hours	2120.6	2183.0	2208.0	2209.0	2101.9	1781.4	2208.0	2209.0
<b>Indicator value</b>	<b>1.8</b>	<b>1.6</b>	<b>1.6</b>	<b>0.8</b>	<b>0.8</b>	<b>1.7</b>	<b>1.7</b>	<b>1.7</b>

Licensee Comments: none

### Scrams with Loss of Normal Heat Removal



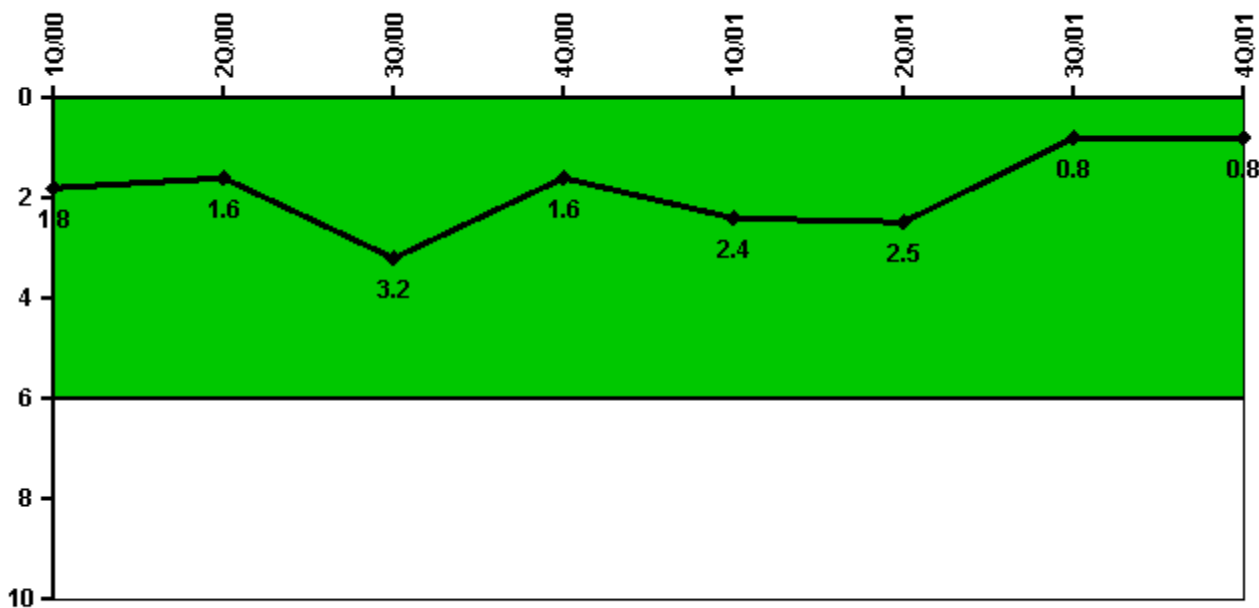
Thresholds: White > 2.0 Yellow > 10.0 Red > 20.0

### Notes

Scrams with Loss of Normal Heat Removal	1Q/00	2Q/00	3Q/00	4Q/00	1Q/01	2Q/01	3Q/01	4Q/01
Scrams	0	0	0	0	0	0	0	0
Indicator value	0	0	0	0	0	0	0	0

Licensee Comments: none

### Unplanned Power Changes per 7000 Critical Hrs



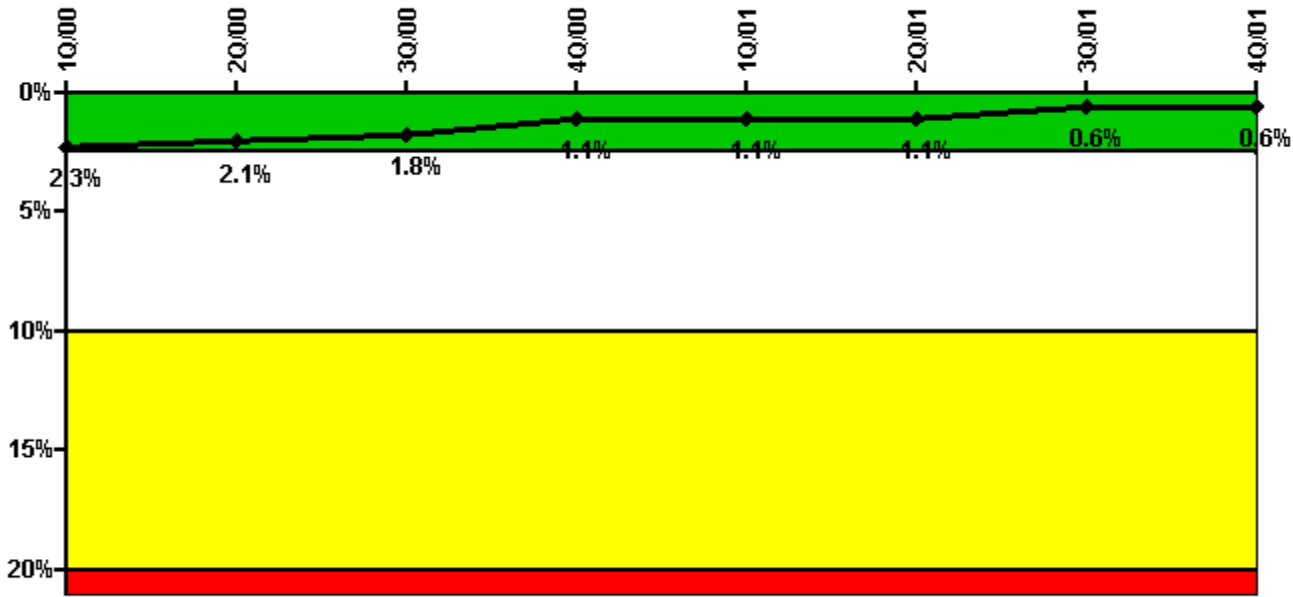
Thresholds: White > 6.0

#### Notes

Unplanned Power Changes per 7000 Critical Hrs	1Q/00	2Q/00	3Q/00	4Q/00	1Q/01	2Q/01	3Q/01	4Q/01
Unplanned power changes	0	0	2.0	0	1.0	0	0	0
Critical hours	2120.6	2183.0	2208.0	2209.0	2101.9	1781.4	2208.0	2209.0
Indicator value	1.8	1.6	3.2	1.6	2.4	2.5	0.8	0.8

Licensee Comments: none

### Safety System Unavailability, Emergency AC Power, >2EDG



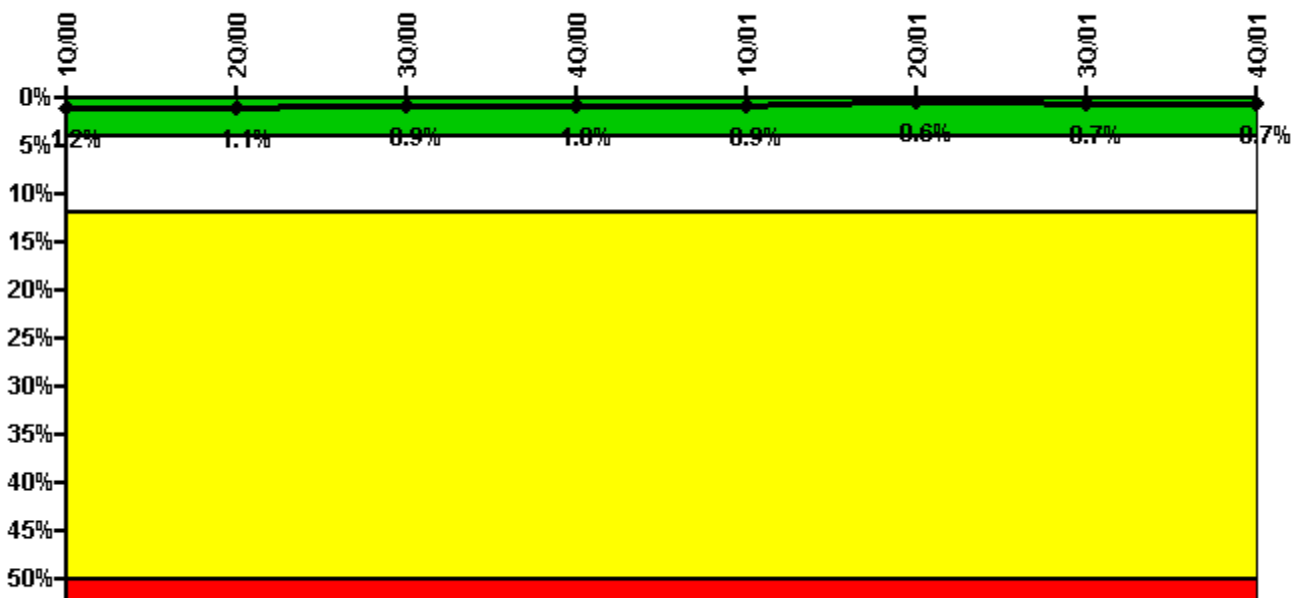
Thresholds: White > 2.5% Yellow > 10.0% Red > 20.0%

#### Notes

Safety System Unavailability, Emergency AC Power, >2EDG	1Q/00	2Q/00	3Q/00	4Q/00	1Q/01	2Q/01	3Q/01	4Q/01
<b>Train 1</b>								
Planned unavailable hours	3.27	0	0	0.25	0	3.00	2.12	1.35
Unplanned unavailable hours	0	0	0	2.80	0	0	0	0
Fault exposure hours	0	0	0	0	0	0	0	0
Effective Reset hours	0	0	0	0	0	0	0	0
Required hours	2184.00	2183.00	2208.00	2209.00	2140.66	2037.07	2208.00	2209.00
<b>Train 2</b>								
Planned unavailable hours	0	0	0	9.98	0	0	0	0
Unplanned unavailable hours	18.51	0	0	0	0	0	0	0
Fault exposure hours	0	0	0	0	0	0	0	0
Effective Reset hours	0	0	0	0	0	0	0	0
Required hours	2184.00	2183.00	2208.00	2209.00	2140.66	2037.07	2208.00	2209.00
<b>Train 3</b>								
Planned unavailable hours	0	0	7.00	0.43	0	0.66	0	0.74
Unplanned unavailable hours	0.07	0	0	0	0	1.22	0	0
Fault exposure hours	0	0	0	0	0	0	0	0
Effective Reset hours	0	0	0	0	0	0	0	0
Required hours	2184.00	2183.00	2208.00	2209.00	2140.66	2037.07	2208.00	2209.00
<b>Train 4</b>								
Planned unavailable hours	0.32	0	0	0	0	1.65	0.55	0
Unplanned unavailable hours	0.07	0	0	0	0	0	0	0
Fault exposure hours	0	0	0	0	0	0	0	0
Effective Reset hours	0	0	0	0	0	0	0	0
Required hours	2184.00	2183.00	2208.00	2209.00	2140.66	2037.07	2208.00	2209.00
<b>Indicator value</b>	<b>2.3%</b>	<b>2.1%</b>	<b>1.8%</b>	<b>1.1%</b>	<b>1.1%</b>	<b>1.1%</b>	<b>0.6%</b>	<b>0.6%</b>

Licensee Comments: none

### Safety System Unavailability, High Pressure Injection System (HPCI)



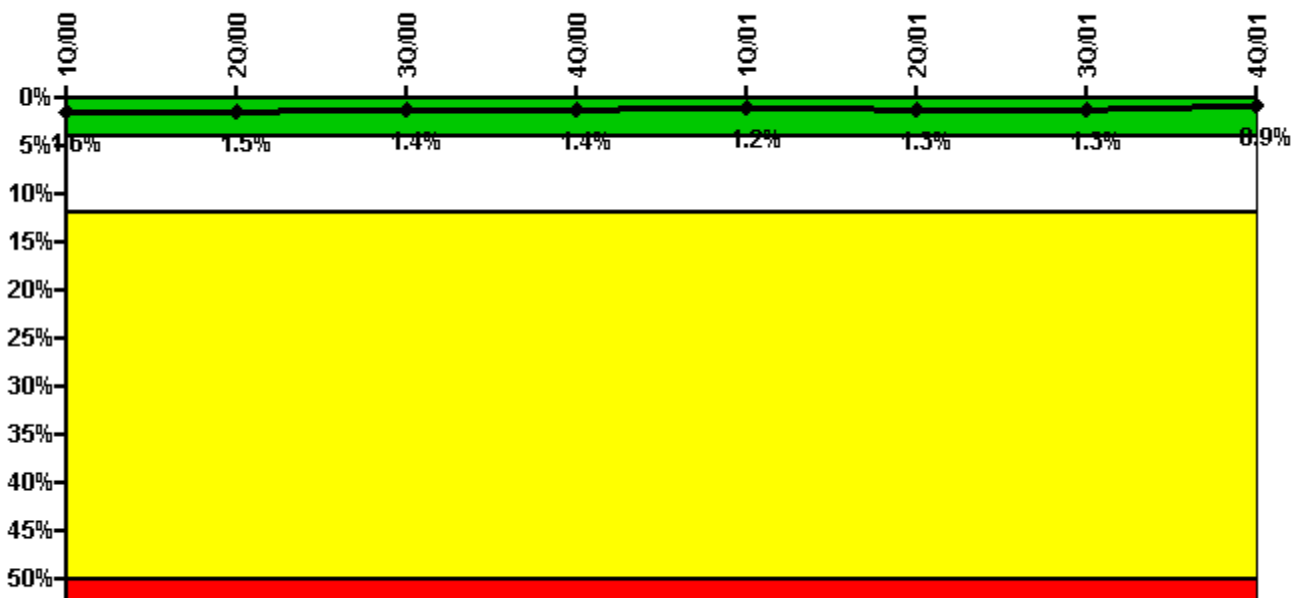
Thresholds: White > 4.0% Yellow > 12.0% Red > 50.0%

#### Notes

Safety System Unavailability, High Pressure Injection System (HPCI)	1Q/00	2Q/00	3Q/00	4Q/00	1Q/01	2Q/01	3Q/01	4Q/01
<b>Train 1</b>								
Planned unavailable hours	0	8.60	1.40	1.70	3.60	7.20	4.80	12.60
Unplanned unavailable hours	0	0	0	12.70	0	0.10	1.50	0
Fault exposure hours	0	0	0	0	0	0	0	0
Effective Reset hours	0	0	0	0	0	0	0	0
Required hours	2120.60	2183.00	2208.00	2209.00	2101.90	1781.40	2208.00	2209.00
<b>Indicator value</b>	<b>1.2%</b>	<b>1.1%</b>	<b>0.9%</b>	<b>1.0%</b>	<b>0.9%</b>	<b>0.6%</b>	<b>0.7%</b>	<b>0.7%</b>

Licensee Comments: none

### Safety System Unavailability, Heat Removal System (RCIC)



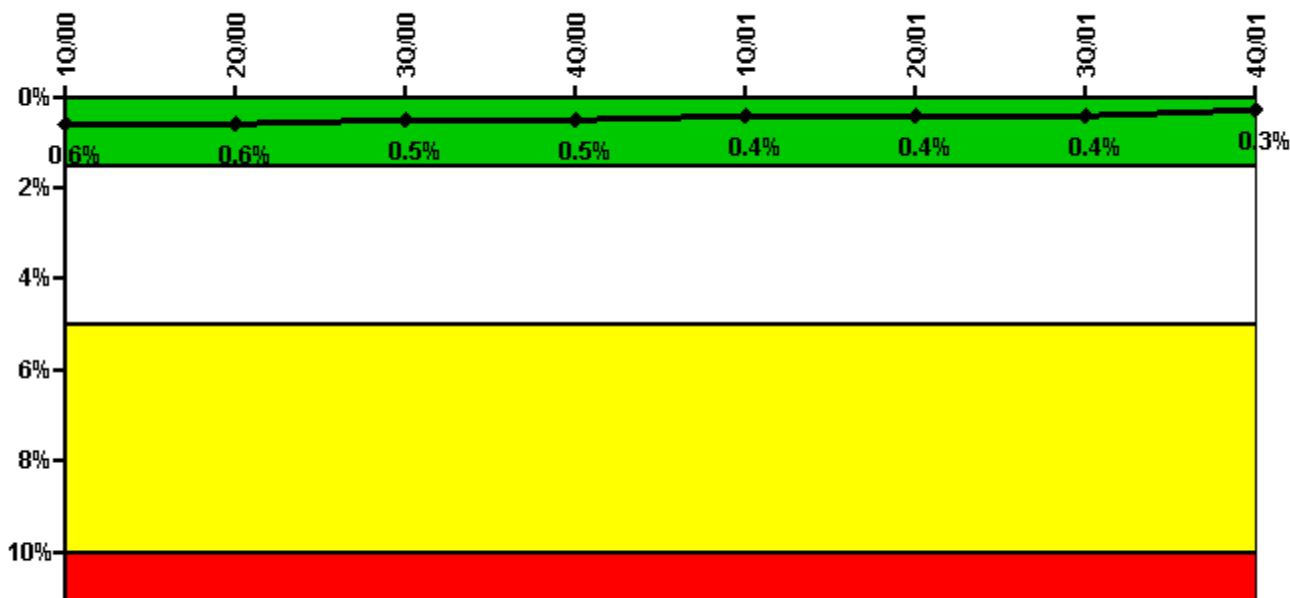
Thresholds: White > 4.0% Yellow > 12.0% Red > 50.0%

#### Notes

Safety System Unavailability, Heat Removal System (RCIC)	1Q/00	2Q/00	3Q/00	4Q/00	1Q/01	2Q/01	3Q/01	4Q/01
<b>Train 1</b>								
Planned unavailable hours	1.80	2.00	16.20	6.70	7.80	30.70	5.40	3.80
Unplanned unavailable hours	0	0	0	0	0	19.80	1.70	0
Fault exposure hours	0	0	0	0	0	0	0	0
Effective Reset hours	0	0	0	0	0	0	0	0
Required hours	2120.60	2183.00	2208.00	2209.00	2101.90	1781.40	2208.00	2209.00
<b>Indicator value</b>	<b>1.6%</b>	<b>1.5%</b>	<b>1.4%</b>	<b>1.4%</b>	<b>1.2%</b>	<b>1.3%</b>	<b>1.3%</b>	<b>0.9%</b>

Licensee Comments: none

### Safety System Unavailability, Residual Heat Removal System



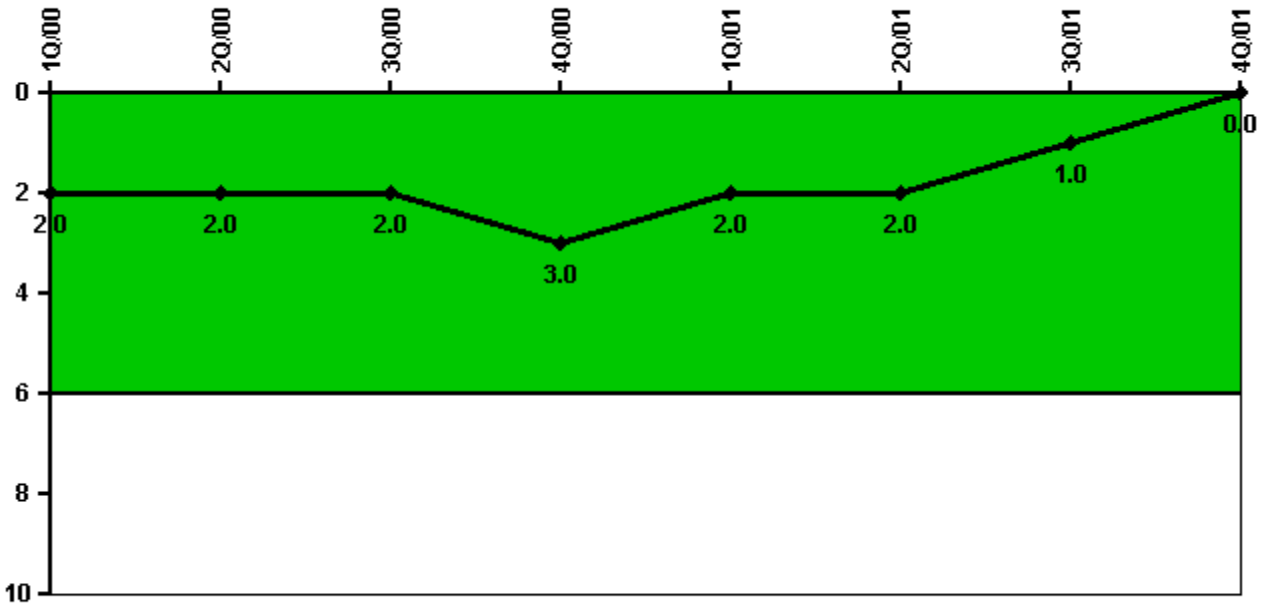
Thresholds: White > 1.5% Yellow > 5.0% Red > 10.0%

#### Notes

Safety System Unavailability, Residual Heat Removal System	1Q/00	2Q/00	3Q/00	4Q/00	1Q/01	2Q/01	3Q/01	4Q/01
<b>Train 1</b>								
Planned unavailable hours	12.27	0	0	34.62	3.80	0	0	10.40
Unplanned unavailable hours	0	0	0	0	0	0	0	0
Fault exposure hours	0	0	0	0	0	0	0	0
Effective Reset hours	0	0	0	0	0	0	0	0
Required hours	2184.00	2183.00	2208.00	2209.00	2160.00	2183.00	2208.00	2209.00
<b>Train 2</b>								
Planned unavailable hours	2.72	21.22	0	0	0	15.90	0	0
Unplanned unavailable hours	0	0	0	0	0	0	0	0
Fault exposure hours	0	0	0	0	0	0	0	0
Effective Reset hours	0	0	0	0	0	0	0	0
Required hours	2184.00	2183.00	2208.00	2209.00	2160.00	2183.00	2208.00	2209.00
<b>Indicator value</b>	<b>0.6%</b>	<b>0.6%</b>	<b>0.5%</b>	<b>0.5%</b>	<b>0.4%</b>	<b>0.4%</b>	<b>0.4%</b>	<b>0.3%</b>

Licensee Comments: none

### Safety System Functional Failures (BWR)



Thresholds: White > 6.0

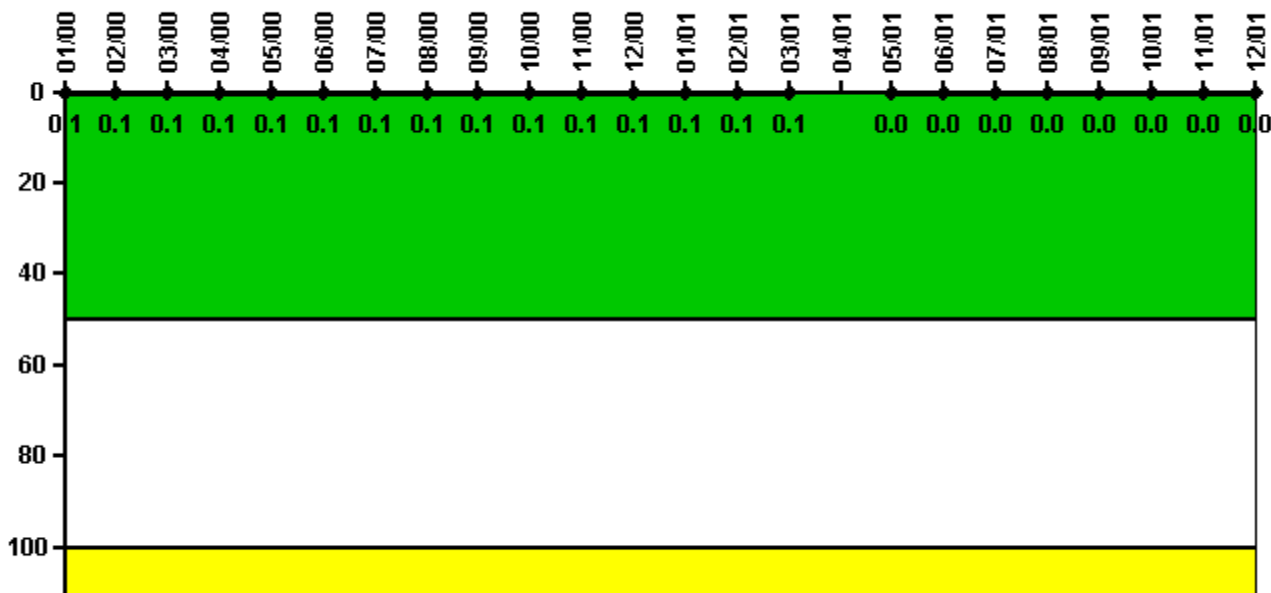
#### Notes

Safety System Functional Failures (BWR)	1Q/00	2Q/00	3Q/00	4Q/00	1Q/01	2Q/01	3Q/01	4Q/01
Safety System Functional Failures	1	0	1	1	0	0	0	0
Indicator value	2	2	2	3	2	2	1	0

Licensee Comments: none



### Reactor Coolant System Activity



Thresholds: White > 50.0 Yellow > 100.0

### Notes

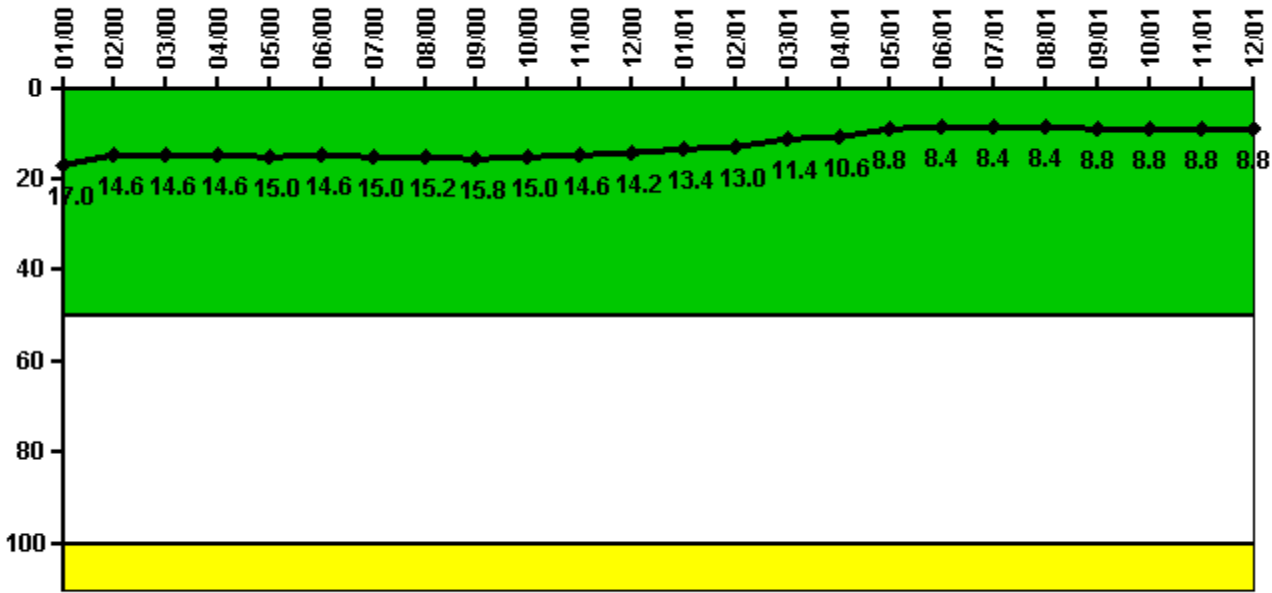
Reactor Coolant System Activity	1/00	2/00	3/00	4/00	5/00	6/00	7/00	8/00	9/00	10/00	11/00	12/00
Maximum activity	0.000130	0.000139	0.000146	0.000146	0.000147	0.000137	0.000134	0.000143	0.000157	0.000146	0.000162	0.000157
Technical specification limit	0.2	0.2	0.2	0.2	0.2	0.2	0.2	0.2	0.2	0.2	0.2	0.2
Indicator value	0.1	0.1	0.1	0.1	0.1	0.1	0.1	0.1	0.1	0.1	0.1	0.1

Reactor Coolant System Activity	1/01	2/01	3/01	4/01	5/01	6/01	7/01	8/01	9/01	10/01	11/01	12/01
Maximum activity	0.000238	0.000192	0.000248	N/A	0.000050	0.000029	0.000039	0.000028	0.000021	0.000020	0.000018	0.000012
Technical specification limit	0.2	0.2	0.2	0.2	0.2	0.2	0.2	0.2	0.2	0.2	0.2	0.2
Indicator value	0.1	0.1	0.1	N/A	0	0	0	0	0	0	0	0

Licensee Comments: none

### Reactor Coolant System Leakage



Thresholds: White > 50.0 Yellow > 100.0

#### Notes

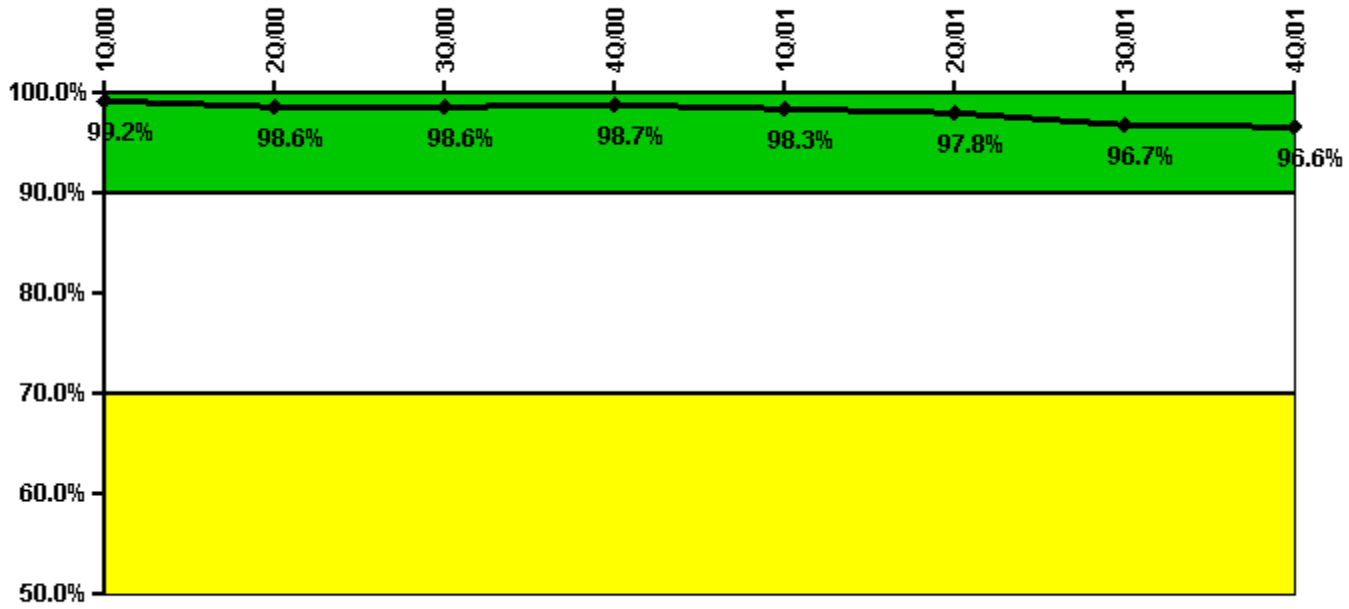
Reactor Coolant System Leakage	1/00	2/00	3/00	4/00	5/00	6/00	7/00	8/00	9/00	10/00	11/00	12/00
Maximum leakage	4.240	3.640	3.640	3.640	3.740	3.640	3.740	3.790	3.940	3.740	3.640	3.540
Technical specification limit	25.0	25.0	25.0	25.0	25.0	25.0	25.0	25.0	25.0	25.0	25.0	25.0
Indicator value	17.0	14.6	14.6	14.6	15.0	14.6	15.0	15.2	15.8	15.0	14.6	14.2

Reactor Coolant System Leakage	1/01	2/01	3/01	4/01	5/01	6/01	7/01	8/01	9/01	10/01	11/01	12/01
Maximum leakage	3.340	3.240	2.840	2.640	2.200	2.100	2.100	2.100	2.200	2.200	2.200	2.200
Technical specification limit	25.0	25.0	25.0	25.0	25.0	25.0	25.0	25.0	25.0	25.0	25.0	25.0
Indicator value	13.4	13.0	11.4	10.6	8.8	8.4	8.4	8.4	8.8	8.8	8.8	8.8

Licensee Comments: none

### Drill/Exercise Performance



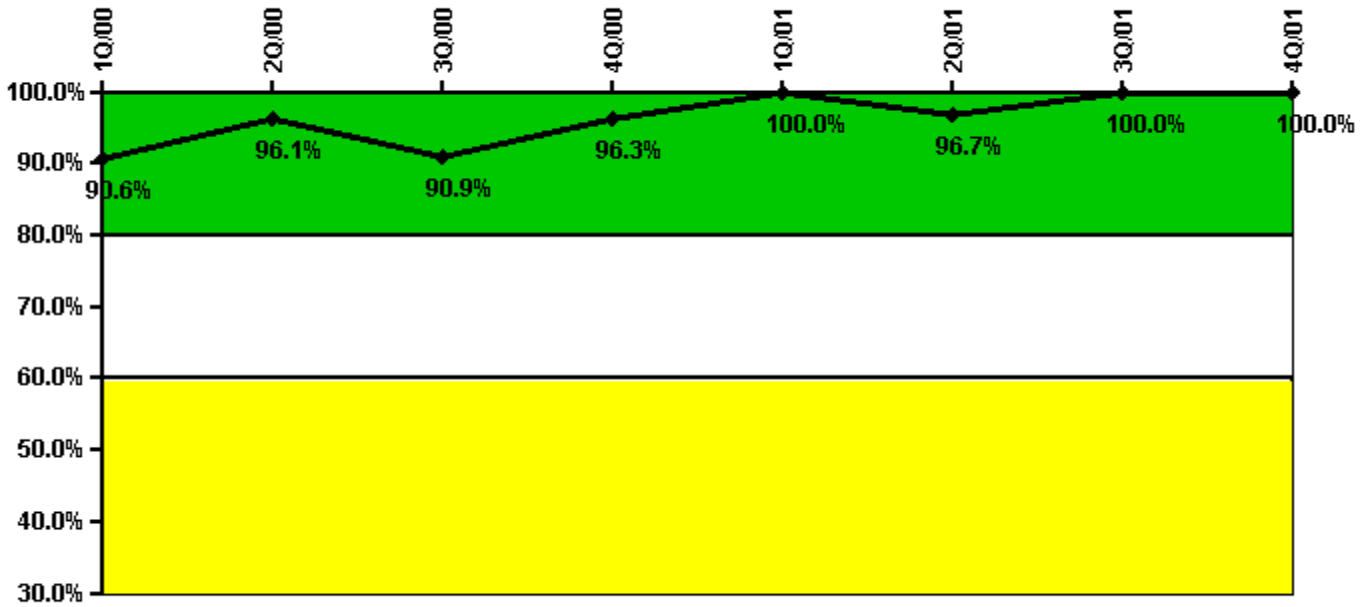
Thresholds: White < 90.0% Yellow < 70.0%

### Notes

Drill/Exercise Performance	1Q/00	2Q/00	3Q/00	4Q/00	1Q/01	2Q/01	3Q/01	4Q/01
Successful opportunities	67.0	9.0	0	18.0	32.0	3.0	8.0	6.0
Total opportunities	67.0	10.0	0	18.0	33.0	4.0	10.0	6.0
Indicator value	99.2%	98.6%	98.6%	98.7%	98.3%	97.8%	96.7%	96.6%

Licensee Comments: none

### ERO Drill Participation



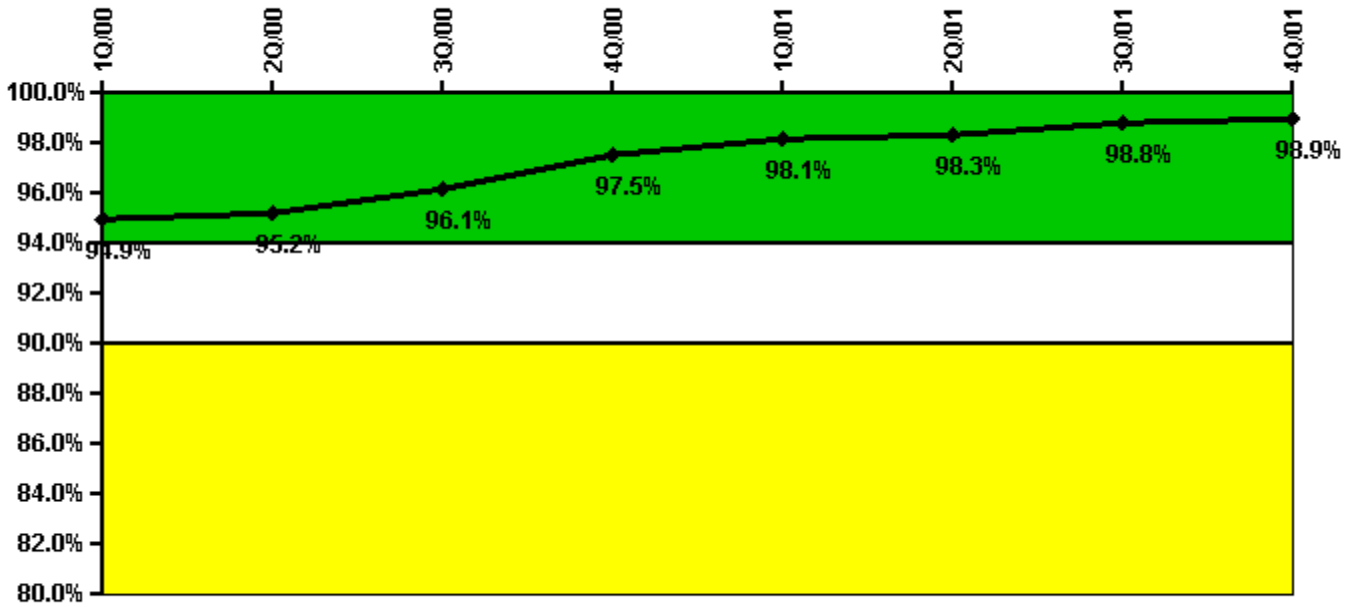
Thresholds: White < 80.0% Yellow < 60.0%

#### Notes

ERO Drill Participation	1Q/00	2Q/00	3Q/00	4Q/00	1Q/01	2Q/01	3Q/01	4Q/01
Participating Key personnel	48.0	49.0	50.0	52.0	59.0	58.0	43.0	45.0
Total Key personnel	53.0	51.0	55.0	54.0	59.0	60.0	43.0	45.0
Indicator value	90.6%	96.1%	90.9%	96.3%	100.0%	96.7%	100.0%	100.0%

Licensee Comments: none

### Alert & Notification System



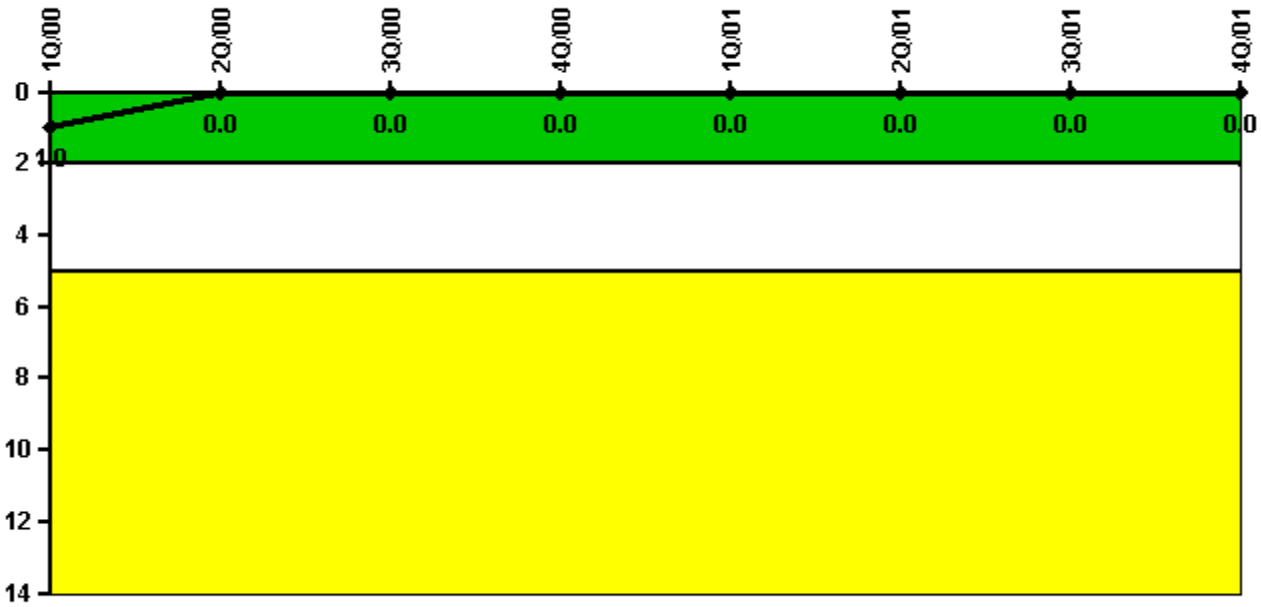
Thresholds: White < 94.0% Yellow < 90.0%

#### Notes

Alert & Notification System	1Q/00	2Q/00	3Q/00	4Q/00	1Q/01	2Q/01	3Q/01	4Q/01
Successful siren-tests	459	954	2561	4391	2125	2118	2124	2119
Total sirens-tests	495	990	2640	4455	2145	2145	2145	2145
Indicator value	94.9%	95.2%	96.1%	97.5%	98.1%	98.3%	98.8%	98.9%

Licensee Comments: none

### Occupational Exposure Control Effectiveness



Thresholds: White > 2.0 Yellow > 5.0

#### Notes

Occupational Exposure Control Effectiveness	1Q/00	2Q/00	3Q/00	4Q/00	1Q/01	2Q/01	3Q/01	4Q/01
High radiation area occurrences	0	0	0	0	0	0	0	0
Very high radiation area occurrences	0	0	0	0	0	0	0	0
Unintended exposure occurrences	0	0	0	0	0	0	0	0
<b>Indicator value</b>	<b>1</b>	<b>0</b>	<b>0</b>	<b>0</b>	<b>0</b>	<b>0</b>	<b>0</b>	<b>0</b>

Licensee Comments: none

### RETS/ODCM Radiological Effluent



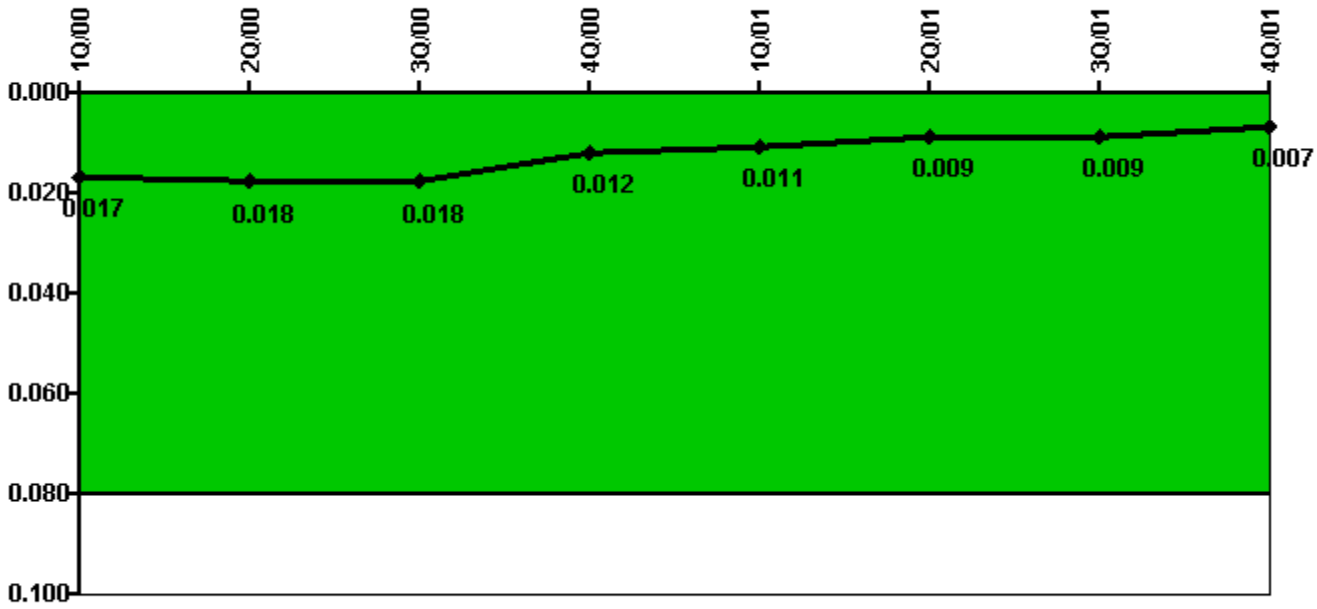
Thresholds: White > 1.0 Yellow > 3.0

#### Notes

RETS/ODCM Radiological Effluent	1Q/00	2Q/00	3Q/00	4Q/00	1Q/01	2Q/01	3Q/01	4Q/01
RETS/ODCM occurrences	0	0	0	0	0	0	0	0
Indicator value	0	0	0	0	0	0	0	0

Licensee Comments: none

### Protected Area Security Performance Index



Thresholds: White > 0.080

#### Notes

Protected Area Security Performance Index	1Q/00	2Q/00	3Q/00	4Q/00	1Q/01	2Q/01	3Q/01	4Q/01
IDS compensatory hours	143.40	63.20	29.50	81.70	85.50	3.70	75.20	13.80
CCTV compensatory hours	17.6	36.4	16.1	7.9	45.5	5.6	1.6	8.8
IDS normalization factor	2.35	2.35	2.35	2.35	2.35	2.35	2.35	2.35
CCTV normalization factor	1.2	1.2	1.2	1.2	1.2	1.2	1.2	1.2
<b>Index Value</b>	<b>0.017</b>	<b>0.018</b>	<b>0.018</b>	<b>0.012</b>	<b>0.011</b>	<b>0.009</b>	<b>0.009</b>	<b>0.007</b>

Licensee Comments: none



### Personnel Screening Program



Thresholds: White > 2.0 Yellow > 5.0

### Notes

Personnel Screening Program	1Q/00	2Q/00	3Q/00	4Q/00	1Q/01	2Q/01	3Q/01	4Q/01
Program failures	0	0	0	0	0	0	0	0
Indicator value	0	0	0	0	0	0	0	0

Licensee Comments: none

### FFD/Personnel Reliability



Thresholds: White > 2.0 Yellow > 5.0

### Notes

FFD/Personnel Reliability	1Q/00	2Q/00	3Q/00	4Q/00	1Q/01	2Q/01	3Q/01	4Q/01
Program Failures	0	0	0	0	0	0	0	0
Indicator value	0	0	0	0	0	0	0	0

Licensee Comments: none

▲ [PI Summary](#) | [Inspection Findings Summary](#) | [Action Matrix Summary](#) | [Reactor Oversight Process](#)

Last Modified: March 15, 2002