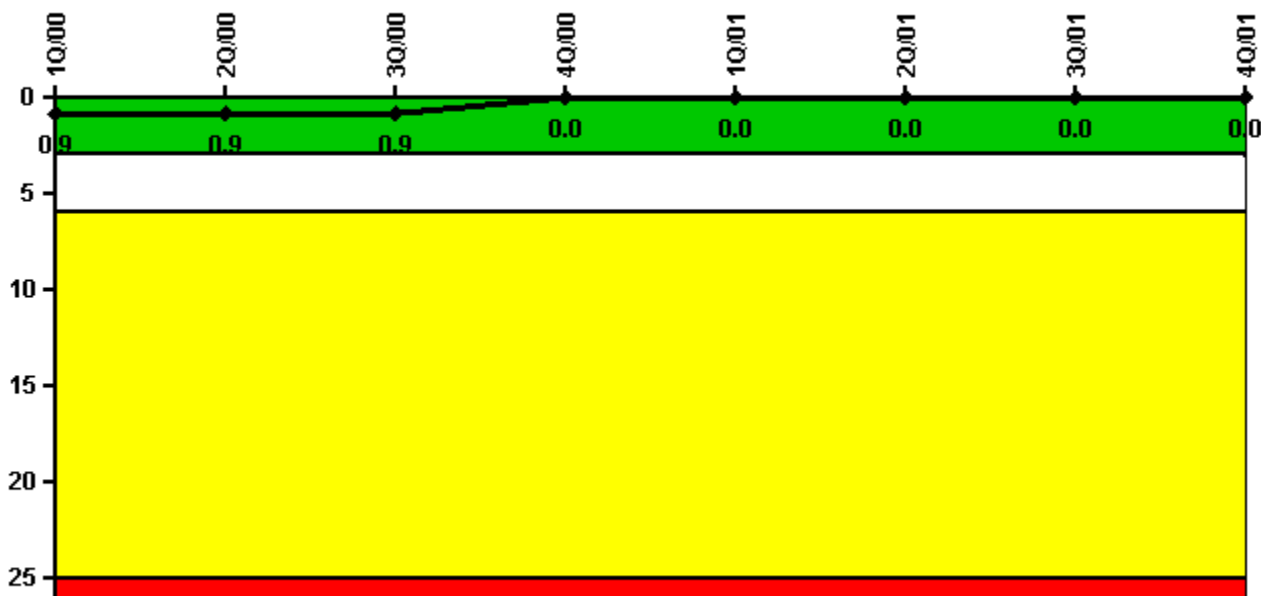


Diablo Canyon 2

4Q/2001 Performance Indicators

Licensee's General Comments: none

Unplanned Scrams per 7000 Critical Hrs



Thresholds: White > 3.0 Yellow > 6.0 Red > 25.0

Notes

Unplanned Scrams per 7000 Critical Hrs	1Q/00	2Q/00	3Q/00	4Q/00	1Q/01	2Q/01	3Q/01	4Q/01
Unplanned scrams	0	0	0	0	0	0	0	0
Critical hours	2184.0	2183.0	1983.3	2209.0	2160.0	1545.0	2208.0	2209.0
Indicator value	0.9	0.9	0.9	0	0	0	0	0

Licensee Comments: none

Scrams with Loss of Normal Heat Removal



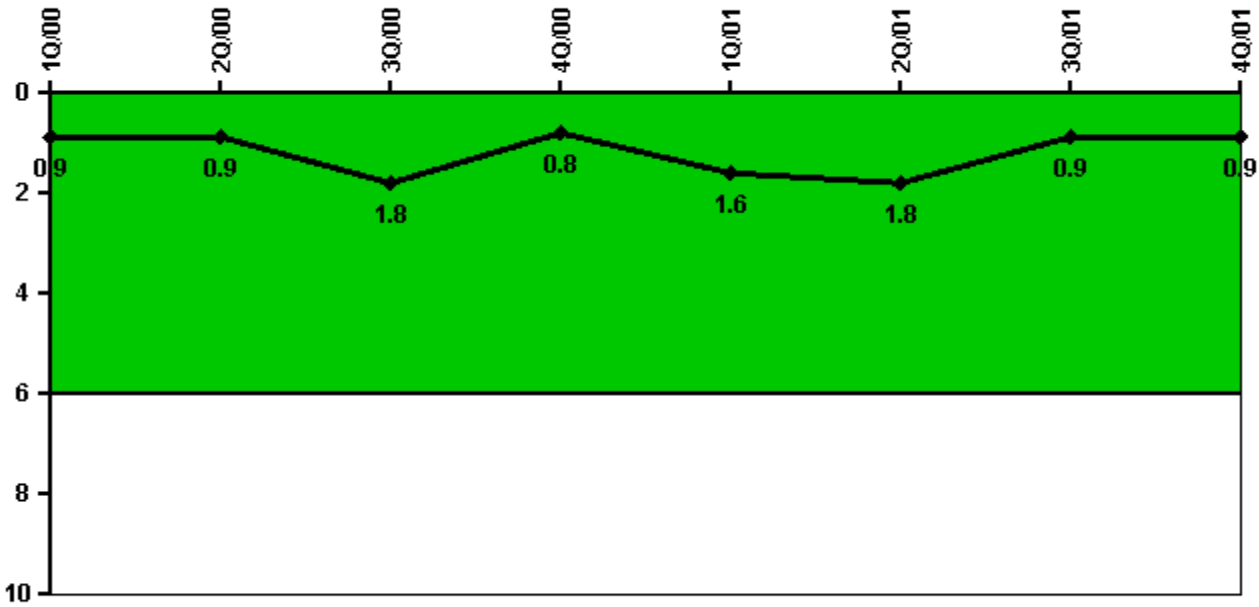
Thresholds: White > 2.0 Yellow > 10.0 Red > 20.0

Notes

Scrams with Loss of Normal Heat Removal	1Q/00	2Q/00	3Q/00	4Q/00	1Q/01	2Q/01	3Q/01	4Q/01
Scrams	0	0	0	0	0	0	0	0
Indicator value	3.0	3.0	2.0	2.0	2.0	2.0	2.0	1.0

Licensee Comments: none

Unplanned Power Changes per 7000 Critical Hrs



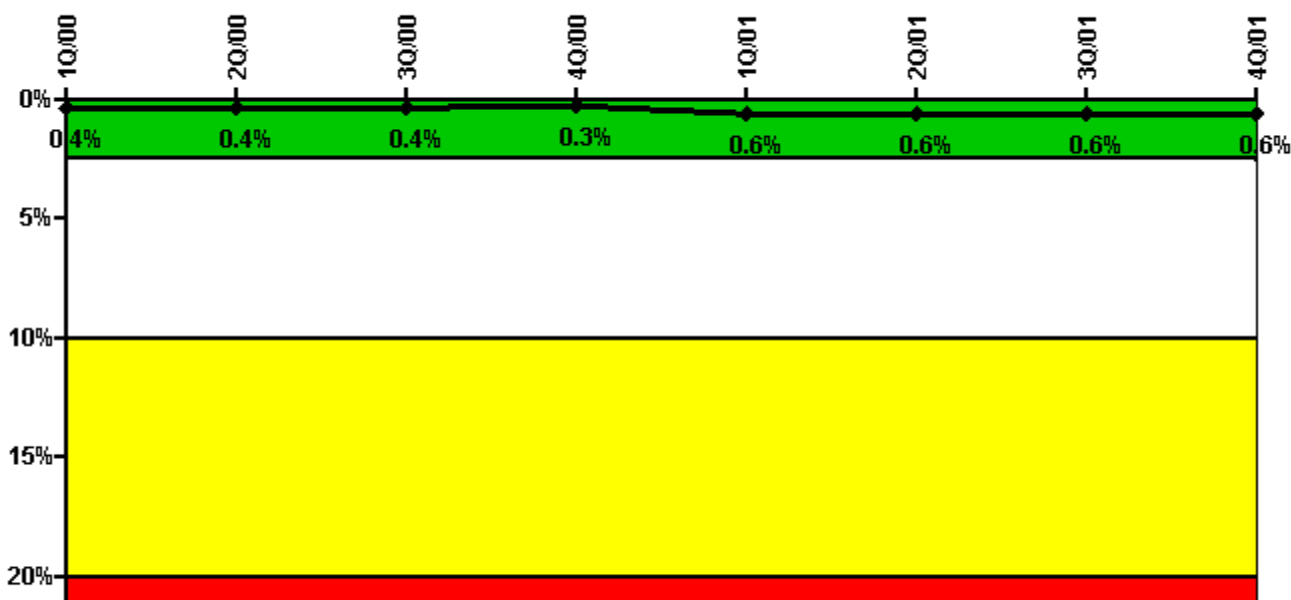
Thresholds: White > 6.0

Notes

Unplanned Power Changes per 7000 Critical Hrs	1Q/00	2Q/00	3Q/00	4Q/00	1Q/01	2Q/01	3Q/01	4Q/01
Unplanned power changes	0	0	1.0	0	1.0	0	0	0
Critical hours	2184.0	2183.0	1983.3	2209.0	2160.0	1545.0	2208.0	2209.0
Indicator value	0.9	0.9	1.8	0.8	1.6	1.8	0.9	0.9

Licensee Comments: none

Safety System Unavailability, Emergency AC Power, >2EDG



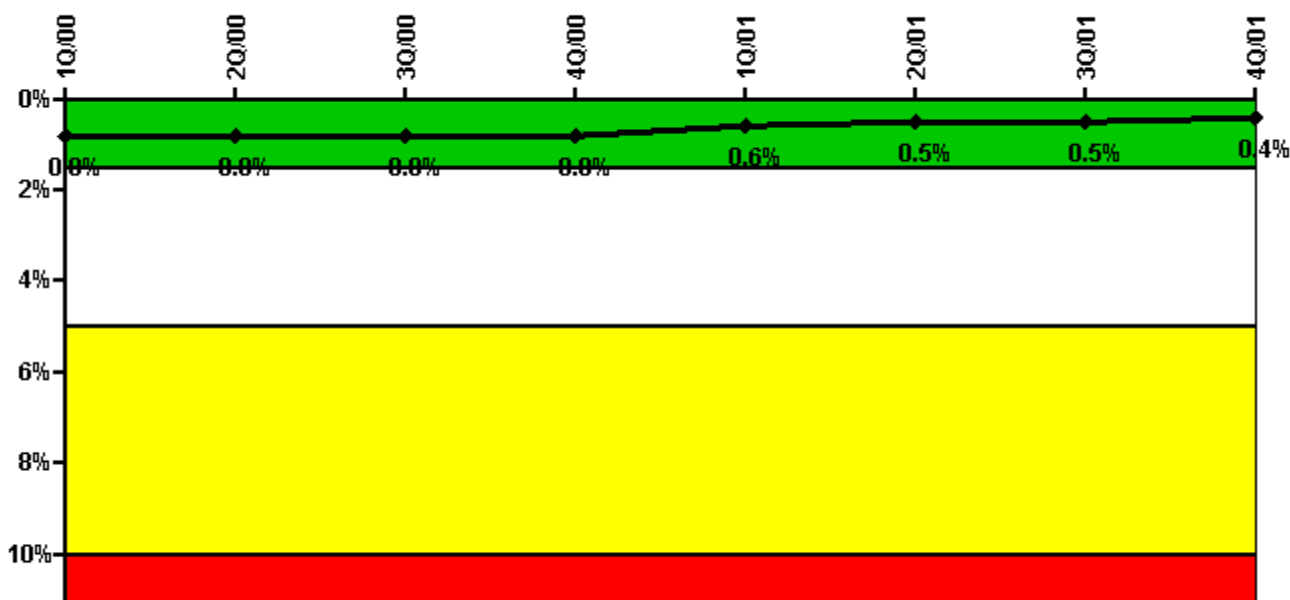
Thresholds: White > 2.5% Yellow > 10.0% Red > 20.0%

Notes

Safety System Unavailability, Emergency AC Power, >2EDG	1Q/00	2Q/00	3Q/00	4Q/00	1Q/01	2Q/01	3Q/01	4Q/01
Train 1								
Planned unavailable hours	32.02	0.10	1.80	0.20	59.10	0.10	0.10	0.10
Unplanned unavailable hours	0	0	0	0	15.30	0	0	0
Fault exposure hours	0	0	0	0	0	0	0	0
Effective Reset hours	0	0	0	0	0	0	0	0
Required hours	2184.00	2183.00	2208.00	2209.00	2160.00	1598.00	2208.00	2209.00
Train 2								
Planned unavailable hours	34.73	0.10	1.30	0.10	66.20	0.10	0.30	0.10
Unplanned unavailable hours	0	0	0	0	6.10	0	0	0
Fault exposure hours	0	0	0	0	0	0	0	0
Effective Reset hours	0	0	0	0	0	0	0	0
Required hours	2184.00	2183.00	2208.00	2209.00	2160.00	1598.00	2208.00	2209.00
Train 3								
Planned unavailable hours	25.47	0.10	1.30	0.10	85.60	0.20	0.10	0.10
Unplanned unavailable hours	0	0	0	0	0	0	0	0
Fault exposure hours	0	0	0	0	0	0	0	0
Effective Reset hours	0	0	0	0	0	0	0	0
Required hours	2184.00	2183.00	2208.00	2209.00	2160.00	1598.00	2208.00	2209.00
Indicator value	0.4%	0.4%	0.4%	0.3%	0.6%	0.6%	0.6%	0.6%

Licensee Comments: none

Safety System Unavailability, High Pressure Injection System (HPSI)



Thresholds: White > 1.5% Yellow > 5.0% Red > 10.0%

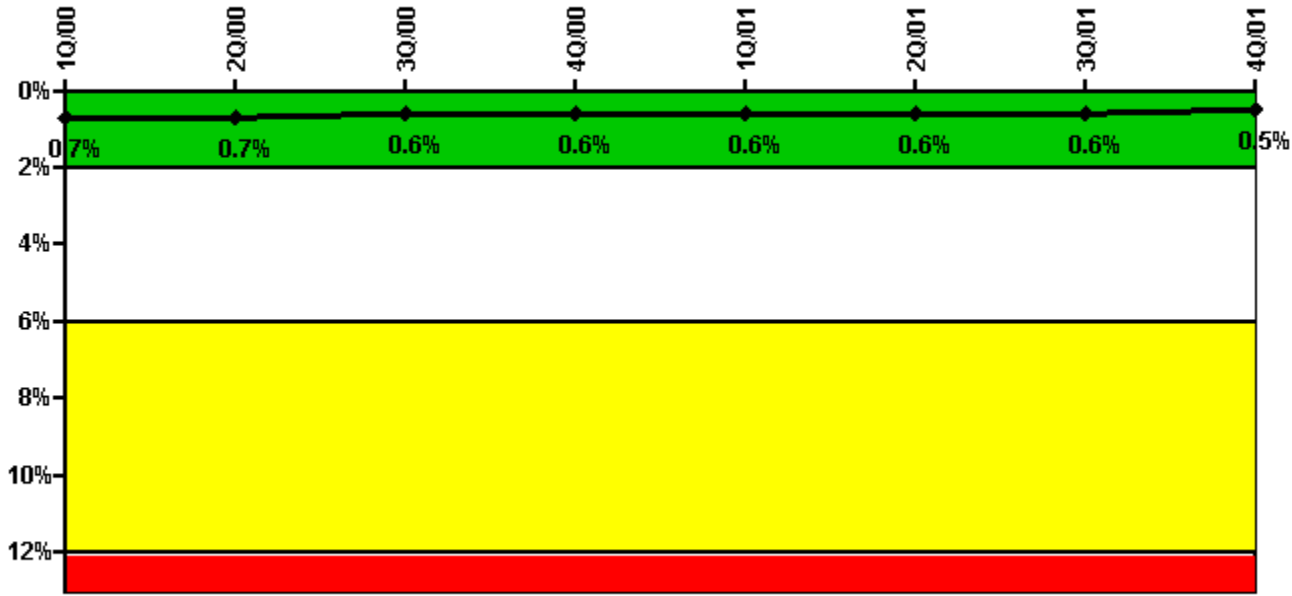
Notes

Safety System Unavailability, High Pressure Injection System (HPSI)	1Q/00	2Q/00	3Q/00	4Q/00	1Q/01	2Q/01	3Q/01	4Q/01
Train 1								
Planned unavailable hours	39.83	31.50	18.60	0	22.60	0	0	13.50
Unplanned unavailable hours	0	0	0	0	0	0	0	0
Fault exposure hours	0	0	0	0	0	0	0	0
Effective Reset hours	0	0	0	0	0	0	0	0
Required hours	2184.00	2183.00	1983.30	2209.00	2160.00	1544.00	2208.00	2209.00
Train 2								
Planned unavailable hours	33.80	0	0	12.30	0.10	0	20.10	0
Unplanned unavailable hours	0.77	0	0	0	0	0	0	0
Fault exposure hours	0	0	0	0	0	0	0	0
Effective Reset hours	0	0	0	0	0	0	0	0
Required hours	2184.00	2183.00	1983.30	2209.00	2160.00	1544.00	2208.00	2209.00
Train 3								
Planned unavailable hours	11.82	10.30	0.20	21.80	0	0.50	8.40	0.40
Unplanned unavailable hours	0	0	0	0	0	0	0	0
Fault exposure hours	0	0	0	0	0	0	0	0
Effective Reset hours	0	0	0	0	0	0	0	0
Required hours	2184.00	2183.00	1983.30	2209.00	2160.00	1544.00	2208.00	2209.00
Train 4								
Planned unavailable hours	3.23	11.20	12.20	0.10	24.00	1.00	12.80	11.30
Unplanned unavailable hours	0	0	0	0	0	0	0	0
Fault exposure hours	0	0	0	0	0	0	0	0
Effective Reset hours	0	0	0	0	0	0	0	0
Required hours	2184.00	2183.00	1983.30	2209.00	2160.00	1544.00	2208.00	2209.00
Indicator value	0.8%	0.8%	0.8%	0.8%	0.6%	0.5%	0.5%	0.4%

Licensee Comments:

3Q/01: The Train 4 unavailability hours were increased from 11.4 to 12.8 to correct an error in the determination of actual train unavailability. This change does not affect any other quarters or the color of the PI.

Safety System Unavailability, Heat Removal System (AFW)



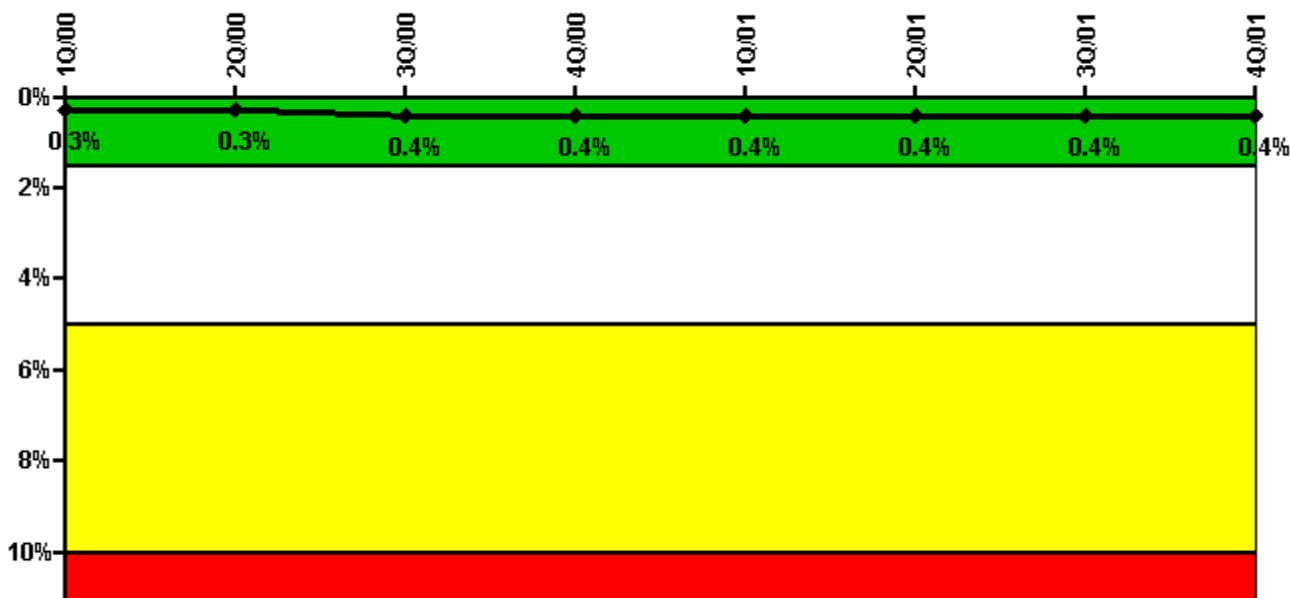
Thresholds: White > 2.0% Yellow > 6.0% Red > 12.0%

Notes

Safety System Unavailability, Heat Removal System (AFW)	1Q/00	2Q/00	3Q/00	4Q/00	1Q/01	2Q/01	3Q/01	4Q/01
Train 1								
Planned unavailable hours	0.90	19.50	16.50	15.50	1.80	18.50	23.50	2.20
Unplanned unavailable hours	0	0	0	0	0	0	0	0
Fault exposure hours	0	0	0	0	0	0	0	0
Effective Reset hours	0	0	0	0	0	0	0	0
Required hours	2184.00	2183.00	1983.30	2209.00	2160.00	1544.00	2208.00	2209.00
Train 2								
Planned unavailable hours	14.27	0.70	14.20	1.60	20.80	1.90	1.10	17.10
Unplanned unavailable hours	0	0	0	0	0	0	0	0
Fault exposure hours	0	0	0	0	0	0	0	0
Effective Reset hours	0	0	0	0	0	0	0	0
Required hours	2184.00	2183.00	1983.30	2209.00	2160.00	1544.00	2208.00	2209.00
Train 3								
Planned unavailable hours	9.42	0.90	0.80	12.90	1.70	10.80	24.00	1.70
Unplanned unavailable hours	0	0	0	0	0	0	0	0
Fault exposure hours	0	0	0	0	0	0	0	0
Effective Reset hours	0	0	0	0	0	0	0	0
Required hours	2184.00	2183.00	1983.30	2209.00	2160.00	1544.00	2208.00	2209.00
Indicator value	0.7%	0.7%	0.6%	0.6%	0.6%	0.6%	0.6%	0.5%

Licensee Comments: none

Safety System Unavailability, Residual Heat Removal System



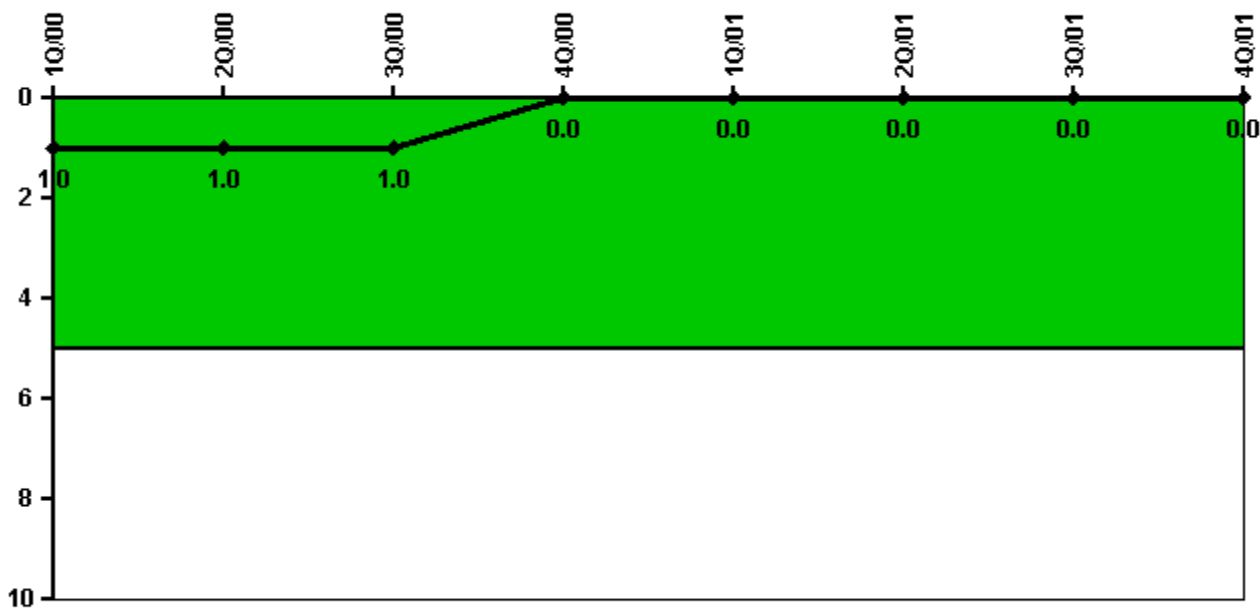
Thresholds: White > 1.5% Yellow > 5.0% Red > 10.0%

Notes

Safety System Unavailability, Residual Heat Removal System	1Q/00	2Q/00	3Q/00	4Q/00	1Q/01	2Q/01	3Q/01	4Q/01
Train 1								
Planned unavailable hours	17.47	0.40	11.30	0.40	1.30	13.40	0.60	13.80
Unplanned unavailable hours	0	0	0	9.00	0	0	0	0
Fault exposure hours	0	0	0	0	0	0	0	0
Effective Reset hours	0	0	0	0	0	0	0	0
Required hours	2184.00	2183.00	2208.00	2209.00	2160.00	1598.00	2208.00	2209.00
Train 2								
Planned unavailable hours	19.95	0.80	0.10	14.60	0.90	0	9.00	0.10
Unplanned unavailable hours	0	0	0	0	0	0	0	0
Fault exposure hours	0	0	0	0	0	0	0	0
Effective Reset hours	0	0	0	0	0	0	0	0
Required hours	2184.00	2183.00	2208.00	2209.00	2160.00	1598.00	2208.00	2209.00
Indicator value	0.3%	0.3%	0.4%	0.4%	0.4%	0.4%	0.4%	0.4%

Licensee Comments: none

Safety System Functional Failures (PWR)



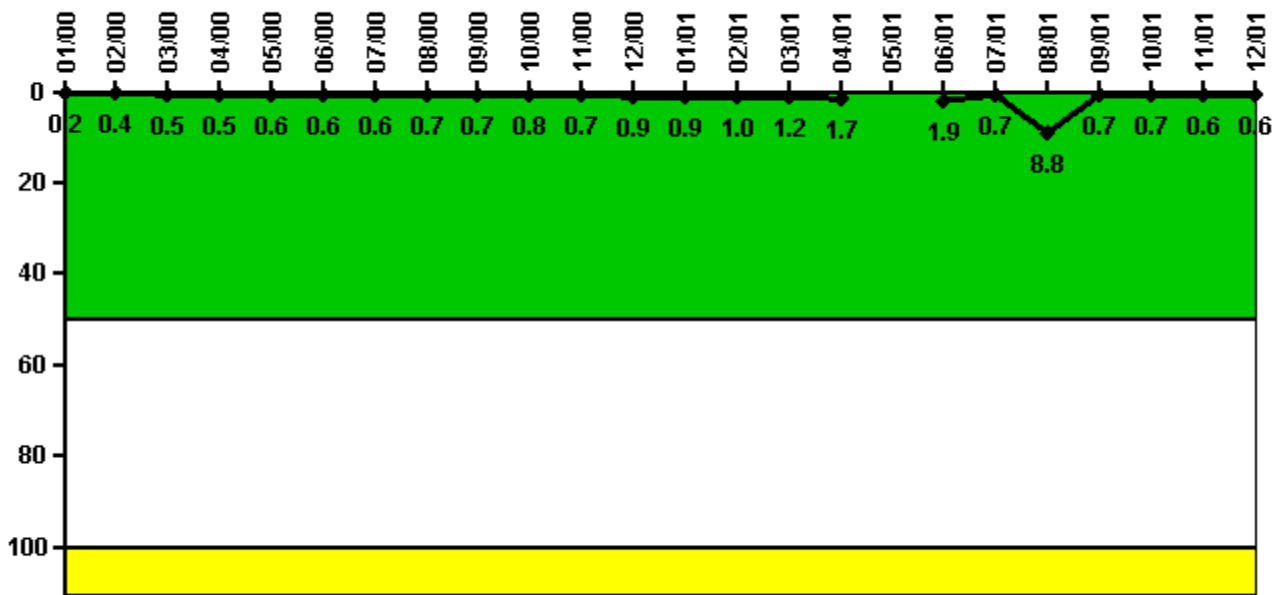
Thresholds: White > 5.0

Notes

Safety System Functional Failures (PWR)	1Q/00	2Q/00	3Q/00	4Q/00	1Q/01	2Q/01	3Q/01	4Q/01
Safety System Functional Failures	0	0	0	0	0	0	0	0
Indicator value	1	1	1	0	0	0	0	0

Licensee Comments: none

Reactor Coolant System Activity



Thresholds: White > 50.0 Yellow > 100.0

Notes

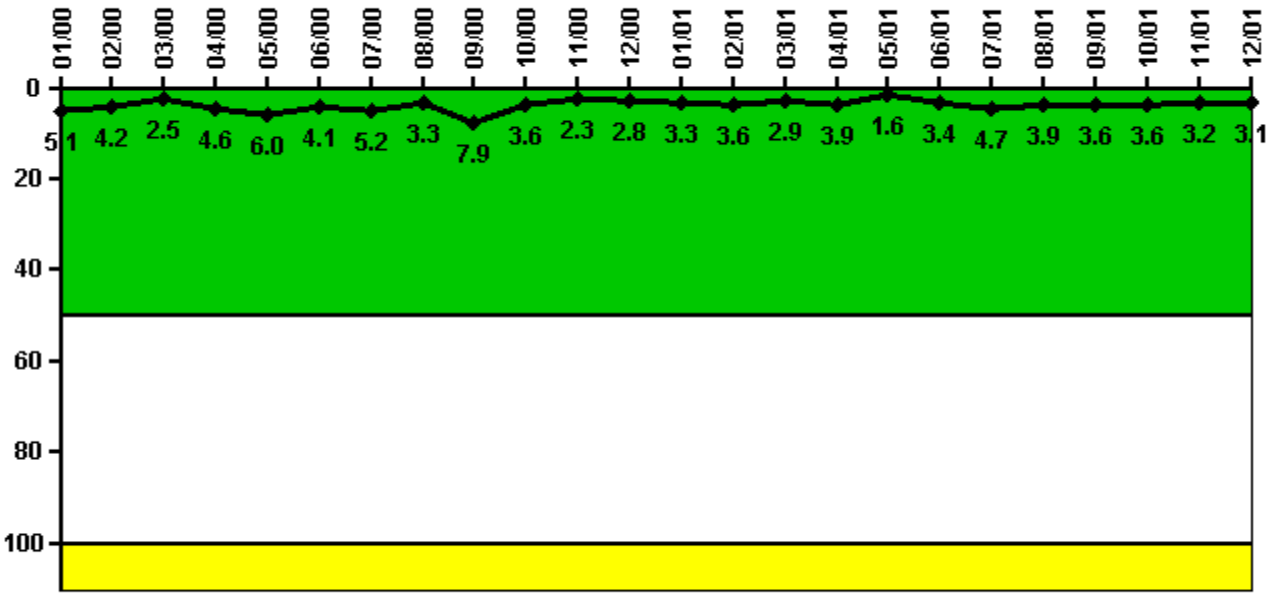
Reactor Coolant System Activity	1/00	2/00	3/00	4/00	5/00	6/00	7/00	8/00	9/00	10/00	11/00	12/00
Maximum activity	0.002050	0.004440	0.004900	0.004680	0.005500	0.005910	0.004390	0.004800	0.004900	0.005530	0.005320	0.006130
Technical specification limit	1.0	1.0	1.0	1.0	1.0	1.0	0.7	0.7	0.7	0.7	0.7	0.7
Indicator value	0.2	0.4	0.5	0.5	0.6	0.6	0.6	0.7	0.7	0.8	0.7	0.9

Reactor Coolant System Activity	1/01	2/01	3/01	4/01	5/01	6/01	7/01	8/01	9/01	10/01	11/01	12/01
Maximum activity	0.006110	0.006920	0.005550	0.007800	N/A	0.013600	0.005120	0.062600	0.005060	0.005300	0.004370	0.004070
Technical specification limit	0.7	0.7	0.5	0.5	N/A	0.7	0.7	0.7	0.7	0.7	0.7	0.7
Indicator value	0.9	1.0	1.2	1.7	N/A	1.9	0.7	8.8	0.7	0.7	0.6	0.6

Licensee Comments:

12/01: The limits for RCS dose equivalent I-131 specific activity are being administratively controlled at lower values (varies based on RCS letdown flow rate) than the Technical Specification limit of 1.0 micro Curies per gram. The reduced limits are to compensate for non-conservatism identified in a vendor's calculation for iodine appearance rates utilized in accident dose analyses. The reduced limits will remain in effect until affected analyses are revised.

Reactor Coolant System Leakage



Thresholds: White > 50.0 Yellow > 100.0

Notes

Reactor Coolant System Leakage	1/00	2/00	3/00	4/00	5/00	6/00	7/00	8/00	9/00	10/00	11/00	12/00
Maximum leakage	0.508	0.417	0.247	0.458	0.595	0.411	0.515	0.325	0.785	0.364	0.226	0.282
Technical specification limit	10.0	10.0	10.0	10.0	10.0	10.0	10.0	10.0	10.0	10.0	10.0	10.0
Indicator value	5.1	4.2	2.5	4.6	6.0	4.1	5.2	3.3	7.9	3.6	2.3	2.8

Reactor Coolant System Leakage	1/01	2/01	3/01	4/01	5/01	6/01	7/01	8/01	9/01	10/01	11/01	12/01
Maximum leakage	0.328	0.362	0.291	0.388	0.162	0.336	0.471	0.394	0.356	0.363	0.323	0.314
Technical specification limit	10.0	10.0	10.0	10.0	10.0	10.0	10.0	10.0	10.0	10.0	10.0	10.0
Indicator value	3.3	3.6	2.9	3.9	1.6	3.4	4.7	3.9	3.6	3.6	3.2	3.1

Licensee Comments:

9/01: Each RCS leakage flow rate value has been increased by 0.035 gpm to account for zinc acetate flow that is periodically injected into the RCS for corrosion control purposes. This flow rate was inadvertently excluded from the PI calculation methodology. This change affects all data submittals for this PI and is therefore being incorporated into each PI data submittal since the start of the ROP in April 2000. The change did not result in a color change for this PI for any quarter.

6/01: Each RCS leakage flow rate value has been increased by 0.035 gpm to account for zinc acetate flow that is periodically injected into the RCS for corrosion control purposes. This flow rate was inadvertently excluded from the PI calculation methodology. This change affects all data submittals for this PI and is therefore being incorporated into each PI data submittal since the start of the ROP in April 2000. The change did not result in a color change for this PI for any quarter.

3/01: Each RCS leakage flow rate value has been increased by 0.035 gpm to account for zinc acetate flow that is periodically injected into the RCS for corrosion control purposes. This flow rate was inadvertently excluded from the PI calculation methodology. This change affects all data submittals for this PI and is therefore being incorporated into each PI data submittal since the start of the ROP in April 2000. The change did not result in a color change for this PI for any quarter.

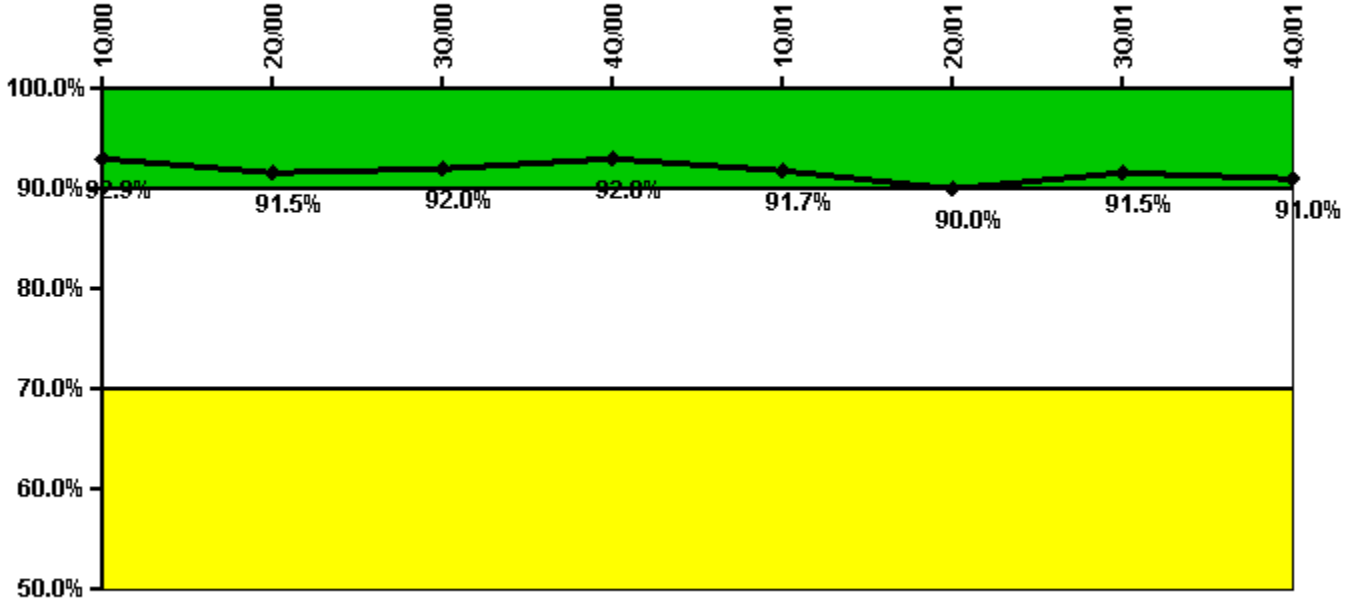
12/00: Each RCS leakage flow rate value has been increased by 0.035 gpm to account for zinc acetate flow that is periodically injected into the RCS for corrosion control purposes. This flow rate was inadvertently excluded from the PI calculation methodology. This change affects all data submittals for this PI and is therefore being incorporated into each PI data submittal since the start of the ROP in April 2000. The change did not result in a color change for this PI for any quarter.

9/00: Each RCS leakage flow rate value has been increased by 0.035 gpm to account for zinc acetate flow that is periodically injected into the RCS for corrosion control purposes. This flow rate was inadvertently excluded from the PI calculation methodology. This change affects all data submittals for this PI and is therefore being incorporated into each PI data submittal since the start of the ROP in April 2000. The change did not result in a color change for this PI for any quarter.

6/00: Each RCS leakage flow rate value has been increased by 0.035 gpm to account for zinc acetate flow that is periodically injected into the RCS for corrosion control purposes. This flow rate was inadvertently excluded from the PI calculation methodology. This change affects all data

submittals for this PI and is therefore being incorporated into each PI data submittal since the start of the ROP in April 2000. The change did not result in a color change for this PI for any quarter.

Drill/Exercise Performance



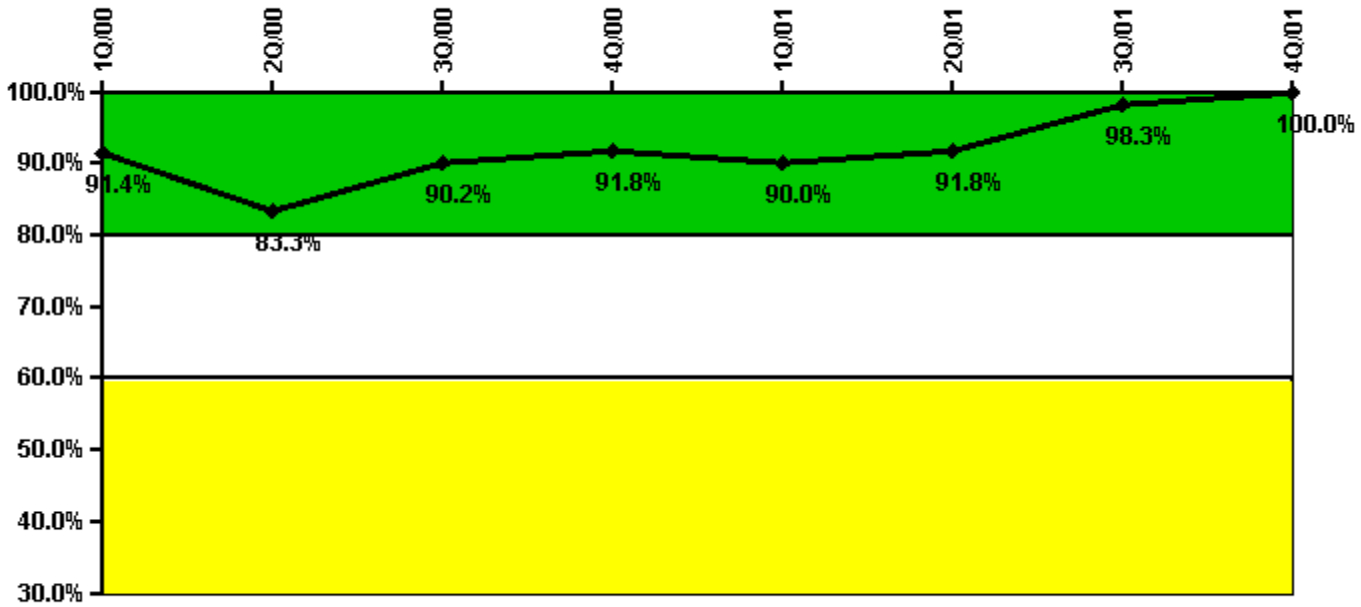
Thresholds: White < 90.0% Yellow < 70.0%

Notes

Drill/Exercise Performance	1Q/00	2Q/00	3Q/00	4Q/00	1Q/01	2Q/01	3Q/01	4Q/01
Successful opportunities	24.0	28.0	21.0	10.0	36.0	21.0	23.0	9.0
Total opportunities	27.0	33.0	23.0	10.0	40.0	23.0	23.0	10.0
Indicator value	92.9%	91.5%	92.0%	92.8%	91.7%	90.0%	91.5%	91.0%

Licensee Comments: none

ERO Drill Participation



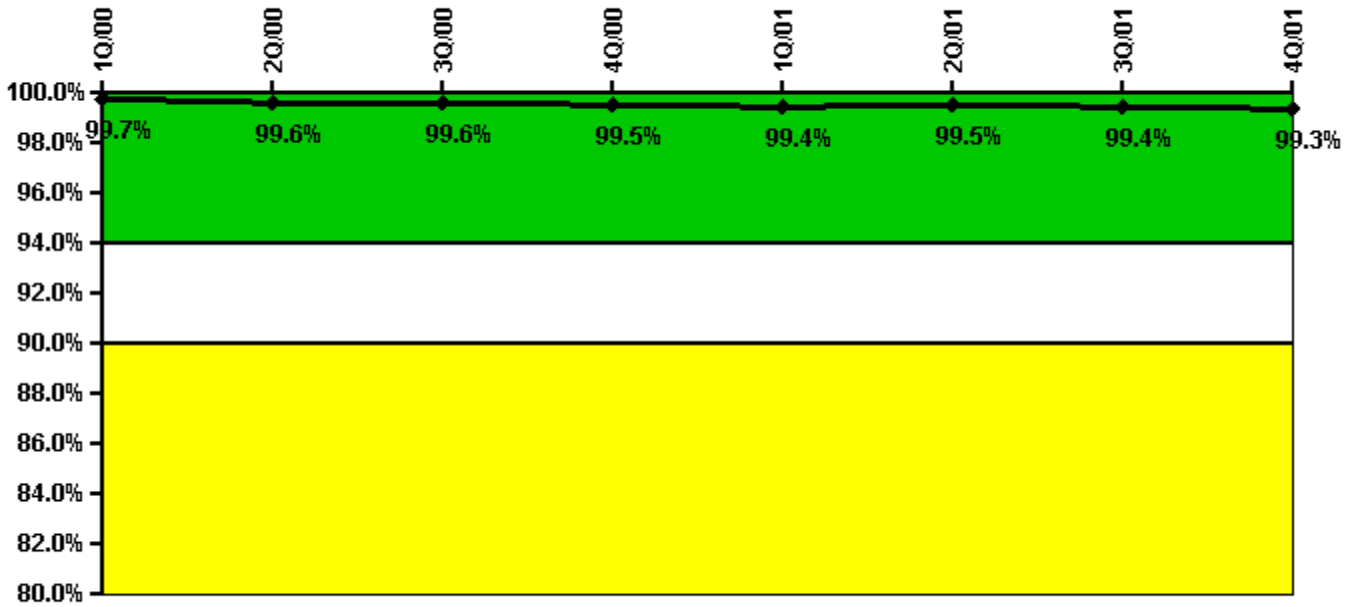
Thresholds: White < 80.0% Yellow < 60.0%

Notes

ERO Drill Participation	1Q/00	2Q/00	3Q/00	4Q/00	1Q/01	2Q/01	3Q/01	4Q/01
Participating Key personnel	53.0	50.0	55.0	56.0	54.0	56.0	59.0	61.0
Total Key personnel	58.0	60.0	61.0	61.0	60.0	61.0	60.0	61.0
Indicator value	91.4%	83.3%	90.2%	91.8%	90.0%	91.8%	98.3%	100.0%

Licensee Comments: none

Alert & Notification System



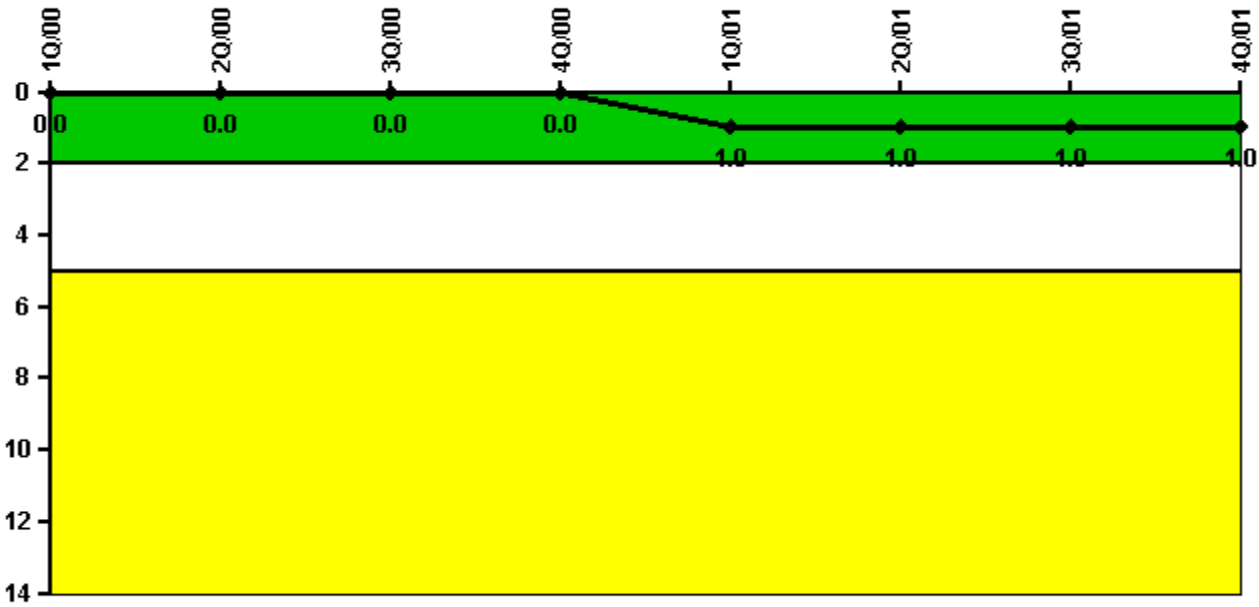
Thresholds: White < 94.0% Yellow < 90.0%

Notes

Alert & Notification System	1Q/00	2Q/00	3Q/00	4Q/00	1Q/01	2Q/01	3Q/01	4Q/01
Successful siren-tests	912	1040	1175	1044	909	1043	1171	1039
Total sirens-tests	917	1048	1179	1048	917	1048	1179	1048
Indicator value	99.7%	99.6%	99.6%	99.5%	99.4%	99.5%	99.4%	99.3%

Licensee Comments: none

Occupational Exposure Control Effectiveness



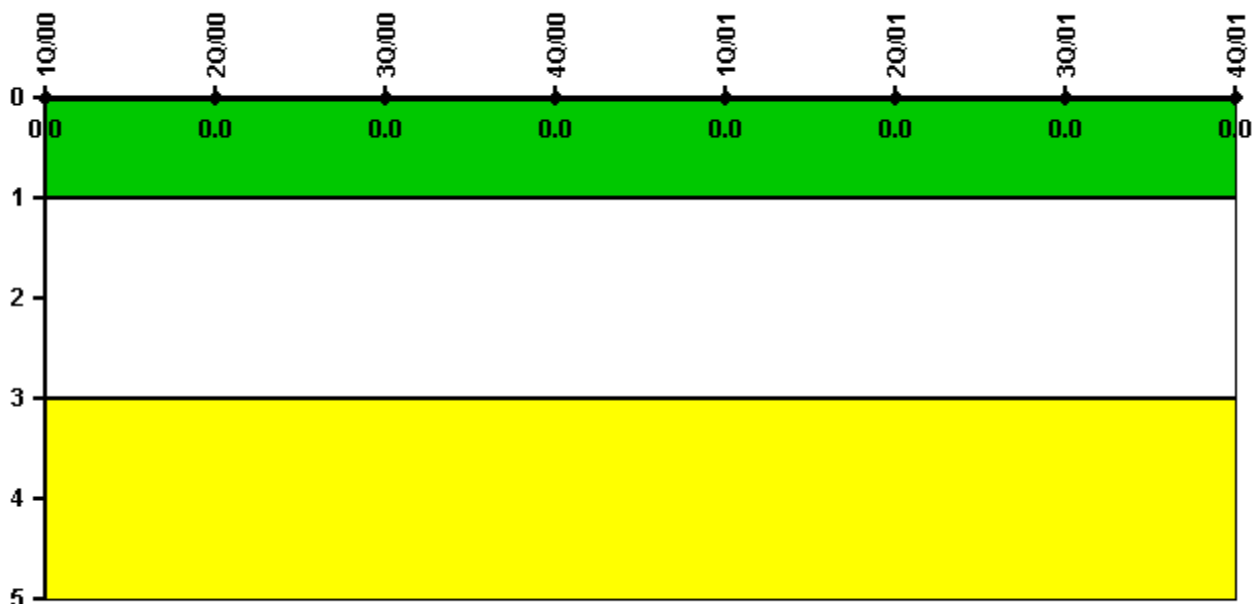
Thresholds: White > 2.0 Yellow > 5.0

Notes

Occupational Exposure Control Effectiveness	1Q/00	2Q/00	3Q/00	4Q/00	1Q/01	2Q/01	3Q/01	4Q/01
High radiation area occurrences	0	0	0	0	1	0	0	0
Very high radiation area occurrences	0	0	0	0	0	0	0	0
Unintended exposure occurrences	0	0	0	0	0	0	0	0
Indicator value	0	0	0	0	1	1	1	1

Licensee Comments: none

RETS/ODCM Radiological Effluent



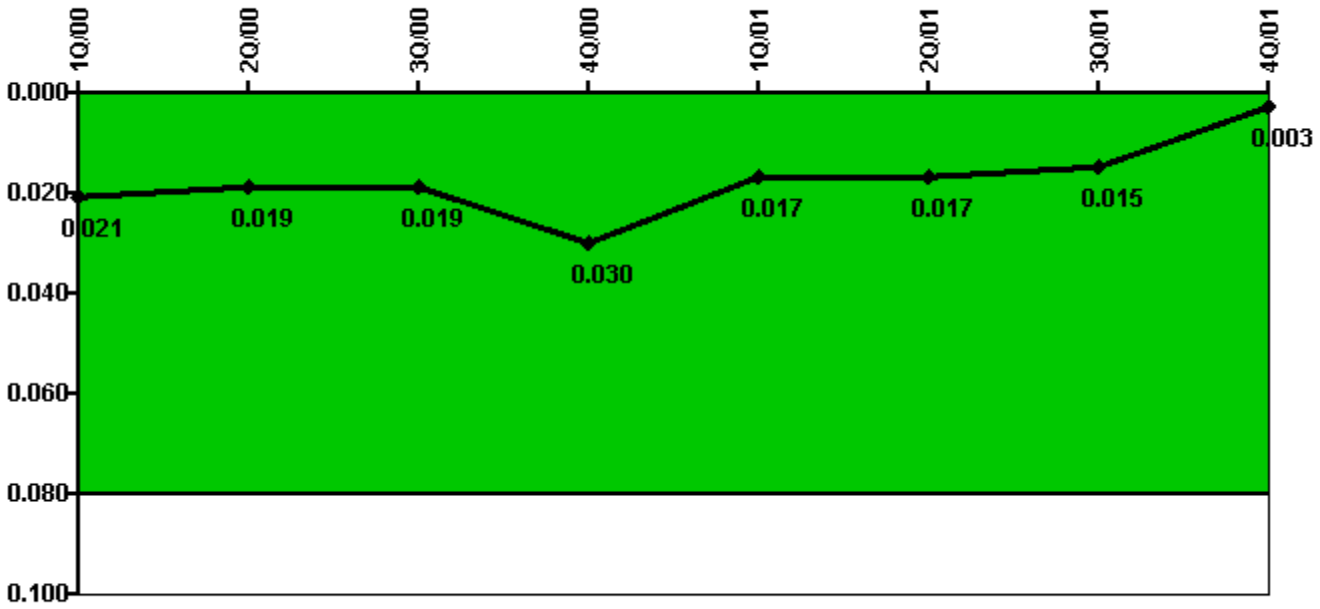
Thresholds: White > 1.0 Yellow > 3.0

Notes

RETS/ODCM Radiological Effluent	1Q/00	2Q/00	3Q/00	4Q/00	1Q/01	2Q/01	3Q/01	4Q/01
RETS/ODCM occurrences	0	0	0	0	0	0	0	0
Indicator value	0	0	0	0	0	0	0	0

Licensee Comments: none

Protected Area Security Performance Index



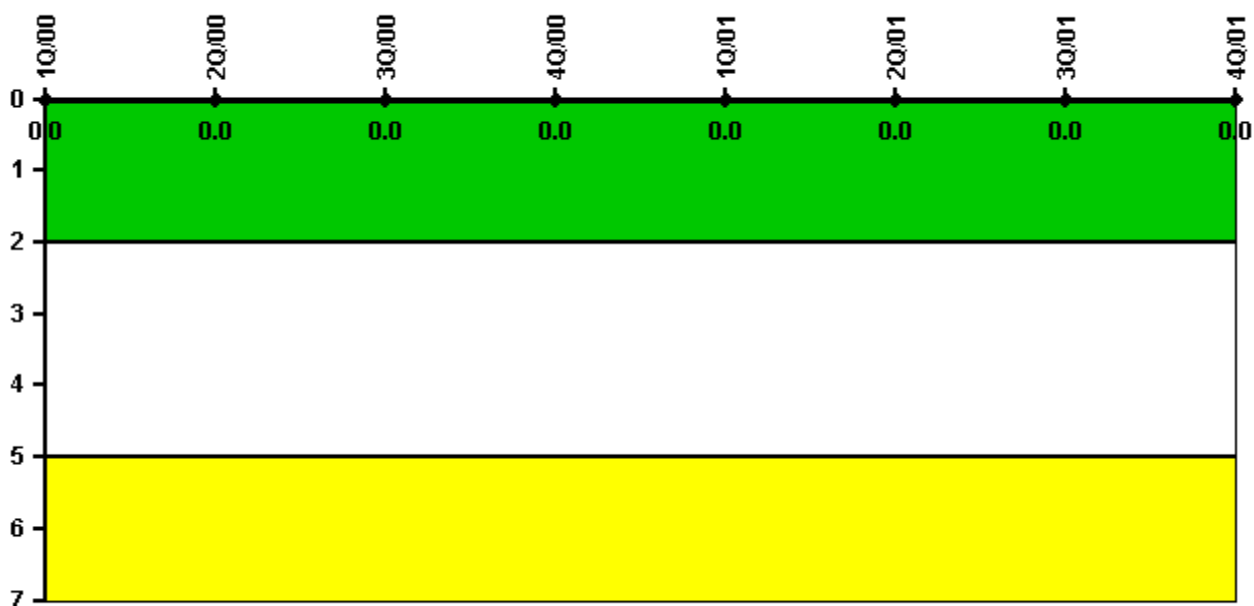
Thresholds: White > 0.080

Notes

Protected Area Security Performance Index	1Q/00	2Q/00	3Q/00	4Q/00	1Q/01	2Q/01	3Q/01	4Q/01
IDS compensatory hours	573.00	35.75	51.87	31.37	3.87	15.33	24.48	5.90
CCTV compensatory hours	0	0	14.9	267.1	22.4	2.6	1.8	0.9
IDS normalization factor	2.30	2.30	2.30	2.30	2.30	2.30	2.30	2.30
CCTV normalization factor	1.2	1.2	1.2	1.2	1.2	1.2	1.2	1.2
Index Value	0.021	0.019	0.019	0.030	0.017	0.017	0.015	0.003

Licensee Comments: none

Personnel Screening Program



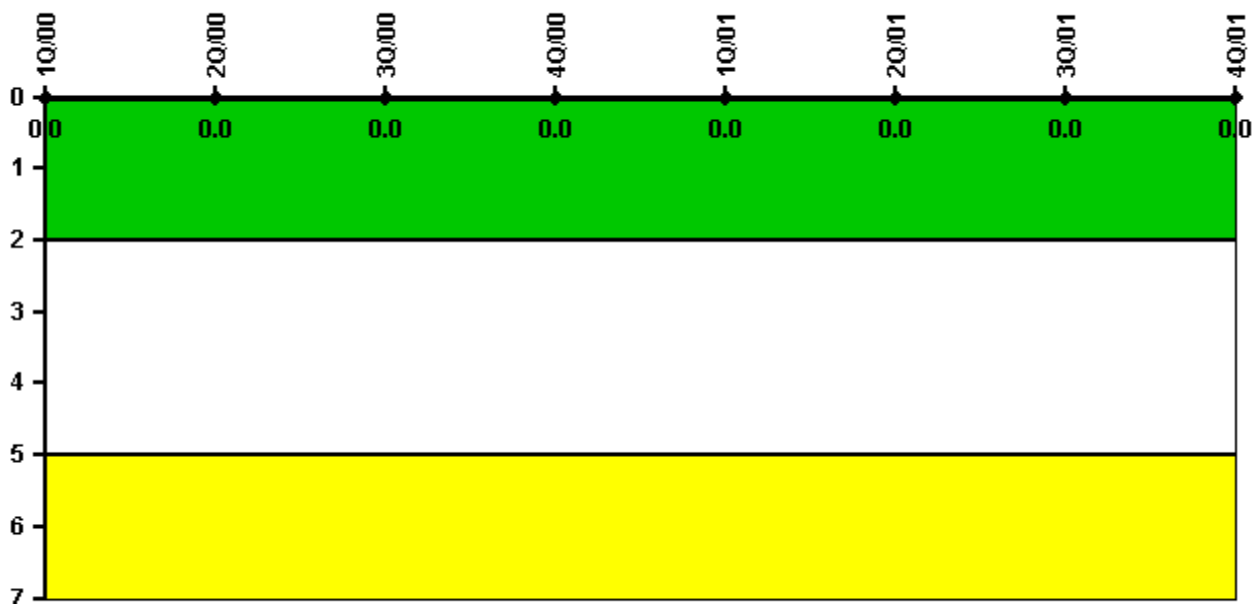
Thresholds: White > 2.0 Yellow > 5.0

Notes

Personnel Screening Program	1Q/00	2Q/00	3Q/00	4Q/00	1Q/01	2Q/01	3Q/01	4Q/01
Program failures	0	0	0	0	0	0	0	0
Indicator value	0	0	0	0	0	0	0	0

Licensee Comments: none

FFD/Personnel Reliability



Thresholds: White > 2.0 Yellow > 5.0

Notes

FFD/Personnel Reliability	1Q/00	2Q/00	3Q/00	4Q/00	1Q/01	2Q/01	3Q/01	4Q/01
Program Failures	0	0	0	0	0	0	0	0
Indicator value	0	0	0	0	0	0	0	0

Licensee Comments: none

[PI Summary](#) | [Inspection Findings Summary](#) | [Action Matrix Summary](#) | [Reactor Oversight Process](#)

Last Modified: March 15, 2002